

GENERAL NOTES

- TYPE 1 ENCLOSURE. FREE STANDING. FLOOR MOUNTED. CODE GAUGE STEEL.
- FRONT DOORS HAVE LOCKABLE HANDLES WITH COMMON KEYING AND CAPTIVE SCREWS AS REQUIRED.
- FINISH: ANSI 61 GRAY POLYESTER SEMI GLOSS ELECTROSTATIC POWDER.
- PADLOCKING PROVISIONS ARE INCLUDED:
ISOLATION CRANK: THE TRANSFER SWITCH ISOLATION CRANK MAY BE PADLOCKED WITH THE TRANSFER SWITCH IN THE FULLY ISOLATED (DISCONNECTED) POSITION.
- RECOMMENDED CLEARANCES:
FRONT: 48 INCHES; REAR: 36 INCHES
- A FULL RATED NEUTRAL CONNECTION FOR EACH SOURCE AND THE LOAD IS OPTIONAL. WHEN PROVIDED IT IS IN ONE OF THE FOLLOWING FORMATS AS SPECIFIED BY THE CATALOG NO. NEUTRAL TYPE;
 - SOLID (COPPER BUS) NEUTRAL
 - SWITCHED NEUTRAL POLE
 - OVERLAPPING NEUTRAL POLE (NOT AVAILABLE ON 7ADTB & 7ACTB UNITS)
- DESIGNED FOR FRONT AND REAR ACCESS.
- AIR VENTS PER MANUFACTURER'S STANDARD.
- FOR SPECIFIED TRANSFER SWITCH, REFER TO OPERATOR'S MANUAL PROVIDED WITH UNIT.
- ⊕ DENOTES SHIPPING SPLIT. UNIT SHIPS IN 2 SECTIONS.
NOTE: SUPPORT LEGS MUST REST ON A SECURE, FLAT SURFACE.

SPECIFICATIONS

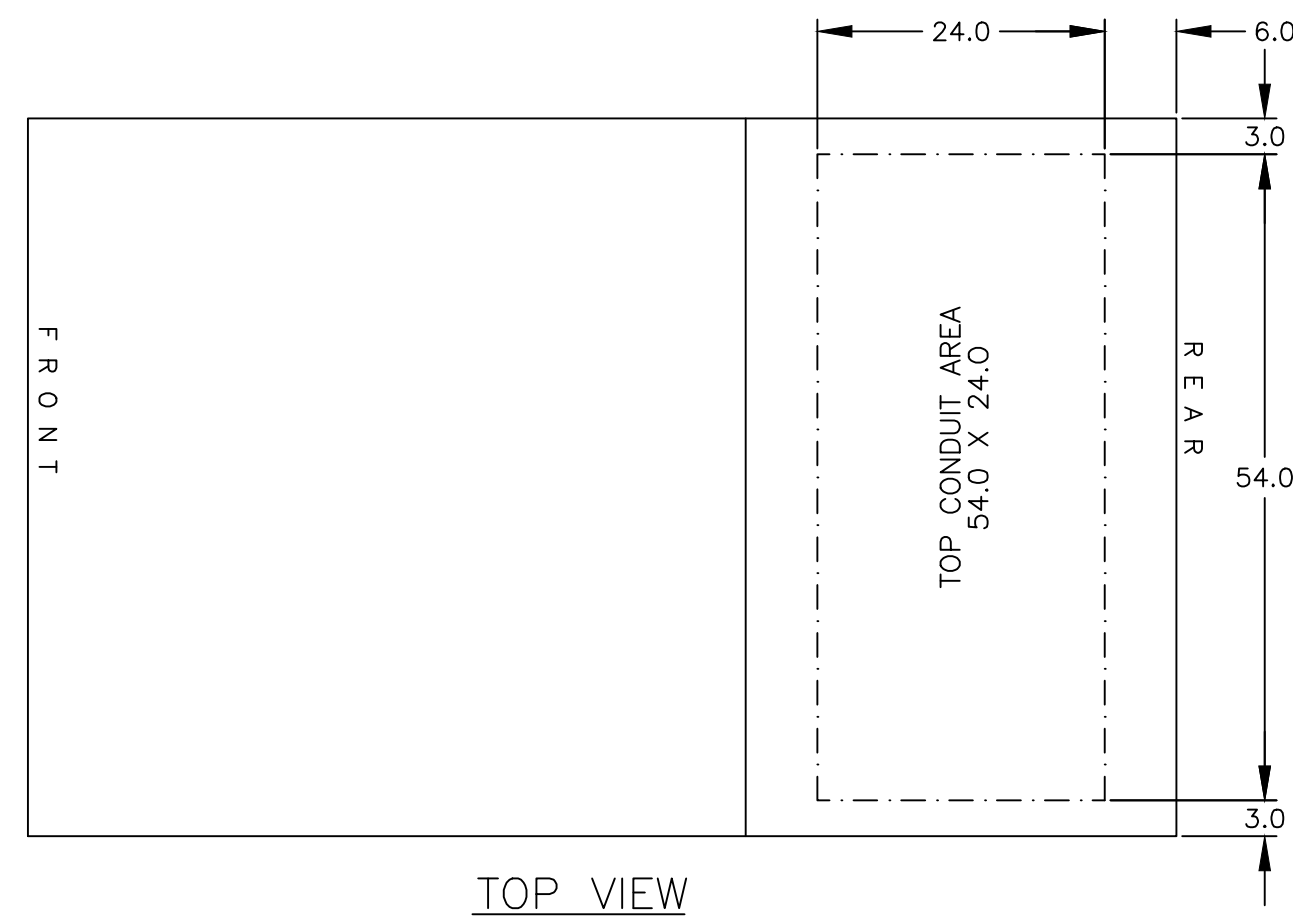
- SERVICE VOLTAGE:
SYSTEM RATING: 4000 AMPS 1 ϕ , 3W, 3 ϕ , 4W.
GROUND BUS- 800 AMPS
UL SHORT CIRCUIT RATING- 100,000 AIC RMS SYM @ 480V
THE SOURCE INPUTS MUST BE PROTECTED BY A REMOTE OVERCURRENT PROTECTION DEVICE AS LISTED ON THE MARKINGS ON THE TRANSFER SWITCH.
- NEUTRAL WHEN SUPPLIED: 4000 AMPS
- APPLICABLE LABELS: U.L. 1008

CABLING NOTES

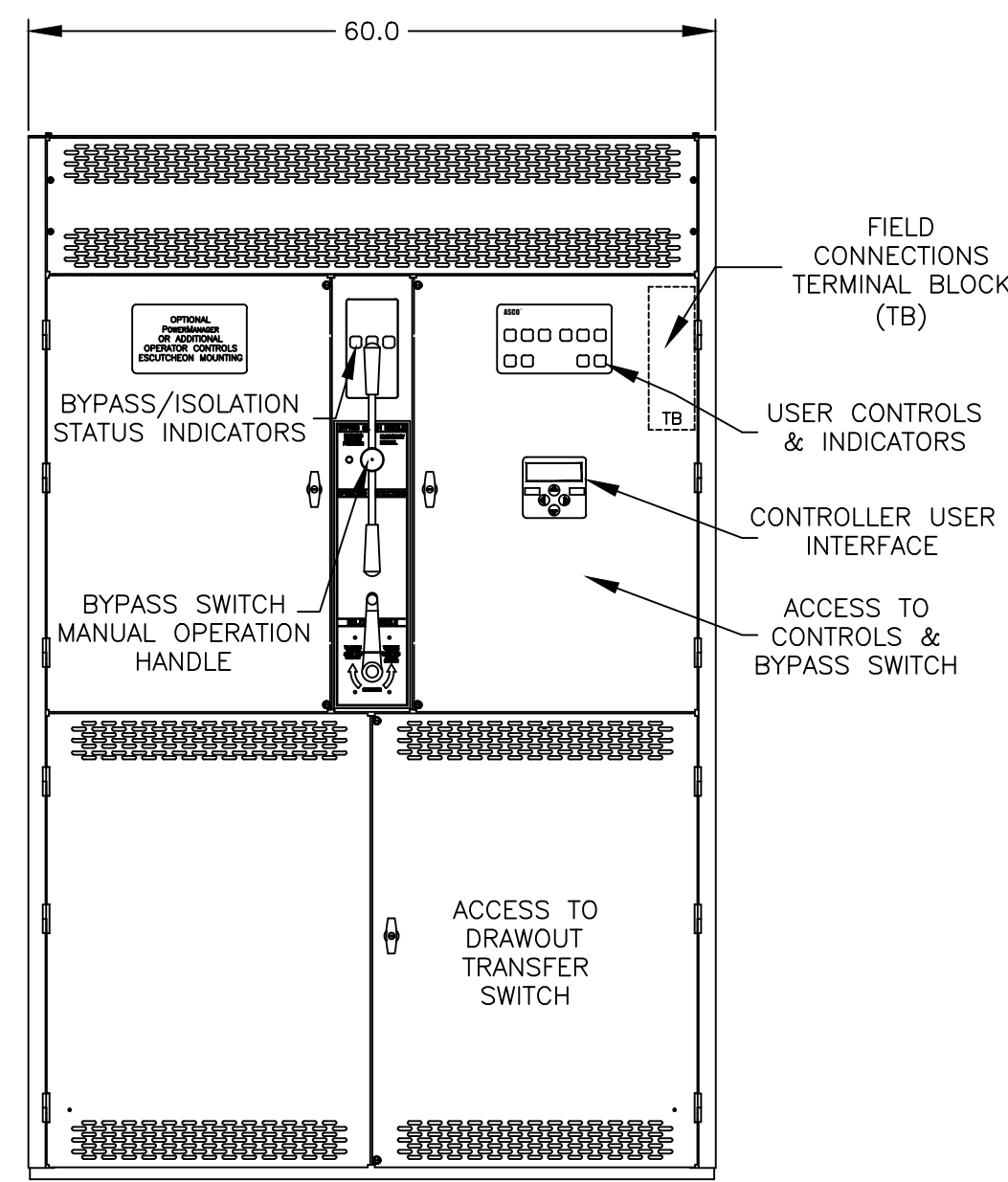
- ALL SIZES SUPPLIED STANDARD WITH MECHANICAL (SCREW TYPE) LUGS.
 - LUG MATERIAL: ALUMINUM ALLOY 6061-T6 WITH ELECTRO TIN PLATED FINISH.
 - SCREW MATERIAL: ALUMINUM ALLOY 6262-T9 WITH ELECTRO TIN PLATED FINISH.
 - UL LISTED, CSA CERTIFIED.
 - LUG SCREW TIGHTENING TORQUE PER UL 486B: 19 FT-LBS.
 - SUITABLE WIRE BENDING SPACE IS PROVIDED.
- OPTIONAL LUGS MAY BE SUPPLIED.
 - UL LISTED, CSA CERTIFIED.
 - LUG MOUNTING HARDWARE TIGHTENING TORQUE: (REFER TO WITHSTAND CURRENT RATING LABEL PROVIDED ON EACH TRANSFER SWITCH).
 - SUITABLE WIRE BENDING SPACE IS PROVIDED AS PER THE NEC.
- CONSULT FACTORY FOR OTHER TERMINATION REQUIREMENTS.

NOTES 4000 AMPS

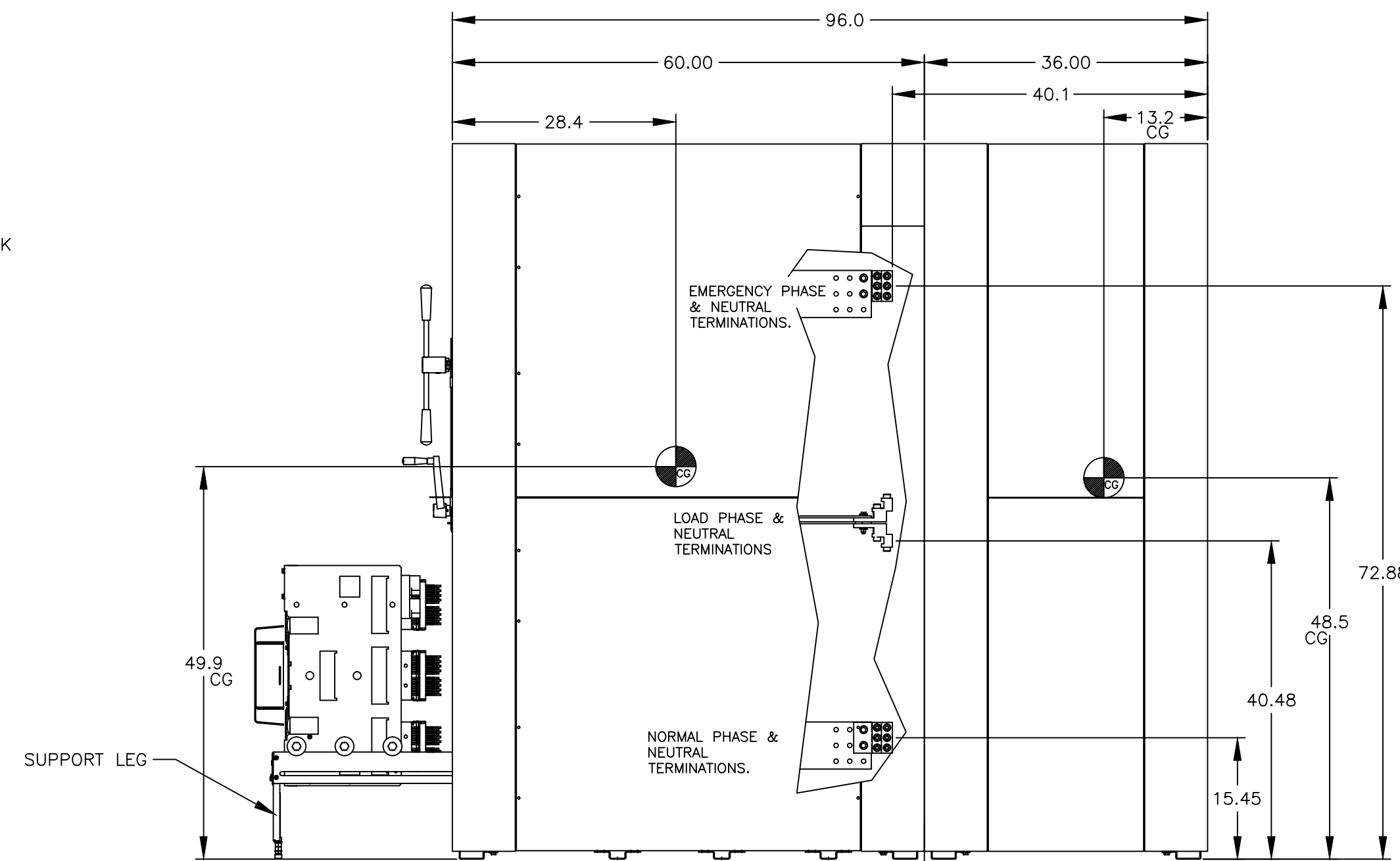
- SUPPLIED WITH STANDARD MECHANICAL (SCREW TYPE) LUGS ON THE NORMAL, EMERGENCY AND LOAD BUS STABS.
TWO (2) LUGS PER PHASE AND NEUTRAL, SUITABLE FOR CONNECTION OF TWELVE (12) 1/0 AWG - 750MCM CU/AL CABLE (SEE NOTE "A" BELOW).
 - SUITABLE WIRE BENDING SPACE IS PROVIDED FOR UP TO TWELVE (12) 750MCM CABLES PER TERMINAL PER NEC.
- GROUND LUGS ARE PROVIDED STANDARD AS FOLLOWS;
(36) 1/0 - 750MCM CU/AL CABLE



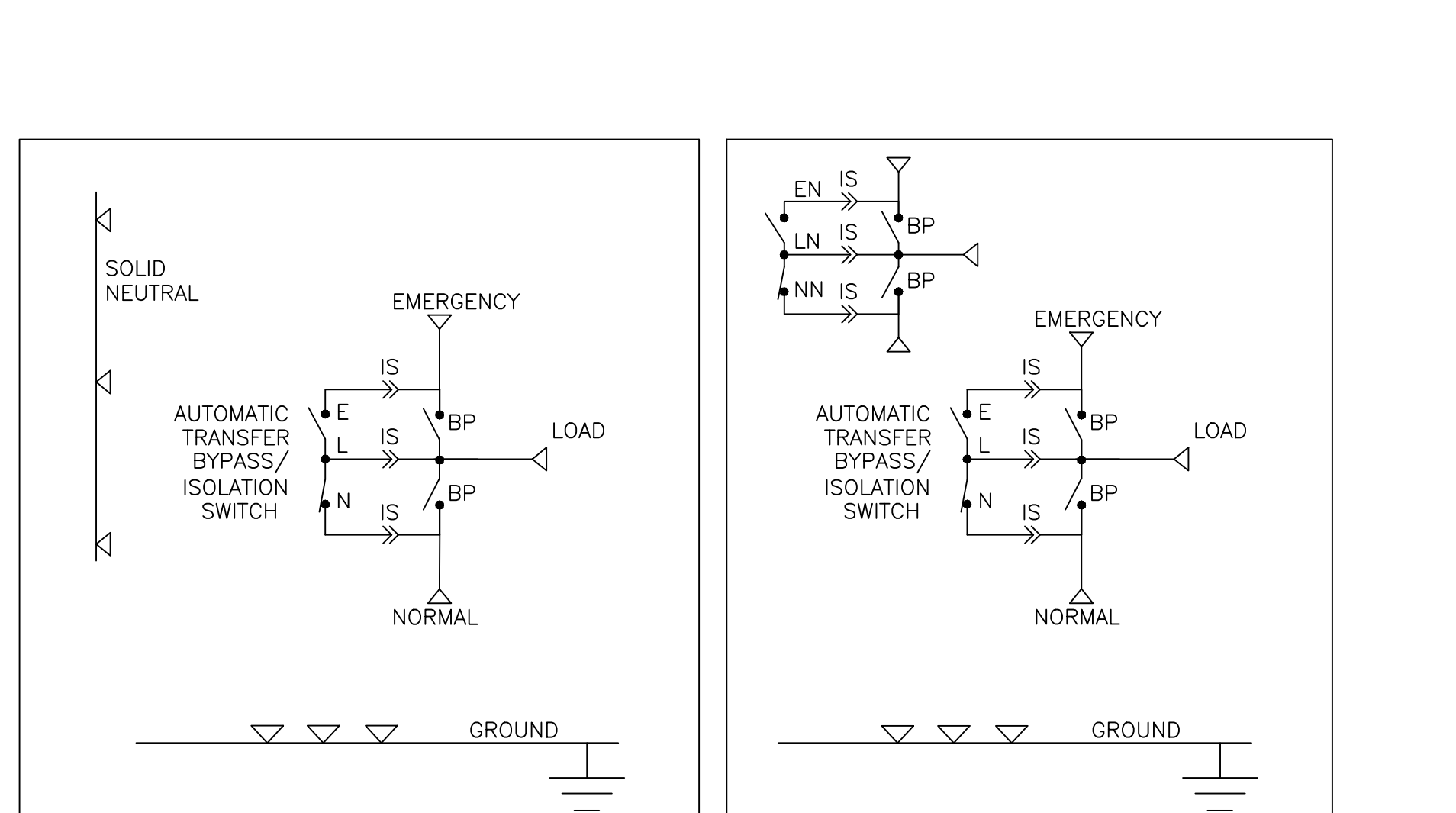
TOP VIEW



FRONT VIEW

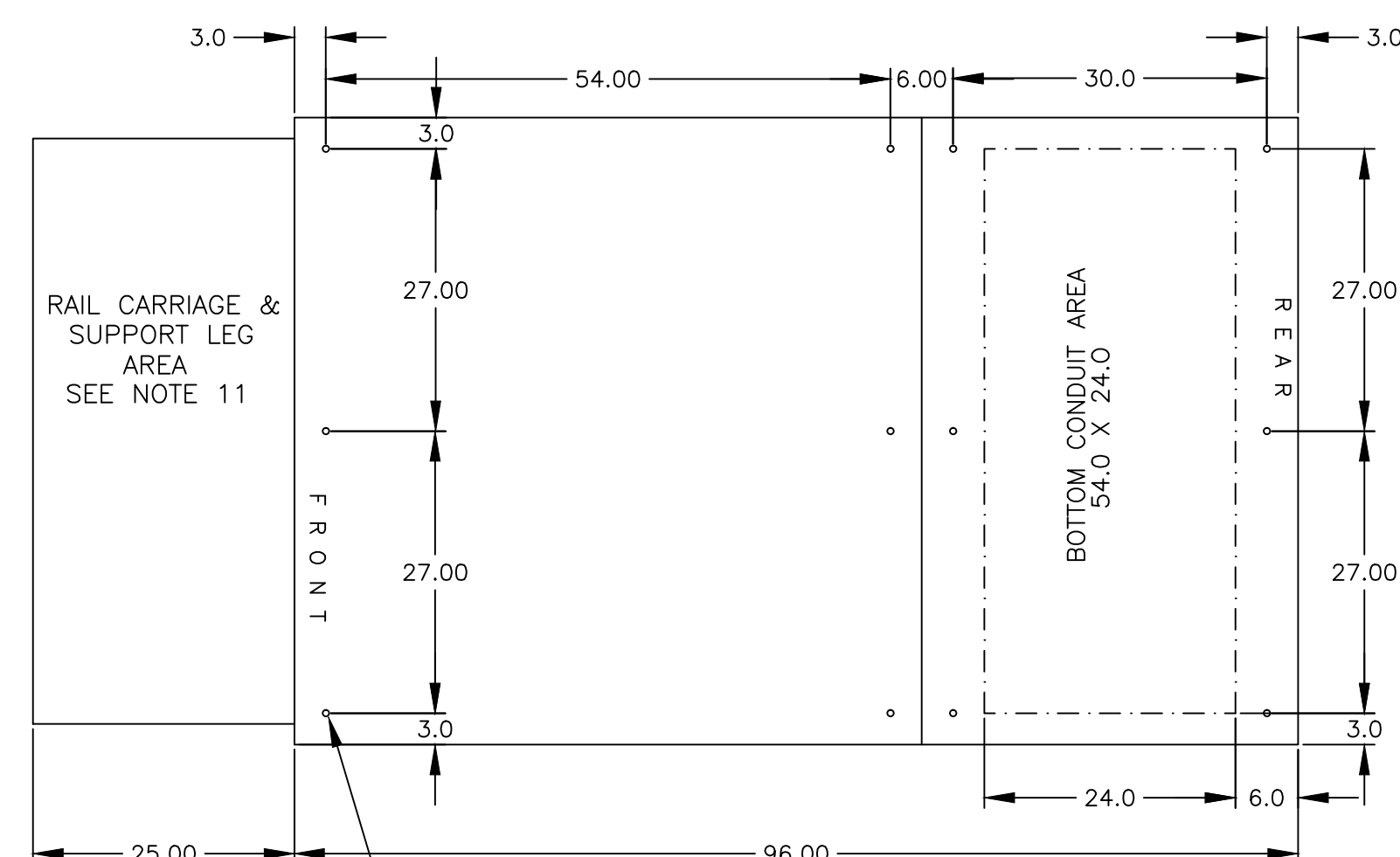


RIGHT SIDE VIEW



ONE LINE DIAGRAMS
(WITH SOLID NEUTRAL)

ONE LINE DIAGRAMS
(WITH SWITCHED/OVERLAPPING NEUTRAL)



PLAN VIEW

⌀.625 MOUNTING HOLES
(12) PLACES.

J	238871	TR	BK	09/10/12
	SEE ECN			
H	235341	MM	BK	01/13/12
	SEE ECN			
G	229864	WK	BK	12/02/10
	SEE ECN			
F	228548	WK	BK	08/10/10
	SEE ECN			
E	227074	BK	WK	04/19/10
	SEE ECN			
D	224520	BWM BWM		9/25/09
	UPDATE RIGHT SIDE VIEW			
C	224333	BWM BWM		9/9/09
	SEE ECN			
M	264790	RN		12-27-16
	SEE ECN			
L	252610	LY		1/15/15
	SEE ECN			
K	242868	AE	BK	06/25/13
	SEE ECN			

PROJECT NAME:		REV. TO SHEET	ECN NO.	BY	APP.	DATE
OUTLINE		MOUNTING				
GATB 4000A WITH 36" REAR PULLBOX						
TYPE 1 91 X 60 X 96						
BY	DATE	MANUFACTURING TOLERANCES TO BE IN ACCORDANCE WITH ASCO PROCEDURE MP-1-003. FOR PLASTIC PARTS SEE MP-1-035		ASSEM. REF. NO.	COMPUTER GENERATED DRAWING	
DRAWN BY	DJJB	08/10/12			SCALE 1/16" = 1" SIZE	DS
CHECKED	BK	08/12/12	PROPERTY OF ASCO POWER TECHNOLOGIES. USE PERMITTED FOR OUR WORK ONLY. ALL RIGHTS OF DESIGN OR INVENTION ARE RESERVED.		DWG. NO.	727401
PROJECT APPROVAL					DRAWING M	ECN NO. 264790
FINAL APPROVAL					SHEET	1 OF 1

ASCO POWER TECHNOLOGIES, L.P.
FLORHAM PARK, NEW JERSEY 07932 U.S.A.