

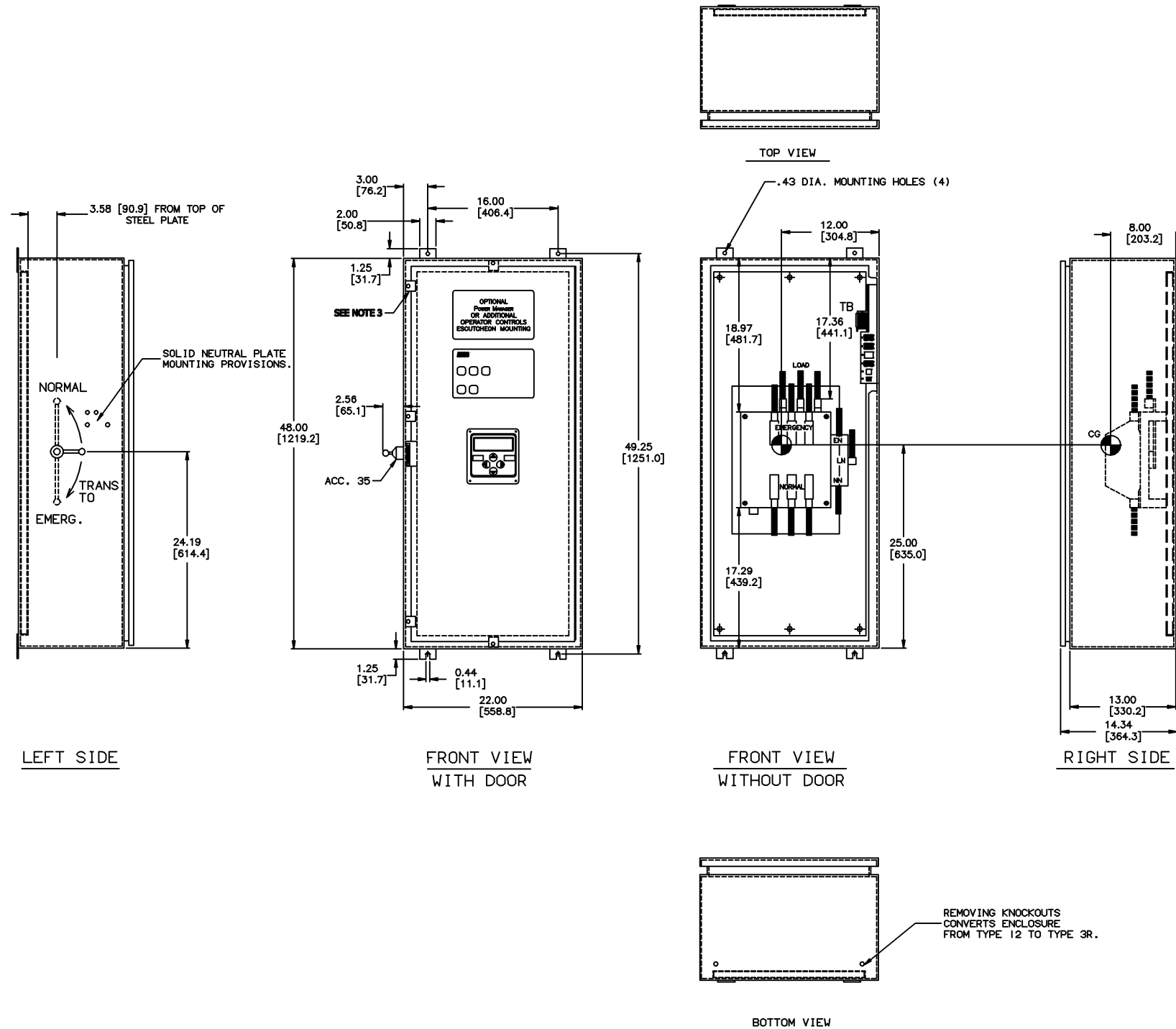
OUTLINE FOR ASCO 7000 SERIES 260-400 AMPERE "E" FRAME TRANSFER SWITCHES TYPE 3R/4/12 ENCLOSURE

GENERAL NOTES

1. TYPE 3R/4/12 WALL MOUNTED ENCLOSURE. CONSTRUCTED IN ACCORDANCE WITH UL STANDARDS 50 & 508.
2. STANDARD FINISH - LIGHT GREY, ANSI 61.
3. DOOR HINGED ON RIGHT SIDE. PADLOCK HASP LEFT SIDE PLATED DOOR CLAMPS (LEFT SIDE FOR TYPES 3R & 12; LEFT, TOP & BOTTOM FOR TYPE 4).
4. FULL WIRING GUTTERS AT TOP & BOTTOM. NO KNOCKOUTS PROVIDED.
5. TERMINALS - SCREW TYPE LUGS FOR EXTERNAL POWER CONNECTIONS.
 RANGE: (2) #1/0 AWG TO 250 MCM
 OR
 (1) #4 AWG TO 600 MCM
6. OVERALL DIMENSIONS ARE OUTSIDE MEASUREMENTS.
7. REFER TO THE OPERATOR'S MANUAL PROVIDED WITH EACH UNIT BEFORE INSTALLING AND OPERATING THE SWITCH.
9. CG CENTER OF GRAVITY
10. NEUTRAL CONFIGURATIONS:
 AN OPTIONAL FULL RATED NEUTRAL CONFIGURATION FOR EACH SOURCE AND THE LOAD MAY BE PROVIDED. WHEN EQUIPPED IT IS IN ONE OF THE FOLLOWING FORMATS AS SPECIFIED BY THE CATALOG NUMBER NO. NEUTRAL TYPE:
 (A) SOLID NEUTRAL
 (B) SWITCHED NEUTRAL POLE(AVAILABLE ON 2 POLE UNITS ONLY)
 (C) OVERLAPPING NEUTRAL POLE

UNIT WEIGHT, LBS (KG)

POLES	WEIGHT
2	158 (72)
B2	166 (75)
C2	166 (75)
3	166 (75)
B3	NOT AVAILABLE
C3	174 (79)



CATALOG NO. _____
CERTIFIED
 To **ASCO** s.o. _____
 DATE _____ BY _____

B	207803	TR	WK	2/14/06
SEE ECH	161239	WK	WK	8/18/02
SEE ECH	154701	RR	RR	5/22/00
ISSUE				

PROJECT NAME:		CHANGE LETTER:	ECH NO.:	BY:	APP.:	DATE:
OUTLINE & MOUNTING		SUBSIDIARY DISTRIBUTION		THIRD ANGLE PROJECTION		
7000 SERIES W/35		AE <input type="checkbox"/> AM <input type="checkbox"/> AL <input type="checkbox"/> AL <input type="checkbox"/>		SCALE: ACAD FILE A2		
TYPE 3R/4/12, GROUP 5		CH <input type="checkbox"/> AM <input type="checkbox"/> AS <input type="checkbox"/> AR <input type="checkbox"/>		COMPUTER GENERATED DRAWING		
BY:	DATE:	MANUFACTURING TOLERANCES TO BE IN ACCORDANCE WITH ASCO PROCEDURE MP-1-003. FOR PLASTIC PARTS SEE MP-1-005.		ASSEM. REF. NO.		
DRAWN BY:	DJB 5/22/00	PROPERTY OF ASCO POWER TECHNOLOGIES. USE PERMITTED FOR OUR WORK ONLY. ALL RIGHTS OF DESIGN OR INVENTION ARE RESERVED.		SIZE: DWG. NO. DS623188-002		
CHECKED:	RR 5/22/00	ASC POWER TECHNOLOGIES, L.P.		CHANGE LETTER: ECH NO. 207603 SHEET 1 OF 1		
FINAL APPROVAL:		FLORHAM PARK, NEW JERSEY 07932 U.S.A.				