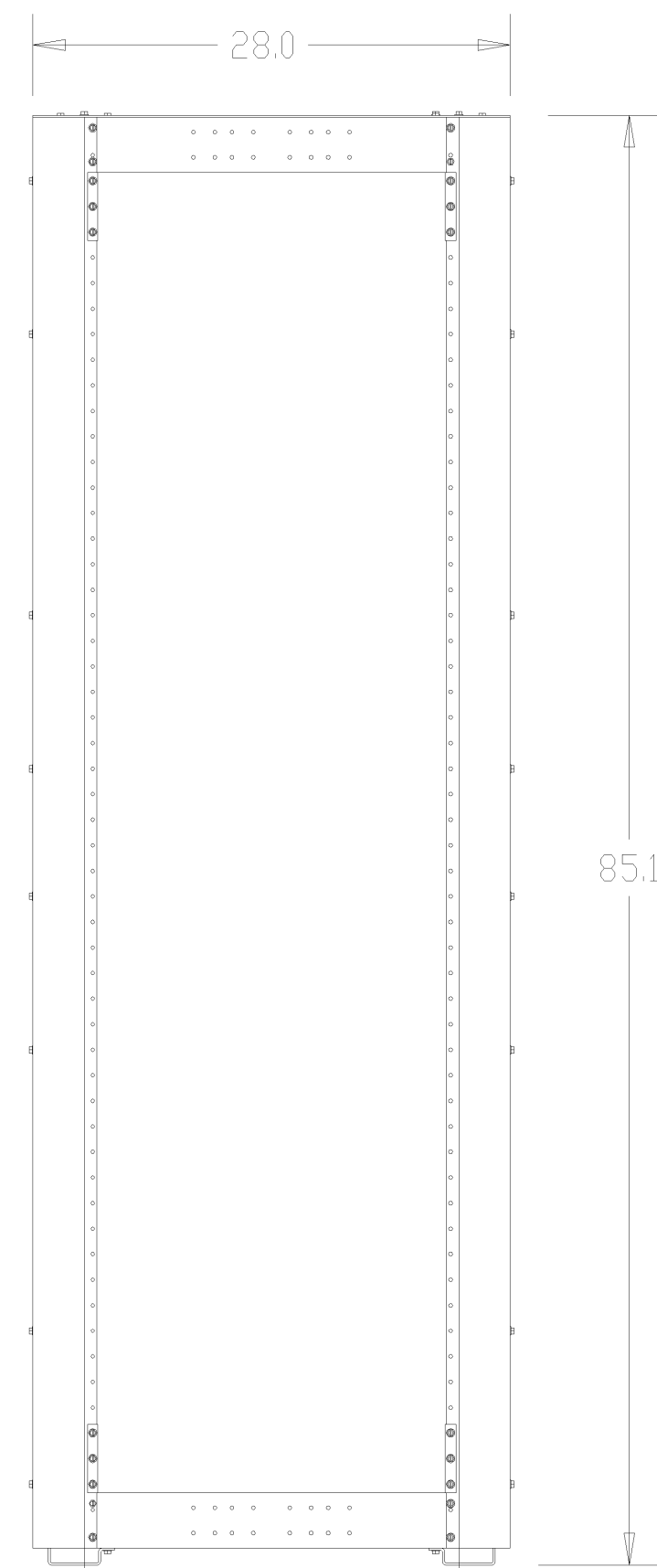
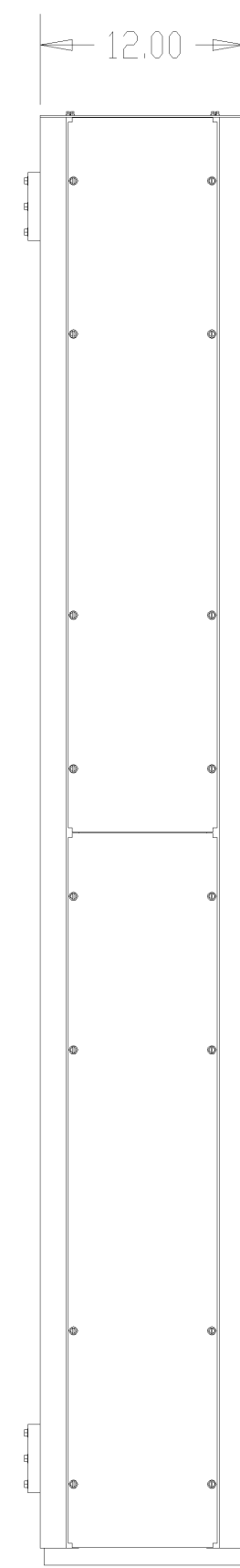


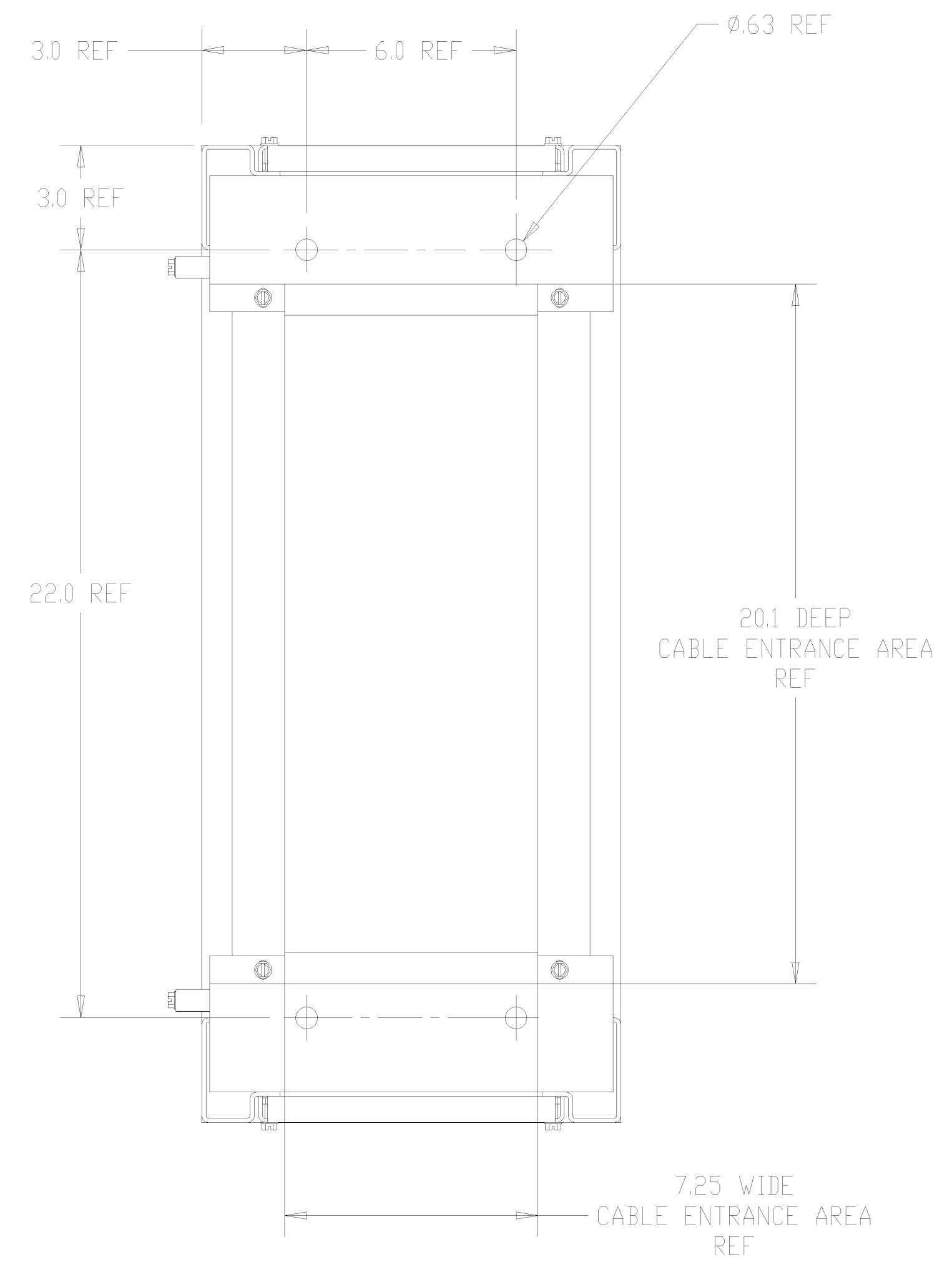
FRONT VIEW



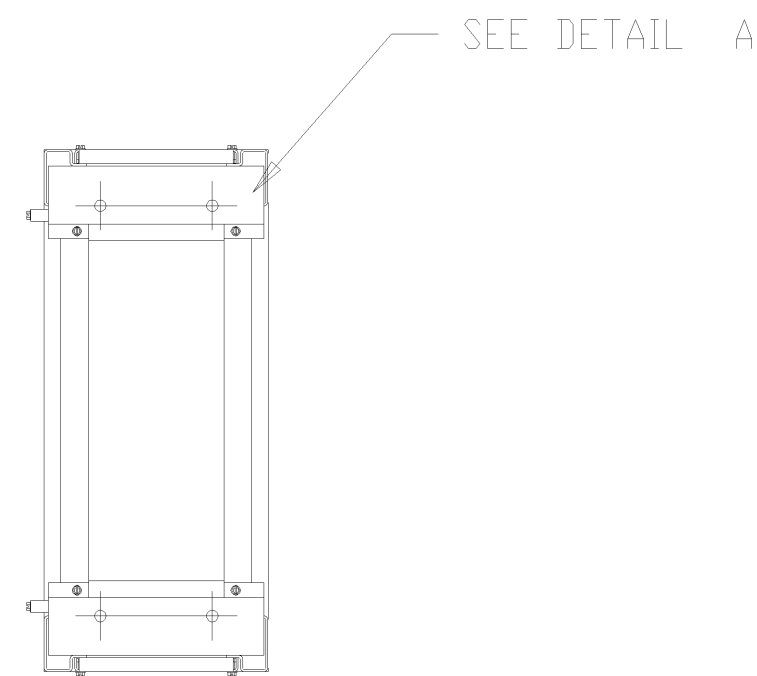
SIDE VIEW W/O SKINS



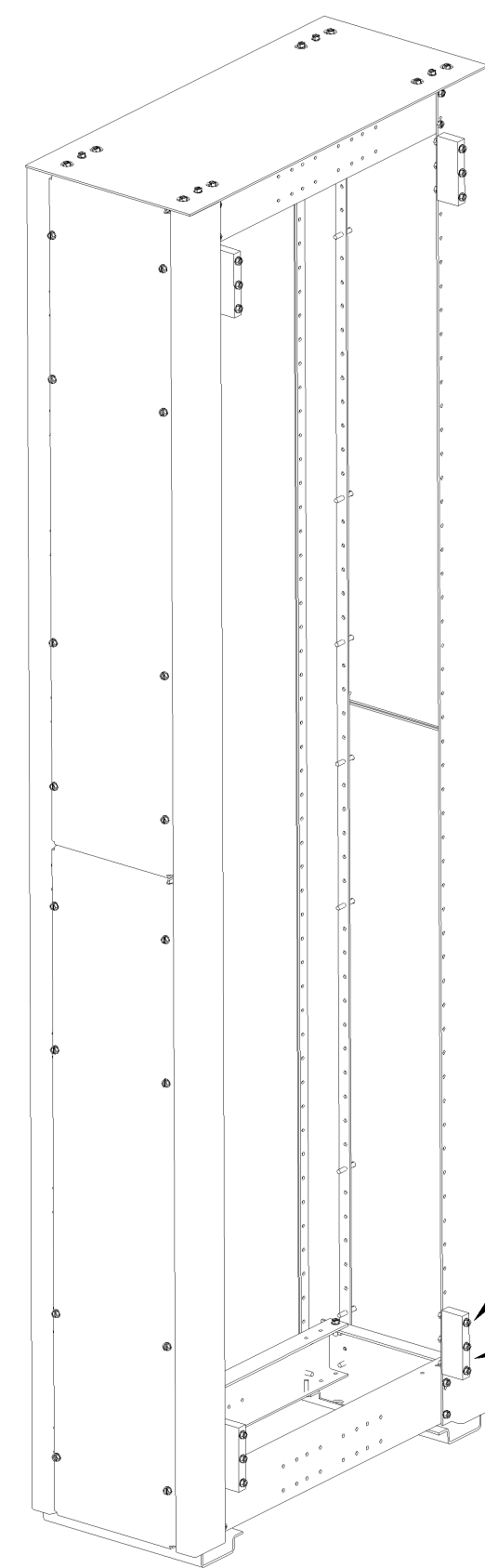
REAR VIEW



DETAIL A



SEE DETAIL A



INSERT AND LIGHTLY TIGHTEN (6) 1/4-20 X .75 LG. SCREWS IN THE EXPOSED CENTER TAPPED HOLES OF THE PULL BOX MOUNTING BLOCK SO THAT THEY MAY BE REMOVED AND UTILIZED TO MOUNT THE PULL BOX TO THE RIGHT SIDE OF THE SWITCH ENCLOSURE.

TO ATTACH THE PULL BOX TO THE RIGHT SIDE OF THE SWITCH ENCLOSURE REMOVE THE RIGHT HAND SIDE SKINS FROM THE SWITCH ENCLOSURE. REMOVE THE SIX PROVIDED SCREWS (REFERENCED IN THE NOTE ABOVE) AND THEN USE THEM FROM INSIDE OF THE SWITCH ENCLOSURE TO FASTEN THE PULL BOX TO THE SWITCH ENCLOSURE BY THE CORNER POSTS IN FOUR (4) PLACES. RE-ATTACH THE SIDE SKINS REMOVED EARLIER FROM THE RIGHT SIDE OF THE SWITCH ENCLOSURE TO THE SIDE OF THE PULL BOX.

PROJECT NAME		214462 JPB JPB 7/26/07	
REV TO SHEET	ECN NO	BY	APP
OUTLINE & MOUNTING		THIRD ANGLE PROJECTION	
PULLBOX TYPE 1, J TS/BYP		85"H x 12"W x 28"D	
BY	DATE	MANUFACTURING TOLERANCES TO BE IN ACCORDANCE WITH ASCO PROCEDURE MP-1-003 FOR PLASTIC PARTS SEE MP-1-055	ASSEM REF NO
JPB	7/26/07	PROPERTY OF ASCO POWER TECHNOLOGIES. USE PERMITTED FOR OUR WORK ONLY. ALL RIGHTS OF DESIGN OR INVENTION ARE RESERVED.	
CHECKED		COMPUTER GENERATED DRAWING	
PROJECT APPROVAL		SCALE	SIZE DS
JPB	7/26/07	824977	
FINAL APPROVAL		ASCO	ASC POWER TECHNOLOGIES, LP FLORHAM PARK, NEW JERSEY 07932 U.S.A.
		DRAWING NO.	ECN NO.
		214462	10F1