

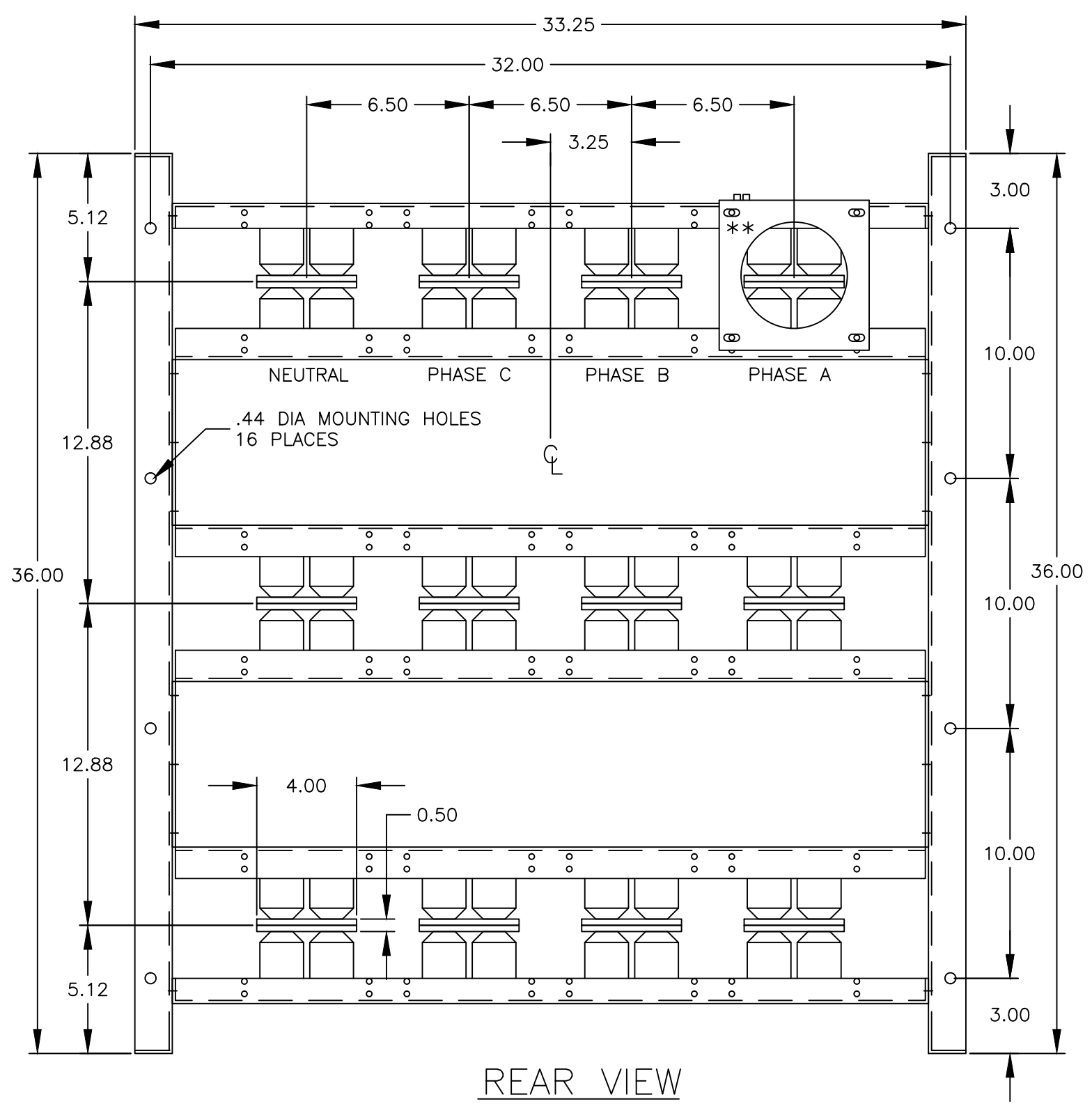
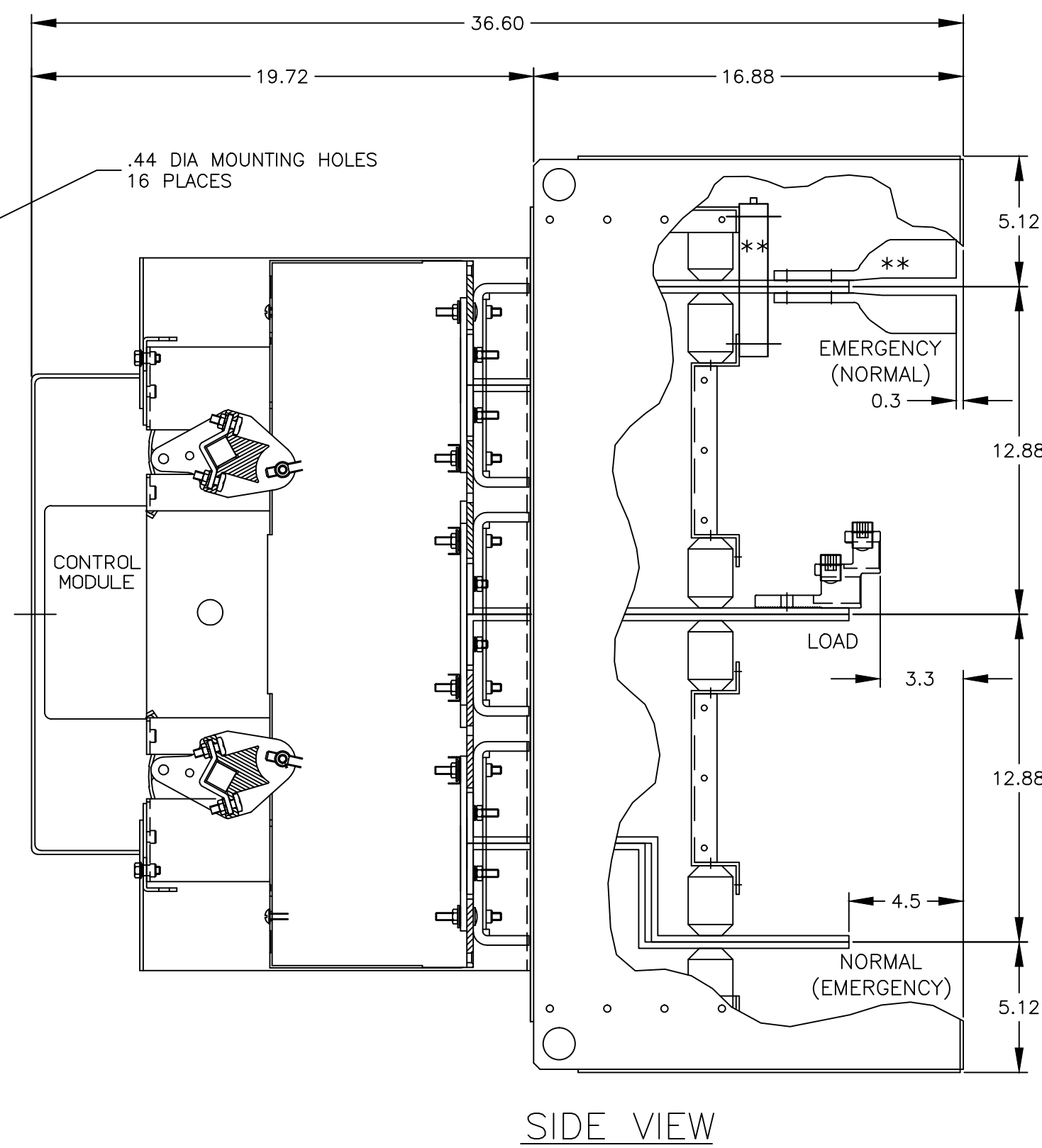
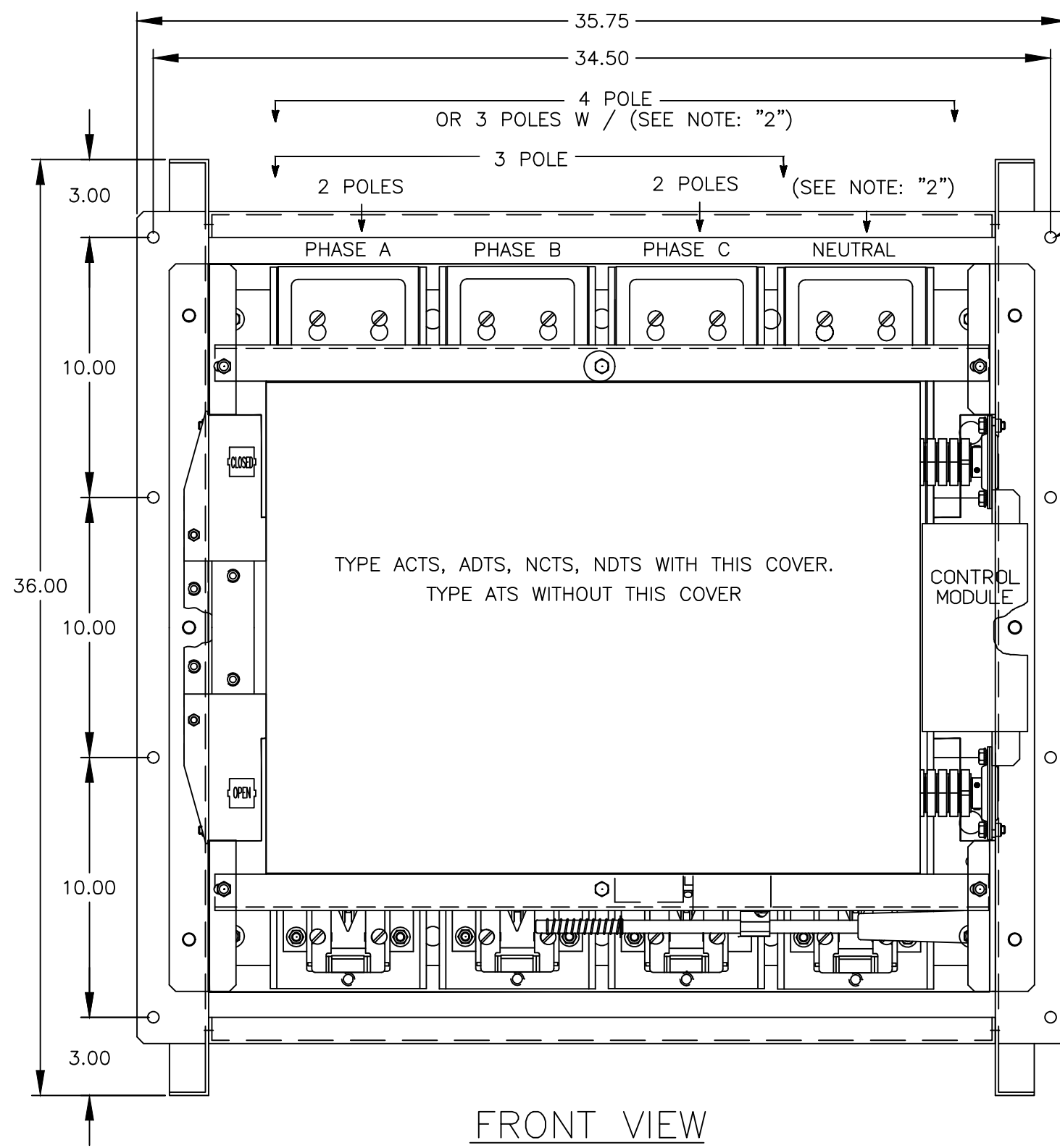
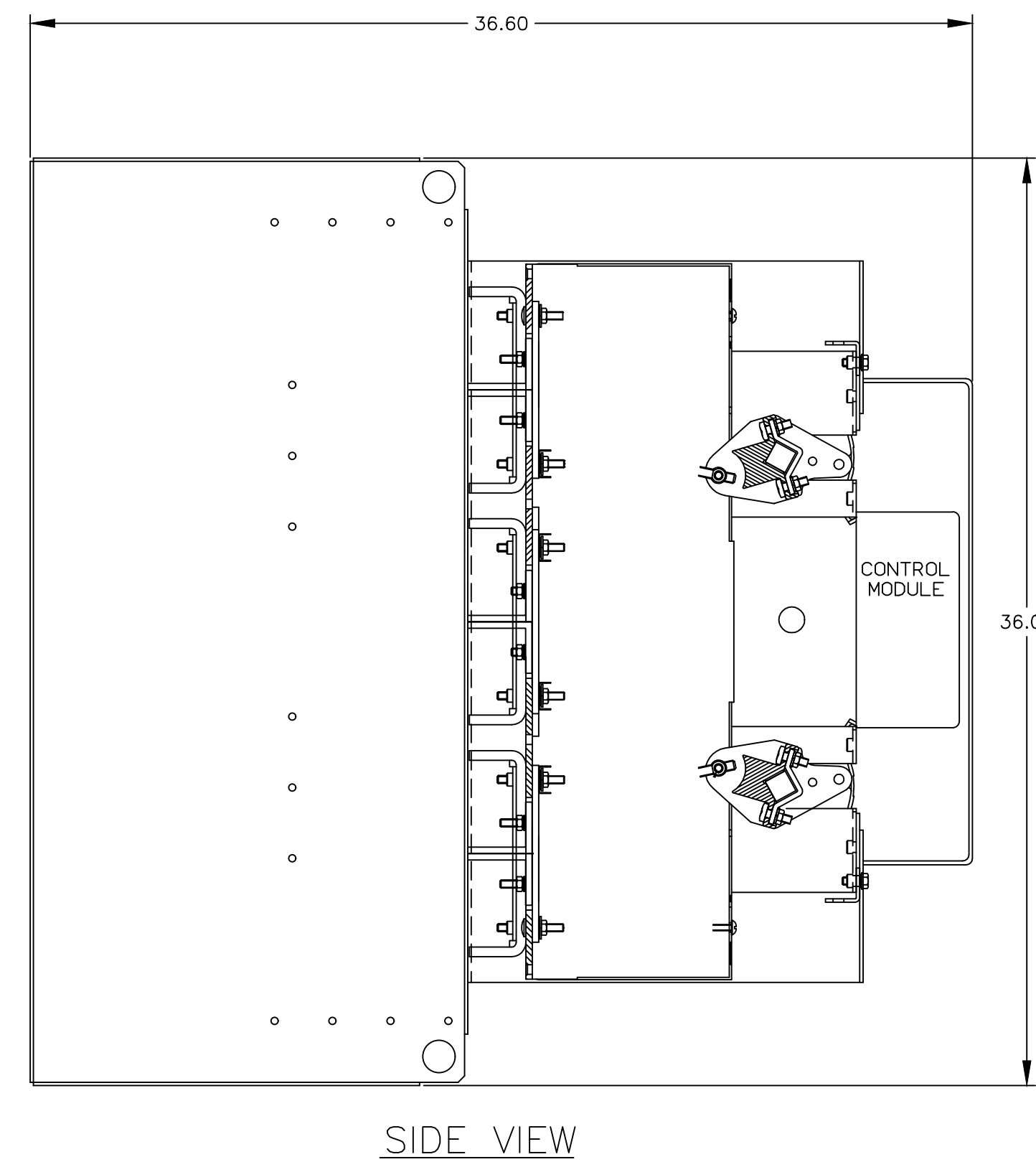
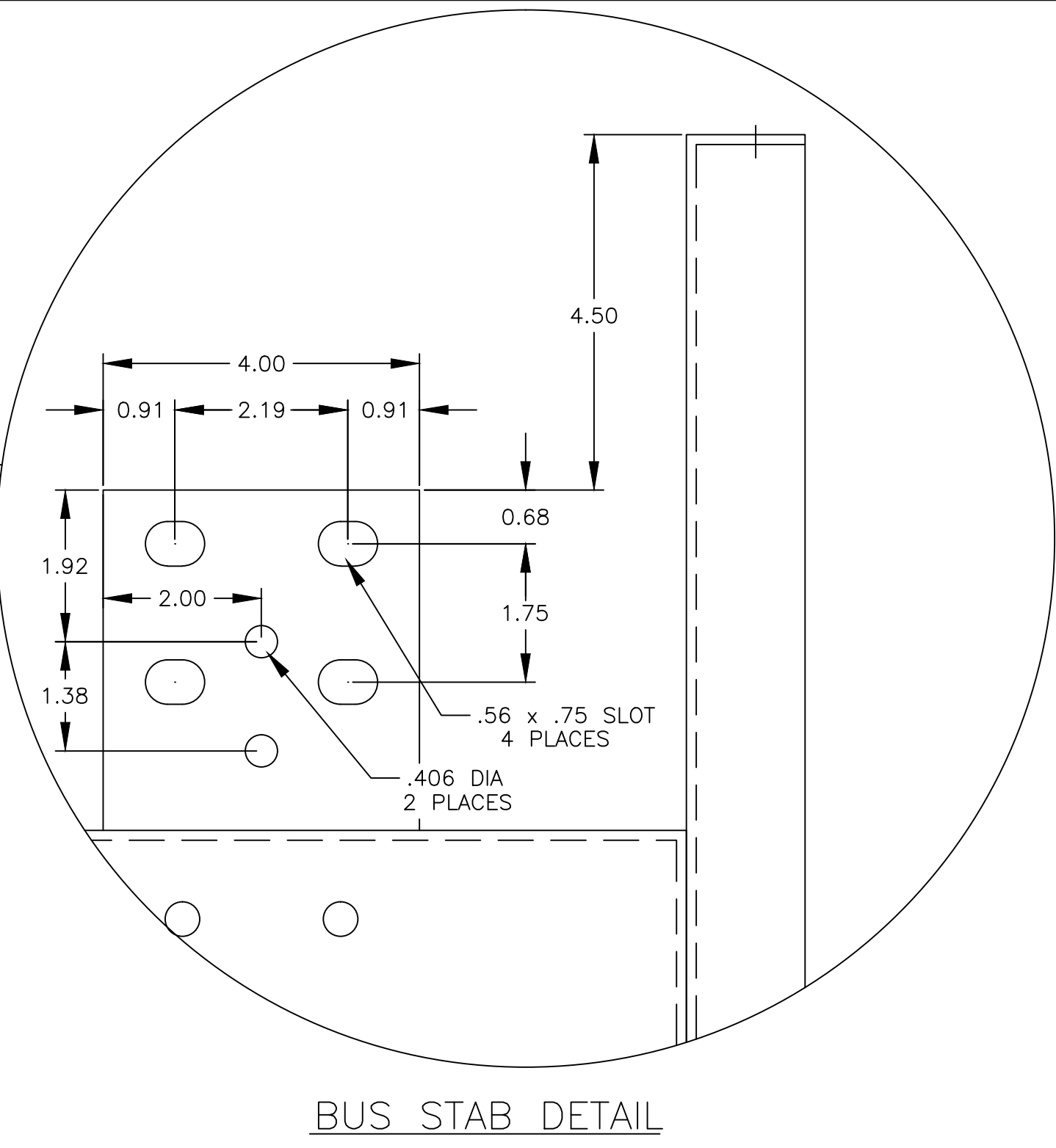
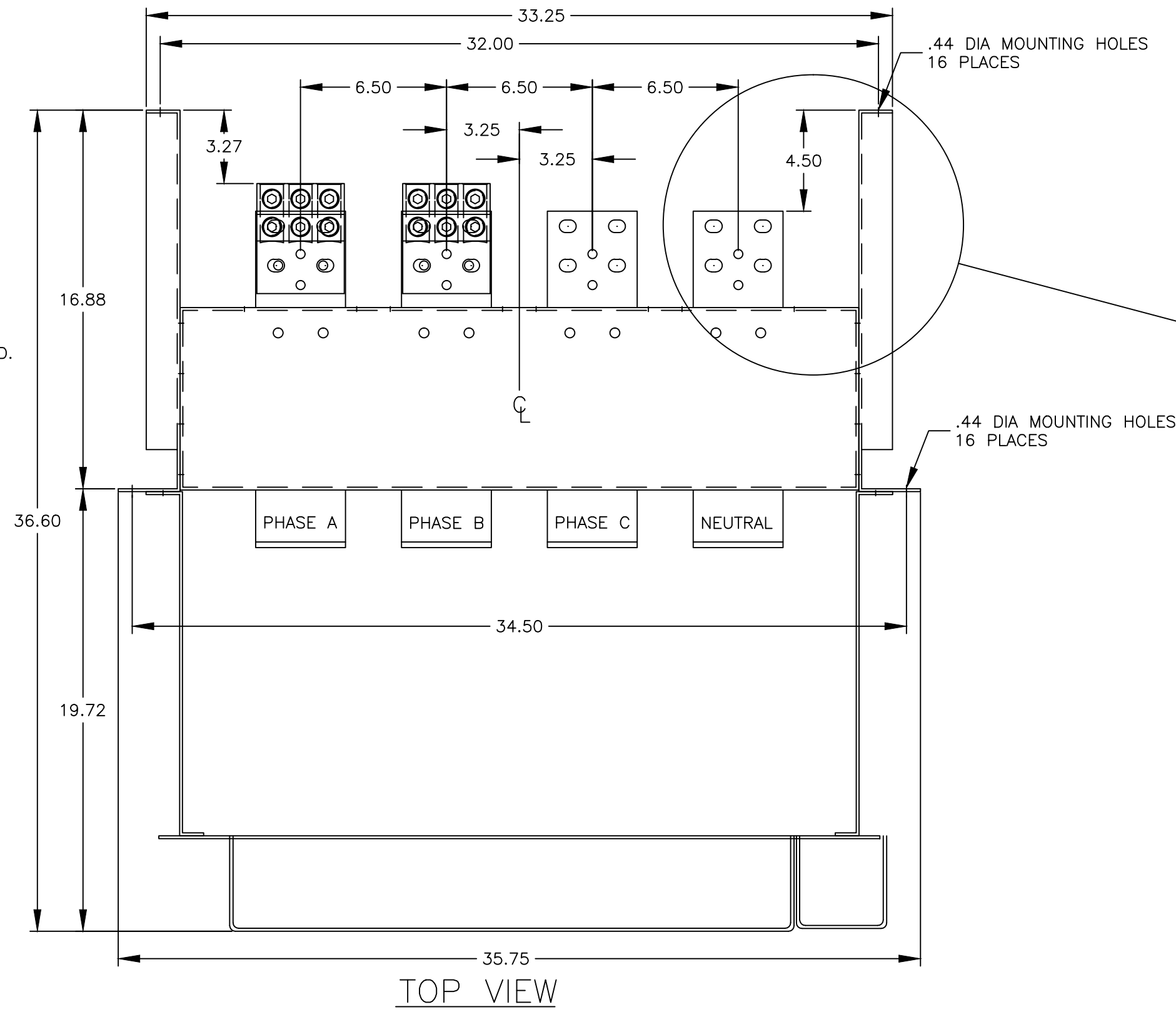
GENERAL NOTES

1. THE STANDARD SWITCH CONFIGURATION IS FOR TOP EMERGENCY, CENTER LOAD AND BOTTOM NORMAL. OPTIONALLY, THE SWITCH MAY BE SUPPLIED WITH REVERSE SOURCES. (REFER TO THE WIRING DIAGRAM FURNISHED WITH EACH TRANSFER SWITCH TO DETERMINE TERMINATION POSITIONS).
2. NEUTRAL CONFIGURATIONS:
AN OPTIONAL FULL RATED NEUTRAL CONFIGURATION FOR EACH SOURCE AND THE LOAD MAY BE PROVIDED. WHEN EQUIPPED IT IS IN ONE OF THE FOLLOWING FORMATS AS SPECIFIED BY THE CATALOG NUMBER NO. NEUTRAL TYPE:
(A) SOLID (COPPER BUS) NEUTRAL
(B) SWITCHED NEUTRAL POLE
3. THE STANDARD MECHANICAL (SCREW TYPE) AL/CU TERMINAL LUGS ARE SHOWN FOR REFERENCE.
4. SWITCH NEUTRAL POLE IS SHOWN FOR REFERENCE.
5. WHEN INSTALLING CONDUCTORS, CONNECT TO SIMILARLY MARKED PHASES OF NORMAL, EMERGENCY & LOAD.
6. ALL INTERNAL CONNECTIONS ARE MADE AT FACTORY.
7. MAINTAIN ELECTRICAL CLEARANCE OF 1 INCH (25.4 mm) BETWEEN LIVE PARTS AND GROUNDED METAL.
8. WHEN MOUNTING THE TRANSFER SWITCH IN THE ENCLOSURE, THE CONTROL PANEL(S) AND OPERATOR CONTROLS SHOULD BE MOUNTED ON THE INSIDE, REAR SURFACE OF THE DOOR. 6 IN. MIN. DEPTH TO TRANSFER SWITCH FOR CONTROLS IS REQUIRED.
9. THE CONTROL PANEL(S) IS CONNECTED TO THE TRANSFER SWITCH BY A HARNESS WITH A QUICK DISCONNECT PLUG(S). THE HARNESS EXITS THE TRANSFER SWITCH ON THE RIGHT SIDE. CONSULT FACTORY FOR EXTENSION HARNESSES.
10. CUSTOMER TERMINAL BLOCKS:
FOR ALL 7000 SERIES UNITS THE TB IS TO BE MOUNTED ON THE UPPER RIGHT SIDE AS INDICATED ON THE NEXT PAGE.

MINIMUM ENCLOSURE REQUIREMENTS INCH (mm)

SWITCH RATING (AMPS)	HEIGHT	WIDTH	DEPTH
800A - 2000A	90 (2286)	38 (965)	60 (1524)

ENCLOSURE VENTILATION REQUIRED
TOTAL VENTILATION = 173 IN² (111613 mm²) MINIMUM.
RECOMMENDED: 33 IN² (21290 mm²) FRONT
140 IN² (90322 mm²) REAR



TERMINATIONS

1. ALL SIZES SUPPLIED STANDARD WITH MECHANICAL (SCREW TYPE) LUGS.
A. LUG MATERIAL: ALUMINUM ALLOY 6061-T6 WITH ELECTRO TIN PLATED FINISH.
B. SCREW MATERIAL: ALUMINUM ALLOY 6262-T9 WITH ELECTRO TIN PLATED FINISH.
C. UL LISTED, CSA CERTIFIED.
D. LUG SCREW TIGHTENING TORQUE PER UL 486B: 19 FT-LBS.

NOTES 800-1200 AMPS

1. SUPPLIED WITH STANDARD MECHANICAL (SCREW TYPE) LUGS ON THE NORMAL, EMERGENCY & LOAD BUS STABS. ONE (1) LUG PER PHASE AND NEUTRAL SUITABLE FOR CONNECTION OF FOUR (4) 1/0 AWG - 750MCM CU/AL CABLE.
2. OPTIONAL COPPER CRIMP LUGS MAY BE SUPPLIED. UP TO FOUR (4) TWO HOLE, LONG BARREL CU CRIMP LUGS RATED FOR UP TO 600MCM. (REFER TO CRIMP LUG INSTALLATION DATA PROVIDED WITH UNIT FOR FULL INSTALLATION DETAILS).

NOTES 1600-2000 AMPS

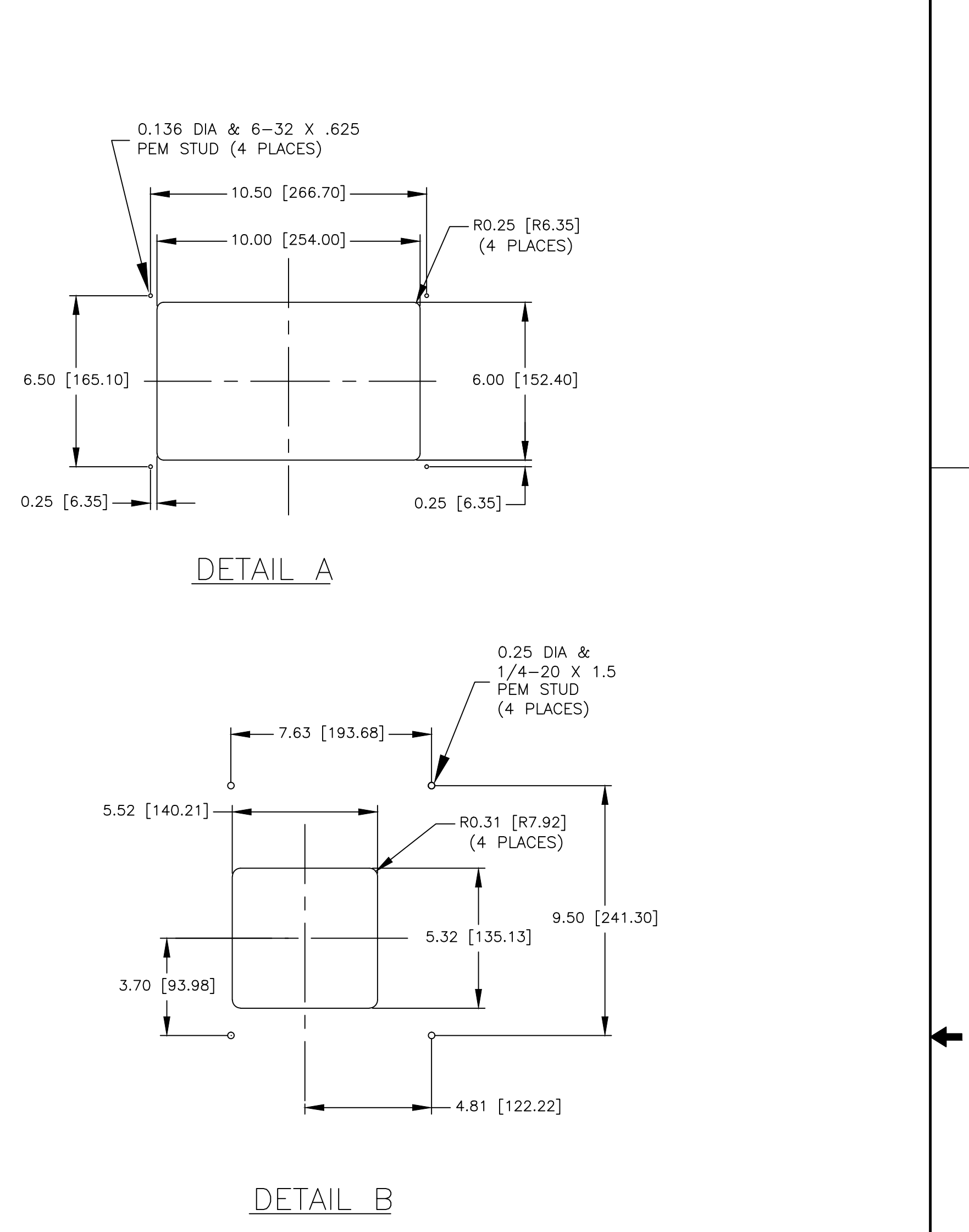
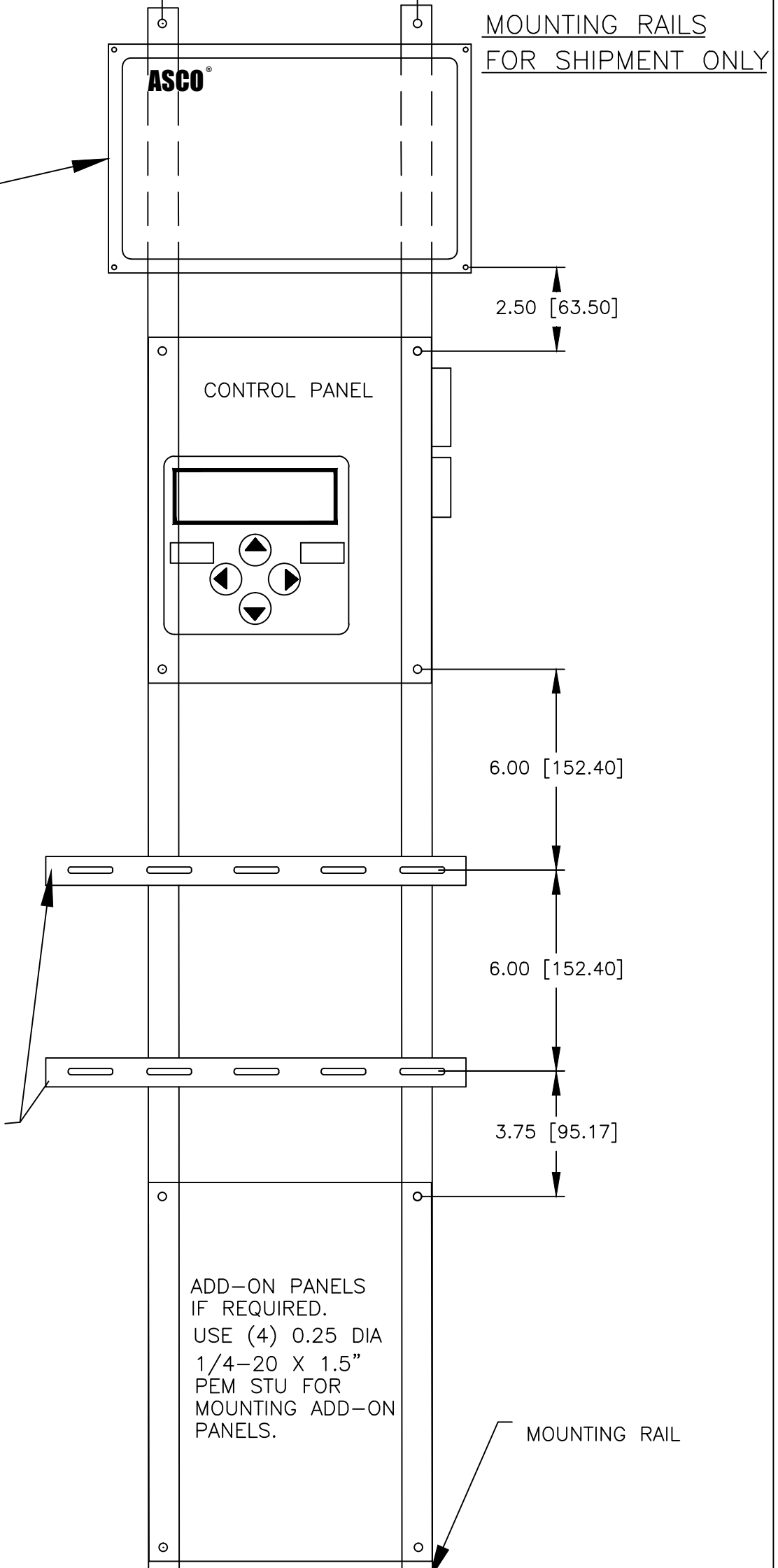
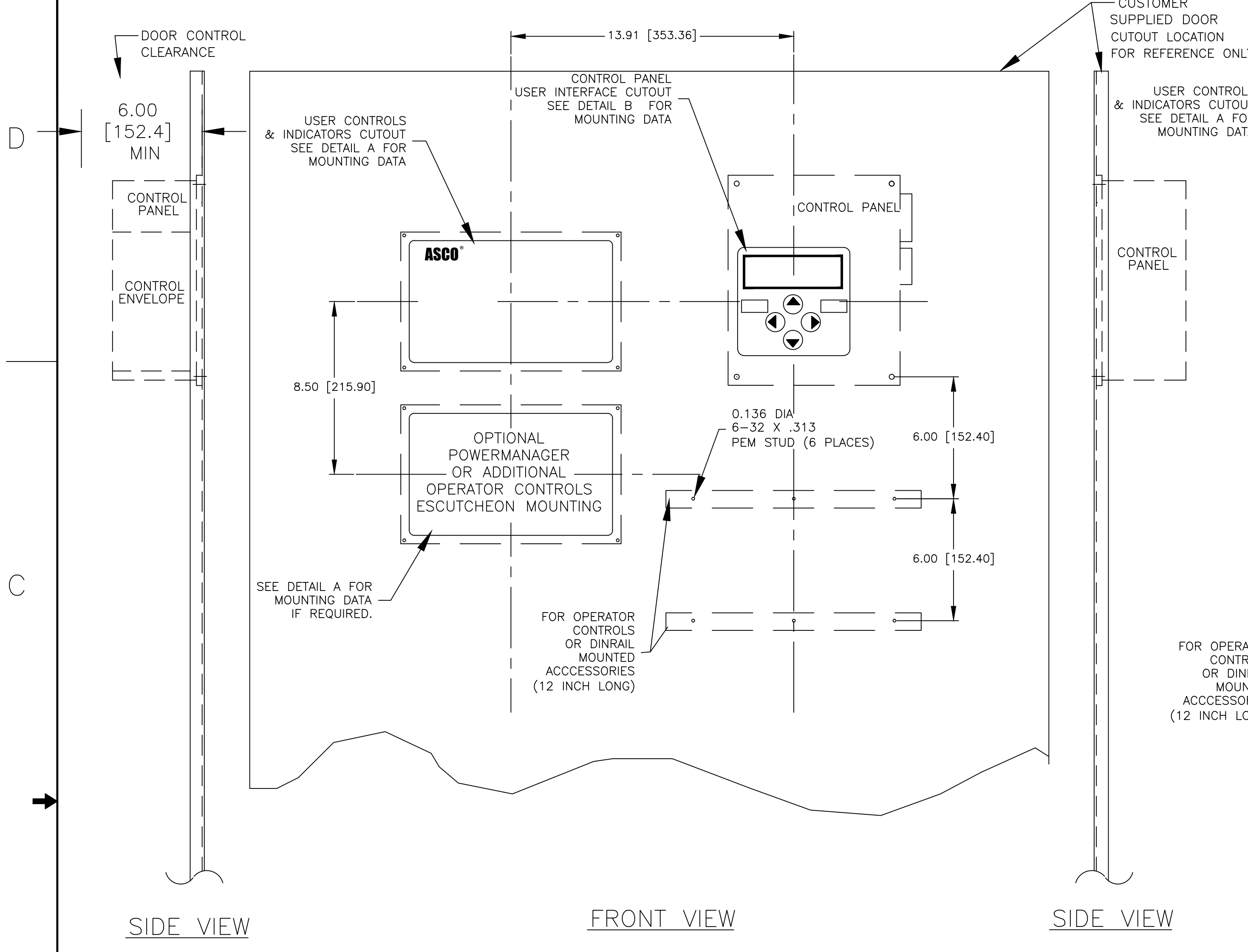
1. SUPPLIED WITH STANDARD MECHANICAL (SCREW TYPE) LUGS ON THE NORMAL, EMERGENCY & LOAD BUS STABS. ONE (1) LUG PER PHASE AND NEUTRAL SUITABLE FOR CONNECTION OF SIX (6) 1/0 AWG - 750MCM CU/AL CABLE.
2. OPTIONAL COPPER CRIMP LUGS MAY BE SUPPLIED. UP TO SIX (6) TWO HOLE, LONG BARREL CU CRIMP LUGS RATED FOR UP TO 600MCM. (REFER TO CRIMP LUG INSTALLATION DATA PROVIDED WITH UNIT FOR FULL INSTALLATION DETAILS).

**LUGS AND CT'S SHOWN FOR REFERENCE ONLY

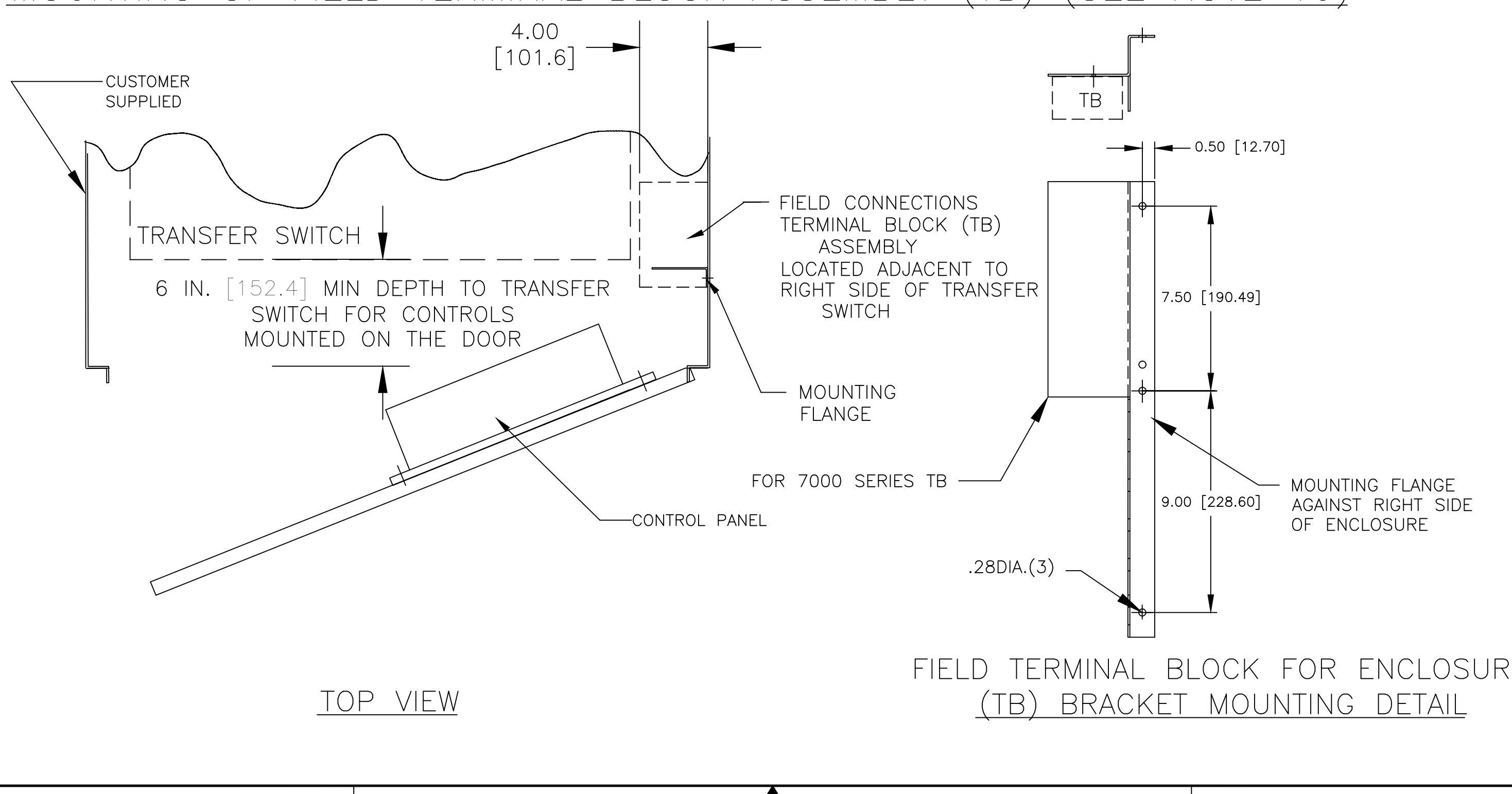
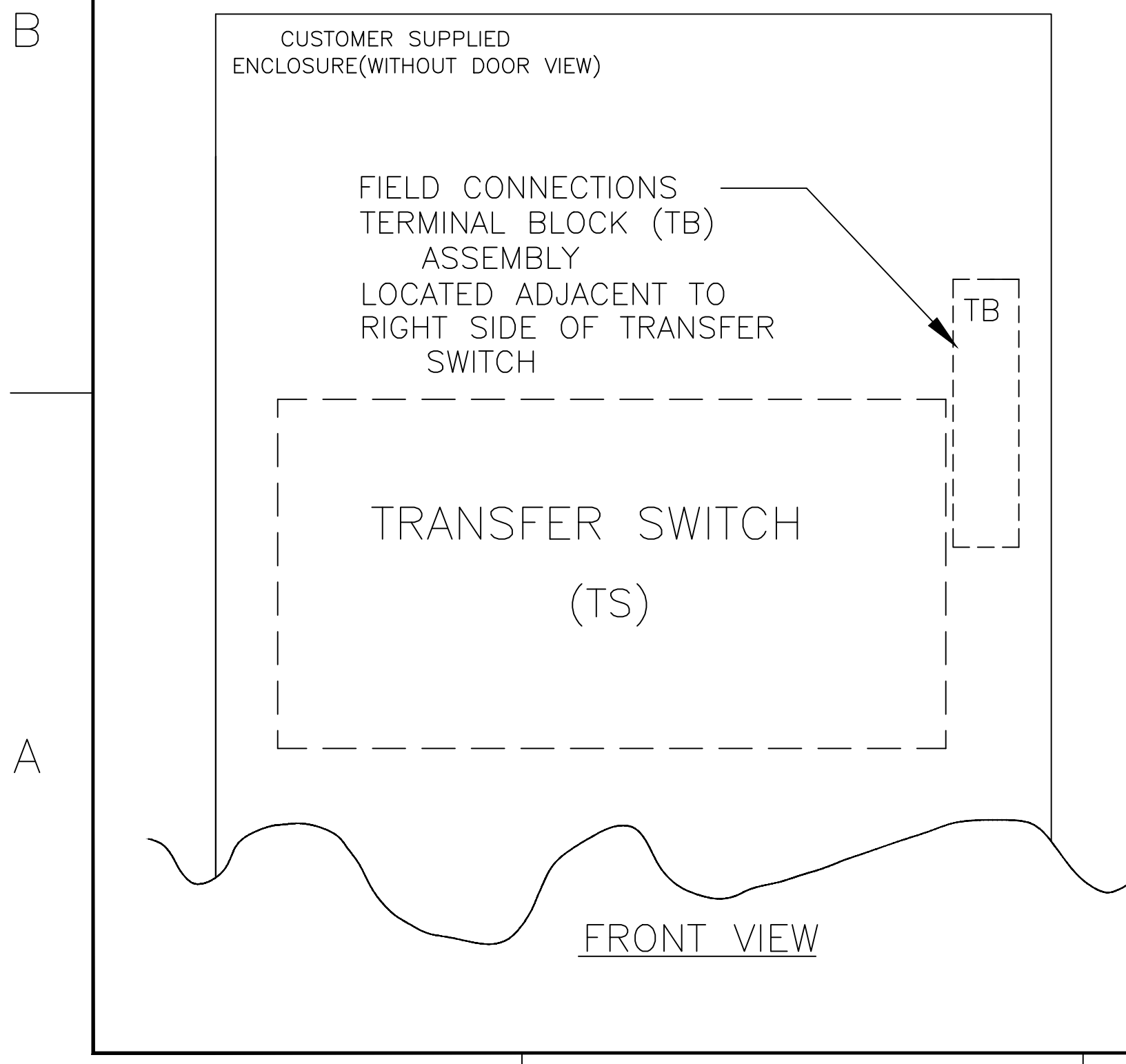
PROJECT NAME:		251864 DSC BK 11/25/14	
OUTLINE		SEE ECN	
MOUNTING		237043 RN 5-9-12	
S7000, SATS 800A - 2000A OPEN		ISSUE	
BY	DATE	MANUFACTURING TOLERANCES TO BE IN ACCORDANCE WITH ASCO PROCEDURE MP-1-003. FOR PLASTIC PARTS SEE MP-1-035	ASSEM. REF. NO.
RN	5-9-12	PROPERTY OF ASCO POWER TECHNOLOGIES. USE PERMITTED FOR OUR WORK ONLY. ALL RIGHTS OF DESIGN OR INVENTION ARE RESERVED.	COMPUTER GENERATED DRAWING
CHECKED		SCALE 3/16" = 1" SIZE DS	DWG. NO.
PROJECT APPROVAL		907770-002	REV. A
FINAL APPROVAL		ASCO POWER TECHNOLOGIES, L.P. FLORHAM PARK, NEW JERSEY 07932 U.S.A.	ECN NO. 251864 SHEET 1 OF 2

CONTROL PANEL & CONTROLS MOUNTING

CONTROL PANEL & CONTROLS MOUNTING DATA



MOUNTING OF FIELD TERMINAL BLOCK ASSEMBLY (TB) (SEE NOTE 10)



PROJECT NAME:		S7000, SATS 800A - 2000A OPEN	
REV. TO SHEET	ECN NO.	BY	APP.
—	237043	RN	5-9-12
ISSUE		DATE	
A		11/25/14	
251864 DSC BK		SEE ECN	
237043 RN		5-9-12	
SCALE 1/4" = 1"		SIZE DS	
DRAWN BY RN		DATE 5-9-12	
CHECKED		MANUFACTURING TOLERANCES TO BE IN ACCORDANCE WITH ASCO PROCEDURE MP-1-003. FOR PLASTIC PARTS SEE MP-1-055.	
PROJECT APPROVAL		ASSEM. REF. NO.	
FINAL APPROVAL		COMPUTER GENERATED DRAWING	
ASCO		ASCO POWER TECHNOLOGIES, L.P. FLORHAM PARK, NEW JERSEY 07932 U.S.A.	
DRAWING A		ECN 251864	
REV.		SHEET 2 OF 2	