

COMPOSITE OUTLINE FOR **ASCO** 7ATB/7ACTB/7ADTB 2600-3000 AMPERE AUTOMATIC TRANSFER & BYPASS-ISOLATION SWITCHES

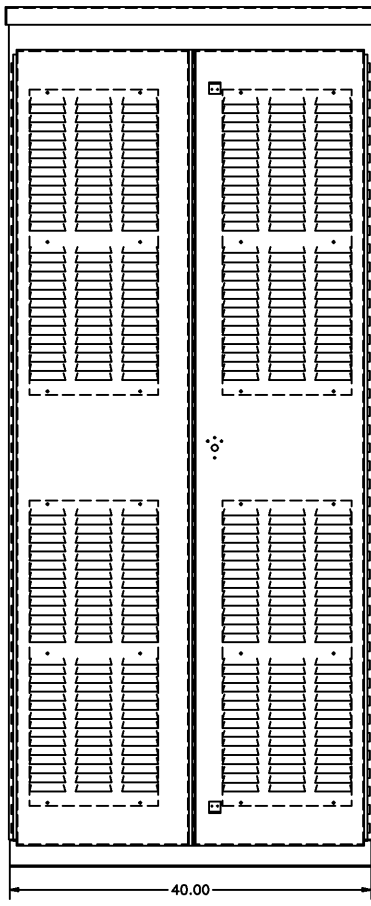
NEMA 3R ENCLOSURE

GENERAL NOTES

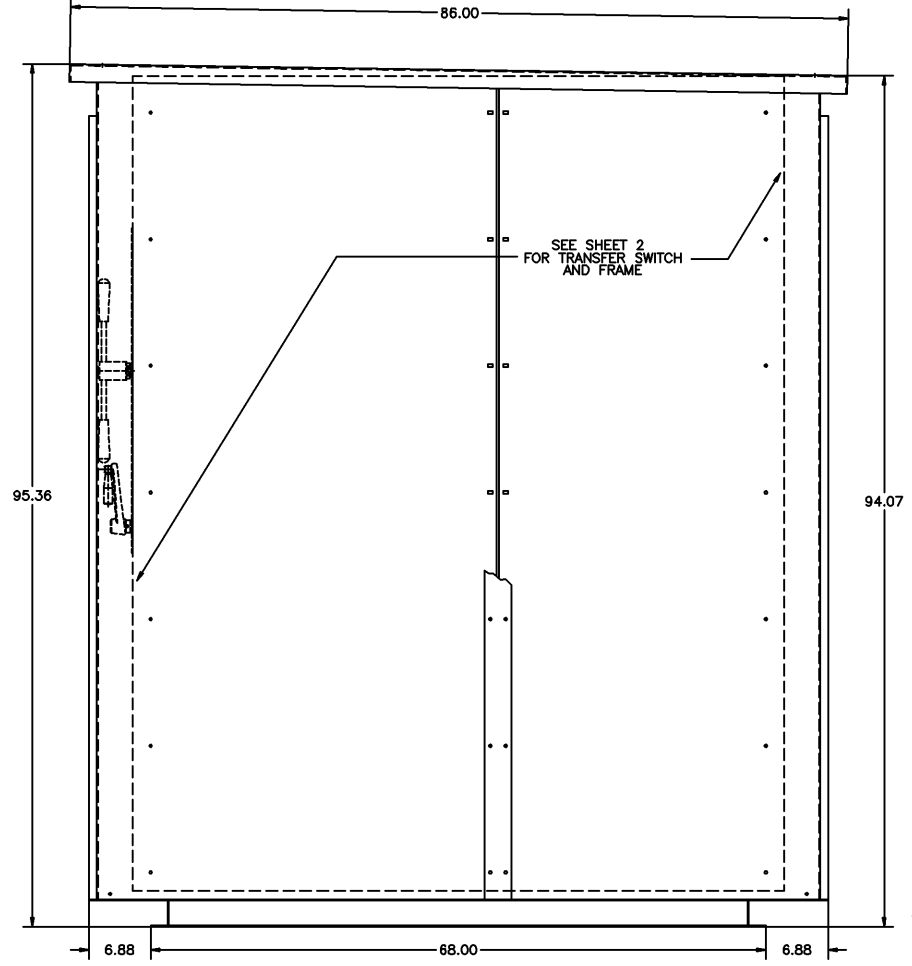
1. TYPE 3R ENCLOSURE. FREE STANDING. FLOOR MOUNTED. CODE GAUGE STEEL.
2. FRONT AND REAR DOOR HAVE STAINLESS STEEL PADLOCKABLE HANDLES.
3. FINISH: ASA 61 GRAY, POLYESTER POWDER. UL RECOGNIZED.
4. CONSTRUCTION IS IN ACCORDANCE WITH APPLICABLE REQUIREMENTS OF UL 891.
5. PADLOCKING PROVISIONS ARE INCLUDED:  
ISOLATION CRANK: THE TRANSFER SWITCH ISOLATION CRANK MAY BE PADLOCKED WITH THE TRANSFER SWITCH IN THE FULLY ISOLATED (DISCONNECTED POSITION).
6. UNIT CAN BE ADAPTED FOR CONNECTION OF BUS DUCT FLANGES. (CONSULT FACTORY)
7. A 20% RATED GROUND BUS IS PROVIDED AT THE BOTTOM REAR OF THE CABLE COMPARTMENT.
8. A FULL RATED NEUTRAL CONNECTION FOR EACH SOURCE AND THE LOAD IS OPTIONAL. WHEN PROVIDED IT IS IN ONE OF THE FOLLOWING FORMATS AS SPECIFIED BY THE CATALOG NO. NEUTRAL TYPE;
  - A: SOLID (COPPER BUS) NEUTRAL
  - B: 4th POLE (SWITCHED, NON-OVERLAPPING) NEUTRAL
  - C: OVERLAPPING (SWITCHED) NEUTRAL (NOT AVAILABLE ON 7ADTB UNITS)
9. CENTER OF GRAVITY
10. THE STANDARD SWITCH CONFIGURATION IS FOR TOP EMERGENCY, CENTER LOAD, AND BOTTOM NORMAL. OPTIONALLY, THE SWITCH MAY BE SUPPLIED WITH REVERSE SOURCES. (REFER TO THE WIRING DIAGRAM FURNISHED WITH EACH TRANSFER SWITCH TO DETERMINE TERMINATION POSITIONS).
11. EXTERIOR VENTS ARE SUPPLIED WITH POLYESTER DUST FILTERS.

CABLING NOTES

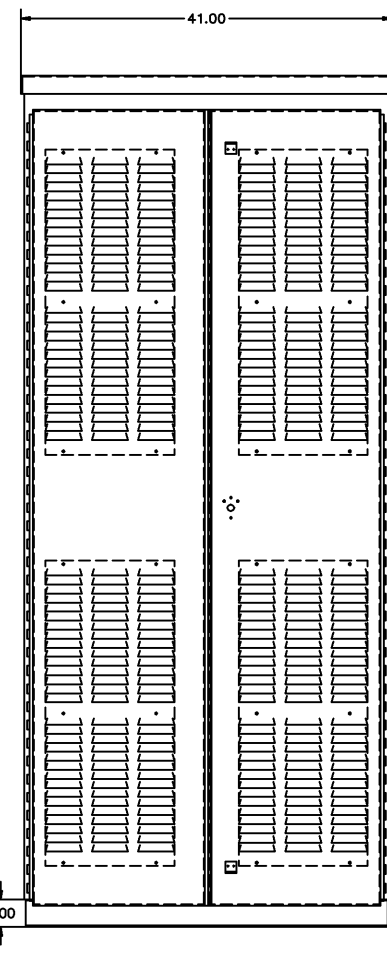
1. ALL SIZES SUPPLIED STANDARD WITH MECHANICAL (SCREW TYPE) LUGS ON THE NORMAL, EMERGENCY & LOAD BUS STABS. TWO (2) LUG PER PHASE AND NEUTRAL EACH SUITABLE FOR CONNECTION OF TEN (10) 1/0-750 MCM CU/AL CABLE FOR 2600-3000 AMP SWITCH. (SEE NOTE "E" BELOW).
  - A. LUG MATERIAL: ALUMINUM ALLOY 6061-T6 WITH ELECTRO TIN PLATED FINISH.
  - B. SCREW MATERIAL: ALUMINUM ALLOY 6262-T9 WITH ELECTRO TIN PLATED FINISH.
  - C. UL LISTED, CSA CERTIFIED.
  - D. LUG SCREW TIGHTENING TORQUE PER UL 486B: 19 FT-LBS.
  - E. SUITABLE WIRE BENDING SPACE IS PROVIDED FOR UP TO TEN (10) 600MCM CABLES PER TERMINAL FOR THE 2600-3000 AMP SWITCH PER NEC.
2. OPTIONAL COPPER CRIMP LUGS MAY BE SUPPLIED. UP TO EIGHT (8) TWO HOLE, LONG BARREL CU CRIMP LUGS RATED FOR UP TO 600MCM. (REFER TO CRIMP LUG INSTALLATION DATA PROVIDED WITH UNIT FOR FULL INSTALLATION DETAILS).
  - A. LUG MATERIAL: HIGH CONDUCTIVITY WROUGHT COPPER FINISH, ELECTRO TIN PLATED.
  - B. UL LISTED, CSA CERTIFIED.
  - C. LUG MOUNTING HARDWARE TIGHTENING TORQUE: (REFER TO WITHSTAND CURRENT RATING LABEL PROVIDED ON EACH TRANSFER SWITCH).
  - D. SUITABLE WIRE BENDING SPACE IS PROVIDED FOR UP TO EIGHT (8) 600MCM CABLES PER TERMINAL PER NEC.
3. GROUND LUGS ARE PROVIDED STANDARD AS FOLLOWS;  
(36) 1/0 - 750MCM CU/AL CABLE FOR THE 2600-3000 AMP SWITCH.
4. CONSULT FACTORY FOR OTHER TERMINATION REQUIREMENTS.



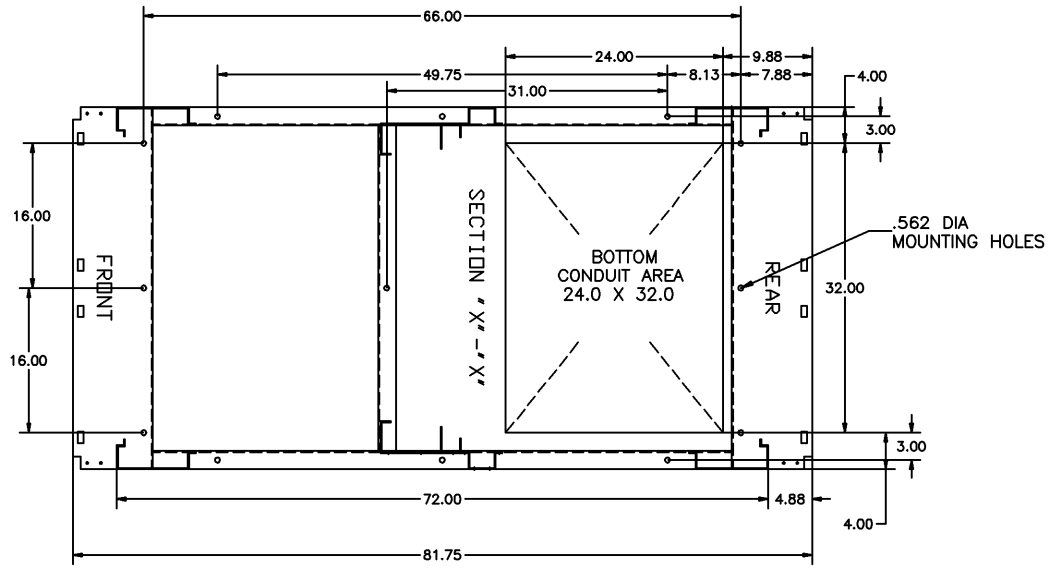
"FRONT VIEW"  
EXTERIOR VIEW



"RIGHT SIDE VIEW"  
EXTERIOR VIEW



"REAR VIEW"  
EXTERIOR VIEW



"BOTTOM VIEW"

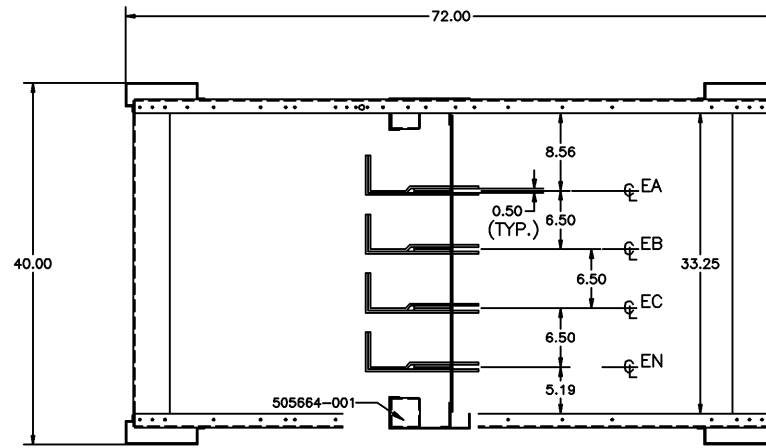
F	233665	WK	BK	09/09/11
SEE ECH				
E	231940	LK	RN	05/09/11
SEE ECH				
D	220447	TR	WK	10/26/08
SEE ECH				
C	208462	TR	WK	11/1/05
SEE ECH				
B	204234	AJM	WK	04/28/05
SEE ECH				
A	201243	TR	WK	07/30/04
SEE ECH				
-	159212	WK	WK	11/01/01
ISSUED				

PROJECT NAME:		REV. TO SHEET	EDN NO.	BY	APP.	DATE
COMPOSITE OUTLINE						
NEMA 3R VENTED LAYOUT		MANUFACTURING TOLERANCES TO BE IN ACCORDANCE WITH ASCO PROCEDURE MP-1-003. FOR PLASTIC PARTS SEE MP-1-005		ASSEM. REF. NO.		COMPUTER GENERATED DRAWING
DRAWN BY	DJB	DATE	11/01/01	SCALE	1:1	SIZE DS
CHECKED	WK	DATE	11/01/01	PROPERTY OF ASCO POWER TECHNOLOGIES. USE PERMITTED FOR OUR WORK ONLY. ALL RIGHTS OF DESIGN OR INVENTION ARE RESERVED.		
APPROVAL	WK	DATE	11/01/01	DRAW. NO. 727400-001		
FINAL APPROVAL				DRAWING F NO. 233665 SHEET 1 OF 2		

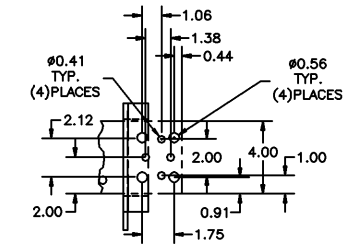


COMPOSITE OUTLINE FOR **ASCO** 7ATB/7ACTB/7ADTB 2600-3000 AMPERE AUTOMATIC TRANSFER & BYPASS-ISOLATION SWITCHES

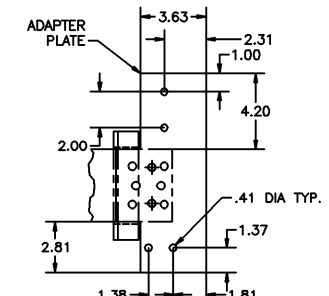
BUS LOCATION CHART		
	DIM.	2600/3000 A
EMER & NORM BUS TO BACK CORNER POST	"A"	32.80
EMER & NORM LUG TO BACK CORNER POST	"B"	29.50
LOAD LUG TO BACK CORNER POST	"C"	28.25
LOAD BUS TO BACK CORNER POST	"D"	30.75



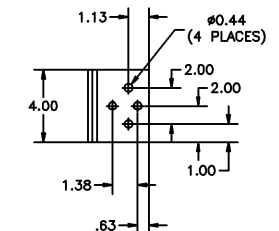
"TOP VIEW W/O COVERS"



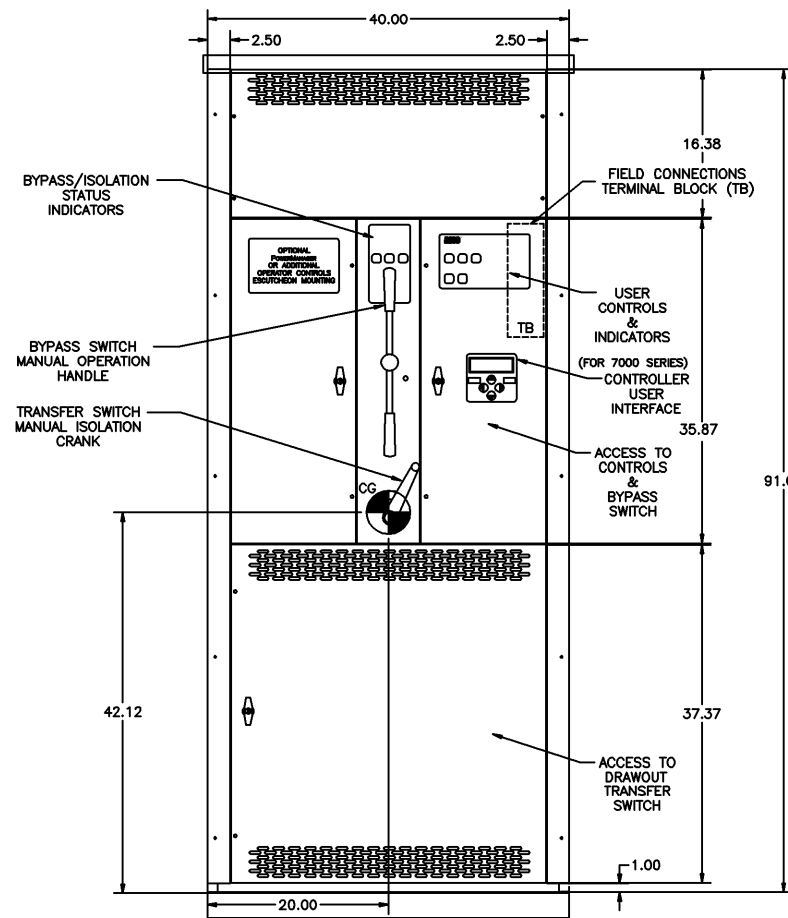
DETAIL (E & N)(1)  
2600 - 3000 AMP FOR BUSS PLATE AVAILABLE CONTACT AREA



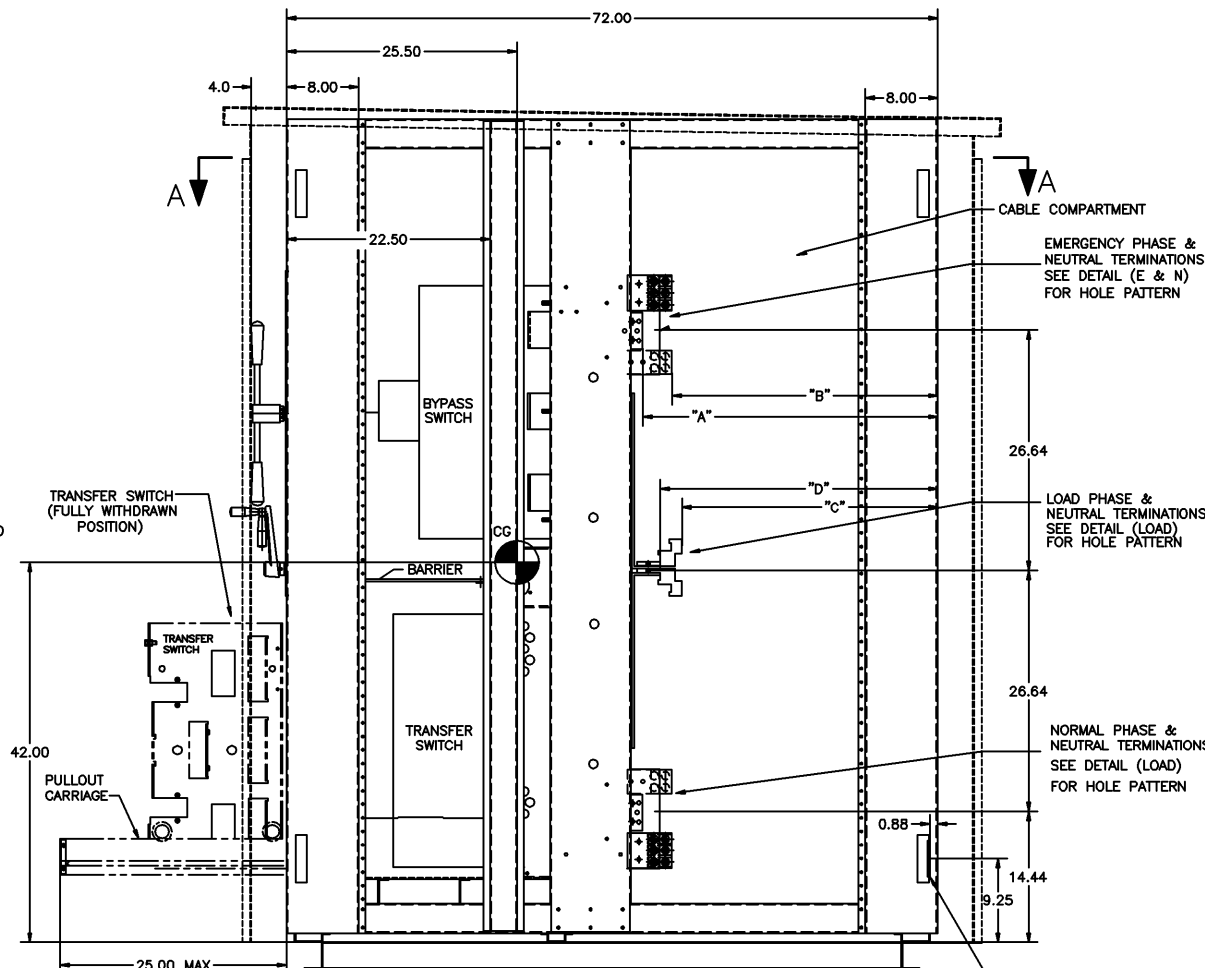
DETAIL (E & N)(2)  
2600 - 3000 AMP FOR ADAPTER PLATE AVAILABLE CONTACT AREA IF CUSTOMER BUSES TO "E & N" ADAPTER PLATE AND LUGS CAN BE REMOVED FOR BUSS CONNECTIONS (SEE DETAIL E & N)(1)



DETAIL (LOAD)  
2600 - 3000 AMP FOR BUSS PLATE AVAILABLE CONTACT AREA IF CUSTOMER BUSES TO "LOAD" LUGS CAN BE REMOVED FOR BUSS CONNECTIONS



"FRONT VIEW" INTERIOR VIEW



"RIGHT SIDE VIEW" INTERIOR VIEW

NOTE:  
TRANSFER SWITCH CAN BE IN FULLY ISOLATED (DISCONNECTED)

F	233665	WK	BK	09/09/11
	SEE ECH			
E	231940	LK	RN	05/09/11
	SEE ECH			
D	220447	TR	WK	10/25/08
	SEE ECH			
C	208482	TR	WK	11/1/05
	SEE ECH			
B	204234	AJM	WK	04/26/05
	SEE ECH			
A	201243	TR	WK	07/30/04
	SEE ECH			
-	159212	WK	WK	11/01/01
	ISSUED			

PROJECT NAME:		REV. TO SHEET	EDN NO.	BY	APP.	DATE
COMPOSITE OUTLINE						
NEMA 3R VENTED LAYOUT		MANUFACTURING TOLERANCES TO BE IN ACCORDANCE WITH ASCO PROCEDURE MP-1-003. FOR PLASTIC PARTS SEE MP-1-005		ASSEM. REF. NO.		COMPUTER GENERATED DRAWING
DRAWN BY	DJB	DATE	11/01/01	SCALE	1:1	SIZE DS
CHECKED	WK	DATE	11/01/01	PROPERTY OF ASCO POWER TECHNOLOGIES. USE PERMITTED FOR OUR WORK ONLY. ALL RIGHTS OF DESIGN OR INVENTION ARE RESERVED.		
APPROVED	WK	DATE	11/01/01	DRAWING NO. 727400-001		
FINAL APPROVAL				DRAWING F ECH NO. 233665 SHEET 2 OF 2		

ASCO POWER TECHNOLOGIES, LP.  
FLORHAM PARK, NEW JERSEY 07932 U.S.A.