

OUTLINE FOR ASCO® 4000 & 7000 SERIES 1000-2000 AMPERE "G" FRAME (ATS,ACTS,ADTS) REAR CONNECTED TRANSFER SWITCHES OPEN TYPE

GENERAL NOTES

1. THE STANDARD SWITCH CONFIGURATION IS FOR TOP EMERGENCY & LOAD AND BOTTOM NORMAL. OPTIONALLY, THE SWITCH MAY BE SUPPLIED WITH REVERSE SOURCES AND/OR BOTTOM LOAD. (REFER TO THE WIRING DIAGRAM FURNISHED WITH EACH TRANSFER SWITCH TO DETERMINE TERMINATION POSITIONS)
2. NEUTRAL CONFIGURATIONS:
AN OPTIONAL FULL RATED NEUTRAL CONFIGURATION FOR EACH SOURCE AND THE LOAD MAY BE PROVIDED. WHEN EQUIPPED IT IS IN ONE OF THE FOLLOWING FORMATS AS SPECIFIED BY THE CATALOG NUMBER NO. NEUTRAL TYPE:
(A) SOLID (COPPER BUS) NEUTRAL
(B) SWITCHED NEUTRAL POLE
(C) OVERLAPPING NEUTRAL POLE (NOT AVAILABLE ON ACTS/ADTS UNITS)
3. THE STANDARD MECHANICAL (SCREW TYPE) AL/CU TERMINAL LUGS ARE SHOWN FOR REFERENCE.
4. SWITCH NEUTRAL POLE IS SHOWN FOR REFERENCE.
5. WHEN INSTALLING CONDUCTORS, CONNECT TO SIMILARLY MARKED PHASES OF NORMAL, EMERGENCY & LOAD.
6. ALL INTERNAL CONNECTIONS ARE MADE AT FACTORY.
7. MAINTAIN ELECTRICAL CLEARANCE OF 1 INCH (25.4 mm) BETWEEN LIVE METAL PARTS AND GROUNDED METAL.
8. WHEN MOUNTING THE TRANSFER SWITCH IN THE ENCLOSURE, THE CONTROL PANEL(S) AND OPERATOR CONTROLS SHOULD BE MOUNTED ON THE INSIDE, REAR SURFACE OF THE DOOR. 6 IN. MIN. DEPTH TO TRANSFER SWITCH FOR CONTROLS IS REQUIRED.
9. THE CONTROL PANEL(S) IS CONNECTED TO THE TRANSFER SWITCH BY A HARNESS WITH A QUICK DISCONNECT PLUG(S). THE HARNESS EXITS THE TRANSFER SWITCH ON THE RIGHT SIDE. CONSULT FACTORY FOR EXTENSION HARNESSES.
10. OPTIONAL ACCESSORY ADD-ON PANELS.
11. FOR TYPE 1 ENCLOSURE SEE DETAIL A -1 AND DETAIL B -1 FOR CUTOUT DATA. FOR TYPE 3R, 4, & 12 ENCLOSURE SEE DETAIL A -2 & DETAIL B -2 FOR CUTOUT DATA. GASKETS AND BEZELS ARE PROVIDED FOR TYPE 3R, 4, & 12 ENCLOSURE.
12. CUSTOMER TERMINAL BLOCKS:
FOR ALL 7000 SERIES UNITS THE TB WILL BE MOUNTED ON THE UPPER RIGHT INSIDE OF ENCLOSURE AS INDICATED ON THE NEXT PAGE.
FOR 4000 SERIES UNITS TB WILL BE MOUNTED ON THE TRANSFER SWITCH FRAME AS INDICATED ON THIS PAGE.

SERIES	CATALOG PREFIX
4000	4ATS
	4NTS
	4ACTS
	4NCTS
	4ADTS
7000	7ATS
	7NTS
	7ACTS
	7NCTS
	7ADTS
	7NDTS

SIZE	CABLE ACCOMMODATION (PER PHASE & NEUTRAL)
1000-1200	SCREW TYPE (STANDARD) - (4) 1/0 - 750 MCM AL/CU
1600-2000	SCREW TYPE (STANDARD) - (6) 1/0 - 750 MCM AL/CU

NOTE: CONSULT FACTORY FOR OTHER CABLING & TERMINATION REQUIREMENTS.

APPROXIMATE SHIPPING WEIGHT, LBS (KG)

AMP SIZE	POLES	WEIGHT
1000 TO 2000	2	505 (229)
	B2	555 (252)
	C2	555 (252)
	3	555 (252)
	B3	605 (274)
C3	605 (274)	

AMP SIZE	DIMENSIONS									
	A	B	C	D	E	F	G	H	J	K
1000 & 1200	33.27 845.1	28.00 711.2	24.00 609.6	31.75 806.5	6.88 174.8	—	8.20 208.3	17.27	1.75 44.45	1.09 27.69
1600 & 2000	33.27 845.1	28.00 711.2	24.00 609.6	31.75 806.5	6.88 174.8	—	8.20 208.3	17.27	1.75 44.45	1.09 27.69

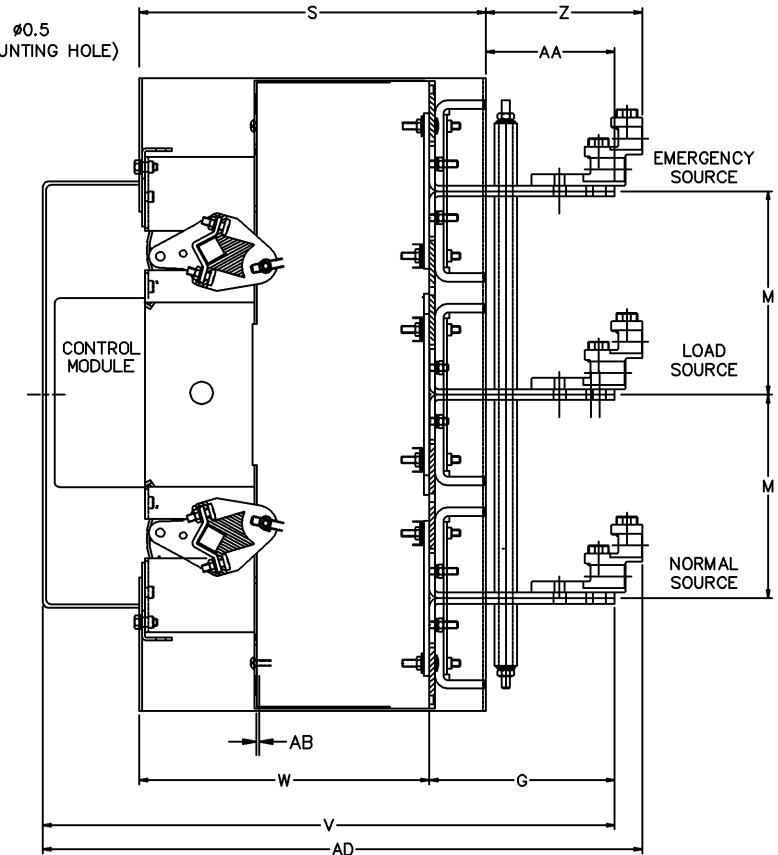
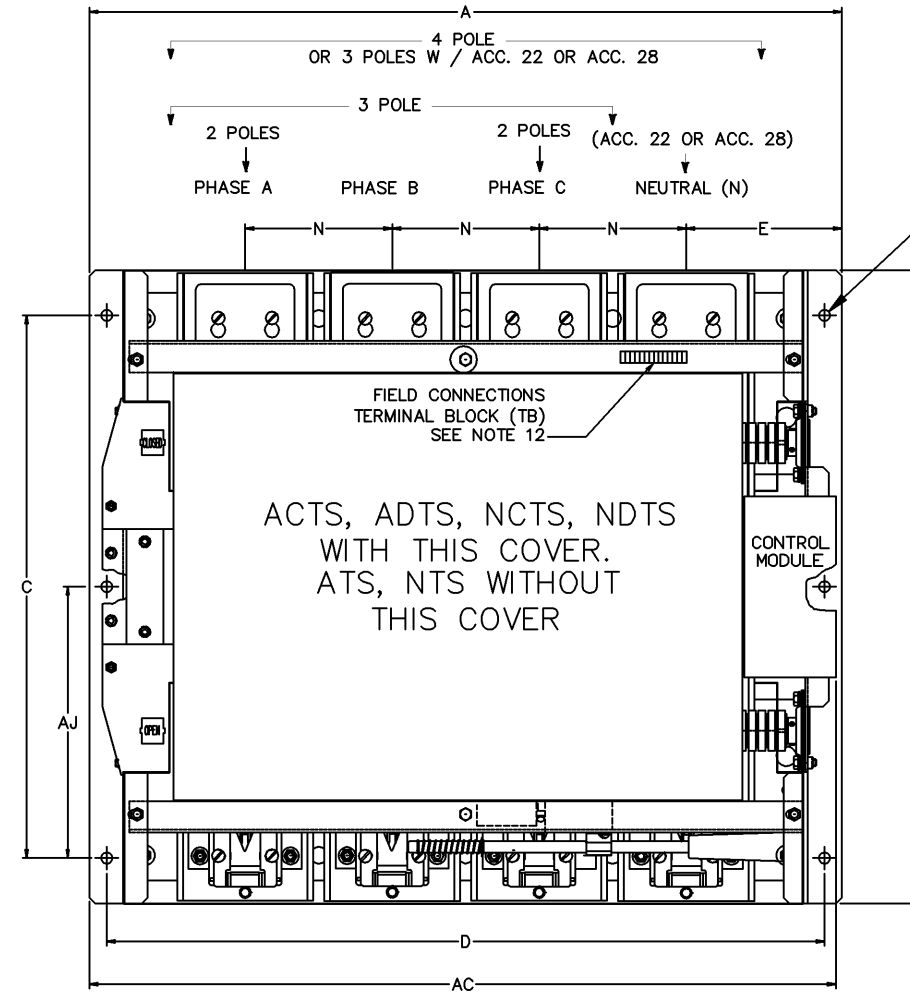
AMP SIZE	DIMENSIONS									
	L	M	N	P	Q	R	S	T	U	V
1000 & 1200	1.37 34.80	9.00 228.6	6.50 165.1	2.18 55.37	—	2.00 50.8	14.9 378.5	—	—	25.29 642.4
1600 & 2000	1.37 34.80	9.00 228.6	6.50 165.1	2.18 55.37	—	2.00 50.8	14.9 378.5	—	—	25.29 642.4

AMP SIZE	DIMENSIONS									
	W	X	Y	Z	AA	AB	AC	AD	AE	AF
1000 & 1200	12.36 313.9	—	—	6.95 176.5	5.69 144.5	0.112 2.85	33.00 838.2	26.30 668.0	—	—
1600 & 2000	12.36 313.9	—	—	6.90 175.3	5.69 144.5	0.112 2.85	33.00 838.2	26.30 668.0	—	—

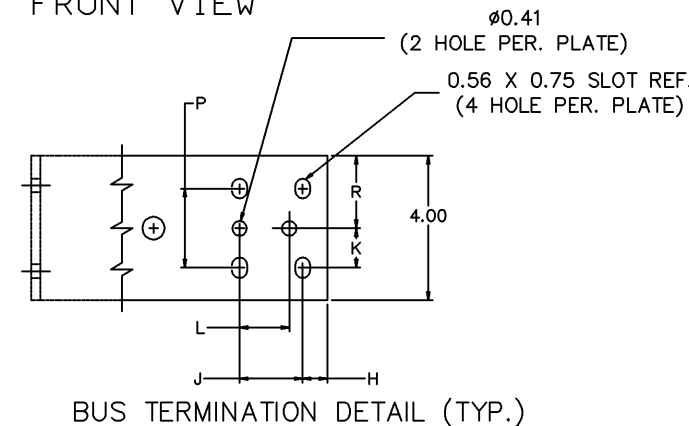
AMP SIZE	DIMENSIONS		
	AG	AH	AJ
1000 & 1200	—	—	12.00 304.8
1600 & 2000	—	—	12.00 304.8

MINIMUM REQUIRED ENCLOSURE SIZE INCH (mm)			
SWITCH RATING (AMPS)	HEIGHT	WIDTH	DEPTH
1000 & 2000	90 (2286)	38 (965)	48 (1219)

NOTE: "2000 AMPS" NEEDS VENTILATION TOP AND BOTTOM.



FRONT VIEW



AMP SIZE	BUS BAR PER PHASE BOLTING SURFACE
1000 THRU 2000	0.25" X 4.00", 6.4mm X 101.6mm

SIDE VIEW

F	211621	BK	BK	01/30/07
E	208330	PBP	WK	04/24/06
D	205190	WK	WK	07/20/05
C	164539	WK	WK	08/07/03
B	154988	WK	WK	6/28/00
A	149724	BK	WK	11/5/98
—	146595	YZ	SDH	12/97

PROJECT NAME:			SUBSIDIARY DISTRIBUTION		
OUTLINE 4000/7000 SERIES			AE	AM	AN
MANUFACTURING TOLERANCES TO BE IN ACCORDANCE WITH ASCO PROCEDURE MP-1-003. FOR PLASTIC PARTS SEE MP-1-005.			AV	AA	PS
ASSEMBLY REF. NO.			AP	AC	AS
COMPUTER GENERATED DRAWING			AS	AR	AT
BY	DATE	SCALE	1:1	ACAD	FILE
DRWN BY	YZ 12/97	SCALE	1:1	ACAD	FILE
CHECKED		SIZE	1:1	ACAD	FILE
TESTING APPROVAL		DRG. NO.	DS 619590		
FINAL APPROVAL	SDH 12/97	CHANGE LETTER	211621		

ASCO ASCO POWER TECHNOLOGIES, L.P.
FLORHAM PARK, NEW JERSEY 07932 U.S.A.

