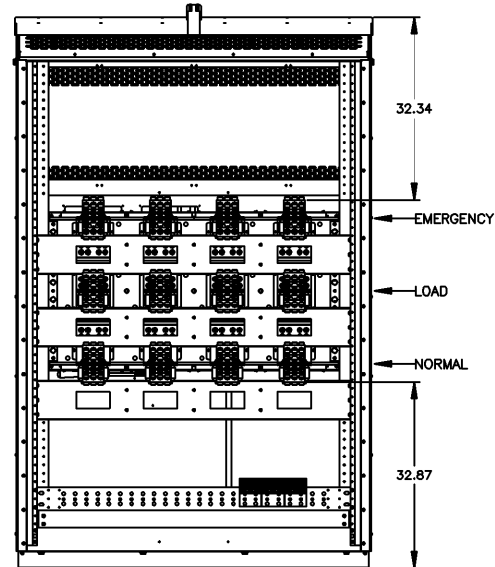
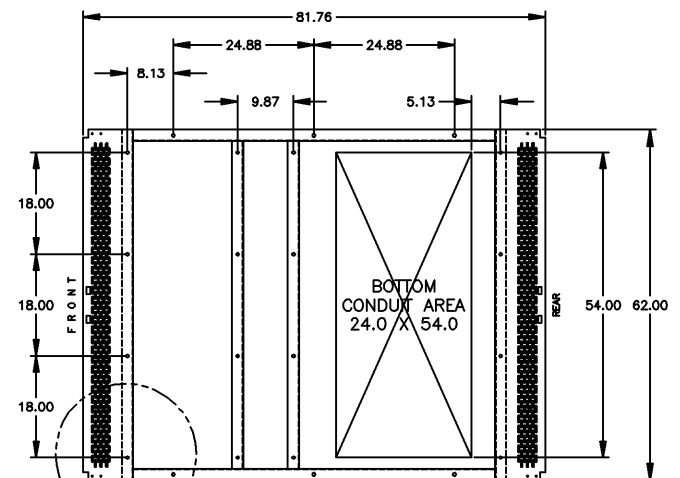


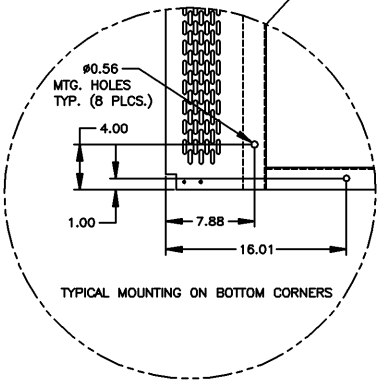
# OUTLINE FOR ASCO® 4000 & 7000 SERIES 4000 AMPERE "G" FRAME (ATS,ACTS,ADTS) REAR CONNECTED TRANSFER SWITCHES TYPE 3R SECURE ENCLOSURE



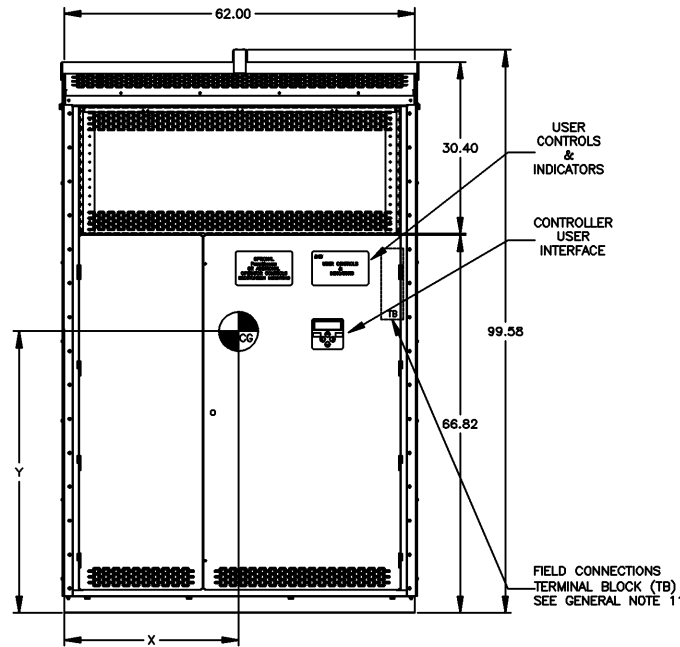
REAR VIEW  
(OUTER DOORS REMOVED)



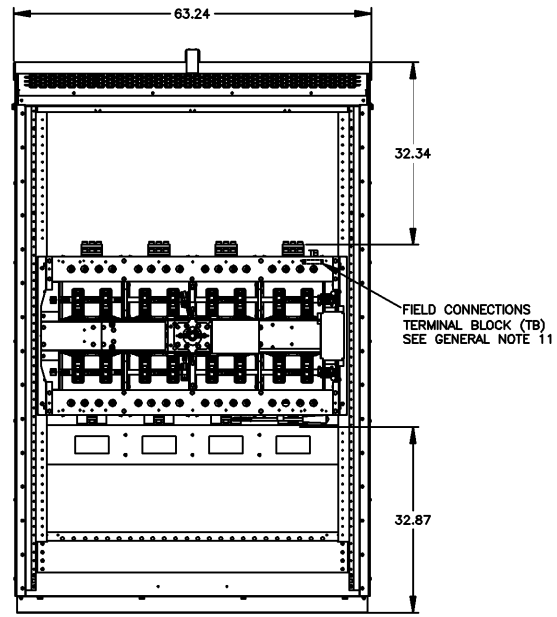
PLAN VIEW



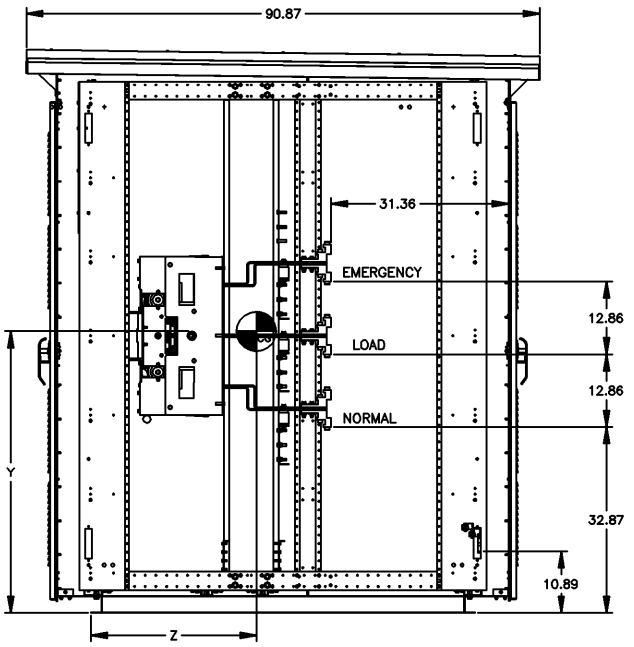
TYPICAL MOUNTING ON BOTTOM CORNERS



FRONT VIEW  
(OUTER DOORS REMOVED)



FRONT VIEW  
WITHOUT COVERS



RIGHT SIDE VIEW  
WITHOUT COVERS

### GENERAL NOTES

- TYPE 3R RAIN PROOF ENCLOSURE. FREE STANDING. FLOOR MOUNTED. CODE GAUGE FORMED FRAME CONSTRUCTION.
- EXTERIOR DOORS WITH PAD LOCKABLE HANDLES.
- FINISH: ANSI 61 GRAY, POLYESTER POWDER STANDARD. OTHER ANSI COLORS AVAILABLE CONSULT FACTORY UL RECOGNIZED.
- CONSTRUCTION IS IN ACCORDANCE WITH APPLICABLE REQUIREMENTS OF UL 1008.
- RECOMMENDED CLEARANCES:  
FRONT: 38 INCHES  
REAR: 36 INCHES
- A 20% RATED GROUND BUS IS PROVIDED.
- UNIT IS DESIGNED FOR COMBINATION TOP AND BOTTOM CABLE ENTRY. THE STANDARD SWITCH CONFIGURATION IS FOR EMERGENCY SOURCE ON TOP AND NORMAL SOURCE ON BOTTOM. OPTIONALLY, THE SWITCH MAY BE SUPPLIED WITH REVERSE NORMAL & EMERGENCY SOURCES. (REFER TO THE WIRING DIAGRAM FURNISHED WITH EACH TRANSFER SWITCH TO DETERMINE TERMINATION POSITIONS).
- NEUTRAL CONFIGURATIONS:  
AN OPTIONAL FULL RATED NEUTRAL CONFIGURATION FOR EACH SOURCE AND THE LOAD MAY BE PROVIDED. WHEN EQUIPPED IT IS IN ONE OF THE FOLLOWING FORMATS AS SPECIFIED BY THE CATALOG NUMBER NO. NEUTRAL TYPE:  
(A) SOLID (COPPER BUS) NEUTRAL  
(B) SWITCHED NEUTRAL POLE  
(C) OVERLAPPING NEUTRAL POLE (NOT AVAILABLE ON ACTS/ADTS UNITS)
- CENTER OF GRAVITY—SEE TABLE BELOW
- NO KNOCKOUTS ARE PROVIDED.
- CUSTOMER TERMINAL BLOCKS:  
FOR ALL 7000 SERIES UNITS THE TB WILL BE MOUNTED ON THE UPPER RIGHT INSIDE OF ENCLOSURE. FOR 4000 SERIES UNITS TB WILL BE MOUNTED ON THE TRANSFER SWITCH FRAME AS INDICATED.
- EXTERIOR VENTS ARE SUPPLIED WITH POLYESTER DUST FILTERS.

### LUG NOTES

- SUPPLIED STANDARD WITH MECHANICAL (SCREW TYPE) LUGS.  
A. UL LISTED, CSA CERTIFIED.  
B. LUG SCREW TIGHTENING TORQUE PER UL 488B: (REFER TO WITHSTAND CURRENT RATING LABEL PROVIDED WITH UNIT FOR FULL INSTALLATION DETAILS)
- OPTIONAL LUGS MAY BE SUPPLIED.  
A. UL LISTED, CSA CERTIFIED.  
B. LUG MOUNTING HARDWARE TIGHTENING TORQUE: (REFER TO LUG INSTALLATION DATA PROVIDED WITH UNIT FOR FULL INSTALLATION DETAILS).
- CONSULT FACTORY FOR OTHER TERMINATION REQUIREMENTS.
- GROUND LUGS ARE PROVIDED.

### CABLING NOTES

- SUPPLIED WITH STANDARD MECHANICAL (SCREW TYPE) LUGS ON THE NORMAL, EMERGENCY & LOAD BUS STABS. TWO (2) LUGS PER PHASE AND NEUTRAL. SUITABLE FOR CONNECTION OF TWELVE (12) 1/0 - 750MCM CU/AL CABLES.  
A. SUITABLE WIRE BENDING SPACE IS PROVIDED PER NEC.
- OPTIONAL LUGS.  
A. REFER TO LUG INSTALLATION DATA PROVIDED WITH THE UNIT FOR FULL INSTALLATION DETAILS.  
B. SUITABLE WIRE BENDING SPACE IS PROVIDED PER NEC.
- GROUND LUGS ARE PROVIDED STANDARD AS FOLLOWS:  
(18) 1/0 - 750MCM CU/AL CABLES

TABLE 1.0 SHIPPING WEIGHT/LBS, AND CENTER OF GRAVITY

AMP SIZE	POLES	WEIGHTS LBS	CENTER OF GRAVITY		
			X INCHES	Y INCHES	Z INCHES
4000	2	3261	30.1	49.9	29.7
	A2	3413	30.9	49.9	29.7
	B2	3467	31.2	49.9	29.5
	C2	3447	31.1	49.9	29.6
	3	3467	29.7	49.9	29.5
	A3	3619	30.5	49.8	29.5
7000	B3	3673	30.8	49.8	29.3
	C3	3654	30.7	49.8	29.4

TABLE 2.0 CATALOG PREFIX

TS SERIES	PREFIX
4000	4ATS
	4NTS
	4ACTS
	4NCTS
	4ADTS
	4NDTS
7000	7ATS
	7NTS
	7ACTS
	7NCTS
	7ADTS
	7NDTS

D	231920	LK	RN	05/06/11
SEE ECH				
C	228039	BWM	BWM	1/28/10
UPDATE TABLE 1.0				
B	222265	WK	BK	3/19/09
REMOVE LIFTING BRACKETS				
A	222147	BWM	BWM	3/10/09
REMOVE LIFTING HOOKS				
	221267	BWM	JPB	12/31/08
ISSUE				

PROJECT NAME: \_\_\_\_\_

OUTLINE  
4000/7000 SERIES,ATS,ACTS,ADTS  
4000 AMP, TYPE 3R SECURE

MANUFACTURING TOLERANCES TO BE IN ACCORDANCE WITH ASCO PROCEDURE MP-1-003. FOR PLASTIC PARTS SEE MP-1-005.

ASSEMB. REF. NO. \_\_\_\_\_

COMPUTER GENERATED DRAWING

SCALE: 1/11 SIZE: DS

DWG. NO. 844459-002

REV. D ECH. NO. 231920

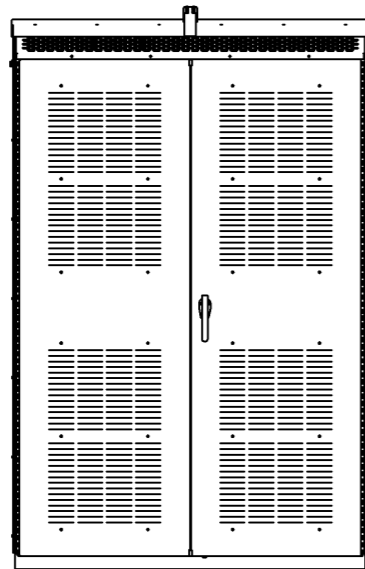
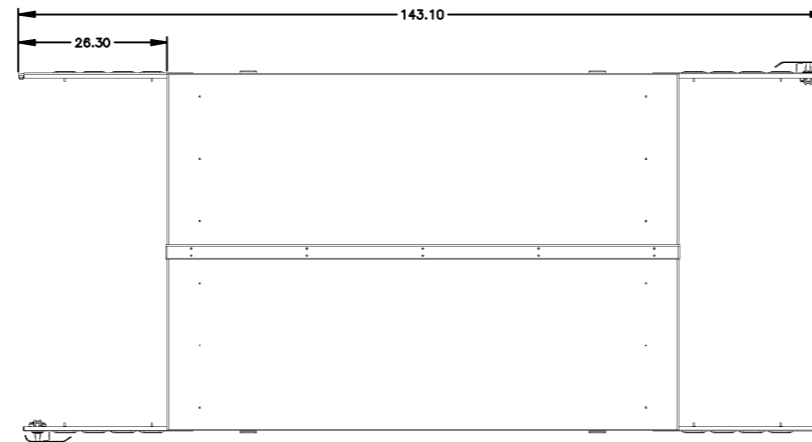
ASC® ASCO POWER TECHNOLOGIES, LP.  
FLORHAM PARK, NEW JERSEY 07932 U.S.A.

REV. \_\_\_\_\_

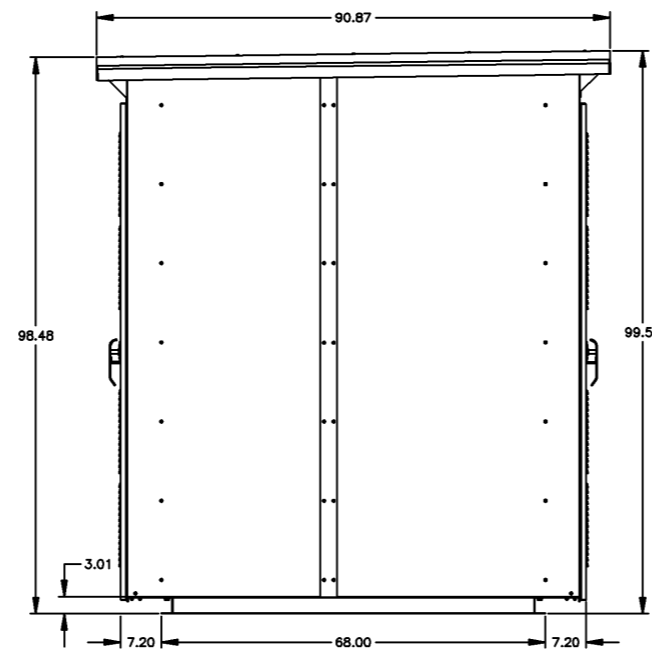
8 7 6 5 4 3 2 1

**OUTLINE FOR ASCO® 4000 & 7000 SERIES 4000 AMPERE "G" FRAME (ATS,ACTS,ADTS) REAR CONNECTED TRANSFER SWITCHES TYPE 3R SECURE ENCLOSURE**

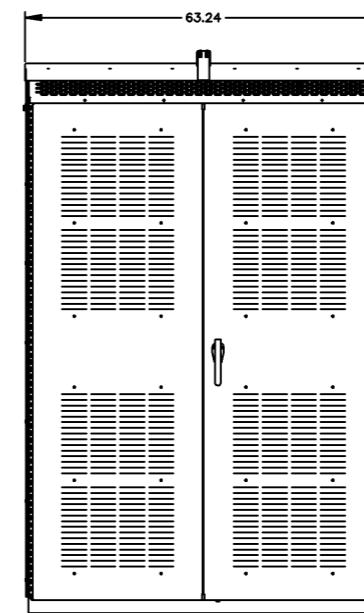
TOP VIEW  
FRONT & REAR DOORS OPENED



FRONT VIEW  
WITH COVERS



RIGHT SIDE VIEW  
WITH COVERS



REAR VIEW  
WITH COVERS

D	231920	LK	RN	05/06/11
	SEE ECN			
C	226039	BWM	BWM	1/28/10
	UPDATE TABLE 1.0			
B	222265	WK	BK	3/19/09
	REMOVE LIFTING BRACKETS			
A	222147	BWM	BWM	3/10/09
	REMOVE LIFTING BRACKETS			
	221267	BWM	JPB	12/31/08
	ISSUE			

PROJECT NAME:		REV. TO SHEET	ECN NO.	BY	APP.	DATE
OUTLINE						
4000/7000 SERIES,ATS,ACTS,ADTS						
4000 AMP, TYPE 3R SECURE						
BY	DATE	MANUFACTURING TOLERANCES TO BE IN ACCORDANCE WITH ASCO PROCEDURE MP-1-003. FOR PLASTIC PARTS SEE MP-1-055		ASSEM. REF. NO.		COMPUTER GENERATED DRAWING
DRAWN BY	BWM	12/31/08				SCALE 1:1 SIZE DS
CHECKED	JPB	12/31/08	PROPERTY OF ASCO POWER TECHNOLOGIES. USE PERMITTED FOR OUR WORK ONLY. ALL RIGHTS OF DESIGN OR INVENTION ARE RESERVED.			DWG. NO. 844459-002
TRICKERY APPROVAL						DRAWING D ECN 231920 SHEET 2 OF 2
FINAL APPROVAL	JPB	12/31/08	ASCO® ASCO POWER TECHNOLOGIES, L.P. FLORHAM PARK, NEW JERSEY 07832 U.S.A.			

