

ASCO 185L SERIES POWER TRANSFER LOAD CENTER, SINGLE PHASE/3 WIRE, RATED 200 AMPS, 240/120V 60 HZ, INDOOR TYPE I ENCLOSURE

Notes:

- Power Transfer Load Center constructed in accordance with UL 67 Standard for Panelboards. Suitable for use as Service Equipment. The Power Transfer Load Center is intended for use ONLY in Optional Standby Systems in accordance with UL 1008 Standard for Transfer Switching Equipment and the National Electrical Code, NEC, NFPA, Article 702.
- Power Transfer Switch: ASCO D185, 2 pole, 200 amperes, 240 vac. Listed to UL 1008, Standard for Transfer Switching Equipment.

Automatic Type:

Transfer Controller - ASCO Group 4 Automatic Transfer Switch Controller including: (Refer to 185L Series Operator's Manual, PN 381333-345, supplied with the transfer switch for detailed information)

User Controls & Status Indication

 - Load on Preferred Source (Utility) LED indicator - green
 - Load on Alternate Source (Generator) LED indicator - red
 - Preferred Source (Utility) Acceptable LED indicator - green
 - Alternate Source (Generator) Acceptable LED indicator - red
 - Automatic Engine-Generator Exerciser (Setting & Engine Running) LED indicator
 - Transfer Test membrane pushbutton
 - Bypass Time Delay (active time delay or engine-generator exercise period) membrane pushbutton
 - Set Engine Exerciser membrane pushbutton

Time Delays

 - Override Momentary Preferred Source (Utility) Outages - Factory set at 3 seconds
 - Transfer to Alternate Source (Generator) - Factory set at 10 seconds

Override Momentary Alternate Source (Generator) Outages - Factory set at 4 seconds
 Retransfer to Preferred Source (Utility) - 5 minutes/fix
 Engine-Generator Unloaded Running (Cooldown) Period - Factory set at 2 minutes

Control Signals

Engine-Generator Automatic Starting Controls - (1) form C contact

Remote Controls (Using Customer Supplied Contacts)

Remote Test Feature
 Remote Test with Automatic Retransfer to Preferred Source (Utility) Feature
 Bypass Time Delay on Retransfer to Preferred Source (Utility) Feature

Manual Type:

Manually operated transfer switch with external operating handle. Quick make - Quick break, high speed transfer operating mechanism. Includes piddockable operating handle. Handle position indicates the source that transfer switch is connected to.

Operator interface not included.

3) Short Circuit Ratings:

(Mains): Preferred (Utility) Source & Emergency (Generator) source:
 10kA at 240vac. Square-D QBL22200, 2 pole, 200a circuit breaker.

(Branch): Branch ratings as follows when used with the specified branch devices.
 10kA using Square-D QO catalog prefix circuit breakers rated: 1 pole 10-70a,
 2 pole 10-125a.
 10kA using Square-D QO-GFI catalog prefix circuit breakers rated: 1 pole 15-30a,
 2 pole 15-60a.
 10kA using Square-D QO-AFI catalog prefix circuit breakers rated: 1 pole 15-20a.

4) Enclosure: Listed to UL 50 Standard for Enclosures for Electrical Equipment, Type 1 Indoor. Constructed of 16 gauge steel. Finish - ANSI 49 gray, polyester powder paint.

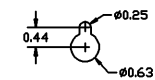
5) Load Center: Square-D QO 200 amps (max.) 120/240vac, with 100% rated neutral. 42 spaces, accepts plug-on branch devices.

6) Grounding provisions for Preferred (Utility) Source, Alternate (Generator) Source and Load.

7) Neutral provisions for Preferred (Utility) Source, Alternate (Generator) Source, Load (Factory connected), and grounding electrode. Includes main bonding jumper for service entrance use (shipped disconnected).

8) When used for Service Entrance the main bonding jumper must be removed from the Disconnected position and installed in the Connected position. (Refer to details 'A' and 'B')

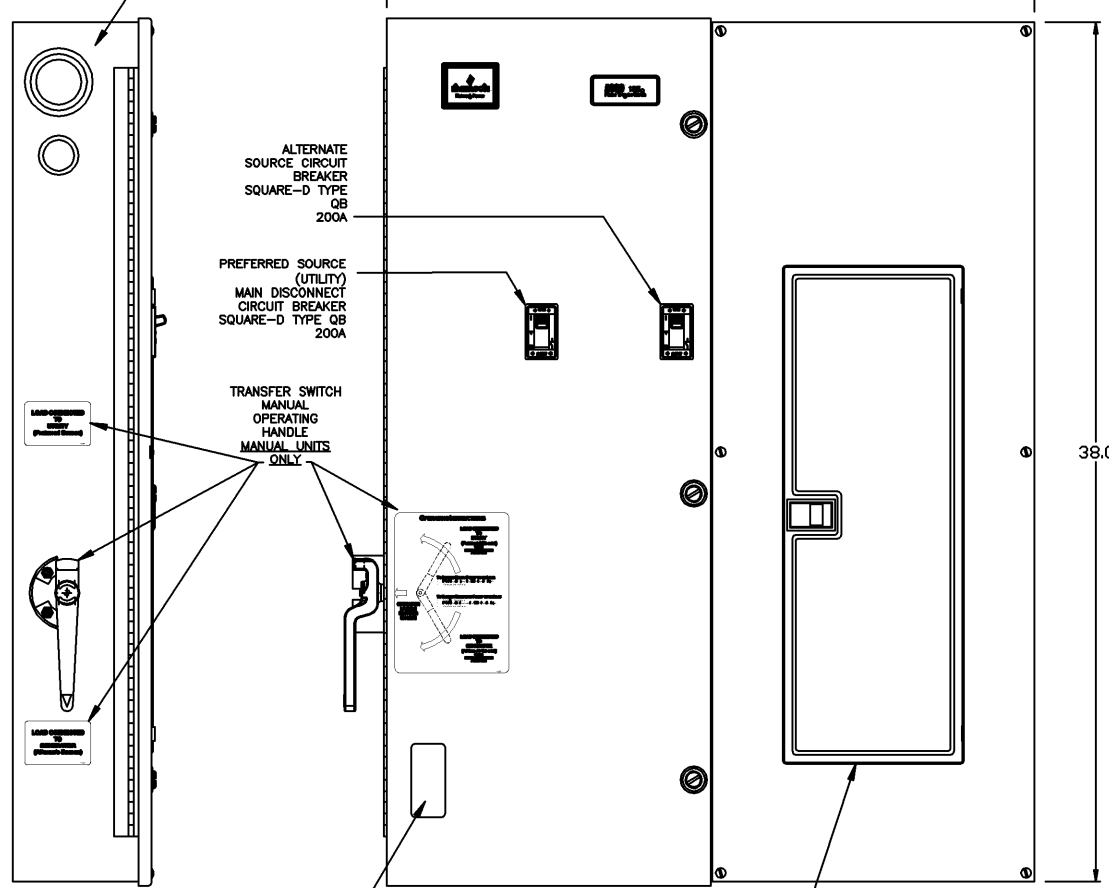
9) The unit is to be shipped from the factory with the main bonding jumper installed in the Disconnected position. (Refer to detail 'B')



(14) 0.5 IN. KNOCKOUTS,
 (4) 0.5/.75 IN.,
 (1) 1.0/1.25 IN.,
 COMBINATION KNOCKOUTS

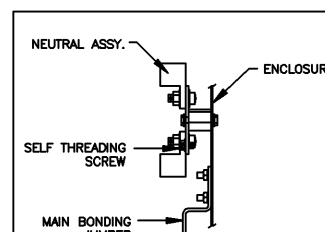
(2) 0.5/.75 IN.,
 (1) 1.0/1.25 IN.,
 (2) 1.5/2.0/2.5 IN.,
 COMBINATION KNOCKOUTS

(1) 1.0/1.25 IN.,
 (1) 1.5/2.0/2.5 IN.,
 COMBINATION KNOCKOUTS

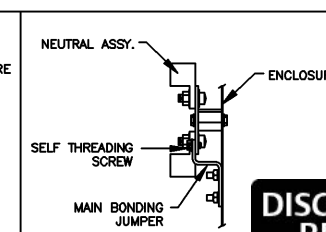


FRONT WITH DOOR & COVER INSTALLED

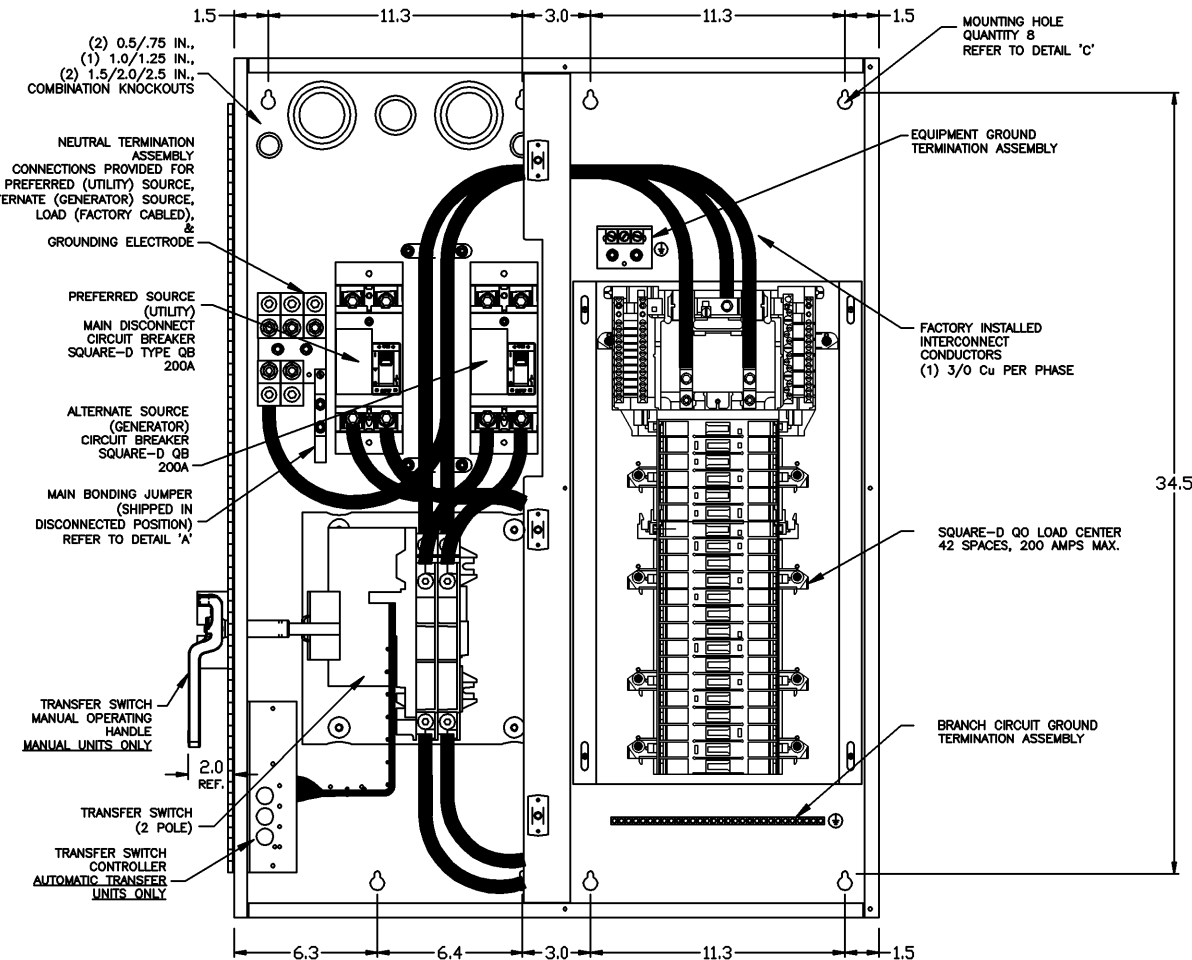
(35) 0.5 IN. KNOCKOUTS,
 (10) 0.5/.75 IN.,
 (1) 1.0/1.25 IN.,
 COMBINATION KNOCKOUTS



DETAIL 'A'
 DISCONNECTED POSITION
 MAIN BONDING JUMPER
 (REFER TO NOTES 8 & 9)



DETAIL 'B'
 CONNECTED POSITION
 MAIN BONDING JUMPER
 (REFER TO NOTES 8 & 9)



FRONT WITH DOOR & COVER REMOVED

DISCONTINUED PRODUCT

B	224029	DAJ	JPB	8/25/09
	SEE ECH			
A	224133	JPB	JPB	08/21/09
	SEE ECH			
	222809	JPB	JPB	05/04/09
	ISSUE			

PROJECT NAME:		185L PTL	
OUTLINE		185L PTL	
185 SERIES, D185L420200F40C			
1PH/3W, 200A, 240/120V			
BY	DATE	MANUFACTURING TOLERANCES TO BE IN ACCORDANCE WITH ASCO PROCEDURE MP-1-003. FOR PLASTIC PARTS SEE MP-1-005	ASSEMB. REF. NO.
DAWN BY	JPB 05/04/09		
CHECKED		PROPERTY OF ASCO POWER TECHNOLOGIES. USE PERMITTED FOR OUR WORK ONLY. ALL RIGHTS OF DESIGN OR INVENTION ARE RESERVED.	SCALE
PROJECT APPROVAL			4:1 SIZE DS
FINAL APPROVAL	JPB 05/04/09	ASCO POWER TECHNOLOGIES, LP. FLORHAM PARK, NEW JERSEY 07932 U.S.A.	805312-001
			DRAWING B ECH NO. 224029 SHEET 1 OF 1