

## Installation Instructions

### 1.0 Product Range

**TPWL1** 6 W LED Exterior Wall Light, Single Sided, 240 V a.c., 4000 K, IP54

### 2.0 Installation Requirements

#### **⚠ ⚠ DANGER**

##### **RISK OF ELECTRIC SHOCK**

It is illegal for persons other than an appropriately licensed electrician or other persons authorised by legislation to work on the fixed wiring of any electrical installation.

- To comply with all safety standards, the product must be used only for the purpose described in this instruction and must be installed in accordance with the wiring rules and regulation in the location where it is installed.
- Hazardous voltage may be present at the wire leads of this product.
- Lock out and tag the input circuit before accessing the wiring connections.

**Failure to follow these instructions will result in death or serious injury.**

- The product is class 1.
- Check whether the product has been damaged during transport. Do not operate/install any product which appears damaged in any way. Return the complete product to the place of purchase for inspection, repair or replacement.
- Take care not to pull any electrical wires during unpacking as this may damage the connections.
- Isolate the electrical supply before commencing any work on this equipment.
- Select a suitable location for installation. This product is rated for ingress protection to IP54.
- There are no user serviceable parts inside the product.

#### **⚠ CAUTION**

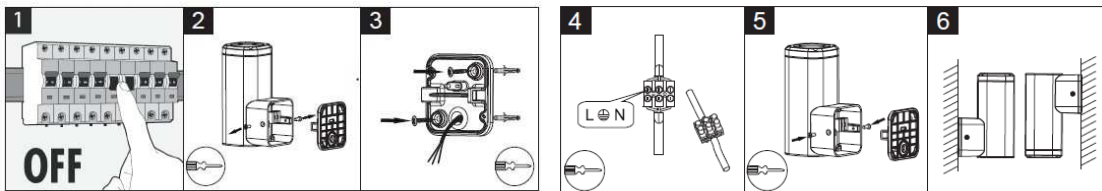
##### **RISK OF BURN INJURIES**

During and after use, the product may be hot. Do not touch the product before it has completely cooled down.

**Failure to follow these instructions can result in minor injuries, or equipment damage.**

### 3.0 Installation Instructions

- Remove all packaging material from the product
- Turn off power to related lighting circuit
- Mark hole centres for fixing mounting base
- Secure mounting base using appropriate fasteners
- Safely terminate wiring, paying particular attention to all markings
- Fit product to mounting base



### 4.0 Dimming

This product is not dimmable.

## 5.0 Product Specifications

Cat #	TPWL1
Voltage Rating	240 V a.c., 50 Hz
IP Rating	IP54
Total Power Consumption (W)	5.9
Beam Angle (°)	30
Lumen Output (Lumens)	> 330
Operating Temperature (° C)	-10 to +40
Operating Humidity (% RH) non-condensing	+10 to +95
CRI	> 70
Colour Temperature	4000 K
Dimensions L x H x W (mm)	157 x 106 x 70
Lifespan $L_{70}$ (Hours)	36,000

## 6.0 Warranty

Schneider Electric (Australia) Pty Ltd, (Clipsal by Schneider Electric), warrants this product to be free from defects in materials and workmanship for a period of three years from the date of installation. The benefits conferred herein are in addition to any other rights and remedies you may have at law in respect to this product. Australian and New Zealand customers please see the notes below.

**Australia:** Australian Consumer Law specifies that our goods come with guarantees that cannot be excluded. You are entitled to a replacement or refund for a major failure and compensation for any other reasonably foreseeable loss or damage. You are also entitled to have the goods repaired or replaced if the goods fail to be of acceptable quality and the failure does not amount to a major failure.

**New Zealand:** This guarantee is in addition to and does not affect your rights under applicable law, except where that law expressly provides otherwise. The Consumer Guarantee Act 1993 (NZ) will not apply if this product is purchased for the purpose of business.

This warranty is expressly subject to the Schneider Electric product being installed, wired, tested, operated and used in accordance with our instructions and specifications. Any alterations or modifications made to the product without our permission will void the warranty. Schneider Electric will at its option repair, replace or refund any defective product. The cost of replacement or repair of a defective product is limited to the price of the product only. Schneider Electric will not be responsible for the cost of retrieving, removing, reinstalling, transporting (including return of the defective product to us) or re-testing a product.

**How to make a claim:** You shall provide Schneider Electric with adequate particulars of the defect within 28 days of the fault occurring. Contact your local Schneider Electric, PDL or Clipsal products' supplier and provide the details of the date of purchase, description of load or connections and the circumstances of the failure. Returned products must be securely packed and labelled for proper processing.



### Australia Schneider Electric (Australia) Pty Ltd

Customer Care Australia:  
1300 369 233  
Email: [customer-care.au@schneider-electric.com](mailto:customer-care.au@schneider-electric.com)  
[www.schneider-electric.com.au](http://www.schneider-electric.com.au)

### Technical and Sales Support

For assistance and technical problems, contact your nearest Schneider Electric Sales representative.

### New Zealand Schneider Electric (NZ) Ltd

38 Business Parade South, Highbrook, East Tamaki, Manukau 2013  
P.O. Box 259370 Botany, Manukau 2163  
Telephone +64 9-829 0490, Fax +64 9-829 0491  
After hours service hotline:  
0800 735 4357 (New Zealand only)  
Customer Care: 0800 652 999  
Email: [sales@nz.schneider-electric.com](mailto:sales@nz.schneider-electric.com)  
[www.schneider-electric.com](http://www.schneider-electric.com)

Schneider Electric reserves the right to change specifications, modify designs and discontinue items without incurring obligation and whilst every effort is made to ensure that descriptions, specifications and other information in this catalogue are correct, no warranty is given in respect thereof and the company shall not be liable for any error therein.

© Schneider Electric 2016

This material is copyright under Australian and international laws. Except as permitted under the relevant law, no part of this work may be reproduced by any process without the prior written permission of and acknowledgment of Schneider Electric

