

LED Downlight

TPDL1C1 Series

TECHNICAL DATASHEET

Simple Fusion Technology

Integral driver, Tri-Temperature selection and Twist lock changeable trim combine cutting edge technology into a simple and easy to install LED Downlight.

Application

The TPDL1C1 LED Downlight is suitable for multiple illumination applications from residential to commercial buildings. The slightly recessed frosted diffuser ensures reduced glare and soft glow output. The integrated colour temperature selector switch enables the choice of 3000K, 4000K and 6000K outputs to ensure the perfect illumination for a wide variety of installations.

Features / Benefits

- Low profile Integral Driver
- Tri-Temperature colour switch provides multiple colour outputs to be selected on installation (Default 3000K)
- Twist lock trim allows for the Brushed Chrome option
- IC-4 rating allows the fitting to be abutted and covered by building material
- Dimmable with Clipsal LED dimming technology products
- Superior finish metal trim

Ordering Matrix

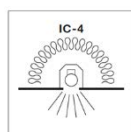
Catalogue Number	Description
TPDL1C1	LED Downlight, >700 lm, 3000K / 4000K / 6000K, IP44, White Trim
TPDL1C1B10	LED Downlight, >700 lm, 3000K / 4000K / 6000K, IP44, White Trim (10 Pack)
TPDL1TBC	LED Downlight Trim, Twist-Lock, Brushed Chrome



Perfect for illumination in multiple installations



AS/NZS60598.2.2
AS/NZS61347.1
AS/NZS61347.2.13
CISPR15



With Clipsal LED
Dimmer Products



Schneider Electric (Australia) Pty Ltd
78 Waterloo Road, Macquarie Park, NSW, 2113
National Customer Care: 1300 2025 25
Fax: 1300 369 288
www.clipsal.com

Life Is On

CLIPSAL
by Schneider Electric

LED Downlight

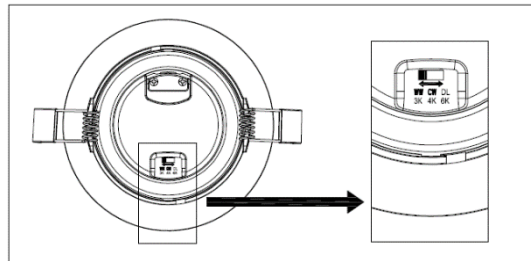
TPDL1C1 Series

TECHNICAL DATASHEET

Specifications

Catalogue Number	TPDL1C1		
Voltage rating	240 Vac, 50 Hz		
Total System Power	9 W		
Dimmable	Yes		
Colour Temperature	3000 K	4000 K	6000 K
Lumens	>700	>730	>750
CRI	> 80		
IP Rating	IP44 (from front)		
Beam Angle	90 degrees		
Lifespan (L70)	30,000 hrs		
Power Factor	0.9		
Operating Temperature	- 10°C to +45°C		
Operating Humidity	+10% to +95% Non Condensing		

Colour Temperature Selectable



3000K	4000K	6000K
Warm White	Cool White	Day Light

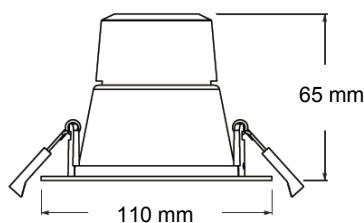
* Default 3000K



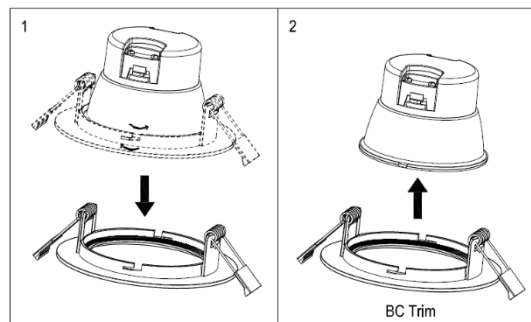
The integrated Tri-Temp colour selection switch allows for 3 different light temperatures during installation.

Construction

Catalogue Number	TPDL1C1
Mounting Depth	65 mm
Trim Width	110 mm
Cut-out	90 mm
Weight	0.227 kg

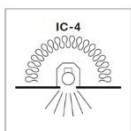


Trim Changeable



(1) Rotate the trim to release the locking mechanism.

(2) This allows the installer to replace the White trim with a Brushed Chrome one (sold separately TPDL1TBC)



IC-4 Rated

This unit has an IC-4 Abutted & Covered rating. A recessed product that has this rating can be abutted to building material and covered by insulation



Dependable Dimming

Designed and tested to work with Clipsal LED Dimmers to ensure smooth dimming performance and true compatibility