

NOTES:

1. INSTALLATION SHALL COMPLY WITH ALL APPLICABLE NATIONAL AND LOCAL CODES.
2. SEE PRODUCT DOCUMENTATION FOR FURTHER INFORMATION.
3. FOR ADDITIONAL DETAILS REFER TO DRAWINGS FOR INDIVIDUAL COMPONENTS.

THIS DRAWING AND SPECIFICATIONS HEREIN ARE THE PROPERTY OF SCHNEIDER ELECTRIC AND SHALL NOT BE COPIED, REPRODUCED OR USED IN WHOLE OR IN PART, AS THE BASIS FOR THE MANUFACTURE OR SALE OF ITEMS WITHOUT WRITTEN PERMISSION FROM SCHNEIDER ELECTRIC. THIS DRAWING IS BASED UPON LATEST AVAILABLE INFORMATION AND IS SUBJECT TO CHANGE WITHOUT NOTICE.



TITLE: Smart-UPS Online (SRT) w/ TRANSFORMER
 SRT8KRMXLT-5KTF + SRT192RMBP - RACKMOUNT
 INPUT: 208VAC, (L1+L2+G), HARDWIRE
 UPS OUTPUT: 208VAC, (L1+L2+G), (4) NEMA L6-20R,
 (2) NEMA L6-30R, HARDWIRE
 TRANSFORMER OUTPUT: 120VAC, (12) 5-20R
 ISOMETRIC VIEWS

PROJECT: STD SUBMITTAL DRAWING SHEET 1 OF 4

DWG NO: SRT8KRMXLT-5KTF

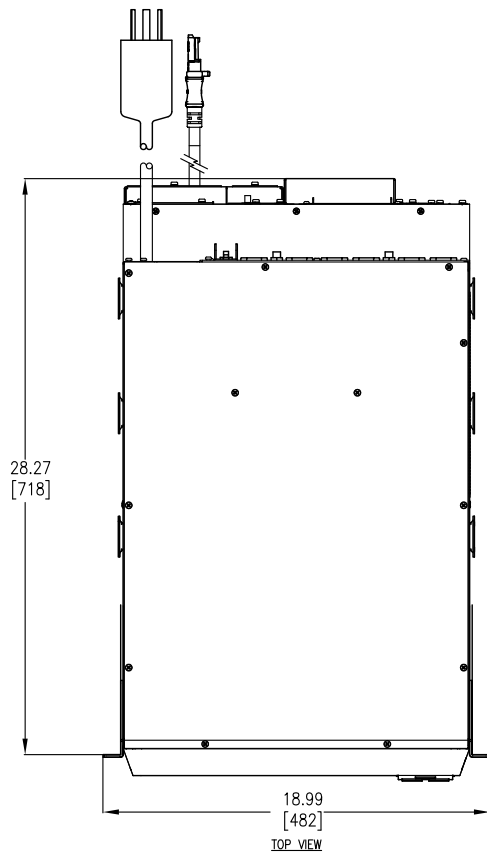
REV 0

DRAWN BY: S CUNHA 16JUN2015

ENGINEER: E KOTLYAR 16JUN2015

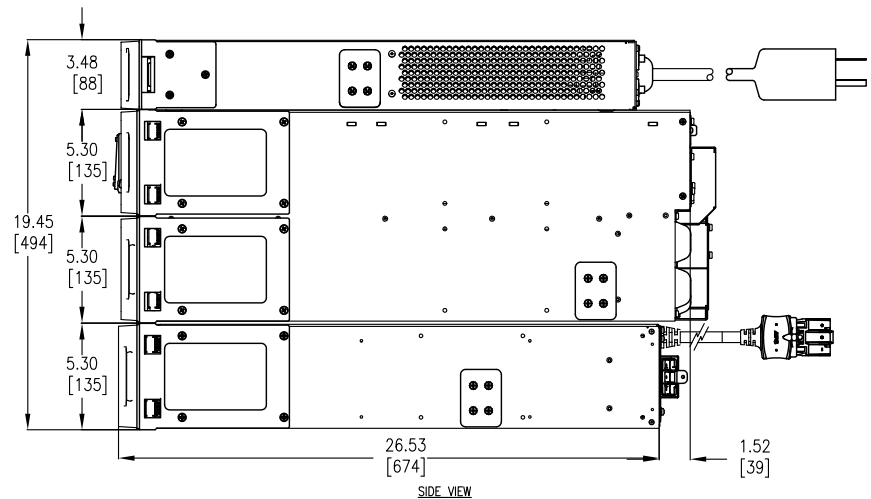
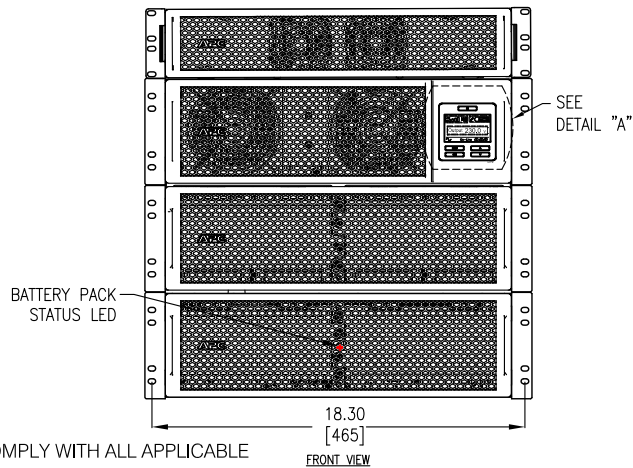
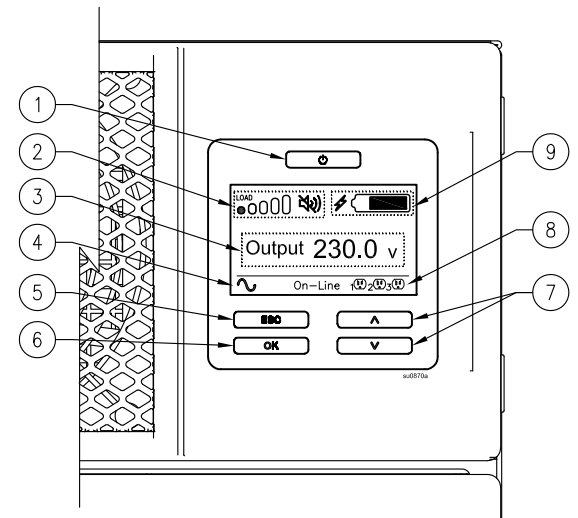
APPROVED BY: K WHITE/J PRECOPIO 16JUN2015

THIRD
 ANGLE
 PROJ



DISPLAY INTERFACE:

1. POWER "ON/OFF" BUTTON.
2. LOAD ICON, DISABLE/MUTE AUDIBLE ALARM ICON.
3. UPS STATUS INFORMATION.
4. OPERATION MODE ICONS.
5. "ESCAPE" BUTTON.
6. "OK" BUTTON.
7. "UP/DOWN" BUTTONS.
8. CONTROLLABLE OUTLET GROUP STATUS ICONS.
9. BATTERY STATUS ICONS.



NOTES:

1. INSTALLATION SHALL COMPLY WITH ALL APPLICABLE NATIONAL, STATE AND LOCAL CODES.
2. PLEASE REFER TO PRODUCT DOCUMENTATION FOR FURTHER INFORMATION.
3. UNLESS OTHERWISE SPECIFIED, ALL DIMENSIONS ARE IN INCHES [MILLIMETERS].
4. WEIGHT OF UNIT IS 566.20 LBS [257.42 KG].
5. CABLE ENTRY FROM REAR SIDE OF UNIT.

THIS DRAWING AND SPECIFICATIONS HEREIN ARE THE PROPERTY OF SCHNEIDER ELECTRIC AND SHALL NOT BE COPIED, REPRODUCED OR USED IN WHOLE OR IN PART, AS THE BASIS FOR THE MANUFACTURE OR SALE OF ITEMS WITHOUT WRITTEN PERMISSION FROM SCHNEIDER ELECTRIC. THIS DRAWING IS BASED UPON LATEST AVAILABLE INFORMATION AND IS SUBJECT TO CHANGE WITHOUT NOTICE.



TITLE: Smart-UPS Online (SRT) w/ TRANSFORMER
SRT8KRMXLT-SKTF + SRT192RMBP - RACKMOUNT
INPUT: 208VAC, (L1+L2+G), HARDWIRE
UPS OUTPUT: 208VAC, (L1+L2+G), (4) NEMA L6-20R,
(2) NEMA L6-30R, HARDWIRE
TRANSFORMER OUTPUT: 120VAC, (12) 5-20R
MAIN MECHANICAL

PROJECT: STD SUBMITTAL DRAWING SHEET 2 OF 4

DWG NO: SRT8KRMXLT-5KTF

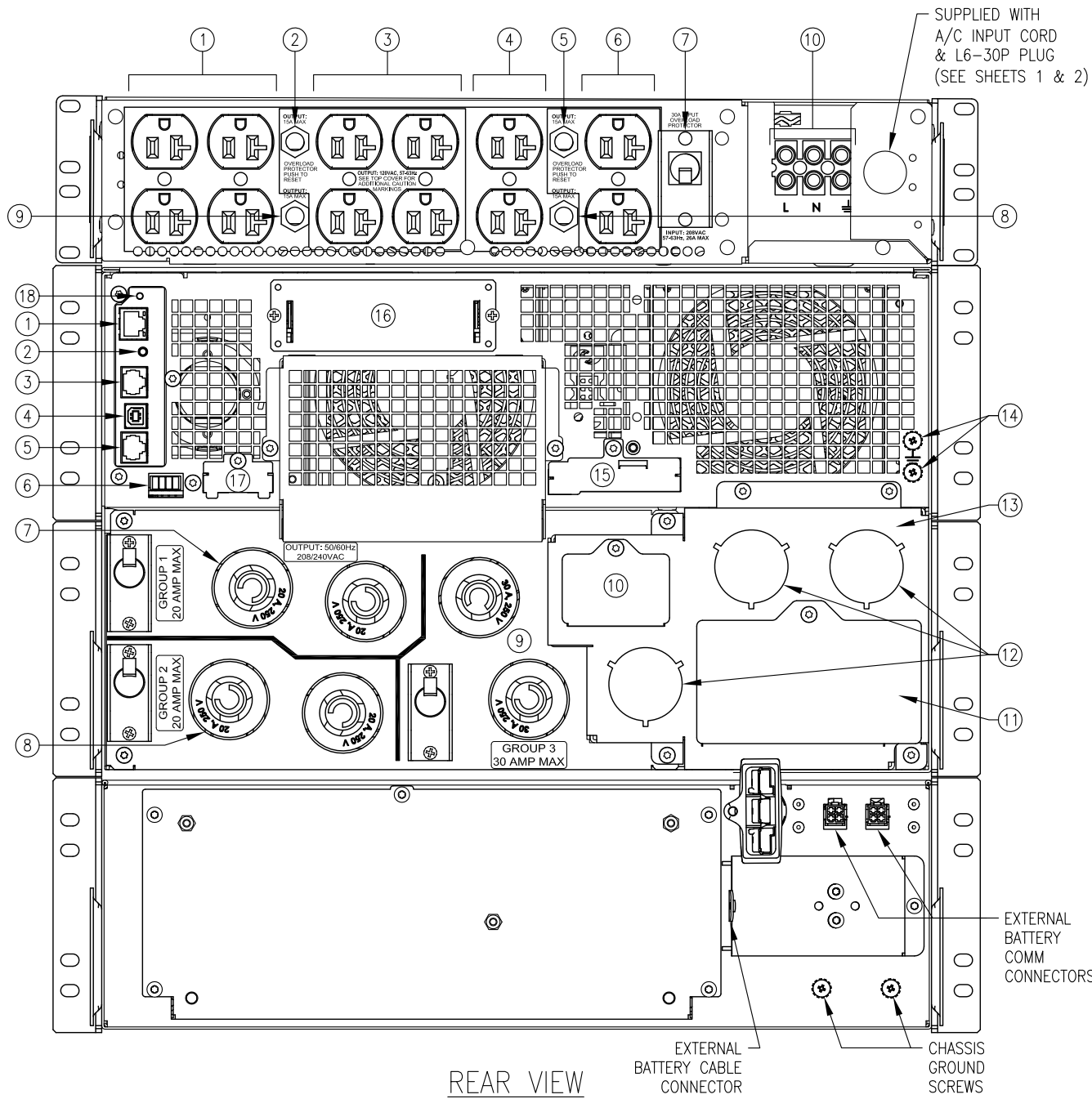
REV 0

DRAWN BY: S CUNHA 16JUN2015

ENGINEER: E KOTLYAR 16JUN2015

APPROVED BY: K WHITE/J PRECOPIO 16JUN2015

THIRD ANGLE PROJ



REAR VIEW

SRT5KRMTF: (NUMBERING PER USER MANUAL)

1. 15A MAXIMUM OUTPUT
2. OVERLOAD PROTECTOR
3. 15A MAXIMUM OUTPUT
4. 15A MAXIMUM OUTPUT
5. OVERLOAD PROTECTOR
6. 15A MAXIMUM OUTPUT
7. INPUT OVERLOAD PROTECTOR
8. OVERLOAD PROTECTOR
9. OVERLOAD PROTECTOR
10. INPUT POWER CORD CONNECTION

SRT8KRMXLT: (NUMBERING PER OPERATIONS MANUAL)

1. NETWORK PORT
2. CONSOLE PORT
3. UNIVERSAL I/O PORT
4. USB PORT
5. SERIAL COM
6. EPO TERMINAL
7. CONTROLLABLE OUTLET GROUP 1
[(2) NEMA L6-20R] WITH CIRCUIT BREAKER
8. CONTROLLABLE OUTLET GROUP 2
[(2) NEMA L6-20R] WITH CIRCUIT BREAKER
9. CONTROLLABLE OUTLET GROUP 3
[(2) NEMA L6-30R] WITH CIRCUIT BREAKER
10. AC OUTPUT INSPECTION PANEL
11. AC INPUT INSPECTION PANEL
12. AC HARDWIRE KNOCKOUTS
13. HARDWIRE BOX INPUT/OUTPUT
14. CHASSIS GROUND SCREWS
15. EXTERNAL BATTERY POWER AND COMMUNICATION CONNECTORS
16. SMART SLOT
17. PRL COMM PORT
18. RESET BUTTON

NOTES:

1. INSTALLATION SHALL COMPLY WITH ALL APPLICABLE NATIONAL, STATE AND LOCAL CODES.
2. PLEASE REFER TO PRODUCT DOCUMENTATION FOR FURTHER INFORMATION.

THIS DRAWING AND SPECIFICATIONS HEREIN ARE THE PROPERTY OF SCHNEIDER ELECTRIC AND SHALL NOT BE COPIED, REPRODUCED OR USED IN WHOLE OR IN PART, AS THE BASIS FOR THE MANUFACTURE OR SALE OF ITEMS WITHOUT WRITTEN PERMISSION FROM SCHNEIDER ELECTRIC. THIS DRAWING IS BASED UPON LATEST AVAILABLE INFORMATION AND IS SUBJECT TO CHANGE WITHOUT NOTICE.



TITLE: Smart-UPS Online (SRT) w/ TRANSFORMER
SRT8KRMXLT-5KTF + SRT192RMBP - RACKMOUNT
INPUT: 208VAC, (L1+L2+G), HARDWIRE
UPS OUTPUT: 208VAC, (L1+L2+G), (4) NEMA L6-20R,
(2) NEMA L6-30R, HARDWIRE
TRANSFORMER OUTPUT: 120VAC, (12) 5-20R
REAR VIEW

PROJECT: STD SUBMITTAL DRAWING SHEET 3 OF 4

DWG NO: SRT8KRMXLT-5KTF

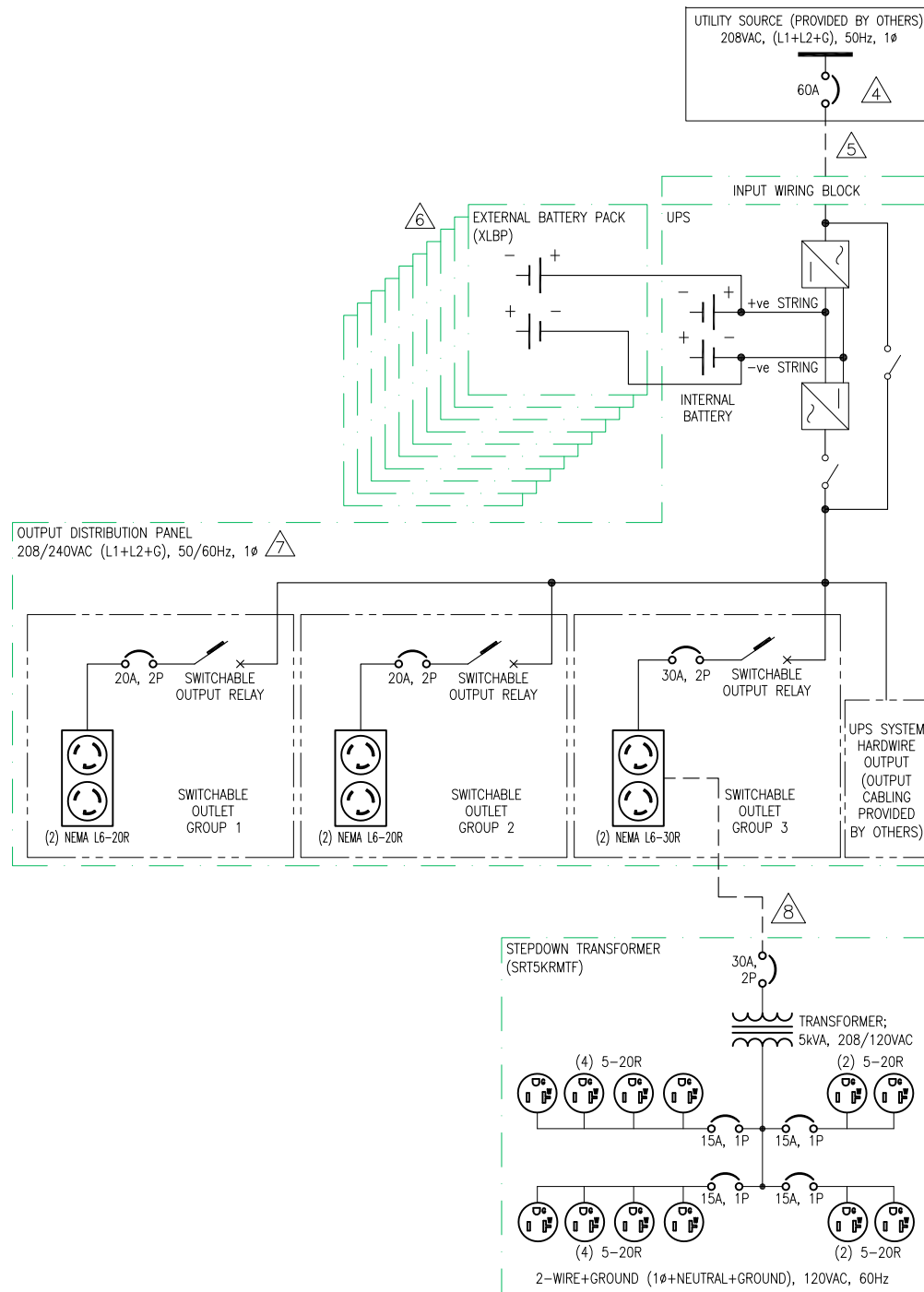
REV 0

DRAWN BY: S CUNHA 16JUN2015

ENGINEER: E KOTLYAR 16JUN2015

APPROVED BY: K WHITE/J PRECOPIO 16JUN2015

THIRD ANGLE PROJ



NOTES:

1. INSTALLATION SHALL COMPLY WITH ALL APPLICABLE NATIONAL, STATE AND LOCAL CODES.
2. PLEASE REFER TO PRODUCT DOCUMENTATION FOR FURTHER INFORMATION.
3. STD SUBMITTAL DRAWING DEPICTS POWER SYSTEM CONNECTIONS AND IS NOT REPRESENTATIVE OF PHYSICAL LAYOUT. PLEASE REFER TO MECHANICAL STD SUBMITTAL DRAWINGS FOR MORE SPECIFIC PHYSICAL DATA.
- △ 4. UTILITY SOURCE MUST BE NOMINAL 208VAC, (L1+L2+G), 50Hz, 1Ø, PROVIDED BY OTHERS.
- △ 5. DASHED LINE BETWEEN UTILITY SOURCE AND THE UNIT (-----) REPRESENTS CABLING PROVIDED BY OTHERS.
- △ 6. ADDITIONAL EXTERNAL BATTERY PACKS (UP TO 10), CAN BE CONNECTED TO INCREASE THE RUN TIME FURTHER.
- △ 7. OUTPUT DISTRIBUTION PANEL CONTAINS SWITCHABLE OUTPUT GROUPS. REFER TO INSTALLATION MANUAL FOR DETAILED INSTRUCTIONS.
- △ 8. DASHED LINE BETWEEN UPS AND STEP-DOWN TRANSFORMER (----) REPRESENTS POWER CORD (WITH L6-30P, TWIST-LOCK), PROVIDED BY Schneider Electric.

THIS DRAWING AND SPECIFICATIONS HEREIN ARE THE PROPERTY OF SCHNEIDER ELECTRIC AND SHALL NOT BE COPIED, REPRODUCED OR USED IN WHOLE OR IN PART, AS THE BASIS FOR THE MANUFACTURE OR SALE OF ITEMS WITHOUT WRITTEN PERMISSION FROM SCHNEIDER ELECTRIC. THIS DRAWING IS BASED UPON LATEST AVAILABLE INFORMATION AND IS SUBJECT TO CHANGE WITHOUT NOTICE.



TITLE: Smart-UPS Online (SRT) w/ TRANSFORMER
SRT8KRMXLT-5KTF + SRT192RMBP - RACKMOUNT
INPUT: 208VAC, (L1+L2+G), HARDWARE
UPS OUTPUT: 208VAC, (L1+L2+G), (4) NEMA L6-20R,
(2) NEMA L6-30R, HARDWARE
TRANSFORMER OUTPUT: 120VAC, (1) 5-20R
SYSTEM SINGLE-LINE DIAGRAM

PROJECT: STD SUBMITTAL DRAWING **SHEET** 4 OF 4

DWG NO: SRT8KRMXLT-5KTF **REV** 0

DRAWN BY: S CUNHA	16JUN2015	PROJ ANGLE
ENGINEER: V CHENNAKESAVAN	16JUN2015	N/A
APPROVED BY: K WHITE/J PRECOPIO	16JUN2015	