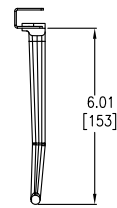
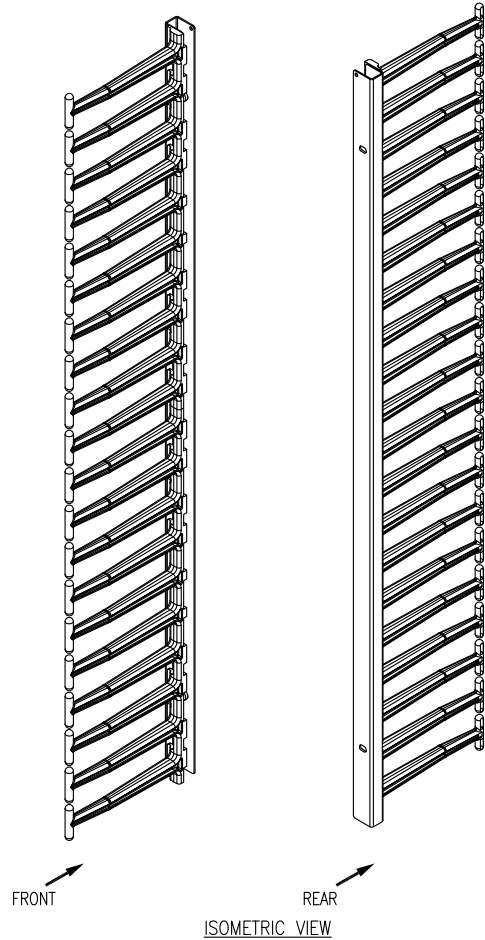


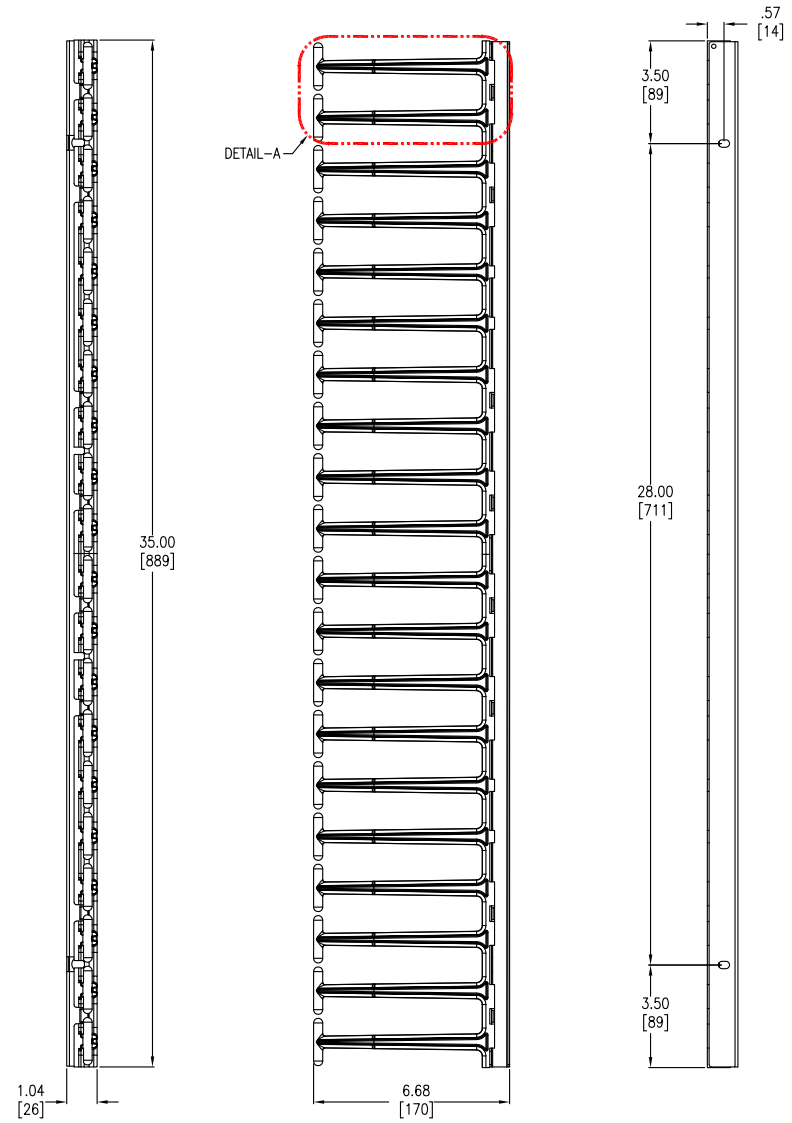
ENLARGED RIGHT SIDE VIEW
DETAIL-A



TOP VIEW



ISOMETRIC VIEW



FRONT VIEW

RIGHT SIDE VIEW

REAR VIEW

NOTES:

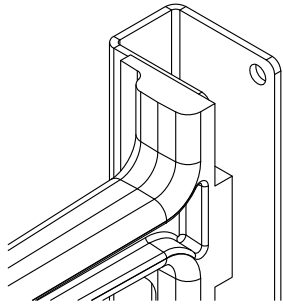
1. INSTALLATION SHALL COMPLY WITH ALL APPLICABLE NATIONAL, STATE AND LOCAL CODES.
2. PLEASE REFER TO PRODUCT DOCUMENTATION FOR FURTHER INFORMATION.
3. ALL DIMENSIONS ARE IN INCHES [MILLIMETERS].
4. WEIGHT OF UNIT IS 10.20 LBS [4.64 KG].

THIS DRAWING AND SPECIFICATIONS HEREIN ARE THE PROPERTY OF SCHNEIDER ELECTRIC AND SHALL NOT BE COPIED, REPRODUCED OR USED IN WHOLE OR IN PART, AS THE BASIS FOR THE MANUFACTURE OR SALE OF ITEMS WITHOUT WRITTEN PERMISSION FROM SCHNEIDER ELECTRIC. THIS DRAWING IS BASED UPON LATEST AVAILABLE INFORMATION AND IS SUBJECT TO CHANGE WITHOUT NOTICE.

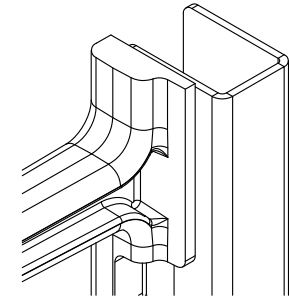
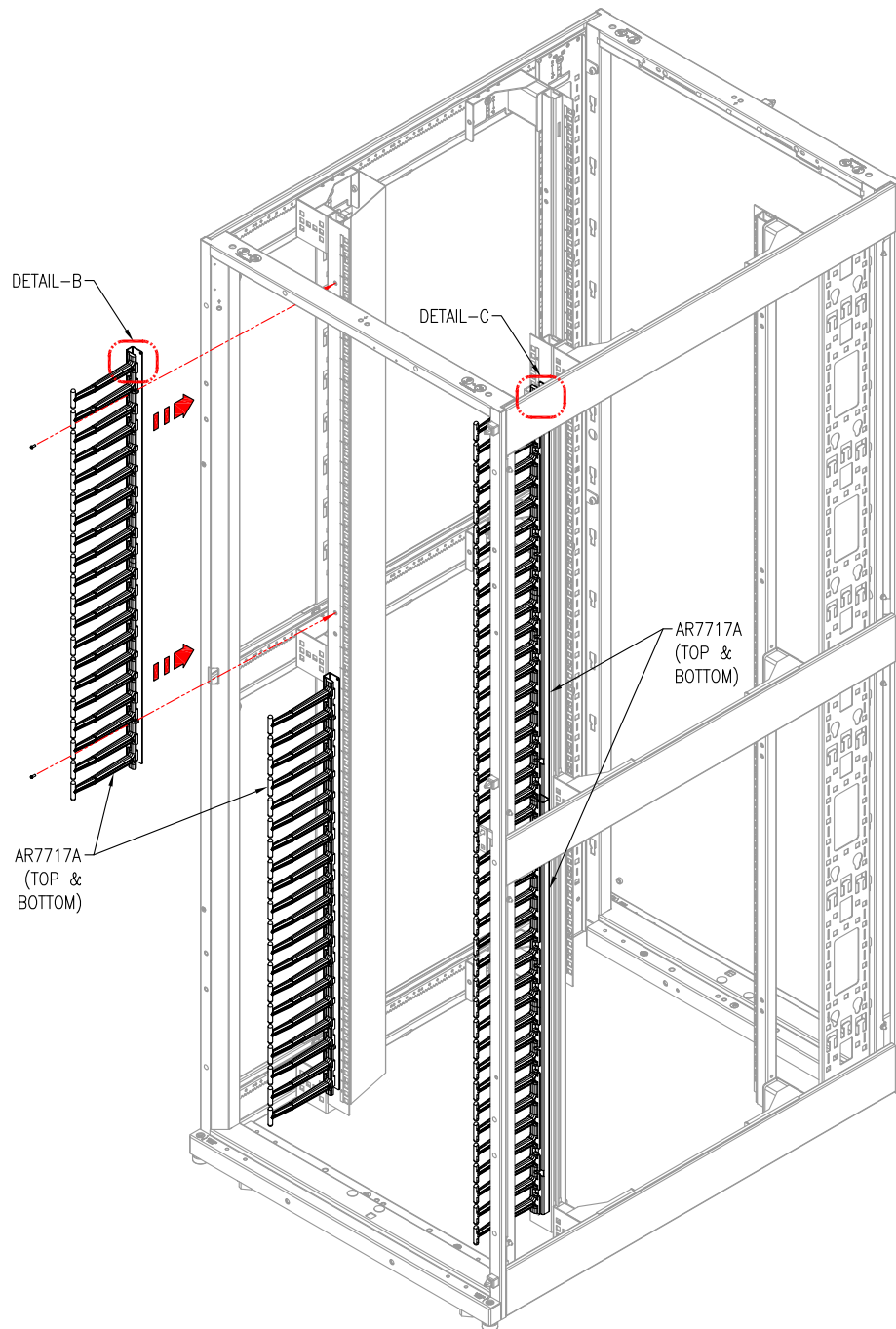


TITLE: VERTICAL CABLE MANAGER
FOR NETSHELTER SX
NETWORKING ENCLOSURES (AR3x4x) (QTY. 4)
MAIN MECHANICAL
PROJECT: STD SUBMITTAL DRAWINGS SHEET 1 OF 2

DWG NO:	AR7717A	REV:	0
DRAWN BY:	S CUNHA	28-FEB-13	THIRD
ENGINEER:	P FISCHER/J KUMMER	28-FEB-13	ANGLE
APPROVED BY:	S VOCCIO	28-FEB-13	PROJ



ENLARGED LEFT-SIDE
MOUNTING DETAIL-B



ENLARGED RIGHT-SIDE
MOUNTING DETAIL-C

NOTES:

1. INSTALLATION SHALL COMPLY WITH ALL APPLICABLE NATIONAL, STATE AND LOCAL CODES.
2. PLEASE REFER TO PRODUCT DOCUMENTATION FOR FURTHER INFORMATION.
3. REFER TO ENCLOSURE USER MANUAL FOR RAIL ADJUSTMENT TO ACCOMMODATE MOUNTING OF THE VERTICAL CABLE MANAGER.

AR3140 NETSHELTER SHOWN

THIS DRAWING AND SPECIFICATIONS HEREIN ARE THE PROPERTY OF SCHNEIDER ELECTRIC AND SHALL NOT BE COPIED, REPRODUCED OR USED IN WHOLE OR IN PART, AS THE BASIS FOR THE MANUFACTURE OR SALE OF ITEMS WITHOUT WRITTEN PERMISSION FROM SCHNEIDER ELECTRIC. THIS DRAWING IS BASED UPON LATEST AVAILABLE INFORMATION AND IS SUBJECT TO CHANGE WITHOUT NOTICE.



TITLE:
VERTICAL CABLE MANAGER
FOR NETSHELTER SX
NETWORKING ENCLOSURES (AR3x4x) (QTY. 4)
MOUNTING DETAIL

PROJECT: STD SUBMITTAL DRAWINGS SHEET 2 OF 2

DWG NO: AR7717A

DRAWN BY:	S CUNHA	28-FEB-13
ENGINEER:	P FISCHER/J KUMMER	28-FEB-13
APPROVED BY:	S VOCCIO	28-FEB-13

REV. 0
THIRD
ANGLE
PROJ