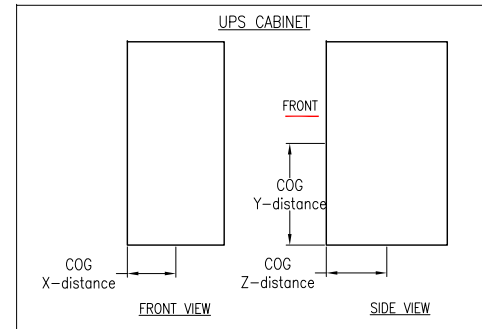



NOTES:

1. INSTALLATION SHALL COMPLY WITH ALL APPLICABLE NATIONAL, STATE AND LOCAL CODES.
2. REFER TO PRODUCT DOCUMENTATION FOR ADDITIONAL DETAILS PRIOR TO INSTALLATION AND SITE PREPARATION WORK.
3. ALL DIMENSIONS ARE IN MILLIMETERS.
4. CLEARANCE DIMENSIONS ARE RECOMMENDED FOR AIRFLOW AND SERVICE ACCESS ONLY.
5. ALL DIMENSIONS EXCLUDES SCREW PROJECTIONS OUTSIDE THE ENCLOSURE.
6. CABLE ENTRY IS FROM BOTTOM/REAR OF THE UNIT.

FOR ADJACENT BATTERY CABINET CABLE ENTRY IS FROM LEFT. (BATTERY CABINET SHOULD BE MOUNTED LEFT SIDE TO UPS).
FOR ADJACENT MAINTENANCE BYPASS IT IS FROM THE RIGHT OF UNIT. (MBP SHOULD BE MOUNTED RIGHT SIDE TO UPS).

7. OPERATING TEMPERATURE: 0°C TO 40°C [32°F TO 104°F].
8. PROTECTION CLASS: IP21. OPTIONAL PROTECTION CLASS IP22 (SKU#GVSOPT026), REFER TO SHEET-2.
9. COLOR: RAL 9003, GLOSS LEVEL 85%.
10. DOOR IS BOTTOM HINGED WITH HOOKS. CAN BE COMPLETELY REMOVABLE.
11. THIS INFORMATION PROVIDES APPROXIMATE CENTER OF GRAVITY CALCULATION.
12. DRILL/PUNCH HOLES IN PLATE. REMOVE PLATE FROM CABINET BEFORE DRILLING/PUNCHING.



<div> CENTER OF GRAVITY AND WEIGHT DATA</div>					
SKU NUMBER	UPS RATING (kW)	WEIGHT OF UNIT—(kg)	CENTER OF GRAVITY DISTANCE (Millimeters)		
			"X"	"Y"	"Z"
GVSUPS20KHS / GVSUPS20KHINS	20	206	260	880	410
GVSUPS30KHS / GVSUPS30KHINS	30				
GVSUPS40KHS / GVSUPS40KHINS	40				
GVSUPS50KHS /GVSUPS50KHINS	50				
GVSUPS60KHS / GVSUPS60KHINS	60	238			
GVSUPS80KHS / GVSUPS80KHINS	80	250			
GVSUPS100KHS /GVSUPS100KHINS	100				

THIS DRAWING AND SPECIFICATIONS HEREIN ARE THE PROPERTY OF SCHNEIDER ELECTRIC AND SHALL NOT BE COPIED, REPRODUCED OR USED IN WHOLE OR IN PART, AS THE BASIS FOR THE MANUFACTURE OR SALE OF ITEMS WITHOUT WRITTEN PERMISSION FROM SCHNEIDER ELECTRIC. THIS DRAWING IS BASED UPON LATEST AVAILABLE INFORMATION AND IS SUBJECT TO CHANGE WITHOUT NOTICE.

Schneider Electric

TITLE: GALAXY VS
UPS 20-100kW
INPUT: 400V, 3PH, 60Hz
OUTPUT: 400V, 3PH OR 3PH+N, 50-60Hz
GENERAL ARRANGEMENT

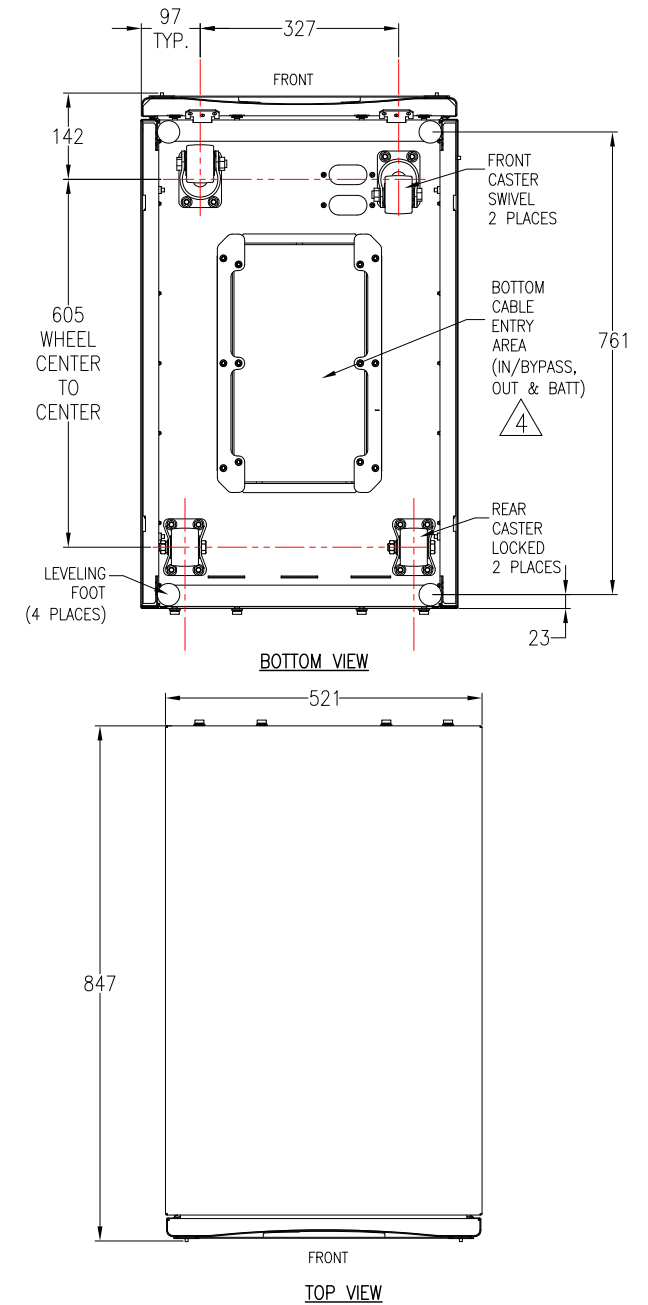
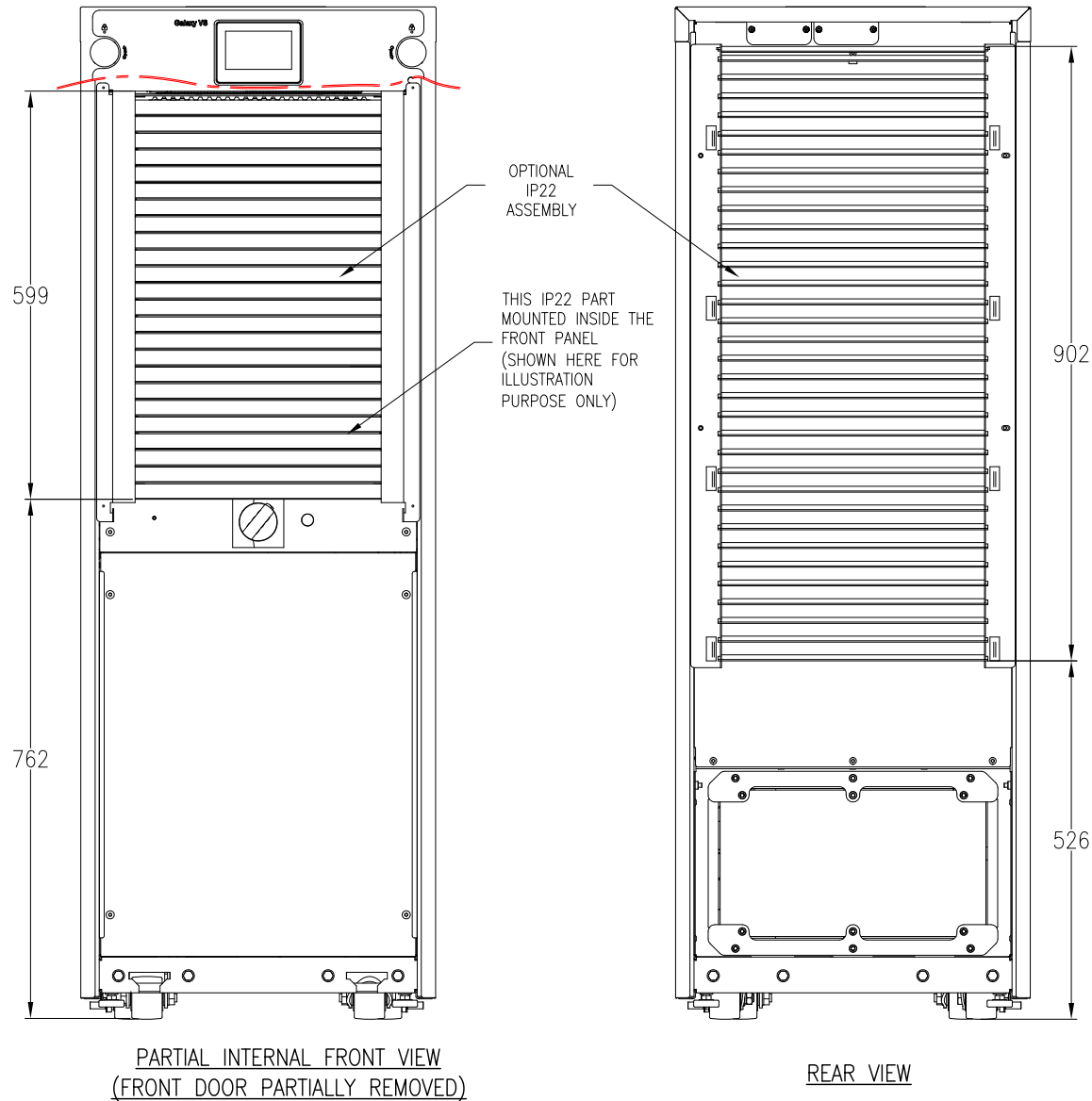
DWG NO: GVSUPS20K100HS
DRAWN: K.NAGENDRA/BALA
ENGINEER: H. NICOLAISEN/P. BONDE

REV: 2
9-OCT-20
9-OCT-20
9-OCT-20
FIRST ANGLE PROJECTION

PROJECT: SUBMITTAL DRAWINGS SHEET 1 OF 5

APPROVED: HENRIK NICOLAISEN

VIEWS WITH OPTIONAL IP22 (SKU# GVSOPT026)



NOTES:

1. INSTALLATION SHALL COMPLY WITH ALL APPLICABLE NATIONAL, STATE AND LOCAL CODES.
2. REFER TO PRODUCT DOCUMENTATION FOR ADDITIONAL DETAILS PRIOR TO INSTALLATION AND SITE PREPARATION WORK.
3. ALL DIMENSIONS ARE IN MILLIMETERS.
- △ 4. DRILL/PUNCH HOLES IN PLATE. REMOVE PLATE FROM CABINET BEFORE DRILLING/PUNCHING.
5. SOME STRUCTURAL DETAILS HAVE BEEN OMITTED FOR THE PURPOSE OF CLARITY.

THIS DRAWING AND SPECIFICATIONS HEREIN ARE THE PROPERTY OF SCHNEIDER ELECTRIC AND SHALL NOT BE COPIED, REPRODUCED OR USED IN WHOLE OR IN PART, AS THE BASIS FOR THE MANUFACTURE OR SALE OF ITEMS WITHOUT WRITTEN PERMISSION FROM SCHNEIDER ELECTRIC. THIS DRAWING IS BASED UPON LATEST AVAILABLE INFORMATION AND IS SUBJECT TO CHANGE WITHOUT NOTICE.

Schneider Electric

TITLE: GALAXY VS
UPS 20-100kW
INPUT: 400V, 3PH, 60Hz
OUTPUT: 400V, 3PH OR 3PH+N, 50-60Hz
IP22 DETAILS - TOP AND BOTTOM VIEWS

PROJECT: SUBMITTAL DRAWINGS SHEET 2 OF 5

DWG NO: GVSUPS20K100HS

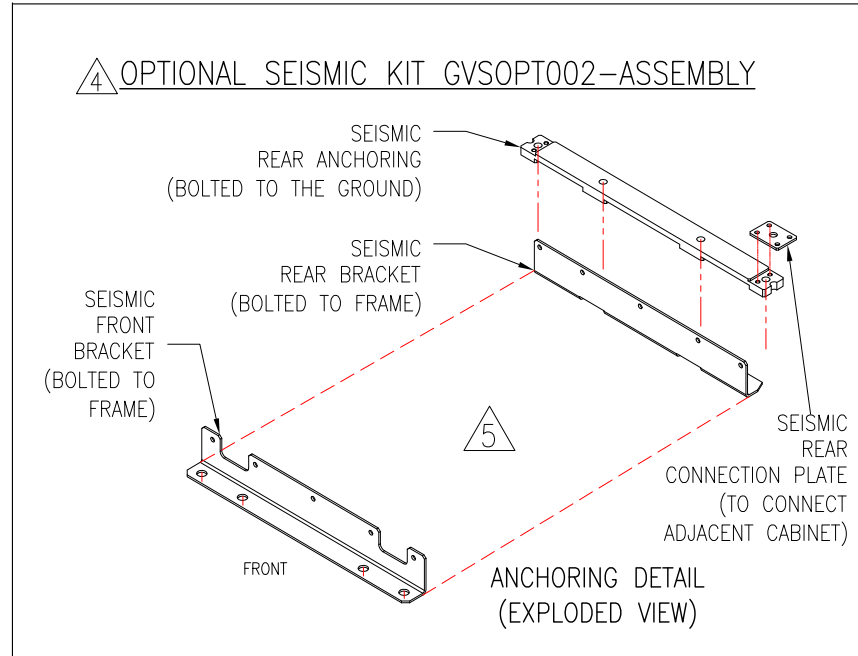
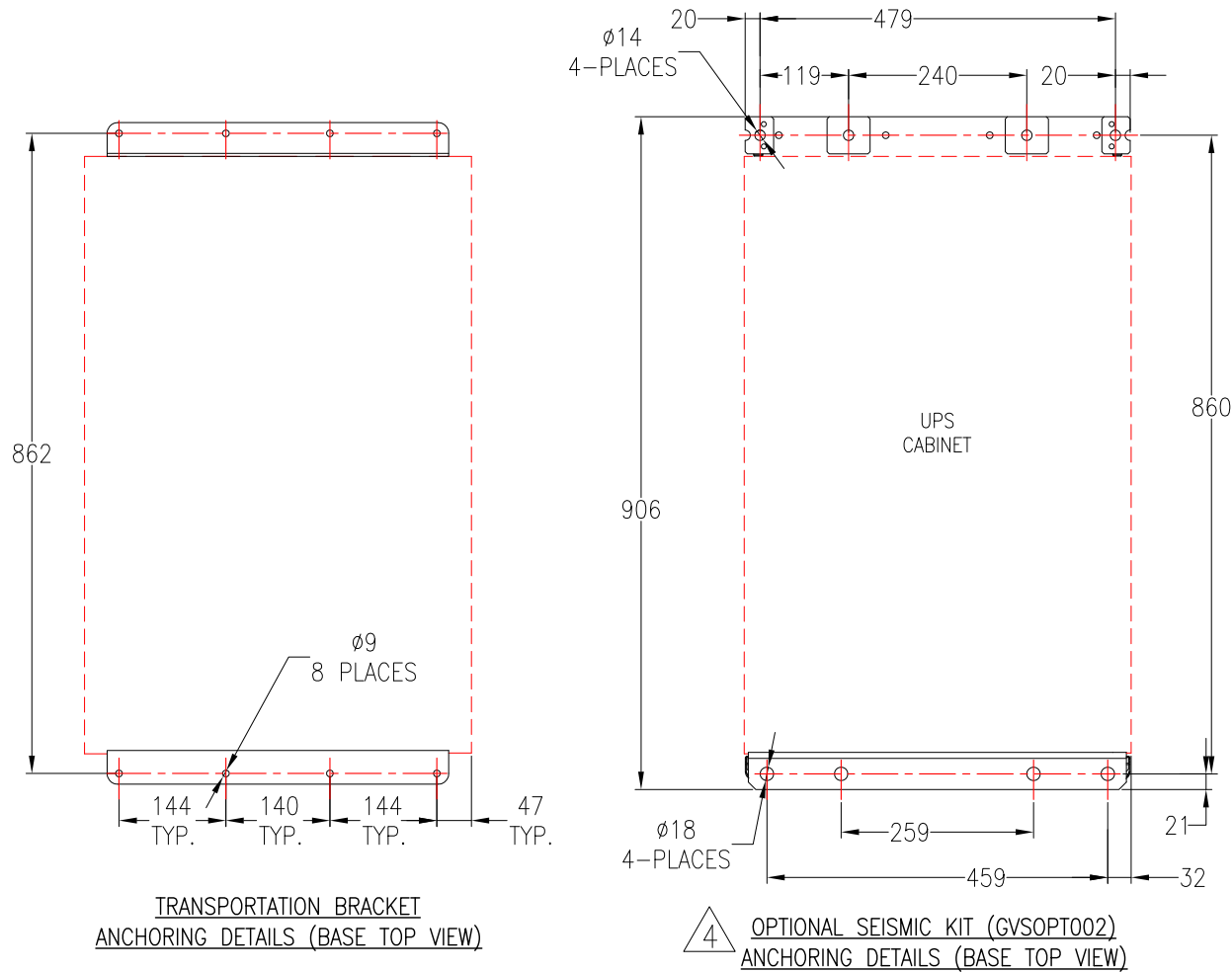
DRAWN: K.NAGENDRA/BALA
ENGINEER: H. NICOLAISEN/P. BONDE

APPROVED: HENRIK NICOLAISEN

REV. 1

9-OCT-20
9-OCT-20
9-OCT-20

FIRST ANGLE PROJECTION



NOTES:

1. INSTALLATION SHALL COMPLY WITH ALL APPLICABLE NATIONAL, STATE AND LOCAL CODES.
2. REFER TO PRODUCT DOCUMENTATION FOR ADDITIONAL DETAILS PRIOR TO INSTALLATION AND SITE PREPARATION WORK.
3. ALL DIMENSIONS ARE IN MILLIMETERS.

△4. SEISMIC LOCATION : OPTIONAL SEISMIC KIT IS REQUIRED (GVSOPT002).

NON-SEISMIC LOCATION: THE FRONT AND REAR TRANSPARATION BRACKET CAN BE USED.

THIS DRAWING AND SPECIFICATIONS HEREIN ARE THE PROPERTY OF SCHNEIDER ELECTRIC AND SHALL NOT BE COPIED, REPRODUCED OR USED IN WHOLE OR IN PART, AS THE BASIS FOR THE MANUFACTURE OR SALE OF ITEMS WITHOUT WRITTEN PERMISSION FROM SCHNEIDER ELECTRIC. THIS DRAWING IS BASED UPON LATEST AVAILABLE INFORMATION AND IS SUBJECT TO CHANGE WITHOUT NOTICE.

Schneider Electric

TITLE: GALAXY VS
UPS 20-100kW
INPUT: 400V, 3PH, 60Hz
OUTPUT: 400V, 3PH OR 3PH+N, 50-60Hz
ANCHORING DETAILS

DWG NO: GVSUPS20K100HS

REV. 1

DRAWN: K.NAGENDRA/BALA 9-OCT-20

FIRST

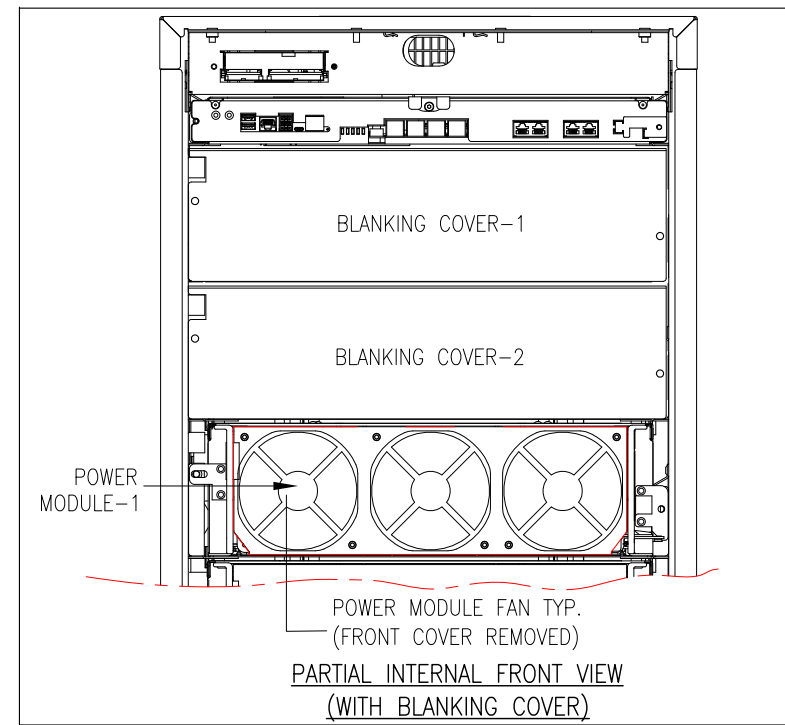
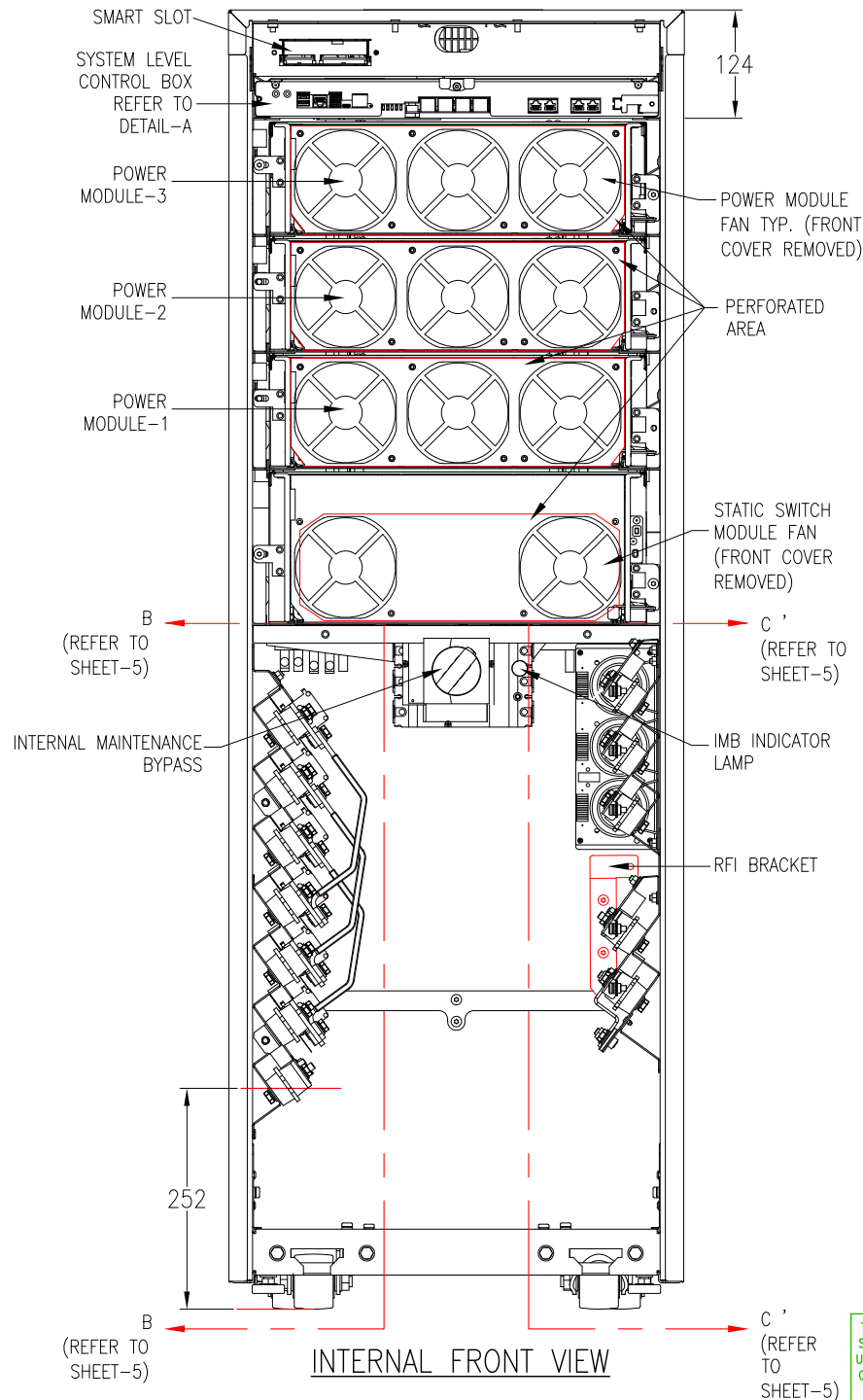
ENGINEER: H. NICOLAISEN/P. BONDE 9-OCT-20

ANGLE

APPROVED: HENRIK NICOLAISEN 9-OCT-20

PROJECTION:

PROJECT: SUBMITTAL DRAWINGS SHEET 3 OF 5



POWER MODULE AND BLANKING COVER DETAILS			
SKU NUMBER	UPS RATING (kW)	APPLICABLE POWER MODULES	APPLICABLE BLANKING COVERS
GVSUPS20KHS / GVSUPS20KHINS	20	1	1, 2
GVSUPS30KHS / GVSUPS30KHINS	30		
GVSUPS40KHS / GVSUPS40KHINS	40		
GVSUPS50KHS / GVSUPS50KHINS	50	1, 2	1
GVSUPS60KHS / GVSUPS60KHINS	60		
GVSUPS80KHS / GVSUPS80KHINS	80		
GVSUPS100KHS / GVSUPS100KHINS	100		

NOTES:

1. INSTALLATION SHALL COMPLY WITH ALL APPLICABLE NATIONAL, STATE AND LOCAL CODES.
2. REFER TO PRODUCT DOCUMENTATION FOR ADDITIONAL DETAILS PRIOR TO INSTALLATION AND SITE PREPARATION WORK.
3. ALL DIMENSIONS ARE IN MILLIMETERS.
4. SOME STRUCTURAL DETAILS HAVE BEEN OMITTED FOR THE PURPOSE OF CLARITY.

THIS DRAWING AND SPECIFICATIONS HEREIN ARE THE PROPERTY OF SCHNEIDER ELECTRIC AND SHALL NOT BE COPIED, REPRODUCED OR USED IN WHOLE OR IN PART, AS THE BASIS FOR THE MANUFACTURE OR SALE OF ITEMS WITHOUT WRITTEN PERMISSION FROM SCHNEIDER ELECTRIC. THIS DRAWING IS BASED UPON LATEST AVAILABLE INFORMATION AND IS SUBJECT TO CHANGE WITHOUT NOTICE.

Schneider Electric

TITLE: GALAXY VS
UPS 20-100kW
INPUT: 400V, 3PH, 60Hz
OUTPUT: 400V, 3PH OR 3PH+N, 50-60Hz
INTERNAL VIEWS

PROJECT: SUBMITTAL DRAWINGS SHEET 4 OF 5

DWG NO: GVSUPS20K100HS

DRAWN: K.NAGENDRA/BALA

ENGINEER: H. NICOLAISEN/P. BONDE

APPROVED: HENRIK NICOLAISEN

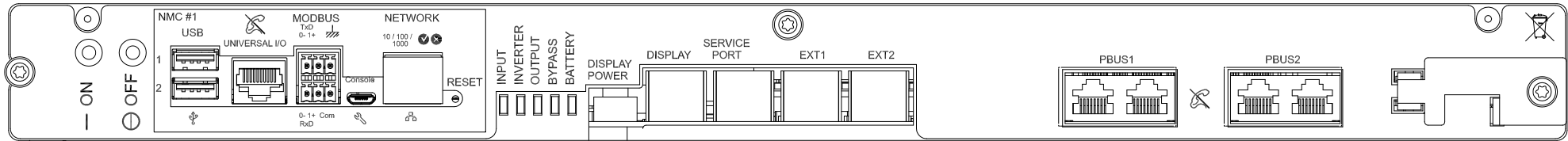
REV. 1

9-OCT-20

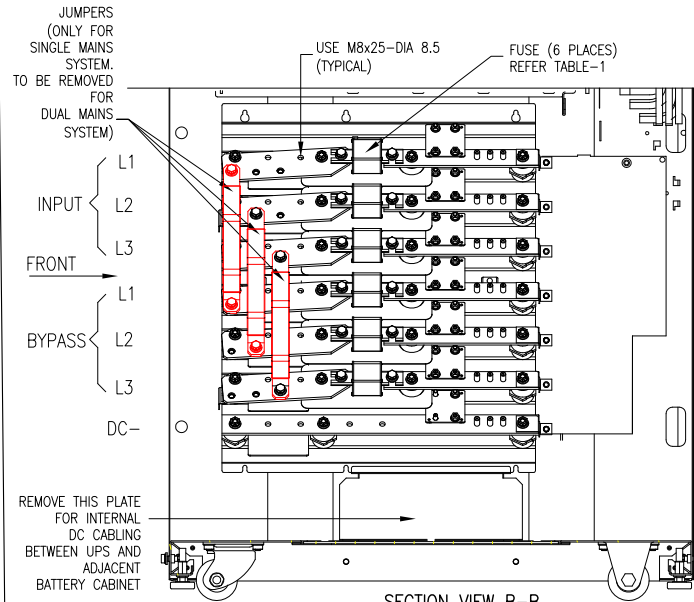
9-OCT-20

9-OCT-20

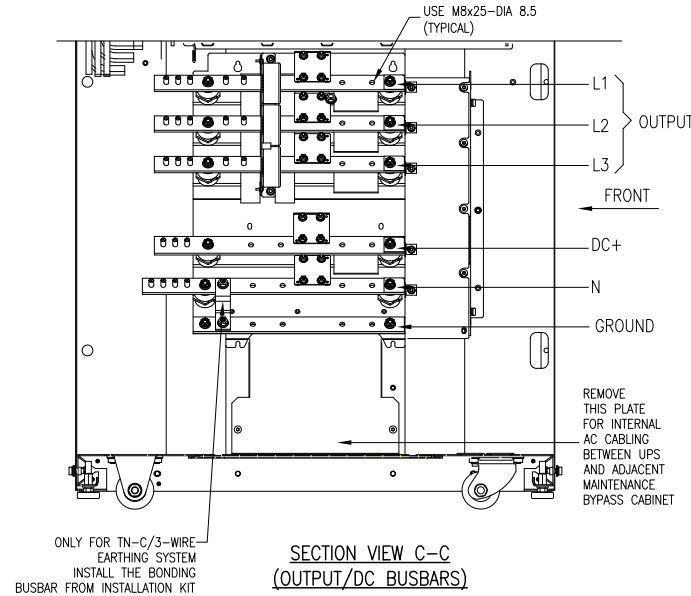
FIRST
ANGLE
PROJECTION



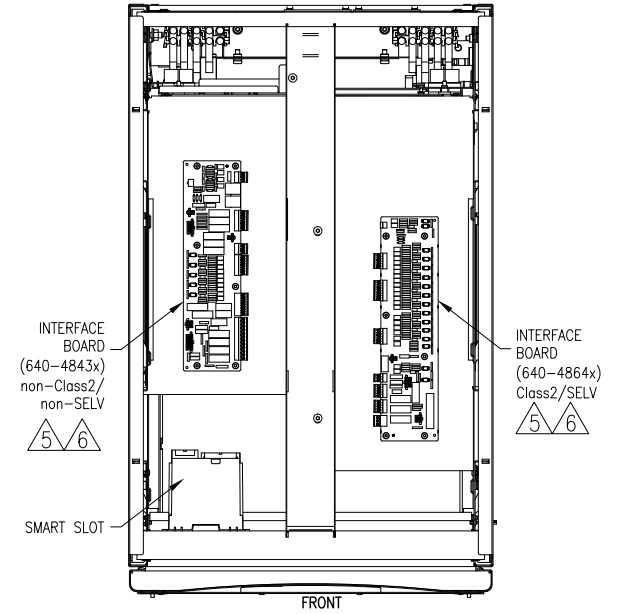
△5 DETAIL-A (SYSTEM LEVEL CONTROL BOX-ENLARGED VIEW)



SECTION VIEW B-B
(INPUT/BYPASS BUSBARS)



SECTION VIEW C-C
(OUTPUT/DC BUSBARS)



INTERNAL TOP VIEW

TABLE-1

INPUT/BYPASS FUSE DETAILS			
SKU NUMBER	UPS RATING (kW)	INPUT FUSE DETAILS	BYPASS FUSE DETAILS
GVSUPS20KHS	20	400A, 500V (MAKE & MODEL: MERSEN D30191)	315A, 690V (MAKE & MODEL: MERSEN A330188)
GVSUPS30KHS	30		
GVSUPS40KHS	40		
GVSUPS50KHS	50		
GVSUPS60KHS	60		
GVSUPS80KHS	80		
GVSUPS100KHS	100		

NOTES:

1. INSTALLATION SHALL COMPLY WITH ALL APPLICABLE NATIONAL, STATE AND LOCAL CODES.
2. REFER TO PRODUCT DOCUMENTATION FOR ADDITIONAL DETAILS PRIOR TO INSTALLATION AND SITE PREPARATION WORK.
3. ALL DIMENSIONS ARE IN MILLIMETERS.
4. SOME STRUCTURAL DETAILS HAVE BEEN OMITTED FOR THE PURPOSE OF CLARITY.
- △5. FOR INTERFACE DETAILS REFER TO SYSTEM WIRING DIAGRAM GVS20K150HS-WD.
- △6. FOR LATEST BOARD PART NUMBER CONTACT SCHNEIDER ELECTRIC.
7. THE SYSTEM IS DESIGNED TO SUPPORT MAXIMUM 150 sqmm CABLES.

THIS DRAWING AND SPECIFICATIONS HEREIN ARE THE PROPERTY OF SCHNEIDER ELECTRIC AND SHALL NOT BE COPIED, REPRODUCED OR USED IN WHOLE OR IN PART, AS THE BASIS FOR THE MANUFACTURE OR SALE OF ITEMS WITHOUT WRITTEN PERMISSION FROM SCHNEIDER ELECTRIC. THIS DRAWING IS BASED UPON LATEST AVAILABLE INFORMATION AND IS SUBJECT TO CHANGE WITHOUT NOTICE.

Schneider Electric

TITLE: GALAXY VS
UPS 20-100kW
INPUT: 400V, 3PH, 60Hz
OUTPUT: 400V, 3PH OR 3PH+N, 50-60Hz
INTERNAL AND INTERFACE DETAILS

DWG NO: GVSUPS20K100HS

REV. 0

DRAWN: K.NAGENDRA/BALA

9-OCT-20

ENGINEER: H. NICOLAISEN/P. BONDE

9-OCT-20

APPROVED: HENRIK NICOLAISEN

9-OCT-20

PROJECT: SUBMITTAL DRAWINGS SHEET 5 OF 5

FIRST ANGLE PROJECTION