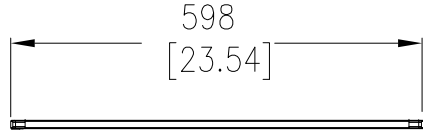
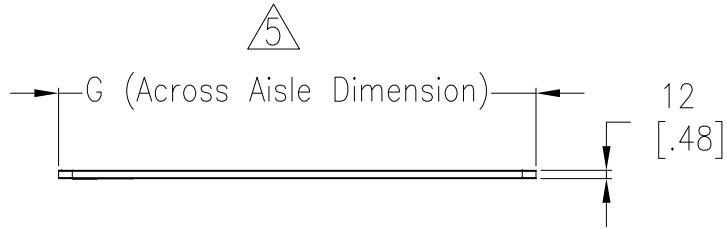


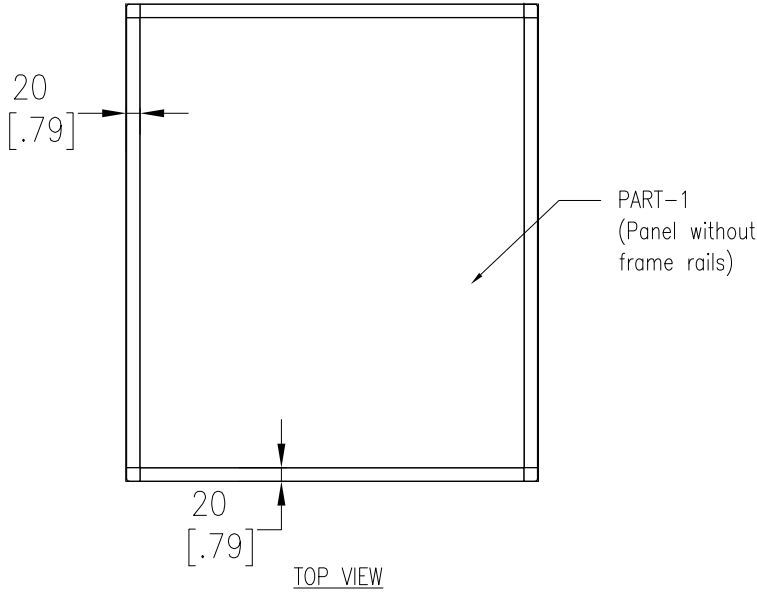
TYPICAL ARRANGEMENT- CEILING PANEL



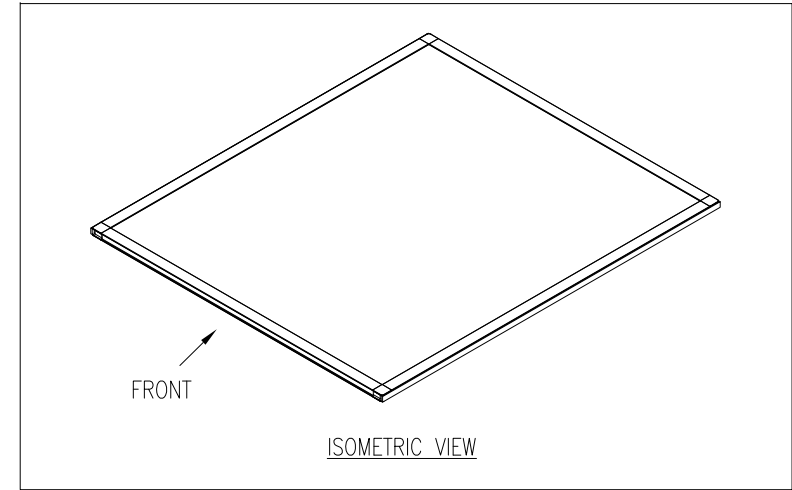
FRONT VIEW



LEFT SIDE VIEW



TOP VIEW



ISOMETRIC VIEW

Ceiling panel Configuration Details

SKU No.	Across Aisle Dimension	Part-1 details	Weight, kg (lbs)
	G, mm (inch)		
△ 5 ACDC2100	694 (27.32)	674x578 (26.54x22.76) LEXAN PANEL 6mm MSTR	1.03 (2.27)
		674x578 (26.54x22.76) PANEL SOLID PC 2.36mm	1.60 (3.52)
ACDC2102	999 (39.33)	978x578 (38.5x22.76) LEXAN PANEL 6mm MSTR	1.39 (3.06)
		978x578 (38.5x22.76) PANEL SOLID PC 2.36mm	2.27(5.00)
ACDC2104	1303 (51.30)	1283x578 (50.51x22.76) LEXAN PANEL 6mm MSTR	1.85 (3.86)
		1283x578 (50.51x22.76) PANEL SOLID PC 2.36mm	2.90 (6.37)
ACDC2106	1608 (63.31)	1588x578 (62.52x22.76) LEXAN PANEL 6mm MSTR	2.12 (4.67)
		1588x578 (62.52x22.76) PANEL SOLID PC 2.36mm	3.54 (7.78)

NOTES:

1. COMPLY WITH ALL APPLICABLE NATIONAL AND LOCAL ELECTRICAL REGULATIONS.
2. REFER TO PRODUCT DOCUMENTATION FOR ADDITIONAL DETAILS PRIOR TO INSTALLATION AND SITE PREPARATION WORK.
3. ALL DIMENSIONS ARE IN MILLIMETERS [INCHES].
4. NET WEIGHT OF UNIT-REFER TO TABLE
- △ 5. TYPICAL ARRANGEMENT SHOWN FOR CEILING PANEL-900mm(36in).

THIS DRAWING AND SPECIFICATIONS HEREIN ARE THE PROPERTY OF SCHNEIDER ELECTRIC AND SHALL NOT BE COPIED, REPRODUCED OR USED IN WHOLE OR IN PART, AS THE BASIS FOR THE MANUFACTURE OR SALE OF ITEMS WITHOUT WRITTEN PERMISSION FROM SCHNEIDER ELECTRIC. THIS DRAWING IS BASED UPON LATEST AVAILABLE INFORMATION AND IS SUBJECT TO CHANGE WITHOUT NOTICE.



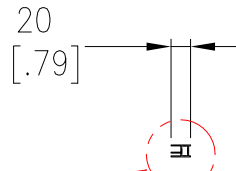
TITLE:
Eco-Aisle (TM) Aisle Containment System
CEILING PANEL
ASSEMBLY
PROJECT: SUBMITTAL DRAWINGS SHEET 1 OF 3

DWG NO: ACDC2100-2107 REV. 0
DRAWN BY: K.NAGENDRA 10-MAY-13 FIRST ANGLE
ENGINEER: JASON LI/MARK MENG 10-MAY-13 PROJ
APPROVED BY: AARON GRAFF 10-MAY-13

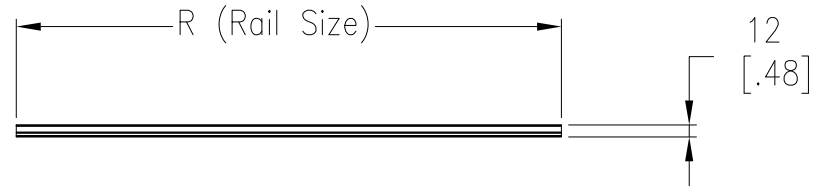
Rail Size Configuration Details

SKU No.	Rail Size
	R, mm (inch)
ACDC2100	654 (25.74)
ACDC2101	
ACDC2102	959 (37.75)
ACDC2103	
ACDC2104	1263 (49.72)
ACDC2105	
ACDC2106	1568 (61.73)
ACDC2107	

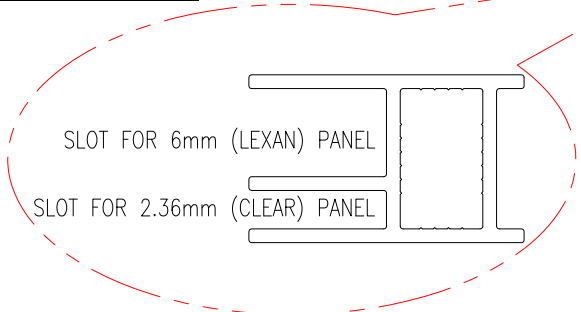
FRAME RAIL



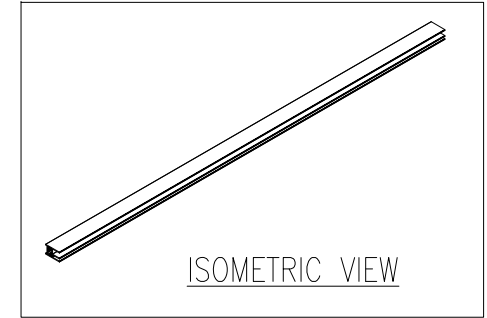
FRONT VIEW



LEFT SIDE VIEW



ENLARGED VIEW
(EXTRUSION)

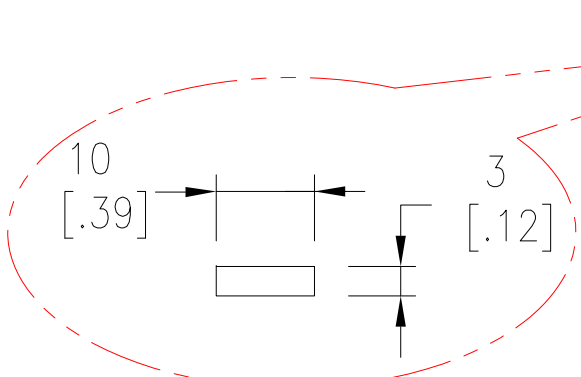


ISOMETRIC VIEW

SEAL BLACK

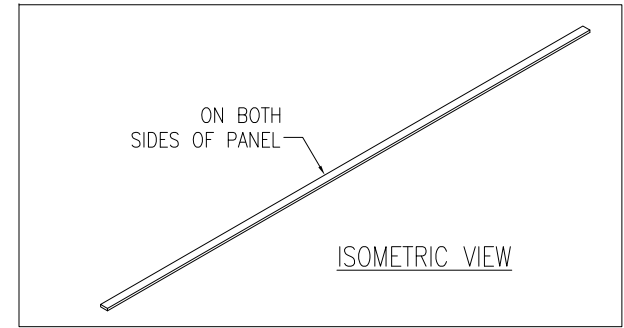


FRONT VIEW



ENLARGED VIEW

LEFT SIDE VIEW



ISOMETRIC VIEW

NOTES:

1. COMPLY WITH ALL APPLICABLE NATIONAL AND LOCAL ELECTRICAL REGULATIONS.
2. REFER TO PRODUCT DOCUMENTATION FOR ADDITIONAL DETAILS PRIOR TO INSTALLATION AND SITE PREPARATION WORK.
3. ALL DIMENSIONS ARE IN MILLIMETERS [INCHES].

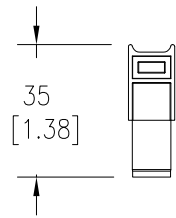
THIS DRAWING AND SPECIFICATIONS HEREIN ARE THE PROPERTY OF SCHNEIDER ELECTRIC AND SHALL NOT BE COPIED, REPRODUCED OR USED IN WHOLE OR IN PART, AS THE BASIS FOR THE MANUFACTURE OR SALE OF ITEMS WITHOUT WRITTEN PERMISSION FROM SCHNEIDER ELECTRIC. THIS DRAWING IS BASED UPON LATEST AVAILABLE INFORMATION AND IS SUBJECT TO CHANGE WITHOUT NOTICE.



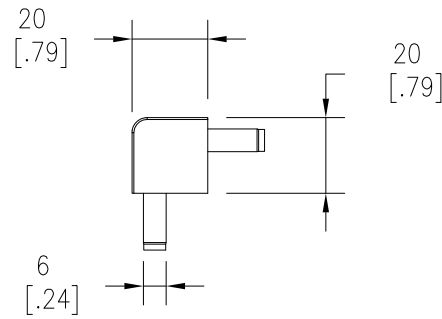
TITLE:
Eco-Aisle (TM) Aisle Containment System
CEILING PANEL
FRAME RAIL AND SEAL BLACK
PROJECT: SUBMITTAL DRAWINGS SHEET 2 OF 3

DWG NO:	ACDC2100-2107	REV.	0
DRAWN BY:	K.NAGENDRA	10-MAY-13	FIRST
ENGINEER:	JASON LJ/MARK MENG	10-MAY-13	ANGLE
APPROVED BY:	AARON GRAFF	10-MAY-13	PROJ

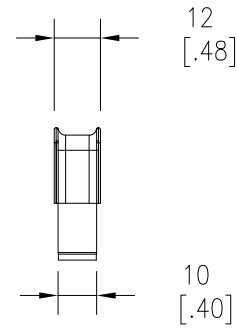
CORNER SUPPORT, QTY. 4 PER PANEL



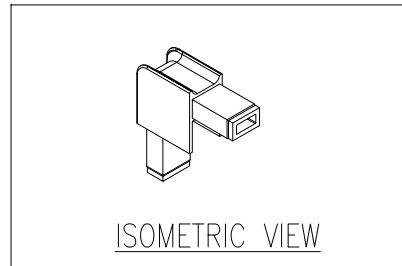
RIGHT SIDE VIEW



FRONT VIEW



LEFT SIDE VIEW



ISOMETRIC VIEW

NOTES:

1. COMPLY WITH ALL APPLICABLE NATIONAL AND LOCAL ELECTRICAL REGULATIONS.
2. REFER TO PRODUCT DOCUMENTATION FOR ADDITIONAL DETAILS PRIOR TO INSTALLATION AND SITE PREPARATION WORK.
3. ALL DIMENSIONS ARE IN MILLIMETERS [INCHES].

THIS DRAWING AND SPECIFICATIONS HEREIN ARE THE PROPERTY OF SCHNEIDER ELECTRIC AND SHALL NOT BE COPIED, REPRODUCED OR USED IN WHOLE OR IN PART, AS THE BASIS FOR THE MANUFACTURE OR SALE OF ITEMS WITHOUT WRITTEN PERMISSION FROM SCHNEIDER ELECTRIC. THIS DRAWING IS BASED UPON LATEST AVAILABLE INFORMATION AND IS SUBJECT TO CHANGE WITHOUT NOTICE.



TITLE:
Eco-Aisle (TM) Aisle Containment System
CEILING PANEL
CORNER SUPPORT

PROJECT: SUBMITTAL DRAWINGS SHEET 3 OF 3

DWG NO:	ACDC2100-2107	REV.	0
DRAWN BY:	K.NAGENDRA	10-MAY-13	FIRST
ENGINEER:	JASON LI/MARK MENG	10-MAY-13	ANGLE
APPROVED BY:	AARON GRAFF	10-MAY-13	PROJ