

**NOTES:**

1. INSTALLATION SHALL COMPLY WITH ALL APPLICABLE NATIONAL, STATE AND LOCAL ELECTRICAL CODES.
2. PLEASE REFER TO APC PRODUCT MANUALS FOR DETAILS.
3. ALL DIMENSIONS ARE IN INCHES [MILLIMETERS].
- △ 4. FRONT AND REAR ACCESS ARE REQUIRED FOR SERVICE. MINIMUM RECOMMENDED FRONT CLEARANCE IS 39.4 [1000] AND REAR CLEARANCE IS 36.0 [900], BUT INSTALLATION SHALL COMPLY WITH ALL APPLICABLE NATIONAL, STATE AND LOCAL ELECTRICAL CODES.
5. CABLE ENTRY IS FROM BOTTOM OF UNIT.
6. WEIGHT OF THE UNIT IS 304 lbs [138 kg].
- △ 7. MAXIMUM HEIGHT OF THE UNIT INCLUDES TOP PROTRUSIONS AND CAPTIVE FASTENERS.

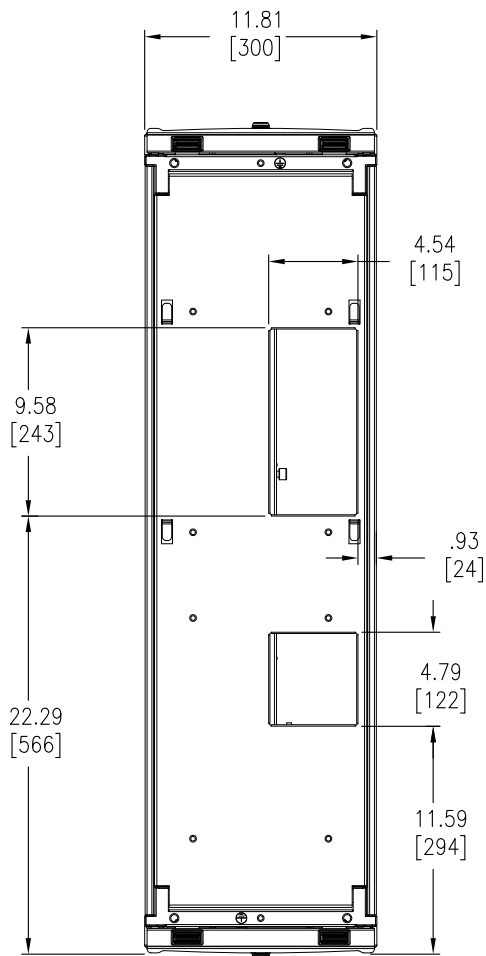
THIS DRAWING AND SPECIFICATIONS HEREIN ARE THE PROPERTY OF SCHNEIDER ELECTRIC AND SHALL NOT BE COPIED, REPRODUCED OR USED IN WHOLE OR IN PART, AS THE BASIS FOR THE MANUFACTURE OR SALE OF ITEMS WITHOUT WRITTEN PERMISSION FROM SCHNEIDER ELECTRIC. THIS DRAWING IS BASED UPON LATEST AVAILABLE INFORMATION AND IS SUBJECT TO CHANGE WITHOUT NOTICE.



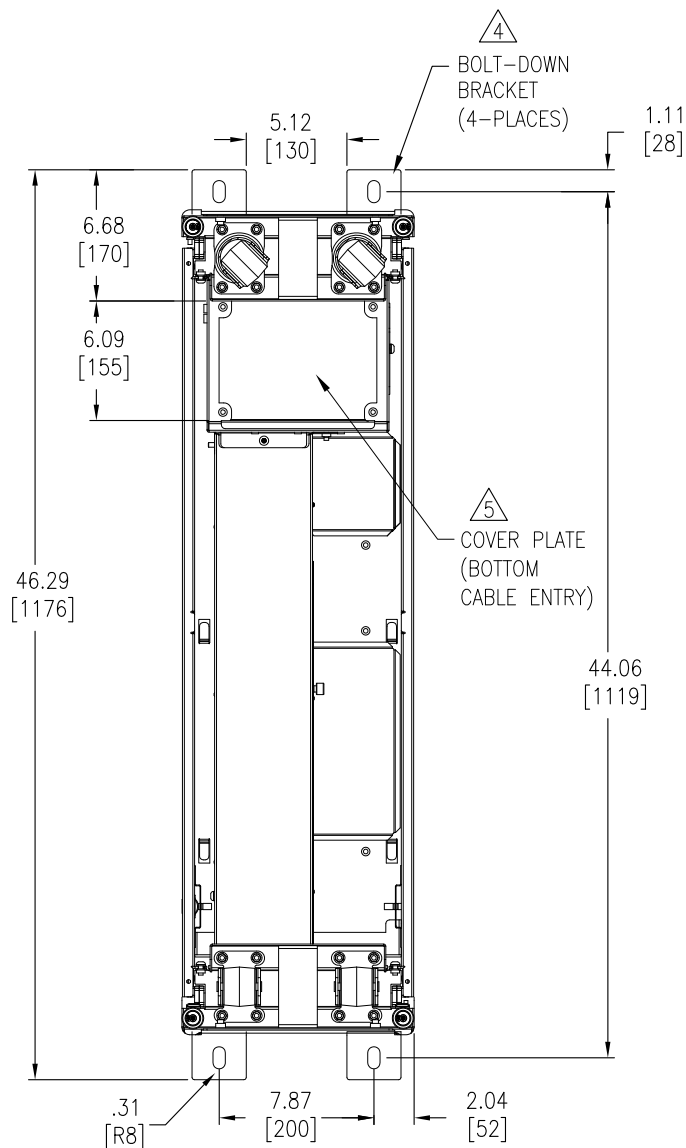
TITLE:  
APC Symmetra PX100kW  
POWER DISTRIBUTION  
BOTTOM FEED SIDE CAR, 300mm  
MAIN MECHANICAL

PROJECT: SUBMITTAL DRAWINGS SHEET 1 OF 3

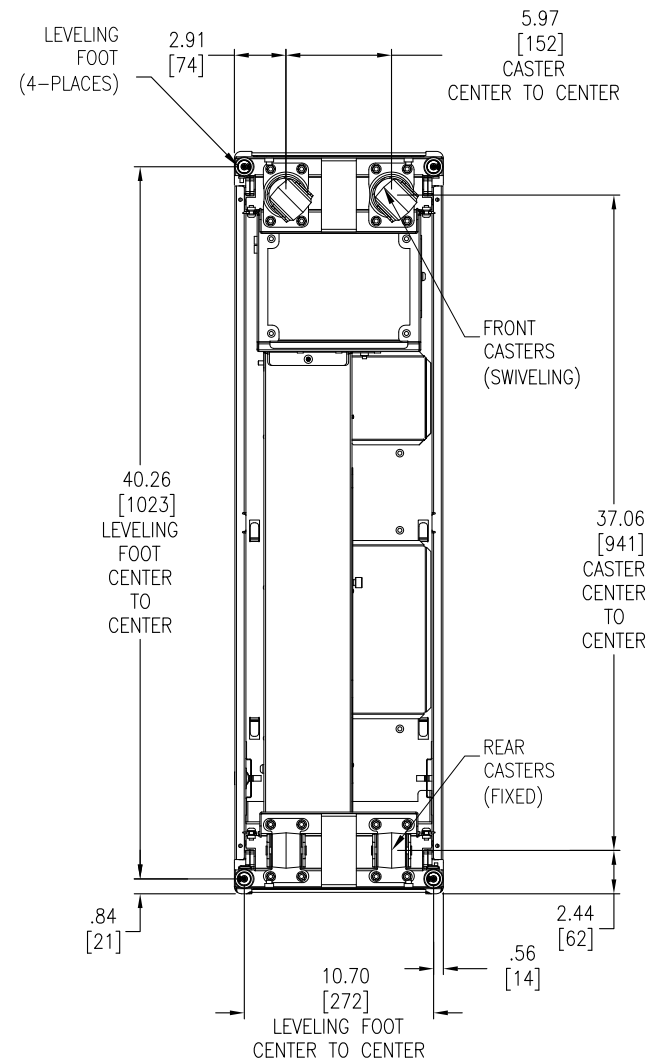
|              |                     |           |            |
|--------------|---------------------|-----------|------------|
| DWG NO:      | PDPM100SC           | REV.      | 0          |
| DRAWN BY:    | K.NAGENDRA          | 15-SEP-10 | THIRD      |
| ENGINEER:    | F.S/K.S/C.F.P/J.S   | 15-SEP-10 | ANGLE      |
| APPROVED BY: | B.SHERIDAN/JLAUFFER | 15-SEP-10 | PROJECTION |



TOP VIEW



BOTTOM VIEW



CASTERS AND LEVELING FOOT DETAILS

NOTES:

1. INSTALLATION SHALL COMPLY WITH ALL APPLICABLE NATIONAL, STATE AND LOCAL CODES.
2. PLEASE REFER TO PRODUCT MANUALS FOR ADDITIONAL DETAILS.
3. ALL DIMENSIONS ARE IN INCHES [MILLIMETERS].
- △4. ANCHORING BRACKETS CAN BE INSTALLED AT FRONT AND BACK OF UNIT. ADEQUATE FRONT AND REAR CLEARANCE SHOULD BE PROVIDED IF THE UNIT IS TO BE ANCHORED. FOR RECOMMENDED CLEARANCE SEE NOTE 4 ON PAGE 1. USE CODE COMPLIANT FASTENERS TO SECURE UNIT TO THE FLOOR. BOLT DOWN KIT (SKU # AR7701) IS OPTIONAL AND HAS TO BE ORDERED SEPARATELY.
- △5. REMOVE THE DEDICATED COVER PLATE. DRILL THE HOLES IN THE PLATE CONDUITS AND RE-INSTALL THE PLATE WITH THE CONDUIT INSTALLED.

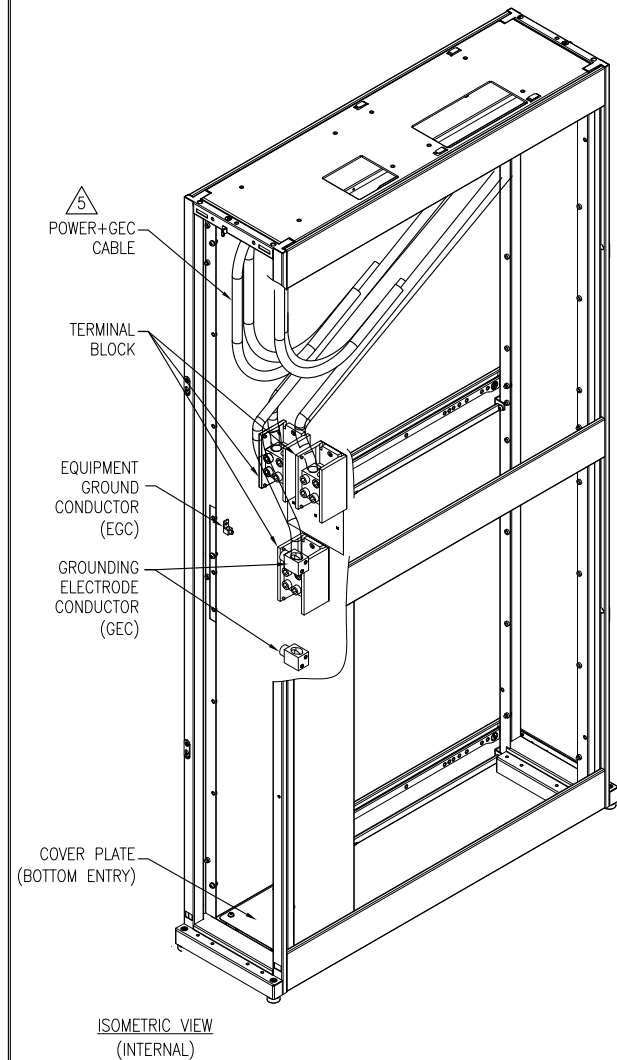
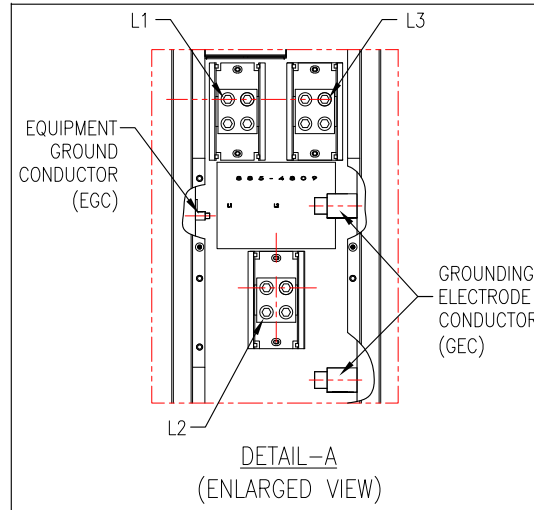
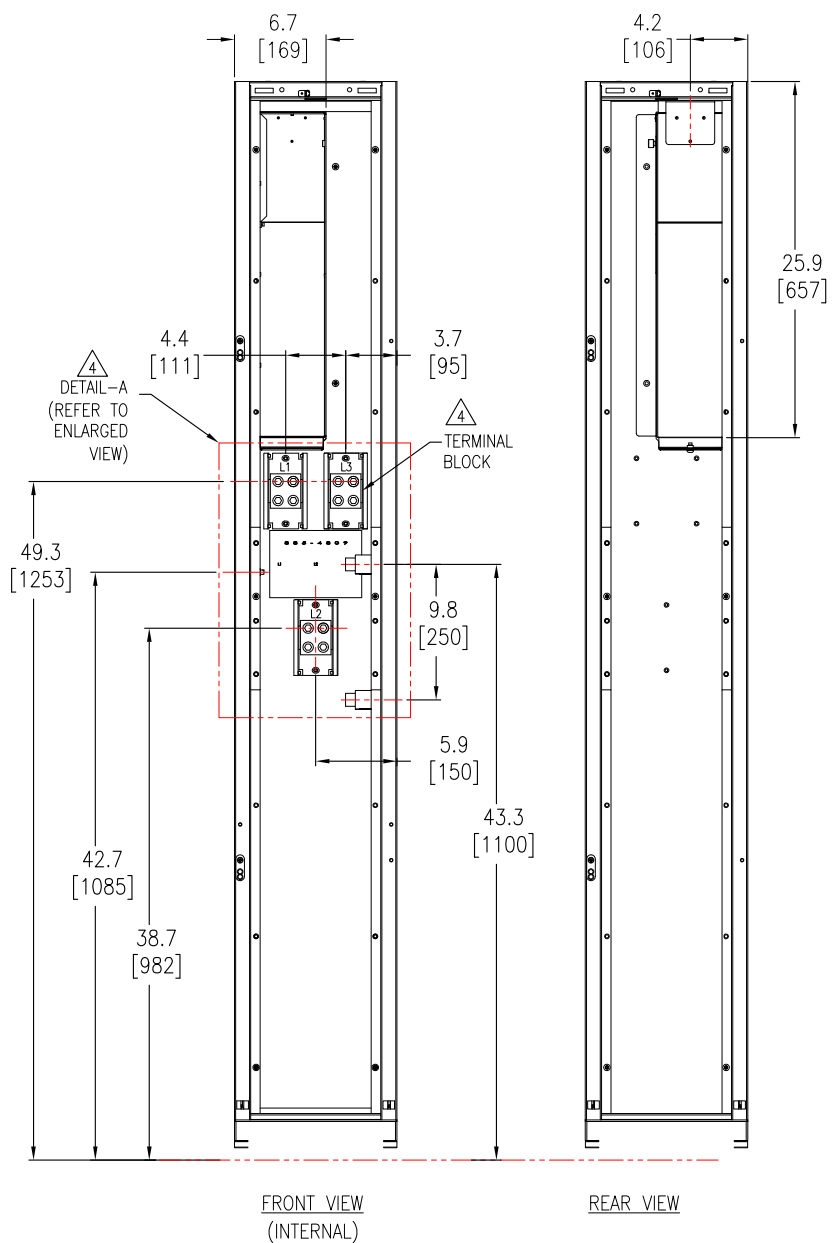
THIS DRAWING AND SPECIFICATIONS HEREIN ARE THE PROPERTY OF SCHNEIDER ELECTRIC AND SHALL NOT BE COPIED, REPRODUCED OR USED IN WHOLE OR IN PART, AS THE BASIS FOR THE MANUFACTURE OR SALE OF ITEMS WITHOUT WRITTEN PERMISSION FROM SCHNEIDER ELECTRIC. THIS DRAWING IS BASED UPON LATEST AVAILABLE INFORMATION AND IS SUBJECT TO CHANGE WITHOUT NOTICE.



TITLE:  
APC Symmetra PX100kW  
POWER DISTRIBUTION  
BOTTOM FEED SIDE CAR, 300mm  
TOP & BOTTOM VIEW

PROJECT: SUBMITTAL DRAWINGS SHEET 2 OF 3

|              |                     |           |            |
|--------------|---------------------|-----------|------------|
| DWG NO:      | PDPM100SC           | REV:      | 0          |
| DRAWN BY:    | K.NAGENDRA          | 15-SEP-10 | THIRD      |
| ENGINEER:    | F.S/K.S/C.F.P/J.S   | 15-SEP-10 | ANGLE      |
| APPROVED BY: | B.SHERIDAN/JLAUFFER | 15-SEP-10 | PROJECTION |



**NOTES:**

1. INSTALLATION SHALL COMPLY WITH ALL APPLICABLE NATIONAL, STATE AND LOCAL CODES.
2. PLEASE REFER TO PRODUCT MANUALS FOR ADDITIONAL DETAILS.
3. ALL DIMENSIONS ARE IN INCHES [MILLIMETERS].
4. CONNECT THE INPUT TO THE L1,L2,L3, EGC & GEC TERMINALS. TERMINAL BLOCK - REQUIRED TORQUE VALUE IS 56.5 Nm.
- △ 5. 3-PHASE CABLE FOR SIDE CAR TO THE PDU POWER CONNECTION AND ONE GEC CABLE PROVIDED WITH THIS SKU.

THIS DRAWING AND SPECIFICATIONS HEREIN ARE THE PROPERTY OF SCHNEIDER ELECTRIC AND SHALL NOT BE COPIED, REPRODUCED OR USED IN WHOLE OR IN PART, AS THE BASIS FOR THE MANUFACTURE OR SALE OF ITEMS WITHOUT WRITTEN PERMISSION FROM SCHNEIDER ELECTRIC. THIS DRAWING IS BASED UPON LATEST AVAILABLE INFORMATION AND IS SUBJECT TO CHANGE WITHOUT NOTICE.



TITLE:  
APC Symmetra PX100kW  
POWER DISTRIBUTION  
BOTTOM FEED SIDE CAR, 300mm  
INTERNAL VIEW

PROJECT: SUBMITTAL DRAWINGS SHEET 3 OF 3

|              |                     |           |            |
|--------------|---------------------|-----------|------------|
| DWG NO:      | PDPM100SC           | REV.      | 0          |
| DRAWN BY:    | K.NAGENDRA          | 15-SEP-10 | THIRD      |
| ENGINEER:    | F.S/K.S/C.F.P/J.S   | 15-SEP-10 | ANGLE      |
| APPROVED BY: | B.SHERIDAN/JLAUFFER | 15-SEP-10 | PROJECTION |