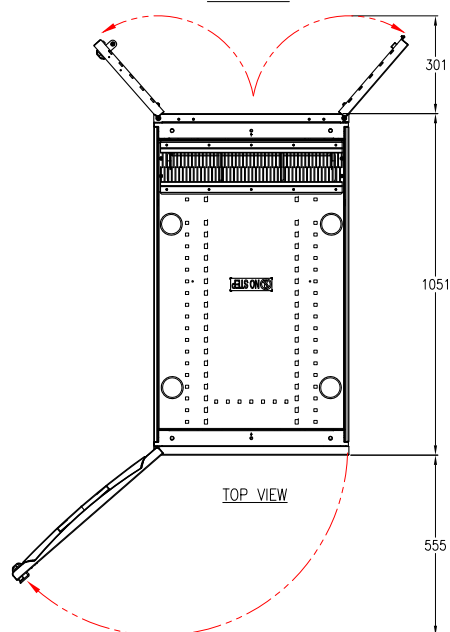


DISPLAY INTERFACE
(ENLARGED)



NOTES:

1. INSTALLATION MUST COMPLY ALL APPLICABLE NATIONAL AND LOCAL ELECTRICAL REGULATIONS
2. PLEASE REFER TO PRODUCT MANUAL FOR DETAILED INFORMATION.
3. ALL DIMENSIONS ARE IN MILLIMETERS, UNLESS OTHERWISE SPECIFIED.
4. CABLE ENTRY DETAILS:
 - i) INSTALLATION WITH PDU-XR = LEFT AND RIGHT SIDES OF THE UNIT.
 - ii) INSTALLATION WITH MAINTENANCE BYPASS PANEL = TOP OR BOTTOM OF THE UNIT.
 - iii) INSTALLATION WITH MAINTENANCE BYPASS PANEL AND DETACHED UPS = TOP OR BOTTOM OF THE UNIT.

△ 5. NET WEIGHT AND COG DETAILS.

UPS Rating	Number of Powermodules	Number of Blanking plates	Total Weight	Center of Gravity with PM's			Center of Gravity without PM's		
				X DISTANCE	Y DISTANCE	Z DISTANCE	X DISTANCE	Y DISTANCE	Z DISTANCE
160kW	10	NA	610kg	294 mm	1094 mm	439 mm	289 mm	968 mm	518 mm
128kW	8	2	553kg	293 mm	1024 mm	448 mm			
96kW	6	4	496kg	293 mm	970 mm	460 mm			
64kW	4	6	439kg	292 mm	934 mm	474 mm			
32kW	2	8	382kg	290 mm	929 mm	493 mm			

NET WEIGHT OF THE UNIT WITHOUT POWER MODULES IS 325 kg.

NET WEIGHT OF THE POWER MODULE IS 28.5kg.

△ 6. MAXIMUM HEIGHT OF THE UNIT IS 2011mm

(INCLUDES TOP PROTRUSIONS, BOLTS AND NUTS THAT ARE MOUNTED ON TOP OF THE UNIT).

THIS DRAWING AND SPECIFICATIONS HEREIN ARE THE PROPERTY OF SCHNEIDER ELECTRIC AND SHALL NOT BE COPIED, REPRODUCED OR USED IN WHOLE OR IN PART, AS THE BASIS FOR THE MANUFACTURE OR SALE OF ITEMS WITHOUT WRITTEN PERMISSION FROM SCHNEIDER ELECTRIC. THIS DRAWING IS BASED UPON LATEST AVAILABLE INFORMATION AND IS SUBJECT TO CHANGE WITHOUT NOTICE.

Schneider Electric

TITLE:

SYMMETRA PX 160
INPUT: 400V, 3PH
OUTPUT: 230V, 400V, 3PH
MAIN MECHANICAL

PROJECT: SUBMITTAL DRAWINGS SHEET 1 OF 7

DWG NO:

SYCF160KH-MM1

DRAWN: C KRISHNA

ENGINEER: S.LEE

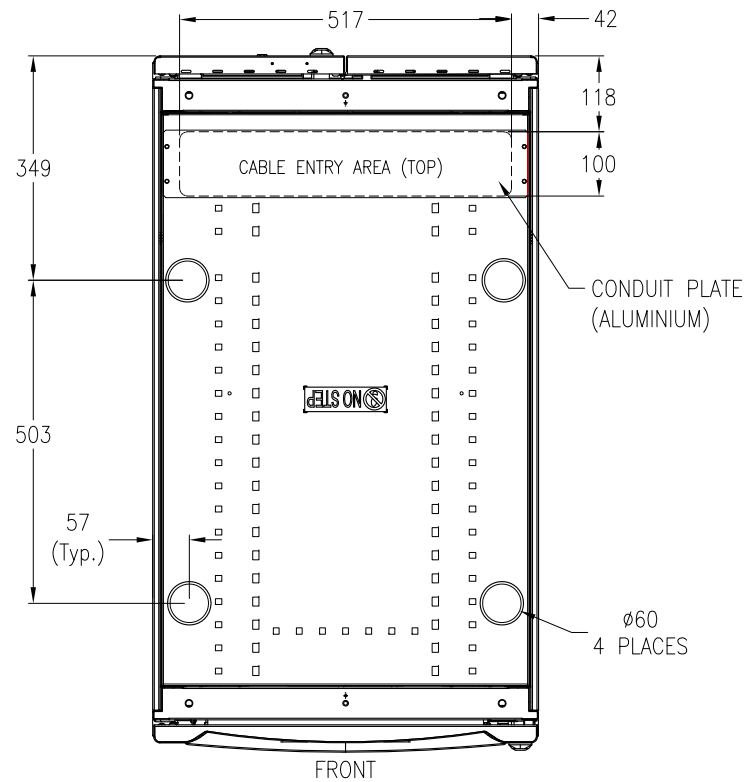
APPROVED: CLARSEN/S.WAGH/E.SILVA

REV:

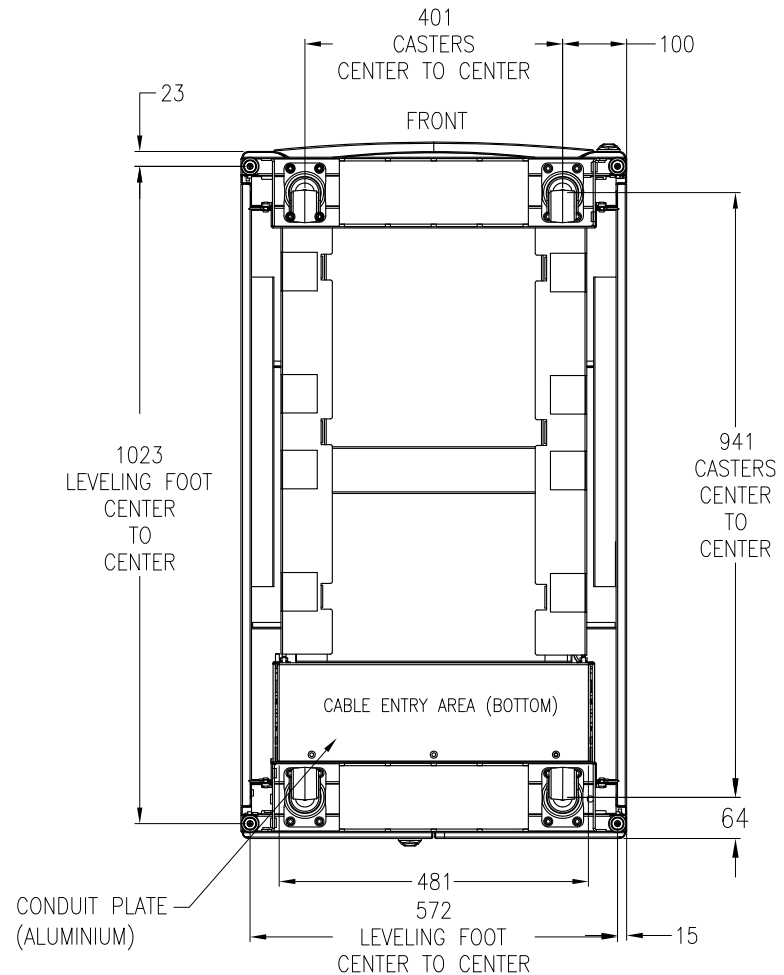
1

FIRST ANGLE

PROJECTION



TOP VIEW
(WITHOUT BRUSH STRIP ASSEMBLY)



BOTTOM VIEW

NOTES:

1. INSTALLATION MUST COMPLY ALL APPLICABLE NATIONAL AND LOCAL ELECTRICAL REGULATIONS
2. PLEASE REFER TO PRODUCT MANUAL FOR DETAILED INFORMATION.
3. ALL DIMENSIONS ARE IN MILLIMETERS. UNLESS OTHERWISE SPECIFIED.
4. FOR TOP OR BOTTOM CABLE ENTRY REMOVE TOP OR BOTTOM CONDUIT PLATE, DRILL/PUNCH HOLES WITH-IN PROVIDED CABLE ENTRY AREA REFIT COVER AND INSTALL CONDUITS.

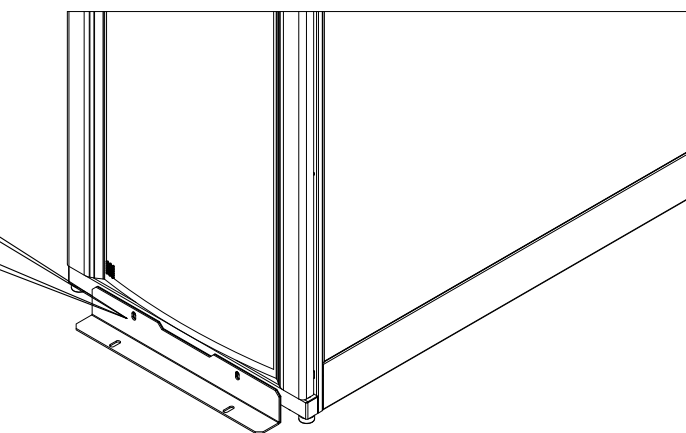
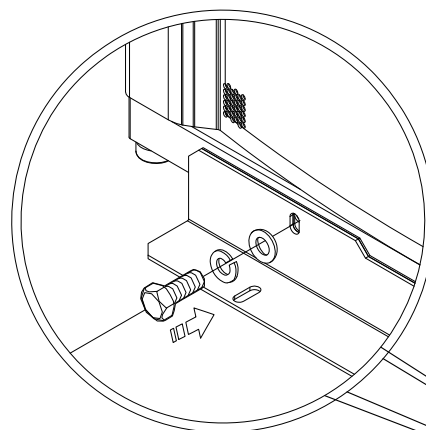
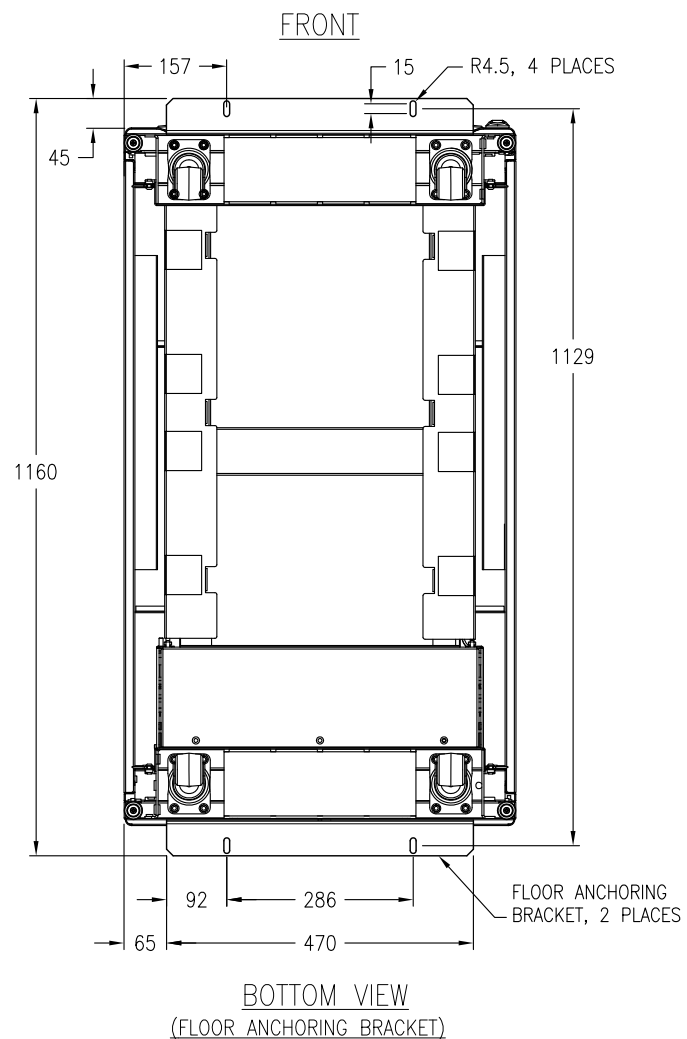
THIS DRAWING AND SPECIFICATIONS HEREIN ARE THE PROPERTY OF SCHNEIDER ELECTRIC AND SHALL NOT BE COPIED, REPRODUCED OR USED IN WHOLE OR IN PART, AS THE BASIS FOR THE MANUFACTURE OR SALE OF ITEMS WITHOUT WRITTEN PERMISSION FROM SCHNEIDER ELECTRIC. THIS DRAWING IS BASED UPON LATEST AVAILABLE INFORMATION AND IS SUBJECT TO CHANGE WITHOUT NOTICE.

Schneider
Electric

TITLE:
SYMMETRA PX 160
INPUT: 400V, 3PH
OUTPUT: 230V, 400V, 3PH
TOP AND BOTTOM VIEW
PROJECT: SUBMITTAL DRAWINGS SHEET 2 OF 7

DWG NO: SYCF160KH-MM2
DRAWN: JAYAPRAKASH
ENGINEER: S.LEE
APPROVED: CLARSEN/S.WAGH/E.SILVA

REV: 1
FIRST
ANGLE
PROJECTION



NOTES:

1. INSTALLATION SHALL COMPLY WITH ALL APPLICABLE NATIONAL, STATE AND LOCAL ELECTRICAL REGULATIONS.
2. SEE PRODUCT DOCUMENTATION FOR FURTHER INFORMATION
3. UNLESS OTHERWISE SPECIFIED, ALL DIMENSIONS ARE IN MILLIMETERS.
4. TO STABILIZE ENCLOSURE IN THE FIELD USE INCLUDED ANCHORING BRACKETS. ATTACH THE BRACKETS TO THE UNIT AS SHOWN.
USE CODE COMPLIANT FASTENERS TO SECURE THE UNIT TO THE FLOOR

THIS DRAWING AND SPECIFICATIONS HEREIN ARE THE PROPERTY OF SCHNEIDER ELECTRIC AND SHALL NOT BE COPIED, REPRODUCED OR USED IN WHOLE OR IN PART, AS THE BASIS FOR THE MANUFACTURE OR SALE OF ITEMS WITHOUT WRITTEN PERMISSION FROM SCHNEIDER ELECTRIC. THIS DRAWING IS BASED UPON LATEST AVAILABLE INFORMATION AND IS SUBJECT TO CHANGE WITHOUT NOTICE.

Schneider
Electric

TITLE:

SYMMETRA PX 160
INPUT: 400V, 3PH
OUTPUT: 230V, 400V, 3PH
ANCHORING DETAILS

PROJECT: SUBMITTAL DRAWINGS SHEET 3 OF 7

DWG NO:

SYCF160KH-MM3

DRAWN:

JAYAPRAKASH

ENGINEER:

S.LEE

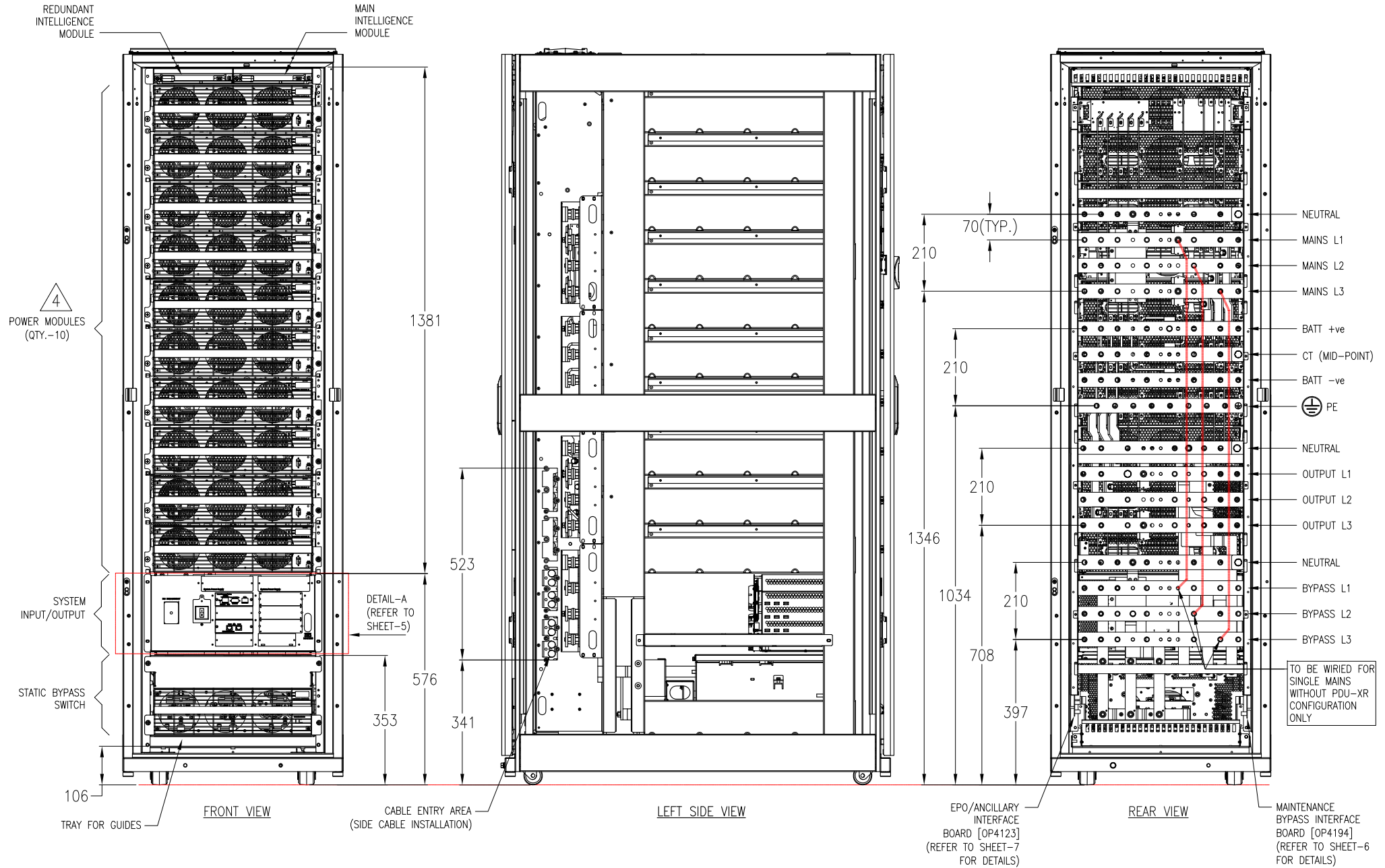
APPROVED: C.LARSEN/S.WAGH/E.SILVA

REV:

0

FIRST
ANGLE
PROJECTION

Rating = 160kW



NOTES:

1. INSTALLATION MUST COMPLY ALL APPLICABLE NATIONAL AND LOCAL ELECTRICAL REGULATIONS
2. PLEASE REFER TO PRODUCT MANUAL FOR DETAILED INFORMATION.
3. ALL DIMENSIONS ARE IN MILLIMETERS. UNLESS OTHERWISE SPECIFIED.
- △4. CONFIGURATION SHOWN WITH "SYCF160KH + (10) SYPM10K16H" FOR 160kW

THIS DRAWING AND SPECIFICATIONS HEREIN ARE THE PROPERTY OF SCHNEIDER ELECTRIC AND SHALL NOT BE COPIED, REPRODUCED OR USED IN WHOLE OR IN PART, AS THE BASIS FOR THE MANUFACTURE OR SALE OF ITEMS WITHOUT WRITTEN PERMISSION FROM SCHNEIDER ELECTRIC. THIS DRAWING IS BASED UPON LATEST AVAILABLE INFORMATION AND IS SUBJECT TO CHANGE WITHOUT NOTICE.

Schneider Electric

TITLE:

SYMMETRA PX 160
INPUT: 400V, 3PH
OUTPUT: 230V, 400V, 3PH
INTERNAL VIEW-1

PROJECT: SUBMITTAL DRAWINGS SHEET 4 OF 7

DWG NO:

SYCF160KH-ME1

ENGINEER:

S.LEE

APPROVED: CLARSEN/S.WAGH/E.SILVA

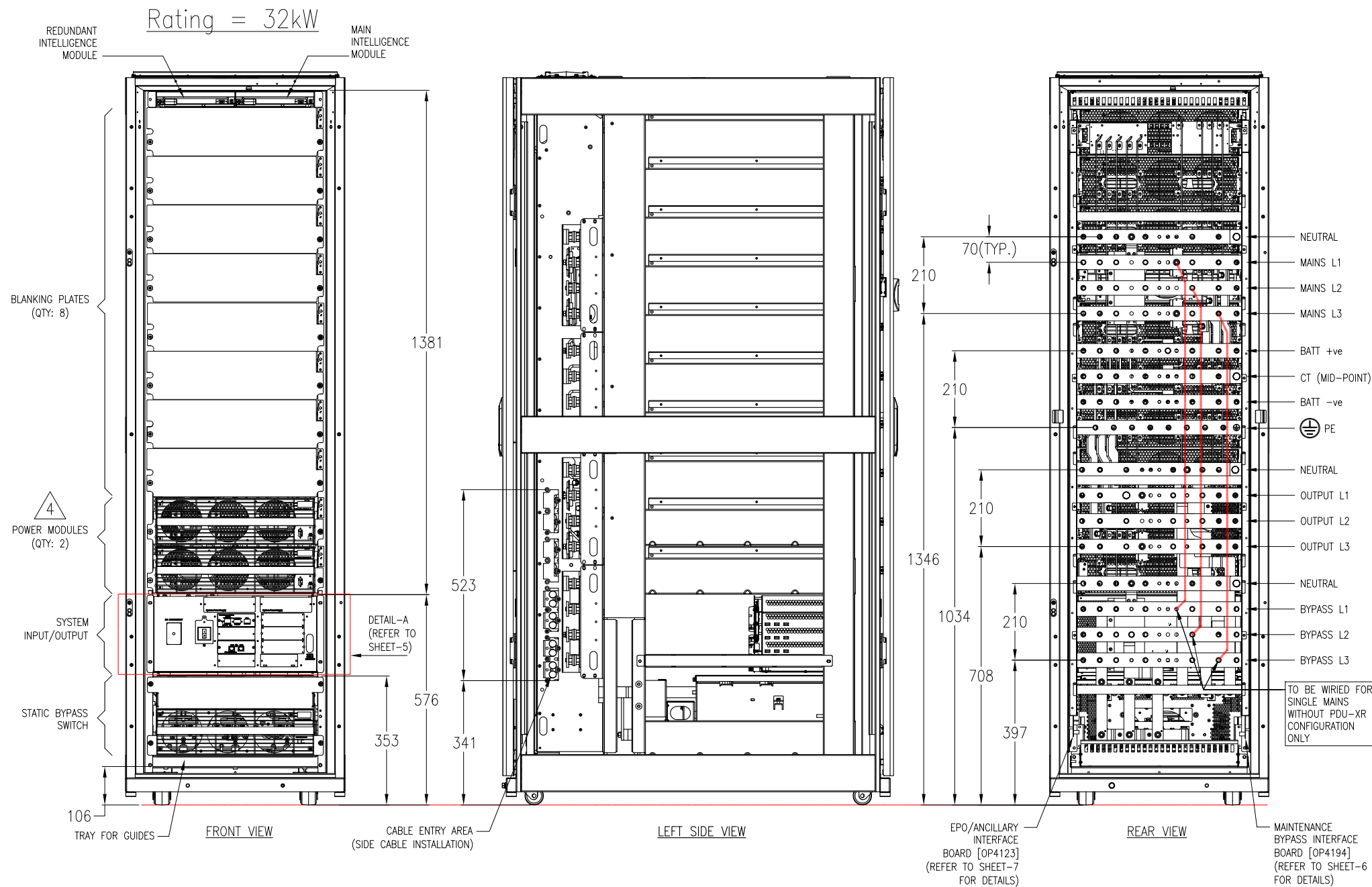
REV. 3

FIRST ANGLE PROJECTION

06-NOV-12

10-OCT-09

10-OCT-09



NOTES:

1. INSTALLATION MUST COMPLY ALL APPLICABLE NATIONAL AND LOCAL ELECTRICAL REGULATIONS
2. PLEASE REFER TO PRODUCT MANUAL FOR DETAILED INFORMATION.
3. ALL DIMENSIONS ARE IN MILLIMETERS. UNLESS OTHERWISE SPECIFIED.
- △ 4. CONFIGURATION SHOWN WITH "SYCF160KH + (2) SYPM10K16H" FOR 32kW

THIS DRAWING AND SPECIFICATIONS HEREIN ARE THE PROPERTY OF SCHNEIDER ELECTRIC AND SHALL NOT BE COPIED, REPRODUCED OR USED IN WHOLE OR IN PART, AS THE BASIS FOR THE MANUFACTURE OR SALE OF ITEMS WITHOUT WRITTEN PERMISSION FROM SCHNEIDER ELECTRIC. THIS DRAWING IS BASED UPON LATEST AVAILABLE INFORMATION AND IS SUBJECT TO CHANGE WITHOUT NOTICE.

Schneider Electric

TITLE:

SYMMETRA PX 160
INPUT: 400V, 3PH
OUTPUT: 230V, 400V, 3PH
INTERNAL VIEW-2

PROJECT: SUBMITTAL DRAWINGS SHEET 5 OF 7

DWG NO:

SYCF160KH-ME2

ENGINEER:

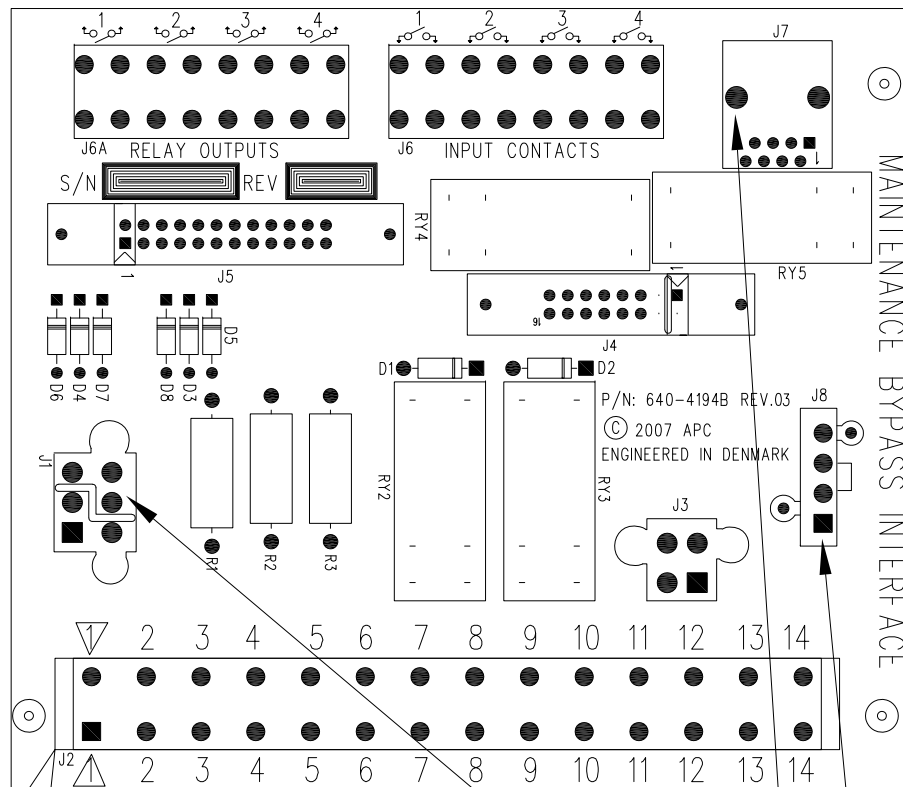
S.LEE

APPROVED: CLARSEN/S.WAGH/E.SILVA

REV: 3

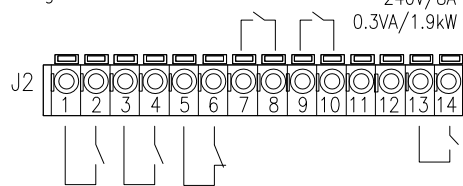
FIRST ANGLE PROJECTION

MBP Interface Board



MBP Interface Board wiring Details

Output Relays: 240V/8A
0.3VA/1.9kW

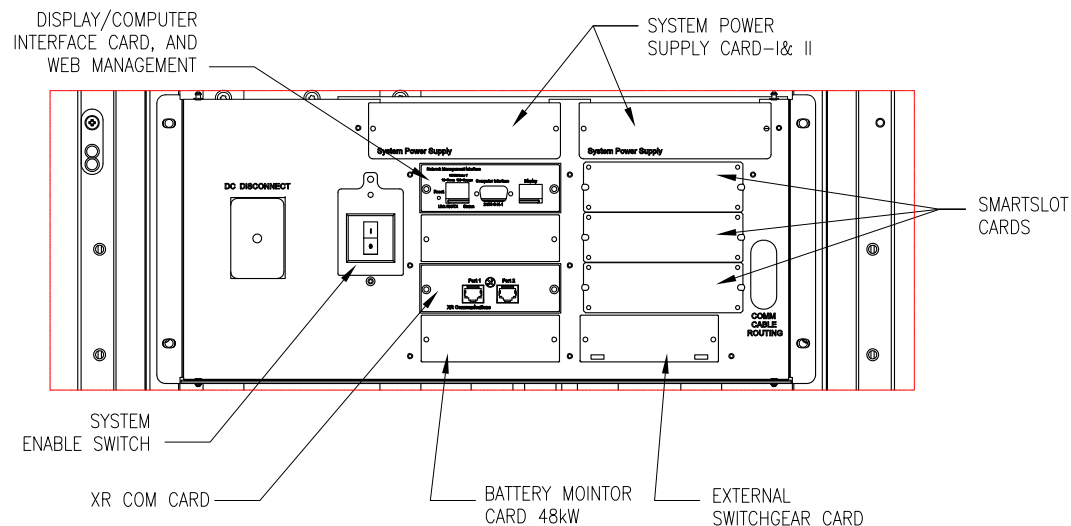


Input signals: Contact load: TTL

- 1/2 Q001 UPS Input Switch (N/O position)
- 3/4 Q002 UPS Output Switch (N/O position)
- 5/6 Q003 UPS service bypass Switch (N/C position)
- 7/8 OK to operate UPS Output Switch Q002
- 9/10 OK to operate Service Bypass Switch Q003
- 11/12 Not used
- 13/14 External Switch Gear present

J7, J1 AND J8 FOR USE ONLY WITH PX2 SOLUTIONS

DETAIL-A (SYSTEM INPUT/OUTPUT)



NOTES:

1. INSTALLATION MUST COMPLY ALL APPLICABLE NATIONAL AND LOCAL ELECTRICAL REGULATIONS
2. PLEASE REFER TO PRODUCT MANUAL FOR DETAILED INFORMATION.
3. ALL DIMENSIONS ARE IN MILLIMETERS. UNLESS OTHERWISE SPECIFIED.
- △ 4. 0.3VA - MINIMUM POWER CONSUMPTION OF THE RELAY.
1.9kW - MAXIMUM POWER THAT CAN FLOW THROUGH THE CONTACTS

THIS DRAWING AND SPECIFICATIONS HEREIN ARE THE PROPERTY OF SCHNEIDER ELECTRIC AND SHALL NOT BE COPIED, REPRODUCED OR USED IN WHOLE OR IN PART, AS THE BASIS FOR THE MANUFACTURE OR SALE OF ITEMS WITHOUT WRITTEN PERMISSION FROM SCHNEIDER ELECTRIC. THIS DRAWING IS BASED UPON LATEST AVAILABLE INFORMATION AND IS SUBJECT TO CHANGE WITHOUT NOTICE.

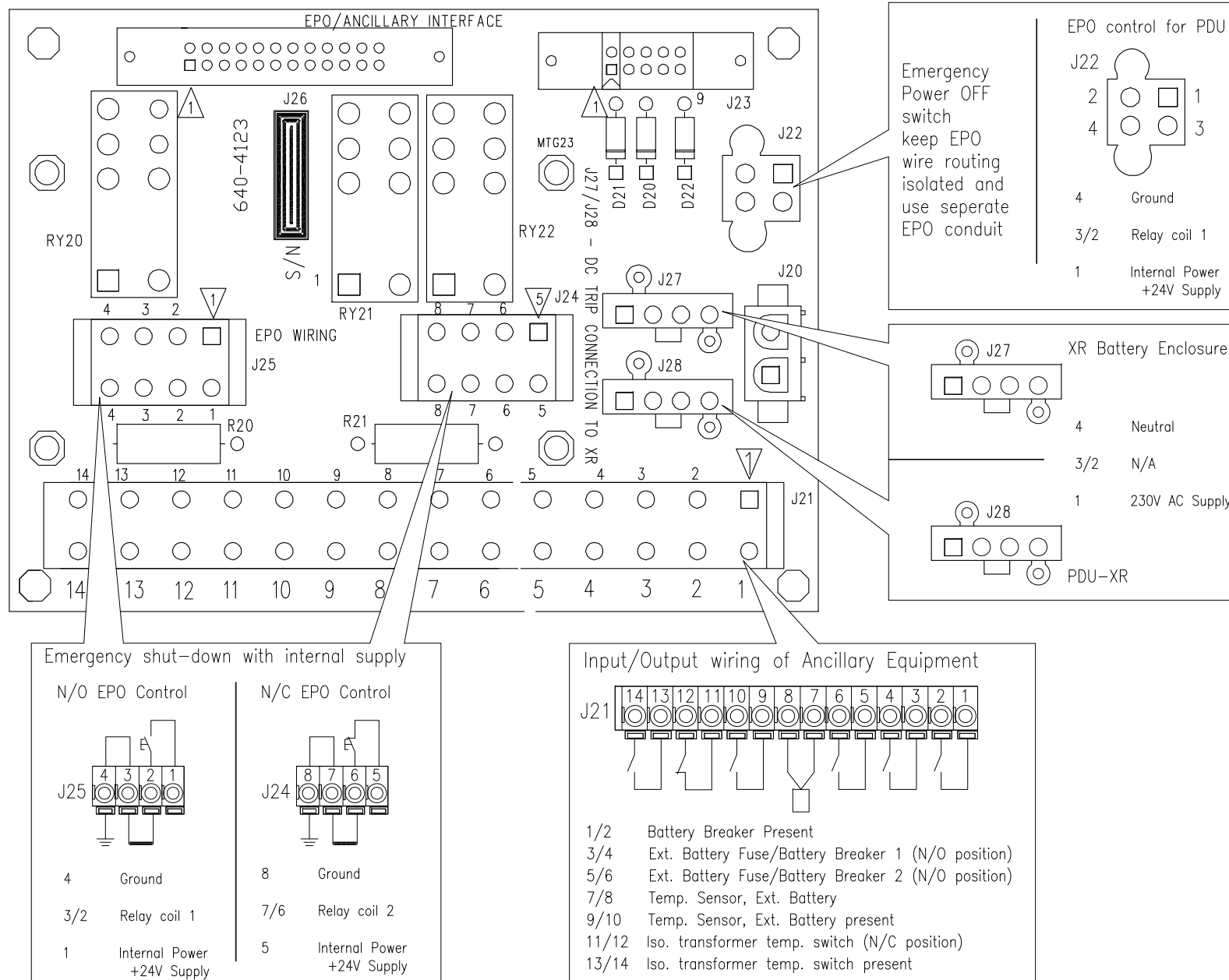
Schneider Electric

TITLE:
SYMMETRA PX 160
INPUT: 400V, 3PH
OUTPUT: 230V, 400V, 3PH
MBP INTERFACE BOARD WIRING DETAIL
PROJECT: SUBMITTAL DRAWINGS SHEET 6 OF 7

DWG NO: SYCF160KH-ME3
DRAWN: K.NAGENDRA
ENGINEER: S.LEE
APPROVED: C.LARSEN/S.WAGH/E.SILVA

REV. 2
10-DEC-09
10-DEC-09
10-DEC-09
FIRST ANGLE PROJECTION

EPO Wiring options



NOTES:

1. INSTALLATION MUST COMPLY ALL APPLICABLE NATIONAL AND LOCAL ELECTRICAL REGULATIONS
2. PLEASE REFER TO PRODUCT MANUAL FOR DETAILED INFORMATION.

THIS DRAWING AND SPECIFICATIONS HEREIN ARE THE PROPERTY OF SCHNEIDER ELECTRIC AND SHALL NOT BE COPIED, REPRODUCED OR USED IN WHOLE OR IN PART, AS THE BASIS FOR THE MANUFACTURE OR SALE OF ITEMS WITHOUT WRITTEN PERMISSION FROM SCHNEIDER ELECTRIC. THIS DRAWING IS BASED UPON LATEST AVAILABLE INFORMATION AND IS SUBJECT TO CHANGE WITHOUT NOTICE.

Schneider Electric

TITLE: SYMMETRA PX 160
INPUT: 400V, 3PH
OUTPUT: 230V, 400V, 3PH
EPO/ANCILLARY INTERFACE DETAILS
PROJECT: SUBMITTAL DRAWINGS SHEET 7 OF 7

DWG NO: SYCF160KH-ME4
DRAWN: C KRISHNA
ENGINEER: S.LEE
APPROVED: CLARSEN/S.WAGH/E.SILVA

REV: 1
FIRST ANGLE PROJECTION