

NOTES:

1. INSTALLATION MUST COMPLY WITH NATIONAL AND LOCAL ELECTRICAL REGULATIONS.
2. PLEASE REFER TO PRODUCT MANUALS FOR DETAILED INFORMATION.
3. ALL DIMENSIONS ARE IN MILLIMETERS, UNLESS OTHERWISE SPECIFIED.
4. NET WEIGHT OF THE UNIT IS 504 kg.
5. CABLE ENTRY IS REAR SIDE OF THE UNIT.
6. AIR FLOW AND SERVICE REQUIREMENTS, AS WELL AS MINIMUM CLEARANCE TO FIRE SUPPRESSION SYSTEMS SHOULD BE CONSIDERED WHEN LOCATING THE UNIT.

THIS DRAWING AND SPECIFICATIONS HEREIN ARE THE PROPERTY OF SCHNEIDER ELECTRIC AND SHALL NOT BE COPIED, REPRODUCED OR USED IN WHOLE OR IN PART, AS THE BASIS FOR THE MANUFACTURE OR SALE OF ITEMS WITHOUT WRITTEN PERMISSION FROM SCHNEIDER ELECTRIC. THIS DRAWING IS BASED UPON LATEST AVAILABLE INFORMATION AND IS SUBJECT TO CHANGE WITHOUT NOTICE.

Schneider Electric

TITLE: SYMMETRA LX 16kVA TOWER, XR
INPUT: 220/230/230VAC (1φ+N+G) 50/60Hz
OR 380/400/415VAC (3φ+N+G) 50/60Hz
OUTPUT: 220/230/240VAC 50/60Hz
MAIN MECHANICAL

PROJECT: SUBMITTAL DRAWINGS SHEET 1 OF 4

DWG NO: SYA16K16IXR-MM1

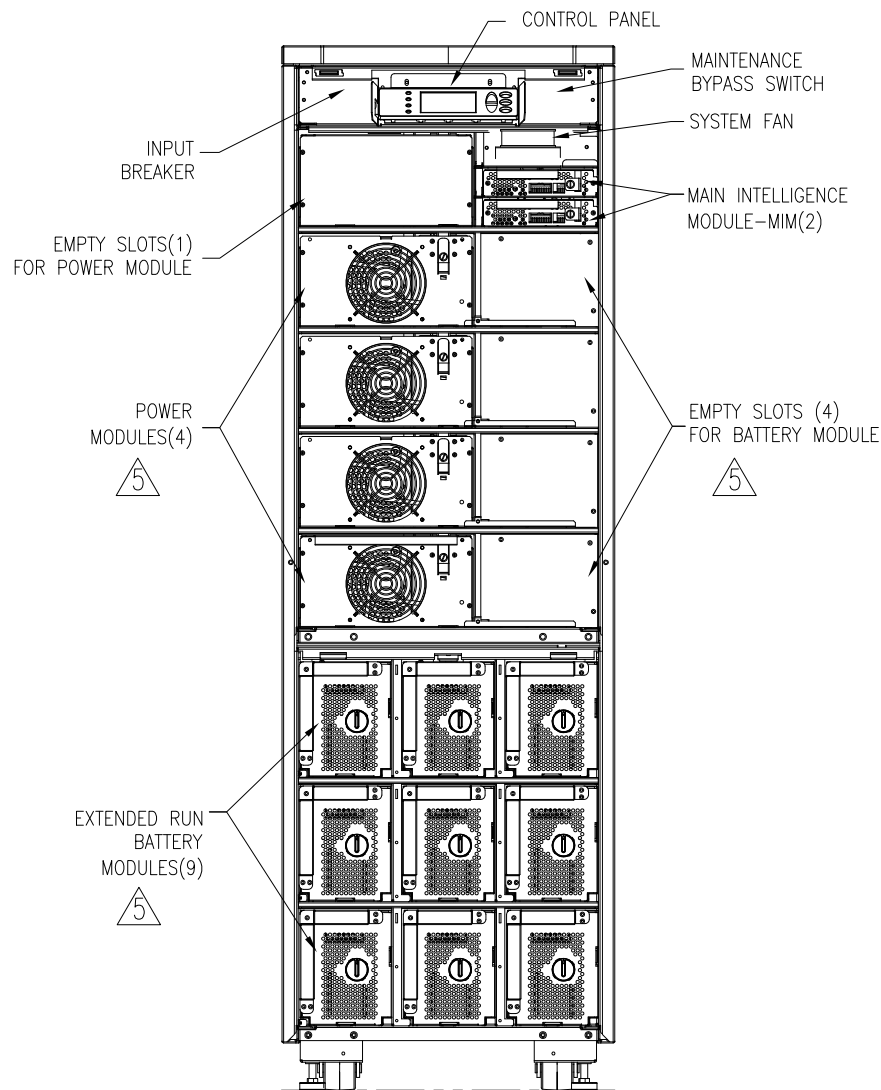
DRAWN: K NAGENDRA 04-SEP-08

ENGINEER: K WHITE 21-OCT-08

APPROVED: N WHITING 21-OCT-08

REV. 2

PROJ. ANGLE N/A

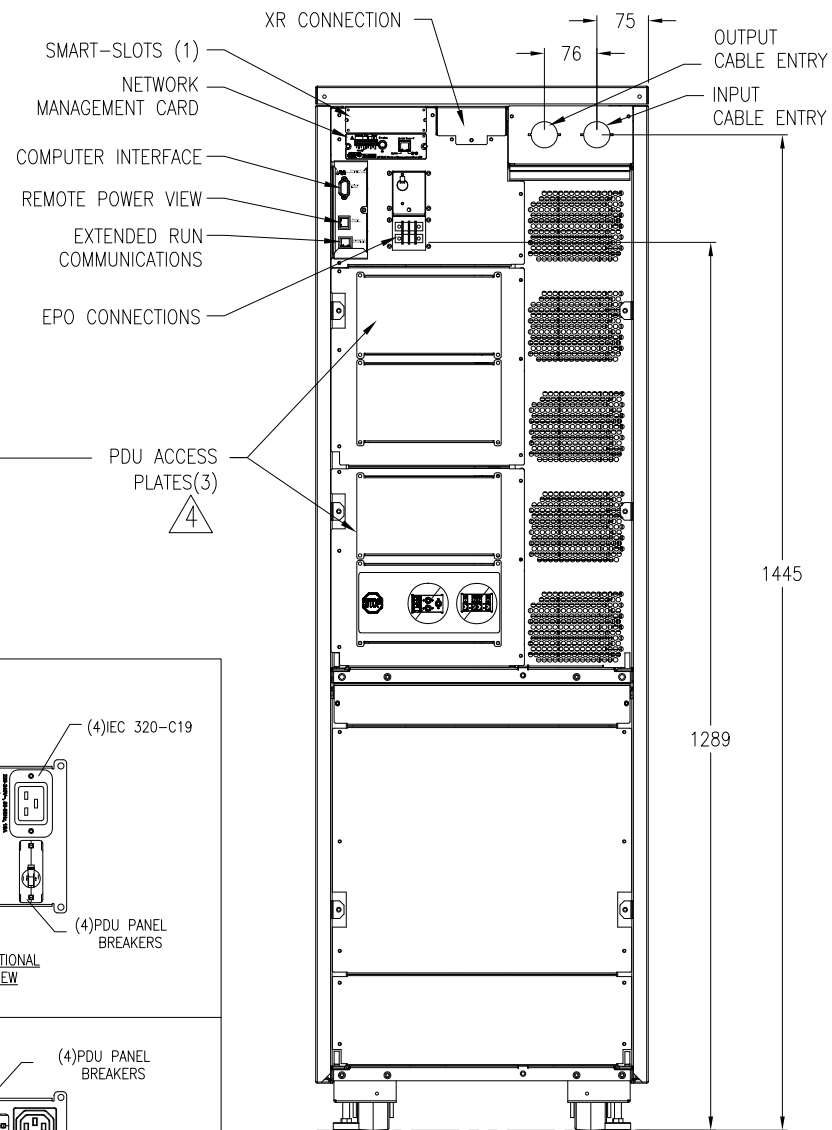


FRONT VIEW (DOOR REMOVED)

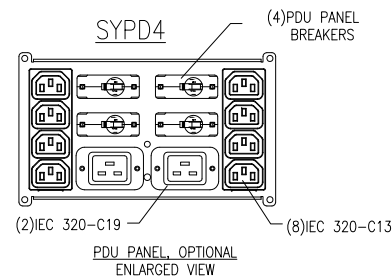
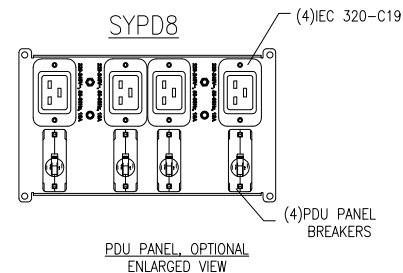
NOTES:

1. INSTALLATION MUST COMPLY WITH NATIONAL AND LOCAL ELECTRICAL REGULATIONS.
2. PLEASE REFER TO PRODUCT MANUALS FOR DETAILED INFORMATION.
3. ALL DIMENSIONS ARE IN MILLIMETERS, UNLESS OTHERWISE SPECIFIED.

- △ 4. UP TO THREE (3), OPTIONAL, SYMMETRA LX PDU PANELS CAN BE PURCHASED SEPARATELY AND INSTALLED TO PROVIDE FURTHER LOAD CONNECTIONS.
- △ 5. THE SYMMETRA LX, SKU NUMBER SYA16K16IXR, IS SHOWN IN A NON-REDUNDANT CONFIGURATION, HAVING FOUR (4) POWER MODULES (SYPM4KI) AND NINE (9) BATTERY MODULES (SYBT5), PROVIDING UP TO 16kVA POWER. FURTHER POWER MODULE (1-SYPM4KI) CAN BE PURCHASED SEPARATELY AND INSTALLED IN THE UNIT TO PROVIDE AN N+1 REDUNDANT SYSTEM, OFFERING A TOTAL SYSTEM POWER OF UP TO 16kVA WITH REDUNDANCY. THE RUNTIME CAN ALSO BE FURTHER EXTENDED BY THE PURCHASE AND INSTALLATION OF UP TO FOUR (4) ADDITIONAL BATTERY MODULES (SYBT5) IN THE MAIN UPS FRAME.



REAR VIEW



THIS DRAWING AND SPECIFICATIONS HEREIN ARE THE PROPERTY OF SCHNEIDER ELECTRIC AND SHALL NOT BE COPIED, REPRODUCED OR USED IN WHOLE OR IN PART, AS THE BASIS FOR THE MANUFACTURE OR SALE OF ITEMS WITHOUT WRITTEN PERMISSION FROM SCHNEIDER ELECTRIC. THIS DRAWING IS BASED UPON LATEST AVAILABLE INFORMATION AND IS SUBJECT TO CHANGE WITHOUT NOTICE.

Schneider Electric

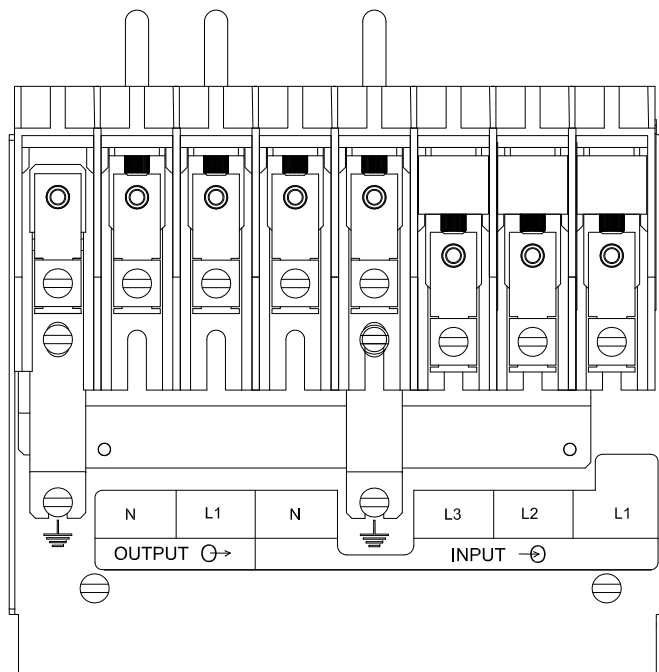
TITLE: SYMMETRA LX 16kVA TOWER, XR
INPUT: 220/230/240VAC (1φ+N+G) 50/60Hz
OR 380/400/415VAC (3φ+N+G) 50/60Hz
OUTPUT: 220/230/240VAC 50/60Hz
INTERNAL VIEWS

PROJECT: SUBMITTAL DRAWINGS SHEET 2 OF 4

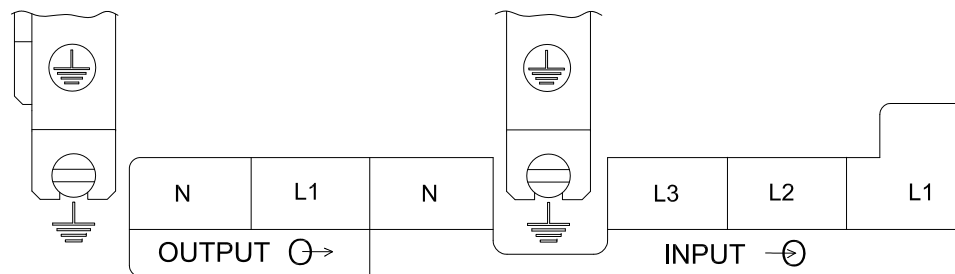
DWG NO: SYA16K16IXR-MM2

DRAWN: BALAMURUGAN
ENGINEER: K WHITE
APPROVED: N WHITING

REV. 2
04-SEP-08
21-OCT-08
21-OCT-08
PROJ. ANGLE
N/A

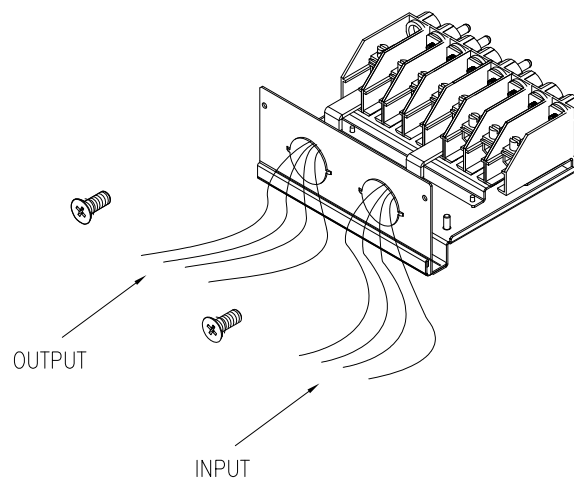


TOP VIEW, ENLARGED
INPUT/OUTPUT CONNECTIONS

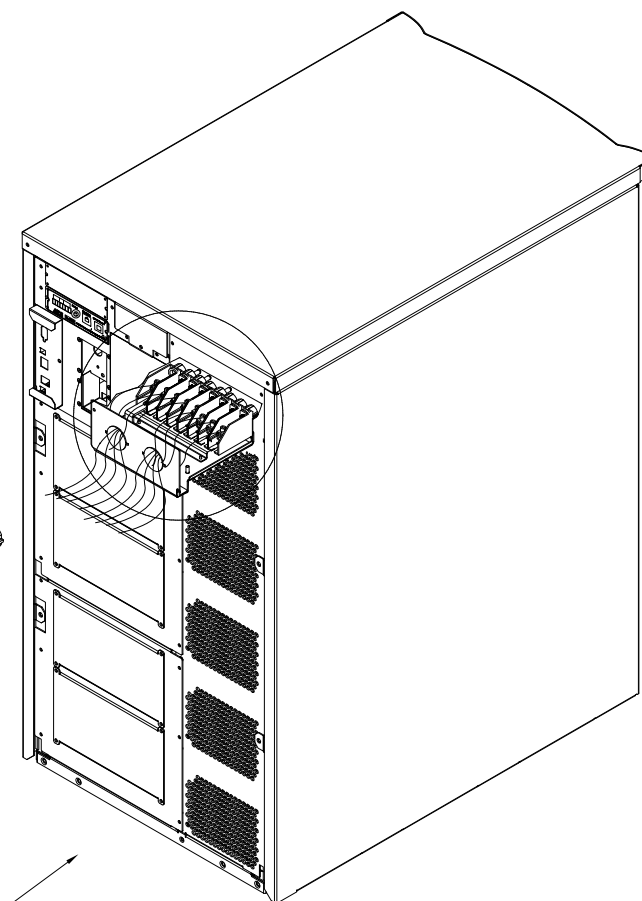


INPUT/OUTPUT CONNECTIONS

TOP VIEW
INPUT/OUTPUT CONNECTIONS
(REFER ENLARGED VIEW)



REAR VIEW
EXTENDED BATTERIES ARE NOT SHOWN



NOTES:

1. INSTALLATION MUST COMPLY WITH NATIONAL AND LOCAL ELECTRICAL REGULATIONS.
2. PLEASE REFER TO PRODUCT MANUALS FOR DETAILED INFORMATION.

THIS DRAWING AND SPECIFICATIONS HEREIN ARE THE PROPERTY OF SCHNEIDER ELECTRIC AND SHALL NOT BE COPIED, REPRODUCED OR USED IN WHOLE OR IN PART, AS THE BASIS FOR THE MANUFACTURE OR SALE OF ITEMS WITHOUT WRITTEN PERMISSION FROM SCHNEIDER ELECTRIC. THIS DRAWING IS BASED UPON LATEST AVAILABLE INFORMATION AND IS SUBJECT TO CHANGE WITHOUT NOTICE.

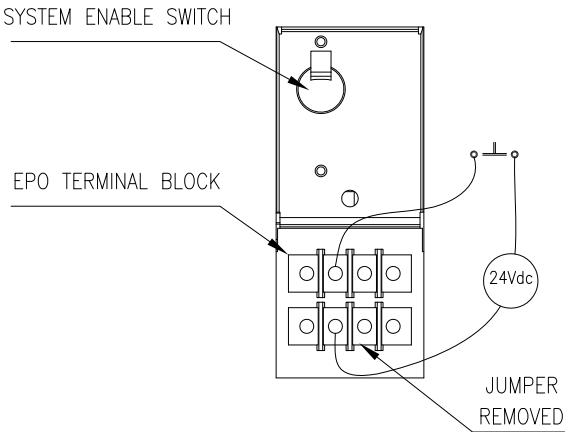
Schneider Electric

TITLE: SYMMETRA LX 16kVA TOWER, XR
INPUT: 220/230/230VAC (1Φ+N+G) 50/60Hz
OR 380/400/415VAC (3Φ+N+G) 50/60Hz
OUTPUT: 220/230/240VAC 50/60Hz
INPUT/OUTPUT CONNECTIONS

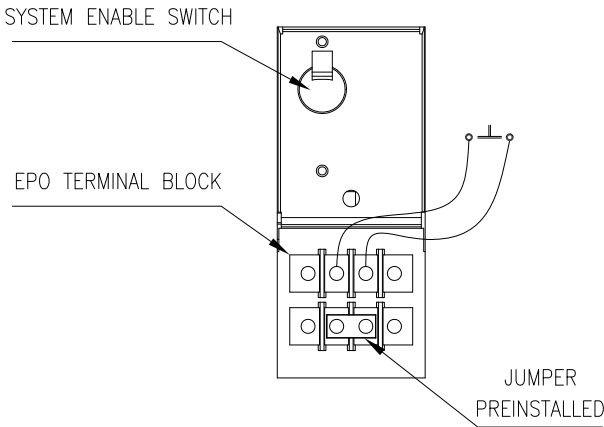
PROJECT: SUBMITTAL DRAWINGS SHEET 3 OF 4

DWG NO:	SYA16K16IXR-ME1	REV.	2
DRAWN:	K NAGENDRA	04-SEP-08	PROJ. ANGLE
ENGINEER:	K WHITE	21-OCT-08	N/A
APPROVED:	N WHITING	21-OCT-08	

IF REQUIRED: Connect the Remote Emergency Power Off (REPO) Circuit on the UPS



IF INSTALLATION USES
A SWITCH CONTACT
AND A 24Vdc POWER SUPPLY
EXTERNAL TO THE UPS



IF INSTALLATION USES
SINGLE EXTERNAL
SWITCH CONTACT.

NOTES:

- 1. INSTALLATION MUST COMPLY WITH NATIONAL AND LOCAL ELECTRICAL REGULATIONS.
- 2. PLEASE REFER TO PRODUCT MANUALS FOR DETAILED INFORMATION.

THIS DRAWING AND SPECIFICATIONS HEREIN ARE THE PROPERTY OF SCHNEIDER ELECTRIC AND SHALL NOT BE COPIED, REPRODUCED OR USED IN WHOLE OR IN PART, AS THE BASIS FOR THE MANUFACTURE OR SALE OF ITEMS WITHOUT WRITTEN PERMISSION FROM SCHNEIDER ELECTRIC. THIS DRAWING IS BASED UPON LATEST AVAILABLE INFORMATION AND IS SUBJECT TO CHANGE WITHOUT NOTICE.



TITLE: SYMMETRA LX 16kVA TOWER, XR
INPUT: 220/230/230VAC (1φ+N+G) 50/60Hz
OR 380/400/415VAC (3φ+N+G) 50/60Hz
OUTPUT: 220/230/240VAC 50/60Hz
EPO CONNECTIONS

DWG NO: SYA16K16IXR-ME2
DRAWN: K NAGENDRA
ENGINEER: K WHITE
APPROVED: N WHITING

REV. 2
04-SEP-08
21-OCT-08
21-OCT-08
PROJ. ANGLE
N/A