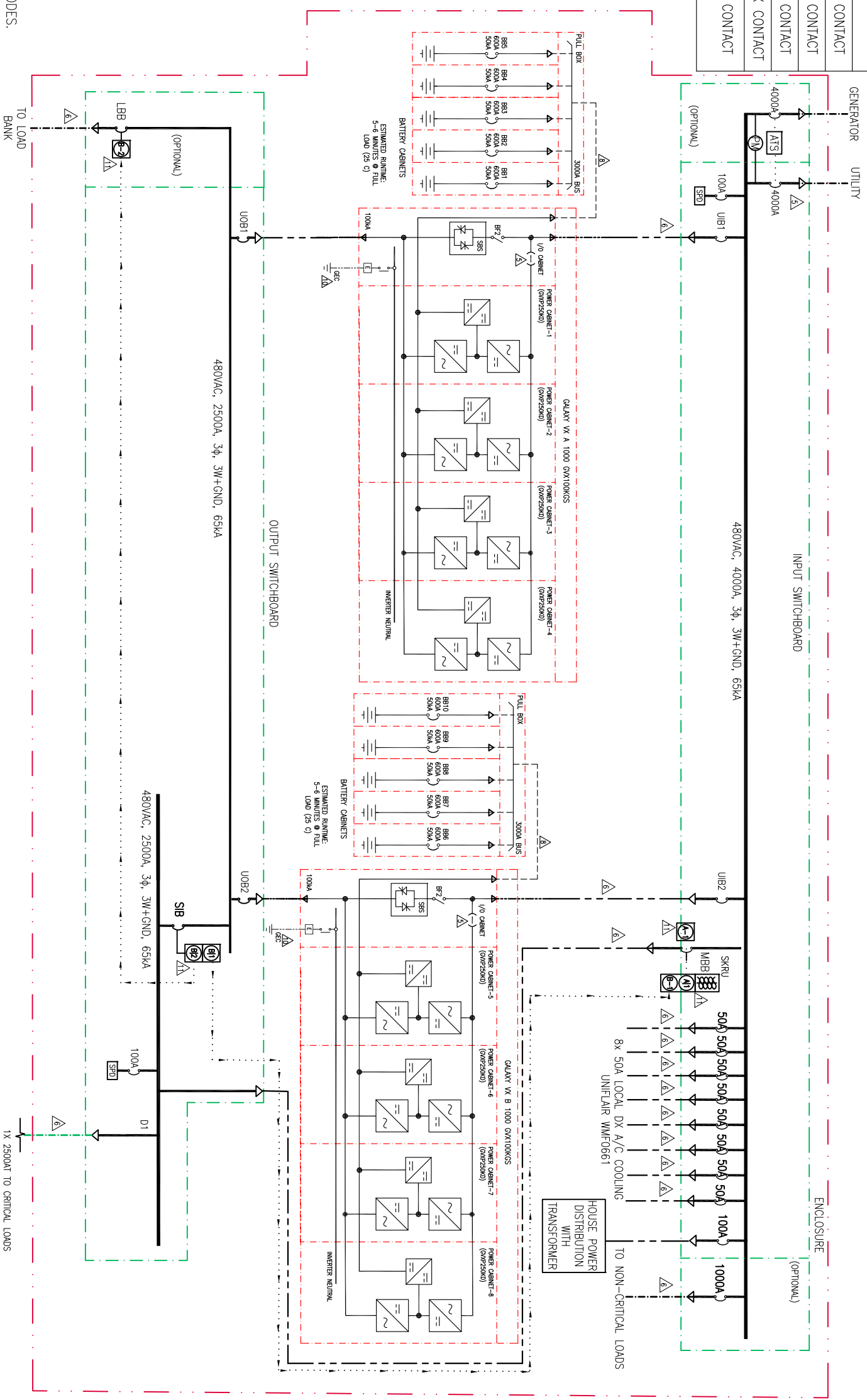
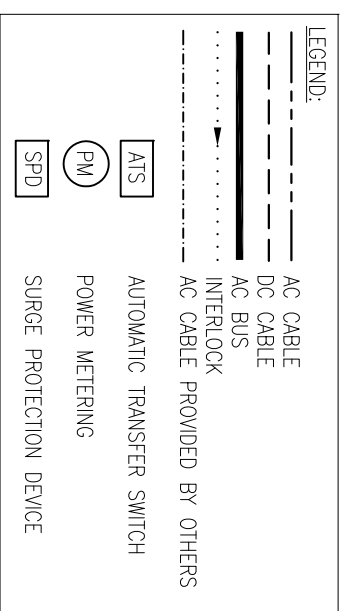


DEVICE	TRIP	TRIP SET	RMS SYM	TYPE	ACCESSORIES
UIB1, UIB2	1600AT	1.0TS	65kA	ICCB	24DC SHUNT TRIP, 3A/3B AUX CONTACT
SIB	2500AT	1.0TS	65kA	ICCB	24DC SHUNT TRIP, 3A/3B AUX CONTACT
LBB	2500AT	1.0TS	65kA	ICCB	24DC SHUNT TRIP, 3A/3B AUX CONTACT
MBB	2500AT	1.0TS	65kA	ICCB	1200C SHUNT TRIP, 3A/3B AUX CONTACT
UOB1, UOB2	1600AT	0.76TS	65kA	ICCB	24DC SHUNT TRIP, 3A/3B AUX CONTACT TYPE G RATING PLUG



- NOTES:**
- INSTALLATION SHALL COMPLY WITH ALL APPLICABLE LOCAL AND NATIONAL CODES.
 - PLEASE REFER TO PRODUCT MANUAL FOR DETAILS.
 - DRAWING DEPICTS POWER SYSTEM CONNECTIONS AND IS NOT REPRESENTATIVE OF PHYSICAL LAYOUT. PLEASE REFER TO MECHANICAL DRAWINGS FOR PHYSICAL LAYOUT.
 - ALL BREAKERS SHALL BE 100% CONTINUOUS DUTY RATED AND COORDINATED WITH REQUIRED SYSTEM SETTINGS AS DETAILED IN GALAXY VX INSTALLATION MANUAL. BREAKER SIZING IS BASED ON NOMINAL MAINS VOLTAGE.

Δ5. AC SOURCE SHALL BE 480VAC, 3-WIRE, WYE CONNECTED, 3Ø (CONTACT APC IF OTHER).

Δ6. AC CABLING SHALL BE 600V RATED, 3-WIRE + GROUND.

7. N/A.

Δ8. DC CABLING SHALL BE 600V RATED, 2-WIRE + GROUND.

9. BATTERY SIZING IS BASED ON A MAXIMUM 1 VOLT DROP PER HALF-STRING AT NOMINAL RATED DC CURRENT. CE SHALL ADJUST CABLE SIZE BASED ON INSTALLATION PARAMETERS.

Δ10. THIS SYSTEM SHALL BE INSTALLED AS A SEPARATELY DERIVED SYSTEM IN ACCORDANCE WITH LOCAL AND NATIONAL CODES. N.E.C. 250.30(d)(3). THE GROUNDING ELECTRODE CONDUCTOR (GEC) IS PROVIDED BY OTHERS.

Δ11. KEY INTERLOCKS WITH SKRU, SCHEME 39, BETWEEN MBB & UOB, ARE INCLUDED AS STANDARD WITH THE SYSTEM. KEY INTERLOCKS WITH SKRU, SCHEME 29, BETWEEN UOB & LBB, ARE OPTIONAL AND ARE NOT INCLUDED AS STANDARD WITH THE SYSTEM. LBB IS OPTIONAL AND NOT INCLUDED AS STANDARD WITH THE SYSTEM.

12. CABLE LUGS ARE PROVIDED BY OTHERS.

13. OPTIONAL: LITHIUM ION BATTERY SOLUTION AT 14 MINUTES.

THIS DRAWING IS NOT FOR CONSTRUCTION.

FILENAME/PATH:

REV	DESCRIPTION	DRWN	DATE	ENGR	DATE	APPR	DATE
01	CHG COOLING BRKKS FROM 20A TO 50A, IDENTITY COOLING UNITS, RELEASE	M. UHRHAN	01 FEB 18			M. TAVARES	01 FEB 18
E5	ADD TRIP SETTING TO DEVICE TABLE	M. UHRHAN	24 JAN 18				
E4	RM DRAWOUT SYMBOL FROM UTILITY AND GENERATOR BREAKERS	M. UHRHAN	15 JAN 18			M. TAVARES	15 JAN 18
E3	ADD DRAWOUT SYMBOL TO UTILITY AND GENERATOR BREAKERS	M. UHRHAN	09 JAN 18			B. ZIEGLER	09 JAN 18

REVISIONS

FILENAME/PATH:	DESCRIPTION:	DRWN:	DATE:	ENGR:	DATE:	APPR:	DATE:
01	CHG COOLING BRKKS FROM 20A TO 50A, IDENTITY COOLING UNITS, RELEASE	M. UHRHAN	01 FEB 18			M. TAVARES	01 FEB 18
E5	ADD TRIP SETTING TO DEVICE TABLE	M. UHRHAN	24 JAN 18				
E4	RM DRAWOUT SYMBOL FROM UTILITY AND GENERATOR BREAKERS	M. UHRHAN	15 JAN 18			M. TAVARES	15 JAN 18
E3	ADD DRAWOUT SYMBOL TO UTILITY AND GENERATOR BREAKERS	M. UHRHAN	09 JAN 18			B. ZIEGLER	09 JAN 18

THIS DRAWING AND SPECIFICATIONS HEREIN ARE THE PROPERTY OF SCHNEIDER ELECTRIC AND SHALL NOT BE COPIED, REPRODUCED OR USED IN WHOLE OR IN PART, AS THE BASIS FOR THE MANUFACTURE OR SALE OF ITEMS WITHOUT WRITTEN PERMISSION FROM SCHNEIDER ELECTRIC. THIS DRAWING IS BASED UPON LATEST AVAILABLE INFORMATION AND IS SUBJECT TO CHANGE WITHOUT NOTICE.



TITLE:	DWG NO.:	REV:
2000 kW GALAXY Vx ENCLOSURE	2000KW Vx POWER MODULE 4000A BUS	01
INPUT: 480VAC, 3Ø, DUAL MAIN		
OUTPUT: 480VAC, 3Ø, 2000KW		
SINGLE-LINE DIAGRAM 4000A BUS		
PROJECT: 2000KW GW PH 4000A BUS		
SHEET: 1 OF 1		
ENGINEER:	M. UHRHAN	01 FEB 18
APPROVED:	B. ZIEGLER	01 FEB 18