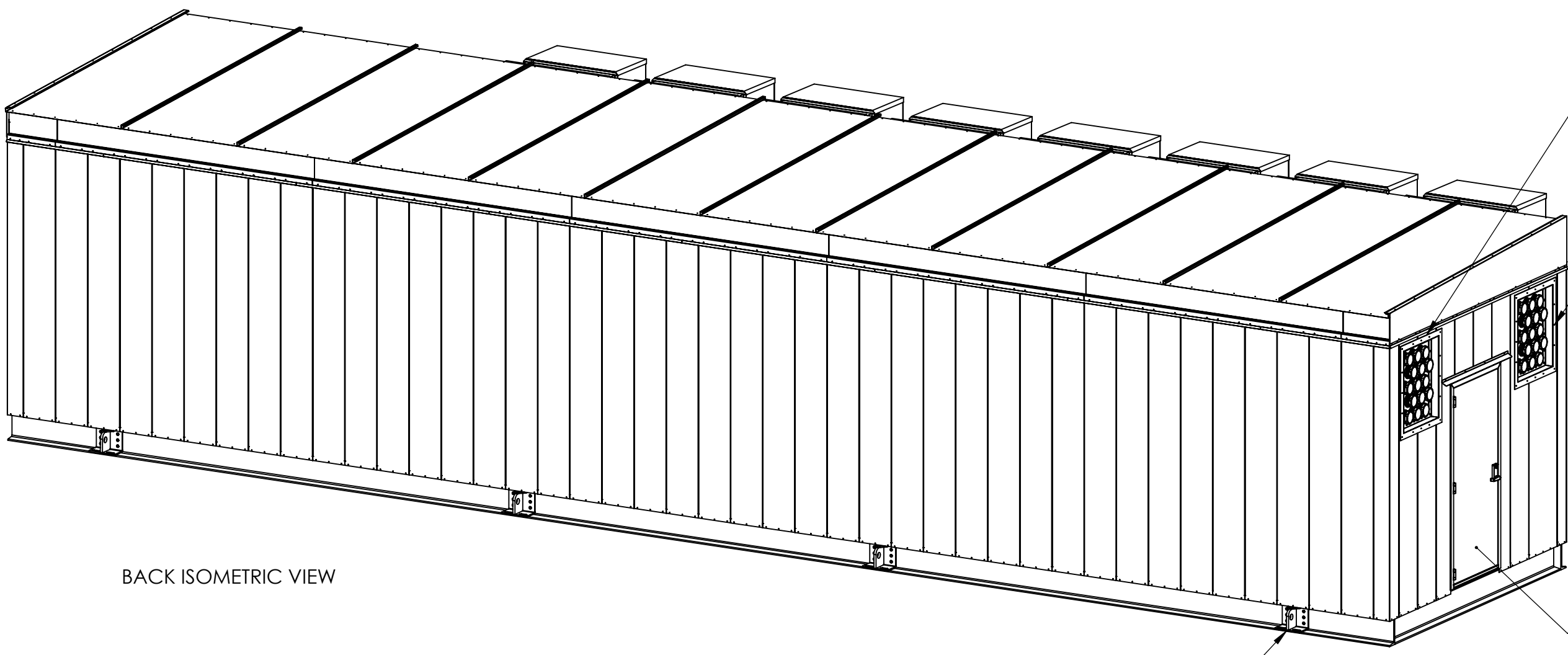


A B C D E F G H J K L M

1  
2  
3  
4  
5  
6  
7  
8

1  
2  
3  
4  
5  
6  
7  
8

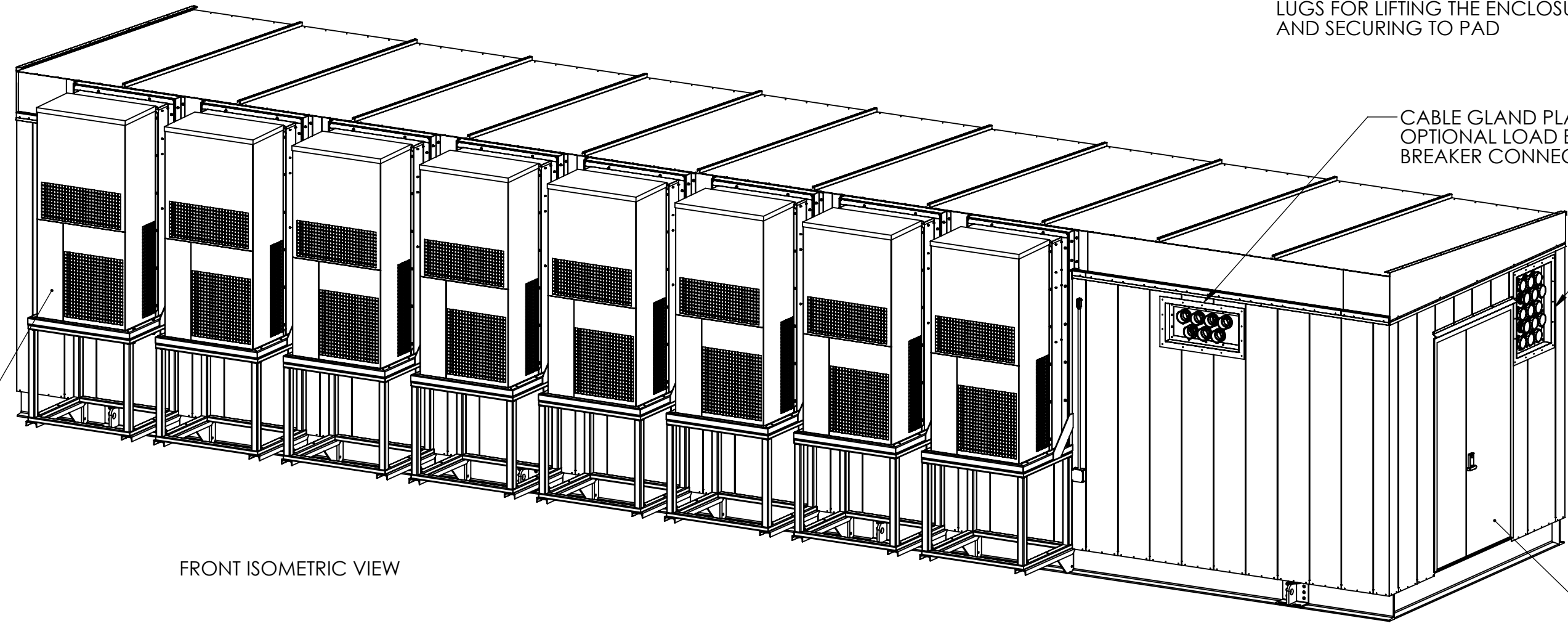


CABLE GLAND PLATE: POWER INPUT FROM UTILITY

CABLE GLAND PLATE: POWER INPUT FROM GENERATOR

SINGLE DOOR FOR PERSONNEL ACCESS 36" WIDE X 84" TALL

LUGS FOR LIFTING THE ENCLOSURE AND SECURING TO PAD

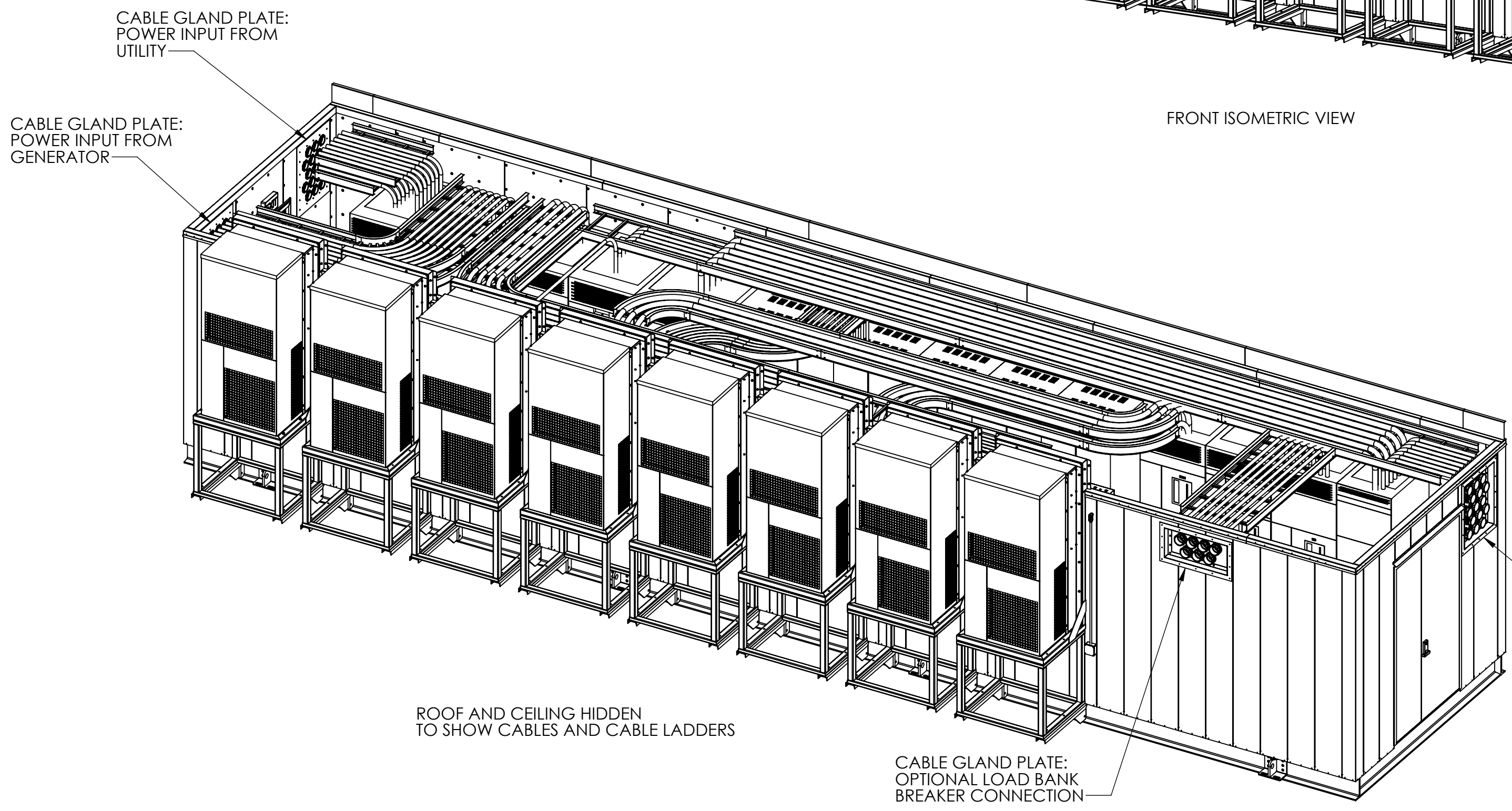


WALL MOUNT A/C UNITS

CABLE GLAND PLATE: OPTIONAL LOAD BANK BREAKER CONNECTION

CABLE GLAND PLATE: CRITICAL AND NON-CRITICAL POWER OUTPUT TO BUILDING

DOUBLE DOORS FOR EQUIPMENT ACCESS 60" WIDE X 96" TALL



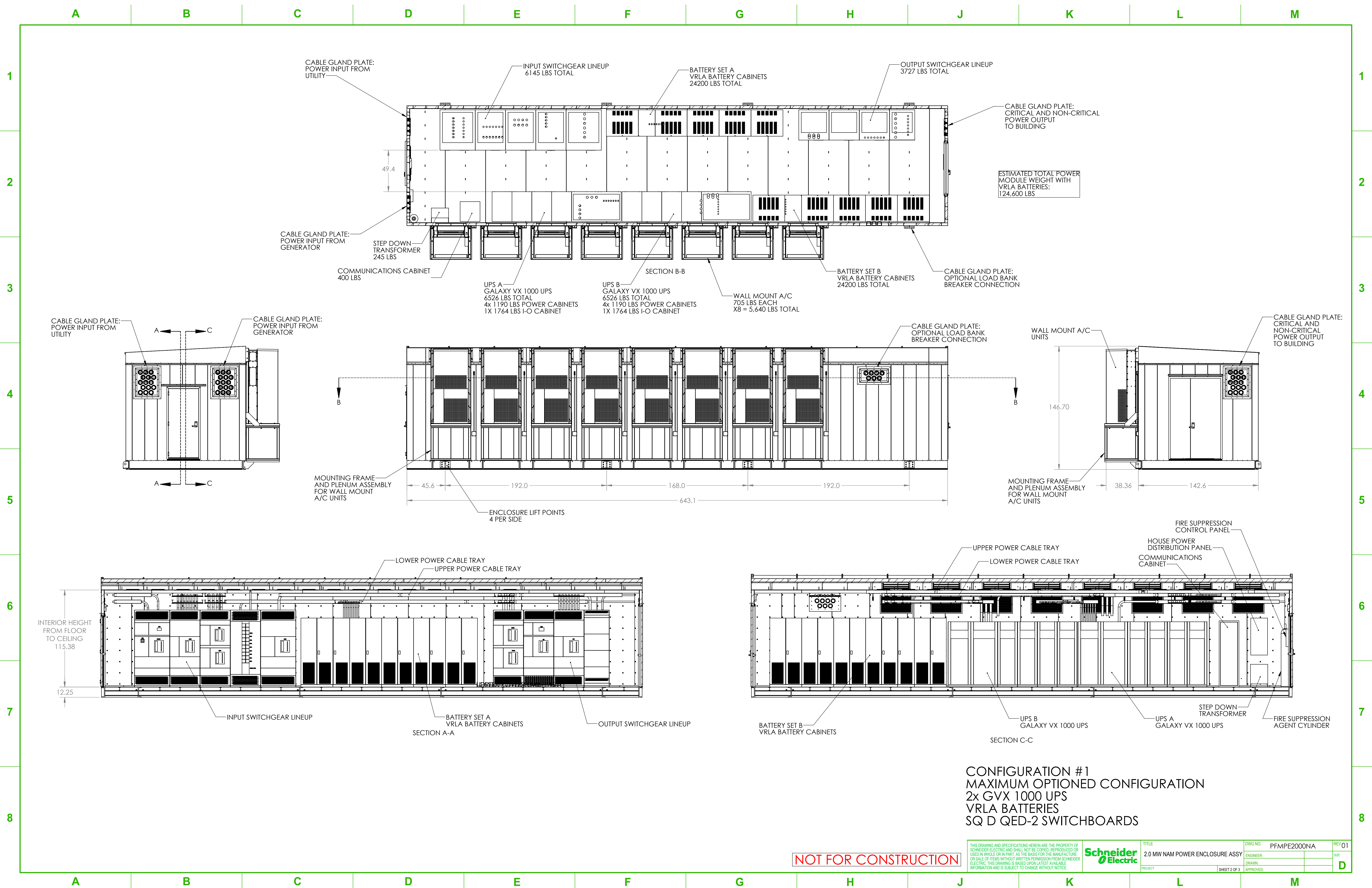
CONFIGURATION #1  
 MAXIMUM OPTIONED CONFIGURATION  
 2x GVX 1000 UPS  
 VRLA BATTERIES  
 SQ D QED-2 SWITCHBOARDS

NOT FOR CONSTRUCTION

<small>THIS DRAWING AND SPECIFICATIONS HEREIN ARE THE PROPERTY OF SCHNEIDER ELECTRIC AND SHALL NOT BE COPIED, REPRODUCED OR USED IN WHOLE OR IN PART, AS THE BASIS FOR THE MANUFACTURE OR SALE OF ITEMS WITHOUT WRITTEN PERMISSION FROM SCHNEIDER ELECTRIC. THIS DRAWING IS BASED UPON LATEST AVAILABLE INFORMATION AND IS SUBJECT TO CHANGE WITHOUT NOTICE.</small>		TITLE	DWG NO.	REV
		2.0 MW NAM POWER ENCLOSURE ASSY	PFMPE2000NA	01
		ENGINEER: L. PERRY		
PROJECT	APPROVED:			

A B C D E F G H J K L M





**CONFIGURATION #1**  
**MAXIMUM OPTIONED CONFIGURATION**  
 2x GVX 1000 UPS  
 VRLA BATTERIES  
 SQ D QED-2 SWITCHBOARDS

**NOT FOR CONSTRUCTION**

<small>THIS DRAWING AND SPECIFICATIONS HEREIN ARE THE PROPERTY OF SCHNEIDER ELECTRIC AND SHALL NOT BE COPIED, REPRODUCED OR USED IN WHOLE OR IN PART, AS THE BASIS FOR THE MANUFACTURE OR SALE OF ITEMS WITHOUT WRITTEN PERMISSION FROM SCHNEIDER ELECTRIC. THIS DRAWING IS BASED UPON LATEST AVAILABLE INFORMATION AND IS SUBJECT TO CHANGE WITHOUT NOTICE.</small>	<b>Schneider Electric</b>	TITLE 2.0 MW NAM POWER ENCLOSURE ASSY	DWG NO. PFMPE2000NA	REV 01
		PROJECT	ENGINEER	DATE
		SHEET 2 OF 3	DRAWN	APPROVED

