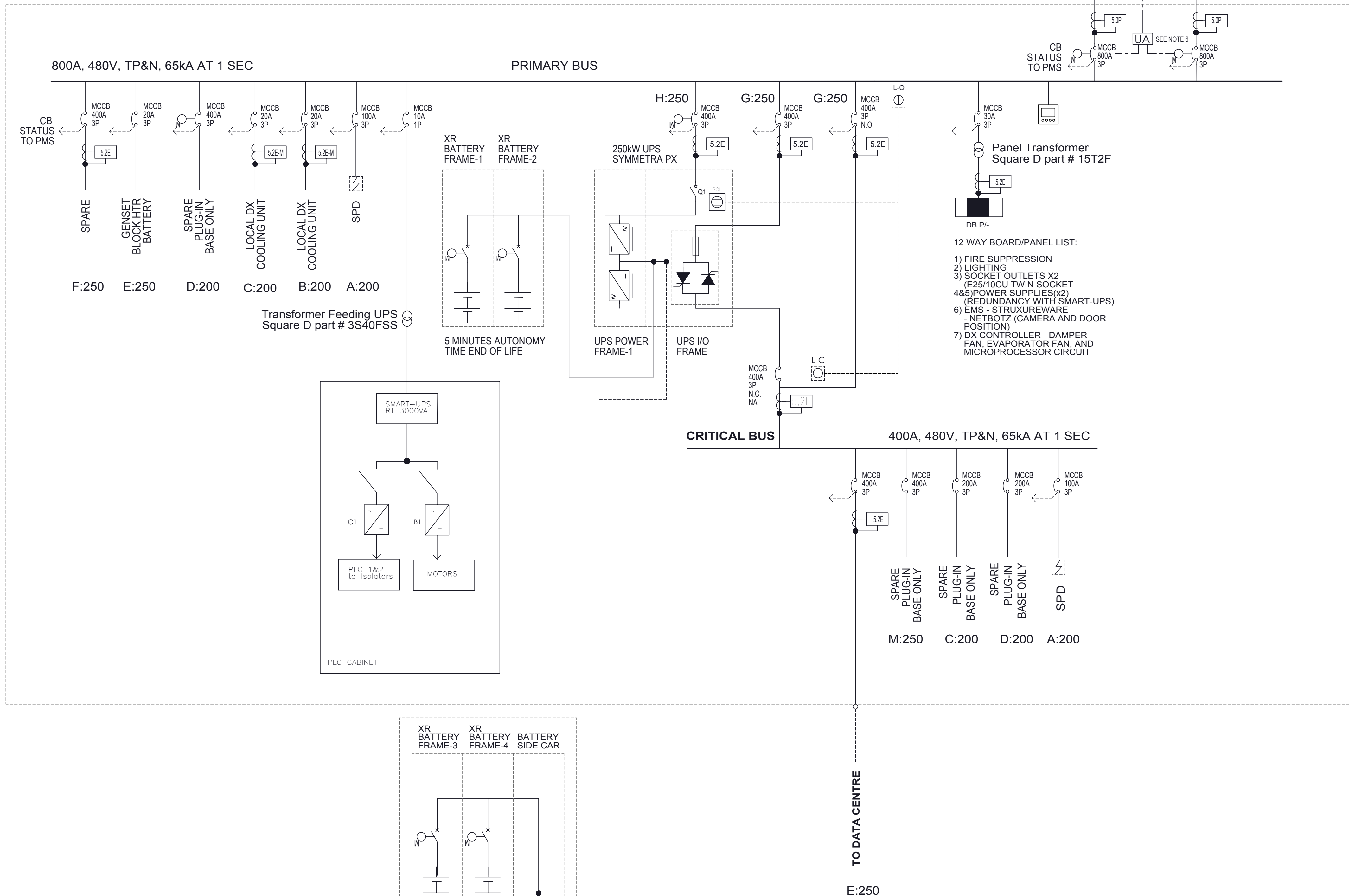


POWER MODULE



LEGEND

- MOULDED CASE CIRCUIT BREAKER
- SWITCH DISCONNECTER (ON LOAD)
- SURGE PROTECTIVE DEVICE
- MOTOR OPERATED (OR OPERATOR)
- MICROLOGIC TRIP UNIT
- ION7650 POWER QUALITY METER
- THREE-PHASE MOTOR
- FUSE
- BATTERY
- RECTIFIER
- INVERTER
- TP&N DISTRIBUTION BOARD
- TRANSFORMER
- EMERGENCY POWER OFF BUTTON
- THYRISTOR
- SOLENOID KEY RELEASE UNIT
- CASTELL LOCK (LOCKED OPEN, KEY CAPTIVE)
- CASTELL LOCK (LOCKED CLOSED, KEY REMOVED)
- REMOTE TERMINALS (ACCESSIBLE FROM OUTSIDE MODULE)
- LINK
- NA** NON AUTOMATIC
- N.O./N.C.** NORMALLY OPEN/NORMALLY CLOSED
- ION METER

NOTES:

1. ALL CIRCUIT BREAKERS TO INCORPORATE ELECTRONIC TRIP UNITS FROM THE MICROLOGIC RANGE.
2. BREAKER CAPACITY (Icu) OF ALL CIRCUIT BREAKERS TO BE >65kA RMS.
3. PROVIDE AUXILIARY CONTACTS FOR INTERFACE TO SCADA SYSTEM ON ALL CIRCUIT BREAKERS. OF1, OF2, SD, SDE. LOAD BANK MCCB TO INCLUDE MX SHUNT TRIP.
4. INCLUDE TERMINALS FOR INCOMING / OUTGOING COMMUNICATIONS & SCADA WIRING.
5. INCLUDE ALL 24V DC SUPPLIES.
6. INCLUDE EPO TRIPPING FACILITY IN EACH MODULE.
7. INCLUDE THERMOGRAPHIC FACILITIES IN ALL SWITCHBOARDS.
8. EMPTY
9. ALL ACB'S TO BE FIXED TYPE. ALL MCCB'S TO BE PLUGGABLE.
10. ALL SWITCHBOARDS TO BE ARRANGED FOR TOP AND BOTTOM CABLE ENTRY/EXIT.

REV	DESCRIPTION	DRWN	DATE	ENGR	DATE	APPR	DATE
08	REMOVE SWITCHBOARD FORM REQUIREMENT, NOTE 8	L.M.	10FEB14	BZ			
07	MOVE AUX PANEL TO PRIMARY BUS, CHANGE PLC AREA	L.M.	22JAN14	BZ			
06	TYPO CORRECTION, CHANGED TO NUMERIC REV FOR CONSISTENCY WITH OTHER ONE LINE DRAWINGS	L.P.	19JUL13	BZ			
E	ADD SKRU	L.M.	10APR13	BZ			
D	ADD TRANSFER CONTROLLER, ADD ION METER, CLARIFY KEYLOCK SCHEME	L.M.	06MAR13	BZ			
C	DEL 140A SPARE, ADD 20P TO GENSET, DEL POWER QUAL METER, DEL 300kVA XFMR, CHANGED KEYLOCK LOCATIONS, CHGD SOME TRIP UNIT VALUES	L.M.	27FEB13	BZ			
B	CHANGED POLES ON ALL BREAKERS FROM 4P TO 3P	DP	01-18-13	BZ	01-18-13		
A	PRELIMINARY ISSUE						
REV	DESCRIPTION	DRWN	DATE	ENGR	DATE	APPR	DATE

THIS DRAWING AND SPECIFICATIONS HEREIN ARE THE PROPERTY OF SCHNEIDER ELECTRIC AND SHALL NOT BE COPIED, REPRODUCED OR USED IN WHOLE OR IN PART, AS THE BASIS FOR THE MANUFACTURE, OR SALE OF ITEMS WITHOUT WRITTEN PERMISSION FROM SCHNEIDER ELECTRIC. THIS DRAWING IS BASED UPON LATEST AVAILABLE INFORMATION AND IS SUBJECT TO CHANGE WITHOUT NOTICE.

Schneider Electric

TITLE: 250kW NAM POWER MODULE
Electrical Single Line Diagram

DWG NO. PFMP0250NA One Line
ENGINEER: D. Ponte
DRAWN: B. Ziegler
APPROVED: B. Ziegler

REV: 08
DATE: 01-18-13
SHEET 1 OF 1