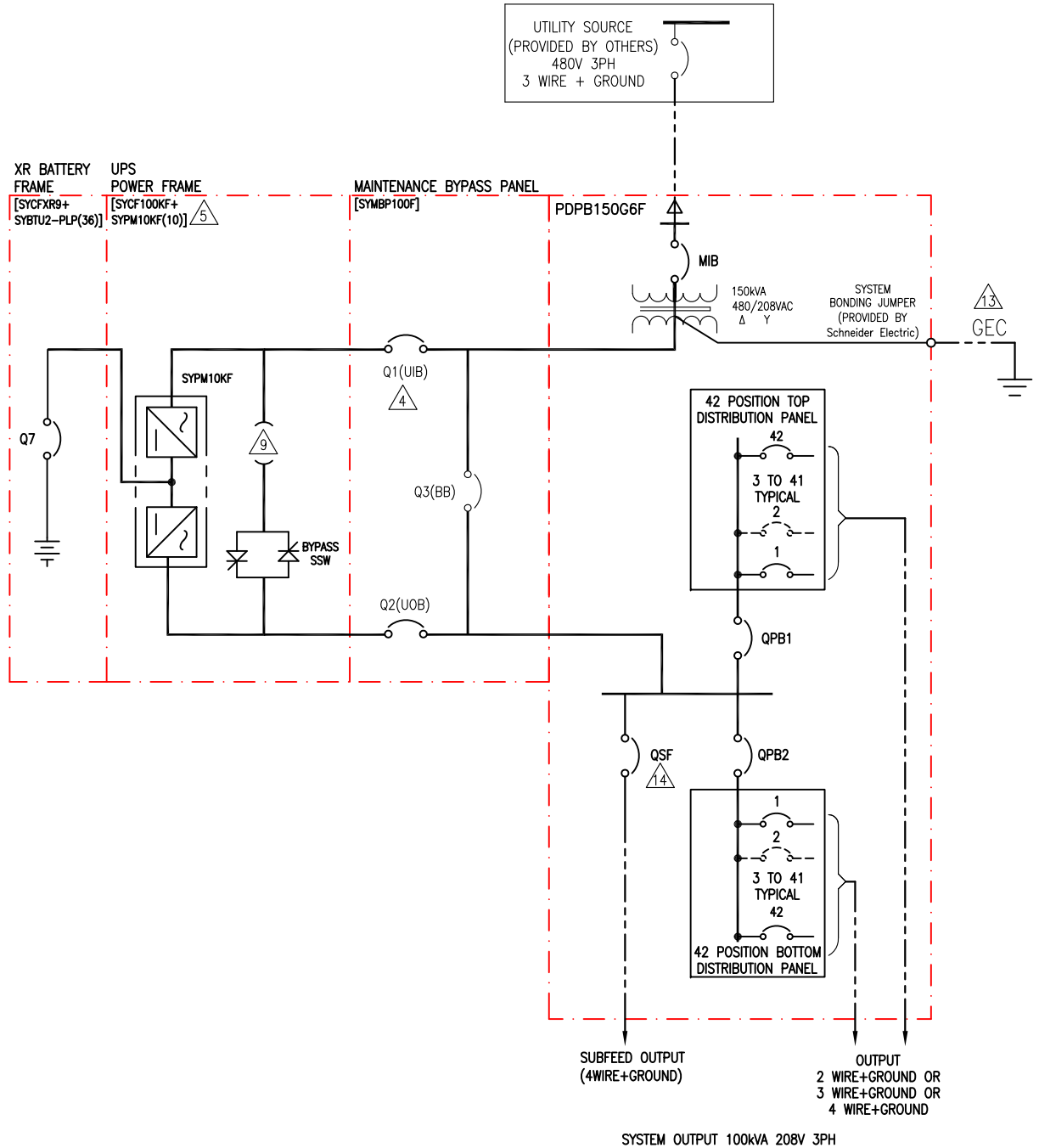


DEVICE RATING					
DEVICE	RATING	TYPE	MAKE	MODEL	ACCESSORIES
Q1	600A, 480/277VAC	SEE NOTE	Schneider Electric	LJF44600WU33X	1A/1B AUX CONTACTS
Q2	400A, 480/277VAC	4P MCCB	Schneider Electric	LJF44400WU33X	1A/1B AUX CONTACTS
Q3	400A, 480/277VAC	4P MCCB	Schneider Electric	LJF44400WU33X	1A/1B AUX CONTACTS
Q7	320A, 500VDC	3P DC BREAKER	ABB	T5N320TWS4	1-SHUNT TRIP (110-125VAC/DC) 1 - AUX CONTACT (1 FORM C + 1 BA)
MIB	250A, 600VAC	3P MCCB	Schneider Electric	NJS36250CU33XE	---
QPB1/ QPB2	250A, 600VAC	3P MCCB	Schneider Electric	NJGF36250CU33XE	---
QSF	400A, 600VAC	3P MCCB	Schneider Electric	NLGF36400CU33X	---

**LEGEND:**  
 - - - - - AC CABLE - PROVIDED BY OTHERS

**NOTES:**

- INSTALLATION SHALL COMPLY WITH ALL APPLICABLE NATIONAL, STATE AND LOCAL CODES
- REFER TO PRODUCT DOCUMENTATION FOR ADDITIONAL DETAILS PRIOR TO INSTALLATION AND SITE PREPARATION WORK.
- DRAWING DEPICTS POWER SYSTEM CONNECTIONS AND IS NOT REPRESENTATIVE OF PHYSICAL LAYOUT, PLEASE REFER TO MECHANICAL DRAWINGS FOR PHYSICAL LAYOUT.
- THE Q1 BREAKER (MODEL NUMBER LJF44600WU33X) FUNCTIONS AS A 3 POLE DISCONNECT. THE UTILITY SOURCE NEUTRAL (N) IS ALWAYS CONNECTED TO THE UPS AND THE INPUT TO THE 4 POLE Q3. THE PREMISES WIRING FOR INPUT INCLUDING NEUTRAL WILL LAND ON THE TOP OF Q1.
- MAXIMUM AVAILABLE FAULT CURRENT IS 30KAIC.
- AC SOURCE TO BE 480VAC 3PH 3 WIRE + GROUND. (CONTACT SCHNEIDER ELECTRIC IF OTHER).
- ALL AC POWER CABLING TO BE 600V RATED
- CABLE LUGS ARE NOT REQUIRED, PREMISES WIRING CAN LAND DIRECTLY ON TOP OF Q1 AND BOTTOM OF Q2, SEE INSTALLATION MANUAL AND MECHANICAL SUBMITTAL DRAWINGS FOR ADDITIONAL DETAILS.
- APPLICABLE FOR SINGLE MAINS CONFIGURATION ONLY.
- THIS DRAWING SHOWS MINIMUM NUMBER OF XR BATTERY FRAMES.  
MAXIMUM (4) XR BATTERY FRAMES CAN BE BAYED TO UPS.
- RACK FRAME AND SKINS ARE ELECTRICALLY CONNECTED AND TIED TO CHASSIS GROUND.
- TRANSFORMER BASE IS GROUNDED THROUGH RACK FRAME.
- THE GROUNDING ELECTRODE CONDUCTOR (GEC) IS PROVIDED BY OTHERS.
- SEE INSTALLATION MANUAL FOR RECOMMENDED SETTINGS.



THIS DRAWING AND SPECIFICATIONS HEREIN ARE THE PROPERTY OF SCHNEIDER ELECTRIC AND SHALL NOT BE COPIED, REPRODUCED OR USED IN WHOLE OR IN PART, AS THE BASIS FOR THE MANUFACTURE OR SALE OF ITEMS WITHOUT WRITTEN PERMISSION FROM SCHNEIDER ELECTRIC. THIS DRAWING IS BASED UPON LATEST AVAILABLE INFORMATION AND IS SUBJECT TO CHANGE WITHOUT NOTICE.



**TITLE:** SYMMETRA PX 100 MBP WITH CONFIGURABLE POWER DISTRIBUTION  
 INPUT: 480V 3PH, SINGLE MAINS  
 OUTPUT: 100kVA, 208V  
 SYSTEM ONE LINE DIAGRAM

**PROJECT:** SUBMITTAL DRAWINGS **SHEET 1 OF 1**

**DWG NO:** SY100K100FMBP-PDPB150G6F-SD

**DRAWN:** C. KRISHNA/JAYAPRAKASH 05-JUN-15

**ENGINEER:** A WARNER 05-JUN-15

**APPROVED:** B SHERIDAN 05-JUN-15

**REV.** 1

**ANGLE PROJECTION**  
 N.A.

SYSTEM OUTPUT 100KVA 208V 3PH

SUBFEED OUTPUT  
 (4WIRE+GROUND)

OUTPUT  
 2 WIRE+GROUND OR  
 3 WIRE+GROUND OR  
 4 WIRE+GROUND