

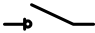


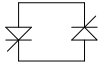


## Symmetra PX 160kW 400V without PDU Package.

Sheet No.	Component /Detail	Description
1	Drawing Guide	Symmetra PX 32-160kW 400V Top/Bottom Feed Drawing guide
2-5	Solution	Symmetra PX 32-160kW 400V Top/Bottom Feed
6	UPS	Symmetra PX 32-160kW 400V UPS Internal View
7	Battery	Symmetra PX 32-160kW 400V Battery Internal View
8	MBP Interface Board	Symmetra PX 32-160kW 400V MBP Interface Board Wiring Details
9	EPO WIRING	Symmetra PX 32-160kW 400V MBP EPO Wiring Details
10	System One Line Diagram	Symmetra PX 32-160kW 400V One Line Diagram

LEGEND			
SYMBOL	DESCRIPTION	SYMBOL	DESCRIPTION
	CIRCUIT BREAKER		CONVERTER
	SWITCH DISCONNECT		INVERTER
	BATTERY MODULE		BYPASS SSW

THIS DRAWING AND SPECIFICATIONS HEREIN ARE THE PROPERTY OF SCHNEIDER ELECTRIC AND SHALL NOT BE COPIED, REPRODUCED OR USED IN WHOLE OR IN PART, AS THE BASIS FOR THE MANUFACTURE OR SALE OF ITEMS WITHOUT WRITTEN PERMISSION FROM SCHNEIDER ELECTRIC. THIS DRAWING IS BASED UPON LATEST AVAILABLE INFORMATION AND IS SUBJECT TO CHANGE WITHOUT NOTICE.

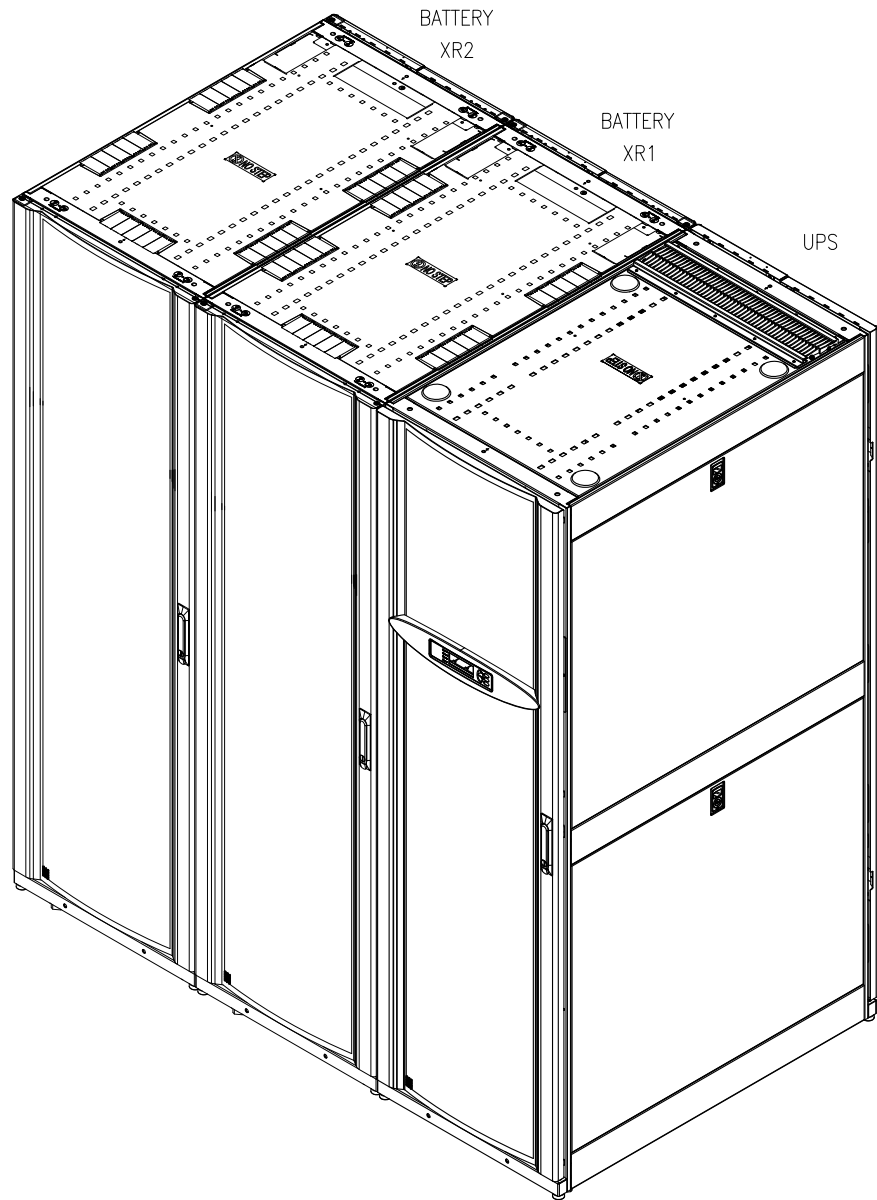
**Schneider Electric**

TITLE: SYMMETRA PX 160  
Input: 400V AC 3PH SINGLE/DUAL MAINS  
Output: 400/230V AC & 400V AC 3PH 32-160kW  
DRAWING GUIDE

DWG NO:	SY32K160H		REV.	1
DRAWN:	BALA	1-JUL-19	FIRST	ANGLE
ENGINEER:	J WOLSKI	1-JUL-19	PROJECTION	
APPROVED:	J WOLSKI	1-JUL-19		

PROJECT: DRAWINGS SHEET 1 OF 11

ISOMETRIC VIEW



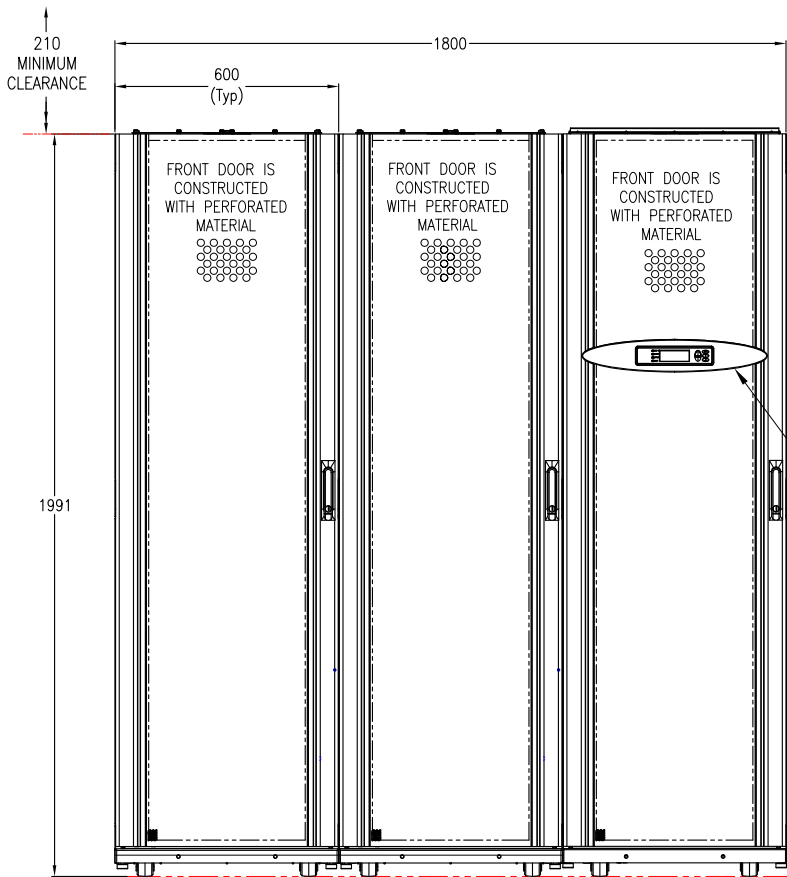
- NOTES:
1. INSTALLATION SHALL COMPLY WITH ALL APPLICABLE NATIONAL, STATE AND LOCAL ELECTRICAL REGULATIONS.
  2. PLEASE REFER TO PRODUCT MANUALS FOR ADDITIONAL DETAILS PRIOR TO INSTALLATION AND SITE PREPARATION WORK.
  3. CABLE ENTRY IS FROM BOTTOM OF THE UNIT.
  4. FRONT AND REAR SERVICE ACCESS IS REQUIRED.
  5. ENCLOSURE PROTECTION: IP20

THIS DRAWING AND SPECIFICATIONS HEREIN ARE THE PROPERTY OF SCHNEIDER ELECTRIC AND SHALL NOT BE COPIED, REPRODUCED OR USED IN WHOLE OR IN PART, AS THE BASIS FOR THE MANUFACTURE OR SALE OF ITEMS WITHOUT WRITTEN PERMISSION FROM SCHNEIDER ELECTRIC. THIS DRAWING IS BASED UPON LATEST AVAILABLE INFORMATION AND IS SUBJECT TO CHANGE WITHOUT NOTICE.

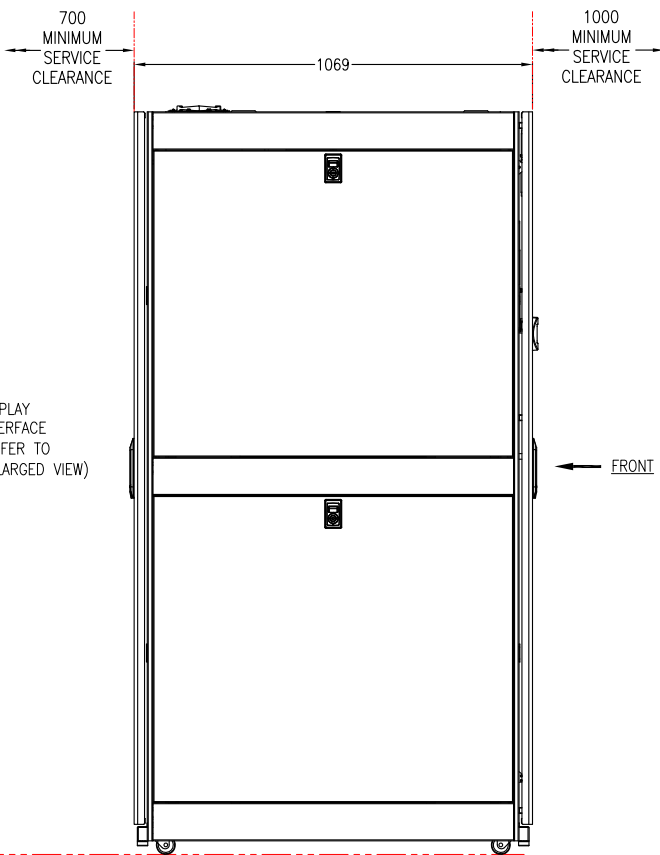


TITLE: SYMMETRA PX 160  
 Input: 400V AC 3PH SINGLE/DUAL MAINS  
 Output: 400/230V AC & 400V AC 3PH 32-160kW  
 SOLUTION ISOMETRIC VIEW

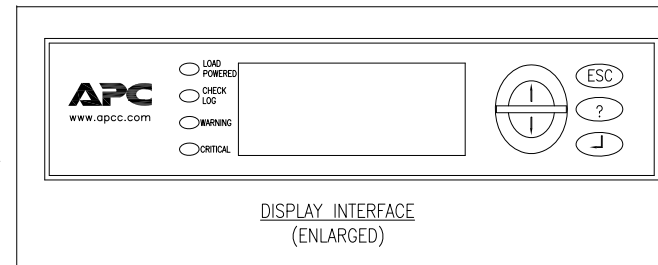
DWG NO:	SY32K160H	REV.	1
DRAWN:	BALA	1-JUL-19	FIRST ANGLE PROJECTION
ENGINEER:	J WOLSKI	1-JUL-19	
APPROVED:	J WOLSKI	1-JUL-19	



FRONT VIEW

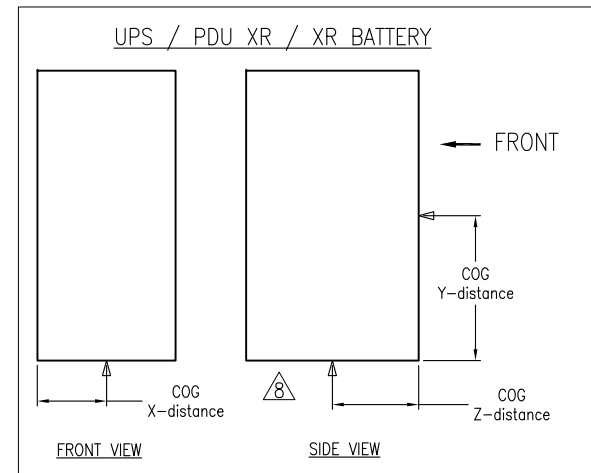


SIDE VIEW



DISPLAY INTERFACE (ENLARGED)

Floor Loading Data			
SKU #	Dimensions HxWxD in mm	Weight in kg	Floor Loading [kg/m <sup>2</sup> ]
SYCF160KH (UPS Cabinet)	1991x600x1070	595	927
SYCFXR9 (XR Batt. Cabinet)	1991x600x1070	1252	1950



- NOTES:
- INSTALLATION SHALL COMPLY WITH ALL APPLICABLE NATIONAL, STATE AND LOCAL ELECTRICAL REGULATIONS.
  - PLEASE REFER TO PRODUCT MANUALS FOR ADDITIONAL DETAILS PRIOR TO INSTALLATION AND SITE PREPARATION WORK.
  - ALL DIMENSIONS ARE IN MILLIMETERS, UNLESS OTHERWISE SPECIFIED.
  - CABLE ENTRY IS FROM THE TOP OR BOTTOM OF THE PANEL. BOTTOM CABLE ENTRY IS ONLY APPLICABLE FOR SYSTEMS INSTALLED IN A RAISED FLOOR.
- △ 5. FOR UPS NET WEIGHT AND COG DETAILS, REFER TABLE
- | UPS Rating | Number of Powermodules | Number of Blanking plates | Total Weight | Center of Gravity with PM's      | Center of Gravity without PM's   |
|------------|------------------------|---------------------------|--------------|----------------------------------|----------------------------------|
|            |                        |                           |              | X DISTANCE Y DISTANCE Z DISTANCE | X DISTANCE Y DISTANCE Z DISTANCE |
| 160kW      | 10                     | NA                        | 610kg        | 294 mm 1094 mm 439 mm            |                                  |
| 128kW      | 8                      | 2                         | 553kg        | 293 mm 1024 mm 448 mm            |                                  |
| 96kW       | 6                      | 4                         | 496kg        | 293 mm 970 mm 460 mm             | 289 mm 968 mm 518 mm             |
| 64kW       | 4                      | 6                         | 439kg        | 292 mm 934 mm 474 mm             |                                  |
| 32kW       | 2                      | 8                         | 382kg        | 290 mm 929 mm 493 mm             |                                  |
- NET WEIGHT OF THE UNIT WITHOUT POWER MODULES IS 325 kg.  
NET WEIGHT OF THE POWER MODULE IS 28.5kg.
6. XR BATTERY NET WEIGHT.
- | CENTER OF GRAVITY | WITH BATTERIES | WITHOUT BATTERIES |
|-------------------|----------------|-------------------|
| X DISTANCE        | 297.5 mm       | 299.5 mm          |
| Y DISTANCE        | 1107.0 mm      | 1023.6 mm         |
| Z DISTANCE        | 419.9 mm       | 545.5 mm          |
- NET WEIGHT OF THE ENCLOSURE WITHOUT BATTERY UNITS IS 345 kg  
NET WEIGHT OF THE BATTERY UNIT (SYBTU2-PLP) IS 25.2 kg  
NET WEIGHT OF THE ENCLOSURE WITH BATTERY UNITS INSTALLED IS 1252 kg.
- OPERATING TEMPERATURE: 32-104°F [0-40°C]
  - COLOUR: BLACK
- △ 9. THIS INFORMATION PROVIDED CONSERVATIVE CENTER OF GRAVITY CALCULATION.

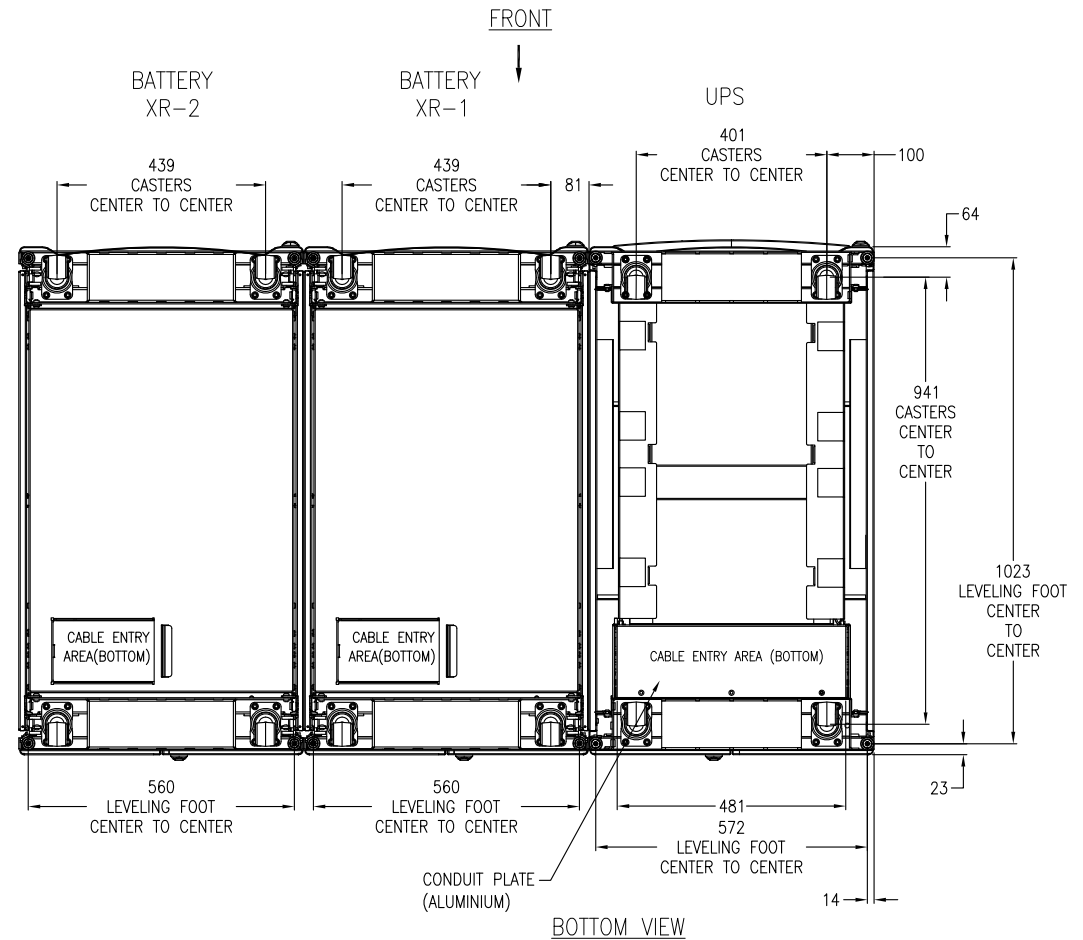
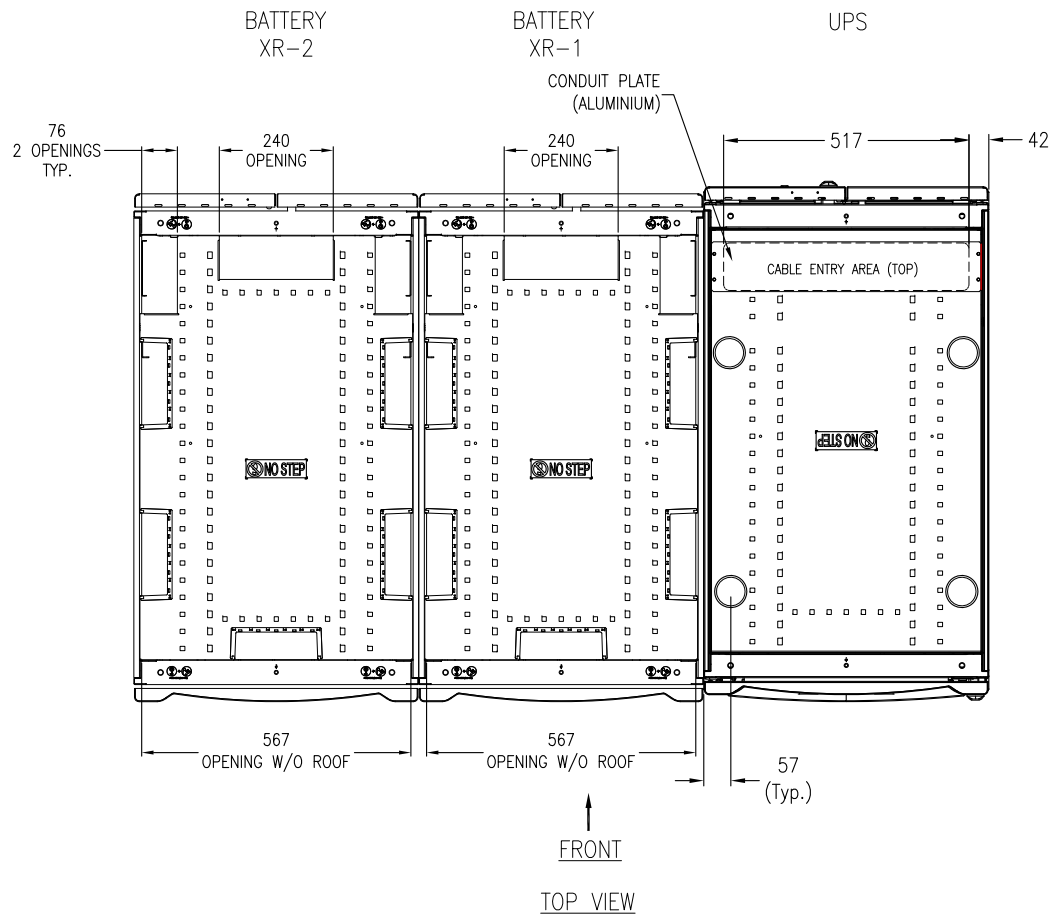
THIS DRAWING AND SPECIFICATIONS HEREIN ARE THE PROPERTY OF SCHNEIDER ELECTRIC AND SHALL NOT BE COPIED, REPRODUCED OR USED IN WHOLE OR IN PART, AS THE BASIS FOR THE MANUFACTURE OR SALE OF ITEMS WITHOUT WRITTEN PERMISSION FROM SCHNEIDER ELECTRIC. THIS DRAWING IS BASED UPON LATEST AVAILABLE INFORMATION AND IS SUBJECT TO CHANGE WITHOUT NOTICE.



TITLE: SYMMETRA PX 160  
Input: 400V AC 3PH SINGLE/DUAL MAINS  
Output: 400/230V AC & 400V AC 3PH 32-160kW  
SOLUTION GENERAL ARRANGEMENT

PROJECT: DRAWINGS SHEET 3 OF 11

DWG NO: SY32K160H REV. 1  
DRAWN: BALA 1-JUL-19 FIRST ANGLE  
ENGINEER: J WOLSKI 1-JUL-19 PROJECTION  
APPROVED: J WOLSKI 1-JUL-19



- NOTES:
1. INSTALLATION SHALL COMPLY WITH ALL APPLICABLE NATIONAL, STATE AND LOCAL ELECTRICAL REGULATIONS.
  2. PLEASE REFER TO PRODUCT MANUALS FOR ADDITIONAL DETAILS PRIOR TO INSTALLATION AND SITE PREPARATION WORK.
  3. ALL DIMENSIONS ARE IN MILLIMETERS. UNLESS OTHERWISE SPECIFIED.
  4. FOR TOP OR BOTTOM CABLE ENTRY REMOVE TOP OR BOTTOM CONDUIT PLATE, DRILL/PUNCH HOLES WITH-IN PROVIDED CABLE ENTRY AREA REFIT COVER AND INSTALL CONDUITS.

THIS DRAWING AND SPECIFICATIONS HEREIN ARE THE PROPERTY OF SCHNEIDER ELECTRIC AND SHALL NOT BE COPIED, REPRODUCED OR USED IN WHOLE OR IN PART, AS THE BASIS FOR THE MANUFACTURE OR SALE OF ITEMS WITHOUT WRITTEN PERMISSION FROM SCHNEIDER ELECTRIC. THIS DRAWING IS BASED UPON LATEST AVAILABLE INFORMATION AND IS SUBJECT TO CHANGE WITHOUT NOTICE.

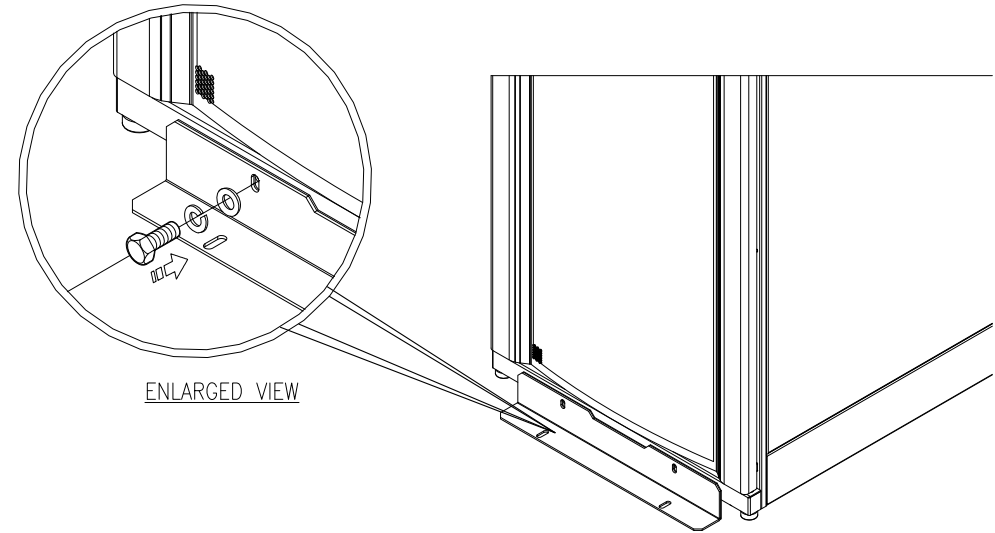
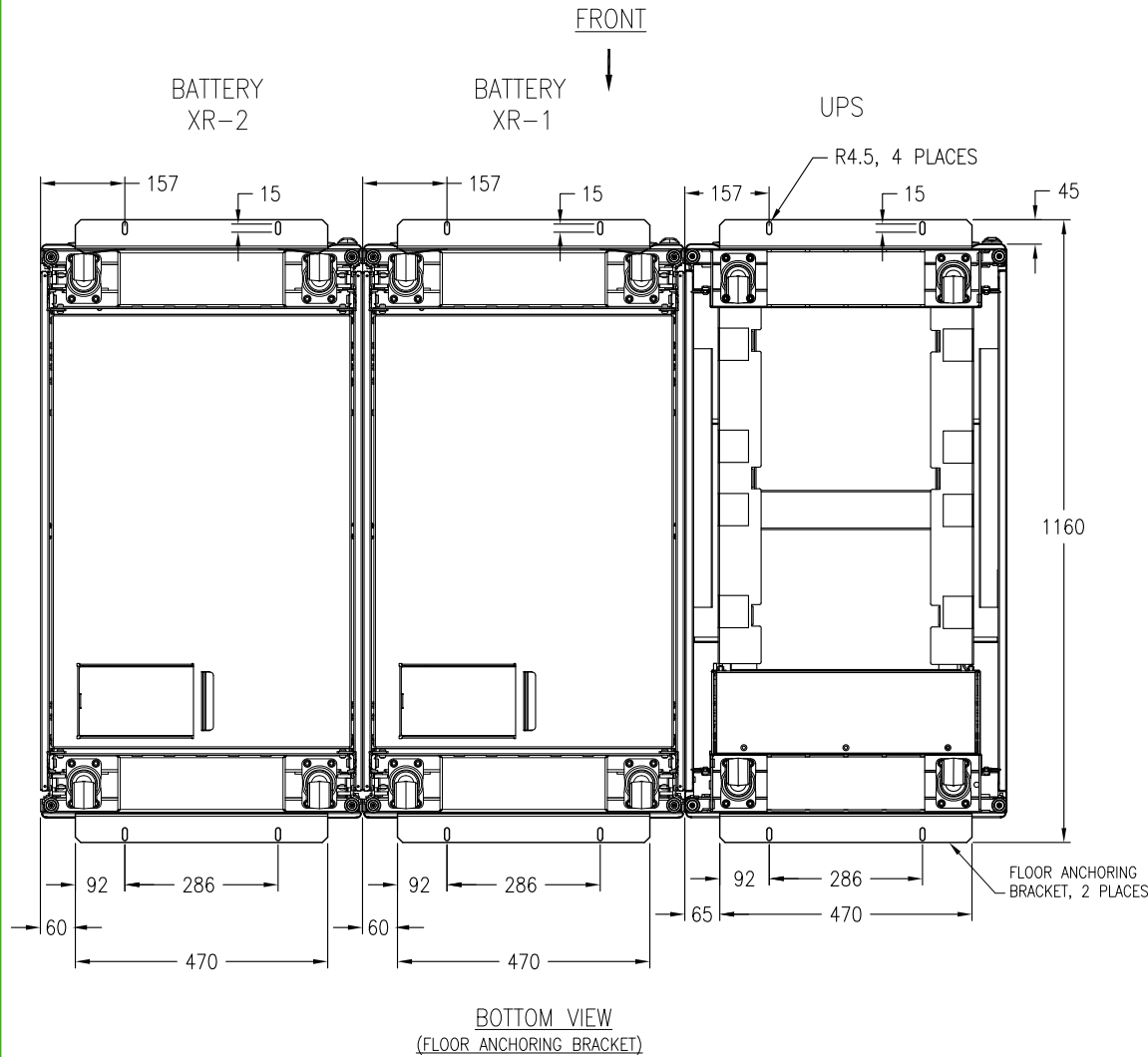


TITLE: SYMMETRA PX 160  
Input: 400V AC 3PH SINGLE/DUAL MAINS  
Output: 400/230V AC & 400V AC 3PH 32-160kW  
SOLUTION TOP AND BOTTOM VIEWS

DWG NO:	SY32K160H		REV. 1
DRAWN:	BALA	1-JUL-19	FIRST ANGLE
ENGINEER:	J WOLSKI	1-JUL-19	PROJECTION
APPROVED:	J WOLSKI	1-JUL-19	

PROJECT: DRAWINGS SHEET 4 OF 11

# ANCHORING DETAILS



## NOTES:

1. INSTALLATION SHALL COMPLY WITH ALL APPLICABLE NATIONAL, STATE AND LOCAL ELECTRICAL REGULATIONS.
2. PLEASE REFER TO PRODUCT MANUALS FOR ADDITIONAL DETAILS PRIOR TO INSTALLATION AND SITE PREPARATION WORK.
3. ALL DIMENSIONS ARE IN MILLIMETERS. UNLESS OTHERWISE SPECIFIED.
4. TO STABILIZE ENCLOSURE IN THE FIELD USE INCLUDED ANCHORING BRACKETS. ATTACH THE BRACKETS TO THE UNIT AS SHOWN. USE CODE COMPLIANT FASTENERS TO SECURE THE UNIT TO THE FLOOR

THIS DRAWING AND SPECIFICATIONS HEREIN ARE THE PROPERTY OF SCHNEIDER ELECTRIC AND SHALL NOT BE COPIED, REPRODUCED OR USED IN WHOLE OR IN PART, AS THE BASIS FOR THE MANUFACTURE OR SALE OF ITEMS WITHOUT WRITTEN PERMISSION FROM SCHNEIDER ELECTRIC. THIS DRAWING IS BASED UPON LATEST AVAILABLE INFORMATION AND IS SUBJECT TO CHANGE WITHOUT NOTICE.

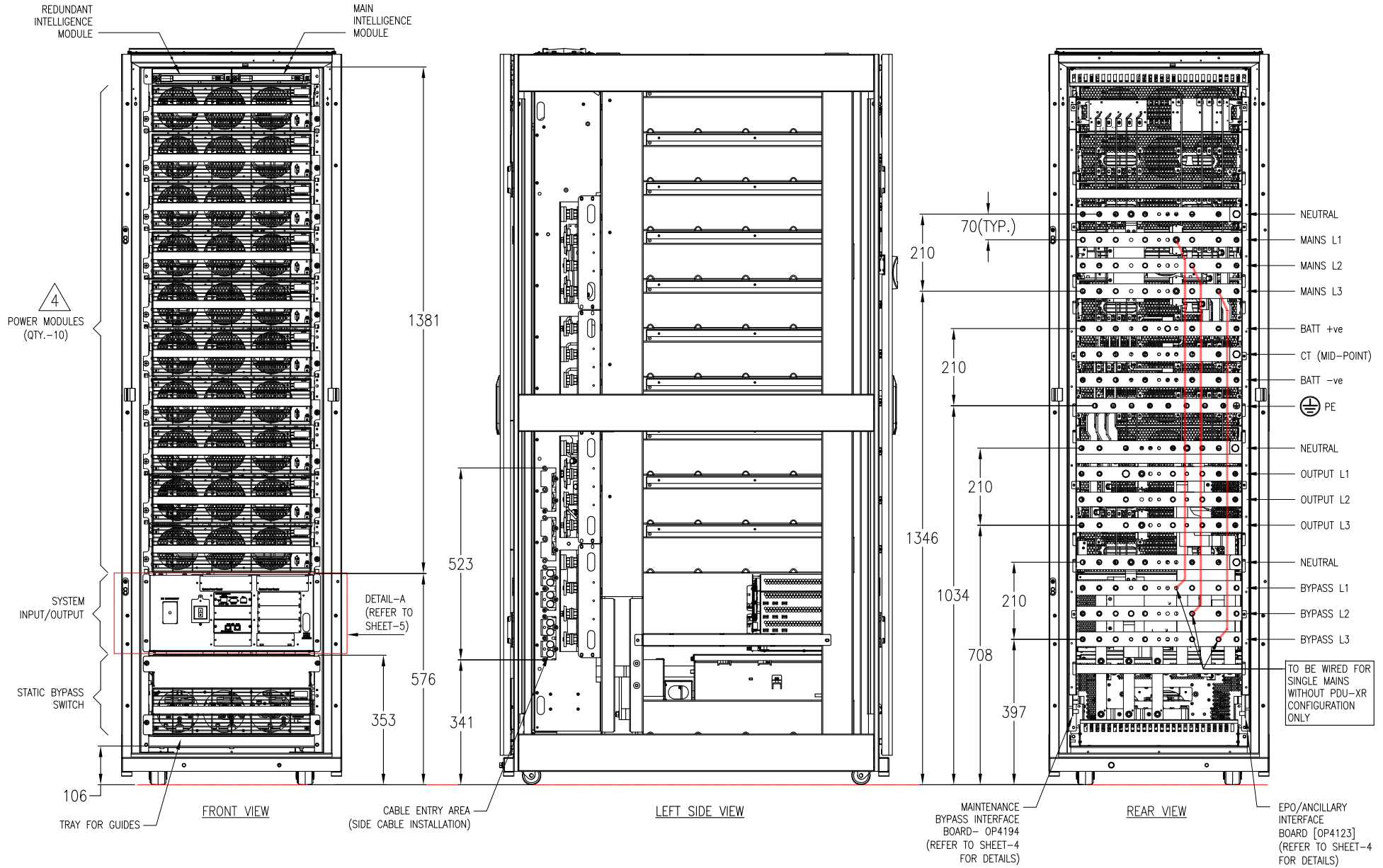


TITLE: SYMMETRA PX 160  
Input: 400V AC 3PH SINGLE/DUAL MAINS  
Output: 400/230V AC & 400V AC 3PH 32-160kW  
SOLUTION ANCHORING DETAILS

DWG NO:	SY32K160H	REV:	1
DRAWN:	BALA	1-JUL-19	FIRST ANGLE PROJECTION
ENGINEER:	J WOLSKI	1-JUL-19	
APPROVED:	J WOLSKI	1-JUL-19	

PROJECT: DRAWINGS SHEET 5 OF 11

Rating = 160kW



NOTES:

1. INSTALLATION SHALL COMPLY WITH ALL APPLICABLE NATIONAL, STATE AND LOCAL ELECTRICAL REGULATIONS.
2. PLEASE REFER TO PRODUCT MANUALS FOR ADDITIONAL DETAILS PRIOR TO INSTALLATION AND SITE PREPARATION WORK.
3. ALL DIMENSIONS ARE IN MILLIMETERS, UNLESS OTHERWISE SPECIFIED.

△4. CONFIGURATION SHOWN WITH "SYCF160KH + (10) SYPM10K16H" FOR 160kW

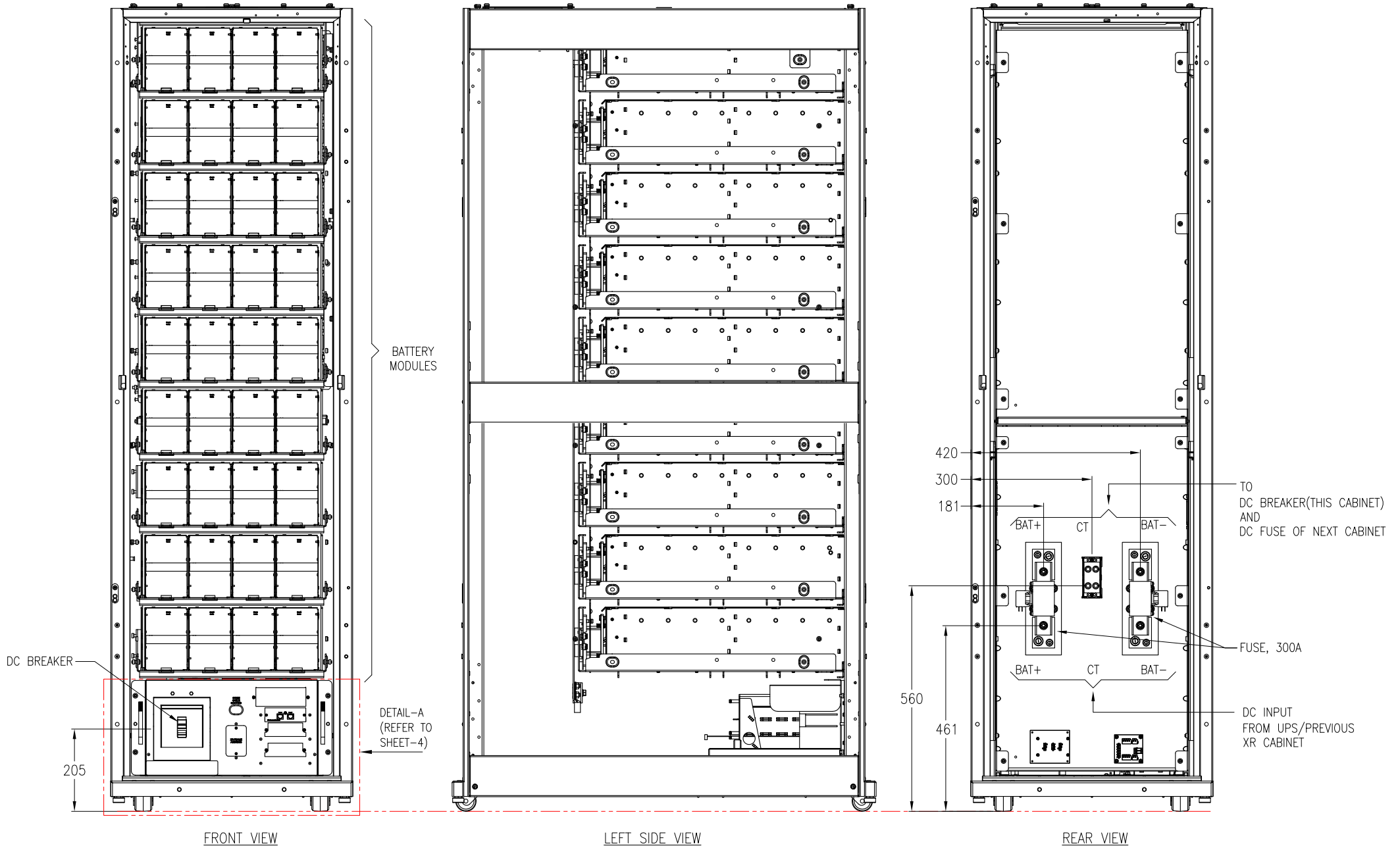
THIS DRAWING AND SPECIFICATIONS HEREIN ARE THE PROPERTY OF SCHNEIDER ELECTRIC AND SHALL NOT BE COPIED, REPRODUCED OR USED IN WHOLE OR IN PART, AS THE BASIS FOR THE MANUFACTURE OR SALE OF ITEMS WITHOUT WRITTEN PERMISSION FROM SCHNEIDER ELECTRIC. THIS DRAWING IS BASED UPON LATEST AVAILABLE INFORMATION AND IS SUBJECT TO CHANGE WITHOUT NOTICE.



TITLE: SYMMETRA PX 160  
 Input: 400V AC 3PH SINGLE/DUAL MAINS  
 Output: 400/230V AC & 400V AC 3PH 32-160kW  
 UPS INTERNAL VIEW

DWG NO:	SY32K160H	REV:	1
DRAWN:	BALA	1-JUL-19	FIRST ANGLE PROJECTION
ENGINEER:	J WOLSKI	1-JUL-19	
APPROVED:	J WOLSKI	1-JUL-19	

PROJECT: DRAWINGS SHEET 6 OF 11



- NOTES:
1. INSTALLATION SHALL COMPLY WITH ALL APPLICABLE NATIONAL, STATE AND LOCAL ELECTRICAL REGULATIONS.
  2. PLEASE REFER TO PRODUCT MANUALS FOR ADDITIONAL DETAILS PRIOR TO INSTALLATION AND SITE PREPARATION WORK.
  3. ALL DIMENSIONS ARE IN MILLIMETERS, UNLESS OTHERWISE SPECIFIED.

THIS DRAWING AND SPECIFICATIONS HEREIN ARE THE PROPERTY OF SCHNEIDER ELECTRIC AND SHALL NOT BE COPIED, REPRODUCED OR USED IN WHOLE OR IN PART, AS THE BASIS FOR THE MANUFACTURE OR SALE OF ITEMS WITHOUT WRITTEN PERMISSION FROM SCHNEIDER ELECTRIC. THIS DRAWING IS BASED UPON LATEST AVAILABLE INFORMATION AND IS SUBJECT TO CHANGE WITHOUT NOTICE.

**Schneider Electric**

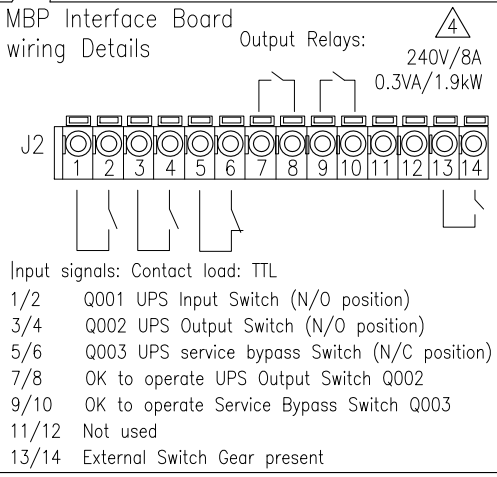
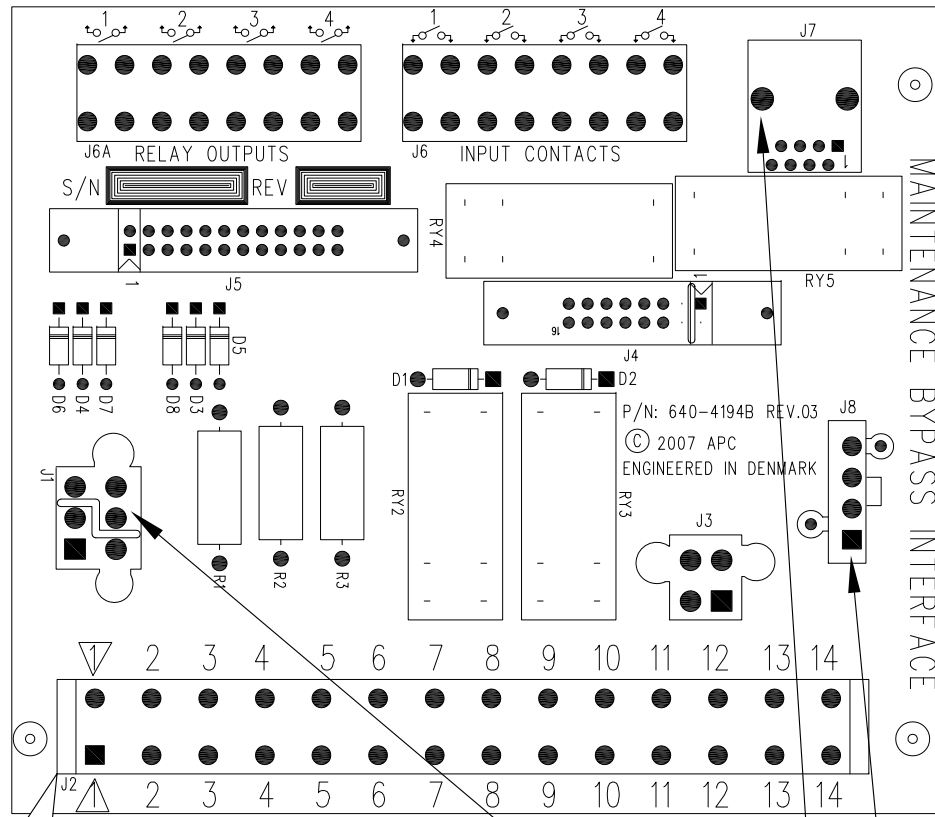
TITLE: SYMMETRA PX 160  
 Input: 400V AC 3PH SINGLE/DUAL MAINS  
 Output: 400/230V AC & 400V AC 3PH 32-160kW  
 BATTERY INTERNAL VIEW

DWG NO:	SY32K160H	REV:	1
DRAWN:	BALA	1-JUL-19	FIRST ANGLE PROJECTION
ENGINEER:	J WOLSKI	1-JUL-19	
APPROVED:	J WOLSKI	1-JUL-19	

PROJECT: DRAWINGS SHEET 7 OF 11

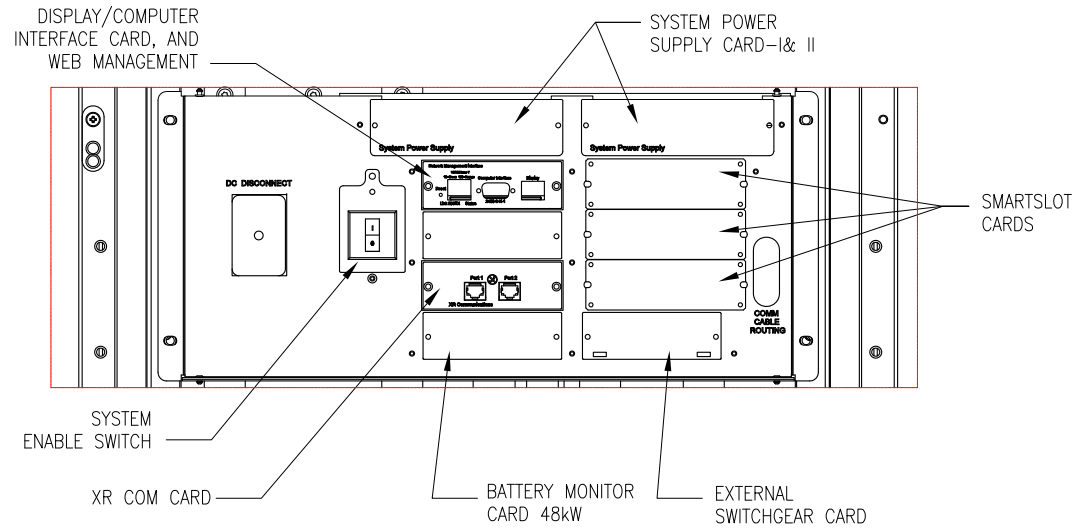


# MBP Interface Board



J7, J1 AND J8 FOR USE ONLY WITH PX2 SOLUTIONS

## DETAIL-A (SYSTEM INPUT/OUTPUT)



### NOTES:

- INSTALLATION SHALL COMPLY WITH ALL APPLICABLE NATIONAL, STATE AND LOCAL ELECTRICAL REGULATIONS.
  - PLEASE REFER TO PRODUCT MANUALS FOR ADDITIONAL DETAILS PRIOR TO INSTALLATION AND SITE PREPARATION WORK.
  - ALL DIMENSIONS ARE IN MILLIMETERS. UNLESS OTHERWISE SPECIFIED..
- $\Delta$ 4. 0.3VA - MINIMUM POWER CONSUMPTION OF THE RELAY.  
1.9kW - MAXIMUM POWER THAT CAN FLOW THROUGH THE CONTACTS

THIS DRAWING AND SPECIFICATIONS HEREIN ARE THE PROPERTY OF SCHNEIDER ELECTRIC AND SHALL NOT BE COPIED, REPRODUCED OR USED IN WHOLE OR IN PART, AS THE BASIS FOR THE MANUFACTURE OR SALE OF ITEMS WITHOUT WRITTEN PERMISSION FROM SCHNEIDER ELECTRIC. THIS DRAWING IS BASED UPON LATEST AVAILABLE INFORMATION AND IS SUBJECT TO CHANGE WITHOUT NOTICE.



TITLE: SYMMETRA PX 160  
Output: 400V AC AND 400V AC 3PH 160kW  
Output: 400/230V AC & 400V AC 3PH 32-160kW  
MBP INTERFACE BOARD WIRING DETAIL

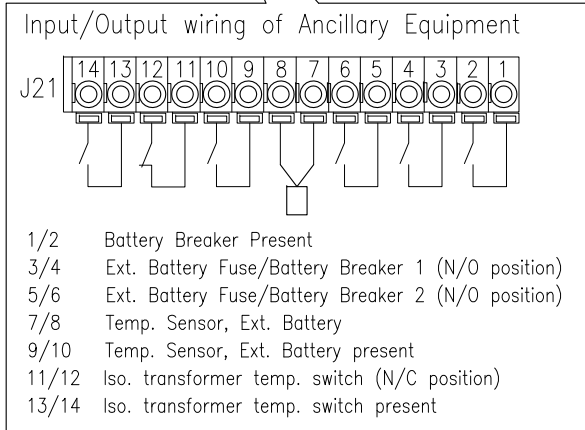
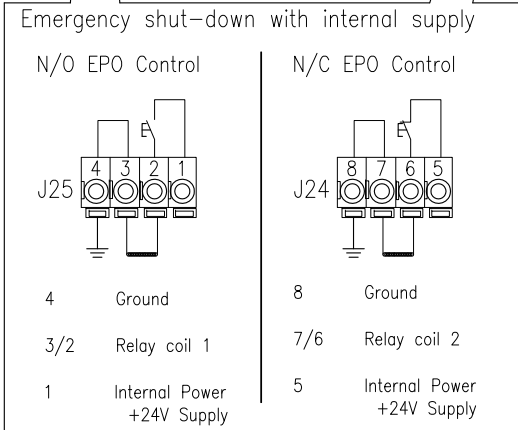
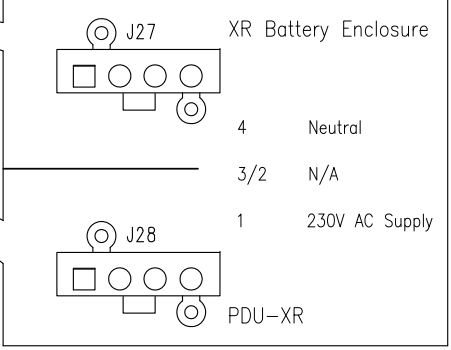
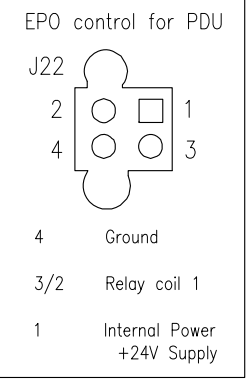
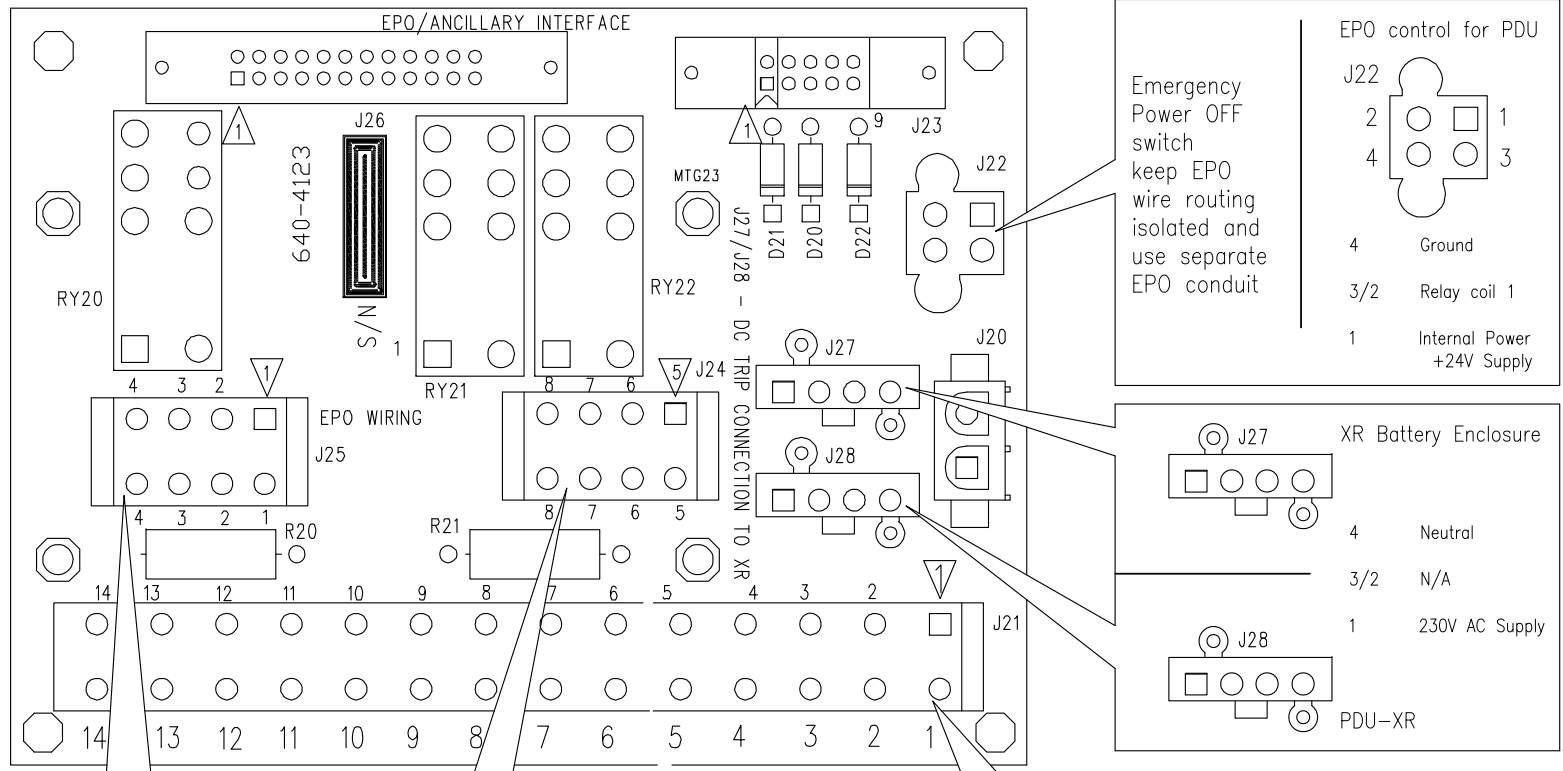
DWG NO:	SY32K160H	REV:	1
DRAWN:	BALA	DATE:	1-JUL-19
ENGINEER:	J WOLSKI	DATE:	1-JUL-19
APPROVED:	J WOLSKI	DATE:	1-JUL-19

PROJECT: DRAWINGS SHEET 8 OF 11

FIRST ANGLE PROJECTION



# EPO Wiring options



**NOTES:**

1. INSTALLATION SHALL COMPLY WITH ALL APPLICABLE NATIONAL, STATE AND LOCAL ELECTRICAL REGULATIONS.
2. PLEASE REFER TO PRODUCT MANUALS FOR ADDITIONAL DETAILS PRIOR TO INSTALLATION AND SITE PREPARATION WORK.
3. ALL DIMENSIONS ARE IN MILLIMETERS. UNLESS OTHERWISE SPECIFIED.

THIS DRAWING AND SPECIFICATIONS HEREIN ARE THE PROPERTY OF SCHNEIDER ELECTRIC AND SHALL NOT BE COPIED, REPRODUCED OR USED IN WHOLE OR IN PART, AS THE BASIS FOR THE MANUFACTURE OR SALE OF ITEMS WITHOUT WRITTEN PERMISSION FROM SCHNEIDER ELECTRIC. THIS DRAWING IS BASED UPON LATEST AVAILABLE INFORMATION AND IS SUBJECT TO CHANGE WITHOUT NOTICE.



**TITLE:** SYMMETRA PX 160  
Input: 400V AC 3PH SINGLE/DUAL MAINS  
Output: 400/230V AC & 400V AC 3PH 32-160kW  
EPO/ANCILLARY INTERFACE DETAILS

**PROJECT:** DRAWINGS SHEET 9 OF 11

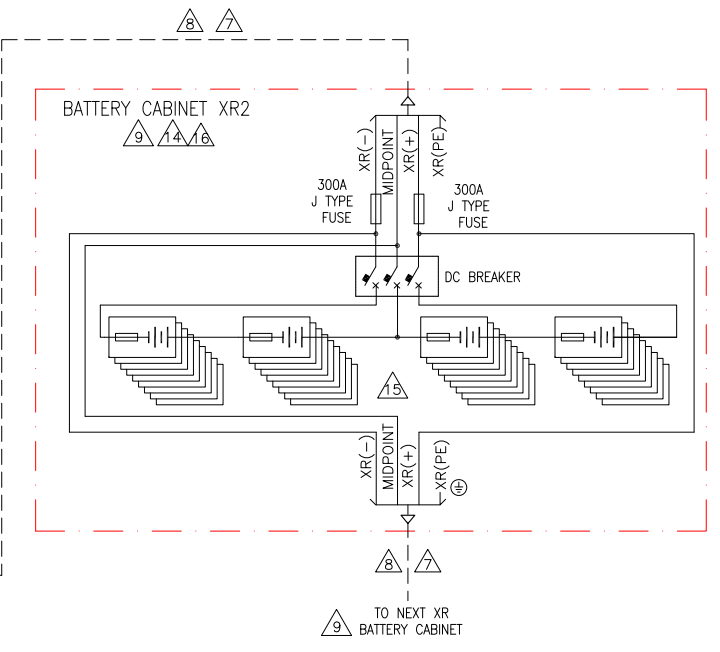
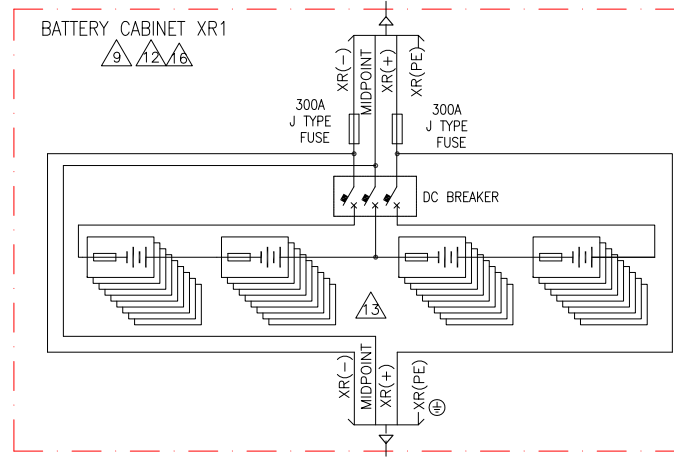
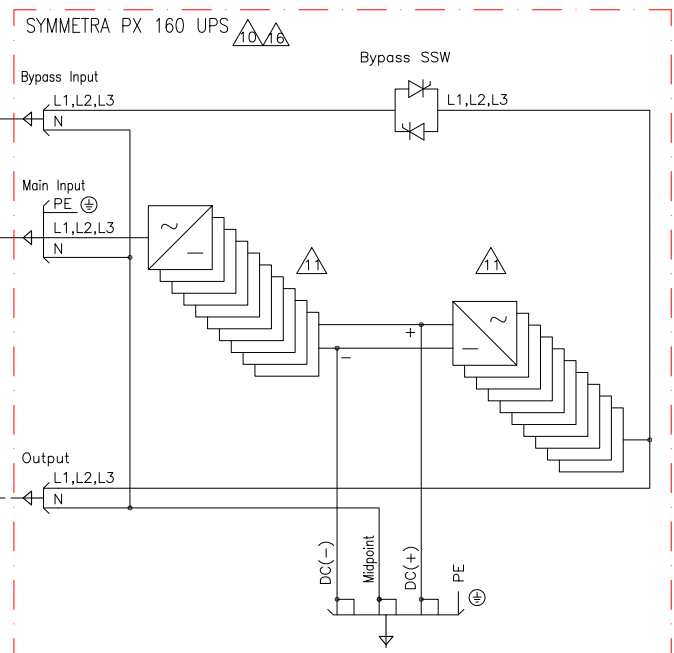
<b>DWG NO:</b> SY32K160H	<b>REV:</b> 1	
<b>DRAWN:</b> BALA	1-JUL-19	<b>FIRST ANGLE</b>
<b>ENGINEER:</b> J WOLSKI	1-JUL-19	<b>PROJECTION</b>
<b>APPROVED:</b> J WOLSKI	1-JUL-19	

RATED SHORT CIRCUIT CURRENT		
DEVICE	WITH INPUT FUSES	WITHOUT INPUT FUSES
UPS AC IN	30KA SYMMETRICAL	10KA SYMMETRICAL
UPS AC OUT	30KA SYMMETRICAL	10KA SYMMETRICAL
BATTERY CABINET XR1/XR2	25KA SYMMETRICAL	25KA SYMMETRICAL

UPS RATING AND APPLICABLE SKU NUMBERS						
UPS RATING (KW)	EXPANDABLE UPS RATING (KW)	APPLICABLE UPS SKU NUMBER	APPLICABLE NUMBER OF UPS POWER MODULES	BATTERY CABINET XR1		BATTERY CABINET XR2
				APPLICABLE BATTERY SKU NUMBER	APPLICABLE NUMBER OF BATTERY MODULES (TOTAL IN 4 BAYS)	APPLICABLE BATTERY SKU NUMBER
32	160	SYCF160KH+SYPM10K16H(2)	2	SYCFXR9+SYBTU2-PLP(12)	12	NA
64		SYCF160KH+SYPM10K16H(4)	4	SYCFXR9+SYBTU2-PLP(24)	24	NA
96		SYCF160KH+SYPM10K16H(6)	6	SYCFXR9+SYBTU2-PLP(36)	36	NA
128		SYCF160KH+SYPM10K16H(8)	8	SYCFXR9+SYBTU2-PLP(36)	36	SYCFXR9+SYBTU2-PLP(12)
160	SYCF160KH+SYPM10K16H(10)	10	SYCFXR9+SYBTU2-PLP(36)	36	SYCFXR9+SYBTU2-PLP(24)	
32	96	SYCF160KH+SYPM10K16H(2)	2	SYCFXR9+SYBTU2-PLP(12)	12	NA
64		SYCF160KH+SYPM10K16H(4)	4	SYCFXR9+SYBTU2-PLP(24)	24	NA
96		SYCF160KH+SYPM10K16H(6)	6	SYCFXR9+SYBTU2-PLP(36)	36	NA

**LEGEND:**  
 - - - - - AC CABLE - PROVIDED BY OTHERS.  
 - - - - - DC CABLE - PROVIDED BY OTHERS.  
 \_\_\_\_\_ AC BUS

- NOTES:**
- INSTALLATION MUST COMPLY WITH ALL APPLICABLE LOCAL AND NATIONAL CODES.
  - PLEASE REFER TO SCHNEIDER ELECTRIC PRODUCT MANUALS FOR DETAILS.
  - DRAWING DEPICTS POWER SYSTEM CONNECTIONS AND IS NOT REPRESENTATIVE OF PHYSICAL LAYOUT, PLEASE REFER TO MECHANICAL DRAWINGS FOR PHYSICAL LAYOUT.
  - 3x400/230V TN-S (PROVIDED BY OTHERS). FOR OTHER EARTHING PRINCIPLES, PLEASE CONTACT SCHNEIDER ELECTRIC. RECOMMENDED UPSTREAM PROTECTION IS A MINIMUM RATING TO SUPPORT MAXIMUM CURRENT, WITHOUT SELECTIVITY. IF SELECTIVITY IS REQUIRED, PLEASE CONTACT SCHNEIDER ELECTRIC.
  - ALL AC POWER CABLING IS L1, L2, L3, N, PE.
  - DUAL MAINS CONFIGURATION IS DEFAULT. FOR SINGLE MAINS OPTION, MAINS AND BYPASS BARS HAVE TO BE CONNECTED WITH 3 CABLES PROVIDED WITH THE UNIT.
  - DC CABLING TO BE 600V RATED, 2 WIRE + GROUND, EACH CIRCUIT TO BE RUN IN SEPARATE CONDUITS, POSITIVE, NEGATIVE + GROUND.
  - CABLING PROVIDED BY OTHERS IF UPS AND BATTERY CABINETS ARE INSTALLED REMOTELY, FOR LINE-UP SOLUTION CABLING PROVIDED BY SCHNEIDER ELECTRIC.
  - NUMBER OF BATTERIES AND DC NOMINAL CURRENT SHOWN IN THIS DIAGRAM PROVIDES 5 MINUTES RUN TIME. MAXIMUM 4 BATTERY ENCLOSURES MAY BE USED WITH THE SYSTEM.



THIS DRAWING AND SPECIFICATIONS HEREIN ARE THE PROPERTY OF SCHNEIDER ELECTRIC AND SHALL NOT BE COPIED, REPRODUCED OR USED IN WHOLE OR IN PART, AS THE BASIS FOR THE MANUFACTURE OR SALE OF ITEMS WITHOUT WRITTEN PERMISSION FROM SCHNEIDER ELECTRIC. THIS DRAWING IS BASED UPON LATEST AVAILABLE INFORMATION AND IS SUBJECT TO CHANGE WITHOUT NOTICE.



TITLE: SYMMETRA PX 160  
 Input: 400V AC 3PH SINGLE/DUAL MAINS  
 Output: 400/230V AC & 400V AC 3PH 32-160KW  
 SYSTEM ONE LINE DIAGRAM

DWG NO:	SY32K160H	REV:	1
DRAWN:	BALA	1-JUL-19	FIRST ANGLE
ENGINEER:	J WOLSKI	1-JUL-19	PROJECTION
APPROVED:	J WOLSKI	1-JUL-19	

INFRASTRUXURE PLANNING GUIDE SYMMETRA PX96 / PX160 (400V)																	
UPS FRAME	UPS RATING KVA / KW			AC INPUT (400V)						BATTERY SYSTEM (WITH 320A DC 3POLE BREAKER)			AC OUTPUT (400V)		MAINTENANCE BYPASS BREAKER RATING. (SINGLE OR DUAL MAINS)		
	QTY OF POWER MODULE (16KW)	[P] KW NOMINAL	POWER FACTOR	POWER (KW)		UTILITY SOURCE		CURRENT I (A)		*Q1 PROTECTION BREAKER (A)	NOMINAL VOLTAGE (V DC)	FULL LOAD POWER P (KW)	IMAX DC DISCHARGE (A)	IN (A)	*Q2 PROTECTION BREAKER (A)	*Q3	**Q5
				NOMINAL	NOMINAL + CHARGING	FREQUENCY (HZ)	VOLTAGE (V)	NOMINAL	NOMINAL + CHARGING								
96KVA/160KVA / 96KW/160KW	1	16	1	17	19	50	400	24	27	63	2X192	17	55	23	32	32	32
	2	32		34	37			49	53	80		34	110	46	63	63	63
	3	48		51	56			73	80	100		51	165	69	80	80	80
	4	64		67	74			97	107	160		68	220	92	125	125	125
	5	80		84	93			122	134	160		85	275	115	160	160	160
	6	96		101	111			146	160	225		102	330	139	160	160	160
160KVA / 160KW	7	112		118	130			170	187	225		119	385	162	250	250	250
	8	128		135	148			194	214	250		135	440	185	250	250	250
	9	144		152	167			219	241	400		152	495	208	250	250	250
	10	160		168	185			243	267	400		169	550	231	250	250	250

**NOTES:**

- SYMMETRA PX96 CONTAINS 2 FRAMES 1 X POWER FRAME AND 1 X BATTERY FRAME.
- SYMMETRA PX160 CONTAINS 3 FRAMES 1 X POWER FRAME AND 2 BATTERY FRAMES.
- THE SYMMETRA PX96 IS UPGRADABLE TO 160kW BY ADDING POWER MODULES AND BATTERY FRAME.
- \*Q1, Q2, Q3 AND Q5 – RECOMMENDED FOR 3RD PARTY MAINTENANCE BYPASS.
- \*\*USED FOR 3RD PARTY BYPASS WITH DUAL MAINS.

THIS DRAWING AND SPECIFICATIONS HEREIN ARE THE PROPERTY OF SCHNEIDER ELECTRIC AND SHALL NOT BE COPIED, REPRODUCED OR USED IN WHOLE OR IN PART, AS THE BASIS FOR THE MANUFACTURE OR SALE OF ITEMS WITHOUT WRITTEN PERMISSION FROM SCHNEIDER ELECTRIC. THIS DRAWING IS BASED UPON LATEST AVAILABLE INFORMATION AND IS SUBJECT TO CHANGE WITHOUT NOTICE.



TITLE: SYMMETRA PX 160  
 Input: 400V AC 3PH SINGLE/DUAL MAINS  
 Output: 400/230V AC & 400V AC 3PH 32-160KW  
 SITE PLANNING GUIDE

PROJECT: DRAWINGS SHEET 11 OF 11

DWG NO: SY32K160H REV. 1

DRAWN: BALA	1-JUL-19	FIRST ANGLE PROJECTION
ENGINEER: J WOLSKI	1-JUL-19	
APPROVED: J WOLSKI	1-JUL-19	