

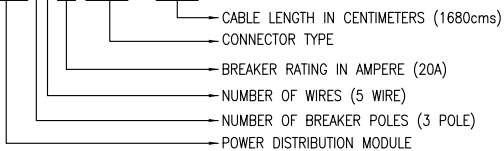
PRODUCT RATING		
DEVICE	NOMINAL CURRENT	RATED SHORT CIRCUIT CURRENT
PDPM INPUT	200A	10kA SYMMETRICAL
PDPM OUTPUT	200A	10kA SYMMETRICAL

DISTRIBUTION DETAILS					
DEVICE ID	RATING	TYPE	MAKE	MODEL	RATED SHORT CIRCUIT CURRENT
CB-1	4A/5A	3 POLE BREAKER	MERLIN GERIN	M9F53304/MGN61426	10kA SYMMETRICAL
MODULE-X	20A/30A	POWER DISTRIBUTION MODULE 3 POLE BREAKER, 3PH 5WIRE CABLE WITH NEMA L21-20/L21-30	APC	SEE NOTE 7	10kA SYMMETRICAL

MODULE OPTIONS AND DETAILS

20A-3P BREKER, 20A-3PH PLUG WITH 12 AWG CABLE	30A-3P BREAKER, 30A-3PH PLUG WITH 10 AWG CABLE
PDM3520L2120-80	PDM3530L2130-80
PDM3520L2120-140	PDM3530L2130-140
PDM3520L2120-200	PDM3530L2130-200
PDM3520L2120-260	PDM3530L2130-260
PDM3520L2120-320	PDM3530L2130-320
PDM3520L2120-380	PDM3530L2130-380
PDM3520L2120-440	PDM3530L2130-440
PDM3520L2120-500	PDM3530L2130-500
PDM3520L2120-560	PDM3530L2130-560
PDM3520L2120-620	PDM3530L2130-620
PDM3520L2120-680	PDM3530L2130-680
PDM3520L2120-740	PDM3530L2130-740
PDM3520L2120-800	PDM3530L2130-800
PDM3520L2120-860	PDM3530L2130-860
PDM3520L2120-920	PDM3530L2130-920
PDM3520L2120-980	PDM3530L2130-980
PDM3520L2120-1040	PDM3530L2130-1040
PDM3520L2120-1680	PDM3530L2130-1680

PDM3520L2120-1680

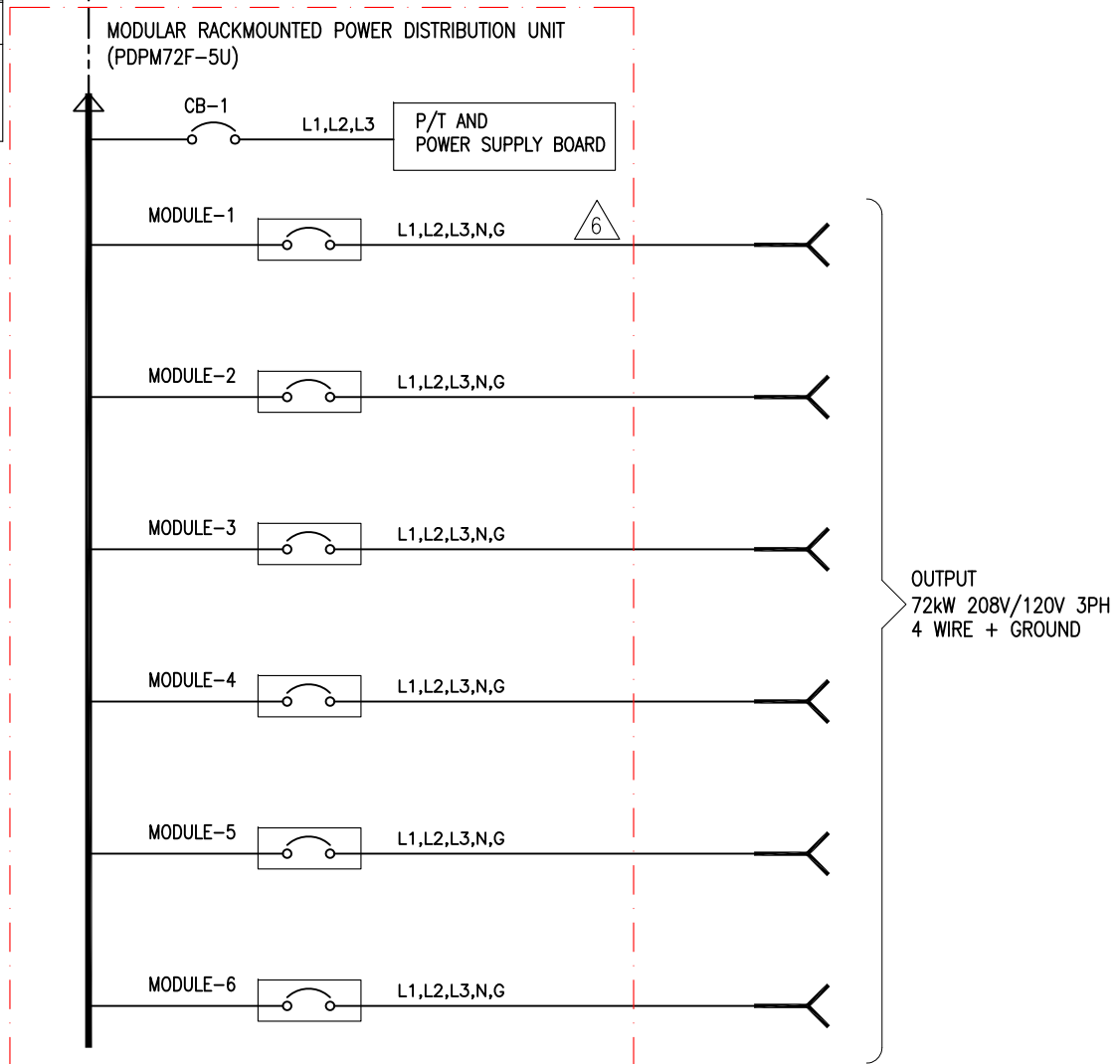
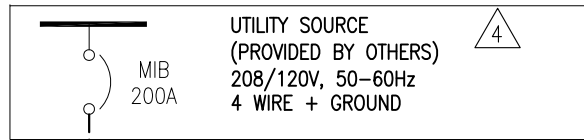


LEGEND:

----- AC CABLE - PROVIDED BY OTHERS.
 _____ AC BUS

NOTES:

- INSTALLATION SHALL COMPLY WITH ALL APPLICABLE LOCAL AND NATIONAL CODES.
- PLEASE REFER TO PRODUCT MANUALS FOR ADDITIONAL DETAILS.
- DRAWING DEPICTS POWER SYSTEM CONNECTIONS AND IS NOT REPRESENTATIVE OF PHYSICAL LAYOUT, PLEASE REFER TO MECHANICAL DRAWINGS FOR PHYSICAL LAYOUT.
- AC SOURCE TO BE 208/120V 3PH WYE 4 WIRE + GROUND (CONTACT APC IF OTHER).
- ALL AC POWER CABLING TO BE 600V RATED, 4 WIRE + GROUND.
- ALL POWER DISTRIBUTION MODULES ARE NOT PART OF THIS SKU AND ARE ORDERED SEPARATELY. PLEASE CONTACT APC.
- MAXIMUM 6 MODULES PER SKU. SEE CHART WITH MODULE OPTIONS. PLEASE CONTACT APC FOR LATEST LIST OF MODULE OPTIONS.



THIS DRAWING AND SPECIFICATIONS HEREIN ARE THE PROPERTY OF SCHNEIDER ELECTRIC AND SHALL NOT BE COPIED, REPRODUCED OR USED IN WHOLE OR IN PART, AS THE BASIS FOR THE MANUFACTURE OR SALE OF ITEMS WITHOUT WRITTEN PERMISSION FROM SCHNEIDER ELECTRIC. THIS DRAWING IS BASED UPON LATEST AVAILABLE INFORMATION AND IS SUBJECT TO CHANGE WITHOUT NOTICE.

Schneider Electric

TITLE: MODULAR RACKMOUNTED POWER DISTRIBUTION UNIT 5U
 INPUT: 208/120V 3PH 50-60Hz
 OUTPUT: 72kW 200A 208/120V 3PH
 3 POLE BREAKER MODULES WITH NEMA PLUGS
 ONE LINE DIAGRAM

DWG NO: PDPM72F-5U-SD

REV. 1

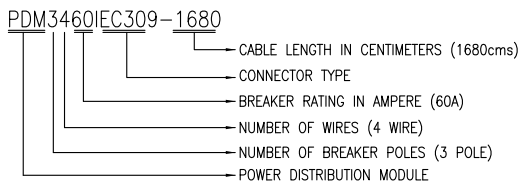
DRAWN:	C KRISHNA	05-AUG-19	ANGLE
ENGINEER:	M.WEISENBLOOM	05-AUG-19	PROJECTION
APPROVED:	B.SHERIDAN	05-AUG-19	N.A

PROJECT: SUBMITTAL DRAWINGS SHEET 1 OF 3

PRODUCT RATING		
DEVICE	NOMINAL CURRENT	RATED SHORT CIRCUIT CURRENT
PDPM INPUT	200A	10kA SYMMETRICAL
PDPM OUTPUT	200A	10kA SYMMETRICAL

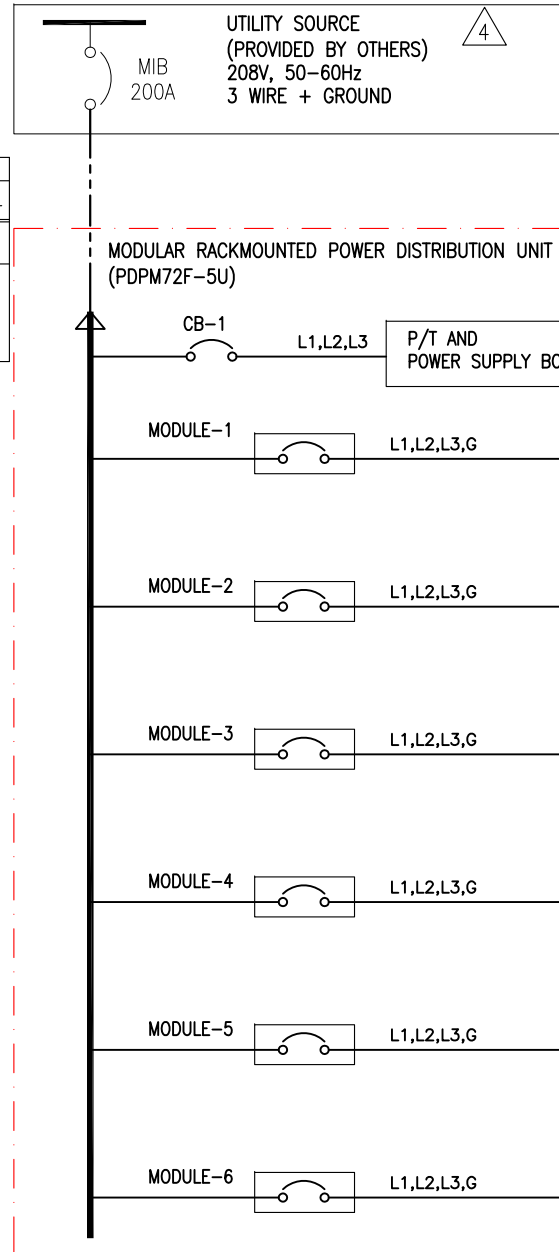
DISTRIBUTION DETAILS					
DEVICE ID	RATING	TYPE	MAKE	MODEL	RATED SHORT CIRCUIT CURRENT
CB-1	4A/5A	3 POLE BREAKER	MERLIN GERIN	M9F53304/MGN61426	10kA SYMMETRICAL
MODULE-X	60A	POWER DISTRIBUTION MODULE 3 POLE BREAKER, 3PH 4 WIRE CABLE WITH IEC-309 CONNECTOR	APC	SEE NOTE 7	10kA SYMMETRICAL

MODULE OPTIONS AND DETAILS
60A-3P BREAKER, 60A-3PH PLUG WITH 8 AWG CABLE
PDM3460IEC309-80
PDM3460IEC309-140
PDM3460IEC309-200
PDM3460IEC309-260
PDM3460IEC309-320
PDM3460IEC309-380
PDM3460IEC309-440
PDM3460IEC309-500
PDM3460IEC309-560
PDM3460IEC309-620
PDM3460IEC309-680
PDM3460IEC309-740
PDM3460IEC309-800
PDM3460IEC309-860
PDM3460IEC309-920
PDM3460IEC309-980
PDM3460IEC309-1040
PDM3460IEC309-1680



LEGEND:	
-----	AC CABLE -- PROVIDED BY OTHERS.
—————	AC BUS

- NOTES:
- INSTALLATION SHALL COMPLY WITH ALL APPLICABLE LOCAL AND NATIONAL CODES.
 - PLEASE REFER TO PRODUCT MANUALS FOR ADDITIONAL DETAILS.
 - DRAWING DEPICTS POWER SYSTEM CONNECTIONS AND IS NOT REPRESENTATIVE OF PHYSICAL LAYOUT, PLEASE REFER TO MECHANICAL DRAWINGS FOR PHYSICAL LAYOUT.
 - AC SOURCE TO BE 208/120V 3PH WYE 3 WIRE + GROUND (CONTACT APC IF OTHER).
 - ALL AC POWER CABLING TO BE 600V RATED, 3 WIRE + GROUND.
 - ALL POWER DISTRIBUTION MODULES ARE NOT PART OF THIS SKU AND ARE ORDERED SEPARATELY. PLEASE CONTACT APC.
 - MAXIMUM 6 MODULES PER SKU. SEE CHART WITH MODULE OPTIONS. PLEASE CONTACT APC FOR LATEST LIST OF MODULE OPTIONS.



THIS DRAWING AND SPECIFICATIONS HEREIN ARE THE PROPERTY OF SCHNEIDER ELECTRIC AND SHALL NOT BE COPIED, REPRODUCED OR USED IN WHOLE OR IN PART, AS THE BASIS FOR THE MANUFACTURE OR SALE OF ITEMS WITHOUT WRITTEN PERMISSION FROM SCHNEIDER ELECTRIC. THIS DRAWING IS BASED UPON LATEST AVAILABLE INFORMATION AND IS SUBJECT TO CHANGE WITHOUT NOTICE.

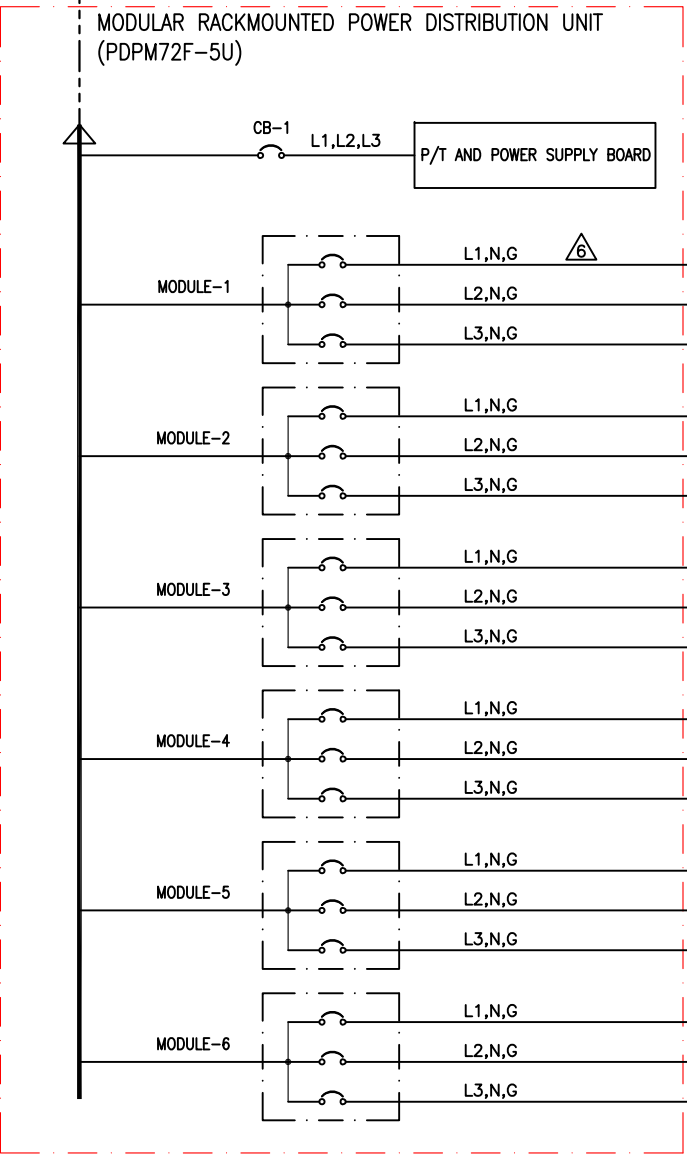
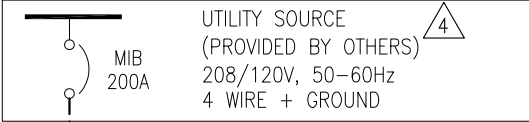


TITLE: MODULAR RACKMOUNTED POWER DISTRIBUTION UNIT 5U
 INPUT: 208V 3PH 50-60Hz
 OUTPUT: 72kW 200A 208V 3PH
 3 POLE BREAKER MODULES WITH IEC PLUGS
 ONE LINE DIAGRAM

DWG NO: PDPM72F-5U-SD
 DRAWN: C KRISHNA 05-AUG-19
 ENGINEER: M.WEISENBLOOM 05-AUG-19
 APPROVED: B.SHERIDAN 05-AUG-19

REV. 1
 ANGLE PROJECTION
 N.A.

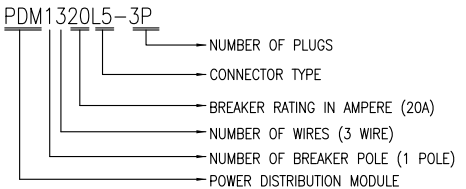
PROJECT: SUBMITTAL DRAWINGS SHEET 2 OF 3



PRODUCT RATING		
DEVICE	NOMINAL CURRENT	RATED SHORT CIRCUIT CURRENT
PDPM INPUT	200A	10kA SYMMETRICAL
PDPM OUTPUT	200A	10kA SYMMETRICAL

DISTRIBUTION DETAILS					
DEVICE ID	RATING	TYPE	MAKE	MODEL	RATED SHORT CIRCUIT CURRENT
CB-1	4A/5A	3 POLE BREAKER	MERLIN GERIN	M9F53304/MGN61426	10kA SYMMETRICAL
MODULE-X	20A	POWER DISTRIBUTION MODULE 3 POLE BREAKER, 3-1PH 3WIRE CABLE WITH NEMA L5-20 CONNECTOR	APC	SEE NOTE 7	10kA SYMMETRICAL

MODULE OPTIONS AND DETAILS	Cable length in Centimeters /Phase	L5-20 CONNECTOR Sefpication	Cable specification
PDM1320L5-3P-1	260/L1, 380/L2 & 500/L3	3-20A-1PH 3 WIRE	3 - #12 AWG
PDM1320L5-3P-2	680/L1, 860/L2 & 1040/L3	3-20A-1PH 3 WIRE	3 - #12 AWG
PDM1320L5-3P-3	1680/L1, 1680/L2 & 1680/L3	3-20A-1PH 3 WIRE	3 - #12 AWG



LEGEND:	
-----	AC CABLE - PROVIDED BY OTHERS.
—————	AC BUS

- NOTES:**
- INSTALLATION SHALL COMPLY WITH ALL APPLICABLE LOCAL AND NATIONAL CODES.
 - PLEASE REFER TO PRODUCT MANUALS FOR ADDITIONAL DETAILS.
 - DRAWING DEPICTS POWER SYSTEM CONNECTIONS AND IS NOT REPRESENTATIVE OF PHYSICAL LAYOUT, PLEASE REFER TO MECHANICAL DRAWINGS FOR PHYSICAL LAYOUT.
 - AC SOURCE TO BE 208/120V 3PH WYE 4 WIRE + GROUND (CONTACT APC IF OTHER).
 - ALL AC POWER CABLING TO BE 600V RATED, 4 WIRE + GROUND.
 - ALL POWER DISTRIBUTION MODULES ARE NOT PART OF THIS SKU AND ARE ORDERED SEPARATELY. PLEASE CONTACT APC.
 - MAXIMUM 6 MODULES PER SKU. SEE CHART WITH MODULE OPTIONS. PLEASE CONTACT APC FOR LATEST LIST OF MODULE OPTIONS.

THIS DRAWING AND SPECIFICATIONS HEREIN ARE THE PROPERTY OF SCHNEIDER ELECTRIC AND SHALL NOT BE COPIED, REPRODUCED OR USED IN WHOLE OR IN PART, AS THE BASIS FOR THE MANUFACTURE OR SALE OF ITEMS WITHOUT WRITTEN PERMISSION FROM SCHNEIDER ELECTRIC. THIS DRAWING IS BASED UPON LATEST AVAILABLE INFORMATION AND IS SUBJECT TO CHANGE WITHOUT NOTICE.



TITLE: MODULAR RACKMOUNTED POWER DISTRIBUTION UNIT 5U
 INPUT: 208/120V 3PH 50-60Hz
 OUTPUT: 72kW 200A 120V 1PH
 1 POLE BREAKER MODULES WITH NEMA PLUGS
 ONE LINE DIAGRAM

DWG NO: PDPM72F-5U-SD REV: 0
 DRAWN: C KRISHNA 05-AUG-19 ANGLE
 ENGINEER: M.WEISENBLOOM 05-AUG-19 PROJECTION
 PROJECT: SUBMITTAL DRAWINGS SHEET 3 OF 3 APPROVED: B.SHERIDAN 05-AUG-19 N.A