

LEGEND:
 - - - - - AC CABLE - PROVIDED BY OTHERS

- NOTES:**
1. INSTALLATION SHALL COMPLY WITH ALL APPLICABLE NATIONAL, STATE AND LOCAL CODES. THE GROUNDING SYSTEM SHALL BE INSTALLED AS A SEPARATELY DERIVED SYSTEM IN ACCORDANCE WITH LOCAL AND NATIONAL CODES.
 2. REFER TO PRODUCT DOCUMENTATION FOR ADDITIONAL DETAILS PRIOR TO INSTALLATION AND SITE PREPARATION WORK.
 3. DRAWING DEPICTS POWER SYSTEM CONNECTIONS AND IS NOT REPRESENTATIVE OF PHYSICAL LAYOUT, PLEASE REFER TO MECHANICAL DRAWINGS FOR PHYSICAL LAYOUT.
 - Δ 4. MAXIMUM AVAILABLE FAULT CURRENT IS 25KAIC.
 - Δ 5. AC SOURCE TO BE 600VAC 3PH 3 WIRE+GROUND (CONTACT Schneider Electric, IF OTHER). REFER TO SHEET-3 FOR RECOMMENDED OCPD RATINGS.
 - Δ 6. AC CABLING TO BE 600V RATED, 3 WIRE+GROUND.
 - Δ 7. THE GROUNDING ELECTRODE CONDUCTOR (GEC) SHALL BE PROVIDED BY OTHERS.
 - Δ 8. SINGLE MAINS CONFIGURATION IS A DEFAULT. REFER TO SHEET-2 FOR DUAL MAINS.
 9. THIS DRAWING SHOWS MINIMUM NUMBER OF XR BATTERY FRAMES. MAXIMUM (4) XR BATTERY FRAMES CAN BE BAYED TO UPS.
 - Δ 10. DISTRIBUTION MODULES ARE NOT PART OF PDPM100L6F-M, CAN BE PURCHASED SEPARATELY FROM Schneider Electric.
 - Δ 11. SEE INSTALLATION MANUAL FOR RECOMMENDED SETTINGS.
 - Δ 12. REFER TO SHEET-3 FOR RECOMMENDED OCPD RATINGS
 - Δ 13. FOR PROPER INSTALLATION OF EPO, MIB BREAKER MUST BE INTERRUPTED UPON OF THE EPO BUTTON. A SHUNT TRIP COIL MAY THEREFORE BE NECESSARY FOR THIS PURPOSE. FOR MORE DETAILS, SEE EPO SECTION IN THE INSTALLATION MANUAL.

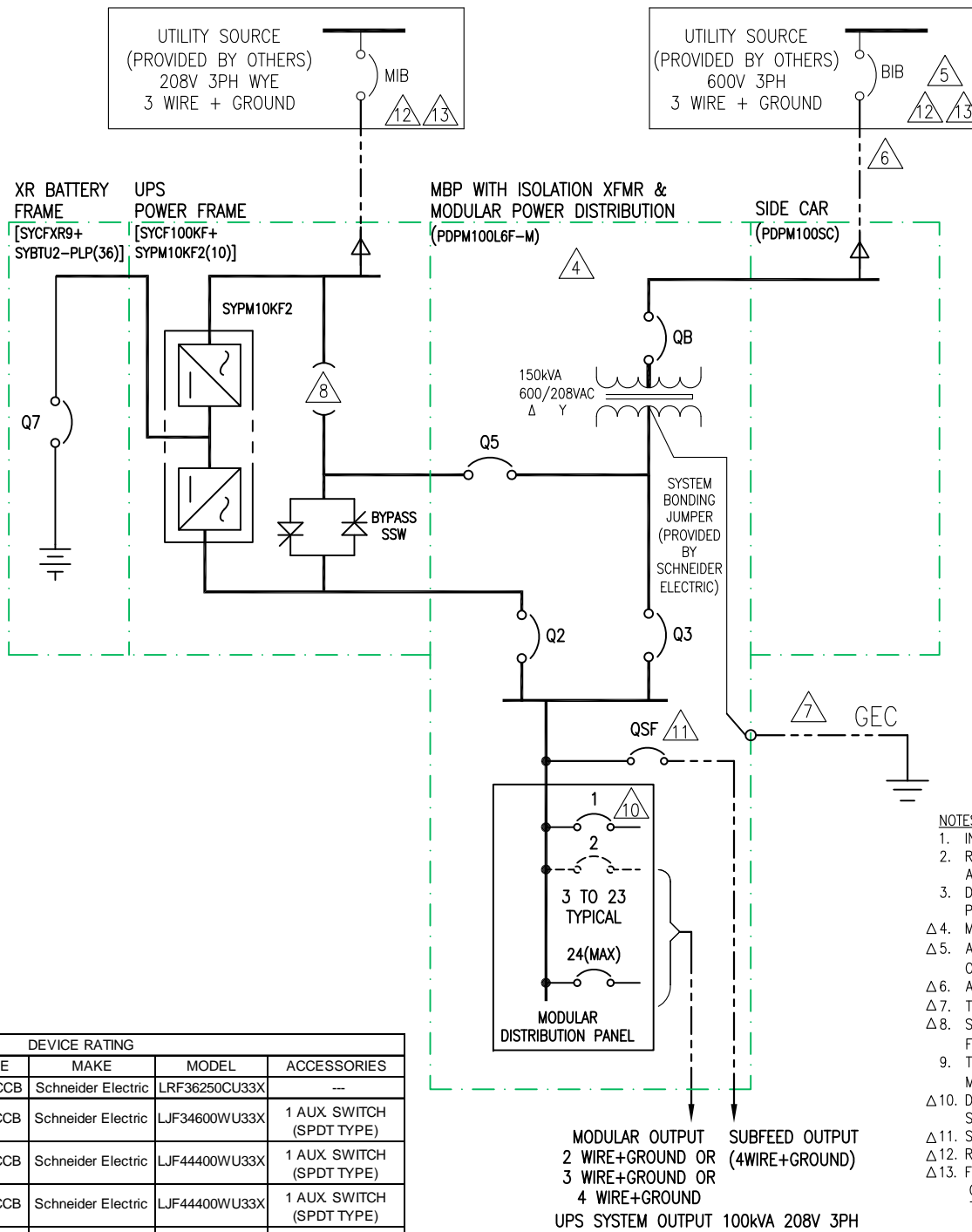
DEVICE RATING					
DEVICE	RATING	TYPE	MAKE	MODEL	ACCESSORIES
QB	250AF, 600V	3P MCCB	Schneider Electric	LRF36250CU33X	---
Q1	600AF, 480/277VAC	3P MCCB	Schneider Electric	LJF34600WU33X	1 AUX SWITCH (SPDT TYPE)
Q2	400AF, 480/277VAC	4P MCCB	Schneider Electric	LJF44400WU33X	1 AUX SWITCH (SPDT TYPE)
Q3	400AF, 480/277VAC	4P MCCB	Schneider Electric	LJF44400WU33X	1 AUX SWITCH (SPDT TYPE)
QSF	400AF, 600V	3P MCCB	Schneider Electric	LJF36400CU33X	1 AUX SWITCH (SPDT TYPE)
Q7	320A, 500VDC	3P DC BREAKER	ABB	T5N320TWAS4	1-SHUNT TRIP (110-125VAC/DC) 1 - AUX CONTACT (1 FORM C + 1 BA)

MODULAR OUTPUT
 2 WIRE+GROUND OR
 3 WIRE+GROUND OR
 4 WIRE+GROUND
 UPS SYSTEM OUTPUT 100kVA 208V 3PH
 SUBFEED OUTPUT (4WIRE+GROUND)

THIS DRAWING AND SPECIFICATIONS HEREIN ARE THE PROPERTY OF SCHNEIDER ELECTRIC AND SHALL NOT BE COPIED, REPRODUCED OR USED IN WHOLE OR IN PART, AS THE BASIS FOR THE MANUFACTURE OR SALE OF ITEMS WITHOUT WRITTEN PERMISSION FROM SCHNEIDER ELECTRIC. THIS DRAWING IS BASED UPON LATEST AVAILABLE INFORMATION AND IS SUBJECT TO CHANGE WITHOUT NOTICE.



TITLE:	SYMMETRA PX 100 INPUT: 600V 3PH, SINGLE MAINS OUTPUT: 208V 100KW BOTTOM FEED WITH PDU & XFMR SYSTEM ONE LINE DIAGRAM	DWG NO:	SY100K100L6F1B-PD-SD	REV.	6
PROJECT:	SUBMITTAL DRAWINGS	SHEET	1 OF 3	APPROVED:	B.SHERIDAN
ENGINEER:	A WARNER/F SYED	DATE:	14-JAN-16	ANGLE PROJECTION:	N.A
DRAWN:	JAYAPRAKASH	DATE:	14-JAN-16		



LEGEND:
 - - - - - AC CABLE - PROVIDED BY OTHERS

NOTES:

1. INSTALLATION SHALL COMPLY WITH ALL APPLICABLE NATIONAL, STATE AND LOCAL CODES.
2. REFER TO PRODUCT DOCUMENTATION FOR ADDITIONAL DETAILS PRIOR TO INSTALLATION AND SITE PREPARATION WORK.
3. DRAWING DEPICTS POWER SYSTEM CONNECTIONS AND IS NOT REPRESENTATIVE OF PHYSICAL LAYOUT, PLEASE REFER TO MECHANICAL DRAWINGS FOR PHYSICAL LAYOUT.
- Δ4. MAXIMUM AVAILABLE FAULT CURRENT IS 25kAIC.
- Δ5. AC SOURCE TO BE 600VAC 3PH 3 WIRE+GROUND (CONTACT Schneider Electric, IF OTHER).
- Δ6. AC CABLING TO BE 600V RATED, 3 WIRE+GROUND.
- Δ7. THE GROUNDING ELECTRODE CONDUCTOR (GEC) SHALL BE PROVIDED BY OTHERS.
- Δ8. SINGLE MAINS CONFIGURATION IS A DEFAULT.
FOR DUAL MAINS CONFIGURATION REMOVE THE 3 SHORTING STRAPS/WIRES.
9. THIS DRAWING SHOWS MINIMUM NUMBER OF XR BATTERY FRAMES.
MAXIMUM (4) XR BATTERY FRAMES CAN BE BAYED TO UPS.
- Δ10. DISTRIBUTION MODULES ARE NOT PART OF PDPM100L6F-M, CAN BE PURCHASED SEPARATELY FROM Schneider Electric.
- Δ11. SEE INSTALLATION MANUAL FOR RECOMMENDED SETTINGS.
- Δ12. REFER TO SHEET-3 FOR RECOMMENDED OCPD RATINGS.
- Δ13. FOR PROPER INSTALLATION OF EPO, MIB BREAKER MUST BE INTERRUPTED UPON OF THE EPO BUTTON. A SHUNT TRIP COIL MAY THEREFORE BE NECESSARY FOR THIS PURPOSE. FOR MORE DETAILS, SEE EPO SECTION IN THE INSTALLATION MANUAL.

MODULAR OUTPUT SUBFEED OUTPUT
 2 WIRE+GROUND OR (4 WIRE+GROUND)
 3 WIRE+GROUND OR
 4 WIRE+GROUND
 UPS SYSTEM OUTPUT 100kVA 208V 3PH

DEVICE RATING					
DEVICE	RATING	TYPE	MAKE	MODEL	ACCESSORIES
QB	250AF, 600V	3P MCCB	Schneider Electric	LRF36250CU33X	---
Q5	600AF, 480/277VAC	3P MCCB	Schneider Electric	LJF34600WU33X	1 AUX SWITCH (SPDT TYPE)
Q2	400AF, 480/277VAC	4P MCCB	Schneider Electric	LJF44400WU33X	1 AUX SWITCH (SPDT TYPE)
Q3	400AF, 480/277VAC	4P MCCB	Schneider Electric	LJF44400WU33X	1 AUX SWITCH (SPDT TYPE)
QSF	400AF, 600V	3P MCCB	Schneider Electric	LJF36400CU33X	1 AUX SWITCH (SPDT TYPE)
Q7	320A, 500VDC	3P DC BREAKER	ABB	T5N320TWAS4	1-SHUNT TRIP (110-125VAC/DC) 1 - AUX CONTACT (1 FORM C + 1 BA)

THIS DRAWING AND SPECIFICATIONS HEREIN ARE THE PROPERTY OF SCHNEIDER ELECTRIC AND SHALL NOT BE COPIED, REPRODUCED OR USED IN WHOLE OR IN PART, AS THE BASIS FOR THE MANUFACTURE OR SALE OF ITEMS WITHOUT WRITTEN PERMISSION FROM SCHNEIDER ELECTRIC. THIS DRAWING IS BASED UPON LATEST AVAILABLE INFORMATION AND IS SUBJECT TO CHANGE WITHOUT NOTICE.



TITLE: SYMMETRA PX 100
 INPUT: 600V 3PH, DUAL MAINS
 OUTPUT: 208V 100KW
 BOTTOM FEED WITH PDU & XFMR
 SYSTEM ONE LINE DIAGRAM
PROJECT: SUBMITTAL DRAWINGS **SHEET 2 OF 3**

DWG NO: SY100K100L6F2B-PD-SD
DRAWN: JAYAPRAKASH 14-JAN-16
ENGINEER: A WARNER/F SYED 14-JAN-16
APPROVED: B.SHERIDAN 14-JAN-16

REV. 6
ANGLE PROJECTION
 N.A.

Symmetra® PX 100K UPS Frame Submittal Data - w/ Modular PDU - w/600V Transformer

UPS Rating			Rectifier AC Input MIB Dual Feed ¹									Transformer AC Input MIB Single Feed or BIB Dual Feed ⁴								External Battery System ⁵					AC Output	
			Voltage		Current		Recommendations ^{3, 9, 10}					Voltage	Currents		Recommendations ^{3, 9}				Nominal VDC	Battery kW	Current @ Nom. VDC	Recommendations ^{3, 9}		Current		
UPS Frame Rating	Qty of 10kW Power Modules ⁸	kVA	kW	Input ¹	Output ²	Full Load	Max. ⁶	100% OCPD	100% Cable	80% OCPD	80% Cable	Input	NOM.	Max. ⁷	100% OCPD	100% Cable	80% OCPD	80% Cable	Nominal VDC	Battery kW	Current @ Nom. VDC	100% OCPD	100% Cable	NOM.	Max. ⁷	
100kVA/100kW 100K Frame	1	10	10	208	208	33	36	40A	1x8	45A	1x8	600	N/A	N/A	N/A	N/A	N/A	N/A	2x 192	11	28	30A	1x8	28	35	
	2	20	20	208	208	66	72	80A	1x4	90A	1x4	600	N/A	N/A	N/A	N/A	N/A	N/A	2x 192	22	56	60A	1x6	56	70	
	3	30	30	208	208	100	108	110A	1x2	125A	1x1	600	N/A	N/A	N/A	N/A	N/A	N/A	2x 192	32	84	90A	1x4	84	105	
	4	40	40	208	208	133	144	150A	1x1/0	175A	1x2/0	600	N/A	N/A	N/A	N/A	N/A	N/A	2x 192	43	113	125A	1x2	112	140	
	5	50	50	208	208	166	180	200A	1x3/0	225A	1x4/0	600	N/A	N/A	N/A	N/A	N/A	N/A	2x 192	54	141	150A	1x1/0	140	175	
	6	60	60	208	208	199	216	225A	1x4/0	250A	1x250	600	N/A	N/A	N/A	N/A	N/A	N/A	2x 192	65	169	175A	1x2/0	168	210	
	7	70	70	208	208	232	252	300A	1x250	300A	1x350	600	N/A	N/A	N/A	N/A	N/A	N/A	2x 192	76	197	200A	1x3/0	196	245	
	8	80	80	208	208	266	288	300A	1x350	350A	1x400	600	N/A	N/A	N/A	N/A	N/A	N/A	2x 192	86	225	225A	1x4/0	224	280	
	9	90	90	208	208	299	324	350A	1x400	400A	1x500	600	N/A	N/A	N/A	N/A	N/A	N/A	2x 192	97	253	300A	1x250	252	315	
	10 ⁸	100	100	208	208	332	360	400A	1x500	450A	2x4/0	600	127	N/A	150A	1x1	175A	1x2/0	2x 192	108	282	300A	1x300	278	347	

[APC Symmetra® PX](#)

Notes. 600 V Modular PDU: PDPM100L6F-M

1. The rectifier Input source for dual feed must be 208V Wye 3-wire + Ground. Contact Schneider Electric if other.
2. Output is either 208V Wye 3-wire + Ground or 4-wire + GROUND.
3. Recommended cables are THHN AWG/kcmil minimum requirement in raceway, sized for 30°C environment, 75°C terminations, PFC load, and three (3) current carrying conductors per circuit. All cabling must comply with installation site conditions and any applicable Local or National Codes.
4. The transformer input source must be 600V 3-wire + Ground, and the OCPD must be capable of supporting a inrush current of 1500A.
5. Contact Schneider Electric for assistance with all external battery designs. Maximum allowed DC cabling voltage drop is 1 VDC.
6. Electronic Input Current Limit
7. This is the UPS short time rating of 125% Overload for 10 minutes. Actual short time performance may be limited by the overcurrent protective device selected.
8. For maximum scalability or future expansion it is recommended that the UPS frames be installed at their full ratings - see bold highlighted data
9. All OCPD's and cabling are by others.
10. Dual feed only for mains 1 input. See Bypass AC Input for mains 2 input.
11. OCPD = Over Current Protective Device
12. Final selections are responsibility of Engineer of record based on installed conditions and SCC/ Selective co-ordination/ arc-flash analysis.

THIS DRAWING AND SPECIFICATIONS HEREIN ARE THE PROPERTY OF SCHNEIDER ELECTRIC AND SHALL NOT BE COPIED, REPRODUCED OR USED IN WHOLE OR IN PART, AS THE BASIS FOR THE MANUFACTURE OR SALE OF ITEMS WITHOUT WRITTEN PERMISSION FROM SCHNEIDER ELECTRIC. THIS DRAWING IS BASED UPON LATEST AVAILABLE INFORMATION AND IS SUBJECT TO CHANGE WITHOUT NOTICE.



TITLE: SYMMETRA PX 100
 INPUT: 600V 3PH
 OUTPUT: 208V 100kW
 BOTTOM FEED WITH PDU & XFMR
 SITE PLANNING DATA
 PROJECT: SUBMITTAL DRAWINGS SHEET 3 OF 3

DWG NO: SY100K100L6FB-PD-SPD REV. 4
 DRAWN: BALAMURUGAN 02-JUN-15 ANGLE PROJECTION
 ENGINEER: A.WARNER 02-JUN-15 N.A.
 APPROVED: B.SHERIDAN 02-JUN-15