

**LEGEND:**  
 - - - - - AC CABLE - PROVIDED BY OTHERS

- NOTES:**
1. INSTALLATION SHALL COMPLY WITH ALL APPLICABLE NATIONAL, STATE AND LOCAL CODES. THE GROUNDING SYSTEM SHALL BE INSTALLED AS A SEPARATELY DERIVED SYSTEM IN ACCORDANCE WITH LOCAL AND NATIONAL CODES.
  2. REFER TO PRODUCT DOCUMENTATION FOR ADDITIONAL DETAILS PRIOR TO INSTALLATION AND SITE PREPARATION WORK.
  3. DRAWING DEPICTS POWER SYSTEM CONNECTIONS AND IS NOT REPRESENTATIVE OF PHYSICAL LAYOUT, PLEASE REFER TO MECHANICAL DRAWINGS FOR PHYSICAL LAYOUT.
  - Δ 4. MAXIMUM AVAILABLE FAULT CURRENT IS 65kAIC.
  - Δ 5. AC SOURCE TO BE 208VAC 3PH 3 WIRE+GROUND (CONTACT Schneider Electric, IF OTHER). REFER TO SHEET-3 FOR RECOMMENDED OCPD RATINGS.
  - Δ 6. AC CABLING TO BE 600V RATED, 3 WIRE+GROUND.
  - Δ 7. THE GROUNDING ELECTRODE CONDUCTOR (GEC) SHALL BE PROVIDED BY OTHERS.
  - Δ 8. SINGLE MAINS CONFIGURATION IS A DEFAULT. REFER TO SHEET-2 FOR DUAL MAINS.
  9. THIS DRAWING SHOWS MINIMUM NUMBER OF XR BATTERY FRAMES. MAXIMUM (4) XR BATTERY FRAMES CAN BE BAYED TO UPS.
  - Δ 10. DISTRIBUTION MODULES ARE NOT PART OF PDPM100F6F-M, CAN BE PURCHASED SEPARATELY FROM Schneider Electric.
  - Δ 11. SEE INSTALLATION MANUAL FOR RECOMMENDED SETTINGS.
  - Δ 12. REFER TO SHEET-3 FOR RECOMMENDED OCPD RATINGS
  - Δ 13. FOR PROPER INSTALLATION OF EPO, MIB BREAKER MUST BE INTERRUPTED UPON OF THE EPO BUTTON. A SHUNT TRIP COIL MAY THEREFORE BE NECESSARY FOR THIS PURPOSE. FOR MORE DETAILS, SEE EPO SECTION IN THE INSTALLATION MANUAL.

MODULAR OUTPUT 2 WIRE+GROUND OR 3 WIRE+GROUND OR 4 WIRE+GROUND  
 SUBFEED OUTPUT (4WIRE+GROUND)  
 UPS SYSTEM OUTPUT 100kVA 208V 3PH

DEVICE RATING					
DEVICE	RATING	TYPE	MAKE	MODEL	ACCESSORIES
QB	600AF, 480/277VAC	3P MCCB	Schneider Electric	LJF34600WU33X	---
Q1	600AF, 480/277VAC	3P MCCB	Schneider Electric	LJF34600WU33X	1 AUX. SWITCH (SPDT TYPE)
Q2	400AF, 480/277VAC	4P MCCB	Schneider Electric	LJF44400WU33X	1 AUX. SWITCH (SPDT TYPE)
Q3	400AF, 480/277VAC	4P MCCB	Schneider Electric	LJF44400WU33X	1 AUX. SWITCH (SPDT TYPE)
QSF	400AF, 600V	3P MCCB	Schneider Electric	LJF36400CU33X	1 AUX. SWITCH (SPDT TYPE)
Q7	320A, 500VDC	3P DC BREAKER	ABB	T5N320TWAS4	1-SHUNT TRIP (110-125VAC/DC) 1 - AUX CONTACT (1 FORM C + 1 BA)

THIS DRAWING AND SPECIFICATIONS HEREIN ARE THE PROPERTY OF SCHNEIDER ELECTRIC AND SHALL NOT BE COPIED, REPRODUCED OR USED IN WHOLE OR IN PART, AS THE BASIS FOR THE MANUFACTURE OR SALE OF ITEMS WITHOUT WRITTEN PERMISSION FROM SCHNEIDER ELECTRIC. THIS DRAWING IS BASED UPON LATEST AVAILABLE INFORMATION AND IS SUBJECT TO CHANGE WITHOUT NOTICE.

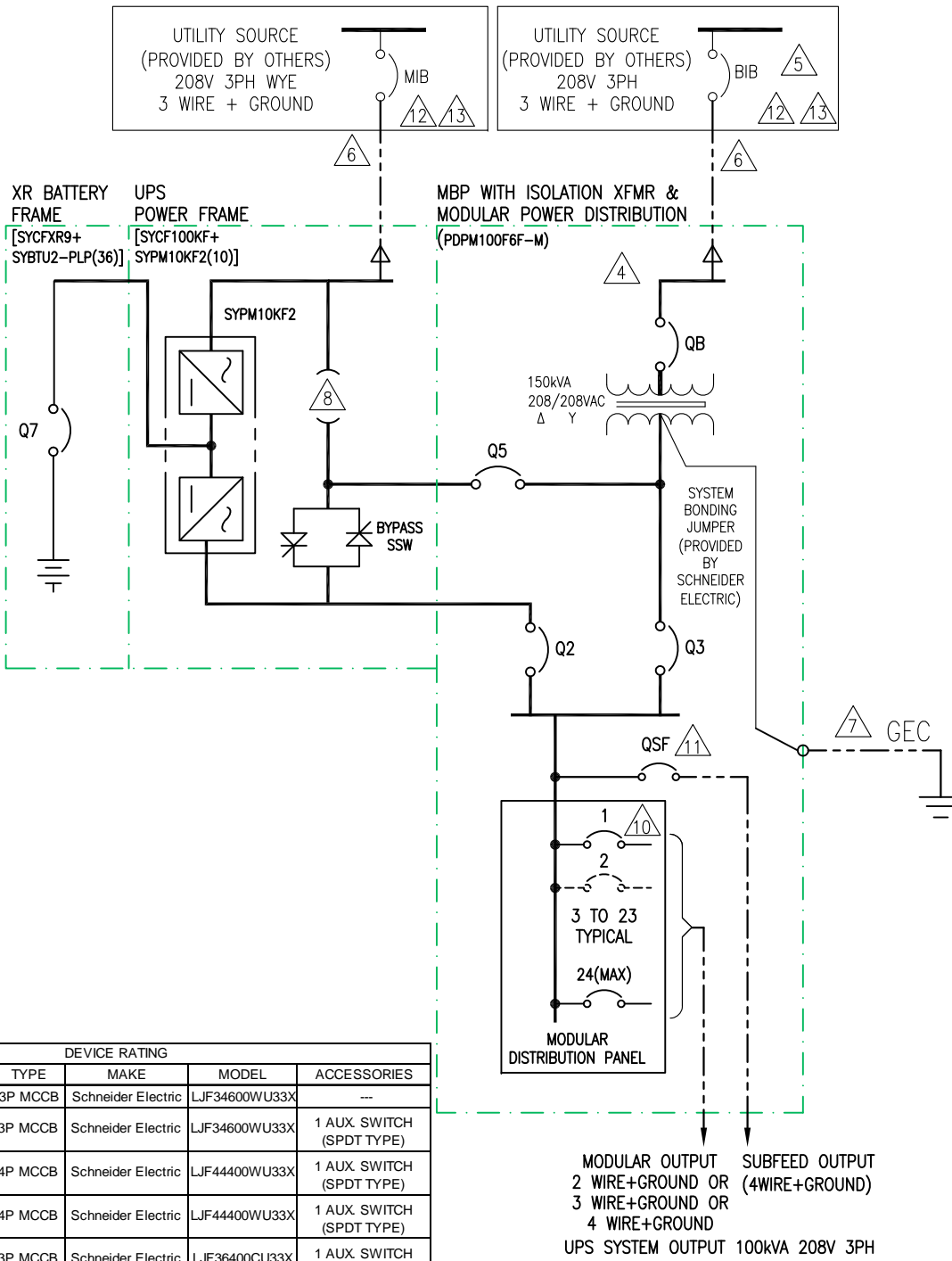


**TITLE:** SYMMETRA PX 100  
 INPUT: 208V 3PH, SINGLE MAINS  
 OUTPUT: 208V 100KW  
 TOP FEED WITH PDU & XFMR  
 SYSTEM ONE LINE DIAGRAM

**PROJECT:** SUBMITTAL DRAWINGS **SHEET 1 OF 3**

**DWG NO:** SY100K100F6F1T-PD-SD  
**DRAWN:** JAYAPRAKASH 14-JAN-16  
**ENGINEER:** A WARNER/F SYED 14-JAN-16  
**APPROVED:** B.SHERIDAN 14-JAN-16

**REV.** 6  
**ANGLE PROJECTION** N.A



**LEGEND:**  
 - - - - - AC CABLE - PROVIDED BY OTHERS

- NOTES:**
- INSTALLATION SHALL COMPLY WITH ALL APPLICABLE NATIONAL, STATE AND LOCAL CODES.
  - REFER TO PRODUCT DOCUMENTATION FOR ADDITIONAL DETAILS PRIOR TO INSTALLATION AND SITE PREPARATION WORK.
  - DRAWING DEPICTS POWER SYSTEM CONNECTIONS AND IS NOT REPRESENTATIVE OF PHYSICAL LAYOUT, PLEASE REFER TO MECHANICAL DRAWINGS FOR PHYSICAL LAYOUT.
  - MAXIMUM AVAILABLE FAULT CURRENT IS 65kAIC.
  - AC SOURCE TO BE 208VAC 3PH 3 WIRE+GROUND (CONTACT Schneider Electric, IF OTHER).
  - AC CABLING TO BE 600V RATED, 3 WIRE+GROUND.
  - THE GROUNDING ELECTRODE CONDUCTOR (GEC) SHALL BE PROVIDED BY OTHERS.
  - SINGLE MAINS CONFIGURATION IS A DEFAULT.  
FOR DUAL MAINS CONFIGURATION REMOVE THE 3 SHORTING STRAPS/WIRES.
  - THIS DRAWING SHOWS MINIMUM NUMBER OF XR BATTERY FRAMES.  
MAXIMUM (4) XR BATTERY FRAMES CAN BE BAYED TO UPS.
  - DISTRIBUTION MODULES ARE NOT PART OF PDPM100F6F-M, CAN BE PURCHASED SEPARATELY FROM Schneider Electric.
  - SEE INSTALLATION MANUAL FOR RECOMMENDED SETTINGS.
  - REFER TO SHEET-3 FOR RECOMMENDED OCPD RATINGS.
  - FOR PROPER INSTALLATION OF EPO, MIB BREAKER MUST BE INTERRUPTED UPON OF THE EPO BUTTON. A SHUNT TRIP COIL MAY THEREFORE BE NECESSARY FOR THIS PURPOSE. FOR MORE DETAILS, SEE EPO SECTION IN THE INSTALLATION MANUAL.

DEVICE RATING					
DEVICE	RATING	TYPE	MAKE	MODEL	ACCESSORIES
QB	600AF, 480/277VAC	3P MCCB	Schneider Electric	LJF34600WU33X	---
Q5	600AF, 480/277VAC	3P MCCB	Schneider Electric	LJF34600WU33X	1 AUX. SWITCH (SPDT TYPE)
Q2	400AF, 480/277VAC	4P MCCB	Schneider Electric	LJF44400WU33X	1 AUX. SWITCH (SPDT TYPE)
Q3	400AF, 480/277VAC	4P MCCB	Schneider Electric	LJF44400WU33X	1 AUX. SWITCH (SPDT TYPE)
QSF	400AF, 600V	3P MCCB	Schneider Electric	LJF36400CU33X	1 AUX. SWITCH (SPDT TYPE)
Q7	320A, 500VDC	3P DC BREAKER	ABB	T5N320TAS4	1-SHUNT TRIP (110-125VAC/DC) 1 - AUX CONTACT (1 FORM C + 1 BA)

MODULAR OUTPUT 2 WIRE+GROUND OR 3 WIRE+GROUND OR 4 WIRE+GROUND  
 SUBFEED OUTPUT (4WIRE+GROUND)  
 UPS SYSTEM OUTPUT 100kVA 208V 3PH

THIS DRAWING AND SPECIFICATIONS HEREIN ARE THE PROPERTY OF SCHNEIDER ELECTRIC AND SHALL NOT BE COPIED, REPRODUCED OR USED IN WHOLE OR IN PART, AS THE BASIS FOR THE MANUFACTURE OR SALE OF ITEMS WITHOUT WRITTEN PERMISSION FROM SCHNEIDER ELECTRIC. THIS DRAWING IS BASED UPON LATEST AVAILABLE INFORMATION AND IS SUBJECT TO CHANGE WITHOUT NOTICE.



TITLE:	SYMMETRA PX 100 INPUT: 208V 3PH, DUAL MAINS OUTPUT: 208V 100KW TOP FEED WITH PDU & XFMR SYSTEM ONE LINE DIAGRAM	DWG NO:	SY100K100F6F2T-PD-SD	REV.	6
PROJECT:	SUBMITTAL DRAWINGS	SHEET 2 OF 3	APPROVED:	B.SHERIDAN	14-JAN-16
ENGINEER:	A WARNER/F SYED	14-JAN-16	ANGLE PROJECTION	N.A.	

# Symmetra® PX 100K UPS Frame Submittal Data - w/ Modular PDU - w/208V Transformer

UPS Rating				UPS Rectifier AC Input MIB Dual Feed <sup>1</sup>								Transformer AC Input MIB Single Feed or BIB Dual Feed <sup>4</sup>								External Battery System <sup>5</sup>					AC Output	
				Voltage		Current		Recommendations <sup>3, 9, 10</sup>				Voltage	Currents		Recommendations <sup>3, 9</sup>				Nominal VDC	Battery kW	Current @ Nom. VDC	Recommendations <sup>3, 9</sup>		Current		
UPS Frame Rating	Qty of 10kW Power Modules <sup>8</sup>	kVA	kW	Input <sup>1</sup>	Output <sup>2</sup>	Full Load	Max. <sup>6</sup>	100% OCPD	100% Cable	80% OCPD	80% Cable	Input	NOM.	Max. <sup>7</sup>	100% OCPD	100% Cable	80% OCPD	80% Cable				2x 192	11	28	100% OCPD	100% Cable
100kVA/100kW 100K Frame	1	10	10	208	208	33	36	40A	1x8	45A	1x8	208	N/A	N/A	N/A	N/A	N/A	N/A	2x 192	11	28				30A	1x8
	2	20	20	208	208	66	72	80A	1x4	90A	1x4	208	N/A	N/A	N/A	N/A	N/A	N/A	2x 192	22	56	60A	1x6	56	70	
	3	30	30	208	208	100	108	110A	1x2	125A	1x1	208	N/A	N/A	N/A	N/A	N/A	N/A	2x 192	32	84	90A	1x4	84	105	
	4	40	40	208	208	133	144	150A	1x1/0	175A	1x2/0	208	N/A	N/A	N/A	N/A	N/A	N/A	2x 192	43	113	125A	1x2	112	140	
	5	50	50	208	208	166	180	200A	1x3/0	225A	1x4/0	208	N/A	N/A	N/A	N/A	N/A	N/A	2x 192	54	141	150A	1x1/0	140	175	
	6	60	60	208	208	199	216	225A	1x4/0	250A	1x250	208	N/A	N/A	N/A	N/A	N/A	N/A	2x 192	65	169	175A	1x2/0	168	210	
	7	70	70	208	208	232	252	300A	1x250	300A	1x350	208	N/A	N/A	N/A	N/A	N/A	N/A	2x 192	76	197	200A	1x3/0	196	245	
	8	80	80	208	208	266	288	300A	1x350	350A	1x400	208	N/A	N/A	N/A	N/A	N/A	N/A	2x 192	86	225	225A	1x4/0	224	280	
	9	90	90	208	208	299	324	350A	1x400	400A	1x500	208	N/A	N/A	N/A	N/A	N/A	N/A	2x 192	97	253	300A	1x250	252	315	
	10 <sup>8</sup>	<b>100</b>	<b>100</b>	<b>208</b>	<b>208</b>	<b>332</b>	<b>360</b>	<b>400A</b>	<b>1x 500</b>	<b>450A</b>	<b>2x4/0</b>	<b>208</b>	<b>366A</b>	<b>N/A</b>	<b>450A</b>	<b>2x 4/0</b>	<b>500A</b>	<b>2x 4/0</b>	<b>2x 192</b>	<b>108</b>	<b>282</b>	<b>300A</b>	<b>1x 300</b>	<b>278</b>	<b>347</b>	

[APC Symmetra® PX](#)

Notes. 208 V Modular PDU: PDPM100F6F-M

1. The rectifier Input source for dual feed must be 208V Wye 3-wire + Ground. Contact Schneider Electric if other.
2. Output is either 208V Wye 3-wire + Ground or 4-wire + GROUND.
3. Recommended cables are THHN AWG/kcmil minimum requirement in raceway, sized for 30°C environment, 75°C terminations, PFC load, and three (3) current carrying conductors per circuit. All cabling must comply with installation site conditions and any applicable Local or National Codes.
4. The transformer input source must be 208V 3-wire + Ground, and the OCPD must be capable of supporting a inrush current of 4500A.
5. Contact Schneider Electric for assistance with all external battery designs. Maximum allowed DC cabling voltage drop is 1 VDC.
6. Electronic Input Current Limit
7. This is the UPS short time rating of 125% Overload for 10 minutes. Actual short time performance may be limited by the overcurrent protective device selected.
8. For maximum scalability or future expansion it is recommended that the UPS frames be installed at their full ratings - see bold highlighted data
9. All OCPD's and cabling are by others.
10. Dual feed only for mains 1 input. See Bypass AC Input for mains 2 input.
11. OCPD = Over Current Protective Device
12. Final selections are responsibility of Engineer of record based on installed conditions and SCC/ Selective co-ordination/ arc-flash analysis.

THIS DRAWING AND SPECIFICATIONS HEREIN ARE THE PROPERTY OF SCHNEIDER ELECTRIC AND SHALL NOT BE COPIED, REPRODUCED OR USED IN WHOLE OR IN PART, AS THE BASIS FOR THE MANUFACTURE OR SALE OF ITEMS WITHOUT WRITTEN PERMISSION FROM SCHNEIDER ELECTRIC. THIS DRAWING IS BASED UPON LATEST AVAILABLE INFORMATION AND IS SUBJECT TO CHANGE WITHOUT NOTICE.



TITLE: SYMMETRA PX 100  
INPUT: 208V 3PH  
OUTPUT: 208V 100kW  
WITH PDU & XFMR  
SITE PLANNING DATA

PROJECT: SUBMITTAL DRAWINGS SHEET 3 OF 3

DWG NO: SY100K100F6FT-PD-SPD REV. 5

DRAWN:	BALAMURUGAN	29-MAY-15	ANGLE PROJECTION
ENGINEER:	A.WARNER	02-JUN-15	N.A
APPROVED:	B.SHERIDAN	02-JUN-15	