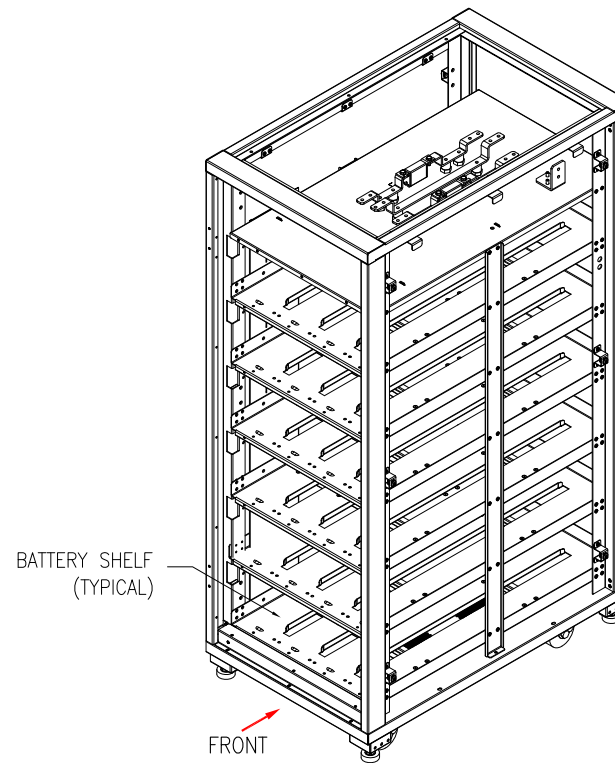


EXTERNAL ISOMETRIC VIEW



INTERNAL ISOMETRIC VIEW
(FRONT DOORS AND SIDE COVERS NOT SHOWN).

NOTES:

1. INSTALLATION SHALL COMPLY WITH ALL APPLICABLE NATIONAL, STATE AND LOCAL ELECTRICAL REGULATIONS.
2. REFER TO PRODUCT DOCUMENTATION FOR ADDITIONAL DETAILS PRIOR TO INSTALLATION AND SITE PREPARATION WORK.
3. BATTERY IS NOT PART OF THE SKU.

THIS DRAWING AND SPECIFICATIONS HEREIN ARE THE PROPERTY OF SCHNEIDER ELECTRIC AND SHALL NOT BE COPIED, REPRODUCED OR USED IN WHOLE OR IN PART, AS THE BASIS FOR THE MANUFACTURE OR SALE OF ITEMS WITHOUT WRITTEN PERMISSION FROM SCHNEIDER ELECTRIC. THIS DRAWING IS BASED UPON LATEST AVAILABLE INFORMATION AND IS SUBJECT TO CHANGE WITHOUT NOTICE.

Schneider
Electric

TITLE:
EASY UPS 3S
EMPTY MODULAR BATTERY CABINET
ISOMETRIC VIEW

PROJECT: SUBMITTAL DRAWINGS SHEET 1 OF 4

DWG NO: E3SXR6

DRAWN: JAYAPRAKASH 24-JUL-19

ENGINEER: Lily ZHU 26-JUL-19

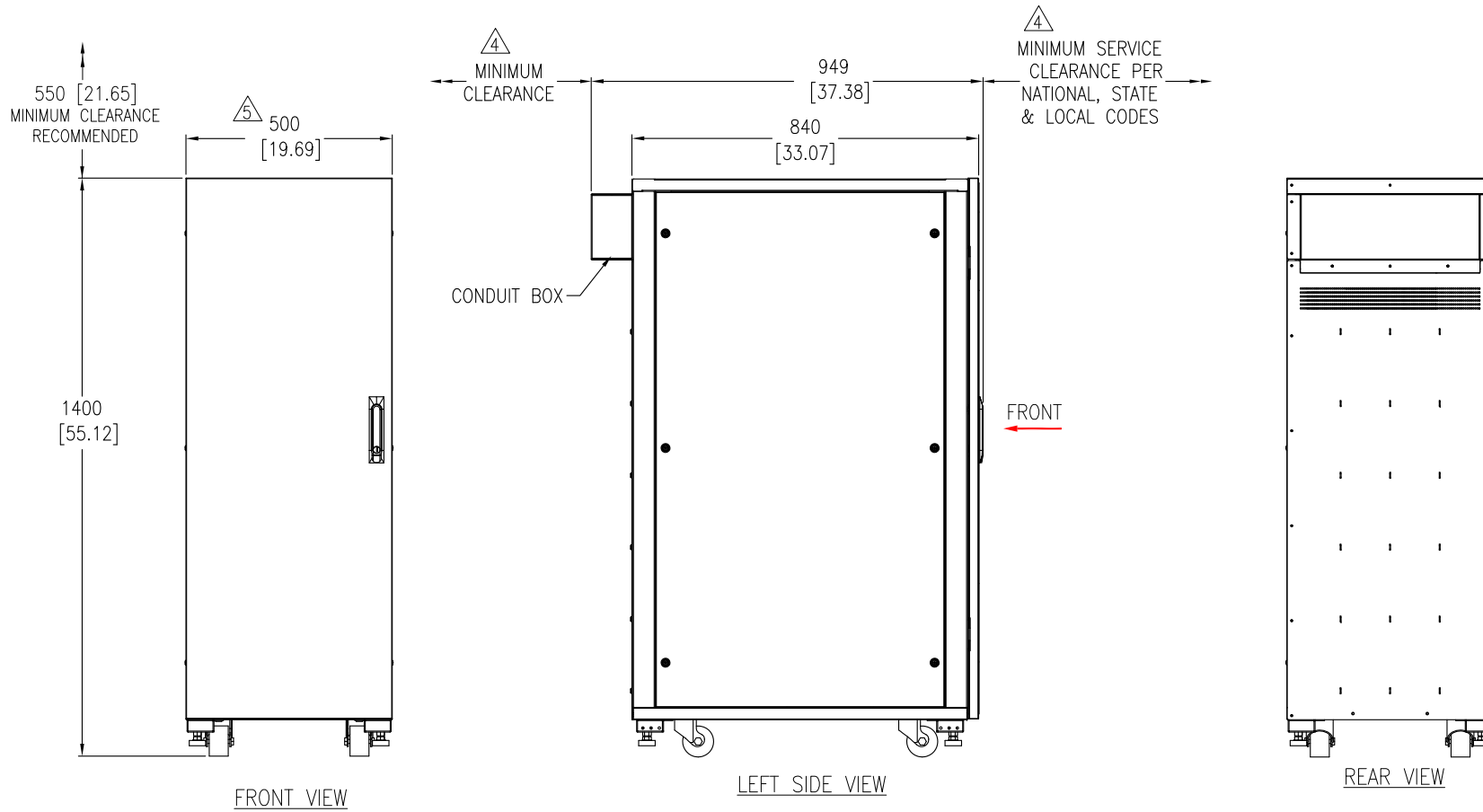
APPROVED: Wayne LI 26-JUL-19

REV. 0

FIRST

ANGLE

PROJECTION



NOTES:

1. INSTALLATION SHALL COMPLY WITH ALL APPLICABLE NATIONAL, STATE AND LOCAL ELECTRICAL REGULATIONS.
2. REFER TO PRODUCT DOCUMENTATION FOR ADDITIONAL DETAILS PRIOR TO INSTALLATION AND SITE PREPARATION WORK.
3. ALL DIMENSIONS ARE IN MILLIMETERS [INCHES].
- △4. FRONT ACCESS REQUIRED FOR SERVICE. MINIMUM REQUIRED FRONT CLEARANCE IS 980mm [38.58 Inches], REAR CLEARANCE REQUIRED IS 150mm [5.9 Inches].
- △5. DIMENSION EXCLUDES SKIN AND SCREW PROJECTIONS.
6. THE WEIGHT OF THE UNIT (WITHOUT BATTERIES) IS 125kg [275.6 lb].
WEIGHT OF ONE BATTERY STRING IS 28 kg [61.73 lb]. BATTERY STRING IS NOT PART OF THIS SKU.
7. OPERATING TEMPERATURE: 0°C TO 40°C [32°F TO 104°F]
TO OPTIMIZE THE LIFE OF BATTERY, IT IS RECOMMENDED TO MAINTAIN 25°C [77°F].
8. COLOR: RAL 9003 WHITE.
9. PROTECTION CLASS – IP20
- △10. INPUT POWER/COMMUNICATION CABLE ENTRY IS FROM REAR OF THE UNIT.

THIS DRAWING AND SPECIFICATIONS HEREIN ARE THE PROPERTY OF SCHNEIDER ELECTRIC AND SHALL NOT BE COPIED, REPRODUCED OR USED IN WHOLE OR IN PART, AS THE BASIS FOR THE MANUFACTURE OR SALE OF ITEMS WITHOUT WRITTEN PERMISSION FROM SCHNEIDER ELECTRIC. THIS DRAWING IS BASED UPON LATEST AVAILABLE INFORMATION AND IS SUBJECT TO CHANGE WITHOUT NOTICE.

Schneider
Electric

TITLE:
EASY UPS 3S
EMPTY MODULAR BATTERY CABINET
GENERAL ARRANGEMENT

DWG NO: E3SXR6

REV. 0

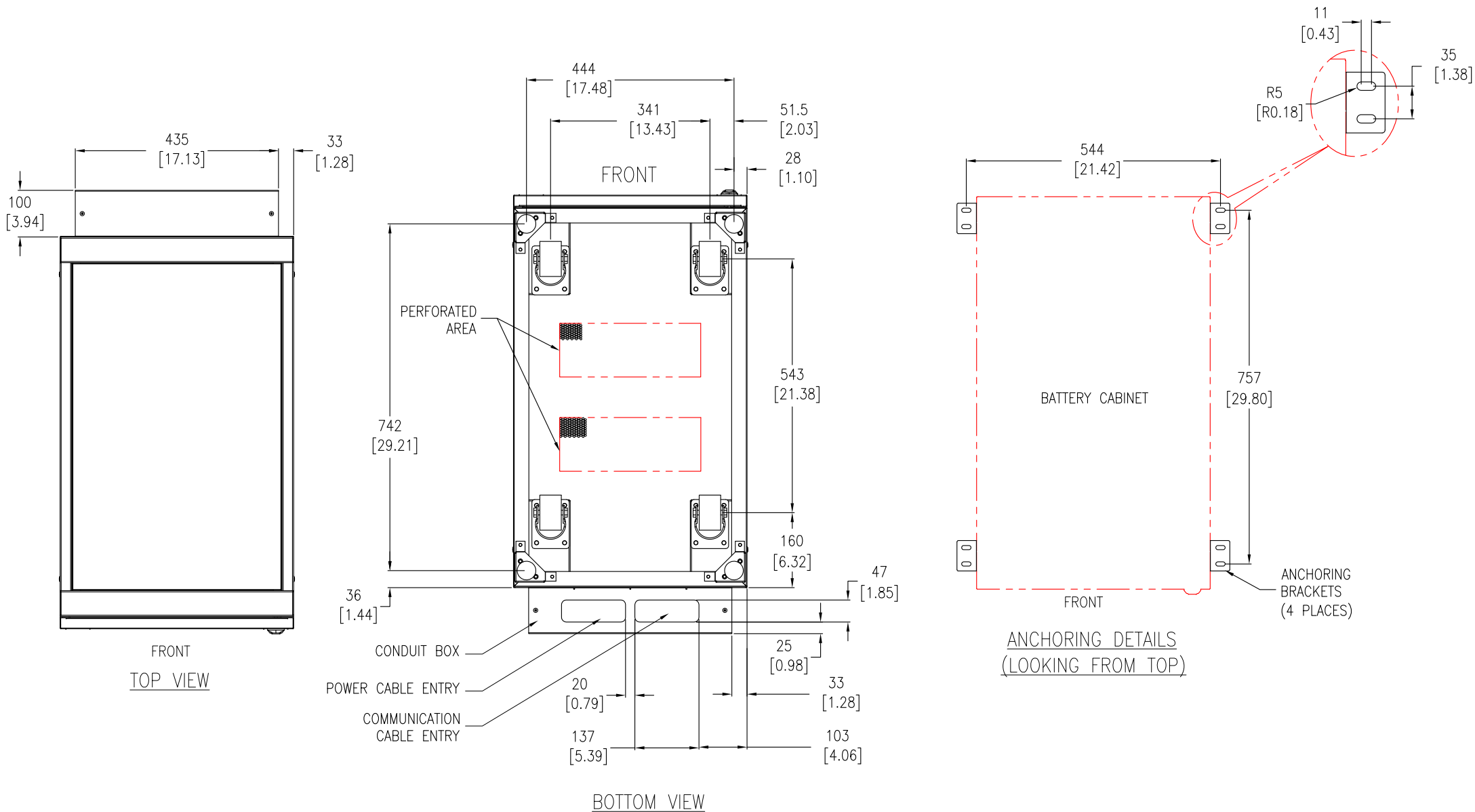
DRAWN: JAYAPRAKASH 24-JUL-19

ENGINEER: Lily ZHU 26-JUL-19

APPROVED: Wayne LI 26-JUL-19

PROJECT: SUBMITTAL DRAWINGS SHEET 2 OF 4

FIRST
ANGLE
PROJECTION



NOTES:

1. INSTALLATION SHALL COMPLY WITH ALL APPLICABLE NATIONAL, STATE AND LOCAL ELECTRICAL REGULATIONS.
2. REFER TO PRODUCT DOCUMENTATION FOR ADDITIONAL DETAILS PRIOR TO INSTALLATION AND SITE PREPARATION WORK.
3. ALL DIMENSIONS ARE IN MILLIMETERS [INCHES].
4. INPUT POWER/ COMMUNICATION CABLE ENTRY IS THROUGH CONDUIT BOX.

THIS DRAWING AND SPECIFICATIONS HEREIN ARE THE PROPERTY OF SCHNEIDER ELECTRIC AND SHALL NOT BE COPIED, REPRODUCED OR USED IN WHOLE OR IN PART, AS THE BASIS FOR THE MANUFACTURE OR SALE OF ITEMS WITHOUT WRITTEN PERMISSION FROM SCHNEIDER ELECTRIC. THIS DRAWING IS BASED UPON LATEST AVAILABLE INFORMATION AND IS SUBJECT TO CHANGE WITHOUT NOTICE.

Schneider Electric

TITLE:
EASY UPS 3S
EMPTY MODULAR BATTERY CABINET
TOP AND BOTTOM VIEW & ANCHORING DETAILS

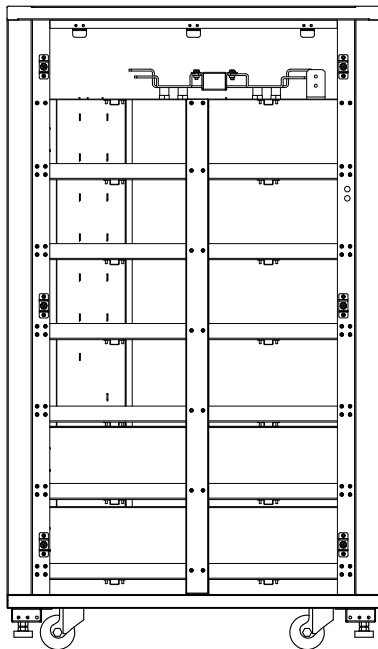
PROJECT: SUBMITTAL DRAWINGS SHEET 3 OF 4

DWG NO: E3SXR6

DRAWN: JAYAPRAKASH	24-JUL-19	FIRST ANGLE PROJECTION
ENGINEER: Lily ZHU	26-JUL-19	
APPROVED: Wayne LI	26-JUL-19	

REV. 0

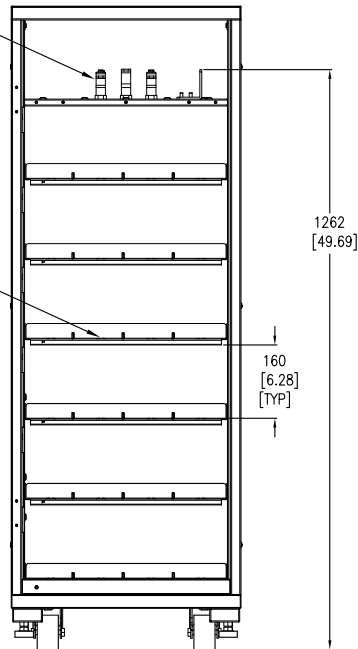
FRONT
→



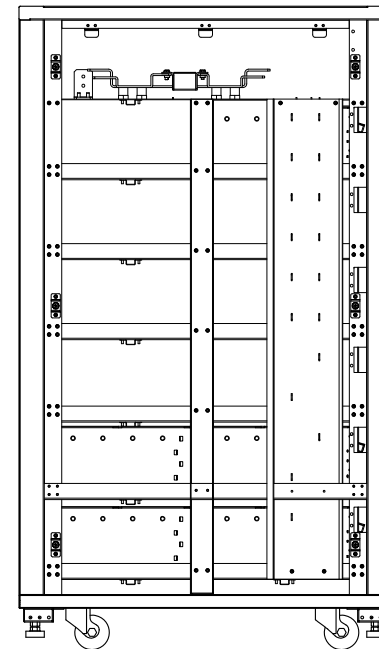
RIGHT SIDE VIEW-INTERNAL

CONNECTION BUSBARS

BATTERY SHELF

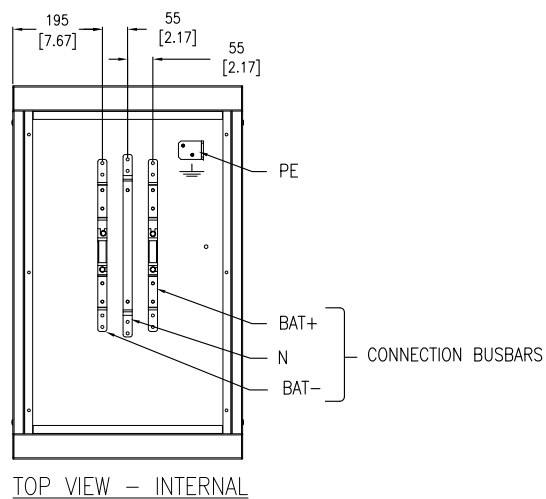


FRONT VIEW - INTERNAL

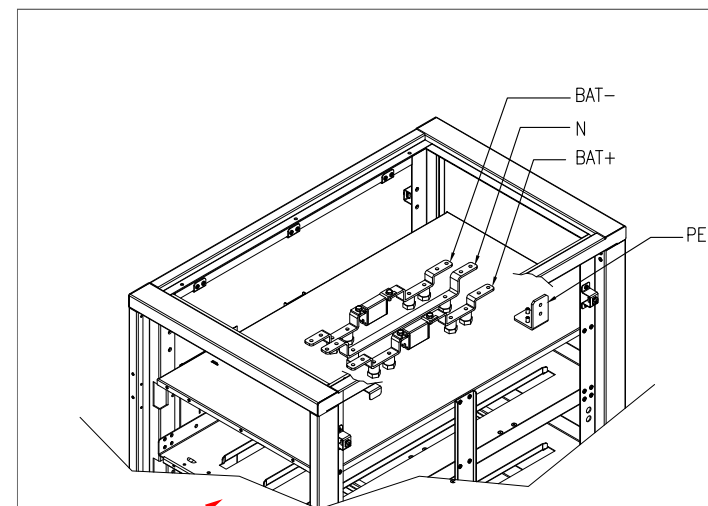


LEFT SIDE VIEW-INTERNAL

FRONT
←



TOP VIEW - INTERNAL



FRONT
→

NOTES:

1. INSTALLATION SHALL COMPLY WITH ALL APPLICABLE NATIONAL, STATE AND LOCAL ELECTRICAL REGULATIONS.
2. REFER TO PRODUCT DOCUMENTATION FOR ADDITIONAL DETAILS PRIOR TO INSTALLATION AND SITE PREPARATION WORK.
3. ALL DIMENSIONS ARE IN MILLIMETERS [INCHES].
4. SOME STRUCTURAL DETAILS HAVE BEEN OMITTED FOR THE PURPOSE OF CLARITY.

THIS DRAWING AND SPECIFICATIONS HEREIN ARE THE PROPERTY OF SCHNEIDER ELECTRIC AND SHALL NOT BE COPIED, REPRODUCED OR USED IN WHOLE OR IN PART, AS THE BASIS FOR THE MANUFACTURE OR SALE OF ITEMS WITHOUT WRITTEN PERMISSION FROM SCHNEIDER ELECTRIC. THIS DRAWING IS BASED UPON LATEST AVAILABLE INFORMATION AND IS SUBJECT TO CHANGE WITHOUT NOTICE.

Schneider
Electric

TITLE:
EASY UPS 3S
EMPTY MODULAR BATTERY CABINET
INTERNAL VIEWS

PROJECT: SUBMITTAL DRAWINGS SHEET 4 OF 4

DWG NO: E3SXR6

DRAWN:	JAYAPRAKASH	24-JUL-19
ENGINEER:	Lily ZHU	26-JUL-19
APPROVED:	Wayne LI	26-JUL-19

REV. 0
FIRST
ANGLE
PROJECTION