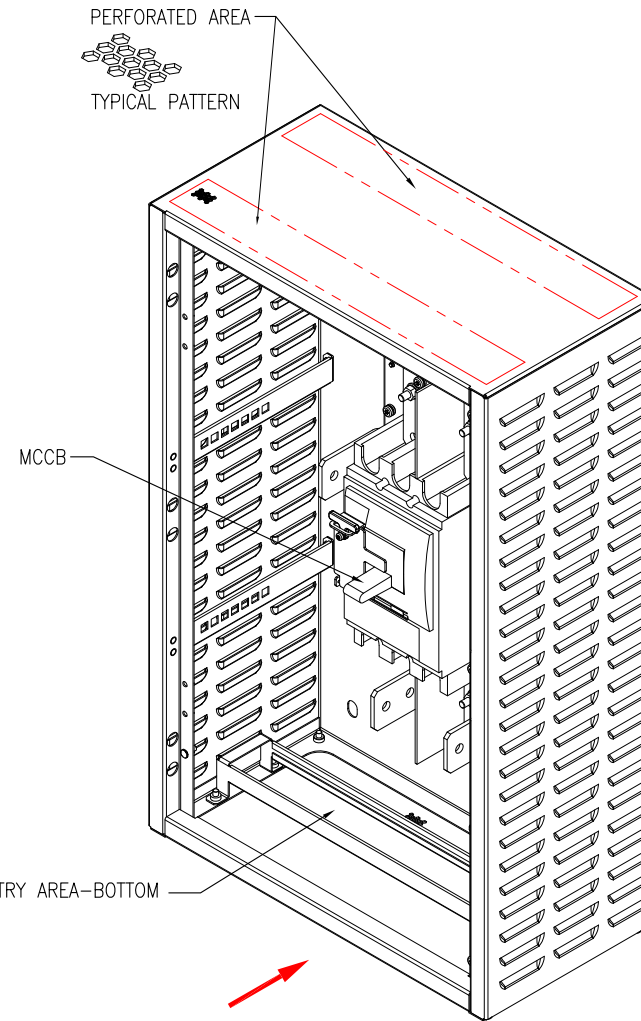


FRONT

EXTERNAL ISOMETRIC VIEW



PERFORATED AREA
TYPICAL PATTERN

MCCB

CABLE ENTRY AREA-BOTTOM

FRONT

INTERNAL ISOMETRIC VIEW
(FRONT DOOR NOT SHOWN)

SPECIFICATIONS:

Circuit breaker	LV438279
Maximum configuration	100-150 kW: 4 hour runtime 200 kW: 1 hour runtime
Battery Type	Lead-acid, Lithium-Ion
Maximum short circuit level (kA)	35

NOTES:

1. INSTALLATION SHALL COMPLY WITH ALL APPLICABLE NATIONAL, STATE AND LOCAL ELECTRICAL REGULATIONS.
2. REFER TO PRODUCT DOCUMENTATION FOR ADDITIONAL DETAILS PRIOR TO INSTALLATION AND SITE PREPARATION WORK.

THIS DRAWING AND SPECIFICATIONS HEREIN ARE THE PROPERTY OF SCHNEIDER ELECTRIC AND SHALL NOT BE COPIED, REPRODUCED OR USED IN WHOLE OR IN PART, AS THE BASIS FOR THE MANUFACTURE OR SALE OF ITEMS WITHOUT WRITTEN PERMISSION FROM SCHNEIDER ELECTRIC. THIS DRAWING IS BASED UPON LATEST AVAILABLE INFORMATION AND IS SUBJECT TO CHANGE WITHOUT NOTICE.

Schneider Electric

TITLE: GALAXY VS
BATTERY BREAKER BOX 100-200kW, 400V
ISOMETRIC VIEW

DWG NO: GVSBBB100K200H

REV. 0

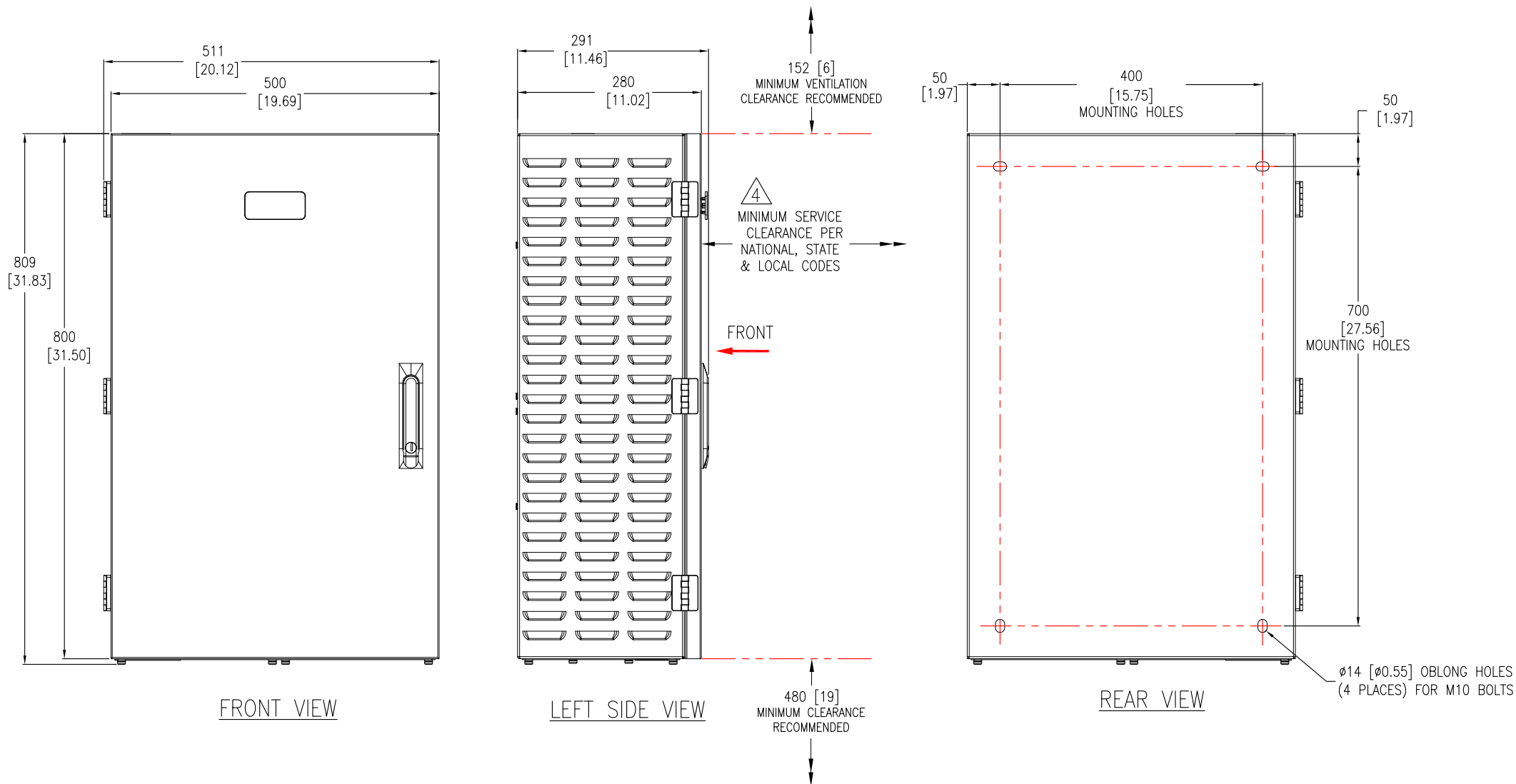
DRAWN: JAYAPRAKASH 22-NOV-18

ENGINEER: TERRY 22-NOV-18

APPROVED: JIACHEN 22-NOV-18

PROJECT: SUBMITTAL DRAWINGS SHEET 1 OF 4

FIRST
ANGLE
PROJECTION



- NOTES:**
1. INSTALLATION SHALL COMPLY WITH ALL APPLICABLE NATIONAL, STATE AND LOCAL ELECTRICAL REGULATIONS.
 2. REFER TO PRODUCT DOCUMENTATION FOR ADDITIONAL DETAILS PRIOR TO INSTALLATION AND SITE PREPARATION WORK.
 3. ALL DIMENSIONS ARE IN MILLIMETERS [INCHES].
 - △ 4. FRONT ACCESS REQUIRED FOR SERVICE.
 5. CABLE ENTRY IS FROM BOTTOM OF THE CABINET.
 6. THE WEIGHT OF THE UNIT IS 35 kg [77.2 lb].
 7. OPERATING TEMPERATURE: 0°C TO 40°C [32°F TO 104°F]
 8. COLOR: RAL 9003, GLOSS LEVEL 85%.
 9. PROTECTION CLASS: IP20.

THIS DRAWING AND SPECIFICATIONS HEREIN ARE THE PROPERTY OF SCHNEIDER ELECTRIC AND SHALL NOT BE COPIED, REPRODUCED OR USED IN WHOLE OR IN PART, AS THE BASIS FOR THE MANUFACTURE OR SALE OF ITEMS WITHOUT WRITTEN PERMISSION FROM SCHNEIDER ELECTRIC. THIS DRAWING IS BASED UPON LATEST AVAILABLE INFORMATION AND IS SUBJECT TO CHANGE WITHOUT NOTICE.

Schneider Electric

TITLE: GALAXY VS
BATTERY BREAKER BOX 100-200kW, 400V
GENERAL ARRANGEMENT

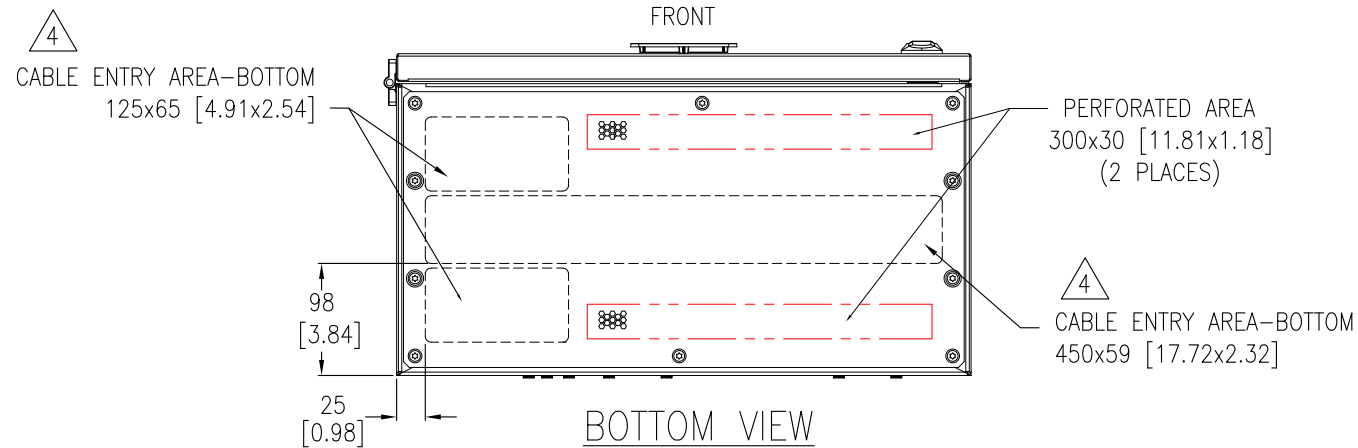
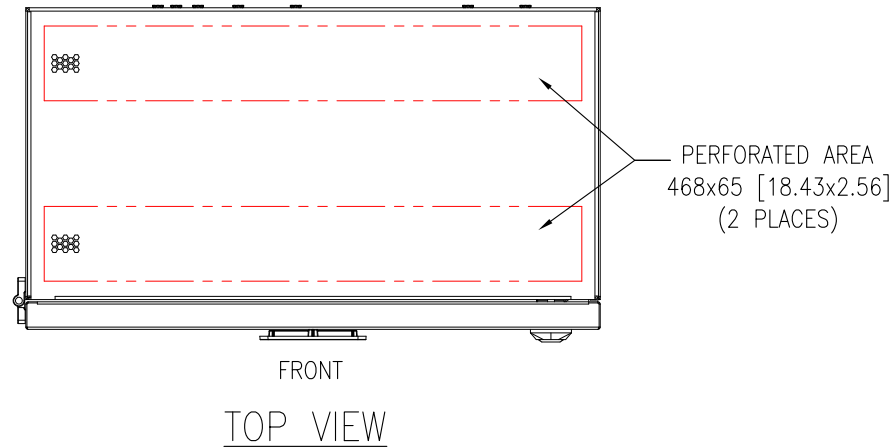
DWG NO: GVSBBB100K200H

REV. 0

PROJECT: SUBMITTAL DRAWINGS SHEET 2 OF 4

DRAWN:	JAYAPRAKASH	22-NOV-18
ENGINEER:	TERRY	22-NOV-18
APPROVED:	JIACHEN	22-NOV-18

FIRST
ANGLE
PROJECTION



NOTES:

1. INSTALLATION SHALL COMPLY WITH ALL APPLICABLE NATIONAL, STATE AND LOCAL ELECTRICAL REGULATIONS.
2. REFER TO PRODUCT DOCUMENTATION FOR ADDITIONAL DETAILS PRIOR TO INSTALLATION AND SITE PREPARATION WORK.
3. ALL DIMENSIONS ARE IN MILLIMETERS [INCHES].
- △ 4. DRILL/PUNCH HOLES IN PLATE. REMOVE PLATE FROM CABINET BEFORE DRILLING/PUNCHING.
USE APPROPRIATE CABLE PROTECTION AROUND HOLE BEFORE CABLING IS INSTALLED.

THIS DRAWING AND SPECIFICATIONS HEREIN ARE THE PROPERTY OF SCHNEIDER ELECTRIC AND SHALL NOT BE COPIED, REPRODUCED OR USED IN WHOLE OR IN PART, AS THE BASIS FOR THE MANUFACTURE OR SALE OF ITEMS WITHOUT WRITTEN PERMISSION FROM SCHNEIDER ELECTRIC. THIS DRAWING IS BASED UPON LATEST AVAILABLE INFORMATION AND IS SUBJECT TO CHANGE WITHOUT NOTICE.

Schneider
Electric

TITLE: GALAXY VS
BATTERY BREAKER BOX 100-200kW, 400V
TOP AND BOTTOM VIEWS

DWG NO: GVSBBB100K200H

REV. 0

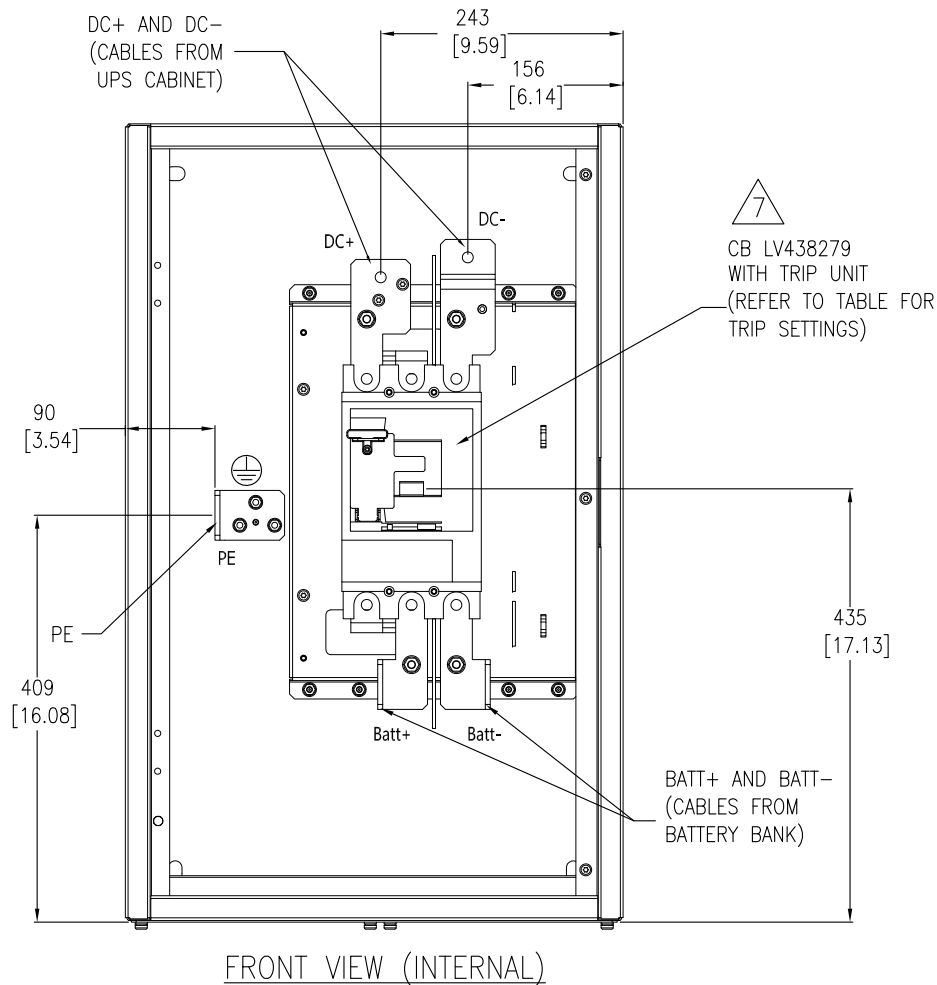
DRAWN: JAYAPRAKASH 22-NOV-18

ENGINEER: TERRY 22-NOV-18

APPROVED: JIACHEN 22-NOV-18

PROJECT: SUBMITTAL DRAWINGS SHEET 3 OF 4

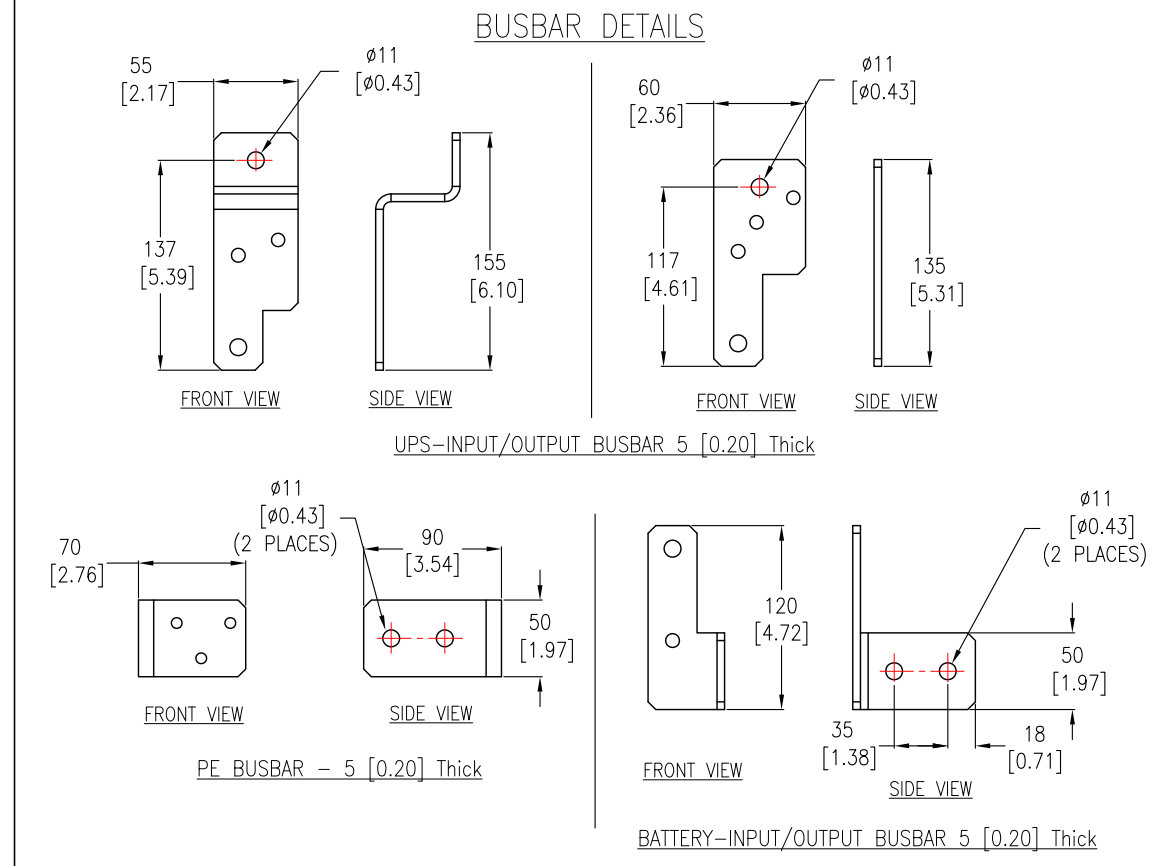
FIRST
ANGLE
PROJECTION



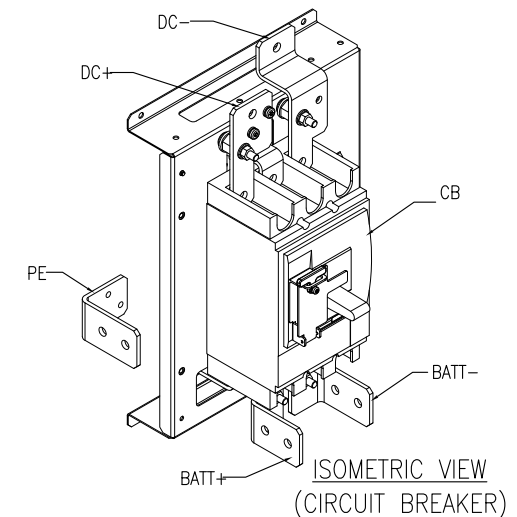
Voltage (V)	UPS Rating (kVA)	Trip Setting (A)	
		I _r	I _m
380/400/415	100	420	1500 (fixed)
	150	420	
	200	600	

NOTES:

1. INSTALLATION SHALL COMPLY WITH ALL APPLICABLE NATIONAL, STATE AND LOCAL ELECTRICAL REGULATIONS.
2. REFER TO PRODUCT DOCUMENTATION FOR ADDITIONAL DETAILS PRIOR TO INSTALLATION AND SITE PREPARATION WORK.
3. ALL DIMENSIONS ARE IN MILLIMETERS [INCHES].
- △ 4. CABLE SIZES ARE BASED ON TABLE B.52.5 OF IEC 60364-5-52 WITH THE FOLLOWING ASSERTIONS:
 - a) 90°C CONDUCTORS.
 - b) AN AMBIENT TEMPERATURE OF 30°C [86°F].
 - c) USE OF COPPER CONDUCTORS.
 - d) INSTALLATION METHOD 'c'.
 IF THE AMBIENT TEMPERATURE IS GREATER THAN 30°C [86°F], LARGER CONDUCTORS ARE TO BE SELECTED IN ACCORDANCE WITH THE CORRECTION FACTORS OF THE IEC.
5. SOME STRUCTURAL DETAILS HAVE BEEN OMITTED FOR THE PURPOSE OF CLARITY.
6. FOR CONTROL INTERFACE DETAILS, REFER TO SYSTEM WIRING DIAGRAM.
- △ 7. REFER TO ABOVE TABLE FOR TRIP SETTINGS.



Recommended Cable Sizes			
UPS Rating		100-150kVA	200kVA
Copper	Battery +/- (mm ²)	2x70mm ²	2x120mm ²
	Battery PE (mm ²)	70mm ²	120mm ²
Aluminium	Battery +/- (mm ²)	2x120mm ²	NA
	Battery PE (mm ²)	120mm ²	NA



THIS DRAWING AND SPECIFICATIONS HEREIN ARE THE PROPERTY OF SCHNEIDER ELECTRIC AND SHALL NOT BE COPIED, REPRODUCED OR USED IN WHOLE OR IN PART, AS THE BASIS FOR THE MANUFACTURE OR SALE OF ITEMS WITHOUT WRITTEN PERMISSION FROM SCHNEIDER ELECTRIC. THIS DRAWING IS BASED UPON LATEST AVAILABLE INFORMATION AND IS SUBJECT TO CHANGE WITHOUT NOTICE.

Schneider Electric

TITLE: GALAXY VS BATTERY BREAKER BOX 100-200kW, 400V INTERNAL VIEW, BUSBARS & INTERFACE DETAILS

PROJECT: SUBMITTAL DRAWINGS SHEET 4 OF 4

DWG NO: GVSBBB100K200H

ENGINEER: TERRY

APPROVED: JIACHEN

REV. 0

FIRST ANGLE PROJECTION