

EXTERNAL ISOMETRIC VIEW

INTERNAL ISOMETRIC VIEW
(FRONT DOOR NOT SHOWN)

SPECIFICATIONS:

Circuit breaker	LV438980 (LV438218, LV438245)
Maximum configuration	4 hour runtime
Battery Type	Lead-acid, Lithium-Ion
Maximum short circuit level (kA)	35

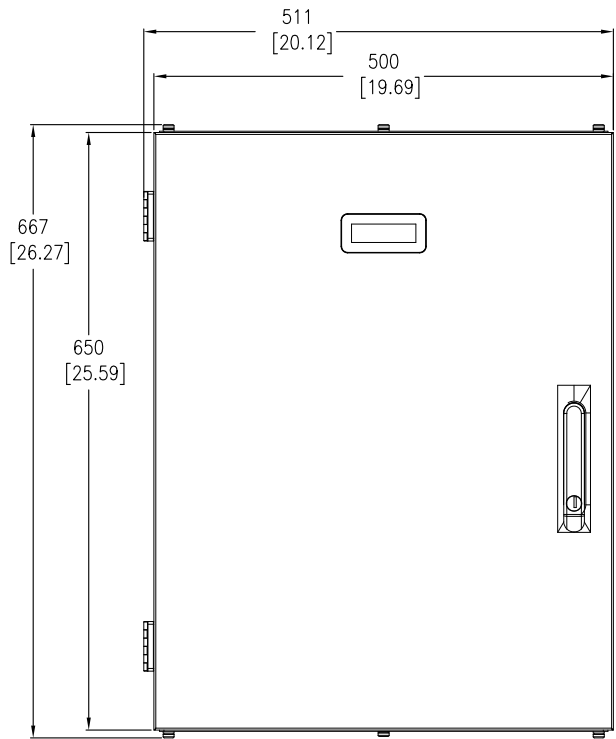
- NOTES:**
1. INSTALLATION SHALL COMPLY WITH ALL APPLICABLE NATIONAL, STATE AND LOCAL ELECTRICAL REGULATIONS.
 2. REFER TO PRODUCT DOCUMENTATION FOR ADDITIONAL DETAILS PRIOR TO INSTALLATION AND SITE PREPARATION WORK.

THIS DRAWING AND SPECIFICATIONS HEREIN ARE THE PROPERTY OF SCHNEIDER ELECTRIC AND SHALL NOT BE COPIED, REPRODUCED OR USED IN WHOLE OR IN PART, AS THE BASIS FOR THE MANUFACTURE OR SALE OF ITEMS WITHOUT WRITTEN PERMISSION FROM SCHNEIDER ELECTRIC. THIS DRAWING IS BASED UPON LATEST AVAILABLE INFORMATION AND IS SUBJECT TO CHANGE WITHOUT NOTICE.

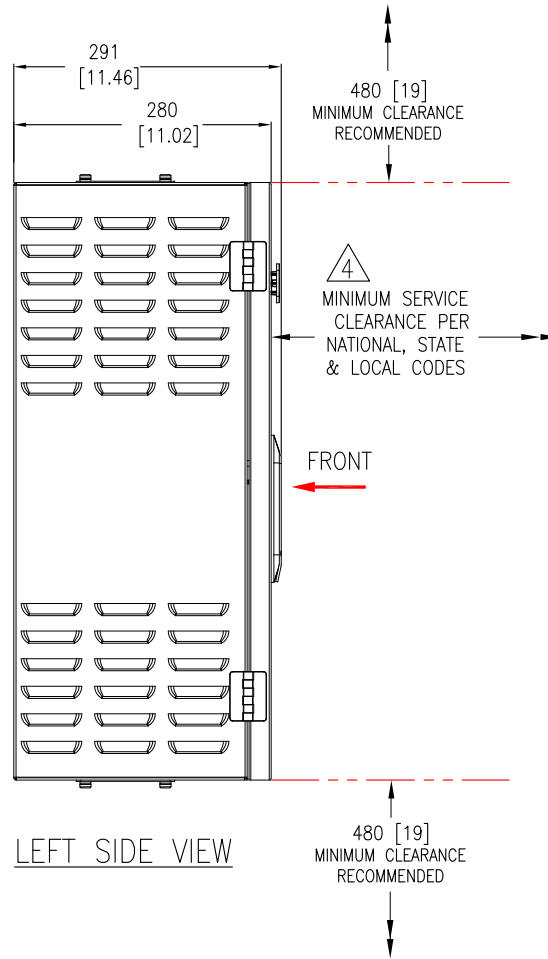


TITLE: GALAXY VS BATTERY BREAKER BOX 20-80kW, 400V ISOMETRIC VIEW
 PROJECT: SUBMITTAL DRAWINGS SHEET 1 OF 4

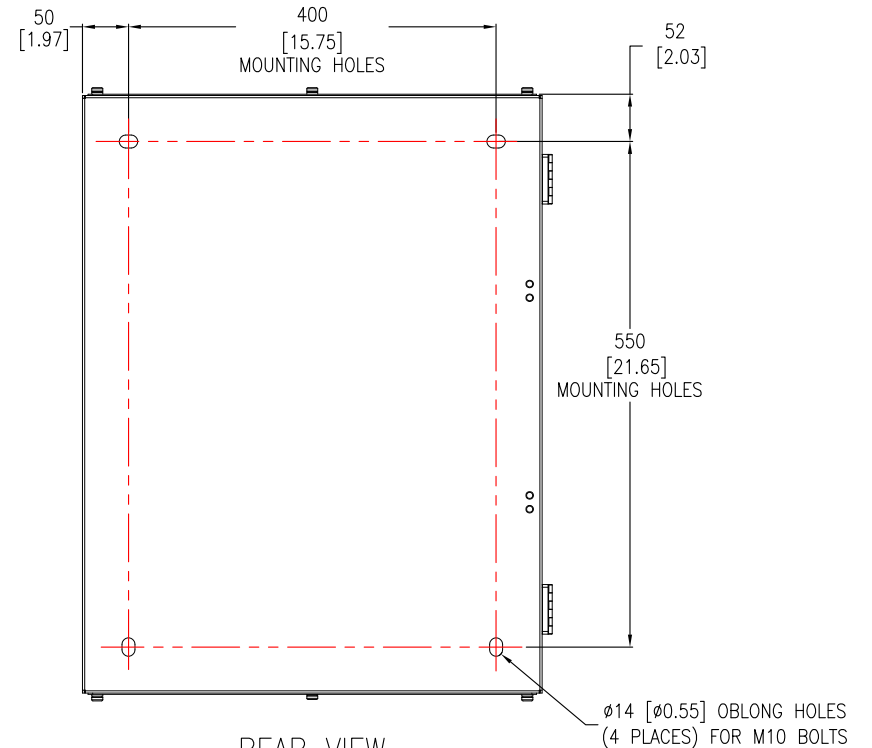
DWG NO:	GVSBBB20K80H	REV.	0
DRAWN:	JAYAPRAKASH	22-NOV-18	FIRST ANGLE PROJECTION
ENGINEER:	TERRY	22-NOV-18	
APPROVED:	JIACHEN	22-NOV-18	



FRONT VIEW



LEFT SIDE VIEW



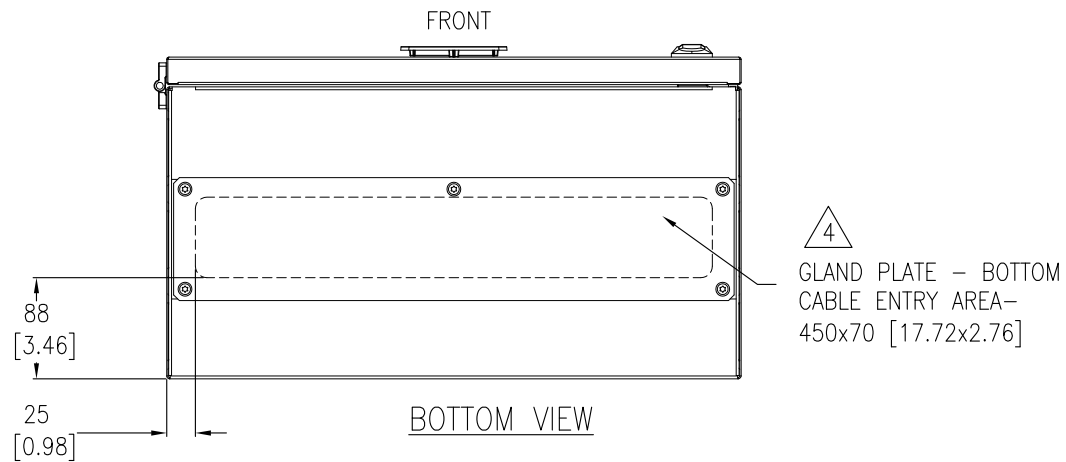
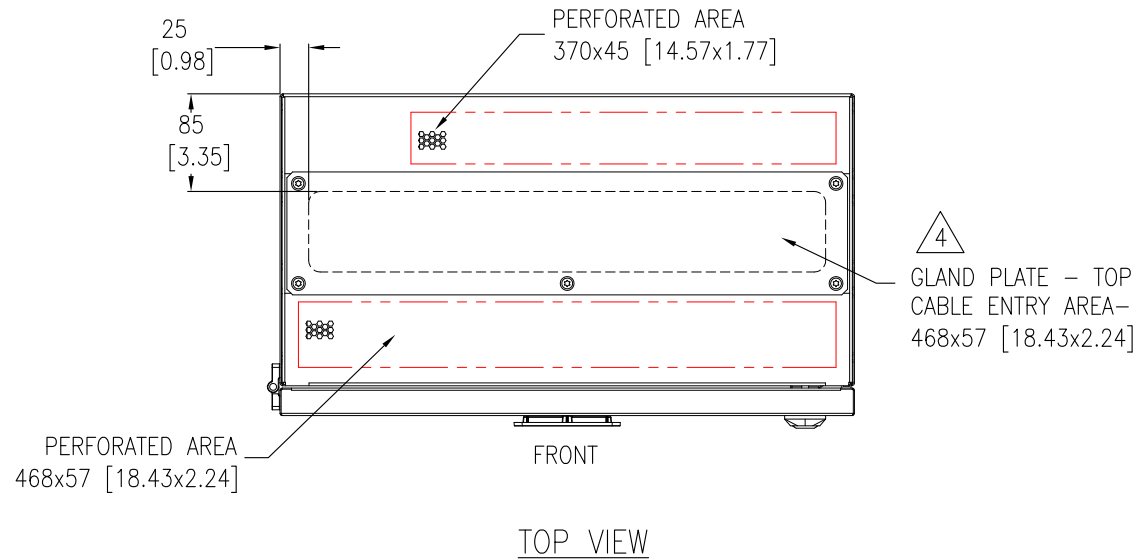
REAR VIEW

- NOTES:**
1. INSTALLATION SHALL COMPLY WITH ALL APPLICABLE NATIONAL, STATE AND LOCAL ELECTRICAL REGULATIONS.
 2. REFER TO PRODUCT DOCUMENTATION FOR ADDITIONAL DETAILS PRIOR TO INSTALLATION AND SITE PREPARATION WORK.
 3. ALL DIMENSIONS ARE IN MILLIMETERS [INCHES].
 - △ 4. FRONT ACCESS REQUIRED FOR SERVICE.
 5. CONNECT UPS CABLE FROM TOP OR BOTTOM, CONNECT BATTERY CABLE ONLY FROM BOTTOM.
 6. THE WEIGHT OF THE UNIT IS 25 kg [55 lb].
 7. OPERATING TEMPERATURE: 0°C TO 40°C [32°F TO 104°F]
 8. COLOR: RAL 9003, GLOSS LEVEL 85%.
 9. PROTECTION CLASS: IP20.

THIS DRAWING AND SPECIFICATIONS HEREIN ARE THE PROPERTY OF SCHNEIDER ELECTRIC AND SHALL NOT BE COPIED, REPRODUCED OR USED IN WHOLE OR IN PART, AS THE BASIS FOR THE MANUFACTURE OR SALE OF ITEMS WITHOUT WRITTEN PERMISSION FROM SCHNEIDER ELECTRIC. THIS DRAWING IS BASED UPON LATEST AVAILABLE INFORMATION AND IS SUBJECT TO CHANGE WITHOUT NOTICE.



TITLE: GALAXY VS BATTERY BREAKER BOX 20-80kW, 400V GENERAL ARRANGEMENT		DWG NO: GVSBBB20K80H	REV. 0
PROJECT: SUBMITTAL DRAWINGS SHEET 2 OF 4		DRAWN: JAYAPRAKASH	22-NOV-18
		ENGINEER: TERRY	22-NOV-18
		APPROVED: JIACHEN	22-NOV-18
			FIRST ANGLE PROJECTION



NOTES:

1. INSTALLATION SHALL COMPLY WITH ALL APPLICABLE NATIONAL, STATE AND LOCAL ELECTRICAL REGULATIONS.
2. REFER TO PRODUCT DOCUMENTATION FOR ADDITIONAL DETAILS PRIOR TO INSTALLATION AND SITE PREPARATION WORK.
3. ALL DIMENSIONS ARE IN MILLIMETERS [INCHES].
- △ 4. DRILL/PUNCH HOLES IN PLATE. REMOVE PLATE FROM CABINET BEFORE DRILLING/PUNCHING. USE APPROPRIATE CABLE PROTECTION AROUND HOLE BEFORE CABLING IS INSTALLED.

THIS DRAWING AND SPECIFICATIONS HEREIN ARE THE PROPERTY OF SCHNEIDER ELECTRIC AND SHALL NOT BE COPIED, REPRODUCED OR USED IN WHOLE OR IN PART, AS THE BASIS FOR THE MANUFACTURE OR SALE OF ITEMS WITHOUT WRITTEN PERMISSION FROM SCHNEIDER ELECTRIC. THIS DRAWING IS BASED UPON LATEST AVAILABLE INFORMATION AND IS SUBJECT TO CHANGE WITHOUT NOTICE.



TITLE: GALAXY VS BATTERY BREAKER BOX 20-80kW, 400V TOP AND BOTTOM VIEWS

DWG NO: GVSBBB20K80H

REV. 0

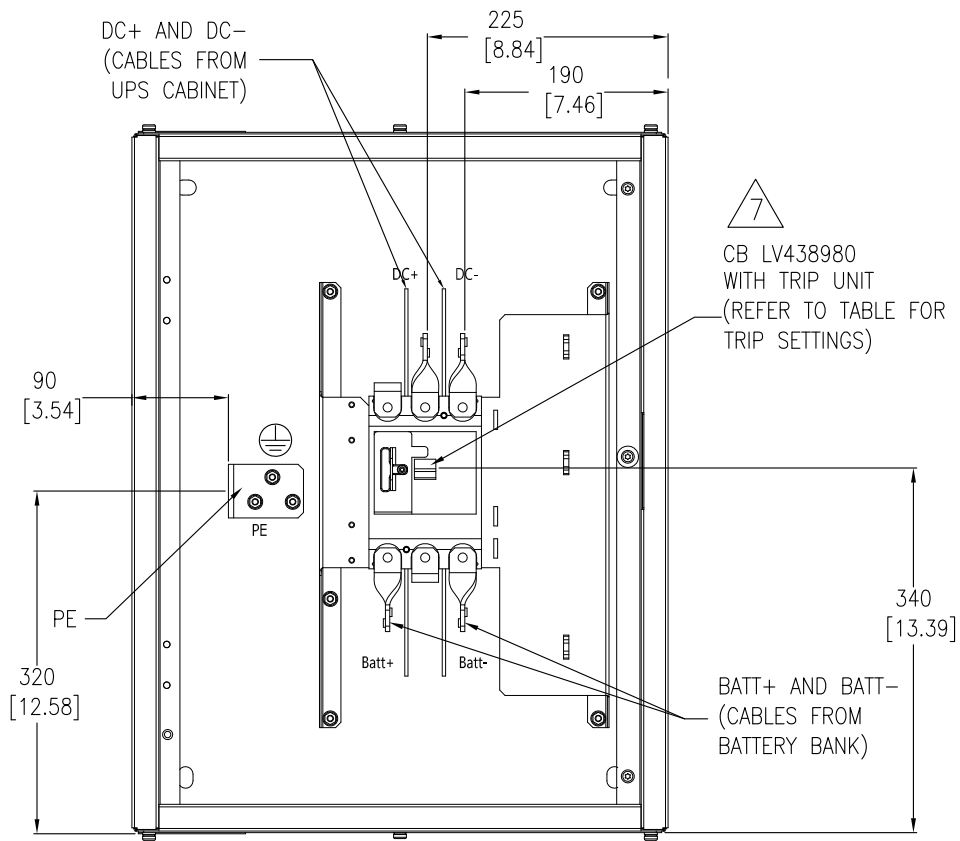
DRAWN: JAYAPRAKASH 22-NOV-18

ENGINEER: TERRY 22-NOV-18

APPROVED: JIACHEN 22-NOV-18

PROJECT: SUBMITTAL DRAWINGS SHEET 3 OF 4

FIRST ANGLE PROJECTION



FRONT VIEW (INTERNAL)



Voltage (V)	UPS Rating (kVA)	Trip Setting (A)	
		I _r	I _m
380/400/415	20	175	1250 (fixed)
	30	175	
	40	175	
	50	175	
	60	175	
	80	225	



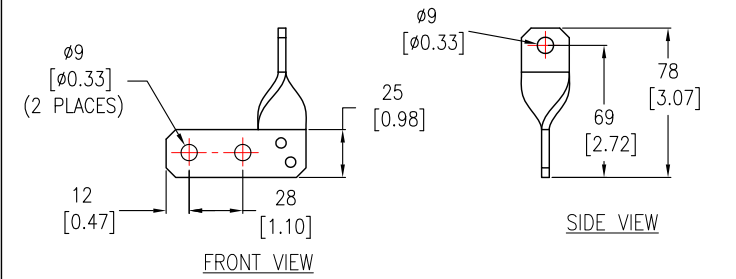
Recommended Cable Sizes

UPS Rating		20-60kVA	80kVA
Copper	Battery +/- (mm ²)	50mm ²	70mm ²
	Battery PE (mm ²)	25mm ²	35mm ²
Aluminium	Battery +/- (mm ²)	70mm ²	NA
	Battery PE (mm ²)	35mm ²	NA

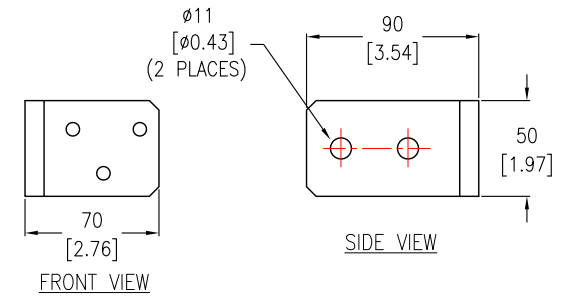
NOTES:

- INSTALLATION SHALL COMPLY WITH ALL APPLICABLE NATIONAL, STATE AND LOCAL ELECTRICAL REGULATIONS.
- REFER TO PRODUCT DOCUMENTATION FOR ADDITIONAL DETAILS PRIOR TO INSTALLATION AND SITE PREPARATION WORK.
- ALL DIMENSIONS ARE IN MILLIMETERS [INCHES].
- CABLE SIZES ARE BASED ON TABLE B.52.5 OF IEC 60364-5-52 WITH THE FOLLOWING ASSERTIONS:
 - 90°C CONDUCTORS.
 - AN AMBIENT TEMPERATURE OF 30°C [86°F].
 - USE OF COPPER CONDUCTORS.
 - INSTALLATION METHOD 'c'
 IF THE AMBIENT TEMPERATURE IS GREATER THAN 30°C [86°F], LARGER CONDUCTORS ARE TO BE SELECTED IN ACCORDANCE WITH THE CORRECTION FACTORS OF THE IEC.
- SOME STRUCTURAL DETAILS HAVE BEEN OMITTED FOR THE PURPOSE OF CLARITY.
- FOR CONTROL INTERFACE DETAILS, REFER TO SYSTEM WIRING DIAGRAM.
- REFER TO ABOVE TABLE FOR TRIP SETTINGS.

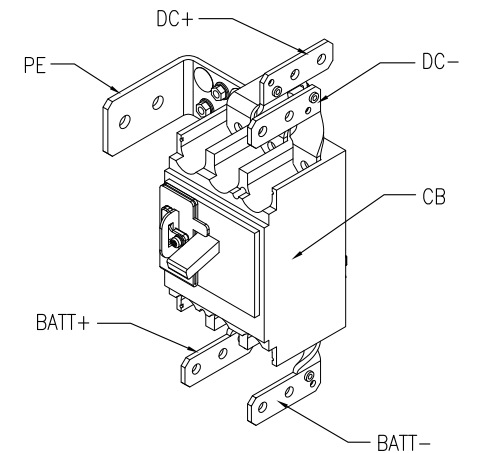
BUSBAR DETAILS



BATTERY/UPS-INPUT/OUTPUT BUSBAR 4 [0.16] Thick



PE BUSBAR - 5 [0.20] Thick



ISOMETRIC VIEW (CIRCUIT BREAKER)

THIS DRAWING AND SPECIFICATIONS HEREIN ARE THE PROPERTY OF SCHNEIDER ELECTRIC AND SHALL NOT BE COPIED, REPRODUCED OR USED IN WHOLE OR IN PART, AS THE BASIS FOR THE MANUFACTURE OR SALE OF ITEMS WITHOUT WRITTEN PERMISSION FROM SCHNEIDER ELECTRIC. THIS DRAWING IS BASED UPON LATEST AVAILABLE INFORMATION AND IS SUBJECT TO CHANGE WITHOUT NOTICE.



TITLE: GALAXY VS BATTERY BREAKER BOX 20-80kW, 400V INTERNAL VIEW, BUSBARS & INTERFACE DETAILS
 PROJECT: SUBMITTAL DRAWINGS SHEET 4 OF 4

DWG NO: GVSBBB20K80H REV: 0
 DRAWN: JAYAPRAKASH 22-NOV-18 FIRST ANGLE PROJECTION
 ENGINEER: TERRY 22-NOV-18
 APPROVED: JIACHEN 22-NOV-18