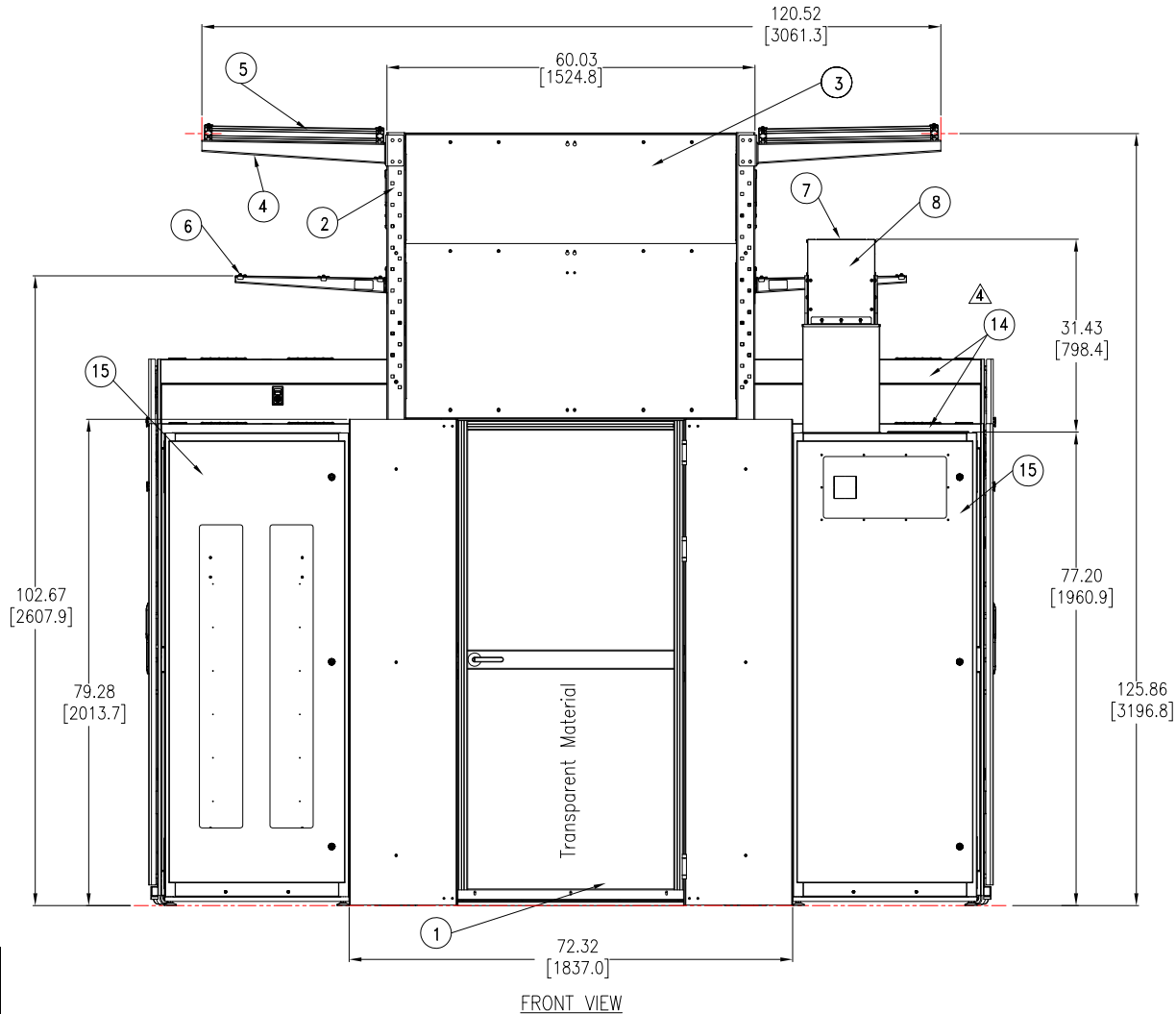


**HYPERPOD SYSTEM**  
**TALL FRAME, SINGLE POD, SIMPLE ROOF, SWING DOOR**  
**WITH RACK AND POWER DISTRIBUTION CABINETS**



<b>Rack Depth</b> <b>inch [mm]</b>
32.480 [825]
42.125 [1070]
47.244 [1200]

**NOTES:**

1. INSTALLATION SHALL COMPLY WITH ALL APPLICABLE NATIONAL, STATE AND LOCAL CODES.
2. REFER TO PRODUCT DOCUMENTATION FOR ADDITIONAL DETAILS PRIOR TO INSTALLATION AND SITE PREPARATION WORK.
3. ALL DIMENSIONS ARE IN INCHES [MILLIMETERS].
- △ 4. TYPICAL ARRANGEMENT FOR 42U AND 48U RACKS SHOWN FOR REFERENCE.  
 RACK WIDTH AND HEIGHT MAY VARY AS PER THE REQUIREMENT.  
 FOR RACK DEPTH REFER TO TABLE.
6. REFER TO THE RESPECTIVE SUBMITTALS FOR THE COMPONENT DETAILS.

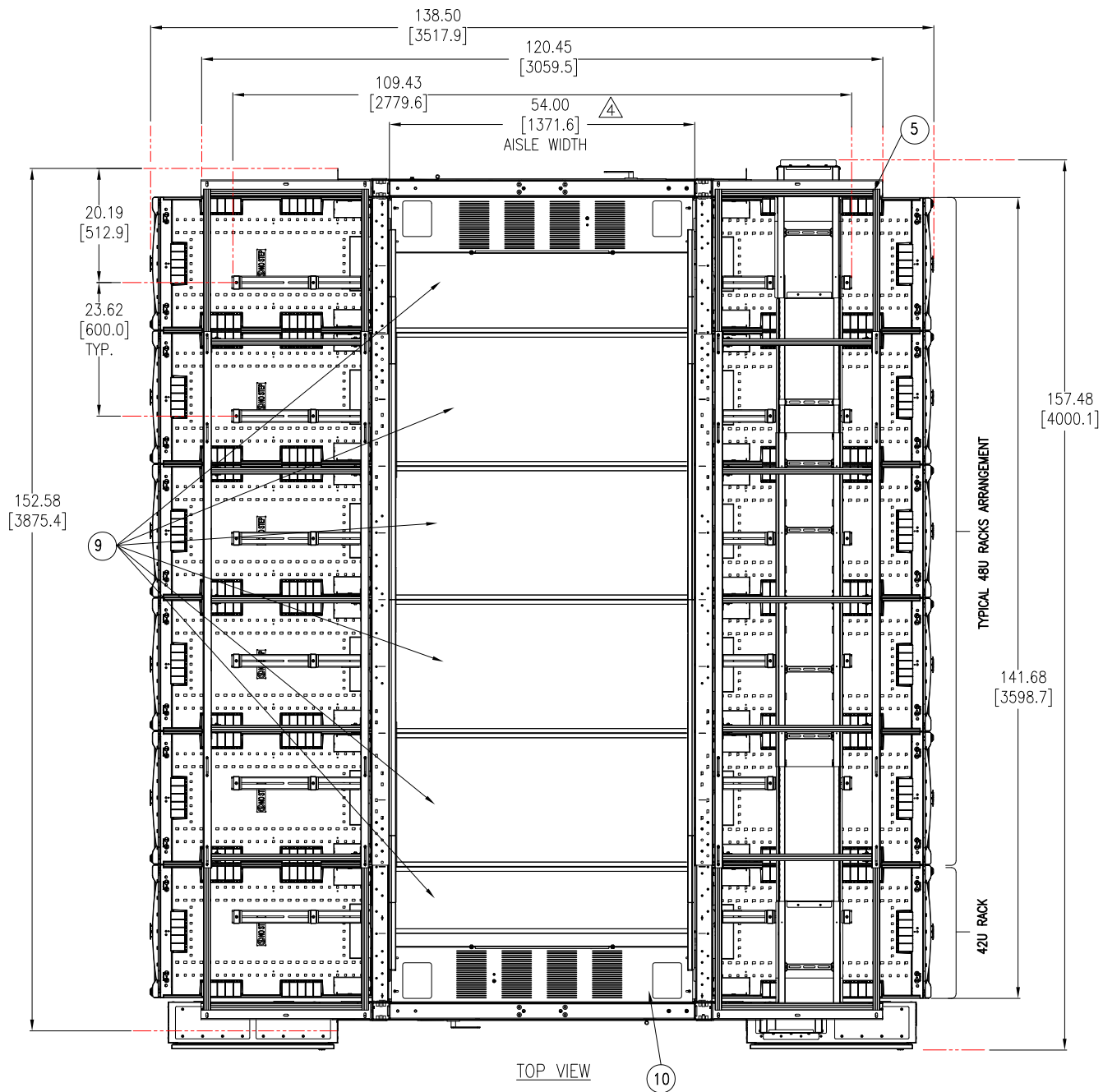
SI.No.	Description
1	Single Swing Door (Shown in closed position)
2	Vertical Post
3	Aisle-End Cap Assembly
4	Large Cantilever (optional)
5	Overhead support frame
6	Mini Cantilever (optional)
7	Cover for power race way
8	Power race way
9	Simple roof
10	Cross over tray
11	Stop rail ( bottom)
12	Window Rail assembly
13	Brush
14	Racks (42U and 48U)
15	Distribution Cabinet
16	Height Adaptor

THIS DRAWING AND SPECIFICATIONS HEREIN ARE THE PROPERTY OF SCHNEIDER ELECTRIC AND SHALL NOT BE COPIED, REPRODUCED OR USED IN WHOLE OR IN PART, AS THE BASIS FOR THE MANUFACTURE OR SALE OF ITEMS WITHOUT WRITTEN PERMISSION FROM SCHNEIDER ELECTRIC. THIS DRAWING IS BASED UPON LATEST AVAILABLE INFORMATION AND IS SUBJECT TO CHANGE WITHOUT NOTICE.



**TITLE:** HyperPod  
 Tall Frame, Single Pod, Simple roof, 4' Aisle  
 Swing Door with Rack and Distribution Cabinets  
 ASSEMBLY-FRONT VIEW

<b>DWG NO:</b> TFSPSRSDWRD4F	<b>REV.</b> 0
<b>DRAWN BY:</b> JAYAPRAKASH	10-SEP-18
<b>ENGINEER:</b> TONG XU	13-SEP-18
<b>APPROVED BY:</b> AARON COTTER	13-SEP-18
<b>PROJECT:</b> SUBMITTAL DRAWING	<b>SHEET:</b> 1 OF 3
<b>THIRD ANGLE PROJECTION</b>	



△ 4

Aisle Width	
Feet	inch [mm]
3	36.0 [914.4]
4	54.0 [1371.6]
5	60.0 [1524.0]
6	78.0 [1981.2]

TOP VIEW

NOTES:

1. INSTALLATION SHALL COMPLY WITH ALL APPLICABLE NATIONAL, STATE AND LOCAL CODES.
2. REFER TO PRODUCT DOCUMENTATION FOR ADDITIONAL DETAILS PRIOR TO INSTALLATION AND SITE PREPARATION WORK.
3. ALL DIMENSIONS ARE IN INCHES [MILLIMETERS].
- △ 4. AISLE DIMENSION MAY VARY AS PER THE REQUIREMENT. REFER TO TABLE FOR CONFIGURATIONS.

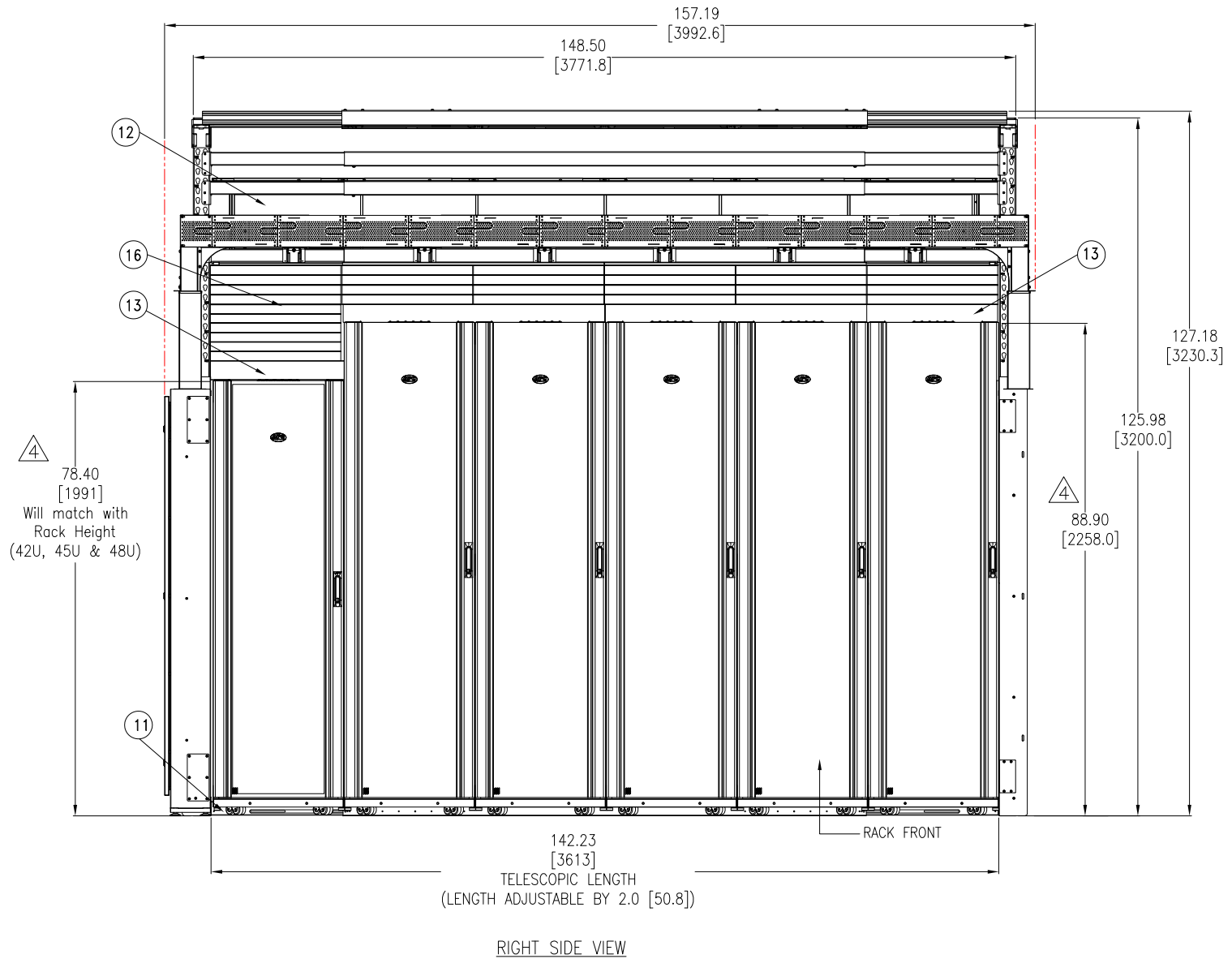
THIS DRAWING AND SPECIFICATIONS HEREIN ARE THE PROPERTY OF SCHNEIDER ELECTRIC AND SHALL NOT BE COPIED, REPRODUCED OR USED IN WHOLE OR IN PART, AS THE BASIS FOR THE MANUFACTURE OR SALE OF ITEMS WITHOUT WRITTEN PERMISSION FROM SCHNEIDER ELECTRIC. THIS DRAWING IS BASED UPON LATEST AVAILABLE INFORMATION AND IS SUBJECT TO CHANGE WITHOUT NOTICE.



TITLE: HyperPod  
Tall Frame, Single Pod, Simple roof, 4' Aisle  
Swing Door with Rack and Distribution Cabinets  
ASSEMBLY-TOP VIEW

PROJECT: SUBMITTAL DRAWING SHEET 2 OF 3

DWG NO:	TFSPSRSDWRD4F	REV.	0
DRAWN BY:	JAYAPRAKASH	10-SEP-18	THIRD
ENGINEER:	TONG XU	13-SEP-18	ANGLE
APPROVED BY:	AARON COTTER	13-SEP-18	PROJECTION



△4

Rack Height	
U	inch [mm]
42U	78.40 [1991]
45U	83.64 [2124]
48U	88.90 [2258]

NOTES:

1. INSTALLATION SHALL COMPLY WITH ALL APPLICABLE NATIONAL, STATE AND LOCAL CODES.
2. REFER TO PRODUCT DOCUMENTATION FOR ADDITIONAL DETAILS PRIOR TO INSTALLATION AND SITE PREPARATION WORK.
3. ALL DIMENSIONS ARE IN INCHES [MILLIMETERS].
- △4. RACK HEIGHT MAY VARY AS PER REQUIREMENT. REFER TO THE TABLE FOR DETAILS.

THIS DRAWING AND SPECIFICATIONS HEREIN ARE THE PROPERTY OF SCHNEIDER ELECTRIC AND SHALL NOT BE COPIED, REPRODUCED OR USED IN WHOLE OR IN PART, AS THE BASIS FOR THE MANUFACTURE OR SALE OF ITEMS WITHOUT WRITTEN PERMISSION FROM SCHNEIDER ELECTRIC. THIS DRAWING IS BASED UPON LATEST AVAILABLE INFORMATION AND IS SUBJECT TO CHANGE WITHOUT NOTICE.



TITLE: HyperPod  
Tall Frame, Single Pod, Simple roof, 4' Aisle  
Swing Door with Rack and Distribution Cabinets  
ASSEMBLY-RIGHT SIDE VIEW

PROJECT: SUBMITTAL DRAWING SHEET 3 OF 3

DWG NO:	TFSPSRSDWRD4F	REV.	0
DRAWN BY:	JAYAPRAKASH	10-SEP-18	THIRD
ENGINEER:	TONG XU	13-SEP-18	ANGLE
APPROVED BY:	AARON COTTER	13-SEP-18	PROJECTION