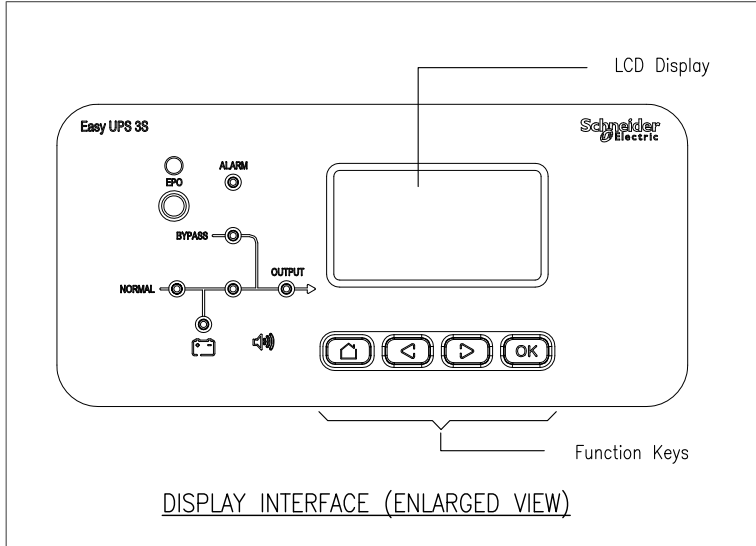


APPLICABLE SKUs & RUNTIME CHART

Sl.No.	SKU#	Runtime at PF=1 and 100% load in Minutes	Number of Battery Strings
1	E3SUPS20K3IB	0	0
2	E3SUPS20K3IB1	8.4	2
3	E3SUPS20K3IB2	15	3

1 String contains 4 Battery Blocks



- NOTES:
- 1.INSTALLATION SHALL COMPLY WITH ALL APPLICABLE NATIONAL AND LOCAL ELECTRICAL REGULATIONS.
 - 2.REFER TO PRODUCT DOCUMENTATION FOR ADDITIONAL DETAILS PRIOR TO INSTALLATION AND SITE PREPARATION WORK.
 - 3.ALL DIMENSIONS ARE IN MILLIMETERS UNLESS OTHERWISE SPECIFIED.
 - 4.NET WEIGHT OF THE UNIT WITHOUT BATTERY IS 150kg. NET WEIGHT OF 1 BATTERY BLOCK IS 27kg.
 - 5.FRONT, REAR AND SIDE SERVICE/VENTILATION CLEARANCE REQUIRED.
 - 6.COLOR: RAL 9003.
 - 7.OPERATING TEMPERATURE: 0°C MIN. TO 40°C MAX.
 - 8.PROTECTION CLASS: IP20

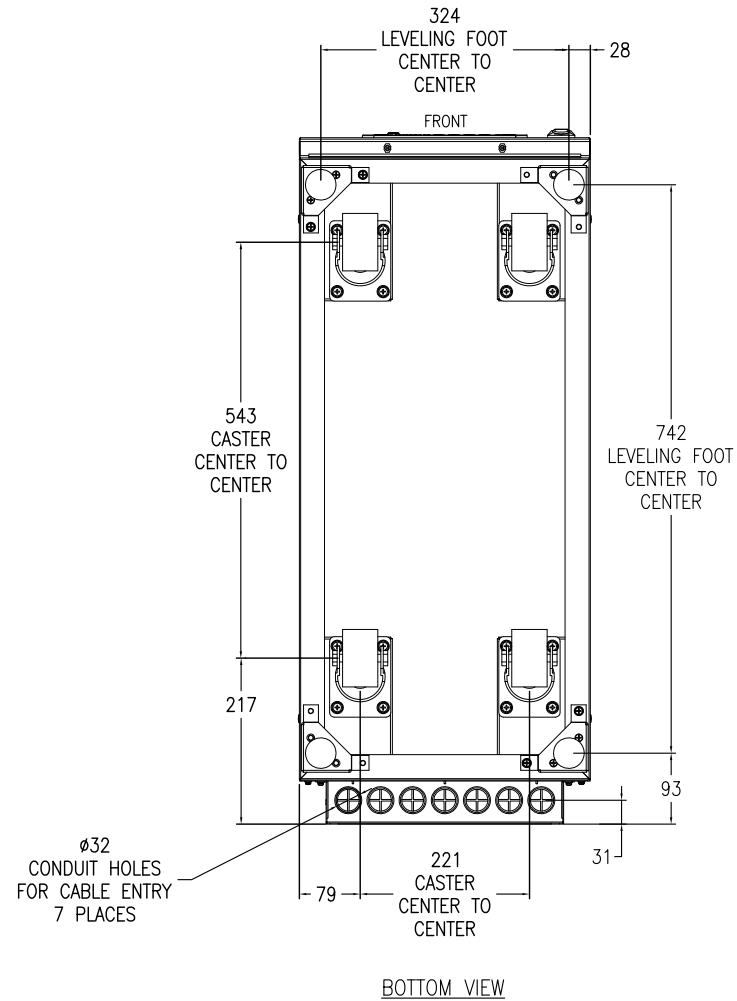
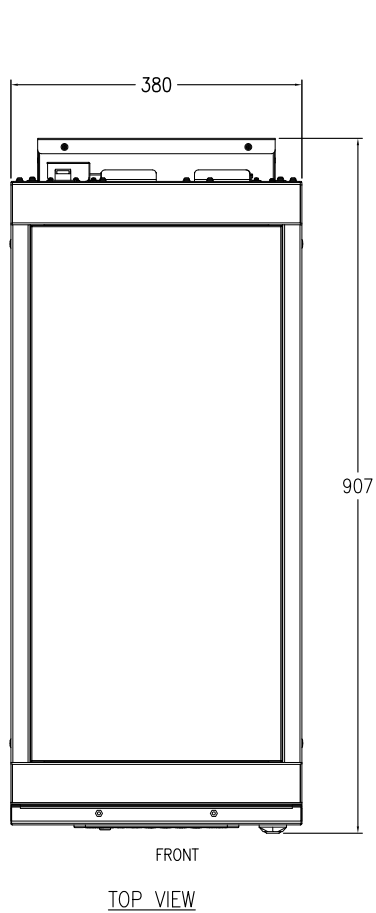
THIS DRAWING AND SPECIFICATIONS HEREIN ARE THE PROPERTY OF SCHNEIDER ELECTRIC AND SHALL NOT BE COPIED, REPRODUCED OR USED IN WHOLE OR IN PART, AS THE BASIS FOR THE MANUFACTURE OR SALE OF ITEMS WITHOUT WRITTEN PERMISSION FROM SCHNEIDER ELECTRIC. THIS DRAWING IS BASED UPON LATEST AVAILABLE INFORMATION AND IS SUBJECT TO CHANGE WITHOUT NOTICE.



TITLE: EASY UPS 3S 20kVA, 400V, 3PH INPUT, 1PH OUTPUT WITH INTERNAL BATTERIES GENERAL ARRANGEMENT
 PROJECT: SUBMITTAL DRAWINGS SHEET 1 OF 6

DWG NO: E3SUPS20K3IB
 DRAWN: JAYAPRAKASH 27-AUG-18
 ENGINEER: COMPBELL BAI 29-AUG-18
 APPROVED: FRANK ZHANG 29-AUG-18

REV. FIRST ANGLE PROJECTION



- NOTES:**
1. INSTALLATION SHALL COMPLY WITH ALL APPLICABLE NATIONAL AND LOCAL ELECTRICAL REGULATIONS.
 2. REFER TO PRODUCT DOCUMENTATION FOR ADDITIONAL DETAILS PRIOR TO INSTALLATION AND SITE PREPARATION WORK.
 3. ALL DIMENSIONS ARE IN MILLIMETERS UNLESS OTHERWISE SPECIFIED.

THIS DRAWING AND SPECIFICATIONS HEREIN ARE THE PROPERTY OF SCHNEIDER ELECTRIC AND SHALL NOT BE COPIED, REPRODUCED OR USED IN WHOLE OR IN PART, AS THE BASIS FOR THE MANUFACTURE OR SALE OF ITEMS WITHOUT WRITTEN PERMISSION FROM SCHNEIDER ELECTRIC. THIS DRAWING IS BASED UPON LATEST AVAILABLE INFORMATION AND IS SUBJECT TO CHANGE WITHOUT NOTICE.



TITLE:
EASY UPS 3S
20kVA, 400V, 3PH INPUT, 1PH OUTPUT
WITH INTERNAL BATTERIES
BOTTOM VIEWS

DWG NO: E3SUPS20K31B

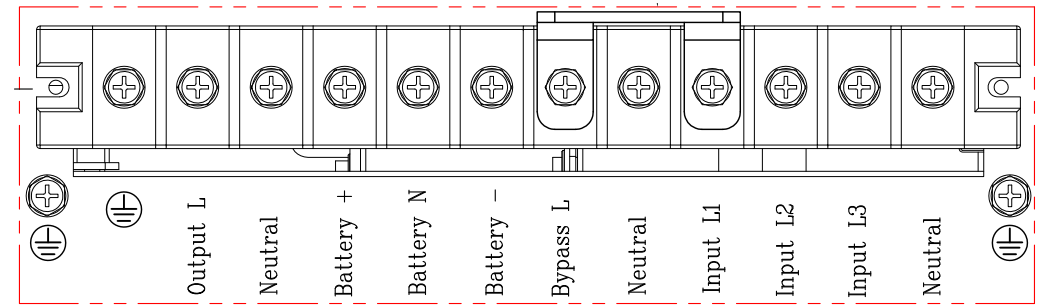
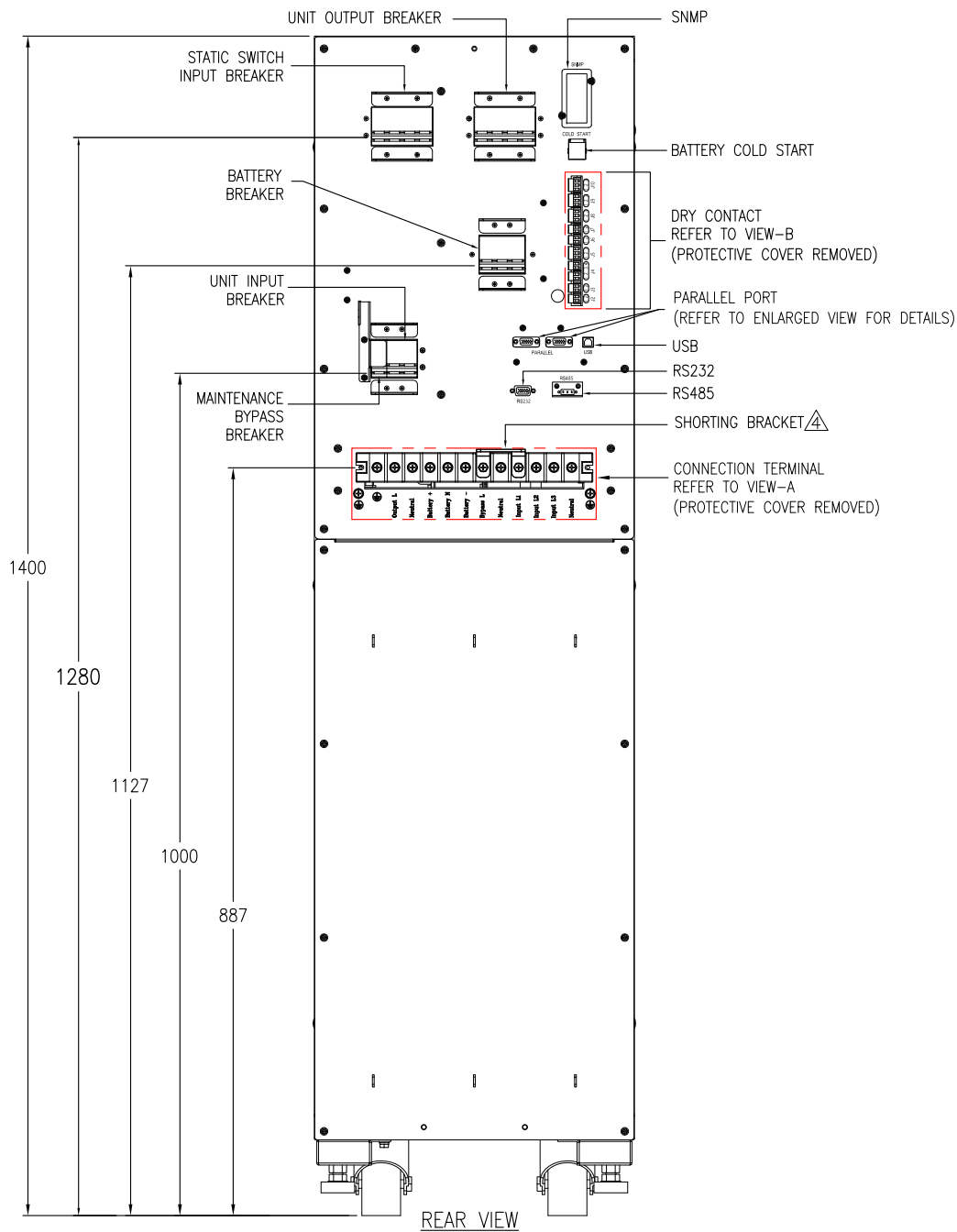
DRAWN: JAYAPRAKASH 27-AUG-18

ENGINEER: COMPELL BAI 29-AUG-18

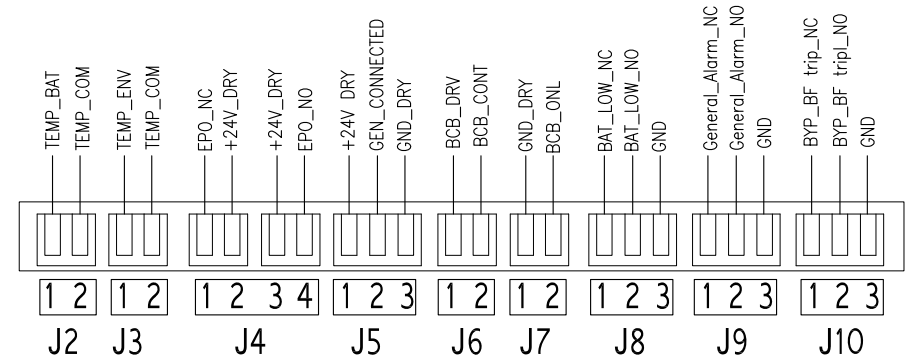
APPROVED: FRANK ZHANG 29-AUG-18

REV.
FIRST ANGLE PROJECTION

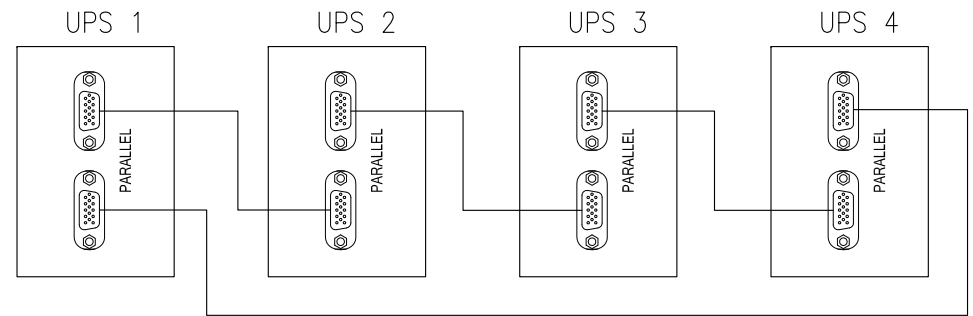
PROJECT: SUBMITTAL DRAWINGS SHEET 2 OF 6



VIEW-A (ENLARGED)
CONNECTION TERMINALS



VIEW-B (ENLARGED)
DRY CONTACT INTERFACE (ENLARGED VIEW)



PARALLEL CONNECTION

NOTES:

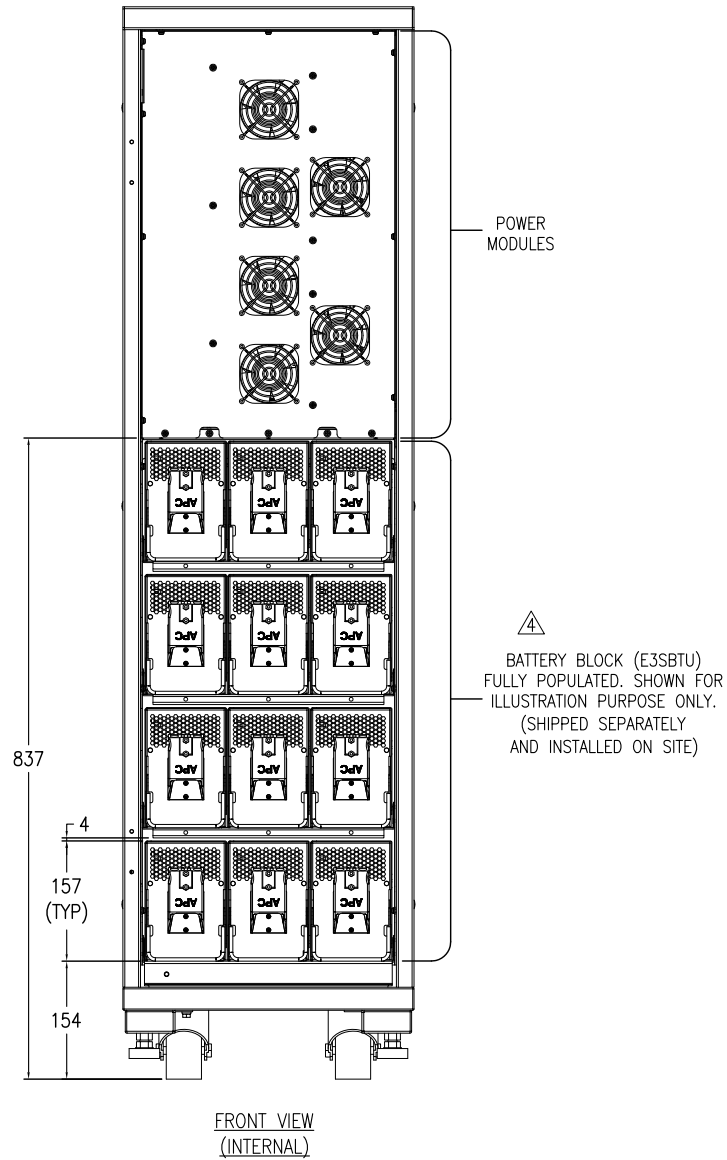
1. INSTALLATION SHALL COMPLY WITH ALL APPLICABLE NATIONAL AND LOCAL ELECTRICAL REGULATIONS.
2. REFER TO PRODUCT DOCUMENTATION FOR ADDITIONAL DETAILS PRIOR TO INSTALLATION AND SITE PREPARATION WORK.
3. ALL DIMENSIONS ARE IN MILLIMETERS UNLESS OTHERWISE SPECIFIED.
- △ 4. FOR DUAL MAINS CONFIGURATION REMOVE THE SHORTING BRACKET.
5. UP TO 4 NUMBERS OF UPS CAN BE CONNECTED IN PARALLEL. MAXIMUM COMMUNICATION CABLE LENGTH IS 5 Meters.

THIS DRAWING AND SPECIFICATIONS HEREIN ARE THE PROPERTY OF SCHNEIDER ELECTRIC AND SHALL NOT BE COPIED, REPRODUCED OR USED IN WHOLE OR IN PART, AS THE BASIS FOR THE MANUFACTURE OR SALE OF ITEMS WITHOUT WRITTEN PERMISSION FROM SCHNEIDER ELECTRIC. THIS DRAWING IS BASED UPON LATEST AVAILABLE INFORMATION AND IS SUBJECT TO CHANGE WITHOUT NOTICE.



TITLE:
EASY UPS 3S
20kVA, 400V, 3PH INPUT, 1PH OUTPUT
WITH INTERNAL BATTERIES
REAR VIEW AND DETAILS
PROJECT: SUBMITTAL DRAWINGS SHEET 3 OF 6

DWG NO: E3SUPS20K31B REV.
DRAWN: JAYAPRAKASH 27-AUG-18
ENGINEER: COMPELL BAI 29-AUG-18
APPROVED: FRANK ZHANG 29-AUG-18
FIRST ANGLE PROJECTION



NOTES:

1. INSTALLATION SHALL COMPLY WITH ALL APPLICABLE NATIONAL AND LOCAL ELECTRICAL REGULATIONS.
 2. REFER TO PRODUCT DOCUMENTATION FOR ADDITIONAL DETAILS PRIOR TO INSTALLATION AND SITE PREPARATION WORK.
 3. ALL DIMENSIONS ARE IN MILLIMETERS UNLESS OTHERWISE SPECIFIED.
- △4. BATTERY BLOCK (E3SBTU) IS NOT PART OF THIS SKU.
INSTALL BATTERIES OF ONE STRING AT A TIME AND FROM BOTTOM TO TOP.
BATTERY STRINGS ARE VERTICAL. PLACE THE BATTERY STRING IN THE MIDDLE IF THERE IS ONLY ONE AND PLACE THEM IN LEFT AND RIGHT SIDES IF THERE ARE TWO.

THIS DRAWING AND SPECIFICATIONS HEREIN ARE THE PROPERTY OF SCHNEIDER ELECTRIC AND SHALL NOT BE COPIED, REPRODUCED OR USED IN WHOLE OR IN PART, AS THE BASIS FOR THE MANUFACTURE OR SALE OF ITEMS WITHOUT WRITTEN PERMISSION FROM SCHNEIDER ELECTRIC. THIS DRAWING IS BASED UPON LATEST AVAILABLE INFORMATION AND IS SUBJECT TO CHANGE WITHOUT NOTICE.



TITLE:
EASY UPS 3S
20kVA, 400V, 3PH INPUT, 1PH OUTPUT
WITH INTERNAL BATTERIES
INTERNAL VIEW

DWG NO: E3SUPS20K31B REV.

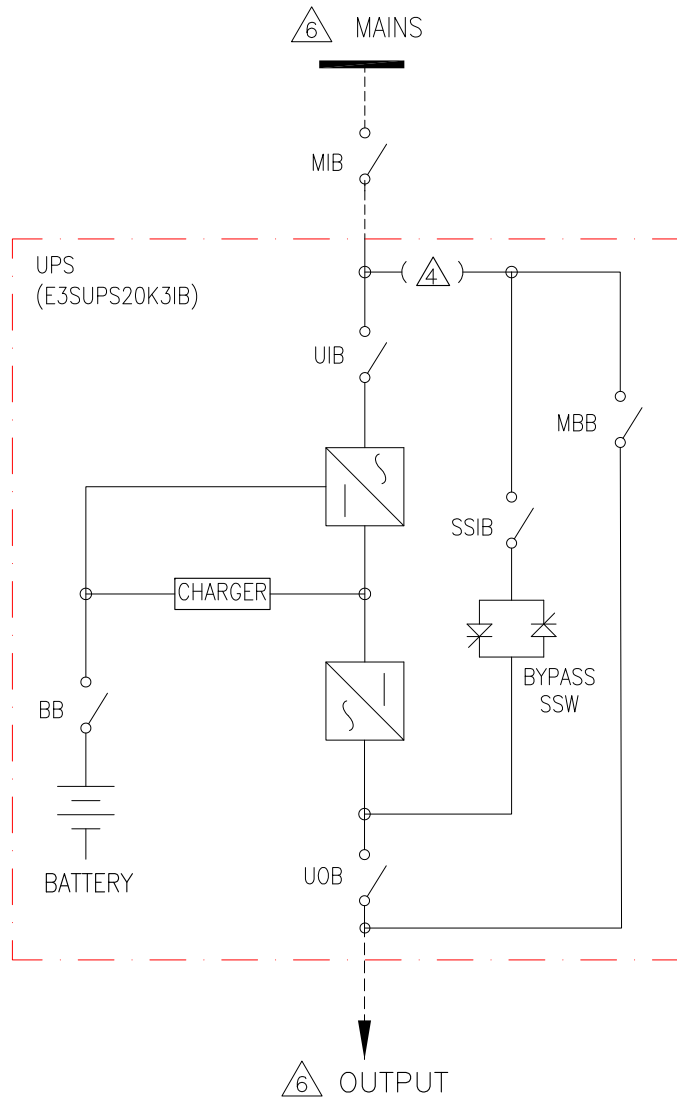
DRAWN: JAYAPRAKASH 27-AUG-18 FIRST ANGLE PROJECTION

ENGINEER: COMPBELL BAI 29-AUG-18

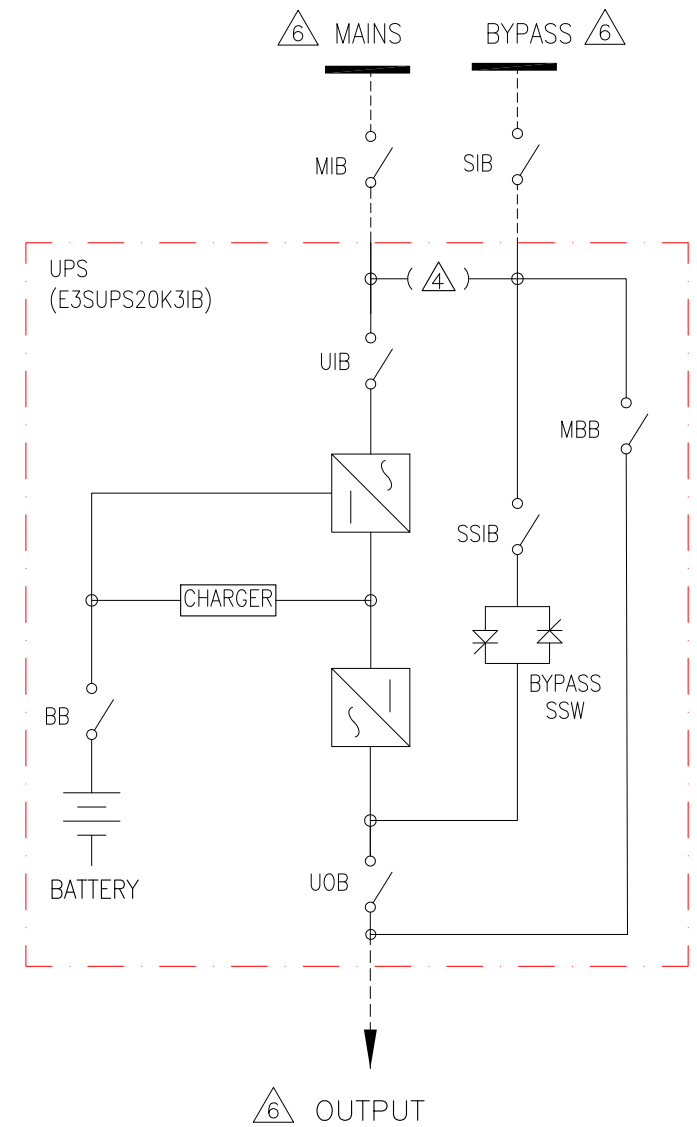
APPROVED: FRANK ZHANG 29-AUG-18

PROJECT: SUBMITTAL DRAWINGS SHEET 4 OF 6

SINGLE MAINS CONFIGURATION



DUAL MAINS CONFIGURATION



LEGEND:

----- CABLE PROVIDED BY OTHERS

- NOTES:**
1. INSTALLATION SHALL COMPLY WITH ALL APPLICABLE NATIONAL AND LOCAL ELECTRICAL REGULATIONS.
 2. REFER TO PRODUCT DOCUMENTATION FOR ADDITIONAL DETAILS PRIOR TO INSTALLATION AND SITE PREPARATION WORK
 3. DRAWING DEPICTS POWER SYSTEM CONNECTIONS AND NOT IS NOT REPRESENTATIVE OF PHYSICAL LAYOUT.
 4. SINGLE MAINS CONFIGURATION IS DEFAULT.
FOR DUAL MAINS CONFIGURATION REMOVE THE 3 SHORTING STRAPS/WIRES.
 5. UP TO 4 UPS CAN BE CONNECTED IN PARALLEL.
 6. REFER TO SHEET-7 FOR ELECTRICAL DATA.
 7. CABLE LUGS ARE PROVIDED BY OTHERS.

THIS DRAWING AND SPECIFICATIONS HEREIN ARE THE PROPERTY OF SCHNEIDER ELECTRIC AND SHALL NOT BE COPIED, REPRODUCED OR USED IN WHOLE OR IN PART, AS THE BASIS FOR THE MANUFACTURE OR SALE OF ITEMS WITHOUT WRITTEN PERMISSION FROM SCHNEIDER ELECTRIC. THIS DRAWING IS BASED UPON LATEST AVAILABLE INFORMATION AND IS SUBJECT TO CHANGE WITHOUT NOTICE.

Schneider Electric

TITLE:
EASY UPS 3S
20kVA, 400V, 3PH INPUT, 1PH OUTPUT
WITH INTERNAL BATTERIES
SYSTEM ONE LINE DIAGRAM

PROJECT: SUBMITTAL DRAWINGS SHEET 5 OF 6

DWG NO: E3SUPS20K3IB

DRAWN: JAYAPRAKASH 27-AUG-18
ENGINEER: CAMPBELL BAI 29-AUG-18

APPROVED: FRANK ZHANG 29-AUG-18

REV.
FIRST ANGLE PROJECTION

ELECTRICAL DATA SHEET

UPS RATING	20kVA
INPUT SPECIFICATIONS	
INPUT VOLTAGE (V)	380/400/415
NOMINAL INPUT CURRENT (A)	32/31/30
MAXIMUM INPUT CURRENT (A)	38/37/36
INPUT CURRENT LIMITATION (A)	44/42/41
INPUT FREQUENCY (Hz)	45-65
INPUT WIRING	L1, L2, L3, N, PE
INPUT THDI	<4% FOR 10kVA, < 5% FOR 15-30kVA
BYPASS SPECIFICATIONS	
BYPASS VOLTAGE (V)	220/230/240
MINIMUM BYPASS VOLTAGE (V)	176/184/192
MAXMUM BYPASS VOLTAGE (V)	253/264/276
NOMINAL BYPASS CURRENT (A)	91/87/84
BYPASS FREQUENCY (Hz)	50/60
BYPASS WIRING	L, N, PE
OUTPUT SPECIFICATIONS	
OUTPUT VOLTAGE (V)	220/230/240
NOMINAL OUTPUT CURRENT (A)	91/87/84
OUTPUT FREQUENCY (Hz)	50/60
OUTPUT WIRING	L, N, PE
OUTPUT THDU	<3%@ 100% LINEAR LOAD, < 5.5%@ 100% NON-LINEAR LOAD
BATTERY SPECIFICATIONS	
CHARGING POWER	PROGRAMMABLE FROM 1% TO 20% OF UPS CAPACITY. DEFAULT IS 10%
MAXIMUM CHARGING POWER (W)	4000
NOMINAL BATTERY VOLTAGE (VDC)	+/-240
NOMINAL FLOAT VOLTAGE (VDC)	+/-270
END OF DISCHARGE VOLTAGE (FULL LOAD) (VDC)	+/-198
END OF DISCHARGE VOLTAGE (NO LOAD) (VDC)	+/-210
BATTERY CURRENT AT FULL LOAD AND NOMINAL BATTERY VOLTAGE (A)	44
BATTERY CURRENT AT FULL LOAD AND MINIMUM BATTERY VOLTAGE (A)	54
RIPPLE CURRENT	<5% C10
MAXIMUM SHORT CIRCUIT WITHSTAND	Icc=10kA
RECOMMENDED CABLE SIZES	
INPUT CABLE SIZE SINGLE MAINS (mm ²)	35
INPUT CABLE SIZE DUAL MAINS (mm ²)	10
BYPASS CABLE SIZE (mm ²)	35
OUTPUT CABLE SIZE (mm ²)	35
PE CABLE SIZE (mm ²)	10

NOTES:

1. INSTALLATION SHALL COMPLY WITH ALL APPLICABLE NATIONAL AND LOCAL ELECTRICAL REGULATIONS.
2. REFER TO PRODUCT DOCUMENTATION FOR ADDITIONAL DETAILS PRIOR TO INSTALLATION AND SITE PREPARATION WORK.

THIS DRAWING AND SPECIFICATIONS HEREIN ARE THE PROPERTY OF SCHNEIDER ELECTRIC AND SHALL NOT BE COPIED, REPRODUCED OR USED IN WHOLE OR IN PART, AS THE BASIS FOR THE MANUFACTURE OR SALE OF ITEMS WITHOUT WRITTEN PERMISSION FROM SCHNEIDER ELECTRIC. THIS DRAWING IS BASED UPON LATEST AVAILABLE INFORMATION AND IS SUBJECT TO CHANGE WITHOUT NOTICE.



TITLE:
EASY UPS 3S
20kVA, 400V, 3PH INPUT, 1PH OUTPUT
WITH INTERNAL BATTERIES
ELECTRICAL DATA SHEET

PROJECT: SUBMITTAL DRAWINGS SHEET 6 OF 6

DWG NO:	E3SUPS20K31B		REV.
DRAWN:	JAYAPRAKASH	27-AUG-18	FIRST
ENGINEER:	COMPBELL BAI	29-AUG-18	ANGLE
APPROVED:	FRANK ZHANG	29-AUG-18	PROJECTION