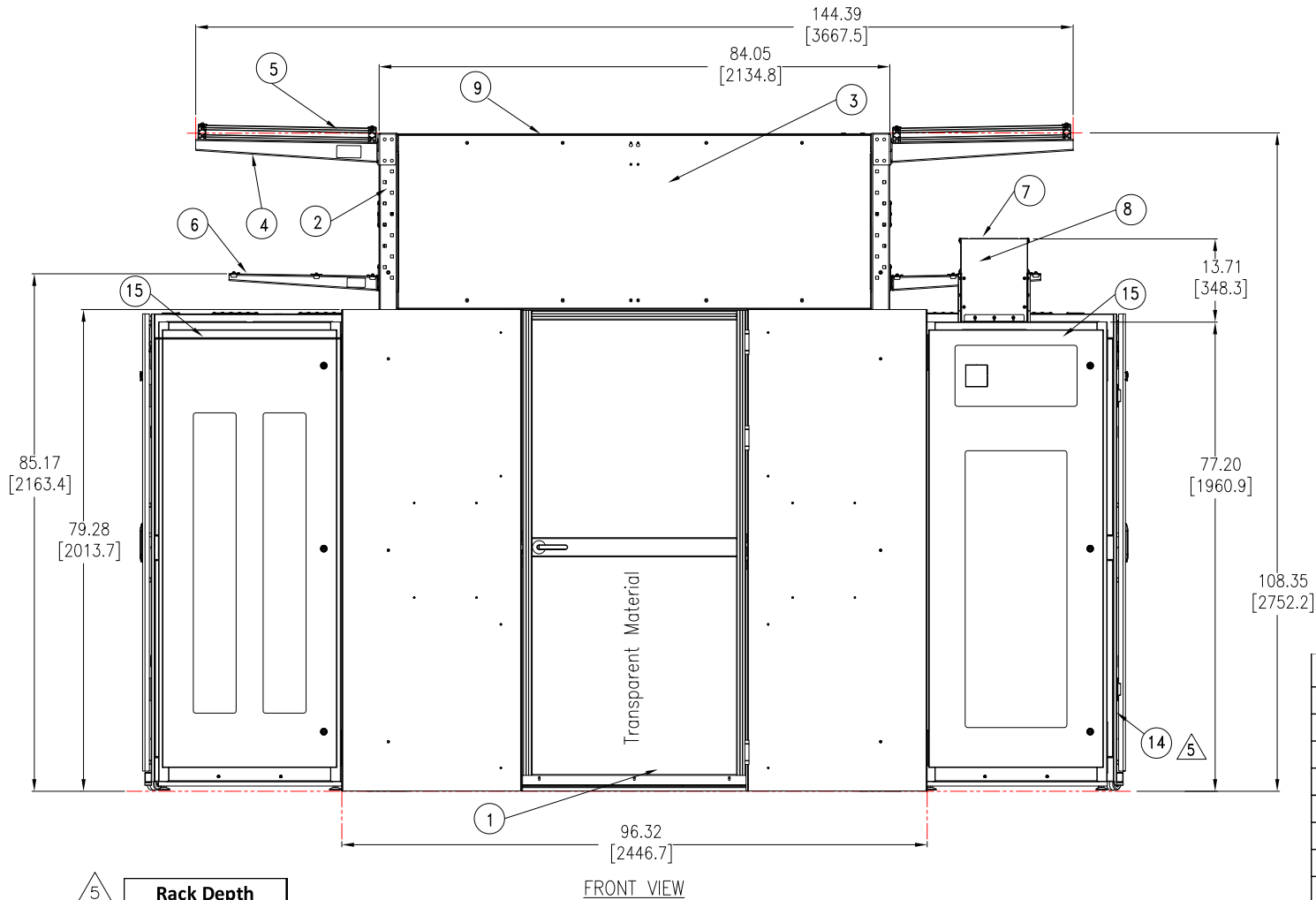


HYPERPOD SYSTEM
SHORT FRAME, SINGLE POD, SIMPLE ROOF, Swing Door
WITH RACK AND DISTRIBUTION CABINETS



FRONT VIEW

△5	Rack Depth mm [inch]
	825 [32.480]
	1070 [42.125]
	1200 [47.244]

SI.No.	Description
1	Single Swing Door (Shown in closed position)
2	Vertical Post
3	Aisle-End Cap Assembly
4	Large Cantilever (optional)
5	Overhead support frame
6	Mini Cantilever (optional)
7	Cover for power race way
8	Power race way
9	Simple roof
10	Cross over tray
11	Stop rail (bottom)
12	Window Rail assembly
13	Row Length Brush
14	Rack (AR3100)
15	Distribution Cabinet

NOTES:

- INSTALLATION SHALL COMPLY WITH ALL APPLICABLE NATIONAL, STATE AND LOCAL CODES.
- REFER TO PRODUCT DOCUMENTATION FOR ADDITIONAL DETAILS PRIOR TO INSTALLATION AND SITE PREPARATION WORK.
- ALL DIMENSIONS ARE IN INCHES [MILLIMETERS].
- TYPICAL ARRANGEMENT FOR AR3100 RACK SHOWN FOR REFERENCE.
- RACK DEPTH AND HEIGHT VARY AS PER THE REQUIREMENT. REFER TO THE TABLE FOR RACK DEPTH.
- REFER TO THE RESPECTIVE SUBMITTALS FOR THE COMPONENT DETAILS.

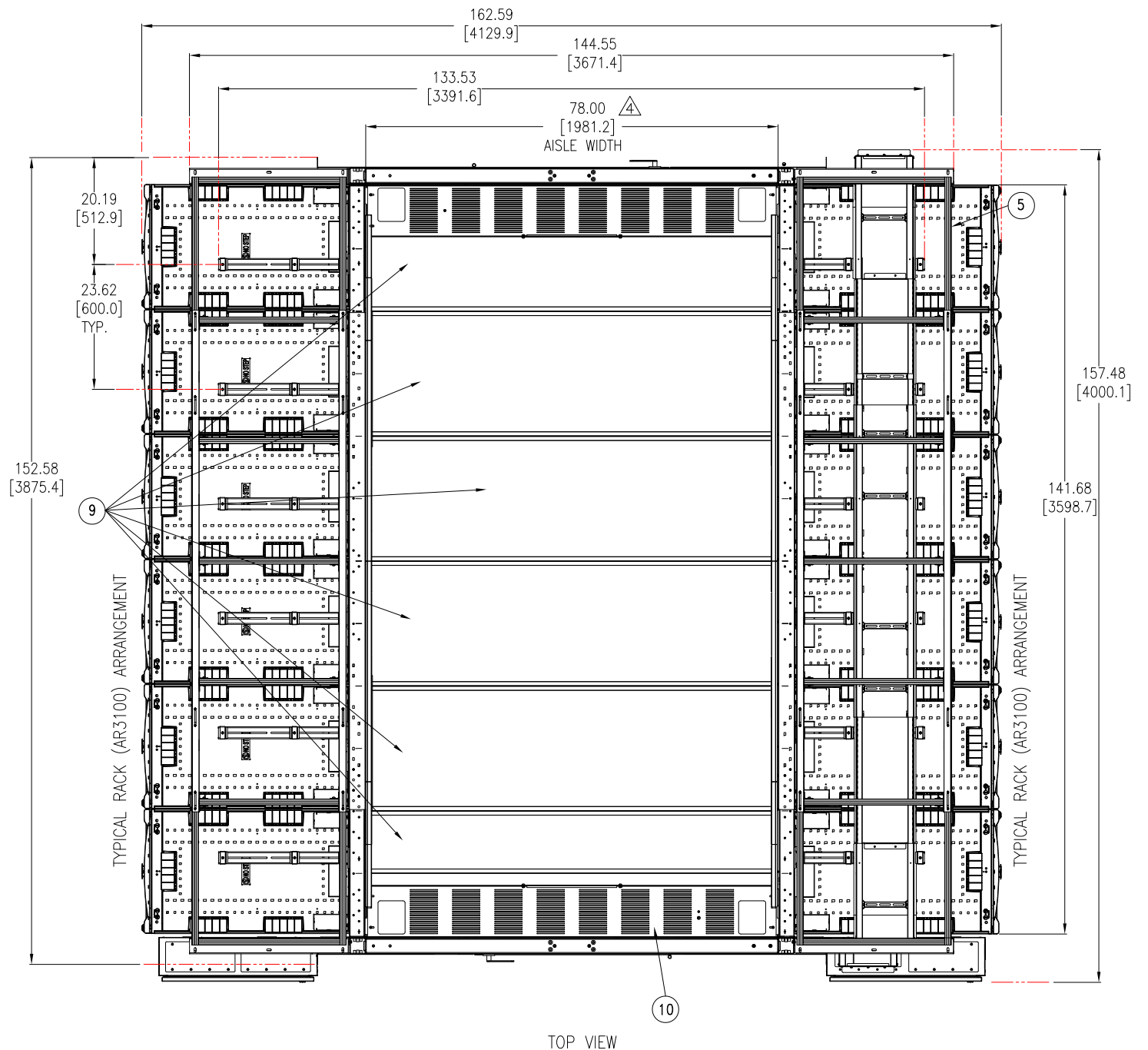
THIS DRAWING AND SPECIFICATIONS HEREIN ARE THE PROPERTY OF SCHNEIDER ELECTRIC AND SHALL NOT BE COPIED, REPRODUCED OR USED IN WHOLE OR IN PART, AS THE BASIS FOR THE MANUFACTURE OR SALE OF ITEMS WITHOUT WRITTEN PERMISSION FROM SCHNEIDER ELECTRIC. THIS DRAWING IS BASED UPON LATEST AVAILABLE INFORMATION AND IS SUBJECT TO CHANGE WITHOUT NOTICE.



TITLE: HyperPod
 Short Frame, Single Pod, Simple roof, 6'Aisle
 Swing Door with Rack and Distribution Cabinets
 ASSEMBLY-FRONT VIEW

PROJECT: SUBMITTAL DRAWING SHEET 1 OF 3

DWG NO:	SFSPSRSDWRD6F	REV.	0
DRAWN BY:	JAYAPRAKASH	25-JUL-18	THIRD
ENGINEER:	TONG XU	31-JUL-18	ANGLE
APPROVED BY:	AARON COTTER	31-JUL-18	PROJECTION



TOP VIEW

Aisle Width	
Feet	mm [inch]
3	914.4 [36.0]
4	1371.6 [54.0]
5	1524.0 [60.0]
6	1981.2 [78.0]

4

NOTES:

1. INSTALLATION SHALL COMPLY WITH ALL APPLICABLE NATIONAL, STATE AND LOCAL CODES.
2. REFER TO PRODUCT DOCUMENTATION FOR ADDITIONAL DETAILS PRIOR TO INSTALLATION AND SITE PREPARATION WORK.
3. ALL DIMENSIONS ARE IN INCHES [MILLIMETERS].
- △4. AISLE DIMENSION MAY VARY AS PER THE REQUIREMENT. REFER TO THE TABLE FOR CONFIGURATION.

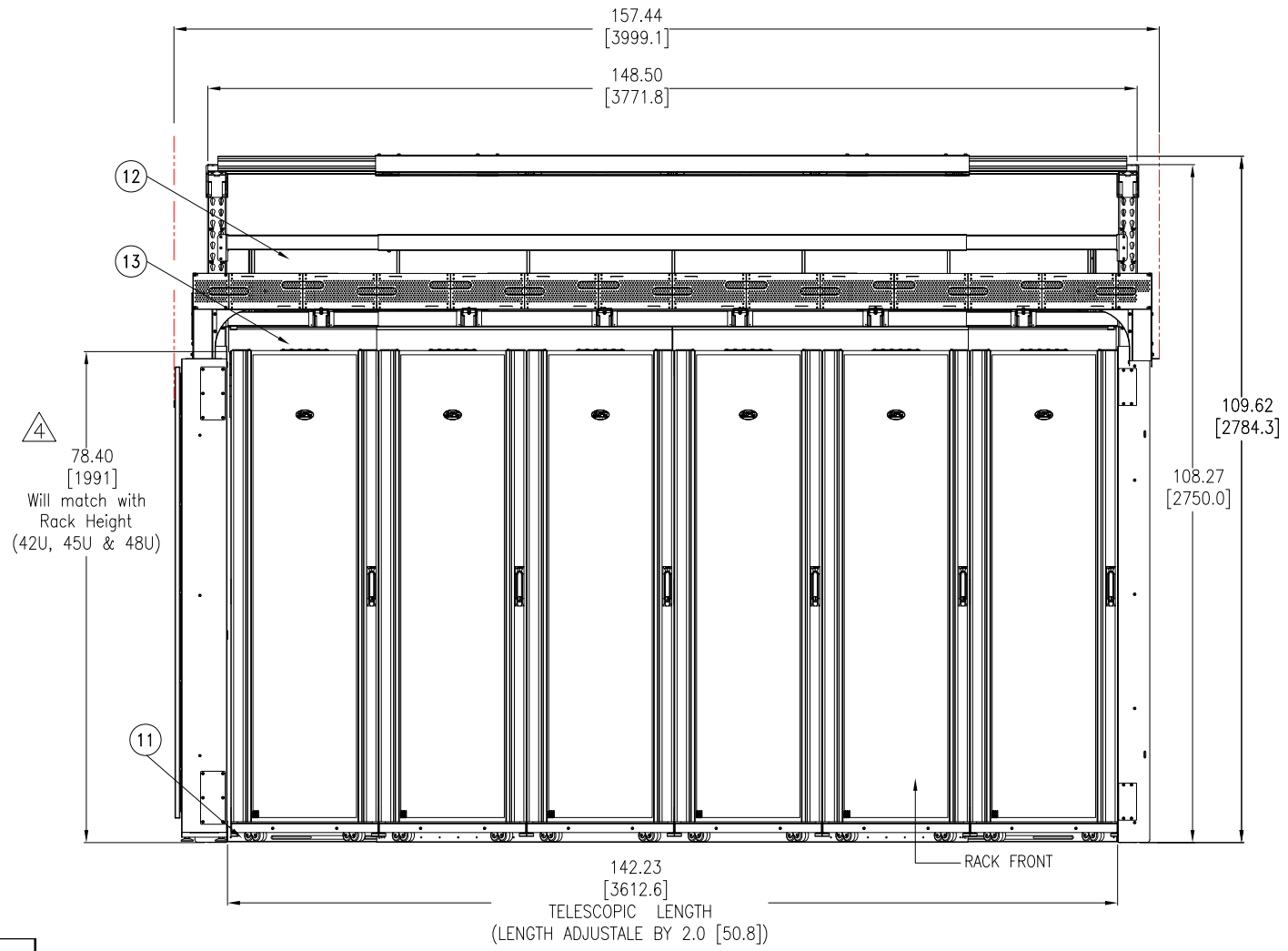
THIS DRAWING AND SPECIFICATIONS HEREIN ARE THE PROPERTY OF SCHNEIDER ELECTRIC AND SHALL NOT BE COPIED, REPRODUCED OR USED IN WHOLE OR IN PART, AS THE BASIS FOR THE MANUFACTURE OR SALE OF ITEMS WITHOUT WRITTEN PERMISSION FROM SCHNEIDER ELECTRIC. THIS DRAWING IS BASED UPON LATEST AVAILABLE INFORMATION AND IS SUBJECT TO CHANGE WITHOUT NOTICE.



TITLE: HyperPod
Short Frame, Single Pod, Simple roof, 6'Aisle
Swing Door with Rack and Distribution Cabinets
ASSEMBLY-TOP VIEW

PROJECT: SUBMITTAL DRAWING SHEET 2 OF 3

DWG NO:	SFSPSRSDWRD6F	REV.	0
DRAWN BY:	JAYAPRAKASH	25-JUL-18	THIRD
ENGINEER:	TONG XU	31-JUL-18	ANGLE
APPROVED BY:	AARON COTTER	31-JUL-18	PROJECTION



RIGHT SIDE VIEW

Rack Height	
U	mm [inch]
42U	1991 [78.39]
45U	2124 [83.64]
48U	2258 [88.90]

△4

NOTES:

1. INSTALLATION SHALL COMPLY WITH ALL APPLICABLE NATIONAL, STATE AND LOCAL CODES.
2. REFER TO PRODUCT DOCUMENTATION FOR ADDITIONAL DETAILS PRIOR TO INSTALLATION AND SITE PREPARATION WORK.
3. ALL DIMENSIONS ARE IN INCHES [MILLIMETERS].
- △4. RACK HEIGHT MAY VARY AS PER THE REQUIREMENT. REFER TO THE TABLE FOR THE DETAILS

THIS DRAWING AND SPECIFICATIONS HEREIN ARE THE PROPERTY OF SCHNEIDER ELECTRIC AND SHALL NOT BE COPIED, REPRODUCED OR USED IN WHOLE OR IN PART, AS THE BASIS FOR THE MANUFACTURE OR SALE OF ITEMS WITHOUT WRITTEN PERMISSION FROM SCHNEIDER ELECTRIC. THIS DRAWING IS BASED UPON LATEST AVAILABLE INFORMATION AND IS SUBJECT TO CHANGE WITHOUT NOTICE.



TITLE: HyperPod
Short Frame, Single Pod, Simple roof, 6'Aisle
Swing Door with Rack and Distribution Cabinets
ASSEMBLY-RIGHT SIDE VIEW

PROJECT: SUBMITTAL DRAWING SHEET 3 OF 3

DWG NO:	SFSPSRSDWRD6F	REV.	0
DRAWN BY:	JAYAPRAKASH	25-JUL-18	THIRD
ENGINEER:	TONG XU	31-JUL-18	ANGLE
APPROVED BY:	AARON COTTER	31-JUL-18	PROJECTION