

DISPLAY INTERFACE (ENLARGED VIEW)

- NOTES:**
1. INSTALLATION SHALL COMPLY WITH ALL APPLICABLE NATIONAL AND LOCAL ELECTRICAL REGULATIONS.
 2. REFER TO PRODUCT DOCUMENTATION FOR ADDITIONAL DETAILS PRIOR TO INSTALLATION AND SITE PREPARATION WORK.
 3. ALL DIMENSIONS ARE IN MILLIMETERS UNLESS OTHERWISE SPECIFIED.
 4. WEIGHT OF THE UNIT IS 70kg
 5. FRONT/REAR/SIDE SERVICE CLEARANCE, TOP VENTILATION CLEARANCE REQUIRED.
 6. COLOR: RAL 9003.
 7. PROTECTION CLASS: IP20.
 8. OPERATING TEMPERATURE: 0°C MIN. TO 40°C MAX.

THIS DRAWING AND SPECIFICATIONS HEREIN ARE THE PROPERTY OF SCHNEIDER ELECTRIC AND SHALL NOT BE COPIED, REPRODUCED OR USED IN WHOLE OR IN PART, AS THE BASIS FOR THE MANUFACTURE OR SALE OF ITEMS WITHOUT WRITTEN PERMISSION FROM SCHNEIDER ELECTRIC. THIS DRAWING IS BASED UPON LATEST AVAILABLE INFORMATION AND IS SUBJECT TO CHANGE WITHOUT NOTICE.

Schneider Electric

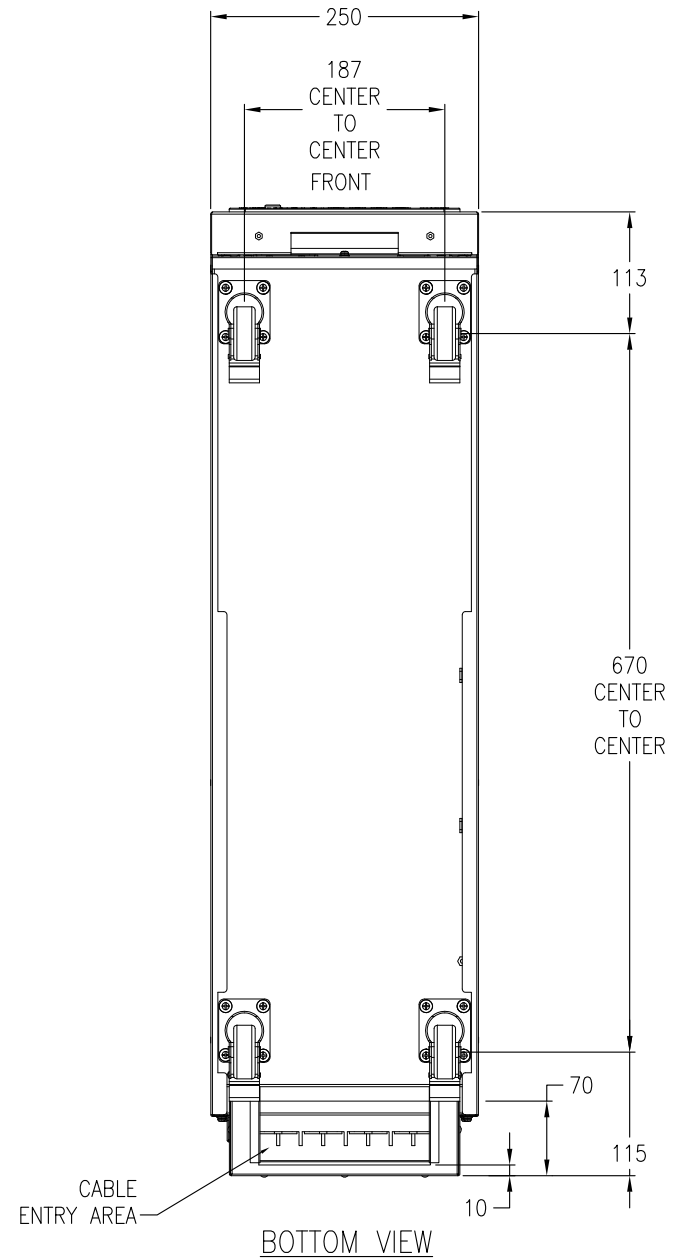
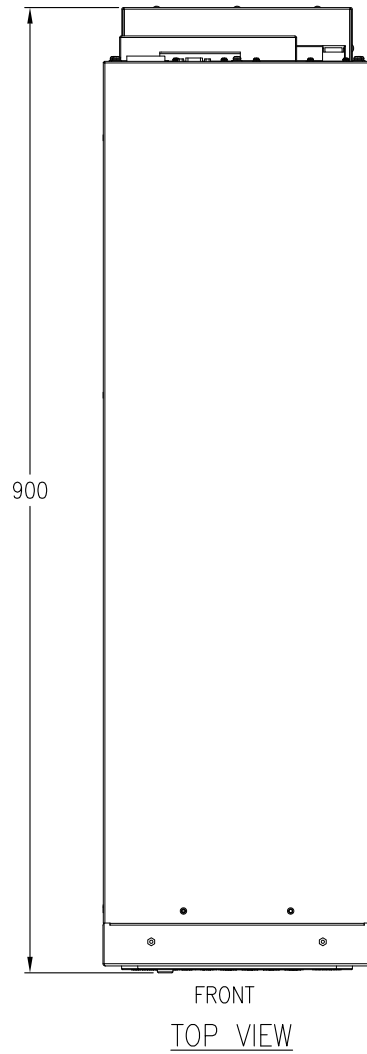
TITLE: Schneider Electric Easy UPS 3S
CLA, LOW TOWER
40KVA, 400V, 3PH
WITHOUT BATTERY MODULES
GENERAL ARRANGEMENT

PROJECT: SUBMITTAL DRAWINGS SHEET 1 OF 6

DWG NO: E3SUPS40KH

DRAWN: K NAGENDRA	22-NOV-17	FIRST ANGLE PROJECTION
ENGINEER: CAMPBELL BAI	24-NOV-17	
APPROVED: FRANK ZHANG	24-NOV-17	

REV.



NOTES:

1. INSTALLATION SHALL COMPLY WITH ALL APPLICABLE NATIONAL AND LOCAL ELECTRICAL REGULATIONS.
2. REFER TO PRODUCT DOCUMENTATION FOR ADDITIONAL DETAILS PRIOR TO INSTALLATION AND SITE PREPARATION WORK.
3. ALL DIMENSIONS ARE IN MILLIMETERS UNLESS OTHERWISE SPECIFIED.

THIS DRAWING AND SPECIFICATIONS HEREIN ARE THE PROPERTY OF SCHNEIDER ELECTRIC AND SHALL NOT BE COPIED, REPRODUCED OR USED IN WHOLE OR IN PART, AS THE BASIS FOR THE MANUFACTURE OR SALE OF ITEMS WITHOUT WRITTEN PERMISSION FROM SCHNEIDER ELECTRIC. THIS DRAWING IS BASED UPON LATEST AVAILABLE INFORMATION AND IS SUBJECT TO CHANGE WITHOUT NOTICE.

**Schneider
Electric**

TITLE: Schneider Electric Easy UPS 3S
CLA, LOW TOWER
40kVA, 400V, 3PH
WITHOUT BATTERY MODULES
TOP & BOTTOM VIEW

PROJECT: SUBMITTAL DRAWINGS SHEET 2 OF 6

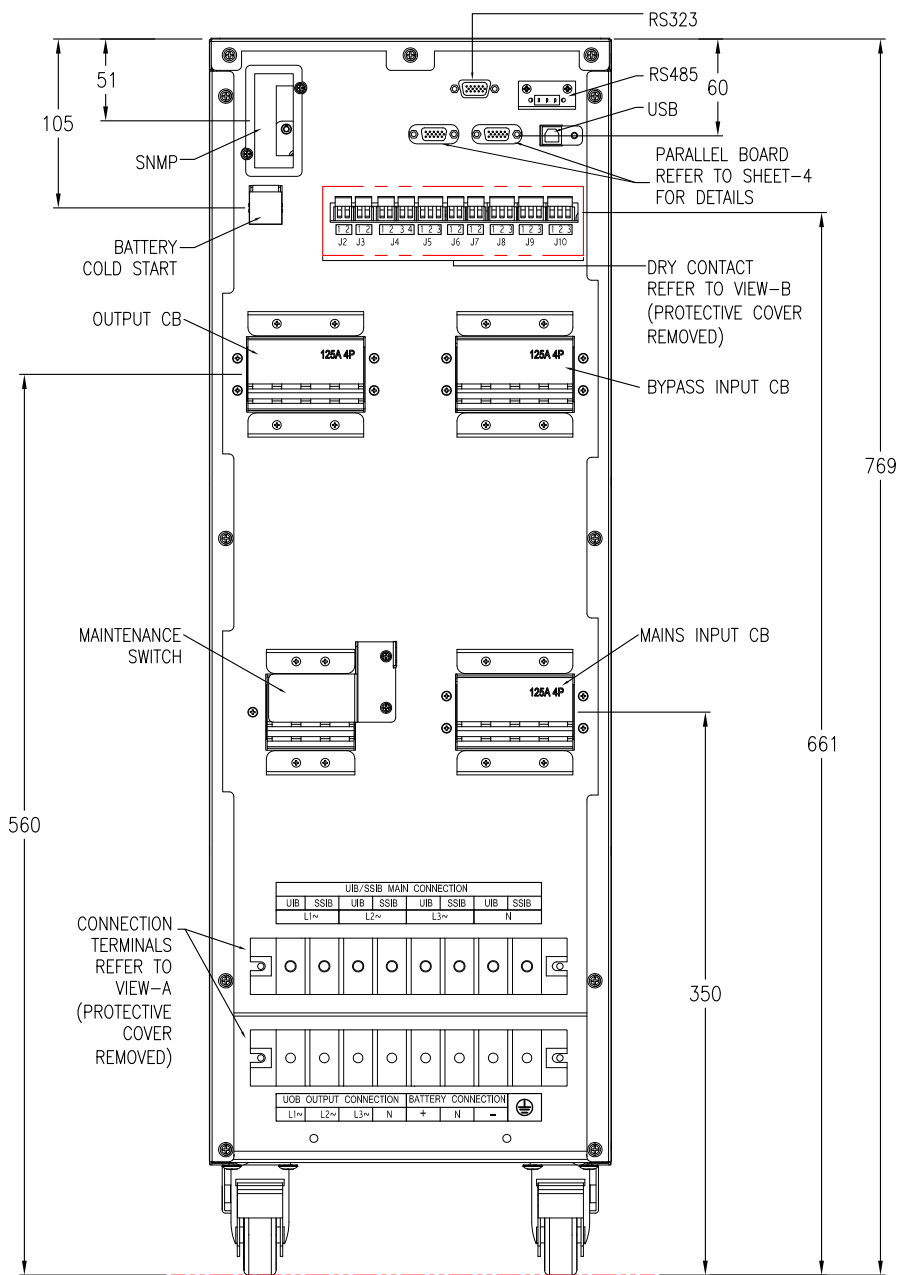
DWG NO: E3SUPS40KH

DRAWN: K NAGENDRA 22-NOV-17

ENGINEER: COMPELL BAI 24-NOV-17

APPROVED: FRANK ZHANG 24-NOV-17

REV.
FIRST
ANGLE
PROJECTION



- NOTES:
- 1.INSTALLATION SHALL COMPLY WITH ALL APPLICABLE NATIONAL AND LOCAL ELECTRICAL REGULATIONS.
 - 2.REFER TO PRODUCT DOCUMENTATION FOR ADDITIONAL DETAILS PRIOR TO INSTALLATION AND SITE PREPARATION WORK.
 - 3.ALL DIMENSIONS ARE IN MILLIMETERS UNLESS OTHERWISE SPECIFIED.
 - △ 4.J10 IS RESERVED FOR EXTERNAL BACKFEED PROTECTION.

THIS DRAWING AND SPECIFICATIONS HEREIN ARE THE PROPERTY OF SCHNEIDER ELECTRIC AND SHALL NOT BE COPIED, REPRODUCED OR USED IN WHOLE OR IN PART, AS THE BASIS FOR THE MANUFACTURE OR SALE OF ITEMS WITHOUT WRITTEN PERMISSION FROM SCHNEIDER ELECTRIC. THIS DRAWING IS BASED UPON LATEST AVAILABLE INFORMATION AND IS SUBJECT TO CHANGE WITHOUT NOTICE.

Schneider Electric

TITLE: Schneider Electric Easy UPS 3S
CLA, LOW TOWER
40kVA, 400V, 3PH
WITHOUT BATTERY MODULES
REAR VIEW & DETAILS

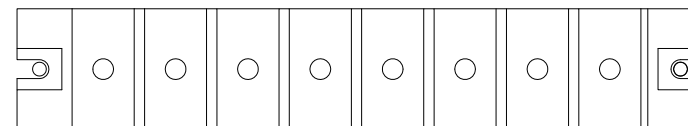
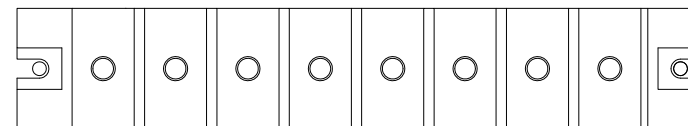
PROJECT: SUBMITTAL DRAWINGS SHEET 3 OF 6

DWG NO: E3SUPS40KH

DRAWN: K NAGENDRA	22-NOV-17	FIRST ANGLE PROJECTION
ENGINEER: CAMPBELL BAI	24-NOV-17	
APPROVED: FRANK ZHANG	24-NOV-17	

REV.

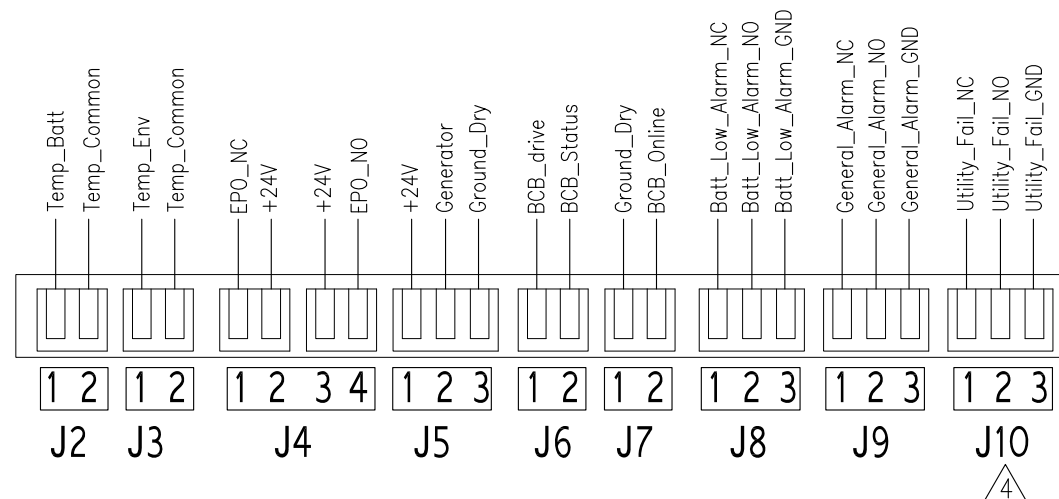
UIB/SSIB MAIN CONNECTION							
UIB	SSIB	UIB	SSIB	UIB	SSIB	UIB	SSIB
L1~		L2~		L3~		N	



UOB OUTPUT CONNECTION				BATTERY CONNECTION			
L1~	L2~	L3~	N	+	N	-	



DETAIL-A
CONNECTION TERMINALS
(ENLARGED VIEW, PROTECTIVE COVER REMOVED)



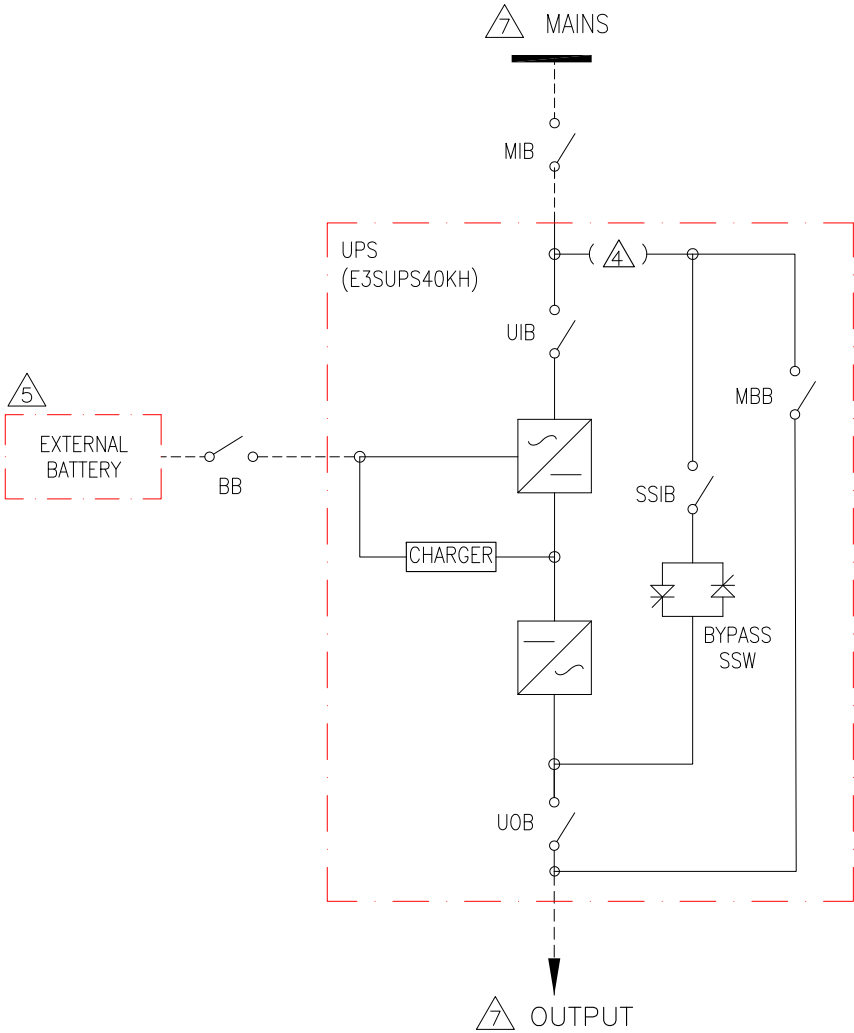
VIEW-B (ENLARGED)
DRY CONTACT INTERFACE (ENLARGED VIEW)



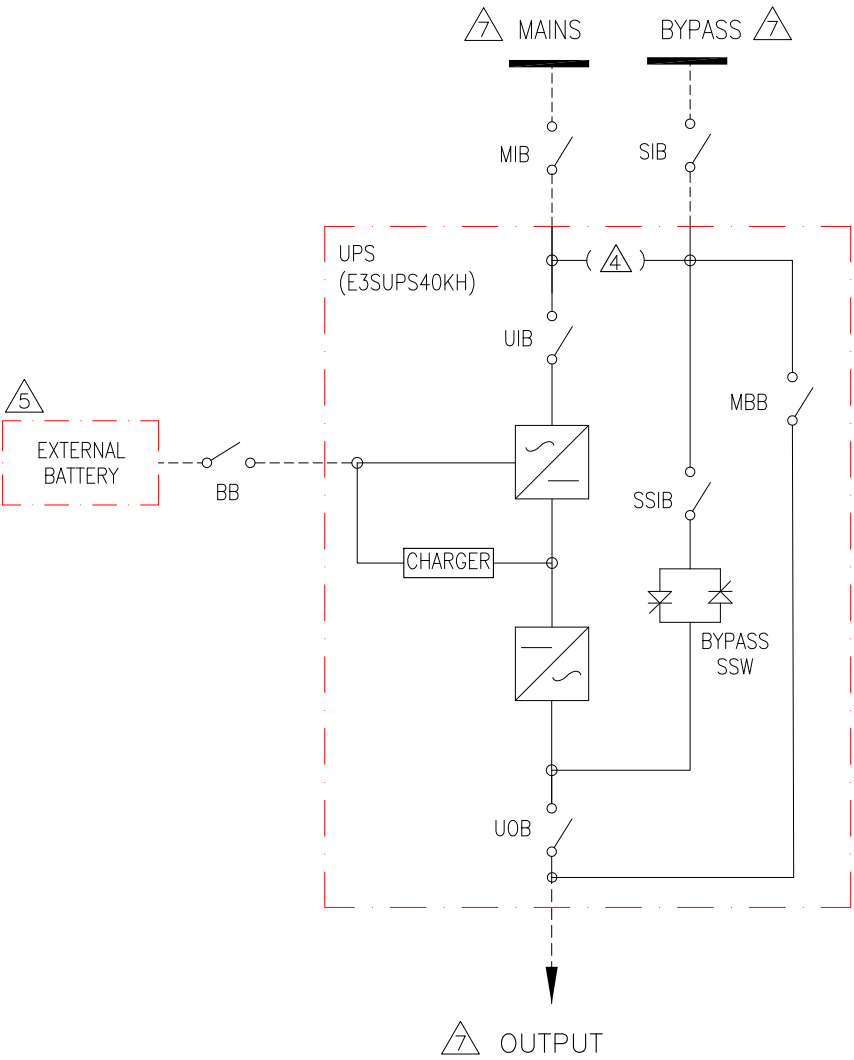
a) IN PARALLEL SYSTEM WITH TWO UPS's, REMOVE JUMPERS FROM J34, J36, J38, J40 AND J42 ON BOTH BOARDS.
b) IN PARALLEL SYSTEMS WITH THREE AND FOUR UPS's, REMOVE ALL JUMPERS.

FIRST
ANGLE
PROJECTION

SINGLE MAINS CONFIGURATION



DUAL MAINS CONFIGURATION



NOTES:

1. INSTALLATION SHALL COMPLY WITH ALL APPLICABLE NATIONAL AND LOCAL ELECTRICAL REGULATIONS.
2. REFER TO PRODUCT DOCUMENTATION FOR ADDITIONAL DETAILS PRIOR TO INSTALLATION AND SITE PREPARATION WORK
3. DRAWING DEPICTS POWER SYSTEM CONNECTIONS AND IT IS NOT REPRESENTATIVE OF PHYSICAL LAYOUT.
- △4. SINGLE MAINS CONFIGURATION IS DEFAULT.
FOR DUAL MAINS CONFIGURATION REMOVE THE 3 SHORTING STRAPS/WIRES.
- △5. BATTERIES CAN BE CONNECTED IN SERIES DEPENDING UPON THE RUNTIME REQUIREMENTS.
6. UP TO 4 UPS CAN BE CONNECTED IN PARALLEL.
- △7. REFER TO SHEET-6 FOR ELECTRICAL DATA.
8. CABLE LUGS ARE PROVIDED BY OTHERS.

LEGEND:

----- CABLE PROVIDED BY OTHERS

THIS DRAWING AND SPECIFICATIONS HEREIN ARE THE PROPERTY OF SCHNEIDER ELECTRIC AND SHALL NOT BE COPIED, REPRODUCED OR USED IN WHOLE OR IN PART, AS THE BASIS FOR THE MANUFACTURE OR SALE OF ITEMS WITHOUT WRITTEN PERMISSION FROM SCHNEIDER ELECTRIC. THIS DRAWING IS BASED UPON LATEST AVAILABLE INFORMATION AND IS SUBJECT TO CHANGE WITHOUT NOTICE.

Schneider Electric

TITLE: Schneider Electric Easy UPS 3S
CLA, LOW TOWER
40KVA, 400V, 3PH
WITHOUT BATTERY MODULES
SYSTEM ONLINE DIAGRAM

PROJECT: SUBMITTAL DRAWINGS SHEET 5 OF 6

DWG NO: E3SUPS40KH

DRAWN: K NAGENDRA 22-NOV-17

ENGINEER: CAMPBELL BAI 24-NOV-17

APPROVED: FRANK ZHANG 24-NOV-17

REV.

FIRST

ANGLE

PROJECTION

ELECTRICAL DATA SHEET	
UPS RATING	40kVA
INPUT SPECIFICATIONS	
INPUT VOLTAGE	380V/400V/415V
NOMINAL INPUT CURRENT (A)	65/61/59
MAXIMUM INPUT CURRENT (A)	78/73/71
INPUT CURRENT LIMITATION (A)	89/83/80
INPUT FREQUENCY	45-65Hz
INPUT WIRING	3P+N+PE
INPUT THDI	< 3%@ 10kVA, < 4%@ 15-40kVA
BYPASS SPECIFICATIONS	
BYPASS VOLTAGE	380V/400V/415V
MINIMUM BYPASS VOLTAGE	304/320/332
MAXIMUM BYPASS VOLTAGE	437/460/477
NOMINAL BYPASS CURRENT (A)	61/58/56
BYPASS FREQUENCY	50/60Hz
BYPASS WIRING	3P+N+PE
OUTPUT SPECIFICATIONS	
OUTPUT VOLTAGE	380V/400V/415V
NOMINAL OUTPUT CURRENT (A)	61/58/56
OUTPUT FREQUENCY	50/60Hz
OUTPUT WIRING	3P+N+PE
OUTPUT THDU	<3%@ 100% LINEAR LOAD, < 5.5%@ 100% NON-LINEAR LOAD
BATTERY SPECIFICATIONS	
CHARGING POWER	PROGRAMMABLE FROM 1% TO 20% OF UPS CAPACITY. DEFAULT IS 10%
MAXIMUM CHARGING POWER (W)	8000
NOMINAL BATTERY VOLTAGE (16-20 Blocks) (VDC)	+/-192 to +/-240
NOMINAL FLOAT VOLTAGE (16-20 Blocks) (VDC)	+/-216 to +/-270
END OF DISCHARGE VOLTAGE (16-20 Blocks) (FULL LOAD) (VDC)	+/-158 to +/-198
END OF DISCHARGE VOLTAGE (16-20 Blocks) (NO LOAD) (VDC)	+/-168 to +/-210
BATTERY CURRENT AT FULL LOAD AND NOMINAL BATTERY VOLTAGE (16-20 Blocks) (A)	111-89
BATTERY CURRENT AT FULL LOAD AND MINIMUM BATTERY VOLTAGE (16-20 Blocks) (A)	134-107
RIPPLE CURRENT	<5% C10
MAXIMUM SHORT CIRCUIT WITHSTAND	Icc=10kA
RECOMMENDED CABLE SIZES	
INPUT CABLE SIZE (mm ²)	25
BYPASS CABLE SIZE (mm ²)	25
OUTPUT CABLE SIZE (mm ²)	25
BATTERY INPUT CABLE SIZE (mm ²)	35
PE CABLE SIZE (mm ²)	16

NOTES:

- 1.INSTALLATION SHALL COMPLY WITH ALL APPLICABLE NATIONAL AND LOCAL ELECTRICAL REGULATIONS.
- 2.REFER TO PRODUCT DOCUMENTATION FOR ADDITIONAL DETAILS PRIOR TO INSTALLATION AND SITE PREPARATION WORK.

THIS DRAWING AND SPECIFICATIONS HEREIN ARE THE PROPERTY OF SCHNEIDER ELECTRIC AND SHALL NOT BE COPIED, REPRODUCED OR USED IN WHOLE OR IN PART, AS THE BASIS FOR THE MANUFACTURE OR SALE OF ITEMS WITHOUT WRITTEN PERMISSION FROM SCHNEIDER ELECTRIC. THIS DRAWING IS BASED UPON LATEST AVAILABLE INFORMATION AND IS SUBJECT TO CHANGE WITHOUT NOTICE.



TITLE: Schneider Electric Easy UPS 3S
CLA, LOW TOWER
40kVA, 400V, 3PH
WITHOUT BATTERY MODULES
ELECTRICAL DATA

PROJECT: SUBMITTAL DRAWINGS SHEET 6 OF 6

DWG NO: E3SUPS40KH

DRAWN:	K NAGENDRA	22-NOV-17
ENGINEER:	COMPBELL BAI	24-NOV-17
APPROVED:	FRANK ZHANG	24-NOV-17

REV.	
FIRST ANGLE PROJECTION	