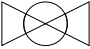

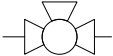



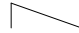


ACRD600-601-602 - In Row-RD, Air Cooled

Sheet No.	Component /Detail	Description
1	Drawing Guide	ACRD600-601-602, 200-240V 50-60 Hz, 460-480V 60 Hz, 380-415V 50-60Hz Air Cooled, Drawing guide.
2	Isometric External View	ACRD600-601-602, 200-240V 50-60 Hz, 460-480V 60 Hz, 380-415V 50-60Hz Air Cooled, Isometric External View.
3	General Arrangement	ACRD600-601-602, 200-240V 50-60 Hz, 460-480V 60 Hz, 380-415V 50-60Hz Air Cooled, General Arrangement.
4	Top & Bottom View	ACRD600-601-602, 200-240V 50-60 Hz, 460-480V 60 Hz, 380-415V 50-60Hz Air Cooled, Top & Bottom View.
5	Anchoring Details	ACRD600-601-602, 200-240V 50-60 Hz, 460-480V 60 Hz, 380-415V 50-60Hz Air Cooled, Anchoring Details.
6-8	Internal View	ACRD600-601-602, 200-240V 50-60 Hz, 460-480V 60 Hz, 380-415V 50-60Hz Air Cooled, Internal View.
9	Drain Line Pump Conn.	ACRD600-601-602, 200-240V 50-60 Hz, 460-480V 60 Hz, 380-415V 50-60Hz Air Cooled, Drain Line Pump Conn.
10	Supply Return Conn.	ACRD600-601-602, 200-240V 50-60 Hz, 460-480V 60 Hz, 380-415V 50-60Hz Air Cooled, Supply Return Conn.
11	User Interface	ACRD600-601-602, 200-240V 50-60 Hz, 460-480V 60 Hz, 380-415V 50-60Hz Air Cooled, User Interface.

LEGEND			
SYMBOL	DESCRIPTION	SYMBOL	DESCRIPTION
	SHUT OFF VALVE		P-Trap
	HEAD PRESSURE CONTROL VALVE		S-Trap
	PRESSURE RELIEF VALVE		Inverted Trap
	CHECK VALVE		

THIS DRAWING AND SPECIFICATIONS HEREIN ARE THE PROPERTY OF SCHNEIDER ELECTRIC AND SHALL NOT BE COPIED, REPRODUCED OR USED IN WHOLE OR IN PART, AS THE BASIS FOR THE MANUFACTURE OR SALE OF ITEMS WITHOUT WRITTEN PERMISSION FROM SCHNEIDER ELECTRIC. THIS DRAWING IS BASED UPON LATEST AVAILABLE INFORMATION AND IS SUBJECT TO CHANGE WITHOUT NOTICE.

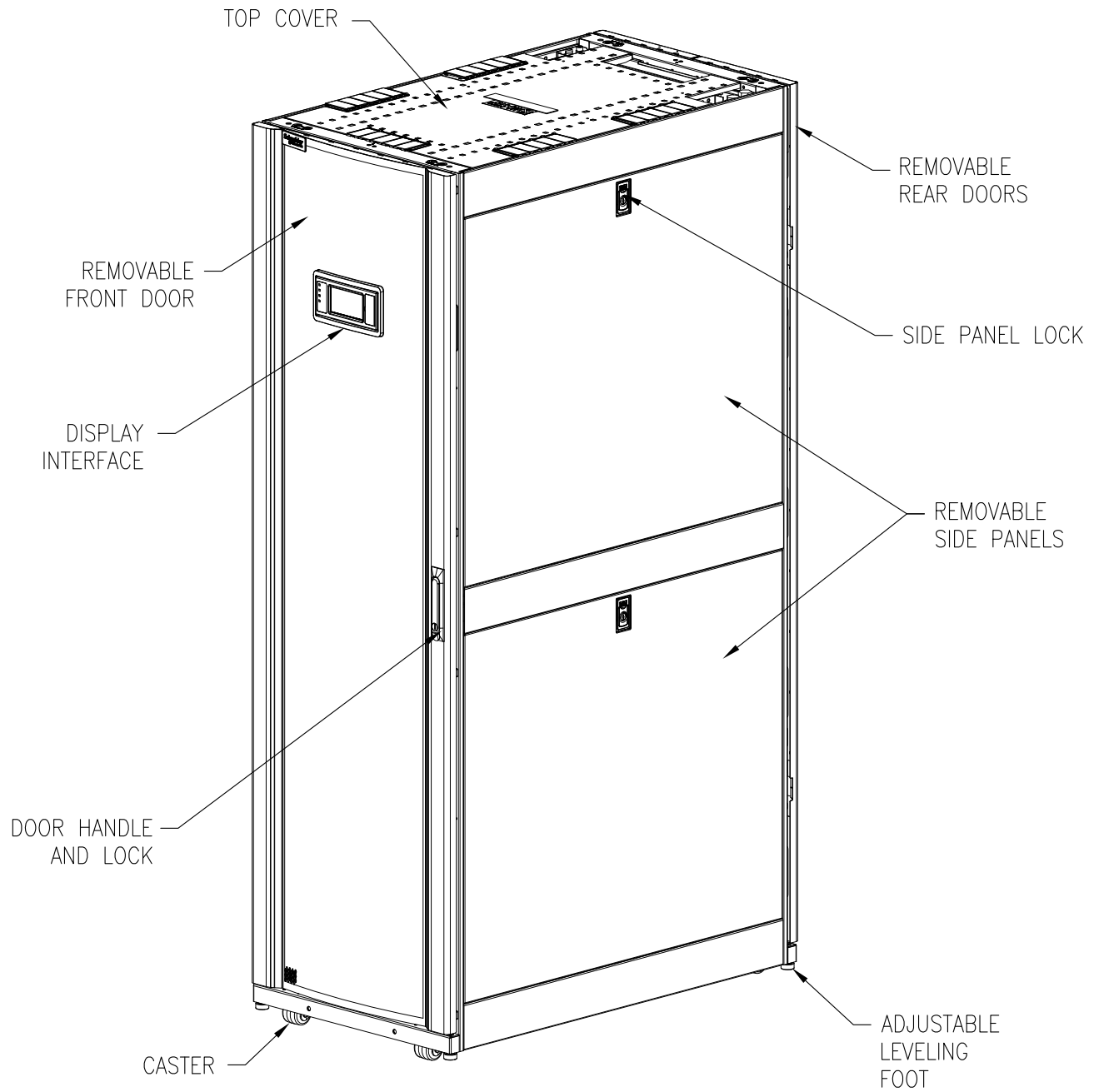


TITLE: InRow DIRECT EXPANSION
InRow RD, 600mm, AIR COOLED
ACRD600:200-240V 50/60Hz, ACRD601:460-480V 60Hz
ACRD602 : 380-415V, 50/60Hz
DRAWING GUIDE

DWG NO: ACRD600-601-602 REV. 1

DRAWN: JAYAPRAKASH 21-MAR-17 ANGLE
ENGINEER: XUXIANG ZHANG 21-MAR-17 PROJECTION: N/A

PROJECT: DRAWINGS SHEET 1 OF 11 APPROVED: N SCHWEISSGUTH/H YANG 21-MAR-17



ISOMETRIC VIEW (External)

- NOTES:
- 1.INSTALLATION SHALL COMPLY WITH ALL APPLICABLE NATIONAL, STATE AND LOCAL ELECTRICAL REGULATIONS.
 - 2.REFER TO PRODUCT DOCUMENTATION FOR ADDITIONAL DETAILS PRIOR TO INSTALLATION AND SITE PREPARATION WORK

THIS DRAWING AND SPECIFICATIONS HEREIN ARE THE PROPERTY OF SCHNEIDER ELECTRIC AND SHALL NOT BE COPIED, REPRODUCED OR USED IN WHOLE OR IN PART, AS THE BASIS FOR THE MANUFACTURE OR SALE OF ITEMS WITHOUT WRITTEN PERMISSION FROM SCHNEIDER ELECTRIC. THIS DRAWING IS BASED UPON LATEST AVAILABLE INFORMATION AND IS SUBJECT TO CHANGE WITHOUT NOTICE.



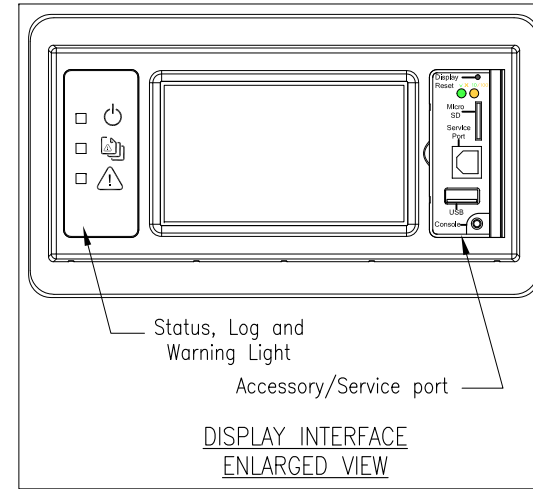
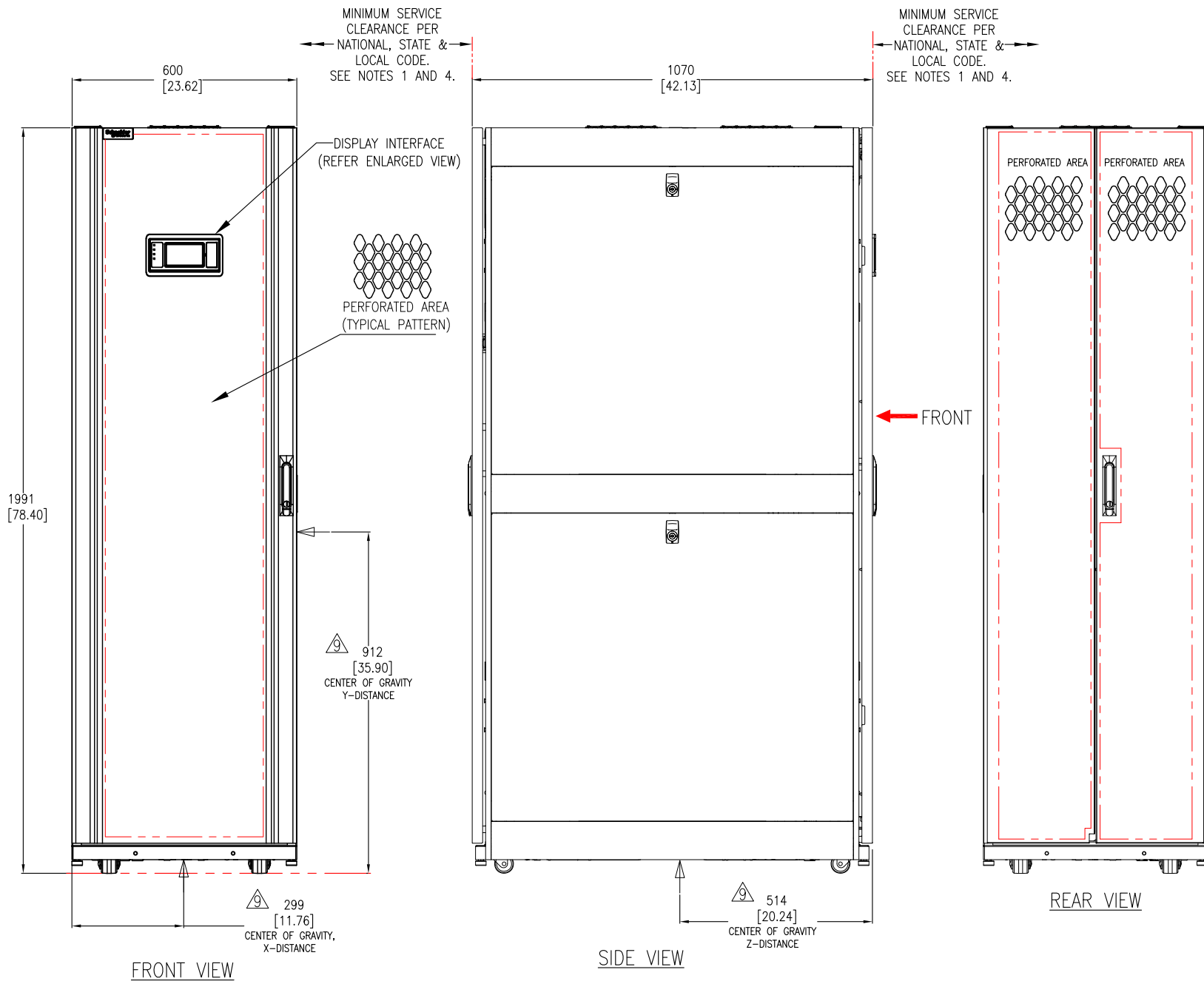
TITLE: InRow DIRECT EXPANSION
InRow RD, 600mm, AIR COOLED
ACRD600:200-240V 50/60Hz, ACRD601:460-480V 60Hz
ACRD602 : 380-415V, 50/60Hz
ISOMETRIC EXTERNAL VIEW

PROJECT: DRAWINGS SHEET 2 OF 11

DWG NO: ACRD600-601-602
DRAWN: JAYAPRAKASH 21-MAR-17
ENGINEER: XUXIANG ZHANG 21-MAR-17

APPROVED: N SCHWEISSGUTH/H YANG 21-MAR-17

REV. 1
ANGLE PROJECTION: N/A



NOTES:

1. INSTALLATION SHALL COMPLY WITH ALL APPLICABLE NATIONAL, STATE AND LOCAL ELECTRICAL REGULATIONS..
2. REFER TO PRODUCT DOCUMENTATION FOR ADDITIONAL DETAILS PRIOR TO INSTALLATION AND SITE PREPARATION WORK.
3. UNLESS OTHERWISE SPECIFIED, ALL DIMENSIONS ARE IN MILLIMETERS [INCHES].
4. A MINIMUM OF 1200 mm [48"] CLEARANCE IS REQUIRED IN FRONT OR REAR OF THE ACRD UNIT IF THE UNIT HAS TO BE REMOVED FROM THE ROW.
5. PIPING CONFIGURATION – TOP OR BOTTOM OF UNIT.
6. FRONT AND REAR ACCESS IS REQUIRED FOR SERVICE.
7. NET WEIGHT OF UNIT:
ACRD600: 402 kg [886 lb]
ACRD601/ACRD602: 391 kg [862 LB].
8. FLOOR LOADING:
ACRD600: 626 kg/meter² [128 lb/ft²].
ACRD601/ACRD602: 609 kg/meter² [125 lb/ft²].
- △ 9. THIS INFORMATION PROVIDES APPROXIMATE CENTER OF GRAVITY CALCULATION.

THIS DRAWING AND SPECIFICATIONS HEREIN ARE THE PROPERTY OF SCHNEIDER ELECTRIC AND SHALL NOT BE COPIED, REPRODUCED OR USED IN WHOLE OR IN PART, AS THE BASIS FOR THE MANUFACTURE OR SALE OF ITEMS WITHOUT WRITTEN PERMISSION FROM SCHNEIDER ELECTRIC. THIS DRAWING IS BASED UPON LATEST AVAILABLE INFORMATION AND IS SUBJECT TO CHANGE WITHOUT NOTICE.



TITLE: InRow DIRECT EXPANSION
InRow RD, 600mm, AIR COOLED
ACRD600:200-240V 50/60Hz, ACRD601:460-480V 60Hz
ACRD602 : 380-415V, 50/60Hz
GENERAL ARRANGEMENT

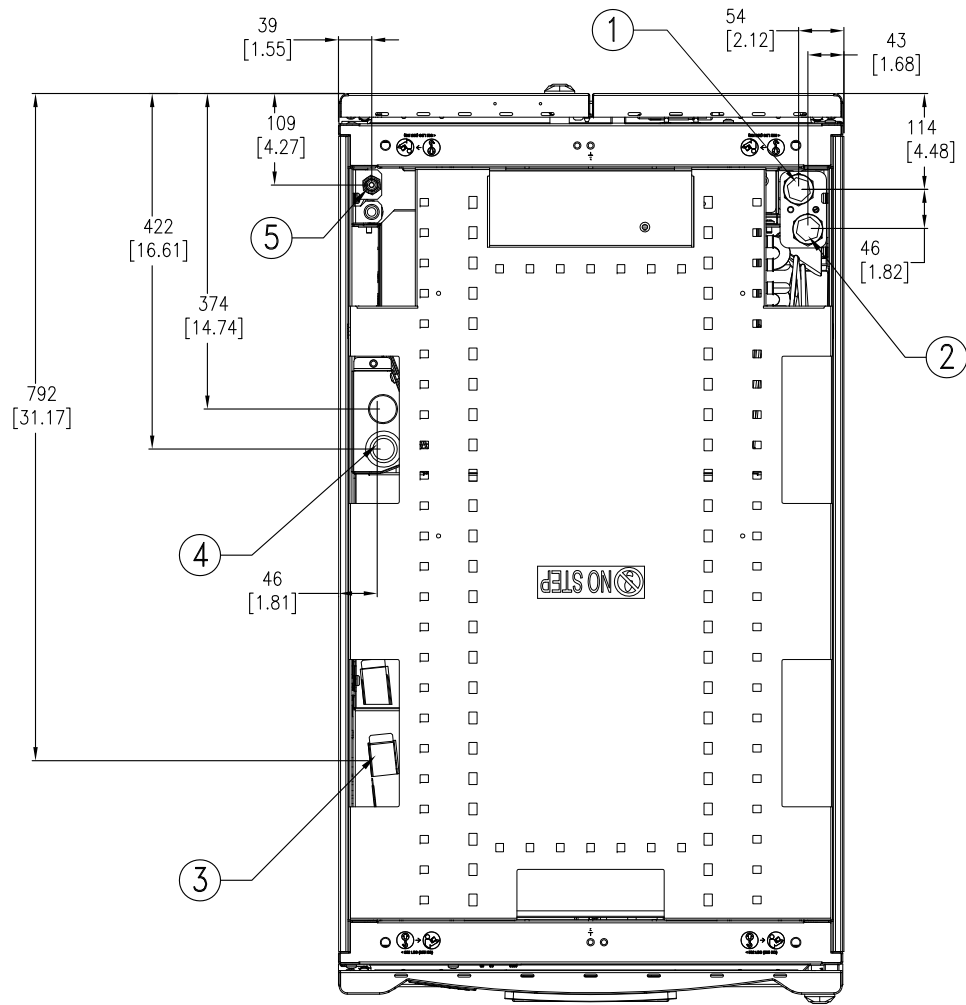
DWG NO: ACRD600-601-602 REV. 1

DRAWN: JAYAPRAKASH 21-MAR-17
ENGINEER: XUXIANG ZHANG 21-MAR-17

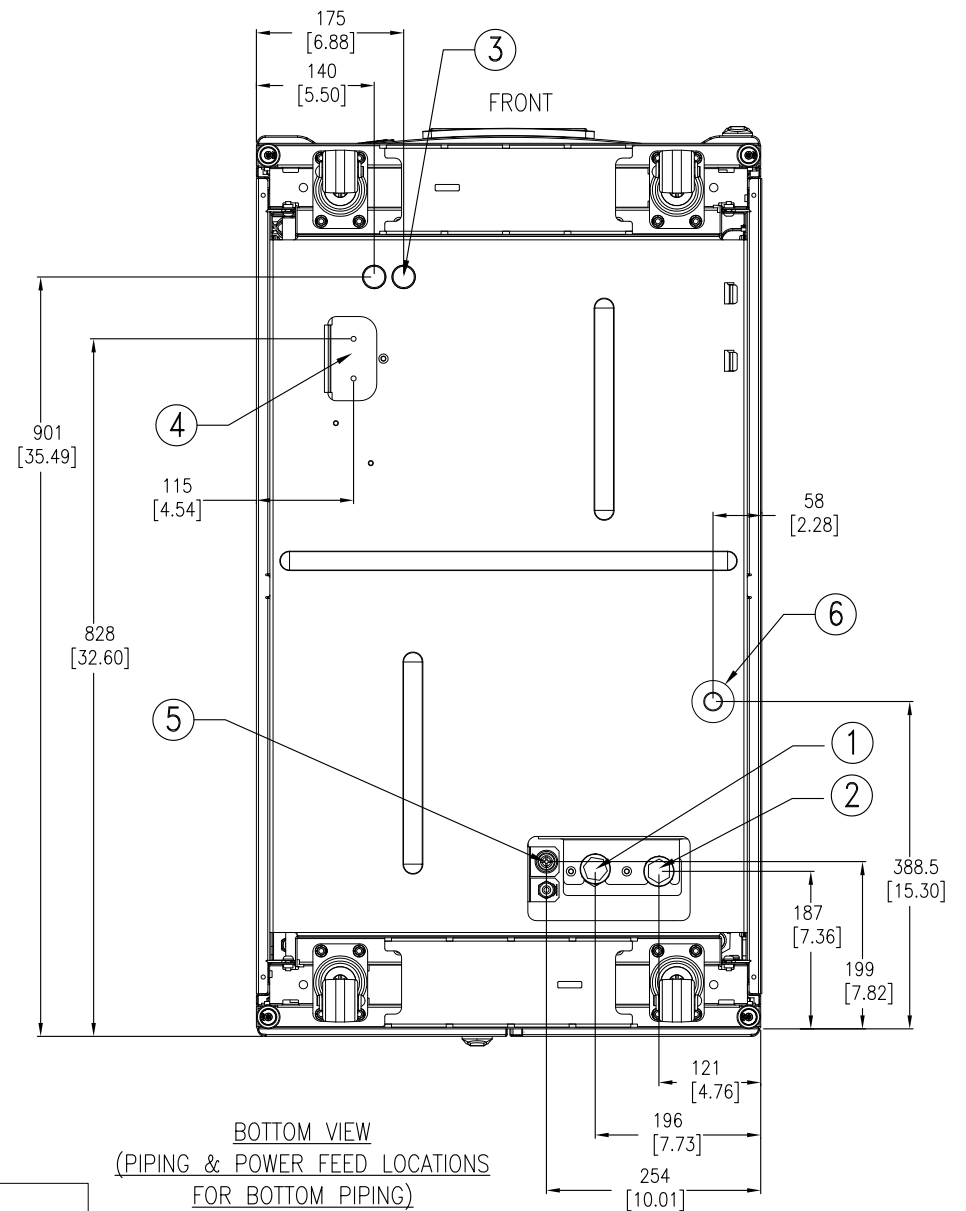
FIRST ANGLE PROJECTION

PROJECT: DRAWINGS SHEET 3 OF 11

APPROVED: N SCHWEISSGUTH/H YANG 21-MAR-17



FRONT
TOP VIEW
(PIPING & POWER FEED LOCATIONS
FOR TOP PIPING)



FRONT
BOTTOM VIEW
(PIPING & POWER FEED LOCATIONS
FOR BOTTOM PIPING)

POWER AND PIPING DETAILS	
1.	REFRIGERANT DISCHARGE LINE
2.	REFRIGERANT LIQUID INLET LINE
3.	COMMUNICATION CONNECTIONS {27.80mm[1.09"]}
4.	POWER CONNECTIONS.
5.	CONDENSATE DRAIN {12.7mm[1/2"]ID-15.875mm[5/8"] OD}
6.	CONDENSATE OVER FLOW {25.00mm[0.98"]ID-50.00mm[1.97"]OD}

NOTES:
 1. INSTALLATION SHALL COMPLY WITH ALL APPLICABLE NATIONAL, STATE AND LOCAL ELECTRICAL REGULATIONS.
 2. REFER TO PRODUCT DOCUMENTATION FOR ADDITIONAL DETAILS PRIOR TO INSTALLATION AND SITE PREPARATION WORK.
 3. UNLESS OTHERWISE SPECIFIED, ALL DIMENSIONS ARE IN MILLIMETERS [INCHES].

THIS DRAWING AND SPECIFICATIONS HEREIN ARE THE PROPERTY OF SCHNEIDER ELECTRIC AND SHALL NOT BE COPIED, REPRODUCED OR USED IN WHOLE OR IN PART, AS THE BASIS FOR THE MANUFACTURE OR SALE OF ITEMS WITHOUT WRITTEN PERMISSION FROM SCHNEIDER ELECTRIC. THIS DRAWING IS BASED UPON LATEST AVAILABLE INFORMATION AND IS SUBJECT TO CHANGE WITHOUT NOTICE.

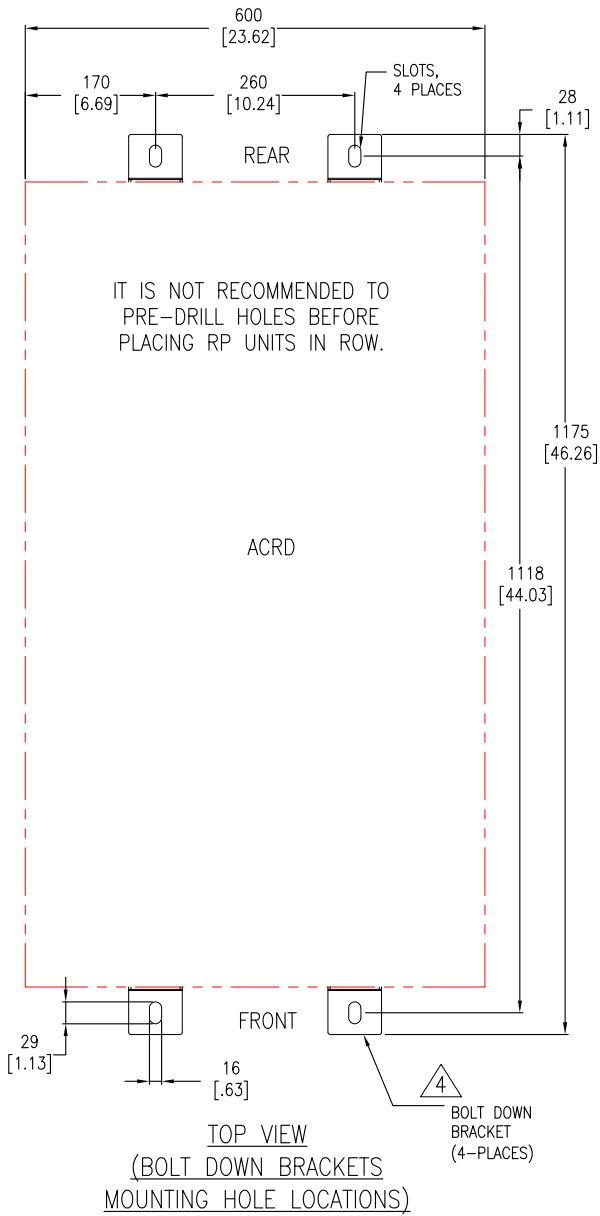


TITLE: InRow DIRECT EXPANSION
 InRow RD, 600mm, AIR COOLED
 ACRD600:200-240V 50/60Hz, ACRD601:460-480V 60Hz
 ACRD602 : 380-415V, 50/60Hz
 TOP VIEW & BOTTOM VIEW
 PROJECT: DRAWINGS SHEET 4 OF 11

DWG NO: ACRD600-601-602
 DRAWN: JAYAPRAKASH 21-MAR-17
 ENGINEER: XUXIANG ZHANG 21-MAR-17
 APPROVED: N SCHWEISSGUTH/H YANG 21-MAR-17

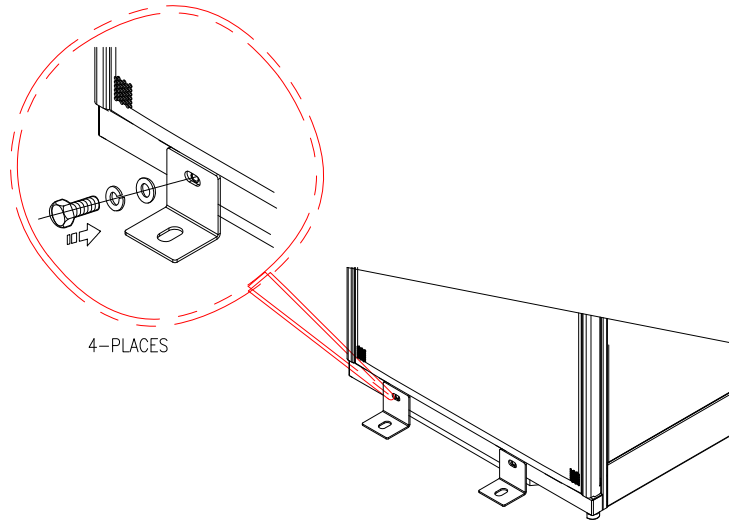
REV. 1
 FIRST ANGLE PROJECTION

ANCHORING DETAILS

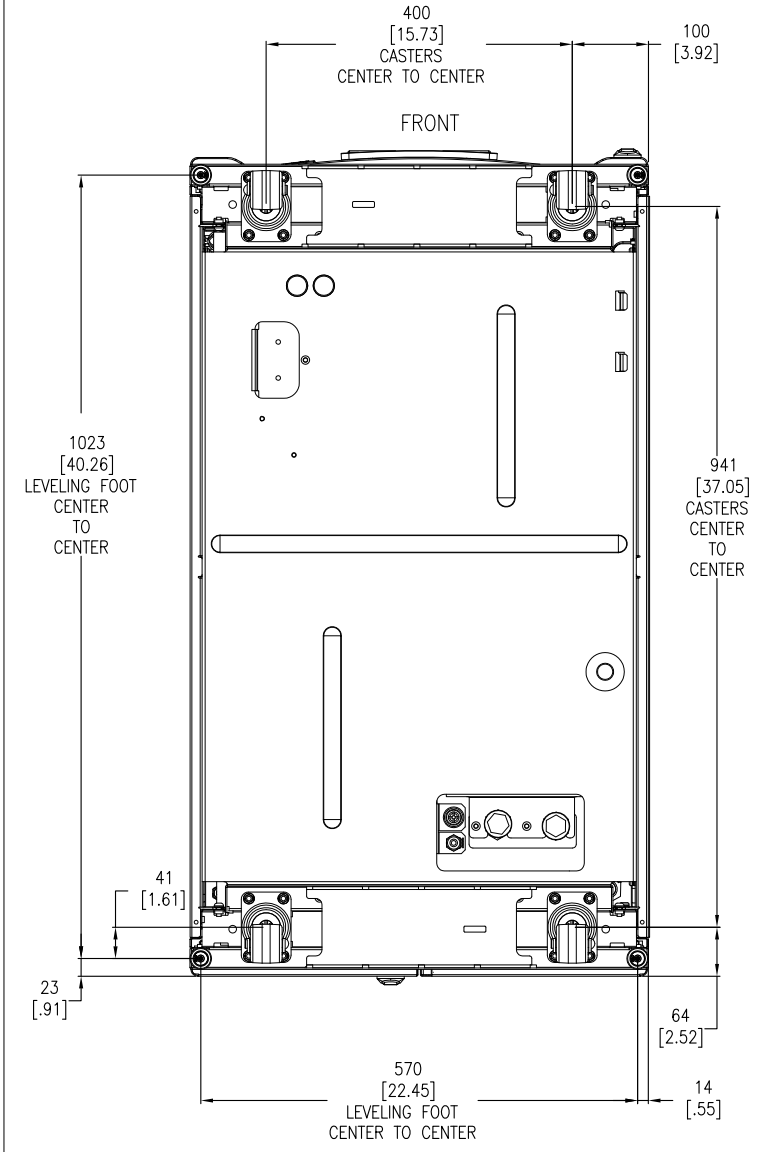


IT IS NOT RECOMMENDED TO PRE-DRILL HOLES BEFORE PLACING RP UNITS IN ROW.

STABILIZING THE InRow RD:
TO PREVENT THE ENCLOSURE FROM MOVING FROM ITS FINAL LOCATION (IF NOT BAYED TO ANOTHER DEVICE), USE AR7701(BOLT-DOWN KIT) ATTACH THE BRACKETS TO THE UNIT AS SHOWN. USE CODE COMPLIANT FASTENERS TO SECURE THE UNIT TO THE FLOOR.



BOTTOM VIEW



BOTTOM VIEW
(WITH CASTERS & LEVELLING FOOT DETAILS)

- NOTES:**
1. INSTALLATION SHALL COMPLY WITH ALL APPLICABLE NATIONAL, STATE AND LOCAL ELECTRICAL REGULATIONS.
 2. REFER TO PRODUCT DOCUMENTATION FOR ADDITIONAL DETAILS PRIOR TO INSTALLATION AND SITE PREPARATION WORK.
 3. UNLESS OTHERWISE SPECIFIED, ALL DIMENSIONS ARE IN MILLIMETERS [INCHES].
 - △ 4. BOLT-DOWN KIT (SKU# AR7701) IS OPTIONAL AND HAS TO BE ORDERED SEPARATELY.

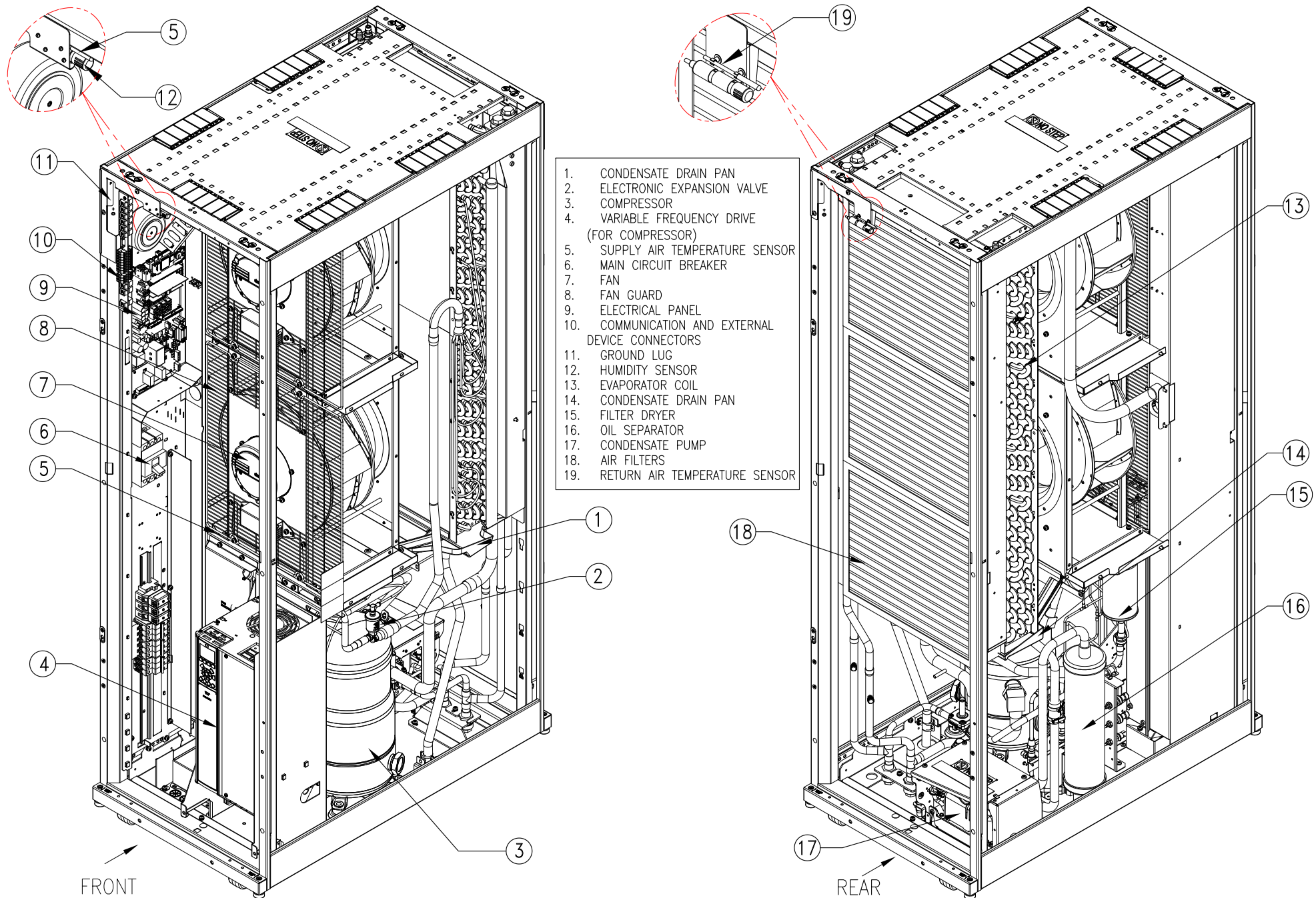
THIS DRAWING AND SPECIFICATIONS HEREIN ARE THE PROPERTY OF SCHNEIDER ELECTRIC AND SHALL NOT BE COPIED, REPRODUCED OR USED IN WHOLE OR IN PART, AS THE BASIS FOR THE MANUFACTURE OR SALE OF ITEMS WITHOUT WRITTEN PERMISSION FROM SCHNEIDER ELECTRIC. THIS DRAWING IS BASED UPON LATEST AVAILABLE INFORMATION AND IS SUBJECT TO CHANGE WITHOUT NOTICE.



TITLE: InRow DIRECT EXPANSION
InRow RD, 600mm, AIR COOLED
ACRD600:200-240V 50/60Hz, ACRD601:460-480V 60Hz
ACRD602 : 380-415V, 50/60Hz
ANCHORING DETAILS

DWG NO: ACRD600-601-602 REV. 1
DRAWN: JAYAPRAKASH 21-MAR-17
ENGINEER: XUXIANG ZHANG 21-MAR-17
APPROVED: N SCHWEISSGUTH/H YANG 21-MAR-17

FIRST ANGLE PROJECTION



NOTES:

1. INSTALLATION SHALL COMPLY WITH ALL APPLICABLE NATIONAL, STATE AND LOCAL ELECTRICAL REGULATIONS.
2. REFER TO PRODUCT DOCUMENTATION FOR ADDITIONAL DETAILS PRIOR TO INSTALLATION AND SITE PREPARATION WORK.
3. SOME MECHANICAL COMPONENTS HAVE BEEN OMITTED FOR PURPOSE OF CLARITY.

THIS DRAWING AND SPECIFICATIONS HEREIN ARE THE PROPERTY OF SCHNEIDER ELECTRIC AND SHALL NOT BE COPIED, REPRODUCED OR USED IN WHOLE OR IN PART, AS THE BASIS FOR THE MANUFACTURE OR SALE OF ITEMS WITHOUT WRITTEN PERMISSION FROM SCHNEIDER ELECTRIC. THIS DRAWING IS BASED UPON LATEST AVAILABLE INFORMATION AND IS SUBJECT TO CHANGE WITHOUT NOTICE.



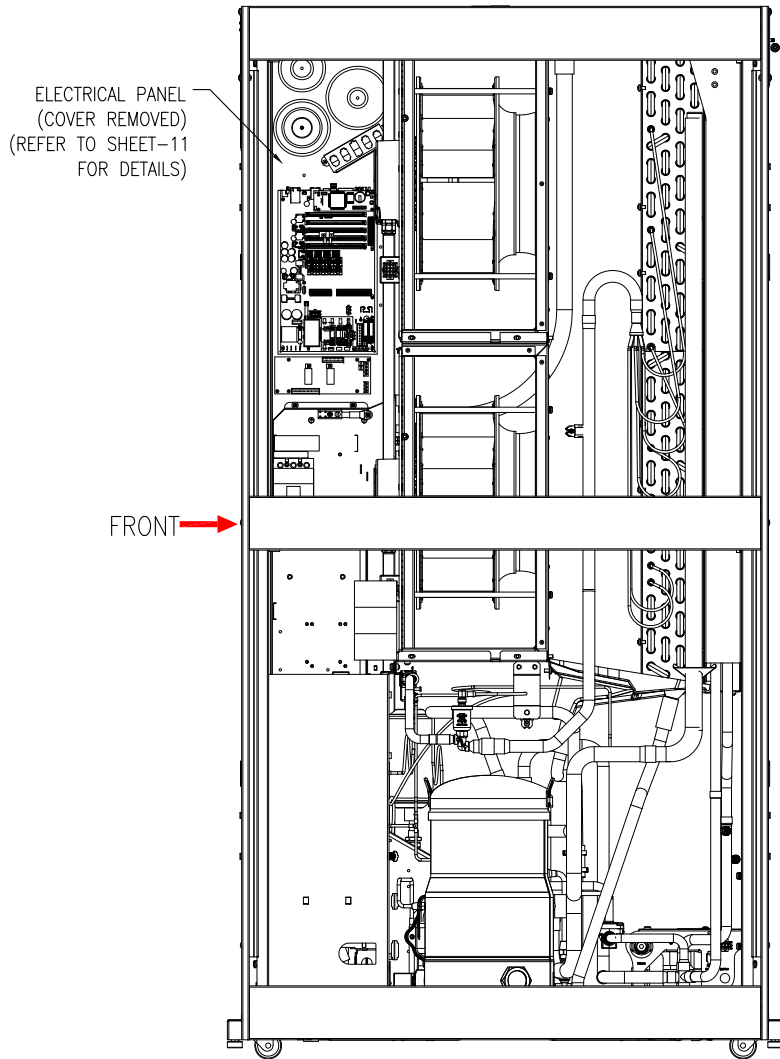
TITLE: InRow DIRECT EXPANSION
 InRow RD, 600mm, AIR COOLED
 ACRD600:200-240V 50/60Hz, ACRD601:460-480V 60Hz
 ACRD602 : 380-415V, 50/60Hz
 ISOMETRIC INTERNAL VIEW

PROJECT: DRAWINGS SHEET 6 OF 11

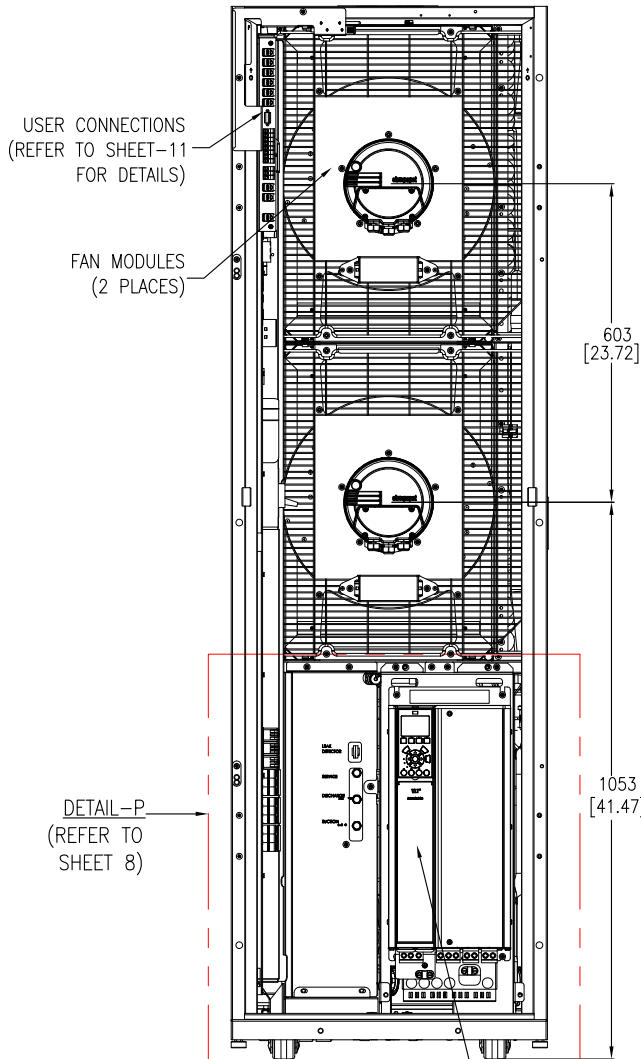
DWG NO: ACRD600-601-602

DRAWN: JAYAPRAKASH	21-MAR-17
ENGINEER: XUXIANG ZHANG	21-MAR-17
APPROVED: N SCHWEISSGUTH/H YANG	21-MAR-17

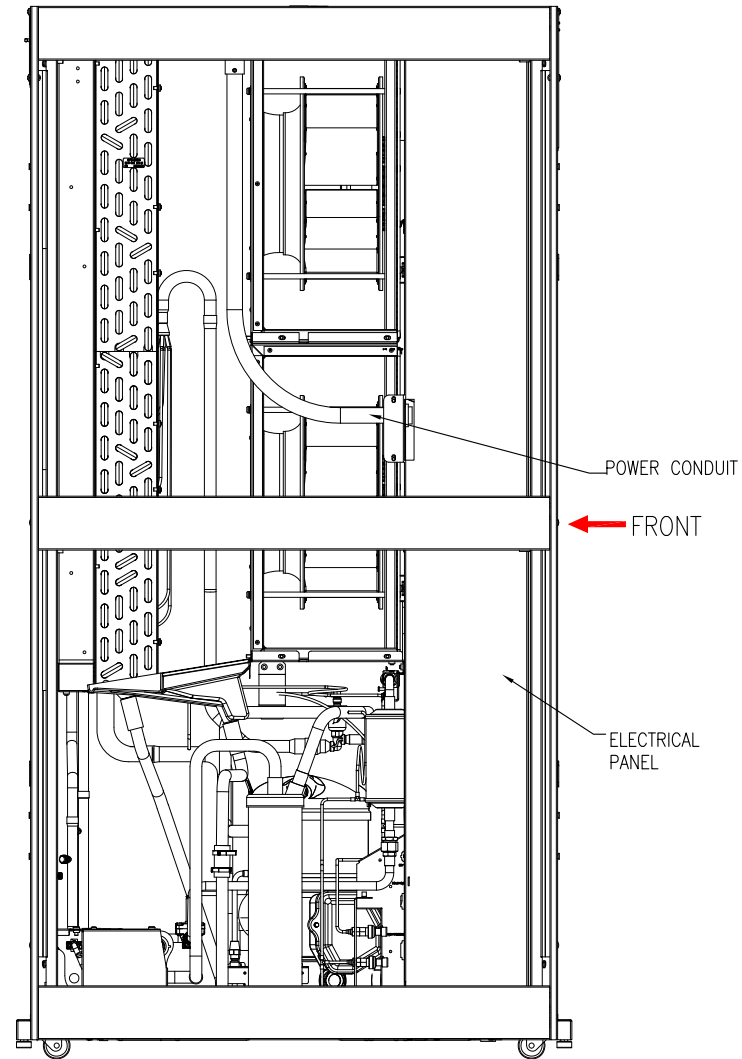
REV. 1
 ANGLE PROJECTION



RIGHT SIDE VIEW
(SIDE COVERS REMOVED)



FRONT VIEW
(DOOR REMOVED)



LEFT SIDE VIEW
(SIDE COVERS REMOVED)

- NOTES:
1. INSTALLATION SHALL COMPLY WITH ALL APPLICABLE NATIONAL, STATE AND LOCAL ELECTRICAL REGULATIONS.
 2. REFER TO PRODUCT DOCUMENTATION FOR ADDITIONAL DETAILS PRIOR TO INSTALLATION AND SITE PREPARATION WORK.
 3. UNLESS OTHERWISE SPECIFIED, ALL DIMENSIONS ARE IN MILLIMETERS [INCHES].
 4. SOME MECHANICAL COMPONENTS HAVE BEEN OMITTED FOR PURPOSE OF CLARITY.

THIS DRAWING AND SPECIFICATIONS HEREIN ARE THE PROPERTY OF SCHNEIDER ELECTRIC AND SHALL NOT BE COPIED, REPRODUCED OR USED IN WHOLE OR IN PART, AS THE BASIS FOR THE MANUFACTURE OR SALE OF ITEMS WITHOUT WRITTEN PERMISSION FROM SCHNEIDER ELECTRIC. THIS DRAWING IS BASED UPON LATEST AVAILABLE INFORMATION AND IS SUBJECT TO CHANGE WITHOUT NOTICE.

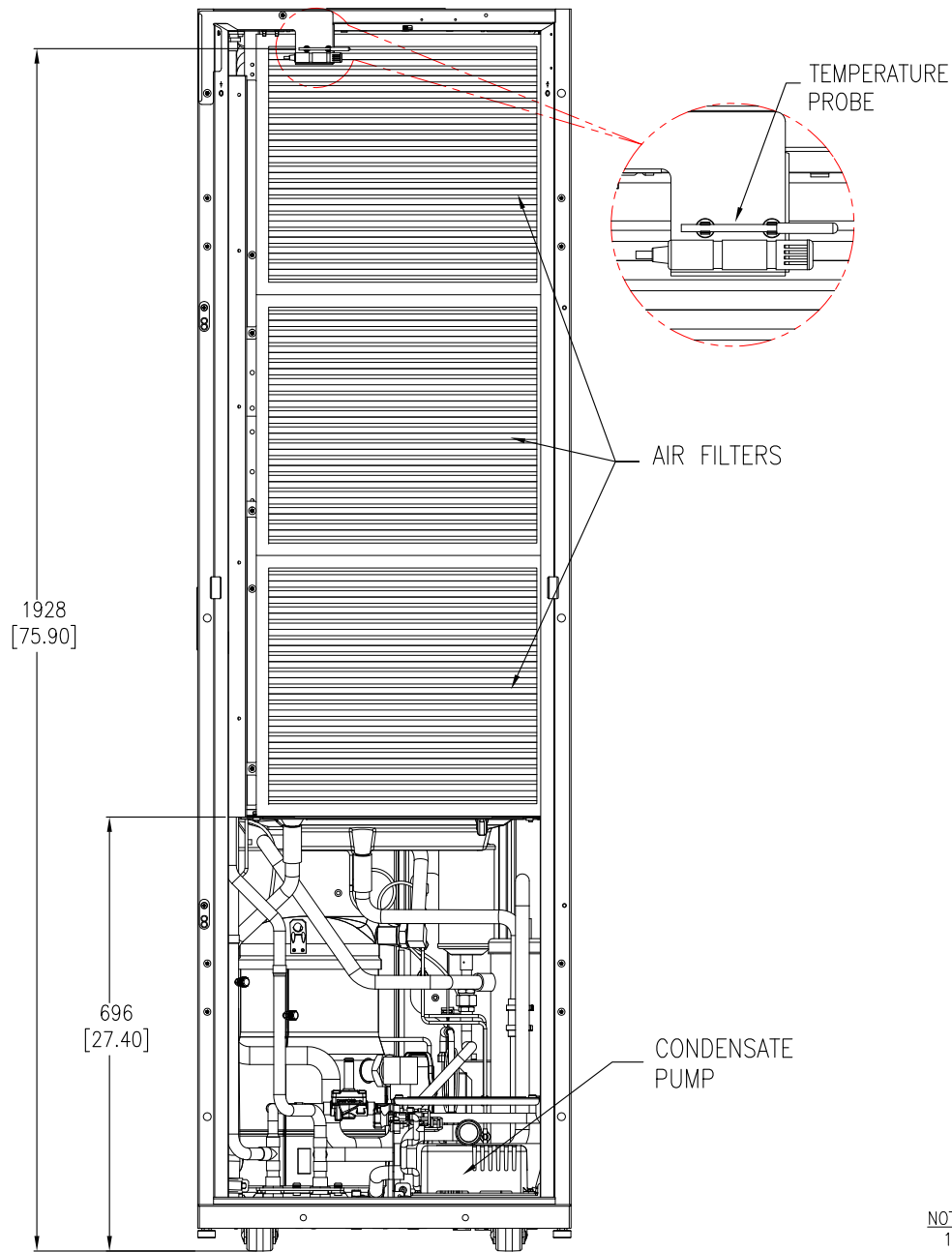


TITLE: InRow DIRECT EXPANSION
InRow RD, 600mm, AIR COOLED
ACRD600-200-240V 50/60Hz, ACRD601-460-480V 60Hz
ACRD602 : 380-415V, 50/60Hz
INTERNAL VIEW

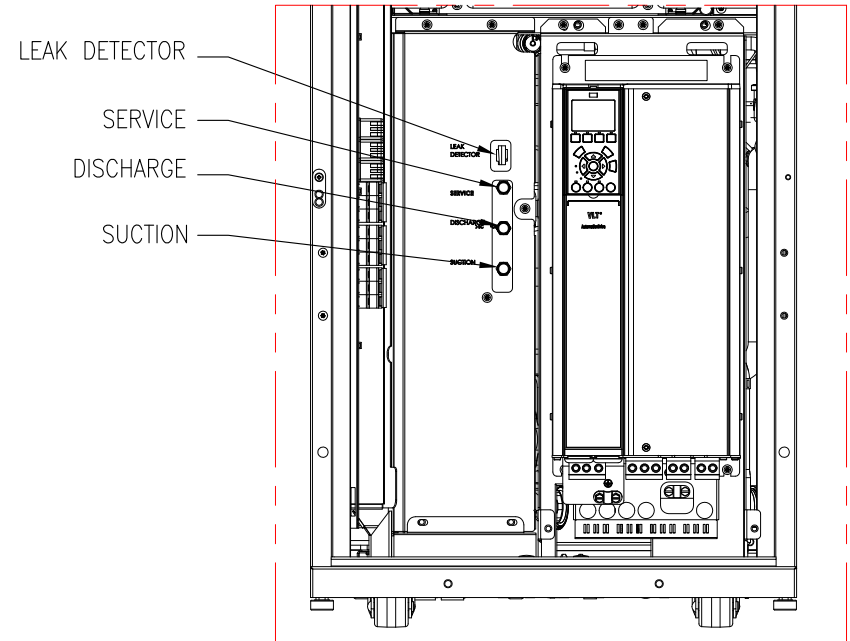
DWG NO: ACRD600-601-602
DRAWN: JAYAPRAKASH
ENGINEER: XUXIANG ZHANG
APPROVED: N SCHWEISSGUTH/H YANG

REV. 1
21-MAR-17
21-MAR-17
21-MAR-17
FIRST ANGLE PROJECTION

PROJECT: DRAWINGS SHEET 7 OF 11



REAR VIEW
(DOORS REMOVED)



DETAIL-P
(ENLARGED VIEW)

NOTES:

1. INSTALLATION SHALL COMPLY WITH ALL APPLICABLE NATIONAL, STATE AND LOCAL ELECTRICAL REGULATIONS.
2. REFER TO PRODUCT DOCUMENTATION FOR ADDITIONAL DETAILS PRIOR TO INSTALLATION AND SITE PREPARATION WORK.
3. UNLESS OTHERWISE SPECIFIED, ALL DIMENSIONS ARE IN MILLIMETERS [INCHES].
4. SOME MECHANICAL COMPONENTS HAVE BEEN OMITTED FOR PURPOSE OF CLARITY.

THIS DRAWING AND SPECIFICATIONS HEREIN ARE THE PROPERTY OF SCHNEIDER ELECTRIC AND SHALL NOT BE COPIED, REPRODUCED OR USED IN WHOLE OR IN PART, AS THE BASIS FOR THE MANUFACTURE OR SALE OF ITEMS WITHOUT WRITTEN PERMISSION FROM SCHNEIDER ELECTRIC. THIS DRAWING IS BASED UPON LATEST AVAILABLE INFORMATION AND IS SUBJECT TO CHANGE WITHOUT NOTICE.

Schneider Electric

TITLE: InRow DIRECT EXPANSION
InRow RD, 600mm, AIR COOLED
ACRD600:200-240V 50/60Hz, ACRD601:460-480V 60Hz
ACRD602 : 380-415V, 50/60Hz
INTERNAL VIEW (REAR) AND DETAILS

DWG NO: ACRD600-601-602

REV. 1

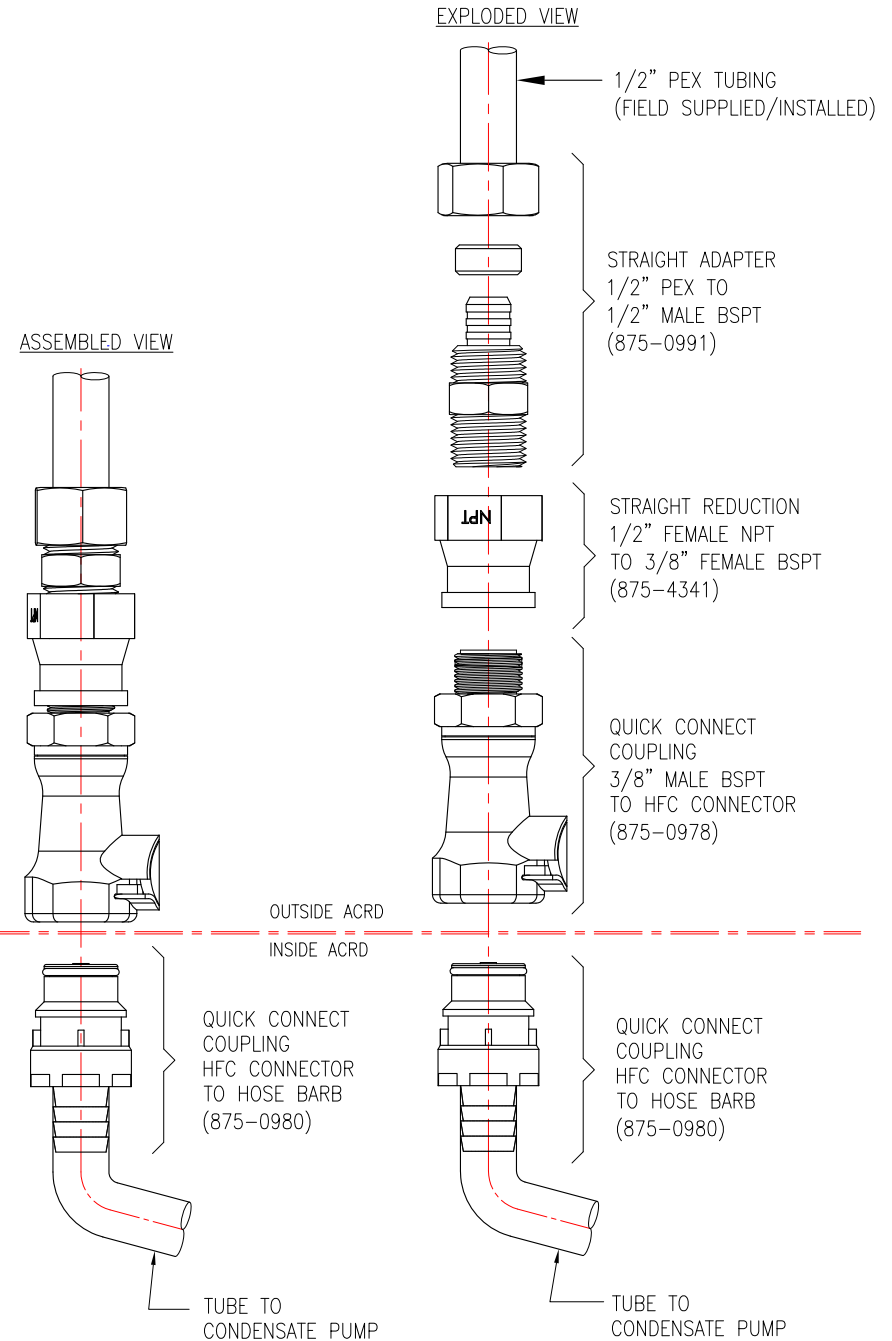
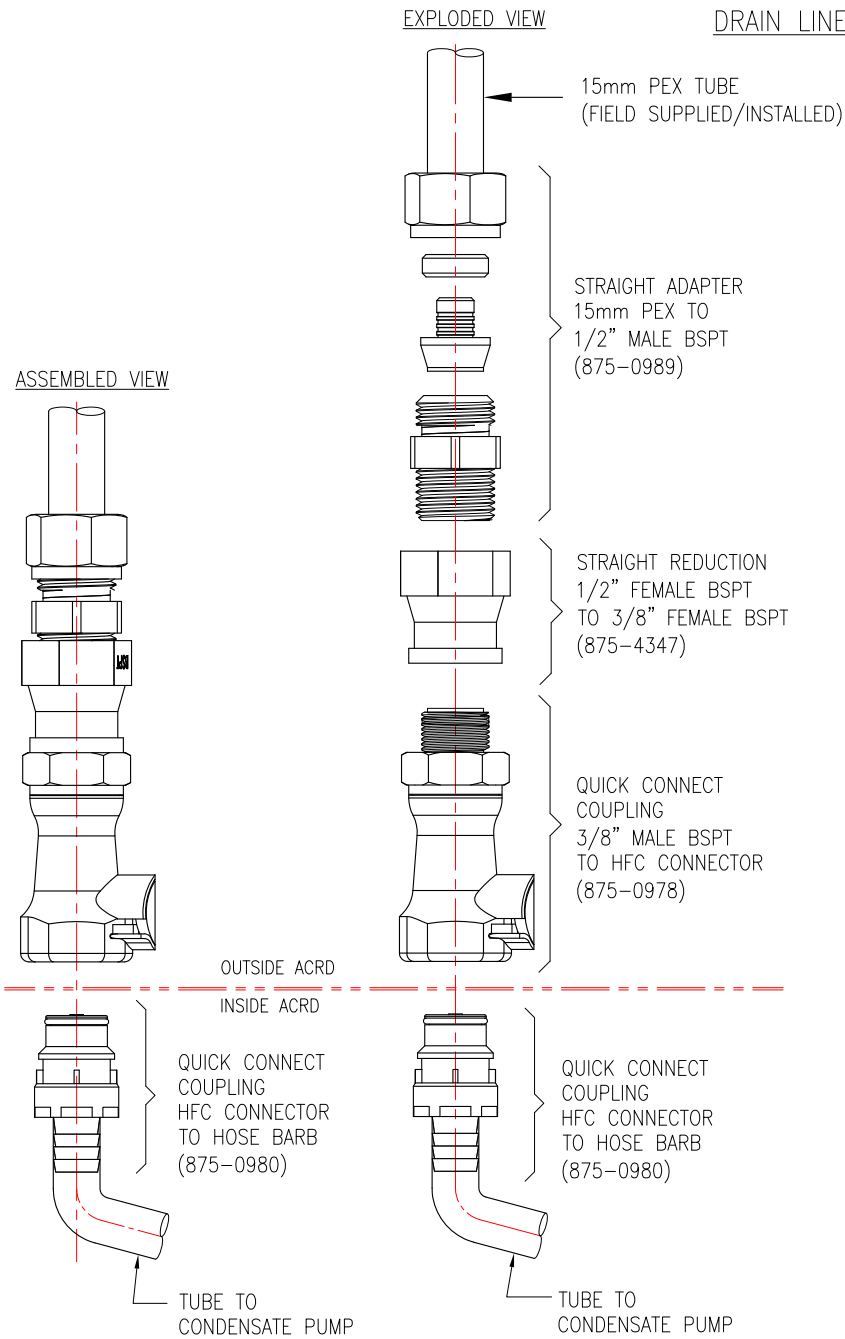
DRAWN: JAYAPRAKASH 21-MAR-17
ENGINEER: XUXIANG ZHANG 21-MAR-17

FIRST ANGLE PROJECTION

PROJECT: DRAWINGS SHEET 8 OF 11

APPROVED: N SCHWEISSGUTH/H YANG 21-MAR-17

DRAIN LINE FROM CONDENSATE PUMP



NOTES:
 1. INSTALLATION SHALL COMPLY WITH ALL APPLICABLE NATIONAL, STATE AND LOCAL ELECTRICAL REGULATIONS.
 2. REFER TO PRODUCT DOCUMENTATION FOR ADDITIONAL DETAILS PRIOR TO INSTALLATION AND SITE PREPARATION WORK.

THIS DRAWING AND SPECIFICATIONS HEREIN ARE THE PROPERTY OF SCHNEIDER ELECTRIC AND SHALL NOT BE COPIED, REPRODUCED OR USED IN WHOLE OR IN PART, AS THE BASIS FOR THE MANUFACTURE OR SALE OF ITEMS WITHOUT WRITTEN PERMISSION FROM SCHNEIDER ELECTRIC. THIS DRAWING IS BASED UPON LATEST AVAILABLE INFORMATION AND IS SUBJECT TO CHANGE WITHOUT NOTICE.



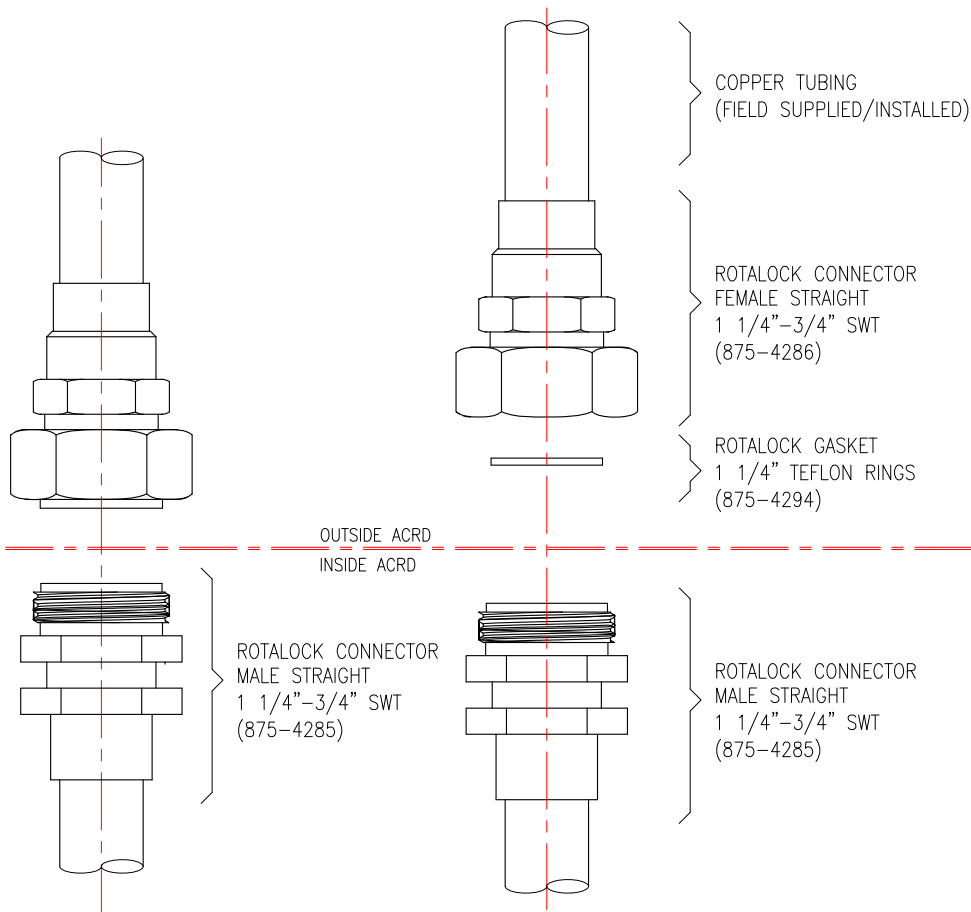
TITLE: InRow DIRECT EXPANSION
 InRow RD, 600mm, AIR COOLED
 ACRD600:200-240V 50/60Hz, ACRD601:460-480V 60Hz
 ACRD602 : 380-415V, 50/60Hz
 DRAIN LINE-CONDENSATE PUMP CONNECTIONS

DWG NO: ACRD600-601-602
 DRAWN: JAYAPRAKASH
 ENGINEER: XUXIANG ZHANG
 APPROVED: N SCHWEISSGUTH/H YANG

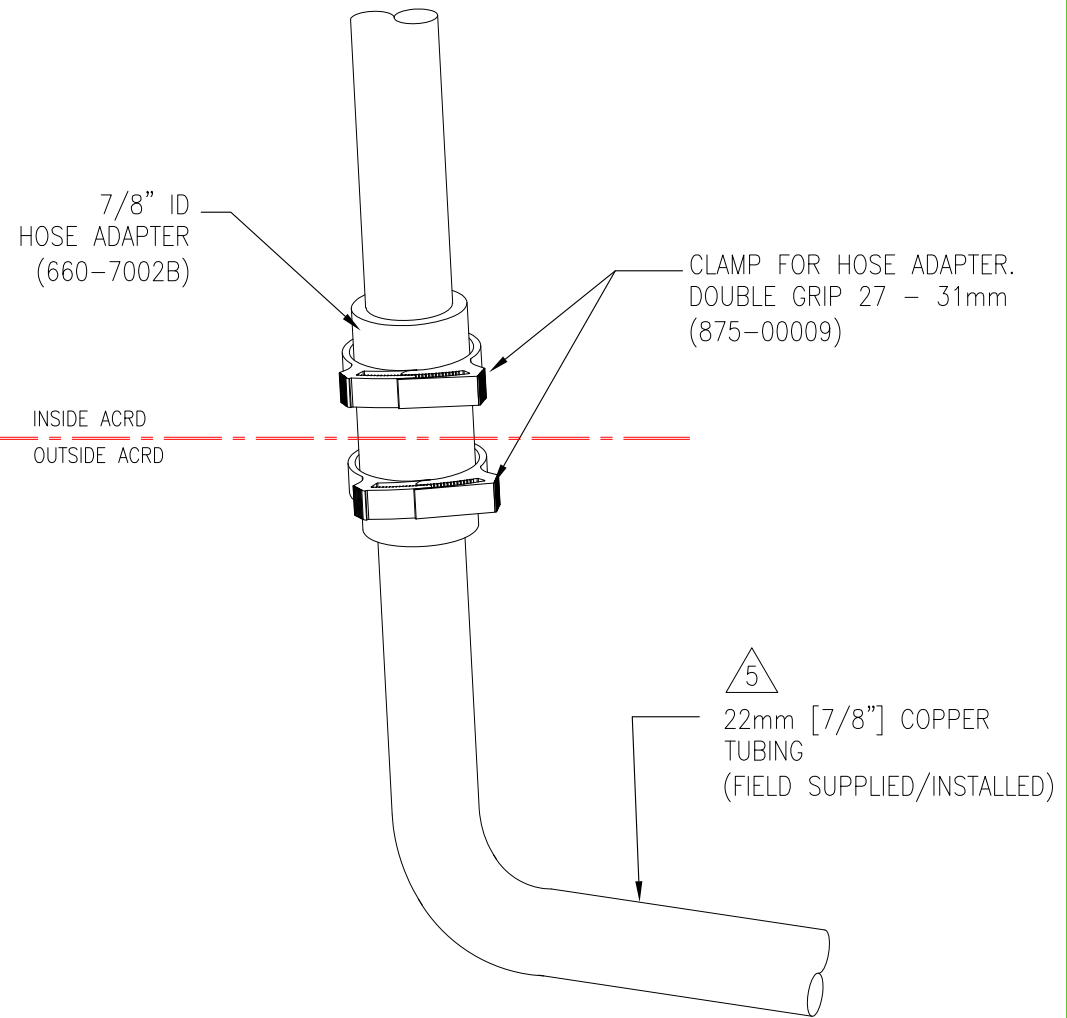
REV. 1
 21-MAR-17
 21-MAR-17
 21-MAR-17
 FIRST ANGLE PROJECTION

PROJECT: DRAWINGS SHEET 9 OF 11

SUPPLY AND RETURN CONNECTIONS (TOP AND BOTTOM PIPING)



CONDENSATE OVER FLOW LINE



- NOTES:
1. INSTALLATION SHALL COMPLY WITH ALL APPLICABLE NATIONAL, STATE AND LOCAL ELECTRICAL REGULATIONS.
 2. REFER TO PRODUCT DOCUMENTATION FOR ADDITIONAL DETAILS PRIOR TO INSTALLATION AND SITE PREPARATION WORK.
 3. RECOMMENDED TORQUE FOR 1 1/4" ROTALOCK IS 90 Nm [66.4 lbt.ft].
 4. RECOMMENDED BRAZING ALLOY IS AWS A5.8 BCuP-5.
 - △5. FIELD SUPPLIED/INSTALLED COPPER TUBING IS DESIGNATED TO BUILDING DWV SYSTEM OR DRAIN PAN.

THIS DRAWING AND SPECIFICATIONS HEREIN ARE THE PROPERTY OF SCHNEIDER ELECTRIC AND SHALL NOT BE COPIED, REPRODUCED OR USED IN WHOLE OR IN PART, AS THE BASIS FOR THE MANUFACTURE OR SALE OF ITEMS WITHOUT WRITTEN PERMISSION FROM SCHNEIDER ELECTRIC. THIS DRAWING IS BASED UPON LATEST AVAILABLE INFORMATION AND IS SUBJECT TO CHANGE WITHOUT NOTICE.



TITLE: InRow DIRECT EXPANSION
InRow RD, 600mm, AIR COOLED
ACRD600:200-240V 50/60Hz, ACRD601:460-480V 60Hz
ACRD602 : 380-415V, 50/60Hz
SUPPLY, RETURN & CONDENSATE LINE

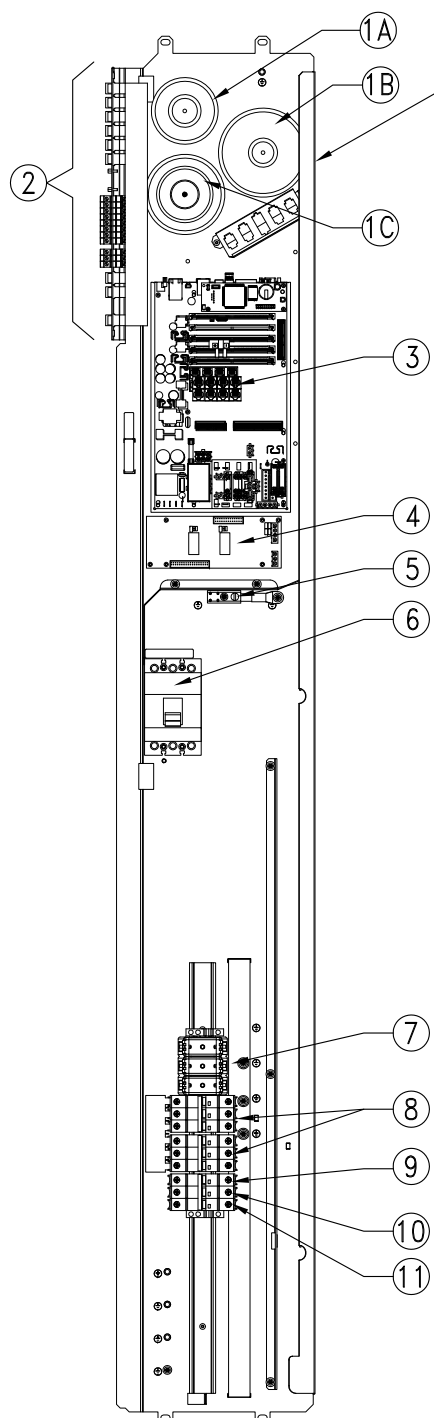
PROJECT: DRAWINGS SHEET 10 OF 11

DWG NO: ACRD600-601-602 REV. 1

DRAWN: JAYAPRAKASH 21-MAR-17
ENGINEER: XUXIANG ZHANG 21-MAR-17

APPROVED: N SCHWEISSGUTH/H YANG 21-MAR-17

FIRST ANGLE PROJECTION



FRONT VIEW
(ELECTRICAL PANEL)

ELECTRICAL PANEL

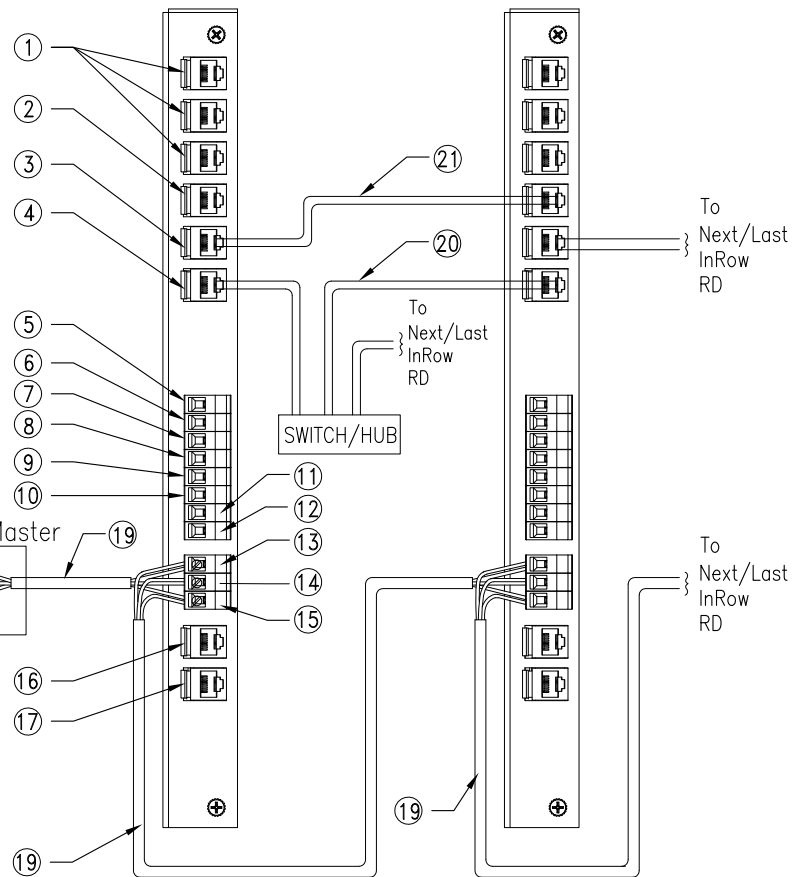
- 1C. TRANSFORMER FOR ACRD600
- 1B+1C TRANSFORMERS FOR ACRD601
- 1A+1B. TRANSFORMERS FOR ACRD602
- 2. USER INTERFACE CONNECTORS
- 3. MAIN CONTROLLER BOARD
- 4. RELAY BOARD
- 5. GROUND LUG
- 6. MAIN CIRCUIT BREAKER
- 7. COMPRESSOR FUSE BLOCK (ACRD600, ACRD601)
COMPRESSOR CIRCUIT BREAKER (ACRD602)
- 8. FAN CIRCUIT BREAKERS
- 9. FUSE NOT POPULATED
- 10. TRANSFORMER A FUSE
- 11. TRANSFORMER C/MB FUSE

USER INTERFACE CONNECTORS

- 1. Rack Inlet temperature sensors 1,2,3
- 2. A-Link in (with provided RJ-45 terminator)
- 3. A-Link OUT (with provided RJ-45 terminator)
- 4. Network port
- 5. Customer Output NC (Normally Closed)
- 6. Customer Output COM (Common)
- 7. Customer Output NO (Normally Open)
- 8. Supply GND
- 9. Supply 12 Vdc (current limit 20mA)
- 10. Supply 24 Vdc (current limit 20mA)
- 11. Customer Input + (12-30Vac/Vdc, 24Vdc@11mA)
- 12. Supply COM
- 13. Modbus D1 (RXTX+)
- 14. Modbus D0 (RXTX-)
- 15. Modbus GND
- 16. Supply air temperature sensor(front)
- 17. Supply air humidity sensor(front)
- 18. Terminator resistor (provided)
- 19. Modbus cable (RS-485)
- 20. LAN cable (10/100 Base-T)
- 21. CAT-5 ethernet cable

First InRow RD

Second InRow RD



FRONT VIEW
(USER INTERFACE CONNECTORS)

(INTERCONNECTING WIRING IS SUPPLIED AND FIELD INSTALLED BY OTHERS)

NOTES:

- 1. INSTALLATION SHALL COMPLY WITH ALL APPLICABLE NATIONAL, STATE AND LOCAL ELECTRICAL REGULATIONS.
- 2. REFER TO PRODUCT DOCUMENTATION FOR ADDITIONAL DETAILS PRIOR TO INSTALLATION AND SITE PREPARATION WORK.

THIS DRAWING AND SPECIFICATIONS HEREIN ARE THE PROPERTY OF SCHNEIDER ELECTRIC AND SHALL NOT BE COPIED, REPRODUCED OR USED IN WHOLE OR IN PART, AS THE BASIS FOR THE MANUFACTURE OR SALE OF ITEMS WITHOUT WRITTEN PERMISSION FROM SCHNEIDER ELECTRIC. THIS DRAWING IS BASED UPON LATEST AVAILABLE INFORMATION AND IS SUBJECT TO CHANGE WITHOUT NOTICE.



TITLE: InRow DIRECT EXPANSION
InRow RD, 600mm, AIR COOLED
ACRD600:200-240V 50/60Hz, ACRD601:460-480V 60Hz
ACRD602 : 380-415V, 50/60Hz
ELECTRICAL PANEL AND USER INTERFACE

DWG NO: ACRD600-601-602

REV. 1

DRAWN: JAYAPRAKASH 21-MAR-17
ENGINEER: XUXIANG ZHANG 21-MAR-17

ANGLE PROJECTION

PROJECT: DRAWINGS SHEET 11 OF 11

APPROVED: N SCHWEISSGUTH/H YANG 21-MAR-17

