

DEVICE ID	NOMINAL CURRENT	TYPE	MAKE	MODEL	ACCESSORIES
Q1	315AF	AC SWITCH, 3POLE	ABB	OT315E03	1 AUX. SWITCH (NO)
Q2	250AF	AC SWITCH, 4POLE	ABB	OT250E04	1 AUX. SWITCH (NO)
Q3	250AF	AC SWITCH, 4POLE	ABB	OT250E04	1 AUX. SWITCH (NC)
Q5	250AF/ 250AT	AC BREAKER, 3POLE	ABB	1SDA051327R1	1 AUX. SW, OPEN/CLOSE RELEASE TRIP
SUB FEED BREAKERS	160AF/ 160AT	AC BREAKER, 4POLE	ABB	1SDA050938R1	1AUX. SW. (NO), 1 FORM C +AB
DC BREAKER	320AF	DC BREAKER, 3POLE	ABB	1SDA054436R1	1-SHUNT TRIP (120-240V AC), 1-AUX. SWITCH

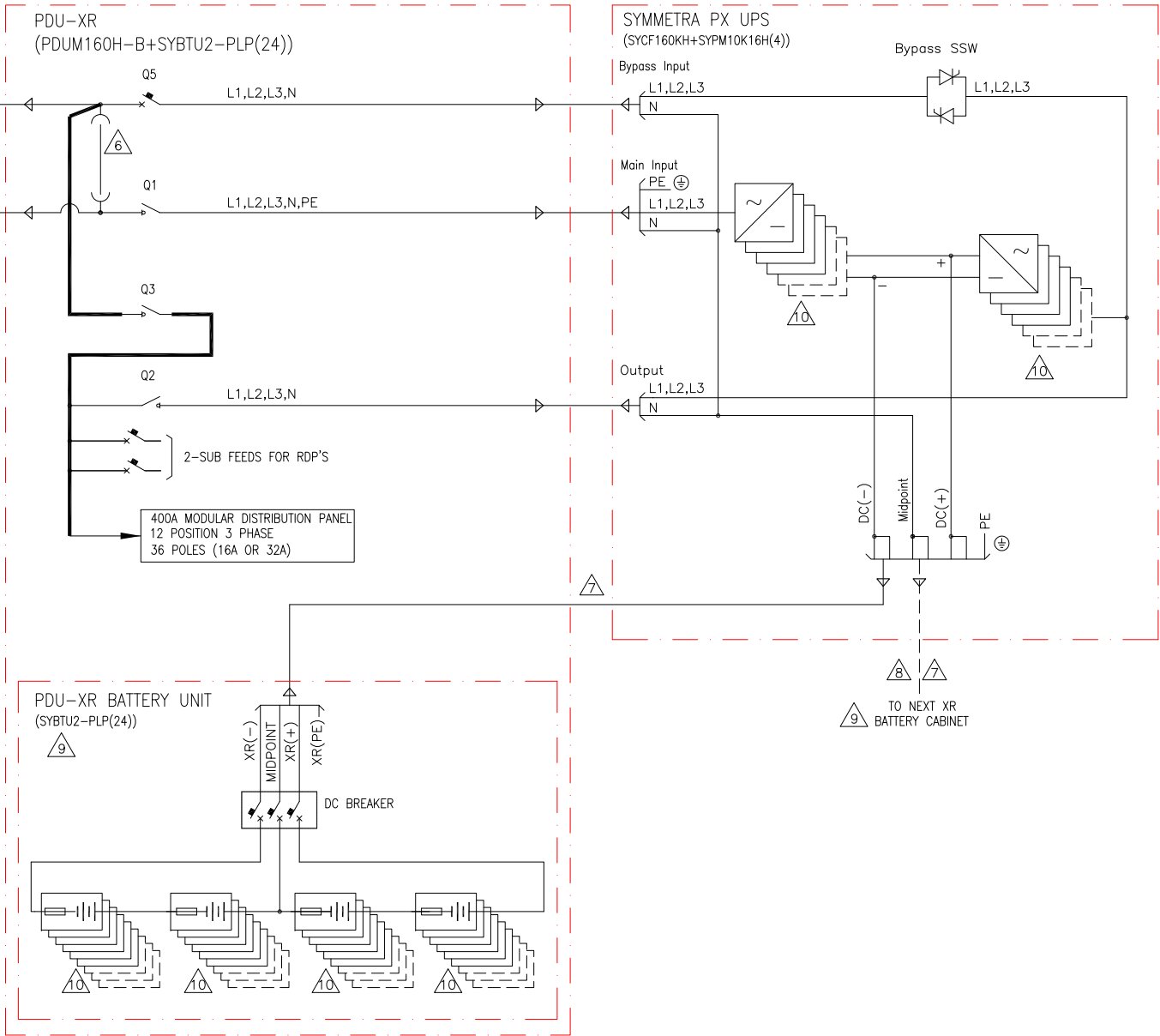
DEVICE	NOMINAL CURRENT	RATED SHORT CIRCUIT CURRENT	
		WITH INPUT FUSES	WITHOUT INPUT FUSES
UPS AC IN	97A	30ka SYMMETRICAL	10ka SYMMETRICAL
UPS AC OUT	92A	30ka SYMMETRICAL	10ka SYMMETRICAL
UPS DC	176A		
PDU-XR		30ka SYMMETRICAL	10ka SYMMETRICAL
BATTERY CABINET XR1	176A	25ka SYMMETRICAL	25ka SYMMETRICAL

#### LEGEND:

- AC CABLE - PROVIDED BY OTHERS.
- DC CABLE - PROVIDED BY OTHERS.
- AC BUS

#### NOTES:

- INSTALLATION SHALL COMPLY WITH ALL APPLICABLE LOCAL AND NATIONAL CODES.
- PLEASE REFER TO PRODUCT DOCUMENTATION FOR ADDITIONAL DETAILS PRIOR TO INSTALLATION AND SITE PREPARATION WORK.
- DRAWING DEPICTS POWER SYSTEM CONNECTIONS AND IS NOT REPRESENTATIVE OF PHYSICAL LAYOUT, PLEASE REFER TO MECHANICAL DRAWINGS FOR PHYSICAL LAYOUT.
- 3x400/230V TN-S (PROVIDED BY OTHERS). FOR OTHER EARTHING PRINCIPLES, PLEASE CONTACT SCHNEIDER ELECTRIC. RECOMMENDED UPSTREAM PROTECTION IS A MINIMUM RATING TO SUPPORT MAXIMUM CURRENT, WITHOUT SELECTIVITY. IF SELECTIVITY IS REQUIRED, PLEASE CONTACT SCHNEIDER ELECTRIC.
- ALL AC POWER CABLING IS L1,L2, L3, N, PE.
- SINGLE MAINS CONFIGURATION IS A DEFAULT. DO NOT REMOVE THE STRAP BUS BARS AND NEUTRAL CABLE FOR SINGLE MAINS CONFIGURATION. FOR SINGLE MAINS CONFIGURATION CONNECT INPUT CABLES TO EITHER MAINS OR BYPASS TERMINALS. FOR DUAL MAINS CONFIGURATION REMOVE THE 3 STRAP BUS BARS AND ONE NEUTRAL CABLE.
- DC CABLING TO BE 600V RATED, 2 WIRE + GROUND, EACH CIRCUIT TO BE RUN IN SEPARATE CONDUITS, POSITIVE, NEGATIVE + GROUND.
- CABLING PROVIDED BY OTHERS IF UPS AND BATTERY CABINETS ARE INSTALLED REMOTELY, FOR LINE-UP SOLUTION CABLING PROVIDED BY SCHNEIDER ELECTRIC.
- NUMBER OF BATTERIES AND DC NOMINAL CURRENT SHOWN IN THIS DIAGRAM PROVIDES 5 MINUTES RUN TIME. MAXIMUM 4 BATTERY ENCLOSURES MAY BE USED WITH THE SYSTEM. THIS NUMBER INCLUDES PDU-XR.
- BLOCKS SHOWN WITH DASHED (----) LINES REPRESENT AVAILABLE SPACE/SLOTS FOR ADDITIONAL POWER MODULES AND BATTERY UNITS.



THIS DRAWING AND SPECIFICATIONS HEREIN ARE THE PROPERTY OF SCHNEIDER ELECTRIC AND SHALL NOT BE COPIED, REPRODUCED OR USED IN WHOLE OR IN PART, AS THE BASIS FOR THE MANUFACTURE OR SALE OF ITEMS WITHOUT WRITTEN PERMISSION FROM SCHNEIDER ELECTRIC. THIS DRAWING IS BASED UPON LATEST AVAILABLE INFORMATION AND IS SUBJECT TO CHANGE WITHOUT NOTICE.

**Schneider Electric**

TITLE: SYMMETRA PX  
Input: 400/230V AC 3PH SINGLE/DUAL MAINS  
Output: 400/230V AC AND 400V AC 3PH 64kW  
WITH MODULAR DISTRIBUTION  
SYSTEM ONE LINE DIAGRAM

DWG NO: SY64K96H-PD-SD

DRAWN: JAYAPRAKASH

ENGINEER: S.ANDERSEN

APPROVED: S.ANDERSEN

REV. 0

ANGLE PROJECTION: N/A

PROJECT: SUBMITTAL DRAWINGS SHEET 1 OF 1

28-JAN-16  
25-FEB-16  
25-FEB-16