

**NOTES:**

1. INSTALLATION SHALL COMPLY WITH ALL APPLICABLE NATIONAL, STATE AND LOCAL CODES.
2. REFER TO PRODUCT DOCUMENTATION FOR ADDITIONAL DETAILS PRIOR TO INSTALLATION AND SITE PREPARATION WORK.
- △3. IN AREAS WHERE SEISMIC PROTECTION IS REQUIRED, FOLLOW THE INSTRUCTIONS IN GVM65KANCHORING-SA DRAWING.
- △4. FOR INSTALLATION ON RAISED FLOOR, FOLLOW THE INSTRUCTIONS IN GVM65KANCHORING-RF DRAWING

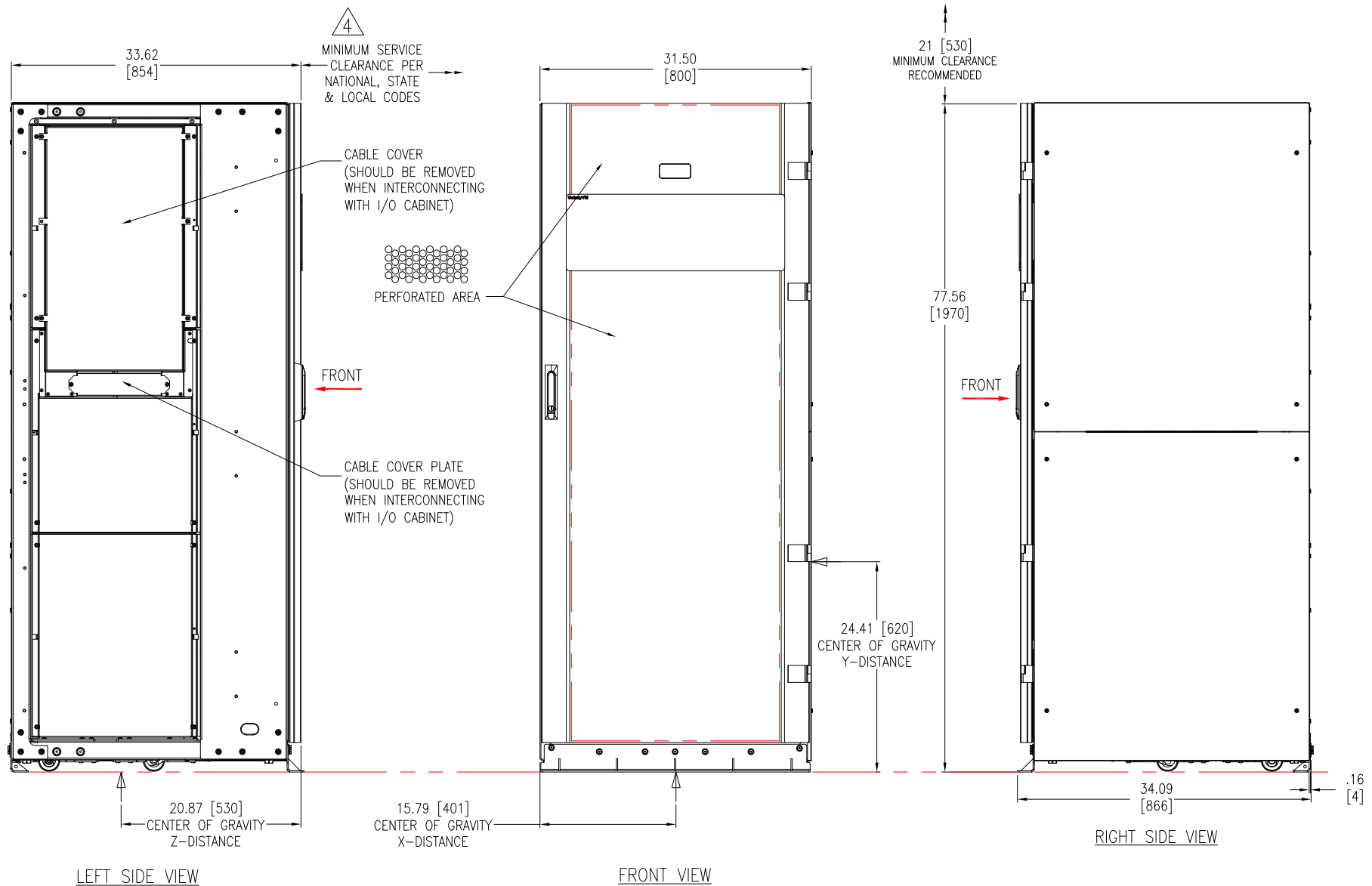
THIS DRAWING AND SPECIFICATIONS HEREIN ARE THE PROPERTY OF SCHNEIDER ELECTRIC AND SHALL NOT BE COPIED, REPRODUCED OR USED IN WHOLE OR IN PART, AS THE BASIS FOR THE MANUFACTURE OR SALE OF ITEMS WITHOUT WRITTEN PERMISSION FROM SCHNEIDER ELECTRIC. THIS DRAWING IS BASED UPON LATEST AVAILABLE INFORMATION AND IS SUBJECT TO CHANGE WITHOUT NOTICE.



**TITLE:** Galaxy VM  
TRANSFORMER CABINET 130 - 225K  
Input: 480V, 3PH  
Output: 208V, 3PH  
ISOMETRIC VIEWS

**PROJECT:** SUBMITTAL DRAWINGS **SHEET 1 OF 6**

<b>DWG NO:</b>	GVMTF225KGF		<b>REV.</b>	0
<b>DRAWN BY:</b>	JAYAPRAKASH	09-JUN-15	THIRD	
<b>ENGINEER:</b>	ANDERSEN/Z WILLIAM/Y DU	19-JUN-15	ANGLE	
<b>APPROVED BY:</b>	M PAULSEN	19-JUN-15	PROJECTION	



**NOTES:**

1. INSTALLATION SHALL COMPLY WITH ALL APPLICABLE NATIONAL, STATE AND LOCAL CODES.
2. REFER TO PRODUCT DOCUMENTATION FOR ADDITIONAL DETAILS PRIOR TO INSTALLATION AND SITE PREPARATION WORK.
3. ALL DIMENSIONS ARE IN INCHES [MILLIMETERS].
- △ 4. FRONT ACCESS REQUIRED FOR SERVICE.
5. ALL DIMENSIONS EXCLUDES SCREW PROJECTIONS OUTSIDE THE ENCLOSURE.
6. CABLE ENTRY IS FROM TOP OR BOTTOM OF THE UNIT.
7. THE WEIGHT OF THE UNIT IS 1200kg [2640 lb].
8. OPERATING TEMPERATURE: 32°F TO 104°F [0°C TO 40°C].
9. PROTECTION CLASS: IP20.
10. COLOR: RAL 9003 WHITE.
- △ 11. THIS INFORMATION PROVIDES APPROXIMATE CENTER OF GRAVITY CALCULATION.
12. DOOR SWING: FREELY ROTATES BY 180°

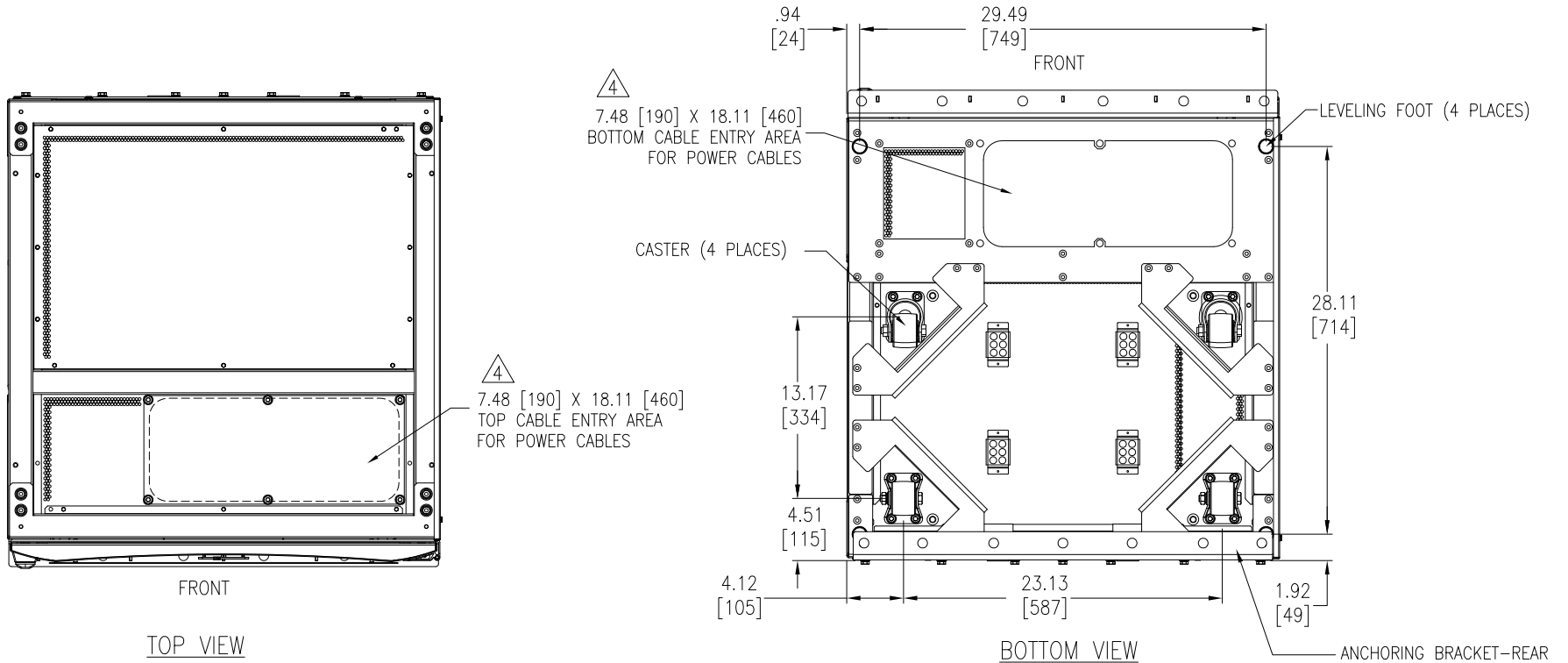
THIS DRAWING AND SPECIFICATIONS HEREIN ARE THE PROPERTY OF SCHNEIDER ELECTRIC AND SHALL NOT BE COPIED, REPRODUCED OR USED IN WHOLE OR IN PART, AS THE BASIS FOR THE MANUFACTURE OR SALE OF ITEMS WITHOUT WRITTEN PERMISSION FROM SCHNEIDER ELECTRIC. THIS DRAWING IS BASED UPON LATEST AVAILABLE INFORMATION AND IS SUBJECT TO CHANGE WITHOUT NOTICE.



TITLE: Galaxy VM  
TRANSFORMER CABINET 130 - 225K  
Input: 480V, 3PH  
Output: 208V, 3PH  
GENERAL ARRANGEMENT

PROJECT: SUBMITTAL DRAWINGS SHEET 2 OF 6

DWG NO:	GVMTF225KGF	REV.	0
DRAWN BY:	JAYAPRAKASH	09-JUN-15	THIRD
ENGINEER:	C ANDERSEN/Z WILLIAM/Y DU	19-JUN-15	ANGLE
APPROVED BY:	M PAULSEN	19-JUN-15	PROJECTION



**NOTES:**

1. INSTALLATION SHALL COMPLY WITH ALL APPLICABLE NATIONAL, STATE AND LOCAL CODES.
2. REFER TO PRODUCT DOCUMENTATION FOR ADDITIONAL DETAILS PRIOR TO INSTALLATION AND SITE PREPARATION WORK.
3. ALL DIMENSIONS ARE IN INCHES [MILLIMETERS].
- △ 4. DRILL/PUNCH HOLES IN PLATE. REMOVE PLATE FROM CABINET BEFORE DRILLING/PUNCHING.

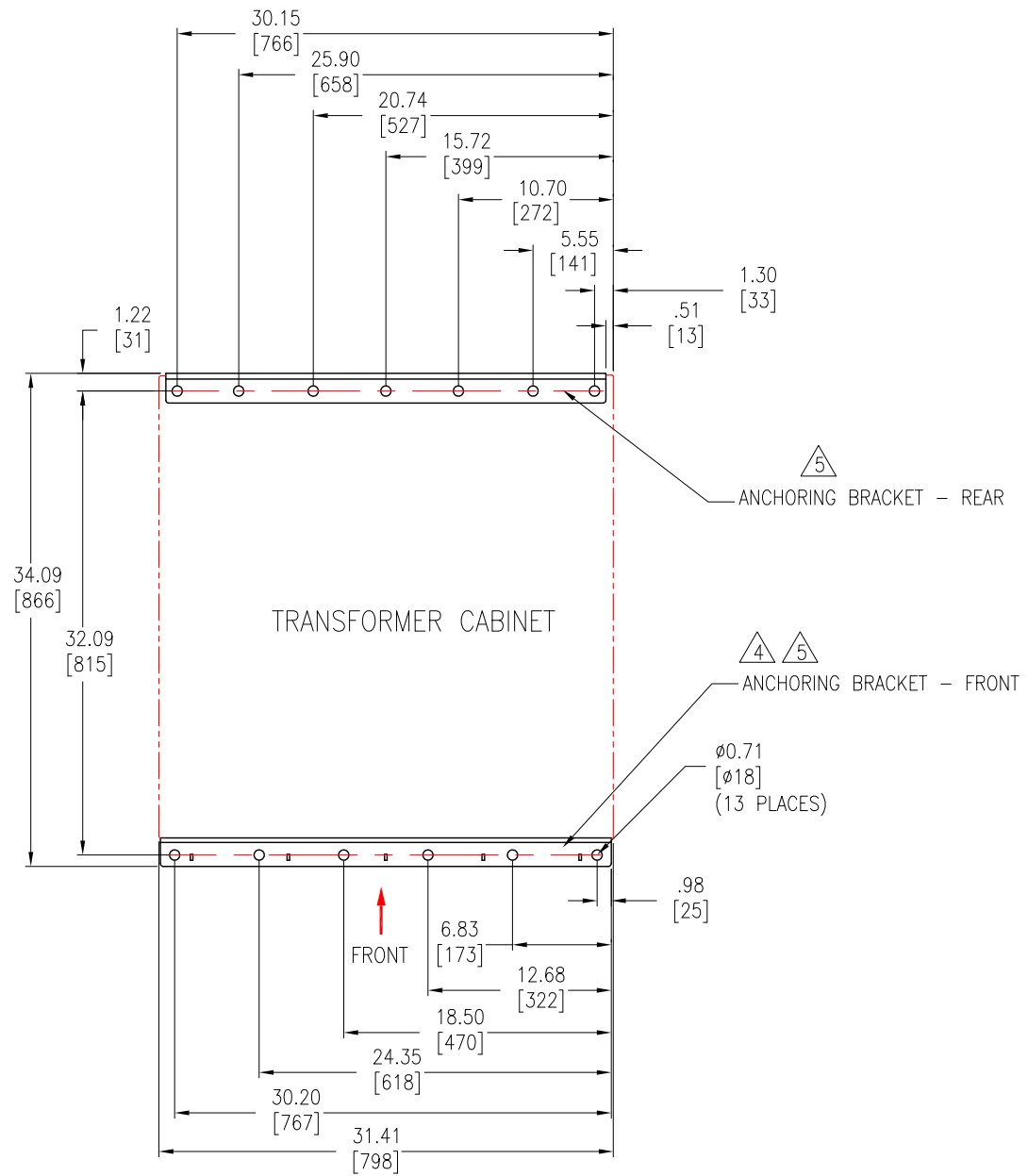
THIS DRAWING AND SPECIFICATIONS HEREIN ARE THE PROPERTY OF SCHNEIDER ELECTRIC AND SHALL NOT BE COPIED, REPRODUCED OR USED IN WHOLE OR IN PART, AS THE BASIS FOR THE MANUFACTURE OR SALE OF ITEMS WITHOUT WRITTEN PERMISSION FROM SCHNEIDER ELECTRIC. THIS DRAWING IS BASED UPON LATEST AVAILABLE INFORMATION AND IS SUBJECT TO CHANGE WITHOUT NOTICE.



**TITLE:** Galaxy VM  
TRANSFORMER CABINET 130 - 225K  
Input: 480V, 3PH  
Output: 208V, 3PH  
TOP AND BOTTOM VIEWS

**PROJECT:** SUBMITTAL DRAWINGS **SHEET 3 OF 6**

<b>DWG NO:</b> GVMTF225KGF	<b>REV.</b> 0
<b>DRAWN BY:</b> JAYAPRAKASH	09-JUN-15
<b>ENGINEER:</b> C ANDERSEN/Z WILLIAM/Y DU	19-JUN-15
<b>APPROVED BY:</b> M PAULSEN	19-JUN-15
	THIRD ANGLE PROJECTION



TOP VIEW  
MOUNTING HOLE LOCATIONS  
FOR ANCHORING BRACKETS

**NOTES:**

1. INSTALLATION SHALL COMPLY WITH ALL APPLICABLE NATIONAL, STATE AND LOCAL CODES.
2. REFER TO PRODUCT DOCUMENTATION FOR ADDITIONAL DETAILS PRIOR TO INSTALLATION AND SITE PREPARATION WORK.
3. ALL DIMENSIONS ARE IN INCHES [MILLIMETERS].
- △4. FIXATION OF ANCHORING BRACKETS IN FRONT IS OPTIONAL IN NON-SEISMIC LOCATIONS.
- △5. IN AREAS WHERE SEISMIC PROTECTION IS REQUIRED, FOLLOW THE INSTRUCTIONS IN GVMANCHORING-SA DRAWING. FLOOR ANCHORING BOLTS ARE NOT SUPPLIED.
6. FOR INSTALLATION ON RAISED FLOOR, FOLLOW THE INSTRUCTIONS IN GVMANCHORING-RF DRAWING.
7. REAR ANCHORING BRACKET MUST BE BOLTED TO THE FLOOR.

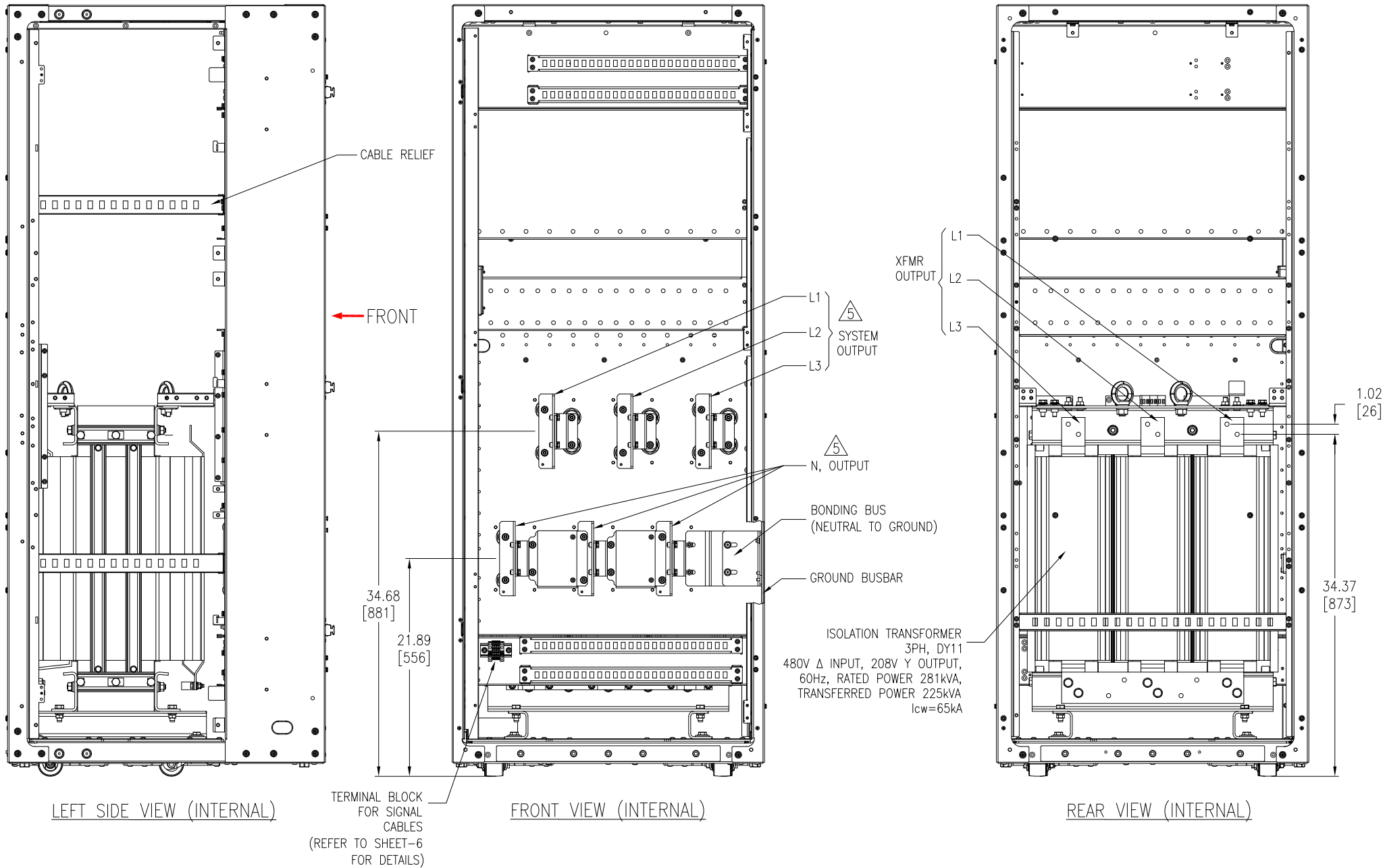
THIS DRAWING AND SPECIFICATIONS HEREIN ARE THE PROPERTY OF SCHNEIDER ELECTRIC AND SHALL NOT BE COPIED, REPRODUCED OR USED IN WHOLE OR IN PART, AS THE BASIS FOR THE MANUFACTURE OR SALE OF ITEMS WITHOUT WRITTEN PERMISSION FROM SCHNEIDER ELECTRIC. THIS DRAWING IS BASED UPON LATEST AVAILABLE INFORMATION AND IS SUBJECT TO CHANGE WITHOUT NOTICE.



**TITLE:** Galaxy VM  
TRANSFORMER CABINET 130 - 225K  
Input: 480V, 3PH  
Output: 208V, 3PH  
ANCHORING DETAILS

PROJECT: SUBMITTAL DRAWINGS SHEET 4 OF 6

<b>DWG NO:</b> GVMTF225KGF	<b>REV.</b> 0
<b>DRAWN BY:</b> JAYAPRAKASH	09-JUN-15
<b>ENGINEER:</b> C ANDERSEN/Z WILLIAM/Y DU	19-JUN-15
<b>APPROVED BY:</b> M PAULSEN	19-JUN-15
	THIRD ANGLE PROJECTION



NOTES:

1. INSTALLATION SHALL COMPLY WITH ALL APPLICABLE NATIONAL, STATE AND LOCAL CODES.
2. REFER TO PRODUCT DOCUMENTATION FOR ADDITIONAL DETAILS PRIOR TO INSTALLATION AND SITE PREPARATION WORK.
3. ALL DIMENSIONS ARE IN INCHES [MILLIMETERS].
4. SOME STRUCTURAL DETAILS HAVE BEEN OMITTED FOR THE PURPOSE OF CLARITY.
5. FOR BUSBAR DETAILS REFER TO SHEET-6.
6. TRANSFORMER CABINET SHOULD ONLY BE BAYED TO THE RIGHT SIDE OF THE I/O CABINET.

THIS DRAWING AND SPECIFICATIONS HEREIN ARE THE PROPERTY OF SCHNEIDER ELECTRIC AND SHALL NOT BE COPIED, REPRODUCED OR USED IN WHOLE OR IN PART, AS THE BASIS FOR THE MANUFACTURE OR SALE OF ITEMS WITHOUT WRITTEN PERMISSION FROM SCHNEIDER ELECTRIC. THIS DRAWING IS BASED UPON LATEST AVAILABLE INFORMATION AND IS SUBJECT TO CHANGE WITHOUT NOTICE.



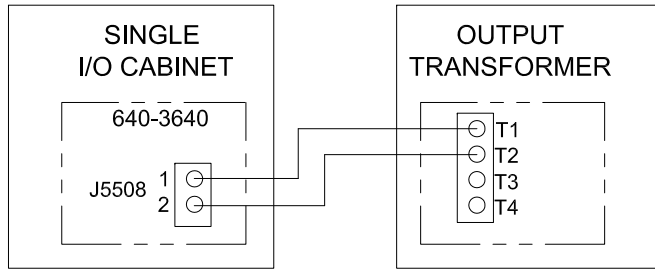
TITLE: Galaxy VM  
TRANSFORMER CABINET 130 - 225K  
Input: 480V, 3PH  
Output: 208V, 3PH  
INTERNAL VIEWS

DWG NO: GVMTF225KGF	REV. 1
DRAWN BY: JAYAPRAKASH/BALA	10-AUT-15
ENGINEER: C ANDERSEN/Z WILLIAM/Y DU	10-AUG-15
APPROVED BY: M PAULSEN	10-AUG-15

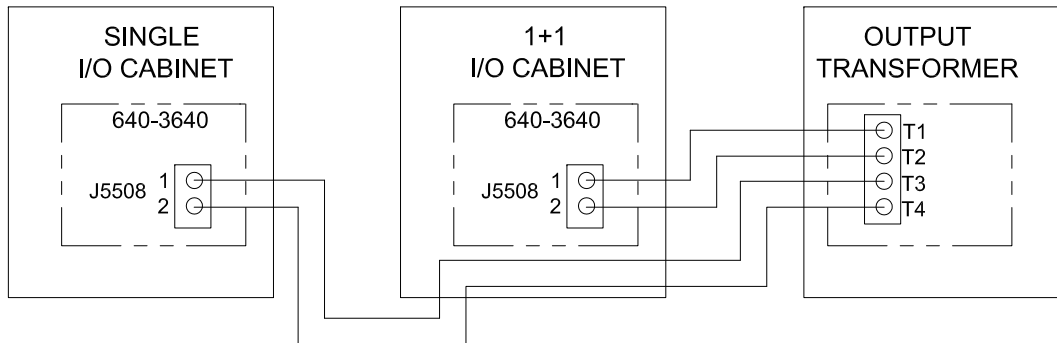
PROJECT: SUBMITTAL DRAWINGS SHEET 5 OF 6

THIRD ANGLE PROJECTION

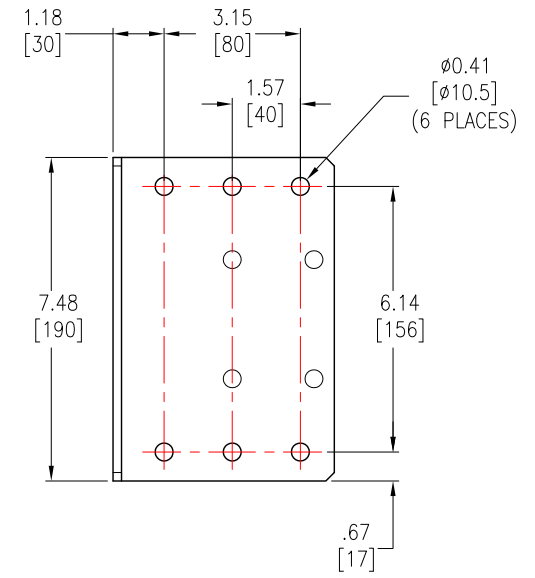
## INTERFACE DETAILS BETWEEN I/O CABINET AND OUTPUT TRANSFORMER FOR SINGLE SYSTEM



## INTERFACE DETAILS BETWEEN I/O CABINETS AND OUTPUT TRANSFORMER FOR 1+1 REDUNDANT SYSTEM



## BUSBAR DETAILS



OUTPUT/NEUTRAL CONNECTION BUSBAR/  
5 [0.20] Thick

**NOTES:**

1. INSTALLATION SHALL COMPLY WITH ALL APPLICABLE NATIONAL, STATE AND LOCAL CODES.
2. REFER TO PRODUCT DOCUMENTATION FOR ADDITIONAL DETAILS PRIOR TO INSTALLATION AND SITE PREPARATION WORK.
3. ALL DIMENSIONS ARE IN INCHES [MILLIMETERS].

THIS DRAWING AND SPECIFICATIONS HEREIN ARE THE PROPERTY OF SCHNEIDER ELECTRIC AND SHALL NOT BE COPIED, REPRODUCED OR USED IN WHOLE OR IN PART, AS THE BASIS FOR THE MANUFACTURE OR SALE OF ITEMS WITHOUT WRITTEN PERMISSION FROM SCHNEIDER ELECTRIC. THIS DRAWING IS BASED UPON LATEST AVAILABLE INFORMATION AND IS SUBJECT TO CHANGE WITHOUT NOTICE.

**Schneider Electric**

**TITLE:** Galaxy VM  
TRANSFORMER CABINET 130 - 225K  
Input: 480V, 3PH  
Output: 208V, 3PH  
INTERFACE AND BUSBAR DETAILS

**DWG NO:** GVMTF225KGF  
**ENGINEER:** C ANDERSEN/Z WILLIAM/Y DU

**REV.** 0  
THIRD ANGLE  
PROJECTION

**PROJECT:** SUBMITTAL DRAWINGS **SHEET** 6 OF 6

**APPROVED BY:** M PAULSEN 19-JUN-15