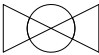

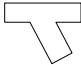
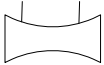


InRow RC,300mm,Chilled Water Air Conditioners Drawing Guide

Sheet No.	Component /Detail	Description
1	Draw ing Guide	InRow RC, 300mm, Chilled Water Air Conditioners, Draw ing Guide
2	Isometric View (External)	InRow RC, 300mm, Chilled Water, Isometric View (External)
3	General arrangement	InRow RC, 300mm, Chilled Water, Main Mechanical
4	Top and Bottom View s	InRow RC, 300mm, Chilled Water, Top and Bottom View s
5	Anchoring Details	InRow RC, 300mm, Chilled Water, Anchoring Details
6	Isometric View (Internal)	InRow RC, 300mm, Chilled Water, Isometric View (Internal)
7	Internal View s	InRow RC, 300mm, Chilled Water, Internal View s
8	Top & Bottom Piping Details	InRow RC, 300mm, Chilled Water, Internal Connections
9	Piping Diagram	InRow RC, 300mm, Chilled Water, Piping Diagram
10	Internal Piping	InRow RC, 300mm, Chilled Water, Internal Piping
11	Pow er Cord Connection	InRow RC, 300mm, Chilled Water, Electrical Data
12	Control Connections	InRow RC, 300mm, Chilled Water, Control User Interface
13	Interface Connections	InRow RC, 300mm, Chilled Water, Control User Interface

LEGEND			
SYMBOL	DESCRIPTION	SYMBOL	DESCRIPTION
	SHUT OFF VALVE		FLOW METER
	Y-STRAINER		
	CURRENT SETTER		

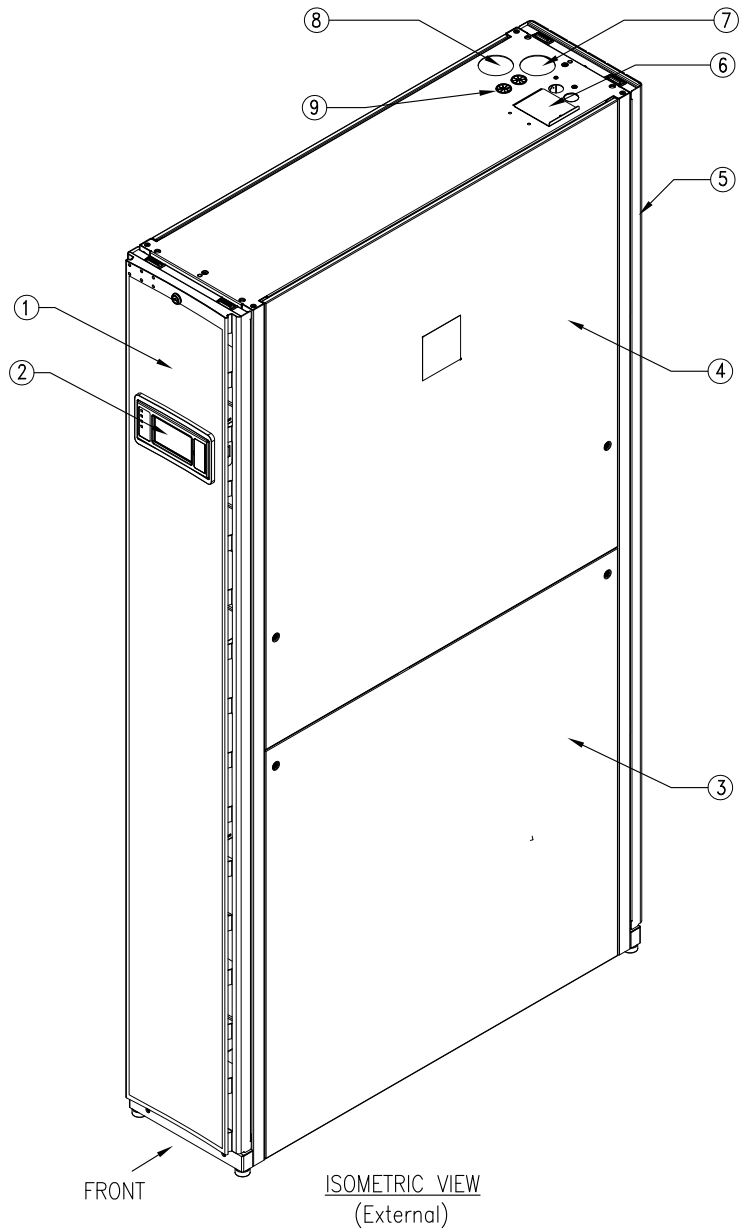
THIS DRAWING AND SPECIFICATIONS HEREIN ARE THE PROPERTY OF SCHNEIDER ELECTRIC AND SHALL NOT BE COPIED, REPRODUCED OR USED IN WHOLE OR IN PART, AS THE BASIS FOR THE MANUFACTURE OR SALE OF ITEMS WITHOUT WRITTEN PERMISSION FROM SCHNEIDER ELECTRIC. THIS DRAWING IS BASED UPON LATEST AVAILABLE INFORMATION AND IS SUBJECT TO CHANGE WITHOUT NOTICE.



TITLE:
InRow Chilled Water Air Conditioners
InRow RC, 300mm, Chilled Water
208-230V, 50/60Hz, HARDWIRED
DRAWING GUIDE

PROJECT: DRAWINGS SHEET 1 OF 13

DWG NO:	ACRC301H	REV.	0
DRAWN:	JAYAPRAKASH	26-FEB-14	FIRST ANGLE PROJECTION
ENGINEER:	FAN GAO	10-MAR-14	
APPROVED:	C CUMMISKEY/N SCHWEISSUTH	10-MAR-14	



- ① Perforated Front Panel
- ② Display Interface
- ③ Lower Side Panel
- ④ Upper Side Panel
- ⑤ Perforated Rear Panel
- ⑥ Power Cord connections, Top
- ⑦ Top Return (Outlet)
- ⑧ Top Supply (Inlet)
- ⑨ Low voltage input wiring

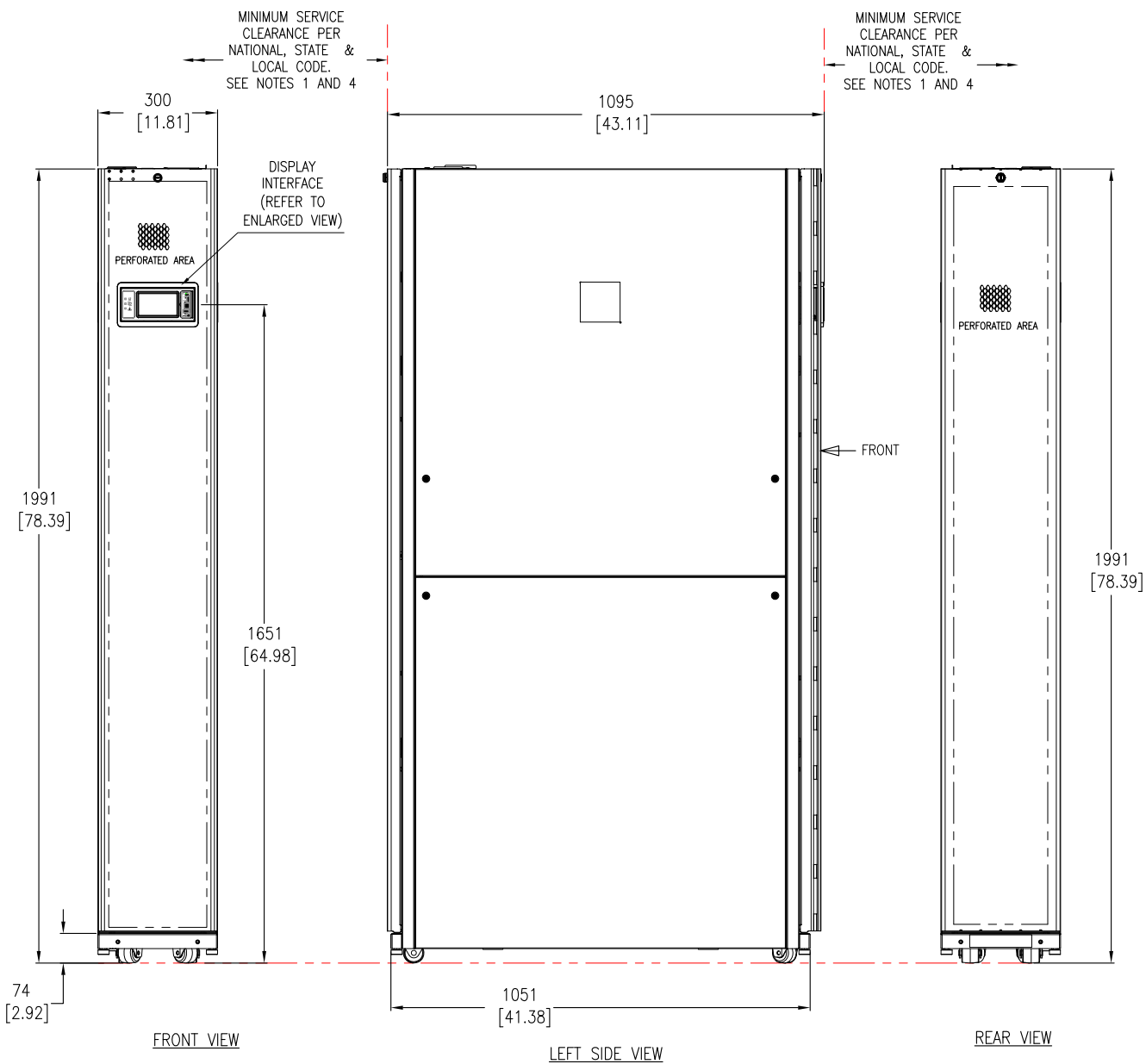
NOTES:
 1. INSTALLATION SHALL COMPLY WITH ALL APPLICABLE NATIONAL, STATE AND LOCAL ELECTRICAL REGULATIONS.
 2. REFER TO PRODUCT DOCUMENTATION FOR ADDITIONAL DETAILS PRIOR TO INSTALLATION AND SITE PREPARATION WORK.

THIS DRAWING AND SPECIFICATIONS HEREIN ARE THE PROPERTY OF SCHNEIDER ELECTRIC AND SHALL NOT BE COPIED, REPRODUCED OR USED IN WHOLE OR IN PART, AS THE BASIS FOR THE MANUFACTURE OR SALE OF ITEMS WITHOUT WRITTEN PERMISSION FROM SCHNEIDER ELECTRIC. THIS DRAWING IS BASED UPON LATEST AVAILABLE INFORMATION AND IS SUBJECT TO CHANGE WITHOUT NOTICE.

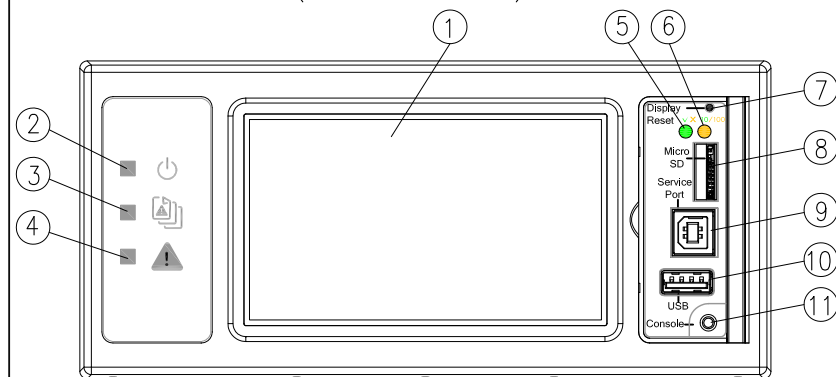


TITLE:
 InRow Chilled Water Air Conditioners
 InRow RC, 300mm, Chilled Water
 208-230V, 50/60Hz, HARDWIRED
 ISOMETRIC VIEW (EXTERNAL)

DWG NO:	ACRC301H	REV:	0
DRAWN:	JAYAPRAKASH	DATE:	26-FEB-14
ENGINEER:	FAN GAO	DATE:	10-MAR-14
APPROVED:	C CUMMISKEY/N SCHWEISSUTH	DATE:	10-MAR-14



DISPLAY INTERFACE (ENLARGED VIEW)

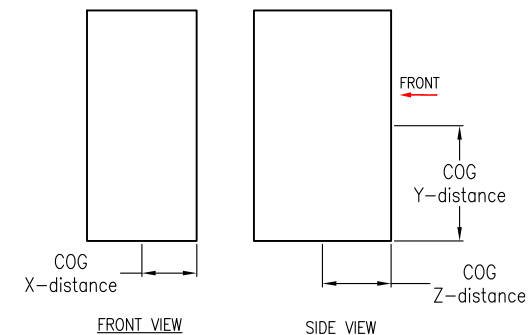


ITEM	DESCRIPTION	FUNCTION
1	LCD Display	4.3 Inch Touch Screen Color Display.
2	Power LED	The Unit is powered when the LED is illuminated. Unit is firmware is updating when LED is blinking
3	Check Log LED	When this LED is illuminated, a new entry has been made to the event log.
4	Alarm LED	Displays current alarm condition of unit.
5	Status LED	Displays current network management card status.
6	Link-RX/TX (10/100) LED	Displays current NETWORK link status.
7	Display Reset button	Resets the Display microprocessor. This has no effect on the air conditioner controller.
8	Micro SD card slot	Memory card expansion slot.
9	Service port	USB-B port used only by service personnel.
10	USB-A port	Supports firmware upgrades.
11	Serial configuration	Connects the display to a local computer to configure initial network settings or access the command line interface (CLI).

NOTES:

- INSTALLATION SHALL COMPLY WITH ALL APPLICABLE NATIONAL, STATE AND LOCAL ELECTRICAL REGULATIONS.
- REFER TO PRODUCT DOCUMENTATION FOR ADDITIONAL DETAILS PRIOR TO INSTALLATION AND SITE PREPARATION WORK.
- ALL DIMENSIONS ARE IN MILLIMETERS [INCHES].
- A MINIMUM CLEARANCE OF 1200mm [48 Inches] IN FRONT AND 914mm [36 Inches] IN REAR OF THE UNIT IS REQUIRED FOR SERVICE.
- TOP OR BOTTOM PIPING CONFIGURATIONS.
- NET WEIGHT OF UNIT IS 210 kg [463 lb]. OPERATING WEIGHT (INCLUDES WEIGHT OF WATER) IS 220 kg [485 lb]. VOLUME OF FLUID IN UNIT IS 10 LITERS [2.64 gal], EXCLUDES PIPING BEYOND INTERNAL UNIONS.
- FLOOR LOADING: 670 kg/meter² [137 lb/ft²].
- THIS INFORMATION PROVIDES APPROXIMATE CENTER OF GRAVITY CALCULATION.

COG DETAILS



Center of Gravity in mm [Inches]		
X-Distance	Y-Distance	Z-Distance
140 [5.52]	1000 [39.37]	530 [20.87]

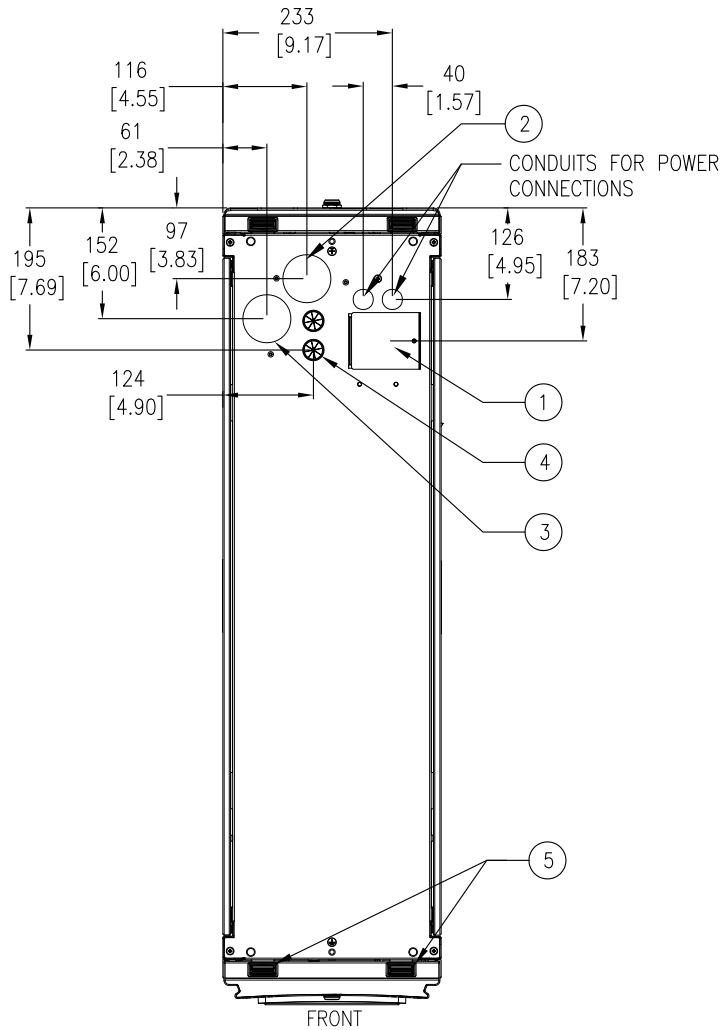
THIS DRAWING AND SPECIFICATIONS HEREIN ARE THE PROPERTY OF SCHNEIDER ELECTRIC AND SHALL NOT BE COPIED, REPRODUCED OR USED IN WHOLE OR IN PART, AS THE BASIS FOR THE MANUFACTURE OR SALE OF ITEMS WITHOUT WRITTEN PERMISSION FROM SCHNEIDER ELECTRIC. THIS DRAWING IS BASED UPON LATEST AVAILABLE INFORMATION AND IS SUBJECT TO CHANGE WITHOUT NOTICE.

Schneider Electric

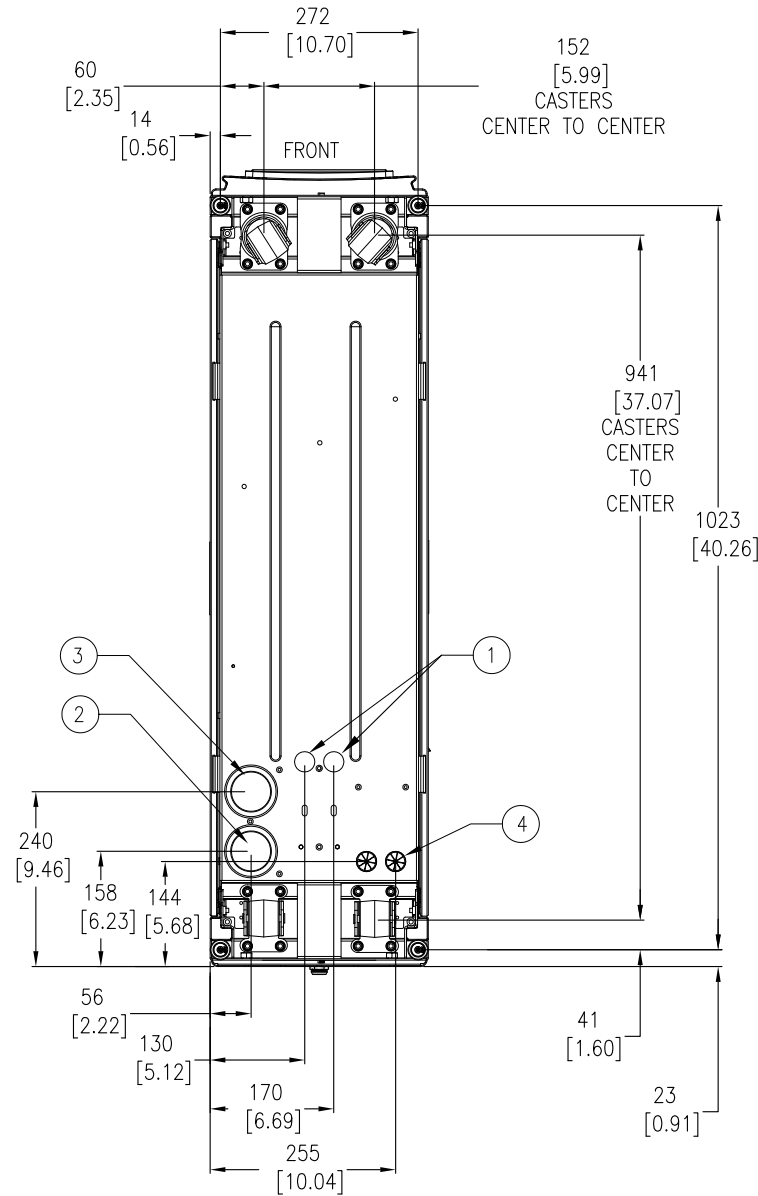
TITLE:
InRow Chilled Water Air Conditioners
InRow RC, 300mm, Chilled Water
208-230V, 50/60Hz, HARDWIRED
GENERAL ARRANGEMENT

DWG NO: **ACRC301H** REV. **2**
DRAWN: JAYAPRAKASH 10-FEB-15
ENGINEER: FAN GAO 10-FEB-15

PROJECT: DRAWINGS SHEET 3 OF 13 APPROVED: C CUMMISKEY/N SCHWEISSGUTH 10-FEB-15 FIRST ANGLE PJECTION



FRONT
TOP VIEW
(PIPING & POWER FEED LOCATIONS
FOR TOP PIPING AND POWER)



BOTTOM VIEW- LOOKING UP
(PIPING & POWER FEED LOCATIONS
FOR BOTTOM PIPING AND POWER)

- ① POWER CONNECTIONS
- ② RETURN (OUTLET) CONNECTIONS
(UNIT IS SUPPLIED WITH 1/4" FEMALE NPT)
- ③ SUPPLY (INLET) CONNECTIONS
(UNIT IS SUPPLIED WITH 1/4" FEMALE NPT)
- ④ LOW VOLTAGE INPUT WIRING
- ⑤ DOOR LATCHES (FRONT & REAR DOOR)

NOTES:

1. INSTALLATION SHALL COMPLY WITH ALL APPLICABLE NATIONAL, STATE AND LOCAL ELECTRICAL REGULATIONS.
2. REFER TO PRODUCT DOCUMENTATION FOR ADDITIONAL DETAILS PRIOR TO INSTALLATION AND SITE PREPARATION WORK.
3. ALL DIMENSIONS ARE IN MILLIMETERS [INCHES].

THIS DRAWING AND SPECIFICATIONS HEREIN ARE THE PROPERTY OF SCHNEIDER ELECTRIC AND SHALL NOT BE COPIED, REPRODUCED OR USED IN WHOLE OR IN PART, AS THE BASIS FOR THE MANUFACTURE OR SALE OF ITEMS WITHOUT WRITTEN PERMISSION FROM SCHNEIDER ELECTRIC. THIS DRAWING IS BASED UPON LATEST AVAILABLE INFORMATION AND IS SUBJECT TO CHANGE WITHOUT NOTICE.



TITLE:
InRow Chilled Water Air Conditioners
InRow RC, 300mm, Chilled Water
208-230V, 50/60Hz, HARDWIRED
TOP & BOTTOM VIEWS

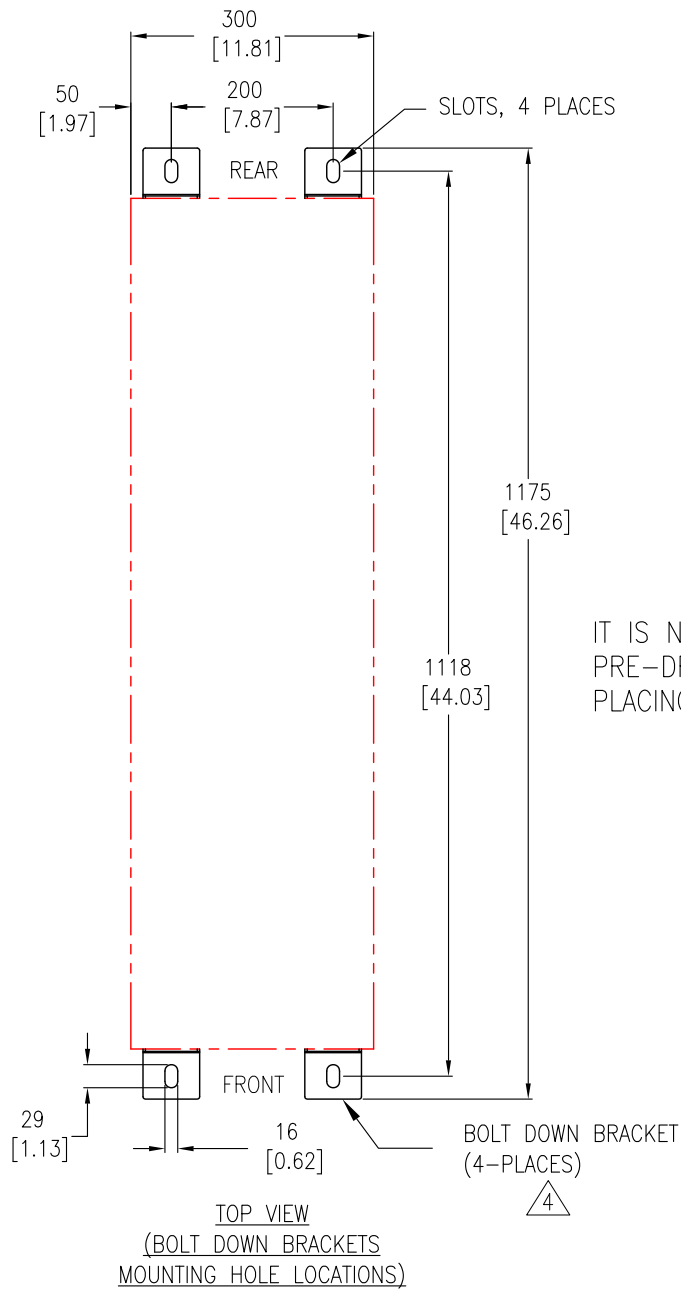
DWG NO: ACRC301H REV. 0

DRAWN: JAYAPRAKASH 26-FEB-14 FIRST ANGLE PROJECTION

ENGINEER: FAN GAO 10-MAR-14

APPROVED: C CUMMISKEY/N SCHWEISSUTH 10-MAR-14

PROJECT: DRAWINGS SHEET 4 OF 13



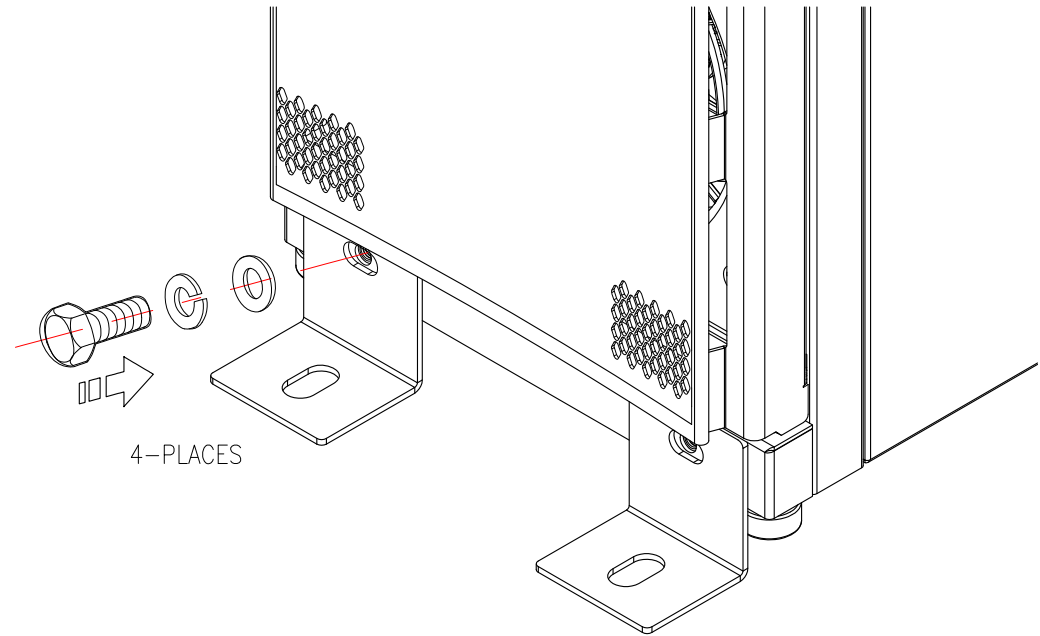
IT IS NOT RECOMMENDED TO PRE-DRILL HOLES BEFORE PLACING RC UNITS IN ROW.

NOTES:

1. INSTALLATION SHALL COMPLY WITH ALL APPLICABLE NATIONAL, STATE AND LOCAL ELECTRICAL REGULATIONS.
2. REFER TO PRODUCT DOCUMENTATION FOR ADDITIONAL DETAILS PRIOR TO INSTALLATION AND SITE PREPARATION WORK.
3. ALL DIMENSIONS ARE IN MILLIMETERS [INCHES].
- △4. BOLT-DOWN KIT (SKU#AR7701) IS OPTIONAL AND HAS TO BE ORDERED SEPARATELY.
5. REFER TO "INFRASTRUXURE InRow RC SEISMIC INSTALLATION GUIDE" FOR SEISMIC ANCHORING GUIDELINES.

STABILIZING THE InRow RC:

TO PREVENT THE ENCLOSURE FROM MOVING FROM ITS FINAL LOCATION (IF NOT JOINED WITH ANOTHER COMPONENT USE AR7701 (BOLT-DOWN KIT) ATTACH THE BRACKETS TO THE UNIT AS SHOWN. USE CODE COMPLIANT FASTENERS TO SECURE THE UNIT TO THE FLOOR.



NOTE:

1. RECOMMENDED TORQUE IS 9-11.3 N-m [80-100 LBS-INCHES]

THIS DRAWING AND SPECIFICATIONS HEREIN ARE THE PROPERTY OF SCHNEIDER ELECTRIC AND SHALL NOT BE COPIED, REPRODUCED OR USED IN WHOLE OR IN PART, AS THE BASIS FOR THE MANUFACTURE OR SALE OF ITEMS WITHOUT WRITTEN PERMISSION FROM SCHNEIDER ELECTRIC. THIS DRAWING IS BASED UPON LATEST AVAILABLE INFORMATION AND IS SUBJECT TO CHANGE WITHOUT NOTICE.



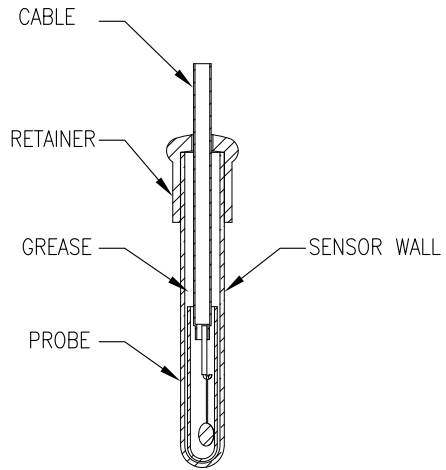
TITLE:
InRow Chilled Water Air Conditioners
InRow RC, 300mm, Chilled Water
208-230V, 50/60Hz, HARDWIRED
ANCHORING DETAILS

DWG NO: ACRC301H REV. 0

DRAWN: JAYAPRAKASH 26-FEB-14 FIRST ANGLE PROJECTION
ENGINEER: FAN GAO 10-MAR-14

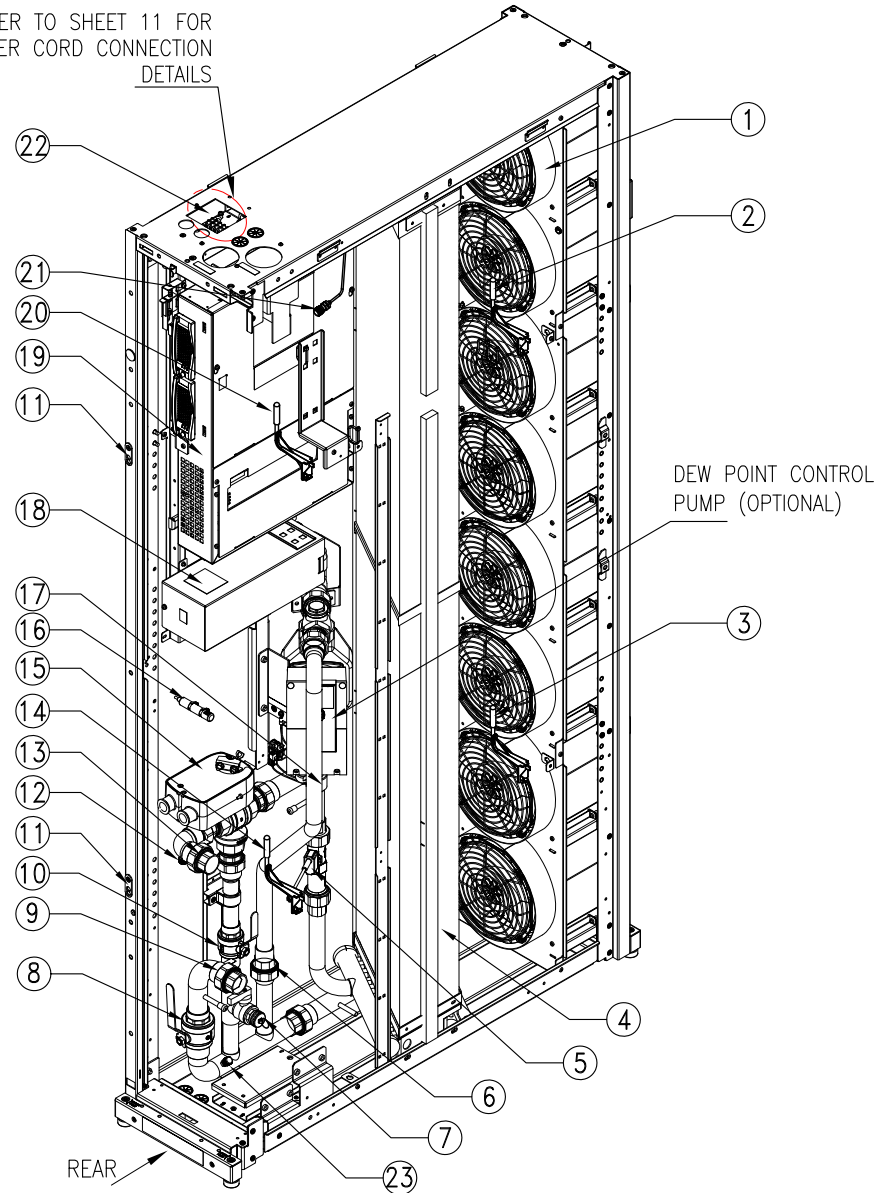
PROJECT: DRAWINGS SHEET 5 OF 13 APPROVED: C CUMMISKEY/N SCHWEISSUTH 10-MAR-14

FLUID TEMPERATURE SENSOR



SECTION VIEW

REFER TO SHEET 11 FOR
POWER CORD CONNECTION
DETAILS



- ① Fan Module
- ② Supply Air Temperature Sensor, Top
- ③ Supply Air Temperature Sensor, Bottom
- ④ Coil
- ⑤ Flow meter
- ⑥ Bottom pipe connection for optional re-circulation pump
- ⑦ Drain Valve
- ⑧ Inlet shutoff valve (1 1/4")
- ⑨ Pipe Connection, Water Inlet
- ⑩ 2-Way (1") Bypass Shut-off Valve
- ⑪ Baying Bracket
- ⑫ Schrader Valve (Outlet Water Pressure Test)
- ⑬ Pipe Connection, Water Outlet
- ⑭ Return Air Temperature Sensor, Bottom
- ⑮ 3-Way Actuator valve
- ⑯ Humidity Sensor
- ⑰ Bottom Pipe connection for optional Dew point control pump
- ⑱ Auto-Transfer Switch (ATS) Box
- ⑲ Electrical Box
- ⑳ Return Air Temperature Sensor, Top
- ㉑ Schrader Valve (Air Purging)
- ㉒ Power Supply (Junction Box, Top Position)
- ㉓ Schrader Valve (Inlet Water Pressure Test)

NOTES:

1. INSTALLATION SHALL COMPLY WITH ALL APPLICABLE NATIONAL, STATE AND LOCAL ELECTRICAL REGULATIONS.
2. REFER TO PRODUCT DOCUMENTATION FOR ADDITIONAL DETAILS PRIOR TO INSTALLATION AND SITE PREPARATION WORK.
3. SOME MECHANICAL DETAILS ARE REMOVED FOR THE PURPOSE OF CLARITY.

THIS DRAWING AND SPECIFICATIONS HEREIN ARE THE PROPERTY OF SCHNEIDER ELECTRIC AND SHALL NOT BE COPIED, REPRODUCED OR USED IN WHOLE OR IN PART, AS THE BASIS FOR THE MANUFACTURE OR SALE OF ITEMS WITHOUT WRITTEN PERMISSION FROM SCHNEIDER ELECTRIC. THIS DRAWING IS BASED UPON LATEST AVAILABLE INFORMATION AND IS SUBJECT TO CHANGE WITHOUT NOTICE.

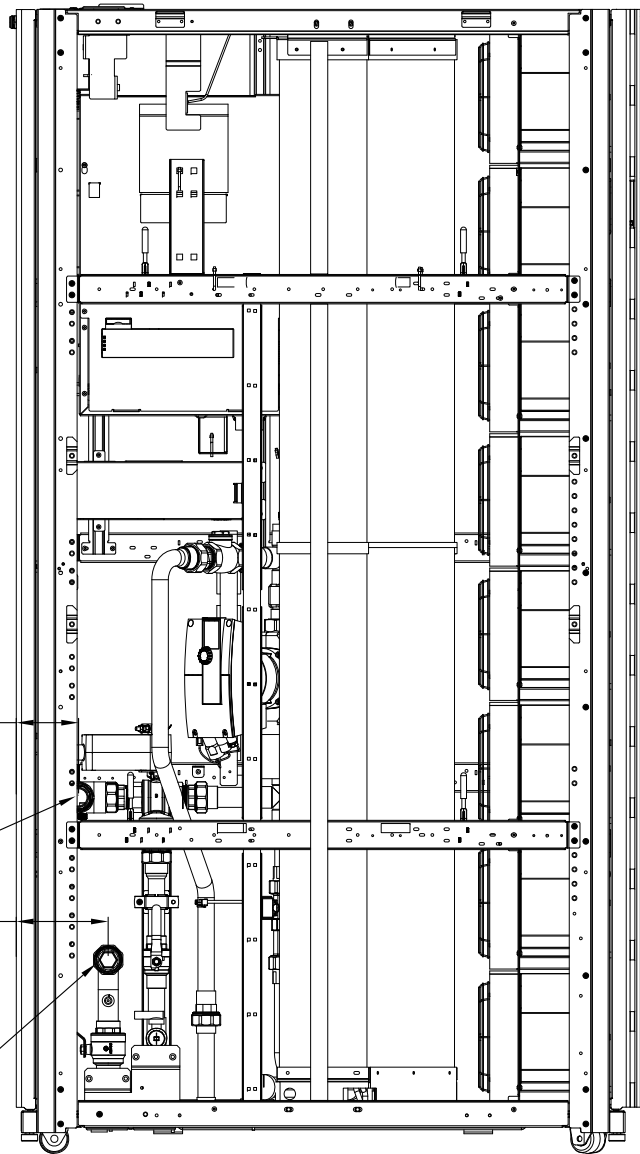


TITLE:
InRow Chilled Water Air Conditioners
InRow RC, 300mm, Chilled Water
208-230V, 50/60Hz, HARDWIRED
ISOMETRIC VIEW (INTERNAL)

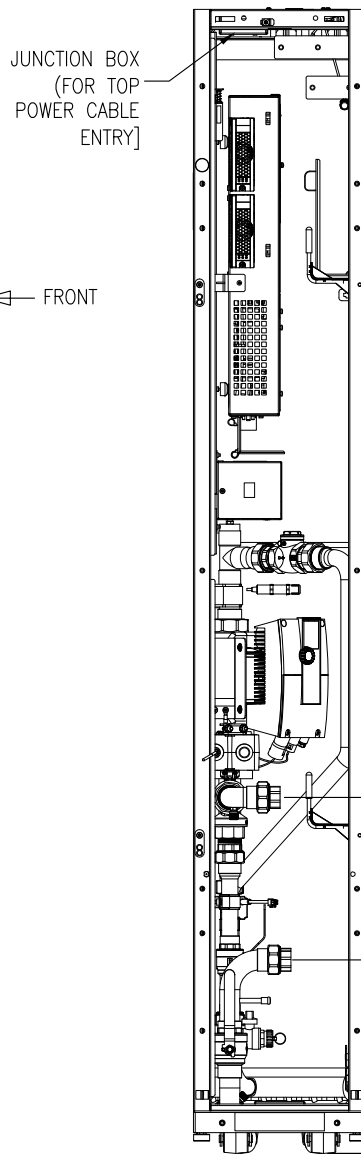
DWG NO: ACRC301H REV. 0

DRAWN: JAYAPRAKASH 26-FEB-14 FIRST ANGLE PROJECTION
ENGINEER: FAN GAO 10-MAR-14

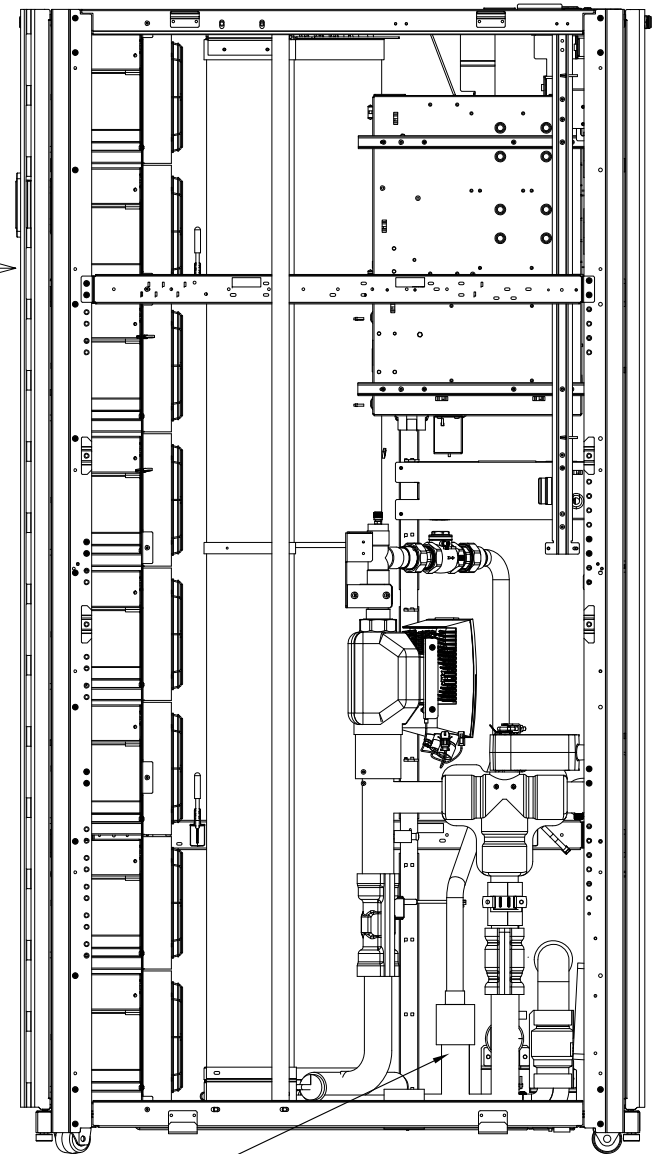
PROJECT: DRAWINGS SHEET 6 OF 13 APPROVED: C CUMMISKEY/N SCHWEISSUTH 10-MAR-14



RIGHT SIDE VIEW
PIPING CONNECTION LOCATIONS
(SIDE PANELS AND PIPING INSULATIONS REMOVED)



REAR VIEW
(REAR DOOR, FILTERS AND PIPING
INSULATION REMOVED)



LEFT SIDE VIEW
(SIDE PANELS REMOVED)

FLEXIBLE ELASTOMERIC CLOSED CELL PIPE INSULATION
THICKNESS: 9.52mm [3/8"]
THERMAL CONDUCTIVITY: 0.039 W/m-K @ 24°C/
0.27BTU-IN/HR-FT²-°F @ 75F

NOTES:

1. INSTALLATION SHALL COMPLY WITH ALL APPLICABLE NATIONAL, STATE AND LOCAL ELECTRICAL REGULATIONS.
2. REFER TO PRODUCT DOCUMENTATION FOR ADDITIONAL DETAILS PRIOR TO INSTALLATION AND SITE PREPARATION WORK.
3. ALL DIMENSIONS ARE IN MILLIMETERS [INCHES].
4. SOME MECHANICAL DETAILS ARE REMOVED FOR THE PURPOSE OF CLARITY.

THIS DRAWING AND SPECIFICATIONS HEREIN ARE THE PROPERTY OF SCHNEIDER ELECTRIC AND SHALL NOT BE COPIED, REPRODUCED OR USED IN WHOLE OR IN PART, AS THE BASIS FOR THE MANUFACTURE OR SALE OF ITEMS WITHOUT WRITTEN PERMISSION FROM SCHNEIDER ELECTRIC. THIS DRAWING IS BASED UPON LATEST AVAILABLE INFORMATION AND IS SUBJECT TO CHANGE WITHOUT NOTICE.

Schneider Electric

TITLE:
InRow Chilled Water Air Conditioners
InRow RC, 300mm, Chilled Water
208-230V, 50/60Hz, HARDWIRED
INTERNAL VIEWS

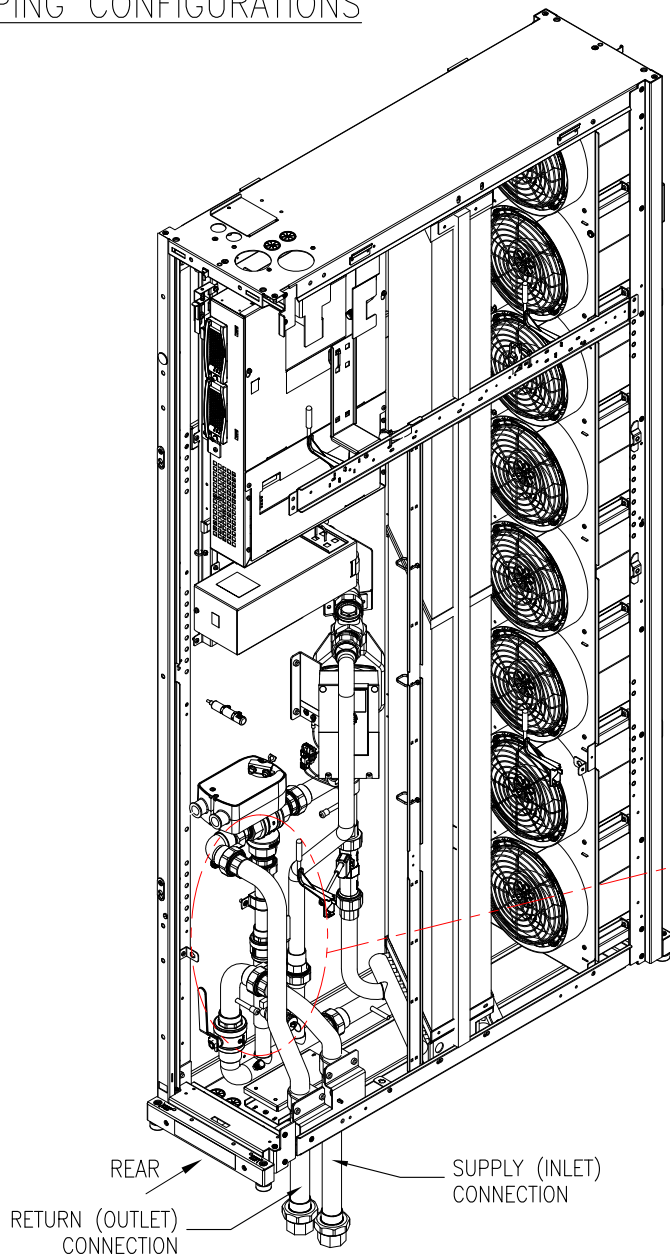
PROJECT: DRAWINGS SHEET 7 OF 13

DWG NO: ACRC301H REV. 0
DRAWN: JAYAPRAKASH 26-FEB-14
ENGINEER: FAN GAO 10-MAR-14

APPROVED: C CUMMISKEY/N SCHWEISSUTH 10-MAR-14

FIRST ANGLE PROJECTION

PIPING CONFIGURATIONS



BOTTOM PIPING CONFIGURATION

SUPPLY (INLET)
CONNECTION

RETURN (OUTLET)
CONNECTION

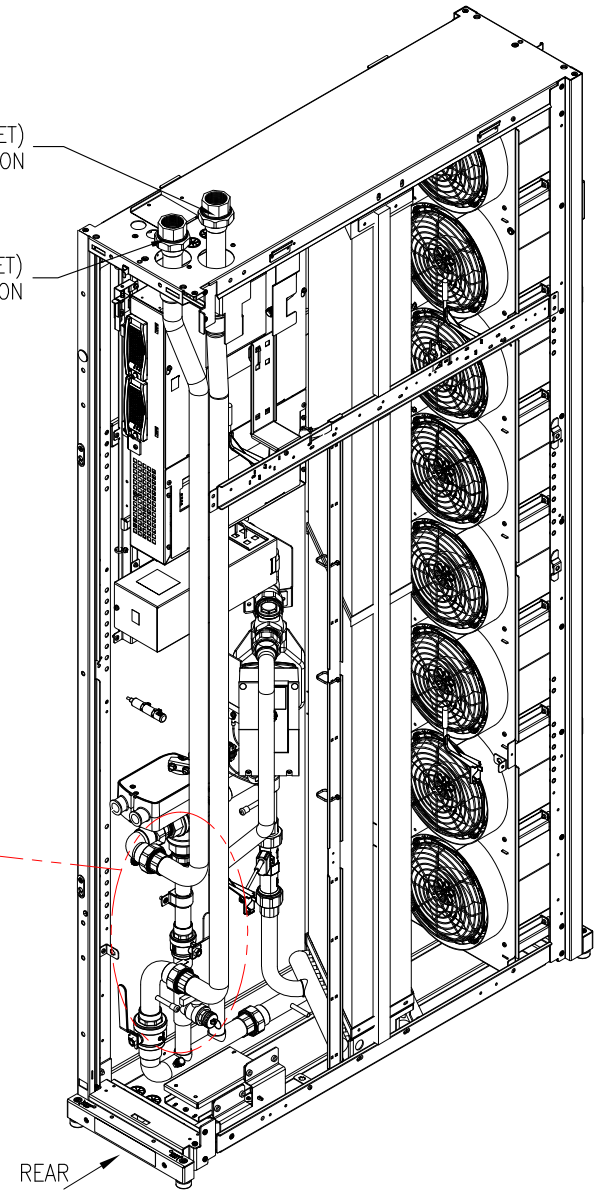
PIPE GASKET

END CAP

SUPPLY AND RETURN PIPING
(EXPLODED VIEW)

PREPARATION FOR SUPPLY AND RETURN PIPING

1. REMOVE END CAP.
2. INSTALL THE PROVIDED PIPE GASKET AND PIPING KIT.
(INSTALL THE INLET PIPE FIRST)
3. TIGHTEN CONNECTIONS TO 40N-m [29lbs/ft]



TOP PIPING CONFIGURATION

- NOTES:
1. INSTALLATION SHALL COMPLY WITH ALL APPLICABLE NATIONAL, STATE AND LOCAL ELECTRICAL REGULATIONS.
 2. REFER TO PRODUCT DOCUMENTATION FOR ADDITIONAL DETAILS PRIOR TO INSTALLATION AND SITE PREPARATION WORK.
 3. SOME MECHANICAL DETAILS ARE REMOVED FOR THE PURPOSE OF CLARITY.
 4. BOTTOM PIPING IS DEFAULT, USE UPPER PIPING KIT – ACAC10033 FOR TOP PIPING.

THIS DRAWING AND SPECIFICATIONS HEREIN ARE THE PROPERTY OF SCHNEIDER ELECTRIC AND SHALL NOT BE COPIED, REPRODUCED OR USED IN WHOLE OR IN PART, AS THE BASIS FOR THE MANUFACTURE OR SALE OF ITEMS WITHOUT WRITTEN PERMISSION FROM SCHNEIDER ELECTRIC. THIS DRAWING IS BASED UPON LATEST AVAILABLE INFORMATION AND IS SUBJECT TO CHANGE WITHOUT NOTICE.



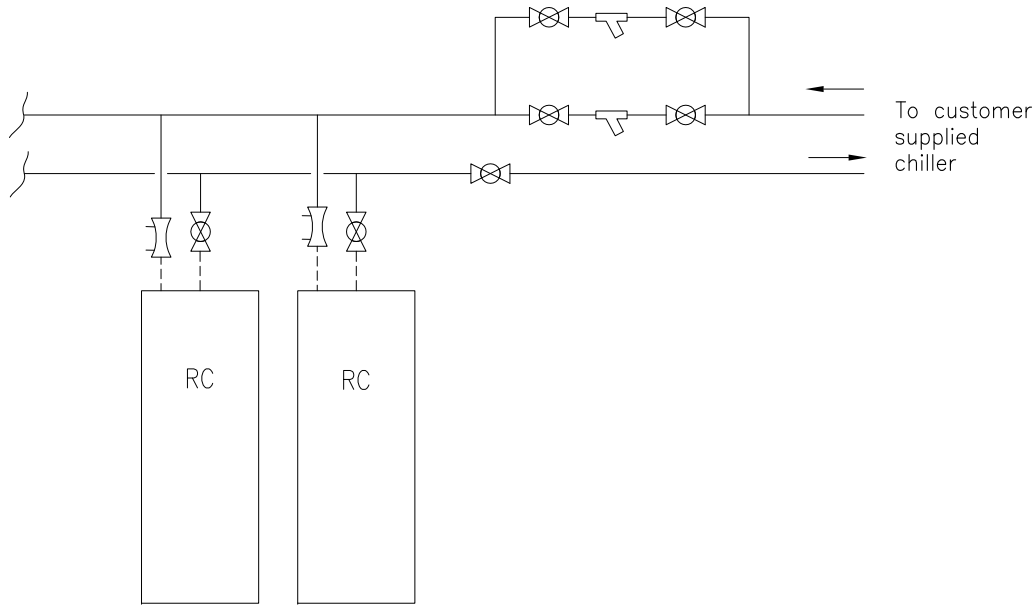
TITLE:
InRow Chilled Water Air Conditioners
InRow RC, 300mm, Chilled Water
208-230V, 50/60Hz, HARDWIRED
TOP AND BOTTOM PIPING DETAILS

DWG NO: **ACRC301H** REV. **0**

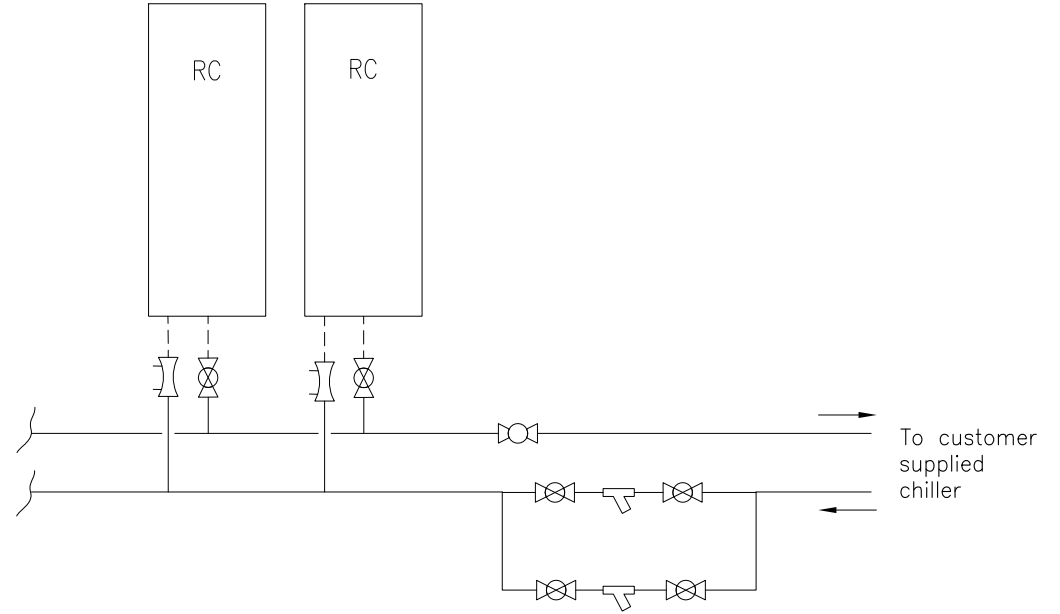
DRAWN: JAYAPRAKASH 26-FEB-14 FIRST ANGLE
ENGINEER: FAN GAO 10-MAR-14 PROJECTION

PROJECT: DRAWINGS SHEET 8 OF 13 APPROVED: C CUMMISKEY/N SCHWEISSUTH 10-MAR-14

TOP PIPING




BOTTOM PIPING



----- Flex hose, Copper, or Steel tubing

————— Steel or Copper Tubing

 Shutoff valve (field installed)

 Y-strainer with 20 mesh stainless steel screen (Opening size=865 micron) are to be field installed as shown.

 Circuit setter (field-installed)

NOTES:

1. INSTALLATION SHALL COMPLY WITH ALL APPLICABLE NATIONAL, STATE AND LOCAL ELECTRICAL REGULATIONS.
2. REFER TO PRODUCT DOCUMENTATION FOR ADDITIONAL DETAILS PRIOR TO INSTALLATION AND SITE PREPARATION WORK.
3. ILLUSTRATIONS SHOWS PIPING PROVIDED BY OTHERS.

THIS DRAWING AND SPECIFICATIONS HEREIN ARE THE PROPERTY OF SCHNEIDER ELECTRIC AND SHALL NOT BE COPIED, REPRODUCED OR USED IN WHOLE OR IN PART, AS THE BASIS FOR THE MANUFACTURE OR SALE OF ITEMS WITHOUT WRITTEN PERMISSION FROM SCHNEIDER ELECTRIC. THIS DRAWING IS BASED UPON LATEST AVAILABLE INFORMATION AND IS SUBJECT TO CHANGE WITHOUT NOTICE.

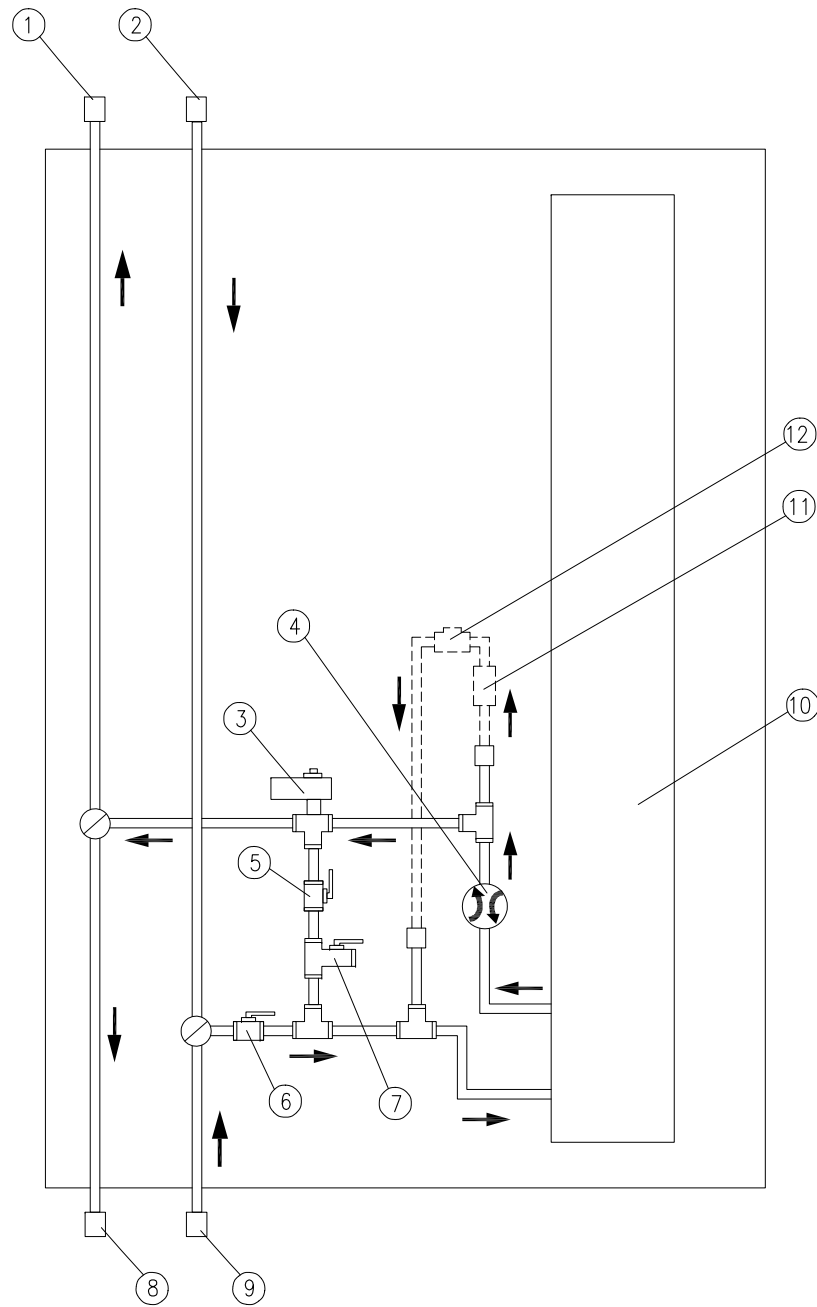


TITLE:
InRow Chilled Water Air Conditioners
InRow RC, 300mm, Chilled Water
208-230V, 50/60Hz, HARDWIRED
PIPING DIAGRAM

DWG NO: ACRC301H REV. 0

DRAWN: JAYAPRAKASH 26-FEB-14 FIRST ANGLE PROJECTION
ENGINEER: FAN GAO 10-MAR-14

PROJECT: DRAWINGS SHEET 9 OF 13 APPROVED: C CUMMISKEY/N SCHWEISSUTH 10-MAR-14



- ① OUTLET WATER UNION (Top piping option)
- ② INLET WATER UNION (Top piping option)
- ③ 3-WAY ACTUATED CONTROL VALVE-1¼"
- ④ FLOW METER
- ⑤ BYPASS SHUTOFF VALVE-1"
- ⑥ INLET SHUTOFF VALVE-1¼"
- ⑦ DRAIN VALVE
- ⑧ OUTLET WATER UNION (Bottom piping option)
- ⑨ INLET WATER UNION (Bottom piping option)
- ⑩ COIL
- ⑪ DEW POINT CONTROL PUMP (OPTIONAL)
- ⑫ DEW POINT CONTROL PUMP CHECK VALVE (OPTIONAL)

NOTES:

1. INSTALLATION SHALL COMPLY WITH ALL APPLICABLE NATIONAL, STATE AND LOCAL ELECTRICAL REGULATIONS.
2. REFER TO PRODUCT DOCUMENTATION FOR ADDITIONAL DETAILS PRIOR TO INSTALLATION AND SITE PREPARATION WORK.

THIS DRAWING AND SPECIFICATIONS HEREIN ARE THE PROPERTY OF SCHNEIDER ELECTRIC AND SHALL NOT BE COPIED, REPRODUCED OR USED IN WHOLE OR IN PART, AS THE BASIS FOR THE MANUFACTURE OR SALE OF ITEMS WITHOUT WRITTEN PERMISSION FROM SCHNEIDER ELECTRIC. THIS DRAWING IS BASED UPON LATEST AVAILABLE INFORMATION AND IS SUBJECT TO CHANGE WITHOUT NOTICE.

Schneider Electric

TITLE:
InRow Chilled Water Air Conditioners
InRow RC, 300mm, Chilled Water
208-230V, 50/60Hz, HARDWIRED
INTERNAL PIPING

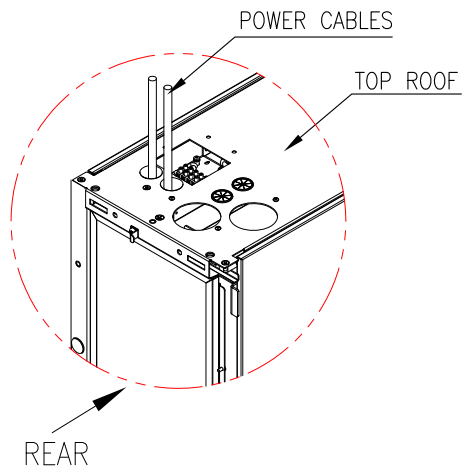
DWG NO: ACRC301H REV. 0

DRAWN: JAYAPRAKASH	26-FEB-14	FIRST ANGLE PROJECTION
ENGINEER: PAN GAO	10-MAR-14	

PROJECT: DRAWINGS	SHEET 10 OF 13	APPROVED: C CUMMISKEY/N SCHWEISSUTH	10-MAR-14
-------------------	----------------	-------------------------------------	-----------

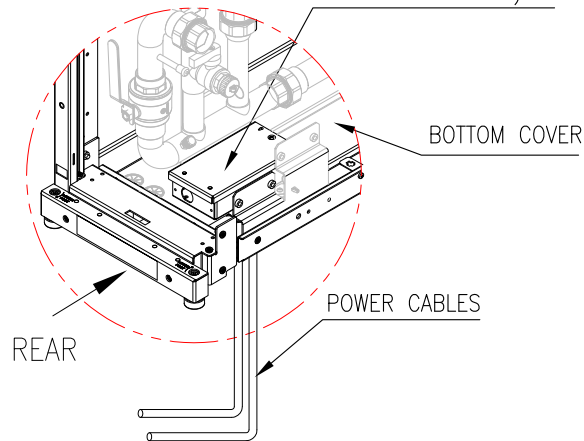
POWER CORD CONNECTIONS

TOP CABLE ENTRY

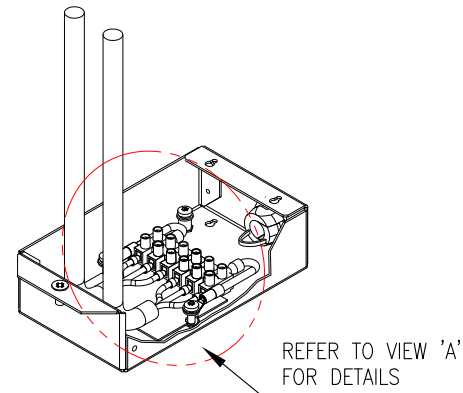


BOTTOM CABLE ENTRY

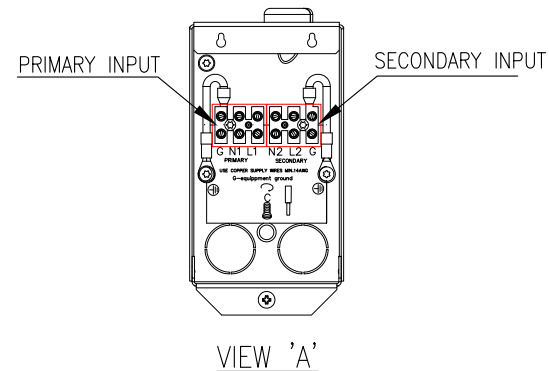
JUNCTION BOX
(FOR BOTTOM CABLE ENTRY, REMOVE THE JUNCTION BOX FROM THE TOP OF THE UNIT AND RELOCATE TO THE BOTTOM AS SHOWN)



JUNCTION BOX WIRING DETAILS



(TOP CABLE ENTRY WIRING SHOWN FOR ILLUSTRATION)



NOTES:

1. INSTALLATION SHALL COMPLY WITH ALL APPLICABLE NATIONAL, STATE AND LOCAL CODES.
2. REFER TO PRODUCT DOCUMENTATION FOR ADDITIONAL DETAILS PRIOR TO INSTALLATION AND SITE PREPARATION WORK.

THIS DRAWING AND SPECIFICATIONS HEREIN ARE THE PROPERTY OF SCHNEIDER ELECTRIC AND SHALL NOT BE COPIED, REPRODUCED OR USED IN WHOLE OR IN PART, AS THE BASIS FOR THE MANUFACTURE OR SALE OF ITEMS WITHOUT WRITTEN PERMISSION FROM SCHNEIDER ELECTRIC. THIS DRAWING IS BASED UPON LATEST AVAILABLE INFORMATION AND IS SUBJECT TO CHANGE WITHOUT NOTICE.



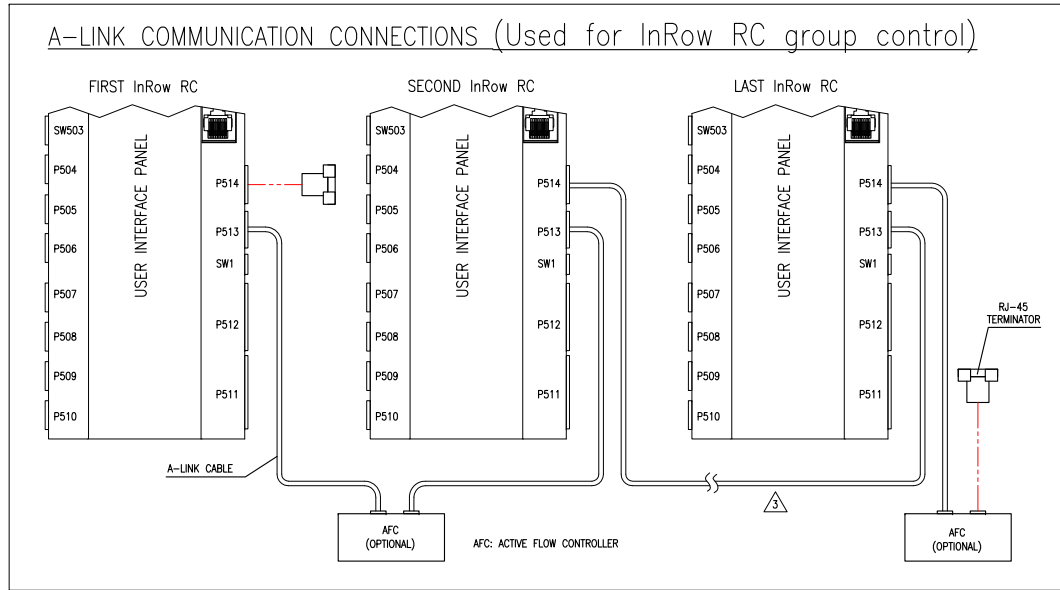
TITLE:
InRow Chilled Water Air Conditioners
InRow RC, 300mm, Chilled Water
208-230V, 50/60Hz, HARDWIRED
POWER CORD CONNECTIONS

PROJECT: DRAWINGS SHEET 11 OF 13

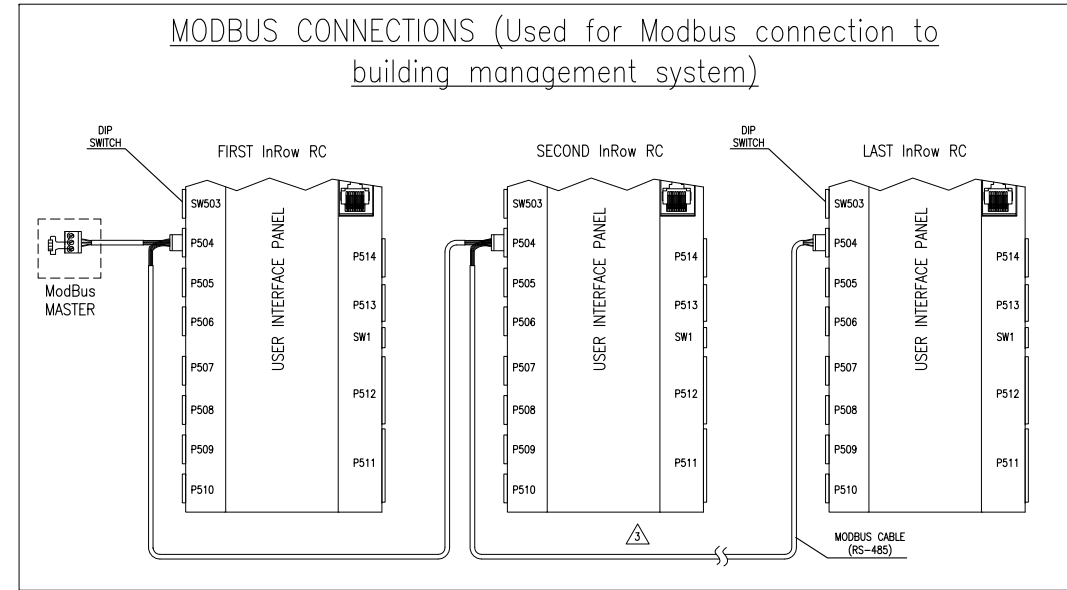
DWG NO:	ACRC301H	REV.	0
DRAWN:	JAYAPRAKASH	26-FEB-14	FIRST ANGLE PROJECTION
ENGINEER:	FAN GAO	10-MAR-14	
APPROVED:	C CUMMISKEY/N SCHWEISSUTH	10-MAR-14	

INTERFACE CONNECTIONS

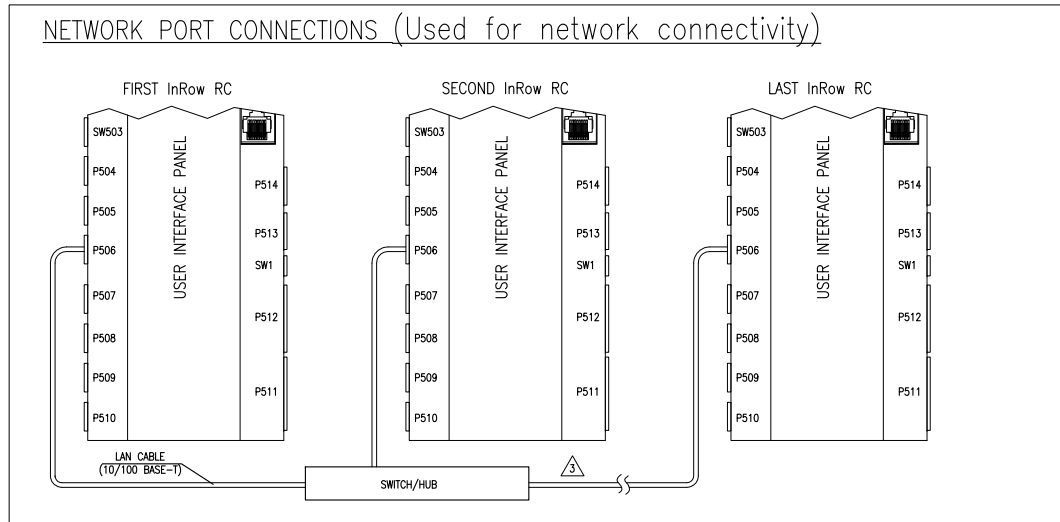
A-LINK COMMUNICATION CONNECTIONS (Used for InRow RC group control)



MODBUS CONNECTIONS (Used for Modbus connection to building management system)



NETWORK PORT CONNECTIONS (Used for network connectivity)



- NOTES:
1. INSTALLATION SHALL COMPLY WITH ALL APPLICABLE NATIONAL, STATE AND LOCAL ELECTRICAL REGULATIONS.
 2. REFER TO PRODUCT DOCUMENTATION FOR ADDITIONAL DETAILS PRIOR TO INSTALLATION AND SITE PREPARATION WORK.
 - △3. INTERCONNECTING WIRING IS SUPPLIED AND FIELD INSTALLED BY OTHERS.

THIS DRAWING AND SPECIFICATIONS HEREIN ARE THE PROPERTY OF SCHNEIDER ELECTRIC AND SHALL NOT BE COPIED, REPRODUCED OR USED IN WHOLE OR IN PART, AS THE BASIS FOR THE MANUFACTURE OR SALE OF ITEMS WITHOUT WRITTEN PERMISSION FROM SCHNEIDER ELECTRIC. THIS DRAWING IS BASED UPON LATEST AVAILABLE INFORMATION AND IS SUBJECT TO CHANGE WITHOUT NOTICE.



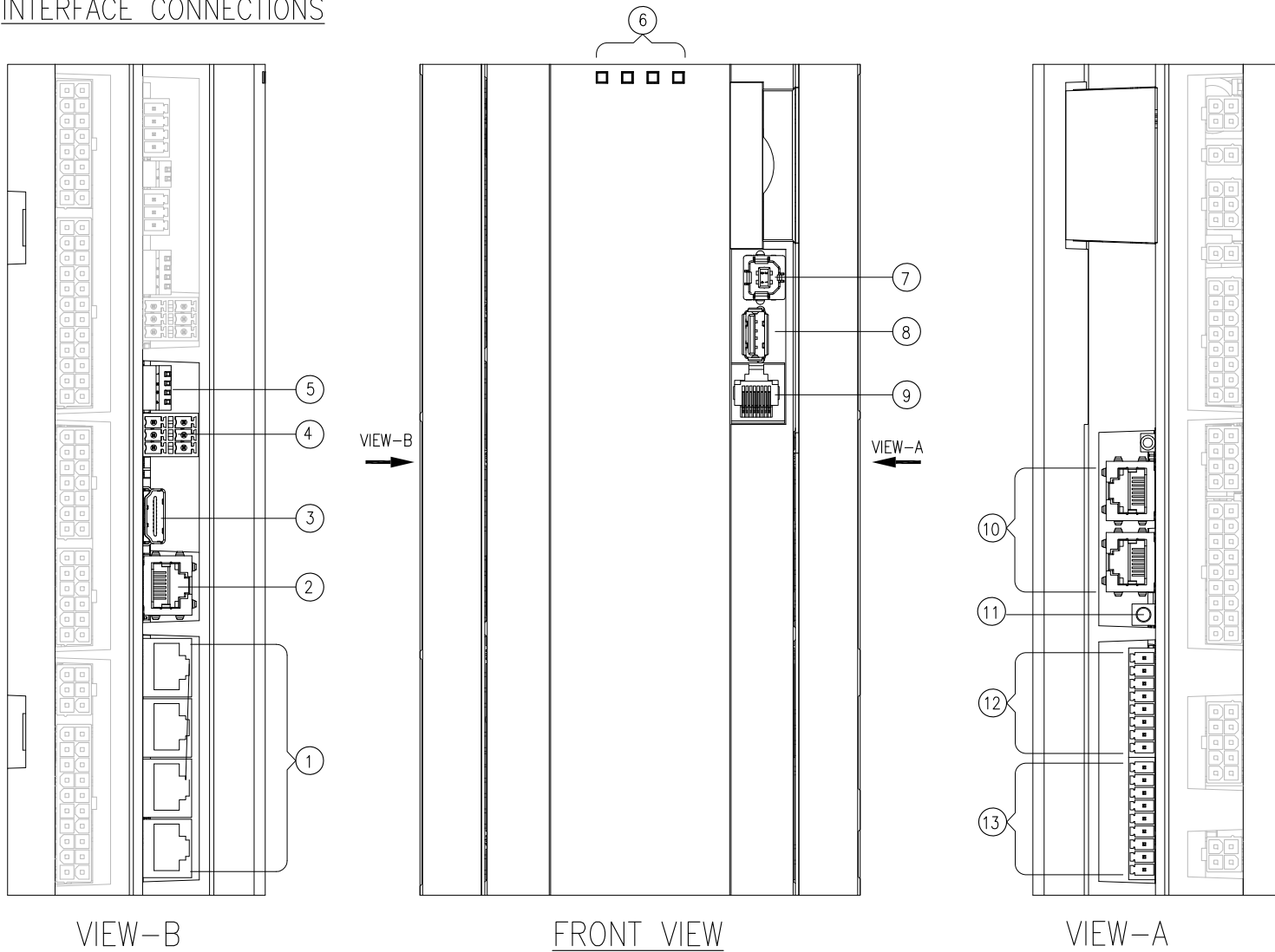
TITLE:
InRow Chilled Water Air Conditioners
InRow RC, 300mm, Chilled Water
208-230V, 50/60Hz, HARDWIRED
CONTROL CONNECTION

PROJECT: DRAWINGS SHEET 12 OF 13

DWG NO: ACRC301H REV. 0

DRAWN: JAYAPRAKASH	26-FEB-14	FIRST ANGLE PROJECTION
ENGINEER: FAN GAO	10-MAR-14	
APPROVED: C CUMMISKEY/N SCHWEISSUTH	10-MAR-14	

INTERFACE CONNECTIONS



- ① UNIVERSAL SENSOR PORTS
- ② NETWORK CONNECTION
- ③ TOUCH SCREEN DISPLAY CONNECTION
- ④ ModBus CONNECTION
- ⑤ ModBus CONFIGURATION SWITCHES
- ⑥ PROCESSOR STATUS LED
- ⑦ USB DEVICE PORT
- ⑧ USB HOST PORT
- ⑨ SERIAL PORT
- ⑩ A-Link PORT
- ⑪ RESET BUTTON
- ⑫ OUTPUT RELAY 4/REMOTE SHUTDOWN INPUT
- ⑬ OUTPUT RELAY 1-3

NOTES:

1. INSTALLATION SHALL COMPLY WITH ALL APPLICABLE NATIONAL, STATE AND LOCAL ELECTRICAL REGULATIONS.
2. REFER TO PRODUCT DOCUMENTATION FOR ADDITIONAL DETAILS PRIOR TO INSTALLATION AND SITE PREPARATION WORK.

THIS DRAWING AND SPECIFICATIONS HEREIN ARE THE PROPERTY OF SCHNEIDER ELECTRIC AND SHALL NOT BE COPIED, REPRODUCED OR USED IN WHOLE OR IN PART, AS THE BASIS FOR THE MANUFACTURE OR SALE OF ITEMS WITHOUT WRITTEN PERMISSION FROM SCHNEIDER ELECTRIC. THIS DRAWING IS BASED UPON LATEST AVAILABLE INFORMATION AND IS SUBJECT TO CHANGE WITHOUT NOTICE.



TITLE:
InRow Chilled Water Air Conditioners
InRow RC, 300mm, Chilled Water
208-230V, 50/60Hz, HARDWIRED
INTERFACE CONNECTIONS

DWG NO:	ACRC301H	REV.	0
DRAWN:	JAYAPRAKASH	26-FEB-14	FIRST ANGLE PROJECTION
ENGINEER:	FAN GAO	10-MAR-14	
APPROVED:	C CUMMISKEY/N SCHWEISSUTH	10-MAR-14	