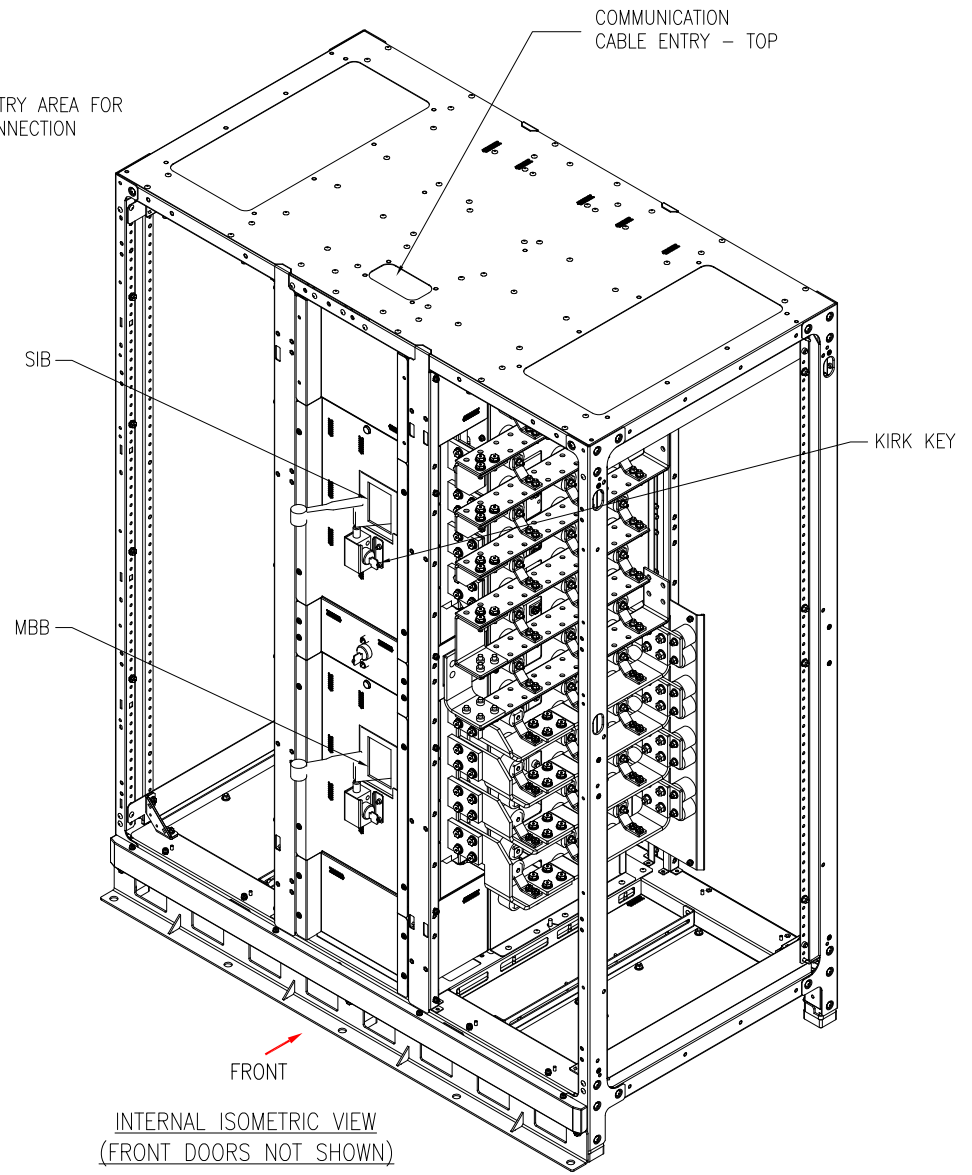


EXTERNAL ISOMETRIC VIEW



INTERNAL ISOMETRIC VIEW
(FRONT DOORS NOT SHOWN)

NOTES:

1. INSTALLATION SHALL COMPLY WITH ALL APPLICABLE NATIONAL, STATE AND LOCAL CODES.
2. REFER TO PRODUCT DOCUMENTATION FOR ADDITIONAL DETAILS PRIOR TO INSTALLATION AND SITE PREPARATION WORK.

THIS DRAWING AND SPECIFICATIONS HEREIN ARE THE PROPERTY OF SCHNEIDER ELECTRIC AND SHALL NOT BE COPIED, REPRODUCED OR USED IN WHOLE OR IN PART, AS THE BASIS FOR THE MANUFACTURE OR SALE OF ITEMS WITHOUT WRITTEN PERMISSION FROM SCHNEIDER ELECTRIC. THIS DRAWING IS BASED UPON LATEST AVAILABLE INFORMATION AND IS SUBJECT TO CHANGE WITHOUT NOTICE.



TITLE: Galaxy VM
SYSTEM BYPASS CABINET 675K
Input: 480V, 3PH, 40-70Hz
Output: 480V, 3PH, 60Hz
ISOMETRIC VIEWS

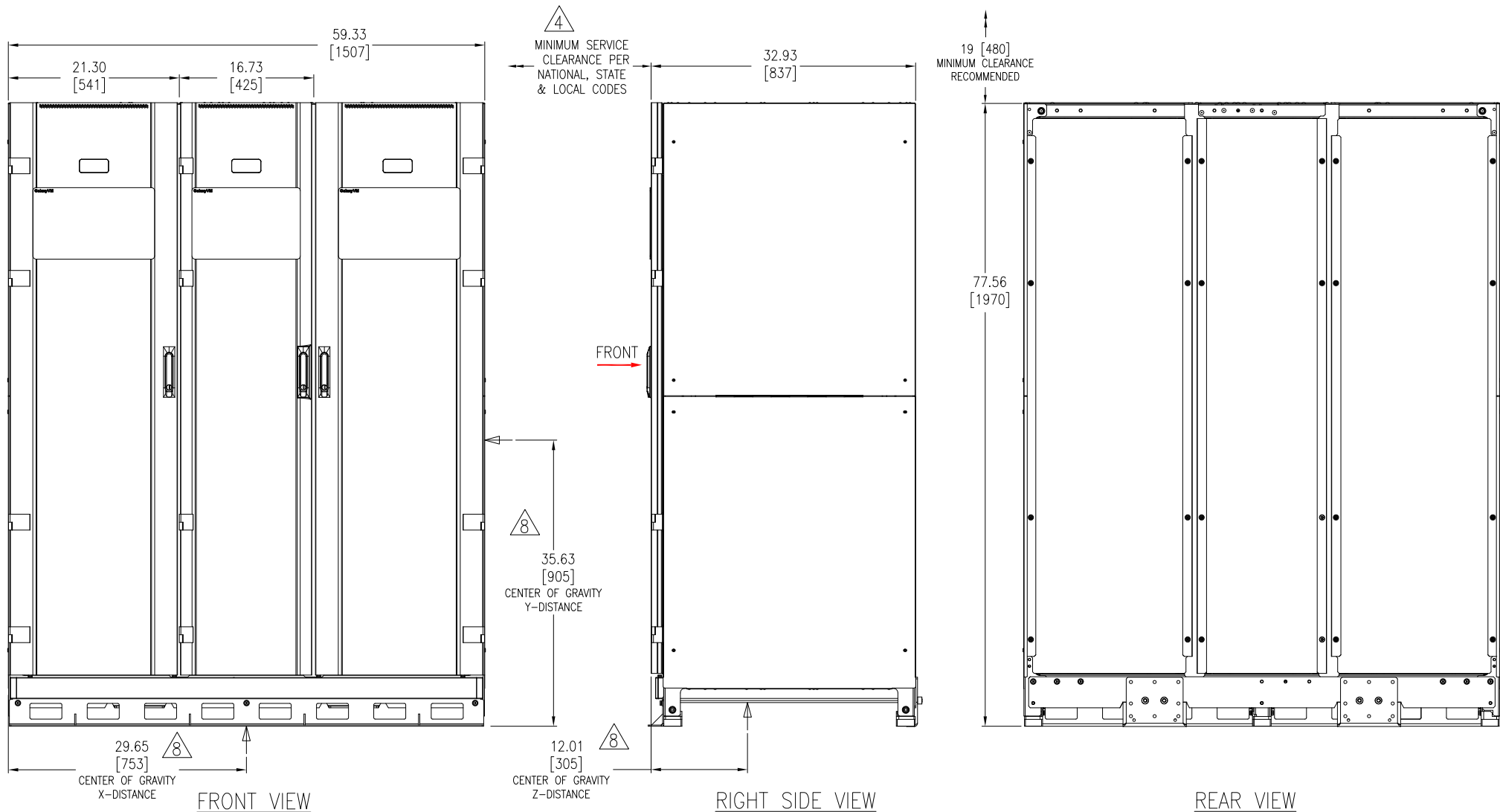
PROJECT: DRAWINGS **SHEET** 1 OF 7

DWG NO: GVMSBC675KG **REV.** 1

DRAWN BY: JAYAPRAKASH 12-FEB-14 **THIRD**

ENGINEER: Z WILLIAM 12-FEB-14 **ANGLE**

APPROVED BY: M PAULSEN 12-FEB-14 **PROJECTION**



NOTES:

1. INSTALLATION SHALL COMPLY WITH ALL APPLICABLE NATIONAL, STATE AND LOCAL CODES.
2. REFER TO PRODUCT DOCUMENTATION FOR ADDITIONAL DETAILS PRIOR TO INSTALLATION AND SITE PREPARATION WORK.
3. ALL DIMENSIONS ARE IN INCHES [MILLIMETERS].
- △ 4. FRONT ACCESS REQUIRED FOR SERVICE.
5. CABLE ENTRY IS FROM TOP OR BOTTOM OF THE UNIT.
6. THE WEIGHT OF THE UNIT IS 1111 LB [505 kg].
7. COLOR:
SIDES+DOORS - RAL 9003 WHITE.
DISPLAY - SCHNEIDER ELECTRIC GRAY.
- △ 8. THIS INFORMATION PROVIDES CONSERVATIVE CENTER OF GRAVITY CALCULATION.

THIS DRAWING AND SPECIFICATIONS HEREIN ARE THE PROPERTY OF SCHNEIDER ELECTRIC AND SHALL NOT BE COPIED, REPRODUCED OR USED IN WHOLE OR IN PART, AS THE BASIS FOR THE MANUFACTURE OR SALE OF ITEMS WITHOUT WRITTEN PERMISSION FROM SCHNEIDER ELECTRIC. THIS DRAWING IS BASED UPON LATEST AVAILABLE INFORMATION AND IS SUBJECT TO CHANGE WITHOUT NOTICE.



TITLE: Galaxy VM
SYSTEM BYPASS CABINET 675K
Input: 480V, 3PH, 40-70Hz
Output: 480V, 3PH, 60Hz
GENERAL ARRANGEMENT

DWG NO: GVMSBC675KG

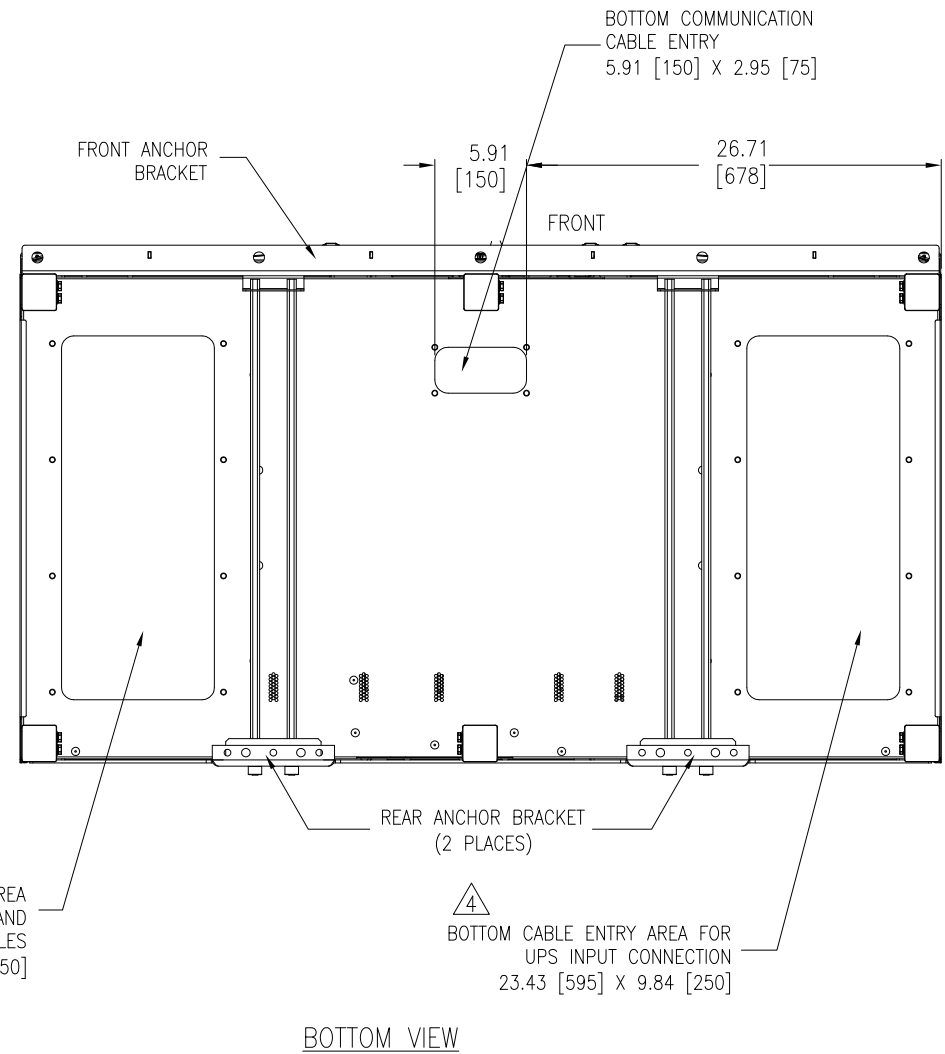
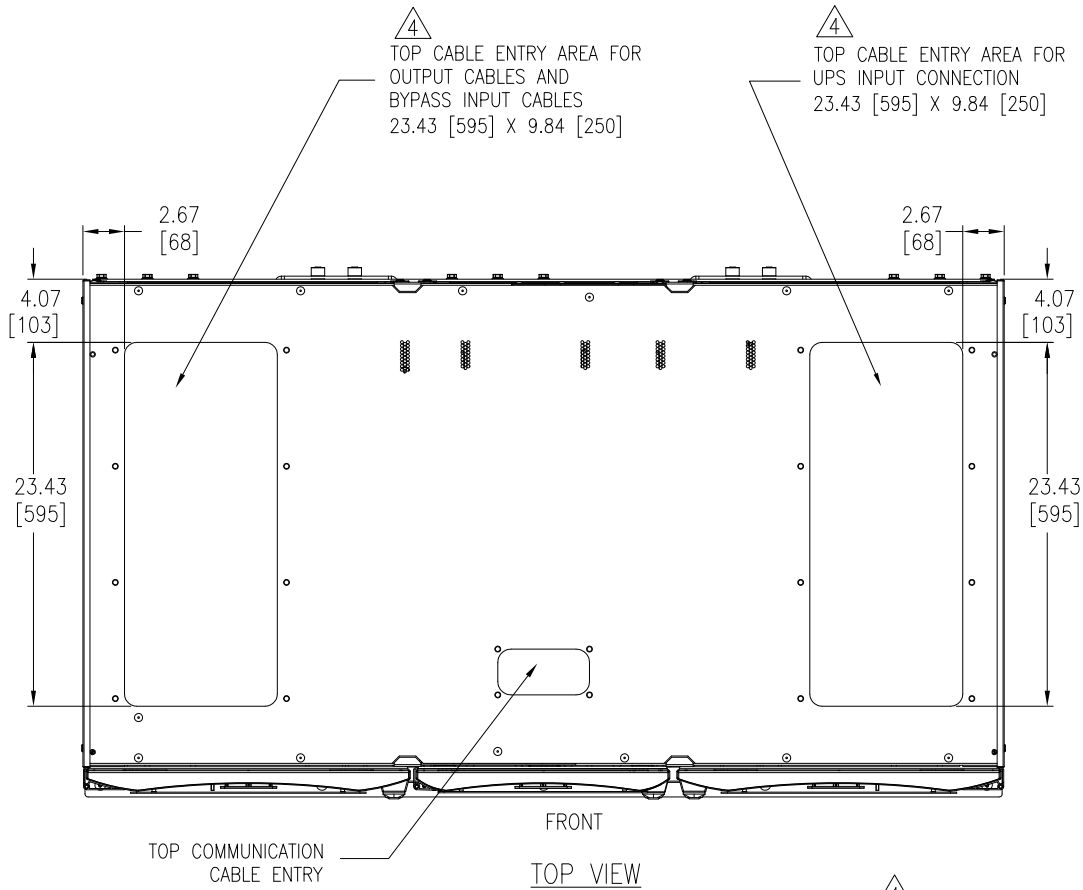
REV. 1

DRAWN BY: JAYAPRAKASH 12-FEB-14 THIRD

ENGINEER: Z WILLIAM 12-FEB-14 ANGLE

APPROVED BY: M PAULSEN 12-FEB-14 PROJECTION

PROJECT: DRAWINGS **SHEET 2 OF 7**



NOTES:

1. INSTALLATION SHALL COMPLY WITH ALL APPLICABLE NATIONAL, STATE AND LOCAL CODES.
2. REFER TO PRODUCT DOCUMENTATION FOR ADDITIONAL DETAILS PRIOR TO INSTALLATION AND SITE PREPARATION WORK.
3. ALL DIMENSIONS ARE IN INCHES [MILLIMETERS].
- △ 4. DRILL/PUNCH HOLES IN PLATE. REMOVE PLATE FROM CABINET BEFORE DRILLING/PUNCHING.

THIS DRAWING AND SPECIFICATIONS HEREIN ARE THE PROPERTY OF SCHNEIDER ELECTRIC AND SHALL NOT BE COPIED, REPRODUCED OR USED IN WHOLE OR IN PART, AS THE BASIS FOR THE MANUFACTURE OR SALE OF ITEMS WITHOUT WRITTEN PERMISSION FROM SCHNEIDER ELECTRIC. THIS DRAWING IS BASED UPON LATEST AVAILABLE INFORMATION AND IS SUBJECT TO CHANGE WITHOUT NOTICE.

Schneider Electric

TITLE: Galaxy VM
SYSTEM BYPASS CABINET 675K
Input: 480V, 3PH, 40-70Hz
Output: 480V, 3PH, 60Hz
TOP AND BOTTOM VIEWS

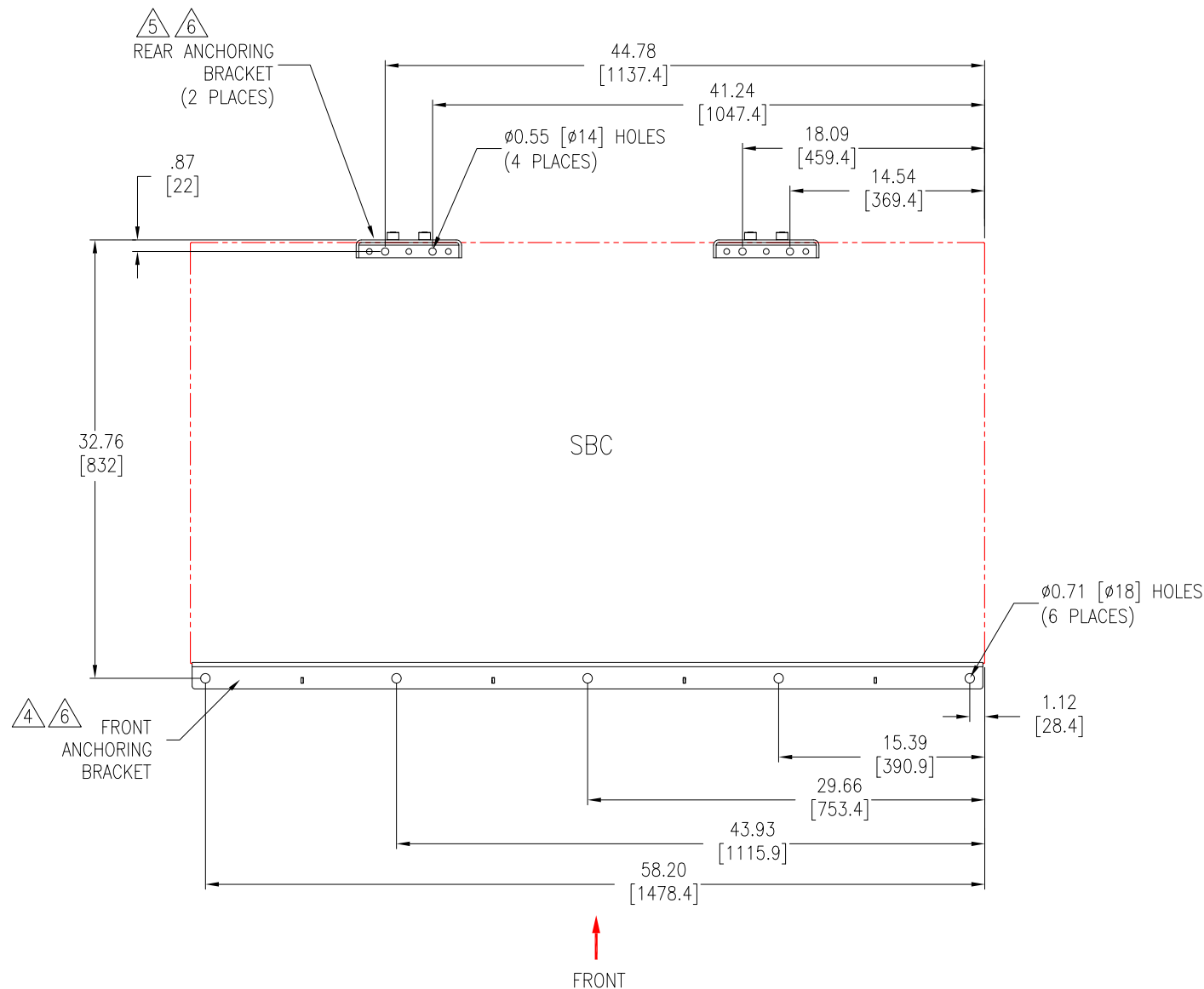
PROJECT: DRAWINGS SHEET 3 OF 7

DWG NO: GVMSBC675KG REV. 1

DRAWN BY: JAYAPRAKASH 12-FEB-14 THIRD

ENGINEER: Z WILLIAM 12-FEB-14 ANGLE

APPROVED BY: M PAULSEN 12-FEB-14 PROJECTION



TOP VIEW
MOUNTING HOLE LOCATIONS
FOR ANCHORING BRACKETS

NOTES:

- INSTALLATION SHALL COMPLY WITH ALL APPLICABLE NATIONAL, STATE AND LOCAL CODES.
- REFER TO PRODUCT DOCUMENTATION FOR ADDITIONAL DETAILS PRIOR TO INSTALLATION AND SITE PREPARATION WORK.
- ALL DIMENSIONS ARE IN INCHES [MILLIMETERS].
- FIXATION OF ANCHORING BRACKETS IN FRONT IS OPTIONAL IN NON-SEISMIC LOCATIONS. FOR SEISMIC COMPLIANCE, USE CODE COMPLIANT FASTENERS TO SECURE UNIT TO THE FLOOR.
- USE THE BAYING BRACKET THAT WAS ATTACHED TO THE REAR PALLET OF THE CABINET FOR ANCHORING THE UNIT.
- IN AREAS WHERE SEISMIC PROTECTION IS REQUIRED, FOLLOW THE INSTRUCTION IN GVMANCHORING-SA DRAWING. FLOOR ANCHORING BOLTS ARE NOT SUPPLIED.
- FOR INSTALLATION ON RAISED FLOOR, FOLLOW THE INSTRUCTION IN GVMANCHORING-RF DRAWING. FLOOR ANCHORING BOLTS ARE NOT SUPPLIED.

THIS DRAWING AND SPECIFICATIONS HEREIN ARE THE PROPERTY OF SCHNEIDER ELECTRIC AND SHALL NOT BE COPIED, REPRODUCED OR USED IN WHOLE OR IN PART, AS THE BASIS FOR THE MANUFACTURE OR SALE OF ITEMS WITHOUT WRITTEN PERMISSION FROM SCHNEIDER ELECTRIC. THIS DRAWING IS BASED UPON LATEST AVAILABLE INFORMATION AND IS SUBJECT TO CHANGE WITHOUT NOTICE.



TITLE: Galaxy VM
SYSTEM BYPASS CABINET 675K
Input: 480V, 3PH, 40-70Hz
Output: 480V, 3PH, 60Hz
ANCHORING DETAILS

PROJECT: DRAWINGS SHEET 4 OF 7

DWG NO: GVMSBC675KG

DRAWN BY: JAYAPRAKASH 12-FEB-14

ENGINEER: Z WILLIAM 12-FEB-14

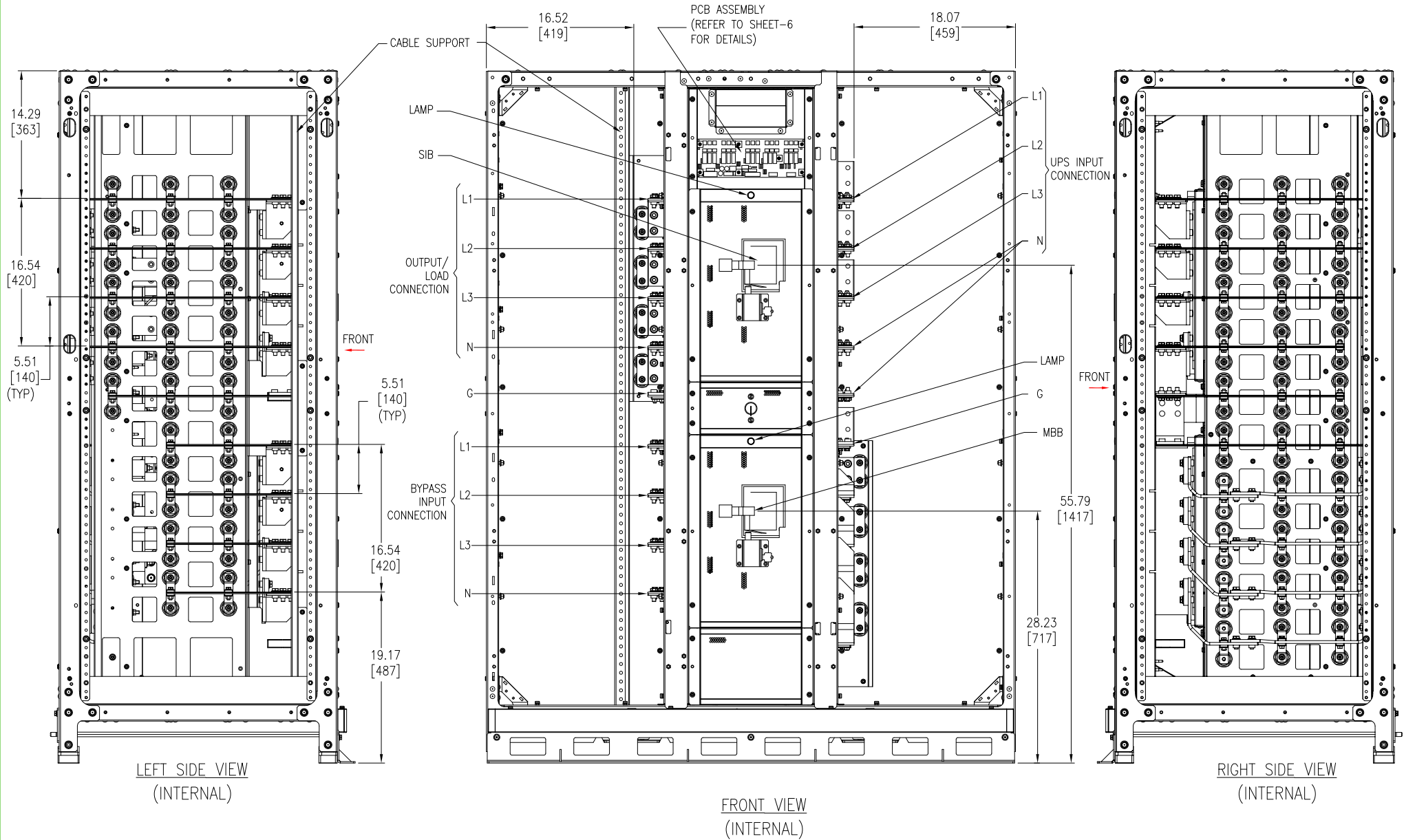
APPROVED BY: M PAULSEN 12-FEB-14

REV. 1

THIRD

ANGLE

PROJECTION



NOTES:

1. INSTALLATION SHALL COMPLY WITH ALL APPLICABLE NATIONAL, STATE AND LOCAL CODES.
2. REFER TO PRODUCT DOCUMENTATION FOR ADDITIONAL DETAILS PRIOR TO INSTALLATION AND SITE PREPARATION WORK.
3. ALL DIMENSIONS ARE IN INCHES [MILLIMETERS].
4. SOME STRUCTURAL DETAILS HAVE BEEN OMITTED FOR THE PURPOSE OF CLARITY.

THIS DRAWING AND SPECIFICATIONS HEREIN ARE THE PROPERTY OF SCHNEIDER ELECTRIC AND SHALL NOT BE COPIED, REPRODUCED OR USED IN WHOLE OR IN PART, AS THE BASIS FOR THE MANUFACTURE OR SALE OF ITEMS WITHOUT WRITTEN PERMISSION FROM SCHNEIDER ELECTRIC. THIS DRAWING IS BASED UPON LATEST AVAILABLE INFORMATION AND IS SUBJECT TO CHANGE WITHOUT NOTICE.



TITLE: Galaxy VM
SYSTEM BYPASS CABINET 675K
Input: 480V, 3PH, 40-70Hz
Output: 480V, 3PH, 60Hz
INTERNAL VIEWS

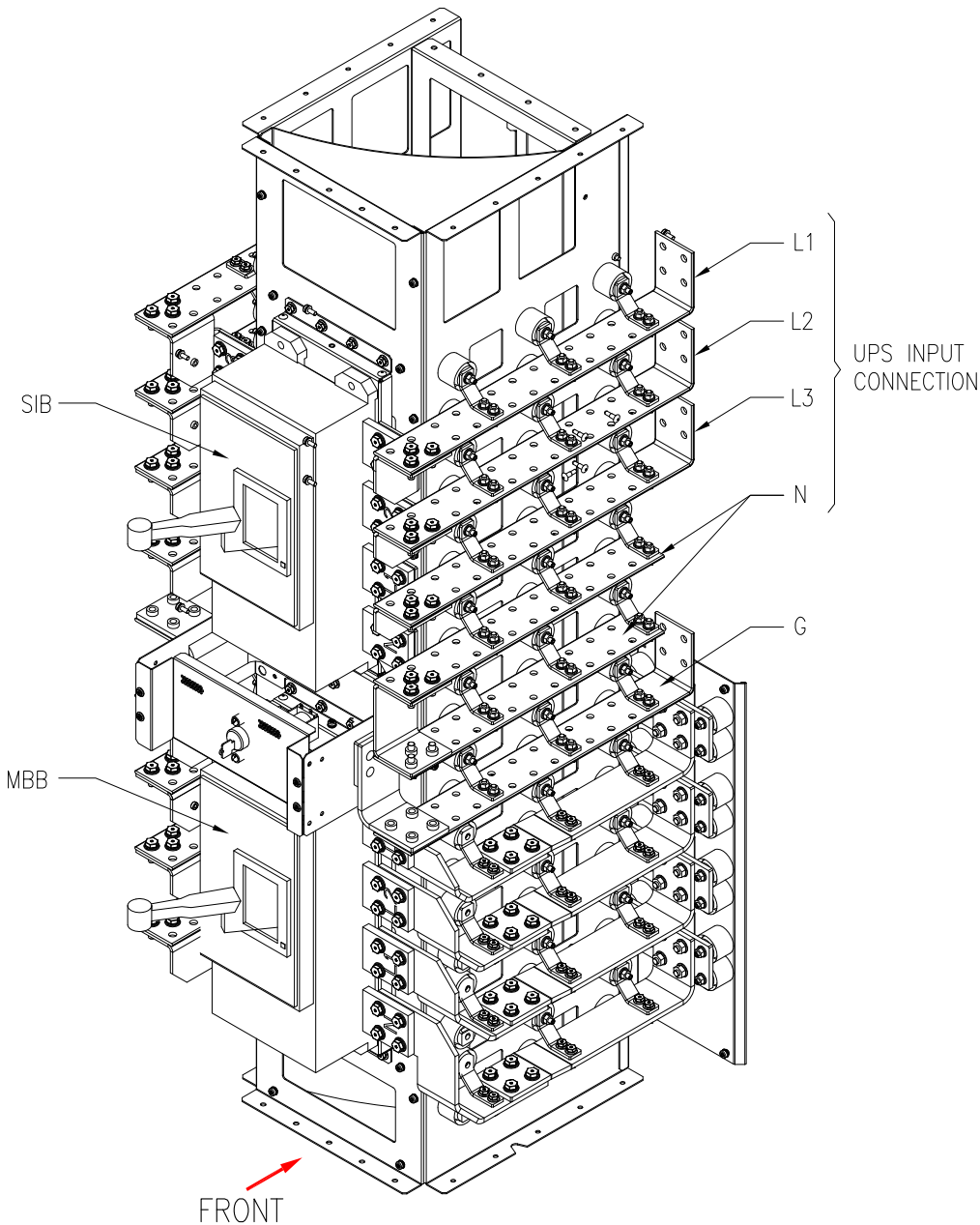
PROJECT: DRAWINGS SHEET 5 OF 7

DWG NO: GVMSBC675KG **REV.** 2

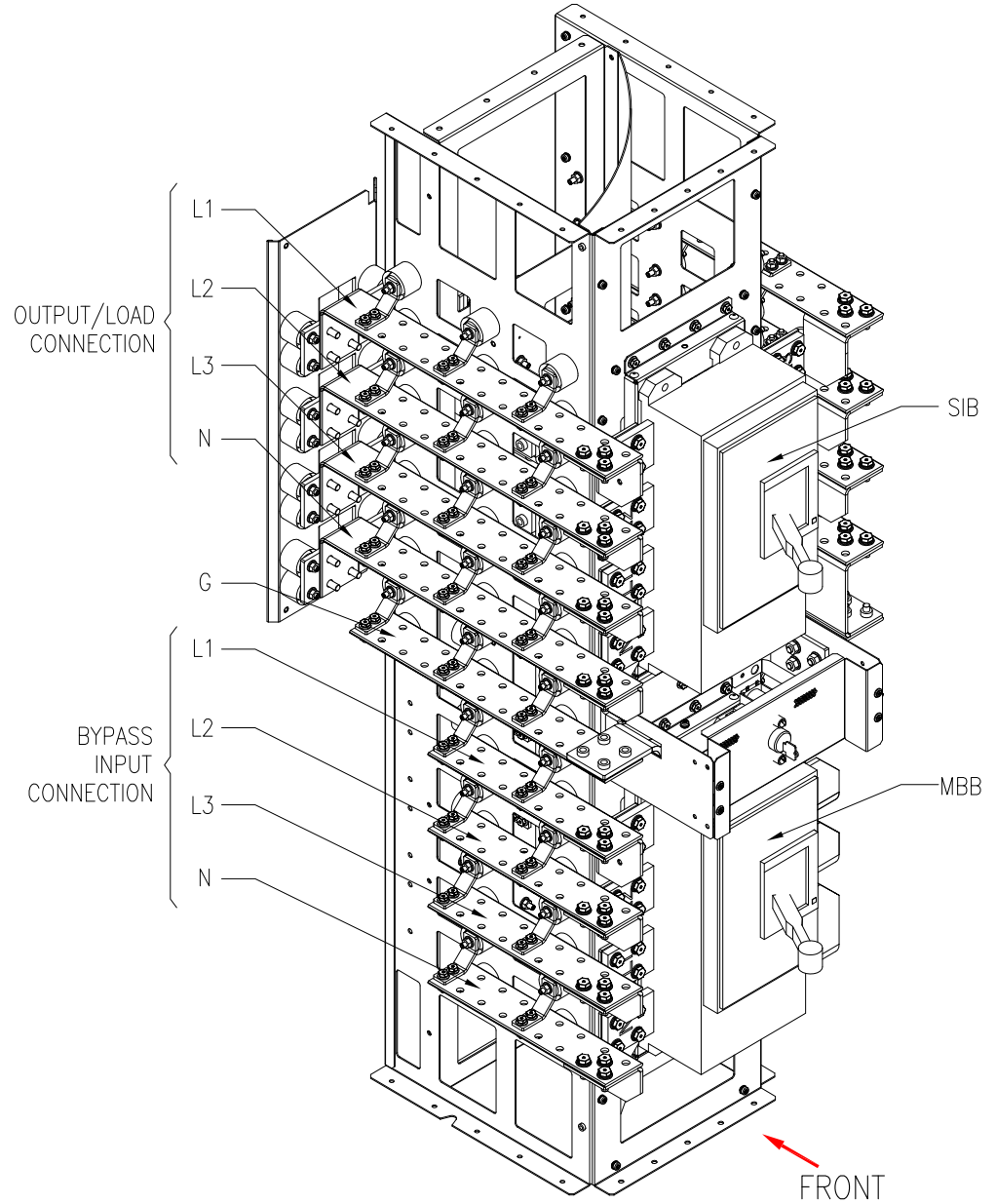
DRAWN BY: JAYAPRAKASH/BALA 30-OCT-14 **THIRD**

ENGINEER: Z WILLIAM 31-OCT-14 **ANGLE**

APPROVED BY: M PAULSEN 31-OCT-14 **PROJECTION**



BUSBAR DETAILS ISOMETRIC VIEW



BUSBAR DETAILS ISOMETRIC VIEW

- NOTES:**
1. INSTALLATION SHALL COMPLY WITH ALL APPLICABLE NATIONAL, STATE AND LOCAL CODES.
 2. REFER TO PRODUCT DOCUMENTATION FOR ADDITIONAL DETAILS PRIOR TO INSTALLATION AND SITE PREPARATION WORK.
 3. SOME STRUCTURAL DETAILS HAVE BEEN OMITTED FOR THE PURPOSE OF CLARITY.

THIS DRAWING AND SPECIFICATIONS HEREIN ARE THE PROPERTY OF SCHNEIDER ELECTRIC AND SHALL NOT BE COPIED, REPRODUCED OR USED IN WHOLE OR IN PART, AS THE BASIS FOR THE MANUFACTURE OR SALE OF ITEMS WITHOUT WRITTEN PERMISSION FROM SCHNEIDER ELECTRIC. THIS DRAWING IS BASED UPON LATEST AVAILABLE INFORMATION AND IS SUBJECT TO CHANGE WITHOUT NOTICE.



TITLE: Galaxy VM
SYSTEM BYPASS CABINET 675K
Input: 480V, 3PH, 40-70Hz
Output: 480V, 3PH, 60Hz
BUSBAR DETAILS

PROJECT: DRAWINGS SHEET 6 OF 7

DWG NO: GVMSBC675KG **REV.** 2

DRAWN BY: JAYAPRAKASH/BALA 30-OCT-14

ENGINEER: Z WILLIAM 31-OCT-14

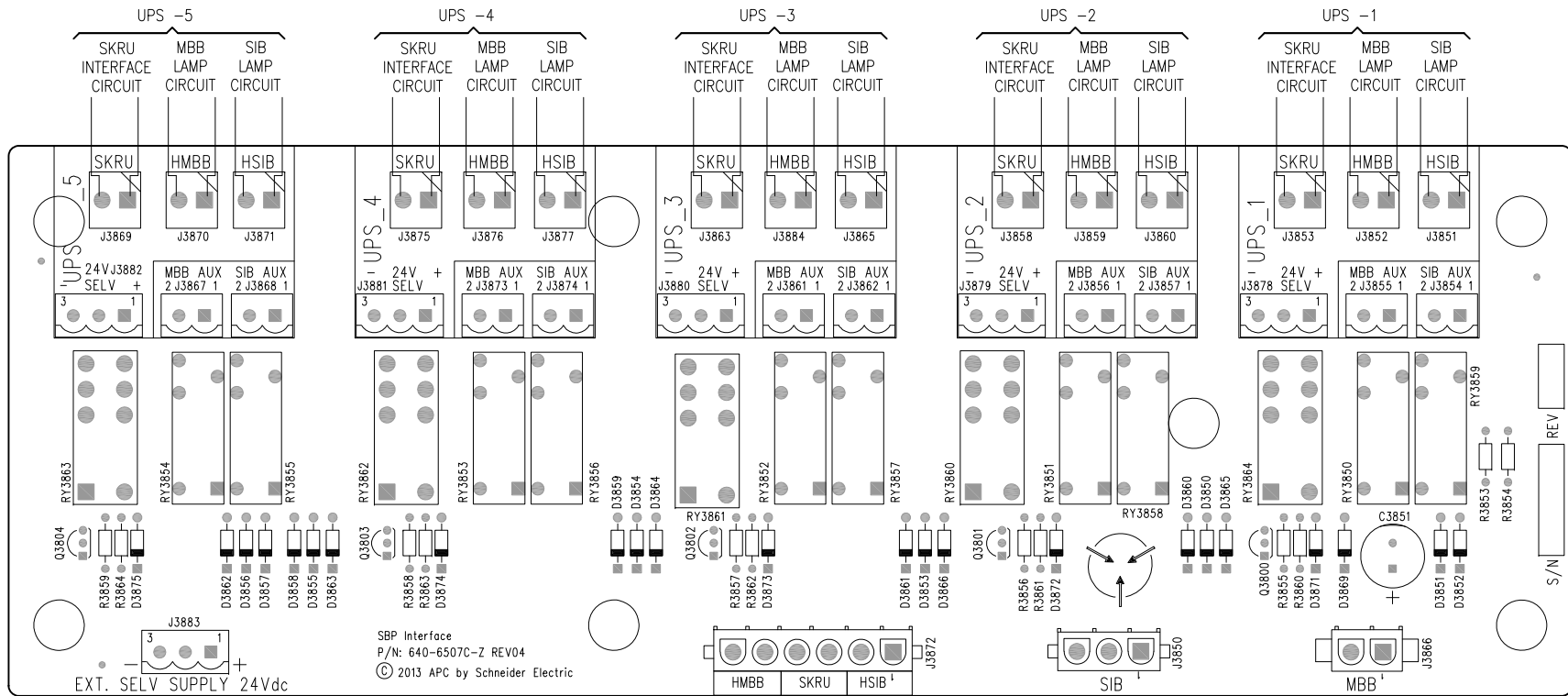
APPROVED BY: M PAULSEN 31-OCT-14

THIRD

ANGLE

PROJECTION

INTERFACE PCB DETAILS



NOTES:

1. INSTALLATION SHALL COMPLY WITH ALL APPLICABLE NATIONAL, STATE AND LOCAL CODES.
2. REFER TO PRODUCT DOCUMENTATION FOR ADDITIONAL DETAILS PRIOR TO INSTALLATION AND SITE PREPARATION WORK.

THIS DRAWING AND SPECIFICATIONS HEREIN ARE THE PROPERTY OF SCHNEIDER ELECTRIC AND SHALL NOT BE COPIED, REPRODUCED OR USED IN WHOLE OR IN PART, AS THE BASIS FOR THE MANUFACTURE OR SALE OF ITEMS WITHOUT WRITTEN PERMISSION FROM SCHNEIDER ELECTRIC. THIS DRAWING IS BASED UPON LATEST AVAILABLE INFORMATION AND IS SUBJECT TO CHANGE WITHOUT NOTICE.

Schneider Electric

TITLE: Galaxy VM
SYSTEM BYPASS CABINET 675K
Input: 480V, 3PH, 40-70Hz
Output: 480V, 3PH, 60Hz
INTERFACE PCB DETAILS

PROJECT: DRAWINGS **SHEET 7 OF 7**

DWG NO: GVMSBC675KG **REV.** 2

DRAWN BY: JAYAPRAKASH/BALA 31-OCT-14 **THIRD**

ENGINEER: Z WILLIAM 31-OCT-14 **ANGLE**

APPROVED BY: M PAULSEN 31-OCT-14 **PROJECTION**