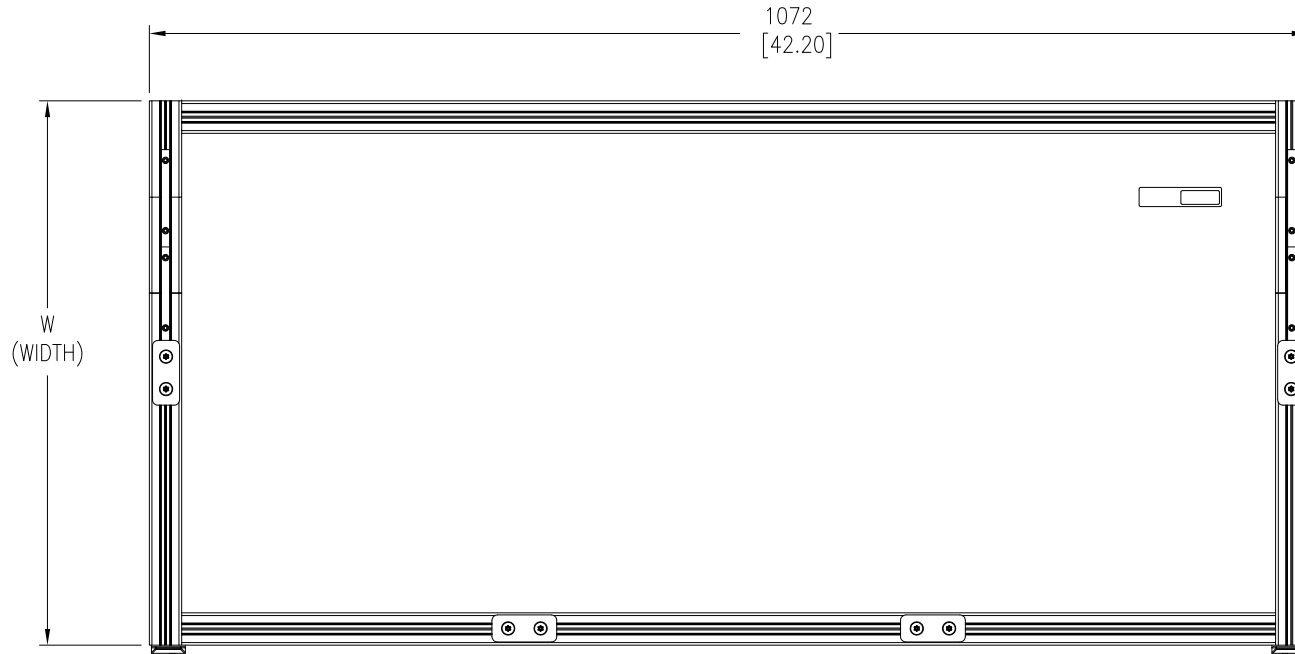


ACDC2303-2310

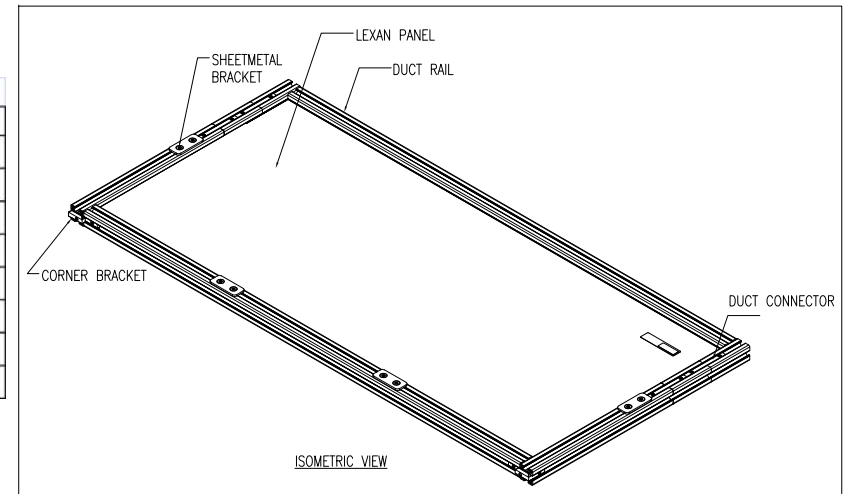


FRONT VIEW

LEFT SIDE VIEW



TOP VIEW



ISOMETRIC VIEW

Duct Panel Configuration Details					
SKU	Description	W (Width) mm [inch]		Weight, kg [lbs]	
ACDC2303	Duct Panel - 1012mm (40in) W x up to 787mm (31in) H	503	[19.8]	3.99	[8.77]
ACDC2305	Duct Panel - 1012mm (40in) W x up to 1041mm (41in) H	770	[30.33]	4.91	[10.80]
ACDC2307	Duct Panel - 1012mm (40in) W x up to 1270mm (50in) H	1008	[39.69]	5.64	[12.41]
ACDC2309	Duct Panel - 1012mm (40in) W x up to 1524mm (60in) H	1258	[49.51]	6.41	[14.11]
ACDC2304	Duct Panel - 1012mm (40in) W x up to 787mm (31in) H - V0	503	[19.8]	4.71	[10.37]
ACDC2306	Duct Panel - 1012mm (40in) W x up to 1041mm (41in) H - V0	770	[30.33]	6.06	[13.33]
ACDC2308	Duct Panel - 1012mm (40in) W x up to 1270mm (50in) H - V0	1008	[39.69]	7.16	[15.76]
ACDC2310	Duct Panel - 1012mm (40in) W x up to 1524mm (60in) H - V0	1258	[49.51]	8.33	[18.32]

NOTES:

1. COMPLY WITH ALL APPLICABLE NATIONAL AND LOCAL ELECTRICAL REGULATIONS.
2. REFER TO PRODUCT DOCUMENTATION FOR ADDITIONAL DETAILS PRIOR TO INSTALLATION AND SITE PREPARATION WORK.
3. ALL DIMENSIONS ARE IN MILLIMETERS [INCHES].
4. NET WEIGHT - REFER TO THE TABLE

THIS DRAWING AND SPECIFICATIONS HEREIN ARE THE PROPERTY OF SCHNEIDER ELECTRIC AND SHALL NOT BE COPIED, REPRODUCED OR USED IN WHOLE OR IN PART, AS THE BASIS FOR THE MANUFACTURE OR SALE OF ITEMS WITHOUT WRITTEN PERMISSION FROM SCHNEIDER ELECTRIC. THIS DRAWING IS BASED UPON LATEST AVAILABLE INFORMATION AND IS SUBJECT TO CHANGE WITHOUT NOTICE.

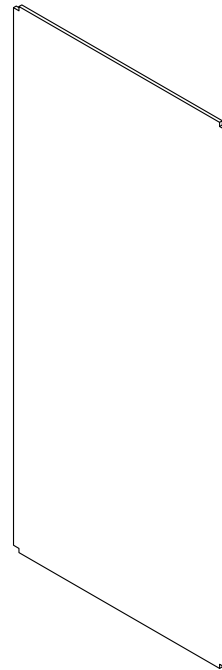
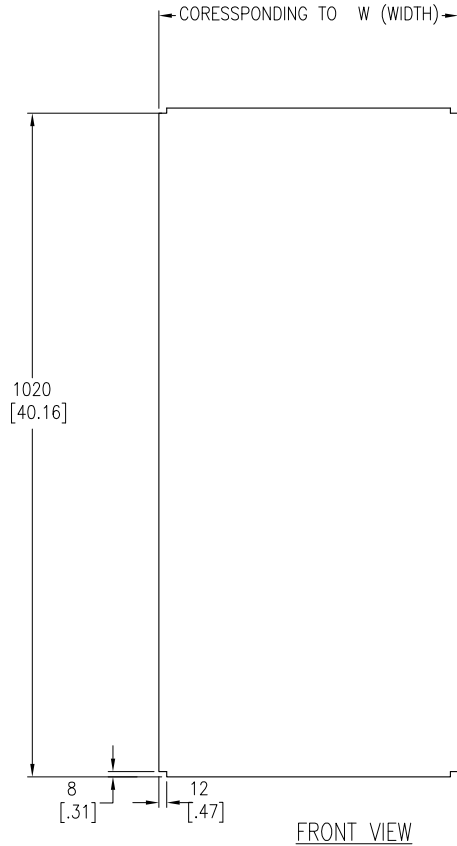


TITLE:  
Eco-Aisle (TM) Aisle Containment System  
DUCT PANEL  
ASSEMBLY

PROJECT: SUBMITTAL DRAWINGS SHEET 1 OF 3

DWG NO:	ACDC2303-2310	REV.	0
DRAWN BY:	K.NAGENDRA	08-JUL-13	FIRST
ENGINEER:	RUSTIN SHI/MARK MENG	08-JUL-13	ANGLE
APPROVED BY:	AARON GRAFF	08-JUL-13	PROJ

PANEL RIBBED LEXAN 6mm/PANEL SOLID LEXAN 2.36mm

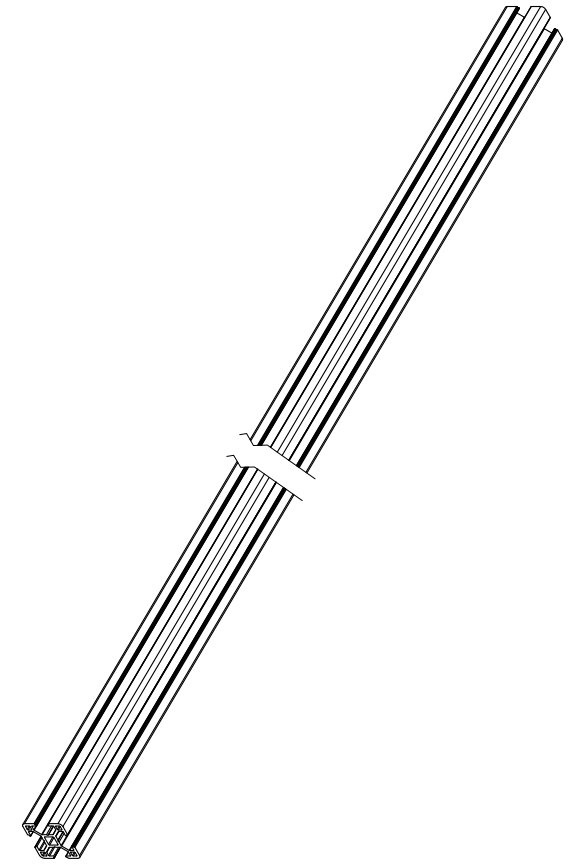
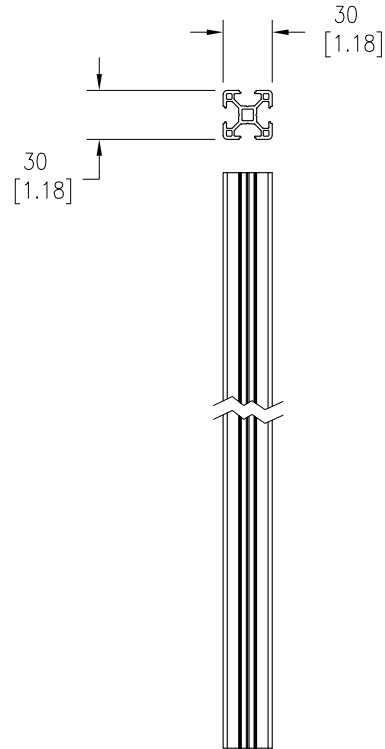


ISOMETRIC VIEW



DUCT SYSTEM RAIL

ACDC2303-2310



ISOMETRIC VIEW

NOTES:

1. COMPLY WITH ALL APPLICABLE NATIONAL AND LOCAL ELECTRICAL REGULATIONS.
2. REFER TO PRODUCT DOCUMENTATION FOR ADDITIONAL DETAILS PRIOR TO INSTALLATION AND SITE PREPARATION WORK.
3. ALL DIMENSIONS ARE IN MILLIMETERS [INCHES].

THIS DRAWING AND SPECIFICATIONS HEREIN ARE THE PROPERTY OF SCHNEIDER ELECTRIC AND SHALL NOT BE COPIED, REPRODUCED OR USED IN WHOLE OR IN PART, AS THE BASIS FOR THE MANUFACTURE OR SALE OF ITEMS WITHOUT WRITTEN PERMISSION FROM SCHNEIDER ELECTRIC. THIS DRAWING IS BASED UPON LATEST AVAILABLE INFORMATION AND IS SUBJECT TO CHANGE WITHOUT NOTICE.

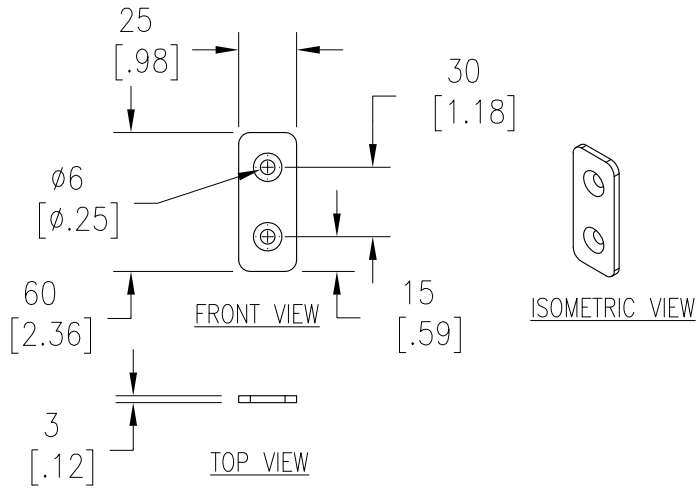


TITLE:  
Eco-Aisle (TM) Aisle Containment System  
DUCT PANEL  
LEXAN PANEL & DUCT RAIL

PROJECT: SUBMITTAL DRAWINGS SHEET 2 OF 3

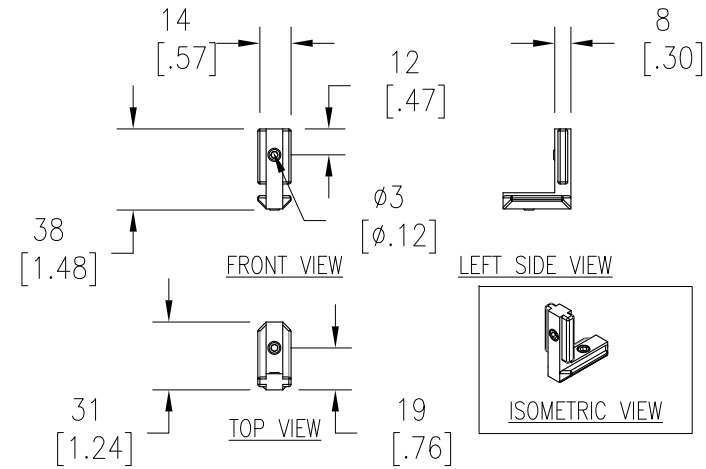
DWG NO:	ACDC2303-2310	REV.	0
DRAWN BY:	K.NAGENDRA	08-JUL-13	FIRST
ENGINEER:	RUSTIN SHI/MARK MENG	08-JUL-13	ANGLE
APPROVED BY:	AARON GRAFF	08-JUL-13	PROJ

### DUCT RAIL SHEETMETAL BRACKET

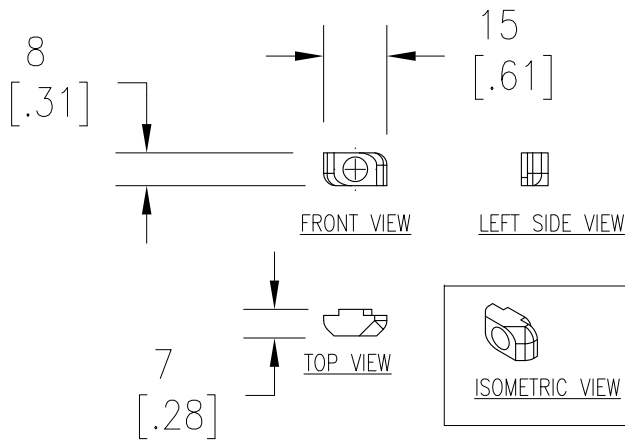


### ACDC2303-2310

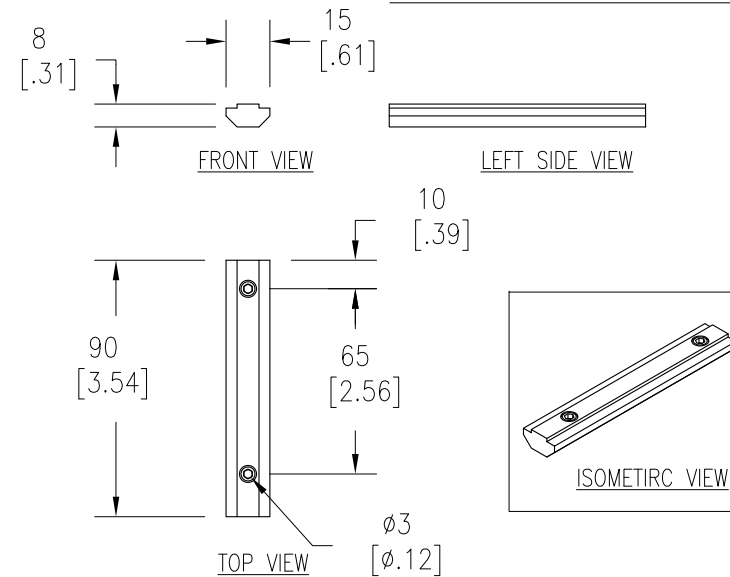
### DUCT CORNER BRACKET



### NUT M6 HAMMER HEAD STEEL



### DUCT CONNECTOR-90mm



**NOTES:**

1. COMPLY WITH ALL APPLICABLE NATIONAL AND LOCAL ELECTRICAL REGULATIONS.
2. REFER TO PRODUCT DOCUMENTATION FOR ADDITIONAL DETAILS PRIOR TO INSTALLATION AND SITE PREPARATION WORK.
3. ALL DIMENSIONS ARE IN MILLIMETERS [INCHES].

THIS DRAWING AND SPECIFICATIONS HEREIN ARE THE PROPERTY OF SCHNEIDER ELECTRIC AND SHALL NOT BE COPIED, REPRODUCED OR USED IN WHOLE OR IN PART, AS THE BASIS FOR THE MANUFACTURE OR SALE OF ITEMS WITHOUT WRITTEN PERMISSION FROM SCHNEIDER ELECTRIC. THIS DRAWING IS BASED UPON LATEST AVAILABLE INFORMATION AND IS SUBJECT TO CHANGE WITHOUT NOTICE.



TITLE:  
Eco-Aisle (TM) Aisle Containment System  
DUCT PANEL  
PART DETAILS  
PROJECT: SUBMITTAL DRAWINGS SHEET 3 OF 3

DWG NO:	ACDC2303-2310	REV.	0
DRAWN BY:	K.NAGENDRA	08-JUL-13	FIRST
ENGINEER:	RUSTIN SHI/MARK MENG	08-JUL-13	ANGLE
APPROVED BY:	AARON GRAFF	08-JUL-13	PROJ