
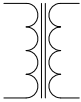


CONFIGURABLE POWER DISTRIBUTION, InfraStruxure PDU 150kVA 480V/208V

Sheet No.	Component /Detail	Description
1	Drawing Guide	InfraStruxure PDU 150kVA 480V/208V
2	Specification	InfraStruxure PDU 150kVA 480V/208V
3	General Arrangement	InfraStruxure PDU 150kVA 480V/208V
4	Top and Bottom View	InfraStruxure PDU 150kVA 480V/208V
5	Isometric View	InfraStruxure PDU 150kVA 480V/208V
6	Anchoring details	InfraStruxure PDU 150kVA 480V/208V
7	Internal Views	InfraStruxure PDU 150kVA 480V/208V
8	NMC and Display Interface	InfraStruxure PDU 150kVA 480V/208V
9	Five line Diagram	InfraStruxure PDU 150kVA 480V/208V
10-12	Whips	InfraStruxure PDU 150kVA 480V/208V

LEGEND	
SYMBOL	DESCRIPTION
	CIRCUIT BREAKER
	TRANSFORMER

THIS DRAWING AND SPECIFICATIONS HEREIN ARE THE PROPERTY OF SCHNEIDER ELECTRIC AND SHALL NOT BE COPIED, REPRODUCED OR USED IN WHOLE OR IN PART, AS THE BASIS FOR THE MANUFACTURE OR SALE OF ITEMS WITHOUT WRITTEN PERMISSION FROM SCHNEIDER ELECTRIC. THIS DRAWING IS BASED UPON LATEST AVAILABLE INFORMATION AND IS SUBJECT TO CHANGE WITHOUT NOTICE.



TITLE: CONFIGURABLE POWER DISTRIBUTION
 InfraStruxure PDU 150kVA
 Input: 480V, 3PH, 60Hz
 Output: 208V, 3PH, 60Hz
 DRAWING GUIDE

PROJECT: DRAWINGS SHEET 1 OF 12

DWG NO:	PDPB150G6F	REV.	0
DRAWN BY:	JAYAPRAKASH	16-APR-13	ANGLE
ENGINEER:	FARRUKH SYED, J. RATHJEN	13-MAY-13	PROJECTION
APPROVED BY:	AL WARNER	13-MAY-13	N/A

InfraStruxure POWER DISTRIBUTION UNIT - SPECIFICATION

	150kW max	De-rated to use with PX100 and MBP
1. AC Input		
1.1 Nominal voltage (V)	480	480
1.2 Nominal Input current (A)	186	165
1.3 Input frequency (Hz)	60	60
1.4 Max. short circuit withstand level (kA)	65	65
1.5 Main upstream current protection (A)	250	225
2. AC Output		
2.1 Nominal voltage (V)	208	208
2.2 Nominal output current (A)	416	278
2.3 Output frequency (Hz)	Same as Input	
2.4 Output current protection (A)	15 to 150	
2.5 Subfeed output (A)	125 to 400	125 to 250
2.6 Distribution breaker size (A)	Refer to sheet 9	
2.7 Rated conditional short-circuit current (Icc)	10kA	
3. Environment		
3.1 Operating temperature	32°F to 104°F (0°C to 40°C)	
3.2 Storage temperature	13°F to 149°F (-25°C to 65°C)	
3.3 Efficiency at full (100%) load	97.70%	
3.4 The assembly must be protected from water and conductive contaminants		
4. Enclosure		
4.1 The assembly material is steel with surface coating		
4.2 The assembly is made for indoor floor installation		
5. Connections		
5.1 Incoming and outgoing cables to be connected to terminals in component section		
5.2 Input cable entry is through top or bottom of the unit		
5.3 Output cable entry is through the top of the unit		

2

NOTES:

1. INSTALLATION SHALL COMPLY WITH ALL APPLICABLE NATIONAL, STATE AND LOCAL CODES.
2. REFER TO PRODUCT DOCUMENTATION FOR ADDITIONAL DETAILS PRIOR TO INSTALLATION AND SITE PREPARATION WORK.

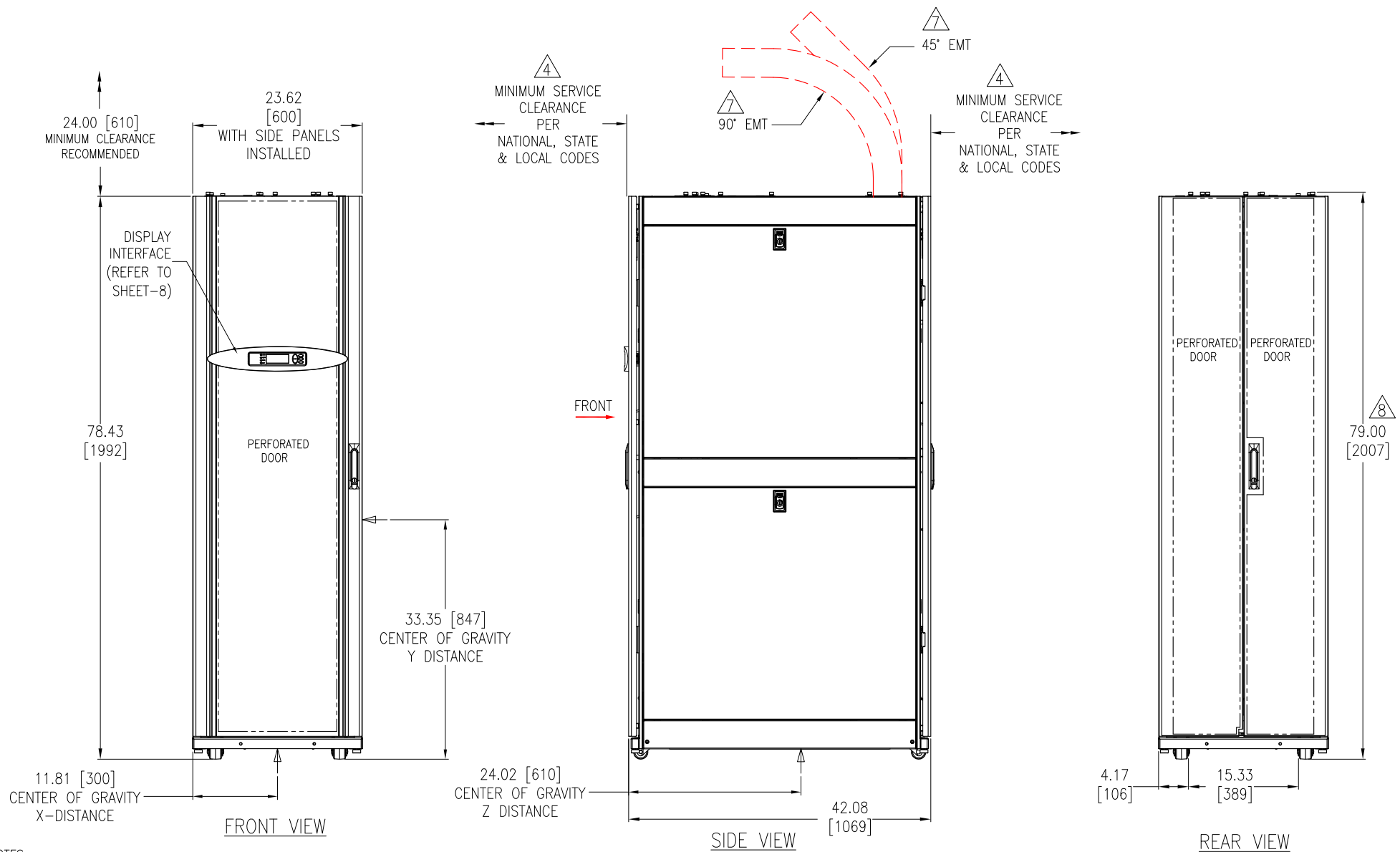
THIS DRAWING AND SPECIFICATIONS HEREIN ARE THE PROPERTY OF SCHNEIDER ELECTRIC AND SHALL NOT BE COPIED, REPRODUCED OR USED IN WHOLE OR IN PART, AS THE BASIS FOR THE MANUFACTURE OR SALE OF ITEMS WITHOUT WRITTEN PERMISSION FROM SCHNEIDER ELECTRIC. THIS DRAWING IS BASED UPON LATEST AVAILABLE INFORMATION AND IS SUBJECT TO CHANGE WITHOUT NOTICE.

Schneider
Electric

TITLE: CONFIGURABLE POWER DISTRIBUTION
InfraStruxure PDU 150kVA
Input: 480V, 3PH, 60Hz
Output: 208V, 3PH, 60Hz
SPECIFICATIONS

PROJECT: DRAWINGS SHEET 2 OF 12

DWG NO:	PDPB150G6F	REV.	0
DRAWN BY:	JAYAPRAKASH	16-APR-13	ANGLE
ENGINEER:	FARRUKH SYED, J. RATHJEN	13-MAY-13	PROJECTION
APPROVED BY:	AL WARNER	13-MAY-13	N/A



NOTES:

1. INSTALLATION SHALL COMPLY WITH ALL APPLICABLE NATIONAL, STATE AND LOCAL CODES.
2. REFER TO [PRODUCT DOCUMENTATION](#) FOR ADDITIONAL DETAILS PRIOR TO INSTALLATION AND SITE PREPARATION WORK.
3. ALL DIMENSIONS ARE IN INCHES [MILLIMETERS].
- △4. FRONT AND REAR ACCESS ARE REQUIRED FOR SERVICE.
ENSURE MINIMUM 48 [1220] LATERAL CLEARANCE FROM EITHER SIDE OF THE REAR OF THE UNIT FOR SERVICE.
MINIMUM RECOMMENDED FRONT CLEARANCE IS 42 [1067] AND REAR CLEARANCE IS 36 [915].
5. INPUT POWER CABLE ENTRY IS FROM TOP OR BOTTOM OF THE UNIT.
6. THE WEIGHT OF THE UNIT WITHOUT WHIPS IS 1800 LB [815 KG]. THE ESTIMATED MAXIMUM WEIGHT OF THE UNIT WITH WHIPS IS 2300 lb (1045 kg).
- △7. 4" GENERIC EMT 45° OR 90° PROVIDED BY OTHERS.
THIS VIEW SHOWS TWO OF THE WAYS, SUBFEED OUTPUT POWER CONDUIT CLEARS THE OVERHEAD COOLING UNITS ACOA500 & ACOA501, IF PRESENT.
- △8. MAXIMUM HEIGHT OF THE UNIT INCLUDES TOP PROTRUSIONS AND CAPTIVE FASTENERS.
9. FLOOR LOADING: 333 lb/ft² [1626 kg/meter²].
10. COLOR: BLACK.

THIS DRAWING AND SPECIFICATIONS HEREIN ARE THE PROPERTY OF SCHNEIDER ELECTRIC AND SHALL NOT BE COPIED, REPRODUCED OR USED IN WHOLE OR IN PART, AS THE BASIS FOR THE MANUFACTURE OR SALE OF ITEMS WITHOUT WRITTEN PERMISSION FROM SCHNEIDER ELECTRIC. THIS DRAWING IS BASED UPON LATEST AVAILABLE INFORMATION AND IS SUBJECT TO CHANGE WITHOUT NOTICE.



TITLE: CONFIGURABLE POWER DISTRIBUTION
 InfraStruxure PDU 150kVA
 Input: 480V, 3PH, 60Hz
 Output: 208V, 3PH, 60Hz
 GENERAL ARRANGEMENT

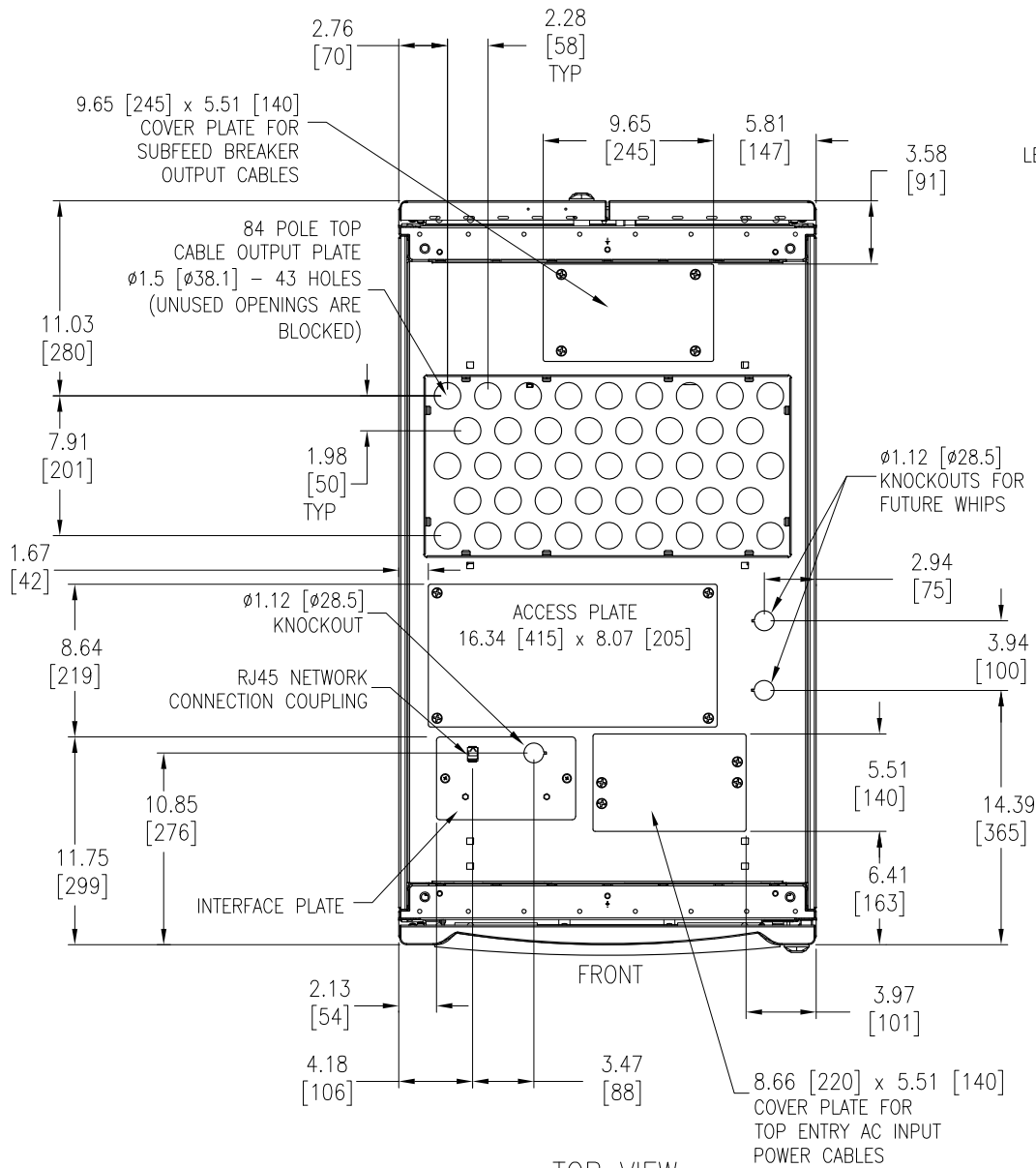
PROJECT: DRAWINGS SHEET 3 OF 12

DWG NO: PDPB150G6F REV. 0

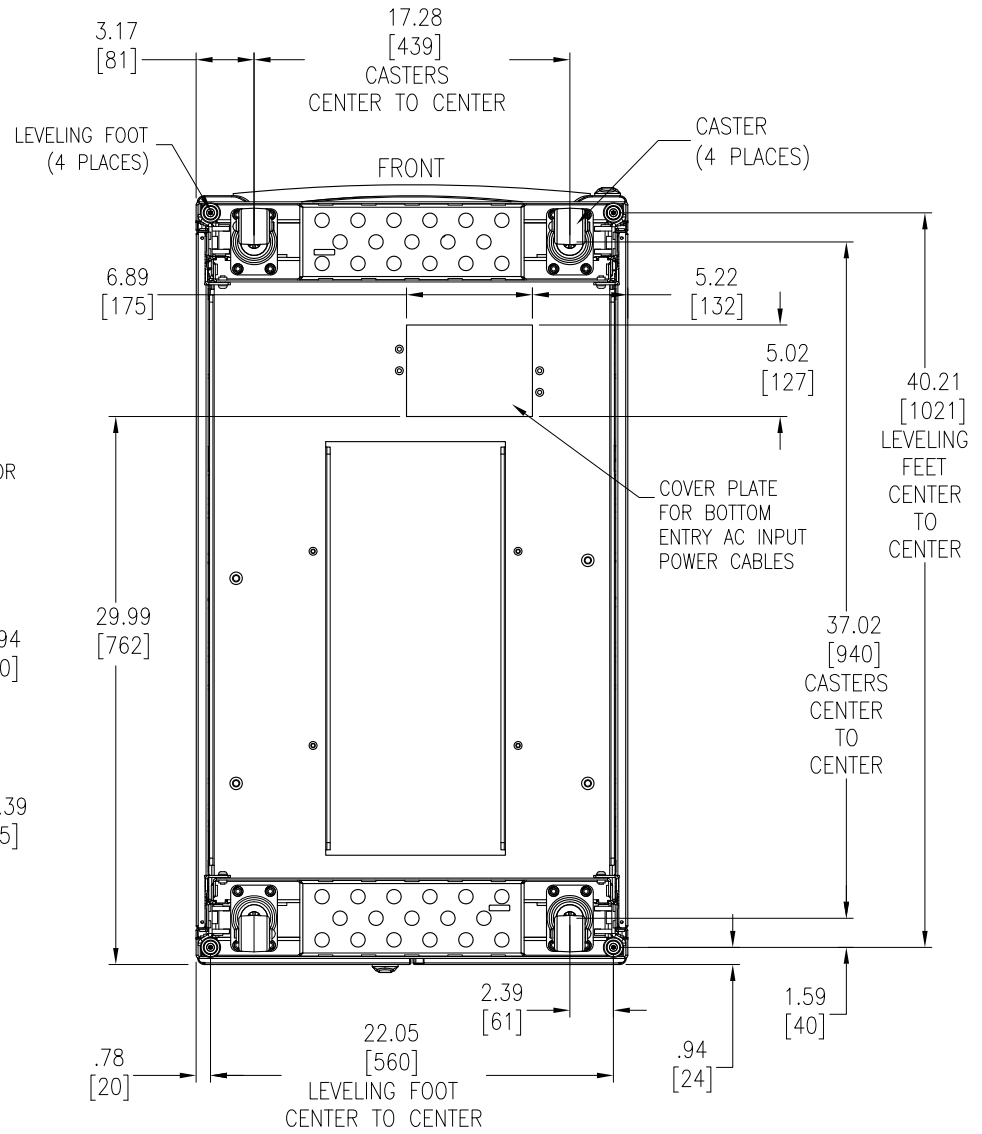
DRAWN BY: JAYAPRAKASH 16-APR-13 THIRD

ENGINEER: FARRUKH SYED, J. RATHJEN 13-MAY-13 ANGLE

APPROVED BY: AL WARNER 13-MAY-13 PROJECTION



TOP VIEW



BOTTOM VIEW

NOTES:

1. INSTALLATION SHALL COMPLY WITH ALL APPLICABLE NATIONAL, STATE AND LOCAL CODES.
2. REFER TO PRODUCT DOCUMENTATION FOR ADDITIONAL DETAILS PRIOR TO INSTALLATION AND SITE PREPARATION WORK.
3. ALL DIMENSIONS ARE IN INCHES [MILLIMETERS].

THIS DRAWING AND SPECIFICATIONS HEREIN ARE THE PROPERTY OF SCHNEIDER ELECTRIC AND SHALL NOT BE COPIED, REPRODUCED OR USED IN WHOLE OR IN PART, AS THE BASIS FOR THE MANUFACTURE OR SALE OF ITEMS WITHOUT WRITTEN PERMISSION FROM SCHNEIDER ELECTRIC. THIS DRAWING IS BASED UPON LATEST AVAILABLE INFORMATION AND IS SUBJECT TO CHANGE WITHOUT NOTICE.



TITLE: CONFIGURABLE POWER DISTRIBUTION
 InfraStruxure PDU 150kVA
 Input: 480V, 3PH, 60Hz
 Output: 208V, 3PH, 60Hz
 TOP & BOTTOM VIEWS

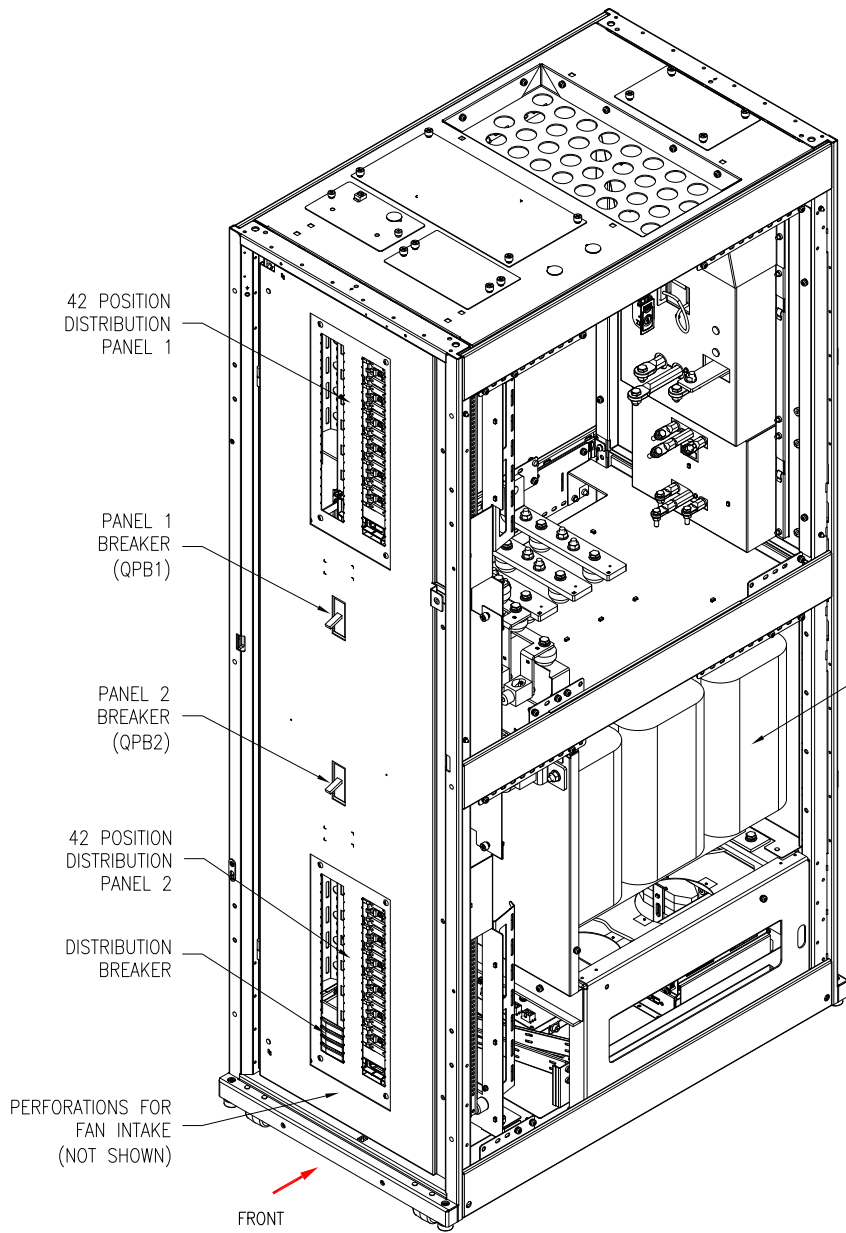
DWG NO: PDPB150G6F REV. 0

DRAWN BY: JAYAPRAKASH 16-APR-13 THIRD

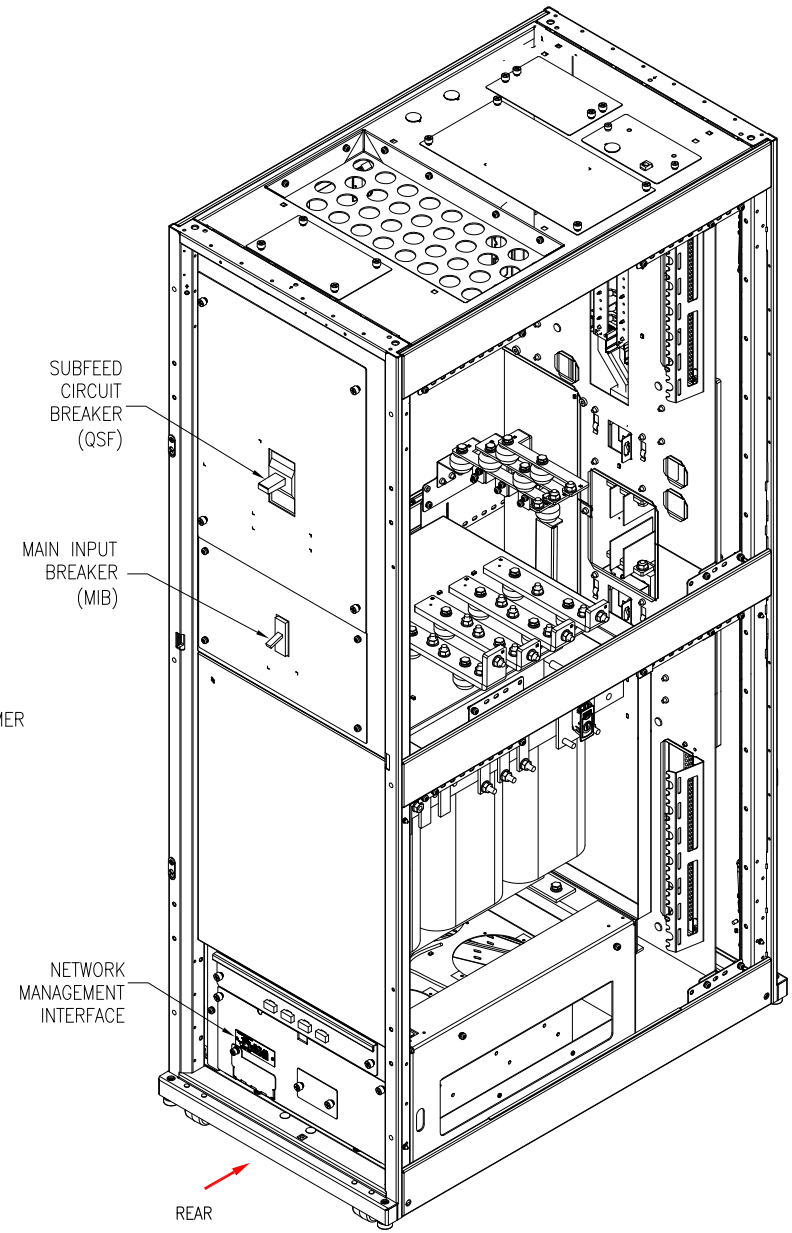
ENGINEER: FARRUKH SYED, J. RATHJEN 13-MAY-13 ANGLE

PROJECT: DRAWINGS SHEET 4 OF 12

APPROVED BY: AL WARNER 13-MAY-13 PROJECTION



ISOMETRIC VIEW
(FRONT, REAR DOORS & SIDE PANELS NOT SHOWN)



ISOMETRIC VIEW
(FRONT, REAR DOORS & SIDE PANELS NOT SHOWN)

NOTES:
 1. INSTALLATION SHALL COMPLY WITH ALL APPLICABLE NATIONAL, STATE AND LOCAL CODES.
 2. REFER TO PRODUCT DOCUMENTATION FOR ADDITIONAL DETAILS PRIOR TO INSTALLATION AND SITE PREPARATION WORK.

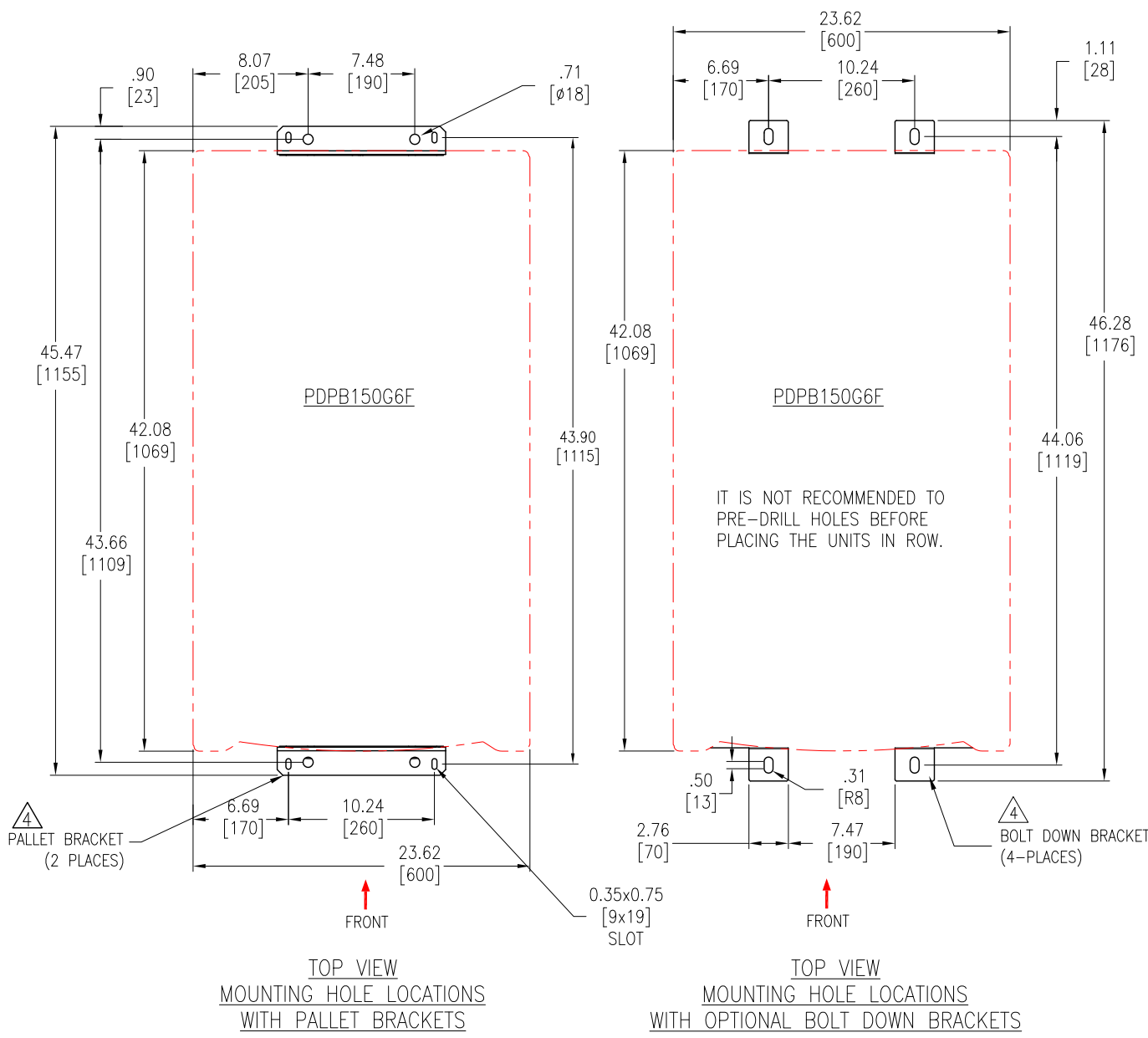
THIS DRAWING AND SPECIFICATIONS HEREIN ARE THE PROPERTY OF SCHNEIDER ELECTRIC AND SHALL NOT BE COPIED, REPRODUCED OR USED IN WHOLE OR IN PART, AS THE BASIS FOR THE MANUFACTURE OR SALE OF ITEMS WITHOUT WRITTEN PERMISSION FROM SCHNEIDER ELECTRIC. THIS DRAWING IS BASED UPON LATEST AVAILABLE INFORMATION AND IS SUBJECT TO CHANGE WITHOUT NOTICE.



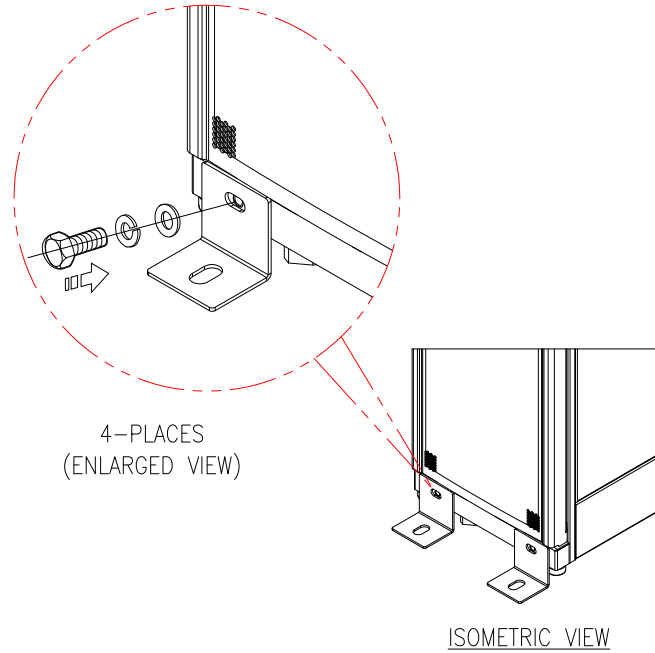
TITLE: CONFIGURABLE POWER DISTRIBUTION
 InfraStruxure PDU 150kVA
 Input: 480V, 3PH, 60Hz
 Output: 208V, 3PH, 60Hz
 ISOMETRIC VIEW
PROJECT: DRAWINGS **SHEET** 5 OF 12

DWG NO: PDPB150G6F
DRAWN BY: JAYAPRAKASH
ENGINEER: FARRUKH SYED, J. RATHJEN
APPROVED BY: AL WARNER

REV. 0
THIRD
ANGLE
PROJECTION



STABILIZING THE UNIT:
 TO PREVENT THE ENCLOSURE FROM MOVING FROM ITS FINAL LOCATION IF SHIPPING BRACKET IS NOT AVAILABLE, USE AR7701 (BOLT-DOWN KIT). ATTACH THE BRACKETS TO THE UNIT AS SHOWN. USE CODE COMPLIANT FASTENERS TO SECURE THE UNIT TO THE FLOOR.



NOTE:
 1. RECOMMENDED TORQUE IS 80-100 LBS-INCHES [9-11.3 N-m]

- NOTES:**
1. COMPLY WITH ALL APPLICABLE NATIONAL, STATE AND LOCAL CODES.
 2. REFER TO PRODUCT DOCUMENTATION FOR ADDITIONAL DETAILS PRIOR TO INSTALLATION AND SITE PREPARATION WORK.
 3. ALL DIMENSIONS ARE IN INCHES [MILLIMETERS].
 4. ANCHORING BRACKETS CAN BE INSTALLED AT FRONT AND BACK OF UNIT. ADEQUATE FRONT AND REAR CLEARANCE SHOULD BE PROVIDED IF THE UNIT IS TO BE ANCHORED. FOR RECOMMENDED CLEARANCE SEE NOTE 4 ON SHEET 3. USE CODE COMPLIANT FASTENERS TO SECURE UNIT TO THE FLOOR. NON-SEISMIC BOLT DOWN KIT (SKU # AR7701) IS OPTIONAL.

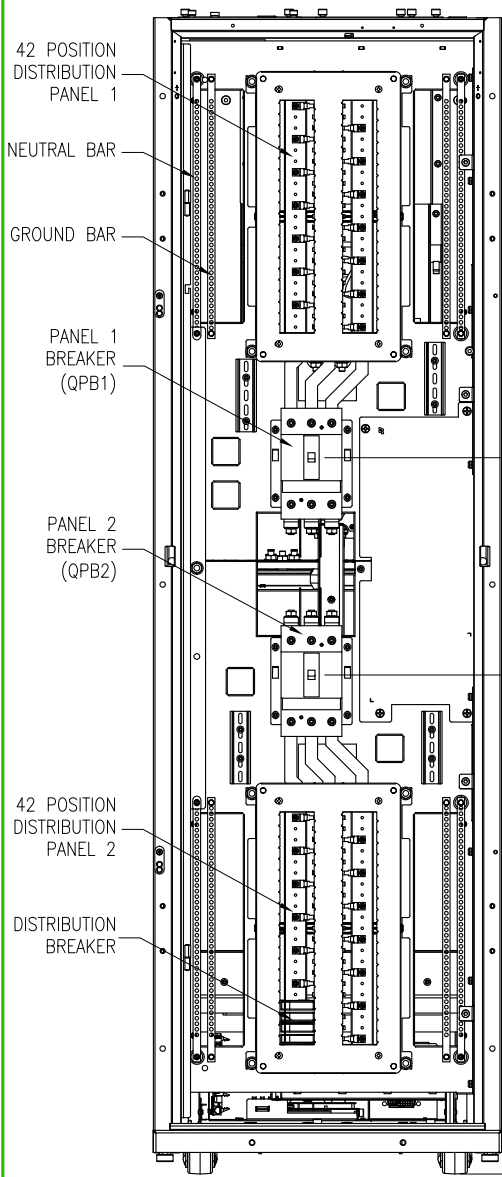
THIS DRAWING AND SPECIFICATIONS HEREIN ARE THE PROPERTY OF SCHNEIDER ELECTRIC AND SHALL NOT BE COPIED, REPRODUCED OR USED IN WHOLE OR IN PART, AS THE BASIS FOR THE MANUFACTURE OR SALE OF ITEMS WITHOUT WRITTEN PERMISSION FROM SCHNEIDER ELECTRIC. THIS DRAWING IS BASED UPON LATEST AVAILABLE INFORMATION AND IS SUBJECT TO CHANGE WITHOUT NOTICE.



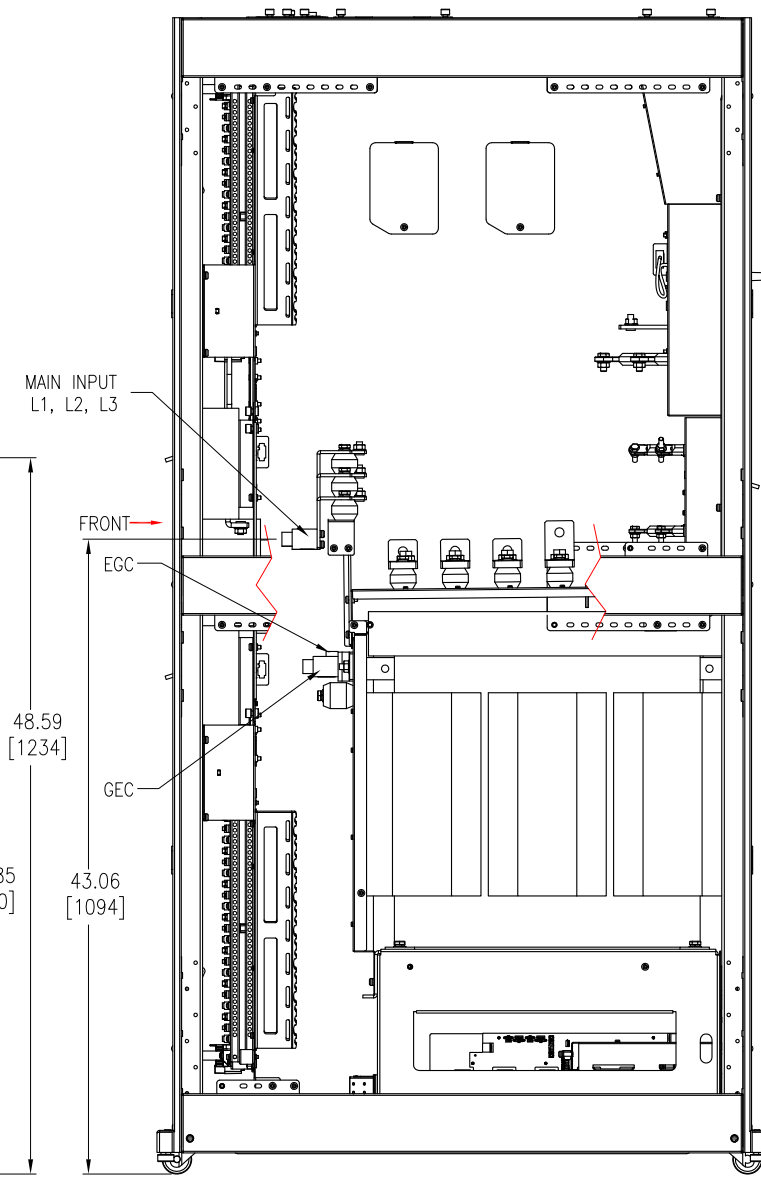
TITLE: CONFIGURABLE POWER DISTRIBUTION
 InfraStruxure PDU 150kVA
 Input: 480V, 3PH, 60Hz
 Output: 208V, 3PH, 60Hz
 ANCHORING DETAILS

PROJECT: DRAWINGS **SHEET** 6 OF 12

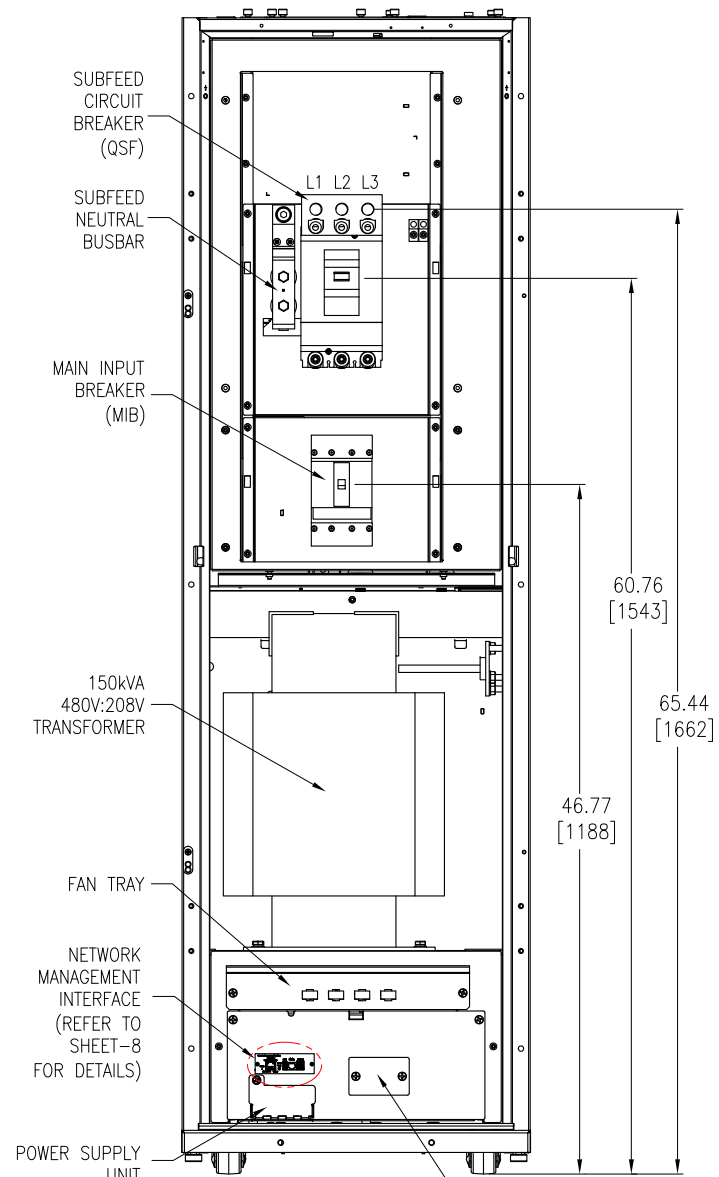
DWG NO:	PDPB150G6F		REV.	0
DRAWN BY:	JAYAPRAKASH	16-APR-13	THIRD	
ENGINEER:	FARRUKH SYED, J. RATHJEN	13-MAY-13	ANGLE	
APPROVED BY:	AL WARNER	13-MAY-13	PROJECTION	



FRONT VIEW
(INTERNAL)



RIGHT SIDE VIEW
(INTERNAL)



REAR VIEW
(INTERNAL)

48.59 [1234]

33.85 [860]

43.06 [1094]

60.76 [1543]

65.44 [1662]

46.77 [1188]

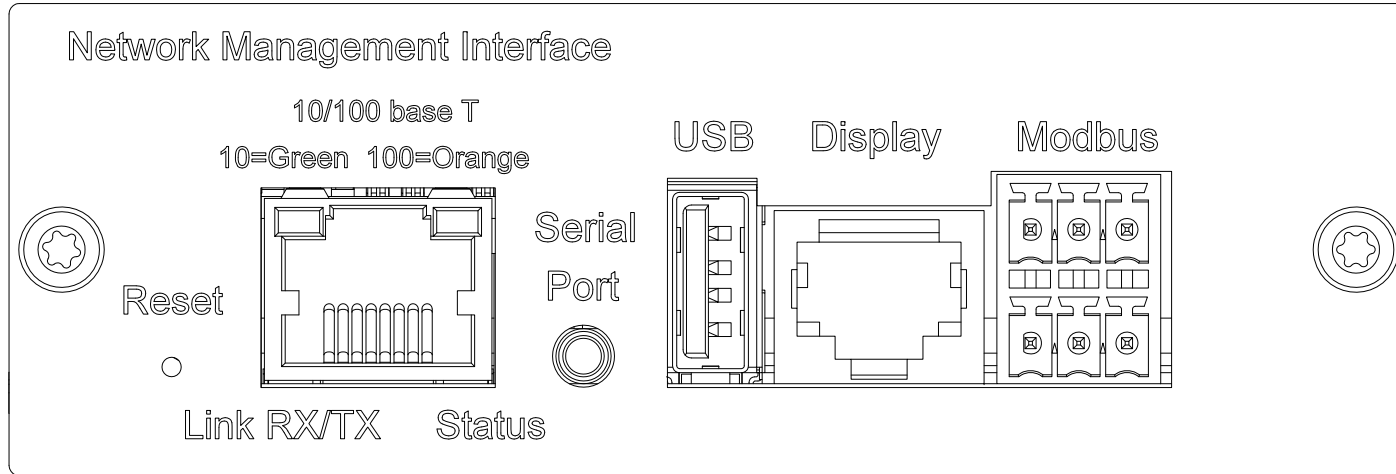
- NOTES:
1. INSTALLATION SHALL COMPLY WITH ALL APPLICABLE NATIONAL, STATE AND LOCAL CODES.
 2. REFER TO PRODUCT DOCUMENTATION FOR ADDITIONAL DETAILS. PRIOR TO INSTALLATION AND SITE PREPARATION WORK.
 3. ALL DIMENSIONS ARE IN INCHES [MILLIMETERS].
 4. SOME STRUCTURAL DETAILS HAVE BEEN OMITTED FOR THE PURPOSE OF CLARITY.

THIS DRAWING AND SPECIFICATIONS HEREIN ARE THE PROPERTY OF SCHNEIDER ELECTRIC AND SHALL NOT BE COPIED, REPRODUCED OR USED IN WHOLE OR IN PART, AS THE BASIS FOR THE MANUFACTURE OR SALE OF ITEMS WITHOUT WRITTEN PERMISSION FROM SCHNEIDER ELECTRIC. THIS DRAWING IS BASED UPON LATEST AVAILABLE INFORMATION AND IS SUBJECT TO CHANGE WITHOUT NOTICE.

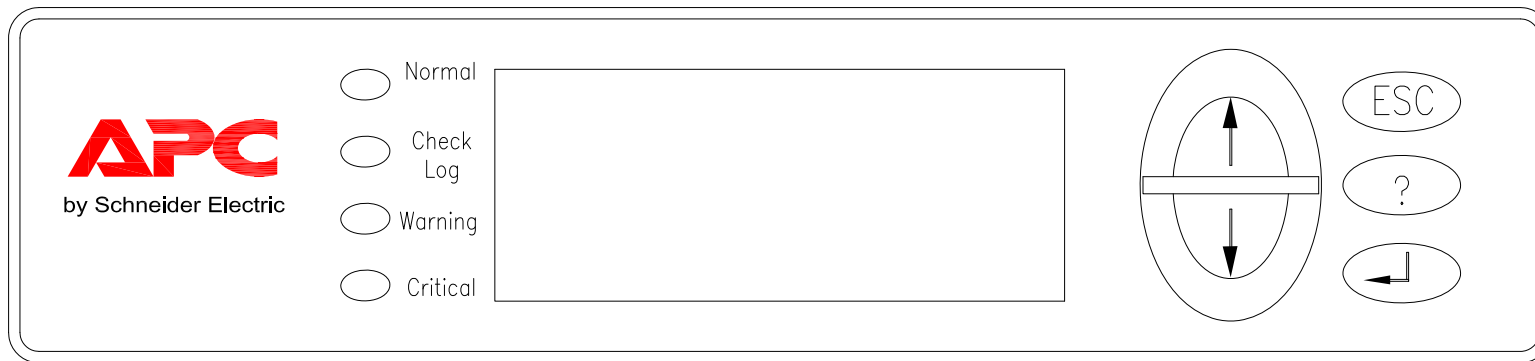


TITLE: CONFIGURABLE POWER DISTRIBUTION
InfraStruxure PDU 150kVA
Input: 480V, 3PH, 60Hz
Output: 208V, 3PH, 60Hz
INTERNAL VIEWS
PROJECT: DRAWINGS SHEET 7 OF 12

DWG NO:	PDPB150G6F		REV.	1
DRAWN BY:	JAYAPRAKASH	05-AUG-19	THIRD	
ENGINEER:	FARRUKH SYED, J. RATHJEN	05-AUG-19	ANGLE	
APPROVED BY:	AL WARNER	05-AUG-19	PROJECTION	



NETWORK MANAGEMENT INTERFACE



DISPLAY INTERFACE

NOTES:

1. INSTALLATION SHALL COMPLY WITH ALL APPLICABLE NATIONAL, STATE AND LOCAL CODES.
2. REFER TO PRODUCT DOCUMENTATION FOR ADDITIONAL DETAILS PRIOR TO INSTALLATION AND SITE PREPARATION WORK.

THIS DRAWING AND SPECIFICATIONS HEREIN ARE THE PROPERTY OF SCHNEIDER ELECTRIC AND SHALL NOT BE COPIED, REPRODUCED OR USED IN WHOLE OR IN PART, AS THE BASIS FOR THE MANUFACTURE OR SALE OF ITEMS WITHOUT WRITTEN PERMISSION FROM SCHNEIDER ELECTRIC. THIS DRAWING IS BASED UPON LATEST AVAILABLE INFORMATION AND IS SUBJECT TO CHANGE WITHOUT NOTICE.



TITLE: CONFIGURABLE POWER DISTRIBUTION
InfraStruxure PDU 150kVA
Input: 480V, 3PH, 60Hz
Output: 208V, 3PH, 60Hz
NMC AND DISPLAY INTERFACE

DWG NO: PDPB150G6F REV. 0

DRAWN BY: JAYAPRAKASH 16-APR-13

ENGINEER: FARRUKH SYED, J. RATHEN 13-MAY-13

PROJECT: DRAWINGS SHEET 8 OF 12

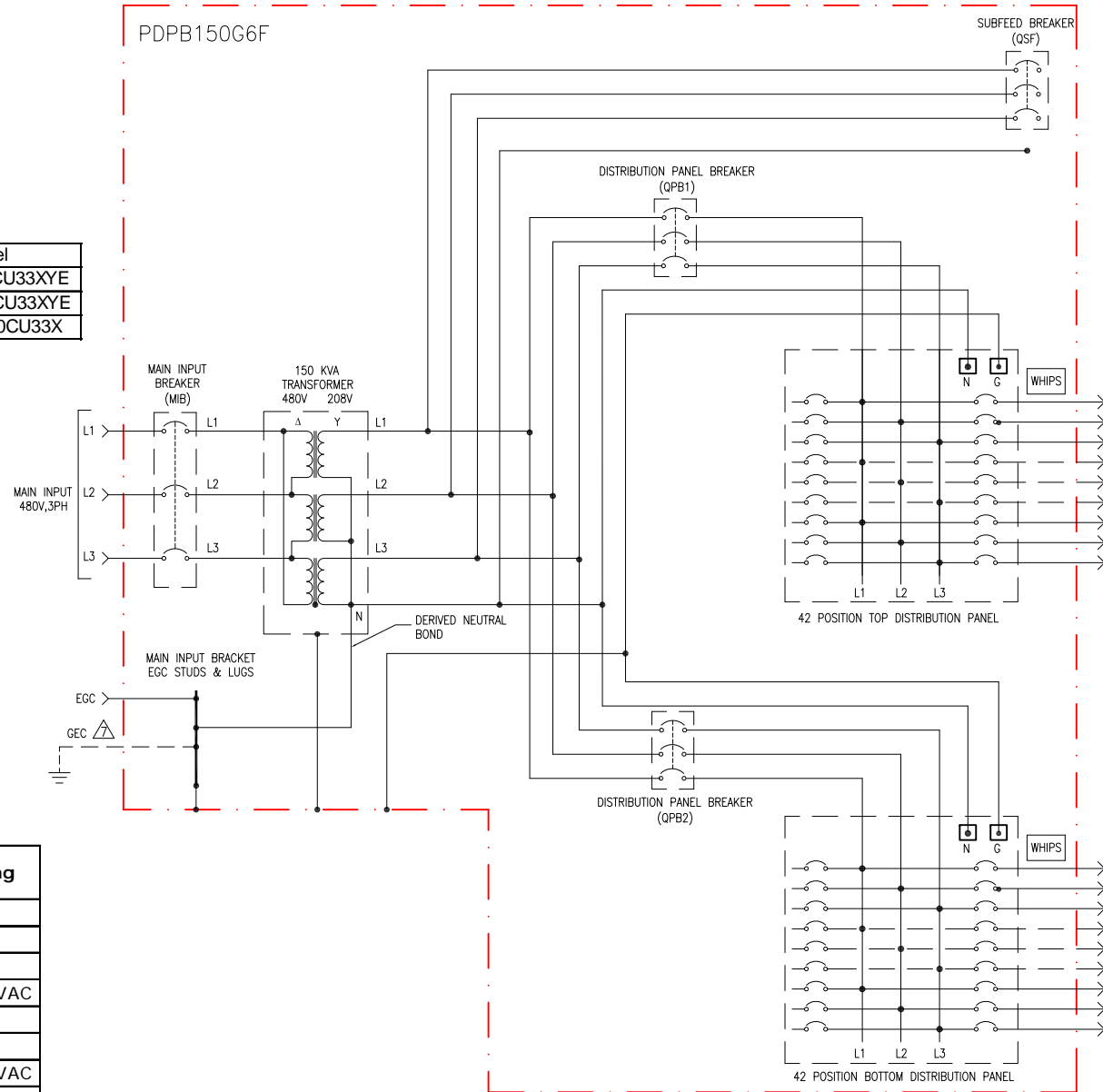
APPROVED BY: AL WARNER 13-MAY-13

THIRD ANGLE PROJECTION

NOTES:

1. INSTALLATION SHALL COMPLY WITH ALL APPLICABLE NATIONAL, STATE AND LOCAL CODES.
2. REFER TO PRODUCT DOCUMENTATION FOR ADDITIONAL DETAILS PRIOR TO INSTALLATION AND SITE PREPARATION WORK.
3. AC SOURCE TO BE 480VAC 3PH 3 WIRE + EGC. (CONTACT SCHNEIDER ELECTRIC IF OTHER).
4. RACK FRAME AND SKINS ARE ELECTRICALLY CONNECTED AND TIED TO CHASSIS GROUND.
5. TRANSFORMER BASE IS GROUNDED THROUGH RACK FRAME.
6. ALL AC POWER CABLING TO BE 600V RATED
- △7. THE GROUNDING ELECTRODE CONDUCTOR (GEC) IS PROVIDED BY OTHERS.

Device	Type	Rating	Make	Model
MIB	3P, BREAKER	250A, 600V	SquareD - Schneider Electric	NJJS36250CU33XYE
QPB1, QPB2	3P, BREAKER	250A, 600V	SquareD - Schneider Electric	NJGF36250CU33XYE
QSF	3P, BREAKER	400A, 600V	SquareD - Schneider Electric	NLGF36400CU33X



Optional Distribution Breaker details

Type	Rating	Make	Model	kAIC Rating
1P, QOB	15A, 120/240VAC	SquareD - Schneider Electric	QOB115	10kAIC
2P, QOB	15A, 240VAC	SquareD - Schneider Electric	QOB215	10kAIC
1P, QOB	20A, 120/240VAC	SquareD - Schneider Electric	QOB120	10kAIC
2P, QOB	20A, 120/240VAC	SquareD - Schneider Electric	QOB220	10kAIC@240VAC
1P, QOB	30A, 120/240VAC	SquareD - Schneider Electric	QOB130	10kAIC
2P, QOB	30A, 120/240VAC	SquareD - Schneider Electric	QOB230	10kAIC
2P, QOB	20A, 120/240VAC	SquareD - Schneider Electric	QOB220	10kAIC@240VAC
3P, QOB	30A, 240VAC	SquareD - Schneider Electric	QOB330	10kAIC@240VAC
2P, QOB	30A, 120/240VAC	SquareD - Schneider Electric	QOB230	10kAIC@240VAC
3P, QOB	50A, 240VAC	SquareD - Schneider Electric	QOB350	10kAIC
3P, QOB	60A, 240VAC	SquareD - Schneider Electric	QOB360	10kAIC
3P, QOB	20A, 240VAC	SquareD - Schneider Electric	QOB320	10kAIC@240VAC
3P, QOB	30A, 240VAC	SquareD - Schneider Electric	QOB330	10kAIC@240VAC

THIS DRAWING AND SPECIFICATIONS HEREIN ARE THE PROPERTY OF SCHNEIDER ELECTRIC AND SHALL NOT BE COPIED, REPRODUCED OR USED IN WHOLE OR IN PART, AS THE BASIS FOR THE MANUFACTURE OR SALE OF ITEMS WITHOUT WRITTEN PERMISSION FROM SCHNEIDER ELECTRIC. THIS DRAWING IS BASED UPON LATEST AVAILABLE INFORMATION AND IS SUBJECT TO CHANGE WITHOUT NOTICE.

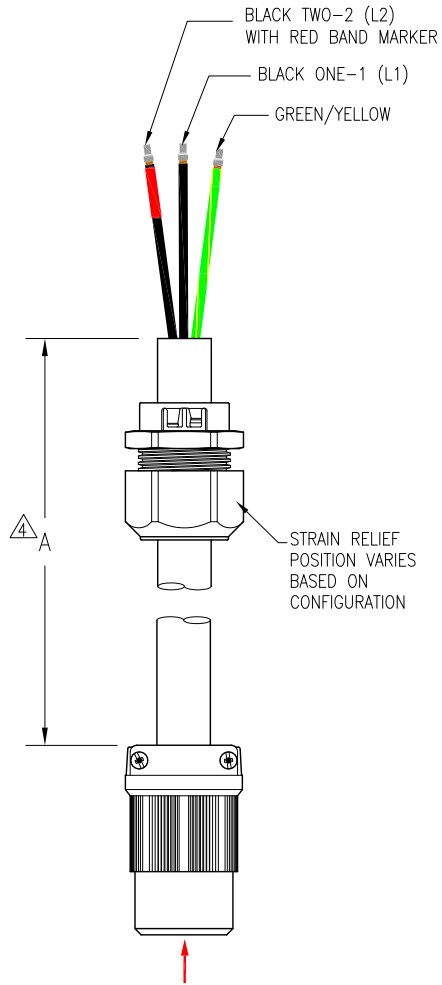


TITLE: CONFIGURABLE POWER DISTRIBUTION
 InfraStruxure PDU 150kVA
 Input: 480V, 3PH, 60Hz
 Output: 208V, 3PH, 60Hz
 FIVE LINE DIAGRAM

PROJECT: DRAWINGS SHEET 9 OF 12

DWG NO: PDPB150G6F REV. 0
 DRAWN BY: JAYAPRAKASH 16-APR-13 ANGLE
 ENGINEER: FARRUKH SYED, J. RATHJEN 13-MAY-13 PROJECTION
 APPROVED BY: AL WARNER 13-MAY-13 N/A

3 WIRE WHIP OPTIONS



REFER TO CONNECTOR/RECEPTACLE COLUMN
OF TABLE FOR RESPECTIVE BOTTOM VIEWS

Breaker Type/Model	Wire size	Connector/ Receptacle	Pin Out
1P, QOB/QOB115	12 AWG	 L5-15R	G - Green/Yellow W - Black two-2 Black one-1
2P, QOB/QOB215	12 AWG	 L6-15R	G - Green/Yellow X - Black one-1 Y - Black two-2
1P, QOB/QOB120	12 AWG	 L5-20R	G - Green/Yellow W - Black two-2 Black one-1
2P, QOB/QOB220	12 AWG	 L6-20R	G - Green/Yellow X - Black one-1 Y - Black two-2
1P, QOB/QOB130	10 AWG	 L5-30R	G - Green/Yellow W - Black two-2 Black one-1
2P, QOB/QOB230	10 AWG	 L6-30R	G - Green/Yellow X - Black one-1 Y - Black two-2

- NOTES:**
1. INSTALLATION SHALL COMPLY WITH ALL APPLICABLE NATIONAL, STATE AND LOCAL CODES.
 2. REFER TO PRODUCT DOCUMENTATION FOR ADDITIONAL DETAILS PRIOR TO INSTALLATION AND SITE PREPARATION WORK.
 3. CONNECTOR SHIPPED WITH THE UNIT. CABLE TYPE TC, UL AND CSA APPROVED.
 - △ 4. LENGTH OF THE CABLE 'A' RANGE FROM 5ft [1.5meter] TO 61ft [18.5meter] IN INCREMENTS OF 2ft [0.6meter]

THIS DRAWING AND SPECIFICATIONS HEREIN ARE THE PROPERTY OF SCHNEIDER ELECTRIC AND SHALL NOT BE COPIED, REPRODUCED OR USED IN WHOLE OR IN PART, AS THE BASIS FOR THE MANUFACTURE OR SALE OF ITEMS WITHOUT WRITTEN PERMISSION FROM SCHNEIDER ELECTRIC. THIS DRAWING IS BASED UPON LATEST AVAILABLE INFORMATION AND IS SUBJECT TO CHANGE WITHOUT NOTICE.

**Schneider
Electric**

TITLE: CONFIGURABLE POWER DISTRIBUTION
InfraStruxure PDU 150kVA
Input: 480V, 3PH, 60Hz
Output: 208V, 3PH, 60Hz
3 WIRE WHIP OPTION

PROJECT: DRAWINGS SHEET 10 OF 12

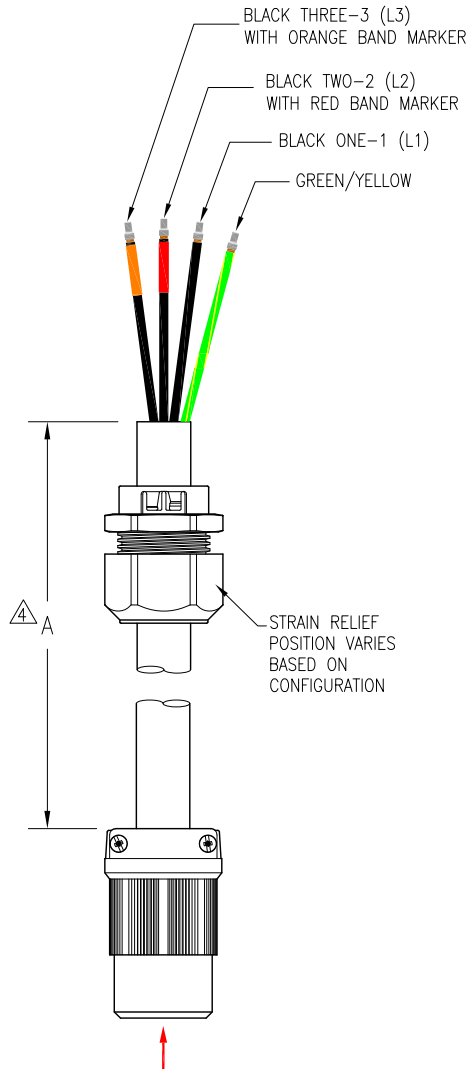
DWG NO: PDPB150G6F REV. 0





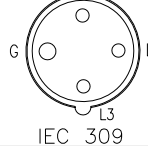
DRAWN BY: JAYAPRAKASH 16-APR-13 THIRD

ENGINEER: FARRUKH SYED, J. RATHJEN 13-MAY-13 ANGLE

APPROVED BY: AL WARNER 13-MAY-13 PROJECTION

4 WIRE WHIP OPTIONS



Breaker Type/Model	Wire size	Connector/ Receptacle	Pin Out
2P, QOB/QOB220	10 AWG	 L14-20R	G - Green/Yellow X - Black one-1 Y - Black two-2 W - Black three-3
3P, QOB/QOB330	10 AWG	 L15-30R	G - Green/Yellow X - Black one-1 Y - Black two-2 Z - Black three-3
2P, QOB/QOB230	10 AWG	 L14-30R	G - Green/Yellow X - Black one-1 Y - Black two-2 W - Black three-3
3P, QOB/QOB350	6 AWG	 HUBBELL CS8364C	G - Green/Yellow X - Black one-1 Y - Black two-2 Z - Black three-3
3P, QOB/QOB360	6 AWG	 IEC 309	G - Green/Yellow L1 - Black one-1 L2 - Black two-2 L3 - Black three-3

REFER TO CONNECTOR/RECEPTACLE COLUMN OF TABLE FOR RESPECTIVE BOTTOM VIEWS. THE SIDE VIEW IS A GENERIC REPRESENTATION & MAY VARY FOR SOME CONNECTORS.

NOTES:

1. INSTALLATION SHALL COMPLY WITH ALL APPLICABLE NATIONAL, STATE AND LOCAL CODES.
2. REFER TO PRODUCT DOCUMENTATION FOR ADDITIONAL DETAILS PRIOR TO INSTALLATION AND SITE PREPARATION WORK.
3. CONNECTOR SHIPPED WITH THE UNIT. CABLE TYPE TC, UL AND CSA APPROVED.
- △ 4. LENGTH OF THE CABLE 'A' RANGE FROM 5ft [1.5meter] TO 61ft [18.5meter] IN INCREMENTS OF 2ft [0.6meter]

THIS DRAWING AND SPECIFICATIONS HEREIN ARE THE PROPERTY OF SCHNEIDER ELECTRIC AND SHALL NOT BE COPIED, REPRODUCED OR USED IN WHOLE OR IN PART, AS THE BASIS FOR THE MANUFACTURE OR SALE OF ITEMS WITHOUT WRITTEN PERMISSION FROM SCHNEIDER ELECTRIC. THIS DRAWING IS BASED UPON LATEST AVAILABLE INFORMATION AND IS SUBJECT TO CHANGE WITHOUT NOTICE.

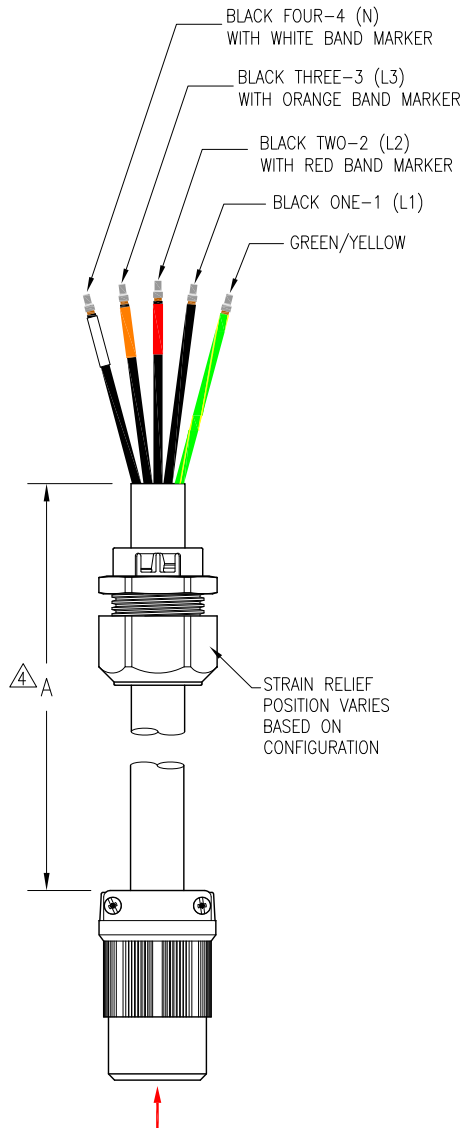


TITLE: CONFIGURABLE POWER DISTRIBUTION
 InfraStruxure PDU 150kVA
 Input: 480V, 3PH, 60Hz
 Output: 208V, 3PH, 60Hz
 4 WIRE WHIP OPTION

DWG NO:	PDPB150G6F	REV.	0
DRAWN BY:	JAYAPRAKASH	16-APR-13	THIRD
ENGINEER:	FARRUKH SYED, J. RATHJEN	13-MAY-13	ANGLE
APPROVED BY:	AL WARNER	13-MAY-13	PROJECTION

PROJECT: DRAWINGS SHEET 110F12

5 WIRE WHIP OPTIONS



Breaker Type/Model	Wire size	Connector/ Receptacle	Pin Out
3P, QOB/QOB320	12 AWG	 L21-20R	G - Green/Yellow X - Black one-1 Y - Black two-2 Z - Black three-3 W - Neutral
3P, QOB/QOB330	10AWG	 L21-30R	G - Green/Yellow X - Black one-1 Y - Black two-2 Z - Black three-3 W - Neutral

REFER TO CONNECTOR/RECEPTACLE COLUMN OF TABLE FOR RESPECTIVE BOTTOM VIEWS

NOTES:

1. INSTALLATION SHALL COMPLY WITH ALL APPLICABLE NATIONAL, STATE AND LOCAL CODES.
2. REFER TO PRODUCT DOCUMENTATION FOR ADDITIONAL DETAILS PRIOR TO INSTALLATION AND SITE PREPARATION WORK.
3. CONNECTOR SHIPPED WITH THE UNIT. CABLE TYPE TC, UL AND CSA APPROVED.
- △4. LENGTH OF THE CABLE 'A' RANGE FROM 5ft [1.5meter] TO 61ft [18.5meter] IN INCREMENTS OF 2ft [0.6meter]

THIS DRAWING AND SPECIFICATIONS HEREIN ARE THE PROPERTY OF SCHNEIDER ELECTRIC AND SHALL NOT BE COPIED, REPRODUCED OR USED IN WHOLE OR IN PART, AS THE BASIS FOR THE MANUFACTURE OR SALE OF ITEMS WITHOUT WRITTEN PERMISSION FROM SCHNEIDER ELECTRIC. THIS DRAWING IS BASED UPON LATEST AVAILABLE INFORMATION AND IS SUBJECT TO CHANGE WITHOUT NOTICE.

Schneider
Electric

TITLE: CONFIGURABLE POWER DISTRIBUTION
InfraStruxure PDU 150kVA
Input: 480V, 3PH, 60Hz
Output: 208V, 3PH, 60Hz
5 WIRE WHIP OPTION

DWG NO:	PDPB150G6F	REV.	0
DRAWN BY:	JAYAPRAKASH	16-APR-13	THIRD
ENGINEER:	FARRUKH SYED, J. RATHJEN	13-MAY-13	ANGLE
APPROVED BY:	AL WARNER	13-MAY-13	PROJECTION

PROJECT: DRAWINGS SHEET 12 OF 12