

NOTES:

1. INSTALLATION SHALL COMPLY WITH ALL APPLICABLE NATIONAL, STATE AND LOCAL CODES.
2. REFER TO PRODUCT DOCUMENTATION FOR ADDITIONAL DETAILS PRIOR TO INSTALLATION AND SITE PREPARATION WORK.
3. ALL DIMENSIONS ARE IN INCHES [MILLIMETERS].
- △ 4. FRONT AND REAR ACCESS ARE REQUIRED FOR SERVICE. MINIMUM RECOMMENDED FRONT CLEARANCE IS 40 [1000] AND REAR CLEARANCE IS 27.6 [700]. INSTALLATION SHALL COMPLY WITH ALL APPLICABLE NATIONAL, STATE AND LOCAL ELECTRICAL CODES.
5. TWO OPTIONS ARE AVAILABLE FOR AC INPUT POWER CABLE ROUTING:
 - i) TOP ENTRY. REFER TO SHEET-2 FOR ACCESS DETAILS.
 - ii) BOTTOM ENTRY USING A SIDE CAR, PDPM150SC. REFER TO SHEET-4 FOR ACCESS DETAILS. SIDE CAR IS A SEPARATE SKU NOT SHOWN IN THIS DRAWING.
6. WEIGHT OF THE UNIT IS 2070 lbs [941 kg].
- △ 7. MAXIMUM HEIGHT OF THE UNIT INCLUDES TOP PROTRUSIONS AND CAPTIVE FASTENERS.

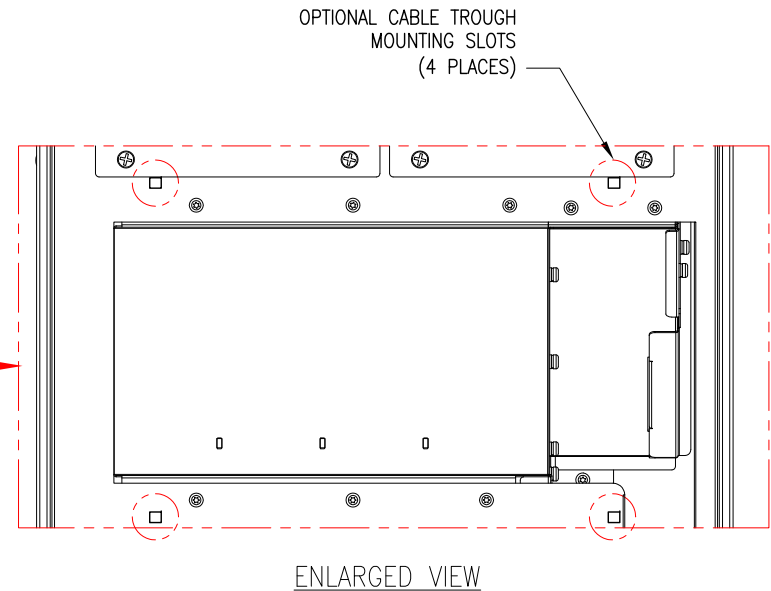
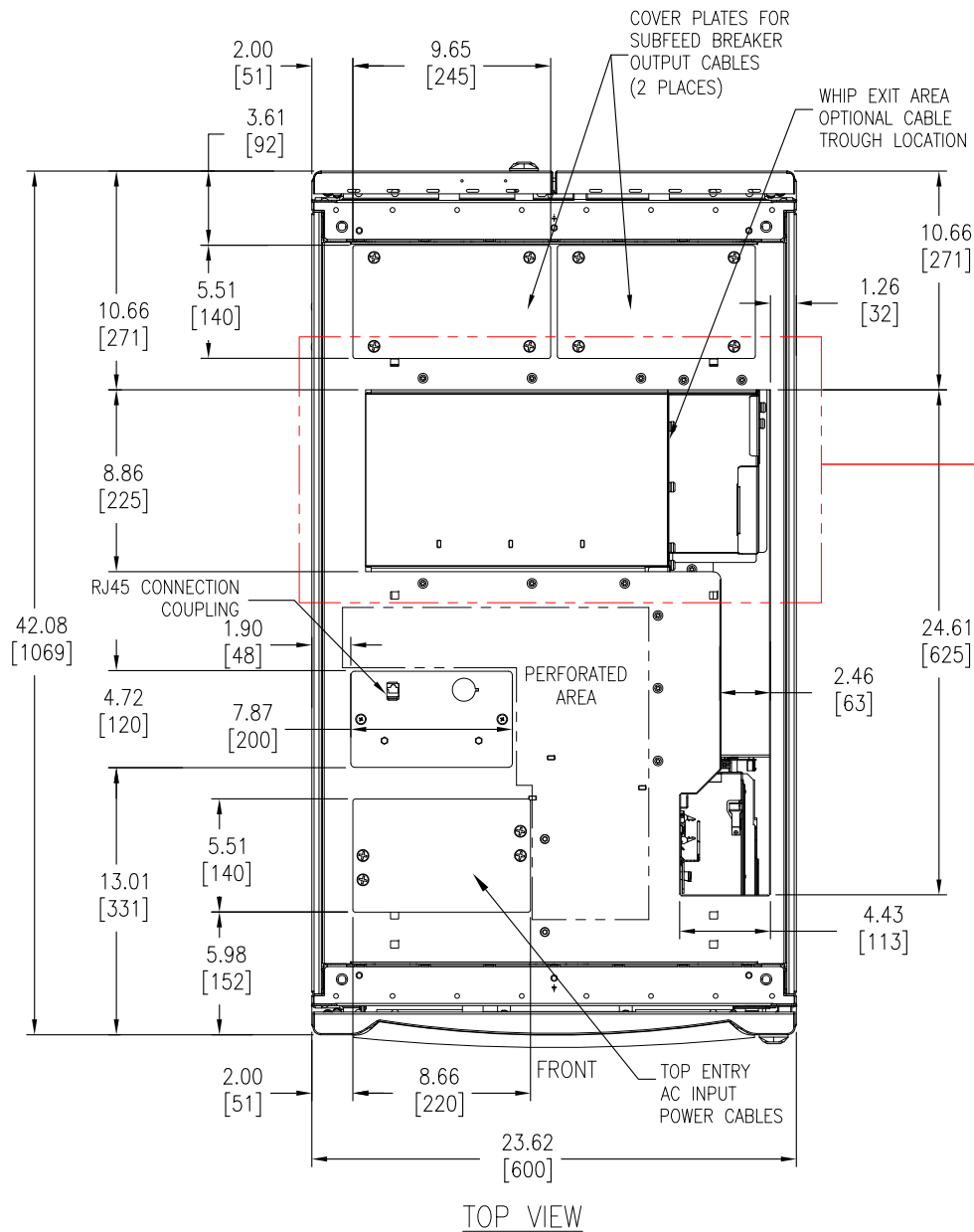
THIS DRAWING AND SPECIFICATIONS HEREIN ARE THE PROPERTY OF SCHNEIDER ELECTRIC AND SHALL NOT BE COPIED, REPRODUCED OR USED IN WHOLE OR IN PART, AS THE BASIS FOR THE MANUFACTURE OR SALE OF ITEMS WITHOUT WRITTEN PERMISSION FROM SCHNEIDER ELECTRIC. THIS DRAWING IS BASED UPON LATEST AVAILABLE INFORMATION AND IS SUBJECT TO CHANGE WITHOUT NOTICE.



TITLE: MODULAR POWER DISTRIBUTION UNIT
ISOLATION TRANSFORMER, 480V:415V
INPUT: 480V, 3PH
OUTPUT: 415V, 3PH, 72-POLES, 2-SUBFEEDS
MAIN MECHANICAL

PROJECT: SUBMITTAL DRAWINGS SHEET 1 OF 8

DWG NO:	PDPM175G6H	REV.	0
DRAWN BY:	JAYAPRAKASH	11-SEP-12	THIRD
ENGINEER:	JACK LU	09-JAN-13	ANGLE
APPROVED BY:	JIE ZHU	09-JAN-13	PROJECTION



NOTES:

1. INSTALLATION SHALL COMPLY WITH ALL APPLICABLE NATIONAL, STATE AND LOCAL CODES.
2. REFER TO PRODUCT DOCUMENTATION FOR ADDITIONAL DETAILS PRIOR TO INSTALLATION AND SITE PREPARATION WORK.
3. ALL DIMENSIONS ARE IN INCHES [MILLIMETERS].

THIS DRAWING AND SPECIFICATIONS HEREIN ARE THE PROPERTY OF SCHNEIDER ELECTRIC AND SHALL NOT BE COPIED, REPRODUCED OR USED IN WHOLE OR IN PART, AS THE BASIS FOR THE MANUFACTURE OR SALE OF ITEMS WITHOUT WRITTEN PERMISSION FROM SCHNEIDER ELECTRIC. THIS DRAWING IS BASED UPON LATEST AVAILABLE INFORMATION AND IS SUBJECT TO CHANGE WITHOUT NOTICE.



TITLE: MODULAR POWER DISTRIBUTION UNIT
ISOLATION TRANSFORMER, 480V-415V
INPUT: 480V, 3PH
OUTPUT: 415V, 3PH, 72-POLES, 2-SUBFEEDS
TOP VIEW

DWG NO: PDPM175G6H

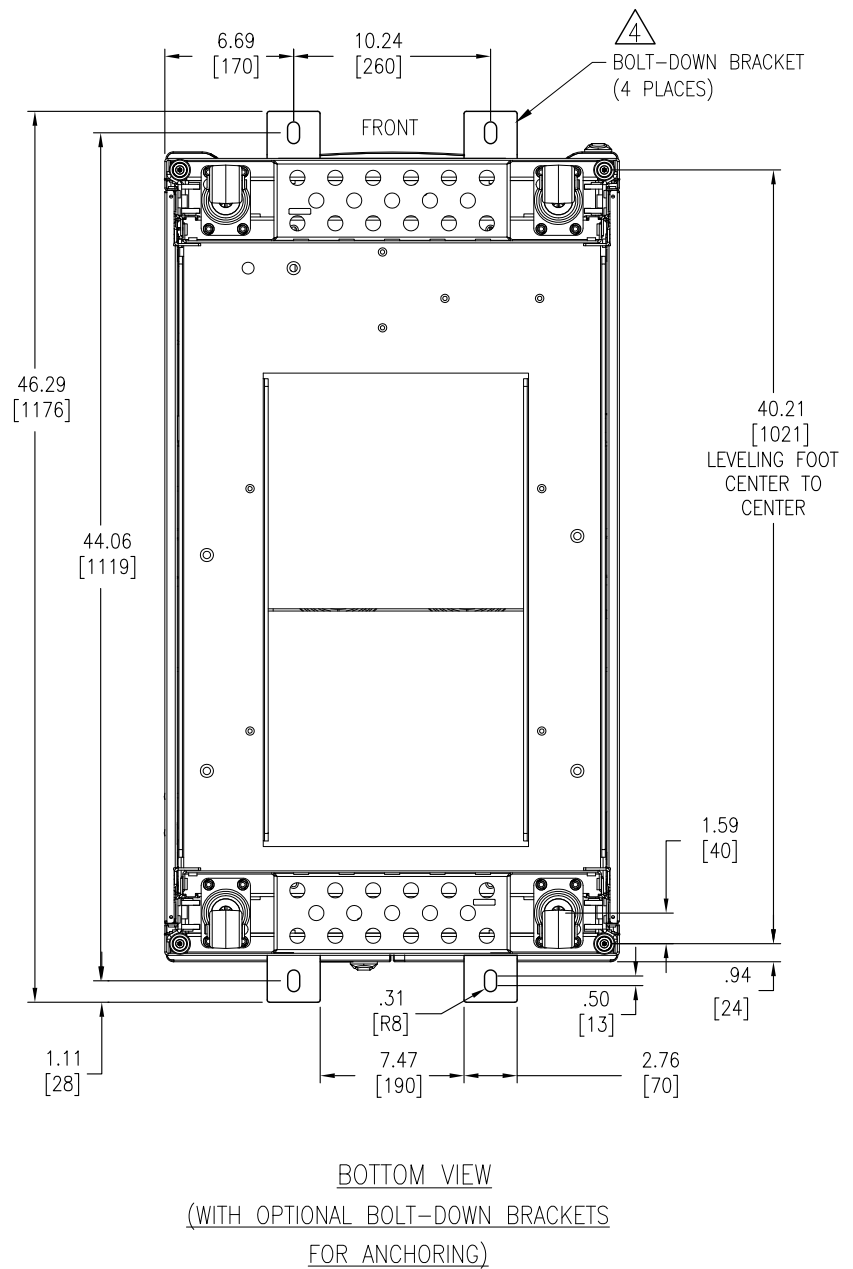
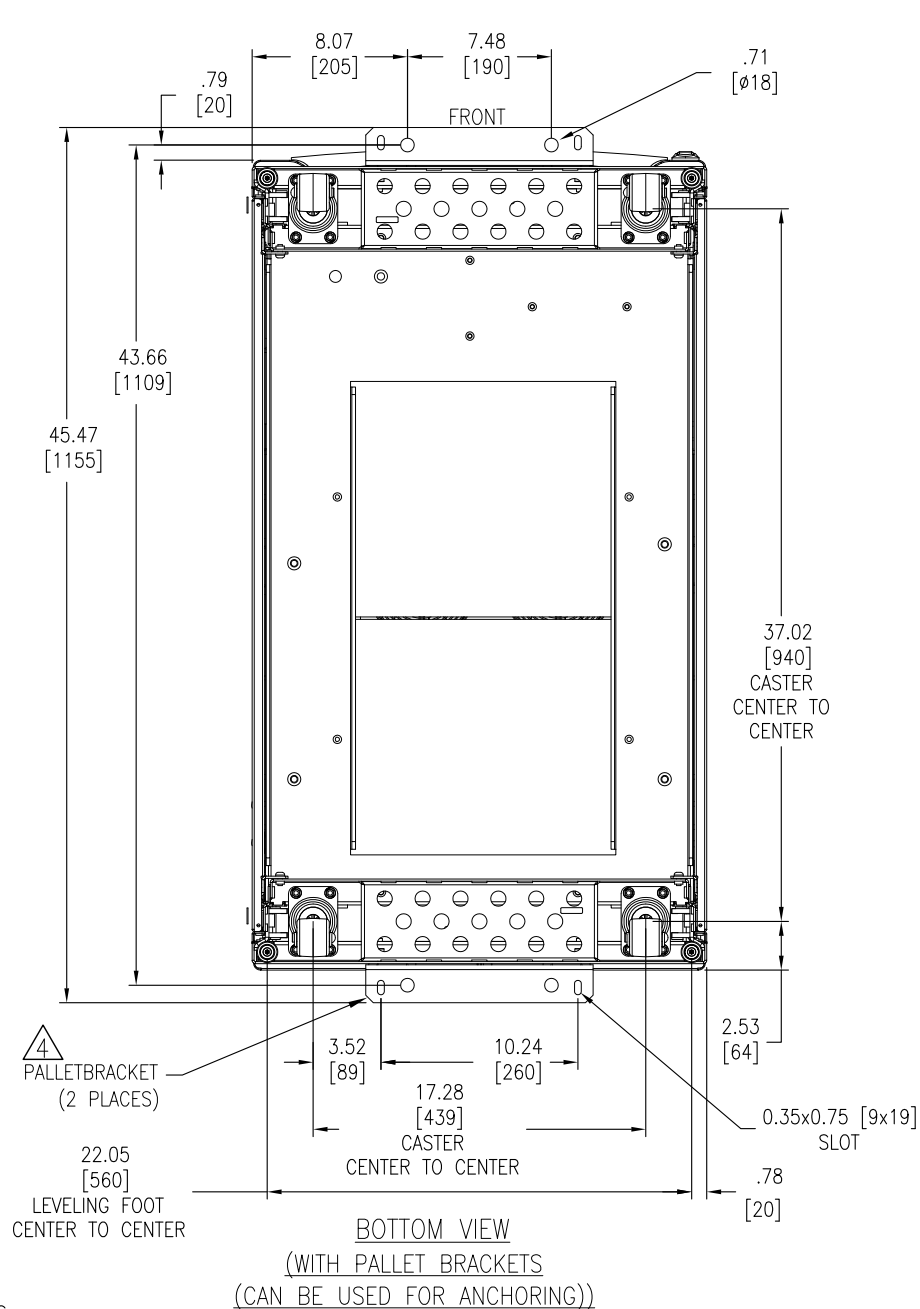
REV. 0

DRAWN BY: JAYAPRAKASH 11-SEP-12 THIRD

ENGINEER: JACK LU 09-JAN-13 ANGLE

APPROVED BY: JIE ZHU 09-JAN-13 PROJECTION

PROJECT: SUBMITTAL DRAWINGS SHEET 2 OF 8



NOTES:

1. INSTALLATION SHALL COMPLY WITH ALL APPLICABLE NATIONAL, STATE AND LOCAL CODES.
2. REFER TO PRODUCT DOCUMENTATION FOR ADDITIONAL DETAILS PRIOR TO INSTALLATION AND SITE PREPARATION WORK.
3. ALL DIMENSIONS ARE IN INCHES [MILLIMETERS].
- △4. ANCHORING BRACKETS CAN BE INSTALLED AT FRONT AND BACK OF UNIT. ADEQUATE FRONT AND REAR CLEARANCE SHOULD BE PROVIDED IF THE UNIT IS TO BE ANCHORED. FOR RECOMMENDED CLEARANCE SEE NOTE 4 ON SHEET-1. USE CODE COMPLIANT FASTENERS TO SECURE UNIT TO THE FLOOR. BOLT DOWN KIT (SKU # AR7701) IS OPTIONAL AND HAS TO BE ORDERED SEPARATELY.
5. REFER TO INSTALLATION MANUAL 990-4384 FOR SEISMIC ANCHORING DETAILS. USE OPTIONAL SEISMIC ANCHORING KIT SYOPT600 IF REQUIRED.

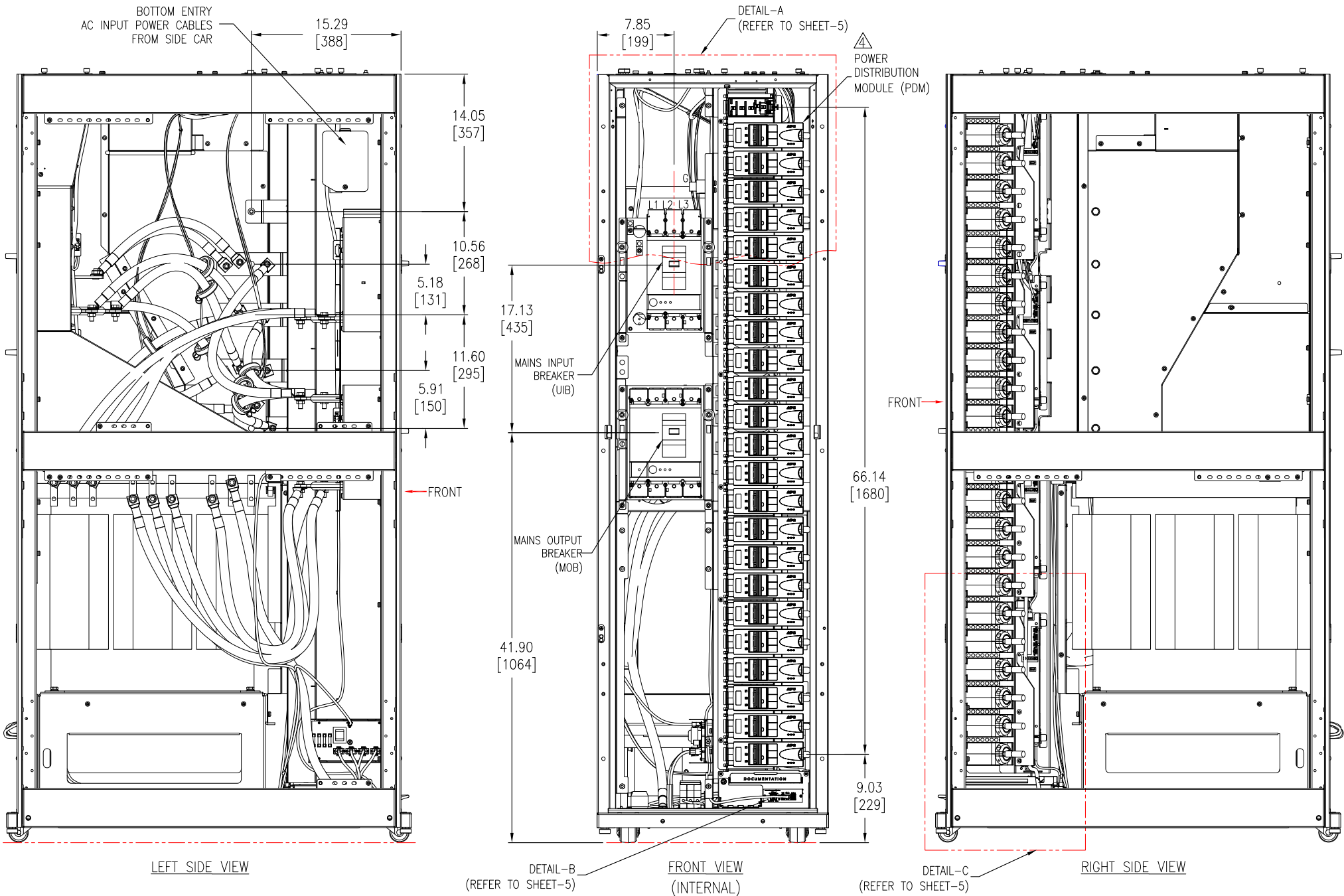
THIS DRAWING AND SPECIFICATIONS HEREIN ARE THE PROPERTY OF SCHNEIDER ELECTRIC AND SHALL NOT BE COPIED, REPRODUCED OR USED IN WHOLE OR IN PART, AS THE BASIS FOR THE MANUFACTURE OR SALE OF ITEMS WITHOUT WRITTEN PERMISSION FROM SCHNEIDER ELECTRIC. THIS DRAWING IS BASED UPON LATEST AVAILABLE INFORMATION AND IS SUBJECT TO CHANGE WITHOUT NOTICE.



TITLE: MODULAR POWER DISTRIBUTION UNIT
ISOLATION TRANSFORMER, 480V:415V
INPUT: 480V, 3PH
OUTPUT: 415V, 3PH, 72-POLES, 2-SUBFEEDS
BOTTOM VIEW

PROJECT: SUBMITTAL DRAWINGS SHEET 3 OF 8

DWG NO:	PDPM175G6H	REV.	0
DRAWN BY:	JAYAPRAKASH	11-SEP-12	THIRD
ENGINEER:	JACK LU	09-JAN-13	ANGLE
APPROVED BY:	JIE ZHU	09-JAN-13	PROJECTION



NOTES.

1. INSTALLATION SHALL COMPLY WITH ALL APPLICABLE NATIONAL, STATE AND LOCAL CODES.
2. REFER TO PRODUCT DOCUMENTATION FOR ADDITIONAL DETAILS PRIOR TO INSTALLATION AND SITE PREPARATION WORK.
3. ALL DIMENSIONS ARE IN INCHES [MILLIMETERS].
- △ 4. ALL POWER DISTRIBUTION MODULES AND EXTENDER CABLES ARE NOT PART OF THIS SKU AND ARE ORDERED SEPARATELY. PLEASE CONTACT SCHNEIDER ELECTRIC.
5. SOME STRUCTURAL DETAILS HAVE BEEN OMITTED FOR THE PURPOSE OF CLARITY.

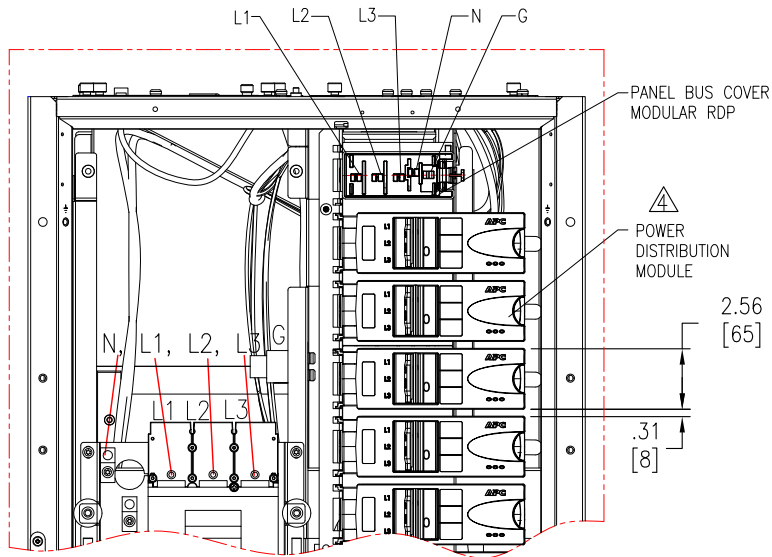
THIS DRAWING AND SPECIFICATIONS HEREIN ARE THE PROPERTY OF SCHNEIDER ELECTRIC AND SHALL NOT BE COPIED, REPRODUCED OR USED IN WHOLE OR IN PART, AS THE BASIS FOR THE MANUFACTURE OR SALE OF ITEMS WITHOUT WRITTEN PERMISSION FROM SCHNEIDER ELECTRIC. THIS DRAWING IS BASED UPON LATEST AVAILABLE INFORMATION AND IS SUBJECT TO CHANGE WITHOUT NOTICE.



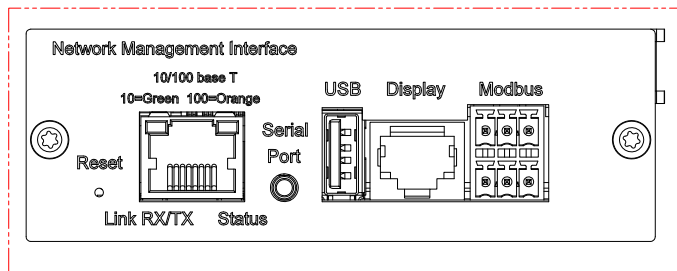
TITLE: MODULAR POWER DISTRIBUTION UNIT ISOLATION TRANSFORMER, 480V:415V
INPUT: 480V, 3PH
OUTPUT: 415V, 3PH, 72-POLES, 2-SUBFEEDS
INTERNAL VIEW

PROJECT: SUBMITTAL DRAWINGS SHEET 4 OF 8

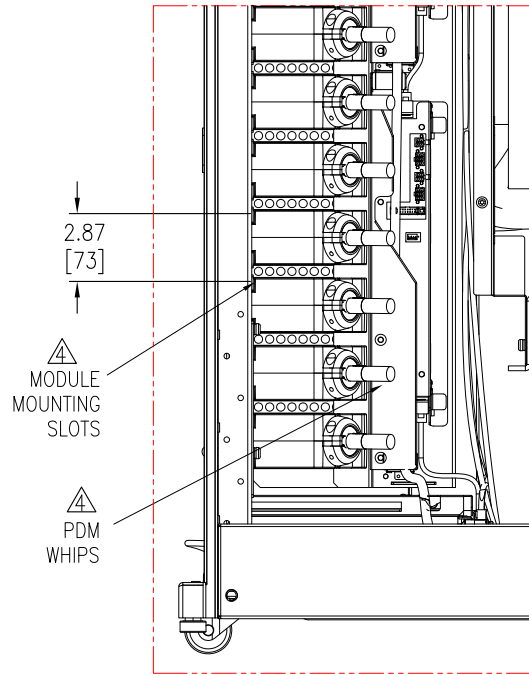
DWG NO:	PDPM175G6H	REV.	1
DRAWN BY:	JAYAPRAKASH/KN	29-APR-15	THIRD
ENGINEER:	FARRUKH SYED	29-APR-15	ANGLE
APPROVED BY:	BILL SHERIDAN	29-APR-15	PROJECTION



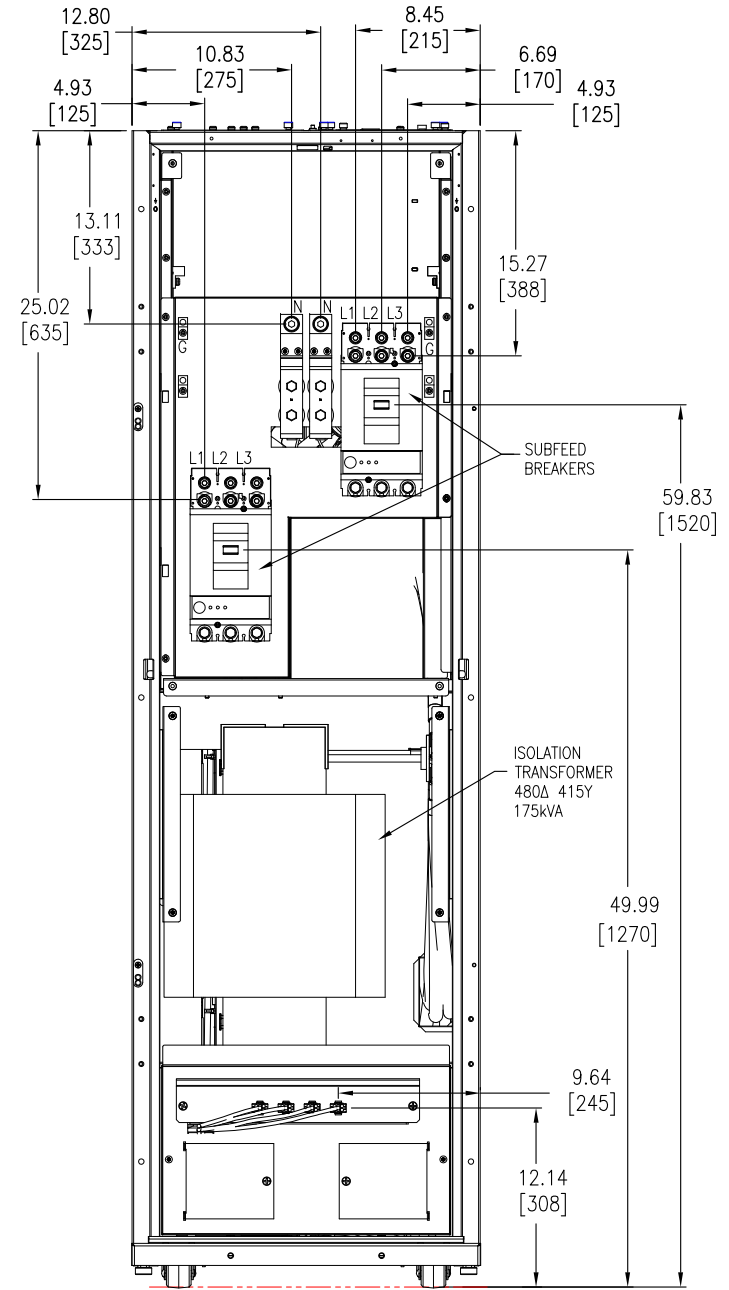
DETAIL-A



DETAIL-B
(COMMUNICATION INTERFACE)



DETAIL-C



REAR VIEW

NOTES.

1. INSTALLATION SHALL COMPLY WITH ALL APPLICABLE NATIONAL, STATE AND LOCAL CODES.
2. REFER TO PRODUCT DOCUMENTATION FOR ADDITIONAL DETAILS PRIOR TO INSTALLATION AND SITE PREPARATION WORK.
3. ALL DIMENSIONS ARE IN INCHES [MILLIMETERS].
4. ALL POWER DISTRIBUTION MODULES AND EXTENDER CABLES ARE NOT PART OF THIS SKU AND ARE ORDERED SEPARATELY. PLEASE CONTACT SCHNEIDER ELECTRIC.

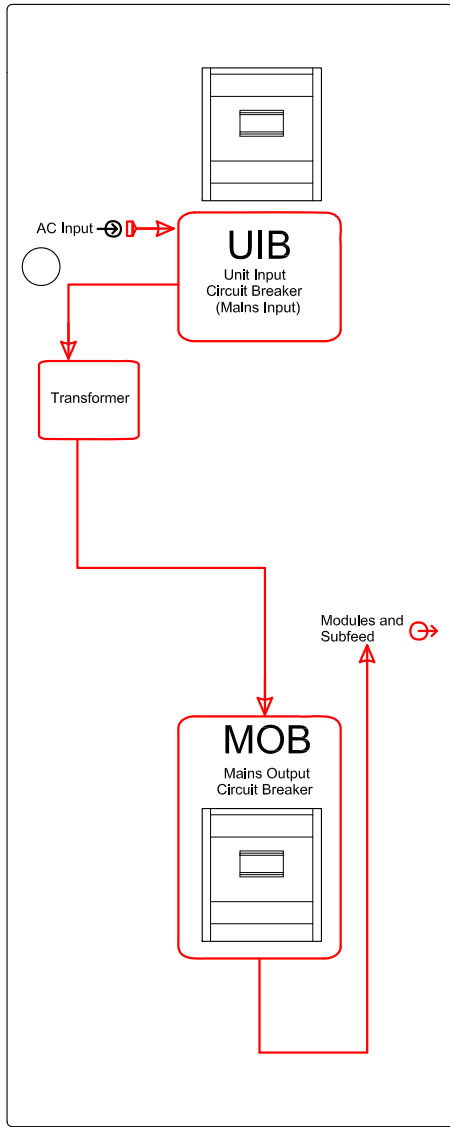
THIS DRAWING AND SPECIFICATIONS HEREIN ARE THE PROPERTY OF SCHNEIDER ELECTRIC AND SHALL NOT BE COPIED, REPRODUCED OR USED IN WHOLE OR IN PART, AS THE BASIS FOR THE MANUFACTURE OR SALE OF ITEMS WITHOUT WRITTEN PERMISSION FROM SCHNEIDER ELECTRIC. THIS DRAWING IS BASED UPON LATEST AVAILABLE INFORMATION AND IS SUBJECT TO CHANGE WITHOUT NOTICE.



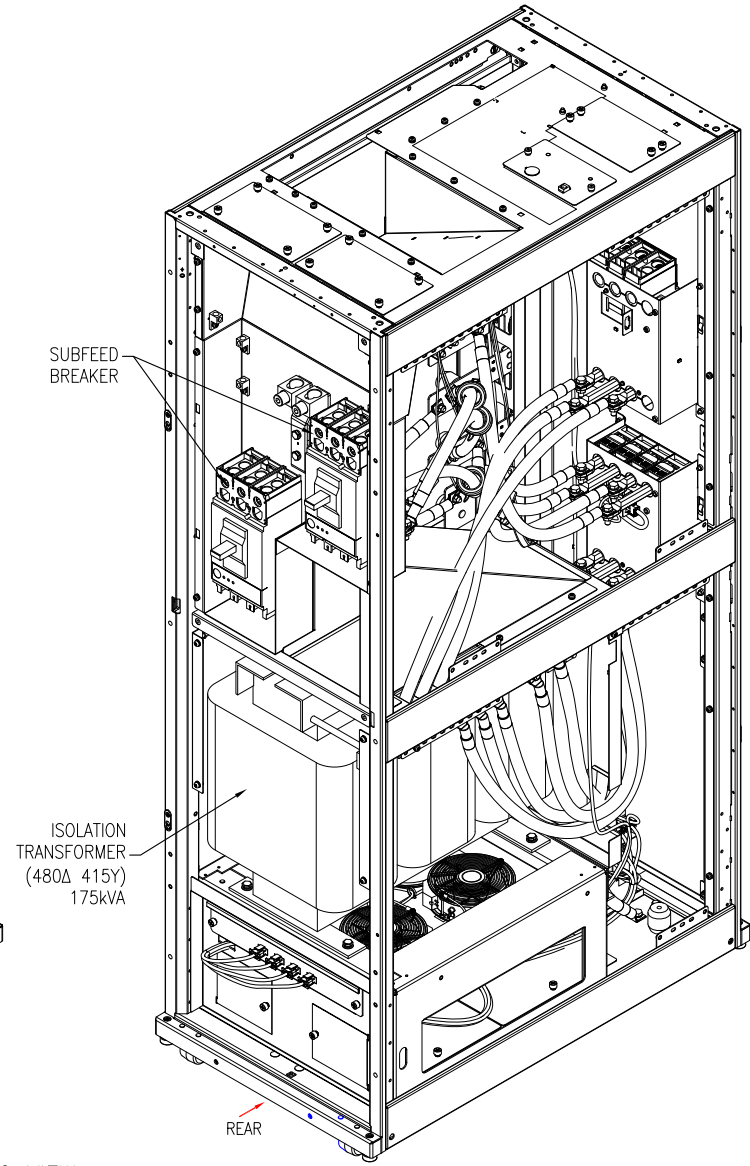
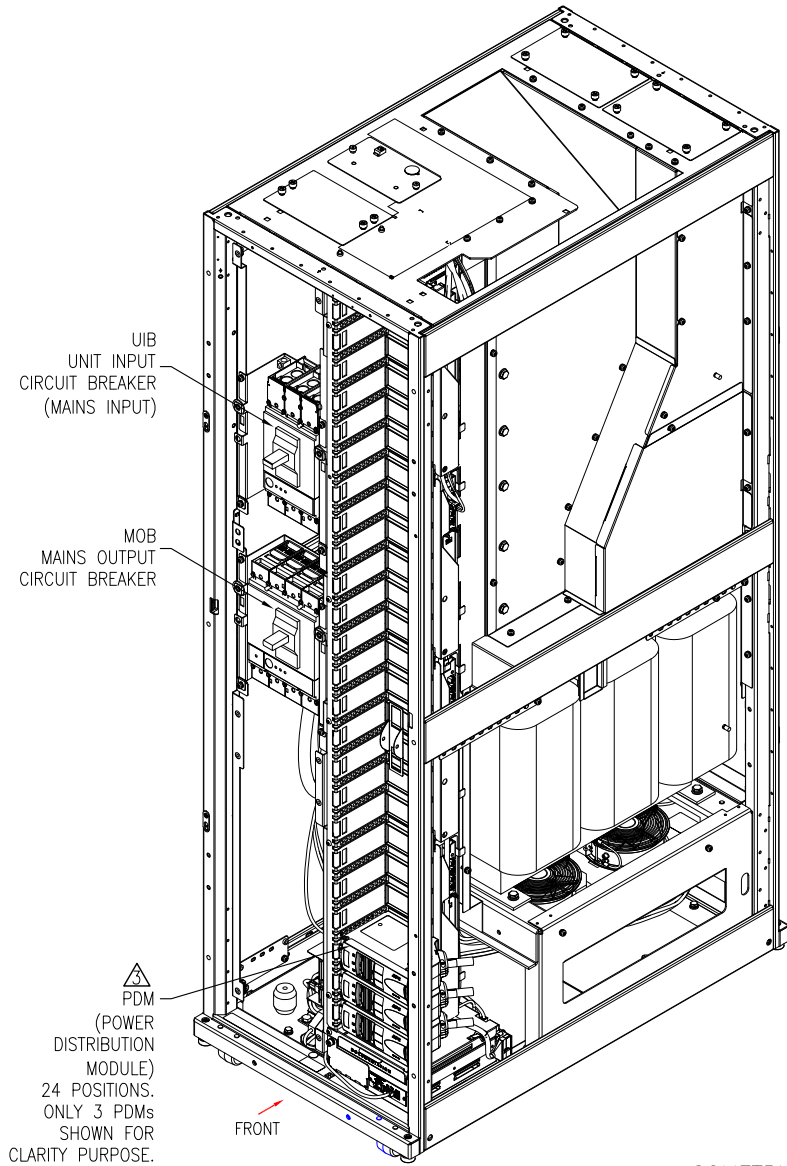
TITLE: MODULAR POWER DISTRIBUTION UNIT
ISOLATION TRANSFORMER, 480V:415V
INPUT: 480V, 3PH
OUTPUT: 415V, 3PH, 72-POLES, 2-SUBFEEDS
REAR VIEW & INTERNAL-DETAILS

DWG NO:	PDPM175G6H	REV.	1
DRAWN BY:	JAYAPRAKASH/KN	29-APR-15	THIRD
ENGINEER:	FARRUKH SYED	29-APR-15	ANGLE
APPROVED BY:	BILL SHERIDAN	29-APR-15	PROJECTION

PROJECT: SUBMITTAL DRAWINGS SHEET 5 OF 8



POWERFLOW DIAGRAM



**ISOMETRIC VIEW
(INTERNAL ASSEMBLY)**

NOTES:

1. INSTALLATION SHALL COMPLY WITH ALL APPLICABLE NATIONAL, STATE AND LOCAL CODES.
2. REFER TO PRODUCT DOCUMENTATION FOR ADDITIONAL DETAILS PRIOR TO INSTALLATION AND SITE PREPARATION WORK.
- △3. ALL POWER DISTRIBUTION MODULES AND EXTENDER CABLES ARE NOT PART OF THIS SKU AND ARE ORDERED SEPARATELY. PLEASE CONTACT SCHNEIDER ELECTRIC.
4. SOME STRUCTURAL DETAILS HAVE BEEN OMITTED FOR THE PURPOSE OF CLARITY.

THIS DRAWING AND SPECIFICATIONS HEREIN ARE THE PROPERTY OF SCHNEIDER ELECTRIC AND SHALL NOT BE COPIED, REPRODUCED OR USED IN WHOLE OR IN PART, AS THE BASIS FOR THE MANUFACTURE OR SALE OF ITEMS WITHOUT WRITTEN PERMISSION FROM SCHNEIDER ELECTRIC. THIS DRAWING IS BASED UPON LATEST AVAILABLE INFORMATION AND IS SUBJECT TO CHANGE WITHOUT NOTICE.



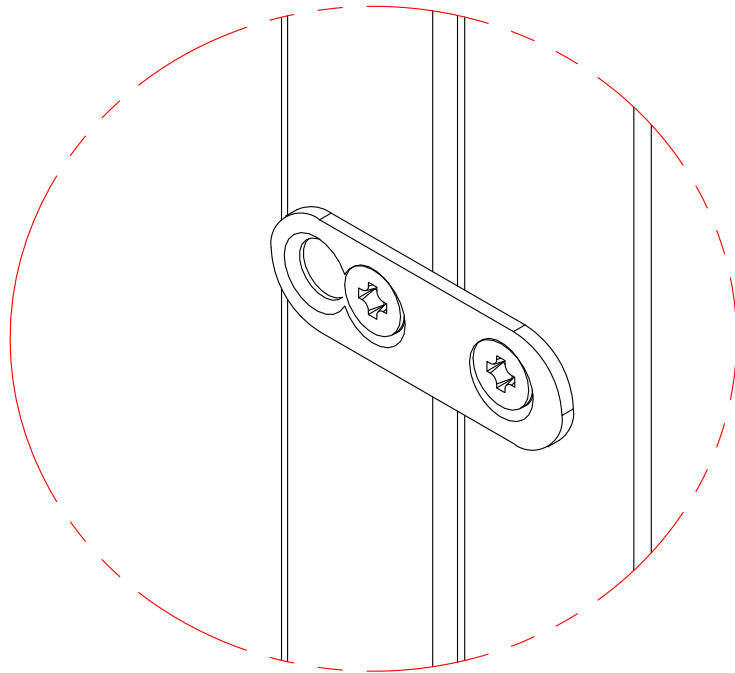
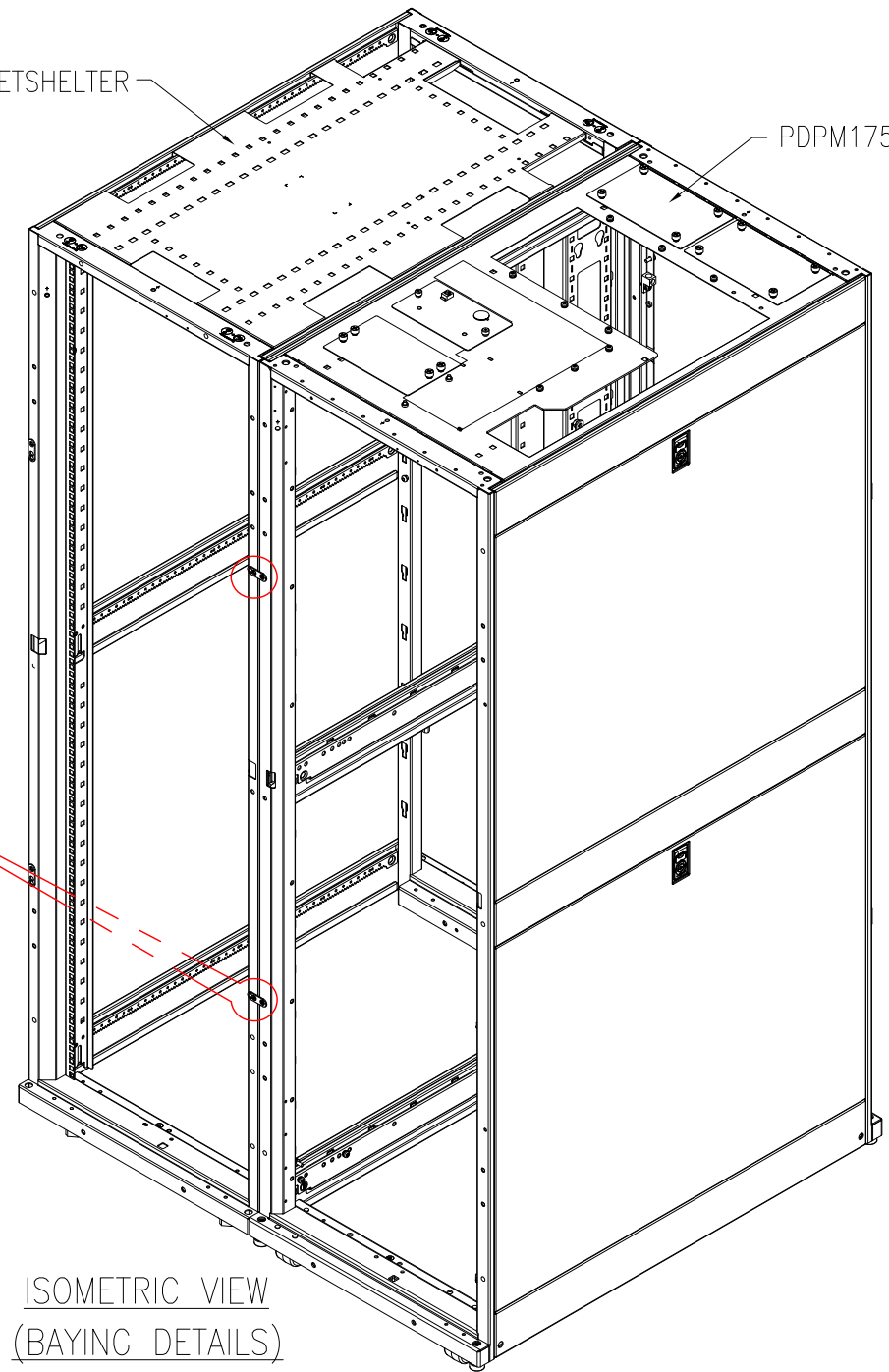
TITLE: MODULAR POWER DISTRIBUTION UNIT
ISOLATION TRANSFORMER, 480V:415V
INPUT: 480V, 3PH
OUTPUT: 415V, 3PH, 72-POLES, 2-SUBFEEDS
PROJECT: SUBMITTAL DRAWINGS **SHEET** 6 OF 8

DWG NO: PDPM175G6H
DRAWN BY: JAYAPRAKASH/KN 29-APR-15
ENGINEER: FARRUKH SYED 29-APR-15
APPROVED BY: BILL SHERIDAN 29-APR-15

REV. 1
THIRD
ANGLE
PROJECTION

NETSHELTER

PDPM175G6H



BAYING BRACKETS
(2 PLACES)

ISOMETRIC VIEW
(BAYING DETAILS)

NOTES:

1. INSTALLATION SHALL COMPLY WITH ALL APPLICABLE NATIONAL, STATE AND LOCAL CODES.
2. REFER TO PRODUCT DOCUMENTATION FOR ADDITIONAL DETAILS PRIOR TO INSTALLATION AND SITE PREPARATION WORK.
3. SOME STRUCTURAL DETAILS HAVE BEEN OMITTED FOR THE PURPOSE OF CLARITY.

THIS DRAWING AND SPECIFICATIONS HEREIN ARE THE PROPERTY OF SCHNEIDER ELECTRIC AND SHALL NOT BE COPIED, REPRODUCED OR USED IN WHOLE OR IN PART, AS THE BASIS FOR THE MANUFACTURE OR SALE OF ITEMS WITHOUT WRITTEN PERMISSION FROM SCHNEIDER ELECTRIC. THIS DRAWING IS BASED UPON LATEST AVAILABLE INFORMATION AND IS SUBJECT TO CHANGE WITHOUT NOTICE.



TITLE: MODULAR POWER DISTRIBUTION UNIT
ISOLATION TRANSFORMER, 480V:415V
INPUT: 480V, 3PH
OUTPUT: 415V, 3PH, 72-POLES, 2-SUBFEEDS
BAYING DETAILS

PROJECT: SUBMITTAL DRAWINGS SHEET 7 OF 8

DWG NO: PDPM175G6H

DRAWN BY: JAYAPRAKASH 11-SEP-12

ENGINEER: JACK LU 09-JAN-13

APPROVED BY: JIE ZHU 09-JAN-13

REV. 0

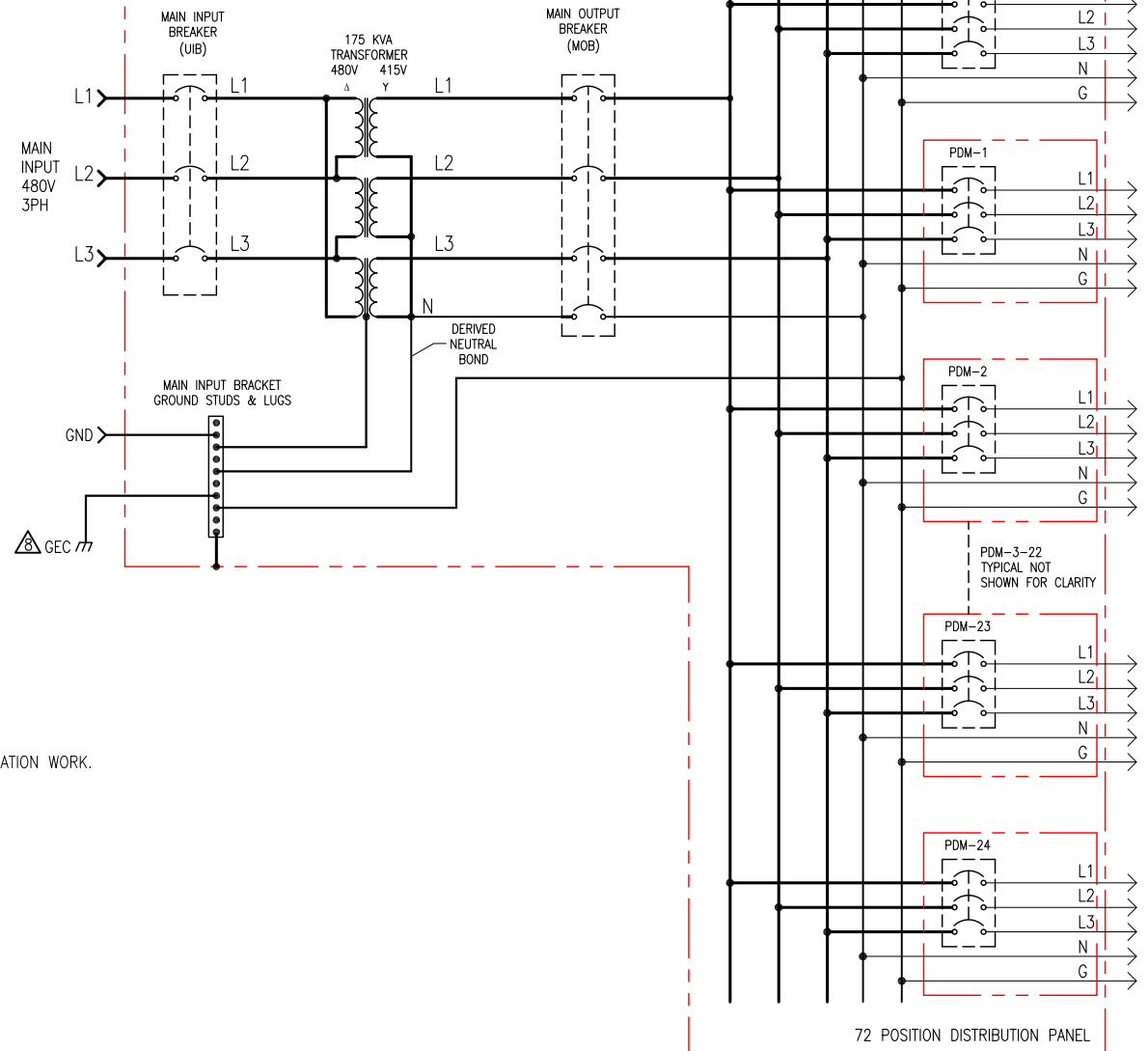
THIRD

ANGLE

PROJECTION

DEVICE	RATING (100% Rated)	TYPE	MAKE	MODEL	RATED SHORT CIRCUIT CURRENT	BREAKER CURRENT SETTINGS AMPS (See breaker label)
UIB	600A, 480V	3 POLE BREAKER	SQUARE D	LJF34600WU33X	65kAIC@480V	225A
MOB	600A, 600V	4 POLE BREAKER	SQUARE D	LJF44600WU33X	65kAIC@480V	250A
SUBFEED BREAKER (UOB)	400A, 600V	3 POLE BREAKER	SQUARE D	LJF36400CU33X	65kAIC@480V	400A
MODULE-X	240V	POWER DISTRIBUTION MODULE	SQUARE D	SEE NOTE 7	10kAIC	N/A

MODULAR IT POWER DISTRIBUTION UNIT (PDPM175G6H)



- NOTES:**
- INSTALLATION SHALL COMPLY WITH ALL APPLICABLE NATIONAL, STATE AND LOCAL CODES.
 - REFER TO [PRODUCT DOCUMENTATION](#) FOR ADDITIONAL DETAILS PRIOR TO INSTALLATION AND SITE PREPARATION WORK.
 - AC SOURCE TO BE 600VAC 3PH 3 WIRE + GROUND + GEC
(CONTACT SCHNEIDER ELECTRIC IF OTHER).
 - RACK FRAME AND SKINS ARE ELECTRICALLY CONNECTED AND TIED TO CHASSIS GROUND.
 - TRANSFORMER BASE IS GROUNDED THROUGH RACK FRAME.
 - ALL AC POWER CABLING TO BE 600V RATED, 3 WIRE + GROUND + GEC (INPUT CABLE),
3WIRE + NEUTRAL + GROUND (OUTPUT CABLE).
 - ALL POWER DISTRIBUTION MODULES ARE NOT PART OF THIS SKU AND
ARE ORDERED SEPARATELY, MAXIMUM 24 MODULES PER SKU. REFER TO [COMPATIBILITY CHART](#) FOR
POWER DISTRIBUTION MODULE OPTIONS AND THEIR BREAKER RATINGS .
 - THIS SYSTEM SHALL BE INSTALLED AS A SEPARATELY DERIVED SYSTEM
IN ACCORDANCE WITH LOCAL AND NATIONAL CODES.
THE GROUNDING ELECTRODE CONDUCTOR (GEC) IS PROVIDED BY OTHERS.

THIS DRAWING AND SPECIFICATIONS HEREIN ARE THE PROPERTY OF SCHNEIDER ELECTRIC AND SHALL NOT BE COPIED, REPRODUCED OR USED IN WHOLE OR IN PART, AS THE BASIS FOR THE MANUFACTURE OR SALE OF ITEMS WITHOUT WRITTEN PERMISSION FROM SCHNEIDER ELECTRIC. THIS DRAWING IS BASED UPON LATEST AVAILABLE INFORMATION AND IS SUBJECT TO CHANGE WITHOUT NOTICE.



TITLE: APC175kW MODULAR PDU
ISOLATION TRANSFORMER, 480V-415V
Input: 480V 3PH 60HZ
Output: 415V 3PH 60HZ, 72 POLE, 2 SUBFEED
FIVE LINE DIAGRAM

PROJECT: SUBMITTAL DRAWINGS SHEET 8 OF 8

DWG NO: PDPM175G6H REV. 2
DRAWN BY: C KRISHNA/S CUNHA/KN 28-MAY-15 ANGLE
ENGINEER: FARRUKH SYED 28-MAY-15 PROJECTION
APPROVED BY: WARNER/BILL SHERIDAN 28-MAY-15 N/A