

NOTES:

1. INSTALLATION SHALL COMPLY WITH ALL APPLICABLE NATIONAL, STATE AND LOCAL CODES.
2. REFER TO [PRODUCT DOCUMENTATION](#) FOR ADDITIONAL DETAILS PRIOR TO INSTALLATION AND SITE PREPARATION WORK.
3. ALL DIMENSIONS ARE IN INCHES [MILLIMETERS].
- △ 4. FRONT AND REAR ACCESS ARE REQUIRED FOR SERVICE. MINIMUM RECOMMENDED FRONT CLEARANCE IS 40 [1000] AND REAR CLEARANCE IS 27.6 [700]. INSTALLATION SHALL COMPLY WITH ALL APPLICABLE NATIONAL, STATE AND LOCAL ELECTRICAL CODES.
5. TWO OPTIONS ARE AVAILABLE FOR AC INPUT POWER CABLE ROUTING:
 - i) TOP ENTRY. REFER TO SHEET-2 FOR ACCESS DETAILS.
 - ii) BOTTOM ENTRY USING A SIDE CAR, PDPM150SC. REFER TO SHEET-4 FOR ACCESS DETAILS. SIDE CAR IS A SEPARATE SKU NOT SHOWN IN THIS DRAWING.
6. WEIGHT OF THE UNIT IS 1938 lbs [881 kg].
- △ 7. MAXIMUM HEIGHT OF THE UNIT INCLUDES TOP PROTRUSIONS AND CAPTIVE FASTENERS.

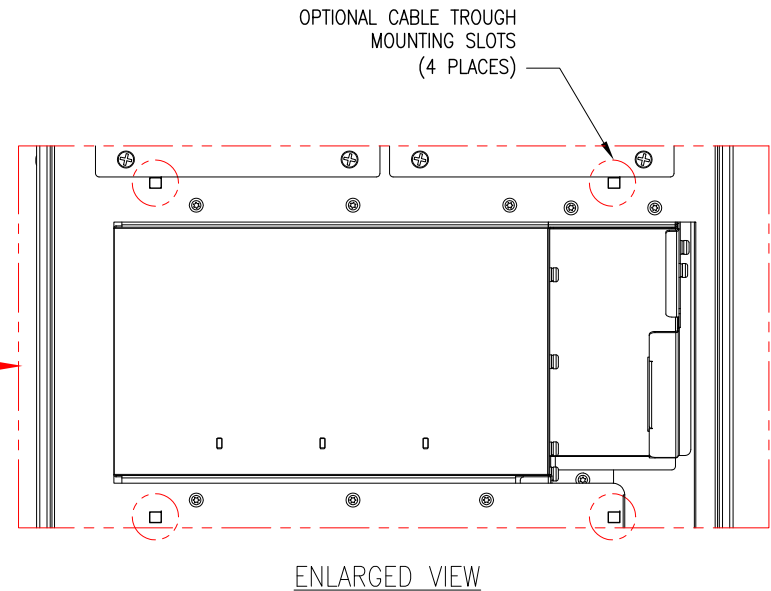
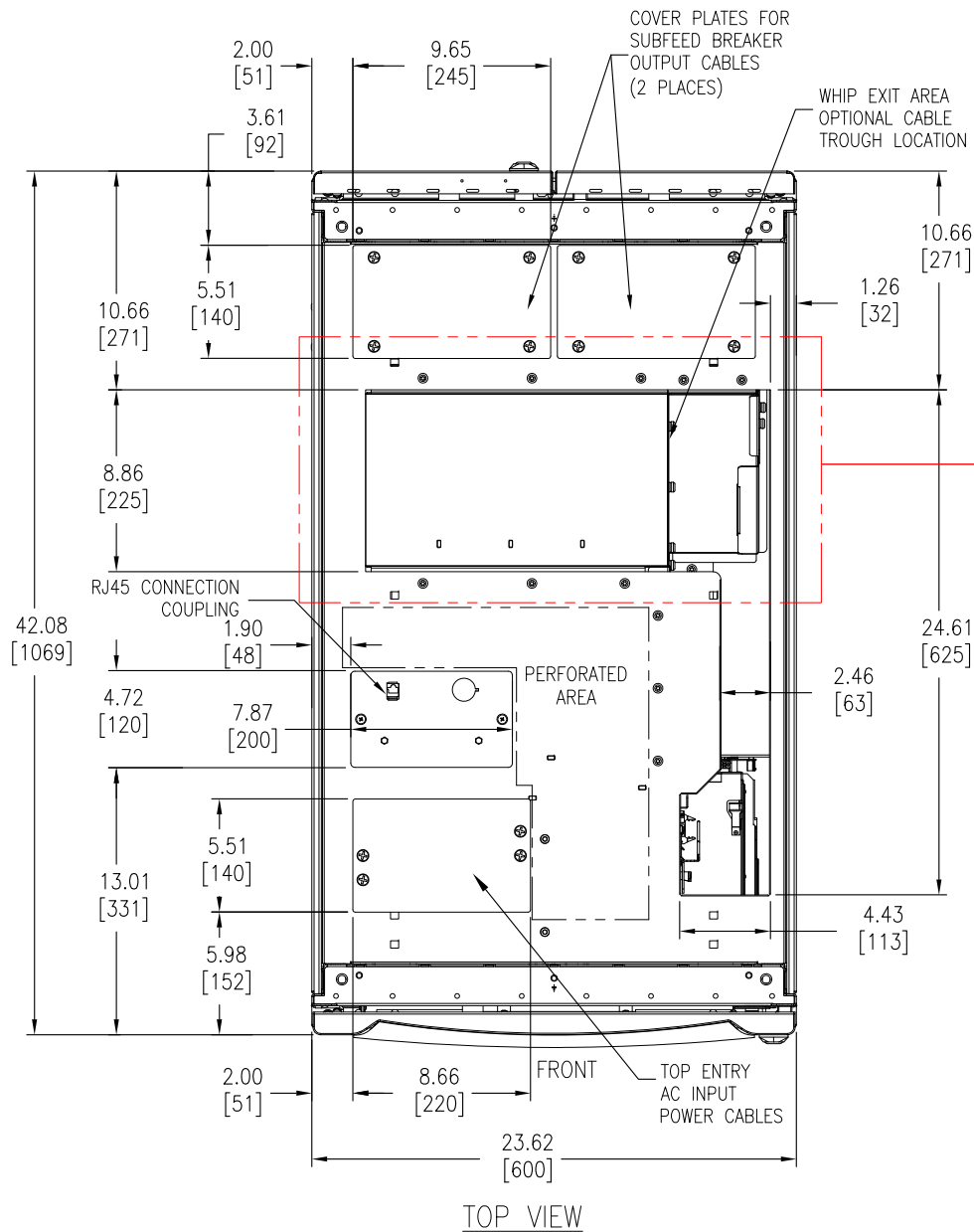
THIS DRAWING AND SPECIFICATIONS HEREIN ARE THE PROPERTY OF SCHNEIDER ELECTRIC AND SHALL NOT BE COPIED, REPRODUCED OR USED IN WHOLE OR IN PART, AS THE BASIS FOR THE MANUFACTURE OR SALE OF ITEMS WITHOUT WRITTEN PERMISSION FROM SCHNEIDER ELECTRIC. THIS DRAWING IS BASED UPON LATEST AVAILABLE INFORMATION AND IS SUBJECT TO CHANGE WITHOUT NOTICE.



TITLE: MODULAR POWER DISTRIBUTION UNIT
ISOLATION TRANSFORMER, 600V:208V
INPUT: 600V, 3PH
OUTPUT: 208V, 3PH, 72-POLES, 2-SUBFEEDS
MAIN MECHANICAL

PROJECT: SUBMITTAL DRAWINGS SHEET 1 OF 8

DWG NO:	PDPM150L6F	REV.	0
DRAWN BY:	JAYAPRAKASH	11-SEP-12	THIRD
ENGINEER:	JACK LU	09-JAN-13	ANGLE
APPROVED BY:	JIE ZHU	09-JAN-13	PROJECTION



NOTES:

1. INSTALLATION SHALL COMPLY WITH ALL APPLICABLE NATIONAL, STATE AND LOCAL CODES.
2. REFER TO PRODUCT DOCUMENTATION FOR ADDITIONAL DETAILS PRIOR TO INSTALLATION AND SITE PREPARATION WORK.
3. ALL DIMENSIONS ARE IN INCHES [MILLIMETERS].

THIS DRAWING AND SPECIFICATIONS HEREIN ARE THE PROPERTY OF SCHNEIDER ELECTRIC AND SHALL NOT BE COPIED, REPRODUCED OR USED IN WHOLE OR IN PART, AS THE BASIS FOR THE MANUFACTURE OR SALE OF ITEMS WITHOUT WRITTEN PERMISSION FROM SCHNEIDER ELECTRIC. THIS DRAWING IS BASED UPON LATEST AVAILABLE INFORMATION AND IS SUBJECT TO CHANGE WITHOUT NOTICE.



TITLE: MODULAR POWER DISTRIBUTION UNIT
ISOLATION TRANSFORMER, 600V:208V
INPUT: 600V, 3PH
OUTPUT: 208V, 3PH, 72-POLES, 2-SUBFEEDS
TOP VIEW

PROJECT: SUBMITTAL DRAWINGS SHEET 2 OF 8

DWG NO: PDPM150L6F

DRAWN BY: JAYAPRAKASH

ENGINEER: JACK LU

APPROVED BY: JIE ZHU

REV. 0

11-SEP-12

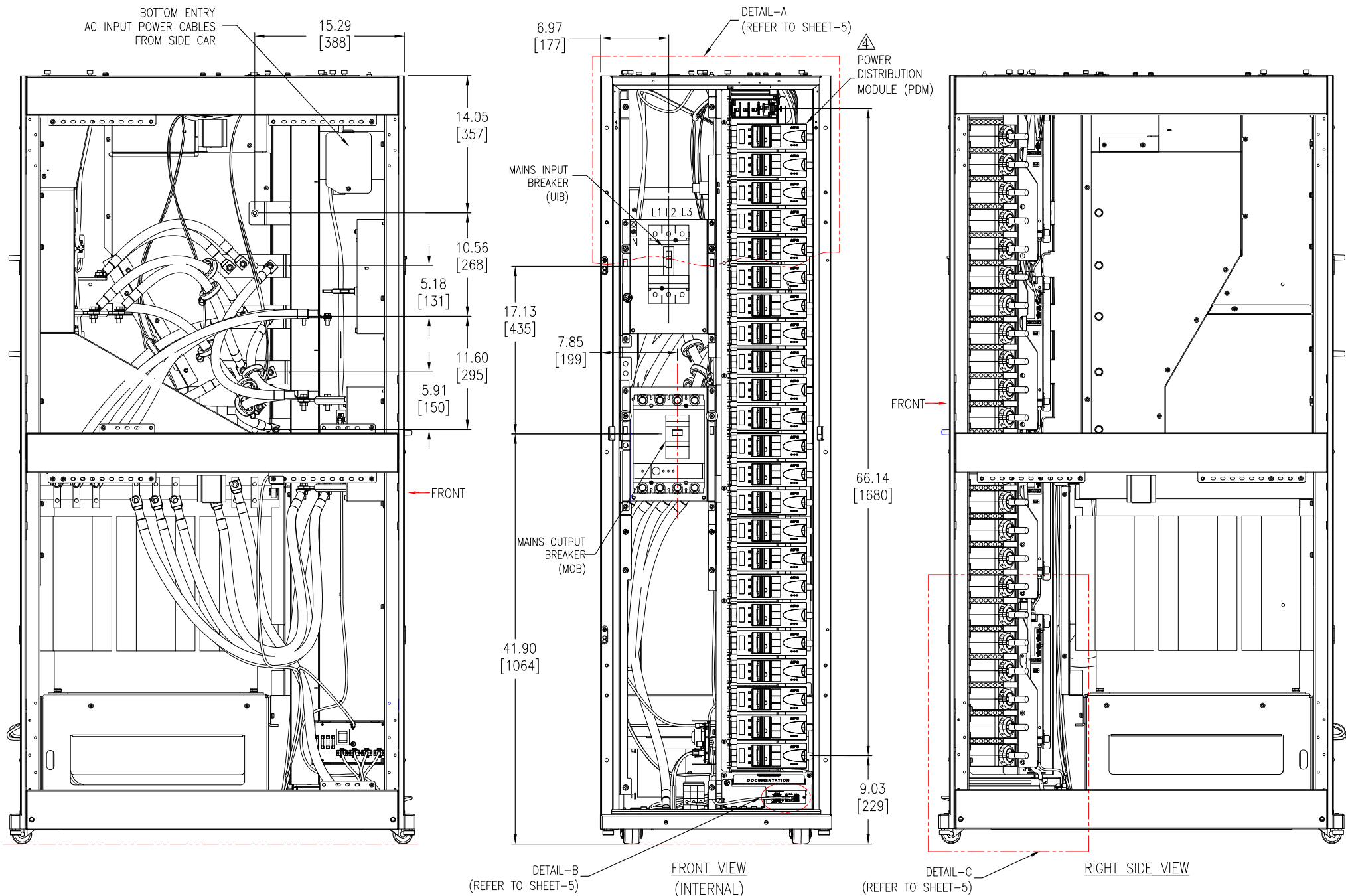
09-JAN-13

09-JAN-13

THIRD

ANGLE

PROJECTION



NOTES.

1. INSTALLATION SHALL COMPLY WITH ALL APPLICABLE NATIONAL, STATE AND LOCAL CODES.
2. REFER TO PRODUCT DOCUMENTATION FOR ADDITIONAL DETAILS PRIOR TO INSTALLATION AND SITE PREPARATION WORK.
3. ALL DIMENSIONS ARE IN INCHES [MILLIMETERS].
- △ 4. ALL POWER DISTRIBUTION MODULES AND EXTENDER CABLES ARE NOT PART OF THIS SKU AND ARE ORDERED SEPARATELY. PLEASE CONTACT SCHNEIDER ELECTRIC.
5. SOME STRUCTURAL DETAILS HAVE BEEN OMITTED FOR THE PURPOSE OF CLARITY.

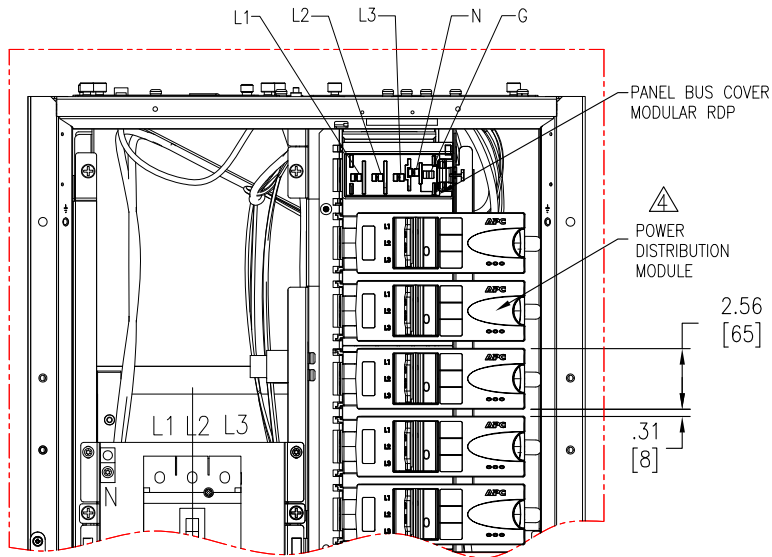
THIS DRAWING AND SPECIFICATIONS HEREIN ARE THE PROPERTY OF SCHNEIDER ELECTRIC AND SHALL NOT BE COPIED, REPRODUCED OR USED IN WHOLE OR IN PART, AS THE BASIS FOR THE MANUFACTURE OR SALE OF ITEMS WITHOUT WRITTEN PERMISSION FROM SCHNEIDER ELECTRIC. THIS DRAWING IS BASED UPON LATEST AVAILABLE INFORMATION AND IS SUBJECT TO CHANGE WITHOUT NOTICE.



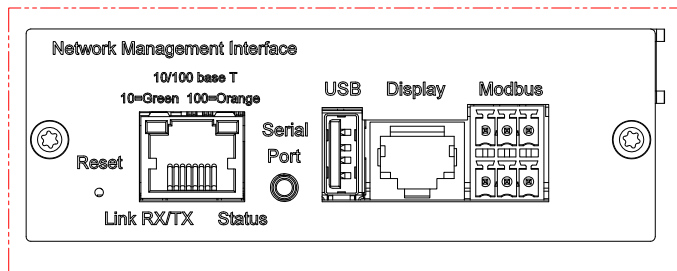
TITLE: MODULAR POWER DISTRIBUTION UNIT
ISOLATION TRANSFORMER, 600V:208V
INPUT: 600V, 3PH
OUTPUT: 208V, 3PH, 72-POLES, 2-SUBFEEDS
INTERNAL VIEW

PROJECT: SUBMITTAL DRAWINGS SHEET 4 OF 8

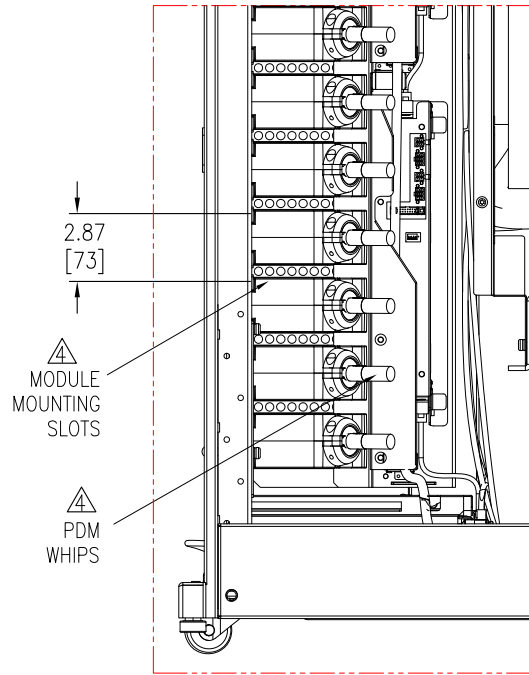
DWG NO:	PDPM150L6F	REV.	1
DRAWN BY:	JAYAPRAKASH/KN	23-APR-15	THIRD
ENGINEER:	FARRUKH SYED	23-APR-15	ANGLE
APPROVED BY:	BILL SHERIDAN	23-APR-15	PROJECTION



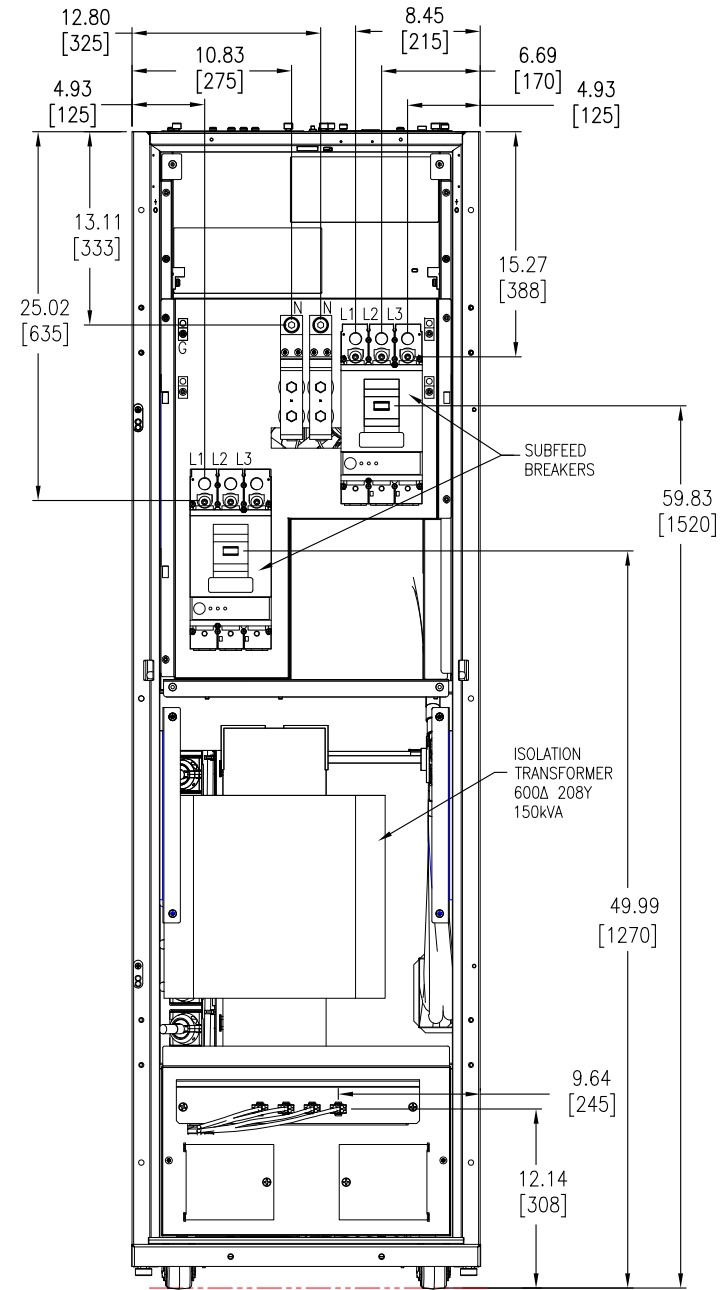
DETAIL-A



DETAIL-B
(COMMUNICATION INTERFACE)



DETAIL-C



REAR VIEW

NOTES.

1. INSTALLATION SHALL COMPLY WITH ALL APPLICABLE NATIONAL, STATE AND LOCAL CODES.
2. REFER TO PRODUCT DOCUMENTATION FOR ADDITIONAL DETAILS PRIOR TO INSTALLATION AND SITE PREPARATION WORK.
3. ALL DIMENSIONS ARE IN INCHES [MILLIMETERS].
4. ALL POWER DISTRIBUTION MODULES AND EXTENDER CABLES ARE NOT PART OF THIS SKU AND ARE ORDERED SEPARATELY. PLEASE CONTACT SCHNEIDER ELECTRIC.

THIS DRAWING AND SPECIFICATIONS HEREIN ARE THE PROPERTY OF SCHNEIDER ELECTRIC AND SHALL NOT BE COPIED, REPRODUCED OR USED IN WHOLE OR IN PART, AS THE BASIS FOR THE MANUFACTURE OR SALE OF ITEMS WITHOUT WRITTEN PERMISSION FROM SCHNEIDER ELECTRIC. THIS DRAWING IS BASED UPON LATEST AVAILABLE INFORMATION AND IS SUBJECT TO CHANGE WITHOUT NOTICE.

Schneider
Electric

TITLE: MODULAR POWER DISTRIBUTION UNIT
ISOLATION TRANSFORMER, 600V:208V
INPUT: 600V, 3PH
OUTPUT: 208V, 3PH, 72-POLES, 2-SUBFEEDS
REAR VIEW & INTERNAL-DETAILS

PROJECT: SUBMITTAL DRAWINGS SHEET 5 OF 8

DWG NO: PDPM150L6F

DRAWN BY: JAYAPRAKASH/KN 23-APR-15

ENGINEER: FARRUKH SYED 23-APR-15

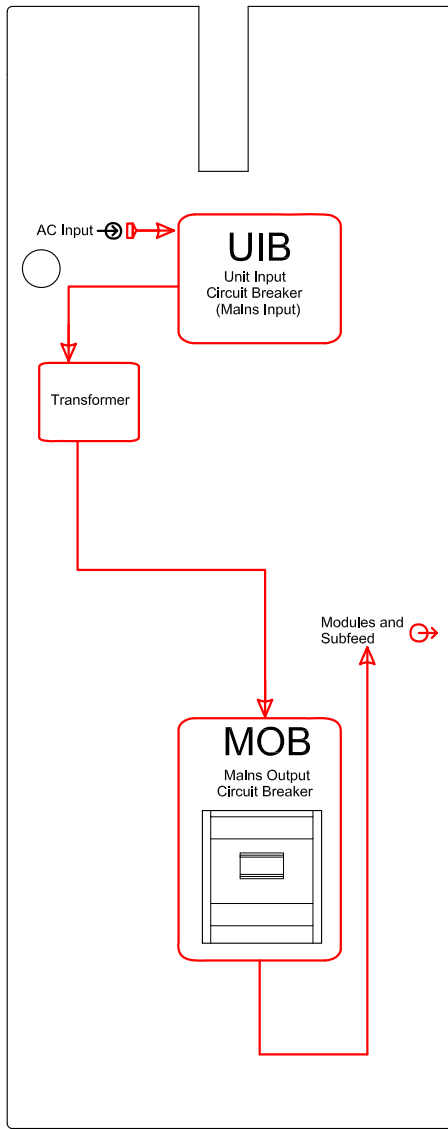
APPROVED BY: BILL SHERIDAN 23-APR-15

REV. 1

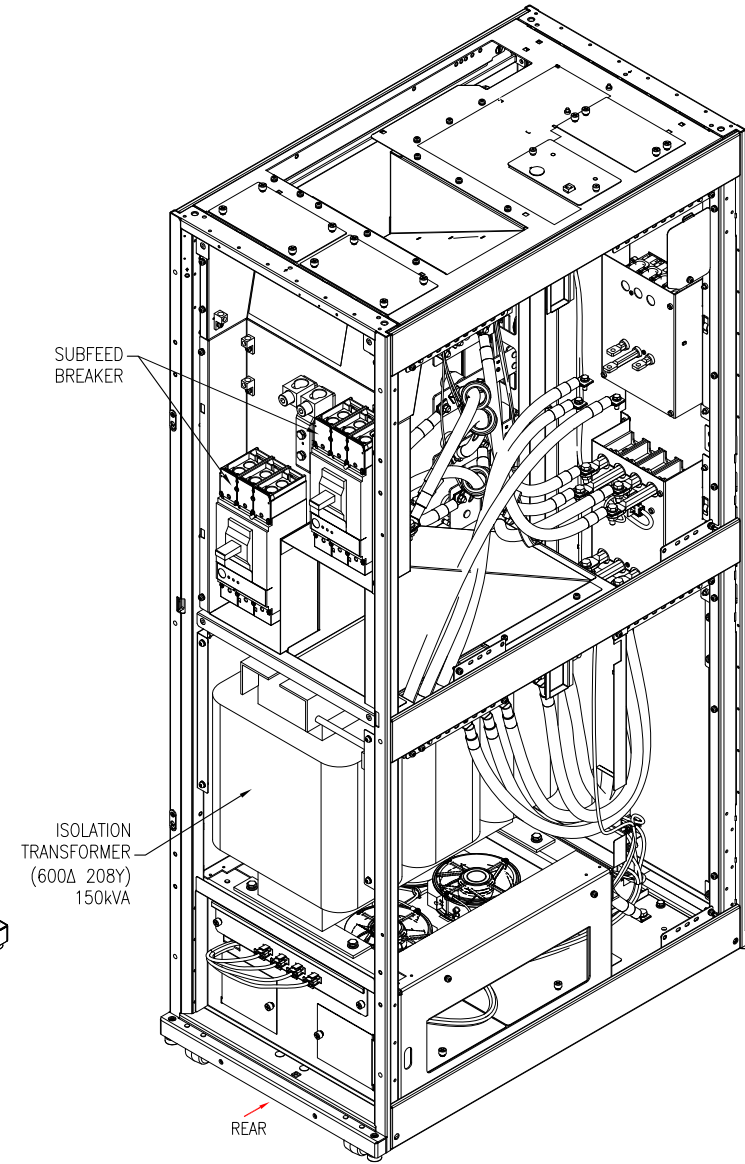
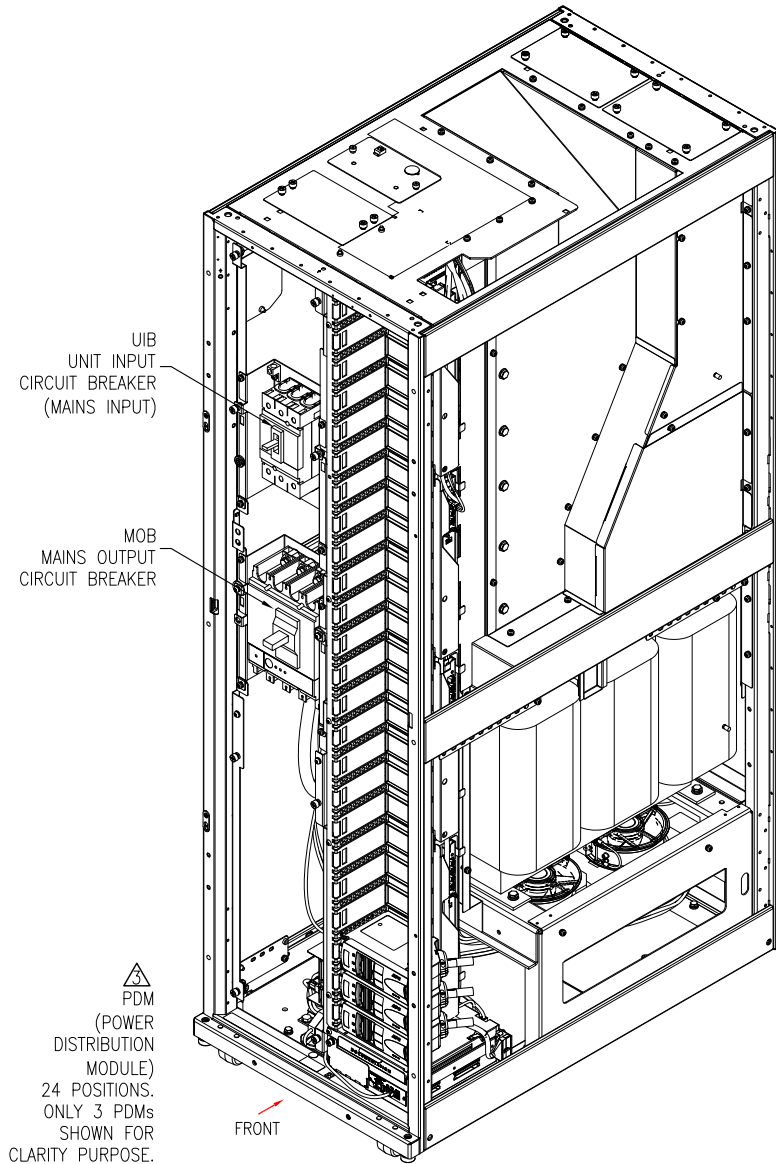
THIRD

ANGLE

PROJECTION



POWERFLOW DIAGRAM



ISOMETRIC VIEW (INTERNAL ASSEMBLY)

NOTES:

1. INSTALLATION SHALL COMPLY WITH ALL APPLICABLE NATIONAL, STATE AND LOCAL CODES.
2. REFER TO PRODUCT DOCUMENTATION FOR ADDITIONAL DETAILS PRIOR TO INSTALLATION AND SITE PREPARATION WORK.
- △3. ALL POWER DISTRIBUTION MODULES AND EXTENDER CABLES ARE NOT PART OF THIS SKU AND ARE ORDERED SEPARATELY. PLEASE CONTACT SCHNEIDER ELECTRIC.
4. SOME STRUCTURAL DETAILS HAVE BEEN OMITTED FOR THE PURPOSE OF CLARITY.

THIS DRAWING AND SPECIFICATIONS HEREIN ARE THE PROPERTY OF SCHNEIDER ELECTRIC AND SHALL NOT BE COPIED, REPRODUCED OR USED IN WHOLE OR IN PART, AS THE BASIS FOR THE MANUFACTURE OR SALE OF ITEMS WITHOUT WRITTEN PERMISSION FROM SCHNEIDER ELECTRIC. THIS DRAWING IS BASED UPON LATEST AVAILABLE INFORMATION AND IS SUBJECT TO CHANGE WITHOUT NOTICE.

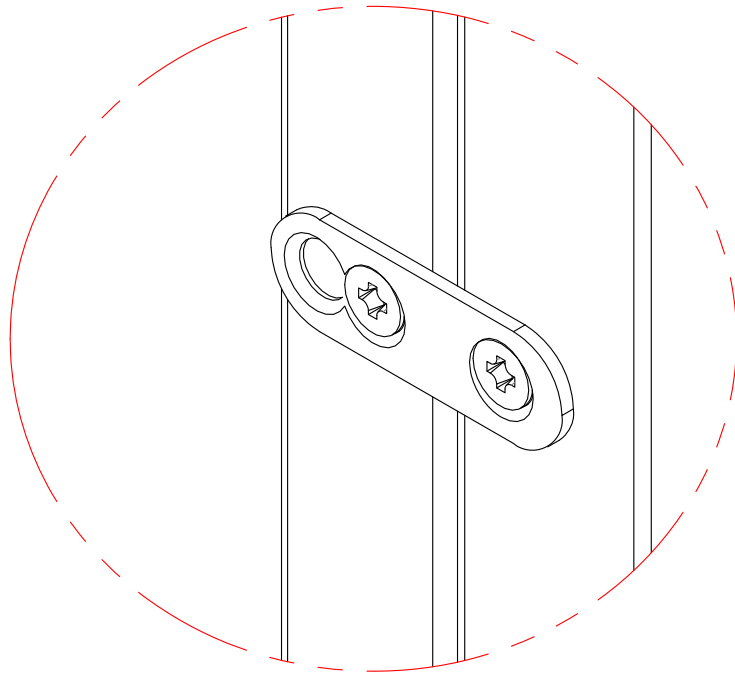
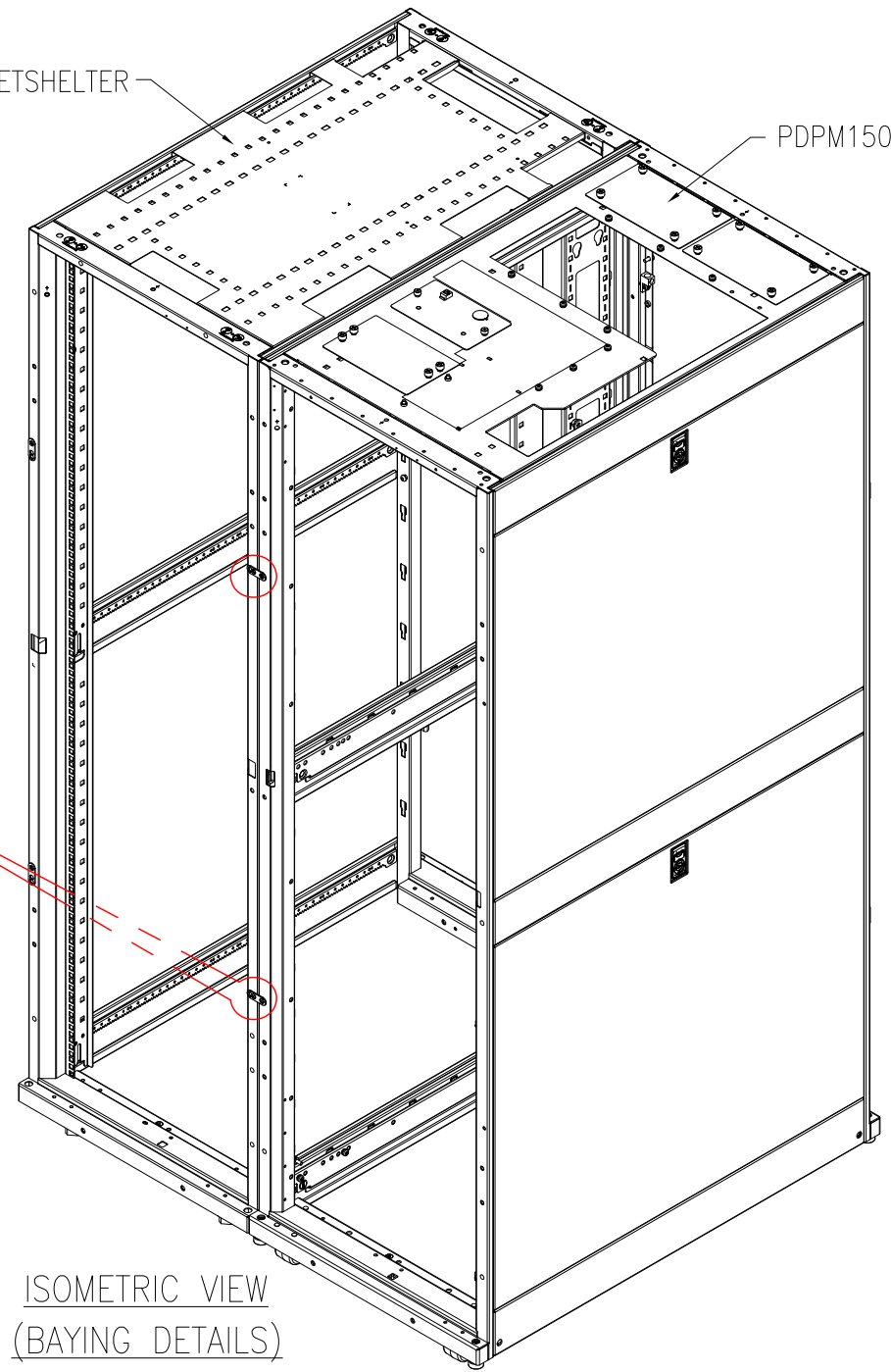


TITLE: **MODULAR POWER DISTRIBUTION UNIT
ISOLATION TRANSFORMER, 600V:208V**
INPUT: 600V, 3PH
OUTPUT: 208V, 3PH, 72-POLES, 2-SUBFEEDS
PROJECT: SUBMITTAL DRAWINGS SHEET 6 OF 8

DWG NO:	PDPM150L6F	REV.	1
DRAWN BY:	JAYAPRAKASH/KN	23-APR-15	THIRD
ENGINEER:	FARRUKH SYED	23-APR-15	ANGLE
APPROVED BY:	BILL SHERIDAN	23-APR-15	PROJECTION

NETSHELTER

PDPM150L6F



BAYING BRACKETS
(2 PLACES)

ISOMETRIC VIEW
(BAYING DETAILS)

NOTES:

1. INSTALLATION SHALL COMPLY WITH ALL APPLICABLE NATIONAL, STATE AND LOCAL CODES.
2. REFER TO PRODUCT DOCUMENTATION FOR ADDITIONAL DETAILS PRIOR TO INSTALLATION AND SITE PREPARATION WORK.
3. SOME STRUCTURAL DETAILS HAVE BEEN OMITTED FOR THE PURPOSE OF CLARITY.

THIS DRAWING AND SPECIFICATIONS HEREIN ARE THE PROPERTY OF SCHNEIDER ELECTRIC AND SHALL NOT BE COPIED, REPRODUCED OR USED IN WHOLE OR IN PART, AS THE BASIS FOR THE MANUFACTURE OR SALE OF ITEMS WITHOUT WRITTEN PERMISSION FROM SCHNEIDER ELECTRIC. THIS DRAWING IS BASED UPON LATEST AVAILABLE INFORMATION AND IS SUBJECT TO CHANGE WITHOUT NOTICE.



TITLE: MODULAR POWER DISTRIBUTION UNIT
ISOLATION TRANSFORMER, 600V:208V
INPUT: 600V, 3PH
OUTPUT: 208V, 3PH, 72-POLES, 2-SUBFEEDS
BAYING DETAILS

PROJECT: SUBMITTAL DRAWINGS SHEET 7 OF 8

DWG NO: PDPM150L6F

DRAWN BY: JAYAPRAKASH 11-SEP-12

ENGINEER: JACK LU 09-JAN-13

APPROVED BY: JIE ZHU 09-JAN-13

REV. 0

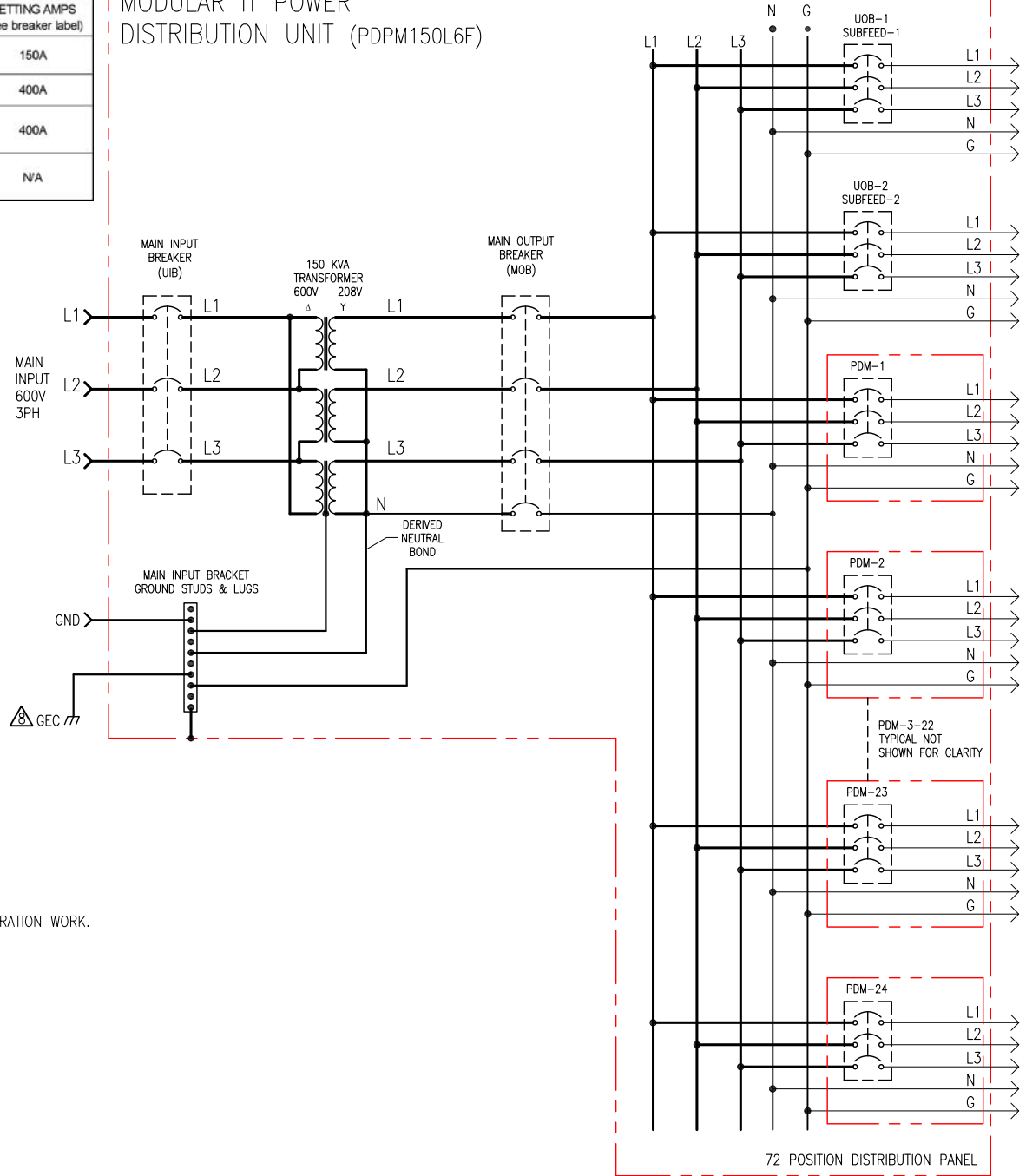
THIRD

ANGLE

PROJECTION

DEVICE	RATING (100% Rated)	TYPE	MAKE	MODEL	RATED SHORT CIRCUIT CURRENT	BREAKER CURRENT SETTING AMPS (See breaker label)
UIB	150A, 600V	3 POLE BREAKER	MERLIN GERIN	JLF36150CYE (100% Rated)	50kA SYMMETRICAL	150A
MOB	600A, 480V	4 POLE BREAKER	SQUARE-D	LJF44600WU33X (100% Rated)	65kAIC@480V	400A
SUBFEED BREAKER (UOB)	400A, 600V	3 POLE BREAKER	SQUARE-D	LJF36400CU33X (100% Rated)	65kAIC@480V	400A
MODULE-X	400V	POWER DISTRIBUTION MODULE	SCHNEIDER ELECTRIC	SEE NOTE 7	10kAIC@480V	N/A

MODULAR IT POWER DISTRIBUTION UNIT (PDPM150L6F)



- NOTES:**
- INSTALLATION SHALL COMPLY WITH ALL APPLICABLE NATIONAL, STATE AND LOCAL CODES.
 - REFER TO [PRODUCT DOCUMENTATION](#) FOR ADDITIONAL DETAILS PRIOR TO INSTALLATION AND SITE PREPARATION WORK.
 - AC SOURCE TO BE 600VAC 3PH 3 WIRE + GROUND + GEC
(CONTACT SCHNEIDER ELECTRIC IF OTHER).
 - RACK FRAME AND SKINS ARE ELECTRICALLY CONNECTED AND TIED TO CHASSIS GROUND.
 - TRANSFORMER BASE IS GROUNDED THROUGH RACK FRAME.
 - ALL AC POWER CABLING TO BE 600V RATED, 3 WIRE + GROUND + GEC (INPUT CABLE),
3WIRE + NEUTRAL + GROUND (OUTPUT CABLE)
 - ALL POWER DISTRIBUTION MODULES ARE NOT PART OF THIS SKU AND
ARE ORDERED SEPARATELY, MAXIMUM 24 MODULES PER SKU. REFER TO [COMPATIBILITY CHART](#) FOR
POWER DISTRIBUTION MODULE OPTIONS AND THEIR BREAKER RATINGS .
 - THIS SYSTEM SHALL BE INSTALLED AS A SEPARATELY DERIVED SYSTEM
IN ACCORDANCE WITH LOCAL AND NATIONAL CODES.
THE GROUNDING ELECTRODE CONDUCTOR (GEC) IS PROVIDED BY OTHERS.

THIS DRAWING AND SPECIFICATIONS HEREIN ARE THE PROPERTY OF SCHNEIDER ELECTRIC AND SHALL NOT BE COPIED, REPRODUCED OR USED IN WHOLE OR IN PART, AS THE BASIS FOR THE MANUFACTURE OR SALE OF ITEMS WITHOUT WRITTEN PERMISSION FROM SCHNEIDER ELECTRIC. THIS DRAWING IS BASED UPON LATEST AVAILABLE INFORMATION AND IS SUBJECT TO CHANGE WITHOUT NOTICE.



TITLE: APC144kW MODULAR PDU
ISOLATION TRANSFORMER, 600V/208V
Input: 600V 3PH 60HZ
Output: 208V 3PH 60HZ, 72 POLE, 2 SUBFEED
FIVE LINE DIAGRAM

PROJECT: SUBMITTAL DRAWINGS SHEET 8 OF 8

DWG NO: PDPM150L6F REV. 2
DRAWN BY: C KRISHNA/S CUNHA/KN 23-APR-15 ANGLE
ENGINEER: FERRUKH SYED 23-APR-15 PROJECTION
APPROVED BY: BILL SHERIDAN 23-APR-15 N/A