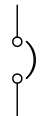

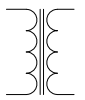


# CONFIGURABLE POWER DISTRIBUTION, InfraStruxure PDU 60kW 480V/208V

Sheet No.	Component /Detail	Description
1	Draw ing Guide	InfraStruxure PDU 60kW 480V/208V
2	Specification	InfraStruxure PDU 60kW 480V/208V
3-6	Mechanical Layouts	InfraStruxure PDU 60kW 480V/208V
7-11	Internal View s & Details	InfraStruxure PDU 60kW 480V/208V
12-13	System One Line / Five line Diagram	InfraStruxure PDU 60kW 480V/208V

LEGEND	
SYMBOL	DESCRIPTION
	CIRCUIT BREAKER
	SWITCH
	TRANSFORMER

THIS DRAWING AND SPECIFICATIONS HEREIN ARE THE PROPERTY OF SCHNEIDER ELECTRIC AND SHALL NOT BE COPIED, REPRODUCED OR USED IN WHOLE OR IN PART, AS THE BASIS FOR THE MANUFACTURE OR SALE OF ITEMS WITHOUT WRITTEN PERMISSION FROM SCHNEIDER ELECTRIC. THIS DRAWING IS BASED UPON LATEST AVAILABLE INFORMATION AND IS SUBJECT TO CHANGE WITHOUT NOTICE.



TITLE: CONFIGURABLE POWER DISTRIBUTION  
 InfraStruxure PDU 60kW  
 Input: 480V, 3PH, 60Hz  
 Output: 208V, 3PH, 60Hz  
 DRAWING GUIDE

PROJECT: DRAWINGS SHEET 1 OF 13

DWG NO: PD60G6FK1 REV. 1

DRAWN BY:	JAYAPRAKASH	18-MAY-20	ANGLE
ENGINEER:	EMANUEL MARTNEZ	18-MAY-20	PROJECTION
APPROVED BY:	VICTOR ESPINOSA	18-MAY-20	N/A

# CONFIGURABLE POWER DISTRIBUTION - SPECIFICATIONS

## 1. AC Input

- 1.1 Nominal voltage : 480V 3PH WYE, 3W+G (provided by others)
- 1.2 Frequency : 60Hz
- 1.3 Input Circuit Breaker : 90A
- 1.4 Nominal current : 72A
- 1.5 Main Input conductor minimum size : #3/0 AWG (final conductor size shall be determined per local or national codes)

## 2. AC Output

- 2.1 Nominal voltage : 208V 3PH 4W+G
- 2.2 Nominal current : 167A
- 2.3 Full Load rating : 60kW
- 2.4 Distribution Panel : 2 x 225A, 42-position
- 2.5 Distribution Breaker Size : 150A (Max)

## 3. ENVIRONMENTS

- 3.1 The assembly is made for an ambient temperature for operation of : 0°C to 40°C.
- 3.2 The assembly is made for an ambient temperature for storage of : 0°C to 45°C.

## 4. ENCLOSURE

- 4.1 The assembly material is steel with surface coating.
- 4.2 The assembly is made for Indoor floor Installation.

## 5. CONNECTIONS

- 5.1 Incoming and outgoing cables to be connected to terminals in component section.
- 5.2 Input cable entry is through side, top or bottom of the unit.

### NOTES:

1. INSTALLATION SHALL COMPLY WITH ALL APPLICABLE NATIONAL, STATE AND LOCAL CODES.
2. PLEASE REFER TO PRODUCT MANUALS FOR ADDITIONAL DETAILS PRIOR TO INSTALLATION AND SITE PREPARATION WORK.

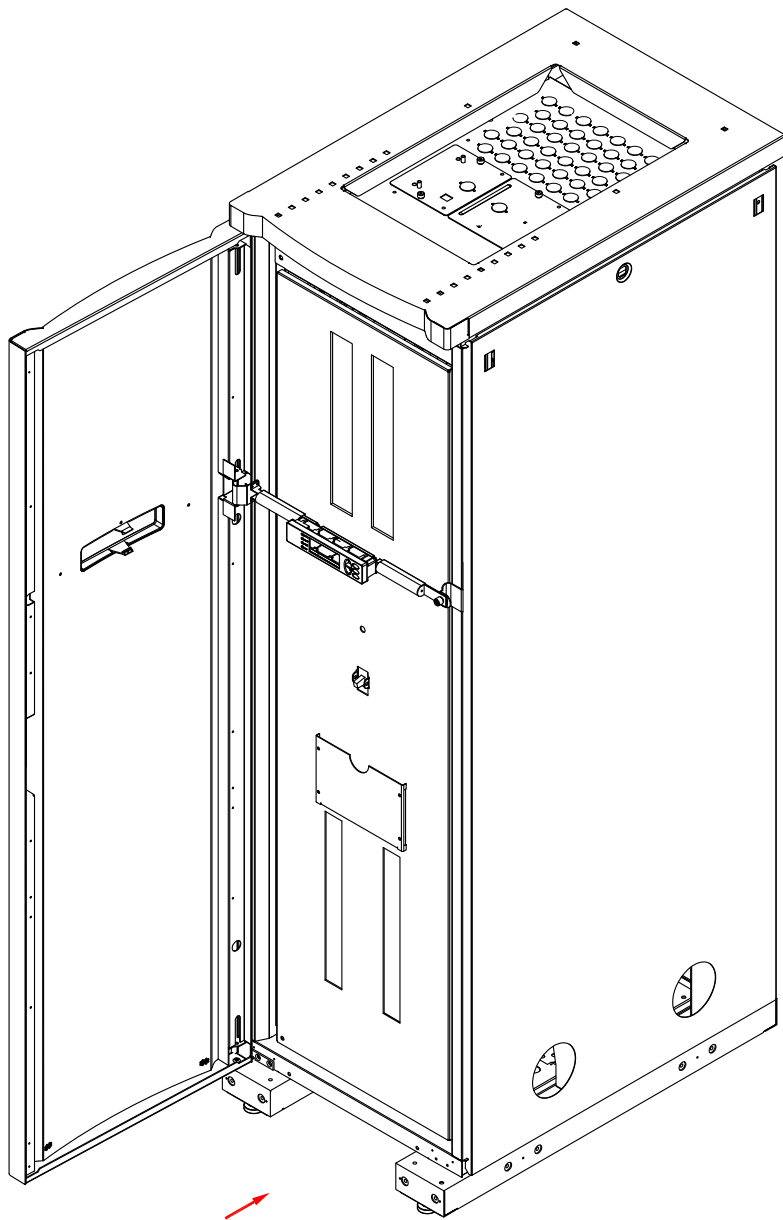
THIS DRAWING AND SPECIFICATIONS HEREIN ARE THE PROPERTY OF SCHNEIDER ELECTRIC AND SHALL NOT BE COPIED, REPRODUCED OR USED IN WHOLE OR IN PART, AS THE BASIS FOR THE MANUFACTURE OR SALE OF ITEMS WITHOUT WRITTEN PERMISSION FROM SCHNEIDER ELECTRIC. THIS DRAWING IS BASED UPON LATEST AVAILABLE INFORMATION AND IS SUBJECT TO CHANGE WITHOUT NOTICE.



TITLE: CONFIGURABLE POWER DISTRIBUTION  
InfraStruxure PDU 60kW  
Input: 480V, 3PH, 60Hz  
Output: 208V, 3PH, 60Hz  
SPECIFICATIONS

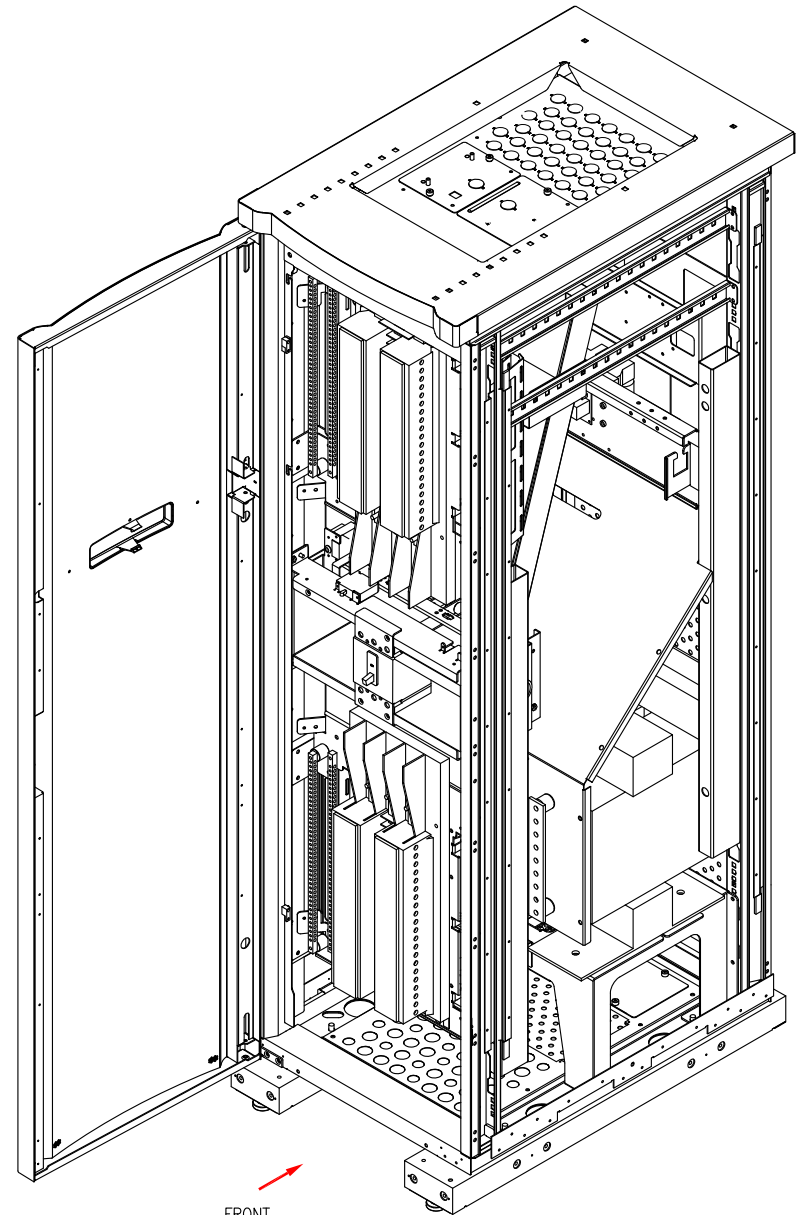
PROJECT: DRAWINGS SHEET 2 OF 13

DWG NO:	PD60G6FK1	REV.	2
DRAWN BY:	JAYAPRAKASH/S CUNHA	18-MAY-20	ANGLE
ENGINEER:	EMANUEL MARTINEZ	18-MAY-20	PROJECTION
APPROVED BY:	VICTOR ESPINOSA	18-MAY-20	N/A



FRONT

ISOMETRIC VIEW



FRONT

ISOMETRIC VIEW  
(INSIDE PANELS REMOVED)

**NOTES:**

1. INSTALLATION SHALL COMPLY WITH ALL APPLICABLE NATIONAL, STATE AND LOCAL CODES.
2. PLEASE REFER TO PRODUCT MANUALS FOR ADDITIONAL DETAILS PRIOR TO INSTALLATION AND SITE PREPARATION WORK.

THIS DRAWING AND SPECIFICATIONS HEREIN ARE THE PROPERTY OF SCHNEIDER ELECTRIC AND SHALL NOT BE COPIED, REPRODUCED OR USED IN WHOLE OR IN PART, AS THE BASIS FOR THE MANUFACTURE OR SALE OF ITEMS WITHOUT WRITTEN PERMISSION FROM SCHNEIDER ELECTRIC. THIS DRAWING IS BASED UPON LATEST AVAILABLE INFORMATION AND IS SUBJECT TO CHANGE WITHOUT NOTICE.



TITLE: CONFIGURABLE POWER DISTRIBUTION  
 InfraStruxure PDU 60kW  
 Input: 480V, 3PH, 60Hz  
 Output: 208V, 3PH, 60Hz  
 ISOMETRIC VIEW

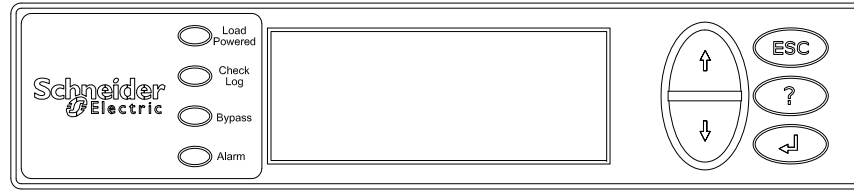
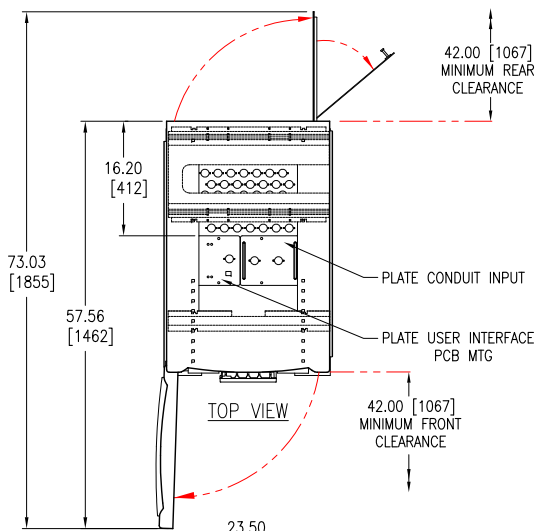
DWG NO: PD60G6FK1 REV. 1

DRAWN BY: JAYAPRAKASH 18-MAY-20 THIRD

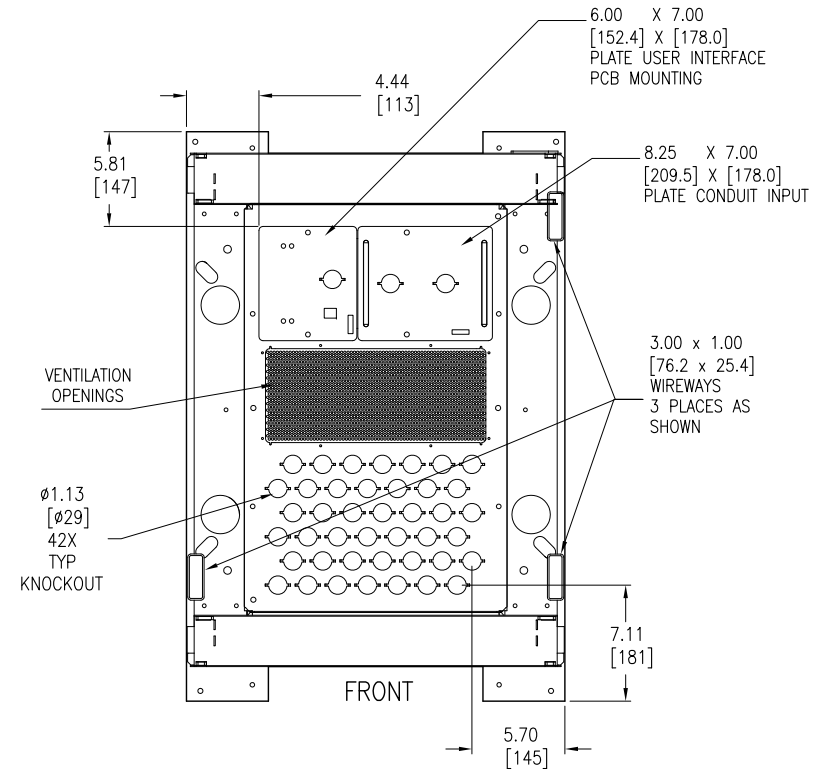
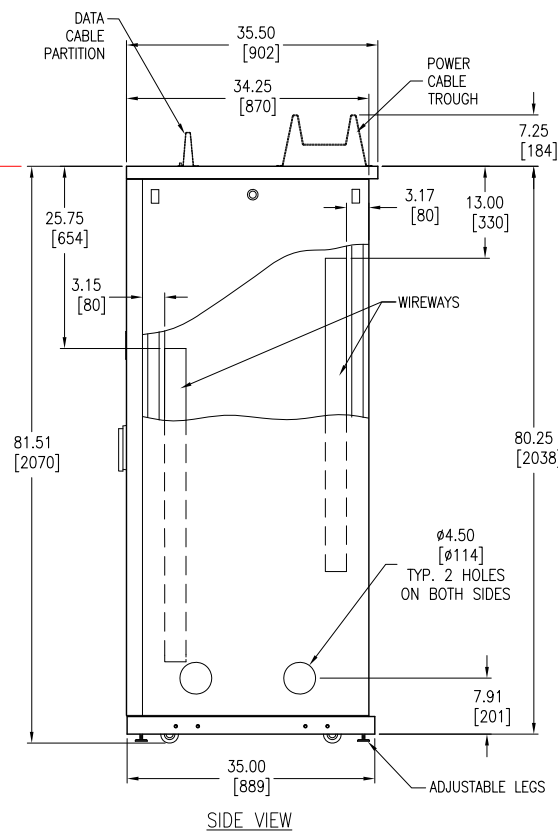
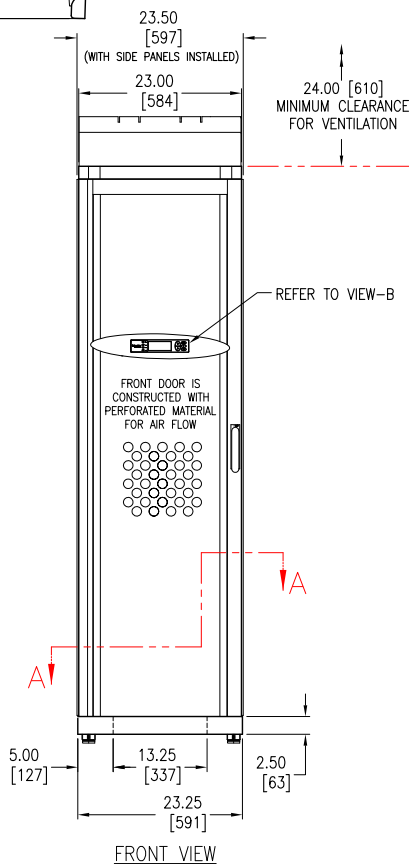
ENGINEER: EMANUEL MARTINEZ 18-MAY-20 ANGLE

PROJECT: DRAWINGS SHEET 3 OF 13

APPROVED BY: VICTOR ESPINOSA 18-MAY-20 PROJECTION



- NOTES:
1. INSTALLATION SHALL COMPLY WITH ALL APPLICABLE NATIONAL, STATE AND LOCAL CODES.
  2. PLEASE REFER TO PRODUCT MANUALS FOR ADDITIONAL DETAILS PRIOR TO INSTALLATION AND SITE PREPARATION WORK.
  3. ALL DIMENSIONS ARE IN INCHES [MILLIMETERS], UNLESS OTHERWISE SPECIFIED.
  4. CABLE ENTRY IS FROM SIDE, TOP OR BOTTOM OF THE UNIT.
  5. FRONT AND REAR ACCESS ARE REQUIRED FOR SERVICE.
  6. WEIGHT OF THE UNIT IS 1012 lb [460 kg].
  7. FLOOR LOADING: 175 lb/ft<sup>2</sup> [853 kg/meter<sup>2</sup>].
  8. OPERATING TEMPERATURE: 32-104°F [0-40°C].
  9. DATA CABLE PARTITION AND POWER CABLE TROUGH ARE NOT PART OF THE SKU.
  10. COLOR: BLACK.



THIS DRAWING AND SPECIFICATIONS HEREIN ARE THE PROPERTY OF SCHNEIDER ELECTRIC AND SHALL NOT BE COPIED, REPRODUCED OR USED IN WHOLE OR IN PART, AS THE BASIS FOR THE MANUFACTURE OR SALE OF ITEMS WITHOUT WRITTEN PERMISSION FROM SCHNEIDER ELECTRIC. THIS DRAWING IS BASED UPON LATEST AVAILABLE INFORMATION AND IS SUBJECT TO CHANGE WITHOUT NOTICE.

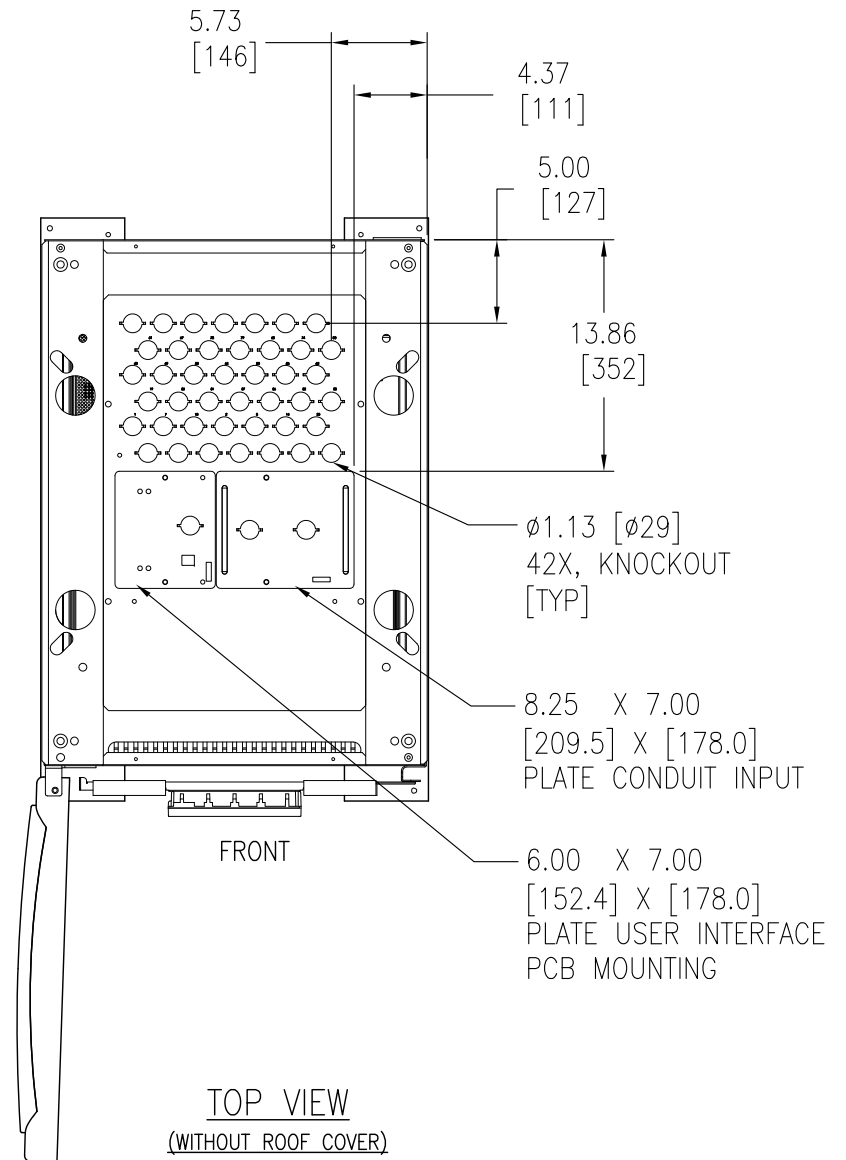
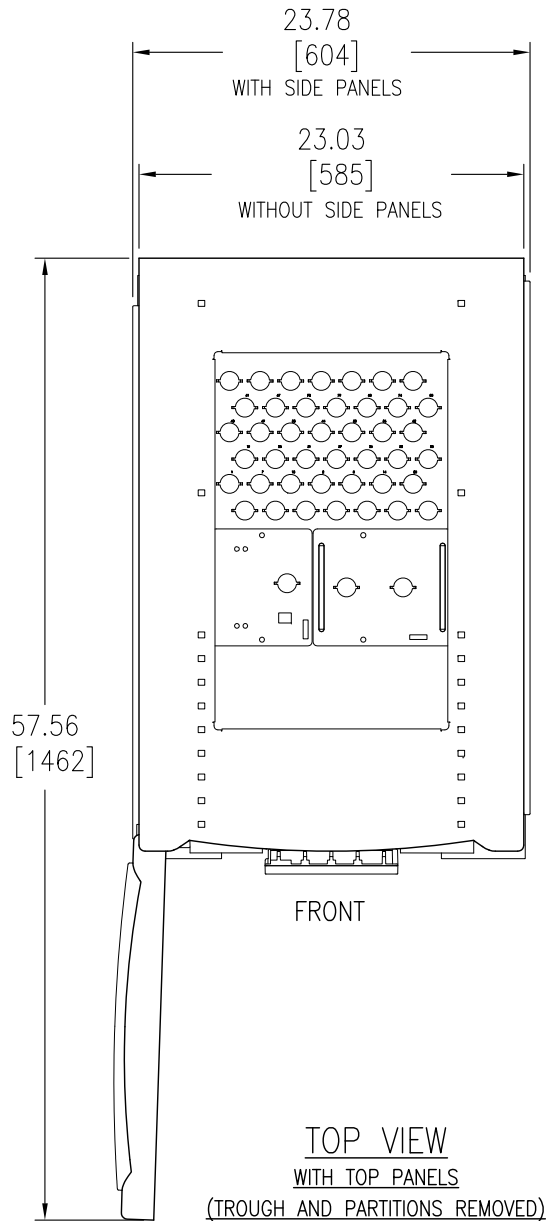


TITLE: CONFIGURABLE POWER DISTRIBUTION  
InfraStruxure PDU 60kW  
Input: 480V, 3PH, 60Hz  
Output: 208V, 3PH, 60Hz  
GENERAL ARRANGEMENT

PROJECT: DRAWINGS SHEET 4 OF 13

DWG NO: PD60G6FK1 REV. 1

DRAWN BY:	JAYAPRAKASH	18-MAY-20	THIRD
ENGINEER:	EMANUEL MARTINEZ	18-MAY-20	ANGLE
APPROVED BY:	VICTOR ESPINOSA	18-MAY-20	PROJECTION



**NOTES:**

1. INSTALLATION SHALL COMPLY WITH ALL APPLICABLE NATIONAL, STATE AND LOCAL CODES.
2. PLEASE REFER TO PRODUCT MANUALS FOR ADDITIONAL DETAILS PRIOR TO INSTALLATION AND SITE PREPARATION WORK.
3. ALL DIMENSIONS ARE IN INCHES [MILLIMETERS], UNLESS OTHERWISE SPECIFIED.

THIS DRAWING AND SPECIFICATIONS HEREIN ARE THE PROPERTY OF SCHNEIDER ELECTRIC AND SHALL NOT BE COPIED, REPRODUCED OR USED IN WHOLE OR IN PART, AS THE BASIS FOR THE MANUFACTURE OR SALE OF ITEMS WITHOUT WRITTEN PERMISSION FROM SCHNEIDER ELECTRIC. THIS DRAWING IS BASED UPON LATEST AVAILABLE INFORMATION AND IS SUBJECT TO CHANGE WITHOUT NOTICE.

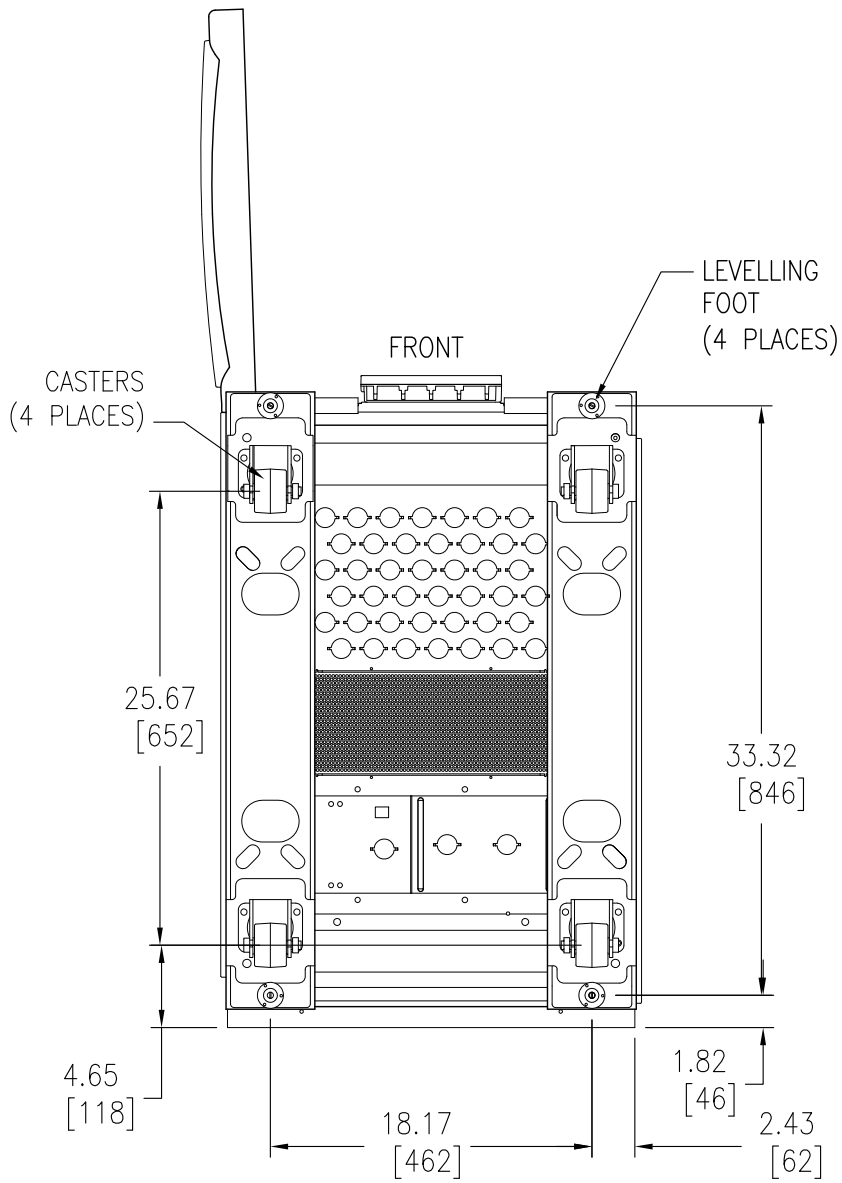


TITLE: CONFIGURABLE POWER DISTRIBUTION  
InfraStruxure PDU 60kW  
Input: 480V, 3PH, 60Hz  
Output: 208V, 3PH, 60Hz  
TOP VIEWS

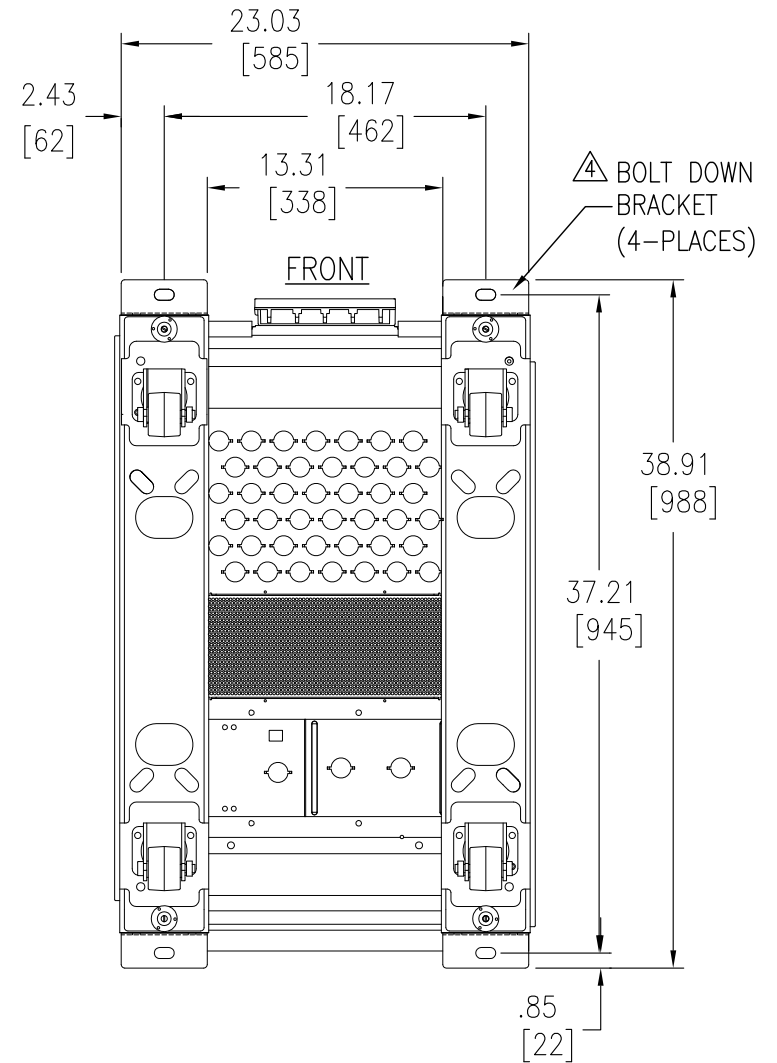
PROJECT: DRAWINGS SHEET 5 OF 13

DWG NO: PD60G6FK1 REV. 1

DRAWN BY:	JAYAPRAKASH	18-MAY-20	THIRD
ENGINEER:	EMANUEL MARTNEZ	18-MAY-20	ANGLE
APPROVED BY:	VICTOR ESPINOSA	18-MAY-20	PROJECTION



BOTTOM VIEW



BOTTOM VIEW  
FRONT & REAR DOOR NOT SHOWN  
(ANCHORING DETAILS WITH BOLT DOWN BRACKETS)

NOTES:

1. INSTALLATION SHALL COMPLY WITH ALL APPLICABLE NATIONAL, STATE AND LOCAL CODES.
2. PLEASE REFER TO PRODUCT MANUALS FOR ADDITIONAL DETAILS PRIOR TO INSTALLATION AND SITE PREPARATION WORK.
3. ALL DIMENSIONS ARE IN INCHES [MILLIMETERS], UNLESS OTHERWISE SPECIFIED.

△4. TO STABILIZE THE ENCLOSURE (IF IT IS NOT JOINED WITH ANOTHER COMPONENT) USE THE AR8112BLK BOLT-DOWN KIT. ATTACH THE BRACKETS TO THE UNIT AS SHOWN. USE CODE COMPLIANT FASTENERS TO SECURE THE UNIT TO THE FLOOR.

THIS DRAWING AND SPECIFICATIONS HEREIN ARE THE PROPERTY OF SCHNEIDER ELECTRIC AND SHALL NOT BE COPIED, REPRODUCED OR USED IN WHOLE OR IN PART, AS THE BASIS FOR THE MANUFACTURE OR SALE OF ITEMS WITHOUT WRITTEN PERMISSION FROM SCHNEIDER ELECTRIC. THIS DRAWING IS BASED UPON LATEST AVAILABLE INFORMATION AND IS SUBJECT TO CHANGE WITHOUT NOTICE.



TITLE: CONFIGURABLE POWER DISTRIBUTION  
InfraStruxure PDU 60kW  
Input: 480V, 3PH, 60Hz  
Output: 208V, 3PH, 60Hz  
BOTTOM VIEW & ANCHORING DETAILS

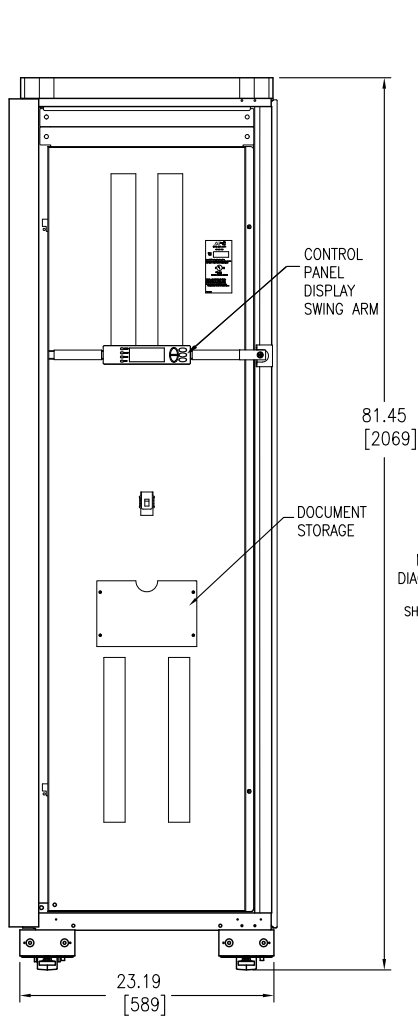
PROJECT: DRAWINGS SHEET 6 OF 13

DWG NO: PD60G6FK1 REV. 1

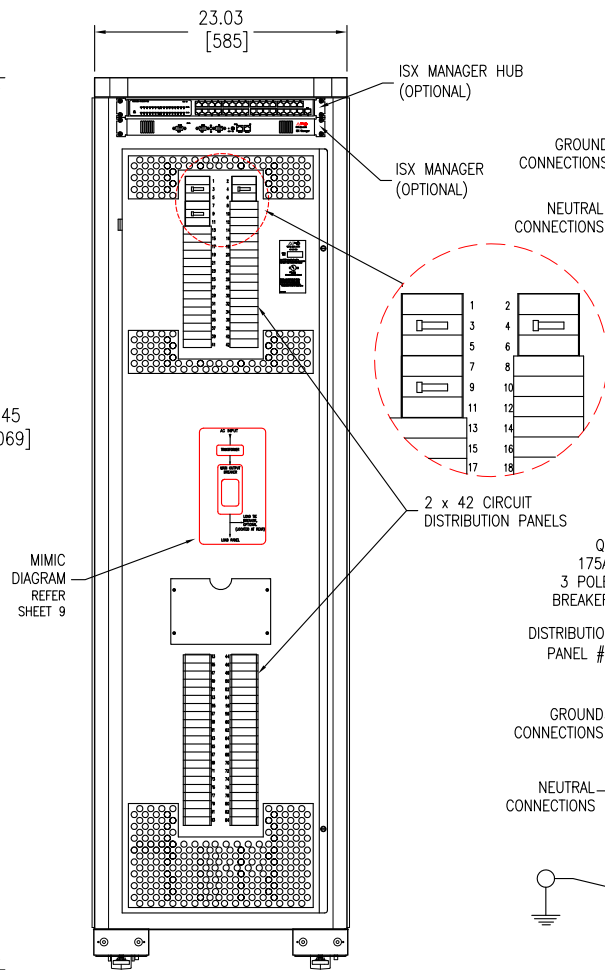
DRAWN BY: JAYAPRAKASH 18-MAY-20 THIRD

ENGINEER: EMANUEL MARTINEZ 18-MAY-20 ANGLE

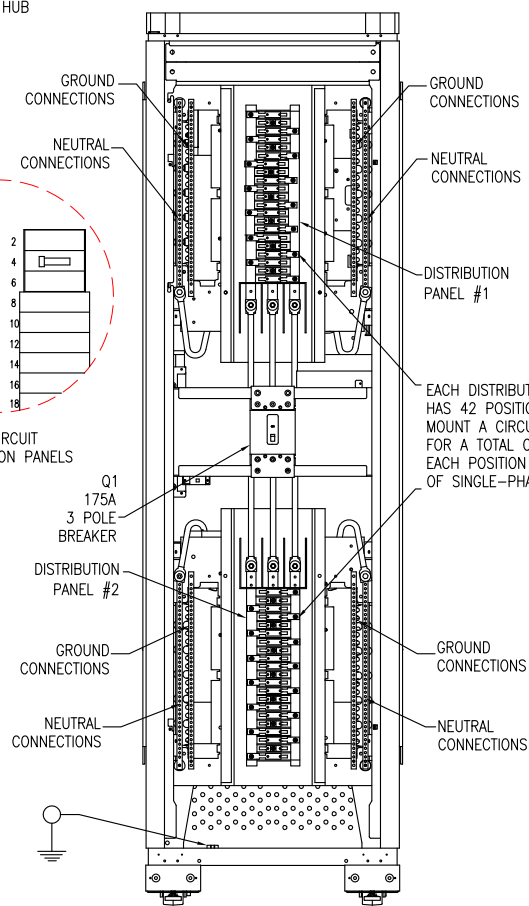
APPROVED BY: VICTOR ESPINOSA 18-MAY-20 PROJECTION



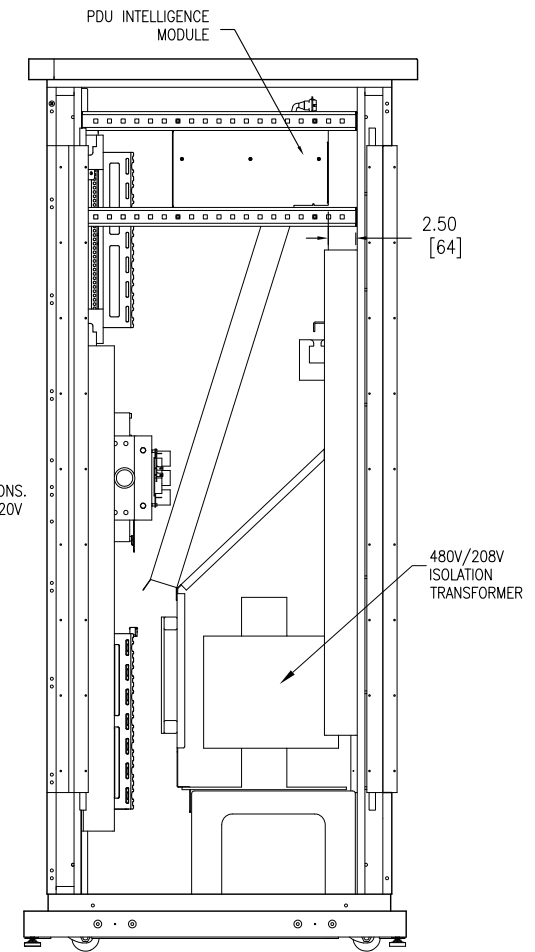
FRONT VIEW  
FRONT DOOR OPENED



FRONT VIEW  
FRONT DOOR REMOVED



FRONT VIEW  
DOOR AND DEAD FRONT PANEL REMOVED



RIGHT SIDE VIEW  
SIDE PANEL REMOVED

NOTES:

1. INSTALLATION SHALL COMPLY WITH ALL APPLICABLE NATIONAL, STATE AND LOCAL CODES.
2. PLEASE REFER TO PRODUCT MANUALS FOR ADDITIONAL DETAILS PRIOR TO INSTALLATION AND SITE PREPARATION WORK.
3. ALL DIMENSIONS ARE IN INCHES [MILLIMETERS], UNLESS OTHERWISE SPECIFIED.
4. SOME STRUCTURAL DETAILS HAVE BEEN OMITTED FOR THE PURPOSE OF CLARITY.

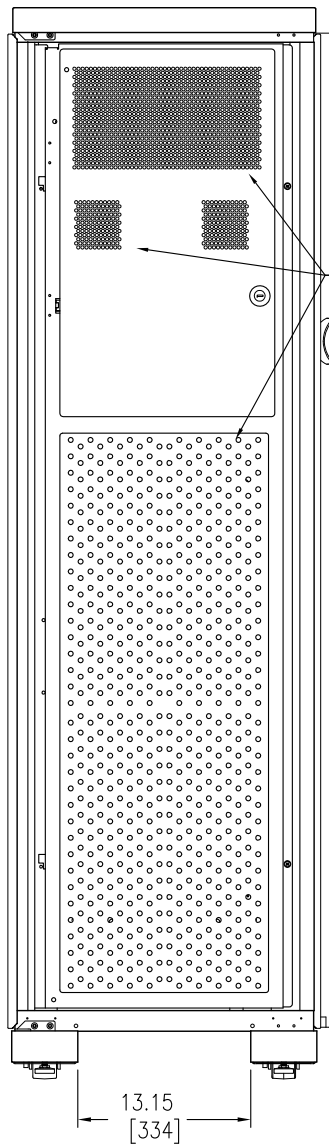
THIS DRAWING AND SPECIFICATIONS HEREIN ARE THE PROPERTY OF SCHNEIDER ELECTRIC AND SHALL NOT BE COPIED, REPRODUCED OR USED IN WHOLE OR IN PART, AS THE BASIS FOR THE MANUFACTURE OR SALE OF ITEMS WITHOUT WRITTEN PERMISSION FROM SCHNEIDER ELECTRIC. THIS DRAWING IS BASED UPON LATEST AVAILABLE INFORMATION AND IS SUBJECT TO CHANGE WITHOUT NOTICE.



TITLE: CONFIGURABLE POWER DISTRIBUTION  
 InfraStruxure PDU 60kW  
 Input: 480V, 3PH, 60Hz  
 Output: 208V, 3PH, 60Hz  
 INTERNAL VIEW

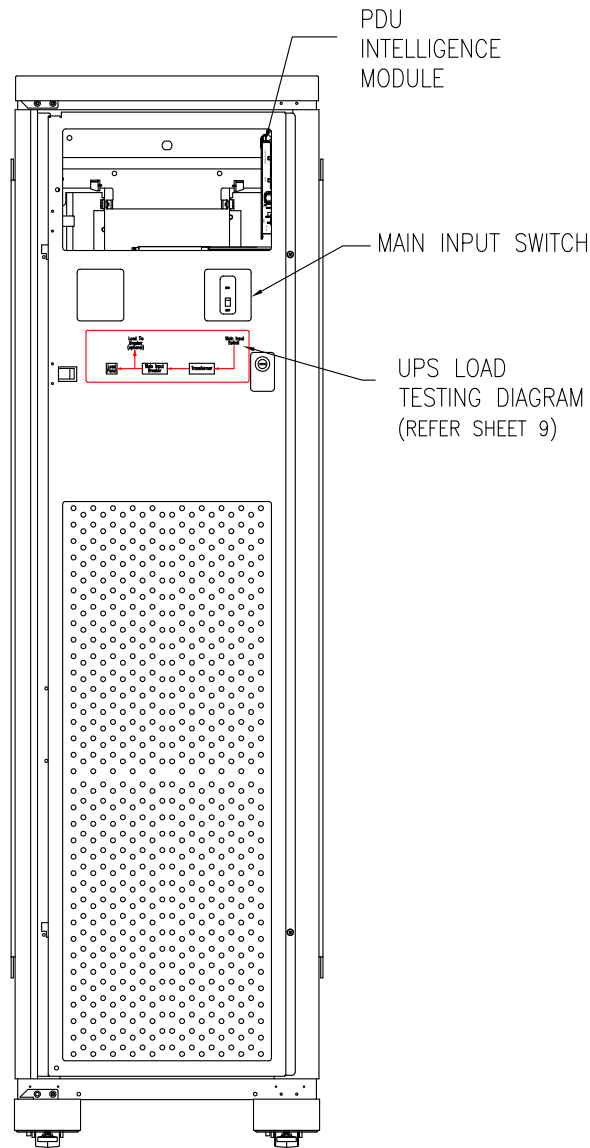
PROJECT: DRAWINGS SHEET 7 OF 13

DWG NO:	PD60G6FK1	REV.	1
DRAWN BY:	JAYAPRAKASH	18-MAY-20	THIRD
ENGINEER:	EMANUEL MARTNEZ	18-MAY-20	ANGLE
APPROVED BY:	VICTOR ESPINOSA	18-MAY-20	PROJECTION

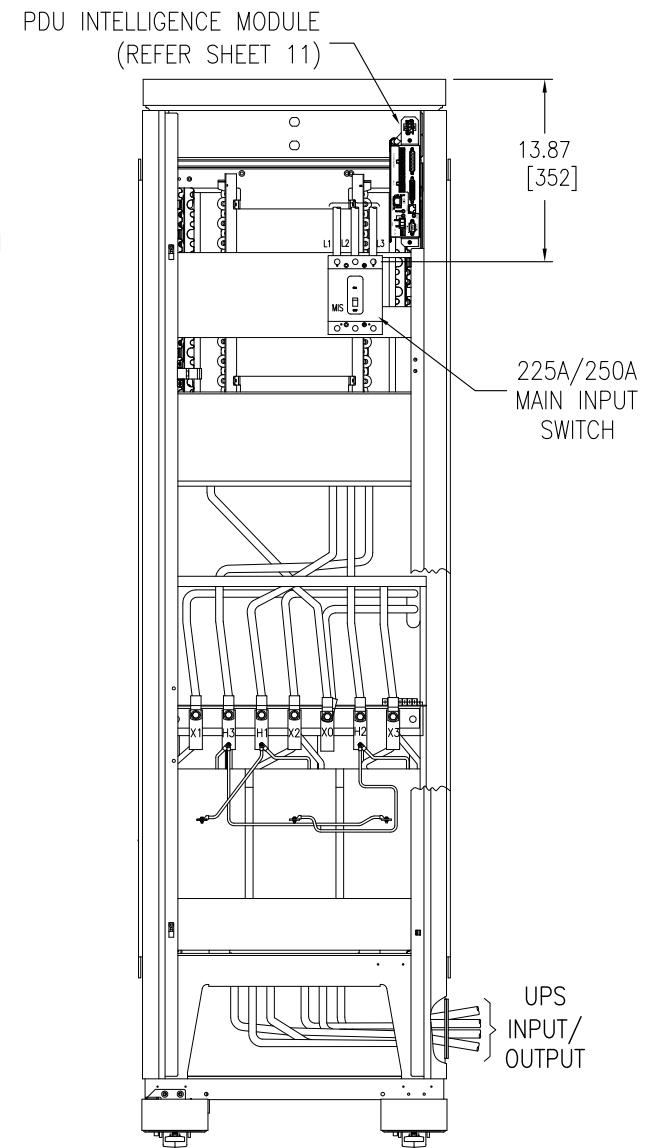


REAR VIEW  
REAR DOORS REMOVED

PARTS OF UPPER PANEL AND LOWER PANEL ARE CONSTRUCTED WITH PERFORATED MATERIAL FOR AIR FLOW



REAR VIEW  
TOP DOOR REMOVED



REAR VIEW  
PANELS & DOORS REMOVED

**NOTES:**

1. INSTALLATION SHALL COMPLY WITH ALL APPLICABLE NATIONAL, STATE AND LOCAL CODES.
2. PLEASE REFER TO PRODUCT MANUALS FOR ADDITIONAL DETAILS PRIOR TO INSTALLATION AND SITE PREPARATION WORK.
3. ALL DIMENSIONS ARE IN INCHES [MILLIMETERS], UNLESS OTHERWISE SPECIFIED.
4. SOME STRUCTURAL DETAILS HAVE BEEN OMITTED FOR THE PURPOSE OF CLARITY.

THIS DRAWING AND SPECIFICATIONS HEREIN ARE THE PROPERTY OF SCHNEIDER ELECTRIC AND SHALL NOT BE COPIED, REPRODUCED OR USED IN WHOLE OR IN PART, AS THE BASIS FOR THE MANUFACTURE OR SALE OF ITEMS WITHOUT WRITTEN PERMISSION FROM SCHNEIDER ELECTRIC. THIS DRAWING IS BASED UPON LATEST AVAILABLE INFORMATION AND IS SUBJECT TO CHANGE WITHOUT NOTICE.



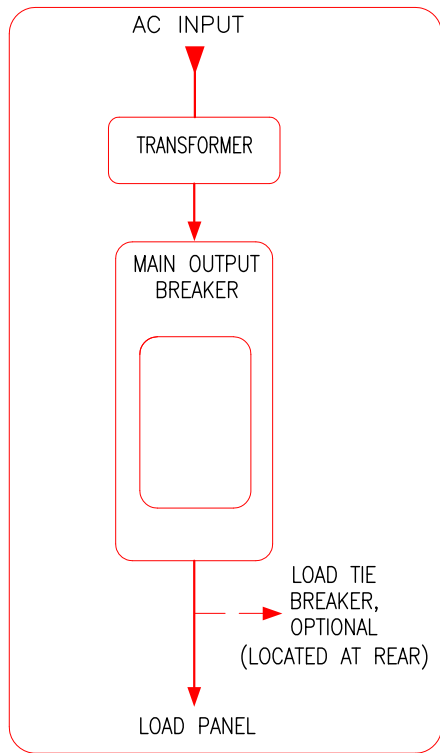
TITLE: CONFIGURABLE POWER DISTRIBUTION  
InfraStruxure PDU 60kW  
Input: 480V, 3PH, 60Hz  
Output: 208V, 3PH, 60Hz  
REAR VIEWS

PROJECT: DRAWINGS SHEET 8 OF 13

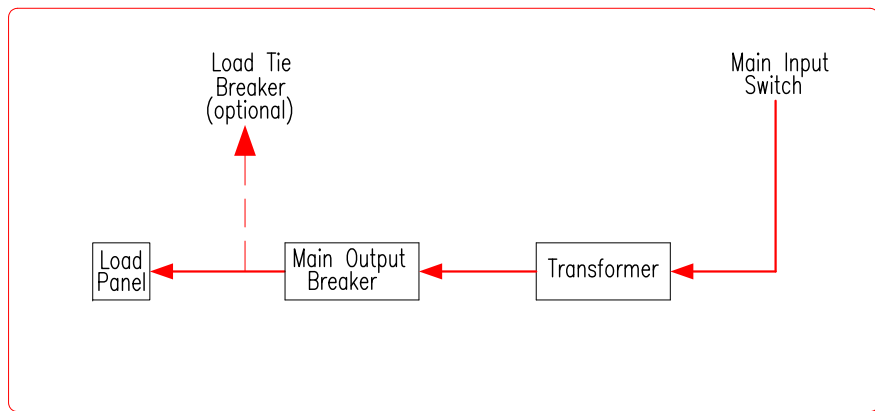
DWG NO: PD60G6FK1 REV. 1

DRAWN BY:	JAYAPRAKASH	18-MAY-20	THIRD
ENGINEER:	EMANUEL MARTINEZ	18-MAY-20	ANGLE
APPROVED BY:	VICTOR ESPINOSA	18-MAY-20	PROJECTION

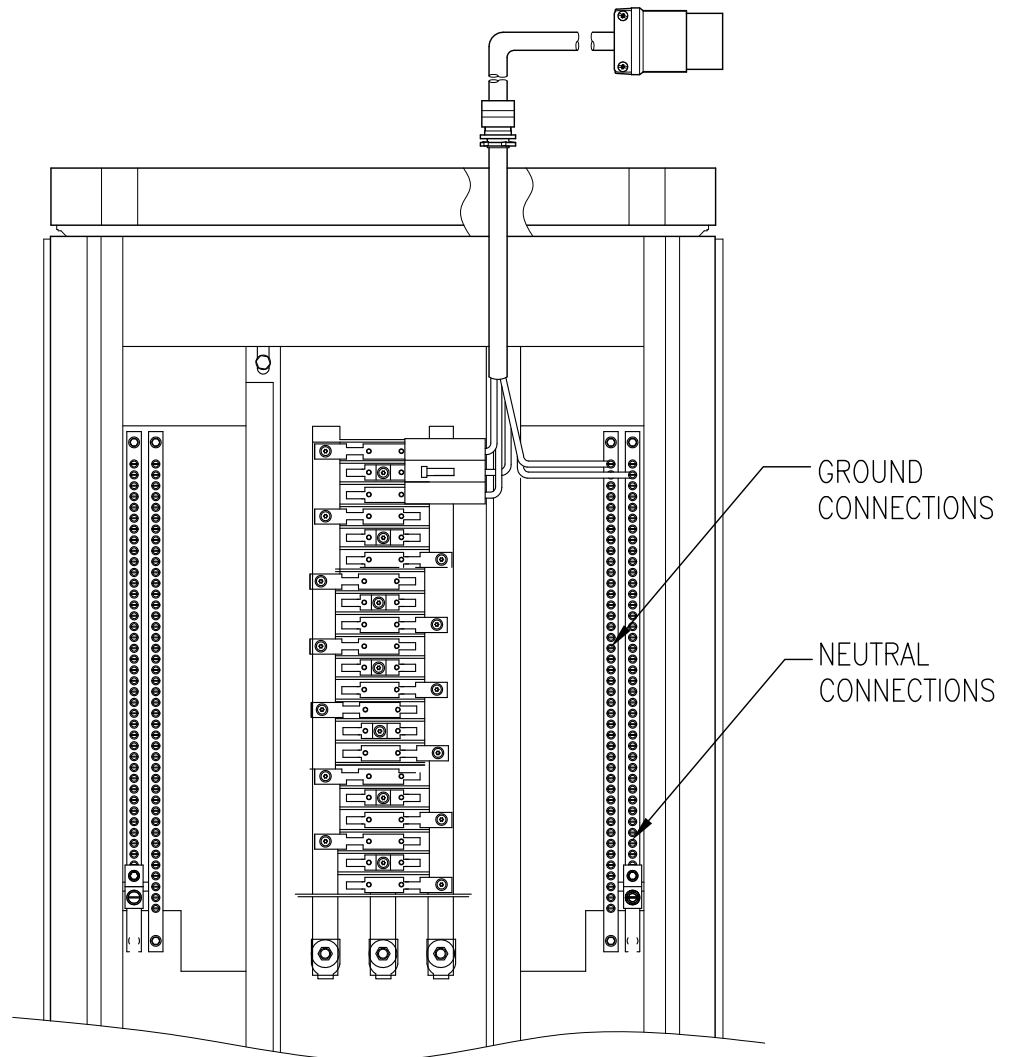




MIMIC DIAGRAM



INTERNAL MIMIC DIAGRAM



TYPICAL BREAKER CONNECTION  
(ENLARGED VIEW)

**NOTES:**

1. INSTALLATION SHALL COMPLY WITH ALL APPLICABLE NATIONAL, STATE AND LOCAL CODES.
2. PLEASE REFER TO PRODUCT MANUALS FOR ADDITIONAL DETAILS PRIOR TO INSTALLATION AND SITE PREPARATION WORK.

THIS DRAWING AND SPECIFICATIONS HEREIN ARE THE PROPERTY OF SCHNEIDER ELECTRIC AND SHALL NOT BE COPIED, REPRODUCED OR USED IN WHOLE OR IN PART, AS THE BASIS FOR THE MANUFACTURE OR SALE OF ITEMS WITHOUT WRITTEN PERMISSION FROM SCHNEIDER ELECTRIC. THIS DRAWING IS BASED UPON LATEST AVAILABLE INFORMATION AND IS SUBJECT TO CHANGE WITHOUT NOTICE.



TITLE: CONFIGURABLE POWER DISTRIBUTION  
 InfraStruxure PDU 60kW  
 Input: 480V, 3PH, 60Hz  
 Output: 208V, 3PH, 60Hz  
 MIMIC DIAGRAM & TYPICAL BREAKER CONNECTION

DWG NO:	PD60G6FK1	REV.	1
DRAWN BY:	JAYAPRAKASH	18-MAY-20	THIRD
ENGINEER:	EMANUEL MARTINEZ	18-MAY-20	ANGLE
APPROVED BY:	VICTOR ESPINOSA	18-MAY-20	PROJECTION

PROJECT: DRAWINGS SHEET 9 OF 13

WIRE HARNESS FROM THE PDU INTELLIGENCE MODULE

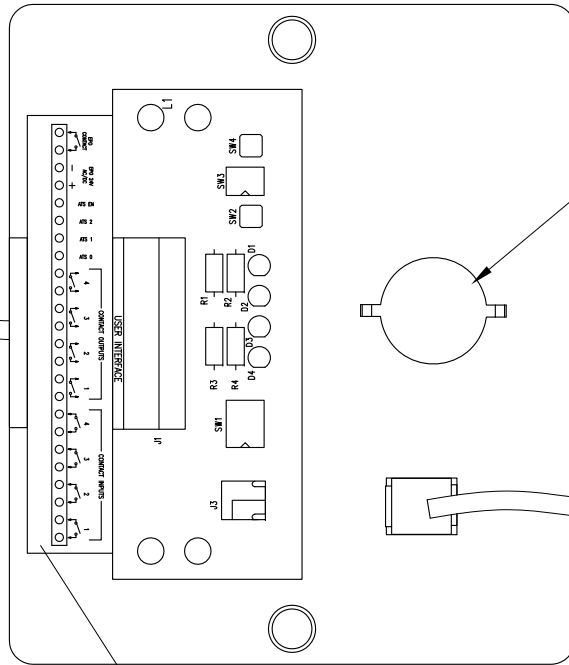
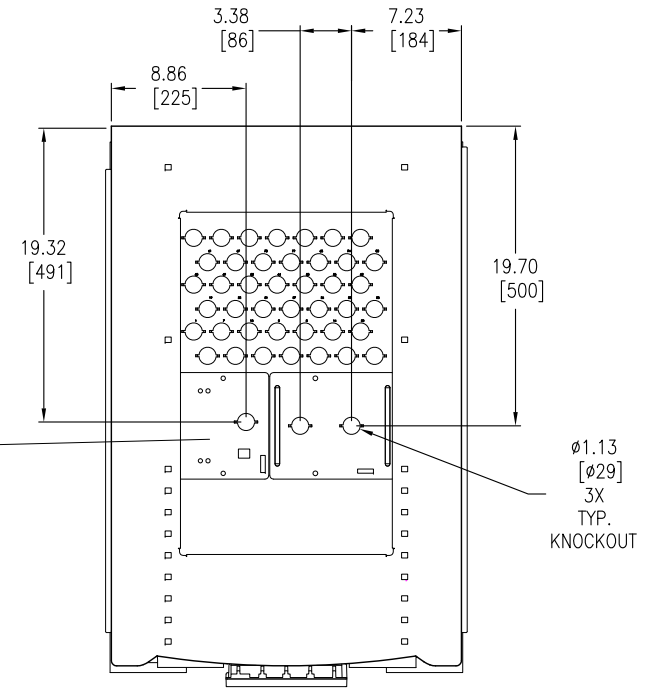


PLATE USER INTERFACE PCBMTG.  
BOTTOM VIEW

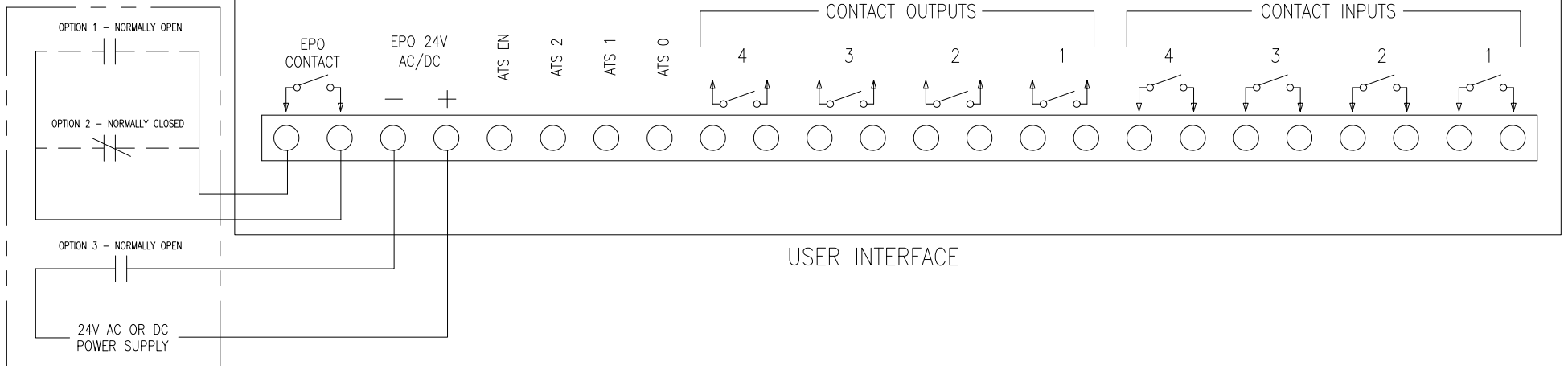
USER EPO CABLE ACCESS

ETHERNET CABLE FROM PDU INTELLIGENCE MODULE



FRONT  
PDU, TOP VIEW  
(COVER, DOORS AND CABLE RUN REMOVED)

EPO - EXTERNAL SET OF DRY CONTACTS OR AC/DC POWER SUPPLY



USER INTERFACE

NOTES:

- INSTALLATION SHALL COMPLY WITH ALL APPLICABLE NATIONAL, STATE AND LOCAL CODES.
- PLEASE REFER TO PRODUCT MANUALS FOR ADDITIONAL DETAILS PRIOR TO INSTALLATION AND SITE PREPARATION WORK.

THIS DRAWING AND SPECIFICATIONS HEREIN ARE THE PROPERTY OF SCHNEIDER ELECTRIC AND SHALL NOT BE COPIED, REPRODUCED OR USED IN WHOLE OR IN PART, AS THE BASIS FOR THE MANUFACTURE OR SALE OF ITEMS WITHOUT WRITTEN PERMISSION FROM SCHNEIDER ELECTRIC. THIS DRAWING IS BASED UPON LATEST AVAILABLE INFORMATION AND IS SUBJECT TO CHANGE WITHOUT NOTICE.



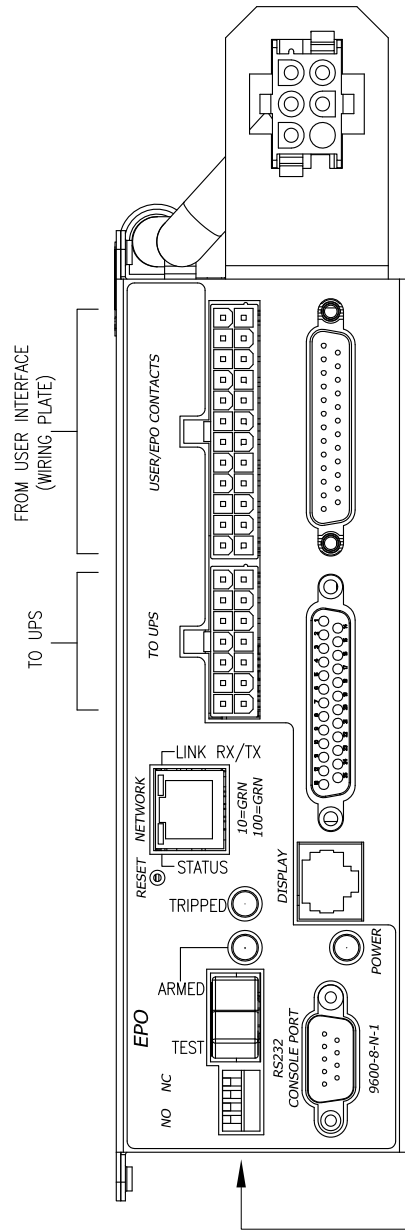
TITLE: CONFIGURABLE POWER DISTRIBUTION  
InfraStruxure PDU 60kW  
Input: 480V, 3PH, 60Hz  
Output: 208V, 3PH, 60Hz  
EPO INTERFACE

PROJECT: DRAWINGS SHEET 10 OF 13

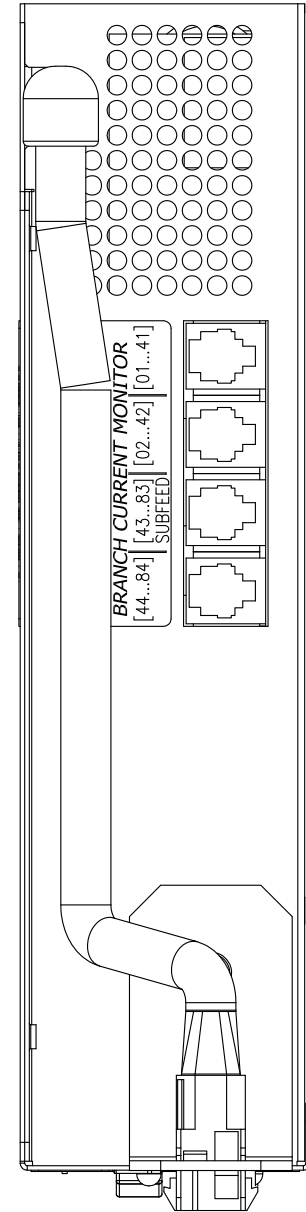
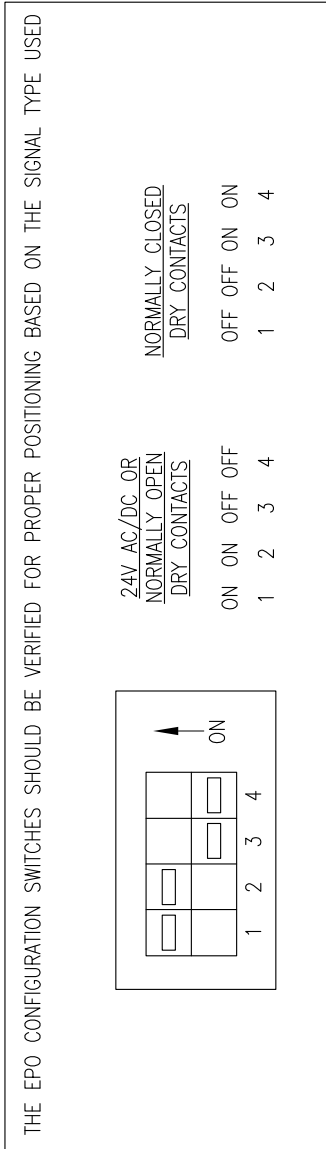
DWG NO: PD60G6FK1 REV. 1

DRAWN BY:	JAYAPRAKASH	18-MAY-20	THIRD
ENGINEER:	EMANUEL MARTINEZ	18-MAY-20	ANGLE
APPROVED BY:	VICTOR ESPINOSA	18-MAY-20	PROJECTION

# PDU INTELLIGENCE MODULE



FRONT VIEW



TOP VIEW

CONNECTORS ARE PREWIRED IF PDU IS PURCHASED WITH BRANCH CURRENT MONITORING SYSTEM

**NOTES:**

1. INSTALLATION SHALL COMPLY WITH ALL APPLICABLE NATIONAL, STATE AND LOCAL CODES.
2. PLEASE REFER TO PRODUCT MANUALS FOR ADDITIONAL DETAILS PRIOR TO INSTALLATION AND SITE PREPARATION WORK.

THIS DRAWING AND SPECIFICATIONS HEREIN ARE THE PROPERTY OF SCHNEIDER ELECTRIC AND SHALL NOT BE COPIED, REPRODUCED OR USED IN WHOLE OR IN PART, AS THE BASIS FOR THE MANUFACTURE OR SALE OF ITEMS WITHOUT WRITTEN PERMISSION FROM SCHNEIDER ELECTRIC. THIS DRAWING IS BASED UPON LATEST AVAILABLE INFORMATION AND IS SUBJECT TO CHANGE WITHOUT NOTICE.

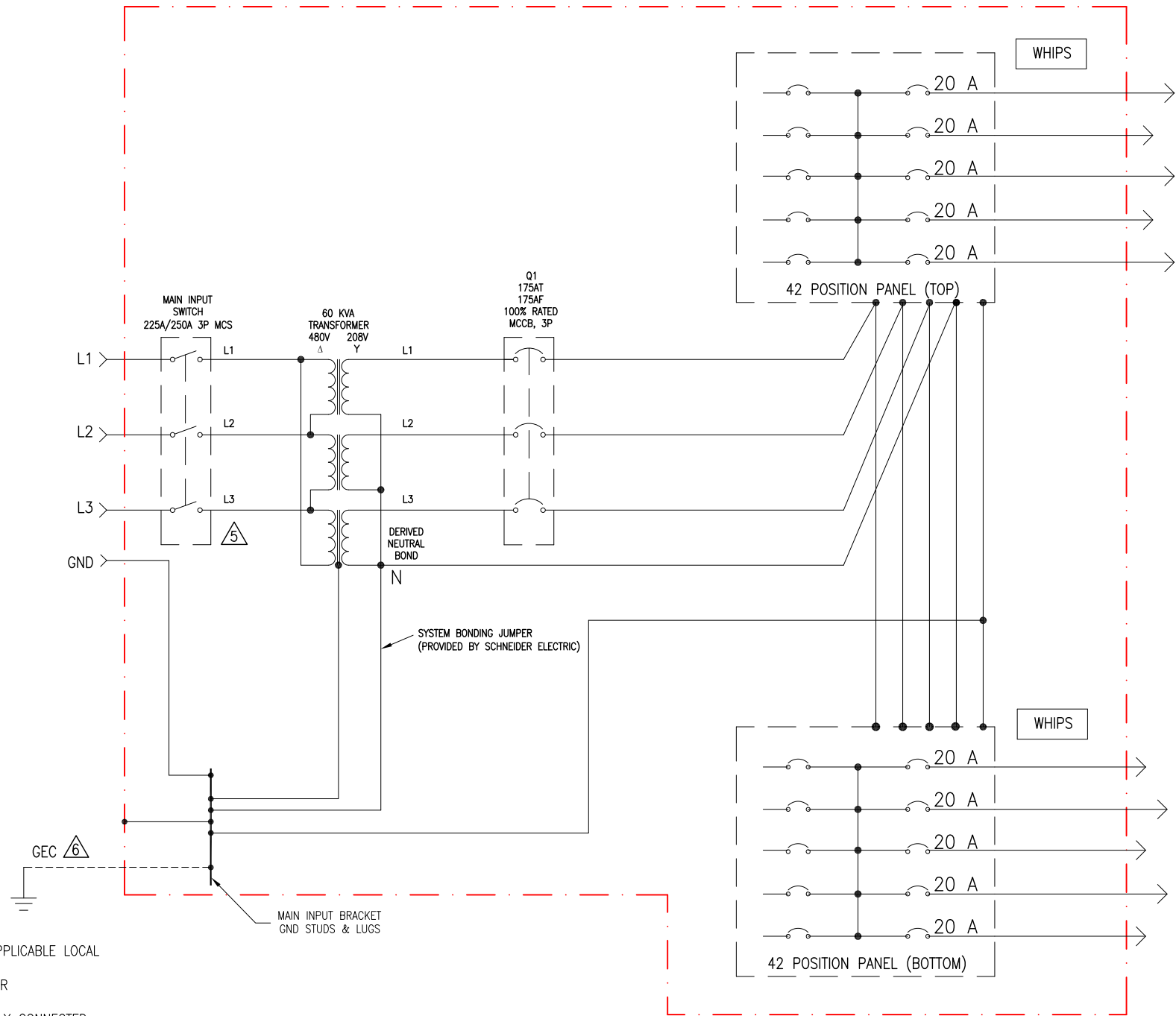


TITLE: CONFIGURABLE POWER DISTRIBUTION  
 InfraStruxure PDU 60kW  
 Input: 480V, 3PH, 60Hz  
 Output: 208V, 3PH, 60Hz  
 INTELLIGENCE MODULE

PROJECT: DRAWINGS SHEET 110 OF 13

DWG NO: PD60G6FK1 REV. 1

DRAWN BY:	JAYAPRAKASH	18-MAY-20	THIRD
ENGINEER:	EMANUEL MARTINEZ	18-MAY-20	ANGLE
APPROVED BY:	VICTOR ESPINOSA	18-MAY-20	PROJECTION



**NOTES:**

1. INSTALLATION SHALL COMPLY WITH ALL APPLICABLE LOCAL AND NATIONAL CODES.
2. PLEASE REFER TO PRODUCT MANUALS FOR ADDITIONAL DETAILS.
3. RACK FRAME AND SKINS ARE ELECTRICALLY CONNECTED AND TIED TO CHASSIS GROUND.
4. TRANSFORMER BASE IS GROUNDED THROUGH FRAME.
- △ 5. SHUNT TRIP ON EPO SIGNAL
- △ 6. THIS SYSTEM SHALL BE INSTALLED AS A SEPARATELY DERIVED SYSTEM IN ACCORDANCE WITH LOCAL AND NATIONAL CODES THE GROUNDING ELECTRODE CONDUCTOR (GEC) IS PROVIDED BY OTHERS.

THIS DRAWING AND SPECIFICATIONS HEREIN ARE THE PROPERTY OF SCHNEIDER ELECTRIC AND SHALL NOT BE COPIED, REPRODUCED OR USED IN WHOLE OR IN PART, AS THE BASIS FOR THE MANUFACTURE OR SALE OF ITEMS WITHOUT WRITTEN PERMISSION FROM SCHNEIDER ELECTRIC. THIS DRAWING IS BASED UPON LATEST AVAILABLE INFORMATION AND IS SUBJECT TO CHANGE WITHOUT NOTICE.



TITLE: CONFIGURABLE POWER DISTRIBUTION  
 InfraStruxure PDU 60kW  
 Input: 480V, 3PH, 60Hz  
 Output: 208V, 3PH, 60Hz  
 FIVE LINE DIAGRAM

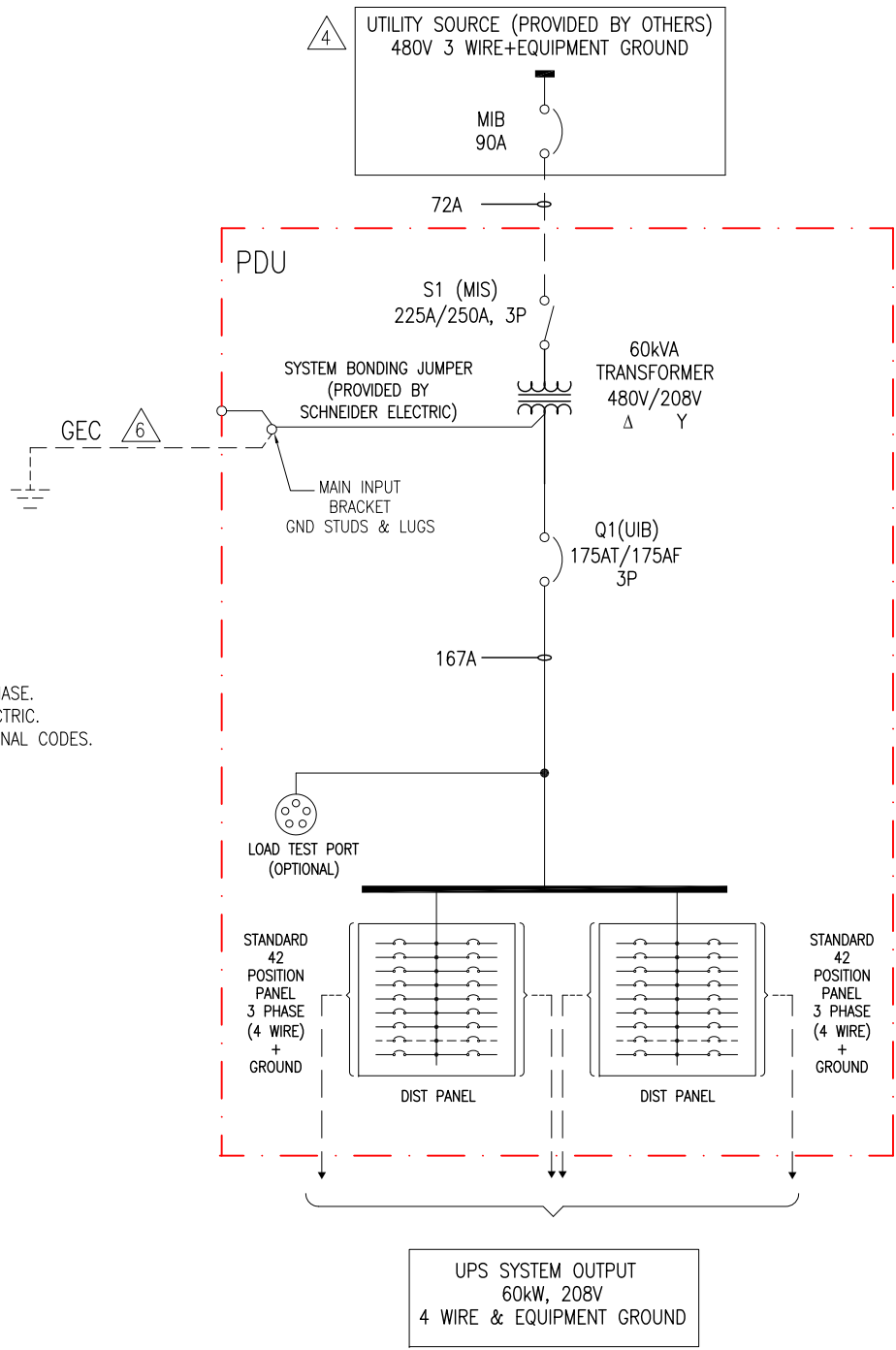
PROJECT: DRAWINGS SHEET 12 OF 13

DWG NO:	PD60G6FK1	REV.	1
DRAWN BY:	JAYAPRAKASH	18-MAY-20	ANGLE
ENGINEER:	EMANUEL MARTINEZ	18-MAY-20	PROJECTION
APPROVED BY:	VICTOR ESPINOSA	18-MAY-20	N.A

**LEGEND:**

----- AC CABLE - PROVIDED BY OTHERS.

———— AC BUS



**NOTES:**

1. INSTALLATION SHALL COMPLY WITH ALL APPLICABLE LOCAL AND NATIONAL CODES.
2. PLEASE REFER TO PRODUCT MANUALS FOR ADDITIONAL DETAILS.
3. DRAWING DEPICTS POWER SYSTEM CONNECTIONS AND IS NOT REPRESENTATIVE OF PHYSICAL LAYOUT, PLEASE REFER TO MECHANICAL DRAWINGS FOR PHYSICAL LAYOUT.
- △ 4. AC SOURCE TO BE 480VAC 3PH 3 WIRE + EQUIPMENT GROUND (PROVIDED BY OTHERS).
5. INPUT OVERCURRENT PROTECTION AND WIRING MUST BE INSTALLED FOR A FULLY RATED 60kW SYMMETRA 3 PHASE. INPUT OVERCURRENT PROTECTION IS BASED ON 80% RATING. ANY DEVIATION PLEASE CONTACT SCHNEIDER ELECTRIC.
- △ 6. THIS SYSTEM SHALL BE INSTALLED AS A SEPARATELY DERIVED SYSTEM IN ACCORDANCE WITH LOCAL AND NATIONAL CODES. THE GROUNDING ELECTRODE CONDUCTOR (GEC) IS PROVIDED BY OTHERS.

THIS DRAWING AND SPECIFICATIONS HEREIN ARE THE PROPERTY OF SCHNEIDER ELECTRIC AND SHALL NOT BE COPIED, REPRODUCED OR USED IN WHOLE OR IN PART, AS THE BASIS FOR THE MANUFACTURE OR SALE OF ITEMS WITHOUT WRITTEN PERMISSION FROM SCHNEIDER ELECTRIC. THIS DRAWING IS BASED UPON LATEST AVAILABLE INFORMATION AND IS SUBJECT TO CHANGE WITHOUT NOTICE.



**TITLE:** CONFIGURABLE POWER DISTRIBUTION  
 InfraStruxure PDU 60kW  
 Input: 480V, 3PH, 60Hz  
 Output: 208V, 3PH, 60Hz  
**PROJECT:** DRAWINGS **SHEET** 13 OF 13

**DWG NO:** PD60G6FK1  
**DRAWN BY:** JAYAPRAKASH/S CUNHA  
**ENGINEER:** EMANUEL MARTINEZ  
**APPROVED BY:** VICTOR ESPINOSA

**REV.** 2  
 18-MAY-20  
 18-MAY-20  
 18-MAY-20  
 PROJ ANGLE N/A