

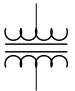


CONFIGURABLE POWER DISTRIBUTION, InfraStruxure PDU 40kW 480V/208V with MBP

Sheet No.	Component /Detail	Description
1	Draw ing Guide	InfraStruxure PDU 40kW 480V/208V w ith MBP
2	Specification	InfraStruxure PDU 40kW 480V/208V w ith MBP
3-6	Mechanical Layouts	InfraStruxure PDU 40kW 480V/208V w ith MBP
7-11	Internal View s & Details	InfraStruxure PDU 40kW 480V/208V w ith MBP
12-13	System One Line /Five line Diagram	InfraStruxure PDU 40kW 480V/208V w ith MBP

LEGEND	
SYMBOL	DESCRIPTION
	CIRCUIT BREAKER
	SWITCH
	TRANSFORMER

THIS DRAWING AND SPECIFICATIONS HEREIN ARE THE PROPERTY OF SCHNEIDER ELECTRIC AND SHALL NOT BE COPIED, REPRODUCED OR USED IN WHOLE OR IN PART, AS THE BASIS FOR THE MANUFACTURE OR SALE OF ITEMS WITHOUT WRITTEN PERMISSION FROM SCHNEIDER ELECTRIC. THIS DRAWING IS BASED UPON LATEST AVAILABLE INFORMATION AND IS SUBJECT TO CHANGE WITHOUT NOTICE.



TITLE: CONFIGURABLE POWER DISTRIBUTION
 InfraStruxure PDU 40kW with MBP
 Input: 480V, 3PH, 60Hz
 Output: 208V, 3PH, 60Hz
 DRAWING GUIDE

PROJECT: DRAWINGS SHEET 1 OF 13

DWG NO: PD40G6FK1-M REV. 0

DRAWN BY:	JAYAPRAKASH	24-FEB-12	ANGLE
ENGINEER:	J.RING/F.DIOSA	18-MAR-12	PROJECTION
APPROVED BY:	R.HANSEN/E.SILVA	18-MAR-12	N/A

CONFIGURABLE POWER DISTRIBUTION - SPECIFICATIONS

1. AC Input

- 1.1 Nominal voltage : 480V 3PH WYE, 3W+G+GEC (provided by others)
- 1.2 Frequency : 60Hz
- 1.3 Input Circuit Breaker : 80A
- 1.4 Nominal current : 54A
- 1.5 Main Input conductor minimum size : #4 AWG (final conductor size shall be determined per local or national codes)

2. AC Output

- 2.1 Nominal voltage : 208V 3PH 4W+G
- 2.2 Nominal current : 111A
- 2.3 Full Load rating : 40kW
- 2.4 Distribution Panel : 2 x 225A, 42-position
- 2.5 Distribution Breaker Size : 150A (Max)

3. ENVIRONMENTS

- 3.1 The assembly is made for an ambient temperature for operation of : 0°C to 40°C.
- 3.2 The assembly is made for an ambient temperature for storage of : 0°C to 45°C.

4. ENCLOSURE

- 4.1 The assembly material is steel with surface coating.
- 4.2 The assembly is made for Indoor floor Installation.

5. CONNECTIONS

- 5.1 Incoming and outgoing cables to be connected to terminals in component section.
- 5.2 Input cable entry is through side, top or bottom of the unit.

NOTES:

1. INSTALLATION SHALL COMPLY WITH ALL APPLICABLE NATIONAL, STATE AND LOCAL CODES.
2. PLEASE REFER TO PRODUCT MANUALS FOR ADDITIONAL DETAILS PRIOR TO INSTALLATION AND SITE PREPARATION WORK.

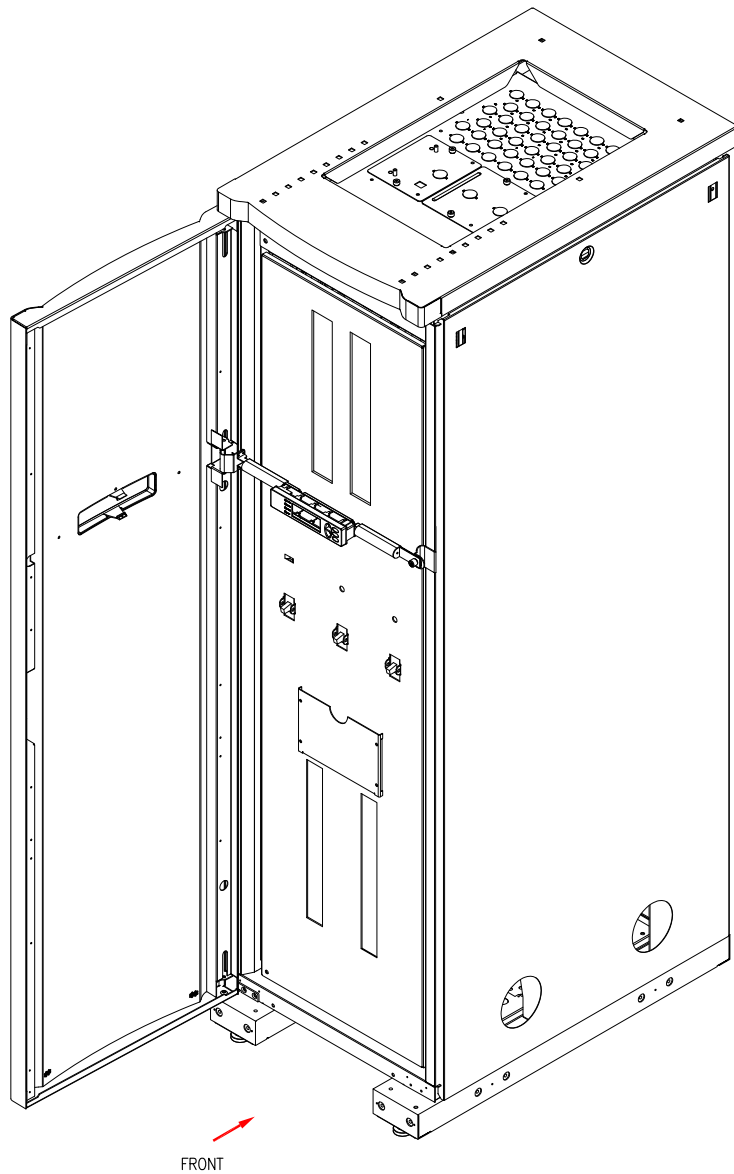
THIS DRAWING AND SPECIFICATIONS HEREIN ARE THE PROPERTY OF SCHNEIDER ELECTRIC AND SHALL NOT BE COPIED, REPRODUCED OR USED IN WHOLE OR IN PART, AS THE BASIS FOR THE MANUFACTURE OR SALE OF ITEMS WITHOUT WRITTEN PERMISSION FROM SCHNEIDER ELECTRIC. THIS DRAWING IS BASED UPON LATEST AVAILABLE INFORMATION AND IS SUBJECT TO CHANGE WITHOUT NOTICE.



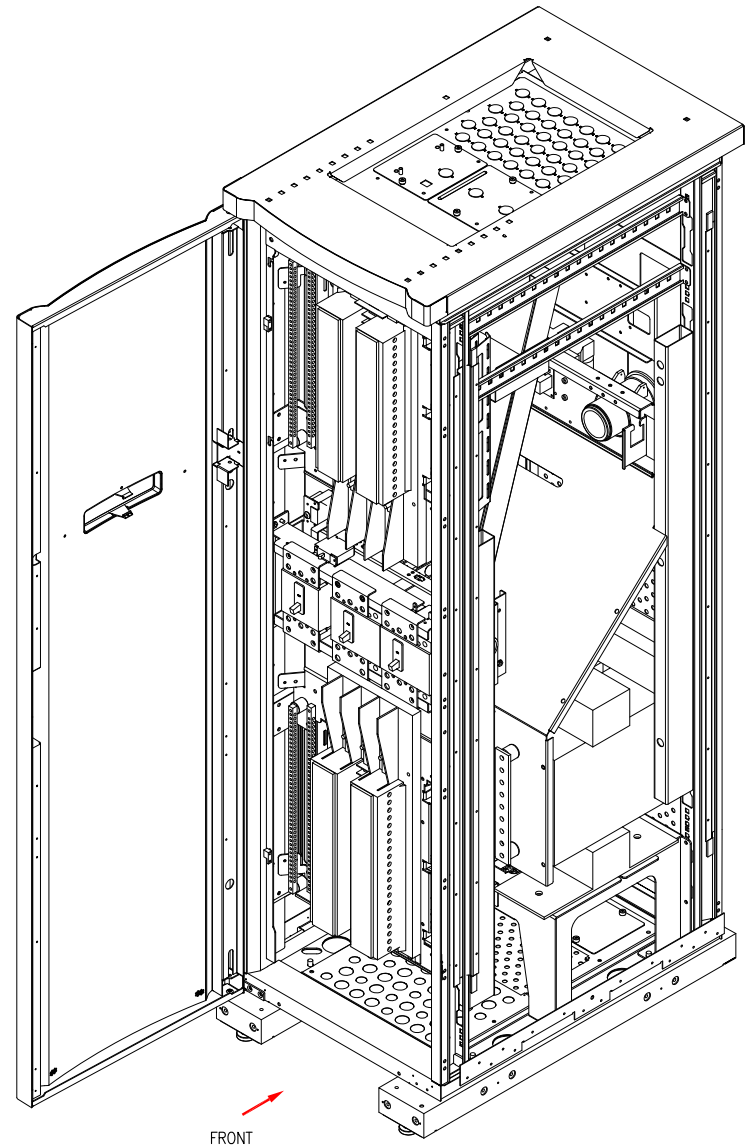
TITLE: CONFIGURABLE POWER DISTRIBUTION
InfraStruxure PDU 40kW with MBP
Input: 480V, 3PH, 60Hz
Output: 208V, 3PH, 60Hz
SPECIFICATIONS

PROJECT: DRAWINGS SHEET 2 OF 13

DWG NO:	PD40G6FK1-M	REV.	2
DRAWN BY:	JAYAPRAKASH	10-MAR-20	ANGLE
ENGINEER:	VICTOR ESPINOSA	10-MAR-20	PROJECTION
APPROVED BY:	VICTOR ESPINOSA	10-MAR-20	N/A



ISOMETRIC VIEW



ISOMETRIC VIEW
(INSIDE PANELS REMOVED)

NOTES:

1. INSTALLATION SHALL COMPLY WITH ALL APPLICABLE NATIONAL, STATE AND LOCAL CODES.
2. PLEASE REFER TO PRODUCT MANUALS FOR ADDITIONAL DETAILS PRIOR TO INSTALLATION AND SITE PREPARATION WORK.
3. CABLE ENTRY IS FROM TOP OR BOTTOM OF THE UNIT.
4. FRONT AND REAR SERVICE ACCESS IS REQUIRED.

THIS DRAWING AND SPECIFICATIONS HEREIN ARE THE PROPERTY OF SCHNEIDER ELECTRIC AND SHALL NOT BE COPIED, REPRODUCED OR USED IN WHOLE OR IN PART, AS THE BASIS FOR THE MANUFACTURE OR SALE OF ITEMS WITHOUT WRITTEN PERMISSION FROM SCHNEIDER ELECTRIC. THIS DRAWING IS BASED UPON LATEST AVAILABLE INFORMATION AND IS SUBJECT TO CHANGE WITHOUT NOTICE.



TITLE: CONFIGURABLE POWER DISTRIBUTION
 InfraStruxure PDU 40kW with MBP
 Input: 480V, 3PH, 60Hz
 Output: 208V, 3PH, 60Hz
 ISOMETRIC VIEW

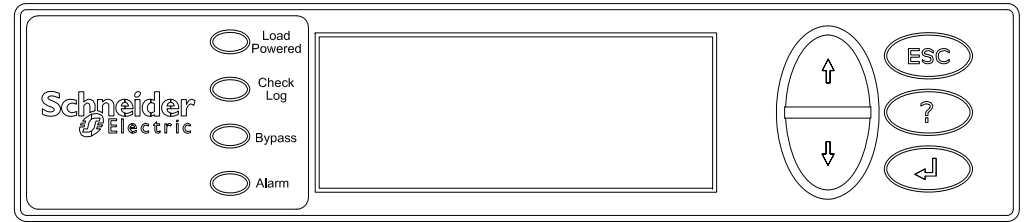
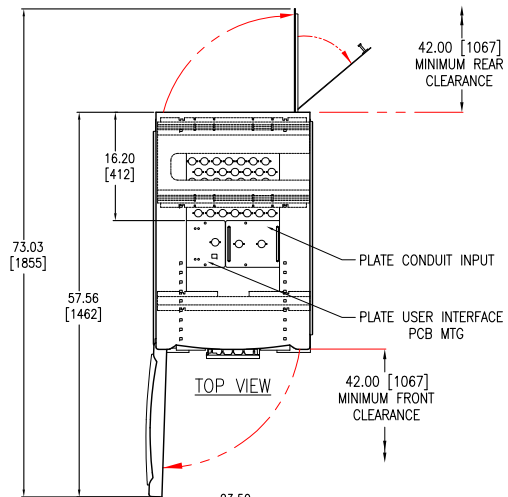
DWG NO: PD40G6FK1-M **REV.** 0

DRAWN BY: JAYAPRAKASH 24-FEB-12 **THIRD**

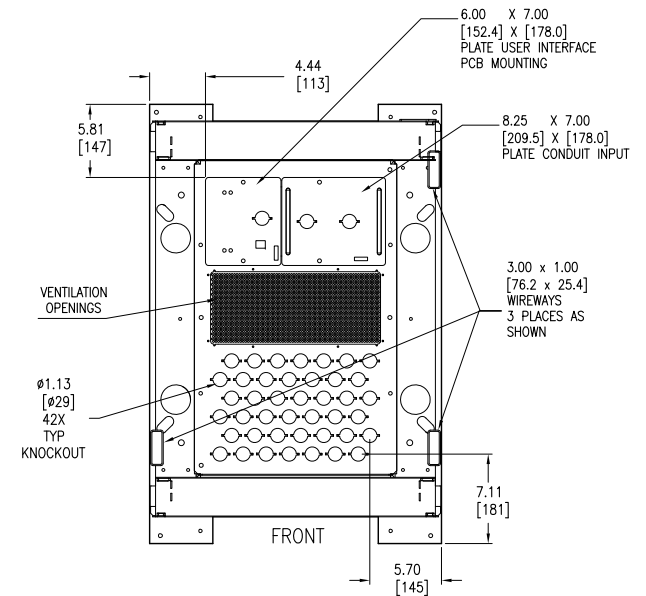
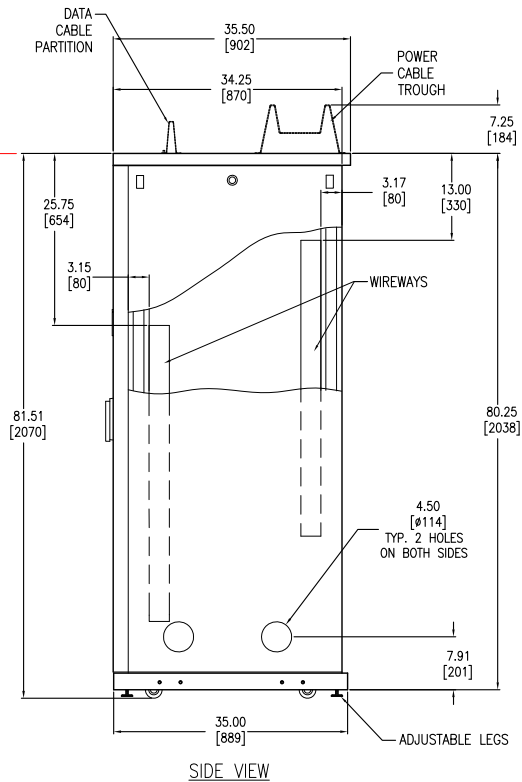
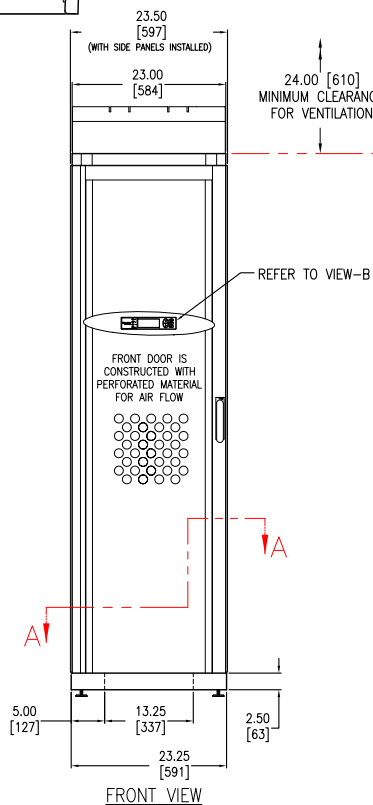
ENGINEER: J.RING/F.DIOSA 18-MAR-12 **ANGLE**

PROJECT: DRAWINGS **SHEET** 3 OF 13

APPROVED BY: R.HANSEN/E.SILVA 18-MAR-12 **PROJECTION**



**DETAIL-B (ENLARGED)
CONTROL PANEL**



NOTES:

1. INSTALLATION SHALL COMPLY WITH ALL APPLICABLE NATIONAL, STATE AND LOCAL CODES.
2. PLEASE REFER TO PRODUCT MANUALS FOR ADDITIONAL DETAILS PRIOR TO INSTALLATION AND SITE PREPARATION WORK.
3. ALL DIMENSIONS ARE IN INCHES [MILLIMETERS], UNLESS THERWISE SPECIFIED.
4. CABLE ENTRY IS FROM SIDE, TOP OR BOTTOM OF THE UNIT.
5. FRONT AND REAR ACCESS ARE REQUIRED FOR SERVICE.
6. WEIGHT OF THE UNIT IS 1276 LBS [580kg].
7. FLOOR LOADING: 220LBS/ft² [1074kg/meter²].
8. OPERATING TEMPERATURE: 32-104°F [0-40°C].
9. DATA CABLE PARTITION AND POWER CABLE TROUGH ARE NOT PART OF THE SKU.
10. COLOR: BLACK.

THIS DRAWING AND SPECIFICATIONS HEREIN ARE THE PROPERTY OF SCHNEIDER ELECTRIC AND SHALL NOT BE COPIED, REPRODUCED OR USED IN WHOLE OR IN PART, AS THE BASIS FOR THE MANUFACTURE OR SALE OF ITEMS WITHOUT WRITTEN PERMISSION FROM SCHNEIDER ELECTRIC. THIS DRAWING IS BASED UPON LATEST AVAILABLE INFORMATION AND IS SUBJECT TO CHANGE WITHOUT NOTICE.



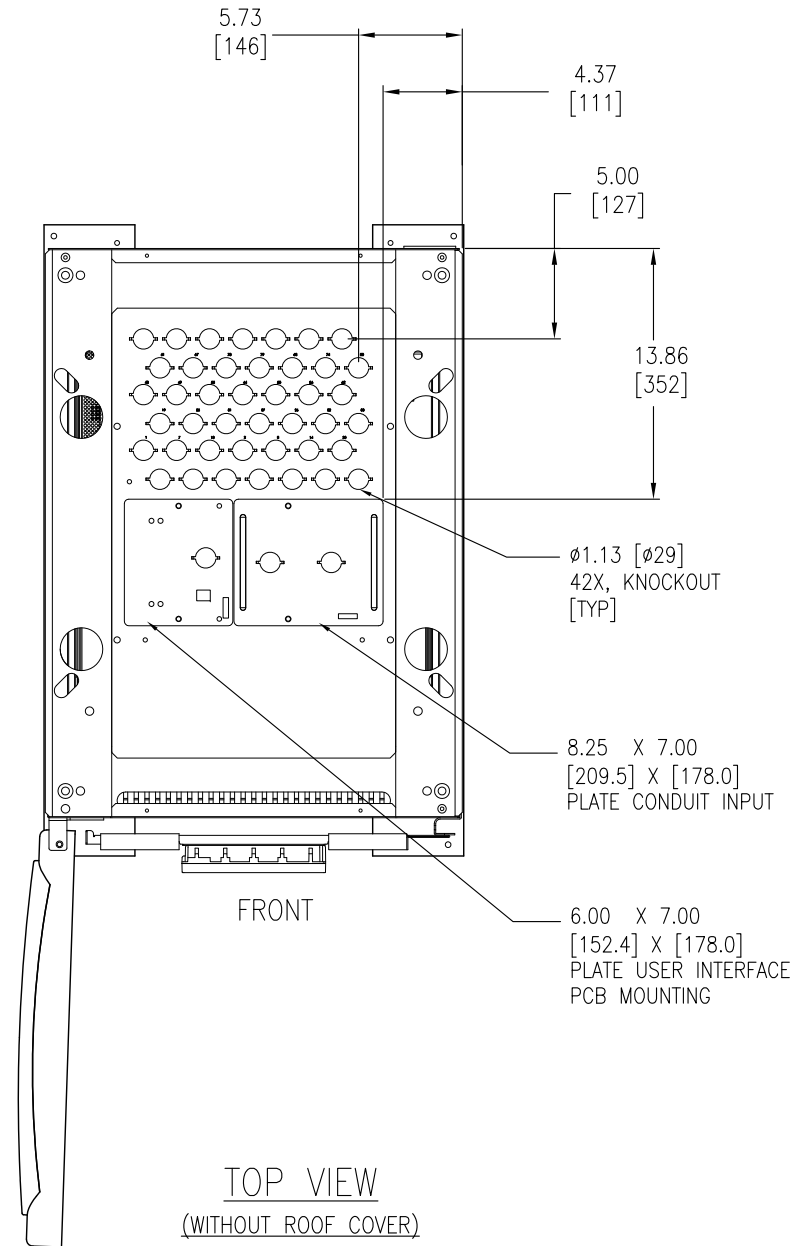
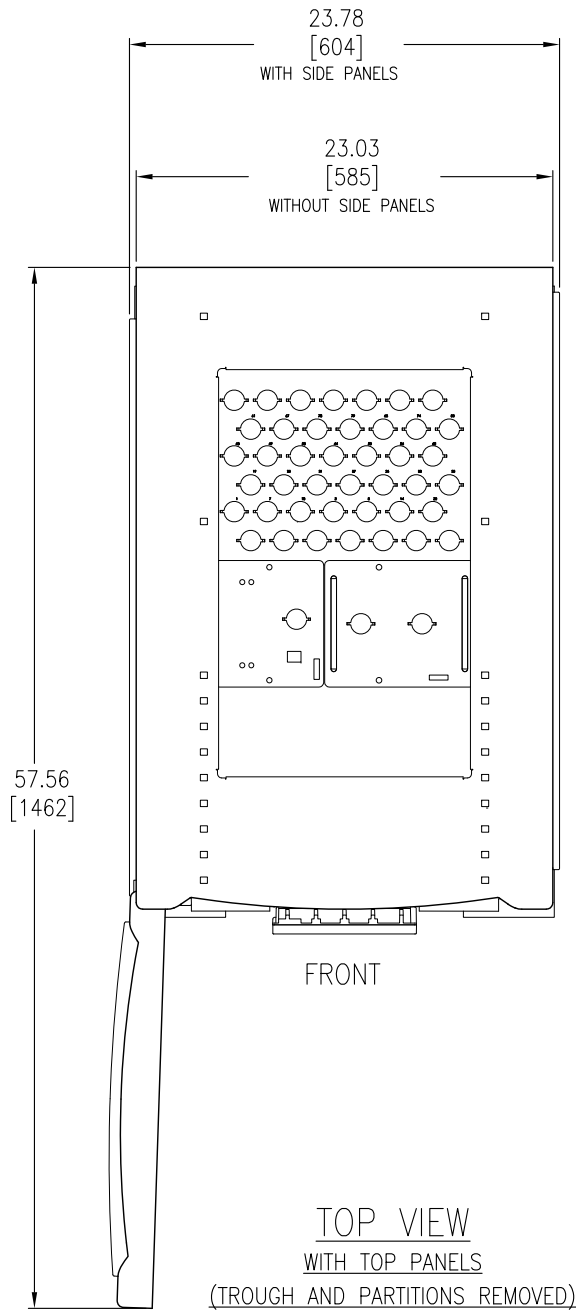
TITLE: CONFIGURABLE POWER DISTRIBUTION
InfraStruxure PDU 40kW with MBP
Input: 480V, 3PH, 60Hz
Output: 208V, 3PH, 60Hz
GENERAL ARRANGEMENT

DWG NO: PD40G6FK1-M **REV.** 1

DRAWN BY: JAYAPRAKASH 18-MAY-20 **THIRD**

ENGINEER: J.RING/F.DIOSA 18-MAY-20 **ANGLE**

PROJECT: DRAWINGS **SHEET** 4 OF 13 **APPROVED BY:** R.HANSEN/E.SILVA 18-MAY-20 **PROJECTION**



NOTES:

1. INSTALLATION SHALL COMPLY WITH ALL APPLICABLE NATIONAL, STATE AND LOCAL CODES.
2. PLEASE REFER TO PRODUCT MANUALS FOR ADDITIONAL DETAILS PRIOR TO INSTALLATION AND SITE PREPARATION WORK.
3. ALL DIMENSIONS ARE IN INCHES [MILLIMETERS], UNLESS OTHERWISE SPECIFIED.

THIS DRAWING AND SPECIFICATIONS HEREIN ARE THE PROPERTY OF SCHNEIDER ELECTRIC AND SHALL NOT BE COPIED, REPRODUCED OR USED IN WHOLE OR IN PART, AS THE BASIS FOR THE MANUFACTURE OR SALE OF ITEMS WITHOUT WRITTEN PERMISSION FROM SCHNEIDER ELECTRIC. THIS DRAWING IS BASED UPON LATEST AVAILABLE INFORMATION AND IS SUBJECT TO CHANGE WITHOUT NOTICE.

Schneider Electric

TITLE: CONFIGURABLE POWER DISTRIBUTION
InfraStruxure PDU 40kW with MBP
Input: 480V, 3PH, 60Hz
Output: 208V, 3PH, 60Hz
TOP VIEWS

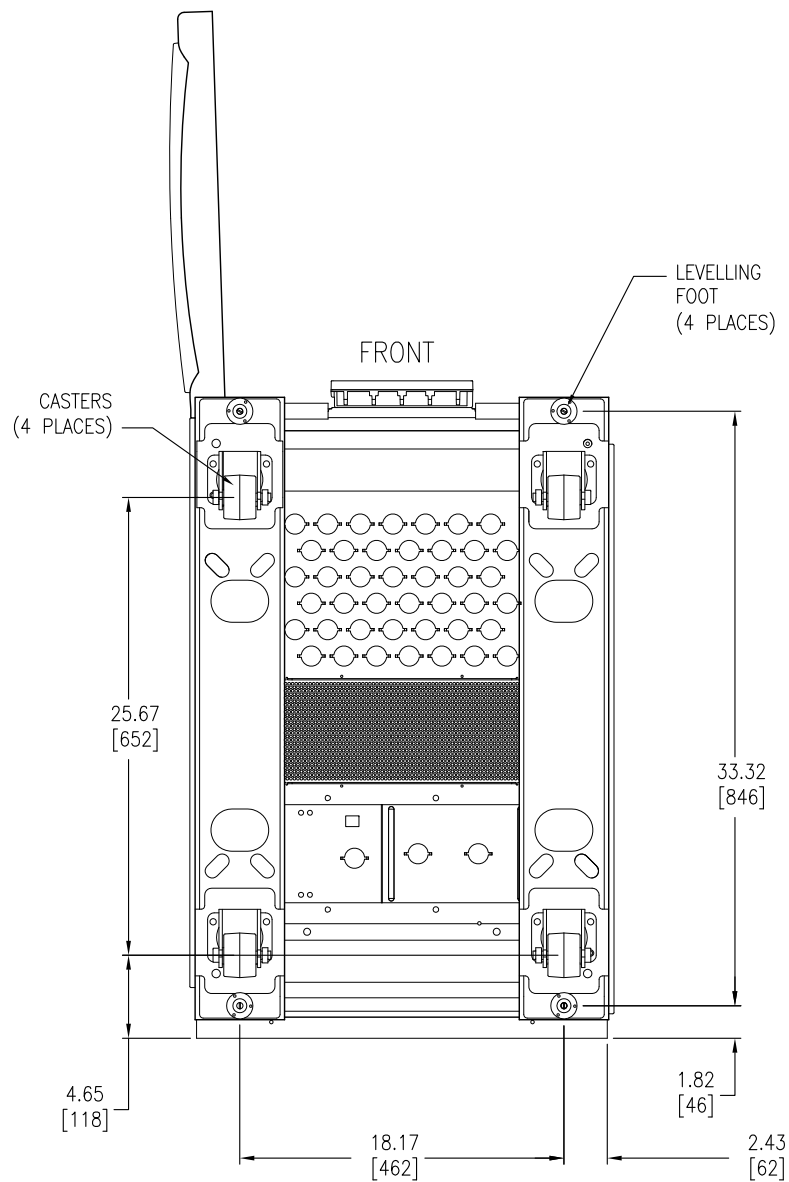
PROJECT: DRAWINGS SHEET 5 OF 13

DWG NO: PD40G6FK1-M **REV.** 0

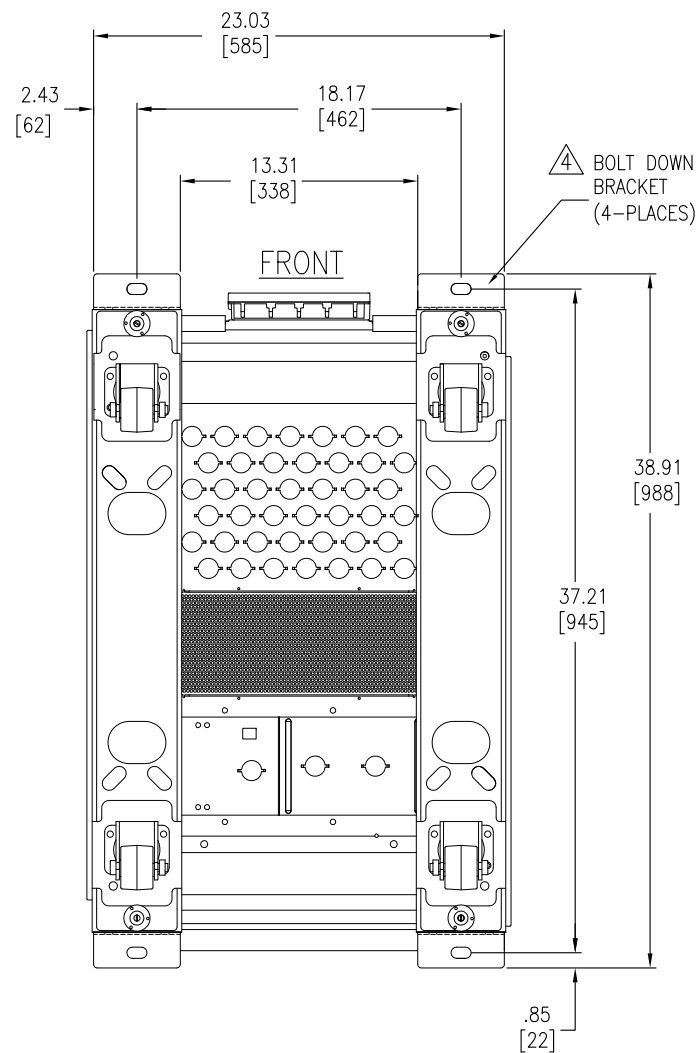
DRAWN BY: JAYAPRAKASH 24-FEB-12 **THIRD**

ENGINEER: J.RING/F.DIOSA 18-MAR-12 **ANGLE**

APPROVED BY: R.HANSEN/E.SILVA 18-MAR-12 **PROJECTION**



BOTTOM VIEW



BOTTOM VIEW
FRONT & REAR DOOR NOT SHOWN
(ANCHORING DETAILS WITH
BOLT DOWN BRACKETS)

NOTES:

1. INSTALLATION SHALL COMPLY WITH ALL APPLICABLE NATIONAL, STATE AND LOCAL CODES.
2. PLEASE REFER TO PRODUCT MANUALS FOR ADDITIONAL DETAILS PRIOR TO INSTALLATION AND SITE PREPARATION WORK.
3. ALL DIMENSIONS ARE IN INCHES [MILLIMETERS], UNLESS OTHERWISE SPECIFIED.

△4. TO STABILIZE THE ENCLOSURE (IF IT IS NOT JOINED WITH ANOTHER COMPONENT) USE THE AR8112BLK BOLT-DOWN KIT. ATTACH THE BRACKETS TO THE UNIT AS SHOWN. USE CODE COMPLIANT FASTENERS TO SECURE THE UNIT TO THE FLOOR.

THIS DRAWING AND SPECIFICATIONS HEREIN ARE THE PROPERTY OF SCHNEIDER ELECTRIC AND SHALL NOT BE COPIED, REPRODUCED OR USED IN WHOLE OR IN PART, AS THE BASIS FOR THE MANUFACTURE OR SALE OF ITEMS WITHOUT WRITTEN PERMISSION FROM SCHNEIDER ELECTRIC. THIS DRAWING IS BASED UPON LATEST AVAILABLE INFORMATION AND IS SUBJECT TO CHANGE WITHOUT NOTICE.



TITLE: CONFIGURABLE POWER DISTRIBUTION
InfraStruxure PDU 40kW with MBP
Input: 480V, 3PH, 60Hz
Output: 208V, 3PH, 60Hz
BOTTOM VIEW & ANCHORING DETAILS

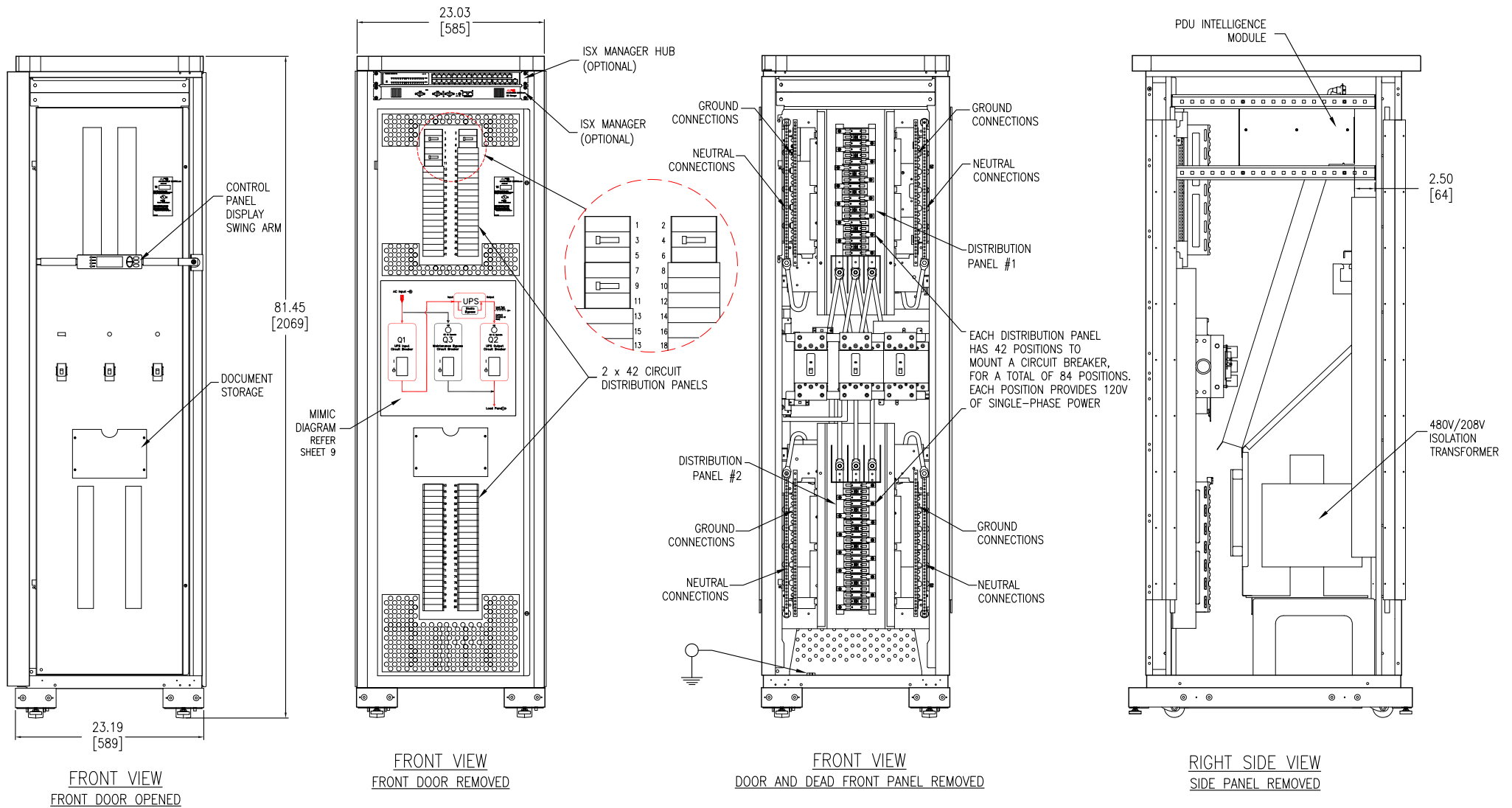
PROJECT: DRAWINGS **SHEET** 6 OF 13

DWG NO: PD40G6FK1-M **REV.** 0

DRAWN BY: JAYAPRAKASH 24-FEB-12 **THIRD**

ENGINEER: J.RING/F.DIOSA 18-MAR-12 **ANGLE**

APPROVED BY: R.HANSEN/E.SILVA 18-MAR-12 **PROJECTION**



- NOTES:**
1. INSTALLATION SHALL COMPLY WITH ALL APPLICABLE NATIONAL, STATE AND LOCAL CODES.
 2. PLEASE REFER TO PRODUCT MANUALS FOR ADDITIONAL DETAILS PRIOR TO INSTALLATION AND SITE PREPARATION WORK.
 3. ALL DIMENSIONS ARE IN INCHES [MILLIMETERS], UNLESS OTHERWISE SPECIFIED.
 4. SOME STRUCTURAL DETAILS HAVE BEEN OMITTED FOR THE PURPOSE OF CLARITY.

THIS DRAWING AND SPECIFICATIONS HEREIN ARE THE PROPERTY OF SCHNEIDER ELECTRIC AND SHALL NOT BE COPIED, REPRODUCED OR USED IN WHOLE OR IN PART, AS THE BASIS FOR THE MANUFACTURE OR SALE OF ITEMS WITHOUT WRITTEN PERMISSION FROM SCHNEIDER ELECTRIC. THIS DRAWING IS BASED UPON LATEST AVAILABLE INFORMATION AND IS SUBJECT TO CHANGE WITHOUT NOTICE.



TITLE: CONFIGURABLE POWER DISTRIBUTION
 InfraStruxure PDU 40kW with MBP
 Input: 480V, 3PH, 60Hz
 Output: 208V, 3PH, 60Hz
 INTERNAL VIEW

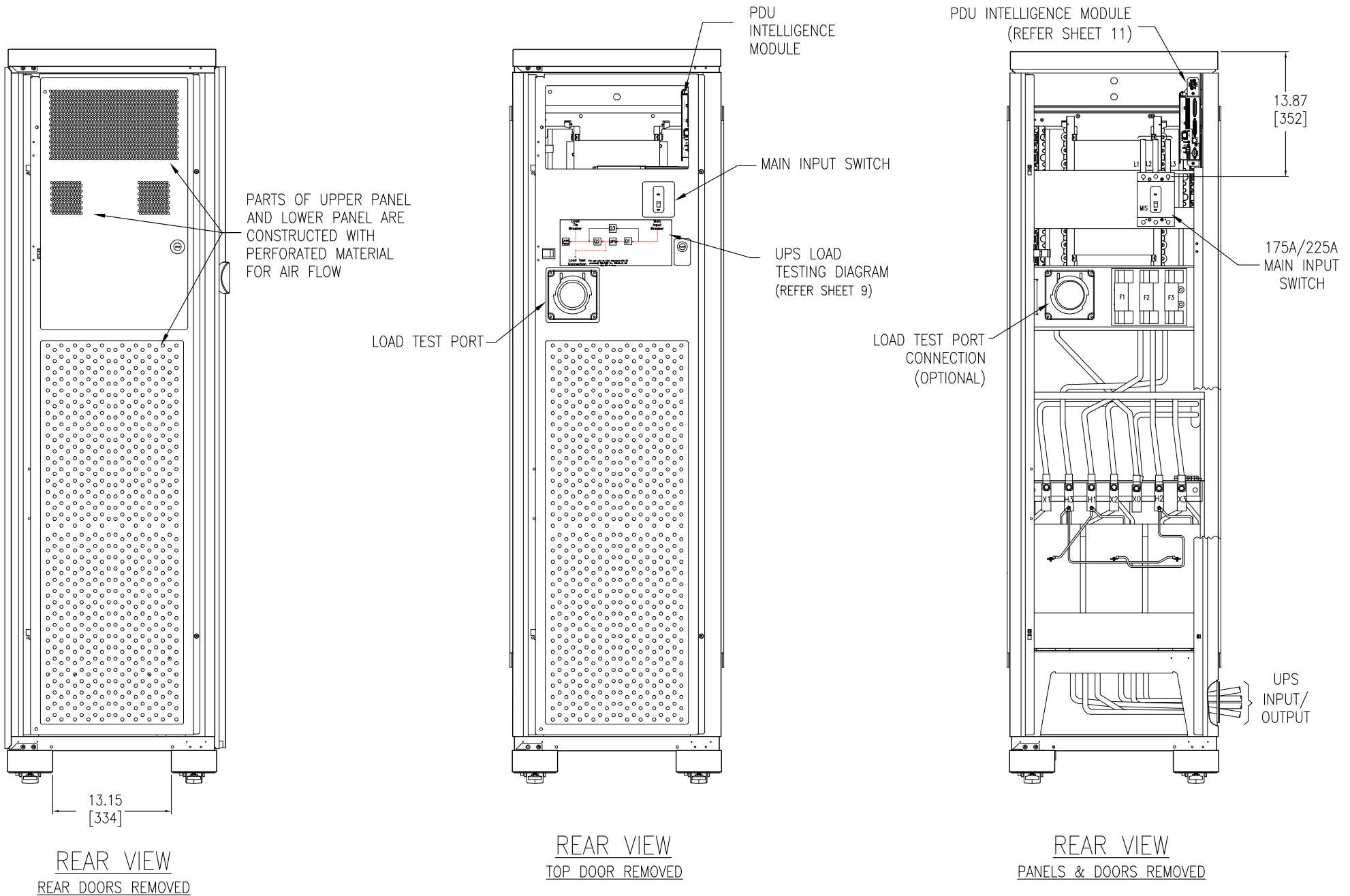
DWG NO: PD40G6FK1-M **REV.** 0

DRAWN BY: JAYAPRAKASH 24-FEB-12 **THIRD**

ENGINEER: J.RING/F.DIOSA 18-MAR-12 **ANGLE**

PROJECT: DRAWINGS **SHEET** 7 OF 13

APPROVED BY: R.HANSEN/E.SILVA 18-MAR-12 **PROJECTION**



NOTES:

1. INSTALLATION SHALL COMPLY WITH ALL APPLICABLE NATIONAL, STATE AND LOCAL CODES.
2. PLEASE REFER TO PRODUCT MANUALS FOR ADDITIONAL DETAILS PRIOR TO INSTALLATION AND SITE PREPARATION WORK.
3. ALL DIMENSIONS ARE IN INCHES [MILLIMETERS], UNLESS OTHERWISE SPECIFIED.
4. SOME STRUCTURAL DETAILS HAVE BEEN OMITTED FOR THE PURPOSE OF CLARITY.

THIS DRAWING AND SPECIFICATIONS HEREIN ARE THE PROPERTY OF SCHNEIDER ELECTRIC AND SHALL NOT BE COPIED, REPRODUCED OR USED IN WHOLE OR IN PART, AS THE BASIS FOR THE MANUFACTURE OR SALE OF ITEMS WITHOUT WRITTEN PERMISSION FROM SCHNEIDER ELECTRIC. THIS DRAWING IS BASED UPON LATEST AVAILABLE INFORMATION AND IS SUBJECT TO CHANGE WITHOUT NOTICE.

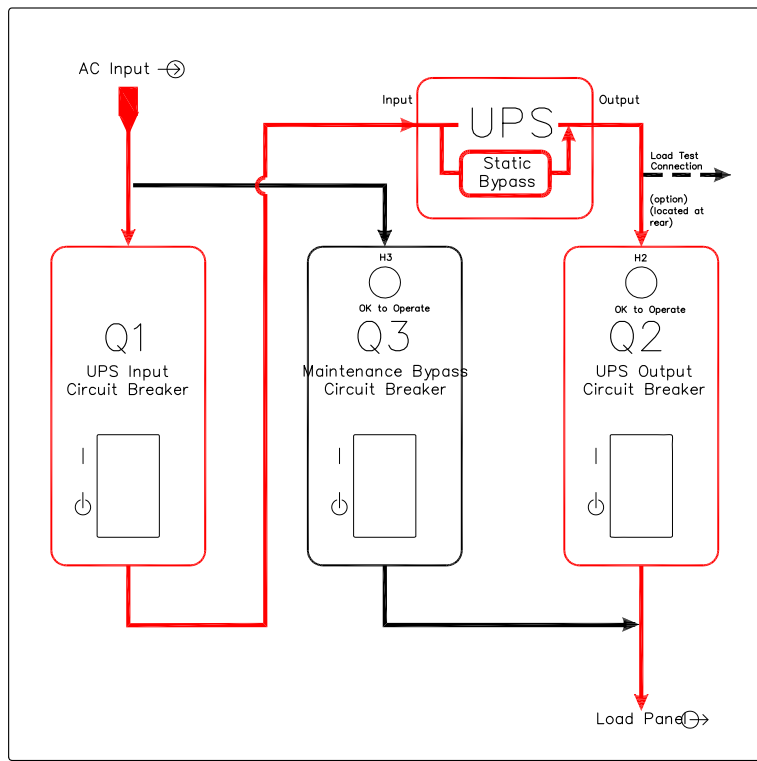


TITLE: CONFIGURABLE POWER DISTRIBUTION
 InfraStruxure PDU 40kW with MBP
 Input: 480V, 3PH, 60Hz
 Output: 208V, 3PH, 60Hz
 REAR VIEWS

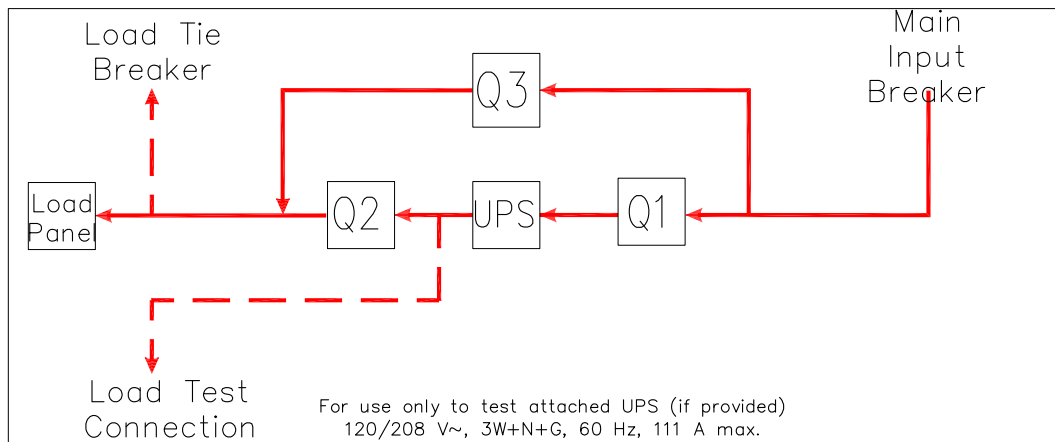
PROJECT: DRAWINGS **SHEET** 8 OF 13

DWG NO: PD40G6FK1-M **REV.** 1

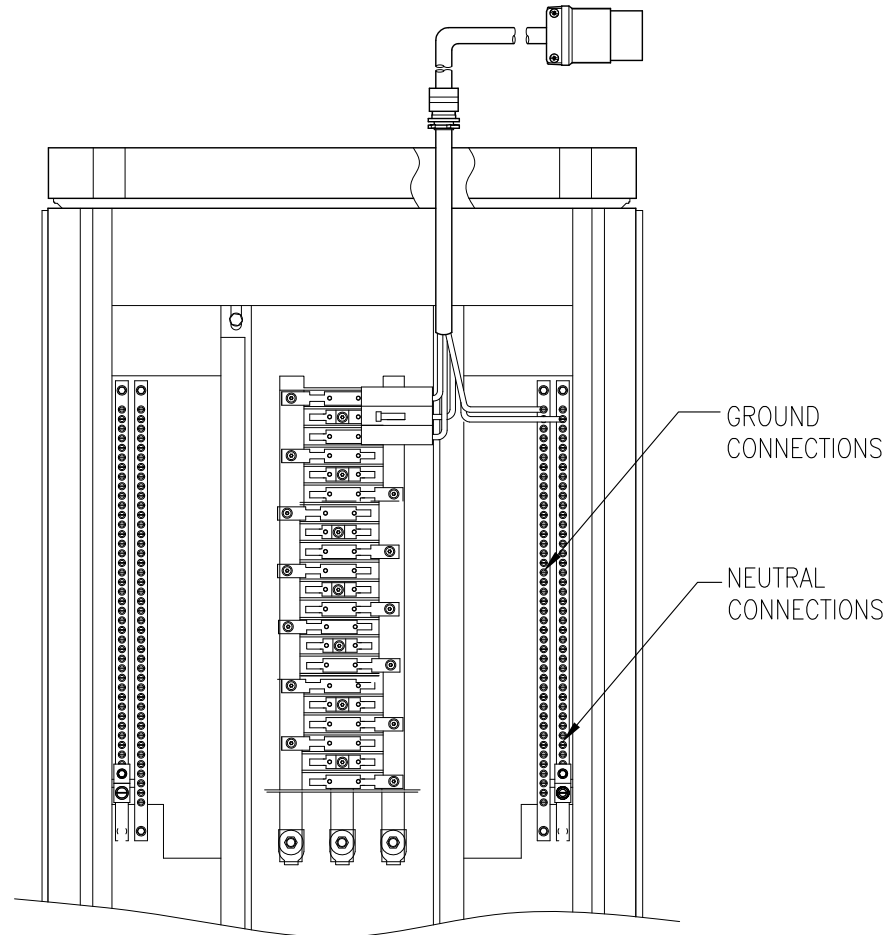
DRAWN BY: JAYAPRAKASH	18-MAY-20	THIRD
ENGINEER: J.RING/F.DIOSA	18-MAY-20	ANGLE
APPROVED BY: R.HANSEN/E.SILVA	18-MAY-20	PROJECTION



MIMIC DIAGRAM



UPS LOAD TESTING DIAGRAM



TYPICAL BREAKER CONNECTION
(ENLARGED VIEW)

NOTES:

1. INSTALLATION SHALL COMPLY WITH ALL APPLICABLE NATIONAL, STATE AND LOCAL CODES.
2. PLEASE REFER TO PRODUCT MANUALS FOR ADDITIONAL DETAILS PRIOR TO INSTALLATION AND SITE PREPARATION WORK.

THIS DRAWING AND SPECIFICATIONS HEREIN ARE THE PROPERTY OF SCHNEIDER ELECTRIC AND SHALL NOT BE COPIED, REPRODUCED OR USED IN WHOLE OR IN PART, AS THE BASIS FOR THE MANUFACTURE OR SALE OF ITEMS WITHOUT WRITTEN PERMISSION FROM SCHNEIDER ELECTRIC. THIS DRAWING IS BASED UPON LATEST AVAILABLE INFORMATION AND IS SUBJECT TO CHANGE WITHOUT NOTICE.



TITLE: CONFIGURABLE POWER DISTRIBUTION
 InfraStruxure PDU 40kW with MBP
 Input: 480V, 3PH, 60Hz
 Output: 208V, 3PH, 60Hz
 MIMIC DIAGRAM & TYPICAL BREAKER CONNECTION
 PROJECT: DRAWINGS SHEET 9 OF 13

DWG NO:	PD40G6FK1-M	REV.	0
DRAWN BY:	JAYAPRAKASH	24-FEB-12	THIRD
ENGINEER:	J.RING/F.DIOSA	18-MAR-12	ANGLE
APPROVED BY:	R.HANSEN/E.SILVA	18-MAR-12	PROJECTION

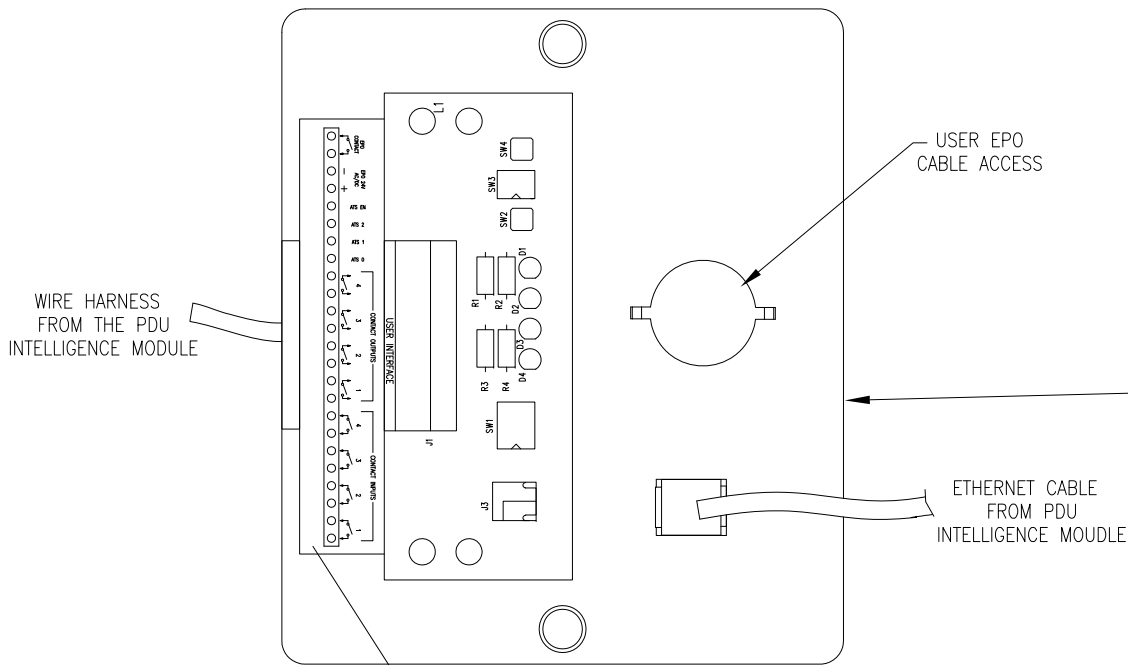
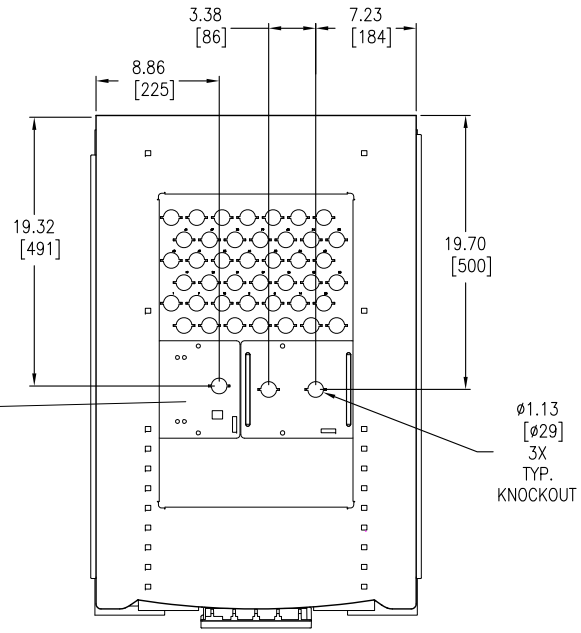
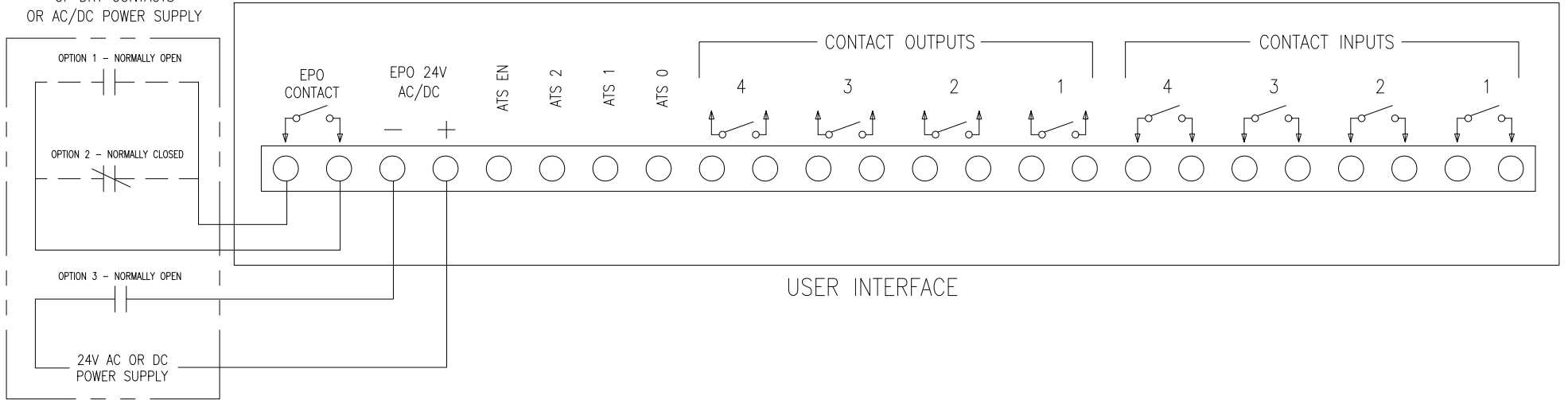


PLATE USER INTERFACE PCBMTG.
BOTTOM VIEW



FRONT
PDU, TOP VIEW
(COVER, DOORS AND CABLE RUN REMOVED)

EPO - EXTERNAL SET
OF DRY CONTACTS
OR AC/DC POWER SUPPLY



USER INTERFACE

NOTES:

1. INSTALLATION SHALL COMPLY WITH ALL APPLICABLE NATIONAL, STATE AND LOCAL CODES.
2. PLEASE REFER TO PRODUCT MANUALS FOR ADDITIONAL DETAILS PRIOR TO INSTALLATION AND SITE PREPARATION WORK.

THIS DRAWING AND SPECIFICATIONS HEREIN ARE THE PROPERTY OF SCHNEIDER ELECTRIC AND SHALL NOT BE COPIED, REPRODUCED OR USED IN WHOLE OR IN PART, AS THE BASIS FOR THE MANUFACTURE OR SALE OF ITEMS WITHOUT WRITTEN PERMISSION FROM SCHNEIDER ELECTRIC. THIS DRAWING IS BASED UPON LATEST AVAILABLE INFORMATION AND IS SUBJECT TO CHANGE WITHOUT NOTICE.



TITLE: CONFIGURABLE POWER DISTRIBUTION
InfraStruxure PDU 40kW with MBP
Input: 480V, 3PH, 60Hz
Output: 208V, 3PH, 60Hz
EPO INTERFACE

PROJECT: DRAWINGS SHEET 10 OF 13

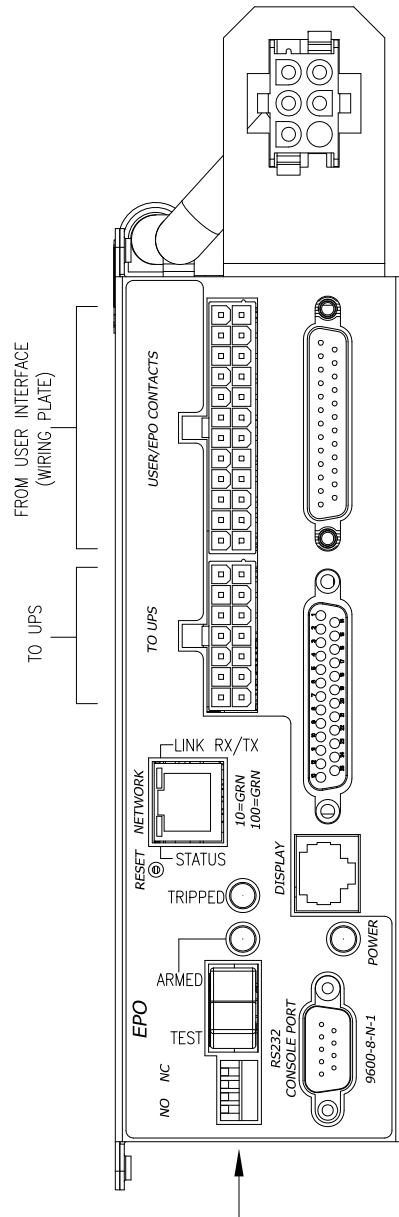
DWG NO: PD40G6FK1-M REV. 0

DRAWN BY: JAYAPRAKASH 24-FEB-12 THIRD

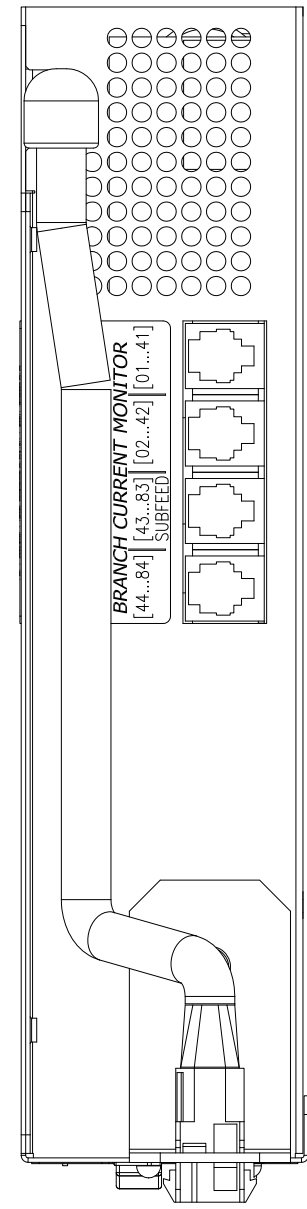
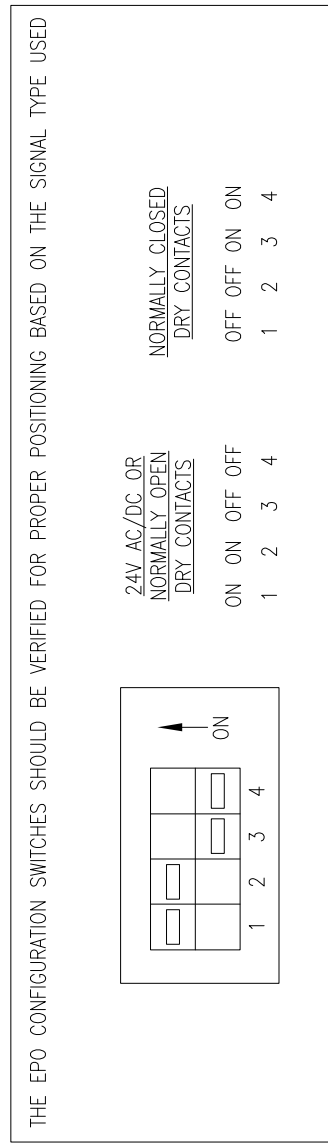
ENGINEER: J.RING/F.DIOSA 18-MAR-12 ANGLE

APPROVED BY: R.HANSEN/E.SILVA 18-MAR-12 PROJECTION

PDU INTELLIGENCE MODULE



FRONT VIEW



TOP VIEW

CONNECTORS ARE PREWIRED IF PDU IS PURCHASED WITH BRANCH CURRENT MONITORING SYSTEM

NOTES:

1. INSTALLATION SHALL COMPLY WITH ALL APPLICABLE NATIONAL, STATE AND LOCAL CODES.
2. PLEASE REFER TO PRODUCT MANUALS FOR ADDITIONAL DETAILS PRIOR TO INSTALLATION AND SITE PREPARATION WORK.

THIS DRAWING AND SPECIFICATIONS HEREIN ARE THE PROPERTY OF SCHNEIDER ELECTRIC AND SHALL NOT BE COPIED, REPRODUCED OR USED IN WHOLE OR IN PART, AS THE BASIS FOR THE MANUFACTURE OR SALE OF ITEMS WITHOUT WRITTEN PERMISSION FROM SCHNEIDER ELECTRIC. THIS DRAWING IS BASED UPON LATEST AVAILABLE INFORMATION AND IS SUBJECT TO CHANGE WITHOUT NOTICE.



TITLE: CONFIGURABLE POWER DISTRIBUTION
 InfraStruxure PDU 40kW with MBP
 Input: 480V, 3PH, 60Hz
 Output: 208V, 3PH, 60Hz
 INTELLIGENCE MODULE

PROJECT: DRAWINGS SHEET 110 OF 13

DWG NO: PD40G6FK1-M REV. 0

DRAWN BY: JAYAPRAKASH 24-FEB-12

ENGINEER: J.RING/F.DIOSA 18-MAR-12

APPROVED BY: R.HANSEN/E.SILVA 18-MAR-12

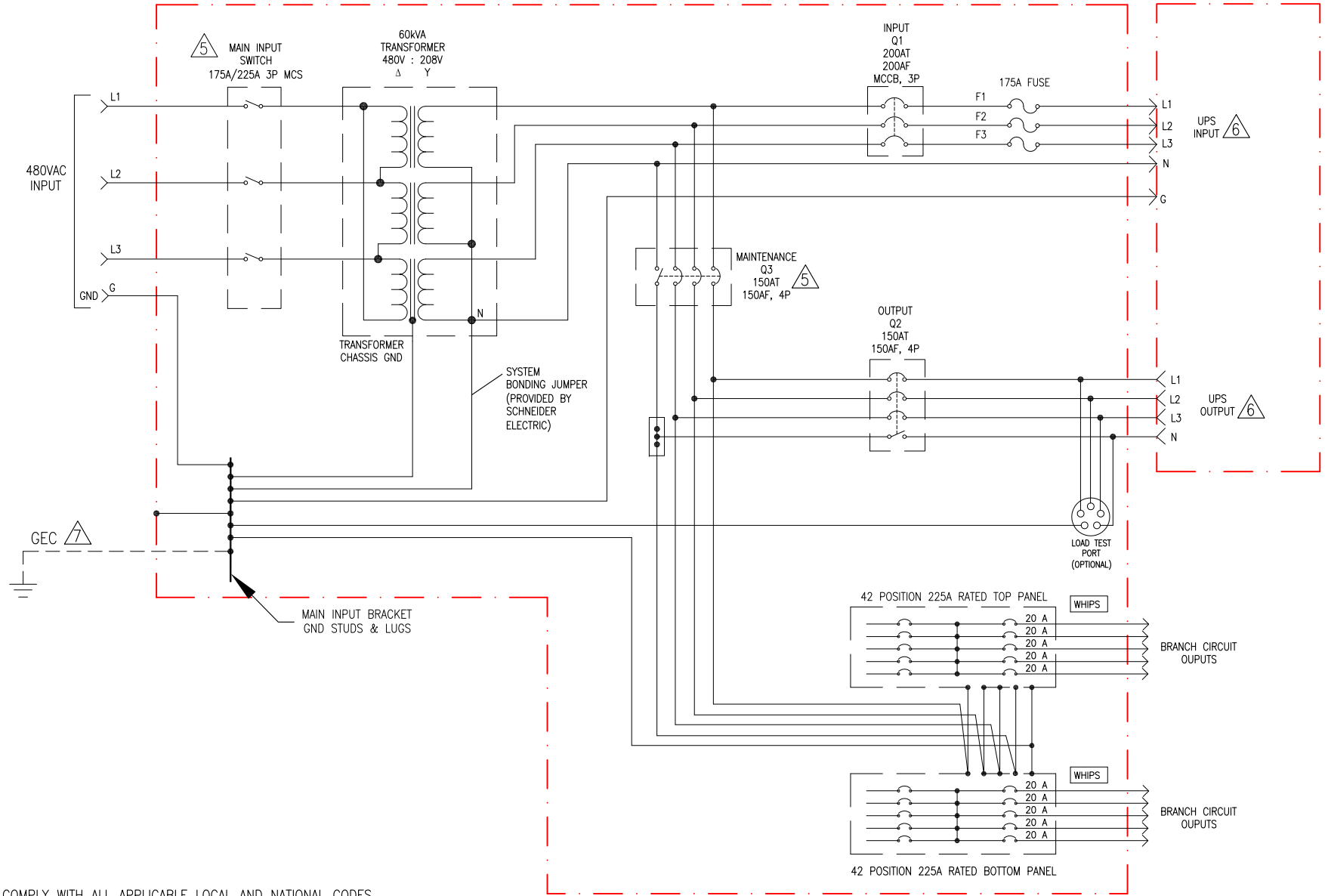
THIRD

ANGLE

PROJECTION

PDU
(POWER DISTRIBUTION UNIT)

CONFIGURABLE POWER DISTRIBUTION 40kW
3 PHASE



NOTES:

1. INSTALLATION SHALL COMPLY WITH ALL APPLICABLE LOCAL AND NATIONAL CODES.
 2. PLEASE REFER TO PRODUCT MANUALS FOR ADDITIONAL DETAILS PRIOR TO INSTALLATION AND SITE PREPARATION WORK.
 3. RACK FRAME AND SKINS ARE ELECTRICALLY CONNECTED AND TIED TO CHASSIS GROUND.
 4. TRANSFORMER BASE IS GROUNDED THROUGH FRAME.
- △ 5. SHUNT TRIP ON EPO SIGNAL
- △ 6. FOR INPUT/OUTPUT CURRENT VALUES PLEASE SEE SYSTEM ONE LINE DIAGRAM FOR CHOSEN CAPACITY
- △ 7. THIS SYSTEM SHALL BE INSTALLED AS A SEPARATELY DERIVED SYSTEM IN ACCORDANCE WITH LOCAL AND NATIONAL CODES
THE GROUNDING ELECTRODE CONDUCTOR (GEC) IS PROVIDED BY OTHERS

THIS DRAWING AND SPECIFICATIONS HEREIN ARE THE PROPERTY OF SCHNEIDER ELECTRIC AND SHALL NOT BE COPIED, REPRODUCED OR USED IN WHOLE OR IN PART, AS THE BASIS FOR THE MANUFACTURE OR SALE OF ITEMS WITHOUT WRITTEN PERMISSION FROM SCHNEIDER ELECTRIC. THIS DRAWING IS BASED UPON LATEST AVAILABLE INFORMATION AND IS SUBJECT TO CHANGE WITHOUT NOTICE.



TITLE: CONFIGURABLE POWER DISTRIBUTION
InfraStructure PDU 40kW with MBP
Input: 480V, 3PH, 60Hz
Output: 208V, 3PH, 60Hz
FIVE LINE DIAGRAM

PROJECT: DRAWINGS SHEET 12 OF 13

DWG NO: PD40G6FK1-M REV. 1

DRAWN BY: JAYAPRAKASH	18-MAY-20	ANGLE
ENGINEER: EMANUEL MARTINEZ	18-MAY-20	PROJECTION
APPROVED BY: VICTOR ESPINOSA	18-MAY-20	N.A

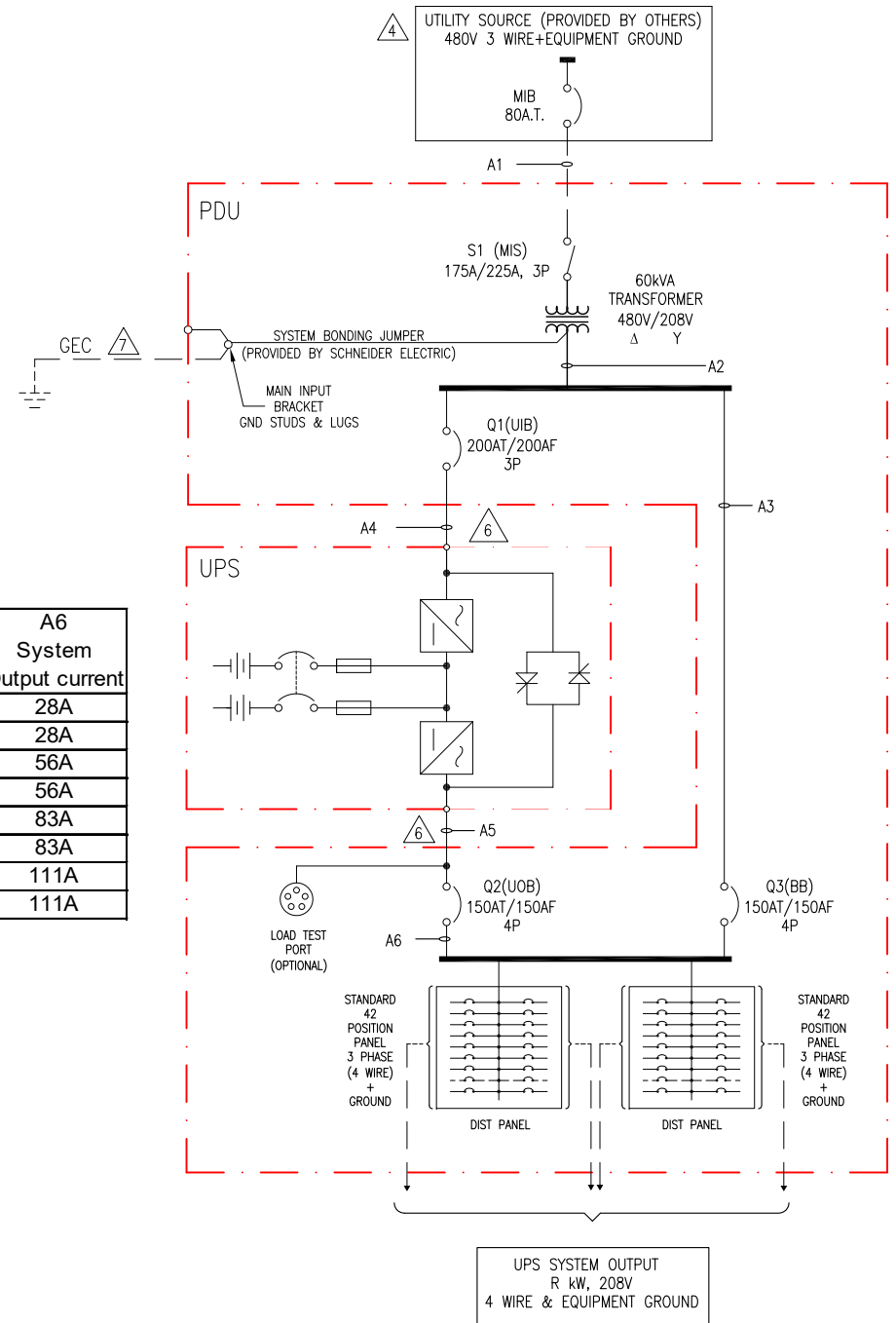
LEGEND:

- AC CABLE – PROVIDED BY OTHERS.
- AC BUS

NOTES:

1. INSTALLATION SHALL COMPLY WITH ALL APPLICABLE LOCAL AND NATIONAL CODES.
2. PLEASE REFER TO PRODUCT MANUALS FOR ADDITIONAL DETAILS PRIOR TO INSTALLATION AND SITE PREPARATION WORK.
3. DRAWING DEPICTS POWER SYSTEM CONNECTIONS AND IS NOT REPRESENTATIVE OF PHYSICAL LAYOUT, PLEASE REFER TO MECHANICAL DRAWINGS FOR PHYSICAL LAYOUT.
- △ 4. AC SOURCE TO BE 480VAC 3PH 3 WIRE + EQUIPMENT GROUND (PROVIDED BY OTHERS).
5. INPUT OVERCURRENT PROTECTION AND WIRING MUST BE INSTALLED FOR A FULLY RATED 40kW SYMMETRA 3 PHASE. INPUT OVERCURRENT PROTECTION IS BASED ON 80% RATING. ANY DEVIATION PLEASE CONTACT SCHNEIDER ELECTRIC.
- △ 6. AC POWER CABLING TO BE 4 WIRE + EQUIPMENT GROUND AT 208VAC 3 PHASE.
- △ 7. THIS SYSTEM SHALL BE INSTALLED AS A SEPARATELY DERIVED SYSTEM IN ACCORDANCE WITH LOCAL AND NATIONAL CODES. THE GROUNDING ELECTRODE CONDUCTOR (GEC) IS PROVIDED BY OTHERS.
8. PLEASE REFER TO THE BELOW TABLE FOR UPS SYSTEM OUTPUT, CONFIGURARION & CURRENT DETAILS.

R	Configuration	A1	A2	A3	A4	A5	A6
UPS System Output Rating		Transformer Input current	Transformer Output current	Bypass Current	UPS Input current	UPS Output current	System Output current
10	N	15A	34A	28A	34A	28A	28A
	N+1	16A	37A	28A	37A	28A	28A
20	N	30A	67A	56A	67A	56A	56A
	N+1	31A	70A	56A	70A	56A	56A
30	N	45A	104A	83A	101A	83A	83A
	N+1	46A	104A	83A	104A	83A	83A
40	N	60A	134A	111A	134A	111A	111A
	N+1	61A	134A	111A	134A	111A	111A



THIS DRAWING AND SPECIFICATIONS HEREIN ARE THE PROPERTY OF SCHNEIDER ELECTRIC AND SHALL NOT BE COPIED, REPRODUCED OR USED IN WHOLE OR IN PART, AS THE BASIS FOR THE MANUFACTURE OR SALE OF ITEMS WITHOUT WRITTEN PERMISSION FROM SCHNEIDER ELECTRIC. THIS DRAWING IS BASED UPON LATEST AVAILABLE INFORMATION AND IS SUBJECT TO CHANGE WITHOUT NOTICE.



TITLE: CONFIGURABLE POWER DISTRIBUTION
 InfraStruxure PDU 40kW with MBP
 Input: 480V, 3PH, 60Hz
 Output: 208V, 3PH, 60Hz
 SYSTEM ONLE LINE DIAGRAM

DWG NO: PD40G6FK1-M
 DRAWN BY: JAYAPRAKASH 18-MAY-20
 ENGINEER: J.RING/F.DIOSA 18-MAY-20
 APPROVED BY: R.HANSEN/E.SILVA 18-MAY-20

REV. 1
 THIRD ANGLE PROJECTION