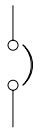



CONFIGURABLE POWER DISTRIBUTION, InfraStruxure PDU 40kW 208V/208V transformerless with MBP

Sheet No.	Component /Detail	Description
1	Draw ing Guide	InfraStruxure PDU 40kW 208V/208V Transformerless w ith MBP
2	Specification	InfraStruxure PDU 40kW 208V/208V Transformerless w ith MBP
3-6	Mechanical Layouts	InfraStruxure PDU 40kW 208V/208V Transformerless w ith MBP
7-11	Internal View s & Details	InfraStruxure PDU 40kW 208V/208V Transformerless w ith MBP
12-13	System One Line /Five line Diagram	InfraStruxure PDU 40kW 208V/208V Transformerless w ith MBP

LEGEND	
SYMBOL	DESCRIPTION
	CIRCUIT BREAKER
	SWITCH

THIS DRAWING AND SPECIFICATIONS HEREIN ARE THE PROPERTY OF SCHNEIDER ELECTRIC AND SHALL NOT BE COPIED, REPRODUCED OR USED IN WHOLE OR IN PART, AS THE BASIS FOR THE MANUFACTURE OR SALE OF ITEMS WITHOUT WRITTEN PERMISSION FROM SCHNEIDER ELECTRIC. THIS DRAWING IS BASED UPON LATEST AVAILABLE INFORMATION AND IS SUBJECT TO CHANGE WITHOUT NOTICE.



TITLE: CONFIGURABLE POWER DISTRIBUTION
 InfraStruxure PDU 40kW TRANSFORMERLESS W/ MBP
 Input: 208V, 3PH, 60Hz
 Output: 208V, 3PH, 60Hz
 DRAWING GUIDE
 PROJECT: DRAWINGS SHEET 1 OF 13

DWG NO: PDRPPNX10-M
 DRAWN BY: JAYAPRAKASH
 ENGINEER: J.RING/F.DIOSA
 APPROVED BY: R.HANSEN/E.SILVA

REV: 0
 03-MAR-12
 19-MAR-12
 19-MAR-12
 ANGLE
 PROJECTION
 N/A

CONFIGURABLE POWER DISTRIBUTION - SPECIFICATIONS

1. AC Input

- 1.1 Nominal voltage : 208V 3PH WYE, 4W+G (provided by others)
- 1.2 Frequency : 60Hz
- 1.3 Input Circuit Breaker : 175A.T
- 1.4 Maximum continuous current : 155A
- 1.5 Main Input conductor size : 3/0 AWG

2. AC Output

- 2.1 Nominal voltage : 208V 3PH 4W+N
- 2.2 Maximum continuous current : 139A
- 2.3 Full Load rating : 40kW
- 2.4 Distribution Panel : 2 x 225A, 42-position
- 2.5 Distribution Breaker Size : 150A (Max)

3. ENVIRONMENTS

- 3.1 The assembly is made for an ambient temperature for operation of : 0°C to 40°C.
- 3.2 The assembly is made for an ambient temperature for storage of : 0°C to 45°C.

4. ENCLOSURE

- 4.1 The assembly material is steel with surface coating.
- 4.2 The assembly is made for Indoor floor Installation.

5. CONNECTIONS

- 5.1 Incoming and outgoing cables to be connected to terminals in component section.
- 5.2 Input cable entry is through side, top or bottom of the unit.

NOTES:

1. INSTALLATION SHALL COMPLY WITH ALL APPLICABLE NATIONAL, STATE AND LOCAL CODES.
2. PLEASE REFER TO PRODUCT MANUALS FOR ADDITIONAL DETAILS PRIOR TO INSTALLATION AND SITE PREPARATION WORK.

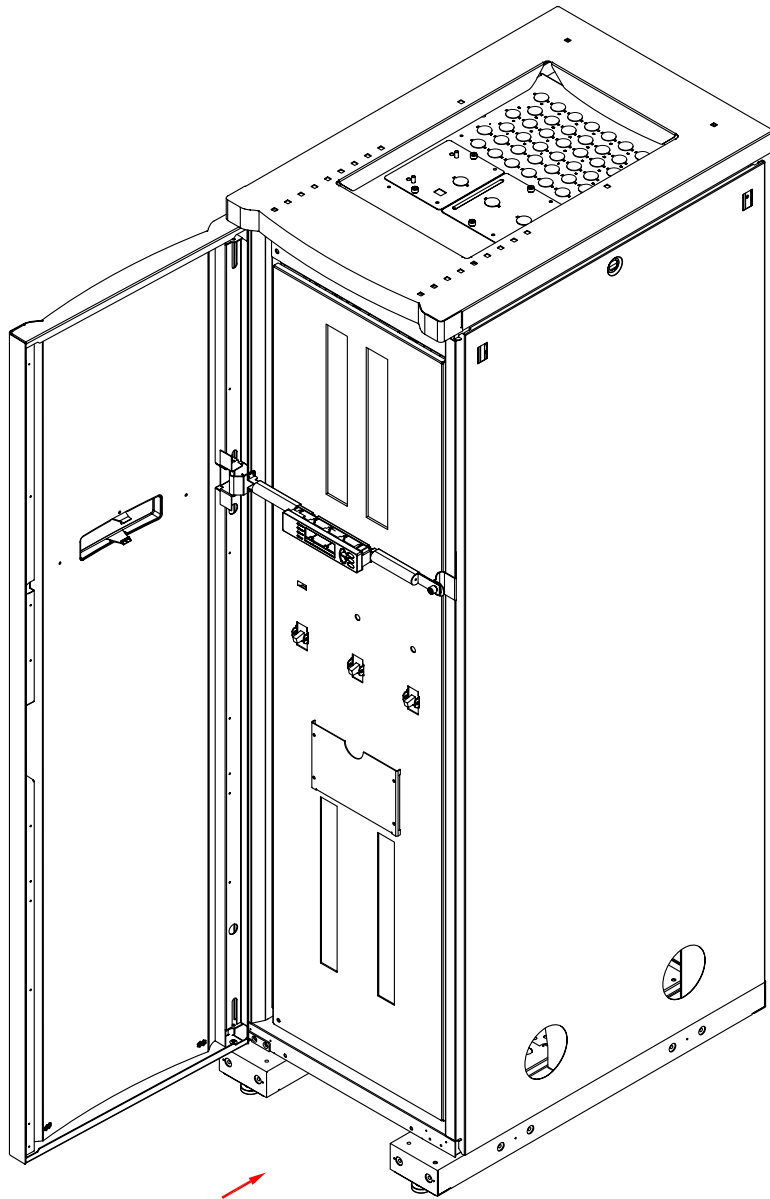
THIS DRAWING AND SPECIFICATIONS HEREIN ARE THE PROPERTY OF SCHNEIDER ELECTRIC AND SHALL NOT BE COPIED, REPRODUCED OR USED IN WHOLE OR IN PART, AS THE BASIS FOR THE MANUFACTURE OR SALE OF ITEMS WITHOUT WRITTEN PERMISSION FROM SCHNEIDER ELECTRIC. THIS DRAWING IS BASED UPON LATEST AVAILABLE INFORMATION AND IS SUBJECT TO CHANGE WITHOUT NOTICE.



TITLE: CONFIGURABLE POWER DISTRIBUTION
InfraStruxure PDU 40kW TRANSFORMERLESS W/ MBP
Input: 208V, 3PH, 60Hz
Output: 208V, 3PH, 60Hz
SPECIFICATIONS

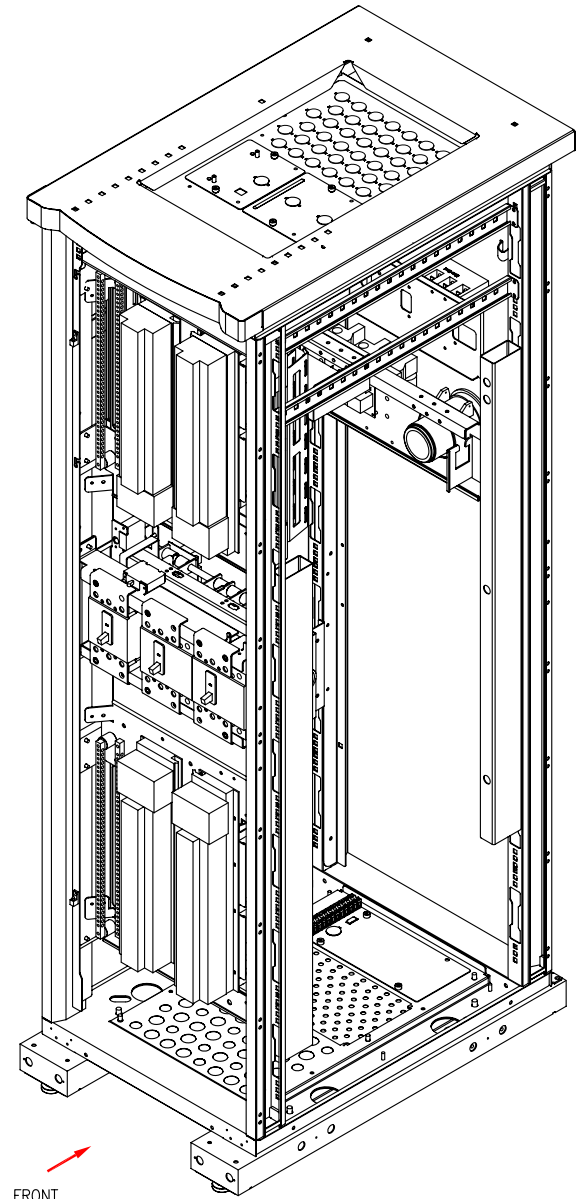
PROJECT: DRAWINGS SHEET 2 OF 13

DWG NO:	PDRPPNX10-M	REV:	0
DRAWN BY:	JAYAPRAKASH	03-MAR-12	ANGLE
ENGINEER:	J.RING/F.DIOSA	19-MAR-12	PROJECTION
APPROVED BY:	R.HANSEN/E.SILVA	19-MAR-12	N/A



FRONT

ISOMETRIC VIEW



FRONT

ISOMETRIC VIEW
(INSIDE PANELS REMOVED)

NOTES:

1. INSTALLATION SHALL COMPLY WITH ALL APPLICABLE NATIONAL, STATE AND LOCAL CODES.
2. PLEASE REFER TO PRODUCT MANUALS FOR ADDITIONAL DETAILS PRIOR TO INSTALLATION AND SITE PREPARATION WORK.

THIS DRAWING AND SPECIFICATIONS HEREIN ARE THE PROPERTY OF SCHNEIDER ELECTRIC AND SHALL NOT BE COPIED, REPRODUCED OR USED IN WHOLE OR IN PART, AS THE BASIS FOR THE MANUFACTURE OR SALE OF ITEMS WITHOUT WRITTEN PERMISSION FROM SCHNEIDER ELECTRIC. THIS DRAWING IS BASED UPON LATEST AVAILABLE INFORMATION AND IS SUBJECT TO CHANGE WITHOUT NOTICE.



TITLE: CONFIGURABLE POWER DISTRIBUTION
 InfraStruxure PDU 40kW TRANSFORMERLESS W/ MBP
 Input: 208V, 3PH, 60Hz
 Output: 208V, 3PH, 60Hz
 ISOMETRIC VIEW

DWG NO: PDRPPNX10-M

REV. 0

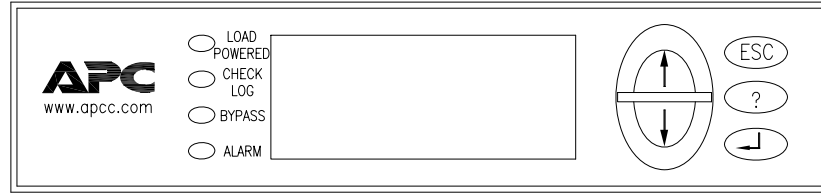
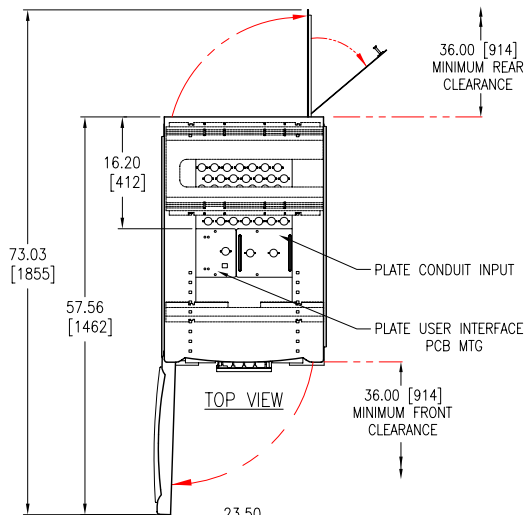
DRAWN BY: JAYAPRAKASH 03-MAR-12

ENGINEER: J.RING/F.DIOSA 19-MAR-12

PROJECT: DRAWINGS SHEET 3 OF 13

APPROVED BY: R.HANSEN/E.SILVA 19-MAR-12

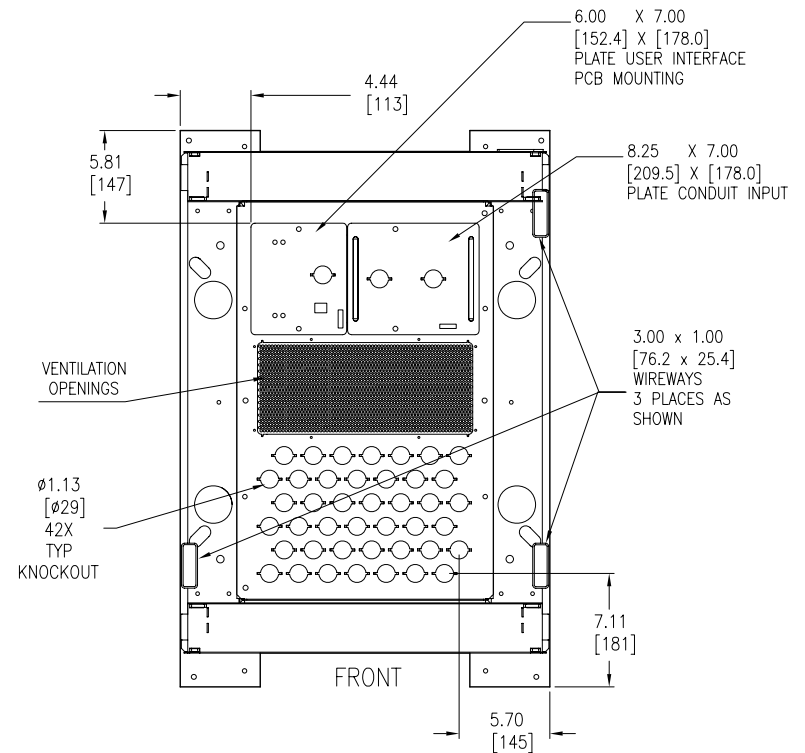
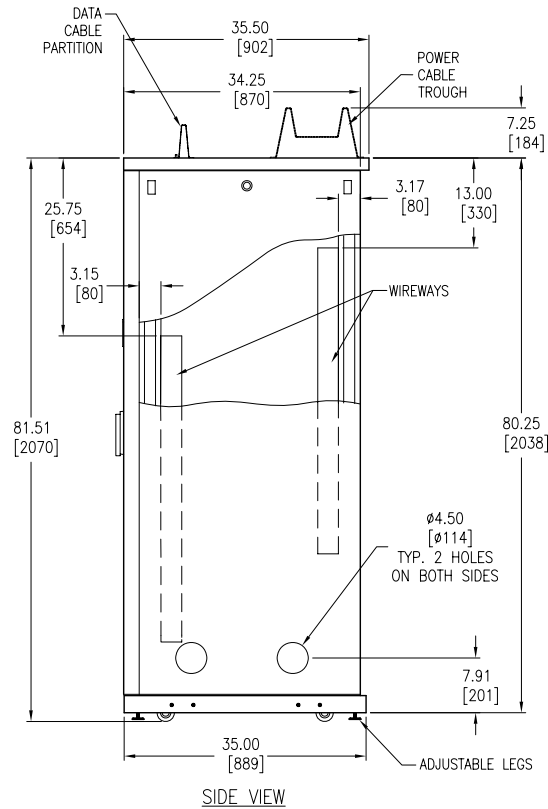
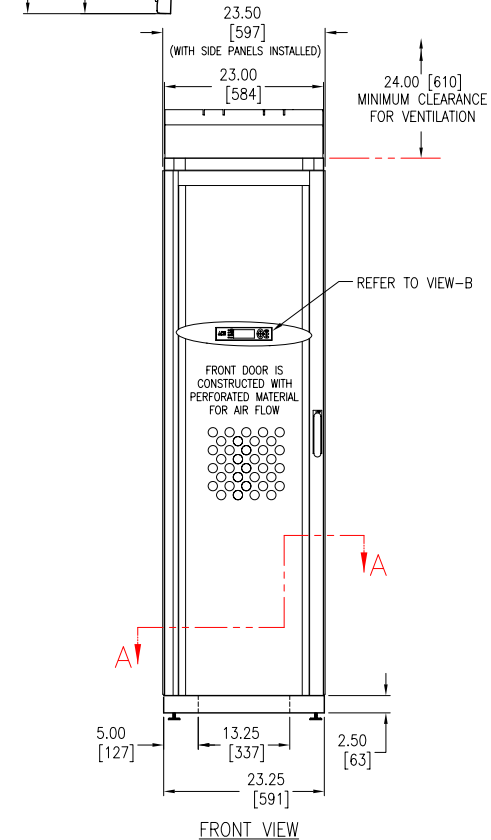
THIRD
 ANGLE
 PROJECTION



DETAIL-B (ENLARGED)
 CONTROL PANEL

NOTES:

1. INSTALLATION SHALL COMPLY WITH ALL APPLICABLE NATIONAL, STATE AND LOCAL CODES.
2. PLEASE REFER TO PRODUCT MANUALS FOR ADDITIONAL DETAILS PRIOR TO INSTALLATION AND SITE PREPARATION WORK.
3. ALL DIMENSIONS ARE IN INCHES [MILLIMETERS], UNLESS OTHERWISE SPECIFIED.
4. CABLE ENTRY IS FROM SIDE, TOP OR BOTTOM OF THE UNIT.
5. FRONT AND REAR ACCESS ARE REQUIRED FOR SERVICE.
6. WEIGHT OF THE UNIT IS 506 lb [230 kg].
7. FLOOR LOADING: 88 lb/ft² [429 kg/meter²].
8. OPERATING TEMPERATURE: 32-104°F [0-40°C].
9. DATA CABLE PARTITION AND POWER CABLE TROUGH ARE NOT PART OF THE SKU.
10. COLOR: BLACK.



SECTION A-A (ENLARGED VIEW)
 (FRONT & REAR DOOR NOT SHOWN)

THIS DRAWING AND SPECIFICATIONS HEREIN ARE THE PROPERTY OF SCHNEIDER ELECTRIC AND SHALL NOT BE COPIED, REPRODUCED OR USED IN WHOLE OR IN PART, AS THE BASIS FOR THE MANUFACTURE OR SALE OF ITEMS WITHOUT WRITTEN PERMISSION FROM SCHNEIDER ELECTRIC. THIS DRAWING IS BASED UPON LATEST AVAILABLE INFORMATION AND IS SUBJECT TO CHANGE WITHOUT NOTICE.



TITLE: CONFIGURABLE POWER DISTRIBUTION
 InfraStruxure PDU 40kW TRANSFORMERLESS W/ MBP
 Input: 208V, 3PH, 60Hz
 Output: 208V, 3PH, 60Hz
 GENERAL ARRANGEMENT

DWG NO: PDRPPNX10-M REV. 0

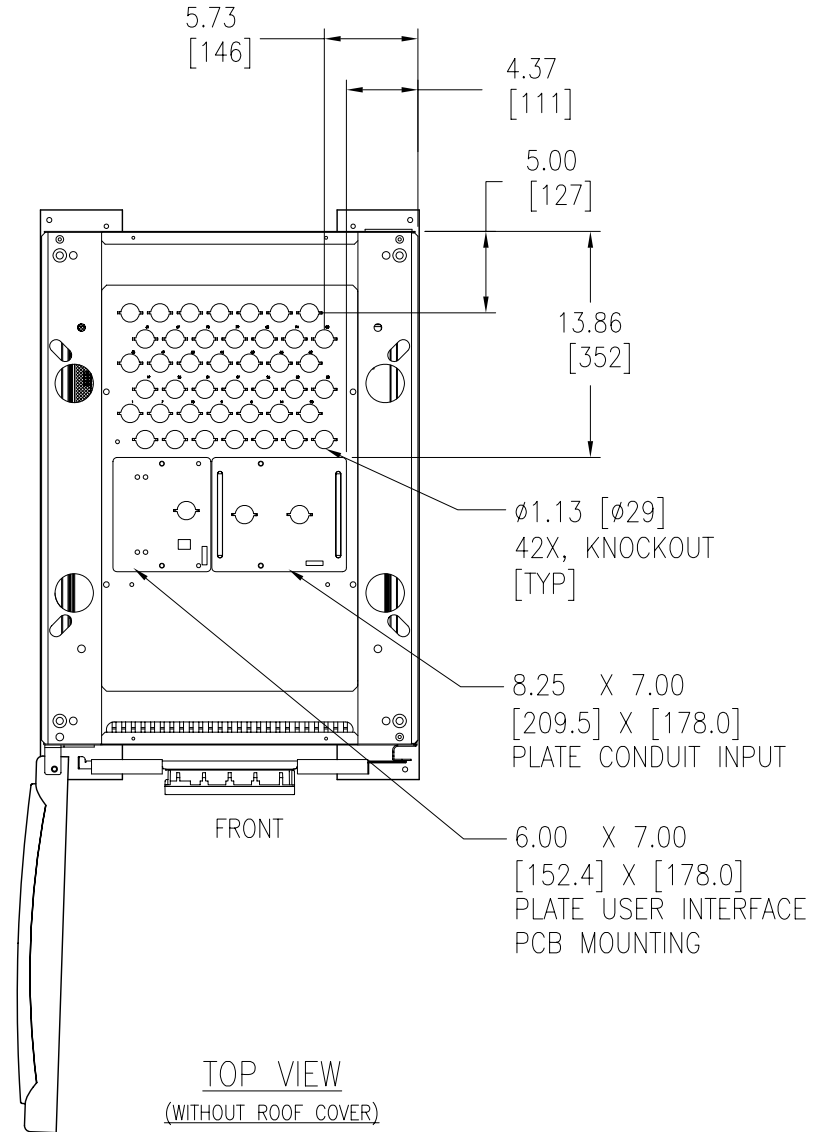
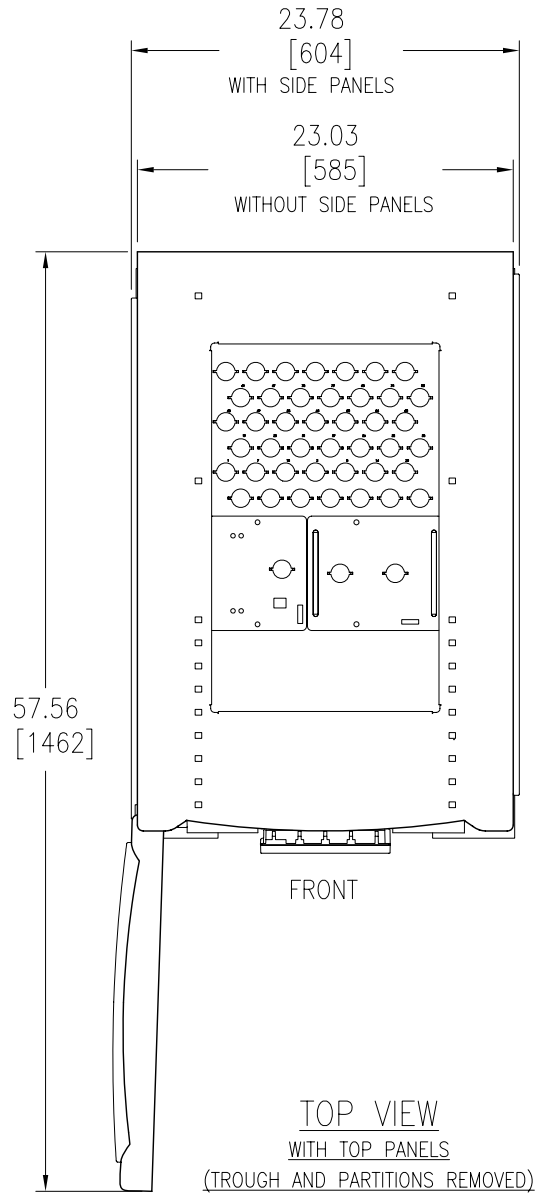
DRAWN BY: JAYAPRAKASH 03-MAR-12

ENGINEER: J.RING/F.DIOSA 19-MAR-12

PROJECT: DRAWINGS SHEET 4 OF 13

APPROVED BY: R.HANSEN/E.SILVA 19-MAR-12

THIRD ANGLE PROJECTION



NOTES:

1. INSTALLATION SHALL COMPLY WITH ALL APPLICABLE NATIONAL, STATE AND LOCAL CODES.
2. PLEASE REFER TO PRODUCT MANUALS FOR ADDITIONAL DETAILS PRIOR TO INSTALLATION AND SITE PREPARATION WORK.
3. ALL DIMENSIONS ARE IN INCHES [MILLIMETERS], UNLESS OTHERWISE SPECIFIED.

THIS DRAWING AND SPECIFICATIONS HEREIN ARE THE PROPERTY OF SCHNEIDER ELECTRIC AND SHALL NOT BE COPIED, REPRODUCED OR USED IN WHOLE OR IN PART, AS THE BASIS FOR THE MANUFACTURE OR SALE OF ITEMS WITHOUT WRITTEN PERMISSION FROM SCHNEIDER ELECTRIC. THIS DRAWING IS BASED UPON LATEST AVAILABLE INFORMATION AND IS SUBJECT TO CHANGE WITHOUT NOTICE.



TITLE: CONFIGURABLE POWER DISTRIBUTION
 InfraStruxure PDU 40kW TRANSFORMERLESS W/ MBP
 Input: 208V, 3PH, 60Hz
 Output: 208V, 3PH, 60Hz
 TOP VIEWS

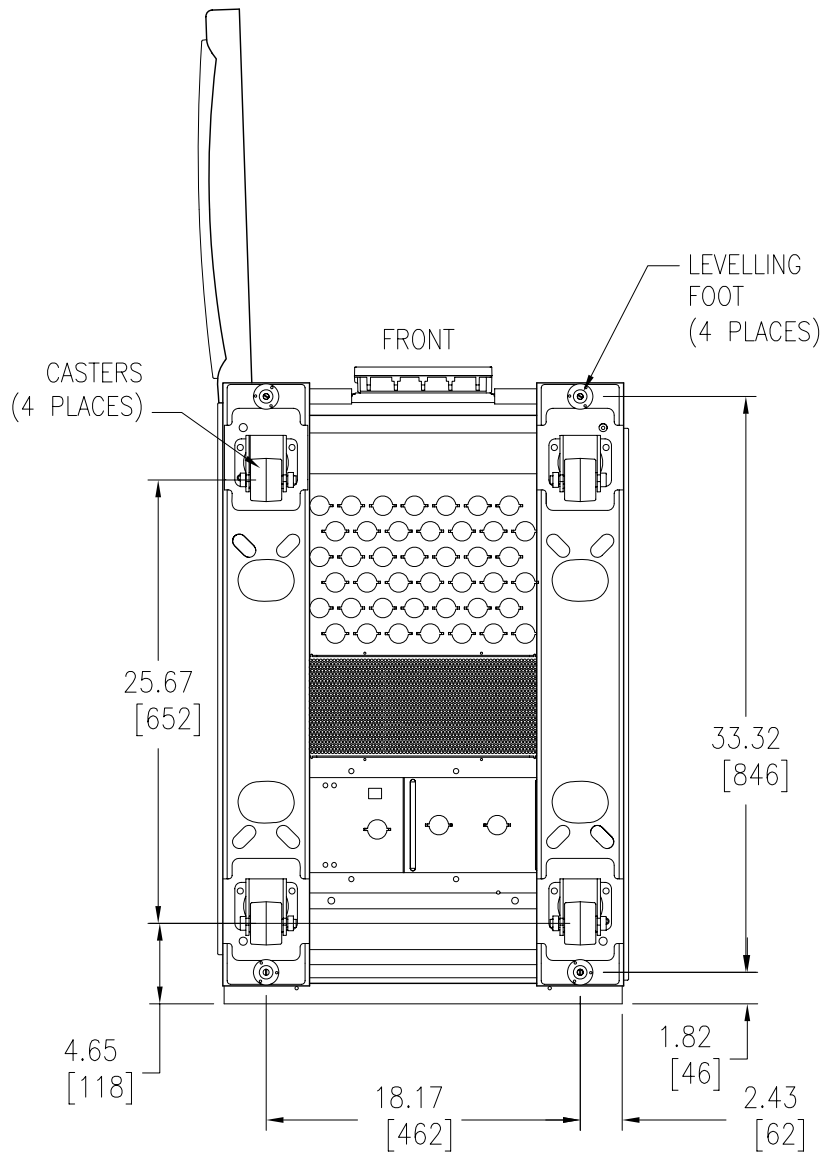
DWG NO: PDRPPNX10-M REV. 0

DRAWN BY: JAYAPRAKASH 03-MAR-12 THIRD ANGLE

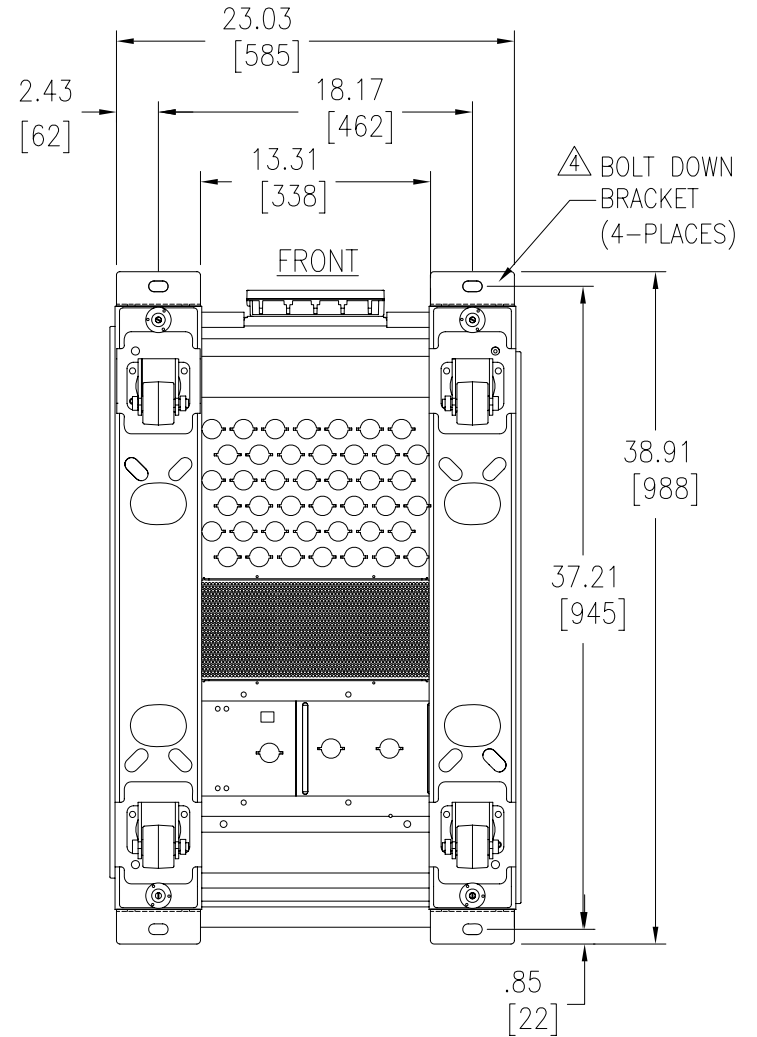
ENGINEER: J.RING/F.DIOSA 19-MAR-12 PROJECTION

PROJECT: DRAWINGS SHEET 5 OF 13

APPROVED BY: R.HANSEN/E.SILVA 19-MAR-12



BOTTOM VIEW



BOTTOM VIEW
FRONT & REAR DOOR NOT SHOWN
(ANCHORING DETAILS WITH
BOLT DOWN BRACKETS)

NOTES:

1. INSTALLATION SHALL COMPLY WITH ALL APPLICABLE NATIONAL, STATE AND LOCAL CODES.
2. PLEASE REFER TO PRODUCT MANUALS FOR ADDITIONAL DETAILS PRIOR TO INSTALLATION AND SITE PREPARATION WORK.
3. ALL DIMENSIONS ARE IN INCHES [MILLIMETERS], UNLESS OTHERWISE SPECIFIED.

△4. TO STABILIZE THE ENCLOSURE (IF IT IS NOT JOINED WITH ANOTHER COMPONENT) USE THE AR8112BLK BOLT-DOWN KIT. ATTACH THE BRACKETS TO THE UNIT AS SHOWN. USE CODE COMPLIANT FASTENERS TO SECURE THE UNIT TO THE FLOOR.

THIS DRAWING AND SPECIFICATIONS HEREIN ARE THE PROPERTY OF SCHNEIDER ELECTRIC AND SHALL NOT BE COPIED, REPRODUCED OR USED IN WHOLE OR IN PART, AS THE BASIS FOR THE MANUFACTURE OR SALE OF ITEMS WITHOUT WRITTEN PERMISSION FROM SCHNEIDER ELECTRIC. THIS DRAWING IS BASED UPON LATEST AVAILABLE INFORMATION AND IS SUBJECT TO CHANGE WITHOUT NOTICE.



TITLE: CONFIGURABLE POWER DISTRIBUTION
InfraStruxure PDU 40kW TRANSFORMERLESS W/ MBP
Input: 208V, 3PH, 60Hz
Output: 208V, 3PH, 60Hz
BOTTOM VIEW & ANCHORING DETAILS

DWG NO: PDRPPNX10-M REV. 0

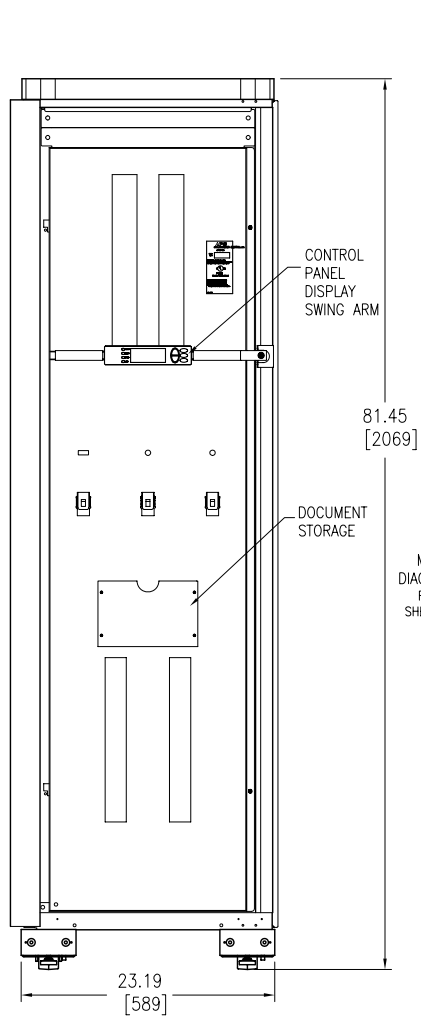
DRAWN BY: JAYAPRAKASH 03-MAR-12

ENGINEER: J.RING/F.DIOSA 19-MAR-12

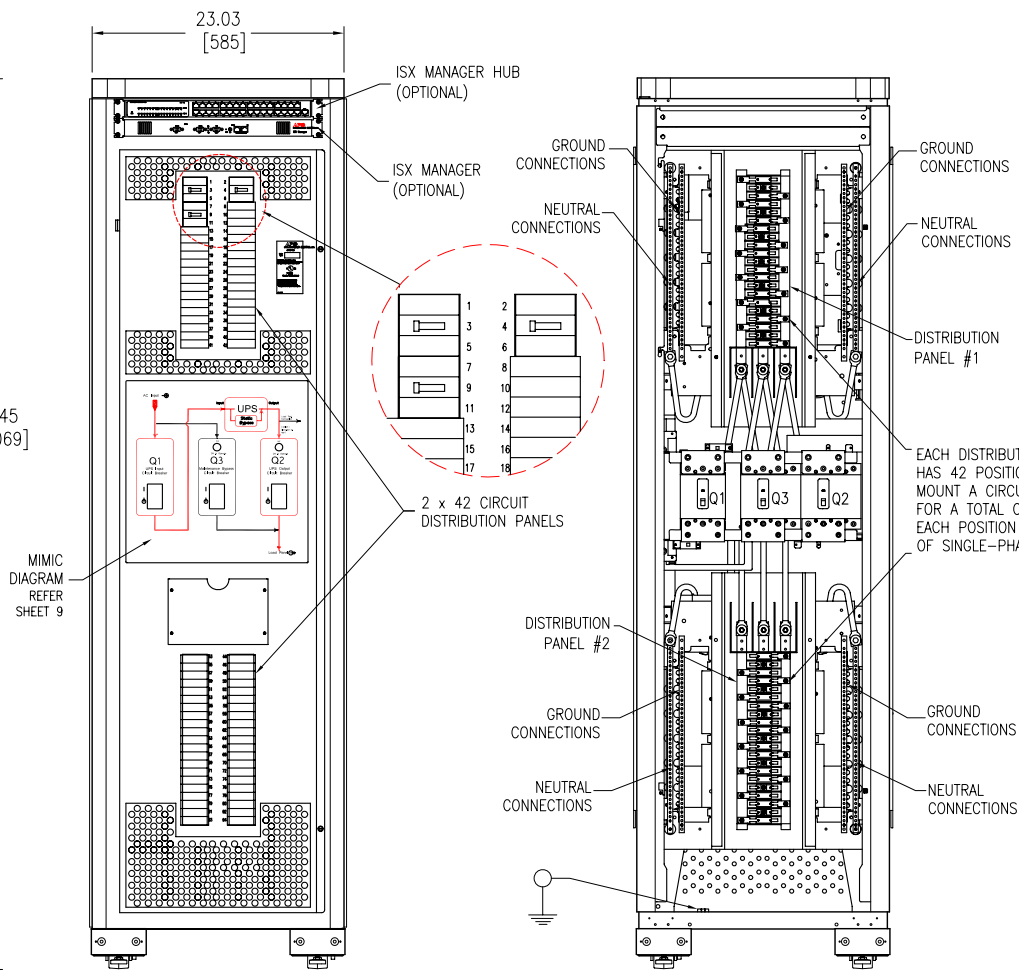
PROJECT: DRAWINGS SHEET 6 OF 13

APPROVED BY: R.HANSEN/E.SILVA 19-MAR-12

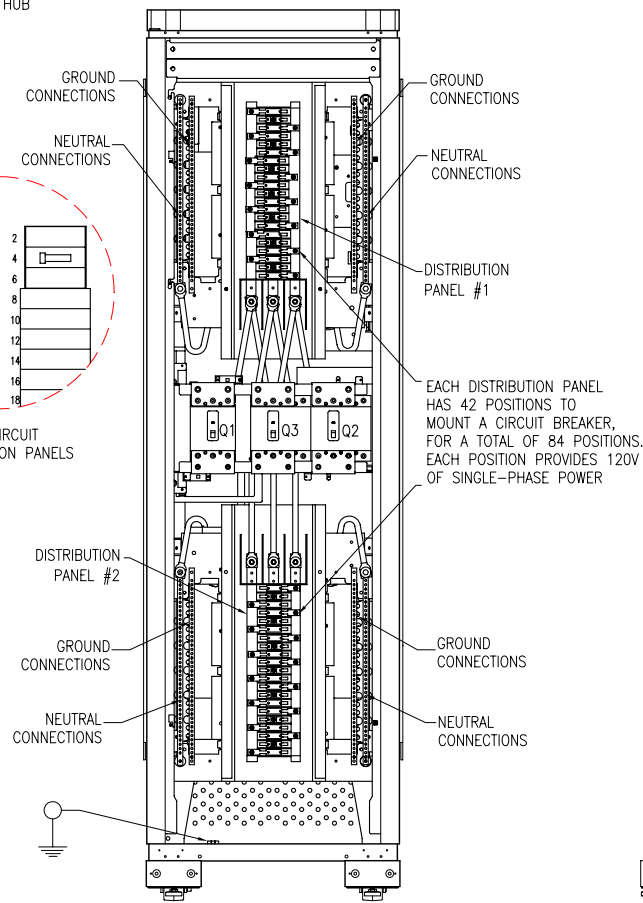
THIRD ANGLE PROJECTION



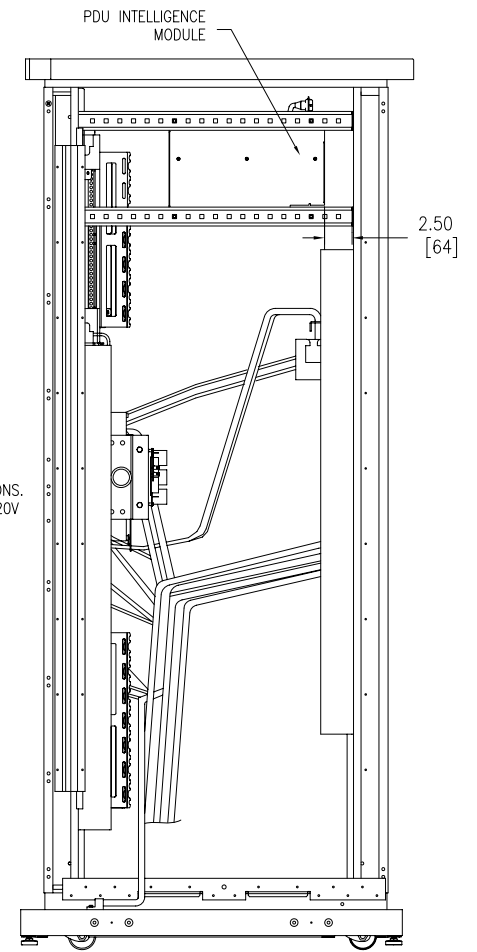
FRONT VIEW
FRONT DOOR OPENED



FRONT VIEW
FRONT DOOR REMOVED



FRONT VIEW
DOOR AND DEAD FRONT PANEL REMOVED



LEFT SIDE VIEW
SIDE PANEL REMOVED

NOTES:

1. INSTALLATION SHALL COMPLY WITH ALL APPLICABLE NATIONAL, STATE AND LOCAL CODES.
2. PLEASE REFER TO PRODUCT MANUALS FOR ADDITIONAL DETAILS PRIOR TO INSTALLATION AND SITE PREPARATION WORK.
3. ALL DIMENSIONS ARE IN INCHES [MILLIMETERS], UNLESS OTHERWISE SPECIFIED.
4. SOME STRUCTURAL DETAILS HAVE BEEN OMITTED FOR THE PURPOSE OF CLARITY.

THIS DRAWING AND SPECIFICATIONS HEREIN ARE THE PROPERTY OF SCHNEIDER ELECTRIC AND SHALL NOT BE COPIED, REPRODUCED OR USED IN WHOLE OR IN PART, AS THE BASIS FOR THE MANUFACTURE OR SALE OF ITEMS WITHOUT WRITTEN PERMISSION FROM SCHNEIDER ELECTRIC. THIS DRAWING IS BASED UPON LATEST AVAILABLE INFORMATION AND IS SUBJECT TO CHANGE WITHOUT NOTICE.

Schneider Electric

TITLE: CONFIGURABLE POWER DISTRIBUTION
 InfraStruxure PDU 40kW TRANSFORMERLESS W/ MBP
 Input: 208V, 3PH, 60Hz
 Output: 208V, 3PH, 60Hz
 INTERNAL VIEW

PROJECT: DRAWINGS SHEET 7 OF 13

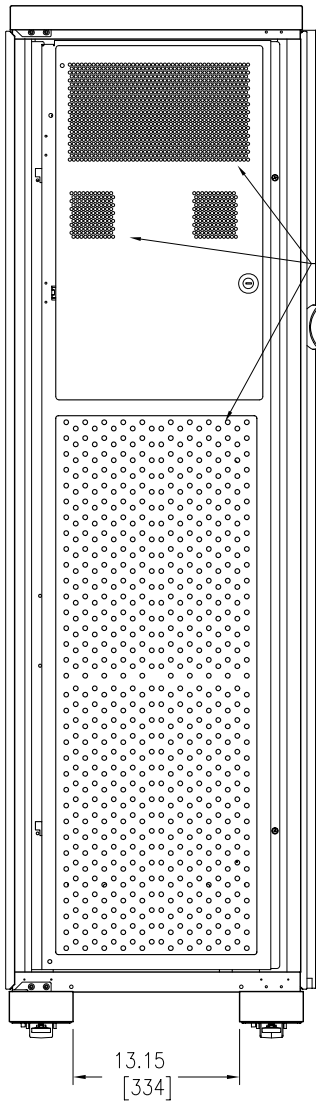
DWG NO: PDRPPNX10-M REV. 0

DRAWN BY: JAYAPRAKASH 03-MAR-12

ENGINEER: J.RING/F.DIOSA 19-MAR-12

APPROVED BY: R.HANSEN/E.SILVA 19-MAR-12

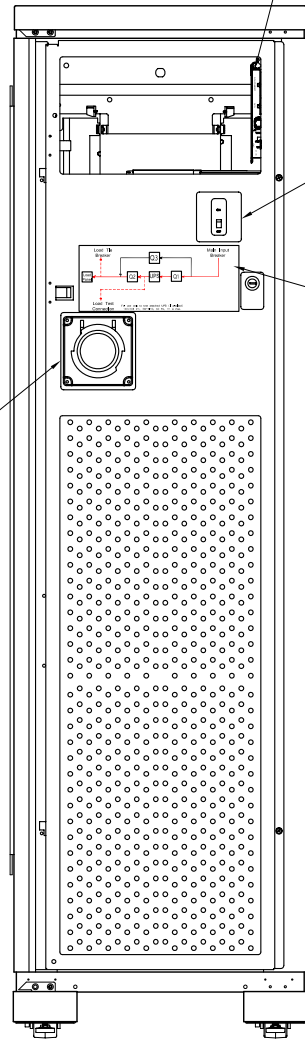
THIRD ANGLE PROJECTION



REAR VIEW
REAR DOORS REMOVED

PARTS OF UPPER PANEL AND LOWER PANEL ARE CONSTRUCTED WITH PERFORATED MATERIAL FOR AIR FLOW

LOAD TEST PORT



REAR VIEW
TOP DOOR REMOVED

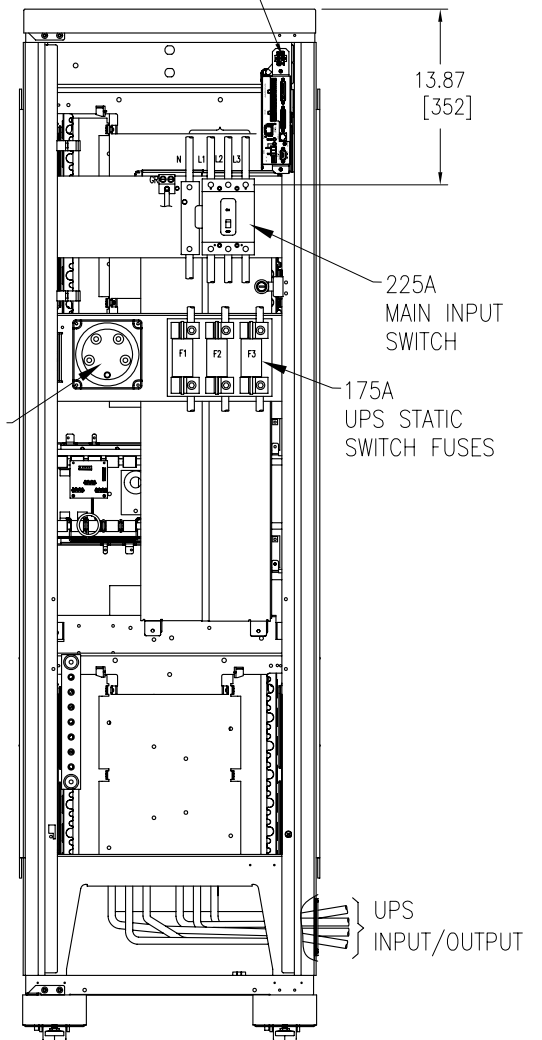
PDU INTELLIGENCE MODULE

MAIN INPUT SWITCH

UPS LOAD TESTING DIAGRAM (REFER SHEET 9)

PDU INTELLIGENCE MODULE (REFER SHEET 11)

LOAD TEST BANK CONNECTION (OPTIONAL)



REAR VIEW
PANELS & DOORS REMOVED

UPS INPUT/OUTPUT

NOTES:

1. INSTALLATION SHALL COMPLY WITH ALL APPLICABLE NATIONAL, STATE AND LOCAL CODES.
2. PLEASE REFER TO PRODUCT MANUALS FOR ADDITIONAL DETAILS PRIOR TO INSTALLATION AND SITE PREPARATION WORK.
3. ALL DIMENSIONS ARE IN INCHES [MILLIMETERS], UNLESS OTHERWISE SPECIFIED.
4. SOME STRUCTURAL DETAILS HAVE BEEN OMITTED FOR THE PURPOSE OF CLARITY.

THIS DRAWING AND SPECIFICATIONS HEREIN ARE THE PROPERTY OF SCHNEIDER ELECTRIC AND SHALL NOT BE COPIED, REPRODUCED OR USED IN WHOLE OR IN PART, AS THE BASIS FOR THE MANUFACTURE OR SALE OF ITEMS WITHOUT WRITTEN PERMISSION FROM SCHNEIDER ELECTRIC. THIS DRAWING IS BASED UPON LATEST AVAILABLE INFORMATION AND IS SUBJECT TO CHANGE WITHOUT NOTICE.

Schneider Electric

TITLE: CONFIGURABLE POWER DISTRIBUTION
 InfraStruxure PDU 40kW TRANSFORMERLESS W/ MBP
 Input: 208V, 3PH, 60Hz
 Output: 208V, 3PH, 60Hz
 REAR VIEWS

DWG NO: PDRPPNX10-M REV. 0

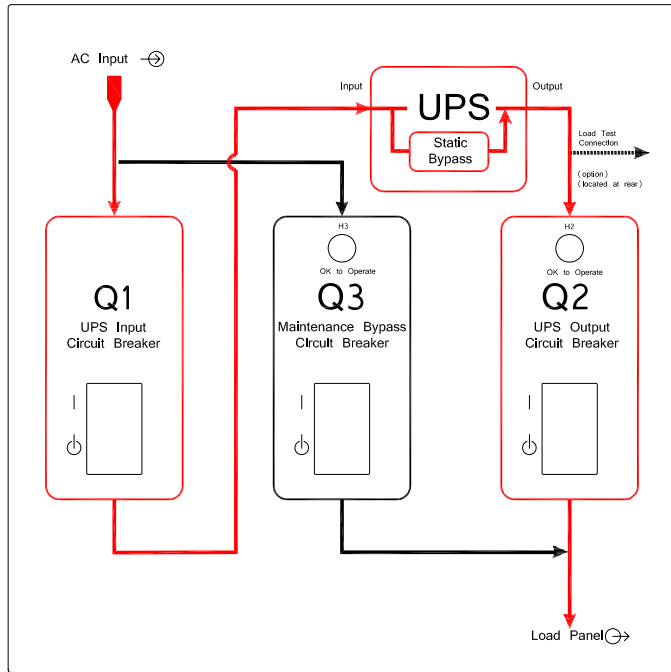
DRAWN BY: JAYAPRAKASH 03-MAR-12

ENGINEER: J.RING/F.DIOSA 19-MAR-12

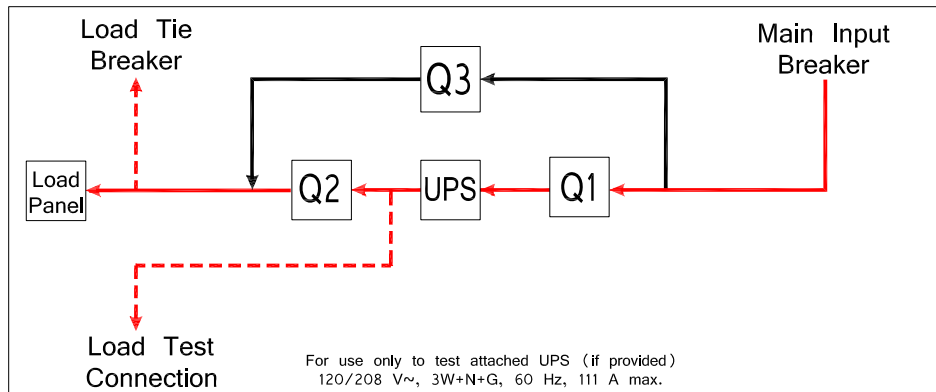
PROJECT: DRAWINGS SHEET 8 OF 13

APPROVED BY: R.HANSEN/E.SILVA 19-MAR-12

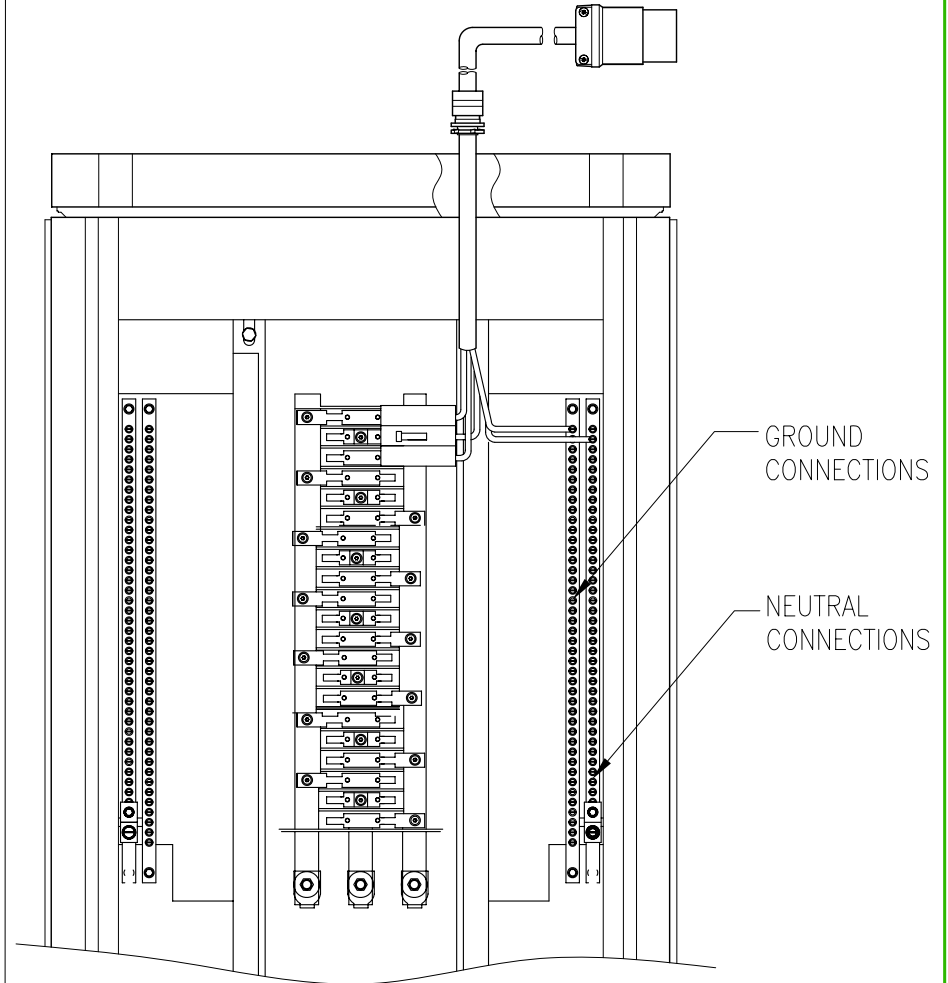
THIRD ANGLE PROJECTION



MIMIC DIAGRAM



UPS LOAD TESTING DIAGRAM



TYPICAL BREAKER CONNECTION
(ENLARGED VIEW)

NOTES:

1. INSTALLATION SHALL COMPLY WITH ALL APPLICABLE NATIONAL, STATE AND LOCAL CODES.
2. PLEASE REFER TO PRODUCT MANUALS FOR ADDITIONAL DETAILS PRIOR TO INSTALLATION AND SITE PREPARATION WORK.

THIS DRAWING AND SPECIFICATIONS HEREIN ARE THE PROPERTY OF SCHNEIDER ELECTRIC AND SHALL NOT BE COPIED, REPRODUCED OR USED IN WHOLE OR IN PART, AS THE BASIS FOR THE MANUFACTURE OR SALE OF ITEMS WITHOUT WRITTEN PERMISSION FROM SCHNEIDER ELECTRIC. THIS DRAWING IS BASED UPON LATEST AVAILABLE INFORMATION AND IS SUBJECT TO CHANGE WITHOUT NOTICE.



TITLE: CONFIGURABLE POWER DISTRIBUTION
 InfraStruxure PDU 40kW TRANSFORMERLESS W/ MBP
 Input: 208V, 3PH, 60Hz
 Output: 208V, 3PH, 60Hz
 MIMIC DIAGRAM & TYPICAL BREAKER CONNECTION
 PROJECT: DRAWINGS SHEET 9 OF 13

DWG NO: PDRPPNX10-M
 DRAWN BY: JAYAPRAKASH
 ENGINEER: J.RING/F.DIOSA
 APPROVED BY: R.HANSEN/E.SILVA
 03-MAR-12
 19-MAR-12
 19-MAR-12

REV: 0
 THIRD ANGLE PROJECTION

WIRE HARNESS FROM THE PDU INTELLIGENCE MODULE

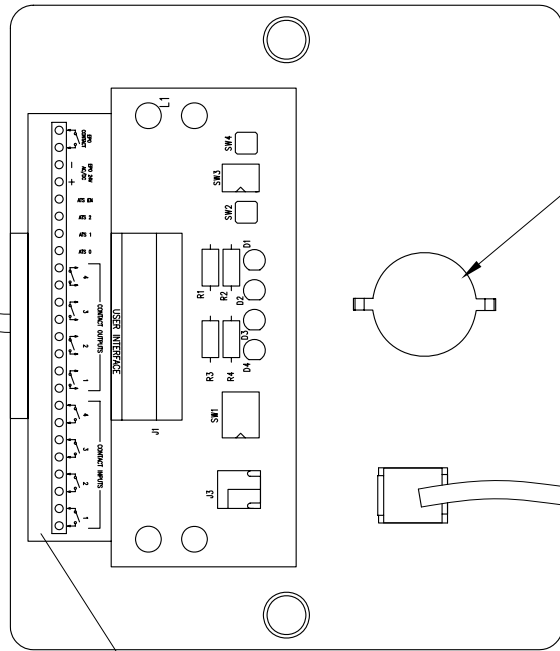
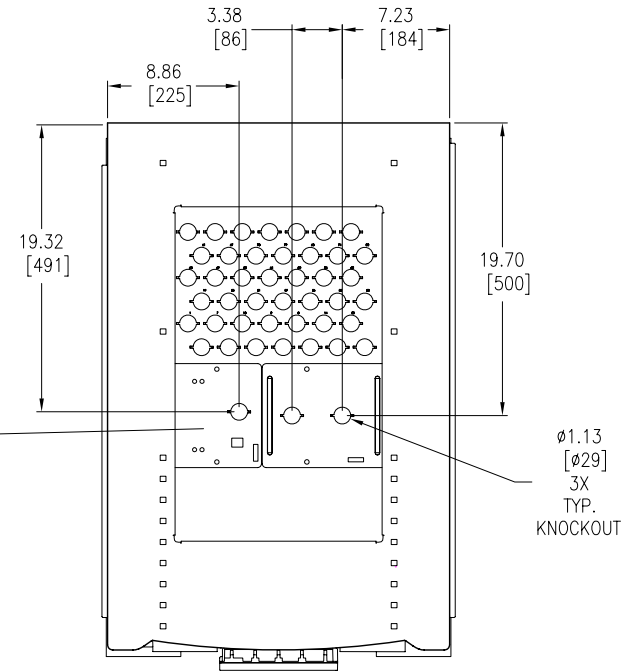


PLATE USER INTERFACE PCBMTG. BOTTOM VIEW

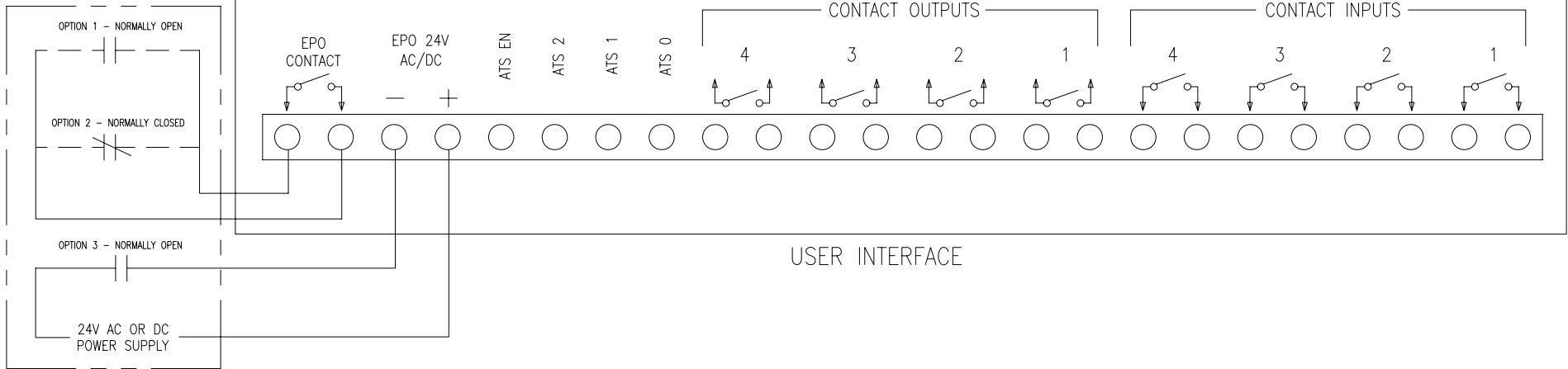
USER EPO CABLE ACCESS

ETHERNET CABLE FROM PDU INTELLIGENCE MODULE



FRONT PDU, TOP VIEW (COVER, DOORS AND CABLE RUN REMOVED)

EPO - EXTERNAL SET OF DRY CONTACTS OR AC/DC POWER SUPPLY



USER INTERFACE

NOTES:

1. INSTALLATION SHALL COMPLY WITH ALL APPLICABLE NATIONAL, STATE AND LOCAL CODES.
2. PLEASE REFER TO PRODUCT MANUALS FOR ADDITIONAL DETAILS PRIOR TO INSTALLATION AND SITE PREPARATION WORK.

THIS DRAWING AND SPECIFICATIONS HEREIN ARE THE PROPERTY OF SCHNEIDER ELECTRIC AND SHALL NOT BE COPIED, REPRODUCED OR USED IN WHOLE OR IN PART, AS THE BASIS FOR THE MANUFACTURE OR SALE OF ITEMS WITHOUT WRITTEN PERMISSION FROM SCHNEIDER ELECTRIC. THIS DRAWING IS BASED UPON LATEST AVAILABLE INFORMATION AND IS SUBJECT TO CHANGE WITHOUT NOTICE.



TITLE: CONFIGURABLE POWER DISTRIBUTION
 InfraStructure PDU 40kW TRANSFORMERLESS W/ MBP
 Input: 208V, 3PH, 60Hz
 Output: 208V, 3PH, 60Hz
 EPO INTERFACE

DWG NO: PDRPPNX10-M REV. 0

DRAWN BY: JAYAPRAKASH 03-MAR-12

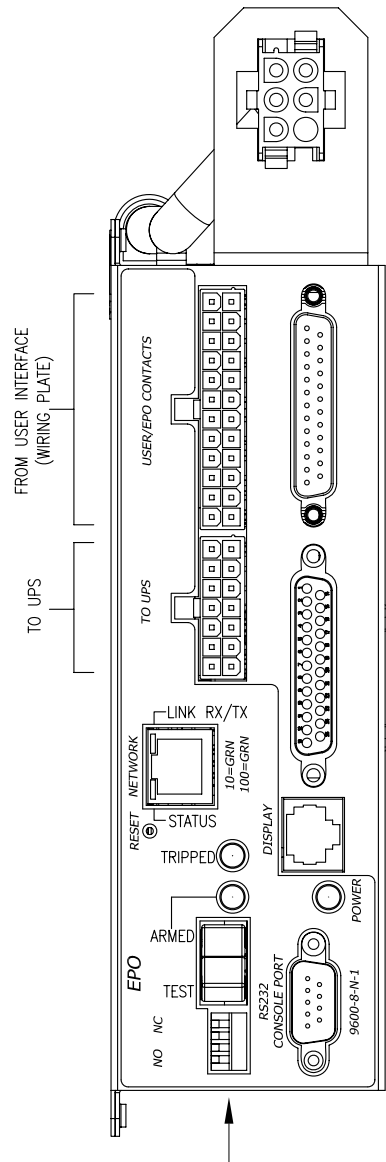
ENGINEER: J.RING/F.DIOSA 19-MAR-12

PROJECT: DRAWINGS SHEET 10 OF 13

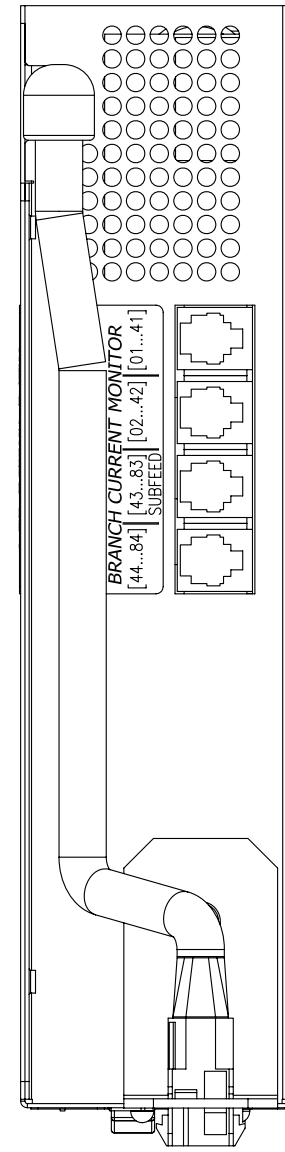
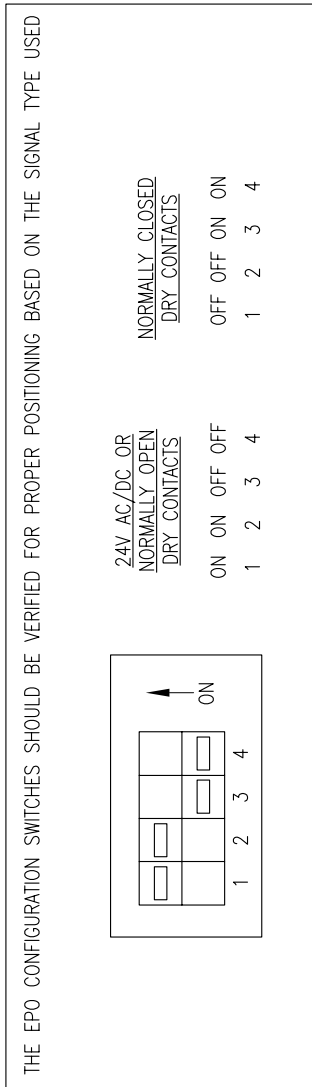
APPROVED BY: R.HANSEN/E.SILVA 19-MAR-12

THIRD ANGLE PROJECTION

PDU INTELLIGENCE MODULE



FRONT VIEW



TOP VIEW

CONNECTORS ARE PREWIRED IF PDU IS PURCHASED WITH BRANCH CURRENT MONITORING SYSTEM

- NOTES:**
1. INSTALLATION SHALL COMPLY WITH ALL APPLICABLE NATIONAL, STATE AND LOCAL CODES.
 2. PLEASE REFER TO PRODUCT MANUALS FOR ADDITIONAL DETAILS PRIOR TO INSTALLATION AND SITE PREPARATION WORK.

THIS DRAWING AND SPECIFICATIONS HEREIN ARE THE PROPERTY OF SCHNEIDER ELECTRIC AND SHALL NOT BE COPIED, REPRODUCED OR USED IN WHOLE OR IN PART, AS THE BASIS FOR THE MANUFACTURE OR SALE OF ITEMS WITHOUT WRITTEN PERMISSION FROM SCHNEIDER ELECTRIC. THIS DRAWING IS BASED UPON LATEST AVAILABLE INFORMATION AND IS SUBJECT TO CHANGE WITHOUT NOTICE.



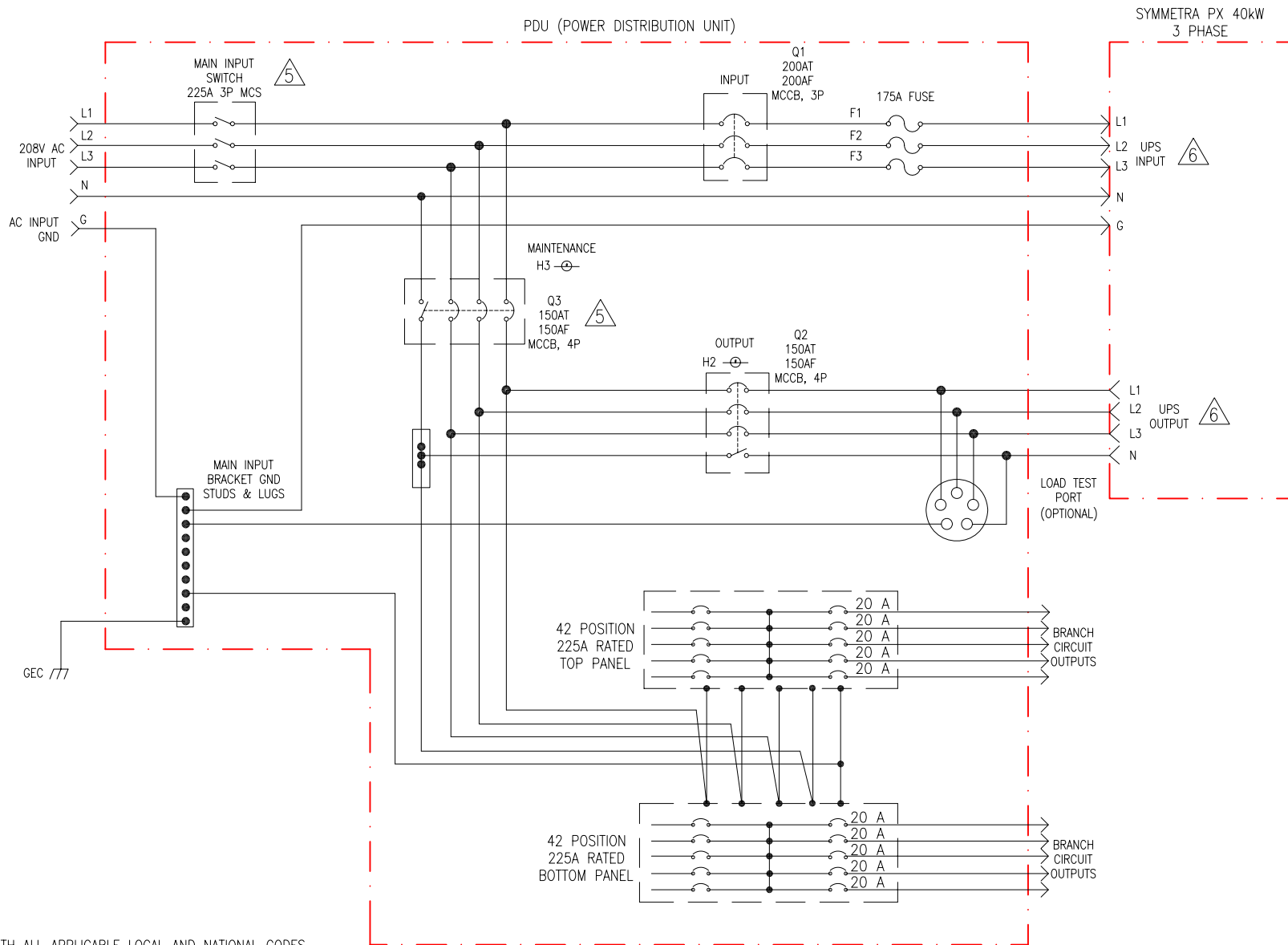
TITLE: CONFIGURABLE POWER DISTRIBUTION
 InfraStruxure PDU 40kW TRANSFORMERLESS W/ MBP
 Input: 208V, 3PH, 60Hz
 Output: 208V, 3PH, 60Hz
 INTELLIGENCE MODULE

PROJECT: DRAWINGS | **SHEET:** 110F13

DWG NO: PDRPPNX10-M

DRAWN BY: JAYAPRAKASH	03-MAR-12
ENGINEER: J.RING/F.DIOSA	19-MAR-12
APPROVED BY: R.HANSEN/E.SILVA	19-MAR-12

REV: 0
THIRD ANGLE PROJECTION



NOTES:

1. INSTALLATION SHALL COMPLY WITH ALL APPLICABLE LOCAL AND NATIONAL CODES.
2. PLEASE REFER TO PRODUCT MANUALS FOR ADDITIONAL DETAILS PRIOR TO INSTALLATION AND SITE PREPARATION WORK.
3. RACK FRAME AND SKINS ARE ELECTRICALLY CONNECTED AND TIED TO CHASSIS GROUND.
4. TRANSFORMER BASE IS GROUNDED THROUGH FRAME.
- △ 5. SHUNT TRIP ON EPO SIGNAL
- △ 6. FOR INPUT/OUTPUT CURRENT VALUES PLEASE SEE SYSTEM ONE LINE DIAGRAM FOR CHOSEN CAPACITY.

THIS DRAWING AND SPECIFICATIONS HEREIN ARE THE PROPERTY OF SCHNEIDER ELECTRIC AND SHALL NOT BE COPIED, REPRODUCED OR USED IN WHOLE OR IN PART, AS THE BASIS FOR THE MANUFACTURE OR SALE OF ITEMS WITHOUT WRITTEN PERMISSION FROM SCHNEIDER ELECTRIC. THIS DRAWING IS BASED UPON LATEST AVAILABLE INFORMATION AND IS SUBJECT TO CHANGE WITHOUT NOTICE.



TITLE: CONFIGURABLE POWER DISTRIBUTION
 InfraStruxure PDU 40kW TRANSFORMERLESS W/ MBP
 Input: 208V, 3PH, 60Hz
 Output: 208V, 3PH, 60Hz
 FIVE LINE DIAGRAM

DWG NO: PDRPPNX10-M 0

DRAWN BY: JAYAPRAKASH 03-MAR-12

ENGINEER: J.RING 19-MAR-12

PROJECT: DRAWINGS SHEET 12 OF 13

APPROVED BY: B.SHERIDAN/E.SILVA 19-MAR-12

REV: 0
THIRD ANGLE PROJECTION

LEGEND:

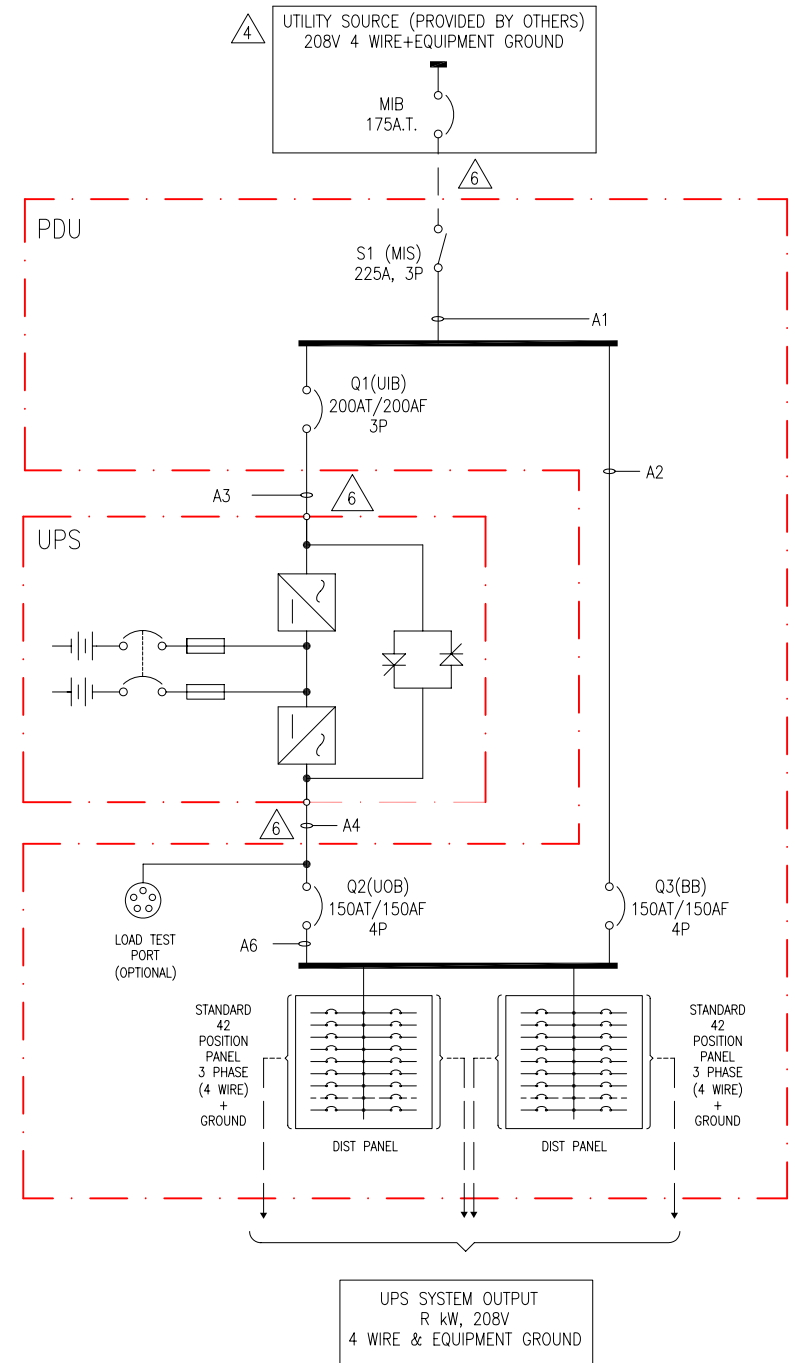
----- AC CABLE - PROVIDED BY OTHERS.

———— AC BUS

NOTES:

1. INSTALLATION SHALL COMPLY WITH ALL APPLICABLE LOCAL AND NATIONAL CODES.
2. PLEASE REFER TO PRODUCT MANUALS FOR ADDITIONAL DETAILS PRIOR TO INSTALLATION AND SITE PREPARATION WORK.
3. DRAWING DEPICTS POWER SYSTEM CONNECTIONS AND IS NOT REPRESENTATIVE OF PHYSICAL LAYOUT, PLEASE REFER TO MECHANICAL DRAWINGS FOR PHYSICAL LAYOUT.
- △ 4. AC SOURCE TO BE 208VAC 3PH 4 WIRE + EQUIPMENT GROUND (PROVIDED BY OTHERS).
5. INPUT OVERCURRENT PROTECTION AND WIRING MUST BE INSTALLED FOR A FULLY RATED 40kW SYMMETRA 3 PHASE. INPUT OVERCURRENT PROTECTION IS BASED ON 80% RATING. ANY DEVIATION PLEASE CONTACT SCHNEIDER ELECTRIC.
- △ 6. AC POWER CABLING TO BE 4 WIRE + EQUIPMENT GROUND AT 208VAC 3 PHASE.
7. PLEASE REFER TO THE BELOW TABLE FOR UPS SYSTEM OUTPUT, CONFIGURARION & CURRENT DETAILS.

R UPS System Output Rating	Configuration	A1 System Input current	A2 Bypass Current	A3 UPS Input current	A4 UPS Output current	A5 System Output current
10	N	34A	28A	34A	28A	28A
	N+1	37A	28A	37A	28A	28A
20	N	67A	56A	67A	56A	56A
	N+1	70A	56A	70A	56A	56A
30	N	101A	83A	101A	83A	83A
	N+1	104A	83A	104A	83A	83A
40	N	134A	111A	134A	111A	111A
	N+1	137A	111A	137A </td <td>111A</td> <td>111A</td>	111A	111A



THIS DRAWING AND SPECIFICATIONS HEREIN ARE THE PROPERTY OF SCHNEIDER ELECTRIC AND SHALL NOT BE COPIED, REPRODUCED OR USED IN WHOLE OR IN PART, AS THE BASIS FOR THE MANUFACTURE OR SALE OF ITEMS WITHOUT WRITTEN PERMISSION FROM SCHNEIDER ELECTRIC. THIS DRAWING IS BASED UPON LATEST AVAILABLE INFORMATION AND IS SUBJECT TO CHANGE WITHOUT NOTICE.



TITLE: CONFIGURABLE POWER DISTRIBUTION
 InfraStruxure PDU 40kW TRANSFORMERLESS W/ MBP
 Input: 208V, 3PH, 60Hz
 Output: 208V, 3PH, 60Hz
 SYSTEM ONLE LINE DIAGRAM

DWG NO: PDRPPNX10-M 0

DRAWN BY: JAYAPRAKASH 03-MAR-12

ENGINEER: J.RING/A.WARNER 19-MAR-12

PROJECT: DRAWINGS SHEET 13 OF 13

APPROVED BY: B.SHERIDAN/F.DIOSA 19-MAR-12

REV. 0
 THIRD ANGLE PROJECTION