


# CONFIGURABLE POWER DISTRIBUTION, InfraStruxure PDU 60kW 208V/208V Transformerless

Sheet No.	Component /Detail	Description
1	Draw ing Guide	InfraStruxure PDU 60kW 208V/208V Transformerless
2	Specification	InfraStruxure PDU 60kW 208V/208V Transformerless
3-6	Mechanical Layouts	InfraStruxure PDU 60kW 208V/208V Transformerless
7-11	Internal View s & Details	InfraStruxure PDU 60kW 208V/208V Transformerless
12-13	System One Line /Five line Diagram	InfraStruxure PDU 60kW 208V/208V Transformerless

LEGEND	
SYMBOL	DESCRIPTION
	CIRCUIT BREAKER
	SWITCH

THIS DRAWING AND SPECIFICATIONS HEREIN ARE THE PROPERTY OF SCHNEIDER ELECTRIC AND SHALL NOT BE COPIED, REPRODUCED OR USED IN WHOLE OR IN PART, AS THE BASIS FOR THE MANUFACTURE OR SALE OF ITEMS WITHOUT WRITTEN PERMISSION FROM SCHNEIDER ELECTRIC. THIS DRAWING IS BASED UPON LATEST AVAILABLE INFORMATION AND IS SUBJECT TO CHANGE WITHOUT NOTICE.



TITLE: CONFIGURABLE POWER DISTRIBUTION  
 InfraStruxure PDU 60kW TRANSFORMERLESS  
 Input: 208V, 3PH, 60Hz  
 Output: 208V, 3PH, 60Hz  
 DRAWING GUIDE

DWG NO: PDRPPNX10 REV. 0

DRAWN BY: JAYAPRAKASH 01-MAR-12 ANGLE

ENGINEER: J.RING/F.DIOSA 19-MAR-12 PROJECTION

PROJECT: DRAWINGS SHEET 1 OF 13

APPROVED BY: R.HANSEN/E.SILVA 19-MAR-12 N/A

# CONFIGURABLE POWER DISTRIBUTION - SPECIFICATIONS

## 1. AC Input

- 1.1 Nominal voltage : 208V 3PH WYE, 4W+G (provided by others)
- 1.2 Frequency : 60Hz
- 1.3 Input Circuit Breaker : 225A
- 1.4 Nominal current : 180A
- 1.5 Main Input conductor size : 4/0 AWG

## 2. AC Output

- 2.1 Nominal voltage : 208V 3PH 4W+G
- 2.2 Nominal current : 180A
- 2.3 Full Load rating : 64.8kW
- 2.4 Distribution Panel : 2 x 225A, 42-position
- 2.5 Distribution Breaker Size : 150A (Max)

## 3. ENVIRONMENTS

- 3.1 The assembly is made for an ambient temperature for operation of : 0°C to 40°C.
- 3.2 The assembly is made for an ambient temperature for storage of : 0°C to 45°C.

## 4. ENCLOSURE

- 4.1 The assembly material is steel with surface coating.
- 4.2 The assembly is made for Indoor floor Installation.

## 5. CONNECTIONS

- 5.1 Incoming and outgoing cables to be connected to terminals in component section.
- 5.2 Input cable entry is through side, top or bottom of the unit.

### NOTES:

1. INSTALLATION SHALL COMPLY WITH ALL APPLICABLE NATIONAL, STATE AND LOCAL CODES.
2. PLEASE REFER TO PRODUCT MANUALS PRIOR TO INSTALLATION AND SITE PREPARATION WORK FOR FURTHER DETAILS .

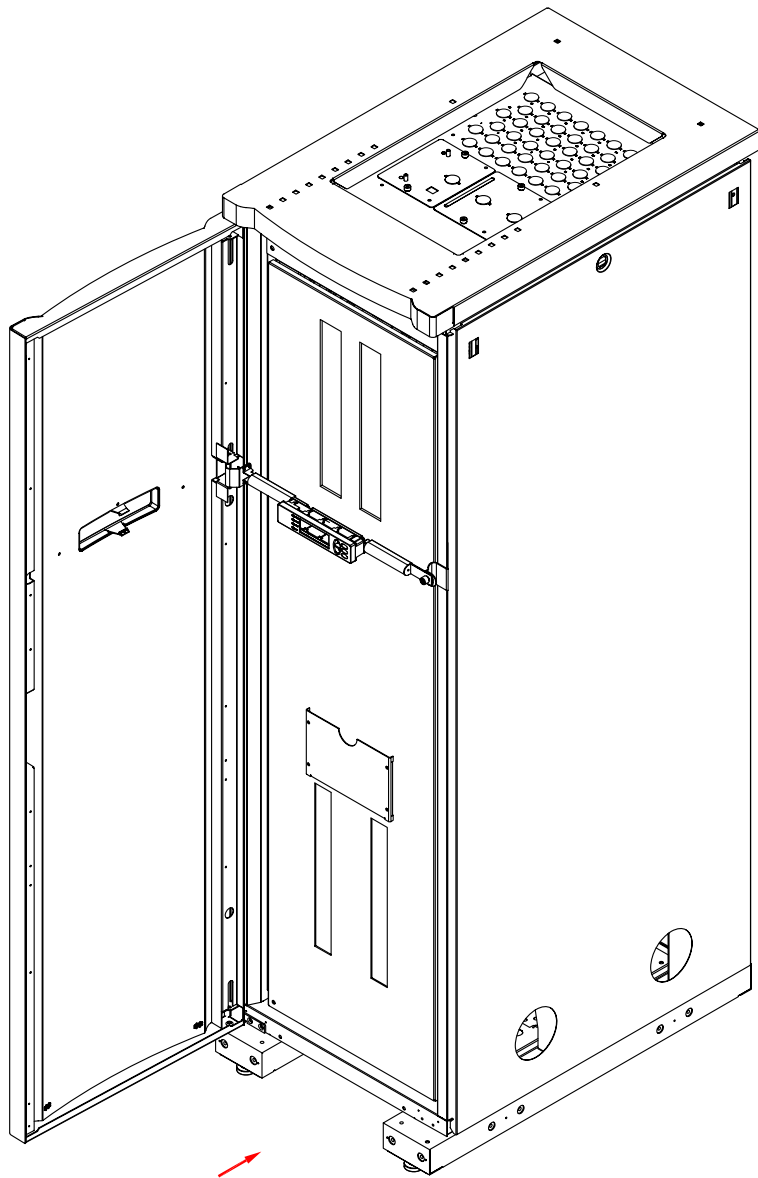
THIS DRAWING AND SPECIFICATIONS HEREIN ARE THE PROPERTY OF SCHNEIDER ELECTRIC AND SHALL NOT BE COPIED, REPRODUCED OR USED IN WHOLE OR IN PART, AS THE BASIS FOR THE MANUFACTURE OR SALE OF ITEMS WITHOUT WRITTEN PERMISSION FROM SCHNEIDER ELECTRIC. THIS DRAWING IS BASED UPON LATEST AVAILABLE INFORMATION AND IS SUBJECT TO CHANGE WITHOUT NOTICE.



TITLE: CONFIGURABLE POWER DISTRIBUTION  
InfraStruxure PDU 60kW TRANSFORMERLESS  
Input: 208V, 3PH, 60Hz  
Output: 208V, 3PH, 60Hz  
SPECIFICATIONS

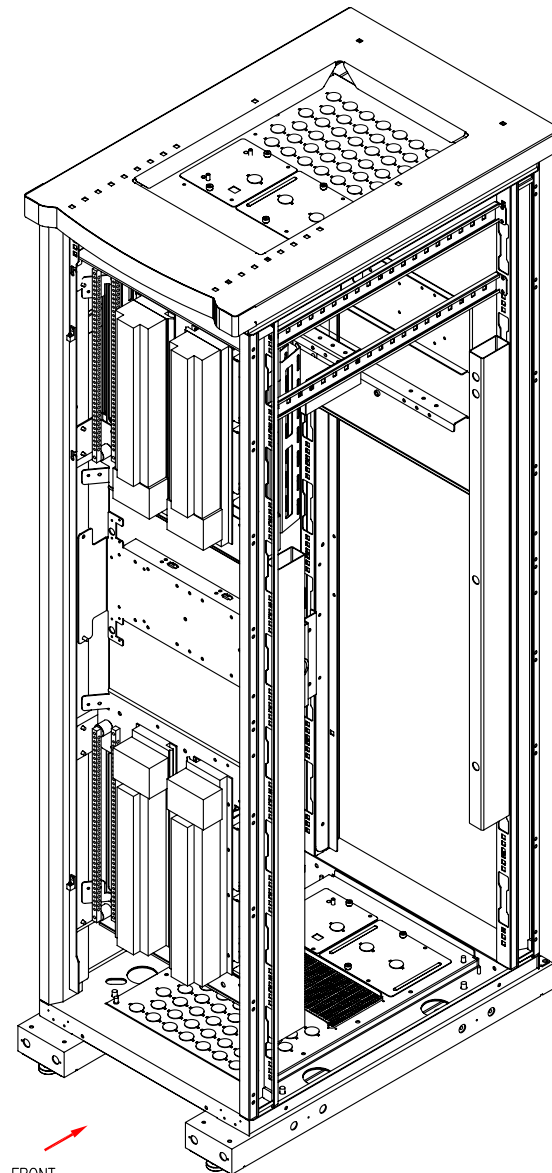
DWG NO:	PDRPPNX10		REV.	0
DRAWN BY:	JAYAPRAKASH	01-MAR-12	ANGLE	
ENGINEER:	J.RING/F.DIOSA	19-MAR-12	PROJECTION	
APPROVED BY:	R.HANSEN/E.SILVA	19-MAR-12	N/A	

PROJECT: DRAWINGS SHEET 2 OF 13



FRONT

ISOMETRIC VIEW



FRONT

ISOMETRIC VIEW  
(INSIDE PANELS REMOVED)

NOTES:

1. INSTALLATION SHALL COMPLY WITH ALL APPLICABLE NATIONAL, STATE AND LOCAL CODES.
2. PLEASE REFER TO PRODUCT MANUALS PRIOR TO INSTALLATION AND SITE PREPARATION WORK FOR FURTHER DETAILS.

THIS DRAWING AND SPECIFICATIONS HEREIN ARE THE PROPERTY OF SCHNEIDER ELECTRIC AND SHALL NOT BE COPIED, REPRODUCED OR USED IN WHOLE OR IN PART, AS THE BASIS FOR THE MANUFACTURE OR SALE OF ITEMS WITHOUT WRITTEN PERMISSION FROM SCHNEIDER ELECTRIC. THIS DRAWING IS BASED UPON LATEST AVAILABLE INFORMATION AND IS SUBJECT TO CHANGE WITHOUT NOTICE.



TITLE: CONFIGURABLE POWER DISTRIBUTION  
 InfraStruxure PDU 60kW TRANSFORMERLESS  
 Input: 208V, 3PH, 60Hz  
 Output: 208V, 3PH, 60Hz  
 DIMETRIC VIEW

DWG NO: PDRPPNX10

REV. 0

DRAWN BY: JAYAPRAKASH 01-MAR-12

ANGLE

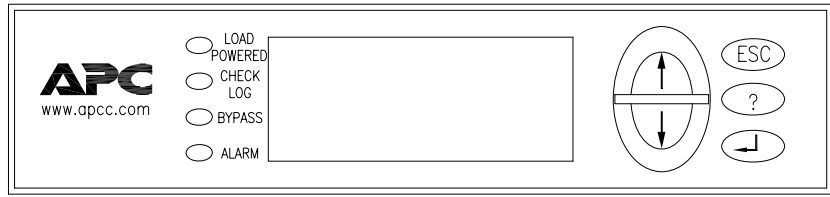
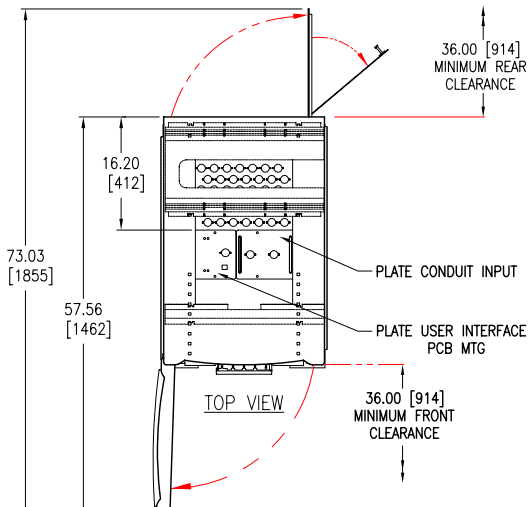
ENGINEER: J.RING/F.DIOSA 19-MAR-12

PROJECTION

PROJECT: DRAWINGS SHEET 3 OF 13

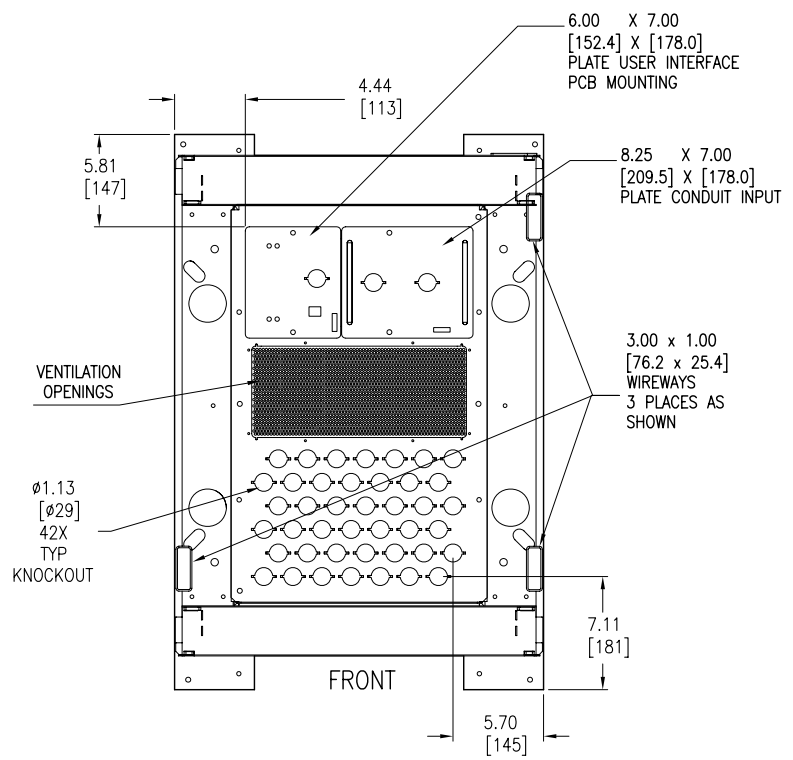
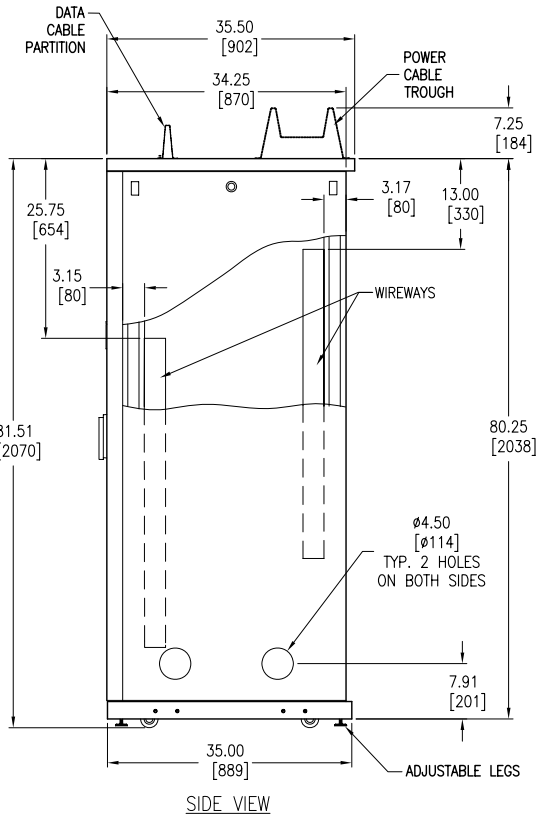
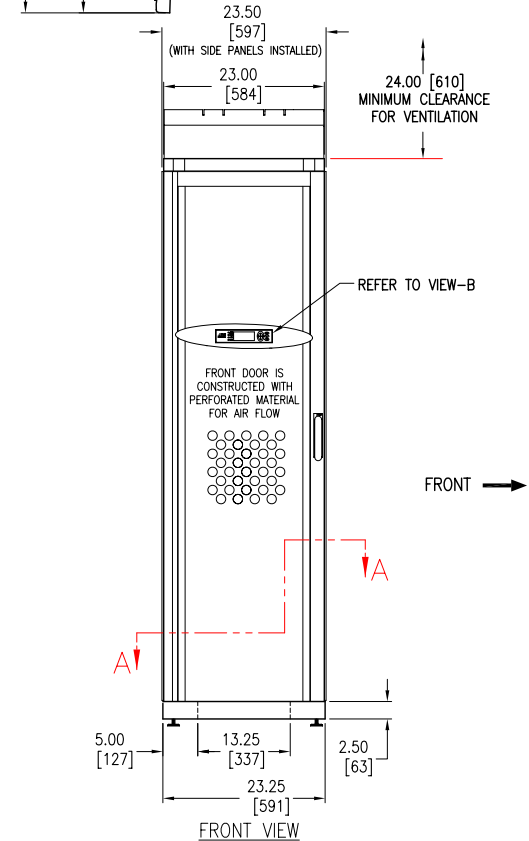
APPROVED BY: R.HANSEN/E.SILVA 19-MAR-12

N/A



DETAIL-B (ENLARGED)  
CONTROL PANEL

- NOTES:
1. INSTALLATION SHALL COMPLY WITH ALL APPLICABLE NATIONAL, STATE AND LOCAL CODES.
  2. PLEASE REFER TO PRODUCT MANUALS PRIOR TO INSTALLATION AND SITE PREPARATION WORK FOR FURTHER DETAILS.
  3. ALL DIMENSIONS ARE IN INCHES [MILLIMETERS], UNLESS OTHERWISE SPECIFIED.
  4. CABLE ENTRY IS FROM TOP OR BOTTOM OF THE UNIT.
  5. FRONT AND REAR SERVICE ACCESS IS REQUIRED FOR SERVICE.
  6. WEIGHT OF THE UNIT IS 418 lb [190 kg].
  7. FLOOR LOADING: 73 lb/ft<sup>2</sup> [355 kg/meter<sup>2</sup>].
  8. OPERATING TEMPERATURE: 32-104°F [0-40°C].
  9. DATA CABLE PARTITION AND POWER CABLE TROUGH ARE NOT PART OF THE SKU.
  10. COLOR: BLACK.



SECTION A-A (ENLARGED VIEW)  
(FRONT & REAR DOOR NOT SHOWN)

THIS DRAWING AND SPECIFICATIONS HEREIN ARE THE PROPERTY OF SCHNEIDER ELECTRIC AND SHALL NOT BE COPIED, REPRODUCED OR USED IN WHOLE OR IN PART, AS THE BASIS FOR THE MANUFACTURE OR SALE OF ITEMS WITHOUT WRITTEN PERMISSION FROM SCHNEIDER ELECTRIC. THIS DRAWING IS BASED UPON LATEST AVAILABLE INFORMATION AND IS SUBJECT TO CHANGE WITHOUT NOTICE.



TITLE: CONFIGURABLE POWER DISTRIBUTION  
InfraStruxure PDU 60kW TRANSFORMERLESS  
Input: 208V, 3PH, 60Hz  
Output: 208V, 3PH, 60Hz  
GENERAL ARRANGEMENT

DWG NO: PDRPPNX10 REV. 0

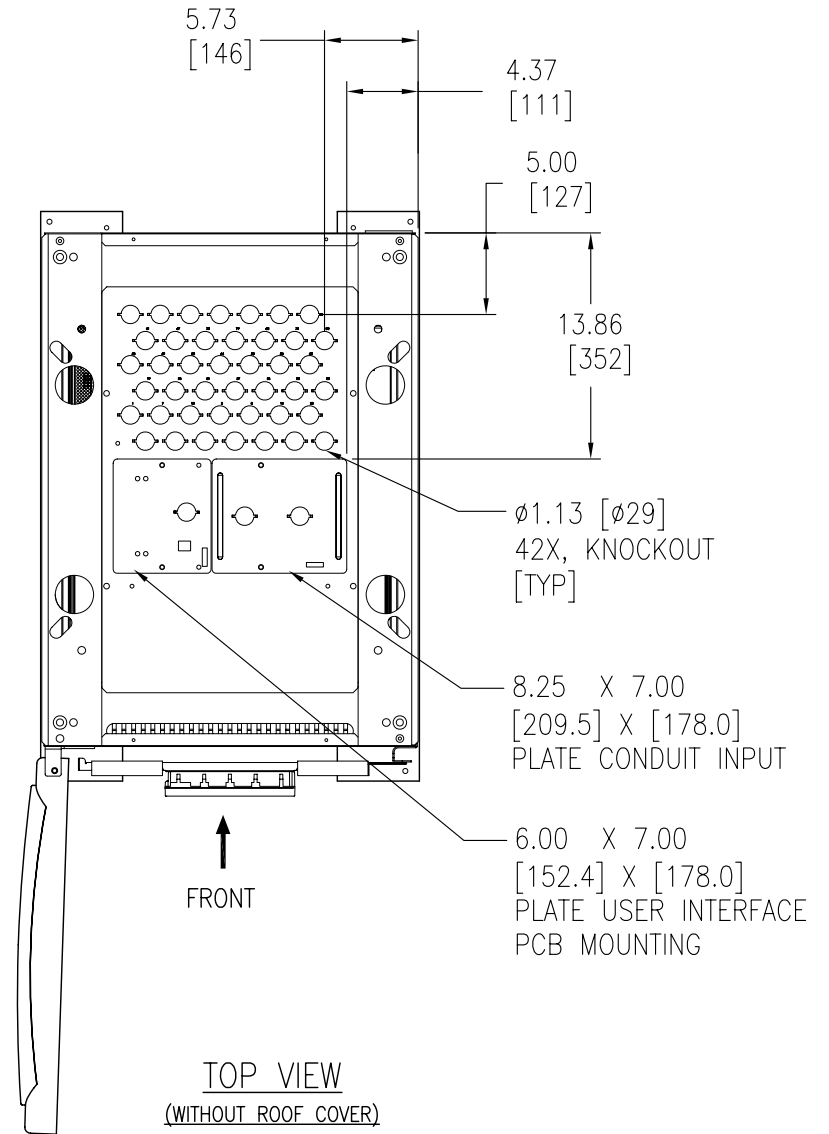
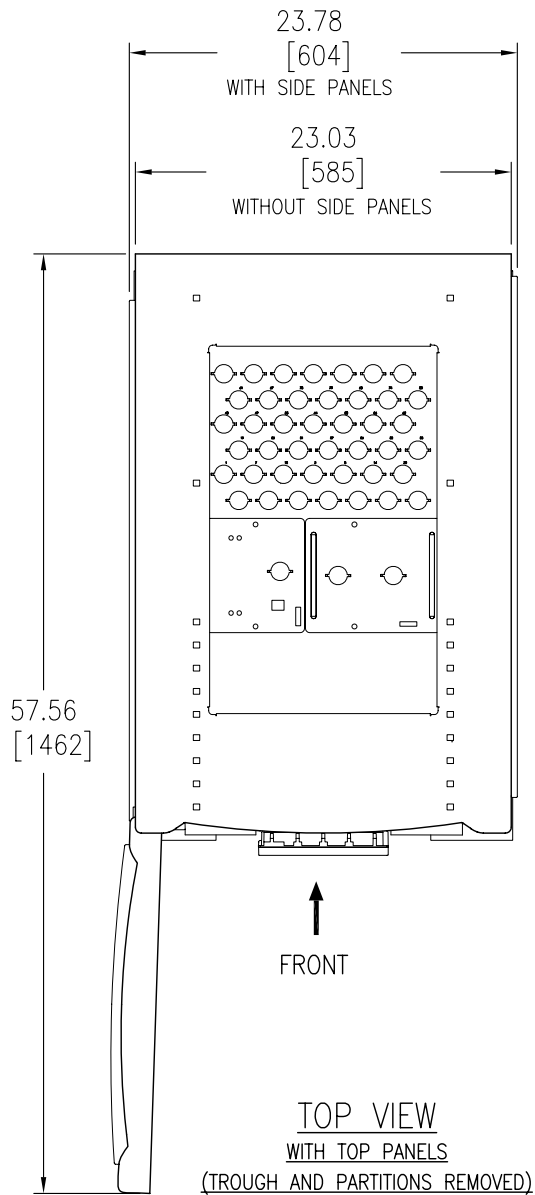
DRAWN BY: JAYAPRAKASH 01-MAR-12

ENGINEER: J.RING/F.DIOSA 19-MAR-12

PROJECT: DRAWINGS SHEET 4 OF 13

APPROVED BY: R.HANSEN/E.SILVA 19-MAR-12

THIRD ANGLE PROJECTION



NOTES:

1. INSTALLATION SHALL COMPLY WITH ALL APPLICABLE NATIONAL, STATE AND LOCAL CODES.
2. PLEASE REFER TO PRODUCT MANUALS PRIOR TO INSTALLATION AND SITE PREPARATION WORK FOR FURTHER DETAILS.
3. ALL DIMENSIONS ARE IN INCHES [MILLIMETERS], UNLESS OTHERWISE SPECIFIED.

THIS DRAWING AND SPECIFICATIONS HEREIN ARE THE PROPERTY OF SCHNEIDER ELECTRIC AND SHALL NOT BE COPIED, REPRODUCED OR USED IN WHOLE OR IN PART, AS THE BASIS FOR THE MANUFACTURE OR SALE OF ITEMS WITHOUT WRITTEN PERMISSION FROM SCHNEIDER ELECTRIC. THIS DRAWING IS BASED UPON LATEST AVAILABLE INFORMATION AND IS SUBJECT TO CHANGE WITHOUT NOTICE.

**Schneider Electric**

TITLE: CONFIGURABLE POWER DISTRIBUTION  
 InfraStruxure PDU 60kW TRANSFORMERLESS  
 Input: 208V, 3PH, 60Hz  
 Output: 208V, 3PH, 60Hz  
 TOP VIEWS

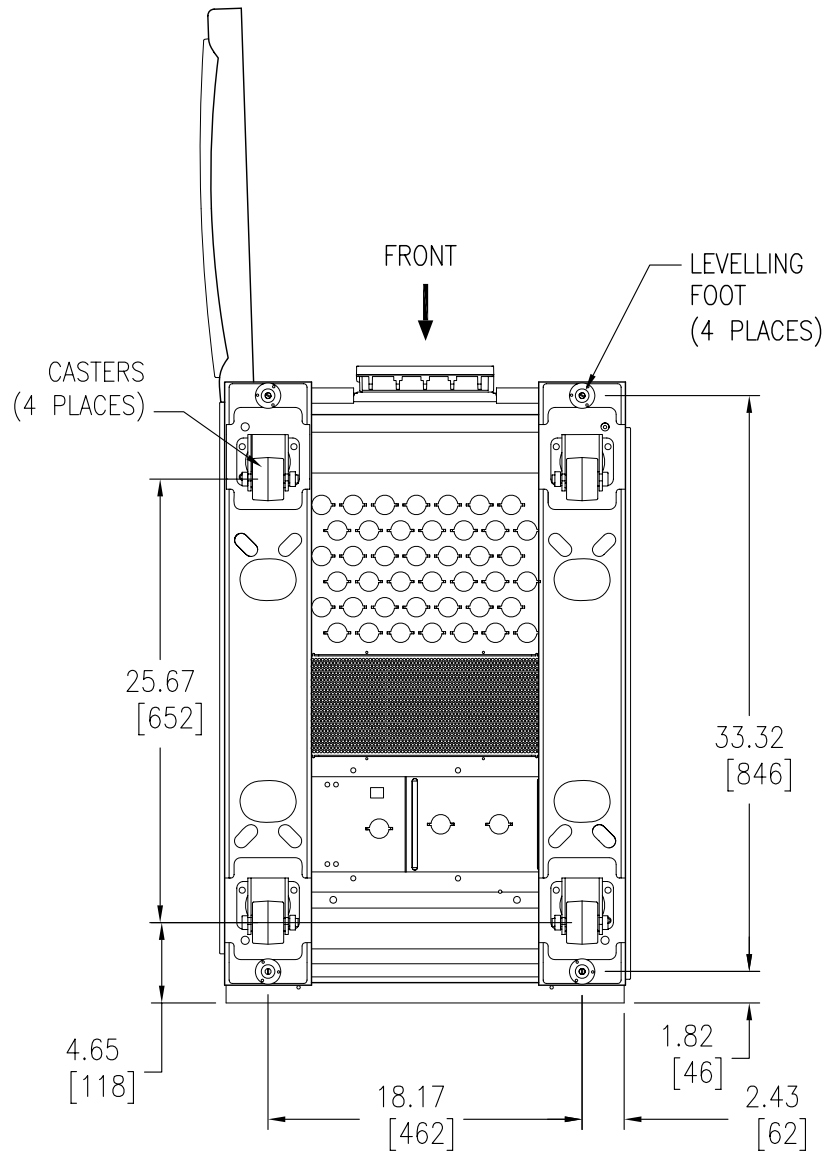
DWG NO: PDRPPNX10 REV. 0

DRAWN BY: JAYAPRAKASH 01-MAR-12 THIRD ANGLE

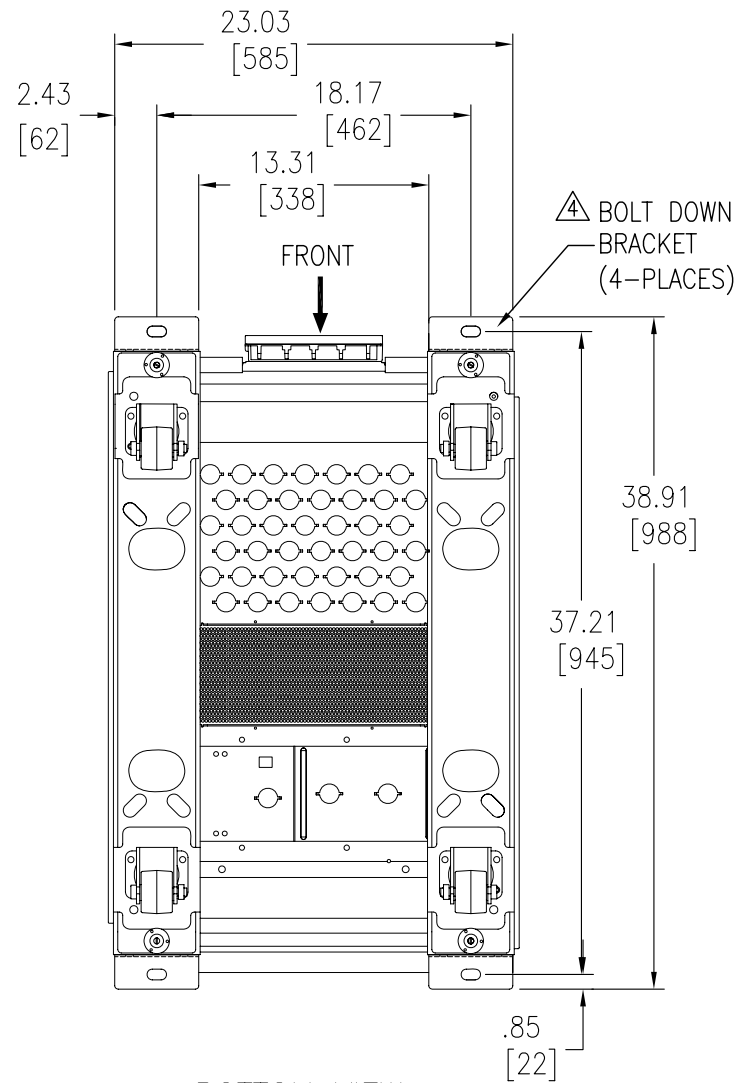
ENGINEER: J.RING/F.DIOSA 19-MAR-12 PROJECTION

PROJECT: DRAWINGS SHEET 5 OF 13

APPROVED BY: R.HANSEN/E.SILVA 19-MAR-12



**BOTTOM VIEW**



**BOTTOM VIEW**  
 FRONT & REAR DOOR NOT SHOWN  
 (ANCHORING DETAILS WITH BOLT DOWN BRACKETS)

**NOTES:**

1. INSTALLATION SHALL COMPLY WITH ALL APPLICABLE NATIONAL, STATE AND LOCAL CODES.
2. PLEASE REFER TO PRODUCT MANUALS PRIOR TO INSTALLATION AND SITE PREPARATION WORK FOR FURTHER DETAILS.
3. ALL DIMENSIONS ARE IN INCHES [MILLIMETERS], UNLESS OTHERWISE SPECIFIED.

△4. TO STABILIZE THE ENCLOSURE (IF IT IS NOT JOINED WITH ANOTHER COMPONENT) USE THE AR8112BLK BOLT-DOWN KIT. ATTACH THE BRACKETS TO THE UNIT AS SHOWN. USE CODE COMPLIANT FASTENERS TO SECURE THE UNIT TO THE FLOOR.

THIS DRAWING AND SPECIFICATIONS HEREIN ARE THE PROPERTY OF SCHNEIDER ELECTRIC AND SHALL NOT BE COPIED, REPRODUCED OR USED IN WHOLE OR IN PART, AS THE BASIS FOR THE MANUFACTURE OR SALE OF ITEMS WITHOUT WRITTEN PERMISSION FROM SCHNEIDER ELECTRIC. THIS DRAWING IS BASED UPON LATEST AVAILABLE INFORMATION AND IS SUBJECT TO CHANGE WITHOUT NOTICE.



TITLE: CONFIGURABLE POWER DISTRIBUTION  
 InfraStruxure PDU 60kW TRANSFORMERLESS  
 Input: 208V, 3PH, 60Hz  
 Output: 208V, 3PH, 60Hz  
 BOTTOM VIEW & ANCHORING DETAILS

DWG NO: PDRPPNX10 REV. 0

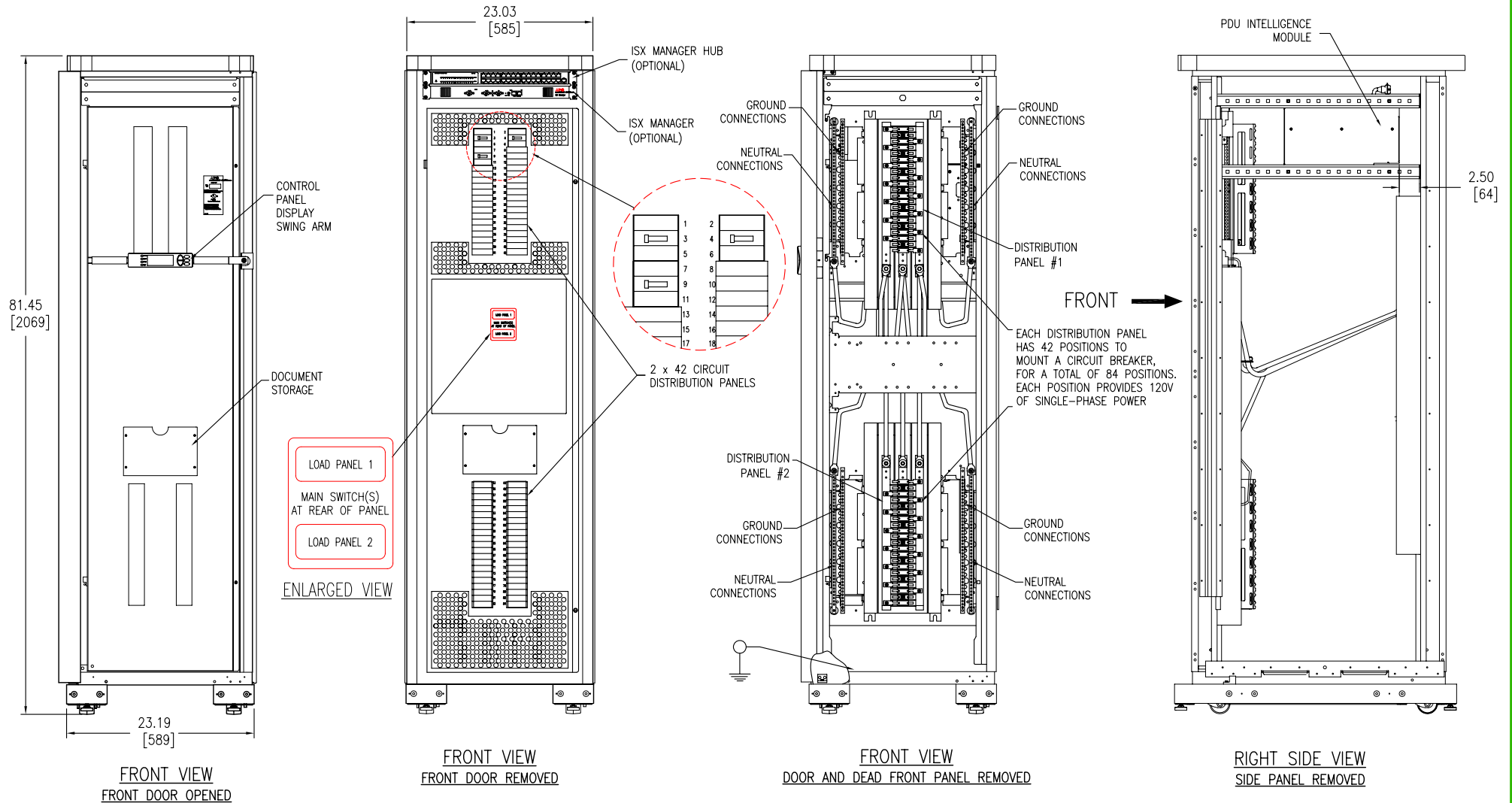
DRAWN BY: JAYAPRAKASH 01-MAR-12

ENGINEER: J.RING/F.DIOSA 19-MAR-12

PROJECT: DRAWINGS SHEET 6 OF 13

APPROVED BY: R.HANSEN/E.SILVA 19-MAR-12

THIRD ANGLE PROJECTION



**NOTES:**

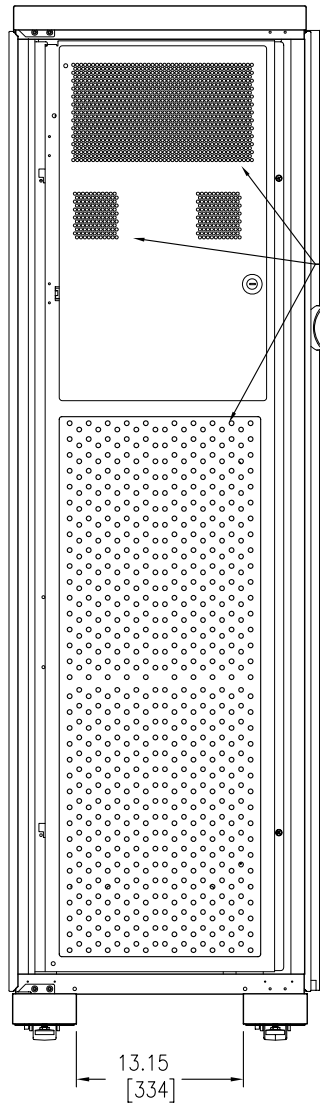
1. INSTALLATION SHALL COMPLY WITH ALL APPLICABLE NATIONAL, STATE AND LOCAL CODES.
2. PLEASE REFER TO PRODUCT MANUALS PRIOR TO INSTALLATION AND SITE PREPARATION WORK FOR FURTHER DETAILS.
3. ALL DIMENSIONS ARE IN INCHES [MILLIMETERS], UNLESS OTHERWISE SPECIFIED.
4. SOME STRUCTURAL DETAILS HAVE BEEN OMITTED FOR THE PURPOSE OF CLARITY.

THIS DRAWING AND SPECIFICATIONS HEREIN ARE THE PROPERTY OF SCHNEIDER ELECTRIC AND SHALL NOT BE COPIED, REPRODUCED OR USED IN WHOLE OR IN PART, AS THE BASIS FOR THE MANUFACTURE OR SALE OF ITEMS WITHOUT WRITTEN PERMISSION FROM SCHNEIDER ELECTRIC. THIS DRAWING IS BASED UPON LATEST AVAILABLE INFORMATION AND IS SUBJECT TO CHANGE WITHOUT NOTICE.



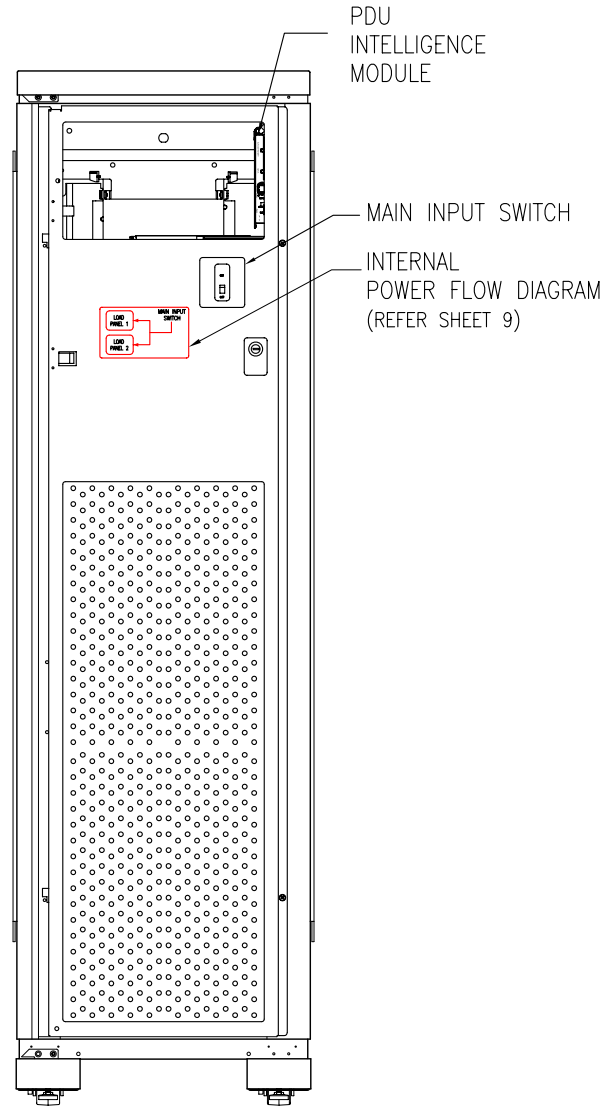
TITLE: CONFIGURABLE POWER DISTRIBUTION  
 InfraStruxure PDU 60kW TRANSFORMERLESS  
 Input: 208V, 3PH, 60Hz  
 Output: 208V, 3PH, 60Hz  
 INTERNAL VIEW

DWG NO:	PDRPPNX10		REV:	0
DRAWN BY:	JAYAPRAKASH	01-MAR-12	THIRD	ANGLE PROJECTION
ENGINEER:	J.RING/F.DIOSA	19-MAR-12	ANGLE	
APPROVED BY:	R.HANSEN/E.SILVA	19-MAR-12	PROJECTION	



PARTS OF UPPER PANEL AND LOWER PANEL ARE CONSTRUCTED WITH PERFORATED MATERIAL FOR AIR FLOW

REAR VIEW  
REAR DOORS REMOVED

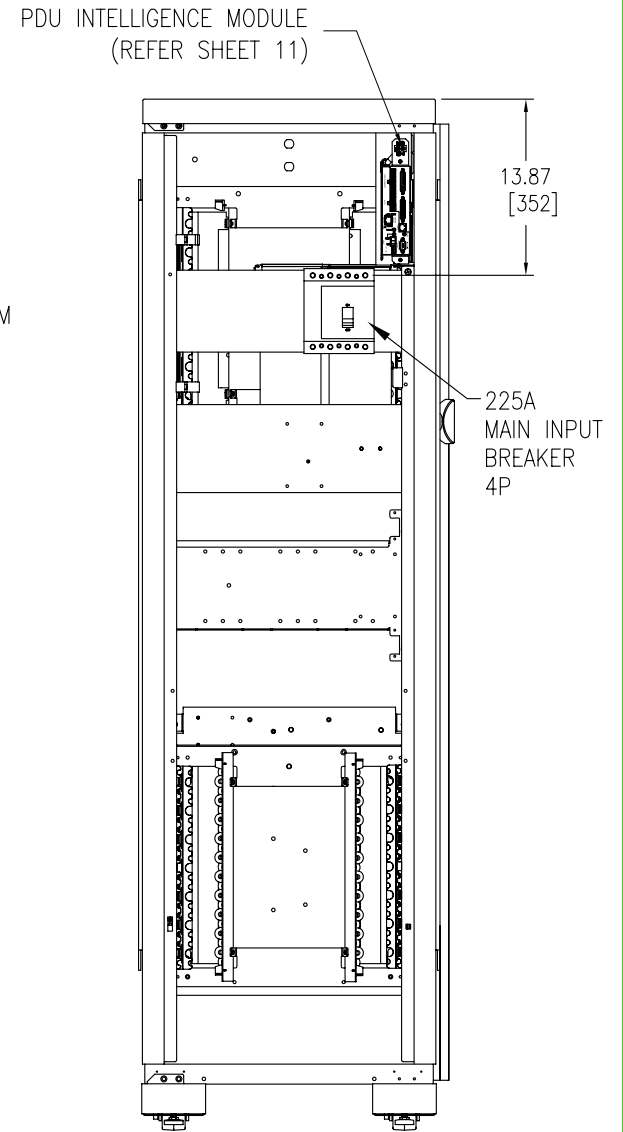


PDU INTELLIGENCE MODULE

MAIN INPUT SWITCH

INTERNAL POWER FLOW DIAGRAM (REFER SHEET 9)

REAR VIEW  
TOP DOOR REMOVED



PDU INTELLIGENCE MODULE (REFER SHEET 11)

13.87 [352]

225A MAIN INPUT BREAKER 4P

REAR VIEW  
PANELS & DOORS REMOVED

**NOTES:**

1. INSTALLATION SHALL COMPLY WITH ALL APPLICABLE NATIONAL, STATE AND LOCAL CODES.
2. PLEASE REFER TO PRODUCT MANUALS PRIOR TO INSTALLATION AND SITE PREPARATION WORK FOR FURTHER DETAILS.
3. ALL DIMENSIONS ARE IN INCHES [MILLIMETERS], UNLESS OTHERWISE SPECIFIED.
4. SOME STRUCTURAL DETAILS HAVE BEEN OMITTED FOR THE PURPOSE OF CLARITY.

THIS DRAWING AND SPECIFICATIONS HEREIN ARE THE PROPERTY OF SCHNEIDER ELECTRIC AND SHALL NOT BE COPIED, REPRODUCED OR USED IN WHOLE OR IN PART, AS THE BASIS FOR THE MANUFACTURE OR SALE OF ITEMS WITHOUT WRITTEN PERMISSION FROM SCHNEIDER ELECTRIC. THIS DRAWING IS BASED UPON LATEST AVAILABLE INFORMATION AND IS SUBJECT TO CHANGE WITHOUT NOTICE.



TITLE: CONFIGURABLE POWER DISTRIBUTION  
InfraStruxure PDU 60kW TRANSFORMERLESS  
Input: 208V, 3PH, 60Hz  
Output: 208V, 3PH, 60Hz  
REAR VIEWS

DWG NO: PDRPPNX10 REV. 0

DRAWN BY: JAYAPRAKASH 01-MAR-12

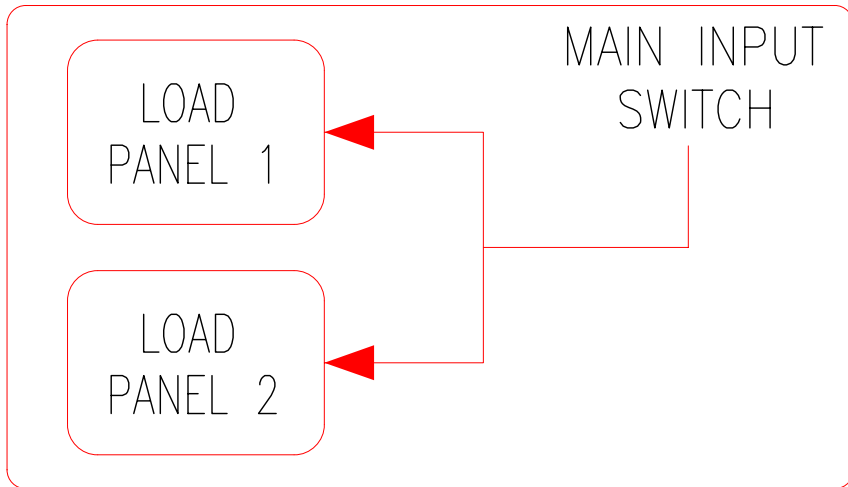
ENGINEER: J.RING/F.DIOSA 19-MAR-12

APPROVED BY: R.HANSEN/E.SILVA 19-MAR-12

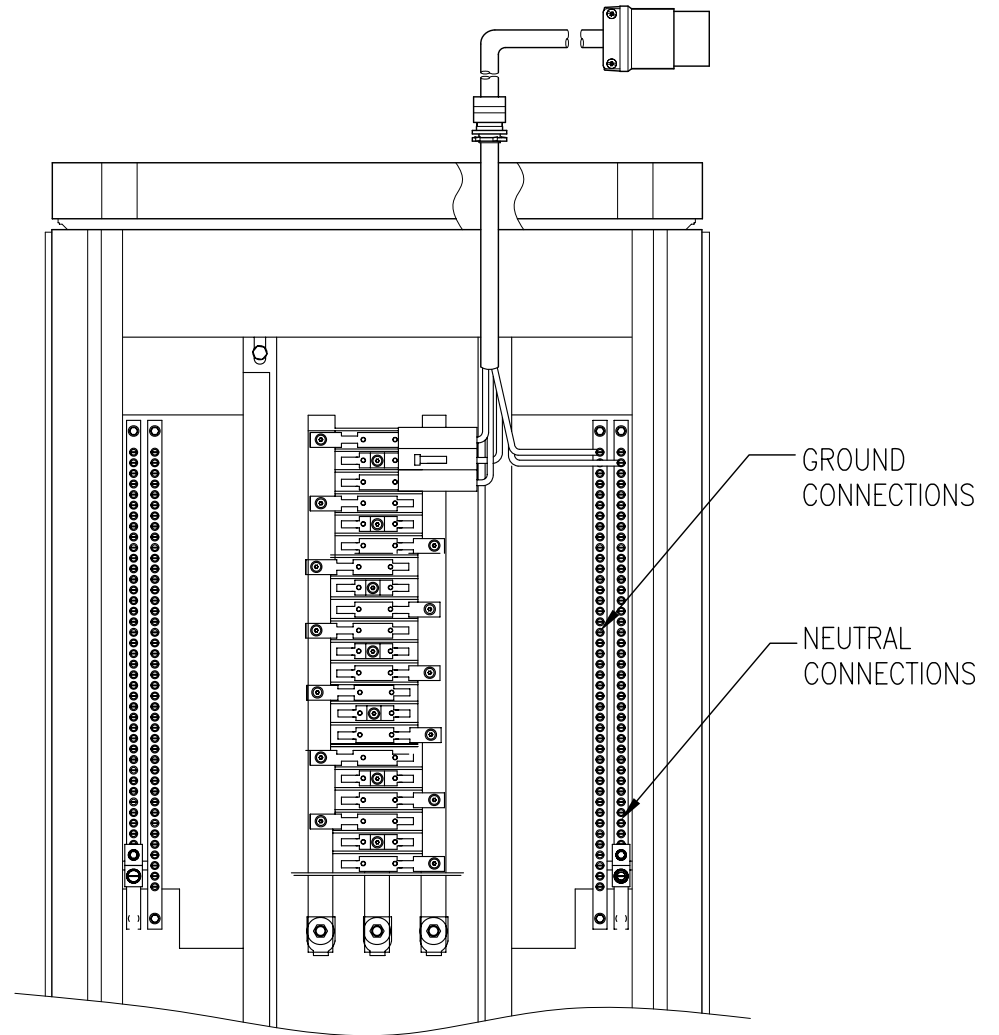
PROJECT: DRAWINGS SHEET 8 OF 13

THIRD ANGLE PROJECTION





INTERNAL POWER FLOW DIAGRAM



TYPICAL BREAKER CONNECTION (ENLARGED VIEW)

NOTES:

1. INSTALLATION SHALL COMPLY WITH ALL APPLICABLE NATIONAL, STATE AND LOCAL CODES.
2. PLEASE REFER TO PRODUCT MANUALS PRIOR TO INSTALLATION AND SITE PREPARATION WORK FOR FURTHER DETAILS.

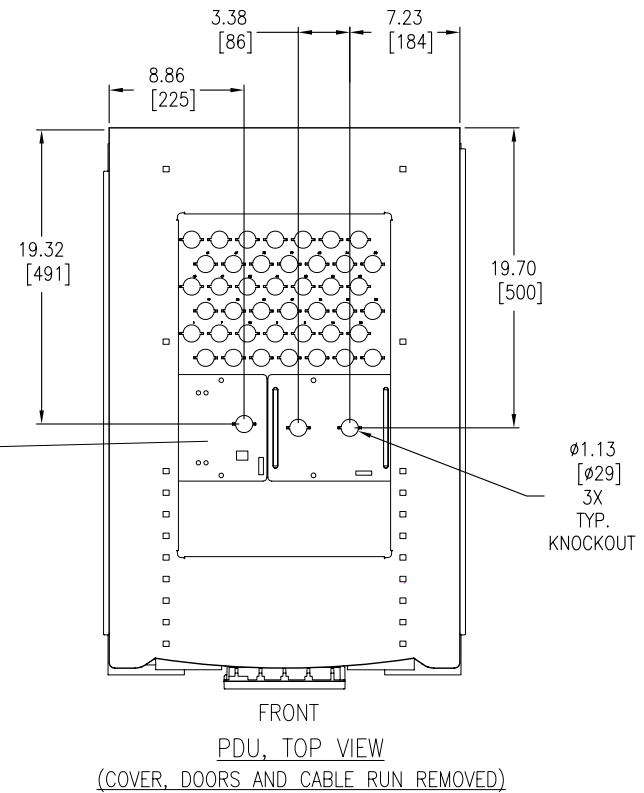
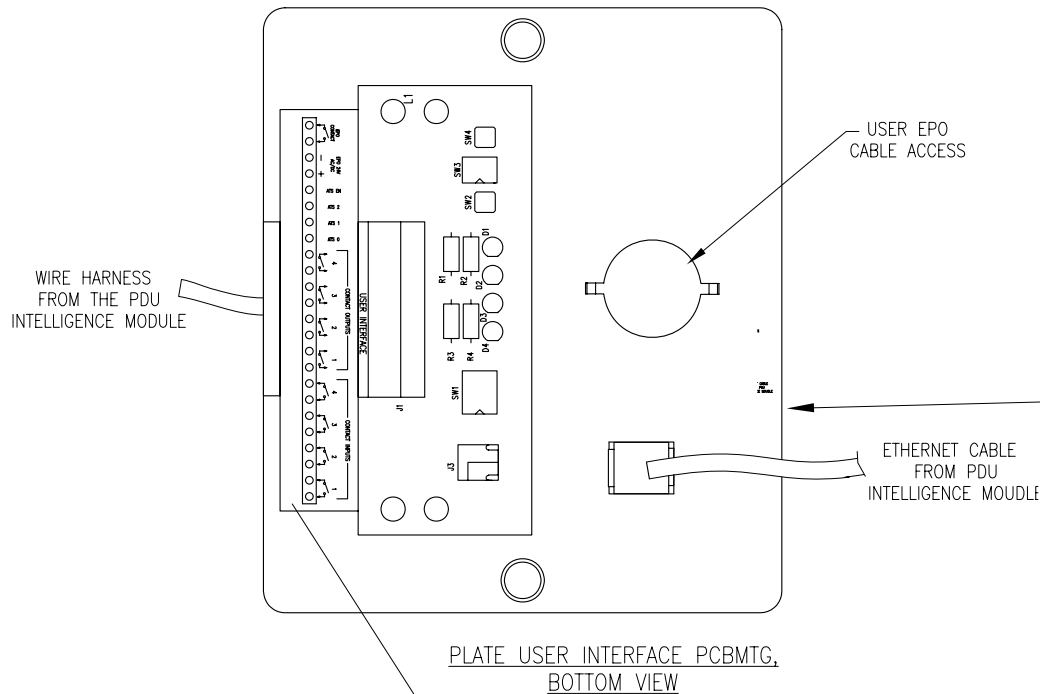
THIS DRAWING AND SPECIFICATIONS HEREIN ARE THE PROPERTY OF SCHNEIDER ELECTRIC AND SHALL NOT BE COPIED, REPRODUCED OR USED IN WHOLE OR IN PART, AS THE BASIS FOR THE MANUFACTURE OR SALE OF ITEMS WITHOUT WRITTEN PERMISSION FROM SCHNEIDER ELECTRIC. THIS DRAWING IS BASED UPON LATEST AVAILABLE INFORMATION AND IS SUBJECT TO CHANGE WITHOUT NOTICE.



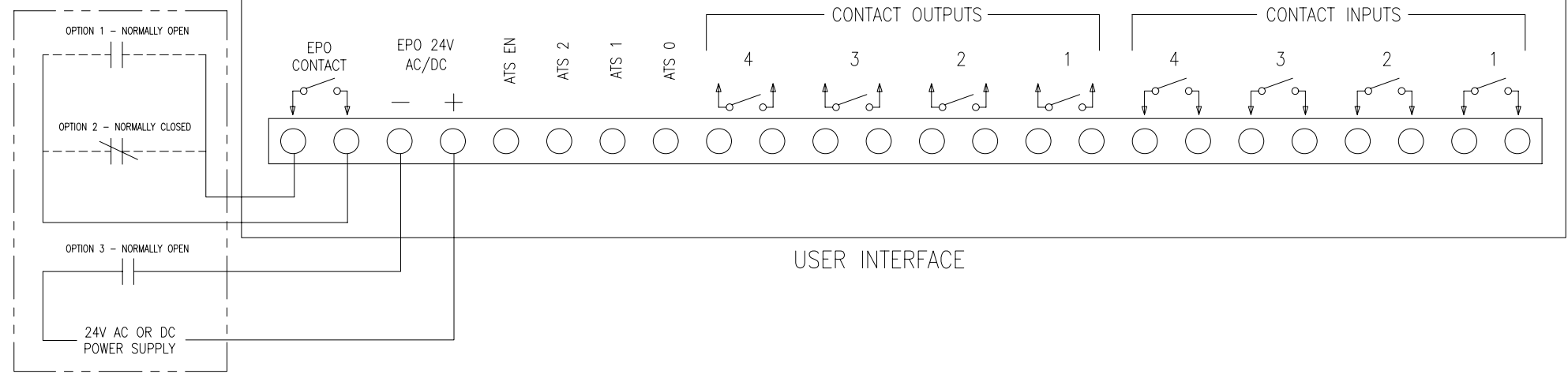
TITLE: CONFIGURABLE POWER DISTRIBUTION  
 InfraStruxure PDU 60kW TRANSFORMERLESS  
 Input: 208V, 3PH, 60Hz  
 Output: 208V, 3PH, 60Hz  
 MIMIC DIAGRAM & TYPICAL BREAKER CONNECTION  
 PROJECT: DRAWINGS | SHEET 9 OF 13

DWG NO: PDRPPNX10  
 DRAWN BY: JAYAPRAKASH 01-MAR-12  
 ENGINEER: J.RING/F.DIOSA 19-MAR-12  
 APPROVED BY: R.HANSEN/E.SILVA 19-MAR-12

REV: 0  
 THIRD ANGLE PROJECTION



EPO - EXTERNAL SET OF DRY CONTACTS OR AC/DC POWER SUPPLY



- NOTES:**
1. INSTALLATION SHALL COMPLY WITH ALL APPLICABLE NATIONAL, STATE AND LOCAL CODES.
  2. PLEASE REFER TO PRODUCT MANUALS PRIOR TO INSTALLATION AND SITE PREPARATION WORK FOR FURTHER DETAILS.

THIS DRAWING AND SPECIFICATIONS HEREIN ARE THE PROPERTY OF SCHNEIDER ELECTRIC AND SHALL NOT BE COPIED, REPRODUCED OR USED IN WHOLE OR IN PART, AS THE BASIS FOR THE MANUFACTURE OR SALE OF ITEMS WITHOUT WRITTEN PERMISSION FROM SCHNEIDER ELECTRIC. THIS DRAWING IS BASED UPON LATEST AVAILABLE INFORMATION AND IS SUBJECT TO CHANGE WITHOUT NOTICE.



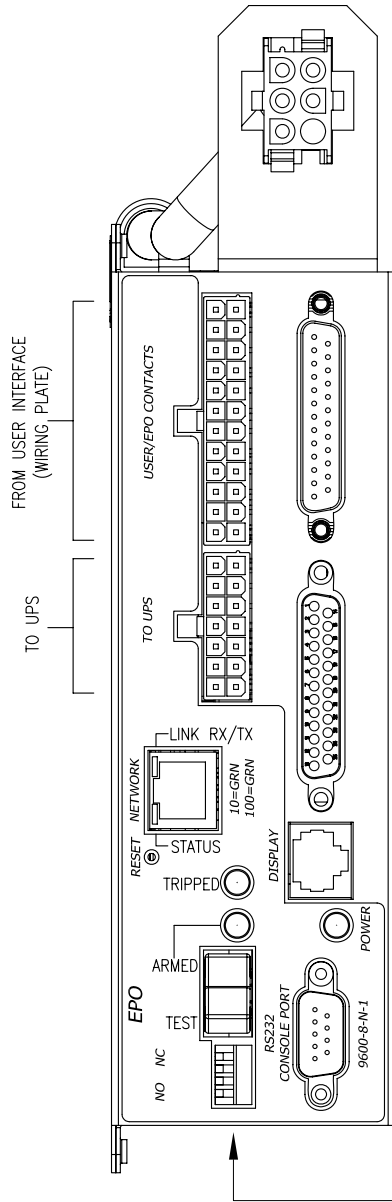
TITLE: CONFIGURABLE POWER DISTRIBUTION  
 InfraStruxure PDU 60kW TRANSFORMERLESS  
 Input: 208V, 3PH, 60Hz  
 Output: 208V, 3PH, 60Hz  
 EPO INTERFACE

DWG NO: PDRPPNX10

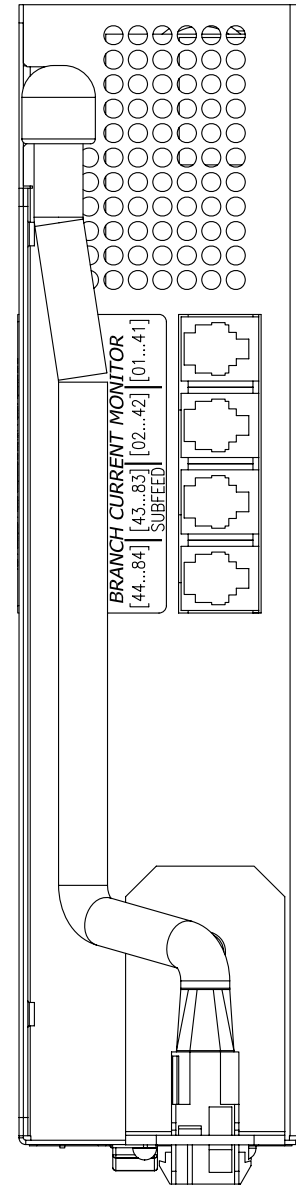
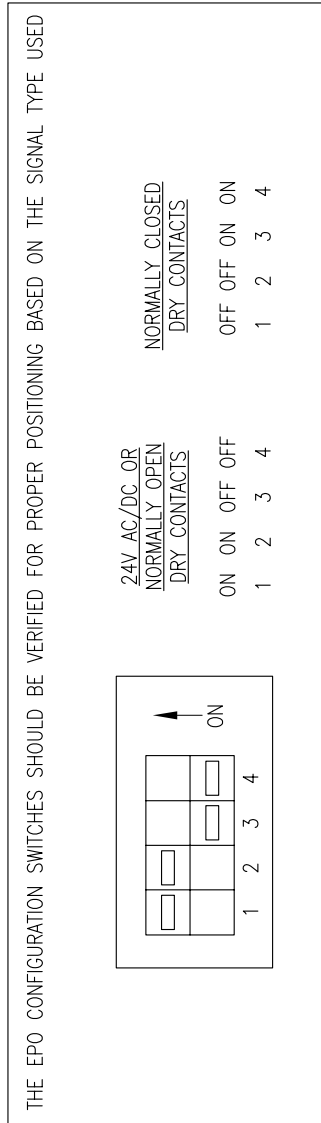
DRAWN BY:	JAYAPRAKASH	01-MAR-12
ENGINEER:	J.RING/F.DIOSA	19-MAR-12
APPROVED BY:	R.HANSEN/E.SILVA	19-MAR-12

REV: 0  
 THIRD ANGLE PROJECTION

# PDU INTELLIGENCE MODULE



FRONT VIEW



TOP VIEW

CONNECTORS ARE PREWIRED IF PDU IS PURCHASED WITH BRANCH CURRENT MONITORING SYSTEM

- NOTES:**
1. INSTALLATION SHALL COMPLY WITH ALL APPLICABLE NATIONAL, STATE AND LOCAL CODES.
  2. PLEASE REFER TO PRODUCT MANUALS PRIOR TO INSTALLATION AND SITE PREPARATION WORK FOR FURTHER DETAILS.

THIS DRAWING AND SPECIFICATIONS HEREIN ARE THE PROPERTY OF SCHNEIDER ELECTRIC AND SHALL NOT BE COPIED, REPRODUCED OR USED IN WHOLE OR IN PART, AS THE BASIS FOR THE MANUFACTURE OR SALE OF ITEMS WITHOUT WRITTEN PERMISSION FROM SCHNEIDER ELECTRIC. THIS DRAWING IS BASED UPON LATEST AVAILABLE INFORMATION AND IS SUBJECT TO CHANGE WITHOUT NOTICE.



**TITLE:** CONFIGURABLE POWER DISTRIBUTION  
 InfraStruxure PDU 60kW TRANSFORMERLESS  
 Input: 208V, 3PH, 60Hz  
 Output: 208V, 3PH, 60Hz  
 INTELLIGENCE MODULE

**DWG NO:** PDRPPNX10

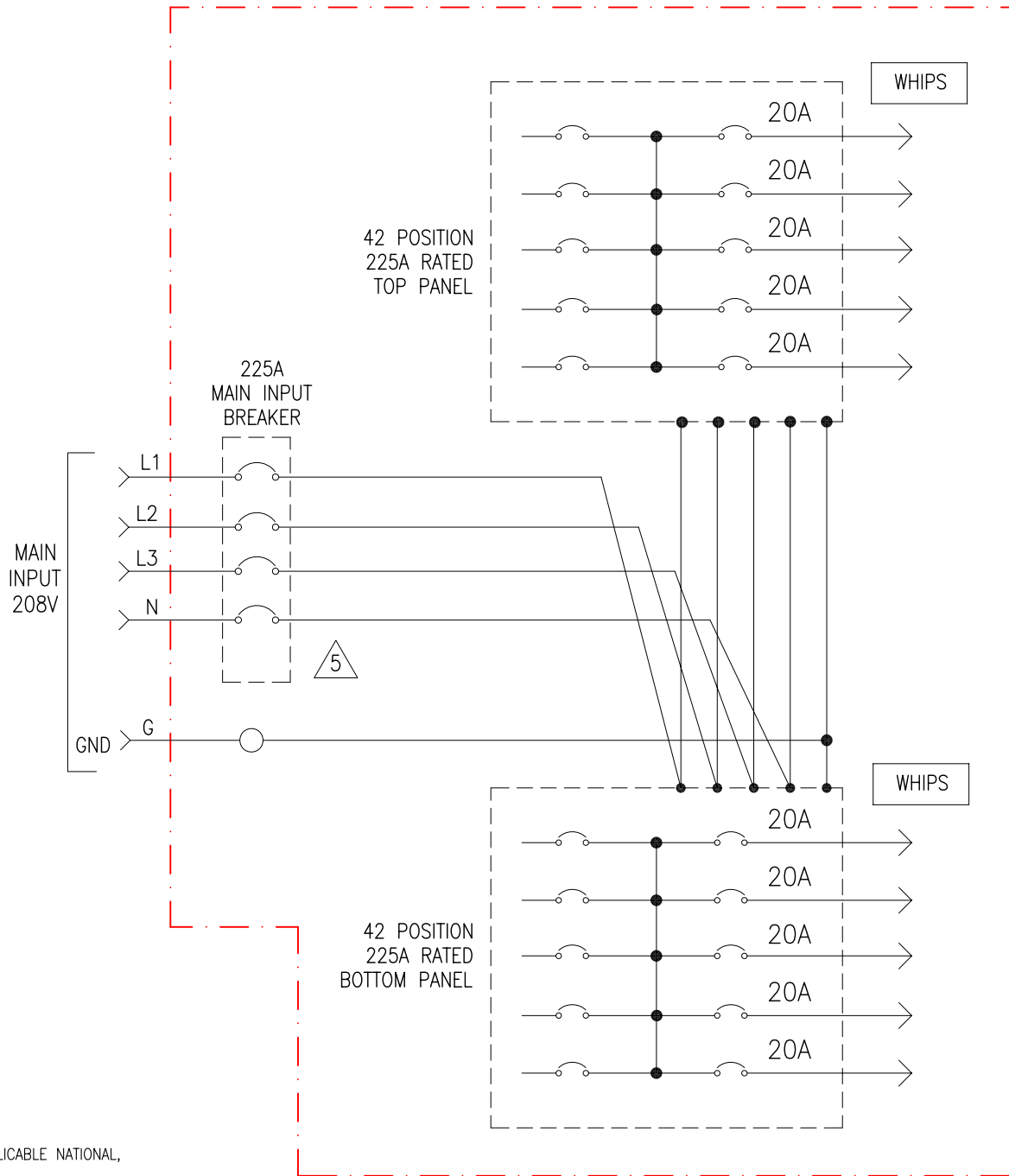
**DRAWN BY:** JAYAPRAKASH 01-MAR-12

**ENGINEER:** J.RING/F.DIOSA 19-MAR-12

**PROJECT:** DRAWINGS

**APPROVED BY:** R.HANSEN/E.SILVA 19-MAR-12

**REV:** 0  
**THIRD ANGLE PROJECTION**



**NOTES:**

1. INSTALLATION SHALL COMPLY WITH ALL APPLICABLE NATIONAL, STATE AND LOCAL CODES.
2. PLEASE REFER TO PRODUCT MANUALS PRIOR TO INSTALLATION AND SITE PREPARATION WORK FOR FURTHER DETAILS.
3. RACK FRAME AND SKINS ARE ELECTRICALLY CONNECTED AND TIED TO CHASSIS GROUND.
4. TRANSFORMER BASE IS GROUNDED THROUGH FRAME.
- △ 5. SHUNT TRIP ON EPO SIGNAL

THIS DRAWING AND SPECIFICATIONS HEREIN ARE THE PROPERTY OF SCHNEIDER ELECTRIC AND SHALL NOT BE COPIED, REPRODUCED OR USED IN WHOLE OR IN PART, AS THE BASIS FOR THE MANUFACTURE OR SALE OF ITEMS WITHOUT WRITTEN PERMISSION FROM SCHNEIDER ELECTRIC. THIS DRAWING IS BASED UPON LATEST AVAILABLE INFORMATION AND IS SUBJECT TO CHANGE WITHOUT NOTICE.



TITLE: CONFIGURABLE POWER DISTRIBUTION  
 InfraStruxure PDU 60kW TRANSFORMERLESS  
 Input: 208V, 3PH, 60Hz  
 Output: 208V, 3PH, 60Hz  
 FIVE LINE DIAGRAM

DWG NO:	PDRPPNX10		REV.	0
DRAWN BY:	JAYAPRAKASH	01-MAR-12	ANGLE	
ENGINEER:	J.RING	19-MAR-12	PROJECTION	
APPROVED BY:	B.SHERIDAN/E.SILVA	19-MAR-12	NA	

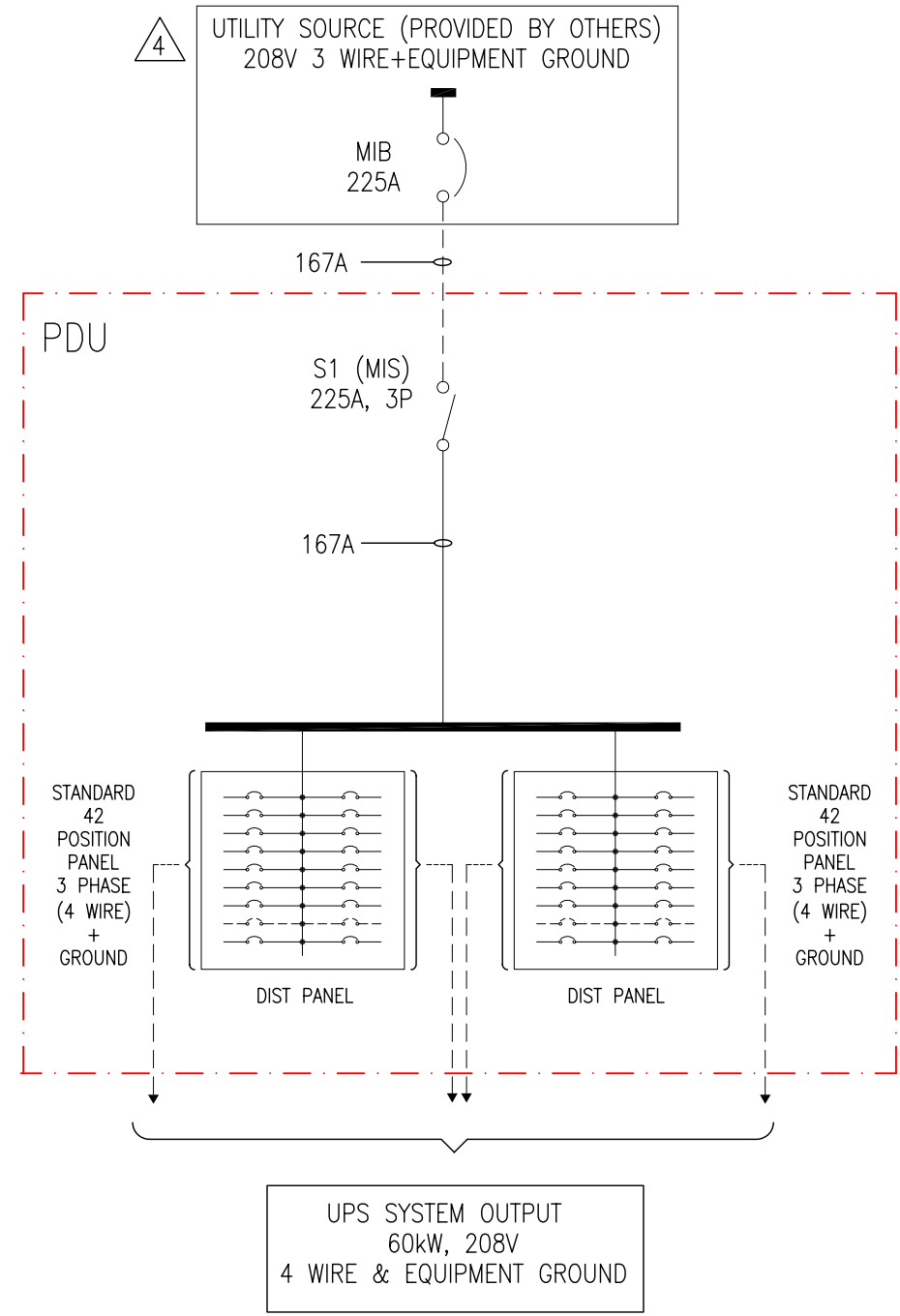
**LEGEND:**

----- AC CABLE - PROVIDED BY OTHERS.

————— AC BUS

**NOTES:**

1. INSTALLATION SHALL COMPLY WITH ALL APPLICABLE NATIONAL, STATE AND LOCAL CODES.
2. PLEASE REFER TO PRODUCT MANUALS PRIOR TO INSTALLATION AND SITE PREPARATION WORK FOR FURTHER DETAILS.
3. DRAWING DEPICTS POWER SYSTEM CONNECTIONS AND IS NOT REPRESENTATIVE OF PHYSICAL LAYOUT, PLEASE REFER TO MECHANICAL DRAWINGS FOR PHYSICAL LAYOUT.
- △ 4. AC SOURCE TO BE 208VAC 3PH 4 WIRE + EQUIPMENT GROUND (PROVIDED BY OTHERS).
5. INPUT OVERCURRENT PROTECTION AND WIRING MUST BE INSTALLED FOR A FULLY RATED 40kW SYMMETRA 3 PHASE. INPUT OVERCURRENT PROTECTION IS BASED ON 80% RATING. ANY DEVIATION PLEASE CONTACT SCHNEIDER ELECTRIC.



THIS DRAWING AND SPECIFICATIONS HEREIN ARE THE PROPERTY OF SCHNEIDER ELECTRIC AND SHALL NOT BE COPIED, REPRODUCED OR USED IN WHOLE OR IN PART, AS THE BASIS FOR THE MANUFACTURE OR SALE OF ITEMS WITHOUT WRITTEN PERMISSION FROM SCHNEIDER ELECTRIC. THIS DRAWING IS BASED UPON LATEST AVAILABLE INFORMATION AND IS SUBJECT TO CHANGE WITHOUT NOTICE.



TITLE: CONFIGURABLE POWER DISTRIBUTION  
InfraStruxure PDU 60kW TRANSFORMERLESS  
Input: 208V, 3PH, 60Hz  
Output: 208V, 3PH, 60Hz  
SYSTEM ONLE LINE DIAGRAM

PROJECT: DRAWINGS | SHEET 13 OF 13

DWG NO: PDRPPNX10

DRAWN BY: JAYAPRAKASH | 01-MAR-12

ENGINEER: J.RING/A.WARNER | 19-MAR-12

APPROVED BY: B.SHERIDAN/F.DIOSA | 19-MAR-12

REV: 0

ANGLE PROJECTION

NA