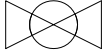

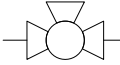

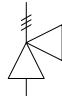

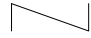


ACRD200-201 - INROW-RD, FLUID COOLED

Sheet No.	Component/Detail	Description
1	Drawing Guide	ACRD200-201, 208-230V, 60Hz Fluid Cooled,
2	Isometric External View	ACRD200-201, 208-230V, 60Hz Fluid Cooled, Isometric External View
3	General Arrangement	ACRD200-201, 208-230V, 60Hz Fluid Cooled, General Arrangement
4	Top and Bottom View	ACRD200-201, 208-230V, 60Hz Fluid Cooled, Top and Bottom View
5	Anchoring Details	ACRD200-201, 208-230V, 60Hz Fluid Cooled, Anchoring Details
6-8	Internal View	ACRD200-201, 208-230V, 60Hz Fluid Cooled, Internal View
9	Piping Diagram	ACRD200-201, 208-230V, 60Hz Fluid Cooled, Piping Diagram
10	Electrical Piping Data	ACRD200-201, 208-230V, 60Hz Fluid Cooled, Electrical Piping Data
11	User Interface	ACRD200-201, 208-230V, 60Hz Fluid Cooled, User Interface
12-13	Control Wiring	ACRD200-201, 208-230V, 60Hz Fluid Cooled, Control Wiring

LEGEND			
SYMBOL	DESCRIPTION	SYMBOL	DESCRIPTION
	SHUT OFF VALVE		P-Trap
	HEAD PRESSURE CONTROL VALVE		S-Trap
	PRESSURE RELIEF VALVE		Inverted Trap
	CHECK VALVE		

THIS DRAWING AND SPECIFICATIONS HEREIN ARE THE PROPERTY OF SCHNEIDER ELECTRIC AND SHALL NOT BE COPIED, REPRODUCED OR USED IN WHOLE OR IN PART, AS THE BASIS FOR THE MANUFACTURE OR SALE OF ITEMS WITHOUT WRITTEN PERMISSION FROM SCHNEIDER ELECTRIC. THIS DRAWING IS BASED UPON LATEST AVAILABLE INFORMATION AND IS SUBJECT TO CHANGE WITHOUT NOTICE.



TITLE: InRow DIRECT EXPANSION
InRow RD, 300mm, FLUID COOLED
ACRD200 : 208 - 230V, 60 Hz
ACRD201 : 220 - 240V, 50 Hz
DRAWING GUIDE

PROJECT: DRAWINGS SHEET 1 OF 13

DWG NO: ACRD200-201 REV. 1

DRAWN: SURAJ P/M CRAVEN 26-FEB-13

ENGINEER: R GRANTHAN/M BROWN 29-MAR-12

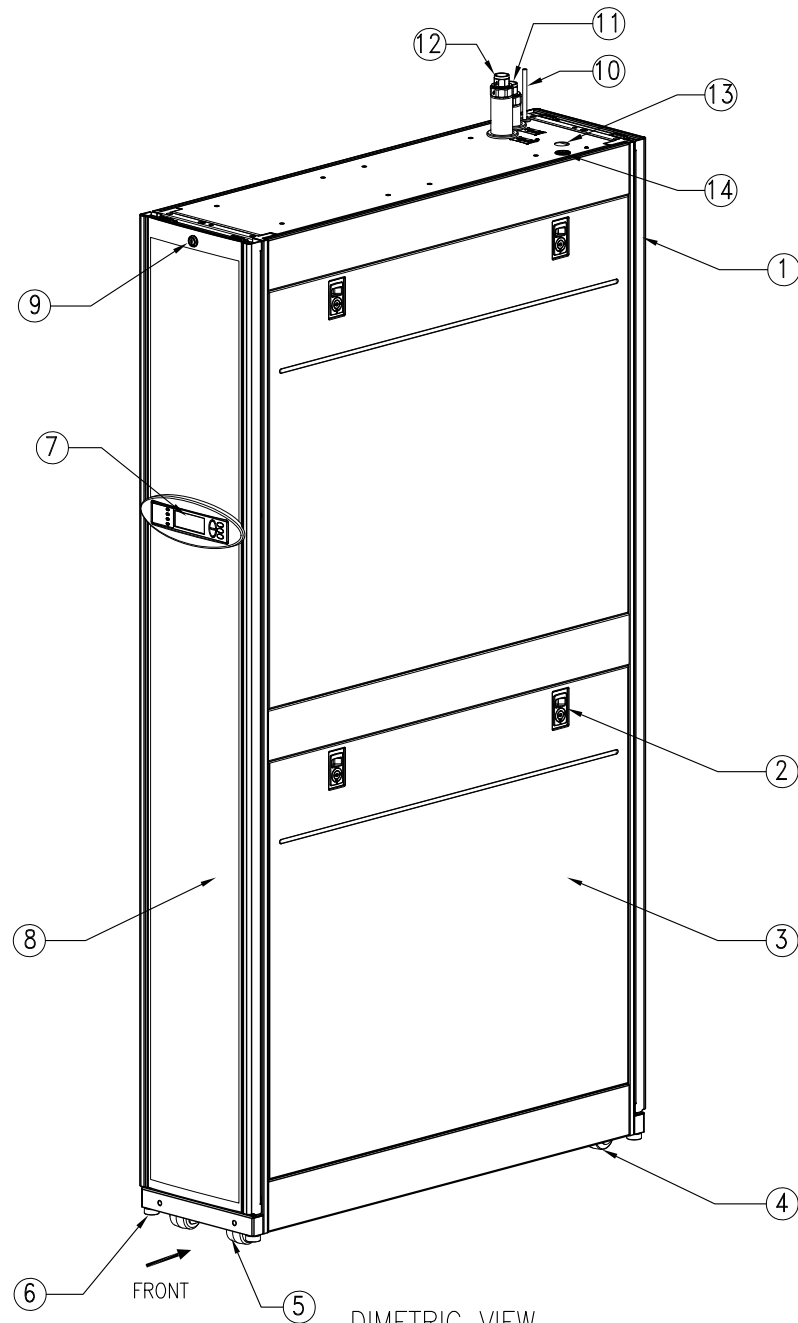
APPROVED: C CUMMSKEY/C ZALDIVAR 29-MAR-12

ANGLE

PROJECTION:

N/A

- ① REMOVAL REAR DOOR.
- ② SIDE PANEL LATCH.
- ③ REMOVABLE SIDE PANEL.
- ④ REAR CASTERS (NON-SWIVELING).
- ⑤ FRONT CASTERS (SWIVELING).
- ⑥ ADJUSTABLE LEVELING FOOT.
- ⑦ DISPLAY INTERFACE.
- ⑧ REMOVABLE FRONT DOOR.
- ⑨ DOOR LOCK.
- ⑩ TOP CONDENSATE PUMP DRAIN.
- ⑪ LIQUID IN (SUPPLY).
- ⑫ LIQUID OUT (RETURN).
- ⑬ ELECTRICAL POWER INPUT
- ⑭ LOW VOLTAGE WIRING INPUT



DIMETRIC VIEW
(External)

NOTES:

1. INSTALLATION SHALL COMPLY WITH ALL APPLICABLE NATIONAL, STATE AND LOCAL ELECTRICAL REGULATIONS.
2. PLEASE REFER TO PRODUCT MANUALS FOR ADDITIONAL DETAILS PRIOR TO INSTALLATION AND SITE PREPARATION WORK.

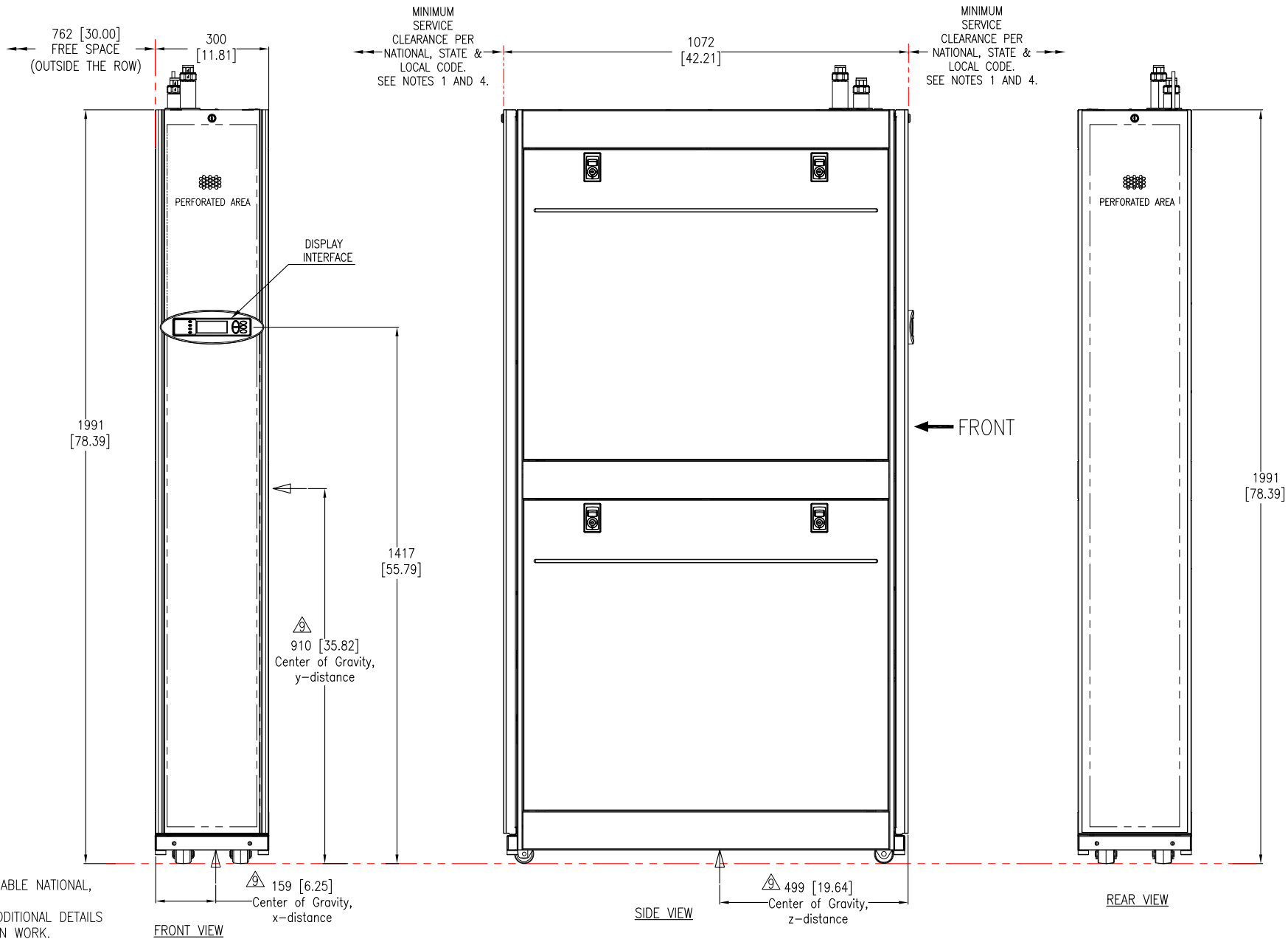
THIS DRAWING AND SPECIFICATIONS HEREIN ARE THE PROPERTY OF SCHNEIDER ELECTRIC AND SHALL NOT BE COPIED, REPRODUCED OR USED IN WHOLE OR IN PART, AS THE BASIS FOR THE MANUFACTURE OR SALE OF ITEMS WITHOUT WRITTEN PERMISSION FROM SCHNEIDER ELECTRIC. THIS DRAWING IS BASED UPON LATEST AVAILABLE INFORMATION AND IS SUBJECT TO CHANGE WITHOUT NOTICE.



TITLE: InRow DIRECT EXPANSION
InRow RD, 300mm, FLUID COOLED
ACRD200 : 208 - 230V, 60 Hz
ACRD201 : 220 - 240V, 50 Hz
ISOMETRIC EXTERNAL VIEW

DWG NO: ACRD200-201 REV. 0

DRAWN: SURAJ P	27-JAN-12	ANGLE
ENGINEER: R GRANTHAN/M BROWN	29-MAR-12	PROJECTION:
APPROVED: C CUMMISKEY/C ZALDIVAR	29-MAR-12	N/A



NOTES:

1. INSTALLATION SHALL COMPLY WITH ALL APPLICABLE NATIONAL, STATE AND LOCAL ELECTRICAL REGULATIONS.
2. PLEASE REFER TO PRODUCT MANUALS FOR ADDITIONAL DETAILS PRIOR TO INSTALLATION AND SITE PREPARATION WORK.
3. UNLESS OTHERWISE SPECIFIED, ALL DIMENSIONS ARE IN MILLIMETERS [INCHES].
4. A MINIMUM OF 1200 mm [48"] CLEARANCE IS REQUIRED IN FRONT OR REAR OF THE ACRD UNIT IF THE UNIT HAS TO BE REMOVED FROM THE ROW.
5. FRONT AND REAR ACCESS IS REQUIRED FOR SERVICE.
6. MAXIMUM WEIGHT OF UNIT IS 190 kg [419 lb].
8. FLOOR LOADING: 595kg/meter² [122 lb/ft²].
- △9. THIS INFORMATION PROVIDED CONSERVATIVE CENTER OF GRAVITY CALCULATION.

THIS DRAWING AND SPECIFICATIONS HEREIN ARE THE PROPERTY OF SCHNEIDER ELECTRIC AND SHALL NOT BE COPIED, REPRODUCED OR USED IN WHOLE OR IN PART, AS THE BASIS FOR THE MANUFACTURE OR SALE OF ITEMS WITHOUT WRITTEN PERMISSION FROM SCHNEIDER ELECTRIC. THIS DRAWING IS BASED UPON LATEST AVAILABLE INFORMATION AND IS SUBJECT TO CHANGE WITHOUT NOTICE.

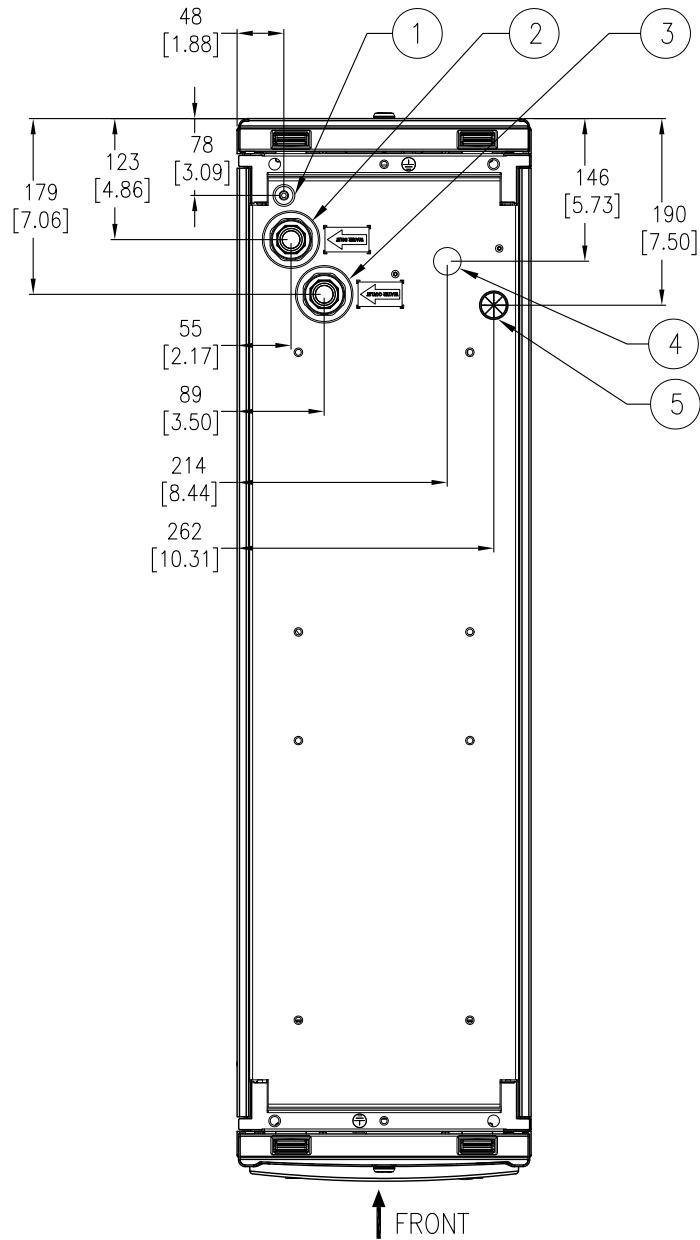


TITLE: InRow DIRECT EXPANSION
InRow RD, 300mm, FLUID COOLED
ACRD200 : 208 - 230V, 60 Hz
ACRD201 : 220 - 240V, 50 Hz
GENERAL ARRANGEMENT

PROJECT: DRAWINGS SHEET 3 OF 13

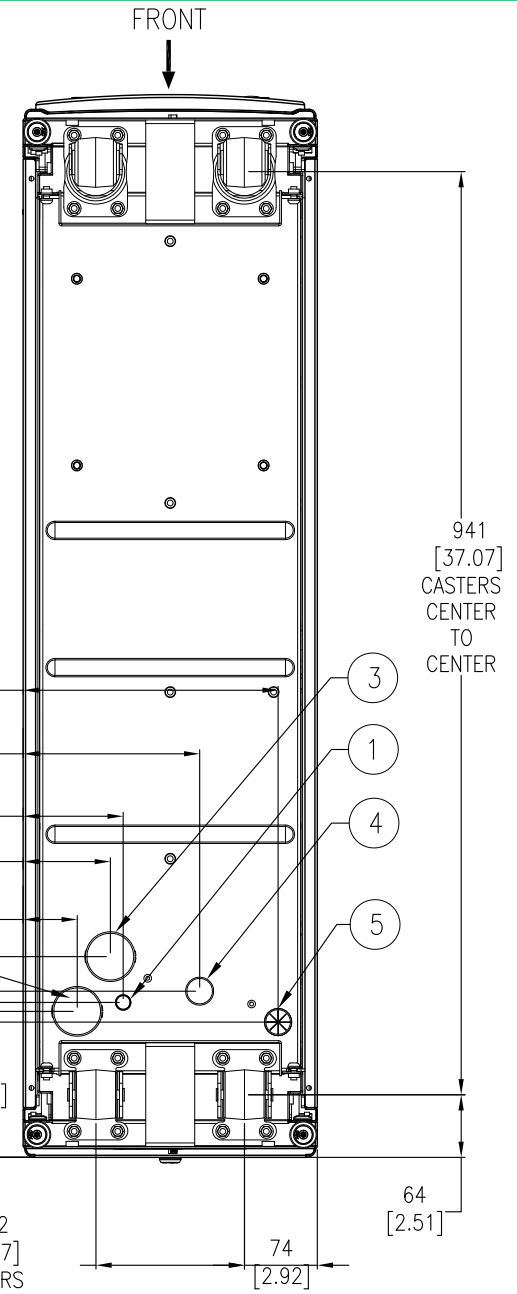
DWG NO: ACRD200-201 REV. 0

DRAWN: SURAJ P	27-JAN-12	FIRST ANGLE PROJECTION
ENGINEER: R GRANTHAN/M BROWN	29-MAR-12	
APPROVED: C CUMMISKEY/C ZALDIVAR	29-MAR-12	



TOP VIEW

(PIPING & POWER FEED LOCATIONS FOR TOP ENTRY)



BOTTOM VIEW

(PIPING & POWER FEED LOCATIONS FOR BOTTOM ENTRY)

- ① CONDENSATE PUMP OUTLET
- ② LIQUID IN (SUPPLY)
- ③ LIQUID OUT (RETURN)
- ④ ELECTRICAL POWER INPUT
- ⑤ LOW VOLTAGE WIRING INPUT

NOTES:

1. INSTALLATION SHALL COMPLY WITH ALL APPLICABLE NATIONAL, STATE AND LOCAL ELECTRICAL REGULATIONS.
2. PLEASE REFER TO PRODUCT MANUALS FOR ADDITIONAL DETAILS PRIOR TO INSTALLATION AND SITE PREPARATION WORK.
3. UNLESS OTHERWISE SPECIFIED, ALL DIMENSIONS ARE IN MILLIMETERS [INCHES].

THIS DRAWING AND SPECIFICATIONS HEREIN ARE THE PROPERTY OF SCHNEIDER ELECTRIC AND SHALL NOT BE COPIED, REPRODUCED OR USED IN WHOLE OR IN PART, AS THE BASIS FOR THE MANUFACTURE OR SALE OF ITEMS WITHOUT WRITTEN PERMISSION FROM SCHNEIDER ELECTRIC. THIS DRAWING IS BASED UPON LATEST AVAILABLE INFORMATION AND IS SUBJECT TO CHANGE WITHOUT NOTICE.

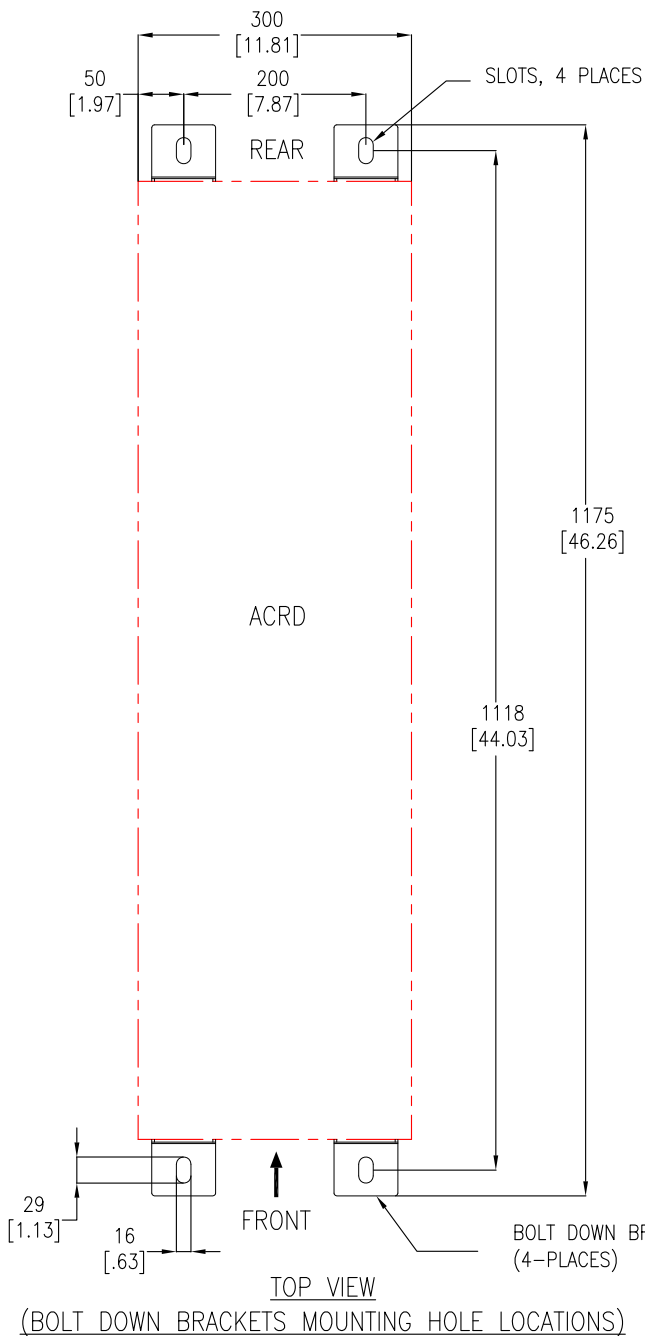


TITLE: InRow DIRECT EXPANSION
InRow RD, 300mm, FLUID COOLED
ACRD200 : 208 - 230V, 60 Hz
ACRD201 : 220 - 240V, 50 Hz
TOP VIEW & BOTTOM VIEW

PROJECT: DRAWINGS SHEET 4 OF 13

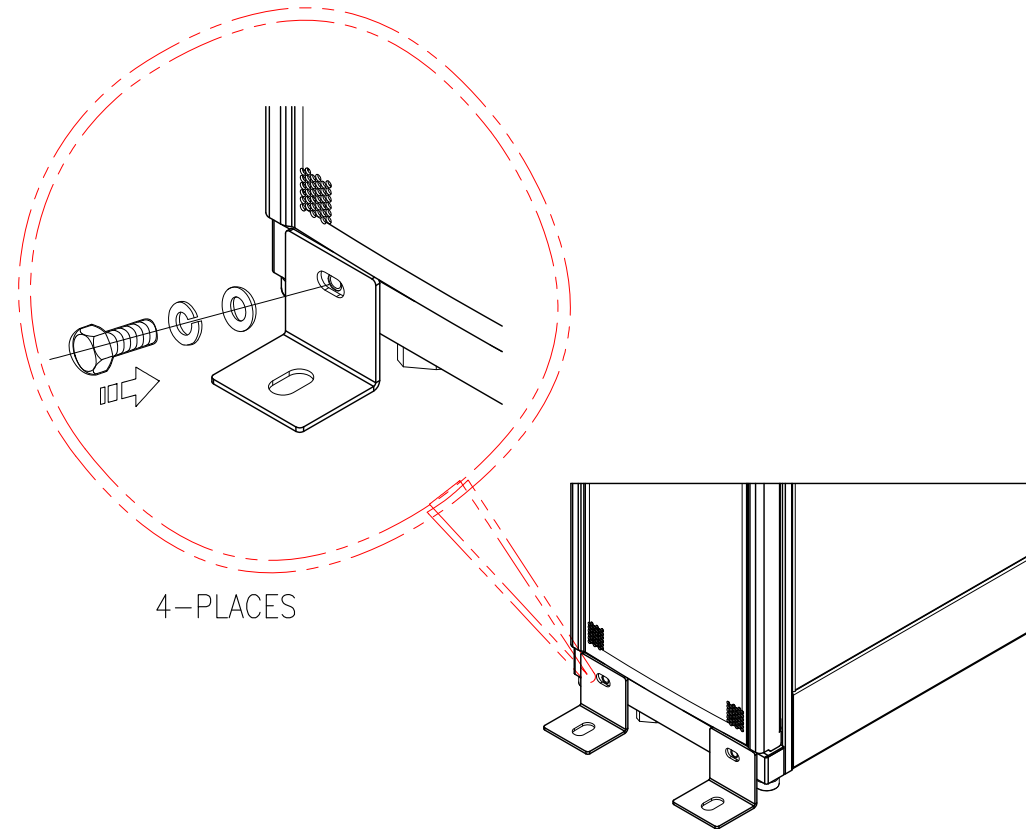
DWG NO: ACRD200-201 REV: 0
DRAWN: SURAJ P 27-JAN-12
ENGINEER: R GRANTHAN/M BROWN 29-MAR-12
APPROVED: C CUMMISKEY/C ZALDIVAR 29-MAR-12

FIRST ANGLE PROJECTION



IT IS NOT RECOMMENDED TO PRE-DRILL HOLES BEFORE PLACING RD UNITS IN ROW.

STABILIZING THE InRow RD:
TO PREVENT THE ENCLOSURE FROM MOVING FROM ITS FINAL LOCATION (IF NOT BAYED TO ANOTHER DEVICE). USE AR7701(BOLT-DOWN KIT) WHICH IS INCLUDED IN THE SHIP LOOSE PARTS KIT). ATTACH THE BRACKETS TO THE UNIT AS SHOWN. USE CODE COMPLIANT FASTENERS TO SECURE THE UNIT TO THE FLOOR.



- NOTES:
1. INSTALLATION SHALL COMPLY WITH ALL APPLICABLE NATIONAL, STATE AND LOCAL ELECTRICAL REGULATIONS.
 2. PLEASE REFER TO PRODUCT MANUALS FOR ADDITIONAL DETAILS PRIOR TO INSTALLATION AND SITE PREPARATION WORK.
 3. UNLESS OTHERWISE SPECIFIED, ALL DIMENSIONS ARE IN MILLIMETERS [INCHES].
 4. BOLT DOWN KIT (#AR7701) IS OPTIONAL AND HAS TO BE ORDERED SEPARATELY.
 5. REFER TO "InfraStruXure InRow-RD SEISMIC INSTALLATION GUIDE" FOR SEISMIC ANCHORING GUIDELINES.

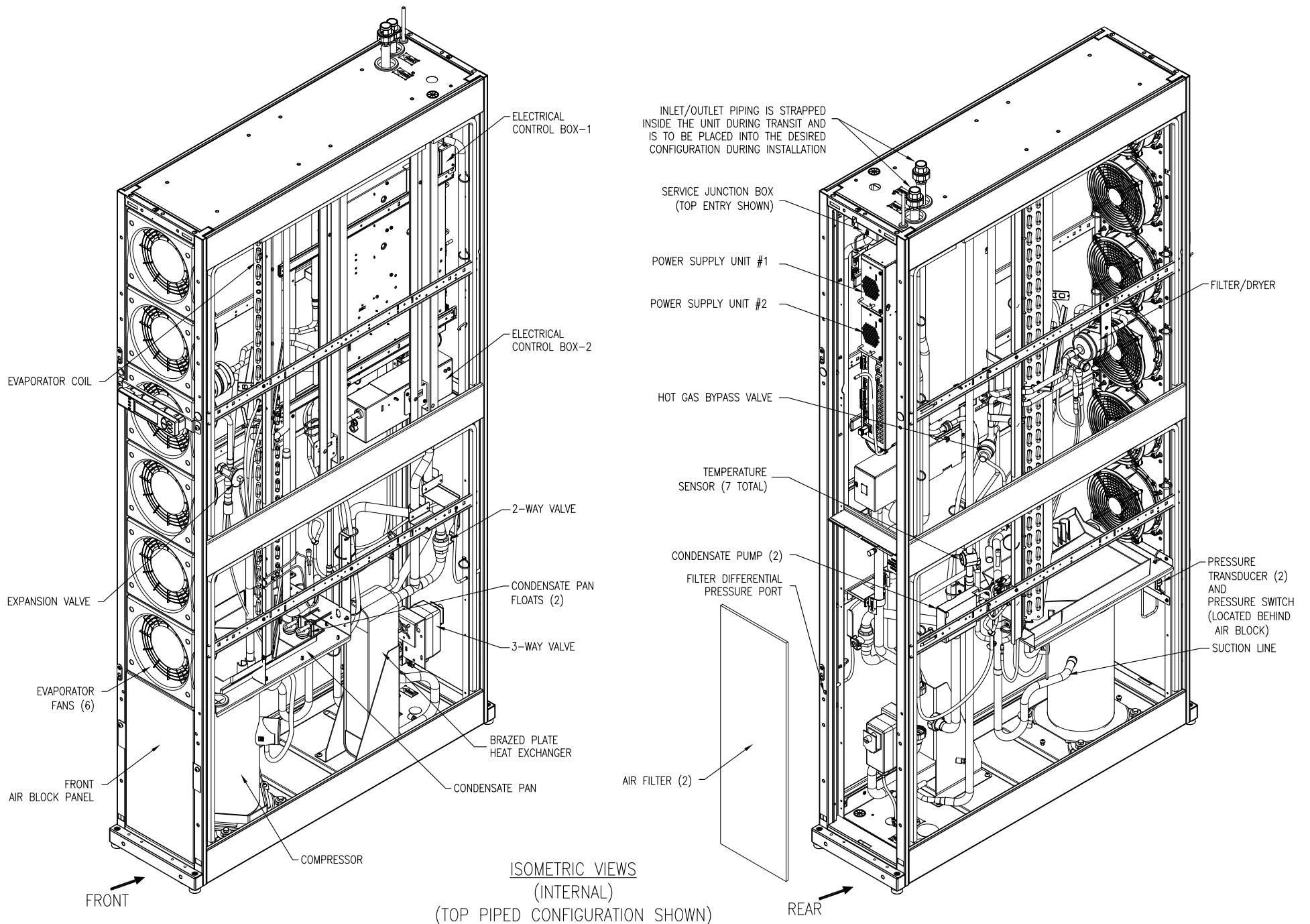
THIS DRAWING AND SPECIFICATIONS HEREIN ARE THE PROPERTY OF SCHNEIDER ELECTRIC AND SHALL NOT BE COPIED, REPRODUCED OR USED IN WHOLE OR IN PART, AS THE BASIS FOR THE MANUFACTURE OR SALE OF ITEMS WITHOUT WRITTEN PERMISSION FROM SCHNEIDER ELECTRIC. THIS DRAWING IS BASED UPON LATEST AVAILABLE INFORMATION AND IS SUBJECT TO CHANGE WITHOUT NOTICE.



TITLE: InRow DIRECT EXPANSION
InRow RD, 300mm, FLUID COOLED
ACRD200 : 208 - 230V, 60 Hz
ACRD201 : 220 - 240V, 50 Hz
ANCHORING DETAILS

DWG NO: ACRD200-201 REV. 0

DRAWN: SURAJ P	27-JAN-12	FIRST ANGLE PROJECTION
ENGINEER: R GRANTHAN/M BROWN	29-MAR-12	
APPROVED: C CUMMISKEY/C ZALDIVAR	29-MAR-12	



- NOTES:
1. INSTALLATION SHALL COMPLY WITH ALL APPLICABLE NATIONAL, STATE AND LOCAL ELECTRICAL REGULATIONS.
 2. PLEASE REFER TO PRODUCT MANUALS FOR ADDITIONAL DETAILS PRIOR TO INSTALLATION AND SITE PREPARATION WORK.
 3. UNIT IS SHIPPED CONFIGURED FOR TOP ENTRY.
 4. SOME MECHANICAL COMPONENTS HAVE BEEN OMITTED FOR PURPOSE OF CLARITY.

THIS DRAWING AND SPECIFICATIONS HEREIN ARE THE PROPERTY OF SCHNEIDER ELECTRIC AND SHALL NOT BE COPIED, REPRODUCED OR USED IN WHOLE OR IN PART, AS THE BASIS FOR THE MANUFACTURE OR SALE OF ITEMS WITHOUT WRITTEN PERMISSION FROM SCHNEIDER ELECTRIC. THIS DRAWING IS BASED UPON LATEST AVAILABLE INFORMATION AND IS SUBJECT TO CHANGE WITHOUT NOTICE.



TITLE: InRow DIRECT EXPANSION InRow RD, 300mm, FLUID COOLED
 ACRD200 : 208 - 230V, 60 Hz
 ACRD201 : 220 - 240V, 50 Hz
 ISOMETRIC INTERNAL VIEW

PROJECT: DRAWINGS SHEET 6 OF 13

DWG NO: ACRD200-201

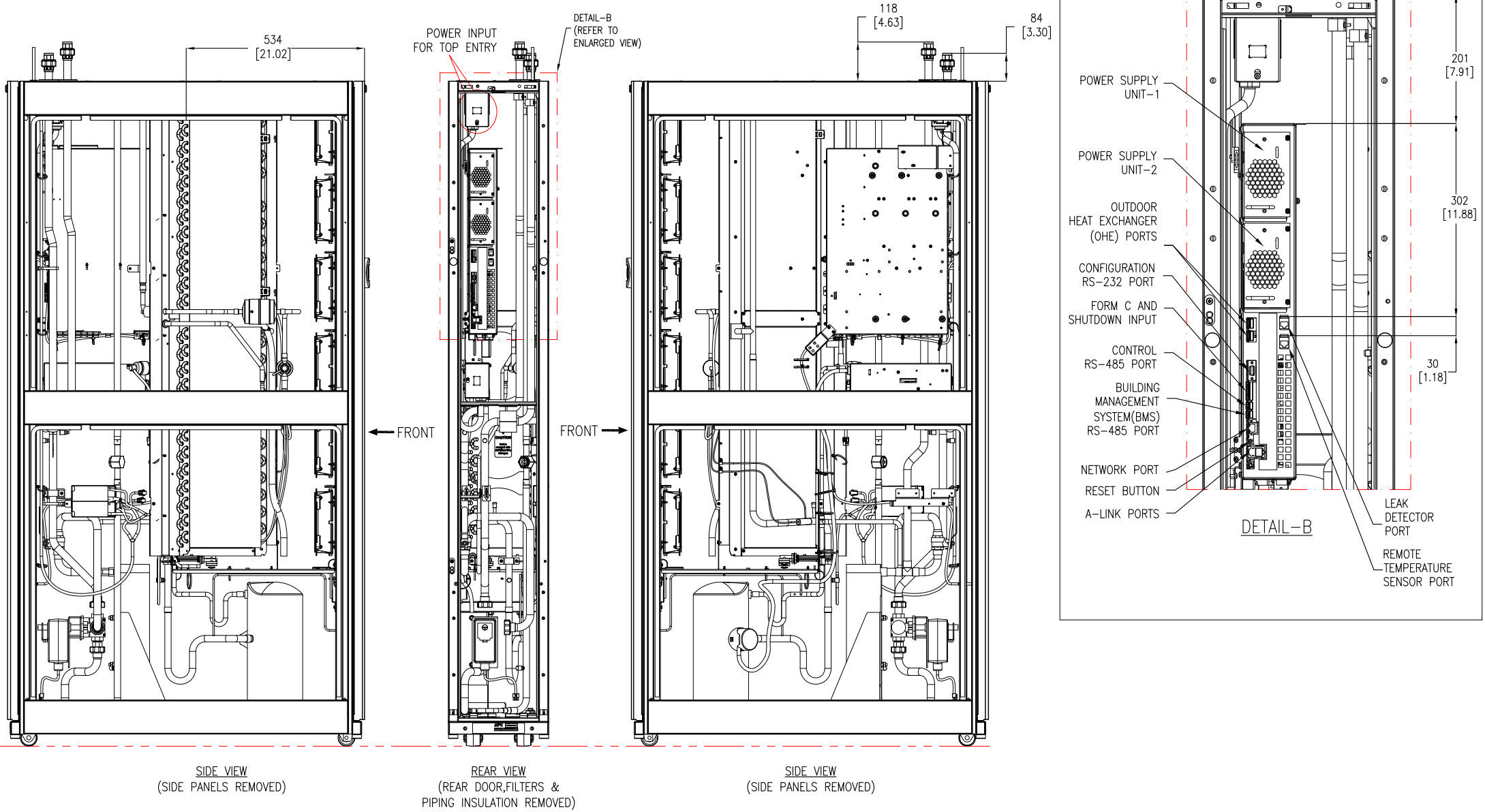
ENGINEER: R GRANTHAN/M BROWN
 APPROVED: C CUMMISKEY/C ZALDIVAR

26-SEP-14
 29-MAR-12
 29-MAR-12

REV. 1

ANGLE PROJECTION

TOP PIPING CONFIGURATION



- NOTES:
1. INSTALLATION SHALL COMPLY WITH ALL APPLICABLE NATIONAL, STATE AND LOCAL ELECTRICAL REGULATIONS.
 2. PLEASE REFER TO PRODUCT MANUALS FOR ADDITIONAL DETAILS PRIOR TO INSTALLATION AND SITE PREPARATION WORK.
 3. UNLESS OTHERWISE SPECIFIED, ALL DIMENSIONS ARE IN MILLIMETERS [INCHES].

THIS DRAWING AND SPECIFICATIONS HEREIN ARE THE PROPERTY OF SCHNEIDER ELECTRIC AND SHALL NOT BE COPIED, REPRODUCED OR USED IN WHOLE OR IN PART, AS THE BASIS FOR THE MANUFACTURE OR SALE OF ITEMS WITHOUT WRITTEN PERMISSION FROM SCHNEIDER ELECTRIC. THIS DRAWING IS BASED UPON LATEST AVAILABLE INFORMATION AND IS SUBJECT TO CHANGE WITHOUT NOTICE.

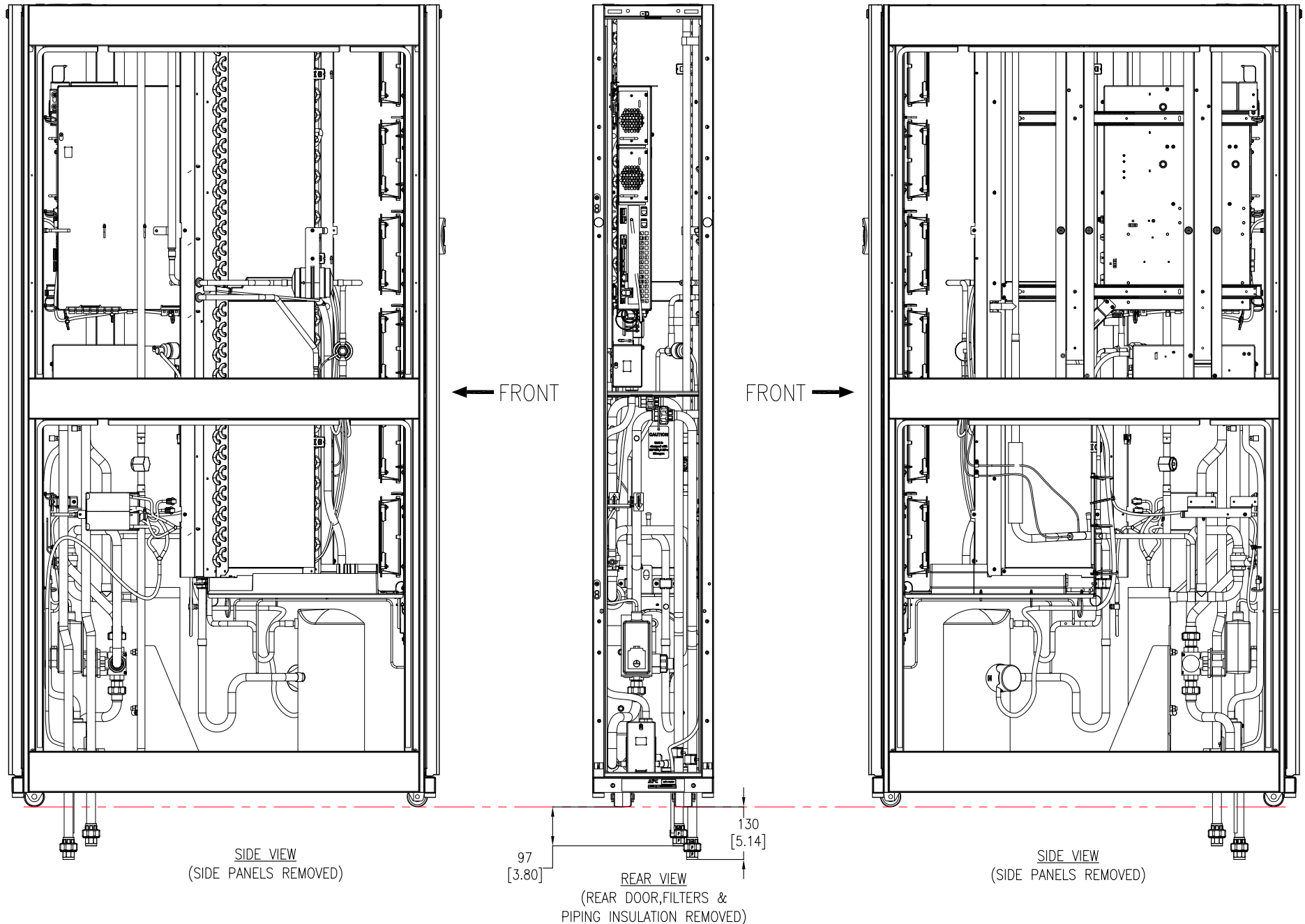


TITLE: InRow DIRECT EXPANSION
InRow RD, 300mm, FLUID COOLED
ACRD200 : 208 - 230V, 60 Hz
ACRD201 : 220 - 240V, 50 Hz
INTERNAL VIEW - TOP PIPING

DWG NO: ACRD200-201 REV. 0

DRAWN: SURAJ P	27-JAN-12	FIRST ANGLE
ENGINEER: R GRANTHAN/M BROWN	29-MAR-12	PROJECTION
APPROVED: C CUMMISKEY/C ZALDIVAR	29-MAR-12	

BOTTOM PIPING CONFIGURATION



- NOTES:**
1. INSTALLATION SHALL COMPLY WITH ALL APPLICABLE NATIONAL, STATE AND LOCAL ELECTRICAL REGULATIONS.
 2. PLEASE REFER TO PRODUCT MANUALS FOR ADDITIONAL DETAILS PRIOR TO INSTALLATION AND SITE PREPARATION WORK.
 3. UNLESS OTHERWISE SPECIFIED, ALL DIMENSIONS ARE IN MILLIMETERS [INCHES].

THIS DRAWING AND SPECIFICATIONS HEREIN ARE THE PROPERTY OF SCHNEIDER ELECTRIC AND SHALL NOT BE COPIED, REPRODUCED OR USED IN WHOLE OR IN PART, AS THE BASIS FOR THE MANUFACTURE OR SALE OF ITEMS WITHOUT WRITTEN PERMISSION FROM SCHNEIDER ELECTRIC. THIS DRAWING IS BASED UPON LATEST AVAILABLE INFORMATION AND IS SUBJECT TO CHANGE WITHOUT NOTICE.



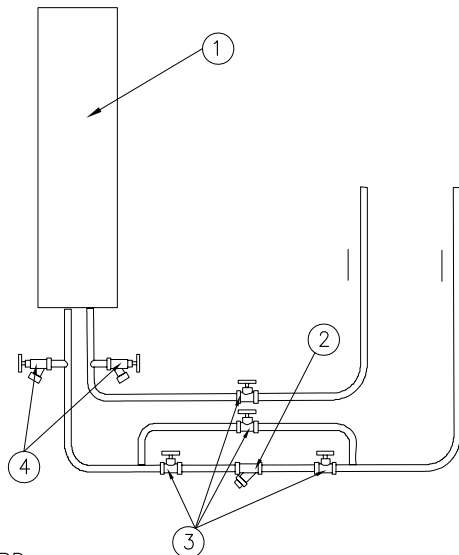
TITLE: InRow DIRECT EXPANSION
 InRow RD, 300mm, FLUID COOLED
 ACRD200 : 208 - 230V, 60 Hz
 ACRD201 : 220 - 240V, 50 Hz
 INTERNAL VIEW - BOTTOM PIPING

DWG NO: ACRD200-201 **REV:** 0

DRAWN: SURAJ P	27-JAN-12	FIRST ANGLE PROJECTION
ENGINEER: R GRANTHAN/M BROWN	29-MAR-12	
APPROVED: C CUMMISKEY/C ZALDIVAR	29-MAR-12	

BOTTOM PIPING SHOWN

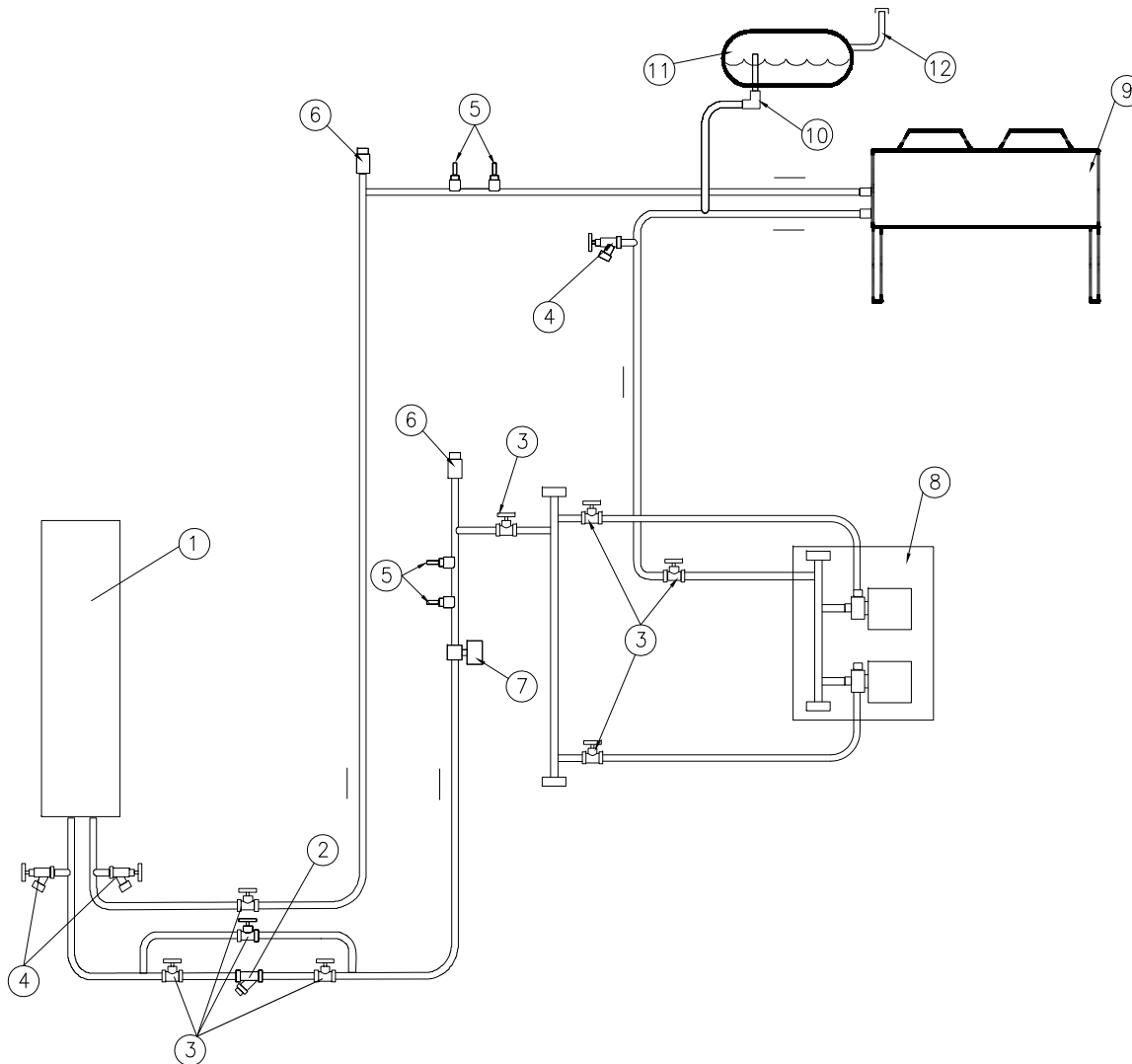
WATER COOLED PIPING



- ① InRow RD
- ② Strainer*
- ③ Gate Valve*
- ④ Hose bib*
- ⑤ Temperature & Pressure gauges*
- ⑥ Air vent*
- ⑦ Flow switch*
- ⑧ Pump package*
- ⑨ Fluid-cooler
- ⑩ Airtrol fitting*
- ⑪ Expansion Tank*
- ⑫ Tank fill*

*Field supplied and installed

GLYCOL COOLED PIPING



NOTES:

1. INSTALLATION SHALL COMPLY WITH ALL APPLICABLE NATIONAL, STATE AND LOCAL ELECTRICAL REGULATIONS.
2. PLEASE REFER TO PRODUCT MANUALS FOR ADDITIONAL DETAILS PRIOR TO INSTALLATION AND SITE PREPARATION WORK.
3. THE TOP PIPING CONFIGURATION WILL HAVE THE SAME VALVES, FITTINGS & STRAINERS AS BOTTOM PIPING CONFIGURATION.

THIS DRAWING AND SPECIFICATIONS HEREIN ARE THE PROPERTY OF SCHNEIDER ELECTRIC AND SHALL NOT BE COPIED, REPRODUCED OR USED IN WHOLE OR IN PART, AS THE BASIS FOR THE MANUFACTURE OR SALE OF ITEMS WITHOUT WRITTEN PERMISSION FROM SCHNEIDER ELECTRIC. THIS DRAWING IS BASED UPON LATEST AVAILABLE INFORMATION AND IS SUBJECT TO CHANGE WITHOUT NOTICE.

Schneider Electric

TITLE: InRow DIRECT EXPANSION
InRow RD, 300mm, FLUID COOLED
ACRD200 : 208 - 230V, 60 Hz
ACRD201 : 220 - 240V, 50 Hz
PIPING DIAGRAM

PROJECT: DRAWINGS SHEET 9 OF 13

DWG NO:	ACRD200-201	REV:	0
DRAWN:	SURAJ P	27-JAN-12	FIRST ANGLE PROJECTION
ENGINEER:	R GRANTHAN/M BROWN	29-MAR-12	
APPROVED:	C CUMMISKEY/C ZALDIVAR	29-MAR-12	

POWER CONNECTIONS								
SKU	VOLTAGE	FREQUENCY	MCA	MOP	FLA	(COMPRESSOR)		POWER (KW)
						LRA	RLA	
ACRD200	208-230V	60HZ	25	40	N/A	87.50	16.00	4.6
ACRD201	220-240V	50HZ	N/A	N/A	21	97.00	16.00	4.4

NOTE: ABOVE DATA IS BASED ON MAXIMUM OPERATING CONDITIONS.

INSTALLATION MUST COMPLY WITH NATIONAL AND/OR LOCAL ELECTRICAL CODES.

MCA - MINIMUM CIRCUIT AMPACITY

MOP - MAXIMUM OVERCURRENT PROTECTION

LRA - LOCKED ROTOR AMPS

RLA - COMPRESSOR RATED LOAD AMPS.

FLA - FULL LOAD AMPS

PIPING CONNECTIONS		
CONNECTION	TYPE	ACRD200-201
FLUID INPUT	BRAZED*	7/8" OD COPPER
FLUID RETURN	BRAZED*	7/8" OD COPPER
CONDENSATE DRAIN		3/16" ID 5/16" OD
* USE THE PROVIDED GASKETS TO PREVENT LEAKAGE.		

NOTES:

1. INSTALLATION SHALL COMPLY WITH ALL APPLICABLE NATIONAL, STATE AND LOCAL ELECTRICAL REGULATIONS.
2. PLEASE REFER TO PRODUCT MANUALS FOR ADDITIONAL DETAILS PRIOR TO INSTALLATION AND SITE PREPARATION WORK.

THIS DRAWING AND SPECIFICATIONS HEREIN ARE THE PROPERTY OF SCHNEIDER ELECTRIC AND SHALL NOT BE COPIED, REPRODUCED OR USED IN WHOLE OR IN PART, AS THE BASIS FOR THE MANUFACTURE OR SALE OF ITEMS WITHOUT WRITTEN PERMISSION FROM SCHNEIDER ELECTRIC. THIS DRAWING IS BASED UPON LATEST AVAILABLE INFORMATION AND IS SUBJECT TO CHANGE WITHOUT NOTICE.



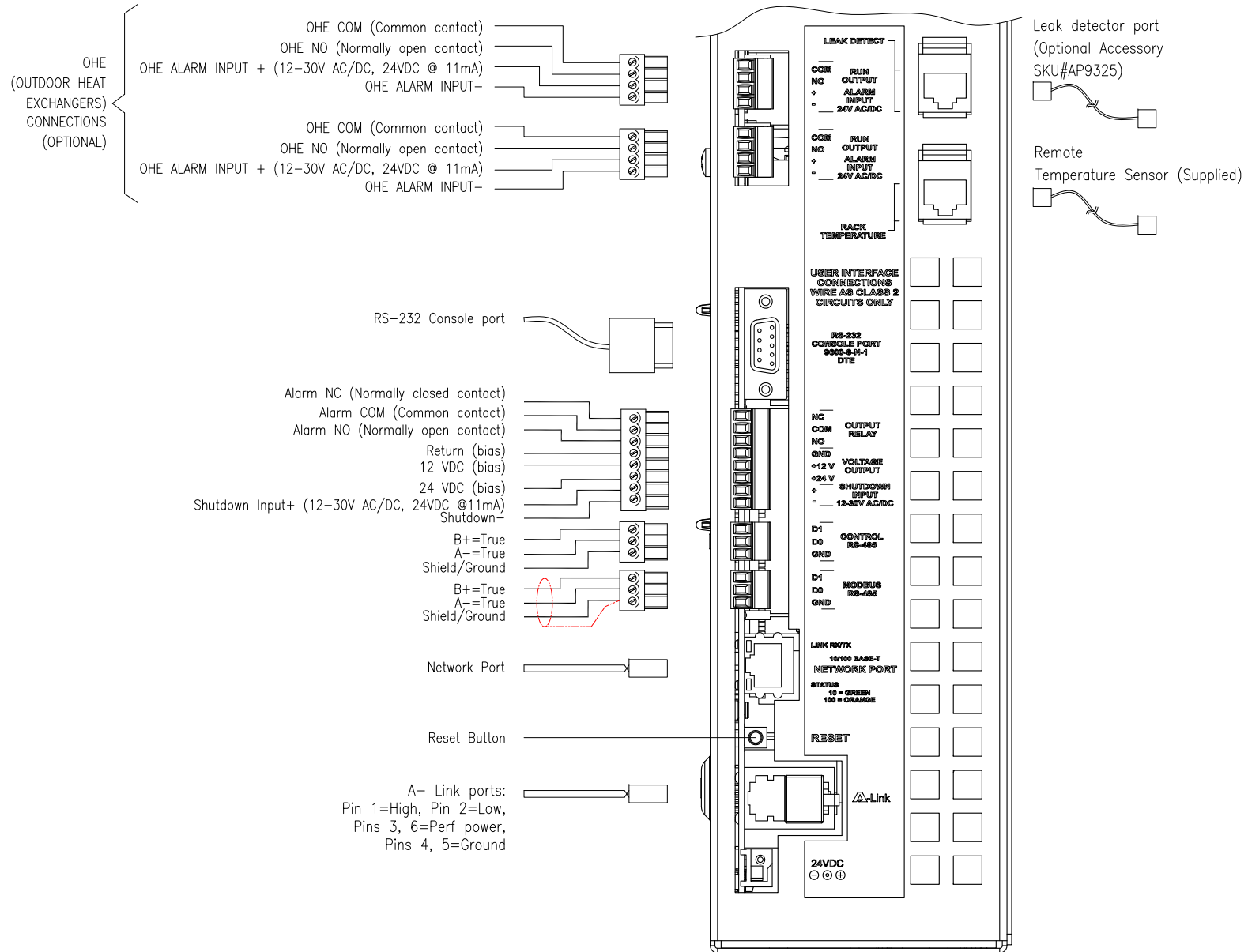
TITLE: InRow DIRECT EXPANSION
InRow RD, 300mm, FLUID COOLED
ACRD200 : 208 - 230V, 60 Hz
ACRD201 : 220 - 240V, 50 Hz
CONNECTION OVERVIEW

DWG NO: ACRD200-201 REV. 0

DRAWN: SURAJ P 27-JAN-12 ANGLE PROJECTION

ENGINEER: R GRANTHAN/M BROWN 29-MAR-12
APPROVED: C CUMMISKEY/C ZALDIVAR 29-MAR-12

USER INTERFACE CONNECTIONS



- NOTES:**
1. INSTALLATION SHALL COMPLY WITH ALL APPLICABLE NATIONAL, STATE AND LOCAL ELECTRICAL REGULATIONS.
 2. PLEASE REFER TO PRODUCT MANUALS FOR ADDITIONAL DETAILS PRIOR TO INSTALLATION AND SITE PREPARATION WORK.

THIS DRAWING AND SPECIFICATIONS HEREIN ARE THE PROPERTY OF SCHNEIDER ELECTRIC AND SHALL NOT BE COPIED, REPRODUCED OR USED IN WHOLE OR IN PART, AS THE BASIS FOR THE MANUFACTURE OR SALE OF ITEMS WITHOUT WRITTEN PERMISSION FROM SCHNEIDER ELECTRIC. THIS DRAWING IS BASED UPON LATEST AVAILABLE INFORMATION AND IS SUBJECT TO CHANGE WITHOUT NOTICE.

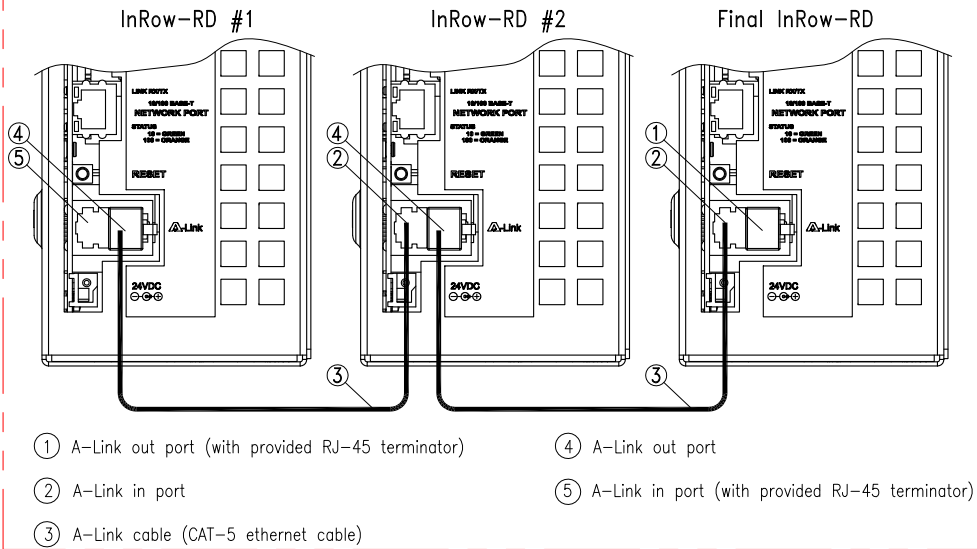


TITLE: InRow DIRECT EXPANSION
InRow RD, 300mm, FLUID COOLED
ACRD200 : 208 - 230V, 60 Hz
ACRD201 : 220 - 240V, 50 Hz
USER INTERFACE

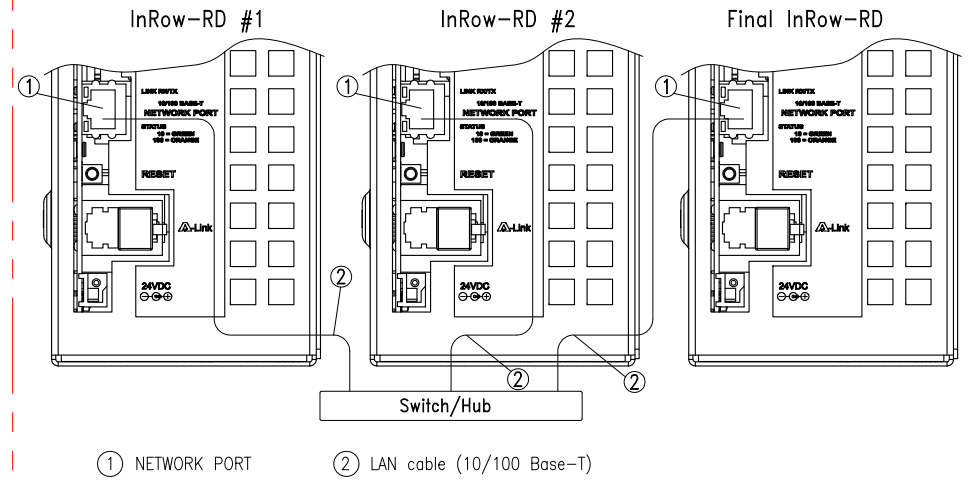
PROJECT: DRAWINGS **SHEET** 11 OF 13

DWG NO: ACRD200-201	REV: 0
DRAWN: SURAJ P	27-JAN-12
ENGINEER: R GRANTHAN/M BROWN	29-MAR-12
APPROVED: C CUMMISKEY/C ZALDIVAR	29-MAR-12
ANGLE PROJECTION:	1/1

A-LINK CONNECTIONS

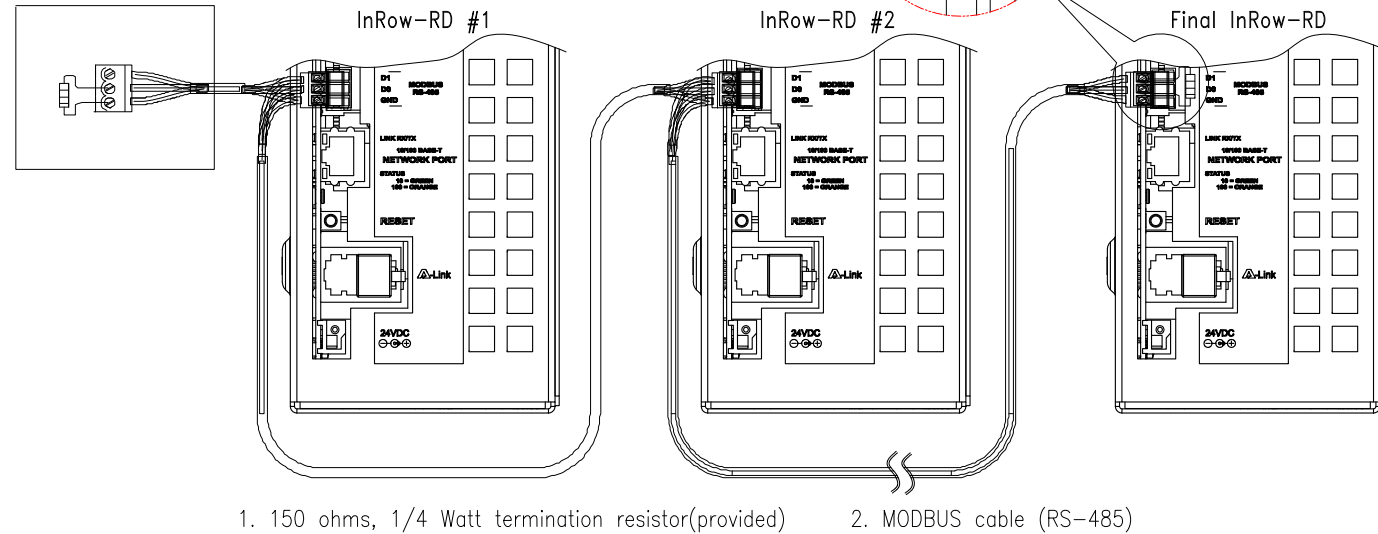


NETWORK PORT CONNECTIONS



BUILDING MANAGEMENT SYSTEM

ModBus MASTER



- NOTES:
1. INSTALLATION SHALL COMPLY WITH ALL APPLICABLE NATIONAL, STATE AND LOCAL ELECTRICAL REGULATIONS.
 2. PLEASE REFER TO PRODUCT MANUALS FOR ADDITIONAL DETAILS PRIOR TO INSTALLATION AND SITE PREPARATION WORK.

THIS DRAWING AND SPECIFICATIONS HEREIN ARE THE PROPERTY OF SCHNEIDER ELECTRIC AND SHALL NOT BE COPIED, REPRODUCED OR USED IN WHOLE OR IN PART, AS THE BASIS FOR THE MANUFACTURE OR SALE OF ITEMS WITHOUT WRITTEN PERMISSION FROM SCHNEIDER ELECTRIC. THIS DRAWING IS BASED UPON LATEST AVAILABLE INFORMATION AND IS SUBJECT TO CHANGE WITHOUT NOTICE.

Schneider Electric

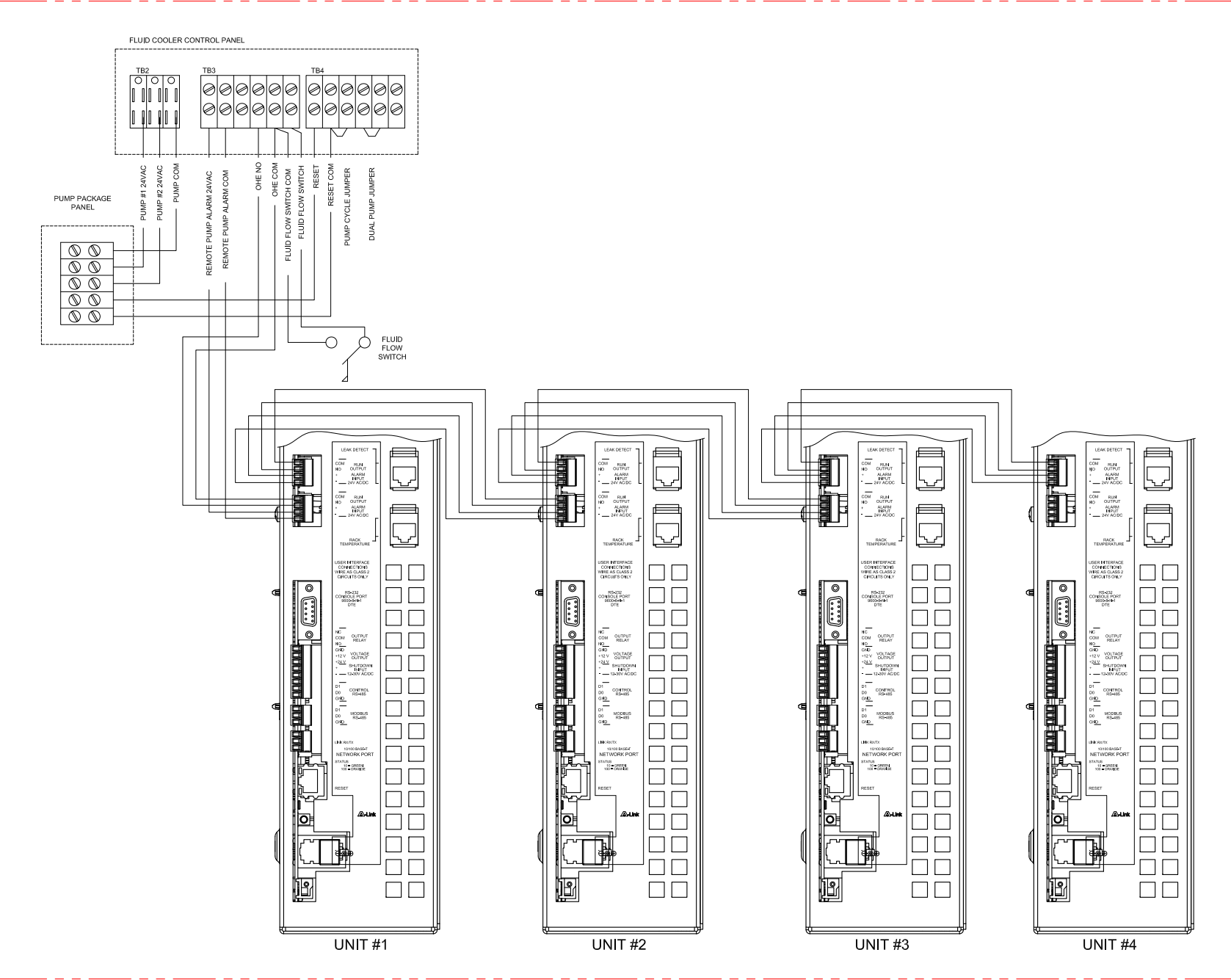
TITLE: InRow DIRECT EXPANSION
 InRow RD, 300mm, FLUID COOLED
 ACRD200 : 208 - 230V, 60 Hz
 ACRD201 : 220 - 240V, 50 Hz
 CONTROL WIRING - 1

PROJECT: DRAWINGS SHEET 12 OF 13

DWG NO: ACRD200-201 REV. 0

DRAWN: SURAJ P	27-JAN-12	ANGLE PROJECTION
ENGINEER: R GRANTHAN/M BROWN	29-MAR-12	
APPROVED: C CUMMISKEY/C ZALDIVAR	29-MAR-12	

CONTROL WIRING



- NOTES:**
1. INSTALLATION SHALL COMPLY WITH ALL APPLICABLE NATIONAL, STATE AND LOCAL ELECTRICAL REGULATIONS.
 2. PLEASE REFER TO PRODUCT MANUALS FOR ADDITIONAL DETAILS PRIOR TO INSTALLATION AND SITE PREPARATION WORK.
 3. ACRD PROVIDES A DRY CONTACT CLOSURE FOR REMOTE OPERATION OF FLUID COOLER.
 4. GROUPING OF UNITS DEPENDS ON CAPACITY OF FLUID COOLER.

THIS DRAWING AND SPECIFICATIONS HEREIN ARE THE PROPERTY OF SCHNEIDER ELECTRIC AND SHALL NOT BE COPIED, REPRODUCED OR USED IN WHOLE OR IN PART, AS THE BASIS FOR THE MANUFACTURE OR SALE OF ITEMS WITHOUT WRITTEN PERMISSION FROM SCHNEIDER ELECTRIC. THIS DRAWING IS BASED UPON LATEST AVAILABLE INFORMATION AND IS SUBJECT TO CHANGE WITHOUT NOTICE.



TITLE: InRow DIRECT EXPANSION
InRow RD, 300mm, FLUID COOLED
ACRD200 : 208 - 230V, 60 Hz
ACRD201 : 220 - 240V, 50 Hz
CONTROL WIRING - 2

DWG NO: ACRD200-201

DRAWN: SURAJ P
ENGINEER: R GRANTHAN/M BROWN
APPROVED: C CUMMISKEY/C ZALDIVAR

REV: 0
ANGLE PROJECTION: