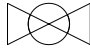

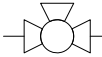

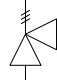

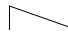


ACRD100-101 - In Row-RD, Air Cooled

Sheet No.	Component /Detail	Description
1	Draw ing Guide	ACRD100-101, 208-230V 60 Hz, 220-240V 50 Hz Air Cooled, Draw ing guide.
2	Isometric External View	ACRD100-101, 208-230V 60 Hz, 220-240V 50 Hz Air Cooled, Isometric External View .
3	General Arrangement	ACRD100-101, 208-230V 60 Hz, 220-240V 50 Hz Air Cooled, General Arrangement.
4	Top & Bottom View	ACRD100-101, 208-230V 60 Hz, 220-240V 50 Hz Air Cooled, Top & Bottom View
5	Anchoring Details	ACRD100-101, 208-230V 60 Hz, 220-240V 50 Hz Air Cooled, Anchoring Details.
6	Isometric Internal View	ACRD100-101, 208-230V 60 Hz, 220-240V 50 Hz Air Cooled, Isometric Internal view .
7	Internal View	ACRD100-101, 208-230V 60 Hz, 220-240V 50 Hz Air Cooled, Internal view .
8	Piping Connections	ACRD100-101, 208-230V 60 Hz, 220-240V 50 Hz Air Cooled, Piping Connections.
9	Piping Diagram	ACRD100-101, 208-230V 60 Hz, 220-240V 50 Hz Air Cooled, Piping Diagram.
10	Electrical Piping Data	ACRD100-101, 208-230V 60 Hz, 220-240V 50 Hz Air Cooled, Electrical Piping Data.
11	User Interface	ACRD100-101, 208-230V 60 Hz, 220-240V 50 Hz Air Cooled, User Interface.

LEGEND			
SYMBOL	DESCRIPTION	SYMBOL	DESCRIPTION
	SHUT OFF VALVE		P-Trap
	HEAD PRESSURE CONTROL VALVE		S-Trap
	PRESSURE RELIEF VALVE		Inverted Trap
	CHECK VALVE		

THIS DRAWING AND SPECIFICATIONS HEREIN ARE THE PROPERTY OF SCHNEIDER ELECTRIC AND SHALL NOT BE COPIED, REPRODUCED OR USED IN WHOLE OR IN PART, AS THE BASIS FOR THE MANUFACTURE OR SALE OF ITEMS WITHOUT WRITTEN PERMISSION FROM SCHNEIDER ELECTRIC. THIS DRAWING IS BASED UPON LATEST AVAILABLE INFORMATION AND IS SUBJECT TO CHANGE WITHOUT NOTICE.

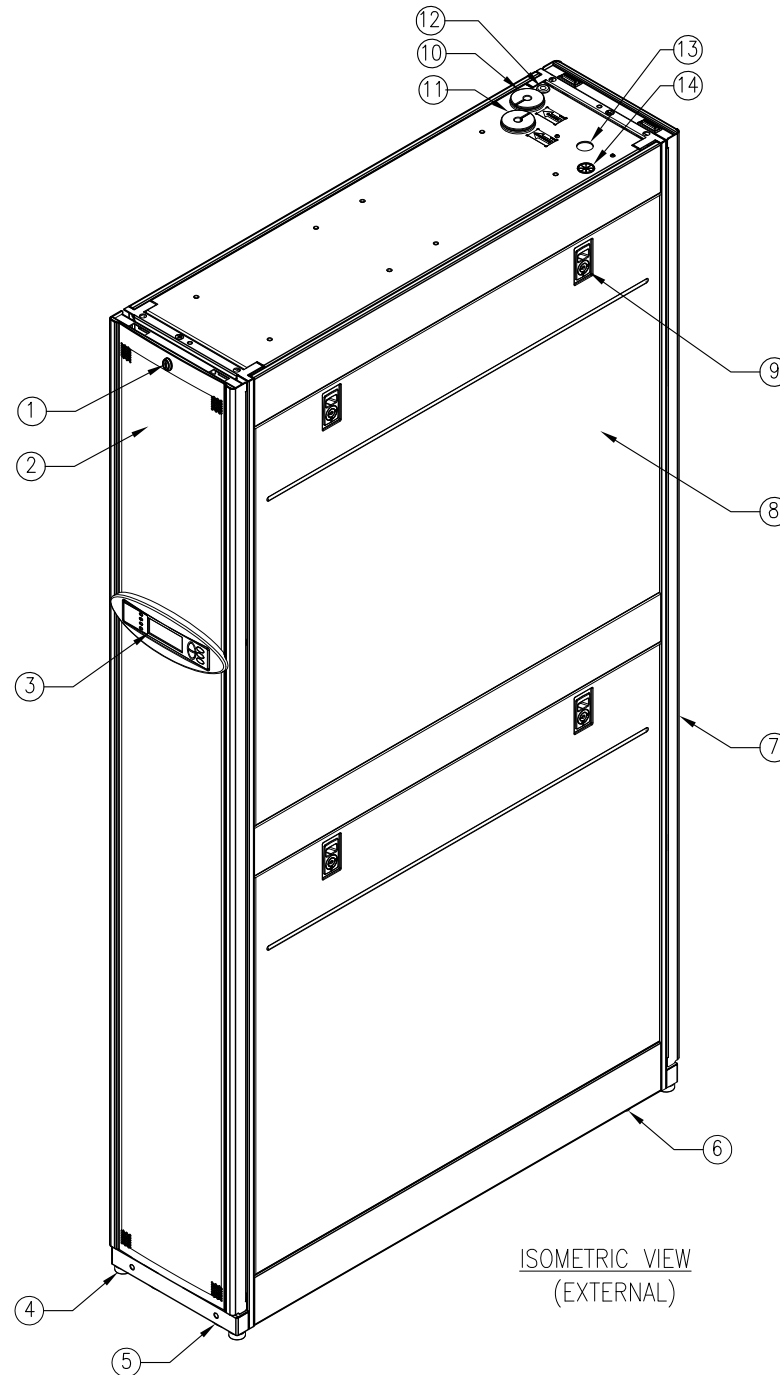


TITLE: InRow DIRECT EXPANSION
InRow RD, 300mm, AIR COOLED
ACRD100 : 208 - 230V, 60 Hz
ACRD101 : 220 - 240V, 50 Hz
DRAWING GUIDE

PROJECT: DRAWINGS SHEET 1 OF 12

DWG NO:	ACRD100-101		REV.	0
DRAWN:	SURAJ P	27-JAN-12	ANGLE	PROJECTION:
ENGINEER:	R GRANTHAN/M BROWN	29-MAR-12		
APPROVED:	C CUMMSKEY/C ZALDVAR	29-MAR-12		N/A

- ① DOOR LOCK (FRONT & REAR)
- ② FRONT DOOR (REMOVABLE)
- ③ DISPLAY INTERFACE
- ④ ADJUSTABLE LEVELING FOOT
- ⑤ FRONT CASTERS (SWIVELING)
- ⑥ REAR CASTERS (NON-SWIVELING)
- ⑦ REAR DOOR (REMOVABLE)
- ⑧ SIDE PANEL (REMOVABLE)
- ⑨ SIDE PANEL LATCH/LOCK
- ⑩ LIQUID LINE
- ⑪ DISCHARGE (HOT GAS) LINE
- ⑫ CONDENSATE PUMP OUTLET
- ⑬ ELECTRICAL POWER INPUT
- ⑭ LOW VOLTAGE WIRING INPUT



ISOMETRIC VIEW
(EXTERNAL)

NOTES:

1. INSTALLATION SHALL COMPLY WITH ALL APPLICABLE NATIONAL, STATE AND LOCAL ELECTRICAL REGULATIONS.
2. PLEASE REFER TO PRODUCT MANUALS FOR ADDITIONAL DETAILS PRIOR TO INSTALLATION AND SITE PREPARATION WORK.

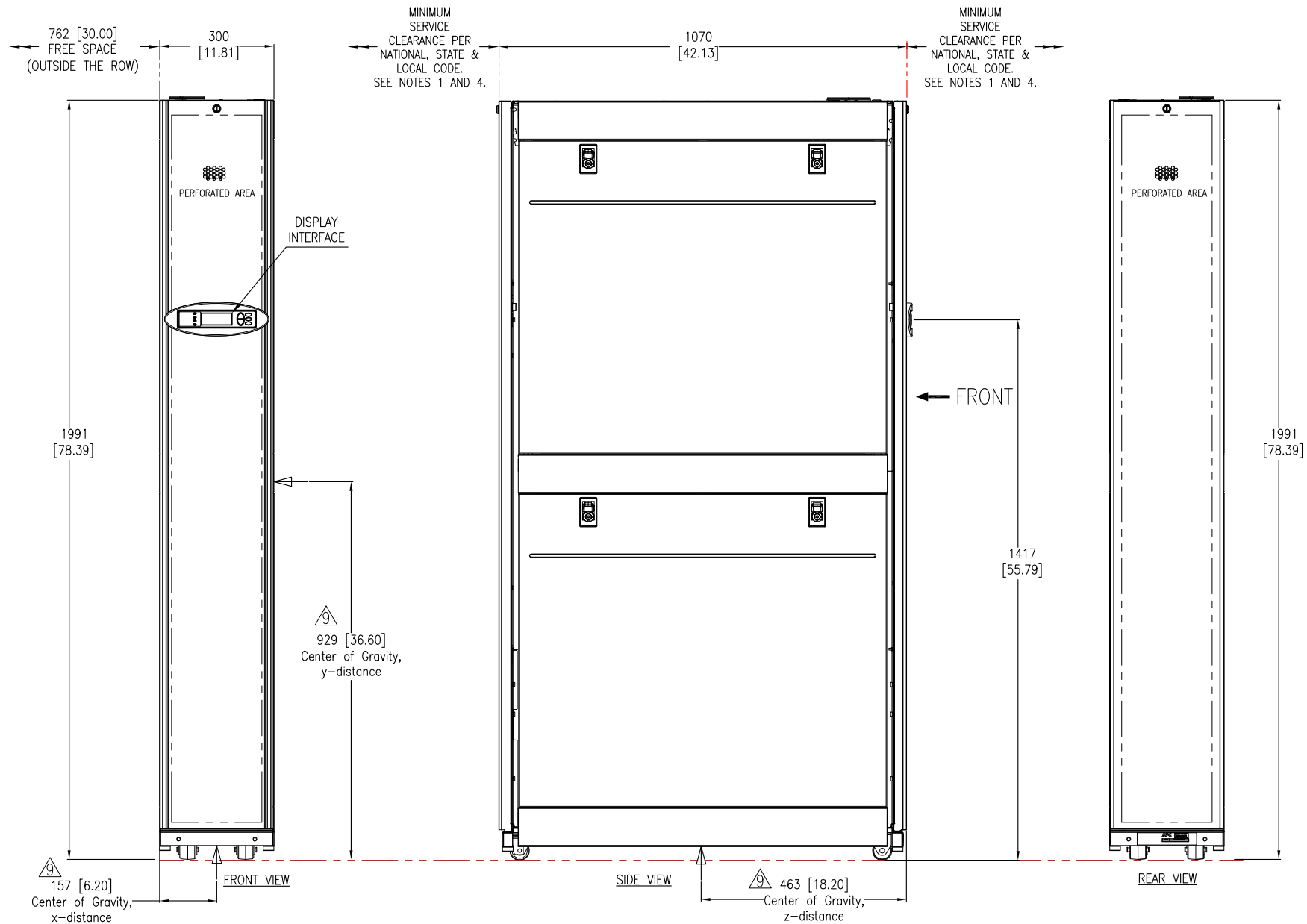
THIS DRAWING AND SPECIFICATIONS HEREIN ARE THE PROPERTY OF SCHNEIDER ELECTRIC AND SHALL NOT BE COPIED, REPRODUCED OR USED IN WHOLE OR IN PART, AS THE BASIS FOR THE MANUFACTURE OR SALE OF ITEMS WITHOUT WRITTEN PERMISSION FROM SCHNEIDER ELECTRIC. THIS DRAWING IS BASED UPON LATEST AVAILABLE INFORMATION AND IS SUBJECT TO CHANGE WITHOUT NOTICE.



TITLE: InRow DIRECT EXPANSION
InRow RD, 300mm, AIR COOLED
ACRD100 : 208 - 230V, 60 Hz
ACRD101 : 220 - 240V, 50 Hz
ISOMETRIC EXTERNAL VIEW

DWG NO: ACRD100-101 REV. 0

DRAWN: SURAJ P	27-JAN-12	ANGLE
ENGINEER: R GRANTHAN/M BROWN	29-MAR-12	PROJECTION:
APPROVED: C CUMMISKEY/C ZALDIVAR	29-MAR-12	N/A



NOTES:

1. INSTALLATION SHALL COMPLY WITH ALL APPLICABLE NATIONAL, STATE AND LOCAL ELECTRICAL REGULATIONS.
2. PLEASE REFER TO PRODUCT MANUALS FOR ADDITIONAL DETAILS PRIOR TO INSTALLATION AND SITE PREPARATION WORK.
3. UNLESS OTHERWISE SPECIFIED, ALL DIMENSIONS ARE IN MILLIMETERS [INCHES].
4. A MINIMUM OF 1200 mm [48"] CLEARANCE IS REQUIRED IN FRONT OR REAR OF THE ACRD UNIT IF THE UNIT HAS TO BE REMOVED FROM THE ROW.
5. PIPING CONFIGURATION – TOP OR BOTTOM OF UNIT.
6. FRONT AND REAR ACCESS IS REQUIRED FOR SERVICE.
7. MAXIMUM WEIGHT OF UNIT IS 183 kg [404 lb].
8. FLOOR LOADING: 573 kg/meter² [117 lb/ft²].
- △9. THIS INFORMATION PROVIDED CONSERVATIVE CENTER OF GRAVITY CALCULATION.
10. THE AIR COOLED EQUIPMENT HAS BEEN DE-HYDRATED AT THE FACTORY AND SHIPPED WITH HOLDING CHARGE OF 207KPA [30 PSIG] OF NITROGEN.

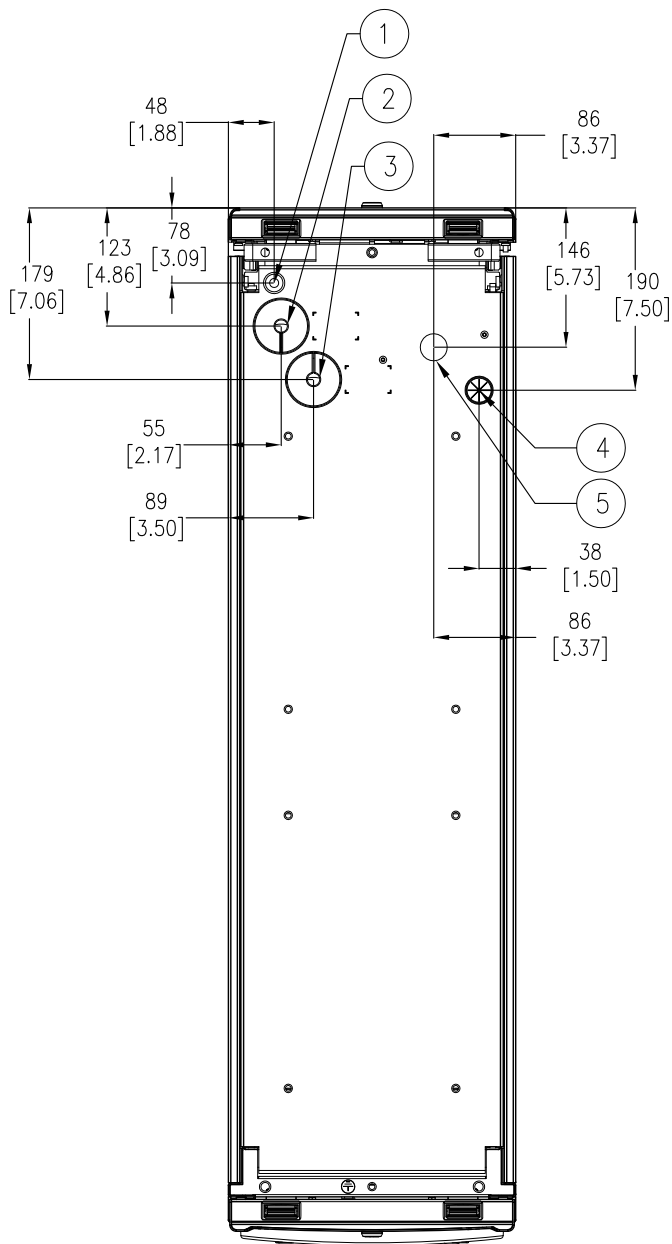
THIS DRAWING AND SPECIFICATIONS HEREIN ARE THE PROPERTY OF SCHNEIDER ELECTRIC AND SHALL NOT BE COPIED, REPRODUCED OR USED IN WHOLE OR IN PART, AS THE BASIS FOR THE MANUFACTURE OR SALE OF ITEMS WITHOUT WRITTEN PERMISSION FROM SCHNEIDER ELECTRIC. THIS DRAWING IS BASED UPON LATEST AVAILABLE INFORMATION AND IS SUBJECT TO CHANGE WITHOUT NOTICE.



TITLE: InRow DIRECT EXPANSION
InRow RD, 300mm, AIR COOLED
ACRD100 : 208 - 230V, 60 Hz
ACRD101 : 220 - 240V, 50 Hz
GENERAL ARRANGEMENT

DWG NO: ACRD100-101 REV. 0

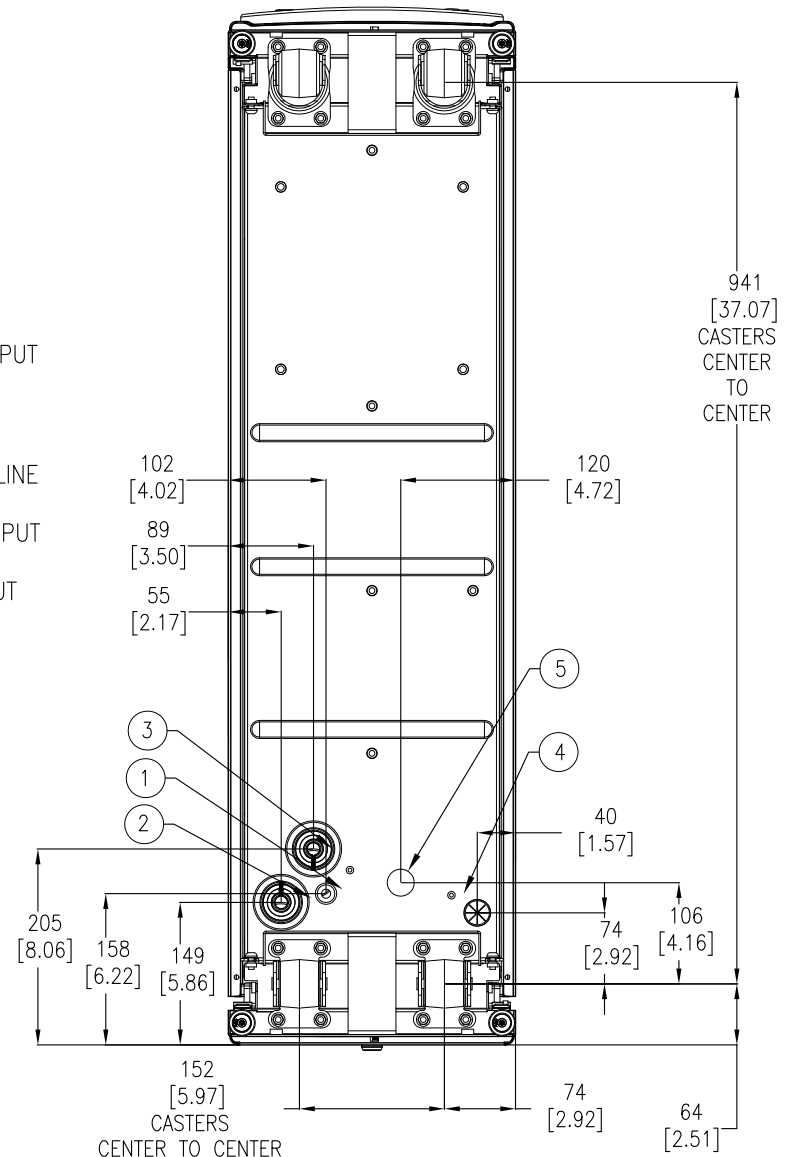
DRAWN: SURAJ P	27-JAN-12	FIRST ANGLE PROJECTION
ENGINEER: R GRANTHAN/M BROWN	29-MAR-12	
APPROVED: C CUMMISKEY/C ZALDIVAR	29-MAR-12	



TOP VIEW

(PIPING & POWER FEED LOCATIONS FOR TOP ENTRY)

- ① CONDENSATE PUMP OUTPUT
- ② LIQUID LINE
- ③ DISCHARGE (HOT GAS) LINE
- ④ LOW VOLTAGE WIRING INPUT
- ⑤ ELECTRICAL POWER INPUT



BOTTOM VIEW

(PIPING & POWER FEED LOCATIONS FOR BOTTOM ENTRY)

- NOTES:
1. INSTALLATION SHALL COMPLY WITH ALL APPLICABLE NATIONAL, STATE AND LOCAL ELECTRICAL REGULATIONS.
 2. PLEASE REFER TO PRODUCT MANUALS FOR ADDITIONAL DETAILS PRIOR TO INSTALLATION AND SITE PREPARATION WORK.
 3. UNLESS OTHERWISE SPECIFIED, ALL DIMENSIONS ARE IN MILLIMETERS [INCHES].

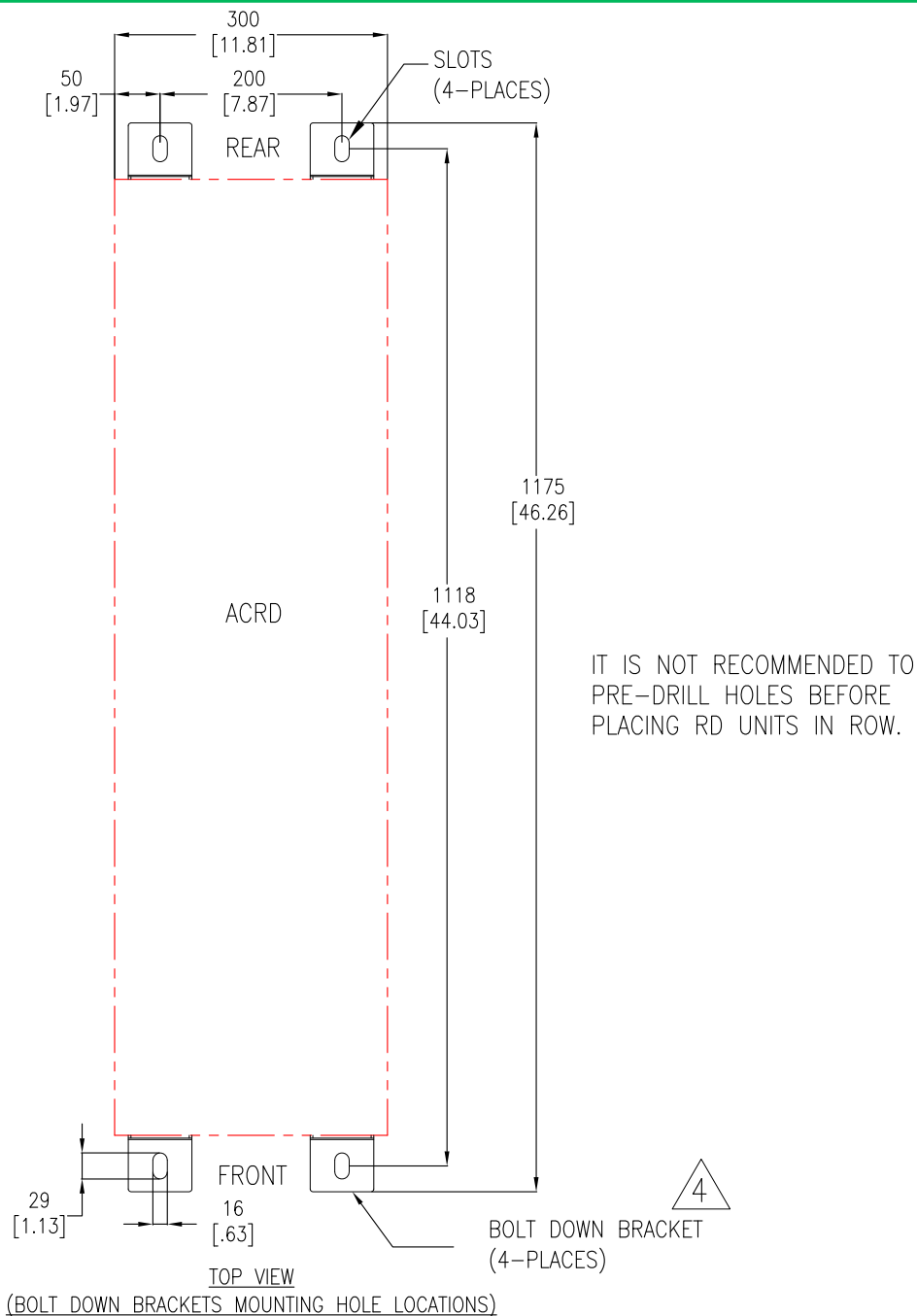
THIS DRAWING AND SPECIFICATIONS HEREIN ARE THE PROPERTY OF SCHNEIDER ELECTRIC AND SHALL NOT BE COPIED, REPRODUCED OR USED IN WHOLE OR IN PART, AS THE BASIS FOR THE MANUFACTURE OR SALE OF ITEMS WITHOUT WRITTEN PERMISSION FROM SCHNEIDER ELECTRIC. THIS DRAWING IS BASED UPON LATEST AVAILABLE INFORMATION AND IS SUBJECT TO CHANGE WITHOUT NOTICE.



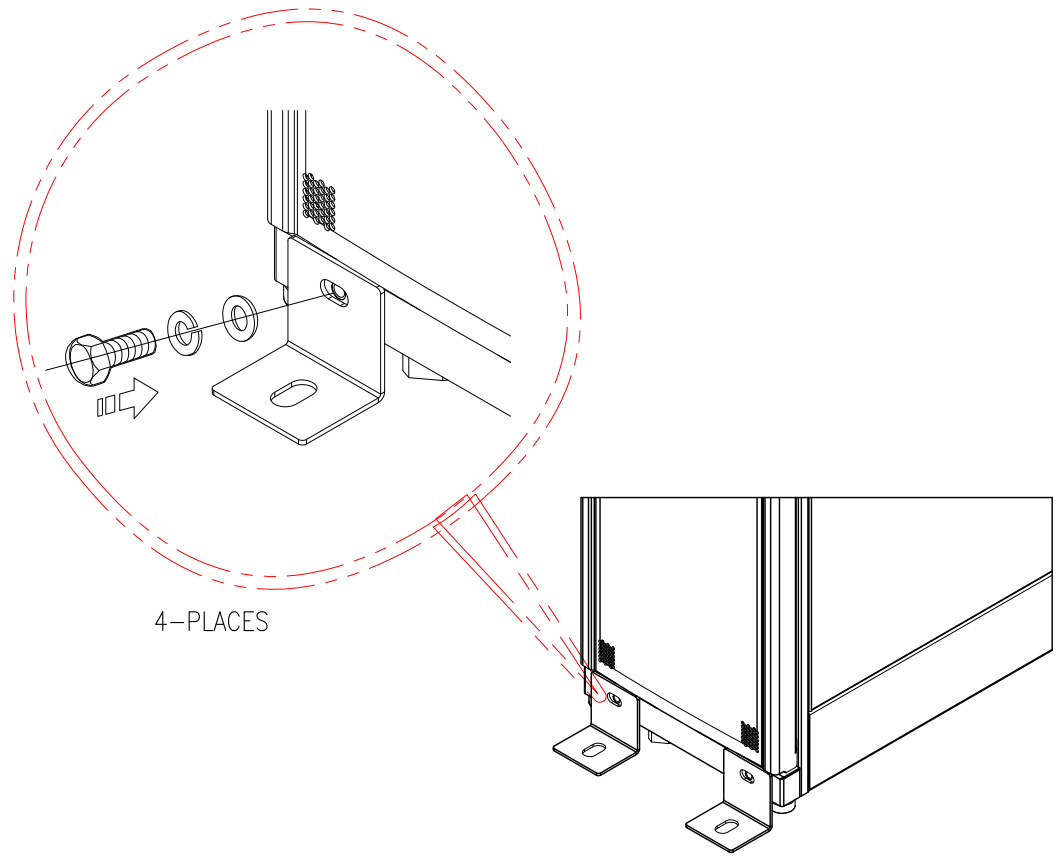
TITLE: InRow DIRECT EXPANSION
InRow RD, 300mm, AIR COOLED
ACRD100 : 208 - 230V, 60 Hz
ACRD101 : 220 - 240V, 50 Hz
TOP VIEW & BOTTOM VIEW

PROJECT: DRAWINGS SHEET 4 OF 12

DWG NO:	ACRD100-101	REV:	0
DRAWN:	SURAJ P	27-JAN-12	FIRST ANGLE PROJECTION
ENGINEER:	R GRANTHAN/M BROWN	29-MAR-12	
APPROVED:	C CUMMISKEY/C ZALDIVAR	29-MAR-12	

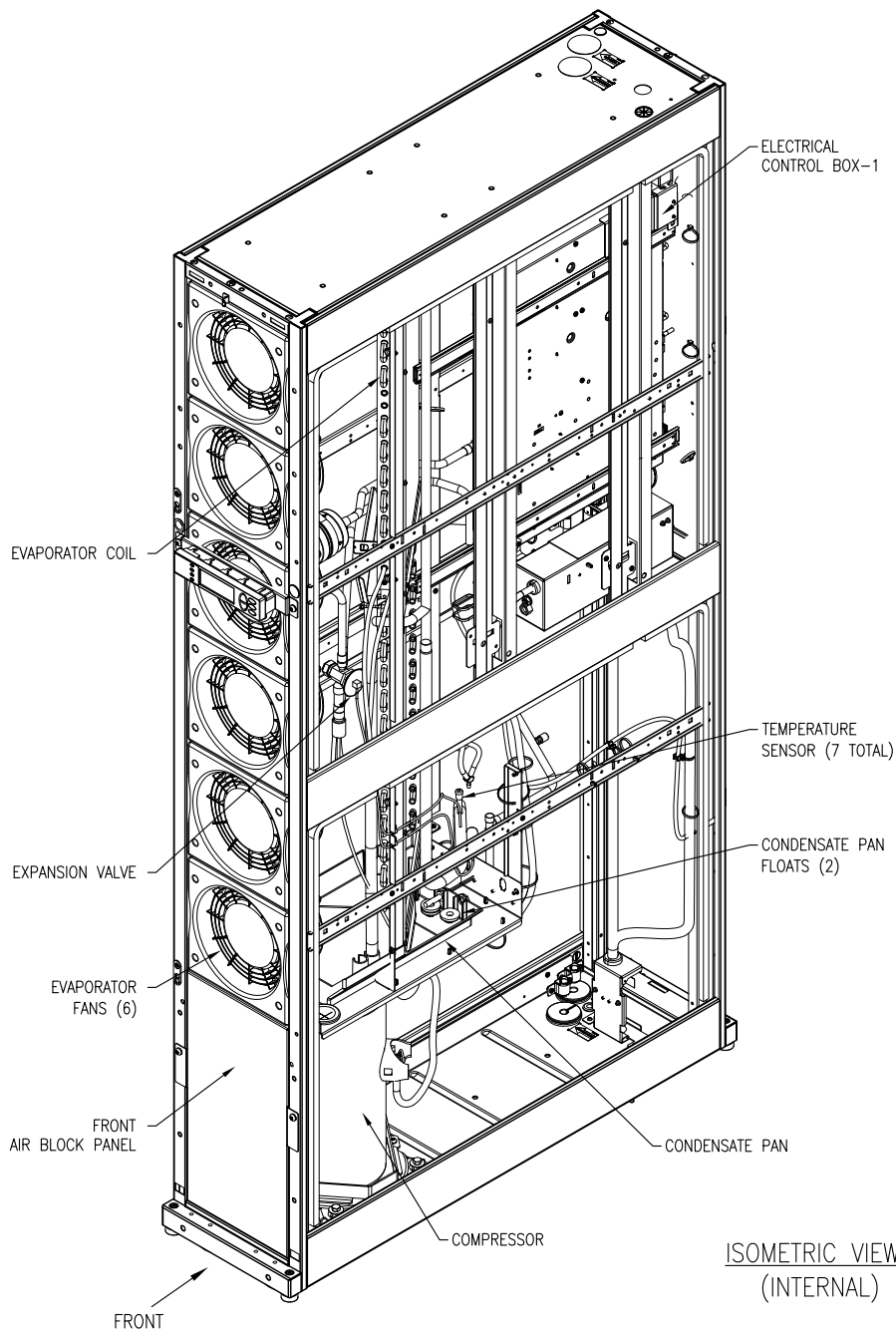


STABILIZING THE InRow RD:
TO PREVENT THE ENCLOSURE FROM MOVING FROM ITS FINAL LOCATION (IF NOT BAYED TO ANOTHER DEVICE), USE AR7701(BOLT-DOWN KIT) WHICH IS INCLUDED IN THE SHIP LOOSE PARTS KIT. ATTACH THE BRACKETS TO THE UNIT AS SHOWN. USE CODE COMPLIANT FASTENERS TO SECURE THE UNIT TO THE FLOOR.

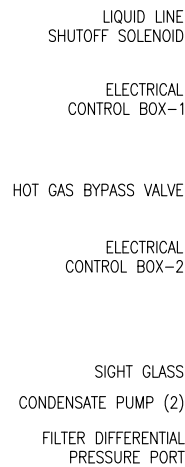


- NOTES:
1. INSTALLATION SHALL COMPLY WITH ALL APPLICABLE NATIONAL, STATE AND LOCAL ELECTRICAL REGULATIONS.
 2. PLEASE REFER TO PRODUCT MANUALS FOR ADDITIONAL DETAILS PRIOR TO INSTALLATION AND SITE PREPARATION WORK.
 3. UNLESS OTHERWISE SPECIFIED, ALL DIMENSIONS ARE IN MILLIMETERS [INCHES].
 - △4. BOLT DOWN KIT (#AR7701) IS OPTIONAL AND HAS TO BE ORDERED SEPARATELY.
 5. REFER TO "InfraStruXure InRow-RD SEISMIC INSTALLATION GUIDE" FOR SEISMIC ANCHORING GUIDELINES.

THIS DRAWING AND SPECIFICATIONS HEREIN ARE THE PROPERTY OF SCHNEIDER ELECTRIC AND SHALL NOT BE COPIED, REPRODUCED OR USED IN WHOLE OR IN PART, AS THE BASIS FOR THE MANUFACTURE OR SALE OF ITEMS WITHOUT WRITTEN PERMISSION FROM SCHNEIDER ELECTRIC. THIS DRAWING IS BASED UPON LATEST AVAILABLE INFORMATION AND IS SUBJECT TO CHANGE WITHOUT NOTICE.		TITLE: InRow DIRECT EXPANSION InRow RD, 300mm, AIR COOLED ACRD100 : 208 - 230V, 60 Hz ACRD101 : 220 - 240V, 50 Hz ANCHORING DETAILS	DWG NO: ACRD100-101	REV: 0
		PROJECT: DRAWINGS SHEET 5 OF 12	DRAWN: SURAJ P 27-JAN-12	FIRST ANGLE PROJECTION
		APPROVED: C CUMMISKEY/C ZALDVAR	ENGINEER: R GRANTHAN/M BROWN 29-MAR-12	29-MAR-12



INLET/OUTLET PIPING IS STRAPPED INSIDE THE UNIT DURING TRANSIT AND IS TO BE PLACED INTO THE DESIRED CONFIGURATION DURING INSTALLATION.



ISOMETRIC VIEWS (INTERNAL)

- NOTES:
1. INSTALLATION SHALL COMPLY WITH ALL APPLICABLE NATIONAL, STATE AND LOCAL ELECTRICAL REGULATIONS.
 2. PLEASE REFER TO PRODUCT MANUALS FOR ADDITIONAL DETAILS PRIOR TO INSTALLATION AND SITE PREPARATION WORK.
 3. UNIT IS SHIPPED CONFIGURED FOR TOP ENTRY.
 4. SOME MECHANICAL COMPONENTS HAVE BEEN OMITTED FOR PURPOSE OF CLARITY.

THIS DRAWING AND SPECIFICATIONS HEREIN ARE THE PROPERTY OF SCHNEIDER ELECTRIC AND SHALL NOT BE COPIED, REPRODUCED OR USED IN WHOLE OR IN PART, AS THE BASIS FOR THE MANUFACTURE OR SALE OF ITEMS WITHOUT WRITTEN PERMISSION FROM SCHNEIDER ELECTRIC. THIS DRAWING IS BASED UPON LATEST AVAILABLE INFORMATION AND IS SUBJECT TO CHANGE WITHOUT NOTICE.



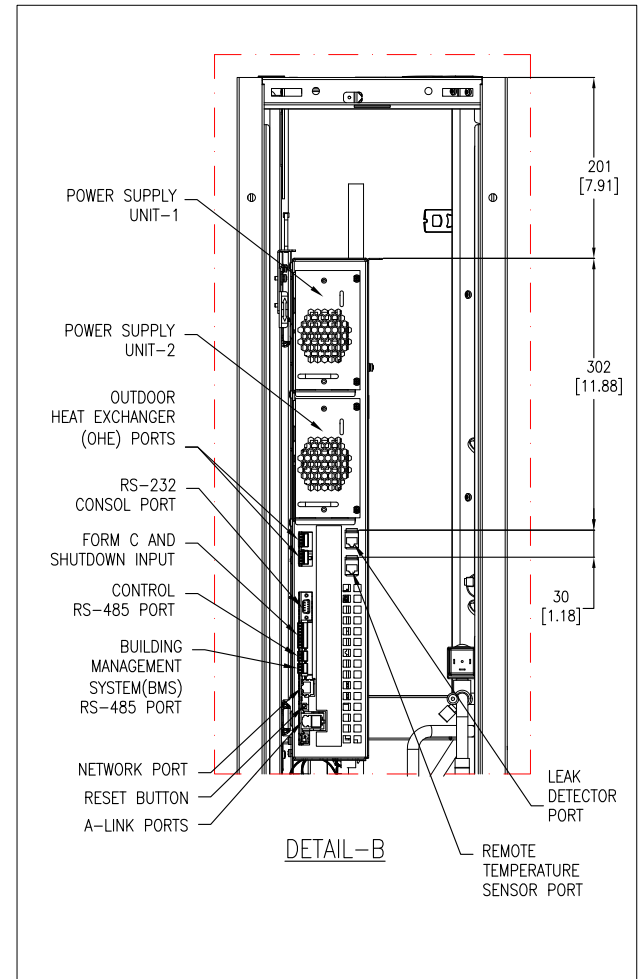
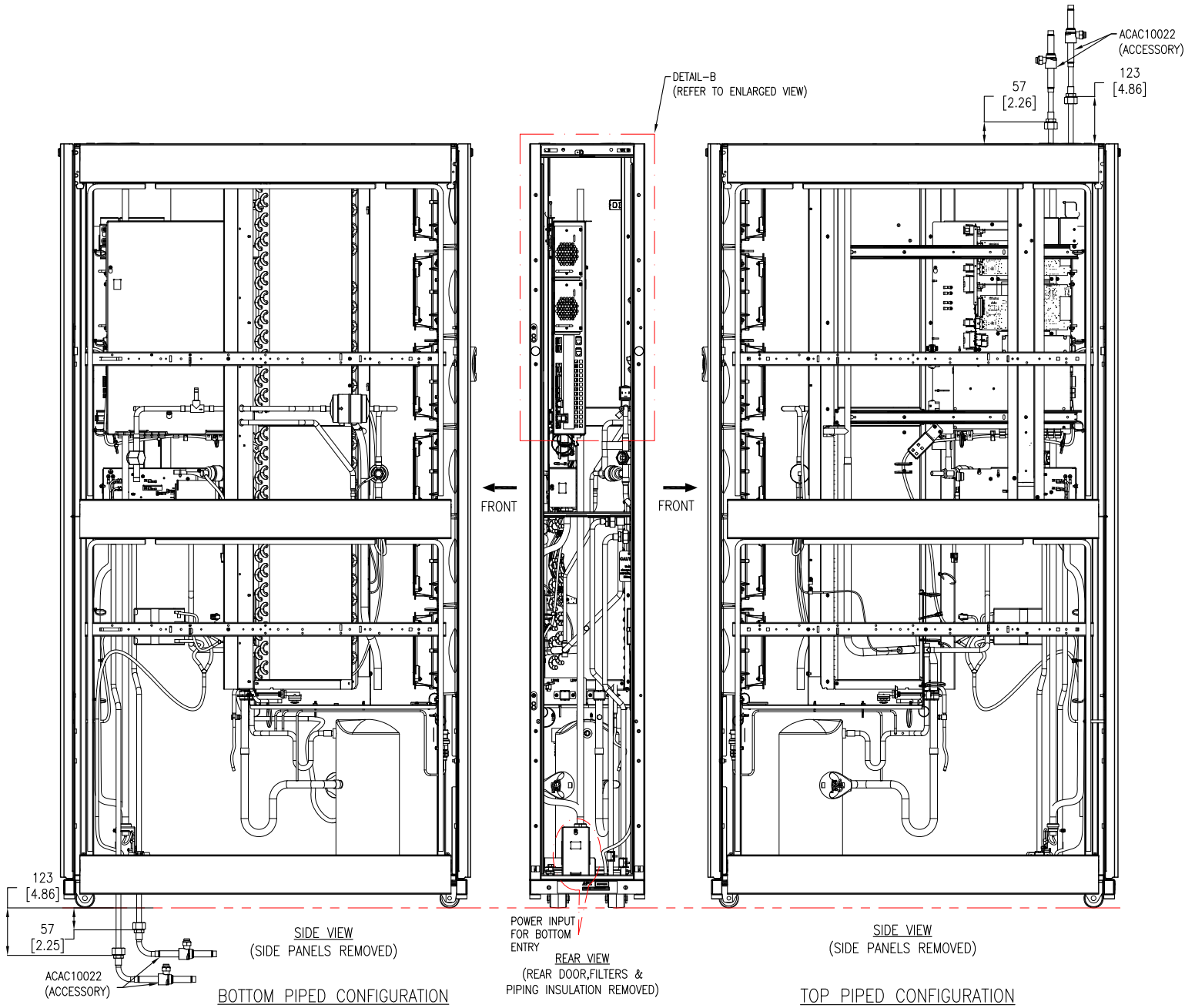
TITLE: InRow DIRECT EXPANSION
InRow RD, 300mm, AIR COOLED
ACRD100 : 208 - 230V, 60 Hz
ACRD101 : 220 - 240V, 50 Hz
ISOMETRIC INTERNAL VIEW

PROJECT: DRAWINGS SHEET 6 OF 12

DWG NO: ACRD100-101 REV. 1

DRAWN: SURAJ P/S CUNHA 26-SEP-14
ENGINEER: R GRANTHAN/M BROWN 29-MAR-12
APPROVED: C CUMMISKEY/C ZALDIVAR 29-MAR-12

ANGLE PROJECTION



NOTES:

1. INSTALLATION SHALL COMPLY WITH ALL APPLICABLE NATIONAL, STATE AND LOCAL ELECTRICAL REGULATIONS.
2. PLEASE REFER TO PRODUCT MANUALS FOR ADDITIONAL DETAILS PRIOR TO INSTALLATION AND SITE PREPARATION WORK.
3. UNLESS OTHERWISE SPECIFIED, ALL DIMENSIONS ARE IN MILLIMETERS [INCHES].
4. SOME MECHANICAL COMPONENTS HAVE BEEN OMITTED FOR PURPOSE OF CLARITY.

THIS DRAWING AND SPECIFICATIONS HEREIN ARE THE PROPERTY OF SCHNEIDER ELECTRIC AND SHALL NOT BE COPIED, REPRODUCED OR USED IN WHOLE OR IN PART, AS THE BASIS FOR THE MANUFACTURE OR SALE OF ITEMS WITHOUT WRITTEN PERMISSION FROM SCHNEIDER ELECTRIC. THIS DRAWING IS BASED UPON LATEST AVAILABLE INFORMATION AND IS SUBJECT TO CHANGE WITHOUT NOTICE.



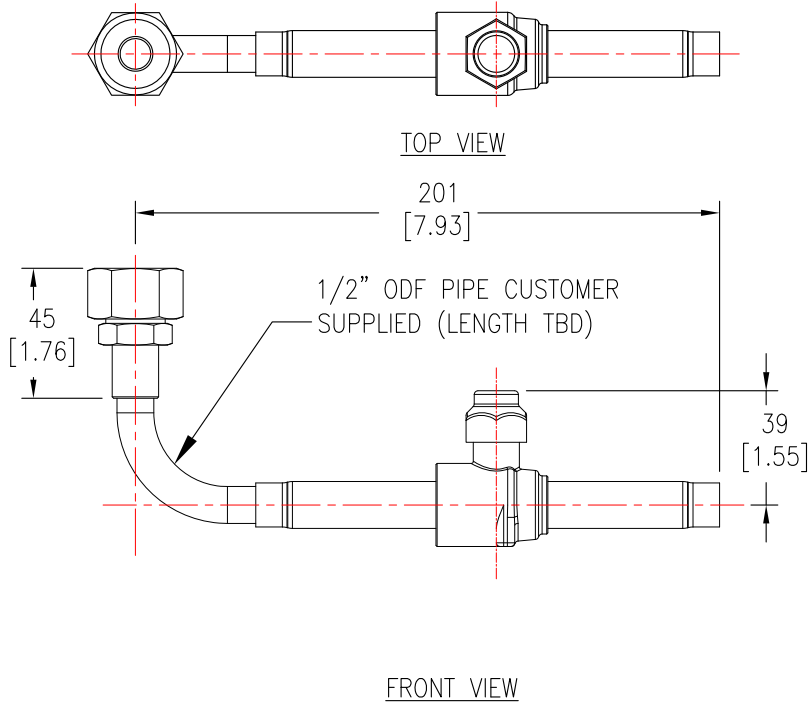
TITLE: InRow DIRECT EXPANSION
InRow RD, 300mm, AIR COOLED
ACRD100 : 208 - 230V, 60 Hz
ACRD101 : 220 - 240V, 50 Hz
INTERNAL VIEW

DWG NO: ACRD100-101 REV. 0

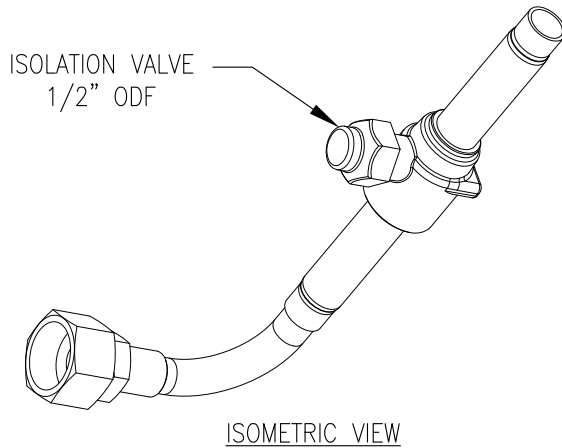
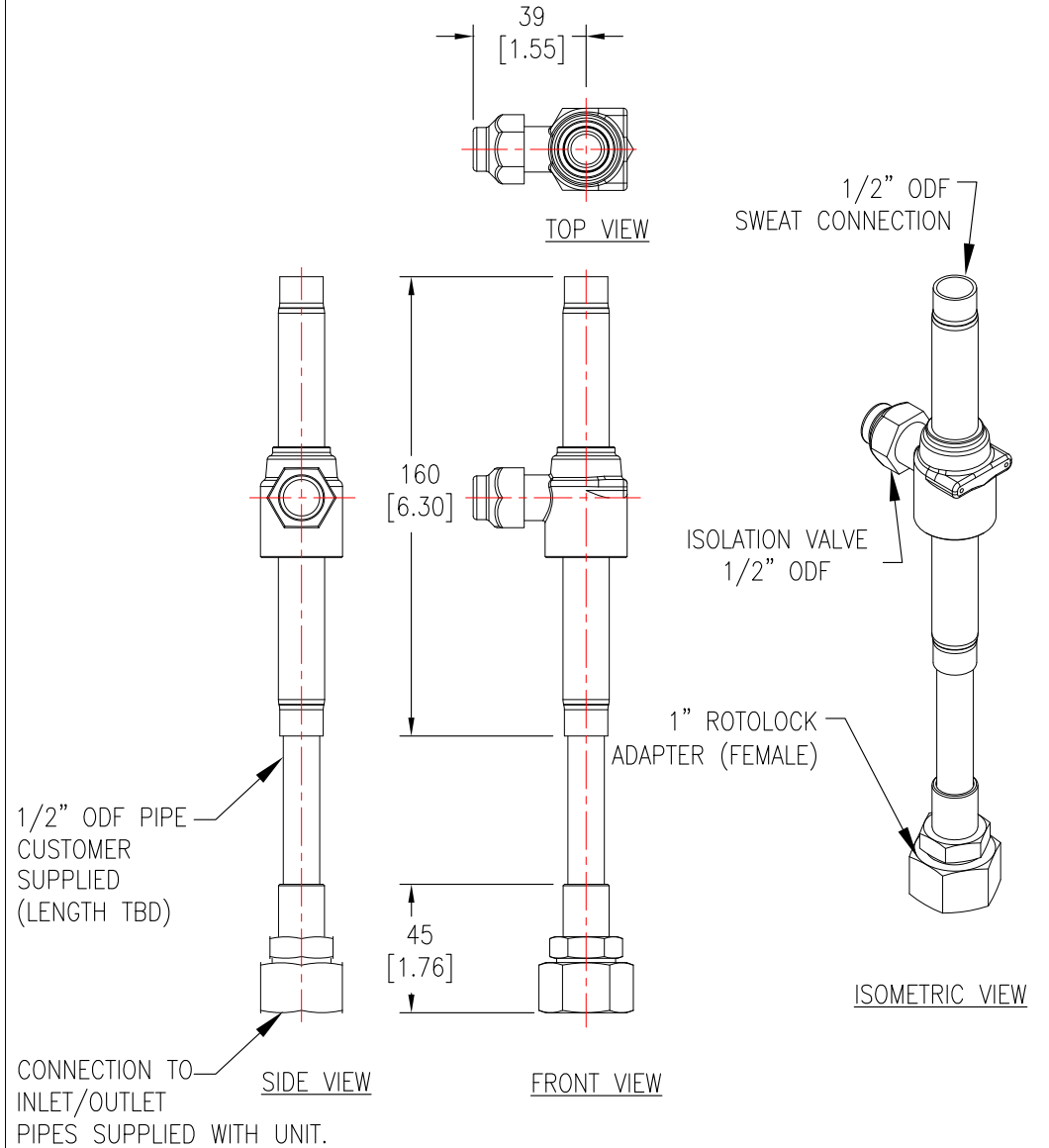
DRAWN: SURAJ P	27-JAN-12	FIRST ANGLE PROJECTION
ENGINEER: R GRANTHAN/M BROWN	29-MAR-12	
APPROVED: C CUMMISKEY/C ZALDIVAR	29-MAR-12	

ACCESSORY SKU #ACAC10022
ISOLATION BALL VALVE ASSEMBLIES

BOTTOM PIPING CONFIGURATION



TOP PIPING CONFIGURATION



- NOTES:
1. INSTALLATION SHALL COMPLY WITH ALL APPLICABLE NATIONAL, STATE AND LOCAL ELECTRICAL REGULATIONS.
 2. PLEASE REFER TO PRODUCT MANUALS FOR ADDITIONAL DETAILS PRIOR TO INSTALLATION AND SITE PREPARATION WORK.
 3. UNLESS OTHERWISE SPECIFIED, ALL DIMENSIONS ARE IN MILLIMETERS [INCHES].
 4. TEFLON O-RING (SUPPLIED) REQUIRED WITH BOTH CONFIGURATION.

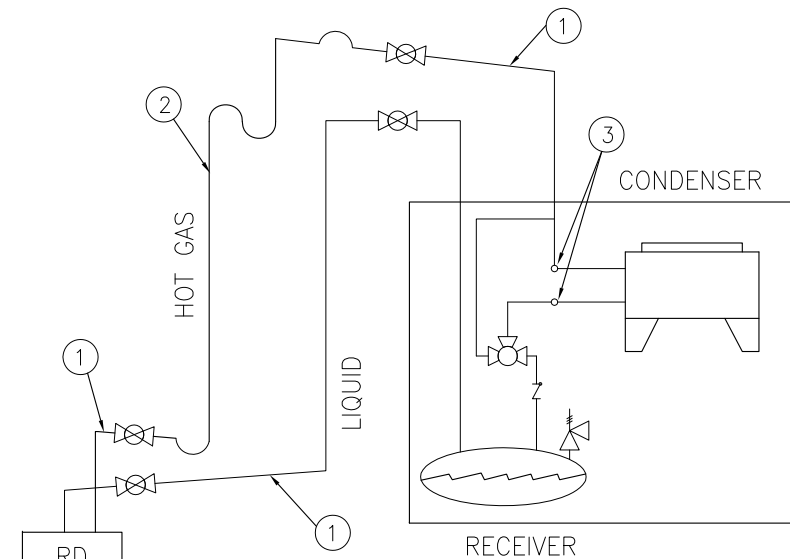
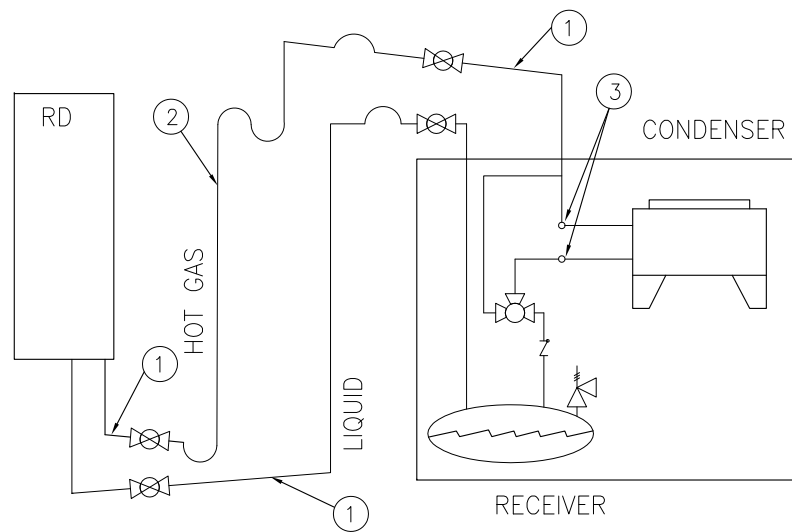
THIS DRAWING AND SPECIFICATIONS HEREIN ARE THE PROPERTY OF SCHNEIDER ELECTRIC AND SHALL NOT BE COPIED, REPRODUCED OR USED IN WHOLE OR IN PART, AS THE BASIS FOR THE MANUFACTURE OR SALE OF ITEMS WITHOUT WRITTEN PERMISSION FROM SCHNEIDER ELECTRIC. THIS DRAWING IS BASED UPON LATEST AVAILABLE INFORMATION AND IS SUBJECT TO CHANGE WITHOUT NOTICE.



TITLE: InRow DIRECT EXPANSION
InRow RD, 300mm, AIR COOLED
ACRD100 : 208 - 230V, 60 Hz
ACRD101 : 220 - 240V, 50 Hz
PIPING CONNECTIONS

PROJECT: DRAWINGS SHEET 8 OF 12

DWG NO:	ACRD100-101	REV:	0
DRAWN:	SURAJ P	27-JAN-12	FIRST ANGLE PROJECTION
ENGINEER:	R GRANTHAN/M BROWN	29-MAR-12	
APPROVED:	C CUMMISKEY/C ZALDIVAR	29-MAR-12	



①	Pitch in direction of refrigerant flow, 1/2 in per 10 ft (4mm per m)		Check valve
②	Reduction of piping diameter, for vertical run (if necessary)		P-Trap
③	Schrader Valve		S-Trap
	Shutoff valve		Inverted Trap
	Head pressure control valve		Pressure relief valve

RECOMMENDED LINE SIZES

EQUIVALENT LENGTH m (ft)	LINE TYPE	ACRD100, ACRD101(OD)
15 (50)	DISCHARGE LINE (HORIZONTAL/VERTICAL DOWN)	5/8 ACR
	DISCHARGE LINE (VERTICAL RISER)	1/2 ACR
	LIQUID LINE	1/2 ACR
30 (100)	DISCHARGE LINE (HORIZONTAL/VERTICAL DOWN)	5/8 ACR
	DISCHARGE LINE (VERTICAL RISER)	1/2 ACR
	LIQUID LINE	1/2 ACR
46 (150)	DISCHARGE LINE (HORIZONTAL/VERTICAL DOWN)	5/8 ACR
	DISCHARGE LINE (VERTICAL RISER)	1/2 ACR
	LIQUID LINE	1/2 ACR

TYPE OF FITTING OR VALVE-EQUIVALENT LENGTH OF PIPE IN m (ft)

ACR PIPE SIZE, OD	GATE VALVE	STANDARD ELBOW 90°	REDUCED COUPLING	SIDE OUTLET T	ANGLE VALVE
1/2	0.18 (0.6)	0.43 (1.4)	0.43 (1.4)	0.82 (2.7)	1.83 (6.0)
5/8	0.21 (0.7)	0.49 (1.6)	0.49 (1.6)	0.91 (3.0)	2.13 (7.0)

NOTE:

- ALL REFRIGERANT PIPES MUST BE STRAIGHT ACR TO HAVE 565 PSIG OR ABOVE MWP.
- THE EQUIVALENT LENGTH OF 1/2" OD DISCHARGE LINE PIPE SHOULD BE KEPT TO LESS THAN 18 m (60 ft).
- THE TOTAL EQUIVALENT LENGTH OF DISCHARGE LINE SHOULD BE LESS THAN 46 m (150 ft) TO PREVENT AN EXCESSIVE HOT GAS PRESSURE DROP WHICH CAN INCREASE THE DISCHARGE PRESSURE DURING HOT SUMMER DAY'S.
- TO HAVE A TOTAL EQUIVALENT LENGTH OF 61 m (200 ft), THE LOAD MUST BE REDUCED BY 5%.

NOTES:

- INSTALLATION SHALL COMPLY WITH ALL APPLICABLE NATIONAL, STATE AND LOCAL ELECTRICAL REGULATIONS.
- PLEASE REFER TO PRODUCT MANUALS FOR ADDITIONAL DETAILS PRIOR TO INSTALLATION AND SITE PREPARATION WORK.
- ROUTE PIPING THROUGH THE TOP OR BOTTOM OF THE InRow-RD.
- ALL LINES ARE TYPE L ACR COPPER TUBING.
- S-TRAP THE VERTICAL DISCHARGE LINE EVERY 6m (20 FT) TO ENSURE PROPER OIL RETURN.
- CHANGE THE SIZE OF THE PIPE AFTER THE P-TRAP. REFER REFRIGERATION PIPING DIAGRAM.
- MAXIMUM PIPING RUN IS 61m (200 FT) EQUIVALENT LENGTH.SIZE THE PIPING PURSUANT TO ACCEPTED REFRIGERATION PRACTICE.
- DO NOT INSTALL THE AIR-COOLED CONDENSER BELOW THE InRow-RD. THE CONDENSER MUST BE POSITIONED ABOVE OR SAME LEVEL AS THE InRow-RD TO ENSURE PROPER FUNCTION.
- WHEN BRAZING FIELD-INSTALLED COPPER REFRIGERATION LINES, USE A NITROGEN PURGE TO MINIMIZE CONTAMINATION OF THE REFRIGERATION SYSTEM DURING BRAZING PROCESS.

THIS DRAWING AND SPECIFICATIONS HEREIN ARE THE PROPERTY OF SCHNEIDER ELECTRIC AND SHALL NOT BE COPIED, REPRODUCED OR USED IN WHOLE OR IN PART, AS THE BASIS FOR THE MANUFACTURE OR SALE OF ITEMS WITHOUT WRITTEN PERMISSION FROM SCHNEIDER ELECTRIC. THIS DRAWING IS BASED UPON LATEST AVAILABLE INFORMATION AND IS SUBJECT TO CHANGE WITHOUT NOTICE.

Schneider Electric

TITLE: InRow DIRECT EXPANSION
InRow RD, 300mm, AIR COOLED
ACRD100 : 208 - 230V, 60 Hz
ACRD101 : 220 - 240V, 50 Hz
PIPING DIAGRAMS

DWG NO: ACRD100-101 REV. 0

DRAWN: SURAJ P 27-JAN-12
ENGINEER: R GRANTHAN/M BROWN 29-MAR-12

PROJECT: DRAWINGS SHEET 9 OF 12 APPROVED: C CUMMISKEY/C ZALDIVAR 29-MAR-12

POWER CONNECTIONS

SKU	VOLTAGE	FREQUENCY	MCA	MOP	FLA	COMPRESSOR		POWER (kW)
						LRA	RLA	
ACRD100	208-230V	60Hz	25	40	N/A	87.5	16.0	4.6
ACRD101	220-240V	50Hz	N/A	N/A	21	97.0	16.3	4.4

ABOVE DATA IS BASED ON MAXIMUM OPERATING CONDITIONS.

MCA – MINIMUM CIRCUIT AMPACITY

MOP – MAXIMUM OVERCURRENT PROTECTION

FLA – FULL LOAD AMPS

LRA – LOCKED ROTOR AMPS

RLA – RATED LOAD AMPS

PIPING CONNECTIONS

CONNECTION	TYPE	ACRD100-101
REFRIGERANT DISCHARGE	1" ROTOLOCK *	1/2" OD
REFRIGERANT LIQUID	1" ROTOLOCK *	1/2" OD
CONDENSATE DRAIN		3/16" ID 5/16" OD

* USE THE PROVIDED TEFLON GASKET TO PREVENT LEAKAGE.
TIGHTEN THE ROTOLOCK NUT TO 75Nm [55 lb-ft].

NOTES:

1. INSTALLATION SHALL COMPLY WITH ALL APPLICABLE NATIONAL, STATE AND LOCAL ELECTRICAL REGULATIONS.
2. PLEASE REFER TO PRODUCT MANUALS FOR ADDITIONAL DETAILS PRIOR TO INSTALLATION AND SITE PREPARATION WORK.

THIS DRAWING AND SPECIFICATIONS HEREIN ARE THE PROPERTY OF SCHNEIDER ELECTRIC AND SHALL NOT BE COPIED, REPRODUCED OR USED IN WHOLE OR IN PART, AS THE BASIS FOR THE MANUFACTURE OR SALE OF ITEMS WITHOUT WRITTEN PERMISSION FROM SCHNEIDER ELECTRIC. THIS DRAWING IS BASED UPON LATEST AVAILABLE INFORMATION AND IS SUBJECT TO CHANGE WITHOUT NOTICE.



TITLE: InRow DIRECT EXPANSION
InRow RD, 300mm, AIR COOLED
ACRD100 : 208 - 230V, 60 Hz
ACRD101 : 220 - 240V, 50 Hz
CONNECTION OVERVIEW

DWG NO: ACRD100-101 REV. 0

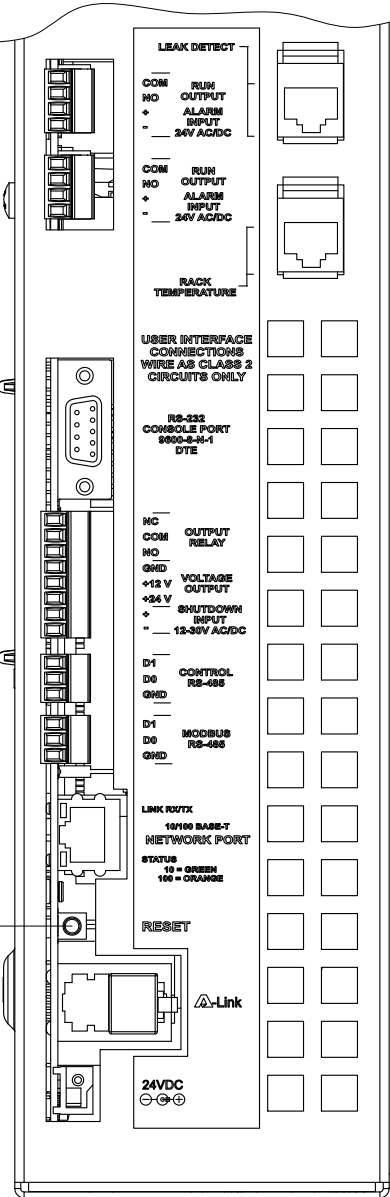
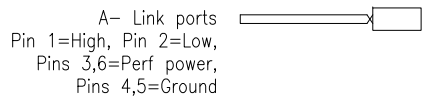
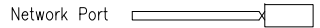
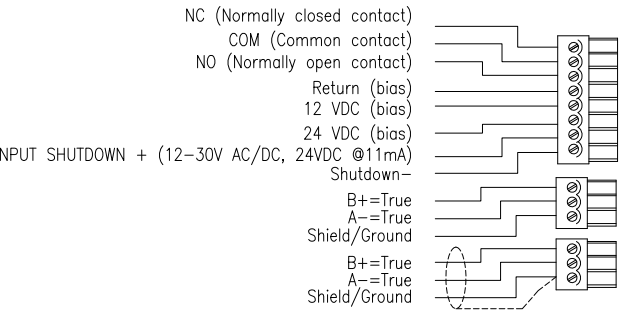
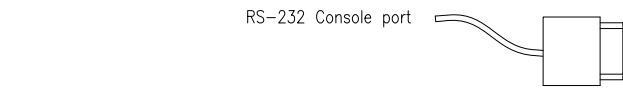
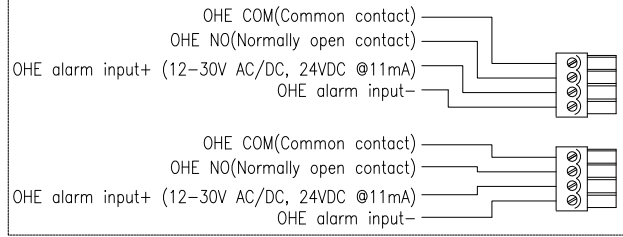
DRAWN: SURAJ P 27-JAN-12 ANGLE PROJECTION

ENGINEER: R GRANTHAN/M BROWN 29-MAR-12

PROJECT: DRAWINGS SHEET 10 OF 12 APPROVED: C CUMMISKEY/C ZALDIVAR 29-MAR-12

USER INTERFACE CONNECTIONS

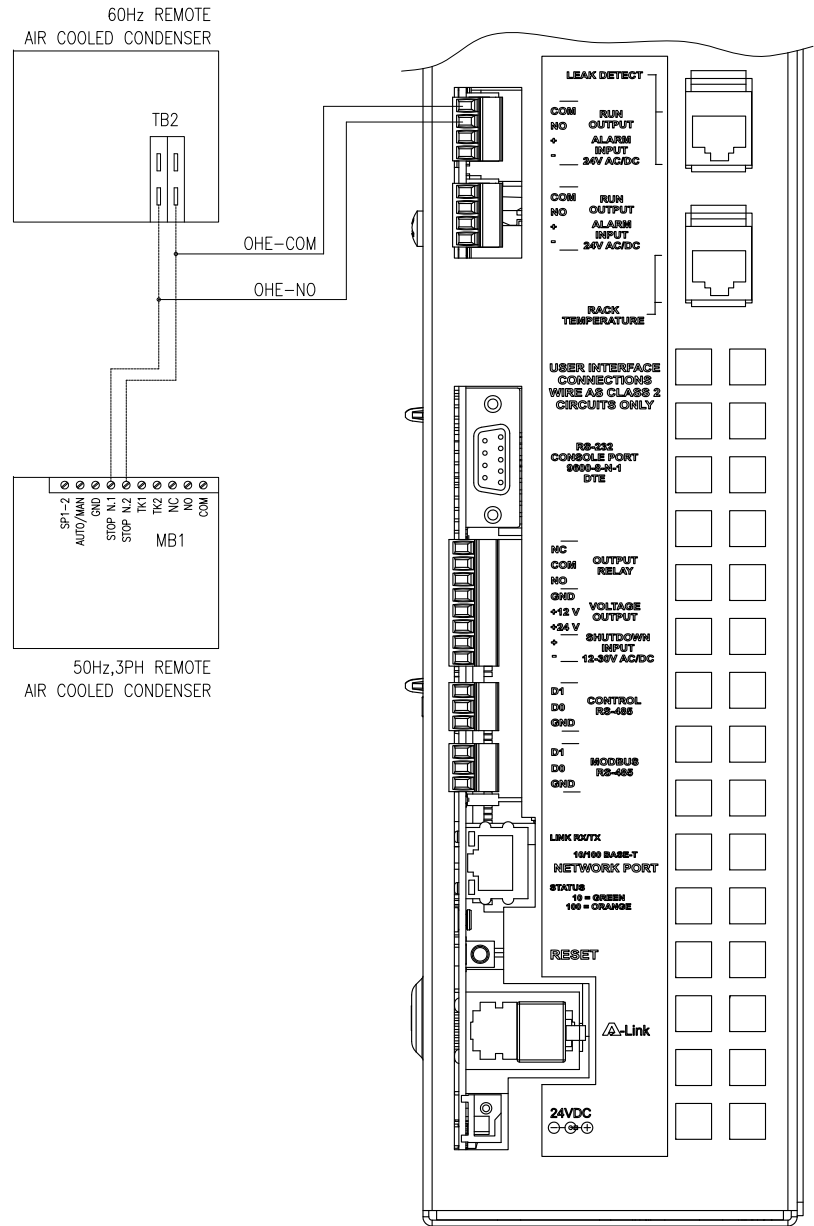
OHE (OUTDOOR HEAT EXCHANGERS) CONNECTIONS (OPTIONAL)



Leak detector port
(Optional Accessory
SKU #AP9325)

Remote
Temperature Sensor
(Supplied)

CONDENSER WIRING (OPTIONAL)



NOTES:

1. INSTALLATION SHALL COMPLY WITH ALL APPLICABLE NATIONAL, STATE AND LOCAL ELECTRICAL REGULATIONS.
2. PLEASE REFER TO PRODUCT MANUALS FOR ADDITIONAL DETAILS PRIOR TO INSTALLATION AND SITE PREPARATION WORK.
3. REMOTE AIR COOLED CONDENSERS HAVE JUMPERS INSTALLED FOR STAND ALONE OPERATIONS. JUMPER MUST BE REMOVED FOR REMOTE OPERATION BY THE ACRD.
4. ACRD PROVIDES A DRY CONTACT CLOSURE FOR REMOTE OPERATION OF THE AIR COOLED CONDENSERS.

THIS DRAWING AND SPECIFICATIONS HEREIN ARE THE PROPERTY OF SCHNEIDER ELECTRIC AND SHALL NOT BE COPIED, REPRODUCED OR USED IN WHOLE OR IN PART, AS THE BASIS FOR THE MANUFACTURE OR SALE OF ITEMS WITHOUT WRITTEN PERMISSION FROM SCHNEIDER ELECTRIC. THIS DRAWING IS BASED UPON LATEST AVAILABLE INFORMATION AND IS SUBJECT TO CHANGE WITHOUT NOTICE.



TITLE: InRow DIRECT EXPANSION
InRow RD, 300mm, AIR COOLED
ACRD100 : 208 - 230V, 60 Hz
ACRD101 : 220 - 240V, 50 Hz
USER INTERFACE

PROJECT: DRAWINGS SHEET 11 OF 12

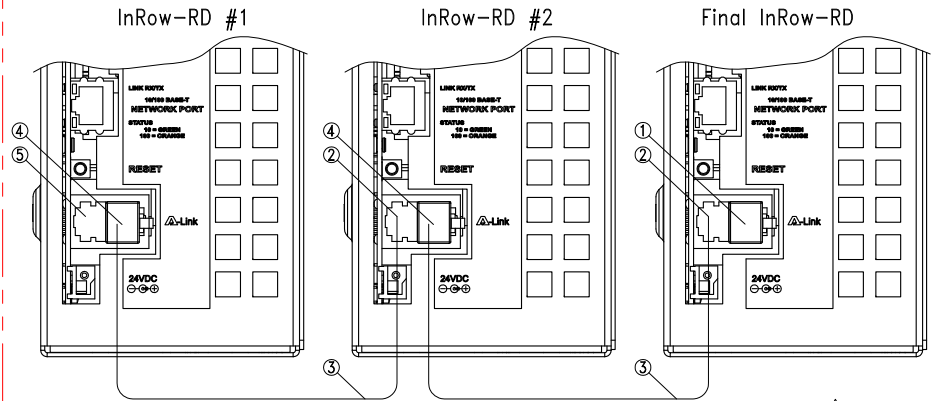
DWG NO: ACRD100-101 REV. 0
DRAWN: SURAJ P 27-JAN-12
ENGINEER: R GRANTHAN/M BROWN 29-MAR-12

APPROVED: C CHUMISKEY/C ZALDIVAR 29-MAR-12

ANGLE PROJECTION



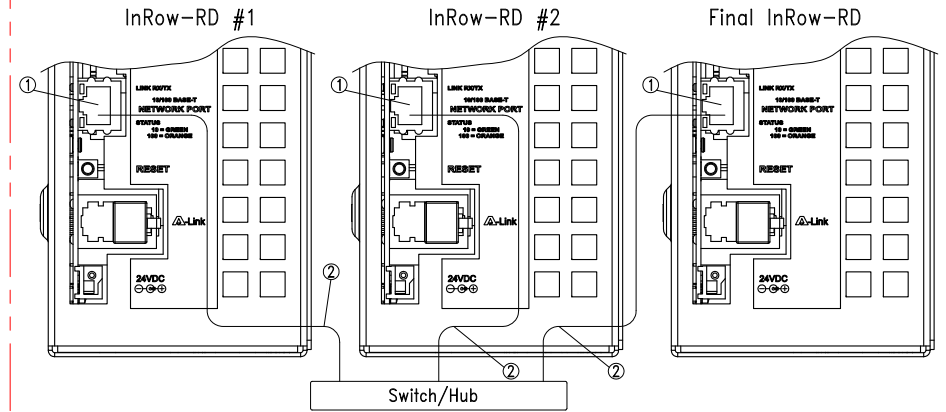
A-LINK CONNECTIONS



- ① A-Link out port (with provided RJ-45 terminator)
- ② A-Link in port
- ③ A-Link cable (CAT-5 ethernet cable)
- ④ A-Link out port
- ⑤ A-Link in port (with provided RJ-45 terminator)

3

NETWORK PORT CONNECTIONS

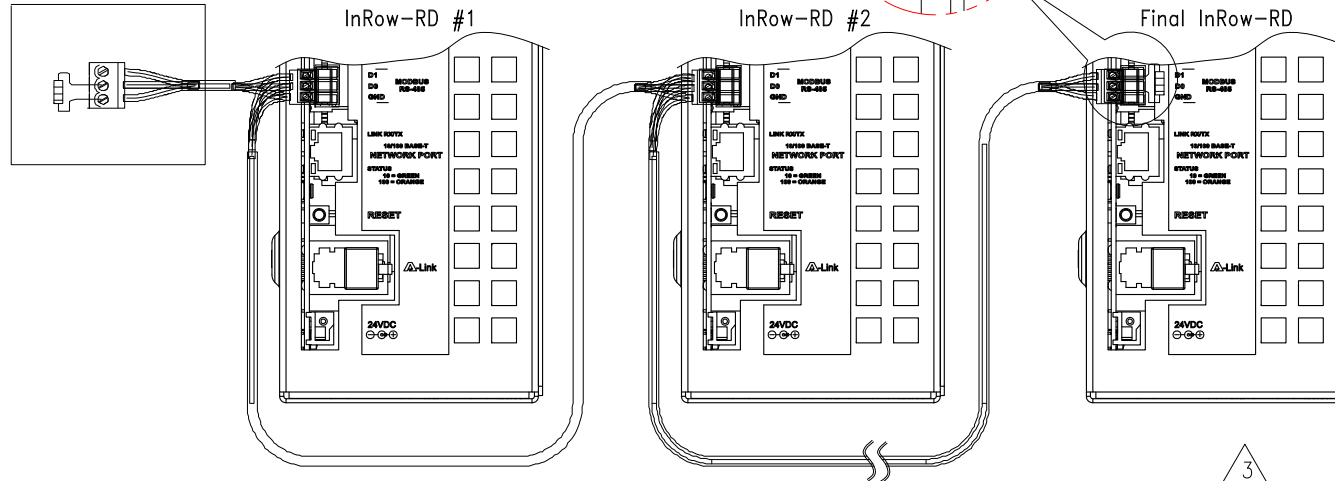


- ① NETWORK PORT
- ② LAN cable (10/100 Base-T)

3

BUILDING MANAGEMENT SYSTEM

ModBus MASTER



- 1. 150 ohms, 1/4 Watt termination resistor(provided)
- 2. MODBUS cable (RS-485)

3

- NOTES:
1. INSTALLATION SHALL COMPLY WITH ALL APPLICABLE NATIONAL, STATE AND LOCAL ELECTRICAL REGULATIONS.
 2. PLEASE REFER TO PRODUCT MANUALS FOR ADDITIONAL DETAILS PRIOR TO INSTALLATION AND SITE PREPARATION WORK.

△3. INTER-CONNECTING WIRING IS SUPPLIED AND FIELD INSTALLED BY OTHERS.

THIS DRAWING AND SPECIFICATIONS HEREIN ARE THE PROPERTY OF SCHNEIDER ELECTRIC AND SHALL NOT BE COPIED, REPRODUCED OR USED IN WHOLE OR IN PART, AS THE BASIS FOR THE MANUFACTURE OR SALE OF ITEMS WITHOUT WRITTEN PERMISSION FROM SCHNEIDER ELECTRIC. THIS DRAWING IS BASED UPON LATEST AVAILABLE INFORMATION AND IS SUBJECT TO CHANGE WITHOUT NOTICE.



TITLE: InRow DIRECT EXPANSION
InRow RD, 300mm, AIR COOLED
ACRD100 : 208 - 230V, 60 Hz
ACRD101 : 220 - 240V, 50 Hz
CONTROL WIRING

PROJECT: DRAWINGS SHEET 12 OF 12

DWG NO: ACRD100-101 REV. 0

DRAWN: SURAJ P	27-JAN-12	ANGLE PROJECTION
ENGINEER: R GRANTHAN/M BROWN	29-MAR-12	
APPROVED: C CUMMISKEY/C ZALDIVAR	29-MAR-12	