



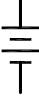
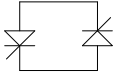


## SYMMETRA PX 100, 100 kVA Package.

Sheet No.	Component /Detail	Description
1	Drawing Guide	SYMMETRA PX 100, 100kVA 208V, Top & Bottom Feed Drawing guide
2-6	Solution	SYMMETRA PX 100, 100kVA 208V, Top & Bottom Feed.
7-9	UPS Power Frame	SYMMETRA PX 100, 100kVA 208V, Top & Bottom Feed.
10-11	Battery Cabinet	SYMMETRA PX 100, 100kVA 208V, Battery Cabinet.
12-14	Power Distribution Unit	SYMMETRA PX 100, 100kVA 208V, PDU.
15-17	System One Line Diagram	SYMMETRA PX 100, 100kVA 208V, Top & Bottom Feed, System One Line Diagram.

LEGEND			
SYMBOL	DESCRIPTION	SYMBOL	DESCRIPTION
	SWITCH DISCONNECT		CONVERTER
	CIRCUIT BREAKER		INVERTER
	BATTERY		BYPASS SSW

THIS DRAWING AND SPECIFICATIONS HEREIN ARE THE PROPERTY OF SCHNEIDER ELECTRIC AND SHALL NOT BE COPIED, REPRODUCED OR USED IN WHOLE OR IN PART, AS THE BASIS FOR THE MANUFACTURE OR SALE OF ITEMS WITHOUT WRITTEN PERMISSION FROM SCHNEIDER ELECTRIC. THIS DRAWING IS BASED UPON LATEST AVAILABLE INFORMATION AND IS SUBJECT TO CHANGE WITHOUT NOTICE.



TITLE: SYMMETRA PX  
SYMMETRA PX 100 kW  
INPUT: 208V, 3PH  
OUTPUT: 208V, 100kW, 3PH, TOP & BOTTOM FEED  
DRAWING GUIDE

PROJECT: DRAWINGS SHEET 1 OF 17

DWG NO: SY100K100FTBPDPM100F

DRAWN BY: SURAJ P 12-JAN-12

ENGINEER: K.S/C.F.P./J.S 19-MAR-12

APPROVED BY: B.SHERIDAN/F.DIOSA 19-MAR-12

REV. 0

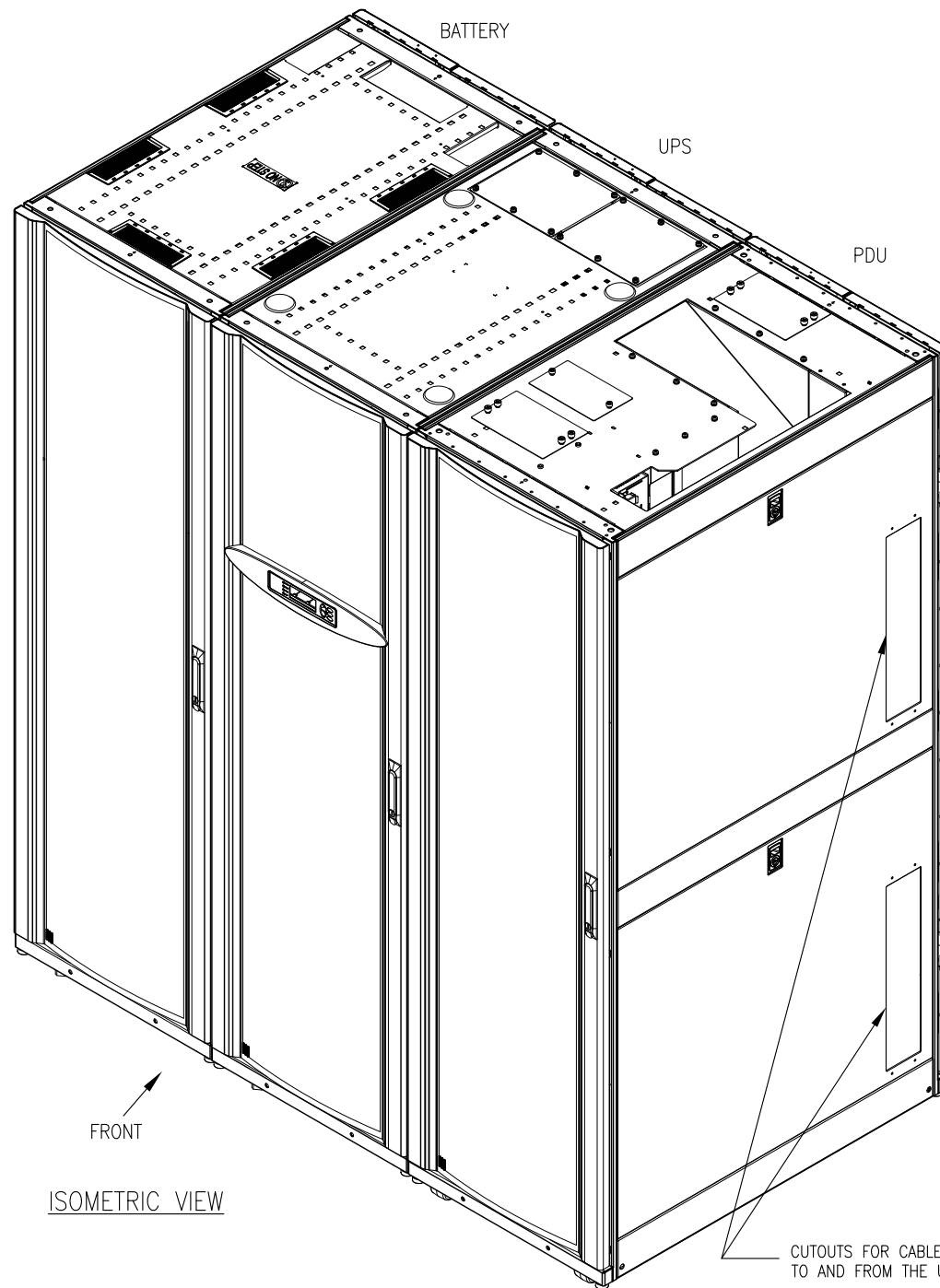
ANGLE

PROJECTION

N/A

SKU#	Runtime in Min
SY100K100F	5
SY100K100F+(1)SYCFXR9	16
SY100K100F+(2)SYCFXR9	28
SY100K100F+(3)SYCFXR9	41

△4 △6



ISOMETRIC VIEW

**NOTES:**

1. INSTALLATION SHALL COMPLY WITH ALL APPLICABLE NATIONAL, STATE AND LOCAL CODES.
2. PLEASE REFER TO PRODUCT MANUALS PRIOR TO INSTALLATION AND SITE PREPARATION WORK FOR FURTHER DETAILS .
3. FRONT AND REAR SERVICE ACCESS IS REQUIRED.
- △4. FOR CONFIGURATION AND RUNTIME DETAILS REFER TO TABLE ABOVE.
5. FOR OPERATING TEMPERATURE PLEASE REFER TO INDIVIDUAL COMPONENT DRAWINGS.
- △6. BATTERY RUN TIMES ARE THEORETICAL AND CALCULATED BASED ON DATA PROVIDED BY BATTERY. MANUFACTURER ASSUMING OPTIMUM ENVIRONMENT AND LOAD CONDITIONS.

THIS DRAWING AND SPECIFICATIONS HEREIN ARE THE PROPERTY OF SCHNEIDER ELECTRIC AND SHALL NOT BE COPIED, REPRODUCED OR USED IN WHOLE OR IN PART, AS THE BASIS FOR THE MANUFACTURE OR SALE OF ITEMS WITHOUT WRITTEN PERMISSION FROM SCHNEIDER ELECTRIC. THIS DRAWING IS BASED UPON LATEST AVAILABLE INFORMATION AND IS SUBJECT TO CHANGE WITHOUT NOTICE.



**TITLE:** SYMMETRA PX 100 kW  
 SYMMETRA PX 100 kW  
 INPUT: 208V, 3PH  
 OUTPUT: 208V, 100kW, 3PH, TOP & BOTTOM FEED  
 SOLUTION ISOMETRIC VIEW

**PROJECT:** DRAWINGS **SHEET** 2 OF 17

**DWG NO:** SY100K100FTBPDPM100F

**DRAWN BY:** SURAJ P 12-JAN-12

**ENGINEER:** K.S/C.F.P/J.S 19-MAR-12

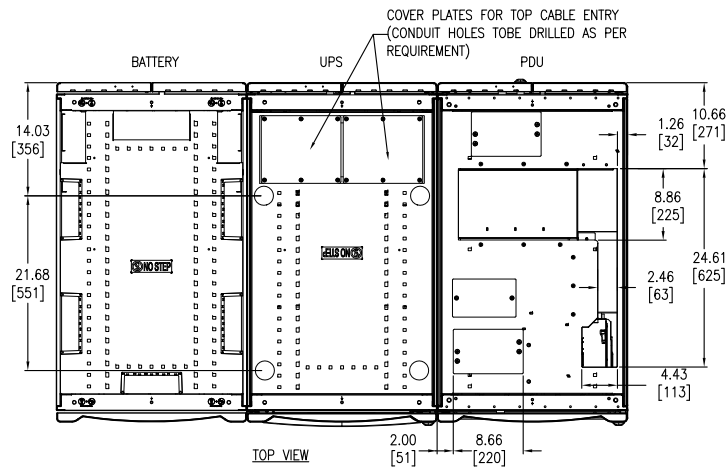
**APPROVED BY:** B.SHERIDAN/F.DIOSA 19-MAR-12

**REV.** 0

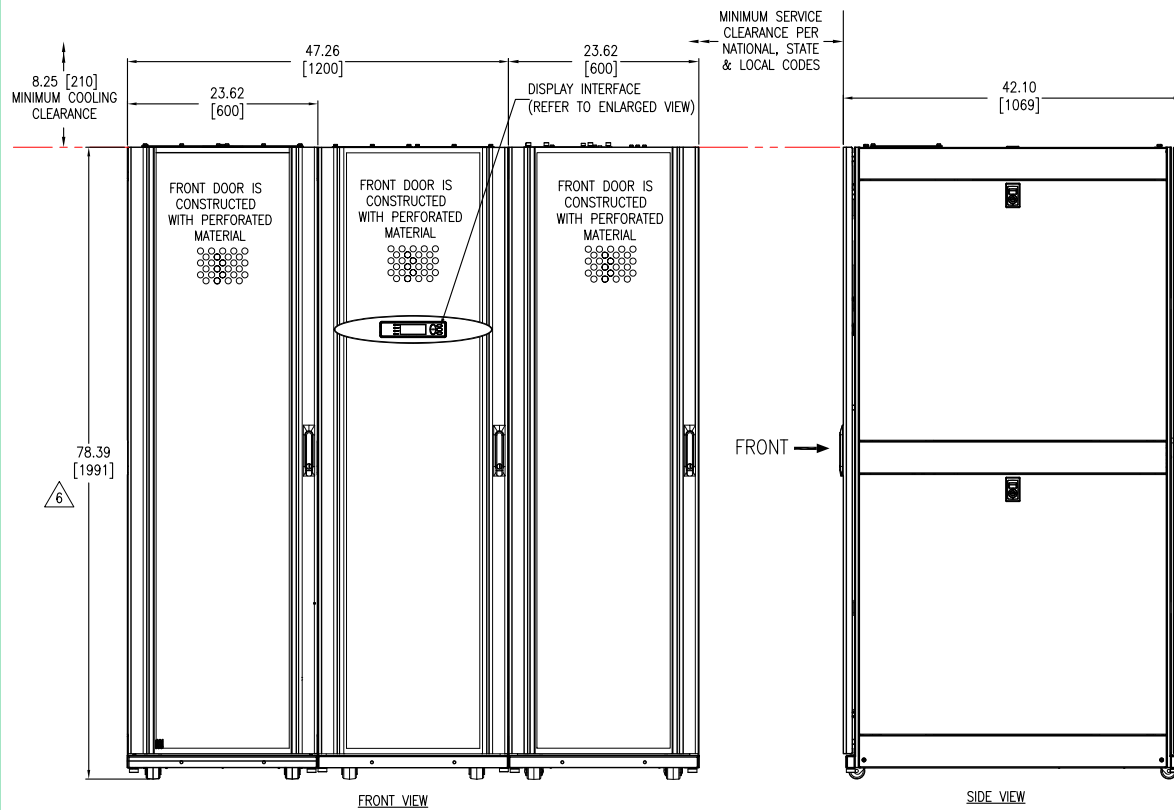
**ANGLE** PROJECTION

NA

- NOTES:**
1. INSTALLATION SHALL COMPLY WITH ALL APPLICABLE NATIONAL, STATE AND LOCAL CODES.
  2. PLEASE REFER TO PRODUCT MANUALS PRIOR TO INSTALLATION AND SITE PREPARATION WORK FOR FURTHER DETAILS.
  3. UNLESS OTHERWISE SPECIFIED, ALL DIMENSIONS ARE IN INCHES [MILLIMETERS].
  4. CABLE ENTRY DETAILS.
    - a) INSTALLATION WITH PDU – LEFT AND RIGHT SIDES OF THE UNIT.
    - b) INSTALLATION WITHOUT PDU – TOP OR BOTTOM OF THE UNIT. BOTTOM CABLE ENTRY IS APPLICABLE ONLY FOR SYSTEMS INSTALLED IN A RAISED FLOOR.
  5. MINIMUM OF 40 INCHES [1000mm] FRONT AND 36 INCHES [900mm] REAR SERVICE CLEARANCE IS RECOMMENDED.
  - △ 6. MAXIMUM HEIGHT OF THE UNIT INCLUDES TOP PROTRUSIONS AND CAPTIVE FASTENERS.
  7. OPERATING TEMPERATURE: 32–104°F [0–40°C]
  8. COLOUR: BLACK
  - △ 9. THIS INFORMATION PROVIDED CONSERVATIVE CENTER OF GRAVITY CALCULATION.



DISPLAY INTERFACE (ENLARGED VIEW)



MINIMUM SERVICE CLEARANCE PER NATIONAL, STATE & LOCAL CODES

△ 9

CENTER OF GRAVITY AND WEIGHT FOR UPS POWER FRAME								
UPS Rating	No. of Power Modules	Weight in lb [kg]	Center of Gravity with Power Modules in Inches [mm]			Center of Gravity without Power Modules in Inches [mm]		
			X-Distance	Y-Distance	Z-Distance	X-Distance	Y-Distance	Z-Distance
100kW	10	1302 [591]	11.57 [294]	42.76 [1086]	17.52 [445]	11.38 [289]	38.11 [968]	20.39 [518]
90kW	9	1247 [566]	11.57 [294]	41.38 [1051]	17.68 [449]			
80kW	8	1192 [541]	11.54 [293]	40.16 [1020]	17.87 [454]			
70kW	7	1137 [516]	11.54 [293]	39.09 [993]	18.07 [459]			
60kW	6	1082 [491]	11.54 [293]	38.15 [969]	18.31 [465]			
50kW	5	1027 [466]	11.50 [292]	37.48 [952]	18.54 [471]			
40kW	4	972 [441]	11.50 [292]	36.93 [938]	18.86 [479]			
30kW	3	917 [416]	11.46 [291]	36.69 [932]	19.17 [487]			
20kW	2	862 [391]	11.46 [291]	36.73 [933]	19.53 [496]			
10kW	1	807 [366]	11.42 [290]	37.20 [945]	19.92 [506]			

CENTER OF GRAVITY FOR BATTERY CABINET			
Battery Cabinet	Center of Gravity in Inches [mm]		
	X-Distance	Y-Distance	Z-Distance
With Batteries	11.71 [297.5]	43.58 [1107]	16.53 [419.9]
Without Batteries	11.79 [299.5]	40.29 [1023.6]	21.48 [545.5]

UPS/BATTERY CABINET

Floor Loading Data			
SKU #	Dimensions HxWxD in Inches [mm]	Weight in lb [kg]	Floor Loading in lb/ft <sup>2</sup> [kg/m <sup>2</sup> ]
SY100K100F (UPS Cabinet)	79.17x23.62x42.13 [2011x600x1070]	1309 [595]	190 [930]
SYCFXR9-9 (Batt. Cabinet)	78.39x23.62x42.13 [1991x600x1070]	2660 [1209]	386 [1883]
PDPM100F-M (PDU)	79.02x23.62x42.13 [2007x600x1070]	900 [409]	131 [641]

THIS DRAWING AND SPECIFICATIONS HEREIN ARE THE PROPERTY OF SCHNEIDER ELECTRIC AND SHALL NOT BE COPIED, REPRODUCED OR USED IN WHOLE OR IN PART, AS THE BASIS FOR THE MANUFACTURE OR SALE OF ITEMS WITHOUT WRITTEN PERMISSION FROM SCHNEIDER ELECTRIC. THIS DRAWING IS BASED UPON LATEST AVAILABLE INFORMATION AND IS SUBJECT TO CHANGE WITHOUT NOTICE.



**TITLE:** SYMMETRA PX 100 kW  
 SYMMETRA PX 100 kW  
 INPUT: 208V, 3PH  
 OUTPUT: 208V, 100kW, 3PH, TOP & BOTTOM FEED  
 SOLUTION GENERAL ARRANGEMENT

**PROJECT:** DRAWINGS **SHEET** 3 OF 17

**DWG NO:** SY100K100FTBPDPM100F **REV.** 1

**DRAWN BY:** SURAJ P/S CUNHA 14-MAY-13 **THIRD**

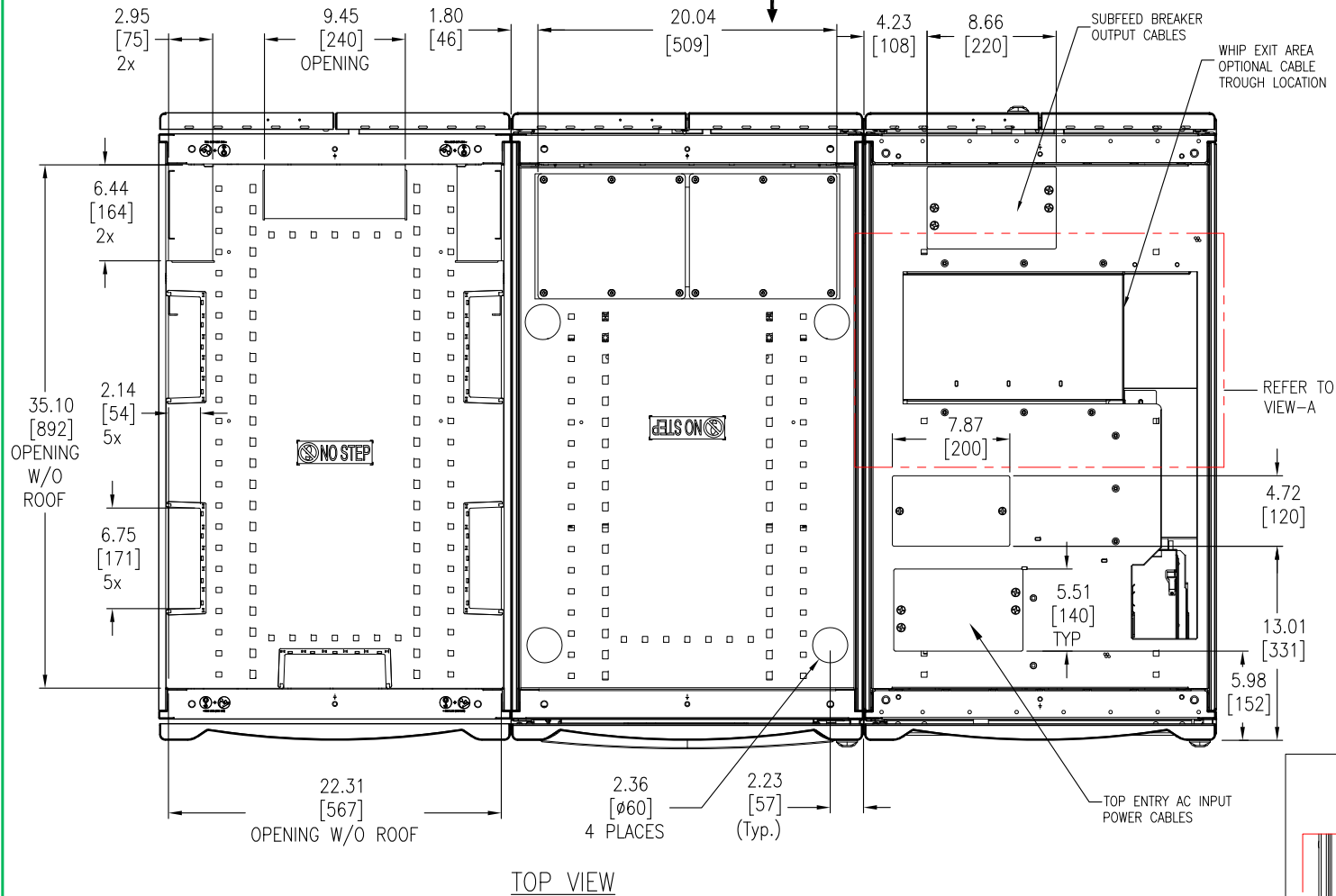
**ENGINEER:** C.F.P./J.S./K SILBERBAUER 14-MAY-13 **ANGLE**

**APPROVED BY:** B.SHERIDAN/F.DIOSA 19-MAR-12 **PROJECTION**

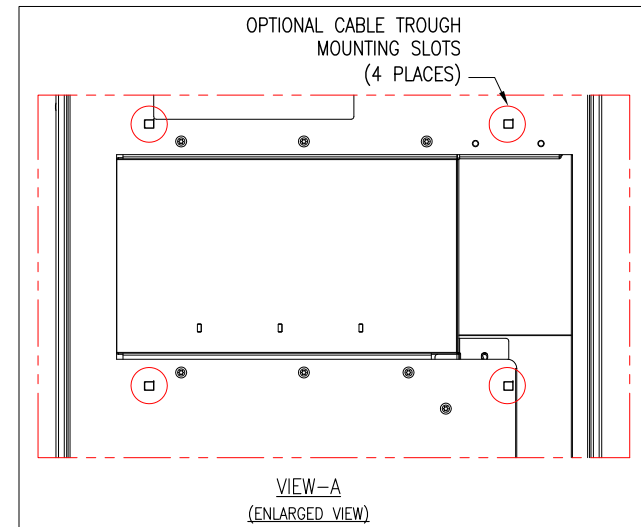
BATTERY

UPS FRONT

PDU



TOP VIEW



NOTES:

1. INSTALLATION SHALL COMPLY WITH ALL APPLICABLE NATIONAL, STATE AND LOCAL CODES.
2. PLEASE REFER TO PRODUCT MANUALS PRIOR TO INSTALLATION AND SITE PREPARATION WORK FOR FURTHER DETAILS.
3. UNLESS OTHERWISE SPECIFIED, ALL DIMENSIONS ARE IN INCHES [MILLIMETERS].

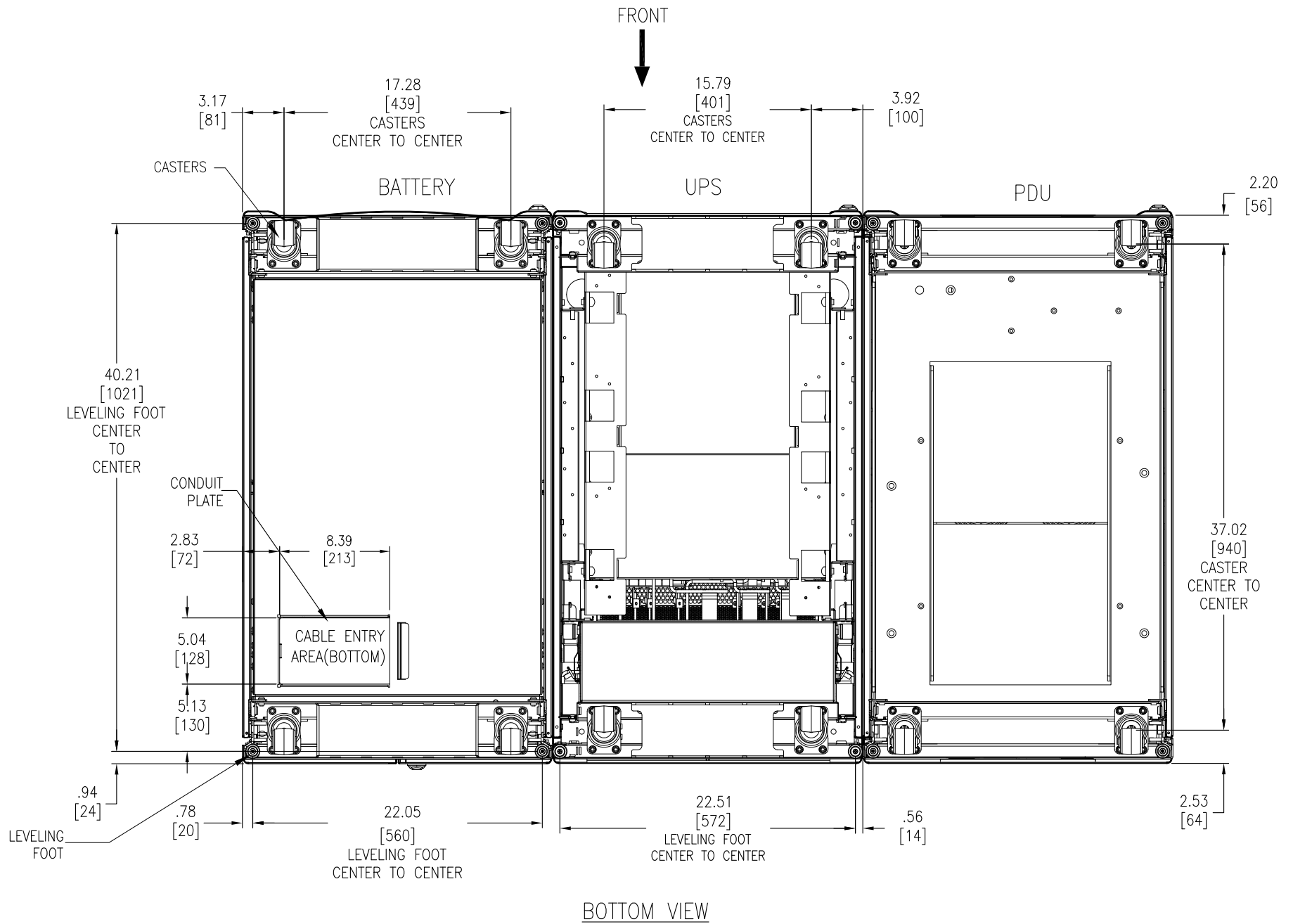
THIS DRAWING AND SPECIFICATIONS HEREIN ARE THE PROPERTY OF SCHNEIDER ELECTRIC AND SHALL NOT BE COPIED, REPRODUCED OR USED IN WHOLE OR IN PART, AS THE BASIS FOR THE MANUFACTURE OR SALE OF ITEMS WITHOUT WRITTEN PERMISSION FROM SCHNEIDER ELECTRIC. THIS DRAWING IS BASED UPON LATEST AVAILABLE INFORMATION AND IS SUBJECT TO CHANGE WITHOUT NOTICE.



TITLE: SYMMETRA PX  
 SYMMETRA PX 100 kW  
 INPUT: 208V, 3PH  
 OUTPUT: 208V, 100kW, 3PH, TOP & BOTTOM FEED  
 SOLUTION TOP VIEW  
 PROJECT: DRAWINGS SHEET 4 OF 17

DWG NO: SY100K100FTBPDPM100F  
 DRAWN BY: SURAJ P 12-JAN-12  
 ENGINEER: K.S/C.F.P/J.S 19-MAR-12  
 APPROVED BY: B.SHERIDAN/F.DIOSA 19-MAR-12

REV. 0  
 THIRD ANGLE PROJECTION



BOTTOM VIEW

- NOTES:**
1. INSTALLATION SHALL COMPLY WITH ALL APPLICABLE NATIONAL, STATE AND LOCAL CODES.
  2. PLEASE REFER TO PRODUCT MANUALS PRIOR TO INSTALLATION AND SITE PREPARATION WORK FOR FURTHER DETAILS.
  3. UNLESS OTHERWISE SPECIFIED, ALL DIMENSIONS ARE IN INCHES [MILLIMETERS].

THIS DRAWING AND SPECIFICATIONS HEREIN ARE THE PROPERTY OF SCHNEIDER ELECTRIC AND SHALL NOT BE COPIED, REPRODUCED OR USED IN WHOLE OR IN PART, AS THE BASIS FOR THE MANUFACTURE OR SALE OF ITEMS WITHOUT WRITTEN PERMISSION FROM SCHNEIDER ELECTRIC. THIS DRAWING IS BASED UPON LATEST AVAILABLE INFORMATION AND IS SUBJECT TO CHANGE WITHOUT NOTICE.



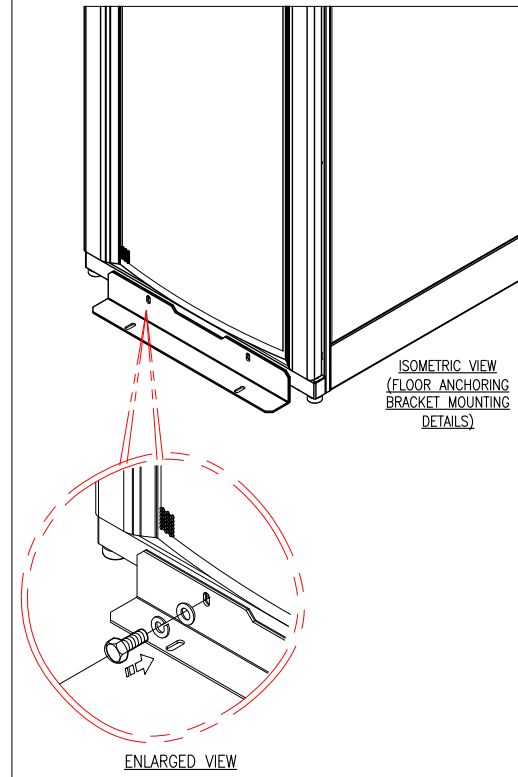
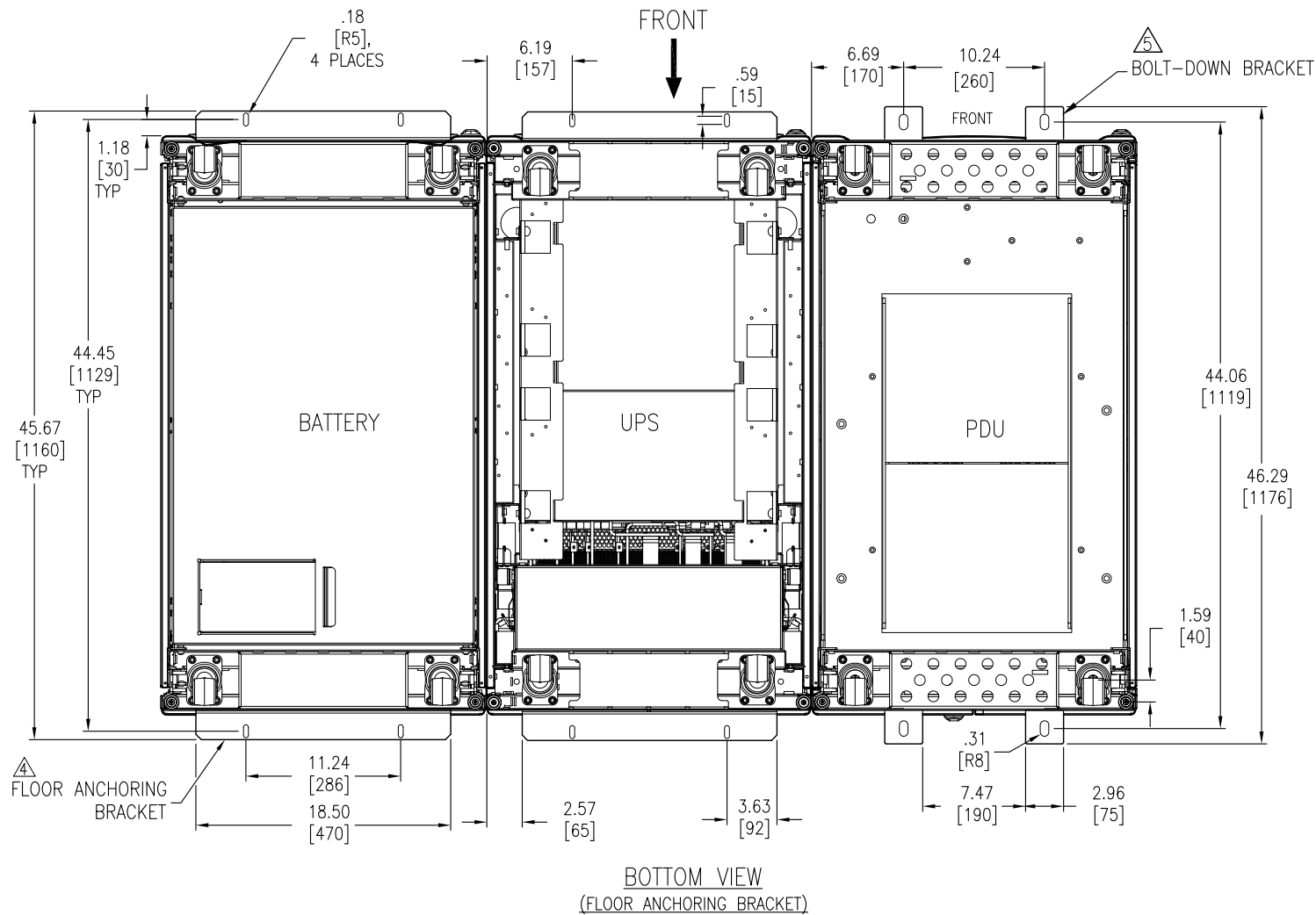
**TITLE:** SYMMETRA PX 100 kW  
 INPUT: 208V, 3PH  
 OUTPUT: 208V, 100kW, 3PH, TOP & BOTTOM FEED SOLUTION BOTTOM VIEW

**PROJECT:** DRAWINGS **SHEET 5 OF 17**

**DWG NO:** SY100K100FTBPDPM100F

**DRAWN BY:** SURAJ P 12-JAN-12  
**ENGINEER:** K.S/C.F.P./J.S 19-MAR-12  
**APPROVED BY:** B.SHERIDAN/F.DIOSA 19-MAR-12

**REV.** 0  
**THIRD ANGLE PROJECTION**



**NOTES:**

1. INSTALLATION SHALL COMPLY WITH ALL APPLICABLE NATIONAL, STATE AND LOCAL CODES.
2. PLEASE REFER TO PRODUCT MANUALS FOR ADDITIONAL DETAILS PRIOR TO INSTALLATION AND SITE PREPARATION WORK.
3. UNLESS OTHERWISE SPECIFIED, ALL DIMENSIONS ARE IN INCHES [MILLIMETERS].
- △ 4. TO STABILIZE ENCLOSURE IN THE FIELD, USE INCLUDED ANCHORING BRACKETS. ATTACH THE BRACKETS TO THE UNIT AS SHOWN. USE CODE COMPLAINT FASTENERS TO SECURE THE UNIT TO THE FLOOR.
- △ 5. ANCHORING BRACKETS CAN BE INSTALLED AT FRONT AND BACK OF UNIT. ADEQUATE FRONT AND REAR CLEARANCE SHOULD BE PROVIDED IF THE UNIT IS TO BE ANCHORED. USE CODE COMPLAINT FASTENERS TO SECURE UNIT TO THE FLOOR. BOLT DOWN KIT (SKU # AR7701) IS OPTIONAL AND HAS TO BE ORDERED SEPARATELY.

THIS DRAWING AND SPECIFICATIONS HEREIN ARE THE PROPERTY OF SCHNEIDER ELECTRIC AND SHALL NOT BE COPIED, REPRODUCED OR USED IN WHOLE OR IN PART, AS THE BASIS FOR THE MANUFACTURE OR SALE OF ITEMS WITHOUT WRITTEN PERMISSION FROM SCHNEIDER ELECTRIC. THIS DRAWING IS BASED UPON LATEST AVAILABLE INFORMATION AND IS SUBJECT TO CHANGE WITHOUT NOTICE.

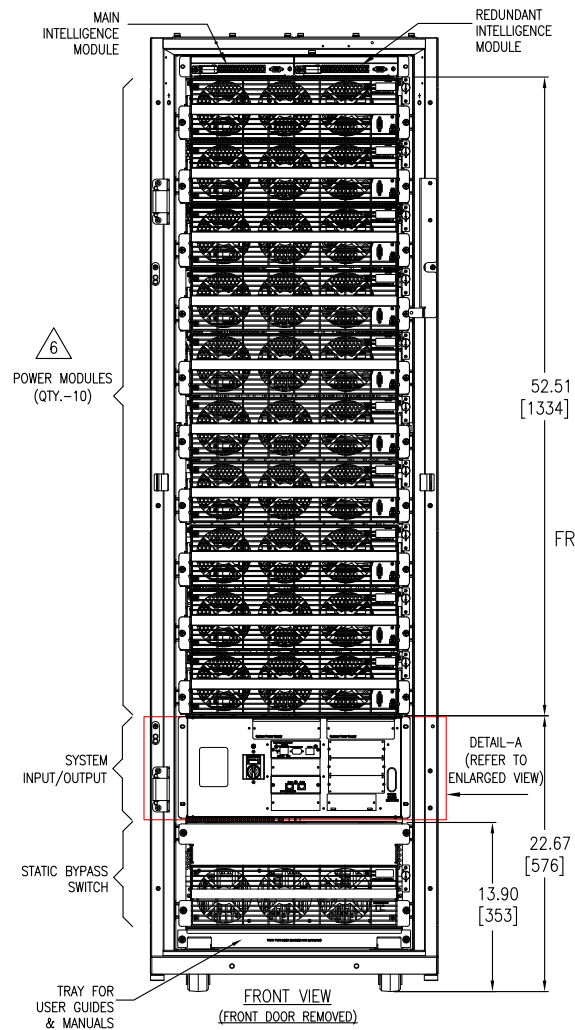


**TITLE:** SYMMETRA PX  
SYMMETRA PX 100 kW  
INPUT: 208V, 3PH  
OUTPUT: 208V, 100kW, 3PH, TOP & BOTTOM FEED  
SOLUTION ANCHORING DETAILS

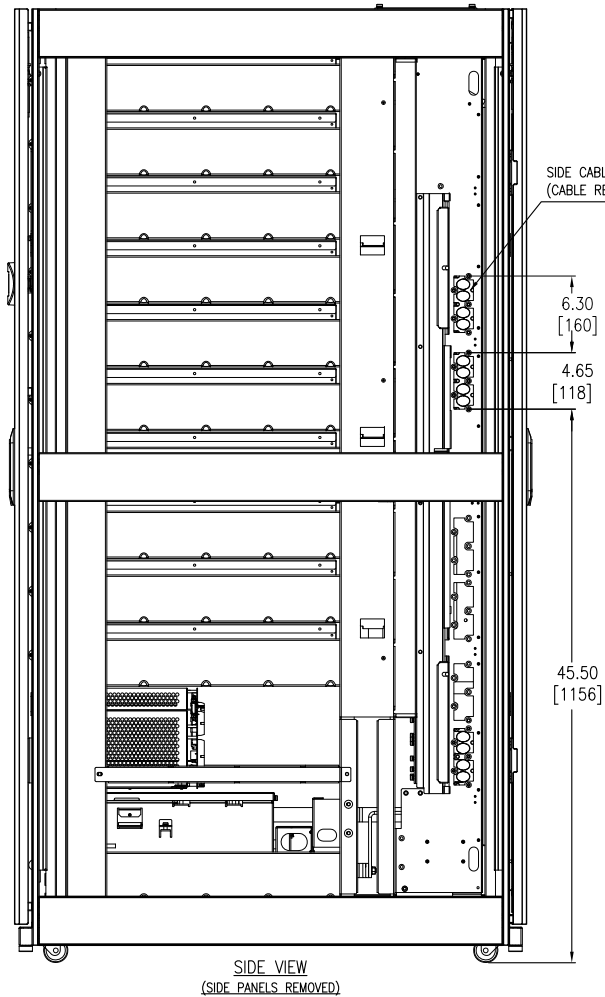
**PROJECT:** DRAWINGS **SHEET:** 6 OF 17

<b>DWG NO:</b> SY100K100FTBPDPM100F	<b>REV:</b> 0
<b>DRAWN BY:</b> SURAJ P	12-JAN-12
<b>ENGINEER:</b> K.S/C.F.P/J.S	19-MAR-12
<b>APPROVED BY:</b> B.SHERIDAN/F.DIOSA	19-MAR-12
	THIRD ANGLE PROJECTION

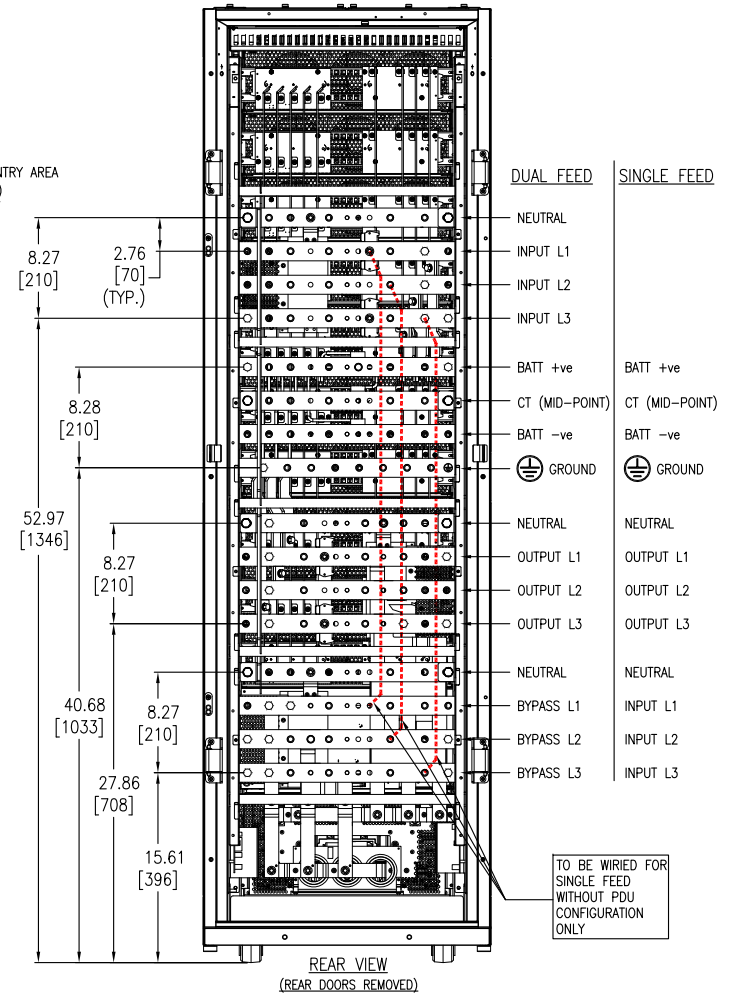




FRONT →



SIDE VIEW  
(SIDE PANELS REMOVED)

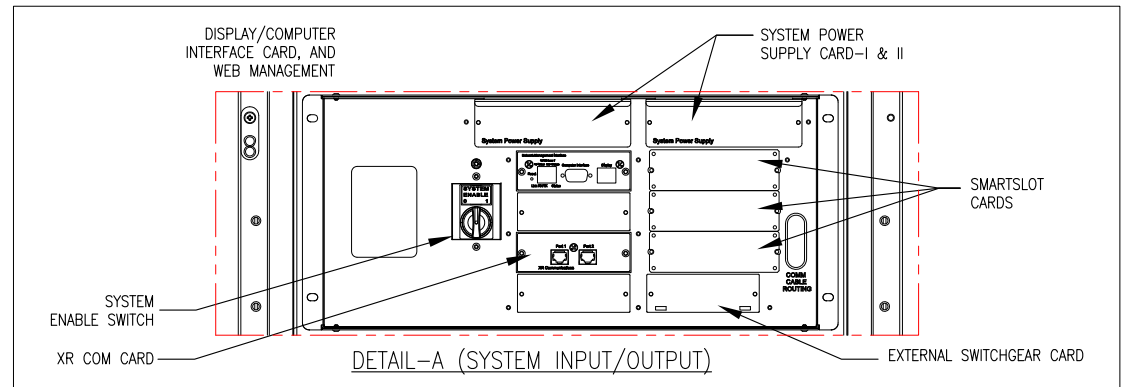


REAR VIEW  
(REAR DOORS REMOVED)

**NOTES**

1. INSTALLATION SHALL COMPLY WITH ALL APPLICABLE NATIONAL, STATE AND LOCAL CODES.
2. PLEASE REFER TO PRODUCT MANUALS FOR ADDITIONAL DETAILS PRIOR TO INSTALLATION AND SITE PREPARATION WORK.
3. UNLESS OTHERWISE SPECIFIED, ALL DIMENSIONS ARE IN INCHES [MILLIMETERS].
4. SOME STRUCTURAL DETAILS HAVE BEEN OMITTED FOR THE PURPOSE OF CLARITY.
5. UPS IS DESIGNED FOR SINGLE AND DUAL MAINS.

△6. CONFIGURATION SHOWN WITH "SYCF100KF + (10) SYPM10KF2" FOR 100kW.



THIS DRAWING AND SPECIFICATIONS HEREIN ARE THE PROPERTY OF SCHNEIDER ELECTRIC AND SHALL NOT BE COPIED, REPRODUCED OR USED IN WHOLE OR IN PART, AS THE BASIS FOR THE MANUFACTURE OR SALE OF ITEMS WITHOUT WRITTEN PERMISSION FROM SCHNEIDER ELECTRIC. THIS DRAWING IS BASED UPON LATEST AVAILABLE INFORMATION AND IS SUBJECT TO CHANGE WITHOUT NOTICE.



TITLE: SYMMETRA PX  
SYMMETRA PX 100 kW  
INPUT: 208V, 3PH  
OUTPUT: 208V, 100kW, 3PH, TOP & BOTTOM FEED  
UPS POWER FRAME INTERNAL VIEW  
PROJECT: DRAWINGS SHEET 7 OF 17

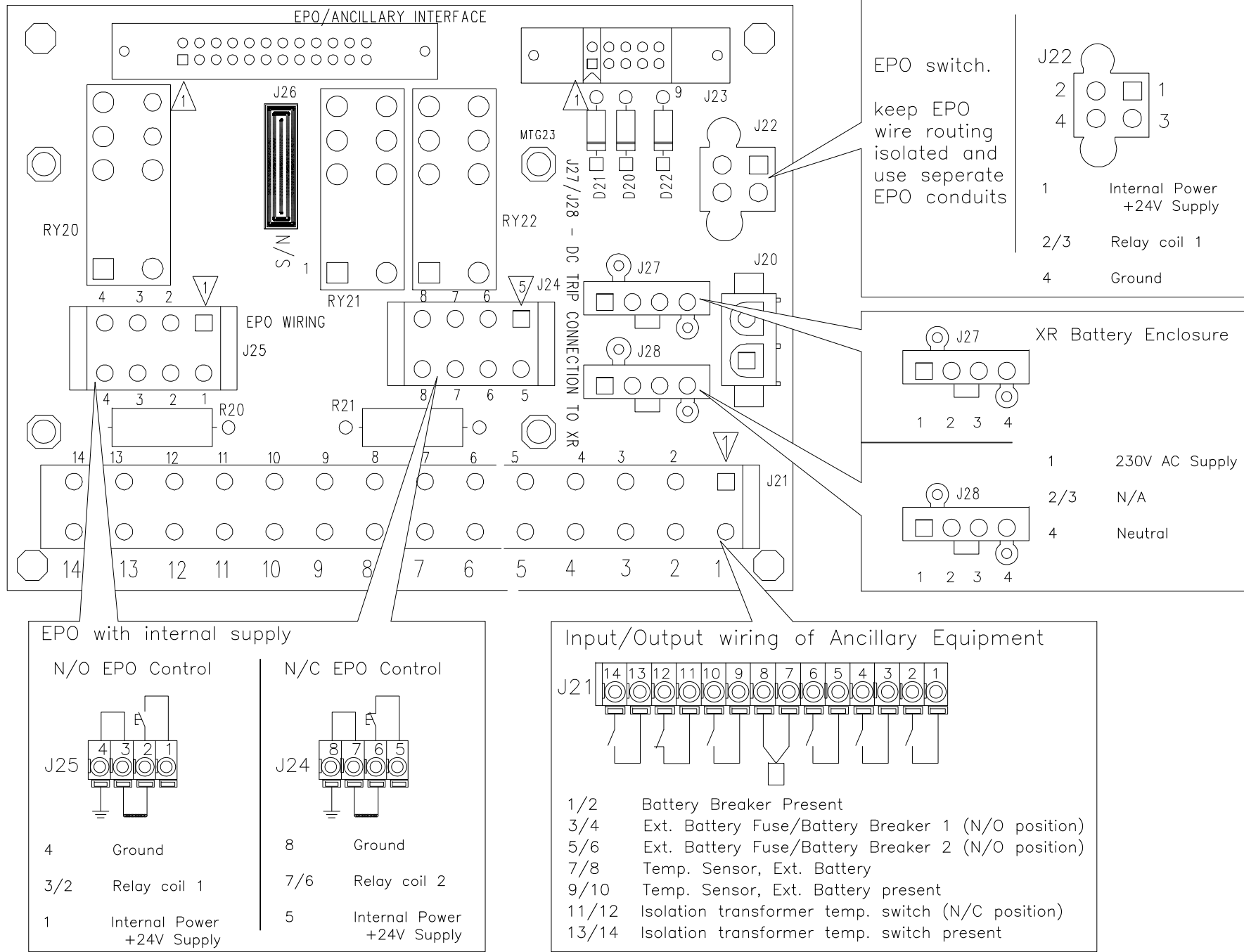
DWG NO: SY100K100FTBPDPM100F  
DRAWN BY: SURAJ P/S CUNHA 14-MAY-13  
ENGINEER: CFF/JS/K SILBERBAUER 14-MAY-13  
APPROVED BY: B.SHERIDAN/F.DIOSA 19-MAR-12

REV. 1  
THIRD ANGLE PROJECTION





# EPO switch wiring details



**NOTES**

1. INSTALLATION SHALL COMPLY WITH ALL APPLICABLE NATIONAL, STATE AND LOCAL CODES.
2. PLEASE REFER TO PRODUCT MANUALS PRIOR TO INSTALLATION AND SITE PREPARATION WORK FOR FURTHER DETAILS .

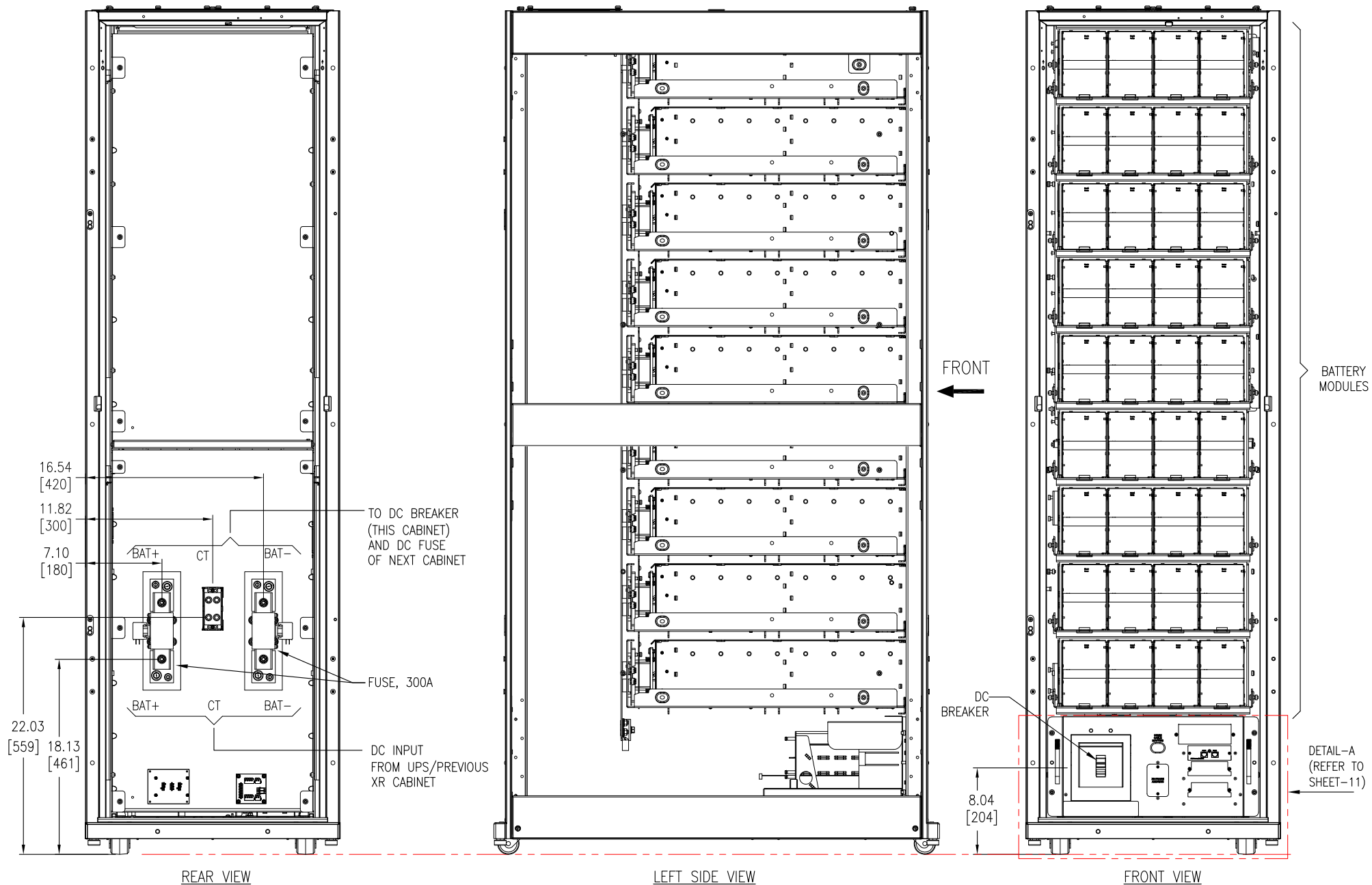
THIS DRAWING AND SPECIFICATIONS HEREIN ARE THE PROPERTY OF SCHNEIDER ELECTRIC AND SHALL NOT BE COPIED, REPRODUCED OR USED IN WHOLE OR IN PART, AS THE BASIS FOR THE MANUFACTURE OR SALE OF ITEMS WITHOUT WRITTEN PERMISSION FROM SCHNEIDER ELECTRIC. THIS DRAWING IS BASED UPON LATEST AVAILABLE INFORMATION AND IS SUBJECT TO CHANGE WITHOUT NOTICE.



**TITLE:** SYMMETRA PX  
SYMMETRA PX 100 kW  
INPUT: 208V, 3PH  
OUTPUT: 208V, 100kW, 3PH, TOP & BOTTOM FEED  
EPO SWITCH WIRING DIAGRAM

**PROJECT:** DRAWINGS **SHEET** 9 OF 17

<b>DWG NO:</b> SY100K100FTBPDP100F	<b>REV.</b> 0
<b>DRAWN BY:</b> SURAJ P	12-JAN-12
<b>ENGINEER:</b> K.S/C.F./J.S	19-MAR-12
<b>APPROVED BY:</b> B.SHERIDAN/F.DIOSA	19-MAR-12
	ANGLE PROJECTION
	NA



- NOTES:**
1. INSTALLATION SHALL COMPLY WITH ALL APPLICABLE NATIONAL, STATE AND LOCAL CODES.
  2. PLEASE REFER TO PRODUCT MANUALS PRIOR TO INSTALLATION AND SITE PREPARATION WORK FOR FURTHER DETAILS.
  3. UNLESS OTHERWISE SPECIFIED, ALL DIMENSIONS ARE IN INCHES [MILLIMETERS].

THIS DRAWING AND SPECIFICATIONS HEREIN ARE THE PROPERTY OF SCHNEIDER ELECTRIC AND SHALL NOT BE COPIED, REPRODUCED OR USED IN WHOLE OR IN PART, AS THE BASIS FOR THE MANUFACTURE OR SALE OF ITEMS WITHOUT WRITTEN PERMISSION FROM SCHNEIDER ELECTRIC. THIS DRAWING IS BASED UPON LATEST AVAILABLE INFORMATION AND IS SUBJECT TO CHANGE WITHOUT NOTICE.



**TITLE:** SYMMETRA PX  
SYMMETRA PX 100 kW  
INPUT: 208V, 3PH  
OUTPUT: 208V, 100kW, 3PH, TOP & BOTTOM FEED  
BATTERY INTERNAL VIEW

**PROJECT:** DRAWINGS **SHEET** 10 OF 17

**DWG NO:** SY100K100FTBPDPM100F

**DRAWN BY:** SURAJ P 12-JAN-12

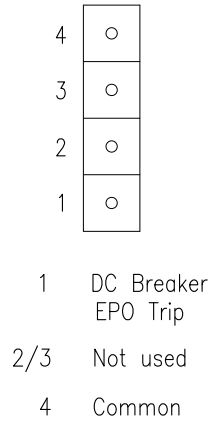
**ENGINEER:** K.S/C.F.P/J.S 19-MAR-12

**APPROVED BY:** B.SHERIDAN/F.DIOSA 19-MAR-12

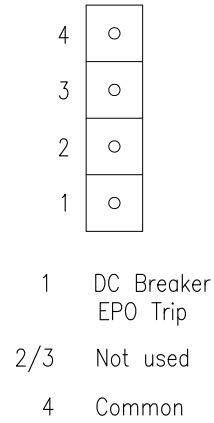
**REV.** 0

**THIRD ANGLE PROJECTION**

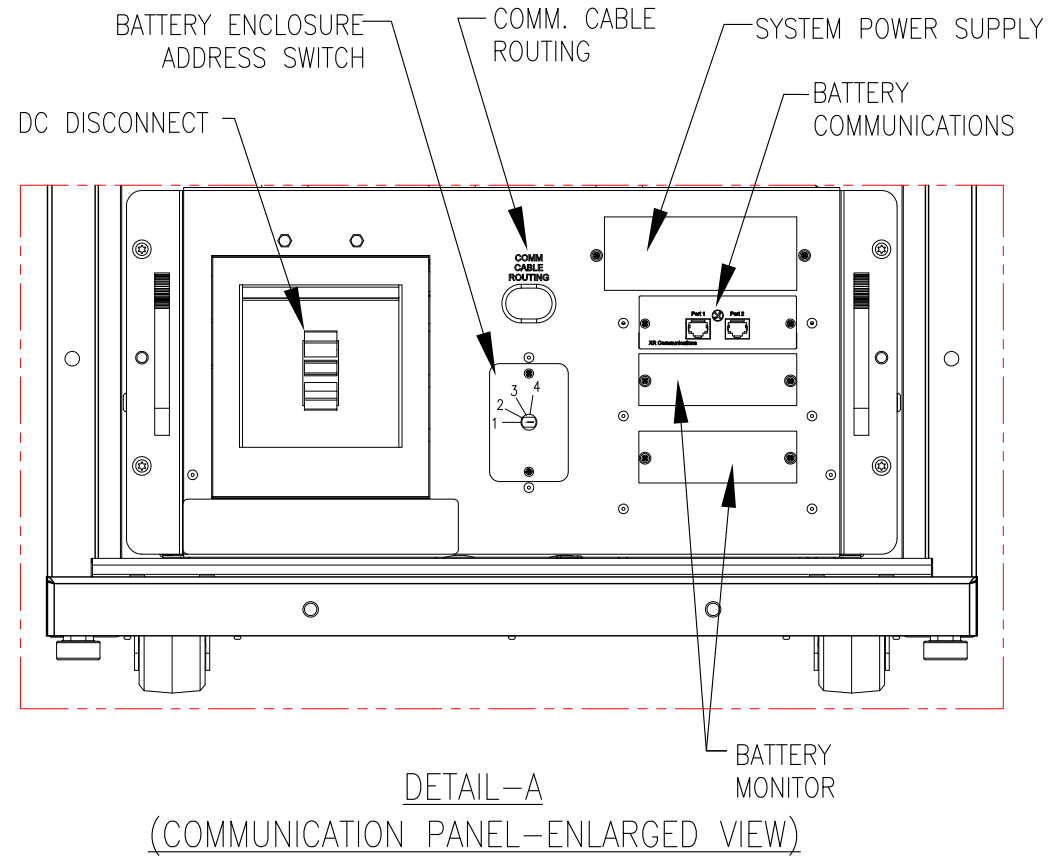
J1-Connection from UPS/XR



J3-Connection to next XR



EPO INTERFACE FOR DC BREAKER TRIP



NOTES:  
 1. INSTALLATION SHALL COMPLY WITH ALL APPLICABLE NATIONAL, STATE AND LOCAL CODES.  
 2. PLEASE REFER TO PRODUCT MANUALS PRIOR TO INSTALLATION AND SITE PREPARATION WORK FOR FURTHER DETAILS .

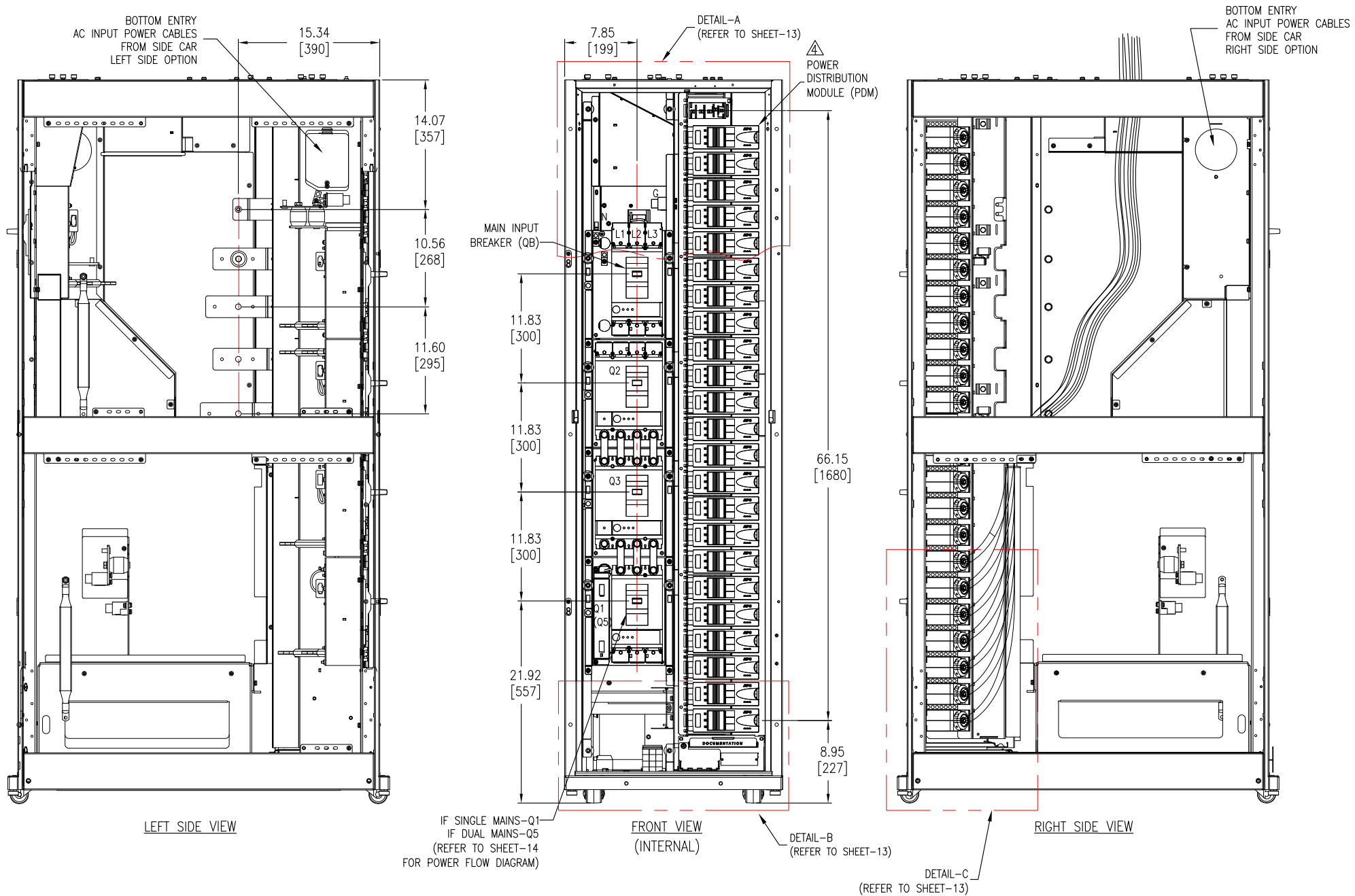
THIS DRAWING AND SPECIFICATIONS HEREIN ARE THE PROPERTY OF SCHNEIDER ELECTRIC AND SHALL NOT BE COPIED, REPRODUCED OR USED IN WHOLE OR IN PART, AS THE BASIS FOR THE MANUFACTURE OR SALE OF ITEMS WITHOUT WRITTEN PERMISSION FROM SCHNEIDER ELECTRIC. THIS DRAWING IS BASED UPON LATEST AVAILABLE INFORMATION AND IS SUBJECT TO CHANGE WITHOUT NOTICE.



TITLE: SYMMETRA PX  
 SYMMETRA PX 100 kW  
 INPUT: 208V, 3PH  
 OUTPUT: 208V, 100kW, 3PH, TOP & BOTTOM FEED  
 BATTERY WIRING DETAILS

PROJECT: DRAWINGS SHEET 11 OF 17

DWG NO:	SY100K100FTBPDPM100F	REV.	0
DRAWN BY:	SURAJ P	12-JAN-12	THIRD
ENGINEER:	K.S/C.F.P/J.S	19-MAR-12	ANGLE
APPROVED BY:	B.SHERIDAN/F.DIOSA	19-MAR-12	PROJECTION



**NOTES.**

1. INSTALLATION SHALL COMPLY WITH ALL APPLICABLE NATIONAL, STATE AND LOCAL CODES.
2. REFER TO PRODUCT DOCUMENTATION FOR ADDITIONAL DETAILS PRIOR TO INSTALLATION AND SITE PREPARATION WORK.
3. ALL DIMENSIONS ARE IN INCHES [MILLIMETERS].
- △ 4. ALL POWER DISTRIBUTION MODULES AND EXTENDER CABLES ARE NOT PART OF THIS SKU AND ARE ORDERED SEPARATELY. CONTACT SCHNEIDER ELECTRIC.

THIS DRAWING AND SPECIFICATIONS HEREIN ARE THE PROPERTY OF SCHNEIDER ELECTRIC AND SHALL NOT BE COPIED, REPRODUCED OR USED IN WHOLE OR IN PART, AS THE BASIS FOR THE MANUFACTURE OR SALE OF ITEMS WITHOUT WRITTEN PERMISSION FROM SCHNEIDER ELECTRIC. THIS DRAWING IS BASED UPON LATEST AVAILABLE INFORMATION AND IS SUBJECT TO CHANGE WITHOUT NOTICE.



**TITLE:** SYMMETRA PX 100 kW  
SYMMETRA PX 100 kW  
INPUT: 208V, 3PH  
OUTPUT: 208V, 100kW, 3PH, TOP & BOTTOM FEED  
PDU INTERNAL VIEW

**PROJECT:** DRAWINGS **SHEET** 12 OF 17

**DWG NO:** SY100K100FTBPDPM100F

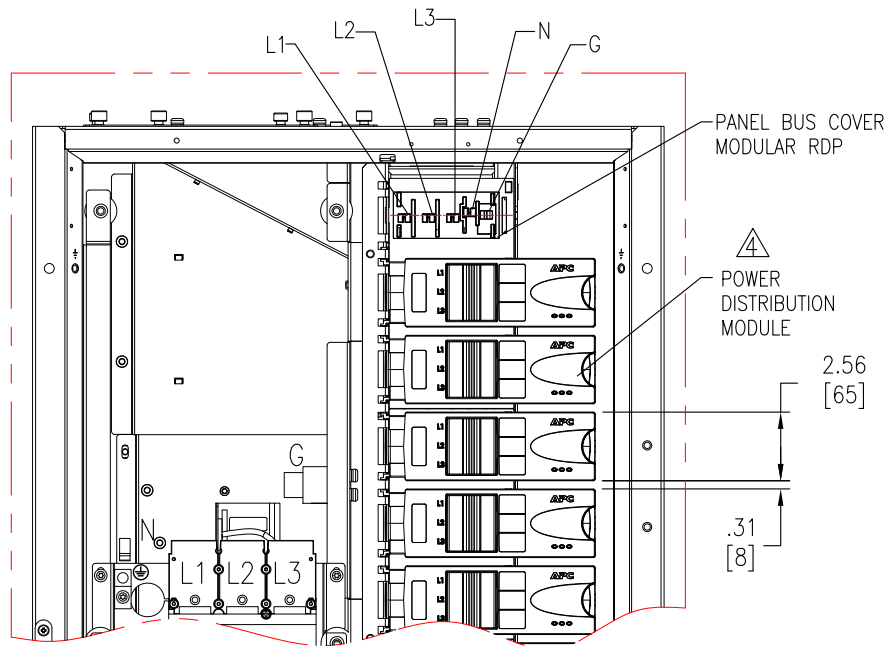
**DRAWN BY:** JAYAPRAKASH 27-JAN-16

**ENGINEER:** F SYED 27-JAN-16

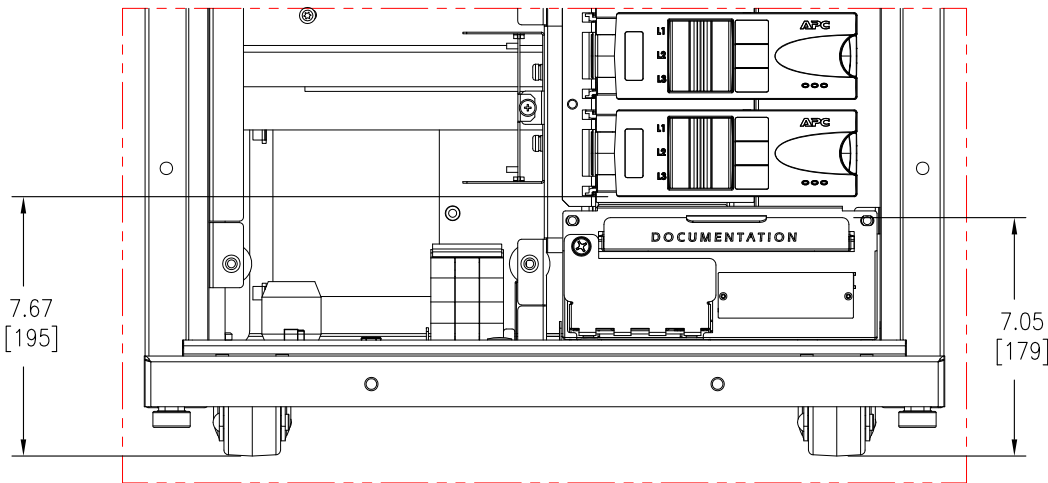
**APPROVED BY:** B.SHERIDAN 27-JAN-16

**REV.** 1

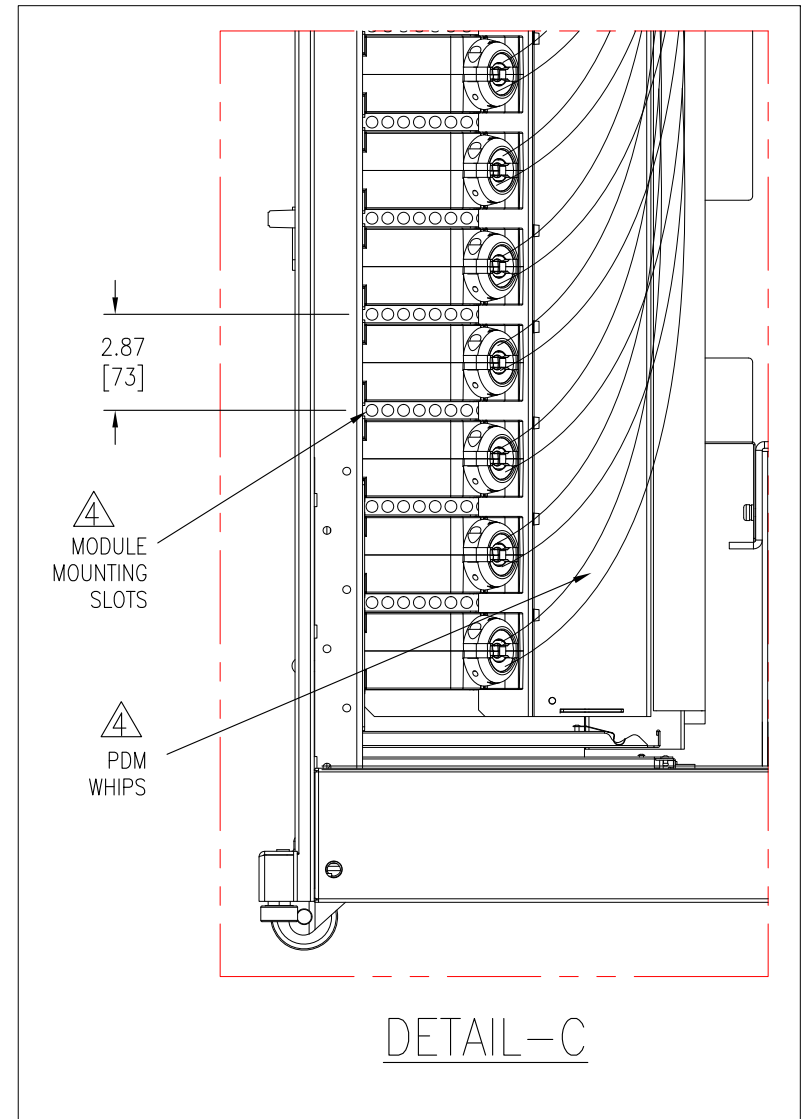
THIRD ANGLE PROJECTION



DETAIL-A



DETAIL-B



DETAIL-C

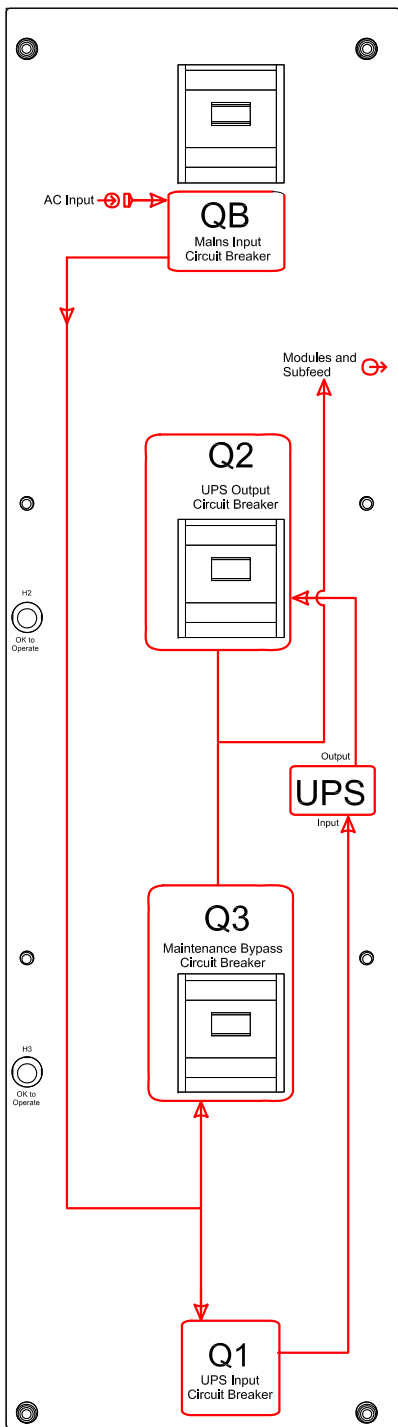
NOTES.

1. INSTALLATION SHALL COMPLY WITH ALL APPLICABLE NATIONAL, STATE AND LOCAL CODES.
2. REFER TO PRODUCT DOCUMENTATION FOR ADDITIONAL DETAILS PRIOR TO INSTALLATION AND SITE PREPARATION WORK.
3. ALL DIMENSIONS ARE IN INCHES [MILLIMETERS].
4. ALL POWER DISTRIBUTION MODULES AND EXTENDER CABLES ARE NOT PART OF THIS SKU AND ARE ORDERED SEPARATELY. CONTACT SCHNEIDER ELECTRIC.

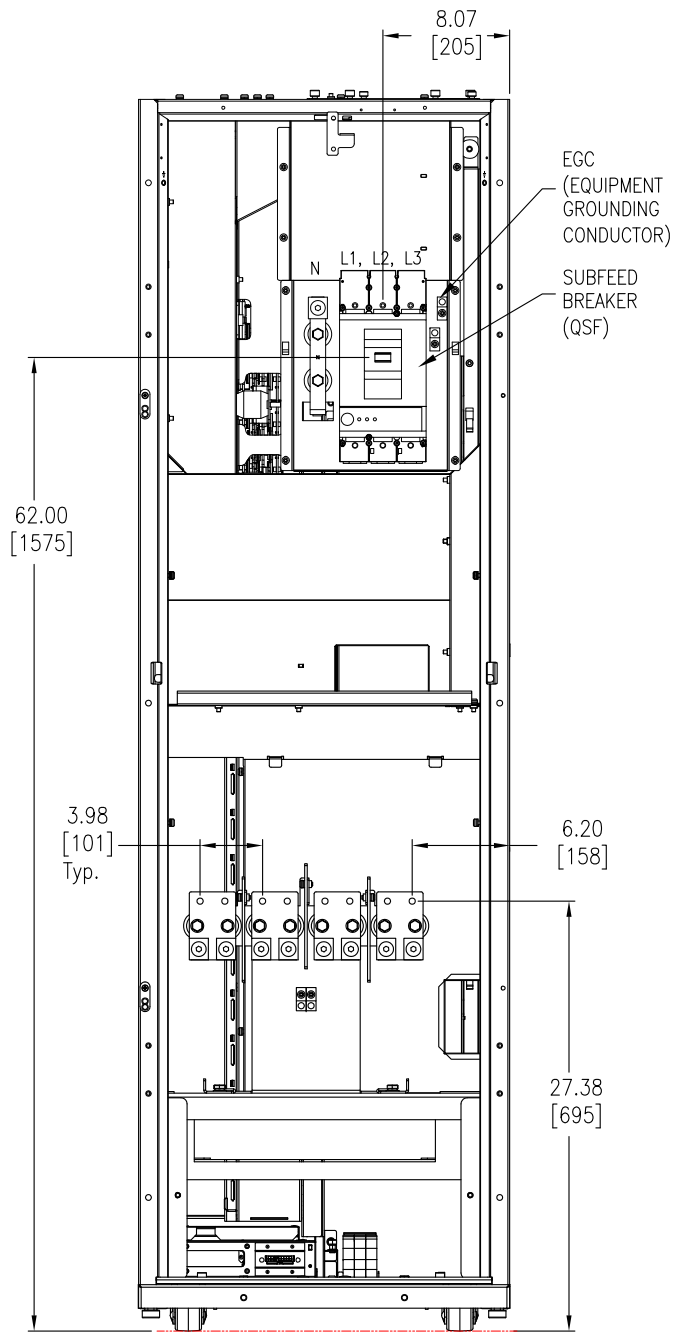
THIS DRAWING AND SPECIFICATIONS HEREIN ARE THE PROPERTY OF SCHNEIDER ELECTRIC AND SHALL NOT BE COPIED, REPRODUCED OR USED IN WHOLE OR IN PART, AS THE BASIS FOR THE MANUFACTURE OR SALE OF ITEMS WITHOUT WRITTEN PERMISSION FROM SCHNEIDER ELECTRIC. THIS DRAWING IS BASED UPON LATEST AVAILABLE INFORMATION AND IS SUBJECT TO CHANGE WITHOUT NOTICE.



TITLE: SYMMETRA PX SYMMETRA PX 100 kW INPUT: 208V, 3PH OUTPUT: 208V, 100kW, 3PH, TOP & BOTTOM FEED PDU INTERNAL DETAILS		DWG NO: SY100K100FTBPDPM100F		REV. 1
PROJECT: DRAWINGS		DRAWN BY: JAYAPRAKASH	27-JAN-16	THIRD
SHEET 13 OF 17		ENGINEER: F SYED	27-JAN-16	ANGLE
		APPROVED BY: B.SHERIDAN	27-JAN-16	PROJECTION



DETAIL-D



REAR VIEW

THIS DRAWING AND SPECIFICATIONS HEREIN ARE THE PROPERTY OF SCHNEIDER ELECTRIC AND SHALL NOT BE COPIED, REPRODUCED OR USED IN WHOLE OR IN PART, AS THE BASIS FOR THE MANUFACTURE OR SALE OF ITEMS WITHOUT WRITTEN PERMISSION FROM SCHNEIDER ELECTRIC. THIS DRAWING IS BASED UPON LATEST AVAILABLE INFORMATION AND IS SUBJECT TO CHANGE WITHOUT NOTICE.



TITLE: SYMMETRA PX  
SYMMETRA PX 100 kW  
INPUT: 208V, 3PH  
OUTPUT: 208V, 100kW, 3PH, TOP & BOTTOM FEED  
PDU INTERNAL DETAILS & REAR VIEW

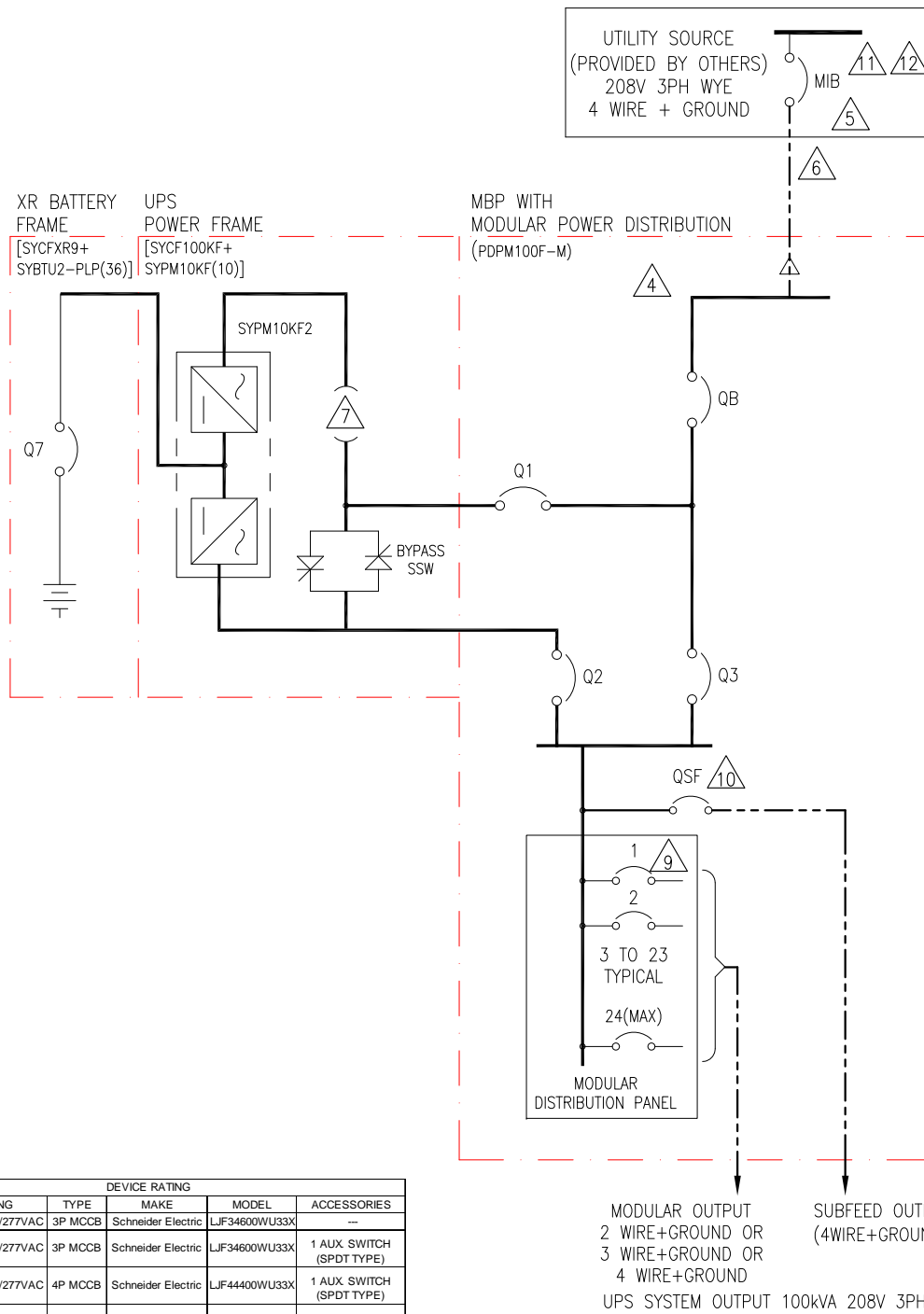
DWG NO: SY100K100FTBPDPM100F  
DRAWN BY: JAYAPRAKASH  
ENGINEER: F SYED  
APPROVED BY: B.SHERIDAN

REV. 1  
THIRD ANGLE  
PROJECTION

NOTES:

1. INSTALLATION SHALL COMPLY WITH ALL APPLICABLE NATIONAL, STATE AND LOCAL CODES.
2. REFER TO PRODUCT MANUALS PRIOR TO INSTALLATION AND SITE PREPARATION WORK FOR FURTHER DETAILS.
3. UNLESS OTHERWISE SPECIFIED, ALL DIMENSIONS ARE IN INCHES [MILLIMETERS].





**LEGEND:**  
 - - - - - AC CABLE - PROVIDED BY OTHERS

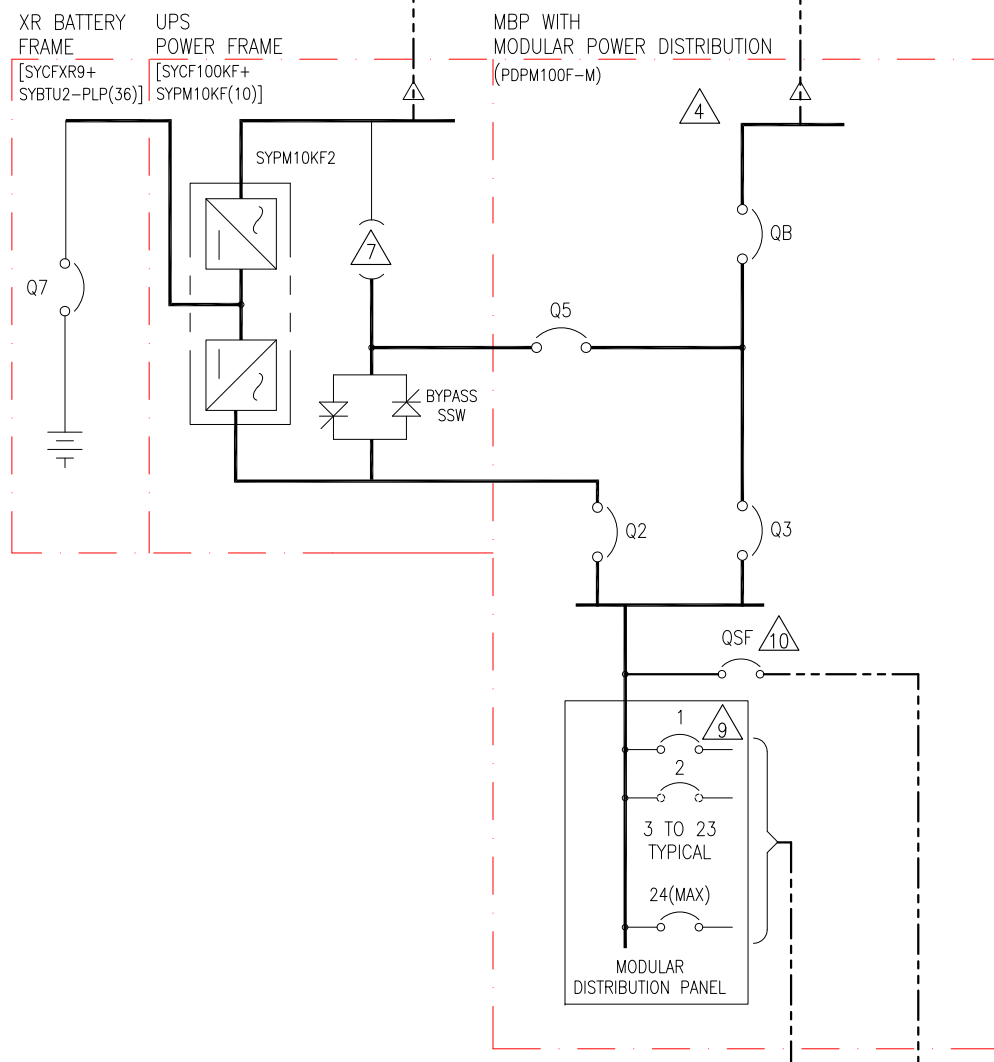
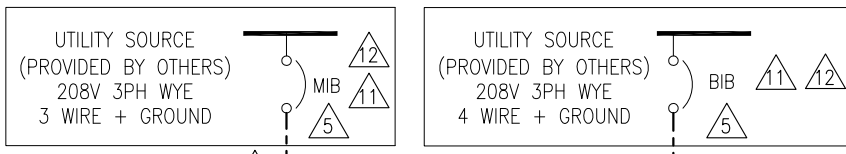
- NOTES:**
- INSTALLATION SHALL COMPLY WITH ALL APPLICABLE LOCAL AND NATIONAL CODES.
  - REFER TO PRODUCT MANUALS FOR ADDITIONAL DETAILS.
  - DRAWING DEPICTS POWER SYSTEM CONNECTIONS AND IS NOT REPRESENTATIVE OF PHYSICAL LAYOUT, PLEASE REFER TO MECHANICAL DRAWINGS FOR PHYSICAL LAYOUT.
  - MAXIMUM AVAILABLE FAULT CURRENT IS 30KAIC.
  - AC SOURCE TO BE 208VAC 3PH WYE 3 OR 4 WIRE+GROUND (CONTACT Schneider Electric IF OTHER).
  - AC CABLING TO BE 600V RATED, 3 OR 4 WIRE+GROUND.
  - SINGLE MAINS CONFIGURATION IS A DEFAULT. REFER TO SHEET-16 FOR DUAL MAINS.
  - THIS DRAWING SHOWS MINIMUM NUMBER OF XR BATTERY FRAMES. MAXIMUM (4) XR BATTERY FRAMES CAN BE BAYED TO UPS.
  - DISTRIBUTION MODULES ARE NOT PART OF PDPM100F6F-M, CAN BE PURCHASED SEPARATELY FROM Schneider Electric.
  - SEE INSTALLATION MANUAL FOR RECOMMENDED SETTINGS.
  - REFER TO SHEET-17 FOR RECOMMENDED OCPD RATINGS.
  - FOR PROPER INSTALLATION OF EPO, MIB BREAKER MUST BE INTERRUPTED UPON OF THE EPO BUTTON. A SHUNT TRIP COIL MAY THEREFORE BE NECESSARY FOR THIS PURPOSE. FOR MORE DETAILS, SEE EPO SECTION IN THE INSTALLATION MANUAL

DEVICE RATING					
DEVICE	RATING	TYPE	MAKE	MODEL	ACCESSORIES
QB	600AF, 480/277VAC	3P MCCB	Schneider Electric	LJF34600WU33X	---
Q1	600AF, 480/277VAC	3P MCCB	Schneider Electric	LJF34600WU33X	1 AUX SWITCH (SPDT TYPE)
Q2	400AF, 480/277VAC	4P MCCB	Schneider Electric	LJF44400WU33X	1 AUX SWITCH (SPDT TYPE)
Q3	400AF, 480/277VAC	4P MCCB	Schneider Electric	LJF44400WU33X	1 AUX SWITCH (SPDT TYPE)
QSF	400AF, 600V	3P MCCB	Schneider Electric	LJF36400CU33X	1 AUX SWITCH (SPDT TYPE)
Q7	320A, 500VDC	3P DC BREAKER	ABB	T5N320TWS4	1-SHUNT TRIP (110-125VAC/DC) 1- AUX CONTACT (1 FORM C + 1 BA)

THIS DRAWING AND SPECIFICATIONS HEREIN ARE THE PROPERTY OF SCHNEIDER ELECTRIC AND SHALL NOT BE COPIED, REPRODUCED OR USED IN WHOLE OR IN PART, AS THE BASIS FOR THE MANUFACTURE OR SALE OF ITEMS WITHOUT WRITTEN PERMISSION FROM SCHNEIDER ELECTRIC. THIS DRAWING IS BASED UPON LATEST AVAILABLE INFORMATION AND IS SUBJECT TO CHANGE WITHOUT NOTICE.



<b>TITLE:</b> SYMMETRA PX 100 kW INPUT: 208V, 3PH OUTPUT: 208V, 100kW, 3PH, TOP & BOTTOM FEED ONE LINE DIAGRAM-SINGLE MAINS		<b>DWG NO:</b> SY100K100FTBPDPM100F		<b>REV.</b> 2
<b>PROJECT:</b> DRAWINGS		<b>DRAWN BY:</b> JAYAPRAKASH	27-JAN-16	ANGLE
<b>SHEET</b> 15 OF 17		<b>ENGINEER:</b> A WARNER	27-JAN-16	PROJECTION
		<b>APPROVED BY:</b> B.SHERIDAN	27-JAN-16	NA



**LEGEND:**  
 - - - - - AC CABLE - PROVIDED BY OTHERS

- NOTES:**
- INSTALLATION SHALL COMPLY WITH ALL APPLICABLE LOCAL AND NATIONAL CODES.
  - REFER TO PRODUCT MANUALS FOR ADDITIONAL DETAILS.
  - DRAWING DEPICTS POWER SYSTEM CONNECTIONS AND IS NOT REPRESENTATIVE OF PHYSICAL LAYOUT, PLEASE REFER TO MECHANICAL DRAWINGS FOR PHYSICAL LAYOUT.
  - MAXIMUM AVAILABLE FAULT CURRENT IS 30kAIC.
  - AC SOURCE TO BE 208VAC 3PH WYE 3 OR 4 WIRE+GROUND (CONTACT Schneider Electric IF OTHER).
  - AC CABLING TO BE 600V RATED, 3 OR 4 WIRE+GROUND.
  - SINGLE MAINS CONFIGURATION IS A DEFAULT. FOR DUAL MAINS CONFIGURATION REMOVE THE 3 SHORTING STRAPS/WIRES.
  - THIS DRAWING SHOWS MINIMUM NUMBER OF XR BATTERY FRAMES. MAXIMUM (4) XR BATTERY FRAMES CAN BE BAYED TO UPS.
  - DISTRIBUTION MODULES ARE NOT PART OF PDPM100F6F-M, CAN BE PURCHASED SEPARATELY FROM Schneider Electric.
  - SEE INSTALLATION MANUAL FOR RECOMMENDED SETTINGS.
  - REFER TO SHEET-17 FOR RECOMMENDED OCPD RATINGS.
  - FOR PROPER INSTALLATION OF EPO, MIB AND BIB BREAKER MUST BE INTERRUPTED UPON OF THE EPO BUTTON. A SHUNT TRIP COIL MAY THEREFORE BE NECESSARY FOR THIS PURPOSE. FOR MORE DETAILS, SEE EPO SECTION IN THE INSTALLATION MANUAL.

MODULAR OUTPUT  
 2 WIRE+GROUND OR  
 3 WIRE+GROUND OR  
 4 WIRE+GROUND

SUBFEED OUTPUT  
 (4WIRE+GROUND)

UPS SYSTEM OUTPUT 100kVA 208V 3PH

DEVICE RATING					
DEVICE	RATING	TYPE	MAKE	MODEL	ACCESSORIES
QB	600AF, 480/277VAC	3P MCCB	Schneider Electric	LJF34600WU33X	---
Q5	600AF, 480/277VAC	3P MCCB	Schneider Electric	LJF34600WU33X	1 AUX SWITCH (SPDT TYPE)
Q2	400AF, 480/277VAC	4P MCCB	Schneider Electric	LJF44400WU33X	1 AUX SWITCH (SPDT TYPE)
Q3	400AF, 480/277VAC	4P MCCB	Schneider Electric	LJF44400WU33X	1 AUX SWITCH (SPDT TYPE)
QSF	400AF, 600V	3P MCCB	Schneider Electric	LJF36400CU33X	1 AUX SWITCH (SPDT TYPE)
Q7	320A, 500VDC	3P DC BREAKER	ABB	TSN320TWAS4	1-SHUNT TRIP (110-125VAC/DC) 1 - AUX CONTACT (1 FORM C + 1 BA)

THIS DRAWING AND SPECIFICATIONS HEREIN ARE THE PROPERTY OF SCHNEIDER ELECTRIC AND SHALL NOT BE COPIED, REPRODUCED OR USED IN WHOLE OR IN PART, AS THE BASIS FOR THE MANUFACTURE OR SALE OF ITEMS WITHOUT WRITTEN PERMISSION FROM SCHNEIDER ELECTRIC. THIS DRAWING IS BASED UPON LATEST AVAILABLE INFORMATION AND IS SUBJECT TO CHANGE WITHOUT NOTICE.



**TITLE:** SYMMETRA PX  
 SYMMETRA PX 100 kW  
 INPUT: 208V, 3PH  
 OUTPUT: 208V, 100kW, 3PH, TOP & BOTTOM FEED  
 ONE LINE DIAGRAM-DUAL MAINS

**PROJECT:** DRAWINGS **SHEET:** 16 OF 17

**DWG NO:** SY100K100FTBPDPM100F **REV.** 2

**DRAWN BY:** JAYAPRAKASH **DATE:** 27-JAN-16 **ANGLE:** PROJECTION

**ENGINEER:** A WARNER **DATE:** 27-JAN-16

**APPROVED BY:** B.SHERIDAN **DATE:** 27-JAN-16

## Symmetra® PX 100K UPS Frame Site Planning Data - w/ Modular PDU - w/o Transformer

UPS Rating			Voltage		Rectifier AC Input MIB Dual or Single Feed <sup>4</sup>						Bypass AC Input BIB Dual Feed <sup>4</sup>						External Battery System <sup>5</sup>					AC Output	
					Current		Recommendations <sup>3, 9, 10</sup>				Current		Recommendations <sup>3, 9</sup>				Nominal VDC	Battery kW	Current @ Nom. VDC	Recommendations <sup>3, 9</sup>		Current	
UPS Frame Rating	Qty of 10 kW Power Modules <sup>8</sup>	UPS Rating kVA/kW	In put <sup>1</sup>	Output <sup>2</sup>	Full Load	Max. <sup>6</sup>	100% OCPD	100% Cable	80% OCPD	80% Cable	NOM.	Max. <sup>7</sup>	100% OCPD	100% Cable	80% OCPD	80% Cable							100% OCPD
100kVA / 100kW 100K Frame	1	10	208	208	33	36	40A	1x8	45A	1x8	28	35	30A	1x8	35A	1x8	2x 192	11	28	30A	1x8	28	35
	2	20	208	208	66	72	80A	1x4	90A	1x4	56	69	60A	1x6	70A	1x4	2x 192	22	56	60A	1x6	56	70
	3	30	208	208	100	108	110A	1x2	125A	1x1	83	104	90A	1x4	110A	1x2	2x 192	32	84	90A	1x4	84	105
	4	40	208	208	133	144	150A	1x1/0	175A	1x2/0	111	139	125A	1x2	150A	1x1/0	2x 192	43	113	125A	1x2	112	140
	5	50	208	208	166	180	200A	1x3/0	225A	1x4/0	139	174	150A	1x1/0	175A	1x2/0	2x 192	54	141	150A	1x1/0	140	175
	6	60	208	208	199	216	225A	1x4/0	250A	1x250	167	208	175A	1x2/0	225A	1x4/0	2x 192	65	169	175A	1x2/0	168	210
	7	70	208	208	232	252	300A	1x250	300A	1x350	195	243	200A	1x3/0	250A	1x250	2x 192	76	197	200A	1x3/0	196	245
	8	80	208	208	266	288	300A	1x350	350A	1x400	222	278	225A	1x4/0	300A	1x300	2x 192	86	225	225A	1x4/0	224	280
	9	90	208	208	299	324	350A	1x400	400A	1x500	250	312	300A	1x250	350A	1x400	2x 192	97	253	300A	1x250	252	315
	10	100	208	208	332	360	400A	1x500	450A	2x4/0	278	347	300A	1x300	350A	1x500	2x 192	108	282	300A	1x300	278	347

### Symmetra® PX

Notes. 208Y/120 V (Transformerless) Modular PDU: PDPM100F-M

1. Mains Input source (s) must be 208V Wye Solidly grounded. Contact Schneider Electric if other.
2. Output is either 208V wye 3-wire + Ground or 4-wire + GROUND. Bypass source shall be 4-wire+G.
3. Recommended cables are THHN AWG/kcmil minimum requirement in raceway, sized for 30°C environment, 75°C terminations, PFC load, and three (3) current carrying conductors per circuit. All Cabling must comply with installation site conditions and any appl
4. Either single feed MIB or dual feed BIB input for the bypass shall be 4-wire+G. Rectifier MIB Input for Dual Feed shall be 3-wire+G. See respective one-line drawings for further clarification.
5. Contact Schneider Electric for assistance with all external battery designs. Maximum allowed DC voltage drop is 1 VDC.
6. Electronic Input current Limit.
7. This is the UPS short time rating of 125% Overload for 10 minutes. Actual short time performance may be limited by the overcurrent protective device selected.
8. For maximum scalability or future expansion it is recommended that the UPS frames be installed at their full ratings - see bold highlighted data.
9. All OCPD's and cabling are by others.
10. Dual feed only for mains 1 input. See Bypass AC Input for mains 2 input.
11. OCPD = Over Current Protective Device.
12. Final selections are responsibility of Engineer of record based on installed conditions and SCC/ Selective co-ordination/ arc-flash analysis.

THIS DRAWING AND SPECIFICATIONS HEREIN ARE THE PROPERTY OF SCHNEIDER ELECTRIC AND SHALL NOT BE COPIED, REPRODUCED OR USED IN WHOLE OR IN PART, AS THE BASIS FOR THE MANUFACTURE OR SALE OF ITEMS WITHOUT WRITTEN PERMISSION FROM SCHNEIDER ELECTRIC. THIS DRAWING IS BASED UPON LATEST AVAILABLE INFORMATION AND IS SUBJECT TO CHANGE WITHOUT NOTICE.



TITLE: SYMMETRA PX  
SYMMETRA PX 100 kW  
INPUT: 208V, 3PH  
OUTPUT: 208V, 100kW, 3PH, TOP & BOTTOM FEED  
SITE PLANNING DATA  
PROJECT: DRAWINGS SHEET 17 OF 17

DWG NO: SY100K100FTBPDPM100F  
DRAWN BY: JAYAPRAKASH 27-JAN-16  
ENGINEER: A WARNER 27-JAN-16  
APPROVED BY: B.SHERIDAN 27-JAN-16

REV. 1  
ANGLE  
PROJECTION  
NA