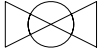
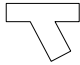


COOLING DISTRIBUTION UNIT 12 CIRCUIT, BOTTOM/TOP MAINS, TOP DISTRIBUTION PIPING Drawing Package

Sheet No.	Component /Detail	Description
1	Draw ing Guide	Cooling Distribution Unit 12 Circuit, Bottom/Top Mains, Top Distribution Piping Draw ing Guide
2	Dimetric View	Cooling Distribution Unit 12 Circuit, Bottom/Top Mains, Top Distribution Piping Dimetric View
3	General Arrangement	Cooling Distribution Unit 12 Circuit, Bottom/Top Mains, Top Distribution Piping General Arrangement
4	Top and Bottom View s	Cooling Distribution Unit 12 Circuit, Bottom/Top Mains, Top Distribution Piping Top and Bottom View s
5	Internal View s Front side	Cooling Distribution Unit 12 Circuit, Bottom/Top Mains, Top Distribution Piping Internal View s Front side
6	Details Accessories	Cooling Distribution Unit 12 Circuit, Bottom/Top Mains, Top Distribution Piping Details Accessories
7	Supply Return Connections	Cooling Distribution Unit 12 Circuit, Bottom/Top Mains, Top Distribution Piping Supply Return Connections
8	Piping Diagram	Cooling Distribution Unit 12 Circuit, Bottom/Top Mains, Top Distribution Piping Piping Diagram

LEGEND	
SYMBOL	DESCRIPTION
	SHUT OFF VALVE
	Y-STRAINER

THIS DRAWING AND SPECIFICATIONS HEREIN ARE THE PROPERTY OF SCHNEIDER ELECTRIC AND SHALL NOT BE COPIED, REPRODUCED OR USED IN WHOLE OR IN PART, AS THE BASIS FOR THE MANUFACTURE OR SALE OF ITEMS WITHOUT WRITTEN PERMISSION FROM SCHNEIDER ELECTRIC. THIS DRAWING IS BASED UPON LATEST AVAILABLE INFORMATION AND IS SUBJECT TO CHANGE WITHOUT NOTICE.



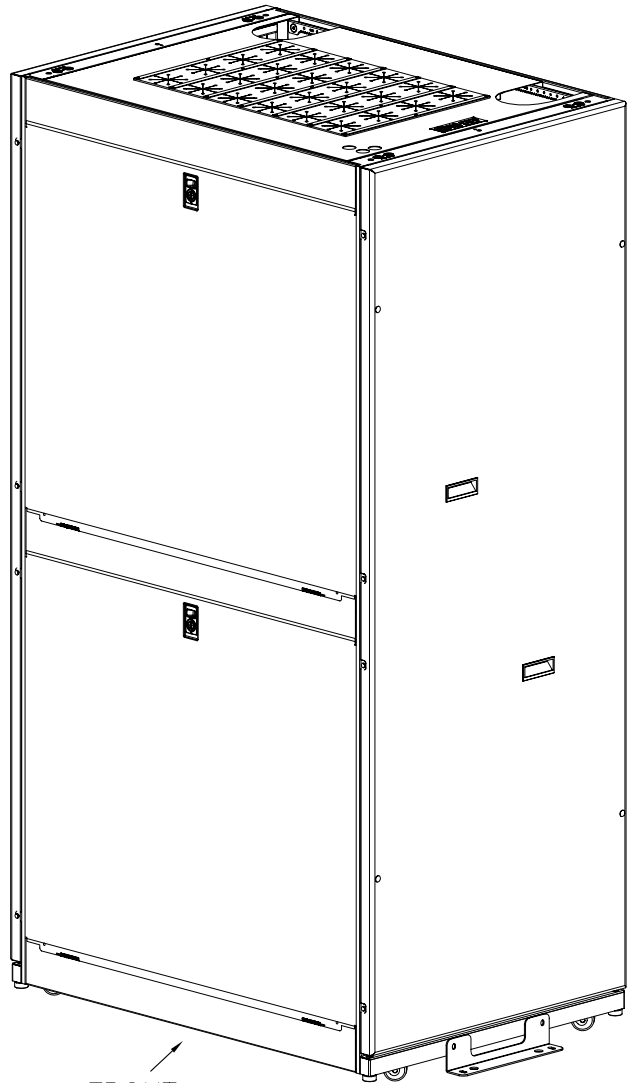
TITLE: InRow CHILLED WATER
COOLING DISTRIBUTION UNIT 12 CIRCUIT
BOTTOM/TOP MAINS
TOP DISTRIBUTION PIPING
DRAWING GUIDE

PROJECT: DRAWINGS SHEET 1 OF 8

DWG NO: ACFD12-T
DRAWN: NAGESH S
ENGINEER: M.BROWN/J.HUFFMAN

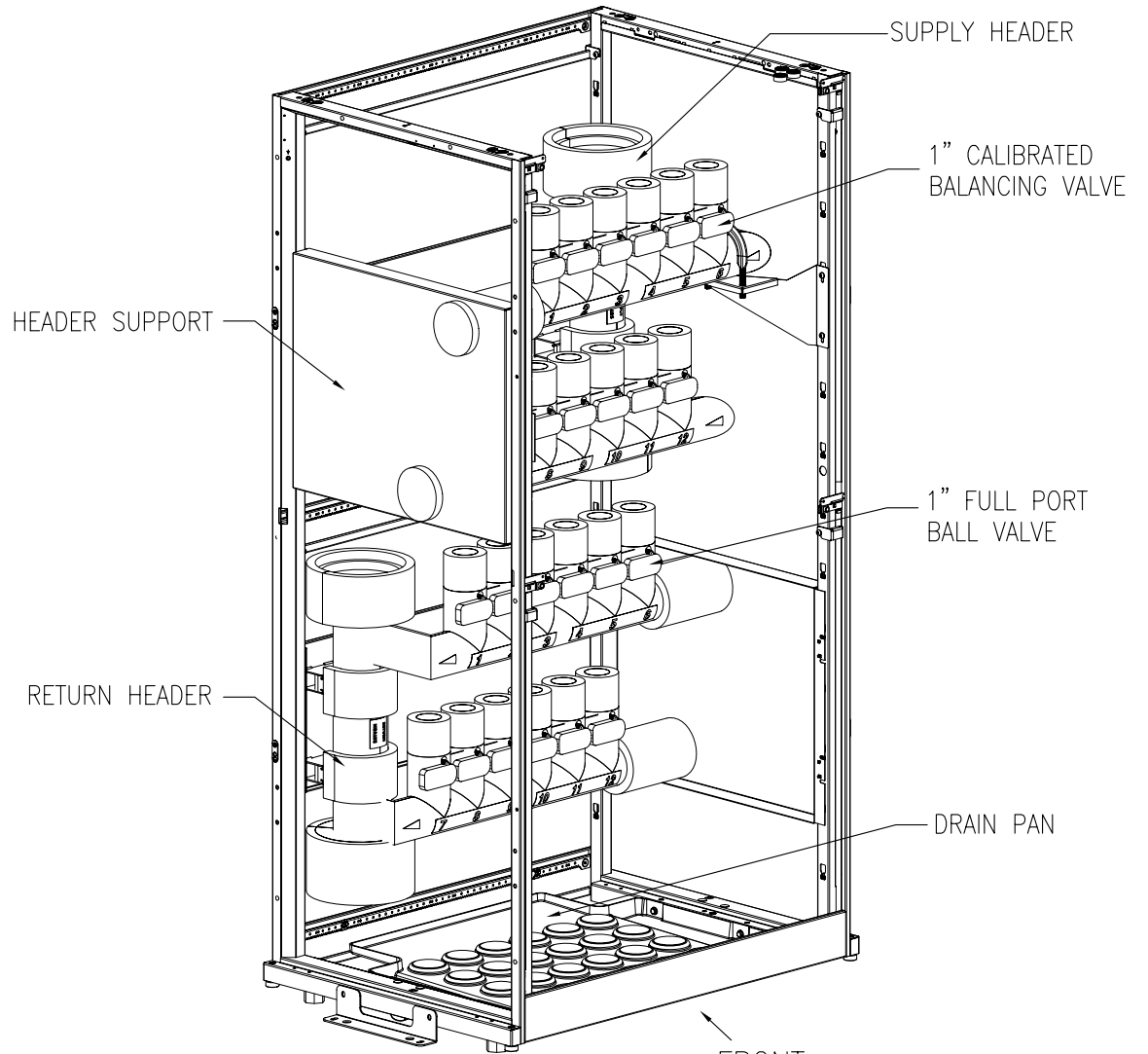
APPROVED: C.CUMMISKEY/C.ZALDWAR

REV: 0
17-FEB-12
21-MAR-12
21-MAR-12
FIRST ANGLE PROJECTION



FRONT

DIMETRIC VIEW
WITH PANELS



HEADER SUPPORT

RETURN HEADER

SUPPLY HEADER

1" CALIBRATED
BALANCING VALVE

1" FULL PORT
BALL VALVE

DRAIN PAN

FRONT

DIMETRIC VIEW
PANELS REMOVED FOR CLARITY

NOTES:

1. INSTALLATION SHALL COMPLY WITH NATIONAL, STATE AND LOCAL ELECTRICAL REGULATIONS.
2. PLEASE REFER TO PRODUCT MANUALS PRIOR TO INSTALLATION AND SITE PREPARATION WORK FOR FURTHER DETAILS.

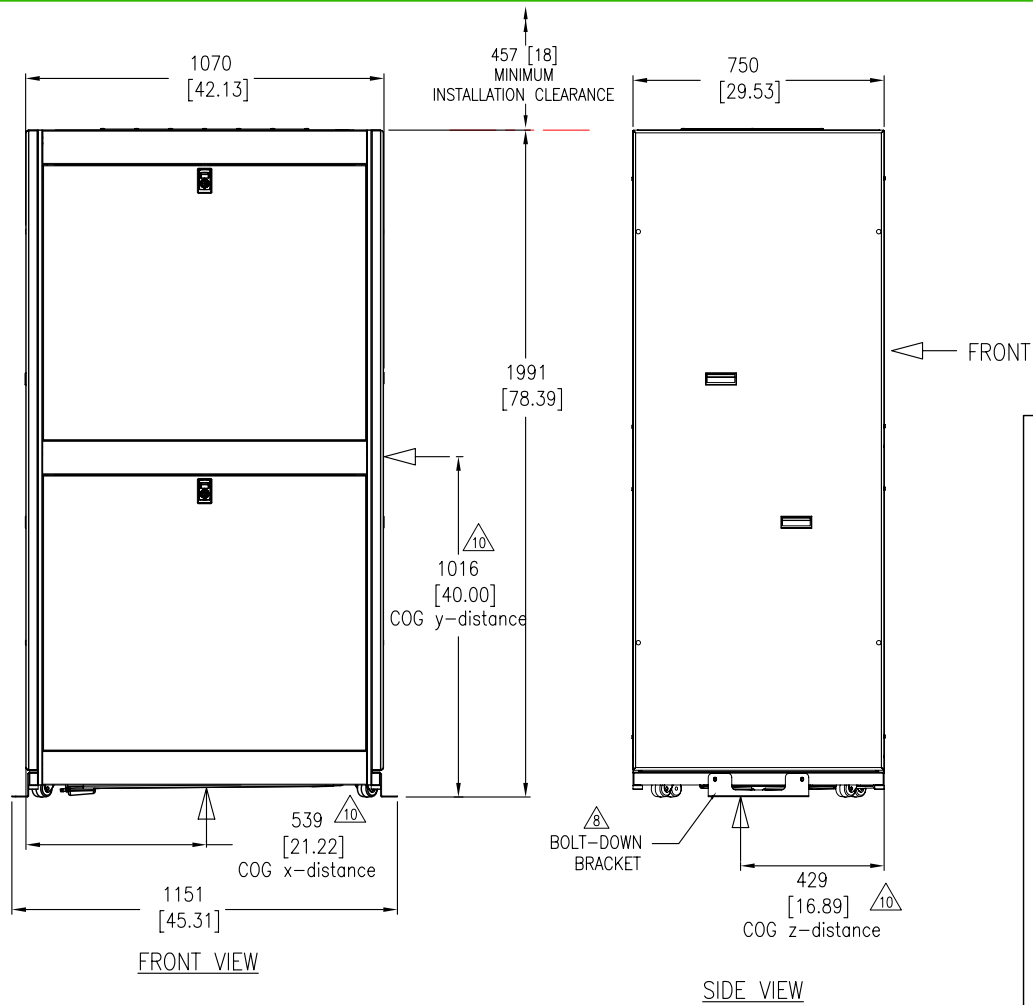
THIS DRAWING AND SPECIFICATIONS HEREIN ARE THE PROPERTY OF SCHNEIDER ELECTRIC AND SHALL NOT BE COPIED, REPRODUCED OR USED IN WHOLE OR IN PART, AS THE BASIS FOR THE MANUFACTURE OR SALE OF ITEMS WITHOUT WRITTEN PERMISSION FROM SCHNEIDER ELECTRIC. THIS DRAWING IS BASED UPON LATEST AVAILABLE INFORMATION AND IS SUBJECT TO CHANGE WITHOUT NOTICE.



TITLE: InRow CHILLED WATER
COOLING DISTRIBUTION UNIT 12 CIRCUIT
BOTTOM/TOP MAINS
TOP DISTRIBUTION PIPING
ISOMETRIC VIEW (EXTERNAL)

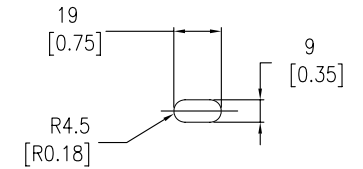
PROJECT: DRAWINGS SHEET 2 OF 8

DWG NO:	ACFD12-T	REV:	0
DRAWN:	NAGESH S	17-FEB-12	FIRST
ENGINEER:	M.BROWN/J.HUFFMAN	21-MAR-12	ANGLE
APPROVED:	C.CUMMISKEY/C.ZALDWAR	21-MAR-12	PROJECTION

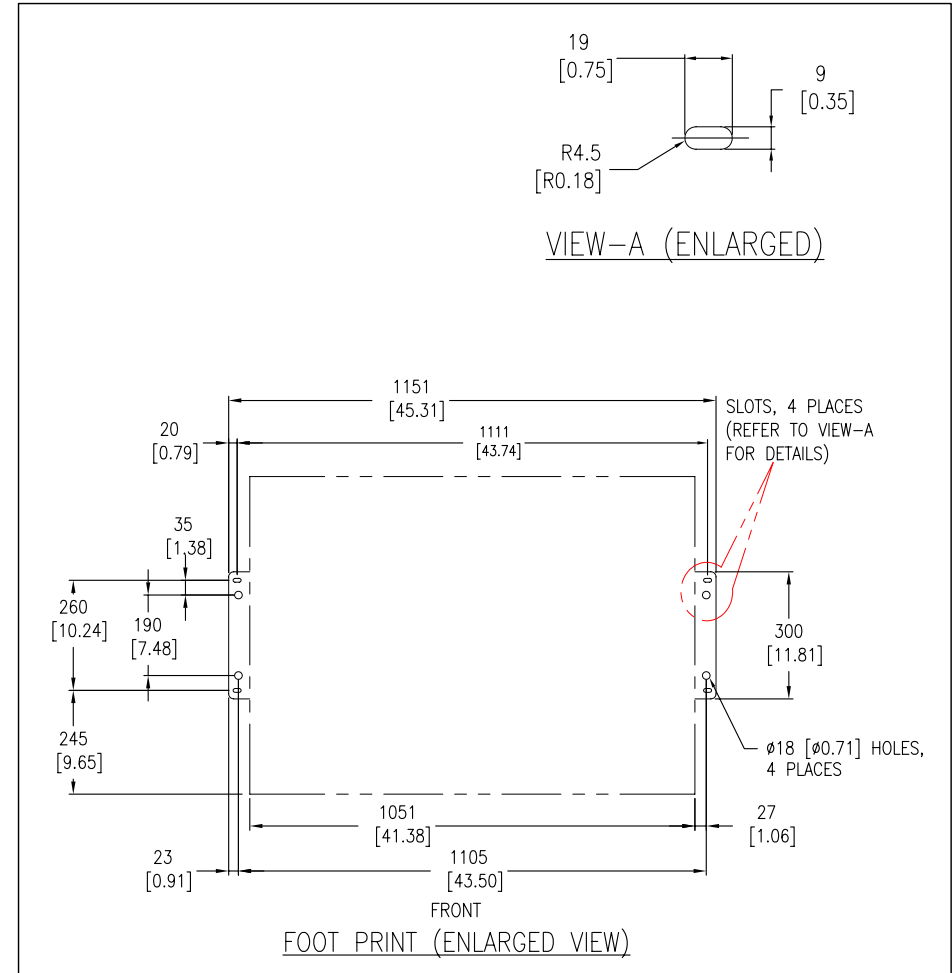


- NOTES:**
1. INSTALLATION SHALL COMPLY WITH NATIONAL, STATE AND LOCAL ELECTRICAL REGULATIONS.
 2. PLEASE REFER TO PRODUCT MANUALS PRIOR TO INSTALLATION AND SITE PREPARATION WORK FOR FURTHER DETAILS.
 3. ALL DIMENSIONS ARE IN MILLIMETERS [INCHES].
 4. TOP PIPING CONFIGURATION.
 5. FRONT ACCESS IS REQUIRED FOR SERVICE.
 6. NET WEIGHT OF UNIT IS 269.56 kg [593LBS] & OPERATING WEIGHT OF UNIT IS 314.55 kg [692LBS].
 7. FLOOR LOADING: 396kg/meter² [81LBS/ft²].
 - △ 8. IF ADDITIONAL STABILITY IS REQUIRED, USE THE 870-11101A BRACKET TO ANCHOR THE UNIT TO THE FLOOR.
 9. MAIN PIPES CAN BE CONFIGURED EITHER FROM THE TOP OR THE BOTTOM OF THE UNIT.
 - △ 10. THIS INFORMATION PROVIDED CONSERVATIVE CENTER OF GRAVITY.

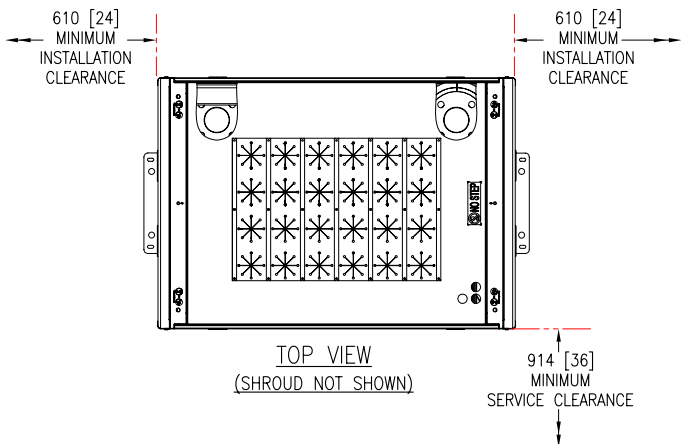
← FRONT



VIEW-A (ENLARGED)



FRONT
FOOT PRINT (ENLARGED VIEW)



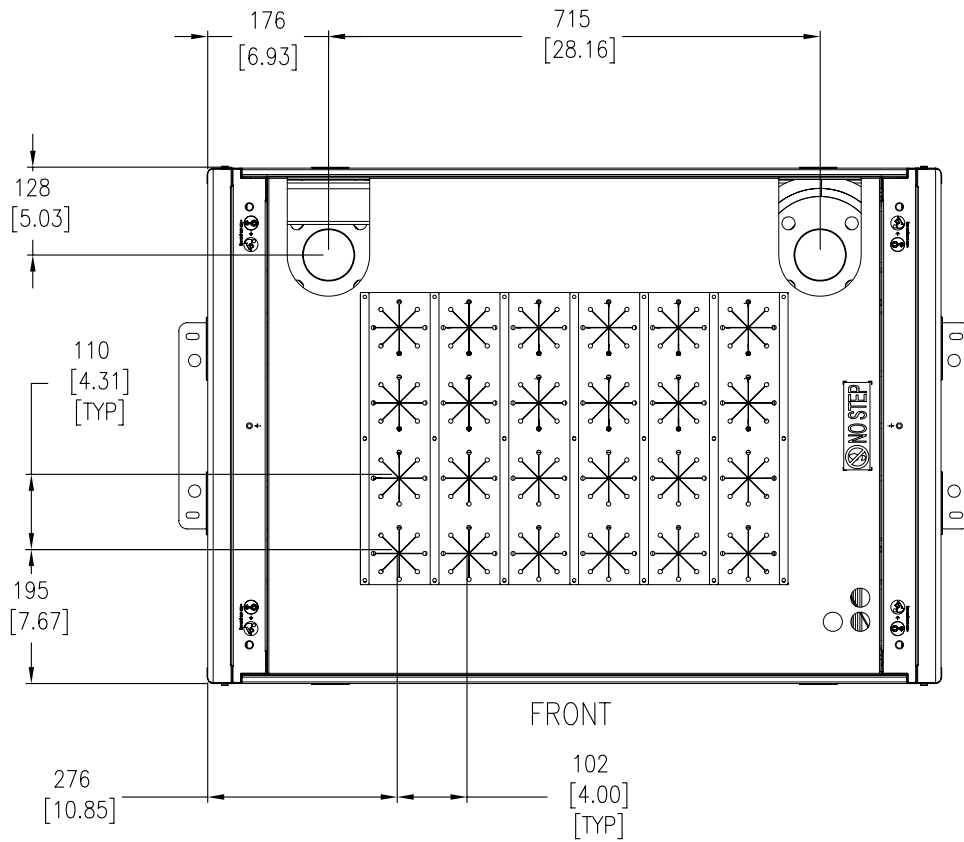
TOP VIEW
(SHROUD NOT SHOWN)

THIS DRAWING AND SPECIFICATIONS HEREIN ARE THE PROPERTY OF SCHNEIDER ELECTRIC AND SHALL NOT BE COPIED, REPRODUCED OR USED IN WHOLE OR IN PART, AS THE BASIS FOR THE MANUFACTURE OR SALE OF ITEMS WITHOUT WRITTEN PERMISSION FROM SCHNEIDER ELECTRIC. THIS DRAWING IS BASED UPON LATEST AVAILABLE INFORMATION AND IS SUBJECT TO CHANGE WITHOUT NOTICE.

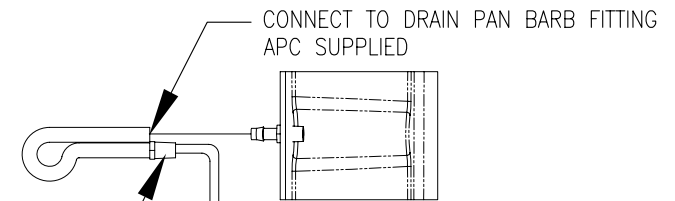
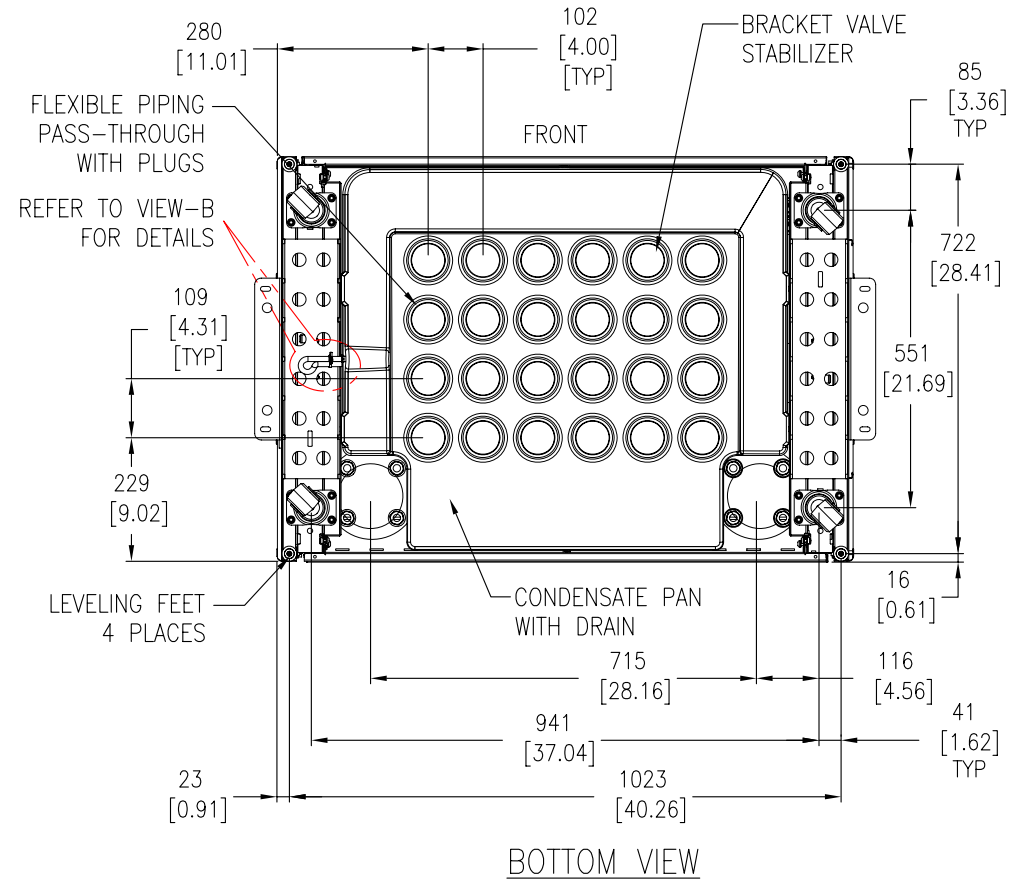


TITLE: InRow CHILLED WATER COOLING DISTRIBUTION UNIT 12 CIRCUIT BOTTOM/TOP MAINS TOP DISTRIBUTION PIPING GENERAL ARRANGEMENT
PROJECT: DRAWINGS SHEET 3 OF 8

DWG NO:	ACFD12-T	REV:	0
DRAWN:	NAGESH S	17-FEB-12	FIRST ANGLE PROJECTION
ENGINEER:	M.BROWN/J.HUFFMAN	21-MAR-12	
APPROVED:	C.CUMMISKEY/C.ZALDWAR	21-MAR-12	



TOP VIEW
(SHROUD NOT SHOWN)



VIEW-B (ENLARGED)
(PVC TUBING DETAILS)

NOTES:

1. INSTALLATION SHALL COMPLY WITH NATIONAL, STATE AND LOCAL ELECTRICAL REGULATIONS.
2. PLEASE REFER TO PRODUCT MANUALS PRIOR TO INSTALLATION AND SITE PREPARATION WORK FOR FURTHER DETAILS.
3. ALL DIMENSIONS ARE IN MILLIMETERS[INCHES].

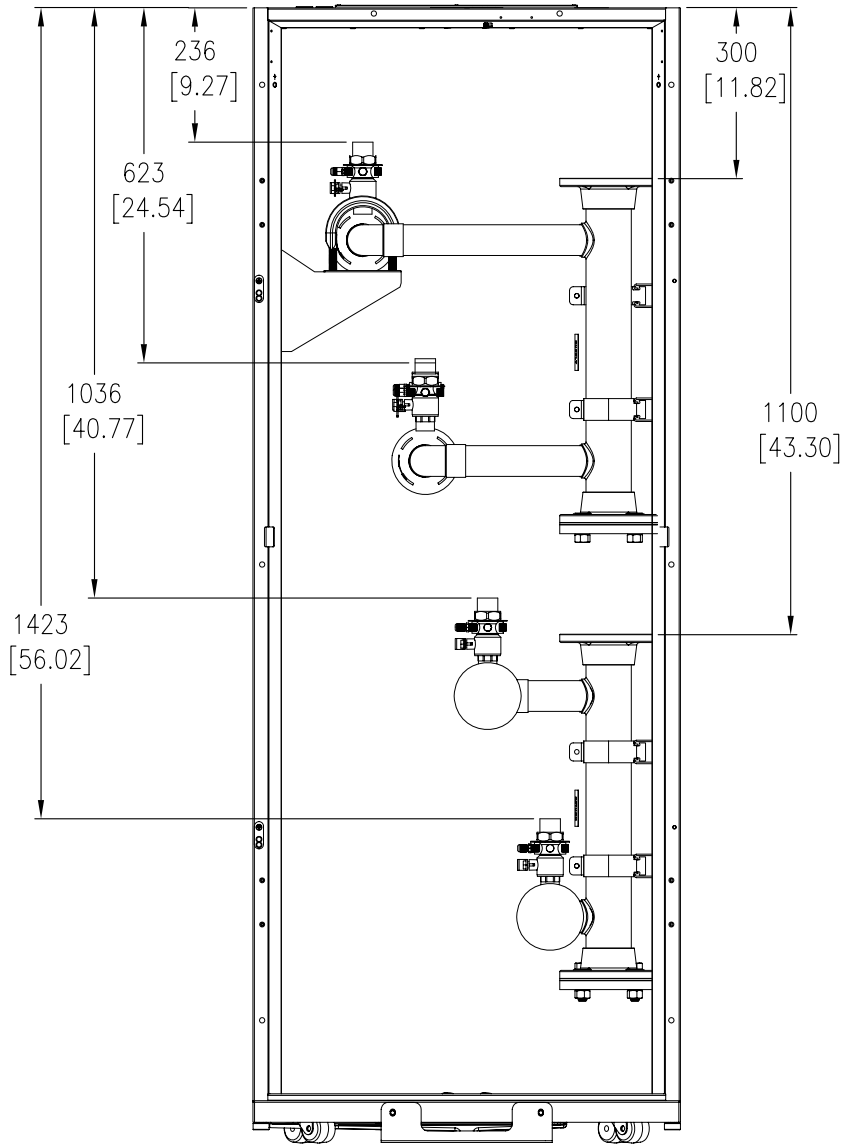
THIS DRAWING AND SPECIFICATIONS HEREIN ARE THE PROPERTY OF SCHNEIDER ELECTRIC AND SHALL NOT BE COPIED, REPRODUCED OR USED IN WHOLE OR IN PART, AS THE BASIS FOR THE MANUFACTURE OR SALE OF ITEMS WITHOUT WRITTEN PERMISSION FROM SCHNEIDER ELECTRIC. THIS DRAWING IS BASED UPON LATEST AVAILABLE INFORMATION AND IS SUBJECT TO CHANGE WITHOUT NOTICE.

Schneider Electric

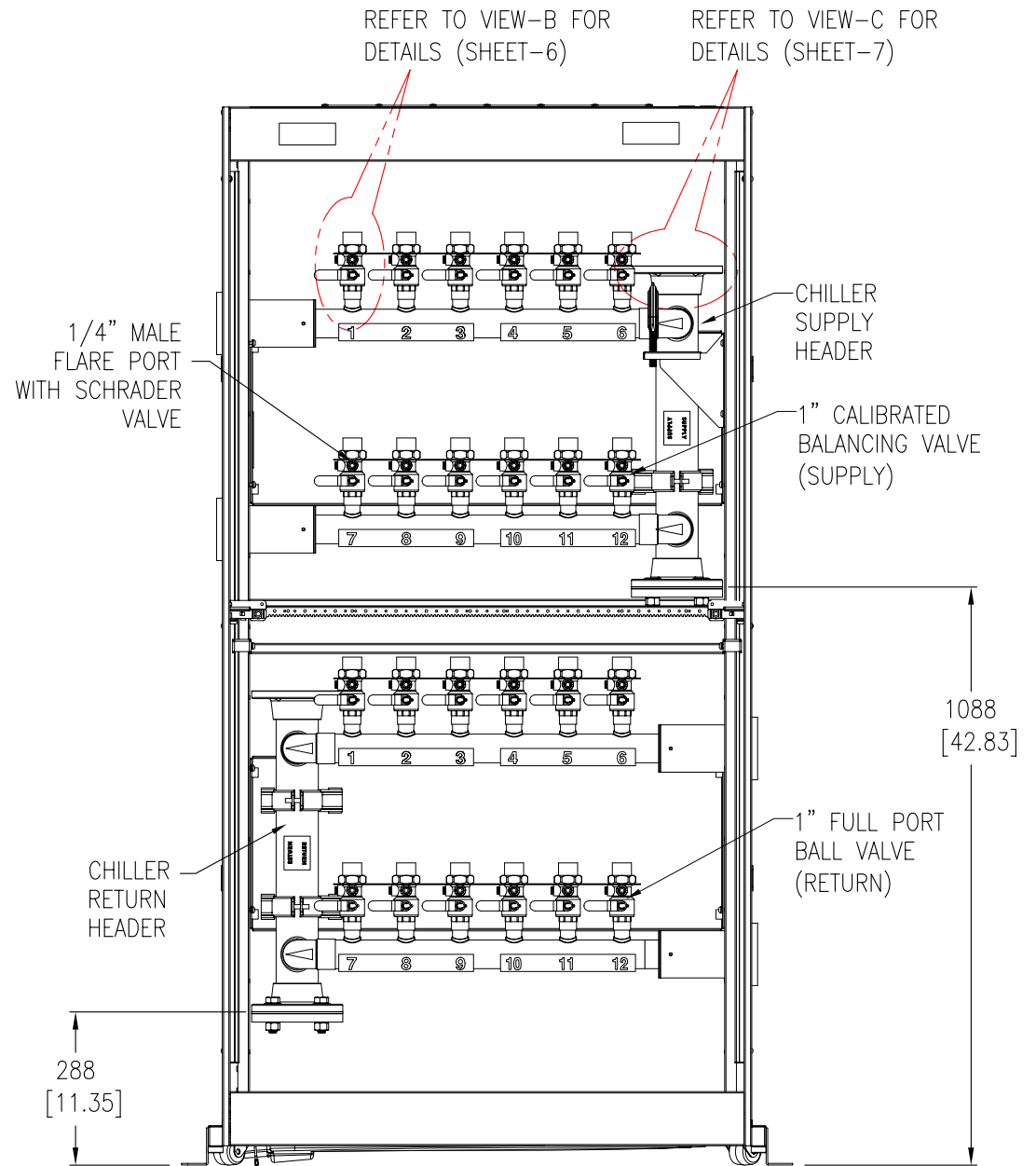
TITLE: InRow CHILLED WATER COOLING DISTRIBUTION UNIT 12 CIRCUIT BOTTOM/TOP MAINS TOP AND BOTTOM PIPING

PROJECT: DRAWINGS SHEET 4 OF 8

DWG NO:	ACFD12-T	REV:	0
DRAWN:	NAGESH S	17-FEB-12	FIRST ANGLE PROJECTION
ENGINEER:	M.BROWN/J.HUFFMAN	21-MAR-12	
APPROVED:	C.CUMMISKEY/C.ZALDWAR	21-MAR-12	



SIDE VIEW
PANELS & HEADER SUPPORT REMOVED



FRONT VIEW
SIDE PANELS AND PIPING INSULATION REMOVED

NOTES:

1. INSTALLATION SHALL COMPLY WITH NATIONAL, STATE AND LOCAL ELECTRICAL REGULATIONS.
2. PLEASE REFER TO PRODUCT MANUALS PRIOR TO INSTALLATION AND SITE PREPARATION WORK FOR FURTHER DETAILS.
3. ALL DIMENSIONS ARE IN MILLIMETERS [INCHES] UNLESS OTHERWISE SPECIFIED.
4. SOME STRUCTURAL DETAILS HAVE BEEN OMITTED FOR CLARITY.

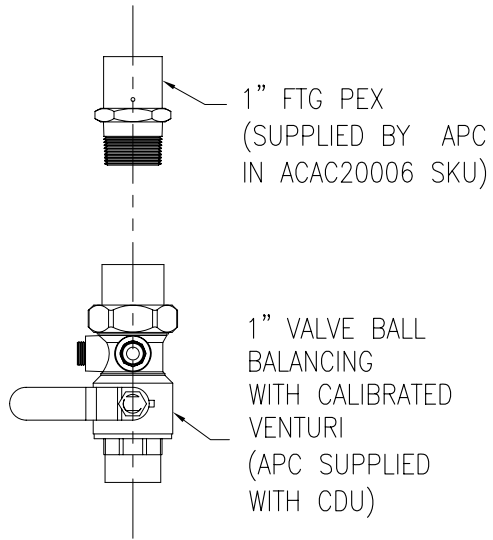
THIS DRAWING AND SPECIFICATIONS HEREIN ARE THE PROPERTY OF SCHNEIDER ELECTRIC AND SHALL NOT BE COPIED, REPRODUCED OR USED IN WHOLE OR IN PART, AS THE BASIS FOR THE MANUFACTURE OR SALE OF ITEMS WITHOUT WRITTEN PERMISSION FROM SCHNEIDER ELECTRIC. THIS DRAWING IS BASED UPON LATEST AVAILABLE INFORMATION AND IS SUBJECT TO CHANGE WITHOUT NOTICE.



TITLE: InRow CHILLED WATER COOLING DISTRIBUTION UNIT 12 CIRCUIT BOTTOM/TOP MAINS TOP DISTRIBUTION PIPING INTERNAL VIEWS FRONT SIDE
PROJECT: DRAWINGS SHEET 5 OF 8

DWG NO:	ACFD12-T	REV:	0
DRAWN:	NAGESH S	17-FEB-12	FIRST ANGLE PROJECTION
ENGINEER:	M.BROWN/J.HUFFMAN	21-MAR-12	
APPROVED:	C.CUMMISKEY/C.ZALDWAR	21-MAR-12	

DETAILS

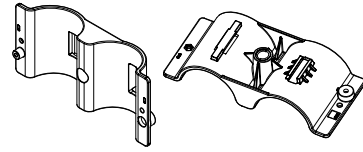


1" FTG PEX
(SUPPLIED BY APC
IN ACAC20006 SKU)

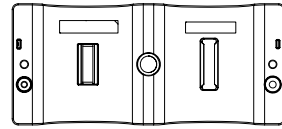
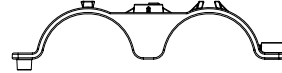
1" VALVE BALL
BALANCING
WITH CALIBRATED
VENTURI
(APC SUPPLIED
WITH CDU)

VIEW-B (ENLARGED VIEW)

ACCESSORIES

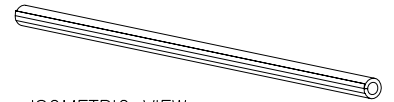


ISOMETRIC VIEW



PEX PIPE CLAMP/HANGER (POLYCARBONATE)
(ENLARGED VIEW)

SKU NUMBER: ACAC20008 (Qty of 50)
ACAC20010 (Qty of 10)

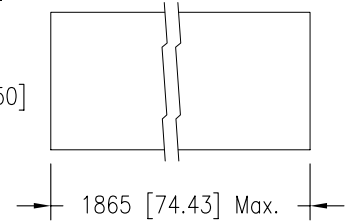
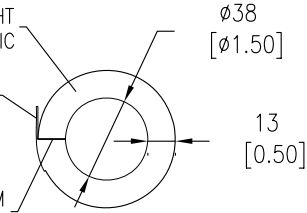


ISOMETRIC VIEW

FLEXIBLE, CLOSED-CELL LIGHT
WEIGHT EPDM BASED ELASTOMERIC

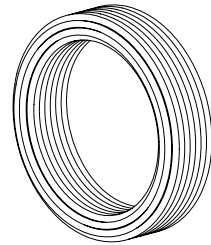
EPDM SEALING FLAP WITH
CELLULAR FUSION ADHESIVE
ON EXPOSED UNDERSIDE

ACRYLIC ADHESIVE SEAM
SEAL ONE SIDE ONLY

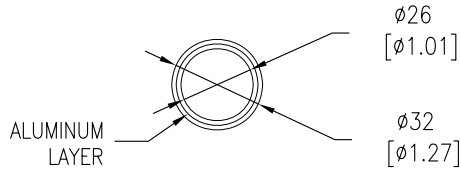


INSULATION (ENLARGED VIEW)

SKU NUMBER: ACAC20005 30.4 m[100Ft]



ISOMETRIC VIEW



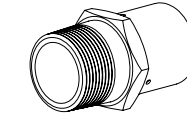
PEX-AL-PEX 1" NOMINAL DIAMETER (ENLARGED VIEW)

SKU NUMBER: ACAC20002 91.4 m[300Ft] or
ACAC20003 30.4 m[100Ft]

NOTE: TO BE PURCHASED FROM APC ONLY.

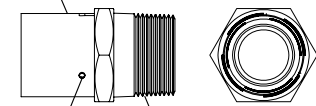
NOTES:

1. INSTALLATION SHALL COMPLY WITH NATIONAL, STATE AND LOCAL ELECTRICAL REGULATIONS.
2. PLEASE REFER TO PRODUCT MANUALS PRIOR TO INSTALLATION AND SITE PREPARATION WORK FOR FURTHER DETAILS.
3. ALL DIMENSIONS ARE IN MILLIMETERS [INCHES].



ISOMETRIC VIEW

STAINLESS STEEL
CRIMP COLLAR



DEPTH INDICATOR
HOLES, 3 PLACES

1" NPT (BRASS)

FTG PEX 1"NPT (ENLARGED VIEW)

SKU NUMBER: ACAC20006 (4 per pack)

NOTE: 1. TO BE PURCHASED FROM APC ONLY.
2. SPECIAL CRIMPING TOOL IS REQUIRED.

THIS DRAWING AND SPECIFICATIONS HEREIN ARE THE PROPERTY OF SCHNEIDER ELECTRIC AND SHALL NOT BE COPIED, REPRODUCED OR USED IN WHOLE OR IN PART, AS THE BASIS FOR THE MANUFACTURE OR SALE OF ITEMS WITHOUT WRITTEN PERMISSION FROM SCHNEIDER ELECTRIC. THIS DRAWING IS BASED UPON LATEST AVAILABLE INFORMATION AND IS SUBJECT TO CHANGE WITHOUT NOTICE.

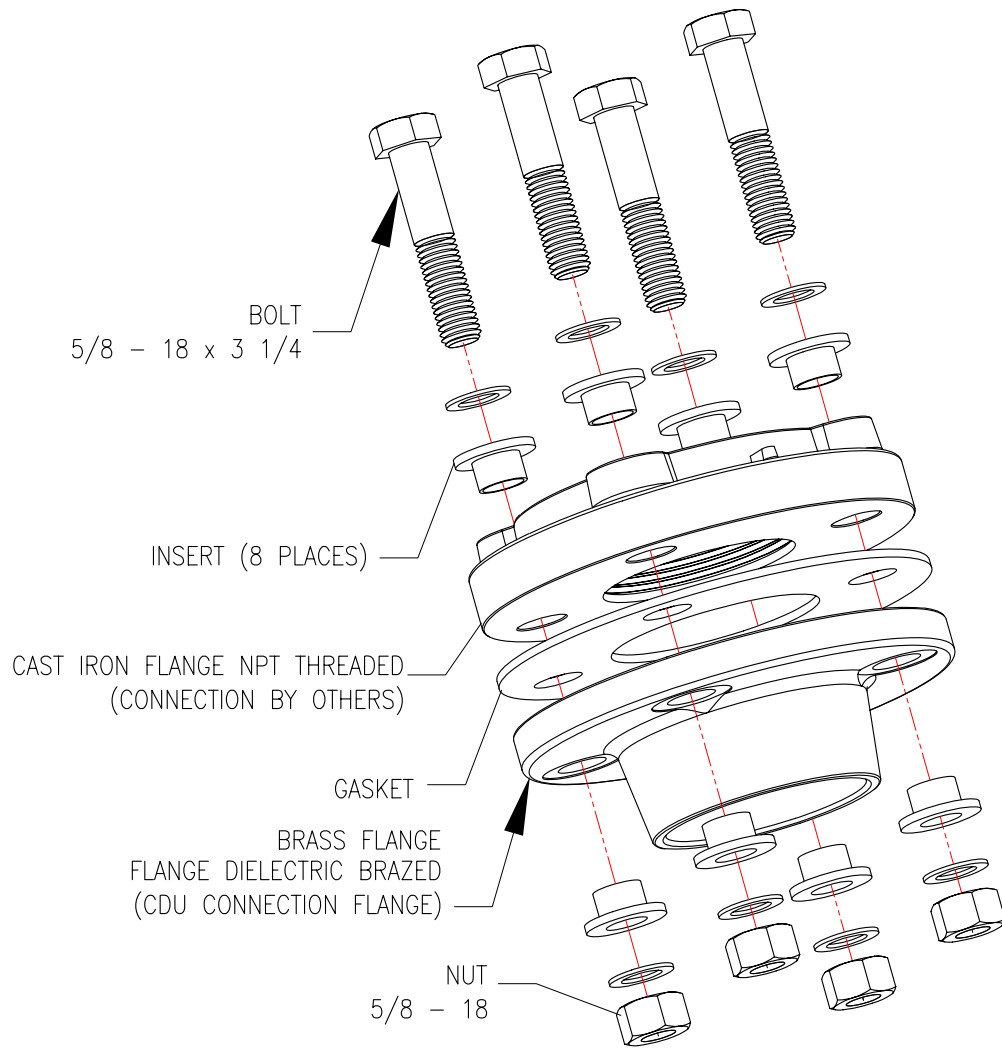


TITLE: InRow CHILLED WATER
COOLING DISTRIBUTION UNIT 12 CIRCUIT
BOTTOM/TOP MAINS
TOP DISTRIBUTION PIPING
DETAILS ACCESSORIES
PROJECT: DRAWINGS SHEET 6 OF 8

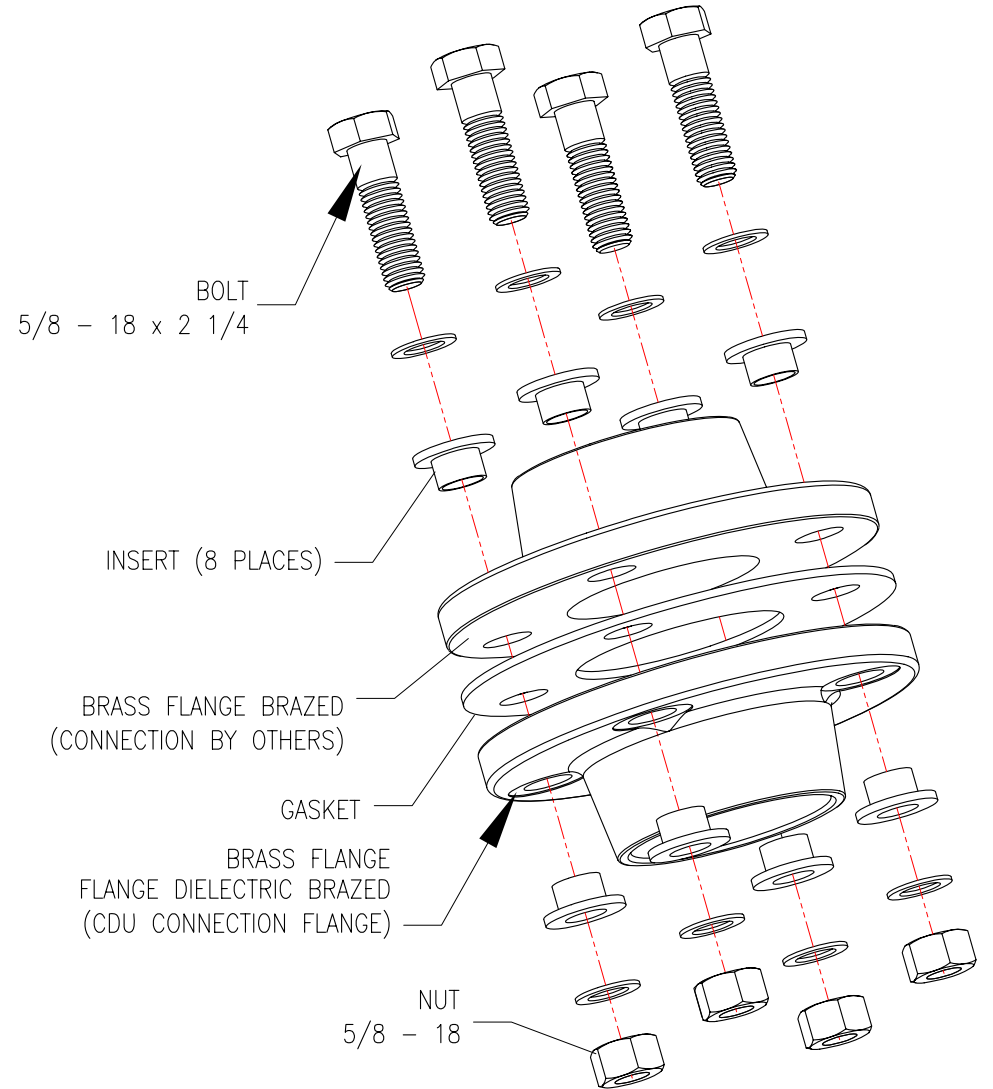
DWG NO:	ACFD12-T	REV:	0
DRAWN:	NAGESH S	17-FEB-12	FIRST
ENGINEER:	M.BROWN/J.HUFFMAN	21-MAR-12	ANGLE
APPROVED:	C.CUMMISKEY/C.ZALDWAR	21-MAR-12	PROJECTION

VIEW-C DETAILS (Exploded View)
 (USE THE APPROPRIATE FLANGE FOR YOUR WATER SYSTEM PIPING MATERIAL)

CDU WITH BRASS TO CAST IRON



CDU WITH BRASS TO BRASS



NOTES:

1. INSTALLATION SHALL COMPLY WITH NATIONAL, STATE AND LOCAL ELECTRICAL REGULATIONS.
2. PLEASE REFER TO PRODUCT MANUALS PRIOR TO INSTALLATION AND SITE PREPARATION WORK FOR FURTHER DETAILS.

THIS DRAWING AND SPECIFICATIONS HEREIN ARE THE PROPERTY OF SCHNEIDER ELECTRIC AND SHALL NOT BE COPIED, REPRODUCED OR USED IN WHOLE OR IN PART, AS THE BASIS FOR THE MANUFACTURE OR SALE OF ITEMS WITHOUT WRITTEN PERMISSION FROM SCHNEIDER ELECTRIC. THIS DRAWING IS BASED UPON LATEST AVAILABLE INFORMATION AND IS SUBJECT TO CHANGE WITHOUT NOTICE.

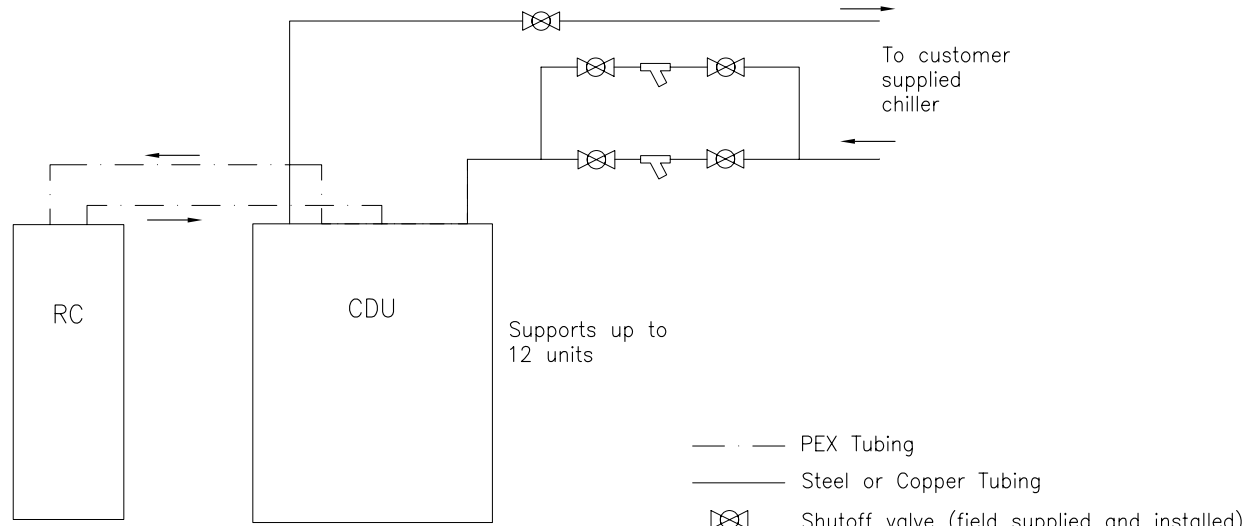
Schneider Electric

TITLE: InRow CHILLED WATER
COOLING DISTRIBUTION UNIT 12 CIRCUIT
BOTTOM/TOP MAINS
TOP DISTRIBUTION PIPING
SUPPLY RETURN CONNECTIONS
PROJECT: DRAWINGS SHEET 7 OF 8

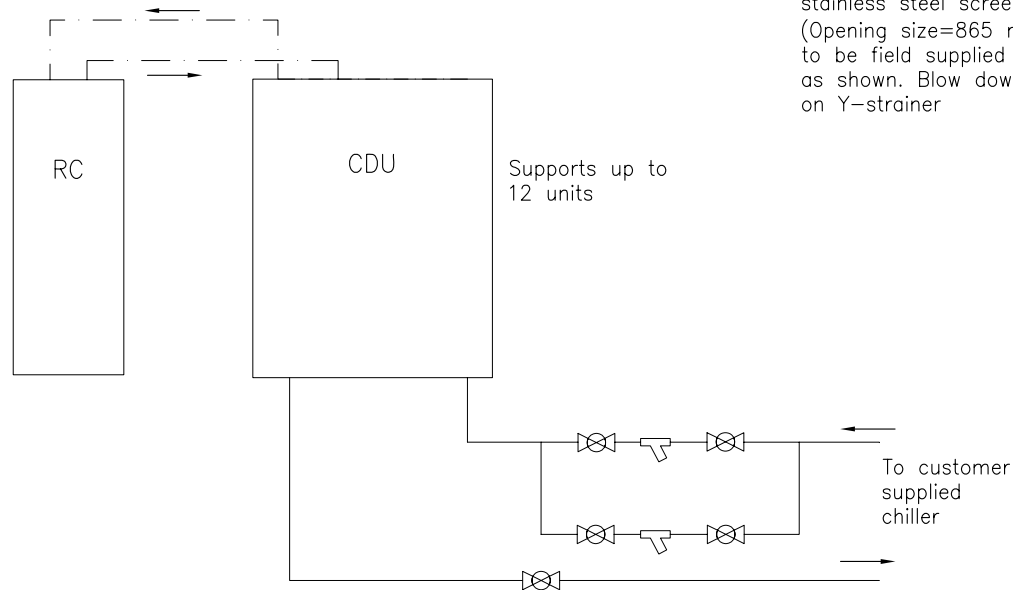
DWG NO:	ACFD12-T	REV:	0
DRAWN:	NAGESH S	17-FEB-12	FIRST ANGLE PROJECTION
ENGINEER:	M.BROWN/J.HUFFMAN	21-MAR-12	
APPROVED:	C.CUMMISKEY/C.ZALDWAR	21-MAR-12	

TOP PIPING CONFIGURATION

5 CHILLED WATER LINE FROM TOP OF THE UNIT



5 CHILLED WATER LINE FROM BOTTOM OF THE UNIT



NOTES:

1. INSTALLATION SHALL COMPLY WITH NATIONAL, STATE AND LOCAL ELECTRICAL REGULATIONS.
2. PLEASE REFER TO PRODUCT MANUALS PRIOR TO INSTALLATION AND SITE PREPARATION WORK FOR FURTHER DETAILS.
3. A REDUNDANT STRAINER IN THE BYPASS LINE IS RECOMMENDED FOR SYSTEM WITH POSSIBLE DEBRIS OR HEAVY PARTICULATES DURING SYSTEM START-UP AND NORMAL OPERATIONS.
4. FOR ADDITIONAL INFORMATION REFER TO CHILLER SUPPLEMENTAL MANUAL 990-2949
- △5. MAIN PIPES CAN BE CONFIGURED EITHER FROM THE TOP OR THE BOTTOM OF THE UNIT.

THIS DRAWING AND SPECIFICATIONS HEREIN ARE THE PROPERTY OF SCHNEIDER ELECTRIC AND SHALL NOT BE COPIED, REPRODUCED OR USED IN WHOLE OR IN PART, AS THE BASIS FOR THE MANUFACTURE OR SALE OF ITEMS WITHOUT WRITTEN PERMISSION FROM SCHNEIDER ELECTRIC. THIS DRAWING IS BASED UPON LATEST AVAILABLE INFORMATION AND IS SUBJECT TO CHANGE WITHOUT NOTICE.

Schneider Electric

TITLE: InRow CHILLED WATER COOLING DISTRIBUTION UNIT 12 CIRCUIT BOTTOM/TOP MAINS TOP DISTRIBUTION PIPING PIPING DIAGRAM

DWG NO:	ACFD12-T	REV:	0
DRAWN:	NAGESH S	17-FEB-12	FIRST ANGLE PROJECTION
ENGINEER:	M.BROWN/J.HUFFMAN	21-MAR-12	
APPROVED:	C.CUMMISKEY/C.ZALDWAR	21-MAR-12	

PROJECT: DRAWINGS SHEET 8 OF 8