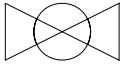
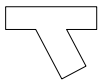


COOLING DISTRIBUTION UNIT 12 CIRCUIT, BOTTOM/TOP MAINS, BOTTOM DISTRIBUTION PIPING

Drawing Package

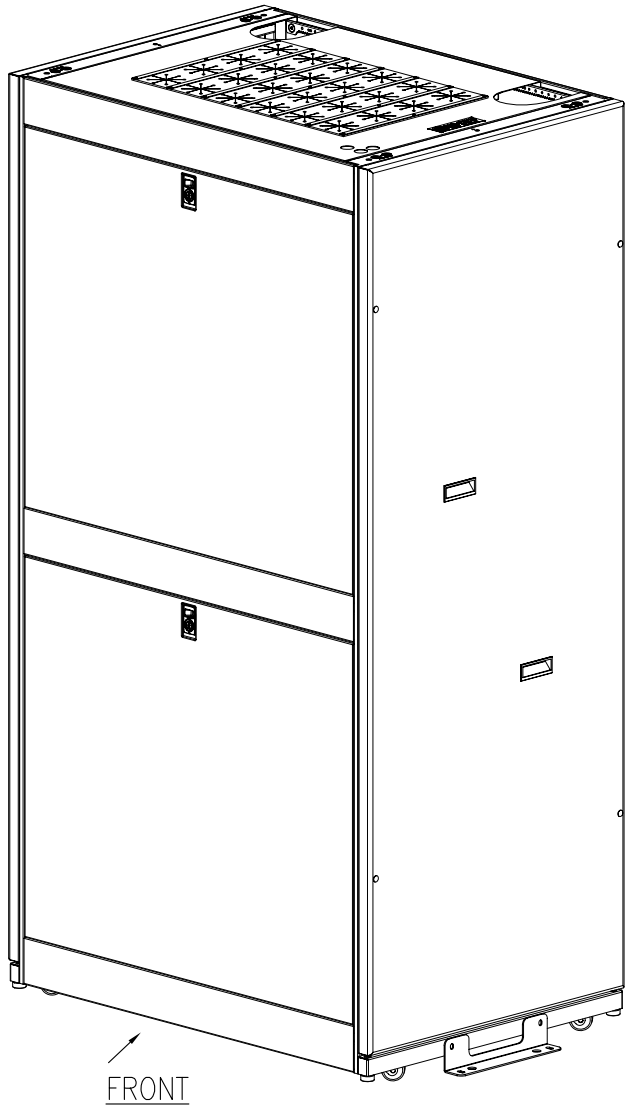
Sheet No.	Component /Detail	Description
1	Draw ing Guide	Cooling Distribution Unit 12 Circuit, Bottom/Top Mains, Bottom Distribution Pping Draw ing Guide
2	Dimetric View	Cooling Distribution Unit 12 Circuit, Bottom/Top Mains, Bottom Distribution Pping Dimetric View
3	General Arrangement	Cooling Distribution Unit 12 Circuit, Bottom/Top Mains, Bottom Distribution Pping General Arrangement
4	Top and Bottom View s	Cooling Distribution Unit 12 Circuit, Bottom/Top Mains, Bottom Distribution Pping Top and Bottom View s
5	Internal View s Front side	Cooling Distribution Unit 12 Circuit, Bottom/Top Mains, Bottom Distribution Pping Internal View s Front side
6	Details Accessories	Cooling Distribution Unit 12 Circuit, Bottom/Top Mains, Bottom Distribution Pping Details Accessories
7	Supply Return Connections	Cooling Distribution Unit 12 Circuit, Bottom/Top Mains, Bottom Distribution Pping Supply Return Connections
8	Piping Diagram	Cooling Distribution Unit 12 Circuit, Bottom/Top Mains, Bottom Distribution Pping Piping Diagram

LEGEND	
SYMBOL	DESCRIPTION
	SHUT OFF VALVE
	Y-STRAINER

THIS DRAWING AND SPECIFICATIONS HEREIN ARE THE PROPERTY OF SCHNEIDER ELECTRIC AND SHALL NOT BE COPIED, REPRODUCED OR USED IN WHOLE OR IN PART, AS THE BASIS FOR THE MANUFACTURE OR SALE OF ITEMS WITHOUT WRITTEN PERMISSION FROM SCHNEIDER ELECTRIC. THIS DRAWING IS BASED UPON LATEST AVAILABLE INFORMATION AND IS SUBJECT TO CHANGE WITHOUT NOTICE.

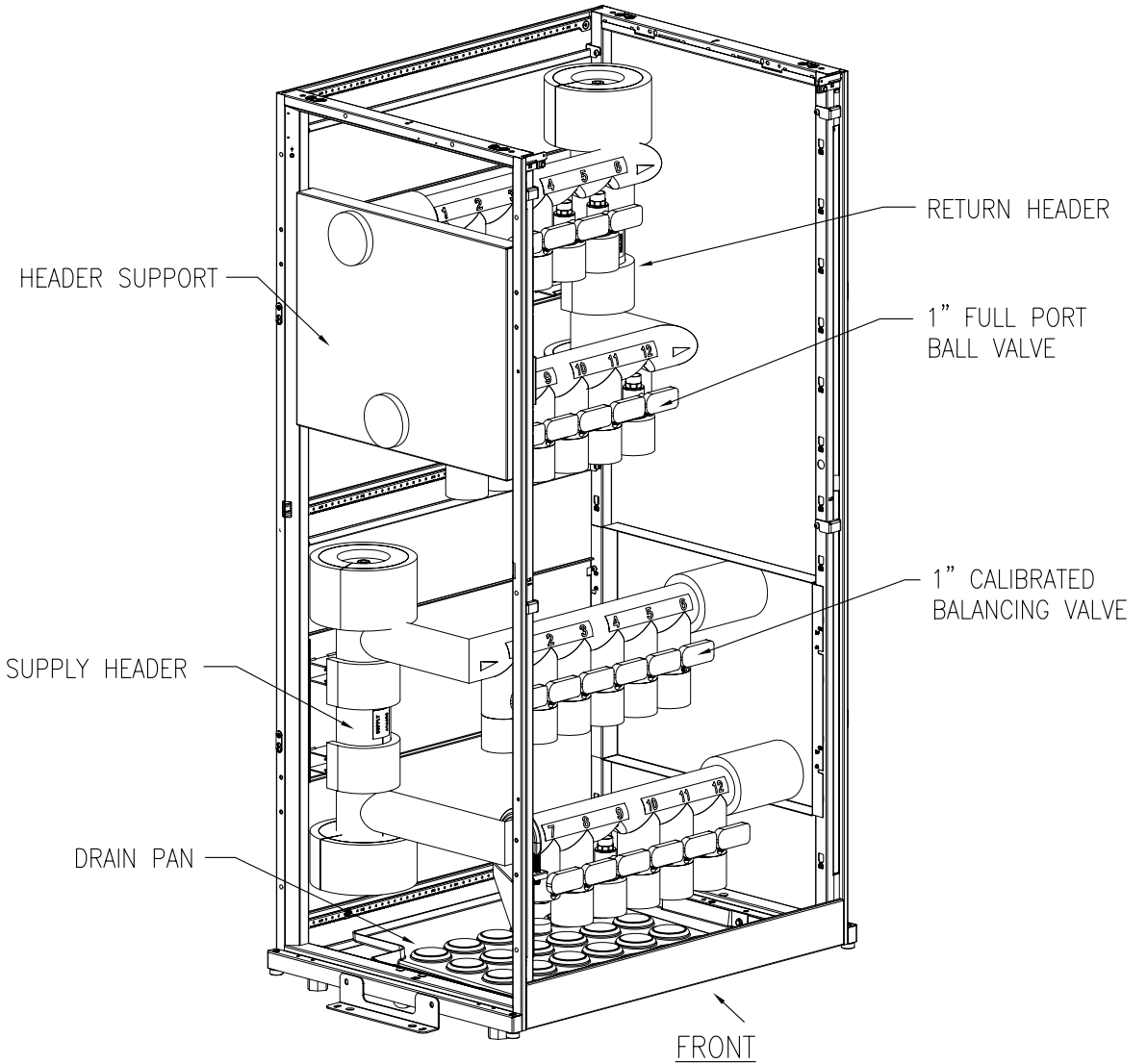


TITLE: InRow CHILLED WATER COOLING DISTRIBUTION UNIT 12 CIRCUIT BOTTOM/TOP MAINS BOTTOM DISTRIBUTION PIPING DRAWING GUIDE	DWG NO: ACFD12-B	REV: 0
DRAWN: NAGESH S ENGINEER: M.BROWN/J.HUFFMAN	16-FEB-12 21-MAR-12	ANGLE PROJ N.A
PROJECT: DRAWINGS SHEET 1 OF 8	APPROVED: C.CUMMISKEY/C.ZALDWAR 21-MAR-12	



FRONT

DIMETRIC VIEW
WITH PANELS



HEADER SUPPORT

SUPPLY HEADER

DRAIN PAN

RETURN HEADER

1" FULL PORT
BALL VALVE

1" CALIBRATED
BALANCING VALVE

FRONT

DIMETRIC VIEW
PANELS REMOVED FOR CLARITY

NOTES:

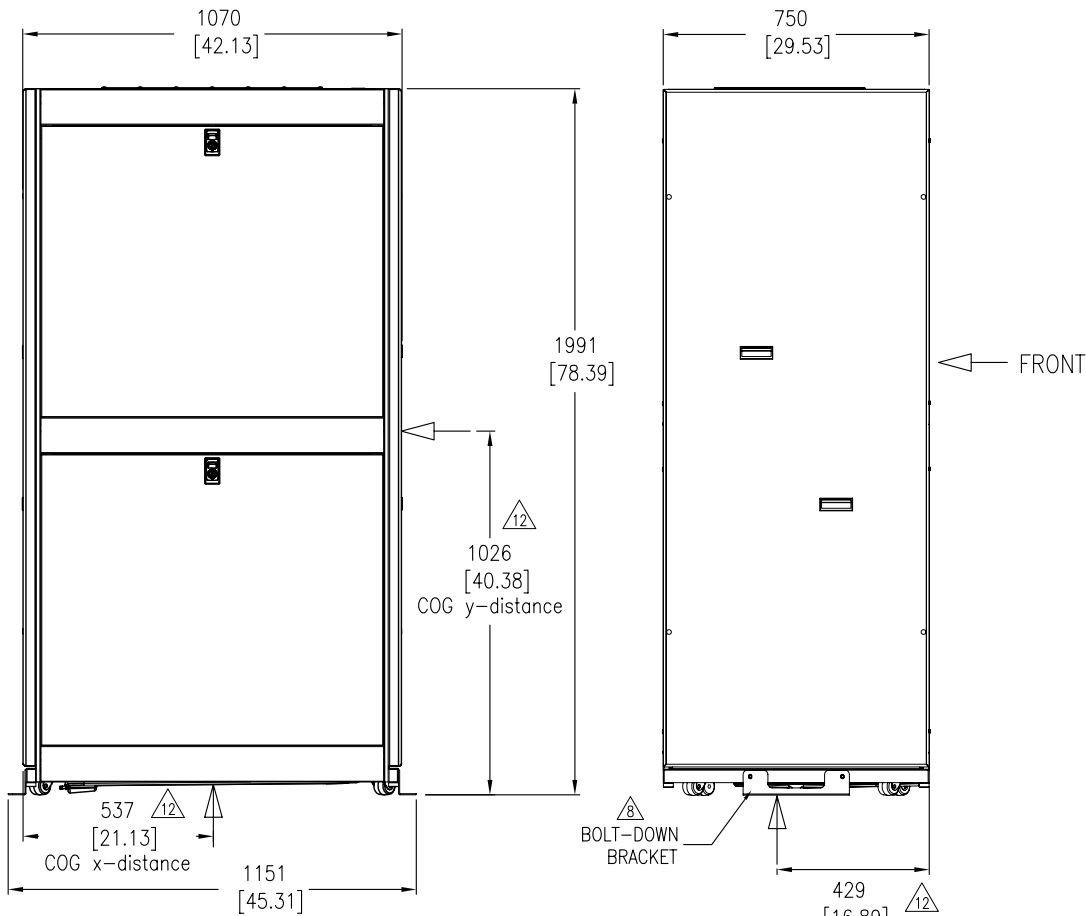
1. INSTALLATION SHALL COMPLY WITH NATIONAL, STATE AND LOCAL ELECTRICAL REGULATIONS.
2. PLEASE REFER TO PRODUCT MANUALS PRIOR TO INSTALLATION AND SITE PREPARATION WORK FOR FURTHER DETAILS.

THIS DRAWING AND SPECIFICATIONS HEREIN ARE THE PROPERTY OF SCHNEIDER ELECTRIC AND SHALL NOT BE COPIED, REPRODUCED OR USED IN WHOLE OR IN PART, AS THE BASIS FOR THE MANUFACTURE OR SALE OF ITEMS WITHOUT WRITTEN PERMISSION FROM SCHNEIDER ELECTRIC. THIS DRAWING IS BASED UPON LATEST AVAILABLE INFORMATION AND IS SUBJECT TO CHANGE WITHOUT NOTICE.



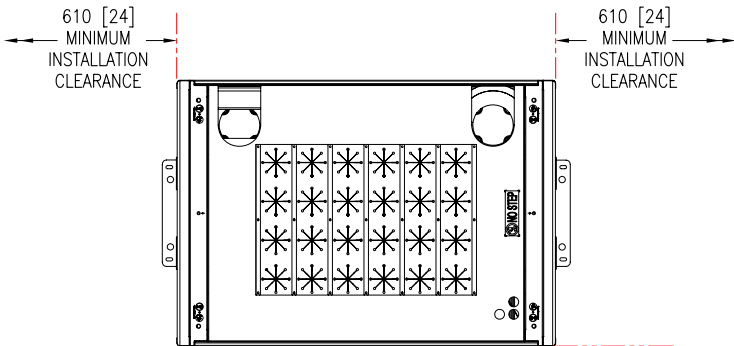
TITLE: InRow CHILLED WATER
COOLING DISTRIBUTION UNIT 12 CIRCUIT
BOTTOM/TOP MAINS
BOTTOM DISTRIBUTION PIPING
DIMETRIC VIEW (EXTERNAL)
PROJECT: DRAWINGS SHEET 2 OF 8

DWG NO:	ACFD12-B	REV:	0
DRAWN:	NAGESH S	16-FEB-12	ANGLE
ENGINEER:	M.BROWN/J.HUFFMAN	21-MAR-12	PROJ
APPROVED:	C.CUMMISKEY/C.ZALDWAR	21-MAR-12	N.A.



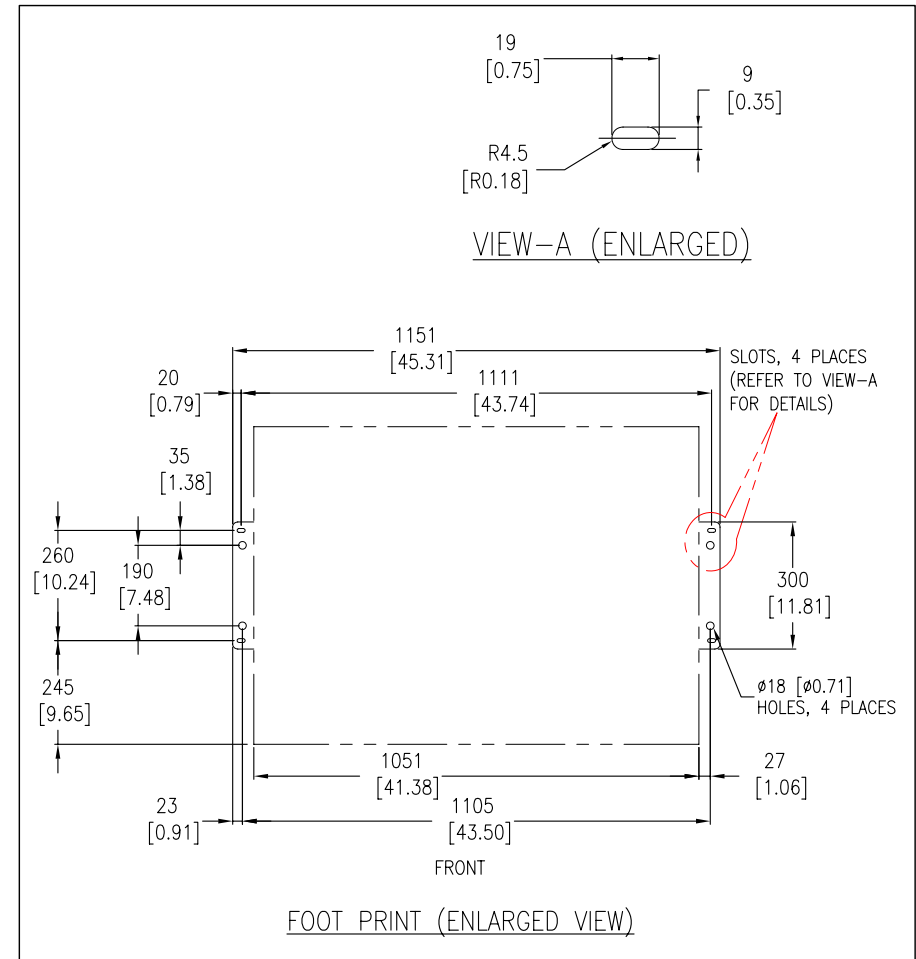
FRONT VIEW

SIDE VIEW



TOP VIEW

- NOTES:
1. INSTALLATION SHALL COMPLY WITH NATIONAL, STATE AND LOCAL ELECTRICAL REGULATIONS.
 2. PLEASE REFER TO PRODUCT MANUALS PRIOR TO INSTALLATION AND SITE PREPARATION WORK FOR FURTHER DETAILS.
 3. ALL DIMENSIONS ARE IN MILLIMETERS [INCHES].
 4. BOTTOM PIPING CONFIGURATION. BOTTOM PIPING REQUIRES RAISED FLOOR.
 5. FRONT ACCESS IS REQUIRED FOR SERVICE.
 6. NET WEIGHT OF UNIT IS 269.56 kg [593 lb] & OPERATING WEIGHT OF UNIT IS 314.55 kg [692 lb].
 7. FLOOR LOADING: 440 kg/meter² [90 lb/ft²].
 - △ 8. IF ADDITIONAL STABILITY IS REQUIRED, USE THE 870-11101A BRACKET TO ANCHOR THE UNIT TO THE FLOOR.
 9. MAIN PIPES CAN BE CONFIGURED EITHER FROM THE TOP OR THE BOTTOM OF THE UNIT.
 10. RAISED FLOOR SUPPORTING STRUCTURE MAY NEED TO BE RE-CONFIGURED TO ENSURE NO PIPING INTERFERENCE ACCESS OR BLOCKING A PATHWAY.
 11. A MINIMUM OF 305mm [12"] BOTTOM CLEARANCE IS REQUIRED FOR INSTALLATION.
 - △ 12. THIS INFORMATION PROVIDED CONSERVATIVE CENTER OF GRAVITY.



VIEW-A (ENLARGED)

FOOT PRINT (ENLARGED VIEW)

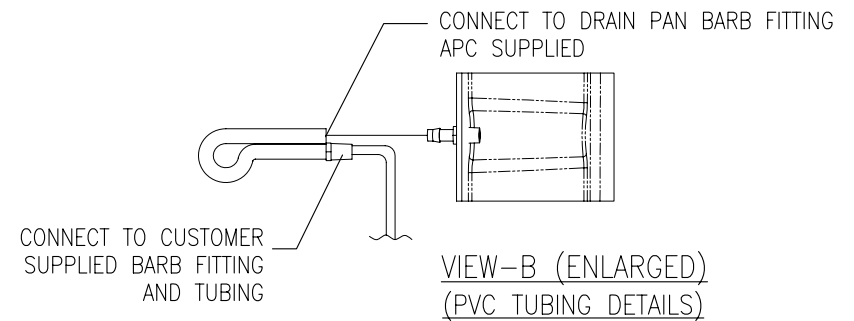
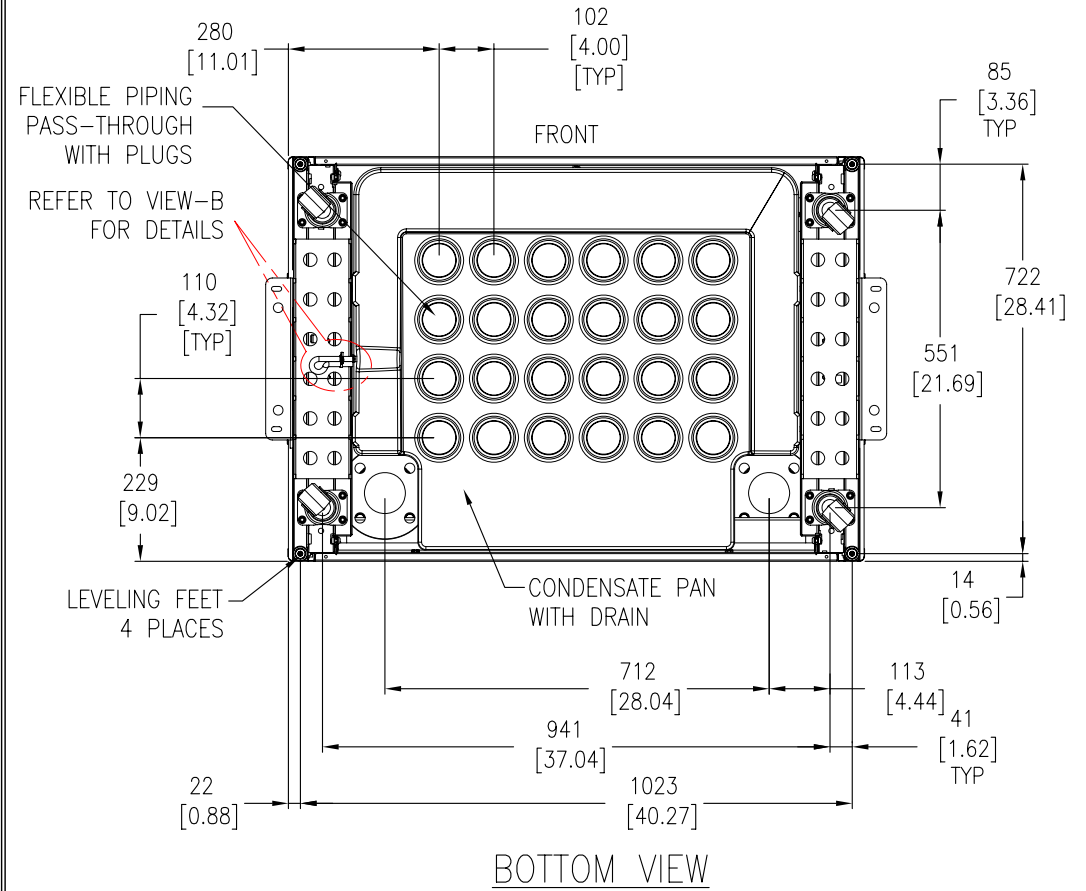
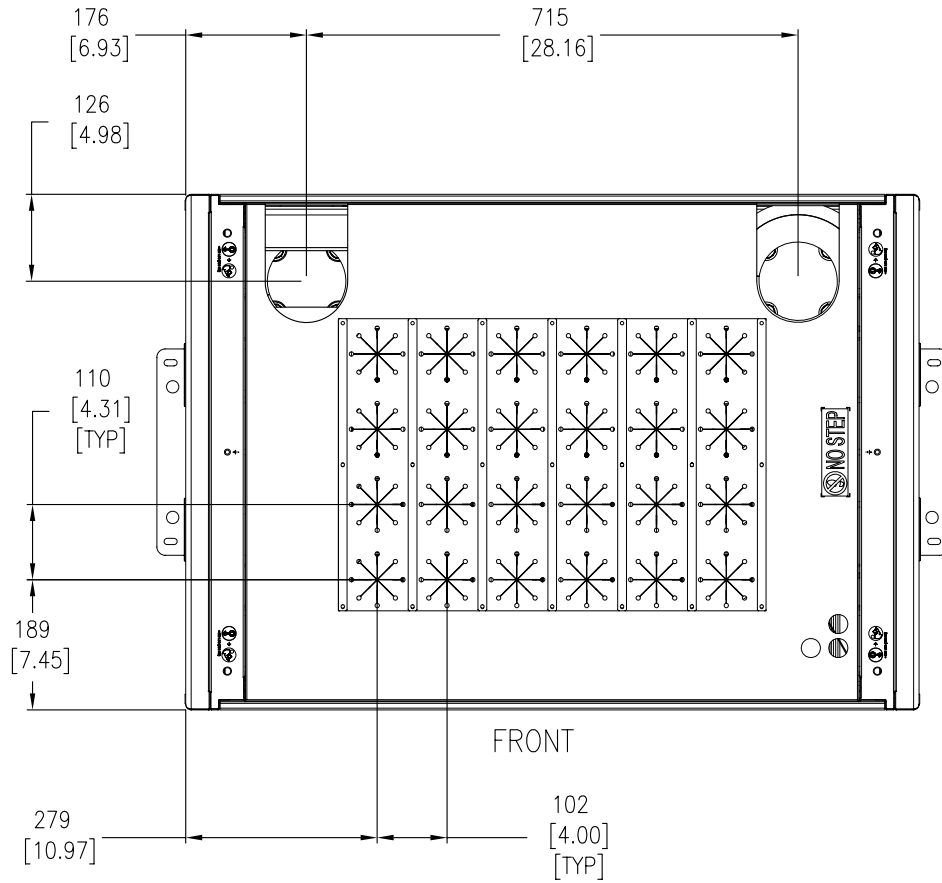
THIS DRAWING AND SPECIFICATIONS HEREIN ARE THE PROPERTY OF SCHNEIDER ELECTRIC AND SHALL NOT BE COPIED, REPRODUCED OR USED IN WHOLE OR IN PART, AS THE BASIS FOR THE MANUFACTURE OR SALE OF ITEMS WITHOUT WRITTEN PERMISSION FROM SCHNEIDER ELECTRIC. THIS DRAWING IS BASED UPON LATEST AVAILABLE INFORMATION AND IS SUBJECT TO CHANGE WITHOUT NOTICE.



TITLE: InRow CHILLED WATER COOLING DISTRIBUTION UNIT 12 CIRCUIT BOTTOM/TOP MAINS BOTTOM DISTRIBUTION PIPING GENERAL ARRANGEMENT
PROJECT: DRAWINGS SHEET 3 OF 8

DWG NO: ACFD12-B
DRAWN: NAGESH S 16-FEB-12
ENGINEER: M.BROWN/J.HUFFMAN 21-MAR-12
APPROVED: C.CUMMISKEY/C.ZALDWAR 21-MAR-12

REV: 0
FIRST ANGLE PROJECTION



NOTES:

1. INSTALLATION SHALL COMPLY WITH NATIONAL, STATE AND LOCAL ELECTRICAL REGULATIONS.
2. PLEASE REFER TO PRODUCT MANUALS PRIOR TO INSTALLATION AND SITE PREPARATION WORK FOR FURTHER DETAILS.
3. ALL DIMENSIONS ARE IN MILLIMETERS[INCHES].

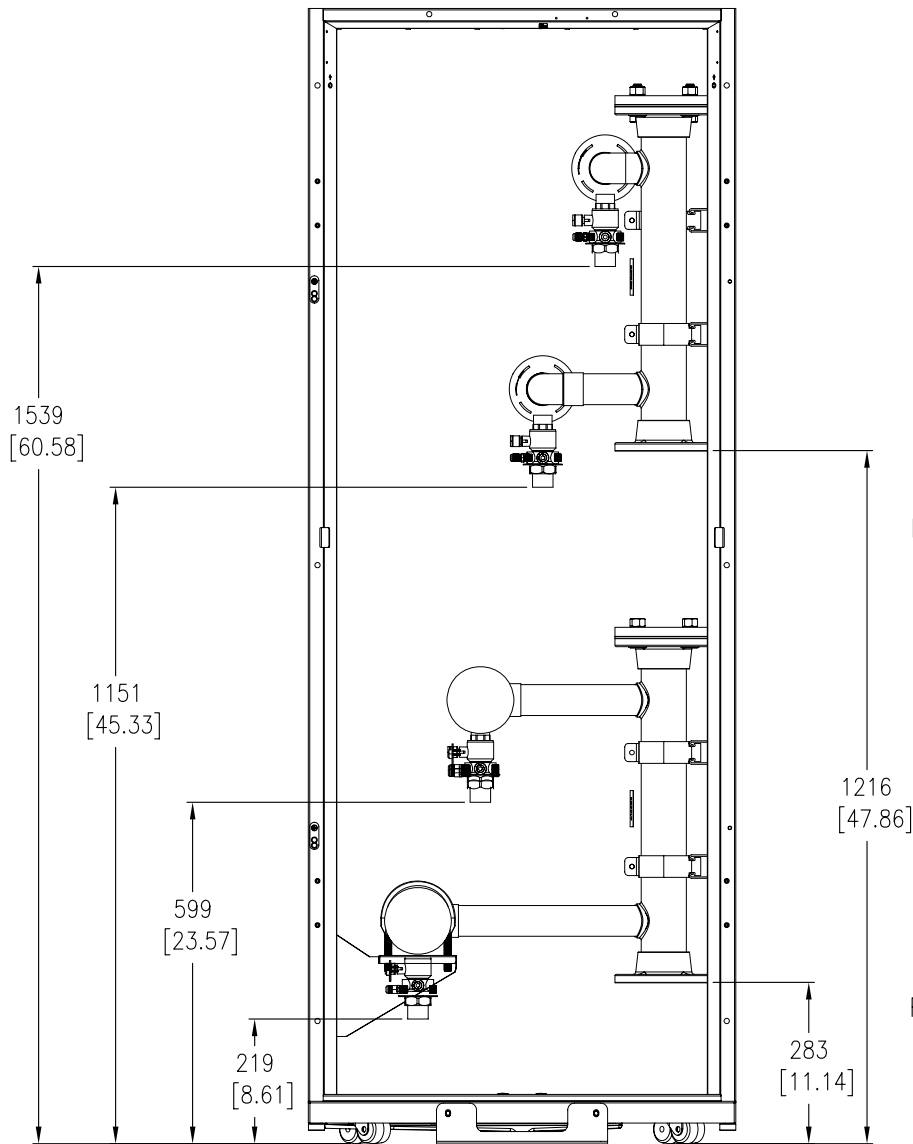
THIS DRAWING AND SPECIFICATIONS HEREIN ARE THE PROPERTY OF SCHNEIDER ELECTRIC AND SHALL NOT BE COPIED, REPRODUCED OR USED IN WHOLE OR IN PART, AS THE BASIS FOR THE MANUFACTURE OR SALE OF ITEMS WITHOUT WRITTEN PERMISSION FROM SCHNEIDER ELECTRIC. THIS DRAWING IS BASED UPON LATEST AVAILABLE INFORMATION AND IS SUBJECT TO CHANGE WITHOUT NOTICE.



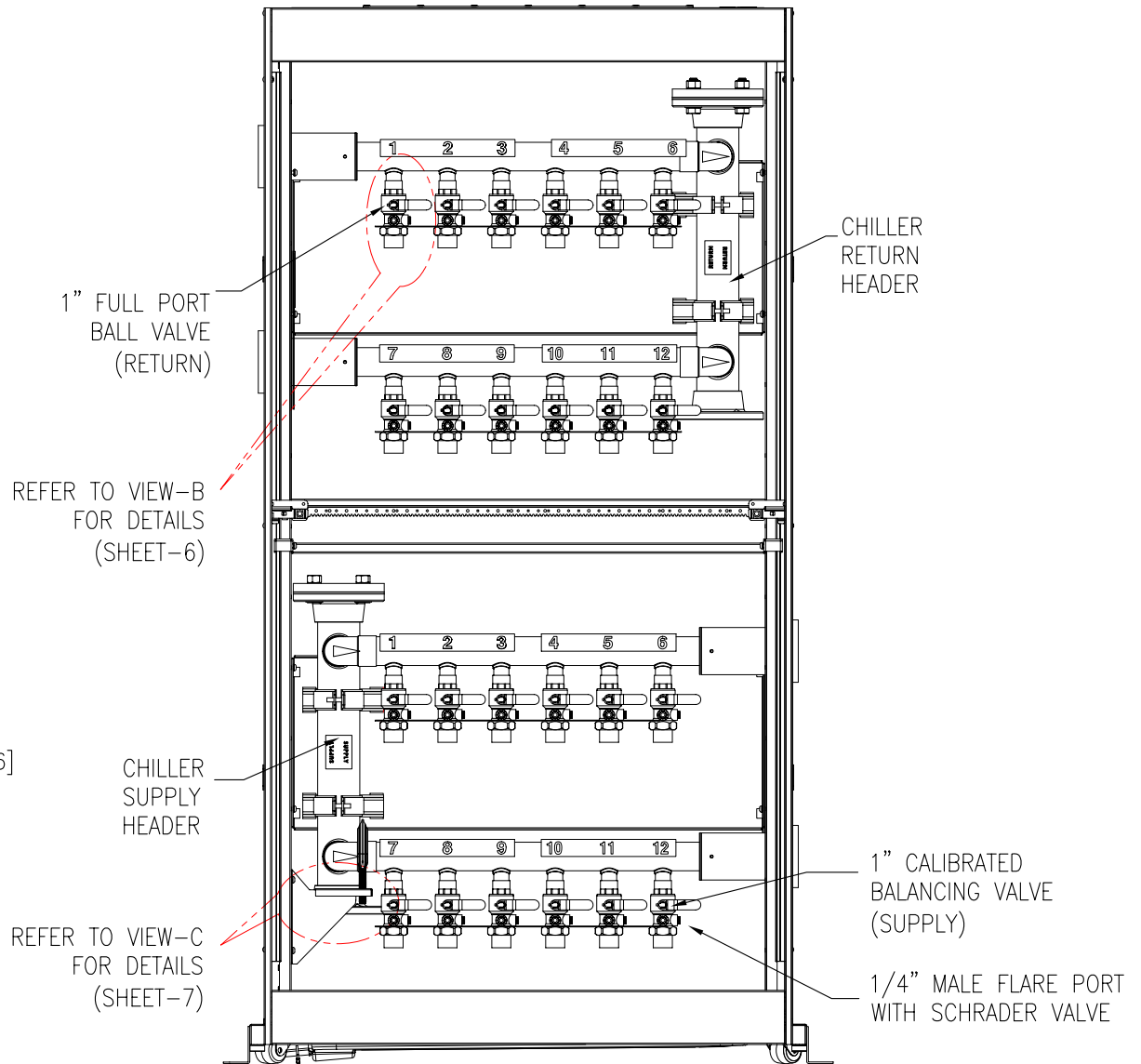
TITLE: InRow CHILLED WATER COOLING DISTRIBUTION UNIT 12 CIRCUIT BOTTOM/TOP MAINS BOTTOM DISTRIBUTION PIPING TOP AND BOTTOM VIEWS

PROJECT: DRAWINGS SHEET 4 OF 8

DWG NO:	ACFD12-B	REV:	0
DRAWN:	NAGESH S	16-FEB-12	FIRST ANGLE PROJECTION
ENGINEER:	M.BROWN/J.HUFFMAN	21-MAR-12	
APPROVED:	C.CUMMISKEY/C.ZALDWAR	21-MAR-12	



SIDE VIEW
PANELS & HEADER SUPPORT REMOVED



FRONT VIEW
SIDE PANELS AND PIPING INSULATION REMOVED

NOTES:

1. INSTALLATION SHALL COMPLY WITH NATIONAL, STATE AND LOCAL ELECTRICAL REGULATIONS.
2. PLEASE REFER TO PRODUCT MANUALS PRIOR TO INSTALLATION AND SITE PREPARATION WORK FOR FURTHER DETAILS.
3. ALL DIMENSIONS ARE IN MILLIMETERS [INCHES] UNLESS OTHERWISE SPECIFIED.
4. SOME STRUCTURAL DETAILS HAVE BEEN OMITTED FOR CLARITY.

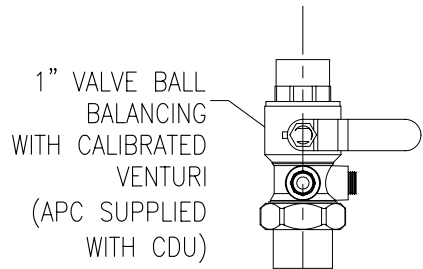
THIS DRAWING AND SPECIFICATIONS HEREIN ARE THE PROPERTY OF SCHNEIDER ELECTRIC AND SHALL NOT BE COPIED, REPRODUCED OR USED IN WHOLE OR IN PART, AS THE BASIS FOR THE MANUFACTURE OR SALE OF ITEMS WITHOUT WRITTEN PERMISSION FROM SCHNEIDER ELECTRIC. THIS DRAWING IS BASED UPON LATEST AVAILABLE INFORMATION AND IS SUBJECT TO CHANGE WITHOUT NOTICE.



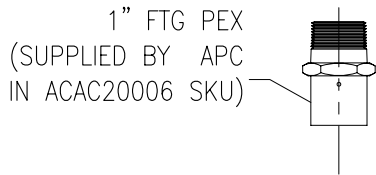
TITLE: InRow CHILLED WATER COOLING DISTRIBUTION UNIT 12 CIRCUIT BOTTOM/TOP MAINS BOTTOM DISTRIBUTION PIPING INTERNAL FRONT & SIDE VIEWS
PROJECT: DRAWINGS SHEET 5 OF 8

DWG NO:	ACFD12-B	REV:	0
DRAWN:	NAGESH S	16-FEB-12	FIRST
ENGINEER:	M.BROWN/J.HUFFMAN	21-MAR-12	ANGLE
APPROVED:	C.CUMMISKEY/C.ZALDWAR	21-MAR-12	PROJECTION

DETAILS



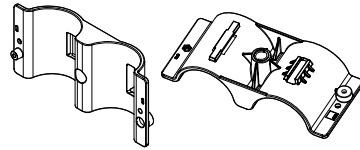
1" VALVE BALL
BALANCING
WITH CALIBRATED
VENTURI
(APC SUPPLIED
WITH CDU)



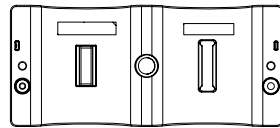
1" FTG PEX
(SUPPLIED BY APC
IN ACAC20006 SKU)

VIEW-B (ENLARGED VIEW)

ACCESSORIES

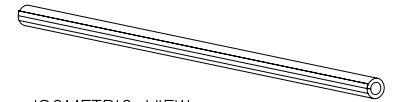


ISOMETRIC VIEW



PEX PIPE CLAMP/HANGER (POLYCARBONATE)
(ENLARGED VIEW)

SKU NUMBER: ACAC20008 (Qty of 50)
ACAC20010 (Qty of 10)

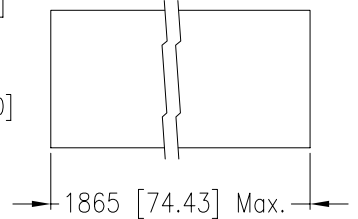
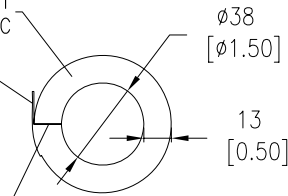


ISOMETRIC VIEW

FLEXIBLE, CLOSED-CELL LIGHT
WEIGHT EPDM BASED ELASTOMERIC

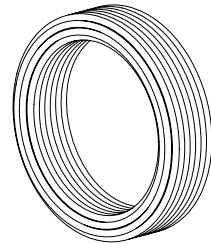
EPDM SEALING FLAP WITH
CELLULAR FUSION ADHESIVE
ON EXPOSED UNDERSIDE

ACRYLIC ADHESIVE SEAM
SEAL ONE SIDE ONLY

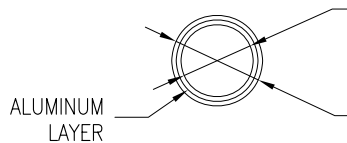


INSULATION (ENLARGED VIEW)

SKU NUMBER: ACAC20005 30.4 m[100Ft]



ISOMETRIC VIEW



26
[1.01]

32
[1.27]

ALUMINUM
LAYER

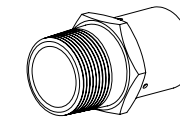
PEX-AL-PEX 1" NOMINAL DIAMETER (ENLARGED VIEW)

SKU NUMBER: ACAC20002 91.4 m[300 Ft] or
ACAC20003 30.4 m[100 Ft]

NOTE: TO BE PURCHASED FROM APC ONLY.

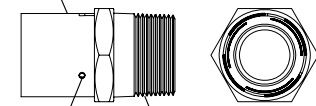
NOTES:

1. INSTALLATION SHALL COMPLY WITH NATIONAL, STATE AND LOCAL ELECTRICAL REGULATIONS.
2. PLEASE REFER TO PRODUCT MANUALS PRIOR TO INSTALLATION AND SITE PREPARATION WORK FOR FURTHER DETAILS.
3. ALL DIMENSIONS ARE IN MILLIMETERS [INCHES].



ISOMETRIC VIEW

STAINLESS STEEL
CRIMP COLLAR



DEPTH INDICATOR
HOLES, 3 PLACES

1" NPT (BRASS)

FTG PEX 1"NPT (ENLARGED VIEW)

SKU NUMBER: ACAC20006 (4 per pack)

NOTE: 1. TO BE PURCHASED FROM APC ONLY.
2. SPECIAL CRIMPING TOOL IS REQUIRED.

THIS DRAWING AND SPECIFICATIONS HEREIN ARE THE PROPERTY OF SCHNEIDER ELECTRIC AND SHALL NOT BE COPIED, REPRODUCED OR USED IN WHOLE OR IN PART, AS THE BASIS FOR THE MANUFACTURE OR SALE OF ITEMS WITHOUT WRITTEN PERMISSION FROM SCHNEIDER ELECTRIC. THIS DRAWING IS BASED UPON LATEST AVAILABLE INFORMATION AND IS SUBJECT TO CHANGE WITHOUT NOTICE.

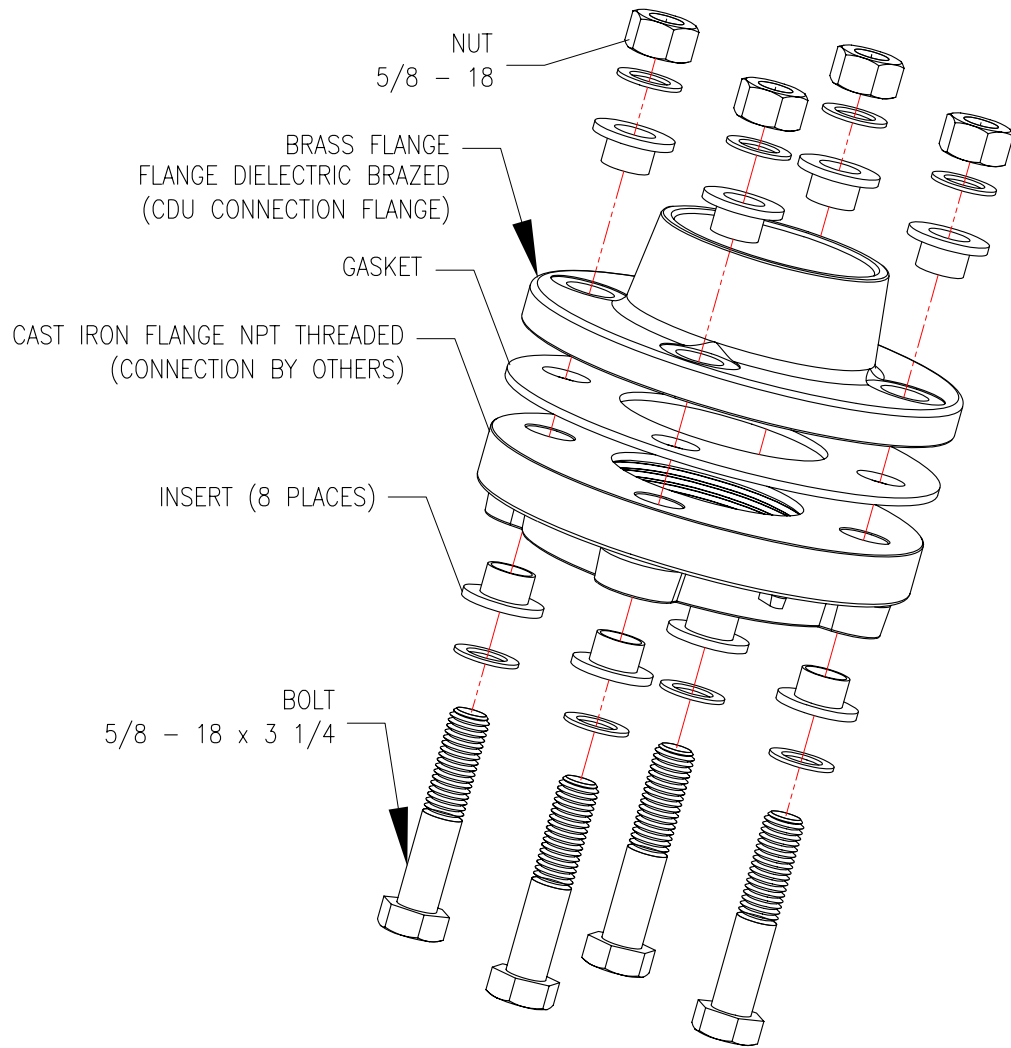


TITLE: InRow CHILLED WATER
COOLING DISTRIBUTION UNIT 12 CIRCUIT
BOTTOM/TOP MAINS
BOTTOM DISTRIBUTION PIPING
DETAILS & ACCESSORIES
PROJECT: DRAWINGS SHEET 6 OF 8

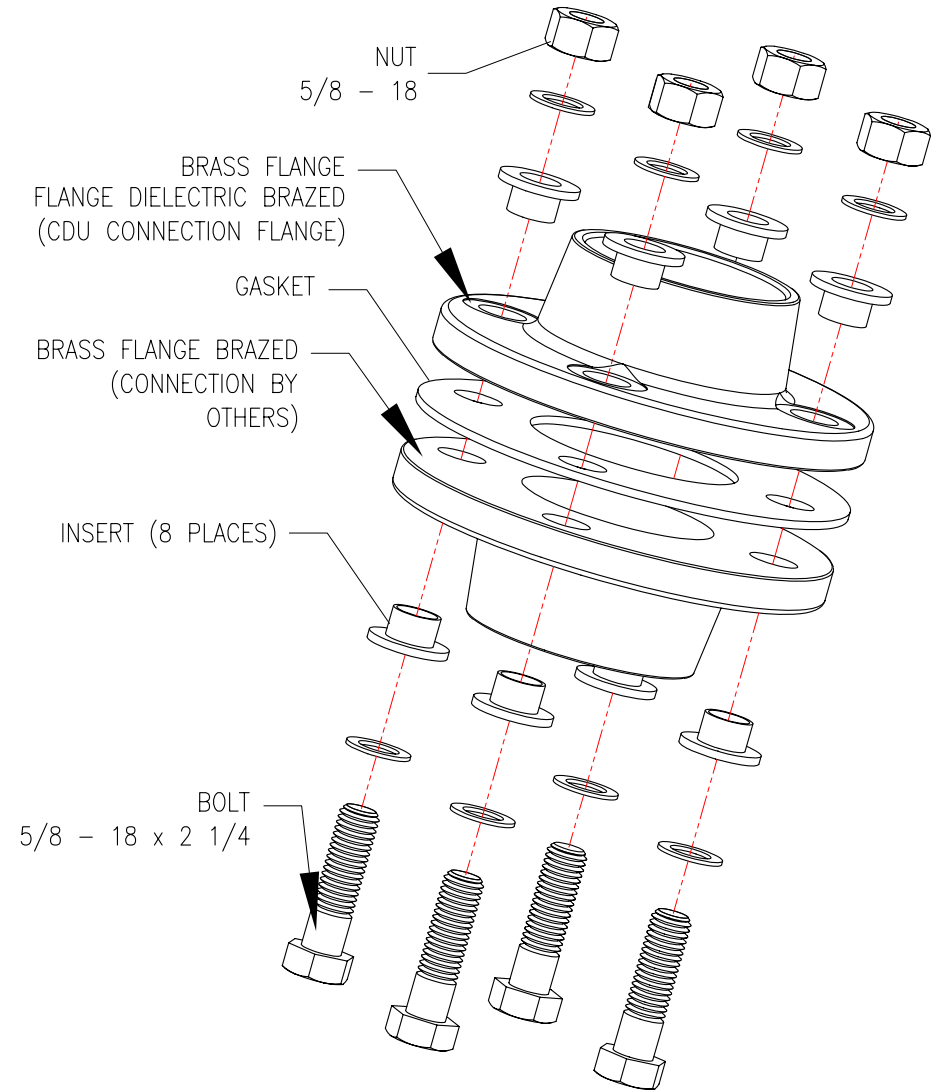
DWG NO:	ACFD12-B	REV:	0
DRAWN:	NAGESH S	16-FEB-12	FIRST
ENGINEER:	M.BROWN/J.HUFFMAN	21-MAR-12	ANGLE
APPROVED:	C.CUMMISKEY/C.ZALDWAR	21-MAR-12	PROJECTION

VIEW-C DETAILS (Exploded View)
 (USE THE APPROPRIATE FLANGE FOR YOUR WATER SYSTEM PIPING MATERIAL)

CDU WITH BRASS TO CAST IRON



CDU WITH BRASS TO BRASS



NOTES:

1. INSTALLATION SHALL COMPLY WITH NATIONAL, STATE AND LOCAL ELECTRICAL REGULATIONS.
2. PLEASE REFER TO PRODUCT MANUALS PRIOR TO INSTALLATION AND SITE PREPARATION WORK FOR FURTHER DETAILS.

THIS DRAWING AND SPECIFICATIONS HEREIN ARE THE PROPERTY OF SCHNEIDER ELECTRIC AND SHALL NOT BE COPIED, REPRODUCED OR USED IN WHOLE OR IN PART, AS THE BASIS FOR THE MANUFACTURE OR SALE OF ITEMS WITHOUT WRITTEN PERMISSION FROM SCHNEIDER ELECTRIC. THIS DRAWING IS BASED UPON LATEST AVAILABLE INFORMATION AND IS SUBJECT TO CHANGE WITHOUT NOTICE.

Schneider Electric

TITLE: InRow CHILLED WATER
 COOLING DISTRIBUTION UNIT 12 CIRCUIT
 BOTTOM/TOP MAINS
 BOTTOM DISTRIBUTION PIPING
 SUPPLY & RETURN CONNECTIONS
 PROJECT: DRAWINGS SHEET 7 OF 8

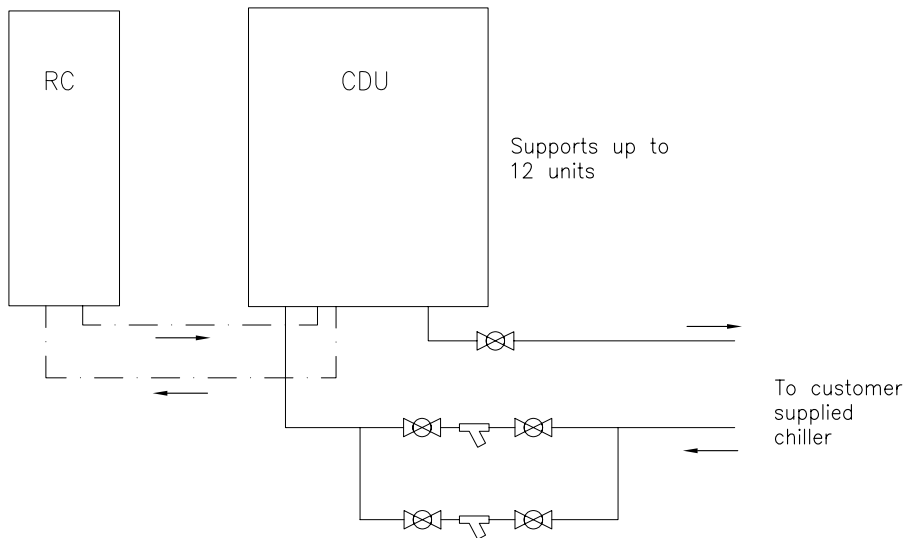
DWG NO: ACFD12-B
 DRAWN: NAGESH S 16-FEB-12
 ENGINEER: M.BROWN/J.HUFFMAN 21-MAR-12
 APPROVED: C.CUMMISKEY/C.ZALDWAR 21-MAR-12

REV: 0
 FIRST ANGLE PROJECTION

BOTTOM PIPING CONFIGURATION

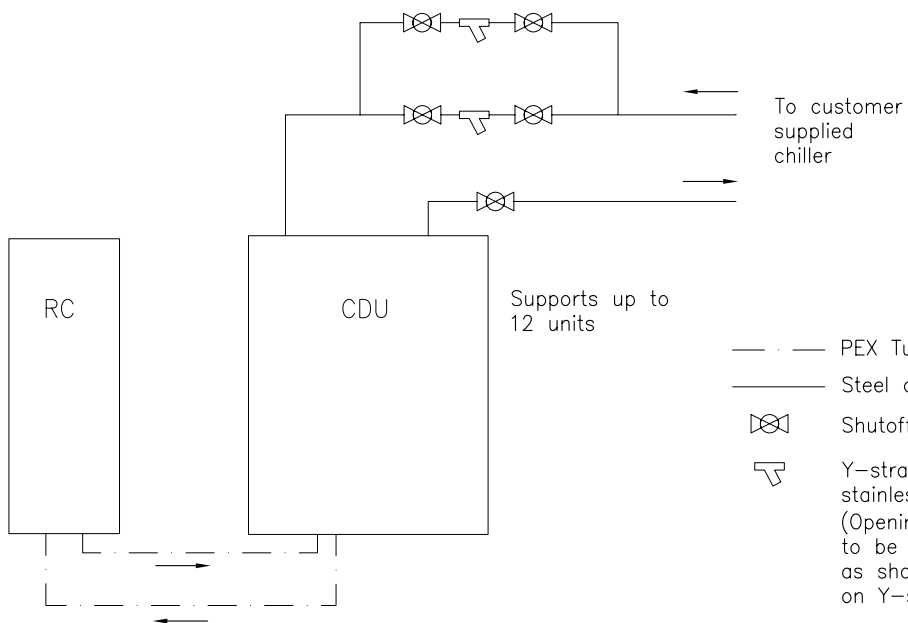
5

CHILLED WATER LINE FROM
BOTTOM OF THE UNIT



5

CHILLED WATER LINE FROM
TOP OF THE UNIT



- PEX Tubing
- Steel or Copper Tubing
- ⊗ Shutoff valve (field supplied and installed)
- Y Y-strainer with 20 mesh stainless steel screen (Opening size=865 micron) are to be field supplied and installed as shown. Blow down may be installed on Y-strainer

NOTES:

1. INSTALLATION SHALL COMPLY WITH NATIONAL, STATE AND LOCAL ELECTRICAL REGULATIONS.
2. PLEASE REFER TO PRODUCT MANUALS PRIOR TO INSTALLATION AND SITE PREPARATION WORK FOR FURTHER DETAILS.
3. A REDUNDANT STRAINER IN THE BYPASS LINE IS RECOMMENDED FOR SYSTEM WITH POSSIBLE DEBRIS OR HEAVY PARTICULATES DURING SYSTEM START-UP AND NORMAL OPERATIONS.
4. FOR ADDITIONAL INFORMATION REFER TO CHILLER SUPPLEMENTAL MANUAL 990-2949
- Δ5. MAIN PIPES CAN BE CONFIGURED EITHER FROM THE TOP OR THE BOTTOM OF THE UNIT.

THIS DRAWING AND SPECIFICATIONS HEREIN ARE THE PROPERTY OF SCHNEIDER ELECTRIC AND SHALL NOT BE COPIED, REPRODUCED OR USED IN WHOLE OR IN PART, AS THE BASIS FOR THE MANUFACTURE OR SALE OF ITEMS WITHOUT WRITTEN PERMISSION FROM SCHNEIDER ELECTRIC. THIS DRAWING IS BASED UPON LATEST AVAILABLE INFORMATION AND IS SUBJECT TO CHANGE WITHOUT NOTICE.



TITLE: InRow CHILLED WATER COOLING DISTRIBUTION UNIT 12 CIRCUIT BOTTOM/TOP MAINS BOTTOM DISTRIBUTION PIPING PIPING DIAGRAM

DWG NO: ACFD12-B

REV: 0

DRAWN: NAGESH S 16-FEB-12

ANGLE

ENGINEER: M.BROWN/J.HUFFMAN 21-MAR-12

PROJ

PROJECT: DRAWINGS SHEET 8 OF 8

APPROVED: C.CUMMISKEY/C.ZALDWAR 21-MAR-12

N.A